



**HAL**  
open science

## The human remains found in 1967 in Axlor: Still not convincingly Neandertals: A reply to González-Urquijo et al

Asier Gómez-Olivencia, Diego López-Onaindia, Nohemi Sala, Antoine Balzeau, Ana Pantoja-Pérez, Ignacio Arganda-Carreras, Mikel Arlegi, Joseba Rios-Garaizar, Aida Gómez-Robles

### ► To cite this version:

Asier Gómez-Olivencia, Diego López-Onaindia, Nohemi Sala, Antoine Balzeau, Ana Pantoja-Pérez, et al.. The human remains found in 1967 in Axlor: Still not convincingly Neandertals: A reply to González-Urquijo et al. *American Journal of Biological Anthropology*, 2023, 180 (2), pp.245-251. 10.1002/ajpa.24633 . hal-03985684

**HAL Id: hal-03985684**

<https://hal.science/hal-03985684v1>

Submitted on 19 Oct 2023

**HAL** is a multi-disciplinary open access archive for the deposit and dissemination of scientific research documents, whether they are published or not. The documents may come from teaching and research institutions in France or abroad, or from public or private research centers.

L'archive ouverte pluridisciplinaire **HAL**, est destinée au dépôt et à la diffusion de documents scientifiques de niveau recherche, publiés ou non, émanant des établissements d'enseignement et de recherche français ou étrangers, des laboratoires publics ou privés.



Distributed under a Creative Commons Attribution 4.0 International License



**The human remains found in 1967 in Axlor: still not convincingly Neandertals. A reply to González-Urquijo et al.**

Journal:	<i>American Journal of Biological Anthropology</i>
Manuscript ID	AJPA-2022-00017.R1
Wiley - Manuscript type:	Letter to the Editor
Date Submitted by the Author:	n/a
Complete List of Authors:	Gómez-Olivencia, Asier; Sociedad de Ciencias Aranzadi, Departamento de Prehistoria; Universidad del País Vasco Facultad de Ciencia y Tecnología, López-Onaindia, Diego; Autonomous University of Barcelona (UAB), Biología Animal, Biología Vegetal i d'Ecologia Sala, Nohemi; Centro UCM-ISCI III de Investigación sobre la Evolución y Comportamiento Humanos Balzeau, A; Museum Natl Hist Nat, Dept Prehist, CNRS UMR 7194 du CNRS, Paris, France , Dept. of Prehistory Pantoja-Pérez, Ana; Centro UCM-ISCI III de Investigación sobre la Evolución y Comportamiento Humanos Arganda-Carreras, Ignacio; Dept. Ciencias de la Computacion e Inteligencia Artificial. Facultad de Informatica, Universidad del País Vasco-Euskal Herriko Unibertsitatea (UPV/EHU) Manuel Lardizabal Ibilbidea 1, 20018 Donostia, Gipuzkoa, Spain. Arlegi, Mikel; Universidad del País Vasco, Estadigrafía y Paleontología Rios-Garaizar, Joseba; CENIEH Gómez-Robles, Aida; Konrad Lorenz Institute for Evolution and Cognition Research
Key Words:	<i>Homo sapiens</i> , Neandertal, geometric morphometrics
Subfield: Please select 2 subfields. Select the main subject first.:	Paleontology , Human biology [living humans; behavior, ecology, physiology, anatomy]

SCHOLARONE™  
Manuscripts

1  
2 Letter to the Editor  
3  
4  
5

6 The human remains found in 1967 in Axlor: still not convincingly Neandertals. A reply to  
7  
8  
9 González-Urquijo et al.  
10

11  
12  
13 Asier Gómez-Olivencia<sup>a,b,c\*</sup>  
14

15  
16 Diego López-Onaindia<sup>d</sup>  
17

18 Nohemi Sala<sup>e,c</sup>  
19

20 Antoine Balzeau<sup>f,g</sup>  
21

22 Ana Pantoja-Pérez<sup>e,c</sup>  
23

24 Ignacio Arganda-Carreras<sup>h,i,j</sup>  
25

26  
27 Mikel Arlegi<sup>k,l</sup>  
28

29 Joseba Rios-Garaizar<sup>m</sup>  
30

31 Aida Gómez-Robles<sup>n,o,p</sup>  
32  
33  
34  
35

36 <sup>a</sup>Dept. Geología, Facultad de Ciencia y Tecnología, Universidad del País Vasco/Euskal Herriko  
37 Unibertsitatea (UPV/EHU). Barrio Sarriena s/n, 48940 Bilbao, Spain.  
38

39 <sup>b</sup>Sociedad de Ciencias Aranzadi, Zorroagaina 11, 20014 Donostia-San Sebastian, Spain.  
40

41 <sup>c</sup>Centro UCM-ISCIH de Investigación sobre Evolución y Comportamiento Humanos, Avda.  
42 Monforte de Lemos 5 (Pabellón 14), 28029 Madrid, Spain.  
43

44 <sup>d</sup>UMR 5199, PACEA, Université de Bordeaux, Allée Geoffroy Saint-Hilaire, Bâtiment B8,  
45 CS50023 33615 Pessac Cedex, France.  
46

47 <sup>e</sup>Centro Nacional de Investigación sobre la Evolución Humana (CENIEH), Paseo de la Sierra de  
48 Atapuerca 3, 09002 Burgos, Spain.  
49  
50  
51  
52  
53  
54  
55  
56  
57  
58  
59  
60

1  
2 <sup>f</sup>Équipe de Paléontologie Humaine, UMR 7194, CNRS, Département Homme et Environnement,  
3  
4 Muséum national d'Histoire naturelle. Musée de l'Homme, 17, Place du Trocadéro, 75016 Paris,  
5  
6 France.

7  
8  
9 <sup>g</sup>Department of African Zoology, Royal Museum for Central Africa, Tervuren, Belgium.

10  
11 <sup>h</sup>Dept. Ciencias de la Computación e Inteligencia Artificial. Facultad de Informatica, Universidad  
12  
13 del País Vasco/Euskal Herriko Unibertsitatea (UPV/EHU) Manuel Lardizabal Ibilbidea 1, 20018  
14  
15 Donostia, Gipuzkoa, Spain.

16  
17  
18 <sup>i</sup>Ikerbasque, Basque Foundation for Science, Bilbao, Spain.

19  
20  
21 <sup>j</sup>Donostia International Physics Center (DIPC). Manuel Lardizabal Ibilbidea 4, 20018 Donostia,  
22  
23 Gipuzkoa, Spain.

24  
25 <sup>k</sup>Institut Català de Paleoecologia Humana i Evolució Social (IPHES-CERCA), Zona Educacional 4,  
26  
27 Campus Sescelades URV (Edifici W3), 43007 Tarragona, Spain.

28  
29  
30 <sup>l</sup>Universitat Rovira i Virgili, Departament d'Història i Història de l'Art, Avinguda de  
31  
32 Catalunya 35, 43002 Tarragona, Spain.

33  
34 <sup>m</sup>Independent researcher.

35  
36  
37 <sup>n</sup>Department of Anthropology, University College London, WC1E 0BW London, UK.

38  
39  
40 <sup>o</sup>Department of Genetics, Evolution and Environment, University College London, WC1E 6BT  
41  
42 London, UK.

43  
44  
45 <sup>p</sup>Department of Life Sciences, Natural History Museum, SW7 5BD London, UK.

#### 46 47 48 Correspondence

49  
50 Asier Gómez-Olivencia, Dept. Geología, Facultad de Ciencia y Tecnología, Universidad del País  
51  
52 Vasco/Euskal Herriko Unibertsitatea (UPV/EHU). Barrio Sarriena s/n, 48940 Bilbao, Spain.

53  
54 Email: asier.gomez@ehu.eus (A.G.-O.)

**ORCID**

*Asier Gómez-Olivencia* <https://orcid.org/0000-0001-7831-3902>

*Diego López-Onaindia* <https://orcid.org/0000-0002-5266-6416>

*Nohemi Sala* <https://orcid.org/0000-0002-0896-1493>

*Antoine Balzeau* <https://orcid.org/0000-0002-4226-611X>

*Ana Pantoja-Pérez* <https://orcid.org/0000-0001-9302-1756>

*Ignacio Arganda-Carreras* <https://orcid.org/0000-0003-0229-5722>

*Mikel Arlegi* <http://orcid.org/0000-0001-5665-9275>

*Joseba Rios-Garaizar* <https://orcid.org/0000-0001-8474-2156>

*Aida Gómez-Robles* <https://orcid.org/0000-0002-8719-2660>

1  
2 In 2020, we published a study that described all the human remains found during J. M. de  
3 Barandiarán's excavations in Axlor (Dima, Biscay). Our study first presented two deciduous teeth  
4 and a parietal fragment found in an undisturbed Mousterian context, all of which show  
5 morphological features consistent with a Neandertal classification (Gómez-Olivencia et al., 2020;  
6 Supplementary Text S1). Our study also reassessed the human remains previously described by  
7 Basabe (1973), likely belonging to a single individual and traditionally classified as a Neandertal  
8 (see e.g., Rostro Carmona, 2013). However, our metric and morphological assessment suggested  
9 stronger affinities with modern humans. Recently, a reply to our article has been published,  
10 focusing on the remains previously published by Basabe (1973). In their reply, González-Urquijo,  
11 Bailey, & Lazuen (2021: 553) state that "Axlor's level IV human remains are convincingly  
12 Neanderthals", thus concluding that our taxonomic classification "is not supported by the  
13 anatomical evidence" and that the "balance of the evidence-morphological and stratigraphic-is most  
14 consistent with a Neandertal classification for these teeth" (González-Urquijo et al., 2021: 557).  
15 These authors take issue with two aspects: the taxonomic classification of the human remains found  
16 in 1967 and the discussion and reinterpretation of the stratigraphic context of these remains.

17 Here we address the points raised by González-Urquijo et al. (2021).

## 18 **1 The taxonomic attribution of the human remains found in 1967**

19 The human remains found in 1967 comprise four teeth (left P<sup>4</sup>-M<sup>3</sup>) found on September 7<sup>th</sup>  
20 1967 in the square 13F at a depth of 265 cm. Two of these teeth (M<sup>1</sup> and M<sup>2</sup>) were found in a  
21 maxillary fragment. Additionally, a left canine was found on September 8<sup>th</sup> in the square 13E at a  
22 depth of 285 cm (Gómez-Olivencia et al., 2020: Figure S6). Two of these teeth (the C' and the M<sup>2</sup>)  
23 are currently lost, and therefore, our taxonomic assessment was based on the P<sup>4</sup>, M<sup>1</sup> and M<sup>3</sup>. All  
24 these remains were originally attributed to the Mousterian level III by Barandiarán (Barandiarán,  
25 1980; see also Gómez-Olivencia et al., 2020: Figure S6). However, based on the depth of the  
26 findings and the depth attributed by Barandiarán to the level IV in 1968 (Barandiarán, 1980), they

1  
2 have been later and repeatedly attributed to level IV (Basabe, 1982; González Urquijo, Ibáñez  
3  
4 Estévez, Ríos Garaizar, & Bourguignon, 2006; Lazuen Fernández & González-Urquijo, 2019-  
5  
6 2020).  
7

8  
9 González-Urquijo et al. (2021: 553) oversimplified our taxonomic assessment, stating that  
10  
11 we concluded that “those remains should instead be assigned to a single Upper Paleolithic *Homo*  
12  
13 *sapiens* individual”. However, our study states that “based on both morphological and size  
14  
15 characteristics, this individual shows stronger affinities with modern humans than with  
16  
17 Neandertals” (Gómez-Olivencia et al., 2020: 486), while we also clearly recognized that some of  
18  
19 the teeth (e.g., the canine and the P<sup>4</sup>) showed some features that are present in high percentages in  
20  
21 Neandertals, but are not exclusive of this group. In our discussion, we hypothesized that “these  
22  
23 human remains could belong to an UPMH [Upper Paleolithic modern human], which should be  
24  
25 tested in the near future using direct C14 datings”. This claim was based on the results of our  
26  
27 morphometric analyses, the absence of Holocene recent prehistory remains from the Axló  
28  
29 sequence and the presence of an early Upper Paleolithic occupation in the site (Gómez-Olivencia et  
30  
31 al., 2020: 488). This was summarized in our abstract, which states that the teeth from Axló  
32  
33 “may represent one of the scarce examples of Upper Paleolithic modern human remains in the northern  
34  
35 Iberian Peninsula, which should be confirmed by direct dating” (Gómez-Olivencia et al., 2020:  
36  
37 475). Thus, we suggested that these remains may have belonged to an UPMH, the confirmation of  
38  
39 which would require further analyses, but we did not discard other possibilities, such as these teeth  
40  
41 having a more recent chronology.  
42  
43  
44  
45  
46  
47  
48  
49

## 50 **2 Dental morphological analysis**

51  
52 González-Urquijo et al. (2021) disagree with some of our morphological assessments and  
53  
54 take issue with the employed methodology. The taxonomic assessment of the Axló 1967 remains  
55  
56 by González-Urquijo et al. (2021) pivots mainly around the morphology of the lost canine, the  
57  
58 crown morphology of the P<sup>4</sup> and the morphology of the M<sup>1</sup>.  
59  
60

1  
2 Firstly, González-Urquijo et al. conclude that “the morphological features of the Axlor teeth  
3  
4 seem to be either Neanderthal-like or ambiguous, but there is no reason to suggest these teeth  
5  
6 belong to *H. sapiens*”. Their comments on our taxonomic assessment are limited to the crown  
7  
8 morphology; they do not comment on other features that can be of taxonomic interest (e.g., the root  
9  
10 morphology or the P<sup>4</sup>), nor do they attempt to carry out additional analyses despite the original  
11  
12 micro-CT scans being publicly available.  
13  
14

15  
16 González-Urquijo et al. (2021: 553) agree with us that the teeth from Axlor are small but  
17  
18 they disregard this information as they consider that crown size is a poor discriminator between  
19  
20 Neandertals and *Homo sapiens*. The dimensions of the Axlor samples are closer to the Upper  
21  
22 Paleolithic *Homo sapiens* (HS) means (C<sup>1</sup>, P<sup>4</sup>) or to the recent HS means (M<sup>1</sup>, M<sup>2</sup>, M<sup>3</sup>) than to  
23  
24 Neandertals. The published BL measurements of the lost M<sup>2</sup> are below (and outside) our Neandertal  
25  
26 and UP range of variation. In addition, our size assessment was complemented with shape  
27  
28 information (i.e., form analysis). Geometric morphometric analysis of form variation (including size  
29  
30 and shape) is a widely used way to assess taxonomic affinity (Compton et al., 2021; Garralda et al.,  
31  
32 2020), and it yielded informative results in some teeth from Axlor (M<sup>1</sup> and M<sup>3</sup>) but not in others  
33  
34 (P<sup>4</sup>), as we clearly stated in our study (Gómez-Olivencia et al., 2020).  
35  
36  
37

38  
39 González-Urquijo et al. (2021: 553) also consider that the grades of expression of the non-  
40  
41 metric traits for the P<sup>4</sup>, M<sup>1</sup> and M<sup>3</sup>, “rather than being *H. sapiens*-like [...] have trait express that are  
42  
43 ambiguous”. We struggle to understand where we disagree here, as our study explicitly stated that  
44  
45 some of the Axlor teeth have features that are observed in Neandertals in high frequencies (e.g., the  
46  
47 bifurcated essential crest of both the lingual and buccal cusps in the P<sup>4</sup> at the EDJ level). González-  
48  
49 Urquijo et al. (2021: 553) also consider that “most of the traits do not clearly distinguish  
50  
51 Neanderthals and Upper Paleolithic *H. sapiens*”. For that exact reason, we combined qualitative and  
52  
53 quantitative methods for the taxonomic assessment of the Axlor teeth, as opposed to the qualitative-  
54  
55 only evaluation performed by González-Urquijo and colleagues.  
56  
57  
58  
59  
60



1  
2 González-Urquijo et al. (2021: 553) disagree with one of our assessments of the M<sup>1</sup>  
3  
4 characters as they consider that the hypocone is slightly larger than the metacone at the occlusal  
5  
6 enamel surface (OES) and the enamel-dentine junction (EDJ). However, they do not provide an  
7  
8 image showing how they measured these areas. Indeed, our original study did not include a formal  
9  
10 metric comparison of the hypocone and the metacone of the M<sup>1</sup> because the high degree of wear of  
11  
12 this molar makes these measurements tentative. Therefore, we simply stated that both the hypocone  
13  
14 and the metacone of Axlor show a grade 4 of expression based on the ASUDAS scoring system  
15  
16 (Turner, Nichol, & Scott, 1991; Gómez-Olivencia et al., 2020: Table 4).  
17  
18  
19

20  
21 González-Urquijo et al. (2021: 553) enumerate a series of methodological issues related to  
22  
23 the analysis of the Axlor's M<sup>1</sup> that were explicitly addressed or that indicate their lack of  
24  
25 understanding of the methods we used in our study. Firstly, they consider "curious that a  
26  
27 quantitative assessment of this tooth was even undertaken since Gómez-Robles et al. explicitly  
28  
29 excluded severely worn teeth". Our study explicitly discussed the limitations of identifying cusp  
30  
31 tips in worn molars, which is why we performed the geometric morphometric analysis of the M<sup>1</sup>  
32  
33 from Axlor twice: once using both the cusp tips and the outline, and once using only the outline.  
34  
35 Discriminant analyses indicated a probability of around 99% for this molar to belong to *Homo*  
36  
37 *sapiens* in both cases.  
38  
39

40  
41 González-Urquijo et al. (2021) state that we did not indicate whether the outline was  
42  
43 corrected. The outline of the M<sup>1</sup> was indeed corrected as it is the standard procedure in geometric  
44  
45 morphometric analyses of molar shape (Gómez-Robles et al., 2007). We clearly stated that we used  
46  
47 "the Neandertal and modern human samples used in Gómez-Robles et al. (2007), Gómez-Robles,  
48  
49 Bermúdez de Castro, Martínón-Torres, Prado-Simón, and Arsuaga (2012), and Gómez-Robles,  
50  
51 Martínón-Torres, Bermúdez de Castro, Prado-Simón, and Arsuaga (2011)." (Gómez-Olivencia et  
52  
53 al., 2020: 479). While not explicitly stated, this was meant to imply that the same methodology was  
54  
55 used: "When mesial and/or distal borders of the teeth were affected by light interproximal wear,  
56  
57 original borders were estimated by reference to overall crown shape and the buccolingual extent of  
58  
59  
60

1  
2 the wear facets, following Wood and Engleman (1988) and Bailey (2004)” (Gómez-Robles et al.,  
3  
4 2007: 275-276).  
5

6         Additionally, González-Urquijo et al. (2021) estimate that between 30% and 37% (between  
7  
8 9 and 11) of the semilandmarks are missing in Axlör’s M<sup>1</sup> (see their Figure 1, where they provide a  
9  
10 new outline for Axlör’s M<sup>1</sup>). This outline assumes that landmarks 22-28 are affected by wear, and  
11  
12 thus the suggested outline enlarges both the metacone and, especially, the hypocone. While we fully  
13  
14 agree with González-Urquijo and colleagues on the correction performed on the mesial outline,  
15  
16 which is similar to the one we performed to carry out our analysis, their distal correction is clearly  
17  
18 incorrect. An inspection of the Axlör’s M<sup>1</sup> 3D model (which is freely available in Figshare; see the  
19  
20 Data Availability Statement below and in Gómez-Olivencia et al., 2020) clearly reveals that the  
21  
22 surface of the inter-proximal facet is very limited and does not extent to the hypocone  
23  
24 semilandmarks (Figure 1). Therefore, the outline correction illustrated by González-Urquijo et al.  
25  
26 on the distal aspect of the molar substantially exceeds the actual interproximal wear of this molar,  
27  
28 making it look more Neandertal.  
29  
30  
31  
32  
33

34         González-Urquijo et al. (2021: 554) state that “the absence of clear divisions between cusps  
35  
36 complicates accurately positioning the centroid that is used to place the semilandmarks.” Firstly, the  
37  
38 location of the centroid depends on the location of the cusp tips, not on the presence of “clear  
39  
40 divisions between cusps”. As stated above, the degree of wear of this molar does interfere with the  
41  
42 accurate location of the four landmarks that the centroid position is based on. However, the specific  
43  
44 location of each semilandmark on the outline, which does depend on the calculated centroid, is  
45  
46 modified through a sliding algorithm that, again, is a standard step of geometric morphometric  
47  
48 analyses (Bookstein, 1996, 1997; Bookstein, Sampson, Connor, & Streissguth, 2002; Gunz,  
49  
50 Mitteroecker, & Bookstein, 2005). Hence, any ambiguity in the original positioning of the  
51  
52 semilandmarks is ameliorated by the sliding procedure.  
53  
54  
55  
56  
57  
58  
59  
60

[INSERT FIGURE 1 HERE]

Our geometric morphometric analysis revealed that: a) Axlors M<sup>1</sup> falls closer to the modern human consensus shape than to the Neandertal consensus shape; and b) the M<sup>1</sup> discriminant analysis provided a very high probability to belong to a modern human, while P<sup>4</sup> and M<sup>3</sup> were not conclusive (Gómez-Olivencia et al., 2020). However, it is widely accepted that upper first molars are one of the most diagnostic teeth when distinguishing between Neandertals and modern humans (e.g., Gómez-Robles et al., 2007). When considering PC1 and PC2, the Axlors M1 falls closer to both recent and fossil *Homo sapiens* centroids than to the Neandertal distribution centroid. Overlap is minimal in this plot and only one Neandertal individual from our Neandertal sample (the one from Pech de l'Azé) falls close to Axlors and the recent human centroid (Gómez-Olivencia et al., 2020: Figure 6).

It is also important to note that the discriminant analyses in Gómez-Olivencia et al. (2020) were based on the first 10 PCs not just on the two first PCs shown in the figures. Although not reported in our original study, we include here the cross-validated percentages of correct classification: 93.3% overall, with 73.3% of Neandertals and 100% of modern humans correctly classified. Additionally, when the form space is analyzed, the Axlors M<sup>1</sup> falls outside the range of variation of the Neandertal sample (Gómez-Olivencia et al., 2020).

With respect to the other teeth, we agree with González-Urquijo et al. (2021) that the well-developed mesial ridge and lingual tubercle present in the Axlors canine are traits present in Neandertals in high percentages. Interestingly, they mention the presence of one UP canine (out of 10) with a well-developed mesial ridge, but then question its taxonomic attribution. Our revision of published UP specimens reveals that a tuberculum dentale is also present in other UP specimens (Sunghir 2, Sunghir 3, Mladeč 9; Frayer, Jelínek, Oliva, & Wolpoff, 2006; Trinkaus, Buzhilova, Mednikova, & Dobrovolskaya, 2014). Moreover, Mladeč 9 also presents a well-developed mesial

1  
2 ridge (although smaller than the distal one), which is attached to the tuberculum dentale as in the  
3  
4 canine from Axlor (see Frayer et al., 2006: Figure 19 vs Basabe, 1973: Figure 7).  
5

6 González-Urquijo et al. (2021: 553) disagree with our assessment of two additional traits  
7  
8 and state that the “lingual essential crest of the P<sup>4</sup> that Gómez-Olivencia et al. scored as absent is  
9  
10 clearly present at both the OES and the EDJ”. However, we clearly stated that the lingual essential  
11  
12 crest is present at the EDJ with a score of 2. This crest was scored as “NO” at the OES level, which  
13  
14 means “non observable” (although we failed to spell this out in the legend of our table). Unlike  
15  
16 González-Urquijo and colleagues, we considered that the assessment of this trait at the OES level is  
17  
18 too tentative given the substantial degree of wear present in this tooth. In our table, those traits that  
19  
20 are absent are clearly indicated by “0 (absent)” (Gómez-Olivencia et al., 2020: Table 3). While we  
21  
22 admit our error for not spelling out the abbreviation, this does not make these teeth any more  
23  
24 Neandertal.  
25  
26  
27  
28

29 In the case of the hypocone in the M<sup>3</sup>, we considered that this as an additional  
30  
31 cusplet/tubercle, since it is not clearly visible in the original OES (and thus our scoring as 0). As the  
32  
33 scoring of other qualitative traits, our assessment (as González-Urquijo and colleagues’) bears  
34  
35 certain degree of subjectivity, which is why a quantitative assessment is always preferred. In any  
36  
37 case, even if the presence of a hypocone in the M<sup>3</sup> were accepted, this trait would still be unable to  
38  
39 distinguish between Neandertals and modern humans (see Martín-Torres et al., 2012).  
40  
41  
42  
43  
44

#### 45 **4 Stratigraphic study**

46  
47 In his field notes and in the published report of Axlor excavations, J. M. de Barandiarán  
48  
49 describes quite clearly the context of the human remains: i) The site of Axlor was severely affected  
50  
51 during the end of the XIX century and or the beginning of the XX century, resulting in the  
52  
53 destruction of a large part of the site, mostly the upper levels, situated in the right part of the site  
54  
55 (Barandiarán, 1980); ii) The human remains under discussion, according to his field notes, were  
56  
57 found in the limit of the preserved area, immediately below the mixed sediment that covered the  
58  
59  
60

1  
2 destroyed area, and they were the first archaeological remains noted in square 13F; iii) The remains  
3  
4 were found in a loose sediment that contrasts with the encrusted sediments excavated beside squares  
5  
6 13E and 13F by J. González Urquijo between 2000 and 2008 (González Urquijo, 2009; González  
7  
8 Urquijo et al., 2003).

9  
10  
11 In their reply, González-Urquijo et al. (2021) do not present any new information that  
12  
13 contradicts the description made by J. M. de Barandiarán or by González-Urquijo's own team in  
14  
15 previous reports and publications (Barandiarán, 1980; González Urquijo et al., 2006; Rios Garaizar  
16  
17 et al., 2003). Moreover, some of the interpretations and data presented by González-Urquijo et al.  
18  
19 (2021) suffer from important omissions:

20  
21  
22 i) The radiocarbon date table published by González-Urquijo et al. (2021) does not include the  
23  
24 spatial information of the samples, nor the information about methods, pretreatment and quality of  
25  
26 the samples. Additionally, they omit two published dates from level F made by themselves (Rios-  
27  
28 Garaizar, 2017). One of these dates yielded a result of  $33,310 \pm 360$  (sample Beta-225485) which is  
29  
30 extremely important for addressing possible disturbances at the site (Rios-Garaizar, 2012).  
31  
32 González-Urquijo et al. (2021) reassign one sample (sample Beta-144262) traditionally published as  
33  
34 belonging to level D (González Urquijo et al., 2006) to level B without further explanation. Finally,  
35  
36 they omit the radiocarbon dates from Axlor published by Marín-Arroyo et al. (2018) (see Table 1).  
37  
38  
39  
40  
41  
42

43 [INSERT TABLE 1 HERE]  
44  
45  
46  
47

48 ii) González-Urquijo et al. (2021) base their argument on the poor preservation of the Upper  
49  
50 Paleolithic (UP) faunal remains found in F8 and F9, but they neglect to mention that a human tooth  
51  
52 was found in this level in 2008 (González Urquijo, 2009). Furthermore, González-Urquijo et al.  
53  
54 (2021) propose a geometry for the UP level omitting that original extension of this level is unknown  
55  
56 for two reasons. First, due to the aforementioned partial destruction of the site; and second, due to  
57  
58  
59  
60

1  
2 the excavation of J. M. de Barandiarán who barely recovered, accordingly with the available  
3 records, 13 lithic artifacts from level I and 8 lithic artifacts from level II.

4  
5  
6 iii) The currently available information about the stratigraphic context adjacent to the place where  
7 the human remains under discussion were found indicates that the stratigraphic sequence is very  
8 difficult to read, that the sediment is encrusted (González Urquijo et al., 2006), and that no new  
9 human remains have been recovered there (González Urquijo et al., 2003).  
10  
11  
12  
13  
14  
15  
16  
17

## 18 **5 Discussion and conclusions**

19  
20 Here we reiterate that a Neandertal classification for the teeth found in Axlor in 1967 is  
21 unlikely. Firstly, the supposedly Neandertal traits discussed by González-Urquijo and colleagues  
22 (2021) are ambiguous, unclear or based on an erroneous assessment of the teeth. Second, we show  
23 that González-Urquijo et al. (2021) do not present any new information that contradicts the  
24 stratigraphic description made by J. M. de Barandiarán or by his team in previous reports and  
25 publications, and that they omit important information regarding the archaeological context of the  
26 human remains found in 1967.  
27  
28  
29  
30  
31  
32  
33  
34  
35

36 As stated in our original publication, the body of evidence points to a modern human  
37 classification for these teeth, with very high probabilities in one of the most informative teeth, the  
38 M<sup>1</sup>. Though species-specific morphologies exist, dental size and shape are variable in both species  
39 and unable to unquestionably discriminate between them, particularly for specimens that do not  
40 show the most extreme species-specific traits. In addition, the Middle to Upper Paleolithic transition  
41 entailed a complex scenario that included both cultural changes and population replacement. Recent  
42 developments in ancient DNA analyses have complicated the picture, with evidence of admixture  
43 between Neandertals and modern humans (Fu et al., 2015). Fossil remains with ambiguous  
44 Neandertal and modern human traits may represent the anatomical evidence of those admixture  
45 events (see Compton et al., 2021), although molecular analyses are required to confirm this point.  
46  
47  
48  
49  
50  
51  
52  
53  
54  
55  
56  
57  
58  
59  
60

1  
2 In sum, the teeth found in Axlor in 1967 show a few features which typically appear in  
3  
4 Neandertals in high frequencies, but which are also present in *H. sapiens*. However, most traits,  
5  
6 including the quantitative morphometric analysis of the M<sup>1</sup> show *H. sapiens* affinities. Therefore,  
7  
8 we favor this taxonomic classification. Genetic analyses and direct dating, however, are the only  
9  
10 way forward to unequivocally clarify their chronology and further inform discussions about their  
11  
12 ancestry.  
13  
14  
15  
16  
17

## 18 **ACKNOWLEDGMENTS**

19  
20 This research has received support from the Spanish Ministerio de Ciencia e Innovación  
21  
22 (proyecto PGC2018-093925-B-C33, MCI/AEI/FEDER, UE), Research Group IT1418-19 from the  
23  
24 Eusko Jaurlaritza-Gobierno Vasco, and N. Ergal Foundation. AGO was supported by Ramón y  
25  
26 Cajal fellowship (RYC-2017-22558). NS was supported by DEATHREVOL project that has  
27  
28 received funding from the European Research Council (ERC) under the European Union's Horizon  
29  
30 2020 research and innovation program (Grant agreement No. 949330) and by Ramón y Cajal  
31  
32 fellowship (RYC2020-029656-I). DLO was supported by an MSC Actions Individual Fellowship  
33  
34 (Project N°895713). IA-C acknowledges the support by the University of the Basque Country  
35  
36 UPV/EHU grant GIU19/027. We would like to thank the Editor, the AE, and the reviewers for very  
37  
38 useful comments that have helped to improve this paper.  
39  
40  
41  
42  
43  
44  
45

## 46 **Data Availability Statement**

47  
48 The original micro-ct scans, the derived segmentation files, and 3D volumes are available in  
49  
50 figshare at <https://doi.org/10.6084/m9.figshare.10308272>.  
51  
52  
53

## 54 **REFERENCES**

55  
56  
57 Bailey, S. E. (2004). A morphometric analysis of maxillary molar crowns of Middle-Late Pleistocene  
58  
59 hominins. *Journal of Human Evolution*, 47(3), 183-198. doi:10.1016/j.jhevol.2004.07.001  
60

- 1  
2 Barandiarán, J. M. (1980). Excavaciones en Axlor. 1967-1974. In J. M. Barandiarán (Ed.), *Obras*  
3 *Completas de José Miguel de Barandiarán Tomo XVII* (pp. 127-384). Bilbao: La Gran Enciclopedia  
4 Vasca.
- 5 Basabe, J. M. (1973). Dientes humanos del Musteriense de Axlor (Dima, Vizcaya). *Trabajos de*  
6 *Antropología*, 16, 187-207.
- 7 Basabe, J. M. (1982). Restos fósiles humanos de la región Vasco-Cantábrica. *Cuadernos de Sección.*  
8 *Antropología-Etnografía Prehistoria-Arqueología*, 1, 67-84.
- 9 Bookstein, F. L. (1996). Applying landmark methods to biological outline data. In K. V. Mardia, C. A. Gill  
10 & I. L. Dryden (Eds.), *Image Fusion and Shape Variability Techniques*. Leeds: Leeds University  
11 Press.
- 12 Bookstein, F. L. (1997). Landmark methods for forms without landmarks: morphometrics of group  
13 differences in outline shape. *Medical Image Analysis*, 1(3), 225-243. doi:10.1016/S1361-  
14 8415(97)85012-8
- 15 Bookstein, F. L., Sampson, P. D., Connor, P. D., & Streissguth, A. (2002). Midline corpus callosum is a  
16 neuroanatomical focus of fetal alcohol damage. *The Anatomical Record*, 269.
- 17 Compton, T., Skinner, M. M., Humphrey, L., Pope, M., Bates, M., Davies, T. W., . . . Stringer, C. (2021).  
18 The morphology of the Late Pleistocene hominin remains from the site of La Cotte de St Brelade,  
19 Jersey (Channel Islands). *Journal of Human Evolution*, 152, 102939.  
20 doi:10.1016/j.jhevol.2020.102939
- 21 Frayer, D. W., Jelínek, J., Oliva, M., & Wolpoff, M. H. (2006). Aurignacian female crania and teeth from  
22 the Mladeč Caves, Moravia, Czech Republic. In M. Teschler-Nicola (Ed.), *Early Modern Humans*  
23 *at the Moravian Gate. The Mladeč Caves and their remains* (pp. 185-272). Wien: Springer.
- 24 Fu, Q., Hajdinjak, M., Moldovan, O. T., Constantin, S., Mallick, S., Skoglund, P., . . . Pääbo, S. (2015). An  
25 early modern human from Romania with a recent Neanderthal ancestor. *Nature*, 524, 216-219.  
26 doi:10.1038/nature14558
- 27 Garralda, M. D., Maureille, B., Le Cabec, A., Oxilia, G., Benazzi, S., Skinner, M. M., . . . Vandermeersch,  
28 B. (2020). The Neanderthal teeth from Marillac (Charente, Southwestern France): Morphology,  
29 comparisons and paleobiology. *Journal of Human Evolution*, 138, 102683.  
30 doi:10.1016/j.jhevol.2019.102683
- 31 Gómez-Olivencia, A., López-Onaindia, D., Sala, N., Balzeau, A., Pantoja-Pérez, A., Arganda-Carreras, I., .  
32 . . . Gómez-Robles, A. (2020). The human remains from Axlor (Dima, Biscay, northern Iberian  
33 Peninsula). *American Journal of Physical Anthropology*, 172(3), 475-491. doi:10.1002/ajpa.23989
- 34 Gómez-Robles, A., Bermúdez de Castro, J. M., Martínón-Torres, M., Prado-Simón, L., & Arsuaga, J. L.  
35 (2012). A geometric morphometric analysis of hominin upper second and third molars, with  
36 particular emphasis on European Pleistocene populations. *Journal of Human Evolution*, 63(3), 512-  
37 526. doi: <http://dx.doi.org/10.1016/j.jhevol.2012.06.002>
- 38 Gómez-Robles, A., Martínón-Torres, M., Bermúdez de Castro, J. M., Margvelashvili, A., Bastir, M.,  
39 Arsuaga, J. L., . . . Martínez, L. M. (2007). A geometric morphometric analysis of hominin upper  
40 first molar shape. *Journal of Human Evolution*, 53, 272-285. doi:10.1016/j.jhevol.2007.02.002
- 41 Gómez-Robles, A., Martínón-Torres, M., Bermúdez de Castro, J. M., Prado-Simón, L., & Arsuaga, J. L.  
42 (2011). A geometric morphometric analysis of hominin upper premolars. Shape variation and  
43 morphological integration. *Journal of Human Evolution*, 61(6), 688-702.  
44 doi:10.1016/j.jhevol.2011.09.004
- 45 González Urquijo, J. (2009). Axlor. IX Campaña. *Arkeoikuska*, 08, 245-248.
- 46 González Urquijo, J., & Ibáñez Estévez, J. J. (2002). Abrigo de Axlor (Dima). *Arkeoikuska*, 2001, 90-93.
- 47 González Urquijo, J., Ibáñez Estévez, J. J., & Ríos Garaizar, J. (2003). *Excavación en el yacimiento*  
48 *arqueológico de Axlor (Dima, Bizkaia). Un estudio arqueológico y antropológico de la transición*  
49 *entre el Paleolítico Medio y el Superior. La extinción de los neandertales y la aparición de los*  
50 *humanos modernos en el País Vasco*.
- 51 González Urquijo, J., Ibáñez Estévez, J. J., Ríos Garaizar, J., & Bourguignon, L. (2006). Aportes de las  
52 nuevas excavaciones en Axlor sobre el final del Paleolítico Medio. In V. Cabrera Valdés, F.  
53 Bernaldo de Quirós Guidotti & J. M. Maíllo Fernández (Eds.), *En el centenario de la cueva de El*  
54  
55  
56  
57  
58  
59  
60



- 1  
2 *Castillo: el ocaso de los neandertales* (pp. 269-291). Santander: Universidad Nacional de  
3 Educación a Distancia – UNED.
- 4 González-Urquijo, J., Bailey, S. E., & Lazuen, T. (2021). Axlors level IV human remains are convincingly  
5 Neanderthals: A reply to Gómez-Olivencia et al. *American Journal of Physical Anthropology*,  
6 *176*(4), 553-558. doi:10.1002/ajpa.24252
- 7  
8 Gunz, P., Mitteroecker, P., & Bookstein, F. L. (2005). Semilandmarks in three dimensions. In D. Slice  
9 (Ed.), *Modern morphometrics in Physical Anthropology* (pp. 73-98). New York: Kluwer  
10 Academic/Plenum Publishers.
- 11 Lazuen Fernández, T., & González-Urquijo, J. (2019-2020). El estudio de las formas de vida de las  
12 sociedades neandertales en el yacimiento de Axlors (Dima, Bizkaia): las excavaciones de J.M.  
13 Barandiaran y el proyecto del siglo XXI. *Anuario de Eusko Folklore Urtekaria*, *54*, 47-69.
- 14 Marín-Arroyo, A. B., Rios-Garaizar, J., Straus, L. G., Jones, J. R., de la Rasilla, M., González Morales, M.  
15 R., . . . Ocio, D. (2018). Chronological reassessment of the Middle to Upper Paleolithic transition  
16 and Early Upper Paleolithic cultures in Cantabrian Spain. *Plos one*, *13*(4), e0194708.  
17 doi:10.1371/journal.pone.0194708
- 18  
19 Martínón-Torres, M., Bermúdez de Castro, J. M., Gómez-Robles, A., Prado-Simón, L., & Arsuaga, J. L.  
20 (2012). Morphological description and comparison of the dental remains from Atapuerca-Sima de  
21 los Huesos site (Spain). *Journal of Human Evolution*, *62*(1), 7-58.
- 22 Rios Garaizar, J., González Urquijo, J. E., & Ibáñez Estévez, J. J. (2003). La excavación en Axlors. Las  
23 formas de vida de los últimos neandertales. *Boletín de la SEDECK*, *5*, 62-83.
- 24 Rios-Garaizar, J. (2012). *Industria lítica y sociedad en la transición del Paleolítico Medio al Superior en*  
25 *torno al Golfo de Bizkaia*. Santander: PubliCan-Ediciones de la Universidad de Cantabria.
- 26 Rios-Garaizar, J., 2017. A new chronological and technological synthesis for Late Middle Paleolithic of the  
27 Eastern Cantabrian Region. *Quaternary International*, *433*, 50-63.
- 28 Rostro Carmona, J. (2013). Estudio comparado de las piezas dentales de *Homo neanderthalensis* del  
29 yacimiento Musteriense de Axlors (Dima, Vizcaya). *CKQ Estudios de Cuaternario/Kuaternario*  
30 *Ikasketak/Quaternary Studies*, *3*, 91-100.
- 31  
32 Trinkaus, E., Buzhilova, A. P., Mednikova, M. B., & Dobrovolskaya, M. V. (2014). *The People of Sunghir.*  
33 *Burials, Bodies, and Behavior in the Earlier Upper Paleolithic*. Oxford: Oxford University Press.
- 34 Turner II, C. G., Nichol, C. R., & Scott, G. R. (1991). Scoring procedures for key morphological traits of  
35 the permanent dentition: the Arizona State University dental anthropology system. In M. Kelley &  
36 C. Larsen (Eds.), *Advances in Dental Anthropology* (pp. 13-31). New York: Wiley-Liss.
- 37  
38 Wood, B. A., & Engleman, C. A. (1988). Analysis of the dental morphology of Plio-Pleistocene hominids.  
39 V. Maxillary postcanine tooth morphology. *Journal of Anatomy*, *161*, 1-35.
- 40  
41  
42  
43  
44  
45  
46  
47  
48  
49  
50  
51  
52  
53  
54  
55  
56  
57  
58  
59  
60

1  
2  
3  
4  
5  
6  
7  
8  
9  
10  
11  
12  
13  
14  
15  
16  
17  
18  
19  
20  
21  
22  
23  
24  
25  
26  
27  
28  
29  
30  
31  
32  
33  
34  
35  
36  
37  
38  
39  
40  
41  
42  
43  
44  
45  
46  
47  
48  
49  
50  
51  
52  
53  
54  
55  
56  
57  
58  
59  
60  
FIGURE LEGENDS

Figure 1. A) Semilandmarks proposed by González-Urquijo et al. (2021) as an accurate correction of Axlor's M<sup>1</sup> outline; B) Corrected outline used by Gómez-Olivencia et al. (2020) in their original assessment. C and D) Occlusal-distal showing that the extension of the distal facet (marked in red in D) does not affect the occlusal outline. E) Outline of a M<sup>1</sup> from Krapina (Krapina 100) showing the bulging hypocone, typical of Neandertal populations (and also of European Middle Pleistocene populations) (Bailey, 2004; Gómez-Robles et al., 2007; Martínón-Torres, Bermúdez de Castro, Gómez-Robles, Prado-Simón, & Arsuaga, 2012).

Table 1  
Available radiocarbon dates for Axlor late Middle Paleolithic levels B, D and F.

Level*	Sample reference	Lab Code	Date (BP)	Method	Material	Taxon, anatomical part	%C	%N	C:N	$\delta^{13}\text{C}$	$\delta^{13}\text{C}$ (‰ VPDB)	$\delta^{15}\text{N}$ (‰ AIR)	References
B**	na	Beta-144262	42,010±1280	AMS	Bone	Non determ.							González Urquijo & Ibañez Estévez, 2002; González Urquijo et al., 2021
B	na	Beta-203108	42,720±900	AMS	Bone	<i>Bos/Bison</i> ; tibia							González Urquijo et al., 2021
D	na	Beta-203107	44,920±1950	AMS	Bone	<i>Bos/Bison</i> ; axis							González Urquijo et al., 2021
D	na	Beta-225486	>43,000	AMS	Bone	<i>Cervus</i> ; metapodial							Ríos-Garaizar, 2012; González Urquijo et al., 2021
F	na	Beta-225478	>47,500	AMS	Bone	<i>Cervus</i> ; metapodial							Ríos-Garaizar, 2012
F	na	Beta-225485	33,310±360	AMS	Bone	<i>Cervus</i> ; metapodial							Ríos-Garaizar, 2012
IV	AX.11C.290.149	OxA-32428	>49,300	UF-AMS	Bone	<i>Cervus elaphus</i> ; phalanx 2	42.3	3.5	3.3	-19.8	3.5	3.1	Marín-Arroyo et al., 2018
IV	AX.11C.300.178	OxA-32429	>49,900	UF-AMS	Bone	<i>Cervus elaphus</i> ; carpal	43.0	6.3	3.3	-19.2	6.3	6.0	Marín-Arroyo et al., 2018

\* Level attribution with letters (B, D and F) correspond with 2000-2008 excavations; Roman ordinals with 1967-1974 excavations.

\*\* In the original publication this sample is attributed to level D, in the recent publication to level B.

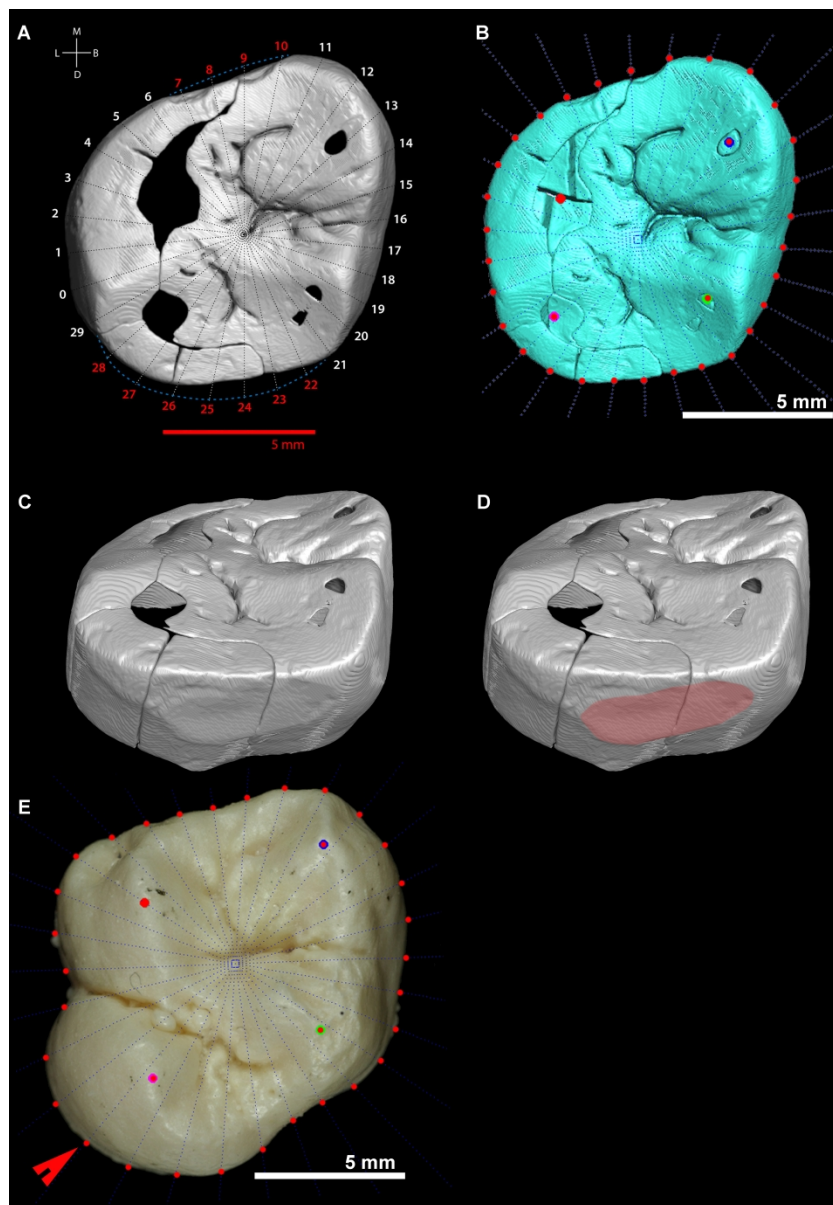


Figure 1. A) Semilandmarks proposed by González-Urquijo et al. (2021) as an accurate correction of Axló's M1 outline; B) Corrected outline used by Gómez-Olivencia et al. (2020) in their original assessment. C and D) Occlusal-distal showing that the extension of the distal facet (marked in red in D) does not affect the occlusal outline. E) Outline of a M1 from Krapina (Krapina 100) showing the bulging hypocone, typical of Neandertal populations (and also of European Middle Pleistocene populations) (Bailey, 2004; Gómez-Robles et al., 2007; Martín-Torres, Bermúdez de Castro, Gómez-Robles, Prado-Simón, & Arsuaga, 2012).