



HAL
open science

Assessing reliability and validity of different stiffness measurement tools on a multi-layered phantom tissue model

Katja Bartsch, Andreas Brandl, Patrick Weber, Jan Wilke, Sabine Bensamoun, Wolfgang Bauermeister, Werner Klingler, Robert Schleip

► To cite this version:

Katja Bartsch, Andreas Brandl, Patrick Weber, Jan Wilke, Sabine Bensamoun, et al.. Assessing reliability and validity of different stiffness measurement tools on a multi-layered phantom tissue model. *Scientific Reports*, 2023, 13 (1), pp.815. 10.1038/s41598-023-27742-w . hal-03984656

HAL Id: hal-03984656

<https://hal.science/hal-03984656>

Submitted on 13 Feb 2023

HAL is a multi-disciplinary open access archive for the deposit and dissemination of scientific research documents, whether they are published or not. The documents may come from teaching and research institutions in France or abroad, or from public or private research centers.

L'archive ouverte pluridisciplinaire **HAL**, est destinée au dépôt et à la diffusion de documents scientifiques de niveau recherche, publiés ou non, émanant des établissements d'enseignement et de recherche français ou étrangers, des laboratoires publics ou privés.

Assessing reliability and validity of different stiffness measurement tools on a multi-layered phantom tissue model

Katja Bartsch^{1,2}, Andreas Brandl^{3,4,5}, Patrick Weber⁶, Jan Wilke^{7,8}, Sabine F. Bensamoun⁹, Wolfgang Bauermeister¹⁰, Werner Klingler^{2,11,12}, Robert Schleip^{2,3,12*}

¹Department of Sport Science and Sports, Friedrich-Alexander University Erlangen-Nuremberg, Erlangen, Germany

²Conservative and Rehabilitative Orthopedics, Department of Sport and Health Sciences, Technical University of Munich, Munich, Germany

³Department of Sports Medicine, Faculty for Psychology and Human Movement Science, Institute for Human Movement Science, University of Hamburg, Hamburg, Germany

⁴Department for Medical Professions, Diploma Hochschule, Bad Sooden-Allendorf, Germany

⁵Osteopathic Research Institute, Osteopathie Schule Deutschland, Hamburg, Germany

⁶Department for Physical Activity in Public Health, Institute of Movement and Neurosciences, German Sport University Cologne, Cologne, Germany

⁷Department of Movement Sciences, University of Klagenfurt, Klagenfurt, Austria

⁸Institute of Occupational, Social and Environmental Medicine, Goethe University Frankfurt, Frankfurt/Main, Germany

⁹Sorbonne University, Université de Technologie de Compiègne, CNRS UMR 7338, Biomechanics and Bioengineering, Compiègne, France

¹⁰Kharkiv National Medical University

¹¹SRH Hospital, 72488 Sigmaringen, Germany

¹²Experimental Anaesthesiology, Ulm University, Ulm, Germany

* Correspondence:

Robert Schleip

Robert.Schleip@tum.de

Keywords: soft tissue, muscle stiffness, myotonometry, ultrasound, indentometry.

1 **Abstract**

2 Changes in the mechanical properties (i.e., stiffness) of soft tissues have been linked to
3 musculoskeletal disorders, pain conditions, and cancer biology, leading to a rising demand for
4 diagnostic methods. Despite the general availability of different stiffness assessment tools, it is
5 unclear as to which are best suited for different tissue types and the related measurement
6 depths. The study aimed to compare different stiffness measurement tools' reliability on a
7 multi-layered phantom tissue model (MPTM). A polyurethane MPTM simulated the four layers
8 of the thoracolumbar region: cutis (CUT), subcutaneous connective tissue (SCT), fascia
9 profunda (FPR), and erector spinae (ERS), with varying stiffness parameters. Evaluated
10 stiffness measurement tools included Shore Durometer, Semi-Electronic Tissue Compliance
11 Meter (SCTM), IndentoPRO, MyotonPRO, and ultrasound imaging. Measurements were made
12 by two independent, blinded examiners. Shore Durometer, SCTM, IndentoPRO, and MyotonPRO
13 reliably detected stiffness changes in three of the four MPTM layers, but not in the thin (1 mm
14 thick) layer simulating FPR. With ultrasound imaging, only stiffness changes in layers thicker
15 than 3 mm could be measured reliably. Significant correlations ranging from 0.70 to 0.98 (all p
16 < 0.01) were found. The interrater reliability ranged from good to excellent ($ICC(2,2) =$
17 $0.75\sim 0.98$). The results are encouraging for researchers and clinical practitioners as the
18 investigated stiffness measurement tools are easy-to-use and comparatively affordable.

19 **1 Introduction**

20 Low back pain is the leading cause of years lived with disability, burdening health care systems
21 worldwide ¹. Historically, soft tissues in general and the connective tissues of the
22 thoracolumbar region in particular have received little attention when attempting to clarify the
23 pathophysiological mechanisms of this condition. In recent years, however, research has shed
24 light on the layered soft tissue structures of the low back and their biomechanical
25 characteristics as they contribute to low back health ²⁻⁶.

26 Soft tissue stiffness is a mechanical property, which is defined as a material's resistance to
27 deformation ⁷. Changes in the mechanical properties of soft tissues have been linked to
28 musculoskeletal disorders, injuries, pain conditions, and cancer biology, leading to a rising
29 demand in diagnostic methods for research and clinical practice ^{2,8-13}. However, little data
30 exists to provide evidence-based recommendations for current stiffness assessment tools,
31 requiring further research investigating their measurement properties ^{14,15}. Prior research has
32 suggested to use material phantoms with known viscoelastic properties to obtain valuable
33 results regarding the reliability and concurrent validity of stiffness assessment tools ¹⁶⁻¹⁸.

34 The use of tissue stiffness assessment tools provides a comparatively cost-effective and easy-
35 to-use option for research and clinical practice. Current technologies comprise methods of
36 indentation, myotonometry, as well as ultrasound imaging ^{14,19}.

37 To our knowledge, none of these devices have been tested for reliability on a material phantom
38 model representing the layered soft tissue structures of the human low back area. Analog to
39 'The Princess of the Pea' fairy tale (where the princess demonstrates her sensitivity to feel the
40 slightest stiffness change created by a pea through layers of bedding and thereby proves herself
41 to be a princess) it can be assumed that the sensitivity of a stiffness assessment may be altered
42 when the tissue layer of interest is positioned underneath one or several other tissue layers. In
43 our study, we aimed to create a multi-layered material phantom tissue model (MPTM)

1 mimicking the different layers of the thoracolumbar region. The present study's objective was
2 to evaluate the reliability of various tissue stiffness assessment devices on the MPTM.

3

4 **2 Materials and methods**

5 **2.1 Multi-layered material phantom tissue model**

6 A multi-layered phantom model was developed to mimic the soft tissue layers of the human
7 thoracolumbar region (Figure 1). The model simulated four human tissue layers: cutis (CUT),
8 subcutaneous connective tissue (SCT), fascia profunda (FPR), and erector spinae (ERS). A
9 literature search yielded typical values for the thickness of those tissue layers located lateral to
10 the spinous process of the L3 vertebra, as this measurement site has been used by prior
11 research for stiffness evaluation ^{4,20-22} (Figure 2). Accordingly, a thickness of 3 mm, 6 mm, and
12 1 mm was chosen for CUT, SCT, and FPR respectively. For the ERS - as the most inferior of the
13 four layers - a thickness of 10 mm was chosen, since preliminary explorations of our group had
14 revealed that thickness as upper limit of a reliable assessment of the ultrasound assessment
15 method. Typical stiffness values for the four layers were determined using literature searches
16 as well. Gel pad layers with the identified typical thickness and stiffness values constituted the
17 default measurement set. To mimic stiffness alterations, nine additional phantoms with varying
18 stiffness parameters were produced for each tissue layer, resulting in 40 phantom layer
19 variations overall. The parameters for the artificial stiffness changes for the four tissue layers
20 were determined individually for each layer.

21 All gel pad phantoms measured 30x21 cm, were manufactured from polyurethane material and
22 coated with a 25 µm thick polyurethane foil (Technogel Germany GmbH, Berlingrode). Stiffness
23 values were specified in Shore 000 values, which describe very soft plastic and rubber
24 materials. For further analysis, Shore 000 values were converted to Young's modulus in
25 kPasc²⁵.

26 **2.2 Tissue stiffness assessment tools**

27 **2.2.1 Shore Durometer**

28 The Shore Durometer (Type 1600-00, Rex Gauge, Brampton, ON, Canada) is a standard device
29 for measuring the hardness of various non-metallic materials including rubber and plastic. The
30 instrument contains a spring-loaded interior that senses hardness by applying an indentation
31 load on the material through a probe tip (Ø 2.4 mm). For measurements, the durometer is held
32 perpendicular to the medium and rested by gravity against the material. Hardness in degrees of
33 Shore 00 from 0 to 100 can be read from the analogue dial of the device, with lower Shore
34 values indicating a softer material ²⁶.

35 **2.2.2 Semi-electronic Tissue Compliance Meter**

36 The Semi-electronic Tissue Compliance Meter (STCM, Technical University of Chemnitz,
37 Germany) consists of a force gauge (probe tip surface of 1 cm²) and a platform ring (Ø 8 cm),
38 which slides downward on the force gauge shaft. Through a scale with millimeter increments
39 equipped with a fixable ring, a desired penetration depth can be set. The device furthermore
40 contains a button cell which is used to generate a beep signal upon contact between the ring

1 and the disk. To perform a measurement, the probe tip is placed on the underlying tissue and
2 the examiner applies a downward force on the top of the device until the disk and the ring are
3 brought into contact. This contact generates a beep sound, indicating the end of the
4 measurement. The applied force (in N) can be read from the analogue display of the force
5 gauge. The known penetration force and the applied force can be used to analyze the force-
6 deformation relationship of the material or tissue at hand ^{16,27}.

7 **2.2.3 IndentoPRO**

8 The IndentoPRO is a digital indentometer (Fascia Research Group, Ulm University; Department
9 of Human Movement Sciences, University of Chemnitz, Germany). The device comprises a
10 device body with a load cell (Compression Load Cell FX1901, TE Connectivity, Schaffhausen,
11 Switzerland) and a membrane potentiometer (ThinPot 10kOhm, Spectra Symbol, Salt Lake City,
12 USA) to measure the resistance force and displacement of a circular indentation probe (\emptyset 11.3
13 mm)^{28,29}. To perform a measurement, an indentation depth is selected, and the probe is
14 positioned on the material. The examiner then applies force on top of the device until a beep
15 signal indicates the end of the measurement. Tissue stiffness is defined by the slope of the
16 relationship between indentation depth and force increase. Stiffness values can be read from a
17 digital display and are specified in N/mm, with lower values indicating lower tissue
18 stiffness^{28,30}.

19 **2.2.4 MyotonPRO**

20 The MyotonPRO is a digital palpation device (MyotonAS; Tallinn, Estonia), consisting of a
21 device body and an indentation probe (\emptyset 3 mm). Through the probe, a pre-pressure (0.18 N) is
22 applied to the surface that causes the material underneath to be compressed. A mechanical
23 impulse (0.4 N, 15 ms) is then released by the device, deforming the medium for a short
24 interval. The tissues respond back with a damped oscillation that is recorded by the
25 accelerometer in the MyotonPRO device. Stiffness is recorded in N/mm and can be read from a
26 digital display. Lower values indicate lower tissue stiffness.^{18,31}.

27 **2.2.5 Ultrasound with attached transducer**

28 As described by Jafari and colleagues³² ultrasound images can be recorded in two states: with
29 stress and without stress. For the stress state scenario, compressive stress is imposed by the
30 ultrasound transducer (Philips Lumify with L12-4 linear transducer; contact area 19 x 43,5
31 mm). A force gauge attached through a ring holder measures the applied force (Digital Force
32 Gauge FL-S-100, Kern & Sohn GmbH, Balingen, Germany). The ultrasound images with and
33 without stress states are compared and the length of a vertical line perpendicular to the multi-
34 layered phantom tissue model surface is measured. To determine strain, the measured length
35 of the vertical lines with and without stress are used. Stress is calculated by dividing the
36 applied force (in N) by the transducer contact area. Tissue stiffness is determined as elastic
37 modulus, using the relation between stress and strain under the assumption that stiffness
38 follows linear behavior.

39 **2.3 Measurements**

40 Material phantoms were placed on top of each other according to their natural sequence. The
41 default measurement set served as starting point. To mimic stiffness changes in the MPTM, 10
42 different layer variants representing 10 different stiffness parameters were exchanged one by

1 one, with the other three layers remaining in default measurement set configuration (example:
 2 the 10 gel pads variants for CUT were exchanged and measured one by one with all
 3 measurement devices, while SCT, FPR and ERS remained in default measurement set
 4 configuration; analogous procedure was followed for the other layers). Measurements were
 5 performed by two investigators in a blinded manner, meaning that examiners were not aware
 6 of the stiffness parameters of each gel pad.

7 For the Shore Durometer, the average of five consecutive measurements was used for data
 8 analysis³³. Taken measurements were converted to Young's modulus in kPasc²⁵. For the semi-
 9 electronic STCM, three consecutive measurements at 15 mm penetration depth were taken and
 10 averaged for data analysis¹⁶. For the IndentoPRO, three consecutive measurements were
 11 taken³² at four different indentation depths (2 mm, 5 mm, 8 mm, 10 mm) and averaged for
 12 analysis. Measurements were only accepted when the coefficient of variation (CV) had
 13 maximum value of 5 %. Investigators trained beforehand to conduce indentations with a
 14 consistent force rate of 10 N/s to achieve said level of CV. For the MyotonPRO, the average
 15 value of five consecutive measurements was determined^{15,18}. For the ultrasound,
 16 measurements with 0 kPa, 5 kPa, 10 kPa, and 15 kPa pressure were taken³².

17 2.4 Data analysis and statistics

18 All descriptive data are means \pm standard deviation (SD). To investigate the relationship
 19 between relative changes of stiffness determined with the SMTs and artificial relative Young's
 20 modulus changes of the MPTM, Pearson's product-moment correlation coefficients were
 21 calculated for normal distributed data and Spearman's rank correlation for data that violated
 22 normal distribution assumptions. Linear regression analysis (with log 10 transformation for
 23 non-normally distributed data) was performed with MPTM measurement as dependent
 24 variable and respective SMTs measurement as independent variable. According to Cohen³⁵, the
 25 resulting values were interpreted as 'small' (0.1 to 0.3), 'medium' (0.3 to 0.5) or 'large' (0.5 to
 26 1.0) correlations. Intraclass correlation coefficient (ICC) estimates between MPTM and
 27 IndentoPRO measurement and their 95 % CI were calculated using the R package "irr" version
 28 0.84.1 based on a 2-way mixed-effects model with absolute agreement. Non-normally
 29 distributed data were log-10-transformed. Resulting ICC values were interpreted according to
 30 Fleiss³⁶ as 'poor' (< 0.4), 'fair to good' (0.4 to 0.75) and 'excellent' (> 0.75). For relative
 31 reliability³⁷, the corresponding standard errors of measurement (SEM) were estimated using
 32 the formula:

$$33 \quad SEM = SD * \sqrt{(1 - ICC)} \quad [1].$$

34 The MDC was estimated by reference to the SEM using the formula [2]³⁸:

$$35 \quad MDC = 1.96 * \sqrt{2} * SEM = 1.96 * SD * \sqrt{(1 - ICC)} \quad [2].$$

36 To complement the ICC reliability data, the Bland and Altman test with limits of agreement was
 37 conducted between the two raters and graphed.

1 An alpha level of 0.05 was used to determine statistical significance. LibreOffice Calc version
2 6.4.7.2 (Mozilla Public License v2.0) was used for descriptive statistics. Inferential statistics
3 were carried out with the software R, version 3.4.1 (R Foundation for Statistical Computing,
4 Vienna, Austria).

5 **3 Results**

6 Significant correlations with artificial Young's modulus changes of the MPTM were found for
7 stiffness changes in all layers of the MPTM except for the FPR layer, with effect sizes ranging
8 from 0.70 to 0.98 (all $p < 0.01$). The interrater reliability for all layers except FPR was good to
9 excellent (ICC (2,2) = 0.75~0.98). Figure 3 gives an overview of the results. Figure 4 graphs
10 results for the Bland and Altman test for MyotonPRO, Figure 5 depicts Bland and Altman test
11 results for IndentoPRO.

12 The following values relate to CUT, SCT, and ERS layers:

13 Correlations for the Shore Durometer ranged from 0.53 to 0.92 (0.92 for detecting artificial
14 stiffness changes in CUT, 0.77 for detecting changes in SCT, 0.53 for detecting changes in ERS).
15 Interrater reliability (ICC) was good and ranged from 0.51 (ERS) to 0.69 (CUT).

16 For SCTM, correlations ranged from 0.05 to 0.93. Measurements taken with 10 mm penetration
17 depth showed higher correlations (0.70 for changes in CUT, 0.93 for SCT layer, 0.92 for ERS)
18 than measurements with 5 mm penetration depth (0.55, 0.65, and 0.05 respectively). Excellent
19 interrater-variability values were obtained for ERS (0.93), and SCT (0.8) (both related to 10
20 mm penetration depth).

21 MyotonPRO stiffness (N/m) showed the highest correlations throughout all devices, amounting
22 to 0.94 for changes in CUT, 0.98 for SCT and 0.91 for ERS. Interrater reliability for MyotonPRO
23 was excellent throughout all MPTM layers (0.98 for CUT, 0.99 for SCT, 0.94 for ERS).

24 Correlations for IndentoPRO were also large. Highest correlations were found for
25 measurements with a penetration depth of 10 mm (0.90 for stiffness changes in CUT, 0.98 for
26 SCT, 0.97 for ERS). Values for 2 mm penetration depth amounted to 0.88 (cutis), 0.97 (SCT),
27 0.96 (ERS). Values for 5 mm penetration depth were 0.71 (CUT), 0.97 (SCT), 0.96 (ERS).
28 Correlations for 8 mm penetration depth were calculated at 0.87 (CUT), 0.98 (SCT), and 0.92
29 (ERS). Interrater reliability was excellent for all penetration depths except CUT at 5 mm
30 penetration depth (ICC = 0.51) and SCT at 10 mm penetration depth (ICC = 0.71).

31 Ultrasound with attached force gauge showed large correlations for SCT (0.80 – 0.95, for
32 varying pressure levels), and ERS (0.87-0.96). Interrater reliability was excellent for ERS (all
33 applied pressure parameters) and SCT (at 15 kPasc). Interrater reliability for SCT was good for
34 5 kPasc and 10 kPasc pressures.

35 The detailed results are presented in Table 1.

36 **4 Discussion**

37 To our knowledge, this is the first study examining the reliability of the Shore Durometer,
38 SCTM, IndentoPRO, MyotonPRO, and ultrasound with force transducer on a MPTM mimicking

1 different tissue layers of the human low-back region. The Shore Durometer, SCTM, IndentoPRO
2 and MyotonPRO reliably detected stiffness changes in three of the four MPTM layers. With the
3 ultrasound method, only stiffness changes in layers thicker than 3 mm (i.e., SCT and ERS) could
4 be measured reliably. No method could detect stiffness changes in the thin (1 mm) layer
5 simulating the FPR.

6 The indentation and myotonometry devices included in this study are easy-to-use, with analog
7 or digital displays allowing for an immediate reading of the stiffness-related measurement
8 results. In addition, they are comparatively low in price^{14,16,39}. As none of the tools was able to
9 detect stiffness alterations in the very thin fascia profunda layer, we assume that a certain
10 thickness greater than 1 mm of a layer must be present for the devices, particularly for
11 indentation and myotonometry technologies, to detect changes. While the STCM and IndentoPRO
12 can specifically be set to different indentation depths, those tools alone cannot provide a final
13 information about which tissue layers may present with stiffness alterations. To draw this
14 conclusion, the specific thickness of each layer must be known. Compared to indentation and
15 myotonometry technologies, ultrasound imaging allows for the distinction of different tissue layers,
16 particularly regarding tissue thickness³⁹. Stiffness, however, can only be determined by ultrasound
17 imaging by means of a force–deformation relationship. To quantify this ratio, the forces applied with
18 the ultrasound transducer must be measured. The ultrasound set-up used in this study included a force
19 gauge that was attached to a transducer by a firm, tight Velcro fastener. As this method could be
20 sensitive to the alignment of the transducer and the force gauge, the used mounting might have
21 impacted measurements as well as the resulting limits in measurement range observed in this study.
22 Future studies should therefore use a firmer fixture when applying the same measurement set-up.
23 Alternative, more cost-intensive technologies allowing for the evaluation of thickness as well as
24 stiffness parameters comprise ultrasound elastography^{40,41} and magnetic resonance elastography^{42,43}.

25 Previous studies have indicated that the biomechanical properties of layered tissue structures
26 make it difficult to reliably determine tissue hardness. As one exemplary assessment
27 technology, earlier work has used Shore Durometers to measure tissue stiffness in distinct
28 tissue layers of the body, particularly so regarding the skin layer^{26,33,44–48}. Recent research
29 suggests that shore hardness, as measured by the Shore Durometer in the present study, is
30 more representative of bulk tissue (i.e., skin plus underlying subcutaneous tissue) mechanics
31 than it is of skin biomechanics alone. Stiffness may be influenced by the thickness of the
32 individual tissue layers as well as by the size of the material probe. As a consequence, the
33 thickness and size of individual tissue probes need to be known to draw conclusions about the
34 stiffness values of the individual tissue layers^{49,50}. While this prerequisite was met by the
35 structure of the MPTM (individual tissue layers of homogenous materials with known
36 thickness and stiffness properties), this might prove difficult in clinical practice. Ideally,
37 thickness measurements with technologies such as ultrasound should be performed to secure
38 these tissue properties. Alternatively, recent technologies such as ultrasound elastography or
39 magnetic resonance elastography⁴² may serve as suitable methods to meet those requirements
40 and to simultaneously determine soft tissue stiffness for all soft tissue layers including the
41 fascia profunda^{14,19,51,52}. While our reasoning relates to the thoracolumbar region, the findings
42 presented here are transferable to other anatomical areas that have similar layered structures
43 as the MPTM as well.

44 When relating our findings to the clinical practice, several considerations must be made. To
45 select therapeutic interventions for low back patients, knowledge of the morphometry (e.g.
46 thickness) and biomechanical characteristics (e.g. stiffness) of the thoracolumbar soft tissues in

1 a healthy state as well as in the presence of low back pathology can serve as valuable decision
2 criterion. In clinical practice, thickness of different soft tissue layers is primarily determined with
3 ultrasound imaging⁵³. With regards to stiffness assessment, manual examination has long been
4 part of the clinical decision making. However, the validity and reliability of palpatory assessment
5 have been described as poor⁴⁹⁻⁵². Stiffness assessment tools can be used by the clinical
6 practitioner to document baseline measures and to track improvements over time and with
7 interventions. The practitioner is posed with the challenge of finding evaluation methods able to
8 discern stiffness changes across the different soft tissue layers as well as across the spectrum of
9 different clinical presentations and populations. Our results support practitioners to choose
10 appropriate measurement tools for different measurements depths.

11 In clinical practice, these findings should be linked with knowledge about morphological and
12 biomechanical changes of the respective tissue layers in vivo in low back pain conditions.
13 Various studies have examined these parameters: The cutis layer consists of the epidermis and
14 dermis, with the latter providing most of the mechanical strength of this layer⁵⁸. Changes in
15 cutis thickness (measured by ultrasound) and hardness (assessed with Shore durometer) have
16 been reported in relation to different static spinal postures⁴⁵. Skin in the trunk dorsum was
17 reported to become thicker (~17%) and softer (~ 39 %) during spinal extension and to
18 become thinner (~ 19 %) and harder (~ 106%) during spinal flexion compared to a neutral
19 prone position. Such changes are of note when it comes to the postural positioning of the
20 patient during clinical evaluation. Furthermore these findings are of clinical significance as
21 mechanoreceptors may respond differently due to their altered positioning and spacing, which
22 could contribute to the decreased tactile acuity reported in chronic low back patients^{59,60}.

23 The subcutaneous connective tissue (also termed hypodermis) consists of loose connective
24 tissue and has been described to have mucous-like properties⁶¹. For the subcutaneous
25 connective tissue thickness, an ultrasound study by Langevin and colleagues⁴ showed no
26 significant differences between low back pain patients and asymptomatic controls. However, a
27 recent retrospective study reviewing magnetic resonance images of low back patients revealed
28 that the subcutaneous fat tissue thickness at the L1-L2 level proved to be superior to body
29 mass index in predicting low back pain. The authors determined cutoff values to predict low
30 back pain and spine degeneration for females (subcutaneous fat thickness > 8.45 mm) and
31 males (> 9.4 mm)⁶². Furthermore, diet – particularly dietary salt intake – may influence lumbar
32 subcutaneous edema, which could in turn influence non-specific low back pain⁶³. Clinical
33 practitioners should factor in such changes in subcutaneous tissue thickness and composition
34 when examining thoracolumbar soft tissue structures.

35 For the fascia profunda layer, an ultrasound study found that the thoracolumbar fascia in
36 people with chronic low back pain presented with 25% greater thickness compared to matched
37 controls after adjusting for Body Mass Index⁴. Another biomechanical property of note for the
38 clinical practice relates to the mobility between fascial tissue layers. Ultrasound investigations
39 using cross-correlation analysis showed that the thoracolumbar shear strain was about 20%
40 lower³ and deformability 28% smaller in patients with chronic low back pain during passive
41 trunk flexion compared to controls³. While these findings may support the clinical practitioner
42 in their evaluation, the contribution of the thoracolumbar fascia to low back pain remains less
43 studied than their muscular counterparts⁵³ and should be further examined in future
44 investigations.

1 Regarding the role of the lumbar muscle layer in low back pain, the multifidus muscle has been
2 extensively investigated⁵³. Differences in cross-sectional area (males present with larger cross-
3 sectional area than females), and asymmetry between sides (muscle atrophy has been
4 described ipsilateral to the reported side of unilateral pain) have been reported⁶⁴.
5 Furthermore, fat infiltration of the multifidus muscle is common in adult low back patients, and
6 especially among females. Interestingly, this finding seemed to be independent of overall body
7 fat estimated through body mass index ⁶⁰. This local change in tissue composition could alter
8 biomechanical properties and consequently stiffness measurements and may therefore inform
9 the practitioner's assessment of the low back area. While these findings may inform the
10 practitioner's evaluation of the thoracolumbar region, standardized protocols and a broad
11 range of reference values for thickness and stiffness of the different tissue layers, particularly
12 as they relate to low back pain, are lacking. Reference databases for each of the soft tissue layer
13 properties with regards to factors such as age, gender, body composition, ethnicity, and life-
14 style differences are needed. In addition, it remains unclear how the relationship between
15 different tissue layers changes in response to therapeutic intervention.

16 Even though our findings support the reliability and easy usability of the examined devices,
17 several limitations of the present study need to be addressed. Previous research has
18 recommended to use material phantoms to assess reliability of stiffness measurement devices
19 ¹⁶. Our gel pad model proved to be appropriate for compression stiffness measurements,
20 characterized by a force applied perpendicular to the material. However, the buildup of the
21 model did not allow for the consideration of shear strain, which would include force exerted
22 sideways on the medium. In diagnostic measurements as well as in therapeutic applications,
23 shear mobility between tissue layers may play an essential role when it comes to low-back
24 health^{35,66}. Accordingly, further development of the MPTM, allowing for shear mobility to be
25 considered, would be desirable to produce valuable reliability and validity data for researchers
26 and practitioners⁶⁷.

27 For each MPTM layer, ten gel pads with varying stiffness parameters were manufactured. The
28 stiffness alterations for those ten gel pads were determined individually for each layer.
29 Accordingly, the absolute as well as relative stiffness changes for each layer set were not
30 identical. While the ecological validity of the MPTM benefited from this approach, creating a
31 MPTM with the same gradations for each layer would have increased the comparability of all
32 measurements across the different tissue layers.

33 Furthermore, the thickness and stiffness values for the MPTM were determined from a
34 literature search. To our knowledge, no current data map the various soft tissue layers of the
35 thoracolumbar region by different ethnicities, age groups, or sexes. Therefore, none of these
36 subgroups could be taken into account when we designed the MPTM. In reality, the layered
37 structure of the low back may differ significantly for these subgroups. For instance, body
38 composition has been reported to vary between different ethnicities⁶⁸, and race-related errors
39 in models of body composition assessment have been noted⁶⁹. Such differences and assumption
40 errors may result in varying biomechanical properties of the different tissue layers, as can
41 easily be imagined for the subcutaneous connective tissue. Neighboring fields such as nutrition
42 and cardiology are already considering differences in body compositions for their respective
43 scopes^{70,71}. Future research should be dedicated to establishing tissue layer properties for
44 different subgroups, as such data may positively increase the validity of measurement devices
45 and phantom models alike. Future work should furthermore refine existing measurement

- 1 protocols¹⁵ for the examined stiffness assessment tools with defined measurement locations
- 2 and reference values for different body regions in vivo.

References

1. Wu, A. *et al.* Global low back pain prevalence and years lived with disability from 1990 to 2017: estimates from the Global Burden of Disease Study 2017. *Ann. Transl. Med.* **8**, 299 (2020).
2. Langevin, H. M. & Sherman, K. J. Pathophysiological model for chronic low back pain integrating connective tissue and nervous system mechanisms. *Med. Hypotheses* **68**, 74–80 (2007).
3. Langevin, H. M. *et al.* Reduced thoracolumbar fascia shear strain in human chronic low back pain. *BMC Musculoskelet. Disord.* **12**, 203 (2011).
4. Langevin, H. M. *et al.* Ultrasound evidence of altered lumbar connective tissue structure in human subjects with chronic low back pain. *BMC Musculoskelet. Disord.* **10**, 151 (2009).
5. Willard, F. H., Vleeming, A., Schuenke, M. D., Danneels, L. & Schleip, R. The thoracolumbar fascia: anatomy, function and clinical considerations. *J. Anat.* **221**, 507–536 (2012).
6. Brandl, A., Egner, C. & Schleip, R. Immediate Effects of Myofascial Release on the Thoracolumbar Fascia and Osteopathic Treatment for Acute Low Back Pain on Spine Shape Parameters: A Randomized, Placebo-Controlled Trial. *Life (Basel, Switzerland)* **11**, (2021).
7. Holzapfel, G. Biomechanics of Soft Tissue. in *Handbook of Materials Behavior models* (ed. Lematre, J.) 1049–1063 (Academic Press, 2001).
8. Langevin, H. M. *et al.* Connecting (T)issues: How Research in Fascia Biology Can Impact Integrative Oncology. *Cancer Res.* **76**, 6159–6162 (2016).
9. Alvarez-Diaz, P. *et al.* Effects of anterior cruciate ligament injury on neuromuscular tensiomyographic characteristics of the lower extremity in competitive male soccer players. *Knee Surgery, Sport. Traumatol. Arthrosc.* **24**, 2264–2270 (2016).
10. Sakai, F., Ebihara, S., Akiyama, M. & Horikawa, M. Pericranial muscle hardness in tension-type headache. A non-invasive measurement method and its clinical application. *Brain* **118 (Pt 2)**, 523–531 (1995).
11. Kuo, W.-H., Jian, D.-W., Wang, T.-G. & Wang, Y.-C. Neck muscle stiffness quantified by sonoelastography is correlated with body mass index and chronic neck pain symptoms. *Ultrasound Med. Biol.* **39**, 1356–1361 (2013).
12. Tafazzoli, F. & Lamontagne, M. Mechanical behaviour of hamstring muscles in low-back pain patients and control subjects. *Clin. Biomech. (Bristol, Avon)* **11**, 16–24 (1996).
13. Li, Y., Yu, J., Zhang, J., Zhang, Z. & Wang, X. Quantifying the stiffness of lumbar erector spinae during different positions among participants with chronic low back pain. *PLoS One* **17**, e0270286 (2022).

14. Zügel, M. *et al.* Fascial tissue research in sports medicine: from molecules to tissue adaptation, injury and diagnostics: consensus statement. *Br. J. Sports Med.* **52**, 1497 (2018).
15. Muckelt, P. E. *et al.* Protocol and reference values for minimal detectable change of MyotonPRO and ultrasound imaging measurements of muscle and subcutaneous tissue. *Sci. Rep.* **12**, 13654 (2022).
16. Wilke, J., Vogt, L., Pfarr, T. & Banzer, W. Reliability and validity of a semi-electronic tissue compliance meter to assess muscle stiffness. *J. Back Musculoskelet. Rehabil.* **31**, 991–997 (2018).
17. Oflaz, H. & Baran, O. A new medical device to measure a stiffness of soft materials. *Acta Bioeng. Biomech.* **16**, 125–131 (2014).
18. Sohirad, S., Wilson, D., Waugh, C., Finnermore, E. & Scott, A. Feasibility of using a hand-held device to characterize tendon tissue biomechanics. *PLoS One* **12**, e0184463 (2017).
19. Avila Gonzalez, C. A. *et al.* Frontiers in fascia research. *J. Bodyw. Mov. Ther.* **22**, 873–880 (2018).
20. Moreau, B. *et al.* Non-invasive assessment of human multifidus muscle stiffness using ultrasound shear wave elastography: A feasibility study. *Proc. Inst. Mech. Eng. Part H, J. Eng. Med.* **230**, 809–814 (2016).
21. Nair, K. *et al.* Stiffness of resting lumbar myofascia in healthy young subjects quantified using a handheld myotonometer and concurrently with surface electromyography monitoring. *J. Bodyw. Mov. Ther.* **20**, 388–396 (2016).
22. Lohr, C., Braumann, K.-M., Reer, R., Schroeder, J. & Schmidt, T. Reliability of tensiomyography and myotonometry in detecting mechanical and contractile characteristics of the lumbar erector spinae in healthy volunteers. *Eur. J. Appl. Physiol.* **118**, 1349–1359 (2018).
23. Spitzer, V., Ackerman, M. J., Scherzinger, A. L. & Whitlock, D. The visible human male: A technical report. *J. Am. Med. Inform. Assoc.* **3**, 118–130 (1996).
24. Chang, Y.-J., Coddington, P. D. & Hutchens, K. Viewing the visible human using Java and the web. (1998).
25. Mix, A. & Giacomini, A. Standardized Polymer Durometry. *J. Test. Eval.* **39**, 696–705 (2011).
26. Falanga, V. & Bucalo, B. Use of a durometer to assess skin hardness. *J. Am. Acad. Dermatol.* **29**, 47–51 (1993).
27. Fischer, A. A. Tissue compliance meter for objective, quantitative documentation of soft tissue consistency and pathology. *Arch. Phys. Med. Rehabil.* **68**, 122–125 (1987).
28. Kett, A. R. & Sichtung, F. Sedentary behaviour at work increases muscle stiffness of the

- back: Why roller massage has potential as an active break intervention. *Appl. Ergon.* **82**, 102947 (2020).
29. Koch, V. & Wilke, J. Reliability of a New Indentometer Device for Measuring Myofascial Tissue Stiffness. *J. Clin. Med.* **11**, (2022).
 30. Kett, A. R., Milani, T. L. & Sichtung, F. Sitting for Too Long, Moving Too Little: Regular Muscle Contractions Can Reduce Muscle Stiffness During Prolonged Periods of Chair-Sitting. *Front. Sport. Act. living* **3**, 760533 (2021).
 31. Chuang, L.-L., Wu, C.-Y., Lin, K.-C. & Lur, S.-Y. Quantitative mechanical properties of the relaxed biceps and triceps brachii muscles in patients with subacute stroke: a reliability study of the myoton-3 myometer. *Stroke Res. Treat.* **2012**, 617694 (2012).
 32. Jafari, M., Bahrpeyma, F., Mokhtari-Dizaji, M. & Nasiri, A. Novel method to measure active myofascial trigger point stiffness using ultrasound imaging. *J. Bodyw. Mov. Ther.* **22**, 374–378 (2018).
 33. Periyasamy, R., Anand, S. & Ammini, A. C. Investigation of Shore meter in assessing foot sole hardness in patients with diabetes mellitus - a pilot study. *Int. J. Diabetes Dev. Ctries.* **32**, 169–175 (2012).
 34. Jędrzejewski, G. *et al.* The Rolf Method of Structural Integration on Fascial Tissue Stiffness, Elasticity, and Superficial Blood Perfusion in Healthy Individuals: The Prospective, Interventional Study. *Front. Physiol.* **11**, 1062 (2020).
 35. Cohen, J. *Statistical power analysis for the behavioral sciences.* (Academic Press, 1977).
 36. Fleiss, J. Reliability of Measurement. in *Design and analysis of clinical experiments* 1–32 (John Wiley & Sons, Ltd, 2011).
 37. Furlan, L. & Sterr, A. The Applicability of Standard Error of Measurement and Minimal Detectable Change to Motor Learning Research-A Behavioral Study. *Front. Hum. Neurosci.* **12**, 95 (2018).
 38. Schmitt, J. S. & Di Fabio, R. P. Reliable change and minimum important difference (MID) proportions facilitated group responsiveness comparisons using individual threshold criteria. *J. Clin. Epidemiol.* **57**, 1008–1018 (2004).
 39. Wilke, J. & Banzer, W. Die nicht invasive Untersuchung faszialer Strukturen – Eine narrative Übersichtsarbeit TT - Non-invasive Screening of Fascial Tissues – A Narrative Review. *Phys. Medizin, Rehabil. Kurortmedizin* **24**, 117–124 (2014).
 40. Taljanovic, M. S. *et al.* Shear-wave elastography: Basic physics and musculoskeletal applications. *Radiographics* **37**, 855–870 (2017).
 41. Sigrist, R. M. S., Liao, J., Kaffas, A. E., Chammass, M. C. & Willmann, J. K. Ultrasound elastography: Review of techniques and clinical applications. *Theranostics* **7**, 1303–1329 (2017).

42. Chakouch, M. K., Pouletaut, P., Charleux, F. & Bensamoun, S. F. Viscoelastic shear properties of in vivo thigh muscles measured by MR elastography. *J. Magn. Reson. Imaging* **43**, 423–1433 (2016).
43. Chakouch, M. K., Charleux, F. & Bensamoun, S. F. New magnetic resonance elastography protocols to characterise deep back and thigh muscles. *Comput. Methods Biomech. Biomed. Engin.* **17**(Suppl 1), 32–33 (2014).
44. Strzalkowski, N. D. J., Triano, J. J., Lam, C. K., Templeton, C. A. & Bent, L. R. Thresholds of skin sensitivity are partially influenced by mechanical properties of the skin on the foot sole. *Physiol. Rep.* **3**, (2015).
45. Beaudette, S. M., Zwambag, D. P., Bent, L. R. & Brown, S. H. M. Spine postural change elicits localized skin structural deformation of the trunk dorsum in vivo. *J. Mech. Behav. Biomed. Mater.* **67**, 31–39 (2017).
46. Holowka, N. B. *et al.* Foot callus thickness does not trade off protection for tactile sensitivity during walking. *Nature* **571**, 261–264 (2019).
47. Helili, M. *et al.* An Investigation of Regional Plantar Soft Tissue Hardness and Its Potential Correlation with Plantar Pressure Distribution in Healthy Adults. *Appl. bionics Biomech.* **2021**, 5566036 (2021).
48. Duan, Y. *et al.* Relationship Between Plantar Tissue Hardness and Plantar Pressure Distributions in People With Diabetic Peripheral Neuropathy. *Front. Bioeng. Biotechnol.* **10**, 836018 (2022).
49. Chatzistergos, P. E., Allan, D., Chockalingam, N. & Naemi, R. Shore hardness is a more representative measurement of bulk tissue biomechanics than of skin biomechanics. *Med. Eng. Phys.* **105**, 103816 (2022).
50. Spears, I. R. & Miller-Young, J. E. The effect of heel-pad thickness and loading protocol on measured heel-pad stiffness and a standardized protocol for inter-subject comparability. *Clin. Biomech. (Bristol, Avon)* **21**, 204–212 (2006).
51. Feng, Y. N., Li, Y. P., Liu, C. L. & Zhang, Z. J. Assessing the elastic properties of skeletal muscle and tendon using shearwave ultrasound elastography and MyotonPRO. *Sci. Rep.* **8**, 17064 (2018).
52. Wilke, J., Schwiete, C. & Behringer, M. Effects of Maximal Eccentric Exercise on Deep Fascia Stiffness of the Knee Flexors: A Pilot Study using Shear-Wave Elastography. *J. Sport. Sci. Med.* **21**, 419–425 (2022).
53. Cheung, W. K., Cheung, J. P. Y. & Lee, W.-N. Role of Ultrasound in Low Back Pain: A Review. *Ultrasound Med. Biol.* **46**, 1344–1358 (2020).
54. Kawchuk, G. N. *et al.* Clinicians' Ability to Detect a Palpable Difference in Spinal Stiffness Compared With a Mechanical Device. *J. Manipulative Physiol. Ther.* **42**, 89–95 (2019).
55. Maher, C. G., Latimer, J. & Adams, R. An investigation of the reliability and validity of

- posteroanterior spinal stiffness judgments made using a reference-based protocol. *Phys. Ther.* **78**, 829–837 (1998).
56. Seffinger, M. A. *et al.* Reliability of spinal palpation for diagnosis of back and neck pain: a systematic review of the literature. *Spine (Phila. Pa. 1976)*. **29**, E413-25 (2004).
 57. Stolz, M., von Piekartz, H., Hall, T., Schindler, A. & Ballenberger, N. Evidence and recommendations for the use of segmental motion testing for patients with LBP - A systematic review. *Musculoskelet. Sci. Pract.* **45**, 102076 (2020).
 58. Wong, R., Geyer, S., Weninger, W., Guimberteau, J.-C. & Wong, J. K. The dynamic anatomy and patterning of skin. *Exp. Dermatol.* **25**, 92–98 (2016).
 59. Moseley, L. G. I can't find it! Distorted body image and tactile dysfunction in patients with chronic back pain. *Pain* **140**, 239–243 (2008).
 60. Catley, M. J., O'Connell, N. E., Berryman, C., Ayhan, F. F. & Moseley, G. L. Is tactile acuity altered in people with chronic pain? a systematic review and meta-analysis. *J. pain* **15**, 985–1000 (2014).
 61. Guimberteau, J. C., Delage, J. P., McGrouther, D. A. & Wong, J. K. F. The microvacuolar system: how connective tissue sliding works. *J. Hand Surg. Eur. Vol.* **35**, 614–622 (2010).
 62. Berikol, G., Ekşi, M. Ş., Aydın, L., Börekci, A. & Özcan-Ekşi, E. E. Subcutaneous fat index: a reliable tool for lumbar spine studies. *Eur. Radiol.* **32**, 6504–6513 (2022).
 63. Brown, R. B. Non-Specific Low Back Pain, Dietary Salt Intake, and Posterior Lumbar Subcutaneous Edema. *Int. J. Environ. Res. Public Health* **19**, (2022).
 64. Hides, J., Gilmore, C., Stanton, W. & Bohlscheid, E. Multifidus size and symmetry among chronic LBP and healthy asymptomatic subjects. *Man. Ther.* **13**, 43–49 (2008).
 65. Kjaer, P., Bendix, T., Sorensen, J. S., Korsholm, L. & Leboeuf-Yde, C. Are MRI-defined fat infiltrations in the multifidus muscles associated with low back pain? *BMC Med.* **5**, 2 (2007).
 66. Krause, F., Wilke, J., Niederer, D., Vogt, L. & Banzer, W. Acute effects of foam rolling on passive stiffness, stretch sensation and fascial sliding: A randomized controlled trial. *Hum. Mov. Sci.* **67**, 102514 (2019).
 67. Wang, Y., Jacobson, D. S. & Urban, M. W. A Non-invasive Method to Estimate the Stress-Strain Curve of Soft Tissue Using Ultrasound Elastography. *Ultrasound Med. Biol.* **48**, 786–807 (2022).
 68. Deurenberg, P., Yap, M. & van Staveren, W. A. Body mass index and percent body fat: a meta analysis among different ethnic groups. *Int. J. Obes. Relat. Metab. Disord. J. Int. Assoc. Study Obes.* **22**, 1164–1171 (1998).
 69. Fedewa, M. V *et al.* Examining Race-Related Error in Two-Compartment Models of Body Composition Assessment: A Systematic Review and Meta-Analysis. *J. Clin. Densitom. Off.*

J. Int. Soc. Clin. Densitom. **24**, 156–168 (2021).

70. Oguntade, A. S. *et al.* Body composition and risk of heart failure: protocol for a systematic review and meta-analysis. *Open Hear.* **8**, (2021).
71. Barone, M. *et al.* Assessment of body composition: Intrinsic methodological limitations and statistical pitfalls. *Nutrition* **102**, 111736 (2022).

Author Contributions

Conceptualization: R.S., W.B., K.B., W.K.; formal analysis: A.B., R.S.; investigation: K.B., R.S., P.W., W.B., S.B.; methodology: K.B., R.S., A.B., W.B., W.K., J.W., S.B.; project administration: K.B., R.S.; resources: K.B., R.S., visualization: A.B., S.B., R.S., K.B., writing – original draft: K.B.; writing – review and editing: K.B., R.S., A.B., J.W., W.B., W.K., S.B., P.W.. All authors have read and agreed to the published version of the manuscript.

Data Availability Statement

The datasets that will be used and/or analyzed during the current study will be available from the corresponding author on reasonable request.

Competing Interests

The authors declare that the research was conducted in the absence of any commercial or financial relationships that could be construed as a potential conflict of interest.

Funding

The authors received no financial support for the research, authorship and/or publication of this article.

Acknowledgments

Not applicable.

Table 1. Results

5 Stiffness assessment tool	Depth/ Pressure Layer		Stiffness assessment tool reliability				Interrater reliability			
	Cor	Linear regression formula	R2	p-value	ICC	95% CI	SEM	MDC		
Shore Durometer	NA	1	0.92***	(-0.0525 + 0.349 * RV)	0.85	< 0.001	0.69	(-0.42-0.93)	0.16	0.45
SCTM	5 mm	1	0.55+	(0.1211 + 0.176 * RV)	0.35	0.096	0.12+	(-0.18-0.59)	0.42	1.15
	10 mm	1	0.70*+	(0.0228 + 0.0758 * RV)	0.48	0.037	0.18+	(-0.31-0.7)	0.10	0.28
MyotonPRO Stiffness	NA	1	0.94***	(0.0061 + 0.0757 * RV)	0.88	< 0.001	0.98***	(0.86-1)	0.01	0.02
IndentoPRO	2 mm	1	0.88**	(-0.063 + 0.1934 * RV)	0.78	0.002	0.78*	(0.05-0.95)	0.09	0.24
	5 mm	1	0.71*	(-0.039 + 0.1867 * RV)	0.50	0.032	0.51	(-0.61-0.88)	0.20	0.56
	8 mm	1	0.87**	(0.0176 + 0.0942 * RV)	0.75	0.0025	0.76*	(-0.11-0.95)	0.04	0.10
	10 mm	1	0.90**	(-0.0222 + 0.0956 * RV)	0.81	< 0.001	0.82*	(0.24-0.96)	0.03	0.09
Ultrasound	5 kPasc	1	NA	NA	NA	NA	NA	NA	NA	NA
	10 kPasc	1	0.20+	(-0.0158 + 0.0715 * RV)	0.01	0.803	0.08	(-0.36-0.57)	0.22	0.61
	15 kPasc	1	0.10+	(0.093 + 0.0753 * RV)	0.01	0.809	0.14+	(-0.17-0.61)	0.23	0.63
Shore Durometer	NA	2	0.77*	(0.1559 + 0.0399 * RV)	0.59	0.016	0.71	(-0.3-0.93)	0.06	0.17
SCTM	5 mm	2	0.65+	(-0.0054 + 0.1872 * RV)	0.46	0.043	0.31+	(-0.99-0.82)	0.27	0.76
	10 mm	2	0.93***	(0.2128 + 0.0453 * RV)	0.86	< 0.001	0.8*	(0.05-0.96)	0.05	0.13
MyotonPRO Stiffness	NA	2	0.98***	(0.0193 + 0.0208 * RV)	0.95	< 0.001	0.99***	(0.94-1)	0.00	0.01
IndentoPRO	2 mm	2	0.97***	(0.0791 + 0.1756 * RV)	0.94	< 0.001	0.82*	(-0.03-0.96)	0.10	0.28
	5 mm	2	0.97***	(0.0785 + 0.16 * RV)	0.94	< 0.001	0.81*	(0.16-0.96)	0.09	0.25
	8 mm	2	0.98***	(0.0887 + 0.1321 * RV)	0.96	< 0.001	0.75*	(0.01-0.94)	0.07	0.20
	10 mm	2	0.98***	(0.0714 + 0.121 * RV)	0.96	< 0.001	0.71	(-0.24-0.93)	0.08	0.22
Ultrasound	5 kPasc	2	0.80**	(0.7334 + 0.8173 * RV)	0.64	0.009	0.44	(-1.63-0.87)	2.31	6.40
	10 kPasc	2	0.89**	(0.6956 + 0.6704 * RV)	0.79	0.001	0.74*	(-0.17-0.94)	0.65	1.80
	15 kPasc	2	0.95***	(0.7275 + 0.7006 * RV)	0.90	< 0.001	0.82*	(0.1-0.96)	0.55	1.54
Shore Durometer	NA	4	0.53	(0.026 + 0.0237 * RV)	0.28	0.144	0.51	(-0.4-0.88)	0.04	0.10
SCTM	5 mm	4	0.05+	(0.0899 + 0.0554 * RV)	0.05	0.562	0.07+	(-0.7-0.69)	0.38	1.04
	10 mm	4	0.92***	(-0.0502 + 0.0971 * RV)	0.85	< 0.001	0.93***	(0.71-0.98)	0.03	0.09
MyotonPRO Stiffness	NA	4	0.91***	(0.0076 + 0.0181 * RV)	0.84	< 0.001	0.94**	(0.61-0.99)	0.01	0.01
IndentoPRO	2 mm	4	0.96***	(-0.0242 + 0.1158 * RV)	0.92	< 0.001	0.96***	(0.82-0.99)	0.02	0.06
	5 mm	4	0.96***	(-0.0361 + 0.0996 * RV)	0.92	< 0.001	0.97**	(0.38-0.99)	0.02	0.06
	8 mm	4	0.92***	(0.0087 + 0.1037 * RV)	0.85	< 0.001	0.96**	(0.67-0.99)	0.02	0.06
	10 mm	4	0.97***	(-0.0052 + 0.1471 * RV)	0.93	< 0.001	0.96***	(0.71-0.99)	0.04	0.10
Ultrasound	5 kPasc	4	0.92***	(-0.2829 + 0.471 * RV)	0.84	< 0.001	0.82*	(0.01-0.96)	0.27	0.75
	10 kPasc	4	0.87**	(-0.198 + 0.5139 * RV)	0.76	0.0022	0.87**	(0.45-0.97)	0.26	0.71
	15 kPasc	4	0.96***	(-0.0585 + 0.5778 * RV)	0.91	< 0.001	0.94***	(0.74-0.99)	0.16	0.45

ICC estimates and their 95% CI were calculated using the R package "irr" version 0.84.1 based on a 2-way random-effects model with absolute agreement. + Not normally distributed data were log 10 transformed for ICC calculations; correlations were accordingly calculated with the Spearman's rank correlation coefficient instead of the Pearson product-moment correlation. Values that show at least a high correlation ($r > 0.8$) are printed in bold type. NA. Data could not be measured. Layer 1: Cutis. Layer 2: Subcutaneous connective tissue. Layer 3: Fascia profunda (data not shown, since none of our assessment methods was able to yield significant stiffness differences between the different layer variants in this 1mm thin layer). Layer 4: Erector spinae muscle. Significant at the level * < 0.05 . ** < 0.01 . *** < 0.001 .

Figure captions

Figure 1. Multi-layered phantom tissue model.

Figure 2. Cross-section of L3 region. Photo: Modified from Visible Human Project of U.S. National Library of Medicine²³, accessed through NPAC/OLDA Visible Human Viewer²⁴ with permission.

Figure 3. CUT cutis. SCT subcutaneous connective tissue. FPR fascia profunda. ERS erector spinae. Blank denotes "no reliable measurement possible". ✓ denotes moderate correlation (> 0.4). ✓✓ denotes strong. correlation (> 0.7). ✓✓✓ denotes very strong correlation (> 0.9). Photos (1st to 5th row): rows 1-3: fasciaresearch.org with permission; myotonpro.com with permission, fasciaresearch.org with permission.

Figure 4. A: Scatter plot of the agreement between the two raters for the MyotonPRO. B: Bland-Altman plot of the mean differences between the raters. The dashed line in the middle represents the mean difference; the lines above and below show the 95 % limits of agreement. The values indicate the relative stiffness changes.

Figure 5: A: Scatter plot of the agreement between the two raters for the IndentoPRO. B: Bland-Altman plot of the mean differences between the raters. Legend: see Figure 4.

Figure 1.

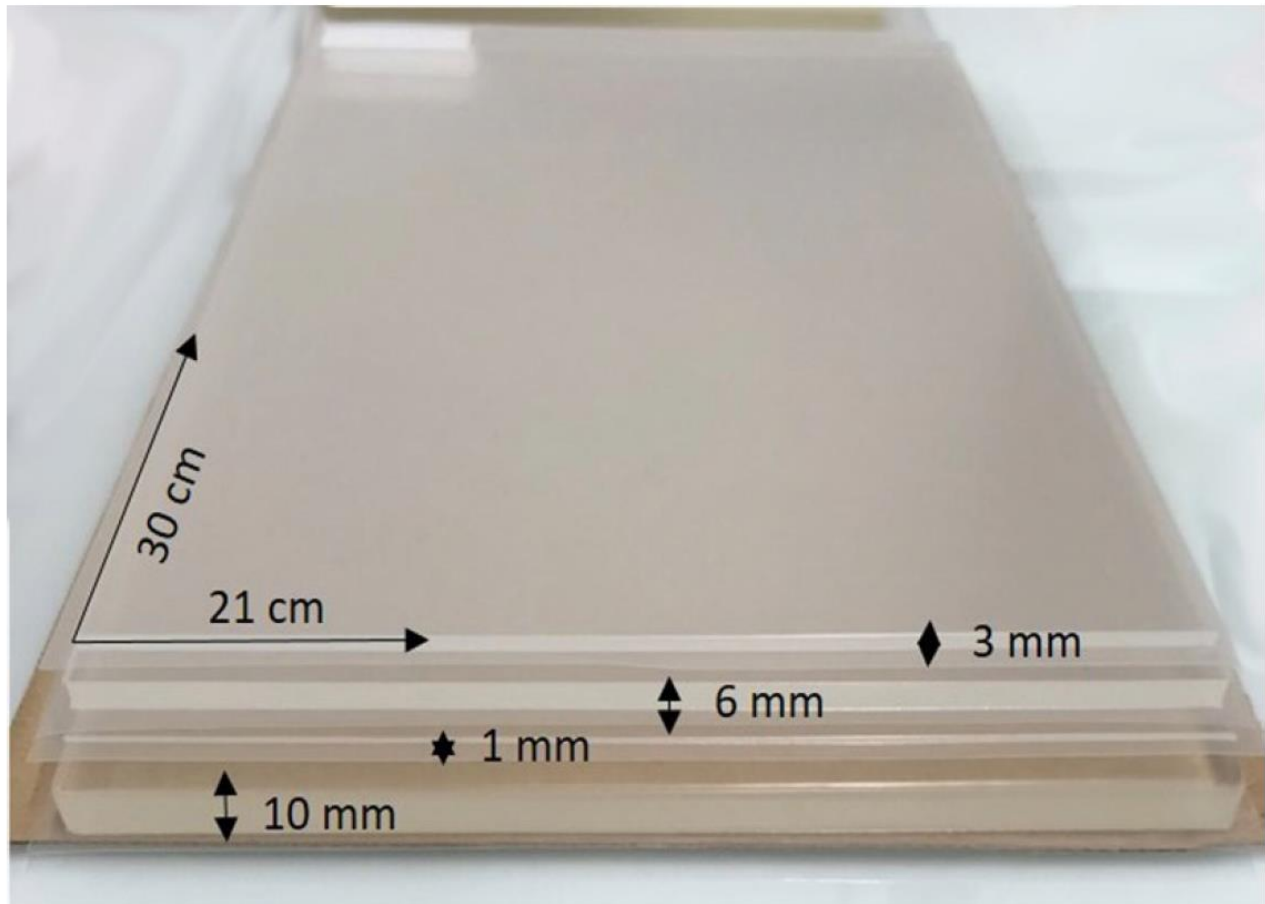


Figure 2.

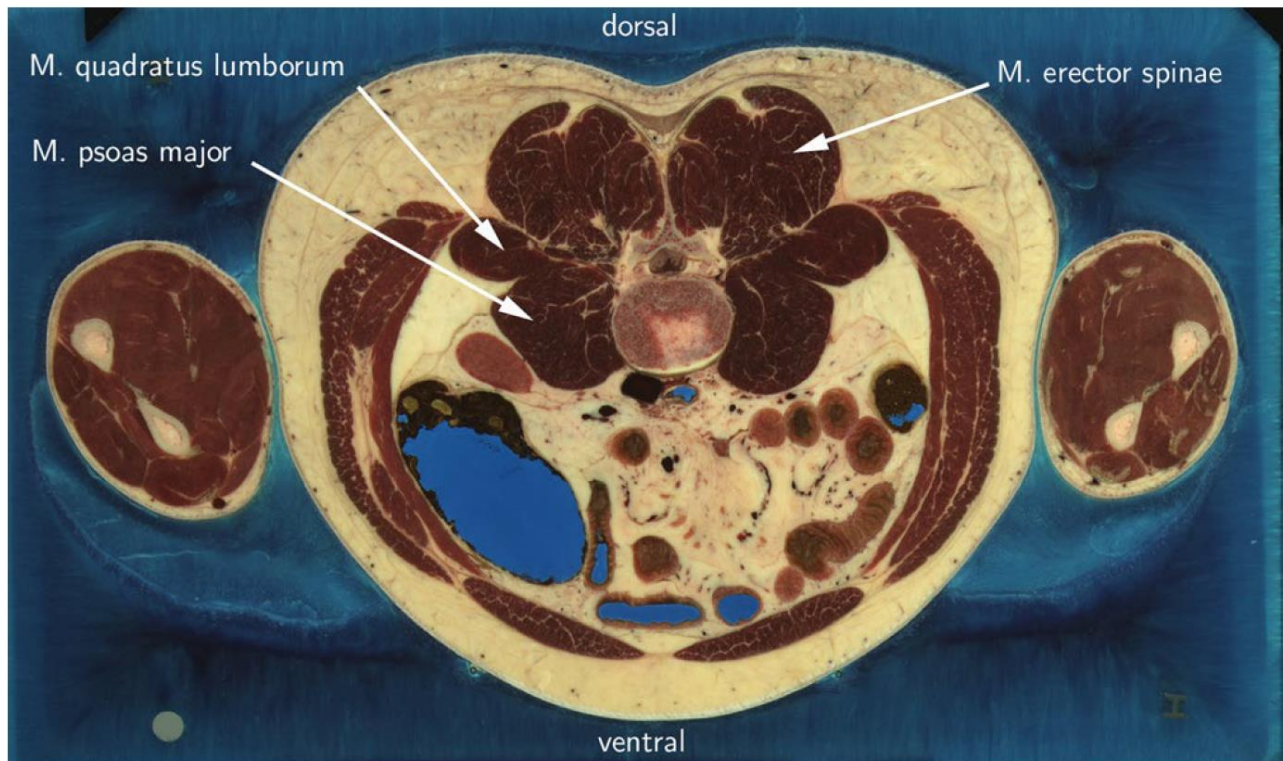


Figure 3.



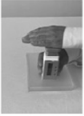


Stiffness measurement tool	Property	Detection of stiffness changes in layers (layer thickness indicated below)				Interrater reliability
		CUT (3mm)	SCT (6mm)	FPR (1mm)	ERS (10mm)	
Shore Durometer		✓✓✓	✓✓			✓✓
STCM		✓	✓✓✓		✓✓✓	✓✓
IndentoPRO		✓✓✓	✓✓✓		✓✓✓	✓✓✓
MyotonPRO		✓✓✓	✓✓✓		✓✓✓	✓✓✓
Ultrasound imaging			✓✓✓		✓✓✓	✓✓

Figure 4.

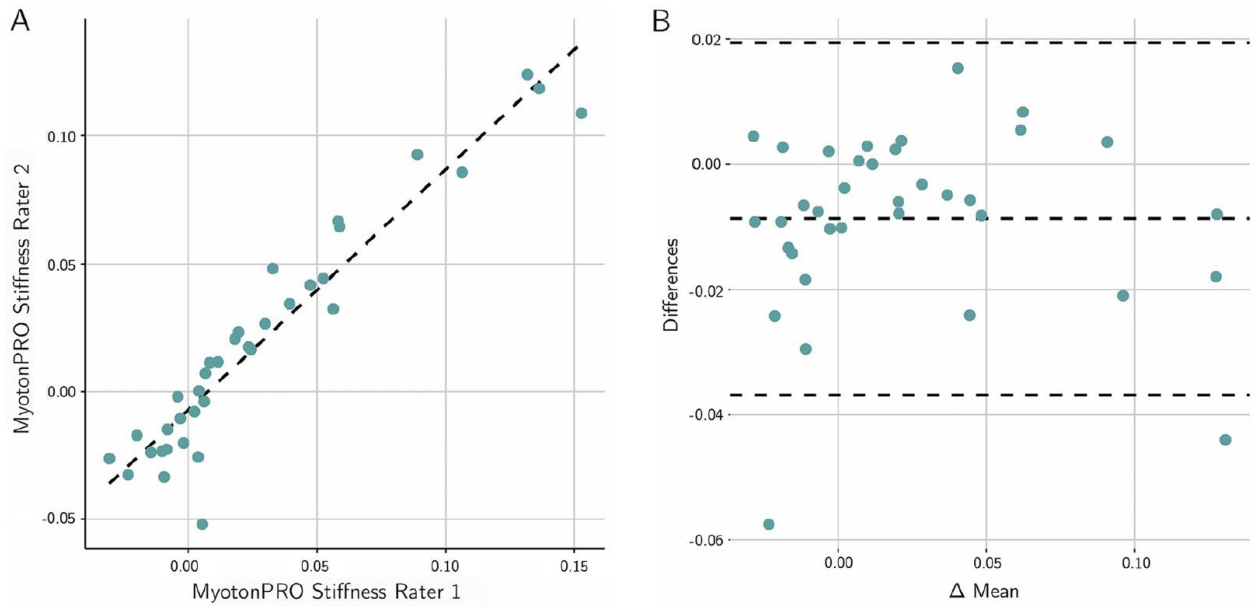


Figure 5.

