



**HAL**  
open science

## Evaluation of two automatic image-processing approaches for oligoclonal band detection: an expert system and a deep learning model

Farah Haddad, Samuel Boudet, Laurent Peyrodie, Nicolas Vandembroucke, Julien Poupart, Patrick Hauteceur, Vincent Chieux, Gérard Forzy

### ► To cite this version:

Farah Haddad, Samuel Boudet, Laurent Peyrodie, Nicolas Vandembroucke, Julien Poupart, et al.. Evaluation of two automatic image-processing approaches for oligoclonal band detection: an expert system and a deep learning model. 38th Congress of the European Committee for Treatment and Research in Multiple Sclerosis –ECTRIMS 2022, Oct 2022, Amsterdam, Netherlands. Multiple Sclerosis Journal, 28 (3S), pp.130-691, 2022, 10.1177/13524585221123687 . hal-03981544

**HAL Id: hal-03981544**

**<https://hal.science/hal-03981544>**

Submitted on 15 May 2024

**HAL** is a multi-disciplinary open access archive for the deposit and dissemination of scientific research documents, whether they are published or not. The documents may come from teaching and research institutions in France or abroad, or from public or private research centers.

L'archive ouverte pluridisciplinaire **HAL**, est destinée au dépôt et à la diffusion de documents scientifiques de niveau recherche, publiés ou non, émanant des établissements d'enseignement et de recherche français ou étrangers, des laboratoires publics ou privés.



# Evaluation of two automatic image processing approaches for oligoclonal band detection: an expert system and a deep learning model

F. HADDAD<sup>1,2</sup>, S. BOUDET<sup>1</sup>, L. PEYRODIE<sup>3</sup>, N. VANDENBROUCKE<sup>2</sup>, J. POUPART<sup>4</sup>, P. HAUTECOEUR<sup>1,4</sup>, V. CHIEUX<sup>5</sup>, G. FORZY<sup>1,5</sup>

1 Institut Catholique de Lille (ICL), Faculté de Médecine, Maïeutique, Sciences de la Santé (FMMS), Lille, France

2 Université du Littoral Côte d'Opale (ULCO), Laboratoire d'Informatique Signal et Image de la Côte d'Opale (LISIC), Calais, France

3 JUNIA-HEI (Hautes Études d'Ingénieur), Lille, France

4 Groupement des Hôpitaux de l'Institut Catholique de Lille (GHICL), Hôpital Saint Vincent de Paul, Département de neurologie, Lille, France

5 Groupement des Hôpitaux de l'Institut Catholique de Lille (GHICL), Hôpital Saint Philibert, Département de biochimie, Lomme, France



## BACKGROUND

Cerebrospinal fluid (CSF) restricted oligoclonal bands (OCB) are the established immunological biomarker for multiple sclerosis (MS) diagnosis

OCBs report persistent intrathecal synthesis of immunoglobulin G (IgG) and are evidence of dissemination in time of neurological damage.

Isoelectric focusing (IEF) and immunoblotting is the gold standard technique to detect OCBs

OCB visual quantification on the resulted IEF migration image is a complex, tedious task subject to misinterpretations and hence has high inter and intra expert variabilities

## AUTOMATIC OCB DETECTION

We have developed Expert-IEF, an image processing tool for automatic analysis of IEF migration images with three major processing steps:

**Lane segmentation:** lane's contours are segmented simultaneously "in ribbon" using an original formulation of open active contours [1]

**OCB straightening:** distorted OCBs during migration are transformed back into ideal horizontal OCBs via an innovative coupling of a hierarchy of image resolutions to a hierarchy of deformations [2]

**OCB detection:** we proposed two approaches:

- OCB-ES:** (expert system) an expert knowledge driven model, that requires a prior step of OCBs' relevant feature extraction. Auto-explicative model with comprehensive rationale and results
- OCB-DL:** (Deep Learning) a massive data driven model that has the advantage of extracting OCBs' relevant features autonomously but is not straightforward explainable

## AIM

**Benchmarking the performance of the two approaches and four experts** to detect OCBs, the references being:

- a visual on-membrane expert consensus analysis
- the final classification of the disease

## DATA GATHERING

**982 CSF lanes** (80% training/validation ; 20% test) with :

- Visual on-membrane expert consensus analysis
- Final classification of the disease (at the time of the inclusion) : MS (P, RR), versus control (non-inflammatory central nervous system related disease)

**Inclusion criteria:** From French cohorts (POLAR, reference NCT02043964) and (Expert-IEF, reference RNIPH-2021-37) Jan 2014 to Dec 2021

**Exclusion criteria:** (i) mirror pattern (ii) with non-analyzable IgG migration region (highly artifactual or deformed)

## EVALUATION METHOD

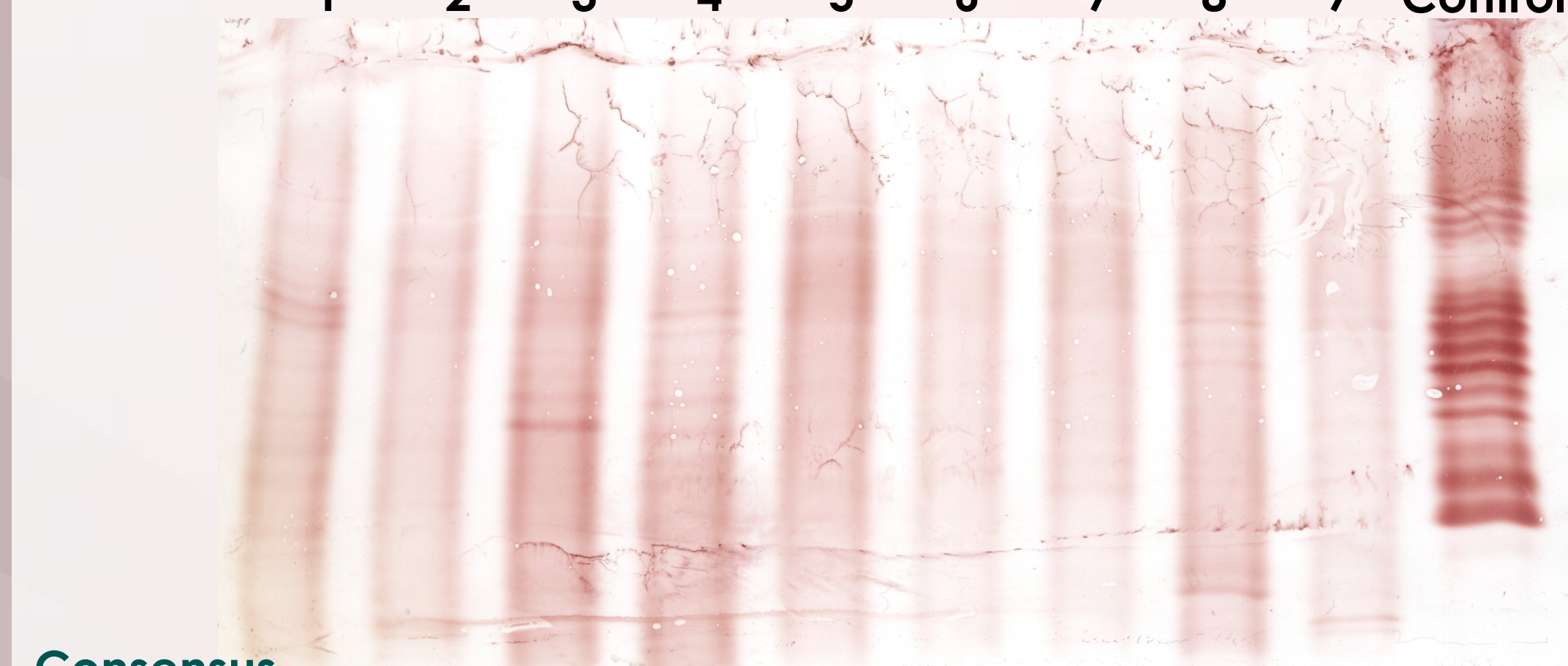
On test dataset (**149 CSF lanes**), we evaluated (i) the two developed approaches (ii) four experts blinded to each other's

**Evaluation criteria:**

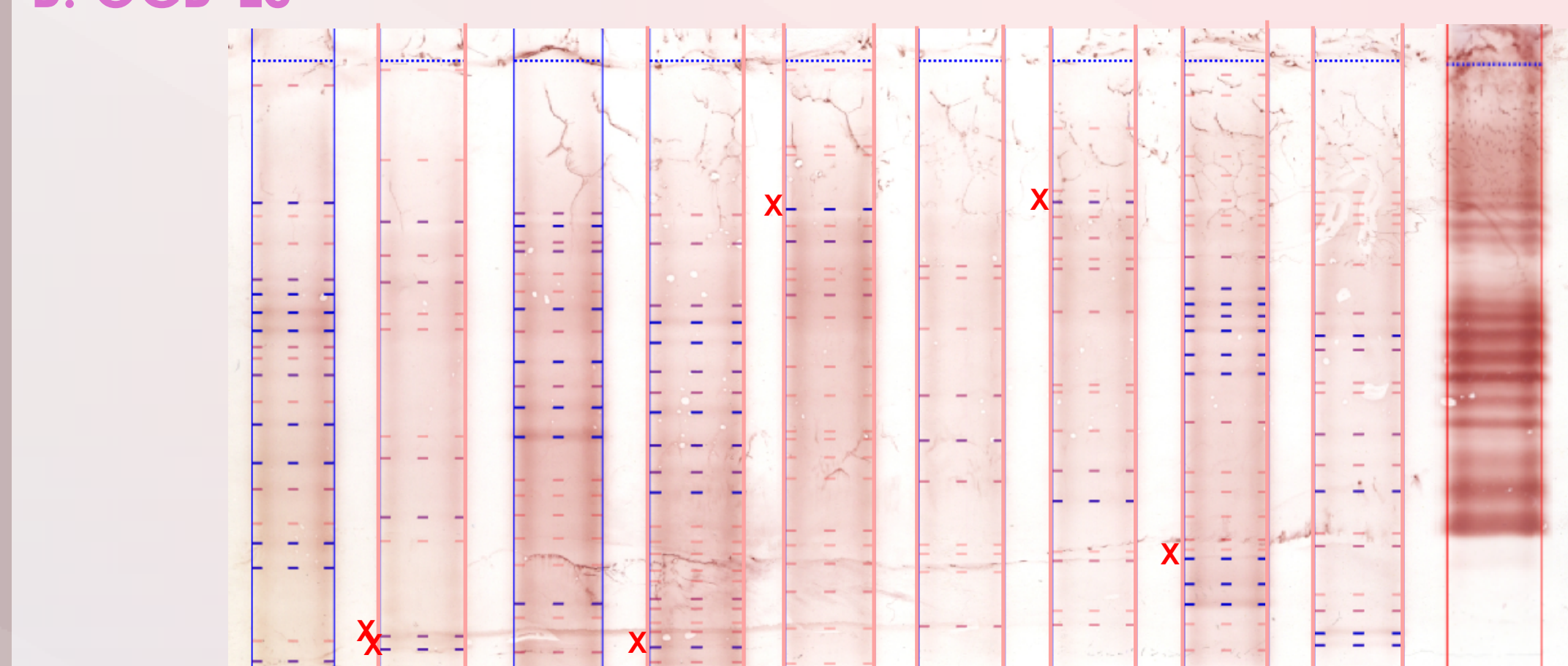
- To reproduce a visual on-membrane expert consensus analysis considered to be the ground truth ( $\geq 3$  OCBs  $\Rightarrow$  oligoclonal lane (o) else non-oligoclonal (n))
- To predict the clinical classification (MS vs control; CIS/RIS subjects excluded)

## RESULTS

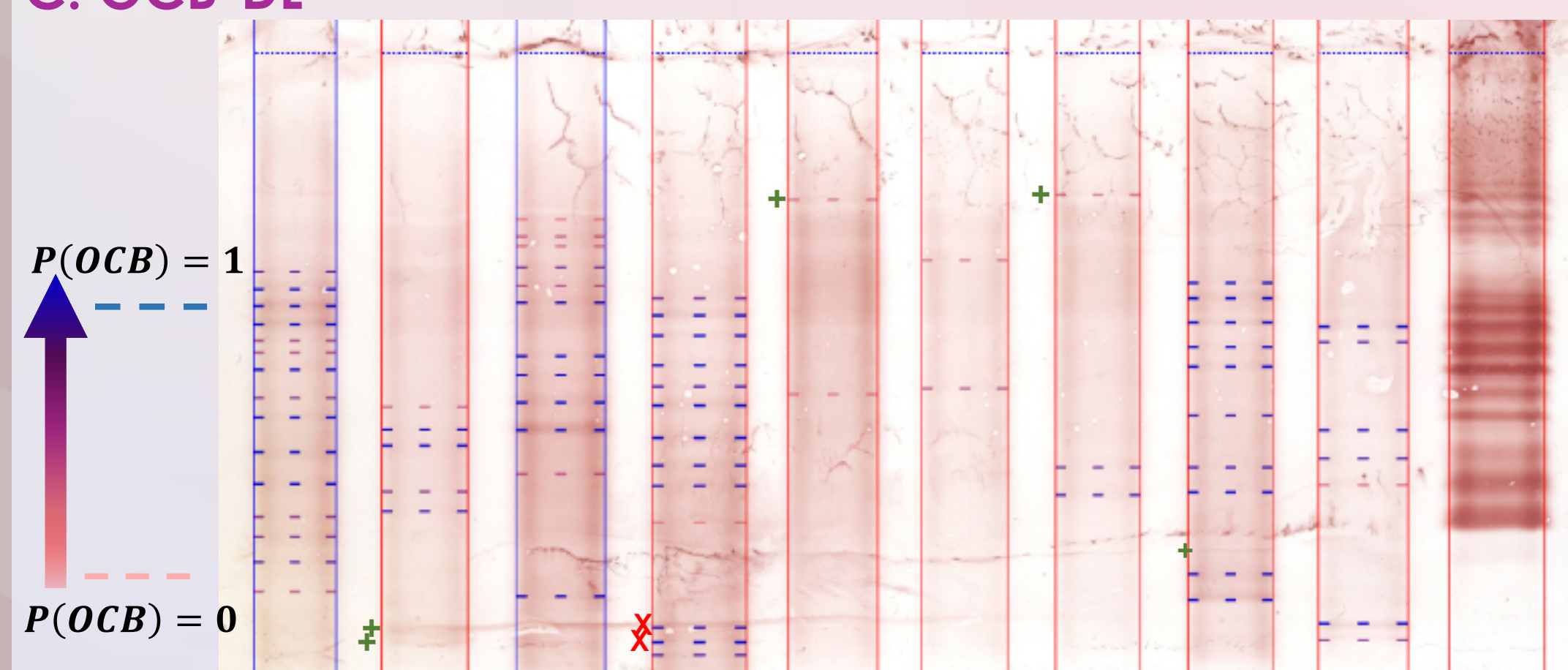
A : raw IEF Lane No 1 2 3 4 5 6 7 8 9 Control



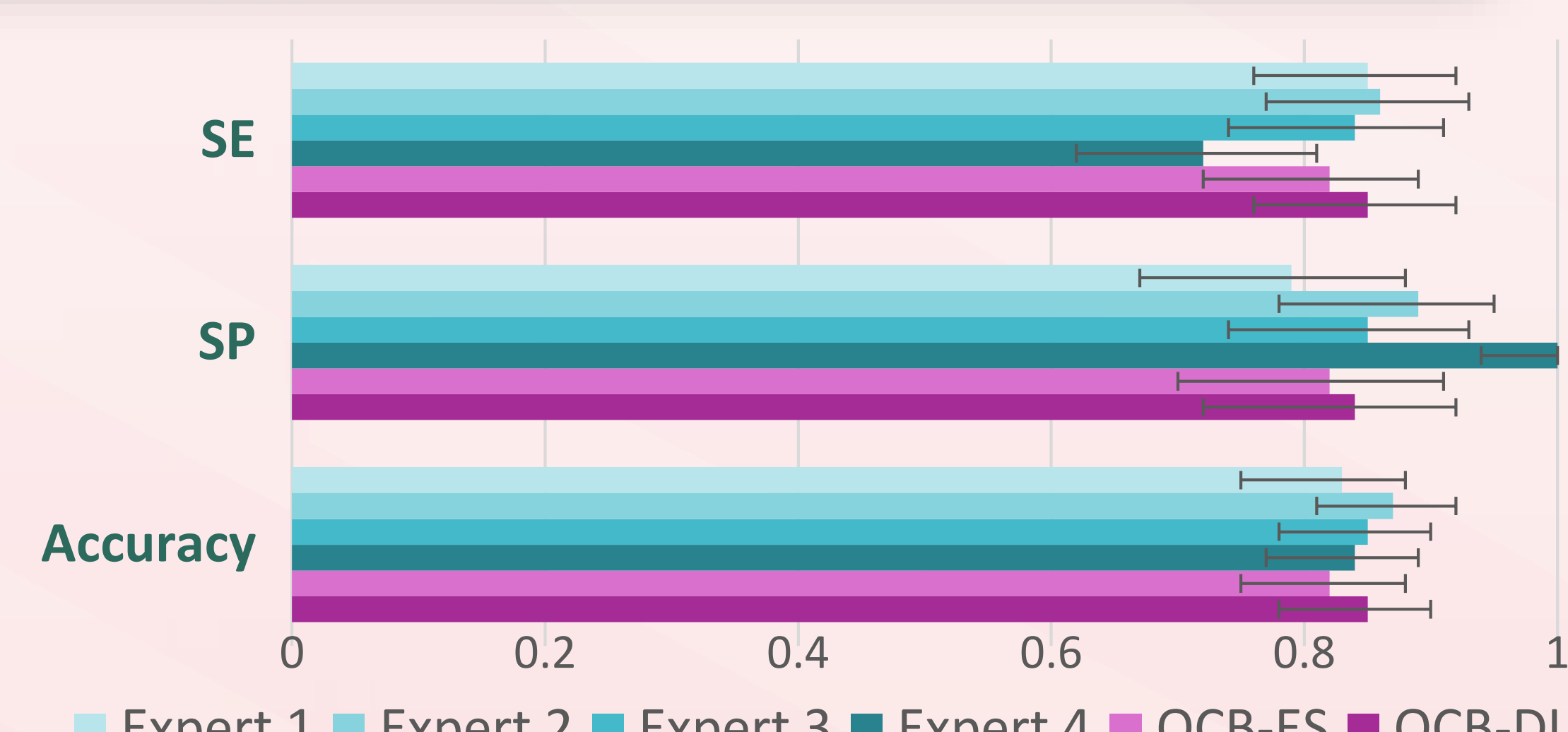
B: OCB-ES



C: OCB-DL



**Fig 1:** Results of the two approaches on a CSF IEF image  
Acquired using SPIFE 2000 (Helena Laboratories, Texas USA) and IgG IEF kit (Helena Biosciences Europe, Gateshead, UK)



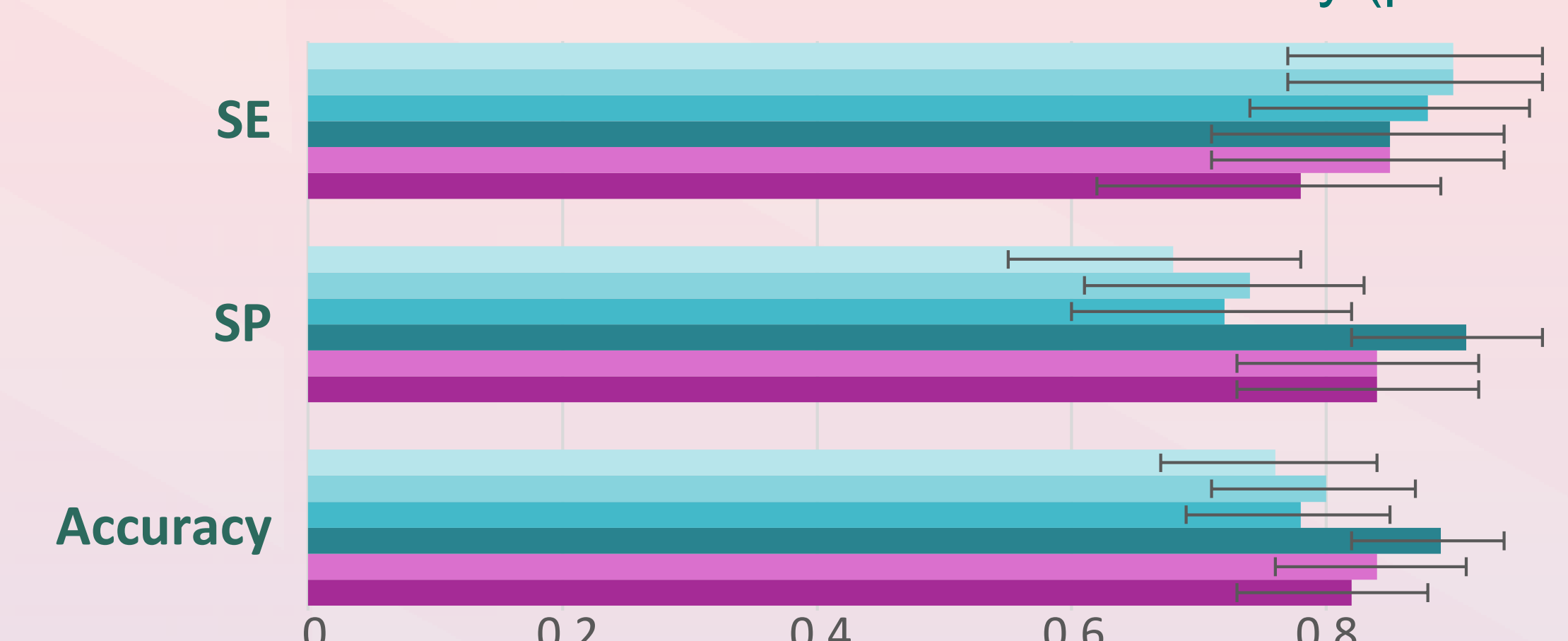
**Fig 2:** Comparison of performance to reproduce the consensus analysis ( $N_o=87, N_n=62$ )

When compared to the accuracy of each expert, no significant difference were observed:

with OCB-ES ( $\min_i p\text{-value}_{\text{OCB-ES vs expert}_i} = 0.17$ )

with OCB-DL ( $\min_i p\text{-value}_{\text{OCB-DL vs expert}_i} = 0.57$ )

OCB-ES and OCB-DL reached similar accuracy ( $p=0.52$ )



**Fig 3:** Comparison of performance to predict the clinical classification ( $N_{MS}=52, N_{\text{control}}=68$ )

When compared to the accuracy of each expert, no significant difference were observed:

with OCB-ES ( $\min_i p\text{-value}_{\text{OCB-ES vs expert}_i} = 0.11$ )

with OCB-DL ( $\min_i p\text{-value}_{\text{OCB-DL vs expert}_i} = 0.096$ )

OCB-ES and OCB-DL reached similar accuracy ( $p=0.58$ )

## CONCLUSIONS

- Our developed approaches successfully reproduced the consensus analysis and predicted final classification of the disease **with a level of competence comparable to clinical biologists**
- Expert-IEF is a promising easy-to-use decision support system for OCB detection
- In a future work, both approaches will be combined to make profit of their complementary advantages

## REFERENCES

- [1] Haddad F. et al. Toward an automatic tool for oligoclonal band detection in cerebrospinal fluid and tears for multiple sclerosis diagnosis: lane segmentation based on a ribbon univariate open active contour. *Med Biol Eng Comput.* 2020;58(5):967–76.
- [2] Haddad F. et al. Oligoclonal Band Straightening Based on Optimized Hierarchical Warping for Multiple Sclerosis Diagnosis. *Sensors.* 2022;22(3):724.
- [3] Haddad F. Expert-IEF : analyse automatique des images de focalisation isoélectrique pour le diagnostic de la sclérose en plaques, [PhD thesis]. Université du Littoral Côte d'Opale; 2022.

## DISCLOSURE

FH has received a PhD grant from the Ligue Française contre la sclérose en plaques. The POLAR study protocol was funded by PHRC, funding number: PHRCN 2011. FH, SB, LP, NV, JP, PH, VC and GF declare no current conflict of interest, but their institutions are negotiating a technology transfer with a company. Any future royalties will be used as a research funding by the authors' institutions and no royalties will be granted to the authors personally. The PhD funder and the company had no role in the design of the study; in the collection, analyses, or interpretation of data; in the writing of the manuscript, or in the decision to publish the results.

## CONTACT INFORMATION

farah.haddad@univ-catholille.fr