



**HAL**  
open science

## Temperature-dependent metabolic consequences of food deprivation in the European sardine

Elisa Thoral, Damien Roussel, Eric Gasset, Gilbert Dutto, Quentin Queiros, David Mckenzie, Jean-Hervé Bourdeix, Luisa Metral, Claire Saraux, Loïc Teulier

### ► To cite this version:

Elisa Thoral, Damien Roussel, Eric Gasset, Gilbert Dutto, Quentin Queiros, et al.. Temperature-dependent metabolic consequences of food deprivation in the European sardine. *Journal of Experimental Biology*, 2023, 226 (2), pp.jeb244984. 10.1242/jeb.244984 . hal-03980852

**HAL Id: hal-03980852**

**<https://hal.science/hal-03980852>**

Submitted on 13 Feb 2023

**HAL** is a multi-disciplinary open access archive for the deposit and dissemination of scientific research documents, whether they are published or not. The documents may come from teaching and research institutions in France or abroad, or from public or private research centers.

L'archive ouverte pluridisciplinaire **HAL**, est destinée au dépôt et à la diffusion de documents scientifiques de niveau recherche, publiés ou non, émanant des établissements d'enseignement et de recherche français ou étrangers, des laboratoires publics ou privés.

# Temperature-dependent metabolic consequences of food deprivation in the European sardine

Elisa Thoral<sup>1,‡</sup>, Damien Roussel<sup>1</sup>, Eric Gasset<sup>2</sup>, Gilbert Dutto<sup>2</sup>, Quentin Queiros<sup>3,4</sup>, David J. McKenzie<sup>5</sup>, Jean-Hervé Bourdeix<sup>3</sup>, Luisa Metral<sup>3</sup>, Claire Saraux<sup>3,6,\*</sup>, Loïc Teulier<sup>1,\*</sup>

<sup>1</sup>Univ Lyon, Université Claude Bernard Lyon 1, CNRS, ENTPE, UMR 5023 LEHNA, F-69622, Villeurbanne, France

<sup>2</sup>MARBEC, Université de Montpellier, CNRS, Ifremer, IRD, chemin de Maguelonne, 34250 Palavas-les-Flots, France

<sup>3</sup>MARBEC, Université de Montpellier, CNRS, Ifremer, IRD, Avenue Jean Monnet, 34203 Sète Cedex, France

<sup>4</sup>DECOD (Ecosystem Dynamics and Sustainability), INRAE, Institut Agro, IFREMER, Rennes, France

<sup>5</sup>MARBEC, Université de Montpellier, CNRS, Ifremer, IRD, Place Eugène Bataillon, 34095 Montpellier, France

<sup>6</sup>IPHC, UMR7178, Université de Strasbourg, CNRS, 67000 Strasbourg, France

\*Co-supervision

‡Corresponding author : Elisa Thoral, [elisathoral@gmail.com](mailto:elisathoral@gmail.com)

**Keywords:** Bioenergetics, red muscle, mitochondria, respirometry, global warming, small pelagic fish

## Abstract

Aquatic ecosystems can exhibit seasonal variation in resource availability and animals have evolved to cope with the associated caloric restriction. During winter in the NW Mediterranean Sea, the European sardine *Sardina pilchardus* naturally experiences caloric restriction due to a decrease in diversity and quantity of plankton. Ongoing global warming has, however, had deleterious effects on plankton communities such that food shortages may occur throughout the year, especially under warm conditions in the summer. We investigated the interactive effects of temperature and food availability on sardine metabolism, by continuously monitoring whole-animal respiration of groups of control (fed) and food-deprived sardines over a 60-day experiment in winter (12°C) or summer (20°C) conditions under natural photoperiod. In addition, we measured mitochondrial respiration of red muscle fibres, biometric variables and energy reserves, of individuals sampled at 30 and 60 days. This

revealed that winter food deprivation elicits energy saving mechanisms at whole animal and cellular levels by maintaining a low metabolism to preserve energy reserves, allowing high survival. By contrast, despite energy saving mechanisms at the mitochondrial level, whole animal metabolic rate was high during food deprivation in summer, causing increased consumption of energy reserves at the muscular level and high mortality after 60 days. Furthermore, a 5-day refeeding did not improve survival and mortalities actually continued, suggesting that long-term food deprivation at high temperatures caused profound stress in sardines that potentially impaired nutrient absorption.

## Introduction

Small pelagic fish are ecologically essential because of their central position in the food web (Cury et al., 2000), and are economically important as a fishery resource for humans (Pikitch et al., 2014). In the Mediterranean Sea, the European sardine, *Sardina pilchardus*, is the most emblematic small pelagic fish species owing to its abundance and the associated large fishery. It feeds on a variety of prey, from small phytoplankton to large zooplankton (Costalago and Palomera, 2014; Rumolo et al., 2016). In this temperate zone the composition of plankton communities varies seasonally, dominated by small primary producers in winter and by large phytoplankton and zooplankton species in summer (Romagnan et al., 2015). Moreover, in winter, plankton productivity is limited with low plankton biomass in surface waters (Auger et al., 2014). Consequently, in winter sardines are likely to endure periods of natural caloric restriction, which could be associated with periods of obligatory food deprivation. The Mediterranean Sea is oligotrophic and anthropogenic climate change may exacerbate this (Irwin and Oliver, 2009), by decreasing primary production (Auger *et al.*, 2014), plankton diversity (Boyce et al., 2010) or by changing the phenology of plankton growth (Hordoïr and Meier, 2012), especially in summer (Adrian et al., 2006; Lewandowska et al., 2014; Suikkanen et al., 2013). This would then lead to increased likelihood of caloric restriction for sardines because of a decrease in the size of their prey. That is, small plankton species are probably less energetic than larger species (Zarubin et al., 2014) and, in sardines, small plankton also cause a shift in foraging mode from prey capture to filter-feeding (Costalago et al., 2015; Garrido et al., 2007). In captive sardines, we have shown that this foraging shift triggers a decline in body condition and growth, in association with the development of mechanisms of energy sparing at the level of mitochondria (Thoral *et al.*, 2021b). Negative effects of global warming on plankton community biomass and diversity could cause sardines to face caloric restriction throughout the year, with profound

consequences for their energy balance. This situation should create an energy imbalance between increased metabolic demands of planktivorous fish (due to higher temperatures) and decreased plankton resources (Hays et al., 2005), which could in turn compromise fish's survival. These modifications of plankton communities may be a major explanatory factor for the disastrous situation of sardine populations in the Gulf of Lions (Saraux et al., 2019; Van Beveren et al., 2014).

Food deprivation in a warm environment should represent a major energetic challenge for ectothermic organisms such as fishes (Auer et al., 2016), because temperature will raise their metabolism and energy demands (Schulte, 2015). Mitochondrial metabolism, which produces the vast majority of cellular energy (ATP), increases with temperature. Warming could lead to higher energy wastage from increased proton leakage (*i.e.* LEAK respiration) and/or to a decrease in mitochondrial efficiency for ATP synthesis (Pichaud et al., 2019; Pörtner et al., 1999; Roussel and Voituron, 2020; Thorat et al., 2021b). On the other hand, food deprivation elicits a decrease in LEAK respiration in fish, which is associated with an increase in mitochondrial coupling efficiency (Salin et al., 2018). If we expect that high temperature would impede the decrease in LEAK respiration during a food deprivation, which is mandatory to reduce energy expenditure and promote survival, then an interaction between hot temperature and food deprivation could lead to harmful physiological consequences for fishes, including the sardine.

We investigated the combined physiological effects of food scarcity and seasonal temperature, by measuring the consequences of food deprivation for 30 or 60 days in sardines at 12°C (winter temperature) and 20°C (summer temperature) for individual survival and for aerobic metabolism at whole animal and cellular level. To do so, we measured whole-animal metabolic rate, as rate of oxygen uptake, as well as mitochondrial bioenergetics in red muscle, a highly aerobic tissue in fishes (Rome et al., 1988). Protein and lipid levels were also assessed in white muscle, to estimate whole animal energy reserves. In addition, extended food deprivation could eventually impair the capacity to digest and assimilate food (Zaldúa and Naya, 2014). Therefore, sardines were refed after 30 and 60 days of food deprivation, while monitoring mortality rates as a proxy of recovery from starvation.

## Materials and Methods

### *Ethical statement*

All experimental protocols complied with French and EU legislation regarding animal experimentation and were approved by the regional ethics committee for animal experimentation no. 36 (Languedoc-Roussillon) (project #10622).

### *Fish and experimental design*

Sardines (*Sardina pilchardus*) were captured off Sète (France) by a purse seine in spring, and acclimated at the Ifremer station of Palavas-Les-Flots for one month following the procedures detailed in Queiros *et al.*, 2019 (to undergo bacteriological and viral analyses and to wean them from live prey to commercial aquaculture feed). Fish were maintained in an outdoor 4.5 m<sup>3</sup> tank for 3 months and then in an indoor 3 m<sup>3</sup> tank for an additional 4 months, tanks were supplied with water directly pumped from the sea and filtered through sand filters. Water temperatures were not controlled except to maintain a minimum of 10°C in winter and maximum of 25°C in summer. The photoperiod was adjusted weekly to follow the natural cycle. Sardines were fed twice a day with commercial pellets, rations were adjusted according to prevailing temperature in order to maintain a body condition close to 1, based on previous experiments and monthly biometrics (daily feeding rates of 0.3% and 0.6% of fish mass at 12°C and 20°C, respectively). To allow for individual identification, A Tiny-tag (Biolog-id, Bernay, France, 0.03 g *i.e.* < 0.5% of sardine lowest body mass) was implanted in the dorsal muscle for individual identification, under anaesthesia (140 ppm benzocaine), all sardines survived and rapidly recovered normal behaviour.

At experimental onset, 304 sardines were distributed into eight experimental 90-L tanks (38 sardines per tank), to obtain a homogenous size and mass distribution among tanks (body mass [mean ± sd] = 14.17 ± 2.53 g; body length = 120.52 ± 5.44 mm). Prior to transfer, sardines were anaesthetized and total body length and mass were recorded (to the nearest 0.1 mm and 0.01 g, respectively).

This transfer was followed by 10 days of acclimation to the new tanks before the food deprivation experiment started. Sardines were divided in four treatments (see Figure 1), 2 replicates per treatment: (i) control sardines fed twice a day at 12°C (FED12), (ii) control sardines fed twice a day at 20°C (FED20), (iii) sardines food deprived at 12°C (FAS12) and (iv) sardines food deprived at 20°C (FAS20). The chosen temperatures were reached after gradual daily increase (+ ~2°C/day) from 13°C to 20°C for FED20 and FAS20, or decrease from 13°C to 12°C for FED12 and FAS12 groups (-0.5°C/day). These temperatures of 12 and

20°C were chosen because they occur in the Mediterranean Sea in winter and summer, respectively (Feuilloley et al., 2020; Teulier et al., 2019; Thoral et al., 2021a). More information about sardine holding can be found in the Supplemental Data (Paragraph 1). Biometries were performed at day 0, 30 and 60 by weighing each individual. The relative change in body mass per day between 0 and 30 days of experiment and between 30 and 60 days of experiment was calculated as follows:

$$\% \text{ Change in body mass} = \left( \frac{\Delta \text{body mass}}{\text{Initial body mass} * \Delta t} \right) * 100$$

All tanks were checked twice daily for mortalities. To assess the potential of food deprived sardines to restart feeding after 30 and 60 days, 5 to 8 fish per tank, that is 11 to 14 fish per treatment, were transferred to a new tank, where they were fed for 5 days; transfer of FED groups controlled for any effects of handling. Given high mortality in the FAS20 group, only 3 sardines were refed in this group after 60 days of food deprivation. The experimental treatment and assays extended from January 25 to April 10.

### ***In vivo oxygen consumption***

*In vivo* group metabolism was measured as oxygen consumption by the sardines in their custom-designed holding tanks, using automated stop-flow respirometry (Steffensen, 1989) modified for open tanks (McKenzie et al., 2007; McKenzie et al., 2012), exactly as described in Queiros et al. (2021). Briefly, this system alternated periods in a cycle comprising 30 min when the tanks were aerated and received a water supply versus 30 min when water supply and aeration were stopped, and the fish consumed the oxygen in the water. Water O<sub>2</sub> saturation never fell below 80% during the 30 min of closed respirometry and was rapidly restored when the tanks received a flow of aerated water. Water was mixed constantly in the tanks so there was a linear decline in water oxygen concentration due to consumption by the sardines. This was recorded continuously by oxygen probes (Firesting O<sub>2</sub>, PyroScience, Germany) and associated software (PyroScience Oxygen Logger). Oxygen consumption (MO<sub>2</sub>) was then calculated using a custom script on R software, to transform oxygen saturation (in %) into oxygen concentration, based upon established values of oxygen solubility as a function of temperature and salinity (measured twice a day in each tank). The slopes of decreasing oxygen concentration over time were estimated through a linear model using an automated R script. The first and last minute of measurement were removed before

estimating the slopes, and only slopes with an  $R^2 > 0.8$  were retained. Measurements collected during fish handling, feeding or any intervention on the tanks were removed. Thus only routine respiration was considered, including spontaneous activity and the postprandial period. The  $MO_2$  was calculated in  $mg\ O_2\ h^{-1}\ g^{-1}$  of fish, from the decline in water  $O_2$  concentration and considering the total volume of water and the total biomass of the fish (McKenzie et al., 2007; McKenzie et al., 2012). The changes of the total biomass of each tank were taken into account in  $MO_2$  calculations. The cyclical measures were then summed up into daily median rates of oxygen uptake. Because of the data distribution, the number of cycles measured per day was not homogenous (due to interventions on tanks, etc.), and the number of fish decreased over the experiment, we used the medians of respiration only for days when more than 5 cycles were measured and more than 12 fish were present. This threshold was chosen because when the number of individuals was lower than 12, the biomass was too low to provide consistent slopes with an  $R^2 > 0.8$ .

### ***Dissection and red muscle mitochondrial respiration***

After 30 and 60 days of food deprivation  $\pm 2$  days, 7 to 8 sardines were removed from each tank, sacrificed by anaesthetic overdose (1000 ppm benzocaine), weighed (body mass is shown in Table 2) and rapidly dissected to measure muscle composition and mitochondrial bioenergetics. These measurements were also done at day-0 and data are presented in Table S1 in Supplemental Data.

A small sample of red muscle ( $5.67 \pm 1.20$  mg) was taken on the midline of the flank, weighed and rapidly placed into ice-cold buffer MiR05 (0.5 mM EGTA, 3 mM  $MgCl_2$ , 60 mM K-lactobionate, 20mM Taurine, 10 mM  $KH_2PO_4$ , 20 mM HEPES, 110 mM Sucrose, 1 g/L free-fatty-acid bovine serum albumin, pH = 7.1 at 30°C, Kuznetsov *et al.*, 2008), for immediate use in mitochondrial respiration measurements. Fish were then dissected to assess sex, maturity stage (97% of fishes were mature) and total mass of red muscle and white muscle. White muscle samples were stored at -80°C for subsequent analyses. Gonad mass and proportion are reported in the Supplementary Data (Table S2).

Respiration of red muscle fibres was measured using Oxygraph-2K high resolution respirometers (Oroboros® Instruments - WGT Austria), with measurements carried out at the relevant acclimation temperature of the fish. Muscle samples were transferred to respirometer chambers containing 2 mL of MiR05, and mitochondrial function was measured at the acclimation temperature, with a substrate-uncoupler-inhibitor titration protocol adapted from Teulier *et al.*, 2019. Briefly, glutamate (10 mM), malate (2.5 mM), ADP (1 mM) and

succinate (5 mM) were sequentially added to obtain the phosphorylation respiration rate (*i.e.* OXPHOS respiration). Oligomycin ( $1.25 \mu\text{g mL}^{-1}$ ) was then added to inhibit ATP synthase to obtain the basal non phosphorylating respiration rate (*i.e.* LEAK respiration). Antimycin A ( $22.5 \mu\text{M}$ ), a complex III inhibitor, was then added in excess to fully inhibit the mitochondrial respiration in order to measure any residual non-mitochondrial respiration. All measured respiration rates were then corrected for this residual respiration. Integrity of the outer mitochondrial membrane was checked with the addition of cytochrome c ( $10 \mu\text{M}$ ) by verifying an absence of stimulation of the respiration after this injection (Teulier *et al.*, 2019). As the mean effect of the cytochrome was the same for all study groups, no data were removed from the analyses. All measured mitochondrial variables were normalized to body mass for statistical analyses.

### ***Protein and lipid assays***

Proteins and lipids were assayed on white muscle samples after being frozen at  $-80^{\circ}\text{C}$ , with the total amount of lipid and protein expressed in mg per gram of wet fish.

As described in Brosset *et al.*, 2015, lipids were extracted from  $\sim 0.15$  g of white muscle using a solvent mixture (chloroform-methanol 2:1 v/v) (Folch *et al.*, 1957). Extracts were then spotted to SIII Chromarods (Iatron Laboratoris) to separate lipid classes (aliphatic hydrocarbons, sterol and wax esters, ketones, triacylglycerols, free fatty acids, free fatty alcohols, free sterols, diacylglycerols, acetone mobile polar lipids and phospholipids) according to 3 successive developing baths in solvents of increased polarity. Chromatograms were then analysed using the Peak Simple software and lipid classes quantified using a standard calibration curve obtained for each lipid class. All experiments were done by the same person, with one replicate of each sample. The proportion of free fatty acids (FFA) was checked, and all samples containing more than 10% of FFAs were removed from analyses (out of a total of 172 assays, 8 assays with  $\sim 12\%$  FFAs were removed; Brosset *et al.*, 2015)", as this may be a sign of sample degradation during storage. All lipid classes were then summed to obtain total lipids.

As detailed in Queiros *et al.*, 2019 for protein assays,  $\sim 10$  mg of muscle samples ( $10.25 \pm 0.54\text{mg}$ ) were lyophilized and ground with a ball mill (MM400, Retsch GmbH, Germany) then immersed in a 1.5 mL solution containing 10% SDS (Sigma Aldrich, France), 1.5% Protease inhibitor Cocktail (cOmplet, Sigma Aldrich, France), miliQ water solution (lysis solution adapted from Campus *et al.*, 2010) and subjected to four cycles of 15 min in an ultrasonic bath (300 Ultrasonik, Ney Company, United State) alternated with 3 min vortex.



Extracts were clarified for 10 min at 3000g at 4°C, and protein content quantified by the BCA method (Pierce, Thermo Fisher Scientific, France). All samples were measured in duplicate, and intra- and inter-plate protein variations were 3.1% and 5.0%, respectively.

### ***Statistical analysis***

Effects of food deprivation, temperature and time were evaluated for all physiological and morphometric characteristics by linear-models (LM), or linear mixed-models (LMM) to account for dependency of the data when there was more than one measure per individual (*i.e.* for analyses of the relative change in body mass). Temperature (12°C or 20°C), treatment (control or food deprivation), time (30 or 60 days) as well as their triple interaction and the 3 double interactions were included in models as fixed effects. The model was then simplified according to a stepwise procedure by removing non-significant interactions and fixed effects (only when not involved on any remaining interactions). Groups were then compared through post-hoc tests, using the *emmeans*- or *glht*-function, when any of the interactions were significant ( $P < 0.050$ ). Normality of residuals was tested using a Shapiro-Wilk test. When normality assumptions were not met, data were transformed using a monotonous positive transformation: the Box Cox transformation. Normality was then re-tested on residuals and the model run with the transformed data. When results from analyses on transformed data were similar to those obtained on raw data, results on raw data were kept for clarity purposes.

Survival analyses were performed based on the distribution of survival times using the Cox proportional-hazards regression model (Lin and Wei, 1989) to assess the effect of temperature and food deprivation on fish survival over 60 days. Data from refeeding are presented as % survival over the 5-day period with no statistical analyses due to small sample sizes.

After pooling the respiration data between 0 and 30 days and between 30 and 60 days, we compared dependence of metabolic rates on temperature, treatment and periods, and their interactions, with linear mixed-models and post-hoc analyses.

The level of significance was  $P < 0.050$ . Values are presented as mean  $\pm$  sem. Statistical analyses were performed in R v. 4.0.3 using the packages *lme4*, *lsmeans* and *multcomp*.

## Results

All model results are presented in Table S3, Supplementary Data.

### *Survival rate*

As seen in Figure 2, both high temperature (odds ratio= 6.035; CI95 =[2.519-14.460]) and food deprivation (odds ratio= 3.344, CI95 = [1.619- 6.907]) had a detrimental effect on survival, which was significantly lower after 60 days food deprivation at 20°C (44%) compared to the other groups (FED20: 86%; FAS12: 94%; FED12: 98%). Although we did not perform statistical analyses due to small sample sizes, it appears that refeeding sardines after a period of 30 or 60 days of food deprivation did not improve survival (Table 1). Rather, food deprived sardines transferred to another tank for refeeding appeared to have even lower survival than the sardines remained without food in their tank, an effect that did not occur in control fish and might have been exacerbated at high temperature.

### *Metabolic rates*

The metabolic rates of sardines in their tanks are shown in Figure 3. Regardless of the period, metabolism at 20°C was higher than at 12°C, both in fed ( $P<0.001$ ) and food deprived fish ( $P<0.001$ ). An effect of food deprivation was only visible at 20°C between 30 and 60 days, when FAS20 metabolic rate was lower than FED20 ( $P<0.001$ ). Finally, the respiration of FED20, FAS12 and FAS20 increased over the two periods (FED20:  $P<0.001$ ; FAS12:  $P=0.065$ ; FAS20:  $P<0.001$ ).

### *Biometric characteristics*

Regardless of the time period, food deprivation significantly decreased body mass at both temperatures ( $P<0.001$ ; Tables S3), with total and daily mass loss that were significantly higher in FAS20 compared to FAS12 ( $P<0.001$ , Table 2 and Figure 4).

Similarly, food deprivation decreased absolute red muscle mass ( $P<0.001$ ) but not the ratio of red muscle mass to body mass (Table 2). Absolute and relative red muscle mass were also lower overall at 20°C than at 12°C, regardless of nutritional status or time period ( $P<0.001$ , Table 2).

White muscle absolute and relative mass were also negatively affected by food deprivation and temperature (Table S3), both being lower in FAS20 compared to FAS12 after 30 days of food deprivation ( $P<0.05$  and  $P=0.063$ , respectively; Table 2). These variables were also lower in FED20 after 60 days compared to 30 days ( $P<0.05$  and  $P<0.05$ , respectively).

The proportion of proteins in white muscle was negatively affected by food deprivation ( $P<0.001$ ) and decreased overall at 20°C compared to 12°C ( $P<0.01$ , Table S3). It was also lower after 60 days compared to 30 days ( $P<0.05$ ). However, the proportion of total lipids exhibited a more complex pattern, it was lower in FAS20 compared to FAS12 fish after 30 days of food deprivation ( $P<0.001$ ), but increased in FAS20 fish after 60 days compared to 30 days ( $P<0.05$ ).

### *Mitochondrial respiration*

The LEAK respiration was significantly affected by temperature (Table S3), being on the whole higher at 20°C than 12°C, especially in FED20 fish compared to FED12 fish after 60 days ( $P<0.05$ , Figure 5). Food deprivation also affected the LEAK respiration at 20°C after 60 days, as it was significantly lower in FAS20 fish compared to FED20 fish ( $P<0.05$ ) and compared to FAS20 fish after 30 days ( $P<0.05$ ).

The OXPHOS respiration was mainly affected by time (Table S3), as it decreased with time in FED12 fish ( $P<0.05$ ), and in food deprived fish, regardless of the temperature ( $P<0.01$ ). A significant interaction between treatment and time also exists (Table S3), with OXPHOS respiration being significantly lower at 20°C in food deprived fish after 60 days ( $P<0.05$ ; Figure 5).

## **Discussion**

The results demonstrate that the effects of food deprivation on metabolism were exacerbated at high temperature in sardines, with a more rapid use of energy reserves and a greater depression of mitochondrial metabolism. This was indicative of entry into a critical phase of food deprivation, as revealed by the more rapid and profound decrease in body and muscle mass and higher mortality at warm temperatures. The physiological consequences of food deprivation are separated into three sequential phases: phase I, a short period of metabolic adjustment during which protein utilization decreases; phase II, a fasting period characterized by the development of many energy-saving mechanisms during which lipids are the main energy fuel and protein utilization remains at a steady low level; phase III, a critical phase during which amino acids are oxidized, protein utilization increases and the survival of individual becomes compromised (Bar, 2014). Then, an entry into the critical phase seems to have occurred between 30 and 60 days of food deprivation at summer temperatures, since mortality was increased in warm food deprived individuals. These negative impacts of food deprivation must be attributed, to some degree, to the higher metabolic rates at warm

temperature. As the survival of sardines was not impacted by food deprivation at low temperature, winter conditions would seem to allow implementation of energy-saving mechanisms that endure over time.

### ***Interaction between temperature and food deprivation***

As expected, fish food deprived at high temperature faced a major energetic paradox, with the need to save energy to survive but in a warm environment that increases energy expenditure. For instance, food deprivation leads to a decrease in metabolic rate in fishes, as a consequence of physiological and behavioural energy saving strategies (Cook et al., 2000; McKenzie et al., 2014), while an increase in temperature leads to an increase in metabolism (Schulte et al., 2011). In our study, despite a decrease in respiration after 60 days of food deprivation, the metabolic rate of food deprived fish at 20°C remained higher than that measured at 12°C in fed or food deprived fish. Moreover, as observed in Queiros *et al.*, 2021, the respiration of sardines food deprived at 20°C actually increased after 50 days of food deprivation, which may indicate an entry into the critical fasting phase (Bar, 2014; Queiros et al., 2021). At a cellular level, the combination of food deprivation and warmth for 60 days elicited energy-saving mechanisms characterized by a decrease in mitochondrial maintenance costs (*i.e.* lower LEAK respiration), and in oxidative capacity (*i.e.* lower OXPPOS respiration). This combination of decrease in mitochondrial maintenance cost (LEAK respiration) and power (OXPPOS respiration) occur during the critical phase of food deprivation in birds (Bourguignon et al., 2017; Monternier et al., 2017).

The mobilization of different energetic reserves depends on the food deprivation phase (Bar, 2014). Carbohydrates are mobilized first from liver and muscle, followed by lipids and then proteins after several weeks, leading to a decrease in tissue and body mass (Blasco et al., 1992). In our study, two months of food deprivation caused a decrease in protein in white muscle, linked to a decrease in muscle mass (Table 2), which resulted in a loss of body mass that was exacerbated at 20°C. However, we observed no change in lipid proportions in white muscle at 12°C, and a decrease after 30 days of food deprivation at 20°C but followed by an increase after 60 days. While this increase in lipid proportion after 60 days seems surprising, it might be related to the fact that it is relative to fish mass. Indeed, if lipids are no longer the main energy substrate during the critical phase of food deprivation (Bar, 2014), the absolute quantity should remain relatively stable while fish mass decreases due to the massive use of proteins, resulting in an increase in lipid proportion, as muscle is the main lipid store in sardines (Venugopal and Shahidi, 1996).

In summary, the use of energy reserves, in association with cellular energy saving, was sufficient to allow individuals food deprived at 12°C to survive but not at 20°C. Consequently, the combination of warming and food deprivation lead to the major decline body mass (Chatzifotis *et al.*, 2018) and survival rate.

### ***Ineffective refeeding at high temperatures***

It is interesting that mortality in fish food deprived at 20°C could not be avoided by 5 days of refeeding. This might appear surprising as many studies have shown beneficial effects of refeeding after long-term food deprivation. In Atlantic salmon *Salmo salar*, 10 days of refeeding are sufficient to regenerate tissue mass and enzyme activities after 50 days of food deprivation at 9°C (Van Dijk *et al.*, 2005), additionally suggesting that cold temperature could be beneficial for food deprived fish to survive. Moreover, after 3 weeks of food deprivation, one week of refeeding leads to compensatory growth and more efficient use of food by roach *Rutilus rutilus* (Van Dijk *et al.*, 2002). On the contrary, our observations suggest that 60 days of food deprivation might be too long for a full recovery of sardines after refeeding. Perhaps, long-term food deprivation can lead to morphological changes in the digestive tract (Zaldúa and Naya, 2014), which could result in poor absorption of nutrients, making refeeding ineffective. In addition, as mortality rate seemed to increase in food deprived fish at 12°C after refeeding, notably after 60 days of food deprivation, the stress caused by handling could have been too great for a positive effect of refeeding (Olsen *et al.*, 2002). However, it has been shown in various fish species that several weeks of food deprivation do not affect resistance to an acute stress, like a handling disturbance (Davis and Gaylord, 2011; Jørgensen *et al.*, 2002; Mørkøre *et al.*, 2008). Nevertheless, as no effect of handling was observed on fish from control treatments at 12 or 20°C, this suggests that food deprived sardines might become more sensitive to additional stress (Vijayan and Moon, 1992), a phenomenon that could play an important role in the wild where multiple additional stressors exist (predation, pollution, pathogens, etc.).

### ***Adaptation to food deprivation in winter***

In our study, food deprivation in cool winter conditions did not seem to be especially problematic for sardines. Respiration of food deprived fish was equivalent to, or lower than, fed fish at the same temperature, as observed in the ectothermic amphibian *Bufo marinus* after 9 days of food deprivation at 10°C (Trzcionka *et al.*, 2008). In the same study, a decrease in LEAK respiration in response to food deprivation combined with cold exposure was observed

in *B. marinus* liver but not muscle. In our study, mitochondrial respiration was maintained after 30 days and only slightly decreased after 60 days for OXPHOS respiration in red muscle. Moreover, multiple physiological variables, such as lipid content and the relative mass of red and white muscle, did not change over the 60 days of food deprivation (Table 2), as has been observed for liver substrates in *Rutilus rutilus* after 21 days of food deprivation at 4°C (Van Dijk et al., 2005). As resources are naturally scarce during winter, sardines may have adapted to a lack of food in the cold season.

## Conclusion

In sardines, long-term winter food deprivation did not have adverse physiological consequences, eliciting energy-saving mechanisms that endured over time. However, food deprivation in summer was clearly very problematic; mitochondrial adjustments for cellular energy saving were not sufficient to compensate a high metabolic rate, leading to declines in body mass and survival after 60 days of food deprivation. Furthermore, 5 days of refeeding did not improve survival of the sardines, especially at 20°C, suggesting that long-term food deprivation in a warm environment may cause irreversible deterioration of the ability to assimilate nutrients. This could have potentially catastrophic consequences if it occurred in wild populations, considering that summer food availability may be more variable in the future.

## List of symbols and abbreviations

COX: cytochrome c oxidase

FED: fed or control

FAS: food deprived

LEAK respiration: basal respiration rate

LM: linear model

LMM: linear-mixed model

MO<sub>2</sub>: oxygen consumption

OXPHOS respiration: phosphorylation respiration rate

## Acknowledgements

We thank Karine Salin for her advice on the protocol for measuring mitochondrial respiration. We also thank Camille Huiban for taking care of the sardines before the experiments, and

captain Jordan Valentin and his team of fishermen who helped capture the fish. We also thank two anonymous reviewers for their constructive comments.

### **Competing interests**

Authors declare they have no competing interests.

### **Author contributions**

LT, CS, ET, DMK and DR conceived and designed the study. ET, LT, CS, GD, EG, QQ, DMK, JHB and LM carried out the study. GD, EG and ET took care of the fish. GD and EG participated in the experiments. ET and CS analysed the data. ET, CS and LT drafted the manuscript. All authors reviewed and revised the article critically and approved the final version.

### **Funding**

This study was funded through the MONALISA project, financed by the European Union and the French Ministry of Agriculture through the European Maritime and Fisheries Fund (EMFF) as well as France Filière Pêche.

### **Data availability**

The datasets will be made public if the article is accepted.

### **References**

- Adrian, R., Wilhelm, S. and Gerten, D.** (2006). Life-history traits of lake plankton species may govern their phenological response to climate warming. *Glob. Chang. Biol.* **12**, 652–661.
- Auer, S. K., Salin, K., Rudolf, A. M., Anderson, G. J. and Metcalfe, N. B.** (2016). Differential effects of food availability on minimum and maximum rates of metabolism. *Biol. Lett.* **12**, 0–4.
- Auger, P. A., Ulses, C., Estournel, C., Stemmann, L., Somot, S. and Diaz, F.** (2014). Interannual control of plankton communities by deep winter mixing and prey/predator interactions in the NW Mediterranean: Results from a 30-year 3D modeling study. *Prog. Oceanogr.* **124**, 12–27.
- Bar, N.** (2014). Physiological and hormonal changes during prolonged starvation in fish. *Can. J. Fish. Aquat. Sci.* **71**, 1447–1458.

- Blasco, J., Fernfindez, J., Gutierrez, J., Fisiologia, U., Bioquímica, D., Biología, F., Barcelona, U. and Diagonal, A.** (1992). Fasting and refeeding in carp, *Cyprinus carpio* L.: the mobilization of reserves and plasma metabolite and hormone variations. 539–546.
- Bourguignon, A., Rameau, A., Toullec, G., Romestaing, C. and Roussel, D.** (2017). Increased mitochondrial energy efficiency in skeletal muscle after long-term fasting: Its relevance to animal performance. *J. Exp. Biol.* **220**, 2445–2451.
- Boyce, D. G., Lewis, M. R. and Worm, B.** (2010). Global phytoplankton decline over the past century. *Nature* **466**, 591–596.
- Brosset, P., Fromentin, J. M., Ménard, F., Pernet, F., Bourdeix, J. H., Bigot, J. L., Van Beveren, E., Pérez Roda, M. A., Choy, S. and Saraux, C.** (2015). Measurement and analysis of small pelagic fish condition: A suitable method for rapid evaluation in the field. *J. Exp. Mar. Bio. Ecol.* **462**, 90–97.
- Campus, M., Addis, M. F., Cappuccinelli, R., Porcu, M. C., Pretti, L., Tedde, V., Secchi, N., Stara, G. and Roggio, T.** (2010). Stress relaxation behaviour and structural changes of muscle tissues from Gilthead Sea Bream (*Sparus aurata* L.) following high pressure treatment. *J. Food Eng.* **96**, 192–198.
- Chatzifotis, S., Clavero, S., Kounna, C., Soumalevris, A., Feidantsis, K. and Antonopoulou, E.** (2018). Effects of long-term feed deprivation on body weight loss, muscle composition, plasma metabolites, and intermediate metabolism of meagre (*Argyrosomus regius*) under different water temperatures. *Fish Physiol. Biochem.* **44**, 527–542.
- Cook, J. T., Sutterlin, A. M. and McNiven, M. A.** (2000). Effect of food deprivation on oxygen consumption and body composition of growth-enhanced transgenic Atlantic salmon (*Salmo salar*). *Aquaculture* **188**, 47–63.
- Costalago, D. and Palomera, I.** (2014). Feeding of European pilchard (*Sardina pilchardus*) in the northwestern Mediterranean: from late larvae to adults. *Sci. Mar.* **78**, 41–54.
- Costalago, D., Garrido, S. and Palomera, I.** (2015). Comparison of the feeding apparatus and diet of European sardines *Sardina pilchardus* of Atlantic and Mediterranean waters: Ecological implications. *J. Fish Biol.* **86**, 1348–1362.
- Cury, P., Bakun, A., Crawford, R. J. M., Jarre, A., Quiñones, R. A., Shannon, L. J. and Verheye, H. M.** (2000). Small pelagics in upwelling systems: Patterns of interaction and structural changes in “wasp-waist” ecosystems. *ICES J. Mar. Sci.* **57**, 603–618.



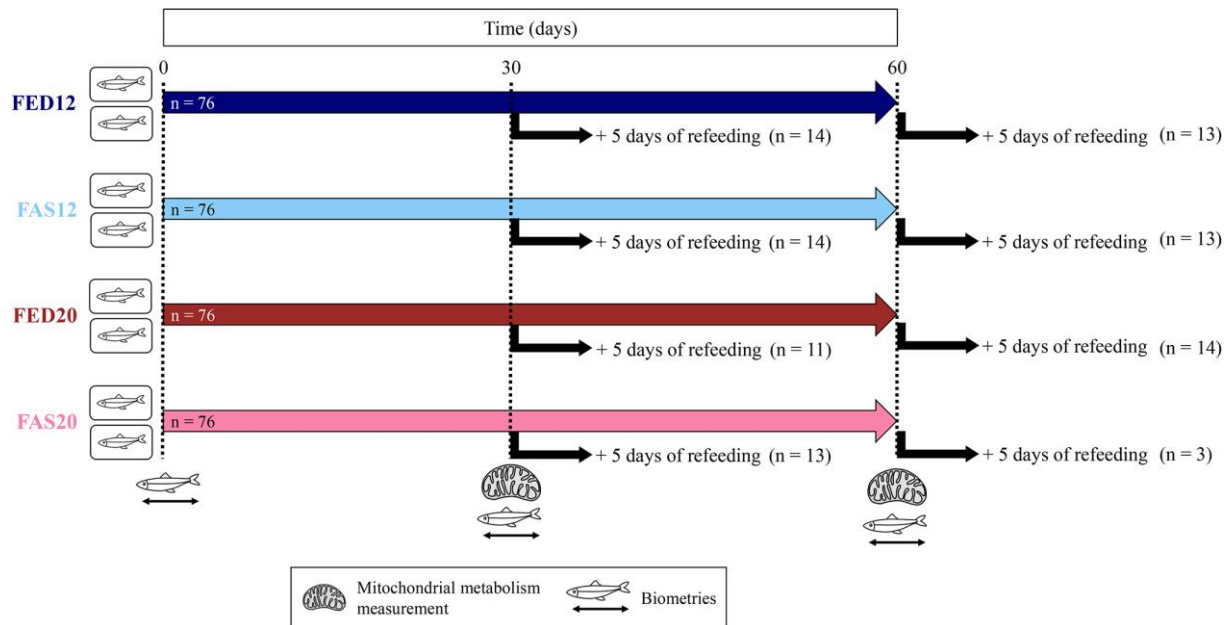
- Davis, K. B. and Gaylord, T. G.** (2011). Effect of fasting on body composition and responses to stress in sunshine bass. *Comp. Biochem. Physiol. - A Mol. Integr. Physiol.* **158**, 30–36.
- Feuilloley, G., Fromentin, J. M., Stemmann, L., Demarcq, H., Estournel, C. and Saraux, C.** (2020). Concomitant changes in the environment and small pelagic fish community of the Gulf of Lions. *Prog. Oceanogr.* **186**, 102375.
- Folch, J., Lees, M. and Sloane Stanley, G. H.** (1957). A simple method for the isolation and purification of total lipides from animal tissues. *J. Biol. Chemistry* **226**, 497–509.
- Garrido, S., Marçalo, A., Zwolinski, J. and Van Der Lingen, C. D.** (2007). Laboratory investigations on the effect of prey size and concentration on the feeding behaviour of *Sardina pilchardus*. *Mar. Ecol. Prog. Ser.* **330**, 189–199.
- Hays, G. C., Richardson, A. J. and Robinson, C.** (2005). Climate change and marine plankton. *Trends Ecol. Evol.* **20**, 337–344.
- Hordoir, R. and Meier, H. E. M.** (2012). Effect of climate change on the thermal stratification of the baltic sea: A sensitivity experiment. *Clim. Dyn.* **38**, 1703–1713.
- Irwin, A. J. and Oliver, M. J.** (2009). Are ocean deserts getting larger ? **36**, 1–5.
- Jørgensen, E. H., Vijayan, M. M., Aluru, N. and Maule, A. G.** (2002). Fasting modifies Aroclor 1254 impact on plasma cortisol, glucose and lactate responses to a handling disturbance in Arctic charr. *Comp. Biochem. Physiol. - C Toxicol. Pharmacol.* **132**, 235–245.
- Kuznetsov, A. V., Veksler, V., Gellerich, F. N., Saks, V., Margreiter, R. and Kunz, W. S.** (2008). Analysis of mitochondrial function *in situ* in permeabilized muscle fibers, tissues and cells. *Nat. Protoc.* **3**, 965–976.
- Lewandowska, A. M., Boyce, D. G., Hofmann, M., Matthiessen, B., Sommer, U. and Worm, B.** (2014). Effects of sea surface warming on marine plankton. *Ecol. Lett.* **17**, 614–623.
- Lin, D. Y. and Wei, L. J.** (1989). The robust inference for the cox proportional hazards model. *J. Am. Stat. Assoc.* **84**, 1074–1078.
- McKenzie, D. J., Pedersen, P. B. and Jokumsen, A.** (2007). Aspects of respiratory physiology and energetics in rainbow trout (*Oncorhynchus mykiss*) families with different size-at-age and condition factor. *Aquaculture* **263**, 280–294.
- McKenzie, D. J., Höglund, E., Dupont-Prinet, A., Larsen, B. K., Skov, P. V., Pedersen, P. B. and Jokumsen, A.** (2012). Effects of stocking density and sustained aerobic exercise on growth, energetics and welfare of rainbow trout. *Aquaculture* **338–341**, 216–222.

- McKenzie, D. J., Vergnet, A., Chatain, B., Vandeputte, M., Desmarais, E., Steffensen, J. F. and Guinand, B.** (2014). Physiological mechanisms underlying individual variation in tolerance of food deprivation in juvenile European sea bass, *Dicentrarchus labrax*. *J. Exp. Biol.* **217**, 3283–3292.
- Monternier, P. A., Teulier, L., Drai, J., Bourguignon, A., Collin-Chavagnac, D., Hervant, F., Rouanet, J. L. and Roussel, D.** (2017). Mitochondrial oxidative phosphorylation efficiency is upregulated during fasting in two major oxidative tissues of ducklings. *Comp. Biochem. Physiol. -Part A Mol. Integr. Physiol.* **212**, 1–8.
- Mørkøre, T., Mazo T., P. I., Tahirovic, V. and Einen, O.** (2008). Impact of starvation and handling stress on rigor development and quality of Atlantic salmon (*Salmo salar* L). *Aquaculture* **277**, 231–238.
- Olsen, R. E., Sundell, K., Hansen, T., Hemre, G. I., Myklebust, R., Mayhew, T. M. and Ringø, E.** (2002). Acute stress alters the intestinal lining of Atlantic salmon, *Salmo salar* L.: An electron microscopical study. *Fish Physiol. Biochem.* **26**, 211–221.
- Pichaud, N., Ekström, A., Breton, S., Sundström, F., Rowinski, P., Blier, P. U. and Sandblom, E.** (2019). Cardiac mitochondrial plasticity and thermal sensitivity in a fish inhabiting an artificially heated ecosystem. *Sci. Rep.* **9**, 1–11.
- Pikitch, E. K., Rountos, K. J., Essington, T. E., Santora, C., Pauly, D., Watson, R., Sumaila, U. R., Boersma, P. D., Boyd, I. L., Conover, D. O., et al.** (2014). The global contribution of forage fish to marine fisheries and ecosystems. *Fish Fish.* **15**, 43–64.
- Pörtner, H. O., Hardewig, I. and Peck, L. S.** (1999). Mitochondrial function and critical temperature in the Antarctic bivalve, *Laternula elliptica*. *Comp. Biochem. Physiol. - A Mol. Integr. Physiol.* **124**, 179–189.
- Queiros, Q., Fromentin, J. M., Gasset, E., Dutto, G., Huiban, C., Metral, L., Leclerc, L., Schull, Q., McKenzie, D. J. and Saraux, C.** (2019). Food in the sea: Size also matters for pelagic fish. *Front. Mar. Sci.* **6**, 1–13.
- Queiros, Q., Saraux, C., Dutto, G., Gasset, E., Marguerite, A., Brosset, P., Fromentin, J.-M. and McKenzie, D. J.** (2021). Is starvation a cause of overmortality of the Mediterranean sardine? *Mar. Environ. Res.* **170**, 105441.
- Romagnan, J.-B., Legendre, L., Guidi, L., Jamet, J.-L., Jamet, D., Mousseau, L., Pedrotti, M.-L., Picheral, M., Gorsky, G., Sardet, C., et al.** (2015). Comprehensive model of annual phytoplankton succession based on the whole-plankton time series approach. *PLoS One* **10**,.

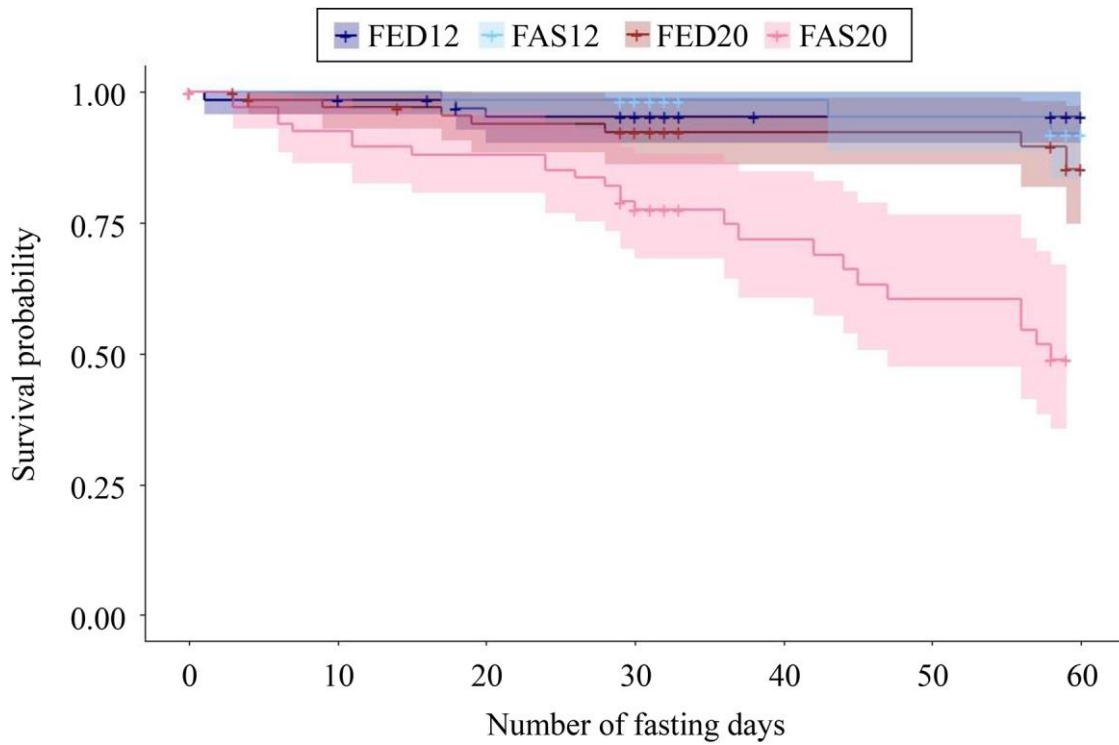
- Rome, L. C., Funke, R. P., Alexander, R. M., Lutz, G., Aldridge, H., Scott, F. and Freadman, M.** (1988). Why animals have different muscle fibre types. *Nature* **335**,.
- Roussel, D. and Voituron, Y.** (2020). Mitochondrial Costs of Being Hot: Effects of Acute Thermal Change on Liver Bioenergetics in Toads (*Bufo bufo*). *Front. Physiol.* **11**, 1–10.
- Rumolo, P., Bonanno, A., Barra, M., Fanelli, E., Calabrò, M., Genovese, S., Ferreri, R., Mazzola, S. and Basilone, G.** (2016). Spatial variations in feeding habits and trophic levels of two small pelagic fish species in the central Mediterranean Sea. *Mar. Environ. Res.* **115**, 65–77.
- Salin, K., Villasevil, E. M., Anderson, G. J., Auer, S. K., Selman, C., Hartley, R. C., Mullen, W., Chinopoulos, C. and Metcalfe, N. B.** (2018). Decreased mitochondrial metabolic requirements in fasting animals carry an oxidative cost. *Funct. Ecol.* **32**, 2149–2157.
- Saraux, C., Van Beveren, E., Brosset, P., Queiros, Q., Bourdeix, J. H., Dutto, G., Gasset, E., Jac, C., Bonhommeau, S. and Fromentin, J. M.** (2019). Small pelagic fish dynamics: A review of mechanisms in the Gulf of Lions. *Deep. Res. Part II Top. Stud. Oceanogr.* **159**, 52–61.
- Schulte, P. M.** (2015). The effects of temperature on aerobic metabolism: Towards a mechanistic understanding of the responses of ectotherms to a changing environment. *J. Exp. Biol.* **218**, 1856–1866.
- Schulte, P. M., Healy, T. M. and Fanguie, N. A.** (2011). Thermal performance curves, phenotypic plasticity, and the time scales of temperature exposure. *Integr. Comp. Biol.* **51**, 691–702.
- Steffensen, J. F.** (1989). Some errors in respirometry of aquatic breathers: How to avoid and correct for them. *Fish Physiol. Biochem.* **6**, 49–59.
- Suikkanen, S., Pulina, S., Engström-Öst, J., Lehtiniemi, M., Lehtinen, S. and Brutemark, A.** (2013). Climate Change and Eutrophication Induced Shifts in Northern Summer Plankton Communities. *PLoS One* **8**, 1–10.
- Teulier, L., Thorat, E., Queiros, Q., McKenzie, D. J., Roussel, D., Dutto, G., Gasset, E., Bourjea, J. and Saraux, C.** (2019). Muscle bioenergetics of two emblematic Mediterranean fish species: *Sardina pilchardus* and *Sparus aurata*. *Comp. Biochem. Physiol. -Part A Mol. Integr. Physiol.* **235**, 174–179.

- Thoral, E., Queiros, Q., Roussel, D., Dutto, G., Gasset, E., McKenzie, D. J., Romestaing, C., Fromentin, J. M., Saraux, C. and Teulier, L.** (2021a). Changes in foraging mode caused by a decline in prey size have major bioenergetic consequences for a small pelagic fish. *J. Anim. Ecol.* 2289–2301.
- Thoral, E., Roussel, D., Chinopoulos, C., Teulier, L. and Salin, K.** (2021b). Low oxygen levels can help to prevent the detrimental effect of acute warming on mitochondrial efficiency in fish. *Biol. Lett.* 17,.
- Trzcionka, M., Withers, K. W., Klingenspor, M. and Jastroch, M.** (2008). The effects of fasting and cold exposure on metabolic rate and mitochondrial proton leak in liver and skeletal muscle of an amphibian, the cane toad *Bufo marinus*. *J. Exp. Biol.* 211, 1911–1918.
- Van Beveren, E., Bonhommeau, S., Fromentin, J. M., Bigot, J. L., Bourdeix, J. H., Brosset, P., Roos, D. and Saraux, C.** (2014). Rapid changes in growth, condition, size and age of small pelagic fish in the Mediterranean. *Mar. Biol.* 161, 1809–1822.
- Van Dijk, P. L. M., Staaks, G. and Hardewig, I.** (2002). The effect of fasting and refeeding on temperature preference, activity and growth of roach, *Rutilus rutilus*. *Oecologia* 130, 496–504.
- Van Dijk, P. L. M., Hardewig, I. and Hölker, F.** (2005). Energy reserves during food deprivation and compensatory growth in juvenile roach: The importance of season and temperature. *J. Fish Biol.* 66, 167–181.
- Venugopal, V. and Shahidi, F.** (1996). Structure and composition of fish muscle. *Food Rev. Int.* 12, 175–197.
- Vijayan, M. M. and Moon, T. W.** (1992). Acute handling stress alters hepatic glycogen metabolism in food-deprived rainbow trout (*Oncorhynchus mykiss*). *Can. J. Fish. Aquat. Sci.* 49,.
- Zaldúa, N. and Naya, D. E.** (2014). Digestive flexibility during fasting in fish: A review. *Comp. Biochem. Physiol. - A Mol. Integr. Physiol.* 169, 7–14.
- Zarubin, M., Farstey, V., Wold, A., Falk-Petersen, S. and Genin, A.** (2014). Intraspecific differences in lipid content of calanoid copepods across fine-scale depth ranges within the photic layer. *PLoS One* 9, 1–10.

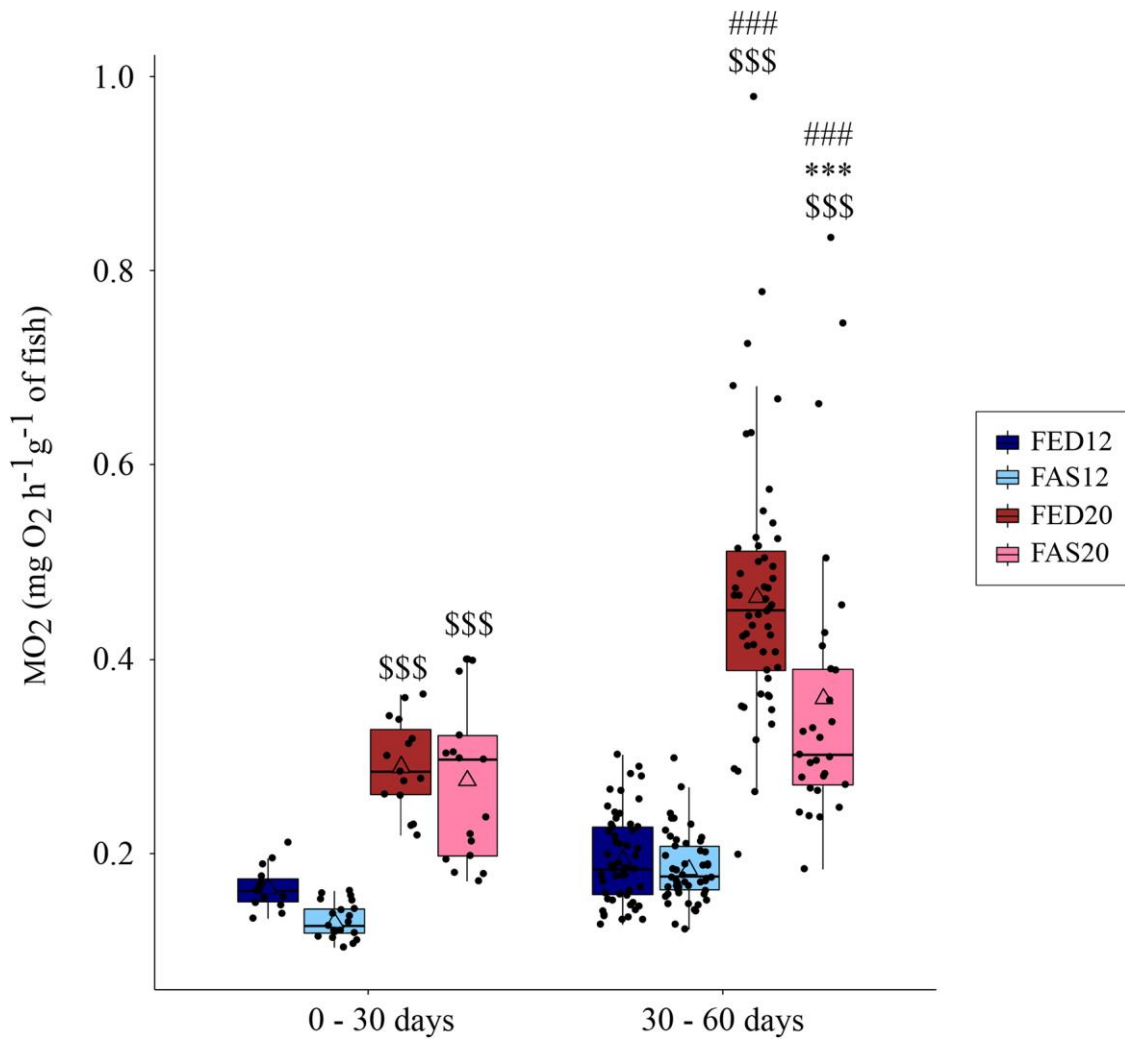
## Figures and Tables



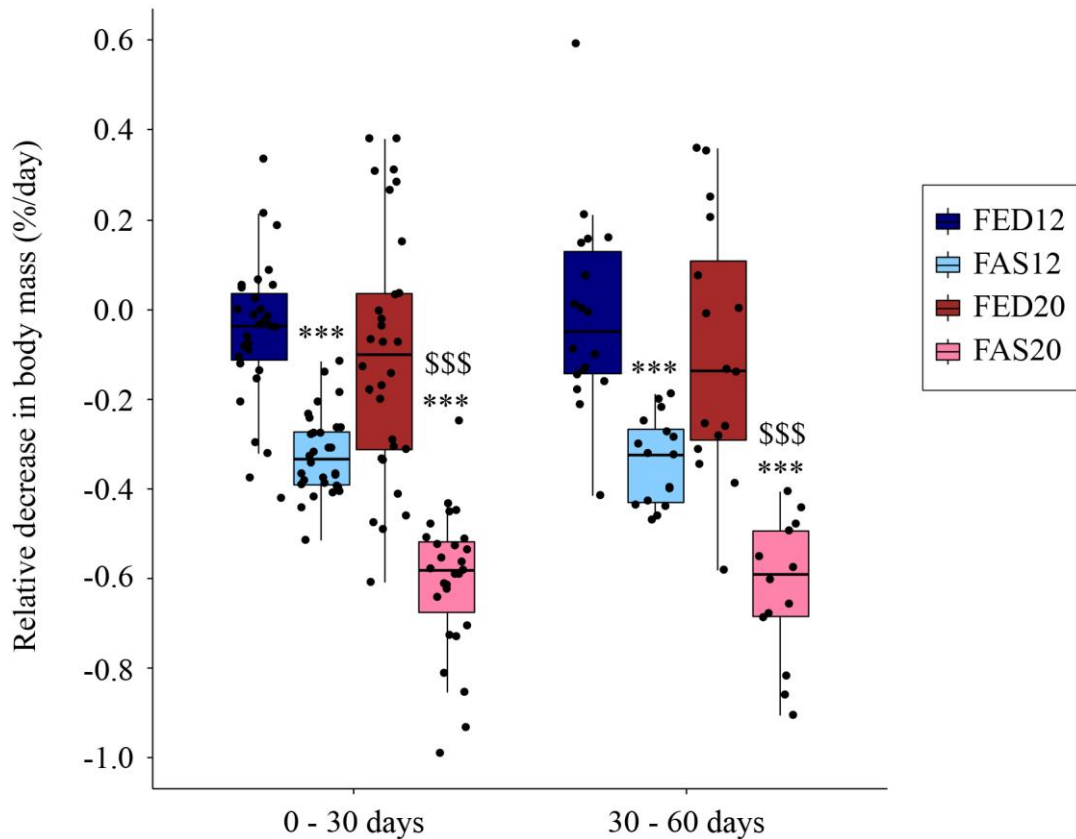
**Fig. 1.** Experimental protocol with four treatments in duplicate: control sardines fed twice a day at 12°C (FED12), control sardines fed twice a day at 20°C (FED20), sardines food deprived at 12°C (FAS12) and sardines food deprived at 20°C (FAS20). Some fish from food deprived and control groups were re-fed for 5 days after 30 or 60 days of food deprivation. Other fish were removed from their respective tanks at 30 or 60 days to measure the mitochondrial metabolism in red muscle samples.  $MO_2$  was measured between 0 and 60 days. Biometries were performed at 0, 30 and 60 days and mitochondrial metabolism measurements were done after 30 and 60 days.



**Fig. 2.** Survival of fed and food deprived fish at 12°C and 20°C during the 60 days of experiment. The crosses represent individuals that have been taken for mitochondrial measurements, as well as those placed on refeeding, *i.e.* for which survival was not measured until the end of the experiment.

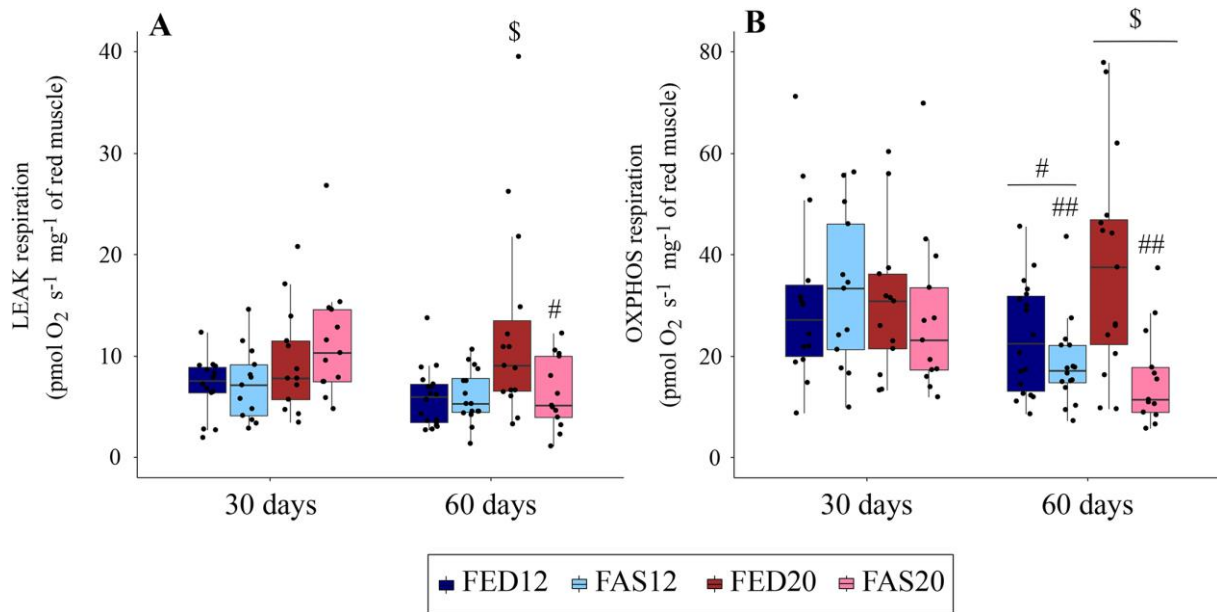


**Fig. 3. Median respiration rates of sardines between 0 and 30 days and between 30 and 60 days, measured by tank respirometry.** Statistics are given according to post-hoc comparisons from the retained model (here the full model: Respiration rates ~ Treatment \* Temperature \* Time). The triangle represents the mean of each group. <sup>\$</sup>Indicates a significant effect of temperature at a same period of time and for a same treatment (<sup>\$</sup> $P < 0.05$ ; <sup>\$\$</sup> $P < 0.01$ ; <sup>\$\$\$</sup> $P < 0.001$ ). \*Indicates a significant effect of food deprivation at a same period of time and at a same temperature (\* $P < 0.05$ ; \*\* $P < 0.01$ ; \*\*\* $P < 0.001$ ). #Indicates a significant effect of time for a same group (# $P < 0.05$ ; ## $P < 0.01$ ; ### $P < 0.001$ ). The dots represent the  $MO_2$  cycles measured and retained for analysis.



**Fig. 4. Relative change in body mass between 0 and 30 days, and between 30 and 60 days in sardines.** All groups are represented, with the fed fish at 12°C (FED12, blue) and 20°C (FED20, red) and the food deprived fish at 12°C (FAS12, green) and 20°C (FAS20, magenta). Statistics are given according to post-hoc comparisons from the retained model (Change in body mass ~ Treatment \* Temperature) after backward selection from the full model. <sup>§</sup>Indicates a significant effect of temperature at a same period of time and for a same treatment (<sup>§</sup> $P < 0.05$ ; <sup>§§</sup> $P < 0.01$ ; <sup>§§§</sup> $P < 0.001$ ). \*Indicates a significant effect of food deprivation at a same period of time and at a same temperature (\* $P < 0.05$ ; \*\* $P < 0.01$ ; \*\*\* $P < 0.001$ ). The dots represent the individuals in each group at each measurement interval.





**Fig. 5. LEAK (A) and OXPPOS (B) respirations of sardines depending on the treatment and period.** The respiration is expressed in pmol O<sub>2</sub> · s<sup>-1</sup> · mg<sup>-1</sup> of red muscle and has been measured at the acclimation temperature of the fish. All groups are represented, with the fed fish at 12°C (FED12, blue) and 20°C (FED20, red) and the food deprived fish at 12°C (FAS12, green) and 20°C (FAS20, magenta) after 30 and 60 days of experiment. Statistics are given according to post-hoc comparisons from the retained model after backward selection from the full model (LEAK respiration ~ Treatment \* Temperature \* Time; OXPPOS respiration ~ Treatment \* Time + Temperature \* Time). <sup>\$</sup>Indicates a significant effect of temperature at a same period of time and for a same treatment (<sup>\$</sup>*P*<0.05; <sup>\$\$</sup>*P*<0.01; <sup>\$\$\$</sup>*P*<0.001). In Panel B, the presence of this sign with a horizontal bar indicates an overall effect of temperature, regardless of the treatment. \*Indicates a significant effect of food deprivation at a same period of time and at a same temperature (\**P*<0.05; \*\**P*<0.01; \*\*\**P*<0.001). #Indicates a significant effect of time (<sup>#</sup>*P*<0.05; <sup>##</sup>*P*<0.01; <sup>###</sup>*P*<0.001). In Panel B, <sup>#</sup> indicates a significant effect of time for a same temperature and the presence of this sign with a horizontal bar indicates an overall effect of time, regardless of the temperature. The dots represent the individuals in each group at each measurement interval.

**Table 1. Survival rate of food deprived and fed fish between 30 and 35 days, and survival rate of refed fish between 30 and 35 days and between 60 and 65 days. The number of surviving fish out of the total number is shown in brackets.**

% of survival	FED12	FED20	FAS12	FAS20
Food deprived or fed fish between 30 and 35 days	100% (31/31)	100% (34/34)	100% (31/31)	92% (25/26)
Refed fish between 30 and 35 days	100% (14/14)	79% (9/11)	82% (12/14)	59% (8/12)
Refed fish between 60 and 65 days	100% (13/13)	93% (13/14)	69% (9/13)	33% (1/3)

**Table 2. Characteristics of fish at euthanasia.** Data shown are mean  $\pm$  sem. <sup>\$</sup>Indicates a significant effect of temperature at a same period of time and for a same treatment (<sup>\$\$</sup> $P < 0.01$ ). Boxes with \$ indicate a global effect of temperature (<sup>\$</sup> $P < 0.05$ ; <sup>\$\$</sup> $P < 0.01$ ; <sup>\$\$\$</sup> $P < 0.001$ ). \*Indicates a global effect of food deprivation (<sup>\*</sup> $P < 0.05$ ; <sup>\*\*</sup> $P < 0.01$ ; <sup>\*\*\*</sup> $P < 0.001$ ). #Indicates an effect of time (<sup>#</sup> $P < 0.05$ ; <sup>##</sup> $P < 0.01$ ; <sup>###</sup> $P < 0.001$ ).

Time	30 days		60 days		30 days		60 days	
Group	FED12	FAS12	FED12	FAS12	FED20	FAS20	FED20	FAS20
N	10 - 14	16 - 17	16 - 18	15 - 16	12 - 13	11 - 13	16	13 - 14
Sex ratio (M/F)	(9/5)	(10/6)	(11/7)	(10/6)	(5/7)	(5/7)	(6/10)	(8/5)
Body mass (g)	13.00 $\pm$ 0.48	12.21 $\pm$ 0.49	13.20 $\pm$ 0.56	11.58 $\pm$ 0.4	13.72 $\pm$ 0.66	10.08 $\pm$ 0.67	12.23 $\pm$ 0.46	9.85 $\pm$ 0.43
Red muscle mass (g)	1.24 $\pm$ 0.08	1.14 $\pm$ 0.08***	1.27 $\pm$ 0.08	1.15 $\pm$ 0.10***	1.09 $\pm$ 0.06	0.79 $\pm$ 0.08***	1.06 $\pm$ 0.07	0.77 $\pm$ 0.08***
Red muscle proportion (%)	9.52 $\pm$ 0.40	9.18 $\pm$ 0.37	9.61 $\pm$ 0.41	9.84 $\pm$ 0.54	8.05 $\pm$ 0.34	7.75 $\pm$ 0.56	8.59 $\pm$ 0.42	7.61 $\pm$ 0.46
White muscle mass (g)	2.41 $\pm$ 0.12	2.25 $\pm$ 0.13	2.60 $\pm$ 0.19	1.94 $\pm$ 0.10	2.81 $\pm$ 0.23	1.54 $\pm$ 0.19 <sup>\$</sup>	2.07 $\pm$ 0.17 <sup>#</sup>	1.37 $\pm$ 0.12
White muscle proportion (%)	18.73 $\pm$ 0.85	18.35 $\pm$ 0.75	19.47 $\pm$ 0.91	16.65 $\pm$ 0.53	20.23 $\pm$ 0.89	14.99 $\pm$ 1.21	16.68 $\pm$ 0.93 <sup>#</sup>	13.68 $\pm$ 0.86
Protein proportion (% in white muscle)	11.19 $\pm$ 0.97	9.89 $\pm$ 0.57***	10.96 $\pm$ 0.55 <sup>#</sup>	7.79 $\pm$ 0.87*** <sup>#</sup>	10.07 $\pm$ 0.95	8.03 $\pm$ 0.71***	9.46 $\pm$ 0.65 <sup>#</sup>	6.41 $\pm$ 0.67*** <sup>#</sup>
Lipid proportion (% in white muscle)	18.50 $\pm$ 0.17	23.91 $\pm$ 0.22	17.48 $\pm$ 0.17	26.16 $\pm$ 0.36	20.78 $\pm$ 0.25	12.10 $\pm$ 0.12 <sup>\$\$\$</sup>	16.64 $\pm$ 0.22	19.37 $\pm$ 0.21 <sup>#</sup>

### **1. *Experimental protocol – Sardines installation and temperature control***

Two sets of four tanks (rectangular tanks 0.55m × 0.65m × 0.60m , useful volume of 90L) were established to receive sardines throughout the food deprivation study. A set constituted water regulated at  $12.49 \pm 0.71^{\circ}\text{C}$  and the other composed of a water at  $19.66 \pm 1.09^{\circ}\text{C}$ . Each tank was covered by a grid (plastic, mesh 10 mm, white or green) to avoid the sardines from escaping, and each pipe allowing the return of water to the pumping tank was protected by netting. In each set, there were two pumping tanks located below the tanks containing fish, one of these pumping tanks supplying the “control” tanks, and the other supplying the “food deprivation” tanks. These pumping tanks received new sea water and returned water from tanks, allowing a water temperature regulation before it is sent to the fish tanks. A pump (NEWA JET600 55L/H) in each tank permitted to send thermostatic water in the fish tanks by pipes (flexible pipes EHEIM [12/16 mm]) whose flow rate could be regulated by a tap (simple tap EHEIM [12mm] ref. 400451). Moreover, each fish tank had a supplementary pump (EHEIM COMPACT 600-600L/H) to ensure mixing of water in absence of water supply, when oxygen uptake was measured.

In the set where tanks were at  $12^{\circ}\text{C}$ , water of the pumping tanks passed through a temperature controller (AQUAVIE, model: ICE 1200) which regulated water temperature before it was sent in fish tanks. In the tanks at  $20^{\circ}\text{C}$ , there was a heating resistance (titanium resistance SCHEGO 300 W) in each pumping tank which permitted to heat water to the desired temperature. These temperatures were measured each day by an electrode measuring temperature and salinity (WTW Cond315i, Germany).

**Table S1. Results obtained on fed fish acclimated at 12 or 20°C and sacrificed during the “0-day” period.**

	12°C	20°C
N	12 - 21	10 - 18
Body mass (g)	14.04 ± 0.54	15.30 ± 0.50
Red muscle mass (g)	1.40 ± 0.10	1.35 ± 0.11
Red muscle proportion (%)	9.96 ± 0.42	9.27 ± 0.60
White muscle mass (g)	2.78 ± 0.21	3.19 ± 0.32
White muscle proportion (%)	19.91 ± 1.20	22.68 ± 1.57
Proteins proportion (% in white muscle)	10.67 ± 0.82	10.03 ± 0.75
Lipids proportion (% in white muscle)	20.71 ± 1.87	27.28 ± 2.77
LEAK respiration (pmol O <sub>2</sub> s <sup>-1</sup> mg <sup>-1</sup> of red muscle)	8.61 ± 2.17	8.84 ± 1.26
OXPPOS respiration (pmol O <sub>2</sub> s <sup>-1</sup> mg <sup>-1</sup> of red muscle)	23.79 ± 4.24	34.73 ± 5.72

**Table S2. Gonad mass and proportion obtained on fed and food-deprived fish acclimated at 12 or 20°C and sacrificed at day-0, day-30 or day-60.**

Period	FED12			FAS12		FED20			FAS20	
	0D	30D	60D	30D	60D	0D	30D	60D	30D	60D
N	21	14	18	16	16	18	12 – 14	16	12 – 13	13 – 14
Gonad mass (mg)	0.56 ± 0.10	0.27 ± 0.06	0.20 ± 0.03	0.20 ± 0.04	0.08 ± 0.01	0.32 ± 0.07	0.07 ± 0.01	0.05 ± 0.01	0.07 ± 0.04	0.03 ± 0.00
Gonad proportion (%)	3.66 ± 0.65	2.20 ± 0.60	1.55 ± 0.26	1.55 ± 0.31	0.68 ± 0.08	2.06 ± 0.44	0.47 ± 0.07	0.37 ± 0.05	0.72 ± 0.43	0.29 ± 0.03

**Table S3. Parameters of the linear mixed-models used in the study.** If the first complete model was simplified according to a stepwise simplification, both complete and selected models are shown.

Tested variable	Effect	Df	F-value	Raw (R) or transformed (T) data	P-value
<b>Respirometry</b>					
<i>Respirometry</i>					
<i>Complete model</i>	Treatment	1	51.33	R	<0.001
	Temperature	1	357.82	R	<0.001
	Time	1	59.96	R	<0.001
	Treatment*Temperature	1	8.77	R	0.003
	Treatment*Time	1	1.76	R	0.186
	Temperature*Time	1	14.71	R	<0.001
	Treatment*Temperature*Time	1	3.73	R	0.055
<b>Biometrics</b>					
<i>Body mass decrease</i>					
<i>Complete model</i>	Treatment	1	147.610	R	<0.001
	Temperature	1	35.510	R	<0.001
	Time	1	9.811	R	0.003
	Treatment*Temperature	1	18.311	R	<0.001
	Treatment*Time	1	0.001	R	0.975
	Temperature*Time	1	0.189	R	0.666
	Treatment*Temperature*Time	1	0.199	R	0.657
<i>Selected model</i>	Treatment	1	152.466	R	<0.001
	Temperature	1	27.836	R	<0.001
	Treatment*Temperature	1	13.591	R	<0.001
<i>Red muscle mass</i>					
<i>Complete model</i>	Treatment	1	12.002	R	<0.001
	Temperature	1	24.036	R	<0.001
	Time	1	0.000	R	0.995
	Treatment*Temperature	1	2.606	R	0.109
	Treatment*Time	1	0.000	R	0.983
	Temperature*Time	1	0.176	R	0.676
	Treatment*Temperature*Time	1	0.021	R	0.883
<i>Selected model</i>	Treatment	1	12.230	R	<0.001
	Temperature	1	24.500	R	<0.001
<i>Red muscle proportion</i>					
<i>Complete model</i>	Treatment	1	0.981	R	0.324
	Temperature	1	23.338	R	<0.001
	Time	1	0.881	R	0.350
	Treatment*Temperature	1	0.969	R	0.327
	Treatment*Time	1	0.000	R	0.993
	Temperature*Time	1	0.067	R	0.797
	Treatment*Temperature*Time	1	0.978	R	0.325

<i>Selected model</i>	Temperature	1	23.55	R	<b>&lt;0.001</b>
<b>White muscle mass</b>					
<i>Complete model</i>	Treatment	1	33.816	R	<b>&lt;0.001</b>
	Temperature	1	10.704	R	<b>0.001</b>
	Time	1	4.934	R	<b>0.028</b>
	Treatment*Temperature	1	5.050	R	<b>0.027</b>
	Treatment*Time	1	0.000	R	0.989
	Temperature*Time	1	2.999	R	0.086
	Treatment*Temperature*Time	1	5.330	R	<b>0.023</b>
<b>White muscle proportion</b>					
<i>Complete model</i>	Treatment	1	18.93	R	<b>&lt;0.001</b>
	Temperature	1	10.489	R	<b>0.002</b>
	Time	1	5.326	R	<b>0.023</b>
	Treatment*Temperature	1	3.378	R	<b>0.069</b>
	Treatment*Time	1	0.031	R	0.861
	Temperature*Time	1	2.536	R	0.114
	Treatment*Temperature*Time	1	3.549	R	<b>0.062</b>
<b>Proteins proportion</b>					
<i>Complete model</i>	Treatment	1	19.860	R	<b>&lt;0.001</b>
	Temperature	1	8.393	R	<b>0.005</b>
	Time	1	4.722	R	<b>0.032</b>
	Treatment*Temperature	1	0.079	R	0.780
	Treatment*Time	1	1.956	R	0.165
	Temperature*Time	1	0.001	R	0.970
	Treatment*Temperature*Time	1	0.170	R	0.681
<i>Selected model</i>	Treatment	1	20.180	R	<b>&lt;0.001</b>
	Temperature	1	8.528	R	<b>0.004</b>
	Time	1	4.799	R	<b>0.031</b>
<b>Lipids proportion</b>					
<i>Complete model</i>	Treatment	1	2.533	T	0.115
	Temperature	1	10.204	T	<b>0.002</b>
	Time	1	0.004	T	0.948
	Treatment*Temperature	1	6.100	T	<b>0.015</b>
	Treatment*Time	1	7.401	T	<b>0.008</b>
	Temperature*Time	1	1.054	T	0.307
	Treatment*Temperature*Time	1	5.189	T	<b>0.025</b>
<b>Mitochondrial respiration</b>					
<b>LEAK respiration</b>					
<i>Complete model</i>	Treatment	1	0.684	T	0.410
	Temperature	1	12.308	T	<b>&lt;0.001</b>
	Time	1	3.667	T	<b>0.058</b>
	Treatment*Temperature	1	1.360	T	0.246
	Treatment*Time	1	3.520	T	<b>0.063</b>
	Temperature*Time	1	0.076	T	0.783
	Treatment*Temperature*Time	1	4.251	T	<b>0.042</b>
<b>OXPHOS respiration</b>					
<i>Complete model</i>	Treatment	1	0.856	R	0.357
	Temperature	1	3.319	R	0.071
	Time	1	4.895	R	<b>0.029</b>
	Treatment*Temperature	1	2.324	R	0.130

Treatment*Time	1	6.360	R	<b>0.013</b>
Temperature*Time	1	3.846	R	<b>0.053</b>
Treatment*Temperature*Time	1	2.299	R	0.132
<i>Selected model</i>				
Treatment	1	0.835	R	0.363
Temperature	1	2.934	R	0.090
Time	1	5.076	R	<b>0.026</b>
Treatment*Time	1	5.897	R	<b>0.017</b>
Temperature*Time	1	3.897	R	<b>0.051</b>