

1 **Title: Telomerase-independent survival leads to a mosaic of complex subtelomere rearrangements**  
2 **in *Chlamydomonas reinhardtii***

3 Frédéric Chaux<sup>1,3</sup>, Nicolas Agier<sup>1,\*</sup>, Clotilde Garrido<sup>1,\*</sup>, Gilles Fischer<sup>1</sup>, Stephan Eberhard<sup>2</sup> and Zhou Xu<sup>1</sup>

4 **Affiliations:**

5 <sup>1</sup>Sorbonne Université, CNRS, UMR7238, Institut de Biologie Paris-Seine, Laboratory of Computational  
6 and Quantitative Biology, 75005 Paris, France

7 <sup>2</sup>Sorbonne Université, CNRS, UMR7141, Institut de Biologie Physico-Chimique, Laboratory of  
8 Chloroplast Biology and Light-Sensing in Microalgae, 75005 Paris, France

9 <sup>3</sup>present address: Laboratory for Marine and Atmospheric Biogeochemistry, Ruđer Bošković Institute,  
10 10000 Zagreb, Croatia

11

12 \*These authors made equal contributions to this work.

13 **Correspondence:** [zhou.xu@sorbonne-universite.fr](mailto:zhou.xu@sorbonne-universite.fr)

14

15 **Keywords:** subtelomere, telomere, genome instability, structural variants, *Chlamydomonas*  
16 *reinhardtii*, post-senescence survivor

17

## 1 Abstract

2

3 Telomeres and subtelomeres, the genomic regions located at chromosome extremities, are essential  
4 for genome stability in eukaryotes. In the absence of the canonical maintenance mechanism provided  
5 by telomerase, telomere shortening induces genome instability. The landscape of the ensuing genome  
6 rearrangements is not accessible by short-read sequencing. Here, we leverage Oxford Nanopore  
7 Technologies long-read sequencing to survey the extensive repertoire of genome rearrangements in  
8 telomerase mutants of the model green microalga *Chlamydomonas reinhardtii*. In telomerase mutant  
9 strains grown for ~700 generations, most chromosome extremities were capped by short telomere  
10 sequences that were either recruited *de novo* from other loci or maintained in a telomerase-  
11 independent manner. Other extremities did not end with telomeres but only with repeated  
12 subtelomeric sequences. The subtelomeric elements, including rDNA, were massively rearranged and  
13 involved in breakage-fusion-bridge cycles, translocations, recombinations and chromosome  
14 circularization. These events were established progressively over time and displayed heterogeneity at  
15 the subpopulation level. New telomere-capped extremities composed of sequences originating from  
16 more internal genomic regions were associated with high DNA methylation, suggesting that *de novo*  
17 heterochromatin formation contributes to restore chromosome end stability in *C. reinhardtii*. The  
18 diversity of alternative strategies to maintain chromosome integrity and the variety of rearrangements  
19 found in telomerase mutants are remarkable and illustrate genome plasticity at short timescales.

20

## 1 Introduction

2

3 Protection of chromosome extremities is essential for genome integrity. For most eukaryotes, it is  
4 achieved by repeated DNA sequences called telomeres and by telomere-bound factors, which  
5 collectively prevent chromosome ends from being processed as DNA damage<sup>1,2</sup>. Telomeres shorten  
6 with each round of replication due to the end replication problem and are in general maintained by  
7 telomerase, a dedicated reverse transcriptase able to elongate telomeres *de novo*. In its absence, some  
8 telomeres eventually reach a critical length that triggers replicative senescence, an arrested state  
9 induced by the DNA damage checkpoint. Replicative senescence was shown in some species to  
10 increase genome instability due to repair attempts and bypass of the checkpoint arrest through the  
11 adaptation to DNA damage process<sup>3-11</sup>. In senescent cells that eventually escape cell cycle arrest, such  
12 as some precursor cancer cells, telomeres become dysfunctional and induce further genomic  
13 instabilities, a phenomenon termed telomere crisis<sup>12,13</sup>.

14 The absence of telomerase therefore generates genome instabilities that stem from telomeres and  
15 take many shapes: point mutations, deletions/insertions, translocations, aneuploidy, duplications and  
16 even more dramatic rearrangements, such as chromothripsis during telomere crisis<sup>7</sup>. The precise  
17 molecular mechanisms underlying these alterations are not all well understood but often involve  
18 classical and alternative non-homologous end-joining (c- and a-NHEJ), homology-directed repair  
19 (HDR), including homologous recombination and break-induced replication (BIR), together with  
20 missegregation of chromosomes, breakage-fusion-bridge (BFB) cycles and other dynamic phenomena  
21 that act in cascades over multiple cell divisions<sup>3-5,7,13-17</sup>.

22 Subtelomeres are the genomic regions adjacent to telomeres and often contain families of paralogous  
23 genes or pseudo-genes, ribosomal DNA (rDNA) arrays, transposable elements and other repeated  
24 sequences<sup>18-24</sup>. Subtelomeres are often involved in telomere-associated rearrangements due to their  
25 repetitive nature promoting HDR, replication fork stalling and template switching (FoSTeS), and BIR<sup>19,25-</sup>

1 <sup>32</sup>. Consistently, subtelomeres evolve rapidly even in closely related species and within species<sup>18,27,33-</sup>  
2 <sup>35</sup>. In some species, in the absence of telomerase, telomeres can be stabilized using the alternative  
3 lengthening of telomeres (ALT) pathway, which depends on homologous recombination and uses  
4 repeated sequences found in telomeres and subtelomeres as substrates<sup>36-39</sup>.

5 Genome alterations, especially structural variations (SVs), initiated by telomere shortening and  
6 dysfunction, despite been widely studied in different models including cancer cells, have been difficult  
7 to map exhaustively due to the complex nature of the rearrangements and the frequent involvement  
8 of repeated sequences such as the ones found in subtelomeres<sup>13,40</sup>. Only recently were long-read  
9 sequencing technologies used to enable the resolution of complex rearrangements at chromosome  
10 extremities, in response to telomere shortening and dysfunction in *Caenorhabditis elegans* and  
11 *Saccharomyces cerevisiae*<sup>41-43</sup>.

12 We recently provided a comprehensive map of all 34 subtelomeres of the unicellular green alga  
13 *Chlamydomonas reinhardtii* (17 chromosomes as haploid, 111 Mb)<sup>24</sup>. All contain arrays of repeated  
14 elements, the most common being the Sultan element, present in 31 out of the 34 chromosome  
15 extremities in a haploid strain, arranged in tandem repeats of up to 46 elements. The basic Sultan  
16 element has a length of ~850 bp and forms class A subtelomeres. The Sultan element of class B  
17 subtelomeres contains additional insertions. Next to most Sultan arrays (29 out of 31), a sequence of  
18 ~500 bp called Spacer is unique to each subtelomere and may serve as promoter for downstream non-  
19 coding RNA genes. The 3 remaining subtelomeres are entirely composed of rDNA, for a total of  
20 approximately 350 copies corresponding to ~3 Mb. Two other repeated elements, called Suber and  
21 Subtile, were found next to Sultan elements at 3 subtelomeres, called class C. The Suber element,  
22 initially named pTANC<sup>44</sup>, contains the most abundant interstitial telomere sequence (ITS) of the  
23 genome. We previously found experimental evidence of telomere-associated genome rearrangements  
24 potentially involving subtelomeres in telomerase mutants of *C. reinhardtii*, correlated with long-term  
25 survival<sup>45</sup>. Indeed, although some telomerase-negative mutant subclones underwent senescence-



1 induced cell death, many managed to survive telomerase absence and must have therefore found a  
2 solution to maintain and protect telomeres. In this work, using long-read Oxford Nanopore  
3 Technologies (“Nanopore”) sequencing able to traverse large repeated regions, we investigated  
4 genome instability in telomerase mutants in *C. reinhardtii* and provide an exhaustive view of the  
5 landscape of genome rearrangements. Our data show that subtelomeres are massively altered by  
6 rearrangements within and between subtelomeres, involving amplification and deletion of repeated  
7 elements (or even entire subtelomeres), fusions, BFB cycles, and other events of high complexity.  
8 Rearrangements occur progressively over time and create a mosaic population of cells which undergo  
9 competition and selection. Telomeres are maintained at a majority of extremities in a telomerase-  
10 independent manner and possibly promote methylation of adjacent DNA to help stabilize chromosome  
11 extremities.

12

## 13 Results

14

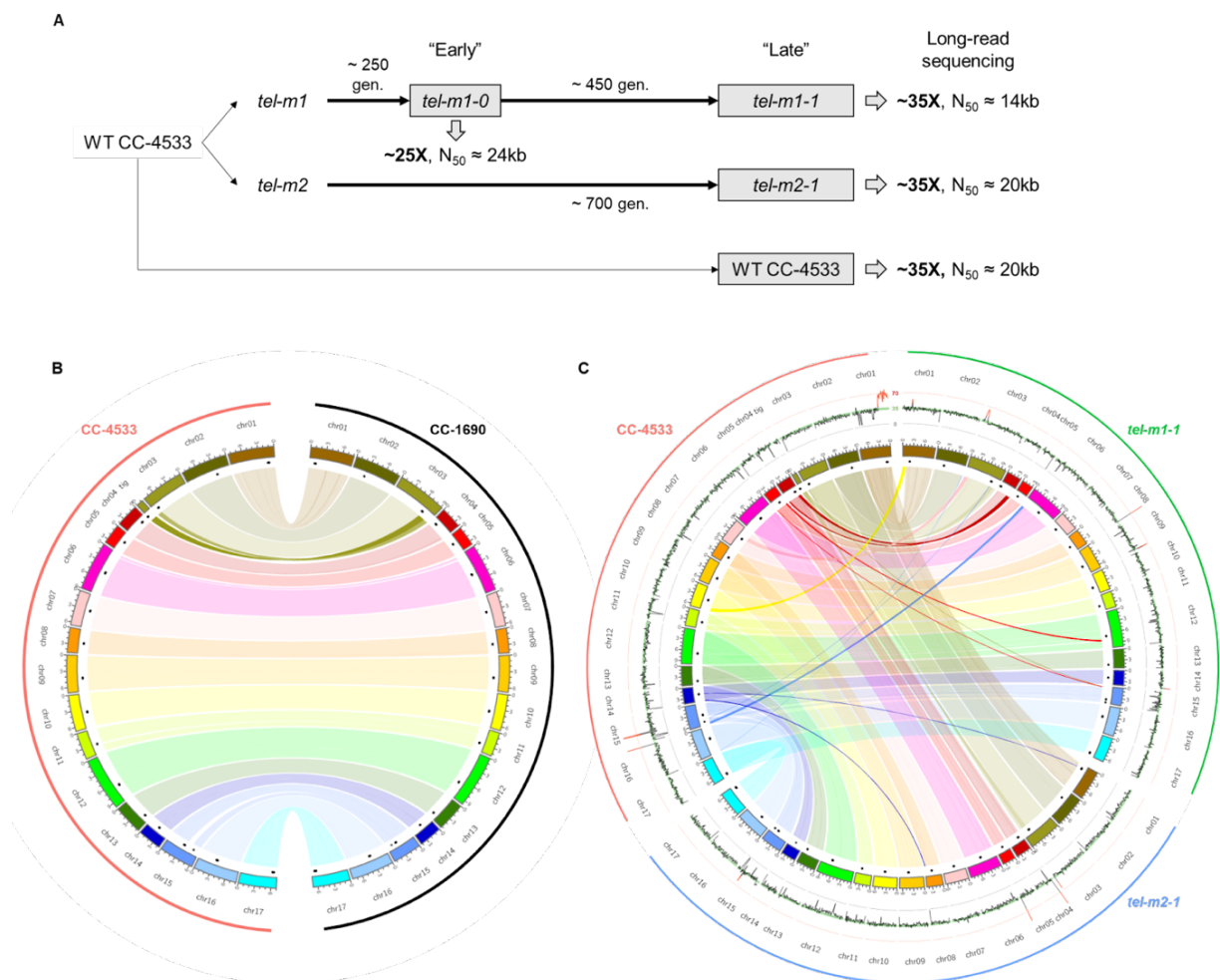
### 15 Long-read Nanopore sequencing of prolonged cultures of telomerase mutants

16 To investigate the genome rearrangements induced by the long-term absence of telomerase, we  
17 cultivated two different telomerase mutant strains, *tel-m1* and *tel-m2* (Fig. 1A). The two mutant strains  
18 were obtained from a library of random insertion mutants<sup>46</sup> and the insertion of the paromomycin  
19 resistance gene in the RNA-binding domain (*tel-m1*) and catalytic domain (*tel-m2*) of *CrTERT*, the gene  
20 encoding the catalytic subunit of telomerase, was confirmed previously<sup>45</sup>. We estimated that the  
21 mutants underwent ~700 generations between creation of the library of mutants in the Jonikas lab  
22 and collection of the samples called *tel-m1-1* and *tel-m2-1*, based on the procedure of transformation,  
23 propagation and freezing described in<sup>46</sup> and our subsequent passages. Additionally, for *tel-m1*, we  
24 collected an earlier sample cultivated for ~250 generations named *tel-m1-0*, which corresponded to  
25 the earliest timepoint we could reasonably obtain upon reception of the strain in our lab. The wild-

1 type strain used to make the library of mutants, CC-4355, was also cultivated upon reception alongside  
2 the mutants, for at least 450 generations.

3 We optimized a CTAB/phenol/chloroform purification protocol followed by a size selection step to  
4 extract and obtain long DNA molecules<sup>47</sup>. We then sequenced the genomic DNA of these 4 samples by  
5 long-read Nanopore sequencing and obtained 4 sets of high-quality reads of N50 > 14 kb and depth >  
6 25X (Supp. Table ST1). We previously proved that long reads allowed the accurate reconstruction of  
7 the highly repeated subtelomere structures in *C. reinhardtii*<sup>24</sup>, which is instrumental for the analysis of  
8 rearrangements potentially implicating telomeres, subtelomeres and other repeated elements.

9



10

11 **Figure 1. Independent genome assemblies of CC-4533 and telomerase mutants *tel-m1-1* and *tel-m2-1* reveal**  
12 **few re-arrangements at the genome assembly level. (A) Experimental setup and main sequencing output. (B-C)**

1 Circos plot<sup>48</sup> of (B) chromosome scaffolds from the long-term culture of CC-4533 as compared to CC-1690 and to  
2 (C) *tel-m1-1* and *tel-m2-1*, shown as colored boxes, with black marks for centromere clusters (composed of the  
3 *Zepp-L1* repeat). Links connect homologous blocks, colored according to CC-4533 chromosomes. Outer plot  
4 displays sequencing depth, averaged over 100 kb regions, with 0X, 35X and 70X grid lines shown in black, green  
5 and red, respectively. Depth over 50X is highlighted in red and genomic position is indicated in megabases.

6

7 The long-read datasets were processed by 3 assemblers, allowing us to generate *de novo* genome  
8 assemblies of CC-4533 and each telomerase mutant (Fig. 1B and C). We reached large chromosome-  
9 scale scaffolds similar to the most contiguous reference genome of CC-1690<sup>49</sup>, to which we compared  
10 our new assembly of CC-4533. Sequencing depth (Fig. 1C, outer circles) indicated a partial duplication  
11 of chromosome 1 in CC-4533 not present in previous sequencing<sup>50</sup>, suggesting that a duplicated mini-  
12 chromosome 1 emerged during the long-term culture in our laboratory, a phenomenon that is quite  
13 common since similar duplications were observed in other laboratory strains<sup>51</sup>. The copy number  
14 variation (CNV) on chromosome 15 and 16 were due to frequently misassembled regions known to  
15 contain repeated sequences<sup>52</sup>. No other chromosome-scale difference was found between CC-4533  
16 and CC-1690 (Fig. 1B). When compared to CC-4533, *tel-m1-1* displayed a number of large-scale SVs  
17 and CNVs, corresponding to translocations and duplications of chromosome extremities (Fig. 1C). The  
18 other mutant, *tel-m2-1*, showed fewer large-scale rearrangements in the assembly, but CNVs were  
19 detected at several locations, suggesting genome alterations. We then used the SV caller MUM&Co<sup>53</sup>  
20 to detect insertions, deletions, duplications, inversions and translocations compared to CC-1690 and  
21 we found similar numbers for CC-4533 and the telomerase mutants assemblies, with about half of SVs  
22 shared by all 3 strains (n = 370 out of a total of 746) (Supp. Fig. S1A and B). The assemblies of the  
23 telomerase mutants displayed a moderate number of unique SVs (n = 52 and 49 for *tel-m1-1* and *tel-*  
24 *m2-1*, respectively), involving sequences of median size < 600 bp.

25 However, we found that the quality of read mapping to subtelomeres was lower than those  
26 corresponding to the core genome both in CC-4533 and in the telomerase mutants (Supp. Fig. S1C),

1 presumably because the repeated elements found at subtelomeres present a challenge for genome  
2 assembly even using long-read sequencing data<sup>54</sup>. Consistently, the assembled genomes reached only  
3 25, 2 and 19 telomeres in CC-4533, *tel-m1-1* and *tel-m2-1*, respectively. We thus suspected that the  
4 assembly-level analysis would miss genome rearrangements affecting chromosome extremities.  
5 Additionally, assemblers were not designed to handle genome heterogeneity at the subpopulation  
6 level, which is likely to be the case in telomerase mutants. We therefore directly looked for genome  
7 alterations at the level of the sequencing reads instead of the assemblies in the rest of this work.

## 8 **Telomere shortening and loss in telomerase mutants**

9 We were first interested in investigating changes related to telomeres. To detect all telomere  
10 sequences at the level of individual reads, we developed a new method called TeloReader that scores  
11 8-mers with respect to their level of identity to any of the canonical 8-mers (TTTTAGGG/CCCTAAAA  
12 and circular permutations) in sliding windows and uses thresholds for the average score to find the  
13 boundaries (see Methods section). TeloReader allowed us to detect all telomere sequences of at least  
14 16 bp, whether they were at a chromosome extremity (terminal) or not (interstitial telomere  
15 sequence, ITS), in the read datasets.

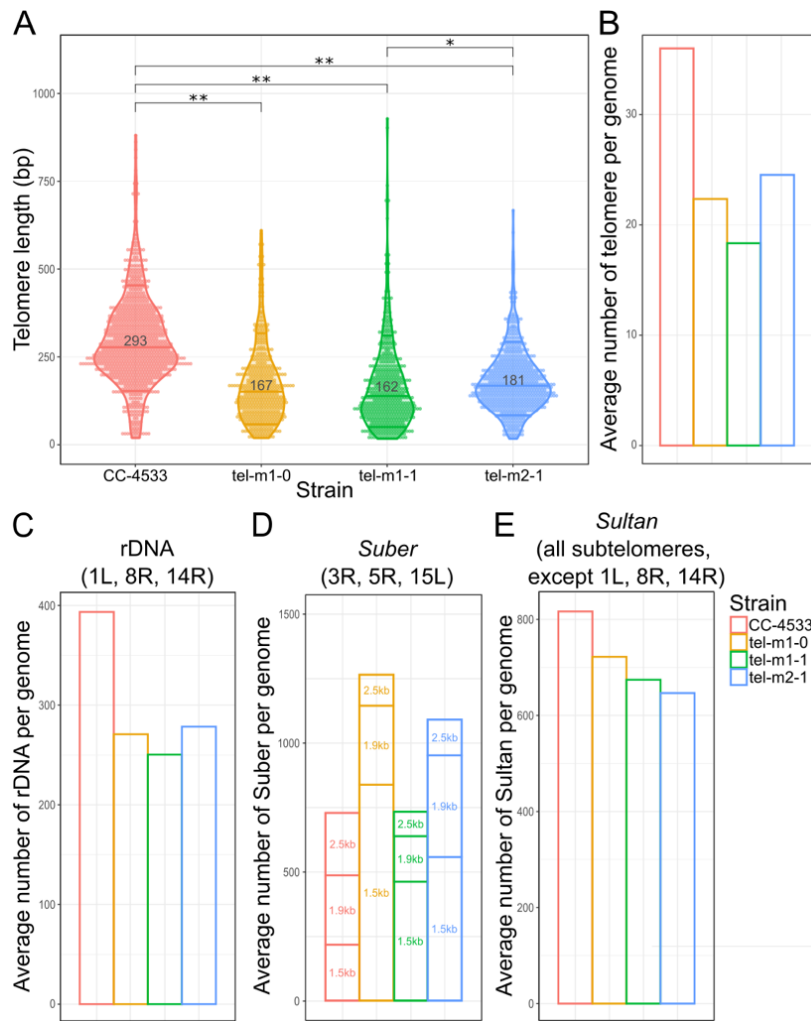
16 We measured the length of all terminal telomere sequences in the wild-type and the mutants reads  
17 and found shorter telomeres in the mutants (CC-4533:  $293 \pm 126$  bp, *tel-m1-0*:  $167 \pm 109$  bp, *tel-m1-*  
18 *1*:  $162 \pm 120$  bp, *tel-m2-1*:  $181 \pm 88$  bp; Fig. 2A). Telomeres were already short in the *tel-m1-0* sample  
19 and their length did not further decrease in the *tel-m1-1* sample, suggesting the stabilization of  
20 telomere length by telomerase-independent mechanisms or *de novo* telomere formation after  
21 complete loss. Because we suspected that the aggregate length distribution measurement would mask  
22 telomere length dynamics at each extremity, we assigned the reads containing a terminal telomere to  
23 a specific chromosome arm based on the presence of specific and unique Sultan elements in the reads  
24 and measured telomere length distribution for each Sultan-associated extremity (Supp. Fig. S2). Out  
25 of the 27 studied class A and B extremities, 8 showed telomeres further shortening between *tel-m1-0*

1 and *tel-m1-1*, with large variations in the rate of shortening. Interestingly, they were stabilized or even  
2 slightly increased in length between *tel-m1-0* and *tel-m1-1* in 16 cases, indicating a telomerase-  
3 independent mechanism of telomere maintenance or *de novo* formation. In the remaining 3  
4 extremities, the very low or even absence of reads in *tel-m1-0* and/or *tel-m1-1* prevented comparison  
5 and suggested the loss of the entire telomere or subtelomere sequence. Telomere length distribution  
6 at each extremity also displayed variations in *tel-m2-1*.

7 To test if a subset of telomeres were completely lost, we computed the total number of telomere-  
8 containing reads normalized to the sequencing depth of the nuclear genome and found that the  
9 average number of telomeres per cell was smaller in the mutants: 22 in *tel-m1-0*, 18 in *tel-m1-1* and  
10 25 in *tel-m2-1* vs 36 in CC-4533 (which has an extra mini-chromosome 1 in addition to the 17  
11 chromosomes) (Fig. 2B).

12 Overall, telomeres shortened as expected in telomerase mutants but our data revealed the  
13 heterogeneity of shortening pattern at each specific telomere and suggested that telomeres were  
14 maintained or newly formed in *tel-m1-1* as compared to *tel-m1-0* in a telomerase-independent  
15 manner. In the next sections, we investigated changes and chromosomal rearrangements occurring at  
16 subtelomeric regions.

17



1

2 **Figure 2. Telomere length distribution and CNVs of subtelomeric elements.** (A) Telomere length distribution of  
 3 terminal telomere sequences detected by TeloReader from the reads dataset in CC-4533 and 3 telomerase  
 4 mutant samples. \* and \*\* indicate statistically significant difference with p-value =  $6.8 \times 10^{-9}$  and p-value <  $2.2 \times$   
 5  $10^{-16}$ , respectively, using a non-parametric Kruskal-Wallis test. (B) Number of telomeres in reads normalized by  
 6 the sequencing depth. (C-E) CNVs for repeated elements normally found at subtelomeres including (C) the rDNA,  
 7 (D) the Suber elements subdivided into 3 types according to their length (“1.5kb”, “1.9kb” and “2.5kb”), and (E)  
 8 the Sultan elements.

9

## 10 Copy number variations of subtelomeric elements in telomerase mutants

11 As a first insight into the stability of repeated subtelomeric elements (rDNA, Suber and Sultan), we  
 12 computed their CNVs in telomerase mutants compared to CC-4533.

1 We used the rDNA sequence as a query to find all reads containing rDNA. We observed an overall  
2 decrease of 31%, 36% and 29% in rDNA copy number in *tel-m1-0*, *tel-m1-1* and *tel-m2-1*, respectively,  
3 compared to CC-4533 (Fig. 2C). We also found that, while in the wild-type, it was exclusively found at  
4 3 subtelomeres as expected<sup>24</sup>, rDNA could be mapped at several additional regions of the genome in  
5 telomerase mutants, implicating rDNA in genome rearrangements (see below). The two major rDNA  
6 clusters at subtelomeres 8R and 14R likely lost a large fraction of their rDNA copies.

7 The same analysis was performed with the Suber element, which is found as 3 main subtypes of sizes  
8 ~1.5 kb, ~1.9 kb and ~2.5 kb<sup>24,44</sup>, and showed changes specific to each subtype (Fig. 2D). The copy  
9 number of the 1.5 kb element was greatly increased in the telomerase mutants compared to wild-type,  
10 especially in *tel-m1-0*, in contrast to the 2.5 kb element which decreased in copy number in all mutants.  
11 The number of 1.9-kb elements only decreased in *tel-m1-1*. Given the organization of Subers in arrays  
12 containing only one subtype<sup>24</sup>, the different changes in copy number depending on the subtype likely  
13 reflected duplicated, deleted and potentially rearranged arrays.

14 Finally, the Sultan element, the most abundant and widespread repeated element in subtelomeres,  
15 was decreased in copy number in both telomerase mutants (Fig. 2E). In the next sections, we  
16 investigate in more detail what this decrease entails at the level of each chromosome extremity.

17 Overall, all the main subtelomeric repeated elements showed CNVs in the telomerase mutants,  
18 indicating that subtelomeres are involved in telomere-induced chromosome rearrangements.

19

## 20 **Contraction, erosion and expansion of Sultan arrays**

21 To analyze subtelomere structure, we looked for the presence of the Spacer element in all reads  
22 because this element is present as a single copy in 29 out of 34 subtelomeres in the wild-type strain,  
23 with sufficient sequence differences to uniquely identify the corresponding subtelomere<sup>24</sup>. Reads  
24 containing a Spacer element were thus grouped according to their Spacer (Supp. Dataset 1).

1 While for all Spacers, reads from CC-4533 were consistent with a subtelomeric structure identical or  
 2 near-identical to the one we inferred from the genome assembly of CC-1690<sup>24</sup> (Fig. 3, Supp. Dataset  
 3 1), reads from the telomerase mutants revealed many differences compared to CC-4533, including a  
 4 striking variety of rearrangements (Table 1 and Supp. Dataset 1).

5

	<i>tel-m1-0</i>	<i>tel-m1-1</i>	<i>tel-m2-1</i>
Similar to WT	9	7	9
Absence of Spacer	1	1	3
Contraction of stabilized Sultan array	3	1	5
Unstable Sultan array	3	3	4
Expansion of stabilized Sultan array	1	0	1
Fusion between Sultan arrays (total):	13	17	3
- Same orientation	3	5	1
- Inverted orientation	10	12	2
Recruitment of rDNA	4	5	1
Recruitment of other sequences	3	4	2
BFB	4	5	0
Chromosome circularization	1	1	0
Heterogeneous subpopulations	7	9	4

6

7 **Table 1. Summary of rearrangements classified by types, found at Spacer-containing subtelomeres.** The  
 8 number of the described rearrangements/events found at Spacer-containing subtelomeres, compared to CC-  
 9 4533, is indicated. For subtelomeres with reads that represented multiple subpopulations (“Heterogeneous  
 10 subpopulations”), the rearrangements/events of each subpopulation were counted. Only rearrangements  
 11 supported by at least two reads were counted.

12

13 We first focused on subtelomeres composed, in CC-4533, of an array of Sultan elements as the only  
 14 repeated element, which are the vast majority<sup>24</sup> (class A and B, 27 subtelomeres out of 34). In CC-4533,  
 15 at each class A/B Sultan subtelomere, the reads were consistent with a single population of  
 16 subtelomeres with a fixed number of Sultans and capped by telomeres, as supported by a majority of  
 17 reads (Fig. 3A and D). Reads that did not reach the extremity of the chromosome were due to DNA  
 18 molecules physically broken during the extraction and preparation procedure and would be expected  
 19 to terminate at random position in the Sultan array and within a Sultan element, which we confirmed



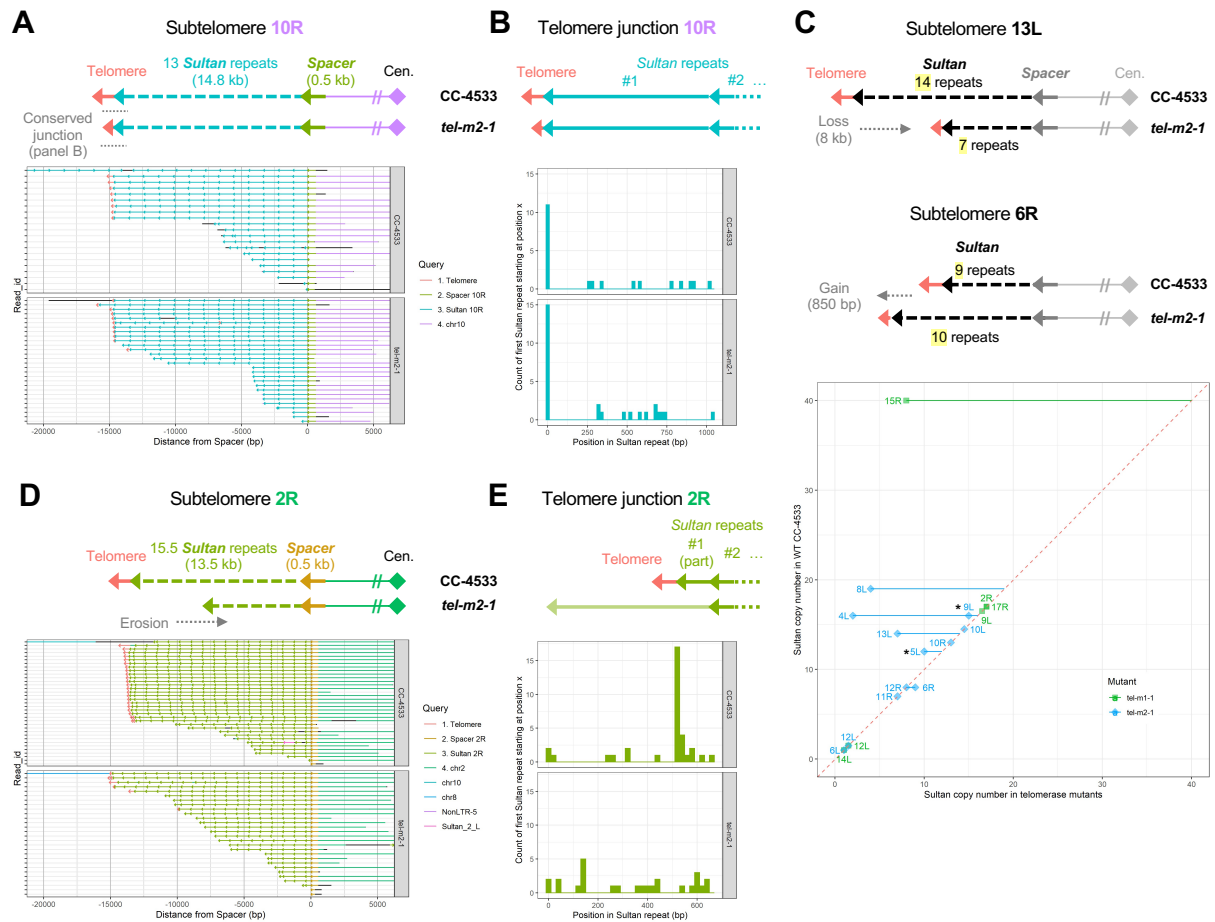
1 (Fig. 3B and E). Additionally, in CC-4533, all reads containing a specific Sultan element and telomere  
2 sequence could be retrieved and their number was often close to the number of Spacer-containing  
3 reads (Supp. Fig. S3A), consistent the fact that Spacer-containing reads did not always reach a telomere  
4 sequence because of the physical breakage of the extracted DNA molecule. Interestingly, both  
5 telomerase mutants frequently showed reads that also supported a fixed number of Sultans (Fig. 3A  
6 and C). We call such subtelomeres “stabilized Sultan arrays”. However, the number of Sultan elements  
7 could differ from CC-4533 (Fig. 3C): in *tel-m1-1* and *tel-m2-1* combined, we observed a decreased  
8 number of Sultans in 6 cases by 2-32 repeats, and in 1 case on the contrary, the number of Sultan  
9 element was slightly increased by 1. For the rest of the cases (n = 11), no variation of the number of  
10 Sultans was observed. We found that stabilized Sultan arrays in telomerase mutants were capped by  
11 short telomere sequences (Fig. 3A and Supp. Fig. S3A), suggesting that these telomeres were  
12 maintained in a telomerase-independent manner.

13 We then asked whether at the extremities of stabilized Sultan arrays, the telomeres could be  
14 established *de novo* after complete loss or whether Sultan elements were excised or amplified  
15 internally independently of the initially present telomere. To address this point, we identified the  
16 junction between the telomere sequence and the last Sultan element and compared it between CC-  
17 4533 and the mutants (Fig. 3B and Supp. Fig. S3B). In 4 out of 18 stabilized Sultan arrays in the two  
18 mutants combined, we found that telomeres transitioned into the Sultan element at a different  
19 position within the Sultan compared to CC-4533, indicating that the telomeres were added *de novo* on  
20 truncated Sultans (Supp. Fig. S3A and B). In the rest (14 out of 18), telomeres were found at the same  
21 position of the last Sultan in CC-4533 and the mutants, suggesting that changes in the number of Sultan  
22 elements of the array might also be due to excision of internal Sultan elements, without affecting the  
23 last Sultan.

24 At some subtelomeres (3 for *tel-m1-1* and 6 for *tel-m2-1*), the reads were not consistent with a  
25 stabilized number of Sultan elements, and the vast majority had different counts, suggesting a

1 heterogeneous population of cells in which that specific extremity shortened progressively. These  
2 Sultan arrays were qualified as “unstable”. This situation is exemplified by subtelomere 2R in *tel-m2-1*  
3 (Fig. 3D). Consistent with a progressive erosion of the extremity, the last Sultan element ended at  
4 different positions of the Sultan element in different reads and was often not capped by telomeres  
5 (Fig. 3E and Supp. Fig. S3A and B). To rule out that these reads containing a variable number of Sultan  
6 elements were not simple due to physically broken DNA molecules, we searched for all reads  
7 containing the same Sultan elements and telomeres and compared their number with the number of  
8 reads containing the corresponding Spacer (Supp. Fig. S3A). In contrast to CC-4533, unstable Sultan  
9 arrays in the mutants showed fewer telomere-containing reads than Spacer-containing ones,  
10 indicating telomere loss and supporting the idea that these extremities truly ended with Sultan  
11 elements. The progressive loss of telomere repeats and Sultan element was consistent with the overall  
12 decrease in the number of telomeres and Sultan copy number (Fig. 2B and E). Erosion of Sultan arrays  
13 would eventually lead to their complete loss, a situation that we could clearly evidence for  
14 subtelomere 7L (Supp. Fig. S3C): in *tel-m1-0*, the subtelomere contained only 3 Sultans, compared to  
15 8 in CC-4533, but in *tel-m1-1* the extremity was eroded beyond the Spacer and a new telomere was  
16 formed with the additional translocation, in a subpopulation of reads, of a sequence from chromosome  
17 11 which had a microhomology to the telomere sequence (Supp. Fig. S3D and E). Interestingly, an  
18 analogous comparison between CC-4533, *tel-m1-0* and *tel-m1-1* for the class C subtelomere 15L  
19 tended to suggest that Suber arrays could also be progressively eroded until completely lost (Supp. Fig.  
20 S3F).

21



1  
2 **Figure 3. Contraction, erosion and expansion of Sultan arrays.** (A) The stabilized 10R Sultan array of *tel-m2-1*  
3 capped by a telomere sequence is depicted in comparison to CC-4533. Raw Nanopore reads, colored based on  
4 the element (as indicated in the legend; black segments correspond to sequences that did not align to any of the  
5 selected queries) and anchored at the Spacer, are shown. (B) For each read, the starting position of the Sultan  
6 element adjoining the telomere sequence is recorded and the overall distribution of counts over the length of a  
7 Sultan element is represented. (C) Schematic representation of contraction and expansion of stabilized Sultan  
8 arrays (upper part) and overall changes in Sultan number in stabilized Sultan arrays for *tel-m1-1* and *tel-m2-1*  
9 (lower part). (D) Same as (A) with the unstable 2R Sultan array of *tel-m2-1* mostly uncapped by telomeres. (E)  
10 Same as (B) but for the unstable 2R Sultan array of *tel-m2-1*.

## 12 Complex rearrangements within and between subtelomeres

13 In telomerase mutants, we observed a striking fraction of telomere-containing reads with unusual  
14 combinations of subtelomeric elements (Table 1 and Supp. Dataset 1). To better characterize the

1 structure of these rearranged subtelomeres, we again used the Spacer-based analysis to help anchor  
2 the reads to a given chromosome extremity.

3

#### 4 *Fusion between subtelomeric elements*

5 Fusions of elements from different subtelomeres were the most frequent genome rearrangement  
6 occurring at subtelomeres (Table 1). The simplest type corresponded to the juxtaposition of two or  
7 more arrays of different Sultan elements, either in the same or in reverse orientations, such as  
8 subtelomere 6R in *tel-m1-0* (Fig. 4A) or subtelomere 15R in *tel-m2-1* (Supp. Fig. S4A). Multiple  
9 subtelomeric elements of different types, such as rDNA and Sultan in subtelomere 6L of *tel-m1-0* and  
10 *tel-m1-1*, were also observed (Fig. 4B and Table 1). Because rDNA and Sultan do not share sequence  
11 homology, we speculate their fusion stemmed from NHEJ-dependent translocation events or end-to-  
12 end fusion.

13 The complexity of the observed genome rearrangements suggested that they formed through a  
14 multistep process. To test this hypothesis, we compared the rearrangements found in *tel-m1-0* to  
15 those in *tel-m1-1*, as these two samples were collected with a ~450-generation delay. We could find  
16 intermediate rearrangement states in the earlier *tel-m1-0* sample, suggesting that at least some  
17 complex rearrangements were formed in multiple steps over time (Fig. 4B and C; Supp. Fig. S3C and  
18 S4B). For example, at subtelomere 6L, the already complex structure found in *tel-m1-0* further changed  
19 in *tel-m1-1* and diverged into two structurally distinct subpopulations (Fig. 4B). As another example,  
20 subtelomere 17L displayed a reduced number of Sultan elements in *tel-m1-0* compared to wild-type  
21 with a subpopulation of reads capped by telomeres, representing a short stabilized Sultan array, but  
22 contained additional sequences from a (CA)<sub>n</sub> microsatellite, from chromosome 15 and from 5R Sultan  
23 elements, fused to the remaining 17L Sultans in *tel-m1-1* (Fig. 4C).

24

## 1 *Signature of BFB events*

2 The read coverage mapped to the assembly of *tel-m1-1* genome identified a duplicated region at the  
3 extremity of chromosome 9R ([Fig. 4D, upper part](#)). Closer inspection of the reads anchored by their  
4 Spacer element revealed a pattern of 2 inverted Sultan arrays fused to each other in a head-to-head  
5 manner ([Fig. 4D, middle part](#)). All Sultan elements could be attributed to subtelomere 9R  
6 unambiguously. Each array was adjacent to its own 9R Spacer element as well as downstream 9R-  
7 specific sequences. Overall, this configuration was indicative of a fusion between sister chromatids  
8 followed by a breakage in anaphase, an event that initiated a canonical breakage-fusion-bridge cycle  
9 until the extremities were stabilized. We then looked for the new 9R extremity in *tel-m1-1* and  
10 identified the reads that mapped close to the 1X/2X coverage boundary. Strikingly, reads that mapped  
11 only to the 2X side continued with at least two rDNA units over >15 kb ([Fig. 4D, lower part](#)). The rDNA  
12 sequence disrupted a RTE<sub>X</sub>-1 long interspersed nuclear element (LINE) retrotransposon framed by two  
13 arrays of MSAT-4B satellites, as shown in [Fig. 4D](#). What lay beyond the rDNA array remained unknown,  
14 in particular whether the extremity was capped by additional telomere sequences. In another example,  
15 the structure of the 11R extremity of *tel-m1-0* was consistent with at least two cycles of BFB, based on  
16 the multiple inverted repeats ([Supp. Fig. S4C](#)). We found a total of 5 events consistent with BFB in *tel-*  
17 *m1-1* ([Table 1](#)), indicating that BFB cycles were a common mechanism at play once telomeres became  
18 too short or were lost.

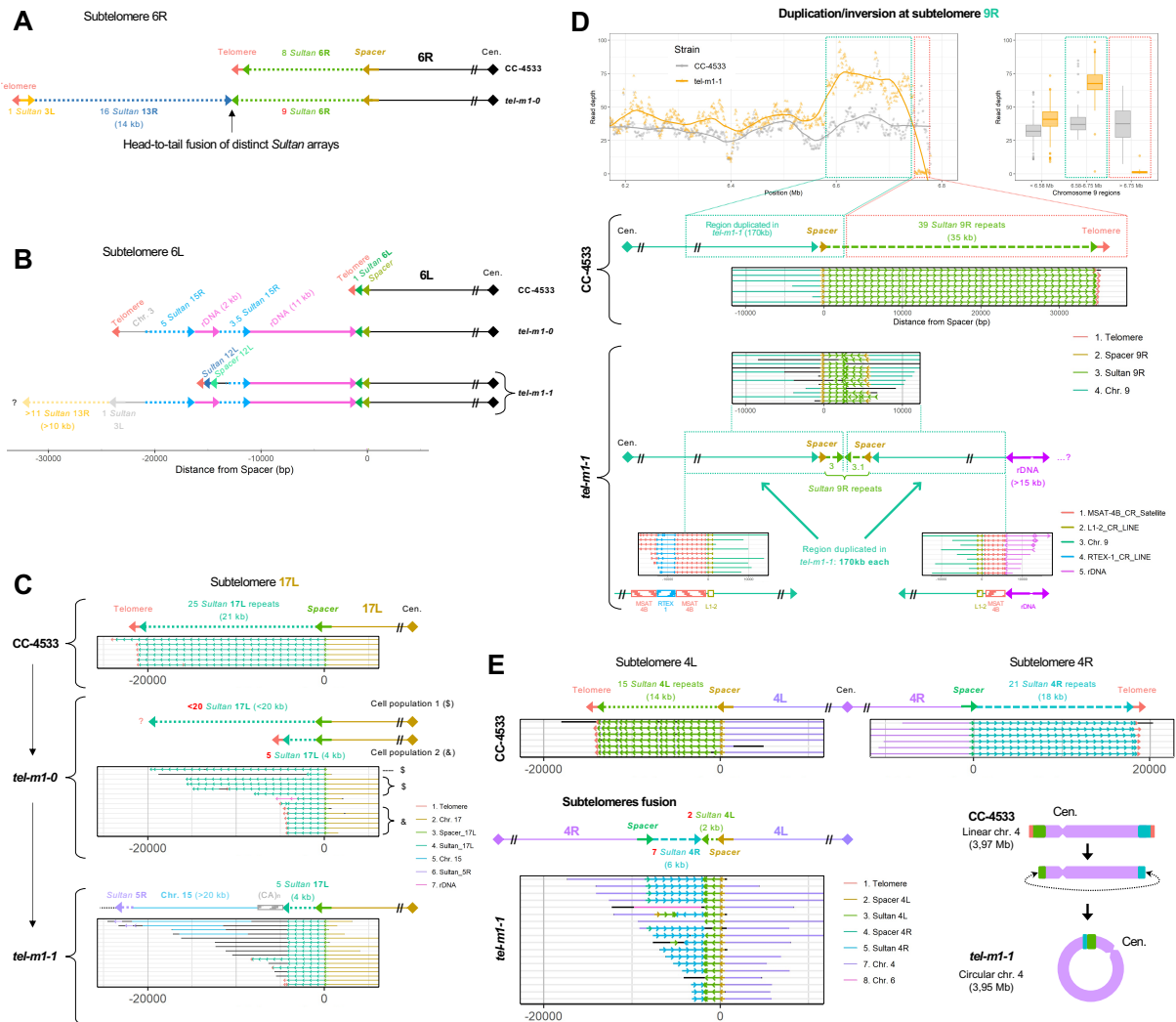
19

## 20 *Circularization of chromosome 4*

21 We report the head-to-head fusion of subtelomeres 4L and 4R in *tel-m1-1*, after complete loss of the  
22 telomere sequences and partial loss of Sultan elements (from 15 to 2 for 4L and from 21 to 7 for 4R)  
23 ([Fig. 4E](#)). The *de novo* assembly of chromosome 4 in *tel-m1-1* without relying on scaffolding with a  
24 reference sequence indicated that chromosome 4 was made of a single contig with no extremity and

1 had therefore a circular structure (Supp. Fig. S4D-E). Circularization of the chromosome bypasses the  
 2 need for functional telomeres to stabilize the extremities of linear chromosomes.

3



4

5 **Figure 4. Complex genome rearrangements at subtelomeres.** (A) Schematic representation of subtelomere 6R

6 where, in *tel-m1-0*, 2 additional Sultan arrays were fused to the initial Sultan array in inverted orientation. (B)

7 Schematic representation of complex rearrangements at subtelomere 6L in *tel-m1-0* and *tel-m1-1* involving

8 Sultan elements from different subtelomeres and rDNA sequences. In *tel-m1-1*, 2 subpopulations of reads reveal

9 2 distinct structures stemming from the initial rearrangement found in *tel-m1-0*. (C) Schematic representation of

10 the dynamics of rearrangements at subtelomere 17L between CC-4533, *tel-m1-0* and *tel-m1-1*. The structure of

11 the subtelomere in *tel-m1-1* appeared to have evolved from the structure in cell population 2 of *tel-m1-0*. (D)

12 Signature of a BFB event at subtelomere 9R in *tel-m1-1*. (Upper part) Duplication of the last 170 kb of the

1 chromosome end. (*Middle part*) Individual reads supporting the loss of telomeres and 36 Sultan elements, and  
2 the end-to-end fusion of the 9R sister chromatids. (*Lower part*) Reads showing the recruitment of > 15 kb of rDNA  
3 sequences at the new 9R extremity, disrupting an array of MSTA-4B satellite sequences. Black segments  
4 correspond to sequences that are not aligned to any of the selected queries. (E) Representation of reads  
5 supporting the fusion of subtelomeres 4L and 4R in *tel-m1-1*, after complete loss of telomeres and a total of 27  
6 Sultan elements. (Lower right) Scheme of the inferred circularization of chromosome 4, also supported by *de*  
7 *novo* genome assembly ([Supp. Fig. S4D-E](#)). Black segments correspond to sequences that are not aligned to any  
8 of the selected queries.

9

## 10 **New telomeres outside canonical subtelomere regions lead to drastic karyotype** 11 **alterations**

12 We next investigated terminal-telomere-containing reads not associated with the canonical  
13 subtelomeric elements, with the aim of revealing the formation of new extremities outside their  
14 normal subtelomeric contexts. Using TeloReader, we gathered all reads containing telomere  
15 sequences that were not associated to known subtelomeric elements (*Sultan*, *Spacer*, *Suber*, *Subtile* or  
16 rDNA). We mapped these reads on the genome of CC-4533 and found such subtelomere-less telomeres  
17 at 3 and 2 locations in *tel-m1-1* and *tel-m2-1*, respectively. Consistently with the genome assembly, we  
18 also detected the new telomere extremity of the duplicated mini-chromosome 1 from CC-4533, which  
19 transitioned directly into the chromosome 1 sequence through a microhomology and without  
20 subtelomeric element nor other exogenous sequence ([Supp. Fig. S5A](#)).

21 At subtelomeres 14L in *tel-m2-1* and 7L in *tel-m1-1* ([Fig. 5A](#), [Supp. Fig. S3C-E](#)), telomeres connected to  
22 the chromosome arm several kilobases away from the expected telomere location in CC-4533, and the  
23 corresponding arrays of *Sultan* repeats were lost, but without loss of annotated genes. At these novel  
24 telomere junctions, the chromosome arm showed no sequence homology with telomeres, suggesting  
25 that the telomere was recruited at these sites by non-homologous end joining rather than homology-

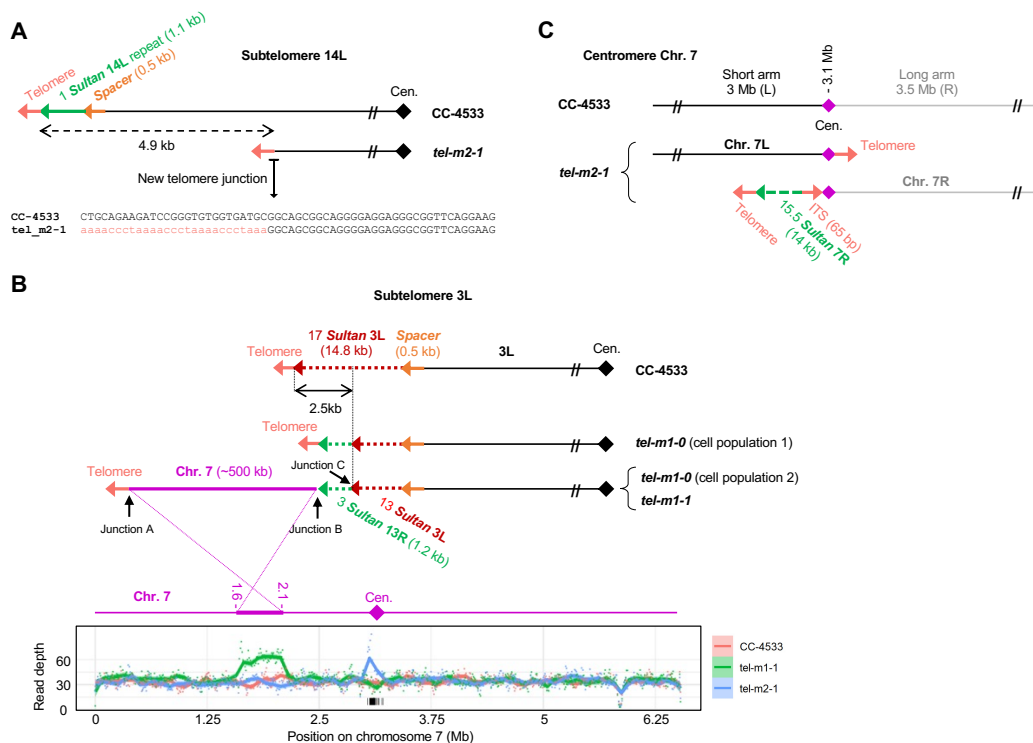
1 mediated mechanisms. At subtelomere 7L in *tel-m1-1*, a minor population of reads showed an  
2 additional fragment from chromosome 11 next to the new telomere, with a 4-bp microhomology at  
3 the junction (Supp. Fig. S3D). The resulting interstitial telomeric sequence was shorter than the  
4 telomeres observed in the main population of reads (Supp. Fig. S3E).

5 The other new telomeres were involved in more complex rearrangements. The subtelomere 3L of *tel-*  
6 *m1-0* had 13 Sultan elements remaining after loss of the telomere sequence and 4 Sultan elements,  
7 followed by a short array of 13R Sultan elements and telomere sequence (Fig. 5B). In a subpopulation  
8 of *tel-m1-0* reads and in *tel-m1-1*, this structure was further altered by the loss of the telomere and  
9 the fusion of 500 kb of duplicated sequence originally located at 2.1 Mb from the end of the left arm  
10 of chromosome 7, and capped by a new telomere (Fig. 5B). Junctions to telomeres (junction A) and to  
11 the 13R Sultan array (junction B) involved micro-homologies of 2-4 bp (Supp. Fig. S5B and C), while the  
12 Sultans from 13R and 3L were connected with the insertion of a short sequence of unknown origin  
13 (junction C) (Supp. Fig. S5D), but without homology nor truncation of the neighboring Sultan elements.  
14 On chromosome 12 of *tel-m1-1*, the 2-Mb distal part of the right arm was translocated to the  
15 subtelomere 5L and the new right end of chromosome 12 (at 7.7 Mb from its initial extremity) carried  
16 telomeres preceded by a tandem duplication consisting of a fragment from chromosome 12, 9  
17 telomeric repeats forming an interstitial array and a short Sultan array from subtelomere 7L (Supp. Fig.  
18 S5E).

19 In *tel-m2-1*, new telomeres were found at two close locations around the centromere of chromosome  
20 7, at the extremities of a 90-kb region displaying a 2X sequencing depth, indicating that the centromere  
21 was duplicated and the two arms of chromosome 7 split into two telocentric chromosomes (Fig. 5C),  
22 thus constituting a Robertsonian fission, the reciprocal event of a Robertsonian fusion whereby two  
23 telocentric chromosomes are combined through their long arm with the loss of the very short arms  
24 and one centromere<sup>55,56</sup>. On the left end of the right arm, the new telomere capped an array of Sultan



1 7R lacking Spacer and a 65-bp ITS. On the right end of the left arm, the new telomere directly  
 2 transitioned into the centromere.  
 3 Overall, duplications, non-reciprocal translocations, deletions and more complex rearrangements  
 4 created new extremities outside canonical regions and altered the karyotype of the telomerase mutant  
 5 strains. For each new extremity, stability seemed to be ensured by newly recruited telomere  
 6 sequences.  
 7



8  
 9 **Figure 5. New extremities without canonical subtelomeric elements.** (A) Scheme of the loss of 4.9 kb  
 10 of sequence and formation of a new telomere at subtelomere 14L of *tel-m2-1*. The new junction  
 11 sequence is shown. (B) Scheme of the complex new 3L extremity in *tel-m1-0* and *tel-m1-1*. The  
 12 sequencing depth for chromosome 7 is shown, revealing the duplicated 500-kb region in *tel-m1-1*. The  
 13 sequences of Junction A, B and C are shown in [Supp. Fig. S5B-D](#). (C) Scheme of the Robertsonian fission  
 14 that occurred on chromosome 7 of *tel-m2-1*. The new centromere-proximal extremities were stabilized  
 15 by telomeres, with in addition a Sultan array and an ITS for the 7R long arm.

1

## 2 **DNA methylation is maintained at chromosome extremities and at displaced Sultan arrays**

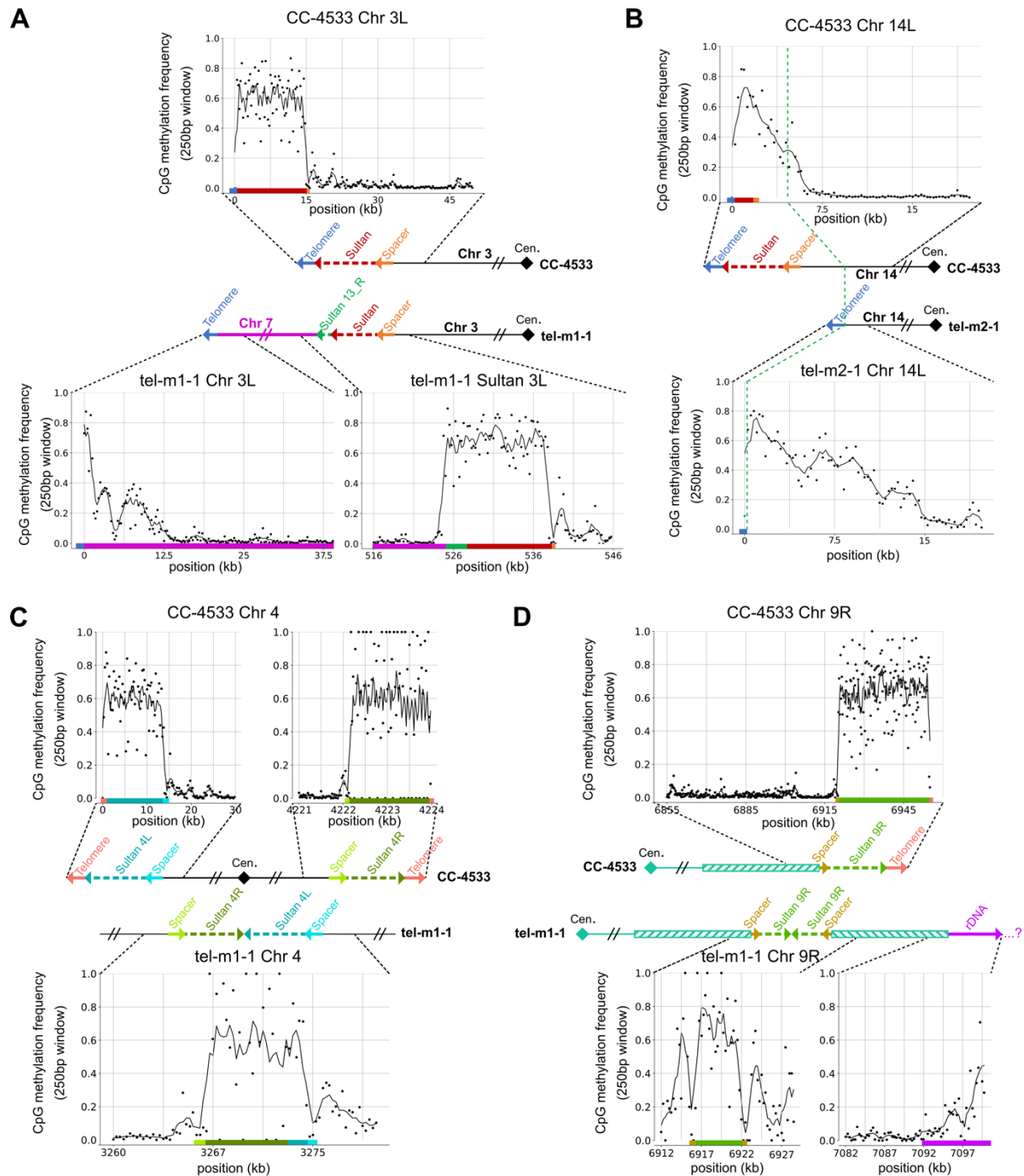
3 We previously showed that Sultan arrays and to a lesser degree, Suber arrays, were hypermethylated,  
4 whereas the two major rDNA clusters were hypomethylated except for a few telomere-proximal  
5 repeats<sup>24</sup>. Sultan subtelomeres are also associated with the heterochromatin mark H3K9me1<sup>57</sup>. Since  
6 subtelomeres in telomerase mutants were heavily rearranged, we asked whether DNA methylation  
7 remained associated with the Sultan elements that were no longer close to chromosome extremities  
8 and whether new extremities would acquire hypermethylation.

9 We thus basecalled 5-methylcytosines (5mC) at CpG sites using Nanopolish<sup>58</sup> and focused on  
10 rearranged loci. We first investigated the complex rearrangement found at extremity 3L of *tel-m1-1*  
11 where a duplicated 500 kb of chromosome 7 capped with telomere formed the new extremity and the  
12 original 3L Sultan elements were thus located much more internally (> 500 kb) in the chromosome (Fig.  
13 5B). To analyze 5mC content of the new extremity, we selected reads that aligned to the 500 kb of  
14 chromosome 7 and at the same time contained the terminal telomere sequence, and in a second  
15 control group, reads that aligned to the 500 kb region but also continued beyond on chromosome 7  
16 (Fig. 6A and Supp. Fig. S6A). Strikingly, the new 3L extremity was highly methylated over a length of  
17 ~12 kb, whereas the same sequence on its original locus on chromosome 7 was unmethylated, and so  
18 was the same locus on the wild-type strain (Supp. Fig. S6A). The 3L Sultan elements as well as the  
19 neighboring 13R Sultans in *tel-m1-1* maintained their high methylation status despite being now > 500  
20 kb away from the extremity.

21 That new extremities were hypermethylated even though they did not contain canonical subtelomeric  
22 sequences was confirmed at the truncated 14L extremity of *tel-m2-1* (Fig. 5A and 6B) and 7L of *tel-m1-*  
23 *1* (Supp. Fig. S6B). Other examples of Sultan elements no longer located at subtelomeres but still  
24 methylated included the 4L and 4R Sultan elements of the circularized chromosome 4 in *tel-m1-1* (Fig.  
25 4E and 6C) and the head-to-head fused 9R Sultan elements, which resulted from the BFB event we

1 described in a previous section (Fig. 4D and 6D). In the latter example, the Sultan elements were  
2 located at least 185 kb away from the new extremity. The reads mapping to the rDNA sequence at the  
3 9R subtelomere showed that the rDNA was methylated (Fig. 6D), which in CC-1690 was only true for  
4 the rDNA of subtelomere 1L and a few telomere-proximal rDNA sequences at 8R and 14R  
5 subtelomeres, suggesting that the rDNA might constitute the new subtelomere of 9R in *tel-m1-1*.  
6 Subtelomere 16R in *tel-m2-1* provided another example of translocated rDNA, now directly between  
7 a terminal telomere sequence and Sultan elements, which was also hypermethylated (Supp. Fig. S6C).  
8 Overall, the Sultan elements that were no longer near chromosome extremities maintained their  
9 hypermethylation level. This observation was verified in all cases in *tel-m1-1* and *tel-m2-1*, for Sultan  
10 arrays separated from the extremity by up to > 500 kb of other non-methylated sequences. Conversely,  
11 sequences that became capped by telomeres and formed new extremities acquired a  
12 hypermethylation pattern.

13



1

2 **Figure 6. Methylation frequency of new extremities and displaced Sultan elements.** (A-D) Analysis of 5mC  
 3 frequency at CpG sites using reads that unambiguously spanned the indicated regions, in different illustrative  
 4 cases. (A) At the rearranged 3L chromosome arm of *tel-m1-1*. Methylation frequency was plotted over different  
 5 regions of subtelomere 3L in *tel-m1-1* and in CC-4533 as depicted. See also [Supp. Fig. S6A](#) for the methylation  
 6 frequency at chromosome 7 in CC-4533 and *tel-m1-1*. (B) At the broken 14L subtelomere of *tel-m2-1*, where  
 7 internal genomic sequence was then capped by a telomere, compared to CC-4533. (C) At the fused 4L and 4R

1 Sultan arrays of *tel-m1-1*, compared to the two arrays in CC-4533. (D) At the head-to-head fused 9R Sultan arrays  
2 and the transition to rDNA in *tel-m1-1*, compared to the 9R extremity of CC-4533.

3

## 4 Discussion

5

6 Telomeres and subtelomeres are extensively implicated in genome instability induced by telomere  
7 shortening or dysfunction, as exemplified in post-telomere-crisis tumors<sup>13</sup>. Many types of telomere-  
8 related rearrangements have been studied in experimental systems of different model organisms and  
9 in tumor samples from patients. However, a direct assessment and comprehensive picture of the  
10 repertoire of genome rearrangements that functional telomeres protect from have rarely been  
11 achieved. Here, we took advantage of long-read Nanopore sequencing to access telomere-induced SVs  
12 that would have escaped detection from short-read sequencing or at least would have been difficult  
13 to identify, particularly in repeated regions. We chose to sequence heterogeneous populations of  
14 telomerase-negative cells containing a complex mixture of subclonal genome rearrangements and to  
15 perform our analyses mainly at the level of reads, revealing mosaic rearrangement patterns that would  
16 have been missed in assembled clonal genomes.

17

### 18 **Alternative telomere maintenance**

19 We previously demonstrated that telomeres in *C. reinhardtii* are maintained by telomerase and that  
20 mutants of *CrTERT*, the gene encoding its catalytic subunit, displayed an “ever shorter telomere”  
21 phenotype<sup>45</sup>. We evidenced cell death consistent with replicative senescence in some telomerase  
22 mutant cultures but also that other long-term cultures failed to show any growth defect, suggesting  
23 that cells with alternative telomere maintenance mechanisms were selected. In this work, analysis of  
24 chromosome extremities in the long-term cultures of telomerase mutants showed that overall ~60%

1 were still capped by short telomeres, reminiscent of type I post-senescent survivors in *S. cerevisiae*  
2 <sup>37,59</sup>. Interestingly, for at least a subset of them, the telomere sequence was likely recruited *de novo* on  
3 a truncated subtelomere by non-reciprocal translocation, as shown before for cancer cell lines<sup>60</sup>. In all  
4 cases, telomeres were maintained, albeit at a short length distribution, which implied that an  
5 alternative maintenance mechanism was used, relying for example on homologous recombination or  
6 BIR.

7 A number of chromosome extremities completely lacked telomere sequences and their lost telomeres  
8 might have been translocated to the new telomere sites we described. Individual read analysis of such  
9 telomere-less extremities showed that the Sultan array composing the subtelomere displayed a length  
10 distribution at the population level consistent with progressive loss of sequence. This observation leads  
11 to the intriguing possibility that the array of Sultan elements might directly function in end protection  
12 instead of telomeres. Consistently, in end-to-end fusion events involving Sultan arrays (e.g. Fig. 4D and  
13 E), fewer than 10 Sultan elements were left when fusion occurred, which might suggest that larger  
14 Sultan arrays could confer some partial telomere protection. The Sultan element must then ensure  
15 telomere protection by for example binding a yet unknown factor, which might be achieved through  
16 the short telomere-like sequence at the beginning of the element<sup>24</sup> or through another intrinsic binding  
17 site. Since Sultan elements are associated with heterochromatin, indirect binding of factors on  
18 modified histones might also provide sufficient protection, as proposed for some telomerase-negative  
19 *S. pombe* survivors<sup>51</sup>. Consistently, even when the chromosome extremities are not composed of  
20 Sultan elements, but of rDNA repeats or even other sequences, the DNA sequence is highly methylated  
21 (see discussion below).

22 Alternatively, *C. reinhardtii* might transiently tolerate unprotected or partially unprotected telomeres,  
23 as a result of the lack of detectable DNA damage checkpoint kinases Chk1 and Chk2 orthologs or at  
24 least differences in DNA damage response machineries compared to other Viridiplantae and to  
25 Opisthokonts<sup>62,63</sup>.

1 Another strategy to maintain chromosome integrity without telomerase consists in chromosome  
2 circularization, which we observed for chromosome 4 in *tel-m1-1*. Although we encountered only one  
3 such circularization event, the fact that we did not detect another subpopulation with another  
4 structure for chromosome 4 suggests that this circular chromosome conferred some selective  
5 advantage (e.g. telomerase-independent genome integrity) or at least was not counter-selected. A  
6 similar circularization strategy in response to telomerase absence or disruption of telomere protection  
7 was also described in other eukaryotes<sup>38,64-67</sup> and therefore appears to be relatively well-tolerated  
8 across evolution.

9 Overall, although they came at the cost of wide-spread genome rearrangements, the diversity of  
10 alternative strategies to maintain chromosome integrity in telomerase mutants found in a single  
11 organism is remarkable and illustrates genome plasticity at short timescales.

12

### 13 **Mechanisms of telomere-shortening-induced genome rearrangements**

14 Because the approach used in this work consists in a direct visualization of chromosome sequences on  
15 a large scale with as little source of bias as possible, we were able to document a striking variety of  
16 rearrangements. The fact that most rearrangements involved telomeres and subtelomeres suggested  
17 that critically short or dysfunctional telomeres preferentially induced local instabilities, which can  
18 propagate through various mechanisms such as BFB cycles involving dicentrics, as reported in yeast  
19 and human tumors<sup>4,5,13,68-70</sup>.

20 Short or dysfunctional telomeres can lead to end-to-end fusions as observed across evolution<sup>14,71-75</sup>,  
21 although telomere sequences themselves may be completely absent at fusion sites in telomerase-  
22 negative cells<sup>3,4,38,64</sup>. Despite many instances of end-to-end fusions, we found no remaining telomere  
23 sequences at fusion sites in our read datasets, suggesting that in *C. reinhardtii*, even very short  
24 telomeres are sufficient to inhibit fusions. Instead, we detected many subtelomere-subtelomere  
25 fusions, the most frequent involving Sultan arrays. They can occur between different subtelomeres, as

1 in the case of chromosome 4 circularization, or between sister chromatid subtelomeres. Sister  
2 chromatid fusions were followed by cycles of BFB, propagating genome instability over multiple  
3 divisions and over more internal genomic regions, as for extremity 9R in *tel-m1-1*. Of note, we did not  
4 find any signature of chromothripsis, resulting from the aberrant repair of the fragmentation of a  
5 chromosomal region, despite chromothripsis being associated with BFB cycles and telomere crisis in  
6 cancer<sup>76,77</sup>.

7 Interestingly, most rearrangements implicated the repeated elements that are found at the  
8 subtelomeres, which could promote homology-mediated mechanisms for amplification, deletion and  
9 translocation. When different types of elements were found juxtaposed, the transition sequence often  
10 involved microhomologies of a few base pairs (e.g. Fig. 5B and Supp. Fig. S5B-C), suggesting that  
11 mechanisms such as microhomology-mediated break-induced replication (MMBIR)<sup>78,79</sup> or  
12 microhomology-mediated end-joining (MMEJ)<sup>80</sup> might be involved. Even when no homology or  
13 microhomology was detected at junctions, canonical subtelomeric elements were still frequently  
14 found in rearrangements. We speculate that these subtelomeric elements were frequently excised  
15 from their native locus due to terminal instability and were therefore available in subsequent fusion  
16 events. Nevertheless, other internal genomic regions were sometimes duplicated and translocated to  
17 chromosome ends, supporting the idea of a genome-wide increase in genome instability in  
18 telomerase-negative cells<sup>3,4,6,8,9</sup>.

19

## 20 **New chromosome extremities establish heterochromatin**

21 We found that new telomere-capped chromosome extremities formed by sequences originating from  
22 internal genomic regions showed high levels of 5mC. We therefore speculate that telomeres  
23 themselves are sufficient to establish new DNA methylation domains in *C. reinhardtii*, likely to be  
24 associated with heterochromatin, stabilizing the chromosome end and protecting it from degradation  
25 and repair. While the heterochromatic nature of telomeres and subtelomeres is conserved in



1 eukaryotes (except for *A. thaliana* where it is less well established<sup>81-88</sup>), whether and how  
2 heterochromatin forms at a new telomere is less well known across organisms. The detection of new  
3 extremities in our work thus provides an additional piece of evidence for heterochromatin formation  
4 spreading from the telomere sequence being an evolutionarily conserved property of chromosome  
5 extremities. Since many chromosome extremities were not capped by telomere sequences but directly  
6 by the hypermethylated Sultan arrays, one can speculate that heterochromatin might be the primary  
7 functional feature of a protected extremity, even more important than telomere sequences  
8 themselves.

9 Interestingly, Sultan elements that are displaced from their normal subtelomeric location retain a high  
10 level of 5mC, even when found at > 500 kb of the extremity of the chromosome. We previously showed  
11 that Sultan elements are exclusively found at subtelomeres in wild-type strains. We thus propose that  
12 their sequence coevolved with their function at subtelomeres, so that they might recruit  
13 methyltransferases to actively contribute to heterochromatin maintenance and spread. This property  
14 would allow them to remain hypermethylated even when displaced from subtelomeres. Interestingly,  
15 in most cases, the Spacer sequence still acted as the boundary of the hypermethylated domain even  
16 when not located at subtelomeres.

17 To conclude, our results show that *C. reinhardtii* telomerase-negative cells use a variety of strategies  
18 to protect chromosome extremities, including the establishment of DNA methylation, and undergo  
19 diverse and complex rearrangements, highlighting a remarkable plasticity of the genome. This work  
20 demonstrates the potential of long-read sequencing to provide a comprehensive view of complex  
21 genome rearrangements even in mosaic populations of cells at the level of subclones, an analysis that  
22 could be applied to tumor genome heterogeneity.

23

24

## 1 Material and Methods

2

### 3 Strains and growth conditions

4 Wild-type CC-4533 and *tel-m1* and *tel-m2* mutant strains were obtained from the Jonikas lab<sup>46</sup>. They  
5 were maintained on plates in TAP medium<sup>89</sup> at 25°C under low light (5  $\mu\text{E}\cdot\text{m}^{-2}\cdot\text{s}^{-1}$ ) and restreaked in  
6 bulk without subcloning. Before DNA extraction, cells were grown in 200 mL liquid TAP medium until  
7 they reached  $\sim 2 \times 10^7$  cell/mL and collected by centrifugation at 5000 g for 5 min.

8

### 9 DNA extraction and size selection

10 To extract genomic DNA while preserving high-molecular-weight fragments, we developed a modified  
11 version of a Joint Genome Institute protocol ([https://www.pacb.com/wp-](https://www.pacb.com/wp-content/uploads/2015/09/DNA-extraction-chlamy-CTAB-JGI.pdf)  
12 [content/uploads/2015/09/DNA-extraction-chlamy-CTAB-JGI.pdf](https://www.pacb.com/wp-content/uploads/2015/09/DNA-extraction-chlamy-CTAB-JGI.pdf)), as described here<sup>47</sup>. The extraction  
13 is followed by a clean-up using magnetic beads and size selection based on solid-phase reversible  
14 immobilization<sup>90</sup> using the SRE kit (Circulomics).

15

### 16 Library preparation and sequencing

17 Sequencing libraries were prepared from SRE-treated high-molecular-weight DNA (except for *tel-m1-*  
18 *1* which was sequenced in two runs, one without SRE treatment and one with), following Oxford  
19 Nanopore Technologies (ONT) protocols for genomic DNA without pre-amplification. Kits LSK109 and  
20 LSK110 were obtained from ONT and Companion Module NebNext from New England Biolabs (NEB).  
21 As a minor modification, we started the preparation with 3  $\mu\text{g}$  of DNA. The second *tel-m1-1* library was  
22 barcoded using barcode NB07 from kit NBD104 (ONT).

1 DNA libraries were sequenced on R9.4 or R10.4 Nanopore flow cells in a MinION Mk1C sequencer with  
2 default parameters on the MinKNOW operating software, except for the basecalling with Guppy which  
3 was set to real-time high accuracy and for the MUX scan which was decreased to 1 hr. For each run,  
4 500 ng of DNA were loaded and sequenced for 8-12 hrs. The flow cell was then washed using the Wash  
5 kit (ONT) and reloaded with the same sample, up to 4 times.

6

## 7 **Genome assembly**

8 Reads in FASTQ files and with quality >7 were processed using Porechop with default parameters  
9 (<https://github.com/rrwick/Porechop>), for removing adapters/barcodes and splitting artefactual  
10 chimeras. Reads were assembled using Canu<sup>91</sup>, SMARTdenovo<sup>92</sup> and NextDenovo  
11 (<https://github.com/Nextomics/NextDenovo>) using default parameters, and all chromosomes were  
12 successfully represented by one main contig. These draft assemblies were polished using Racon<sup>93</sup>  
13 (<https://github.com/lbcb-sci/racon>) and Medaka (ONT; <https://github.com/nanoporetech/medaka>)  
14 with the same reads, then scaffolded on the CC-1690 reference genome using RagTag<sup>94</sup>  
15 (<https://github.com/malonge/RagTag>). These assemblies were compared to each other and to  
16 references (CC-1690, CC-4532) using D-genies<sup>95</sup> (<https://github.com/genotoul-bioinfo/dgenies>) to  
17 assess contiguity. To generate a genome model for each strain, we chose for each chromosome the  
18 assembly giving the most colinear chromosome with CC-1690.

19 To test if chromosome 4 of *tel-m1-1* was circular at the assembly level without relying on a reference  
20 genome for scaffolding, we used the assembler Flye<sup>96</sup> (<https://github.com/fenderglass/Flye>), as it  
21 generated contigs long enough for this purpose. Visualization of the circular chromosome 4 was done  
22 using Bandage<sup>97</sup> (<https://rrwick.github.io/Bandage/>).

23

## 1 **Telomere sequence detection**

2 To detect telomere sequences in individual Nanopore reads, we developed TeloReader, a Python  
3 (v3.9.12) script with only 3 dependencies (pandas (v1.4.3), numpy (v1.19.5) and matplotlib (v3.5.1)).  
4 TeloReader scans each read in both directions, from 5' to 3' and from 3' to 5', to search for the C-rich  
5 telomere motif and the G-rich one, respectively. In the first step of TeloReader, the DNA sequence is  
6 transformed into a series of scores corresponding to the best alignment score (using pairwise2 from  
7 the package biopython (v1.79)) of each 8-mer against all 8 circular permutations of the telomere motif  
8 (CCCTAAAA for the C-rich and TTTTAGGG for the G-rich). This score is between 0 and 8, but all scores  
9 lower than 4 are replaced by 4, to reduce the impact of sequencing errors in the following step. The  
10 second step defines the sequence in a sliding window of size 15 bp (size\_window) as telomeric if the  
11 average score is greater or equal to 7 (min\_mean\_window). In a third step, consecutive overlapping  
12 telomeric sliding windows are merged to form a single telomere sequence. We added other constraints  
13 and rules to ensure the specificity and sensitivity of TeloReader: the minimal length of a telomere  
14 sequence is set at 16 bp (min\_len); a telomere sequence must contain at least 8 scores of 8; a  
15 configuration where a non-telomeric sequence is found between 2 telomere sequences (as defined  
16 after the third step) can be considered as a telomere sequence if the non-telomeric sequence is shorter  
17 than 20 bp (max\_size\_gap) and if the average score of the whole sequence encompassing the 2  
18 telomere sequences and the non-telomeric sequence in-between is greater than 6.5 (min\_mean\_telo).  
19 A telomere sequence is considered as terminal if it is found at < 50 bp from the extremities of the input  
20 sequence (3' extremity for a C-rich telomere and 5' extremity for a G-rich telomere). The code for  
21 TeloReader is available at: [https://github.com/Telomere-Genome-](https://github.com/Telomere-Genome-Stability/Telomere_2023/tree/main/TELOREADER)  
22 [Stability/Telomere\\_2023/tree/main/TELOREADER](https://github.com/Telomere-Genome-Stability/Telomere_2023/tree/main/TELOREADER).

23

## 1 **5-Methylcytosine detection**

2 To detect 5mC in a CpG context, we used nanopolish<sup>58</sup> (<https://github.com/jts/nanopolish>) on the  
3 FAST5 files and their associated FASTQ files. Reads were aligned to their corresponding genome  
4 assembly using Minimap2<sup>98</sup> (<https://github.com/lh3/minimap2>). Alternatively, for detection of 5mC in  
5 subpopulations, reads were first selected using fast5\_subset  
6 ([https://github.com/nanoporetech/ont\\_fast5\\_api](https://github.com/nanoporetech/ont_fast5_api)) and aligned to a consensus sequence obtained  
7 through a multiple alignment using Clustal W<sup>99</sup>. The frequency of methylation for each base was  
8 obtained using nanopolish call-methylation and the script calculate\_methylation\_frequency.py.

9

## 10 **Bioinformatic analysis**

11 For genome-to-genome comparison, genome models were aligned against reference genomes (CC-  
12 1690 and CC-4533) using Minimap2<sup>98</sup> and visualized with Circos plots<sup>48</sup>. SV caller MUM&Co<sup>53</sup>  
13 (<https://github.com/SAMtoBAM/MUMandCo>) was used for structural variant detection and  
14 classification. For read analysis, reads were mapped to genomes using Minimap2 with parameters: -a  
15 -x map-ont -K 5M -t 3. We used Integrative Genome Viewer (IGV)<sup>100</sup> (<https://igv.org/>) and Tablet<sup>101</sup>  
16 (<https://ics.hutton.ac.uk/tablet/>) to visualize read mapping. To calculate sequencing depth, the  
17 genomes were divided into windows using 'makewindows' from BEDTools<sup>102</sup>  
18 (<https://bedtools.readthedocs.io/en/latest/index.html>), then depth was averaged over the windows  
19 using 'bedcov' from Samtools<sup>103</sup> (<https://www.htslib.org/>) with parameters: -g SUPPLEMENTARY with  
20 or without -q 60.

21 For read level analysis, subtelomeric elements (Spacer, Sultan, rDNA and Suber) were searched in reads  
22 using blastn<sup>104</sup> with parameters: -max\_target\_seqs 10000 -evalue 0.001 -outfmt "6 qaccver qlen  
23 saccver slen pident length mismatch gapopen qstart qend sstart send evalue bitscore". Multiple hits  
24 at close positions were filtered using a custom bash script: hits were sorted by decreasing order of  
25 bitscore (`sort -rgk 14`) and overlapping matches were eliminated. Reads containing subtelomeric

1 elements or telomeres (detected by TeloReader) were further blasted against a library of repeated  
2 elements<sup>105</sup> and against reference genome, both of which were then filtered as above to exclude  
3 multiple matches. Annotations from all blast hits were then plotted on reads using R. Plots were  
4 created using an R script based on dplyr, tidyr and ggplot2 libraries. All lists of filtered blast hits lists  
5 were merged with ‘bind\_rows’, reads of interest were identified (e.g. match to a given Spacer or  
6 Sultan) with ‘filter’ and all hits on this read subset were extracted with ‘semi\_join’. To order these  
7 reads, first, an anchor was selected, most often a specific Spacer sequence, allowing to set an origin  
8 and the orientation of each read. From these two pieces of information, new coordinates were re-  
9 calculated for each hit along the reads and for read extremities. Hits were then plotted with distinct  
10 reads along the y-axis and coordinates along the x-axis (e.g. Fig. 3A, 3D, 4C-E). Due to the error rate of  
11 Nanopore sequencing at the raw read level together with rare artefactual chimeric reads<sup>106</sup>, we only  
12 describe rearrangements structurally supported by at least two reads.

13 Computations were mostly run on the cluster of the French Institute of Bioinformatics  
14 (<https://www.france-bioinformatique.fr/en/home/>).

15

## 16 Acknowledgement

17 We thank Olivier Vallon for his critical reading of the manuscript. Research in GF’s laboratory was  
18 supported by the French National Research Agency (“ANR” grants: ANR-16-CE 12-0019 and ANR-18-  
19 CE12-0004). Research in ZX’s laboratory was supported by ANR grant “AlgaTelo” (ANR-17-CE20-0002-  
20 01), by Ville de Paris (Programme Émergence(s)) and by the French National Cancer Institute (grant:  
21 INCa\_15192). FC is currently supported by a Marie Skłodowska-Curie Actions Postdoctoral Fellowship  
22 (101064365 – Cocco-Next).

23

## 1 Author contributions

2 Investigation: FC, NA, CG, SE; Conceptualization: FC, GF, SE, ZX; Methodology: FC, NA, CG; Software:  
3 FC, CG; Formal analysis: FC, NA, CG, SE; Supervision: GF, ZX; Writing – Original Draft: FC, ZX; Writing –  
4 Review & Editing: all authors.

5

## 6 Conflicts of interest

7 None declared.

8

## 9 References

- 10 1 Jain, D. & Cooper, J. P. Telomeric strategies: means to an end. *Annual Review of Genetics* **44**,  
11 243-269, doi:10.1146/annurev-genet-102108-134841 (2010).
- 12 2 de Lange, T. Shelterin-Mediated Telomere Protection. *Annu. Rev. Genet.* **52**, 223-247,  
13 doi:10.1146/annurev-genet-032918-021921 (2018).
- 14 3 Blasco, M. A. *et al.* Telomere shortening and tumor formation by mouse cells lacking  
15 telomerase RNA. *Cell* **91**, 25-34 (1997).
- 16 4 Hackett, J. A., Feldser, D. M. & Greider, C. W. Telomere dysfunction increases mutation rate  
17 and genomic instability. *Cell* **106**, 275-286. (2001).
- 18 5 Hackett, J. A. & Greider, C. W. End resection initiates genomic instability in the absence of  
19 telomerase. *Mol. Cell. Biol.* **23**, 8450-8461 (2003).
- 20 6 Coutelier, H. *et al.* Adaptation to DNA damage checkpoint in senescent telomerase-negative  
21 cells promotes genome instability. *Genes Dev.* **32**, 1499-1513, doi:10.1101/gad.318485.118  
22 (2018).
- 23 7 Maciejowski, J., Li, Y., Bosco, N., Campbell, P. J. & de Lange, T. Chromothripsis and Kataegis  
24 Induced by Telomere Crisis. *Cell* **163**, 1641-1654, doi:10.1016/j.cell.2015.11.054 (2015).
- 25 8 Chin, L. *et al.* p53 deficiency rescues the adverse effects of telomere loss and cooperates with  
26 telomere dysfunction to accelerate carcinogenesis. *Cell* **97**, 527-538 (1999).
- 27 9 Lee, H. W. *et al.* Essential role of mouse telomerase in highly proliferative organs. *Nature* **392**,  
28 569-574 (1998).
- 29 10 Artandi, S. E. *et al.* Telomere dysfunction promotes non-reciprocal translocations and  
30 epithelial cancers in mice. *Nature* **406**, 641-645, doi:10.1038/35020592 (2000).
- 31 11 Henninger, E. & Teixeira, M. T. Telomere-driven mutational processes in yeast. *Curr. Opin.*  
32 *Genet. Dev.* **60**, 99-106, doi:10.1016/j.gde.2020.02.018 (2020).
- 33 12 Artandi, S. E. & Depinho, R. A. Telomeres and telomerase in cancer. *Carcinogenesis*, doi:10.1038/103812a  
34 (2009).
- 35 13 Maciejowski, J. & de Lange, T. Telomeres in cancer: tumour suppression and genome  
36 instability. *Nat Rev Mol Cell Biol* **18**, 175-186, doi:10.1038/nrm.2016.171 (2017).
- 37 14 Capper, R. *et al.* The nature of telomere fusion and a definition of the critical telomere length  
38 in human cells. *Genes Dev.* **21**, 2495-2508 (2007).

- 1 15 Jones, R. E. *et al.* Escape from telomere-driven crisis is DNA ligase III dependent. *Cell Rep* **8**,  
2 1063-1076, doi:10.1016/j.celrep.2014.07.007 (2014).
- 3 16 McClintock, B. The Stability of Broken Ends of Chromosomes in Zea Mays. *Genetics* **26**, 234-  
4 282, doi:10.1093/genetics/26.2.234 (1941).
- 5 17 Davoli, T., Denchi, E. L. & de Lange, T. Persistent telomere damage induces bypass of mitosis  
6 and tetraploidy. *Cell* **141**, 81-93, doi:10.1016/j.cell.2010.06.018 (2010).
- 7 18 Yue, J. X. *et al.* Contrasting evolutionary genome dynamics between domesticated and wild  
8 yeasts. *Nat. Genet.* **49**, 913-924, doi:10.1038/ng.3847 (2017).
- 9 19 Corcoran, L. M., Thompson, J. K., Walliker, D. & Kemp, D. J. Homologous recombination within  
10 subtelomeric repeat sequences generates chromosome size polymorphisms in *P. falciparum*.  
11 *Cell* **53**, 807-813, doi:10.1016/0092-8674(88)90097-9 (1988).
- 12 20 Louis, E. J. The chromosome ends of *Saccharomyces cerevisiae*. *Yeast* **11**, 1553-1573 (1995).
- 13 21 Kim, J. M., Vanguri, S., Boeke, J. D., Gabriel, A. & Voytas, D. F. Transposable elements and  
14 genome organization: a comprehensive survey of retrotransposons revealed by the complete  
15 *Saccharomyces cerevisiae* genome sequence. *Genome Res.* **8**, 464-478 (1998).
- 16 22 Fabre, E. *et al.* Comparative genomics in hemiascomycete yeasts: evolution of sex, silencing,  
17 and subtelomeres. *Mol. Biol. Evol.* **22**, 856-873 (2005).
- 18 23 Richard, M. M. *et al.* The Subtelomeric khipu Satellite Repeat from *Phaseolus vulgaris*: Lessons  
19 Learned from the Genome Analysis of the Andean Genotype G19833. *Front Plant Sci* **4**, 109,  
20 doi:10.3389/fpls.2013.00109 (2013).
- 21 24 Chaux-Jukic, F. *et al.* Architecture and evolution of subtelomeres in the unicellular green alga  
22 *Chlamydomonas reinhardtii*. *Nucleic Acids Res* **49**, 7571-7587, doi:10.1093/nar/gkab534  
23 (2021).
- 24 25 Takikawa, M., Tarumoto, Y. & Ishikawa, F. Fission yeast Stn1 is crucial for semi-conservative  
25 replication at telomeres and subtelomeres. *Nucleic Acids Res* **45**, 1255-1269,  
26 doi:10.1093/nar/gkw1176 (2017).
- 27 26 Chen, N. W. G. *et al.* Common Bean Subtelomeres Are Hot Spots of Recombination and Favor  
28 Resistance Gene Evolution. *Front Plant Sci* **9**, 1185, doi:10.3389/fpls.2018.01185 (2018).
- 29 27 Kim, C. *et al.* Long-read sequencing reveals intra-species tolerance of substantial structural  
30 variations and new subtelomere formation in *C. elegans*. *Genome Res.* **29**, 1023-1035,  
31 doi:10.1101/gr.246082.118 (2019).
- 32 28 Louis, E. J. & Haber, J. E. Mitotic recombination among subtelomeric Y' repeats in  
33 *Saccharomyces cerevisiae*. *Genetics* **124**, 547-559. (1990).
- 34 29 Linardopoulou, E. V. *et al.* Human subtelomeres are hot spots of interchromosomal  
35 recombination and segmental duplication. *Nature* **437**, 94-100 (2005).
- 36 30 Rudd, M. K. *et al.* Elevated rates of sister chromatid exchange at chromosome ends. *PLoS Genet*  
37 **3**, e32, doi:10.1371/journal.pgen.0030032 (2007).
- 38 31 Kuo, H. F., Olsen, K. M. & Richards, E. J. Natural variation in a subtelomeric region of  
39 *Arabidopsis*: implications for the genomic dynamics of a chromosome end. *Genetics* (2006).
- 40 32 Maestroni, L. *et al.* Eroded telomeres are rearranged in quiescent fission yeast cells through  
41 duplications of subtelomeric sequences. *Nat Commun* **8**, 1684, doi:10.1038/s41467-017-  
42 01894-6 (2017).
- 43 33 Otto, T. D. *et al.* Long read assemblies of geographically dispersed *Plasmodium falciparum*  
44 isolates reveal highly structured subtelomeres. *Wellcome Open Res* **3**, 52,  
45 doi:10.12688/wellcomeopenres.14571.1 (2018).
- 46 34 Anderson, J. A., Song, Y. S. & Langley, C. H. Molecular population genetics of *Drosophila*  
47 subtelomeric DNA. *Genetics* **178**, 477-487, doi:10.1534/genetics.107.083196 (2008).
- 48 35 Young, E., Abid, H. Z., Kwok, P. Y., Riethman, H. & Xiao, M. Comprehensive Analysis of Human  
49 Subtelomeres by Whole Genome Mapping. *PLoS Genet* **16**, e1008347,  
50 doi:10.1371/journal.pgen.1008347 (2020).
- 51 36 Cesare, A. J. & Reddel, R. R. Alternative lengthening of telomeres: models, mechanisms and  
52 implications. *Nat Rev Genet* **11**, 319-330, doi:10.1038/nrg2763 (2010).



- 1 37 Lundblad, V. & Blackburn, E. H. An alternative pathway for yeast telomere maintenance  
2 rescues est1- senescence. *Cell* **73**, 347-360 (1993).
- 3 38 Nakamura, T. M., Cooper, J. P. & Cech, T. R. Two modes of survival of fission yeast without  
4 telomerase. *Science* **282**, 493-496 (1998).
- 5 39 Zellinger, B., Akimcheva, S., Puizina, J., Schirato, M. & Riha, K. Ku suppresses formation of  
6 telomeric circles and alternative telomere lengthening in Arabidopsis. *Mol. Cell* **27**, 163-169  
7 (2007).
- 8 40 Ho, S. S., Urban, A. E. & Mills, R. E. Structural variation in the sequencing era. *Nat Rev Genet*  
9 **21**, 171-189, doi:10.1038/s41576-019-0180-9 (2020).
- 10 41 Kockler, Z. W., Comeron, J. M. & Malkova, A. A unified alternative telomere-lengthening  
11 pathway in yeast survivor cells. *Mol. Cell*, doi:10.1016/j.molcel.2021.02.004 (2021).
- 12 42 Sholes, S. L. *et al.* Chromosome-specific telomere lengths and the minimal functional telomere  
13 revealed by nanopore sequencing. *Genome Res.*, doi:10.1101/gr.275868.121 (2021).
- 14 43 Kim, E., Kim, J., Kim, C. & Lee, J. Long-read sequencing and de novo genome assemblies reveal  
15 complex chromosome end structures caused by telomere dysfunction at the single nucleotide  
16 level. *Nucleic Acids Res* **49**, 3338-3353, doi:10.1093/nar/gkab141 (2021).
- 17 44 Hails, T., Jobling, M. & Day, A. Large arrays of tandemly repeated DNA sequences in the green  
18 alga *Chlamydomonas reinhardtii*. *Chromosoma* **102**, 500-507, doi:10.1007/BF00357106  
19 (1993).
- 20 45 Eberhard, S. *et al.* Molecular characterization of *Chlamydomonas reinhardtii* telomeres and  
21 telomerase mutants. *Life science alliance* **2**, doi:10.26508/lsa.201900315 (2019).
- 22 46 Li, X. *et al.* An Indexed, Mapped Mutant Library Enables Reverse Genetics Studies of Biological  
23 Processes in *Chlamydomonas reinhardtii*. *Plant Cell* **28**, 367-387, doi:10.1105/tpc.15.00465  
24 (2016).
- 25 47 Chaux-Jukic, F., Agier, N., Eberhard, S. & Xu, Z. Extraction and selection of high-molecular-  
26 weight DNA for long-read sequencing from *Chlamydomonas reinhardtii*. *bioRxiv*,  
27 doi:https://doi.org/10.1101/2022.08.16.504088 (2022).
- 28 48 Krzywinski, M. *et al.* Circos: an information aesthetic for comparative genomics. *Genome Res.*  
29 **19**, 1639-1645, doi:10.1101/gr.092759.109 (2009).
- 30 49 O'Donnell, S., Chaux, F. & Fischer, G. Highly Contiguous Nanopore Genome Assembly of  
31 *Chlamydomonas reinhardtii* CC-1690. *Microbiol Resour Announc* **9**, doi:10.1128/MRA.00726-  
32 20 (2020).
- 33 50 Gallaher, S. D., Fitz-Gibbon, S. T., Glaesener, A. G., Pellegrini, M. & Merchant, S. S.  
34 *Chlamydomonas* Genome Resource for Laboratory Strains Reveals a Mosaic of Sequence  
35 Variation, Identifies True Strain Histories, and Enables Strain-Specific Studies. *Plant Cell* **27**,  
36 2335-2352, doi:10.1105/tpc.15.00508 (2015).
- 37 51 Flowers, J. M. *et al.* Whole-Genome Resequencing Reveals Extensive Natural Variation in the  
38 Model Green Alga *Chlamydomonas reinhardtii*. *Plant Cell* **27**, 2353-2369,  
39 doi:10.1105/tpc.15.00492 (2015).
- 40 52 Craig, R. J. *et al.* The *Chlamydomonas* Genome Project, version 6: reference assemblies for  
41 mating type plus and minus strains reveal extensive structural mutation in the laboratory.  
42 *Plant Cell*, doi:10.1093/plcell/koac347 (2022).
- 43 53 O'Donnell, S. & Fischer, G. MUM&Co: accurate detection of all SV types through whole-  
44 genome alignment. *Bioinformatics* **36**, 3242-3243, doi:10.1093/bioinformatics/btaa115  
45 (2020).
- 46 54 Filloramo, G. V., Curtis, B. A., Blanche, E. & Archibald, J. M. Re-examination of two diatom  
47 reference genomes using long-read sequencing. *BMC Genomics* **22**, 379, doi:10.1186/s12864-  
48 021-07666-3 (2021).
- 49 55 Robertson, W. R. B. Chromosome studies. I. Taxonomic relationships shown in the  
50 chromosomes of tettigidae and acrididae: V-shaped chromosomes and their significance in  
51 acrididae, locustidae, and gryllidae: Chromosomes and variation. *Journal of Morphology* **27**,  
52 179-331, doi:https://doi.org/10.1002/jmor.1050270202 (1916).

- 1 56 Jones, K. Robertsonian fusion and centric fission in karyotype evolution of higher plants. *The*  
2 *Botanical Review* **64**, 273-289, doi:10.1007/BF02856567 (1998).
- 3 57 Strenkert, D., Schmollinger, S. & Schroda, M. Heat shock factor 1 counteracts epigenetic  
4 silencing of nuclear transgenes in *Chlamydomonas reinhardtii*. *Nucleic Acids Res* **41**, 5273-  
5 5289, doi:10.1093/nar/gkt224 (2013).
- 6 58 Simpson, J. T. *et al.* Detecting DNA cytosine methylation using nanopore sequencing. *Nat*  
7 *Methods* **14**, 407-410, doi:10.1038/nmeth.4184 (2017).
- 8 59 Teng, S. C. & Zakian, V. A. Telomere-telomere recombination is an efficient bypass pathway for  
9 telomere maintenance in *Saccharomyces cerevisiae*. *Mol. Cell. Biol.* **19**, 8083-8093 (1999).
- 10 60 Sabatier, L., Ricoul, M., Pottier, G. & Murnane, J. P. The loss of a single telomere can result in  
11 instability of multiple chromosomes in a human tumor cell line. *Mol Cancer Res* **3**, 139-150,  
12 doi:10.1158/1541-7786.MCR-04-0194 (2005).
- 13 61 Jain, D., Hebden, A. K., Nakamura, T. M., Miller, K. M. & Cooper, J. P. HAATI survivors replace  
14 canonical telomeres with blocks of generic heterochromatin. *Nature* **467**, 223-227,  
15 doi:nature09374 (2010).
- 16 62 Cross, F. R. & Umen, J. G. The *Chlamydomonas* cell cycle. *Plant J.* **82**, 370-392,  
17 doi:10.1111/tpj.12795 (2015).
- 18 63 Fauser, F. *et al.* Systematic characterization of gene function in the photosynthetic alga  
19 *Chlamydomonas reinhardtii*. *Nat. Genet.* **54**, 705-714, doi:10.1038/s41588-022-01052-9  
20 (2022).
- 21 64 Naito, T., Matsuura, A. & Ishikawa, F. Circular chromosome formation in a fission yeast mutant  
22 defective in two ATM homologues. *Nat. Genet.* **20**, 203-206 (1998).
- 23 65 McEachern, M. J., Iyer, S., Fulton, T. B. & Blackburn, E. H. Telomere fusions caused by mutating  
24 the terminal region of telomeric DNA. *PNAS* **97**, 11409-11414 (2000).
- 25 66 Baumann, P. & Cech, T. R. Pot1, the putative telomere end-binding protein in fission yeast and  
26 humans. *Science* **292**, 1171-1175 (2001).
- 27 67 Wu, Z. J. *et al.* Cdc13 is predominant over Stn1 and Ten1 in preventing chromosome end  
28 fusions. *eLife* **9**, doi:10.7554/eLife.53144 (2020).
- 29 68 Beyer, T. & Weinert, T. Ontogeny of Unstable Chromosomes Generated by Telomere Error in  
30 Budding Yeast. *PLoS Genet* **12**, e1006345, doi:10.1371/journal.pgen.1006345 (2016).
- 31 69 Pobiega, S. & Marcand, S. Dicentric breakage at telomere fusions. *Genes Dev.* **24**, 720-733,  
32 doi:24/7/720 (2010).
- 33 70 Umbreit, N. T. *et al.* Mechanisms generating cancer genome complexity from a single cell  
34 division error. *Science* **368**, doi:10.1126/science.aba0712 (2020).
- 35 71 Chan, S. W. & Blackburn, E. H. Telomerase and ATM/Tel1p protect telomeres from  
36 nonhomologous end joining. *Mol. Cell* **11**, 1379-1387 (2003).
- 37 72 Mieczkowski, P. A., Mieczkowska, J. O., Dominska, M. & Petes, T. D. Genetic regulation of  
38 telomere-telomere fusions in the yeast *Saccharomyces cerevisiae*. *Proc. Natl. Acad. Sci. U. S. A.*  
39 **100**, 10854-10859 (2003).
- 40 73 Heacock, M., Spangler, E., Riha, K., Puizina, J. & Shippen, D. E. Molecular analysis of telomere  
41 fusions in *Arabidopsis*: multiple pathways for chromosome end-joining. *EMBO J.* **23**, 2304-2313  
42 (2004).
- 43 74 Pardo, B. & Marcand, S. Rap1 prevents telomere fusions by nonhomologous end joining. *EMBO*  
44 *J.* (2005).
- 45 75 Lowden, M. R., Meier, B., Lee, T. W., Hall, J. & Ahmed, S. End joining at *Caenorhabditis elegans*  
46 telomeres. *Genetics* **180**, 741-754 (2008).
- 47 76 Li, Y. *et al.* Constitutional and somatic rearrangement of chromosome 21 in acute  
48 lymphoblastic leukaemia. *Nature* **508**, 98-102, doi:10.1038/nature13115 (2014).
- 49 77 Garsed, D. W. *et al.* The architecture and evolution of cancer neochromosomes. *Cancer Cell*  
50 **26**, 653-667, doi:10.1016/j.ccell.2014.09.010 (2014).

- 1 78 Payen, C., Koszul, R., Dujon, B. & Fischer, G. Segmental duplications arise from Pol32-  
2 dependent repair of broken forks through two alternative replication-based mechanisms. *PLoS*  
3 *Genet* **4**, e1000175, doi:10.1371/journal.pgen.1000175 (2008).
- 4 79 Hastings, P. J., Ira, G. & Lupski, J. R. A microhomology-mediated break-induced replication  
5 model for the origin of human copy number variation. *PLoS Genet* **5**, e1000327,  
6 doi:10.1371/journal.pgen.1000327 (2009).
- 7 80 Sfeir, A. & Symington, L. S. Microhomology-Mediated End Joining: A Back-up Survival  
8 Mechanism or Dedicated Pathway? *Trends Biochem. Sci.* **40**, 701-714,  
9 doi:10.1016/j.tibs.2015.08.006 (2015).
- 10 81 Elgin, S. C. & Reuter, G. Position-effect variegation, heterochromatin formation, and gene  
11 silencing in *Drosophila*. *Cold Spring Harb Perspect Biol* **5**, a017780,  
12 doi:10.1101/cshperspect.a017780 (2013).
- 13 82 Matsuda, A. *et al.* Highly condensed chromatins are formed adjacent to subtelomeric and  
14 decondensed silent chromatin in fission yeast. *Nat Commun* **6**, 7753,  
15 doi:10.1038/ncomms8753 (2015).
- 16 83 Koering, C. E. *et al.* Human telomeric position effect is determined by chromosomal context  
17 and telomeric chromatin integrity. *EMBO Rep* **3**, 1055-1061 (2002).
- 18 84 Pedram, M. *et al.* Telomere position effect and silencing of transgenes near telomeres in the  
19 mouse. *Mol. Cell. Biol.* **26**, 1865-1878 (2006).
- 20 85 Gottschling, D. E., Aparicio, O. M., Billington, B. L. & Zakian, V. A. Position effect at *S. cerevisiae*  
21 telomeres: reversible repression of Pol II transcription. *Cell* **63**, 751-762 (1990).
- 22 86 Baur, J. A., Zou, Y., Shay, J. W. & Wright, W. E. Telomere position effect in human cells. *Science*  
23 **292**, 2075-2077 (2001).
- 24 87 Vrbisky, J. *et al.* siRNA-mediated methylation of Arabidopsis telomeres. *PLoS Genet* **6**,  
25 e1000986, doi:10.1371/journal.pgen.1000986 (2010).
- 26 88 Vaquero-Sedas, M. I., Gamez-Arjona, F. M. & Vega-Palas, M. A. Arabidopsis thaliana telomeres  
27 exhibit euchromatic features. *Nucleic Acids Res* **39**, 2007-2017, doi:10.1093/nar/gkq1119  
28 (2011).
- 29 89 Harris, E. H. *The Chlamydomonas Sourcebook*. (Elsevier/Academic Press, 2009).
- 30 90 Stortchevoi, A., Kamelamela, N. & Levine, S. S. SPRI Beads-based Size Selection in the Range of  
31 2-10kb. *J Biomol Tech* **31**, 7-10, doi:10.7171/jbt.20-3101-002 (2020).
- 32 91 Koren, S. *et al.* Canu: scalable and accurate long-read assembly via adaptive k-mer weighting  
33 and repeat separation. *Genome Res.* **27**, 722-736, doi:10.1101/gr.215087.116 (2017).
- 34 92 Liu, H., Wu, S., Li, A. & Ruan, J. SMARTdenovo: a de novo assembler using long noisy reads.  
35 *Gigabyte* **2021** (2021).
- 36 93 Vaser, R., Sovic, I., Nagarajan, N. & Sikic, M. Fast and accurate de novo genome assembly from  
37 long uncorrected reads. *Genome Res.* **27**, 737-746, doi:10.1101/gr.214270.116 (2017).
- 38 94 Alonge, M. *et al.* Automated assembly scaffolding using RagTag elevates a new tomato system  
39 for high-throughput genome editing. *Genome Biol* **23**, 258, doi:10.1186/s13059-022-02823-7  
40 (2022).
- 41 95 Cabanettes, F. & Klopp, C. D-GENIES: dot plot large genomes in an interactive, efficient and  
42 simple way. *PeerJ* **6**, e4958, doi:10.7717/peerj.4958 (2018).
- 43 96 Kolmogorov, M., Yuan, J., Lin, Y. & Pevzner, P. A. Assembly of long, error-prone reads using  
44 repeat graphs. *Nat. Biotechnol.* **37**, 540-546, doi:10.1038/s41587-019-0072-8 (2019).
- 45 97 Wick, R. R., Schultz, M. B., Zobel, J. & Holt, K. E. Bandage: interactive visualization of de novo  
46 genome assemblies. *Bioinformatics* **31**, 3350-3352, doi:10.1093/bioinformatics/btv383  
47 (2015).
- 48 98 Li, H. Minimap2: pairwise alignment for nucleotide sequences. *Bioinformatics* **34**, 3094-3100,  
49 doi:10.1093/bioinformatics/bty191 (2018).
- 50 99 Larkin, M. A. *et al.* Clustal W and Clustal X version 2.0. *Bioinformatics* **23**, 2947-2948,  
51 doi:10.1093/bioinformatics/btm404 (2007).

- 1 100 Robinson, J. T., Thorvaldsdottir, H., Wenger, A. M., Zehir, A. & Mesirov, J. P. Variant Review  
2 with the Integrative Genomics Viewer. *Cancer Res.* **77**, e31-e34, doi:10.1158/0008-5472.CAN-  
3 17-0337 (2017).
- 4 101 Milne, I. *et al.* Using Tablet for visual exploration of second-generation sequencing data. *Brief*  
5 *Bioinform* **14**, 193-202, doi:10.1093/bib/bbs012 (2013).
- 6 102 Quinlan, A. R. & Hall, I. M. BEDTools: a flexible suite of utilities for comparing genomic features.  
7 *Bioinformatics* **26**, 841-842, doi:10.1093/bioinformatics/btq033 (2010).
- 8 103 Li, H. *et al.* The Sequence Alignment/Map format and SAMtools. *Bioinformatics* **25**, 2078-2079,  
9 doi:10.1093/bioinformatics/btp352 (2009).
- 10 104 Altschul, S. F., Gish, W., Miller, W., Myers, E. W. & Lipman, D. J. Basic local alignment search  
11 tool. *J. Mol. Biol.* **215**, 403-410, doi:10.1016/S0022-2836(05)80360-2 (1990).
- 12 105 Craig, R. J., Hasan, A. R., Ness, R. W. & Keightley, P. D. Comparative genomics of  
13 *Chlamydomonas*. *Plant Cell*, doi:10.1093/plcell/koab026 (2021).
- 14 106 Delahaye, C. & Nicolas, J. Sequencing DNA with nanopores: Troubles and biases. *PLoS One* **16**,  
15 e0257521, doi:10.1371/journal.pone.0257521 (2021).  
16  
17