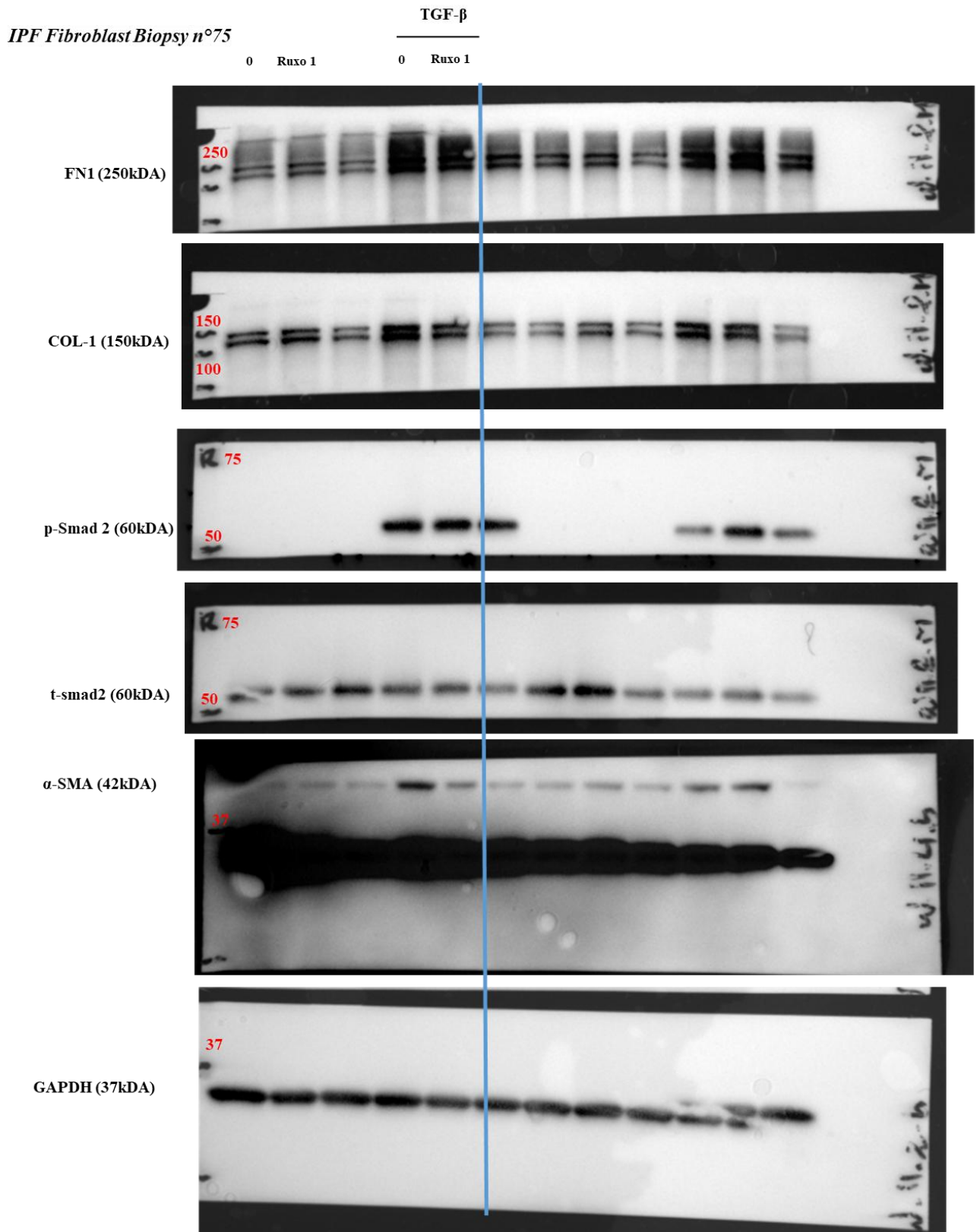
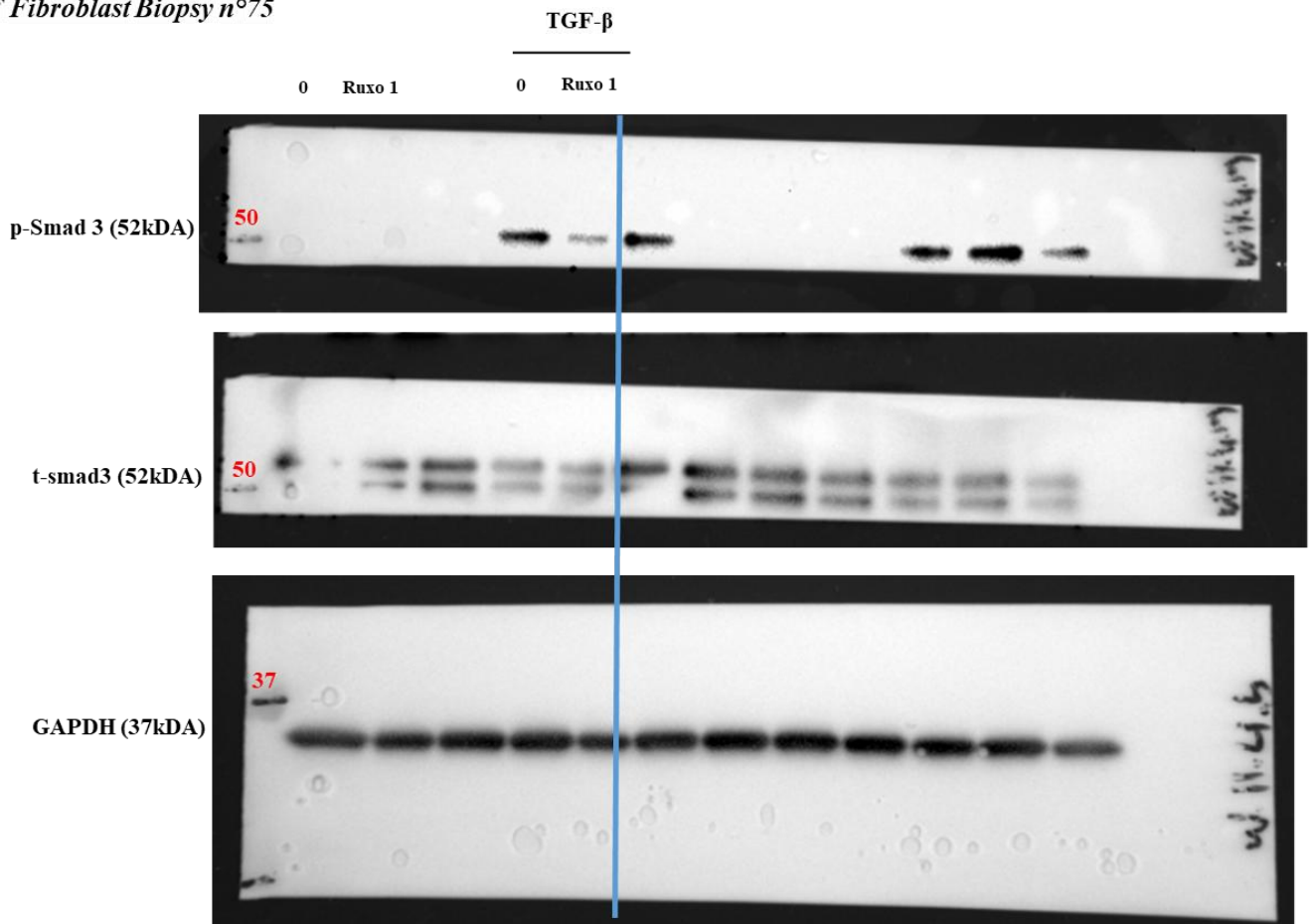
**Supplementary Fig. S1 :**

Staining of lung (left upper lobe) showing total section (x1,25) and details of the sub-pleural, parenchymal and peri-bronchial regions (x20) by Masson's Trichrome. Sections of mouse lung are representative of each group (n = 6 mice per group)

Supplementary Fig. S3 :

Uncropped images of the original Western blots shown in the Fig. 4 and Fig 5.



IPF Fibroblast Biopsy n°75

IPF Fibroblast Biopsy n°49

