



Exposure of young children to settled dust: an analysis of parental knowledge and risk perception

Raquel Bertoldo, Laure Malleret

► To cite this version:

Raquel Bertoldo, Laure Malleret. Exposure of young children to settled dust: an analysis of parental knowledge and risk perception. Congress of the International Association of People-Environnement Studies, ISCTE - Lisbon University Institute, Jul 2022, Lisboa, Portugal. hal-03963667

HAL Id: hal-03963667

<https://hal.science/hal-03963667>

Submitted on 30 Jan 2023

HAL is a multi-disciplinary open access archive for the deposit and dissemination of scientific research documents, whether they are published or not. The documents may come from teaching and research institutions in France or abroad, or from public or private research centers.

L'archive ouverte pluridisciplinaire **HAL**, est destinée au dépôt et à la diffusion de documents scientifiques de niveau recherche, publiés ou non, émanant des établissements d'enseignement et de recherche français ou étrangers, des laboratoires publics ou privés.

Exposure of young children to settled dust

an analysis of parental knowledge and risk perception

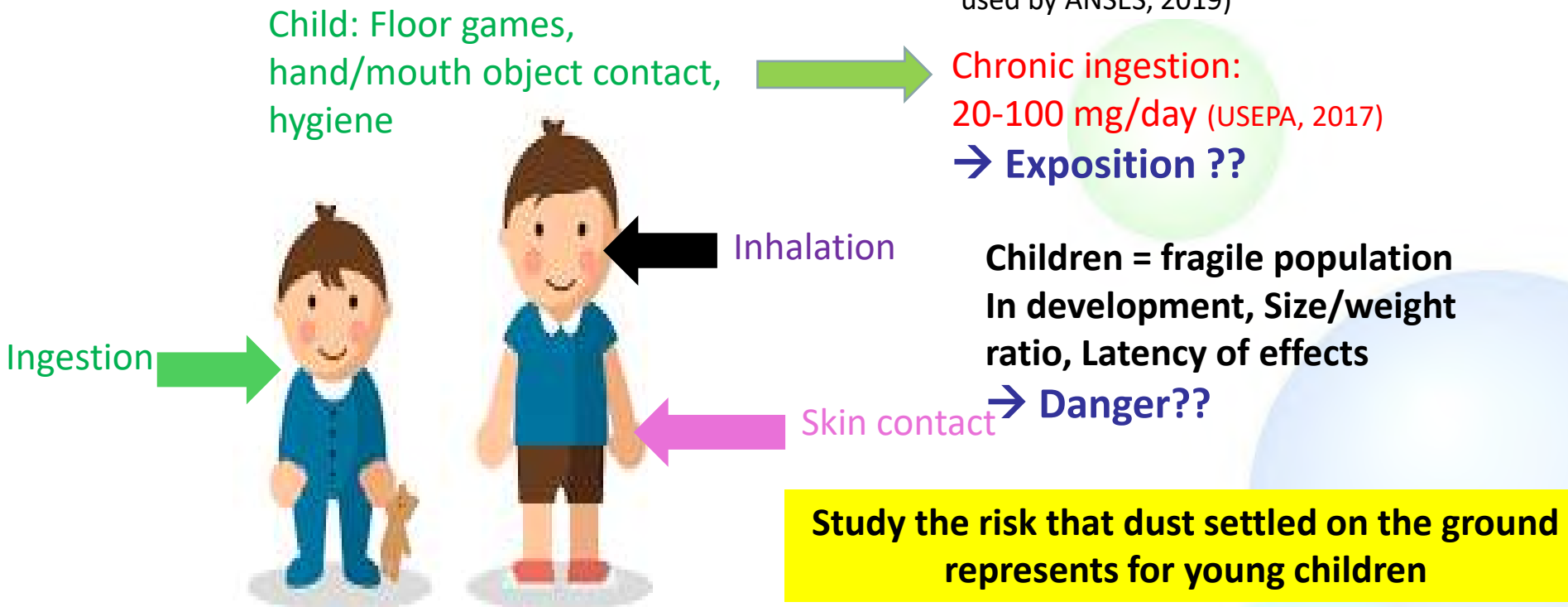


Raquel Bertoldo
Social Psychology Laboratory



Laure Malleret
Environmental Chemistry Laboratory

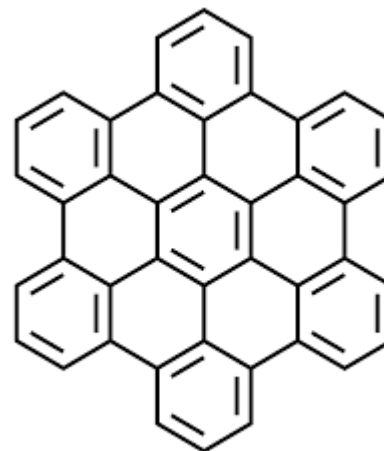
Context and goals

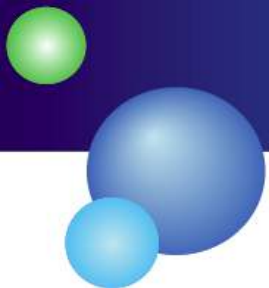


- **Chemical** analysis of settled dust in schools
 - playgrounds
 - Classroom
- **Genotoxic** analysis of the settled dust
 - Mutagenic potential → by 'ingestion' and 'skin contact'
- **Exposure** to settled dust in the household
 - Analysis of **cleaning behaviour** in the household
 - **Risk perception**

First chemical results

- Preliminary analysis show the presence of PAH in settled dust in schools – both in urban and rural areas
 - Polycyclic Aromatic Hydrocarbon



- 
- Literature shows that
 - **Exterior** environment is regarded as ‘dirtier’ than **interior** environment
 - **Microorganisms** present in dust raise more concerns than other **chemical particles**

[Mackendrick, N. (2014); Crighton et al. (2013)]

- How do parents of young children think about dust?
 - How they **understand** settled dust?
 - How do they **perceive risks** related to settled dust?
 - What are the variables explaining cleaning behaviours?

- 1 pre-study (50 parents)
- Study 1 (212 parents)

Aix-Marseille Region

Variables

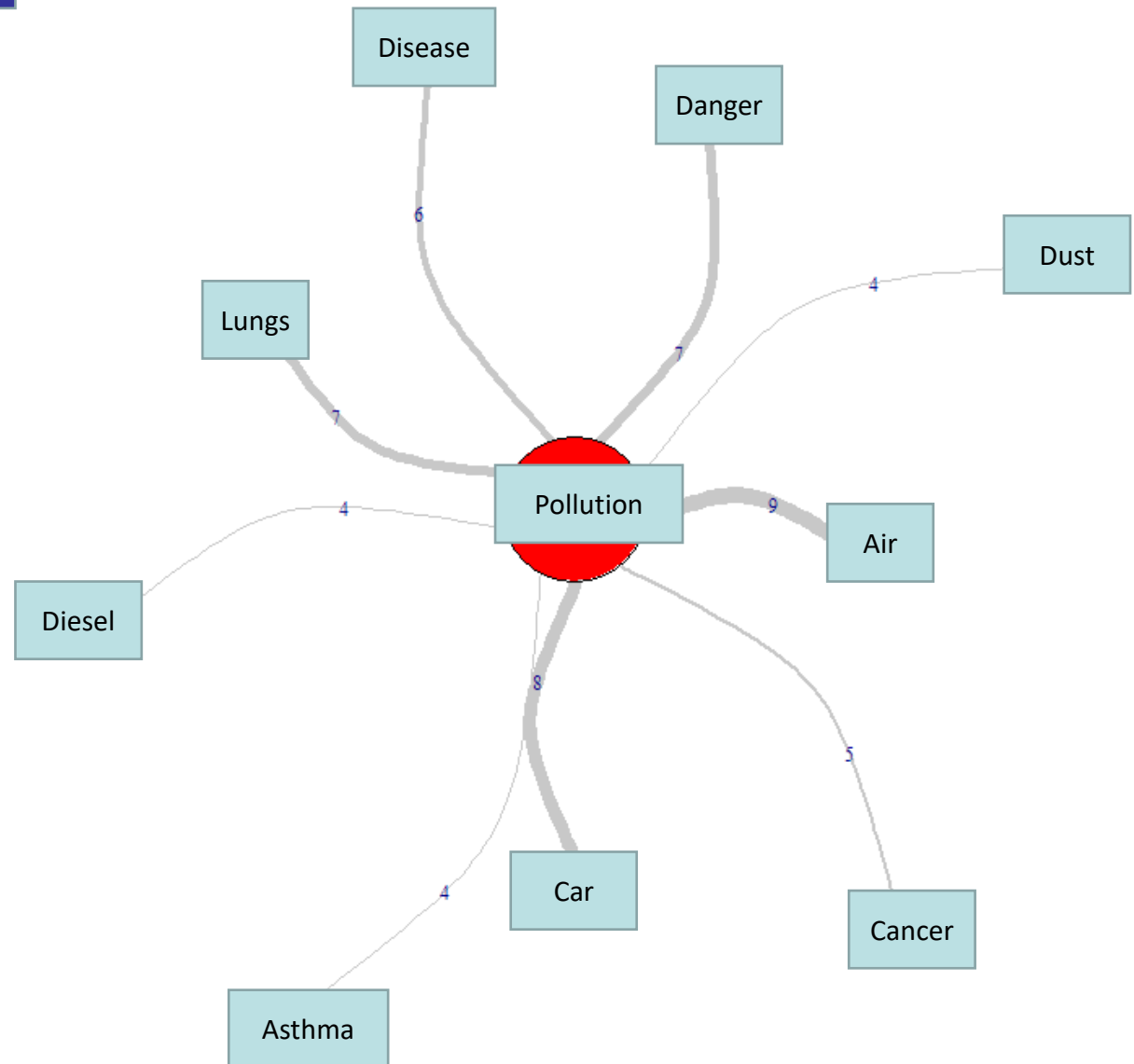
- ‘risk perception’ of settled dust
 - home, exterior, at school
 - Own kid, other kids
- **Knowledge** about settled dust
- Preventive **behaviour** → cleaning!
- **Parenting** style
- Trust in institutions

Qualitative pre-study to better target the “types” of household chores and those that are relevant for this study

VARIABLES

Results

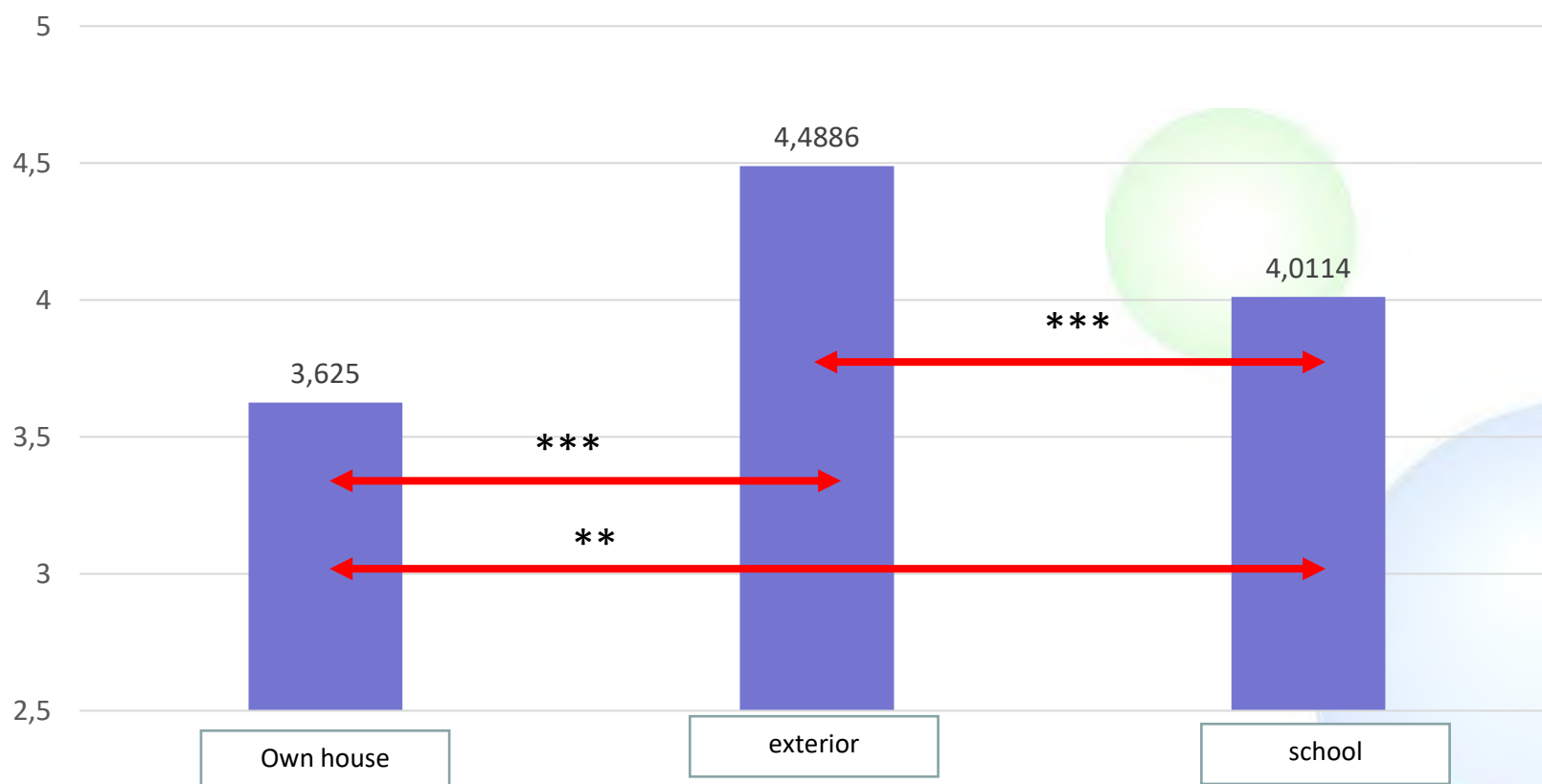
What are the first ideas that come to mind when you think about 'settled dust' (fine particles)



Results

Pre-study (end of first COVID lockdown, 2020)

Perception of the risk of exposure to fine particles



Results

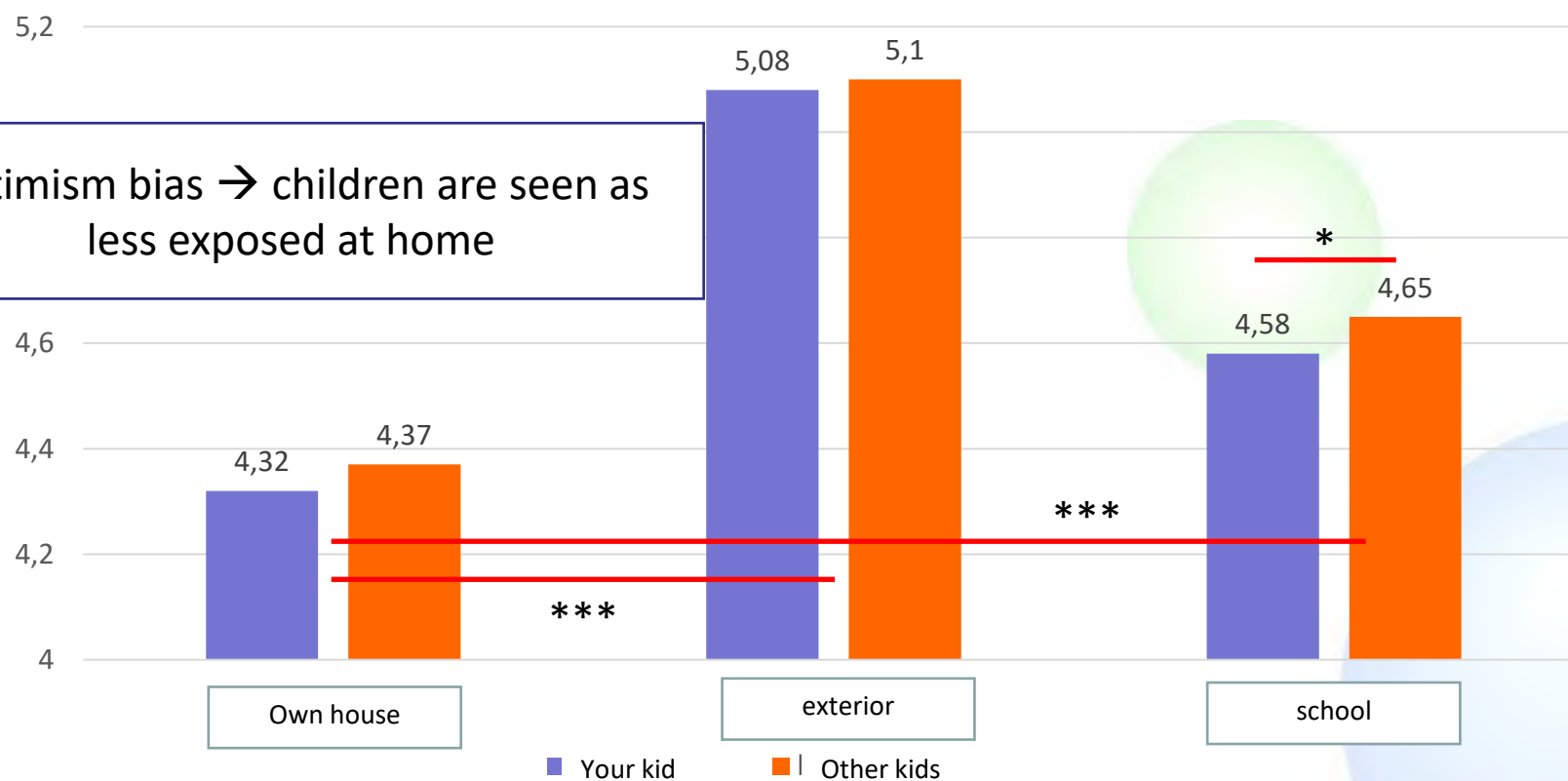
Study 1, 2021

Main effects

1. Optimism bias ($p < .05$)
2. proximity ($p < .001$)

Perception of the risk of exposure to fine particles

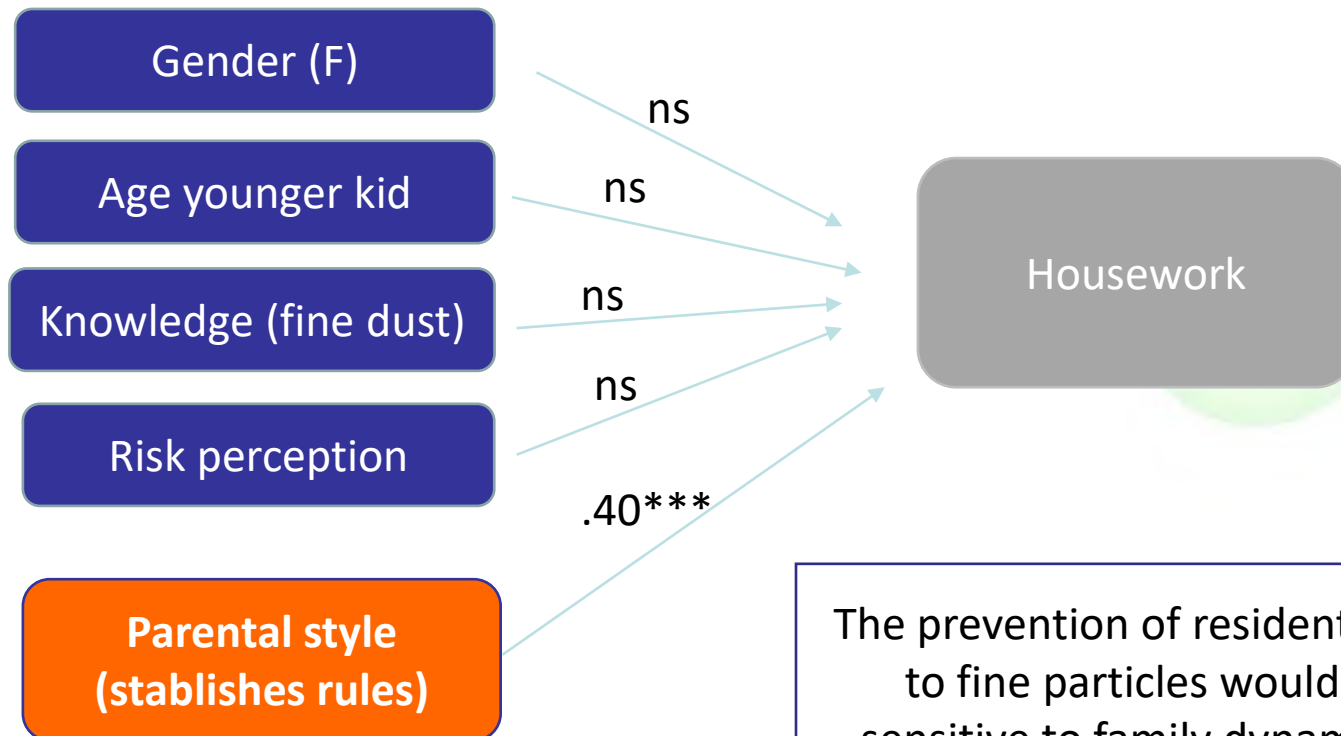
Optimism bias → children are seen as less exposed at home



Results

Regression analysis
housework (cleaning surfaces)

Campagne 2 – février-mars 2021



The prevention of residential exposure to fine particles would be more sensitive to family dynamics than to cognitive (knowledge) aspects.

- *Optimism bias*
 - Fine particles are seen as more dangerous **outside the household** – in contradiction with toxicological analysis
 - Impacts are regarded as relatively more important on other peoples' kids
- Weight of contextual over cognitive variables in explaining household practices (e.g. Aune, 2007; Bertoldo et al., 2015)
 - **Family dynamics** contextual factors largely shape behaviours with potential impacts on young children health