



HAL
open science

Ontogenetic instars of the oribatid mite *Scheloribates arszonensis* n. sp. (Acari, Oribatida, Scheloribatidae) from Ethiopia

Sergey G Ermilov, Leonid B Rybalov

► To cite this version:

Sergey G Ermilov, Leonid B Rybalov. Ontogenetic instars of the oribatid mite *Scheloribates arszonensis* n. sp. (Acari, Oribatida, Scheloribatidae) from Ethiopia. *Acarologia*, 2023, 63 (1), pp.122 - 135. 10.24349/o0ta-ustm . hal-03959308

HAL Id: hal-03959308

<https://hal.science/hal-03959308v1>

Submitted on 27 Jan 2023

HAL is a multi-disciplinary open access archive for the deposit and dissemination of scientific research documents, whether they are published or not. The documents may come from teaching and research institutions in France or abroad, or from public or private research centers.

L'archive ouverte pluridisciplinaire **HAL**, est destinée au dépôt et à la diffusion de documents scientifiques de niveau recherche, publiés ou non, émanant des établissements d'enseignement et de recherche français ou étrangers, des laboratoires publics ou privés.



Distributed under a Creative Commons Attribution 4.0 International License

Acarologia

A quarterly journal of acarology, since 1959
Publishing on all aspects of the Acari

All information:

<http://www1.montpellier.inra.fr/CBGP/acarologia/>
acarologia-contact@supagro.fr



**Acarologia is proudly non-profit,
with no page charges and free open access**

Please help us maintain this system by
encouraging your institutes to subscribe to the print version of the journal
and by sending us your high quality research on the Acari.

Subscriptions: Year 2023 (Volume 63): 450 €

<http://www1.montpellier.inra.fr/CBGP/acarologia/subscribe.php>

Previous volumes (2010-2021): 250 € / year (4 issues)

Acarologia, CBGP, CS 30016, 34988 MONTFERRIER-sur-LEZ Cedex, France

ISSN 0044-586X (print), ISSN 2107-7207 (electronic)

The digitalization of Acarologia papers prior to 2000 was supported by Agropolis Fondation under the reference ID 1500-024 through the « Investissements d'avenir » programme (Labex Agro: ANR-10-LABX-0001-01)



Acarologia is under free license and distributed under the terms of the Creative Commons-BY

Ontogenetic instars of the oribatid mite *Scheloribates arszonensis* n. sp. (Acari, Oribatida, Scheloribatidae) from Ethiopia

Sergey G. Ermilov ^a, Leonid B. Rybalov ^b

^a Institute of Environmental and Agricultural Biology (X-BIO), Tyumen State University, Tyumen, Russia.

^b Institute of Ecology and Evolution, Russian Academy of Sciences, Laboratory of Soil Zoology and General Entomology, Moscow, Russia.

Original research

ABSTRACT

A new species of the genus *Scheloribates* (Oribatida, Scheloribatidae) — *S. (Scheloribates) arszonensis* n. sp. — is described from Ethiopia, based on adult and juvenile instars, collected from litter and green moss in Arsi Mountains National Park. Adults of the new species differ from *S. praestantissimus praestantissimus* (Berlese, 1916) in having fusiform, distally pointed bothridial seta, the absence of prolamella, and the presence of well-developed notogastral setae p_1 . The comparison of juveniles of the new species with juveniles of other *Scheloribates* species is presented. Juveniles of the new species can be distinguished from the other known juveniles of *S. (Scheloribates)* by the presence of two strong, long, longitudinal, dorsolateral folds on the gastronotum in all instars, long gastronotic seta c_3 , which is distinctly longer than other gastronotic setae in nymphal instars, the presence of vestigial gastronotic seta h_3 in larva, and in the absence of aggenital setae in deutonymph.

Keywords scheloribatid mites; taxonomy; new species; morphology; juvenile instar; Afrotropical region

Zoobank <http://zoobank.org/974FC473-BCD3-40FE-A45C-865BABC4F4D3>

Introduction

The oribatid mite genus *Scheloribates* (Acari, Oribatida, Scheloribatidae) was proposed by Berlese (1908), with *Zetes latipes* Koch, 1844 as type species. According to Subías (2022), it comprises 282 species and 20 subspecies belonging to six subgenera, which have a cosmopolitan distribution.

The subgenus *Scheloribates (Scheloribates)* comprises 210 species and 19 subspecies (Subías 2022). The main subgeneric traits for adult can be found in: e.g., Pletzen (1963), Coetzer (1968), Corpus-Raros (1980), Balogh and Balogh (1990, 1992), Weigmann (2006), Bayartogtokh (2010), Ermilov and Anichkin (2014). The identification keys to selective species of the subgenus were presented in: e.g., Shaldybina (1975), Balogh and Balogh (1992), Weigmann (2006), Bayartogtokh (2010), Ermilov *et al.* (2011); Ermilov and Starý (2017). The development of *Scheloribates* was described (completely or partially) in nine known species and one unknown species (Norton and Ermilov 2014) (see General remarks below).


Presently, nine species of *Scheloribates (Scheloribates)* are registered in the Ethiopian fauna (e.g., Mahunka 1982; Ermilov *et al.* 2011, 2012; Ermilov and Rybalov 2018, 2019): *S. acutirostrum* Ermilov, Rybalov and Franke, 2011, *S. aethiopicus* Mahunka, 1982, *S. discifer*

Received 26 November 2022

Accepted 23 January 2023

Published 26 January 2023

Corresponding author

Sergey G. Ermilov 
ermilovacari@yandex.ru

Academic editor

Pfingstl, Tobias

<https://doi.org/10.24349/o0ta-ustm>

ISSN 0044-586X (print)

ISSN 2107-7207 (electronic)



Ermilov S. G. and Rybalov L. B.

Licensed under

Creative Commons CC-BY 4.0



How to cite this article Ermilov S. G. and Rybalov L. B. (2023), Ontogenetic instars of the oribatid mite *Scheloribates arszonensis* n. sp. (Acari, Oribatida, Scheloribatidae) from Ethiopia. *Acarologia* 63(1): 122-135. <https://doi.org/10.24349/o0ta-ustm>



Figure 1 Photographs showing the locus typicus of *Schelorbates arszonensis* n. sp. in the Arsi Mountains National Park.

Balogh, 1959, *S. fimbriatus* Thor, 1930, *S. latipes* (Koch, 1844), *S. leleupi* Balogh, 1959, *S. maximus* Balogh, 1962, *S. perisi* Pérez-Íñigo, 1982, *S. praeincisus* (Berlese, 1910).

In the course of taxonomic identification of materials collected from litter and green moss in Arsi Mountains National Park, Ethiopia (Fig. 1), we found a new species of *Schelorbates* (from nominate subgenus). The main goal of the paper is to describe and illustrate this new species based on adult and juvenile instars, and compare its juveniles with those of other *Schelorbates* species.

Methods

Sampling — Substrate samples (litter and mosses) containing oribatid mites were collected using a stainless-steel frame (50×50 cm) with a sieve (mesh size 2×2 cm). Mites were extracted into 75% ethanol using Berlese's funnels with electric lamps in laboratory conditions (in Institute of Ecology and Evolution, Moscow, Russia). The collection locality is provided in the **Material examined** section.

Juvenile specimens were associated with adults using criteria outlined by Norton & Ermilov (2014). In particular, they were found in the same samples and had appropriate size and proportions. If more than one similar-sized species was represented in a sample, juveniles

were ignored.

Observation and documentation — Specimens were mounted in lactic acid on temporary cavity slides for measurement and illustration. Body length was measured in lateral view, from the tip of the rostrum to the posterior edge of the notogaster (in adult)/gastronotic region (in juveniles). Notogastral/gastronotic width refers to the maximum width of the notogaster in adult (behind pteromorphs) and gastronotic region (in juveniles) in dorsal view. Lengths of body setae were measured in lateral aspect. All body measurements are presented in micrometers. Formulas for leg setation are given in parentheses according to the sequence trochanter-femur-genu-tibia-tarsus (famulus included). Formulas for leg solenidia are given in square brackets according to the sequence genu-tibia-tarsus. Drawings were made with a camera lucida using a Leica transmission light microscope “Leica DM 2500”.

Terminology — Morphological terminology used in this paper follows that of Grandjean: see Travé and Vachon (1975) for references; Norton (1977) for leg setal nomenclature; and Norton and Behan-Pelletier (2009) for overview.

Abbreviations — Prodorsum: *lam* = lamella; *tlam* = translamella; *slam* = sublamella; *Al* = sublamellar porose area; *kf* = keel-shaped ridge; *lc* = lateral carina; *pc* = postbothridial carina; *ro*, *le*, *in*, *bs*, *ex* = rostral, lamellar, interlamellar, bothridial, and exobothridial seta, respectively; *D* = dorsophragma; *P* = pleurophragma. Notogaster/Gastronotic region: *c*, *da*, *dm*, *dp*, *la*, *lm*, *lp*, *h*, *p* = setae; *Sa*, *S1*, *S2*, *S3* = sacculi; *ecl* = ecdysial cleavage line (line of dehiscence); *gf* = gastronotic fold; *ia*, *im*, *ip*, *ih*, *ips* = lyrifissures/cupules; *gla* = opisthotal gland opening. Gnathosoma: *a*, *m*, *h* = anterior, middle seta of gena and hypostomal seta of mentum, respectively; *or* = adoral seta; *d*, *l*, *cm*, *acm*, *ul*, *su*, *lt*, *vt*, *inf*, *sup* = palp setae; ω = palp tarsal solenidion; *ep* = postpalpal seta; *p.a.* = porose area; *cha*, *chb* = cheliceral setae; *Tg* = Trägårdh’s organ. Epimeral and lateral podosomal regions: *Cl* = Claparède’s organ; *1a*, *1b*, *1c*, *2a*, *3a*, *3b*, *3c*, *4a*, *4b*, *4c* = setae; *z* = aperture of supracoxal gland; *PdI*, *PdII* = pedotectum I and II, respectively; *dis* = discidium; *cir* = circumpedial carina. Anogenital region: *g*, *ag*, *an*, *ad* = genital, aggenital, anal, and adanal seta, respectively; *iad* = adanal lyrifissure/cupule; *Amar* = marginal porose area; *p.o.* = preanal organ. Legs: *Tr*, *Fe*, *Ge*, *Ti*, *Ta* = trochanter, femur, genu, tibia, tarsus, respectively; *trt* = trochanteral tooth; ω , ϕ , σ = solenidia; ε = famulus; *d*, *l*, *v*, *bv*, *ev*, *ft*, *tc*, *it*, *p*, *u*, *a*, *s*, *pv*, *pl*, = setae; *p.a.* = porose area. Instars: LA = larva; PN, DN, TN = proto-, deuto- and tritonymph, respectively; AD = adult.

Taxonomy

Family Scheloribatidae Jacot, 1935

Genus *Scheloribates* Berlese, 1908

Scheloribates arszonensis n. sp.

Zoobank: E8A5C7BD-7725-45C9-BD85-CA94E8C231C0

(Figures 2-7)

Diagnosis — (adult) Body length: 675–735 × 450–510. Rostrum protruding, rounded. Prolamella absent; translamella represented by two short ridges. Rostral, lamellar and interlamellar setae long, setiform, barbed; *ro* shortest, *in* longest; exobothridial seta minute, simple; bothridial seta comparatively short, fusiform, pointed distally, barbed. Anterior notogastral margin convex medially. One pair of simple notogastral setae (p_1) developed; other setae represented by alveoli. All epimeral setae setiform, slightly barbed. Circumpedial carina comparatively long. All anogenital setae setiform, slightly roughened. Marginal porose area complete. Ventroantiaxial part of trochanter III with tooth.

Description of adult — (Figures 2a-d, 3a-g) Measurements – Body length: 705 (holotype: female), 675–735 (43 paratypes: 21 males and 22 females); body width: 465 (holotype), 450–510 (43 paratypes). No differences between males and females in body size.

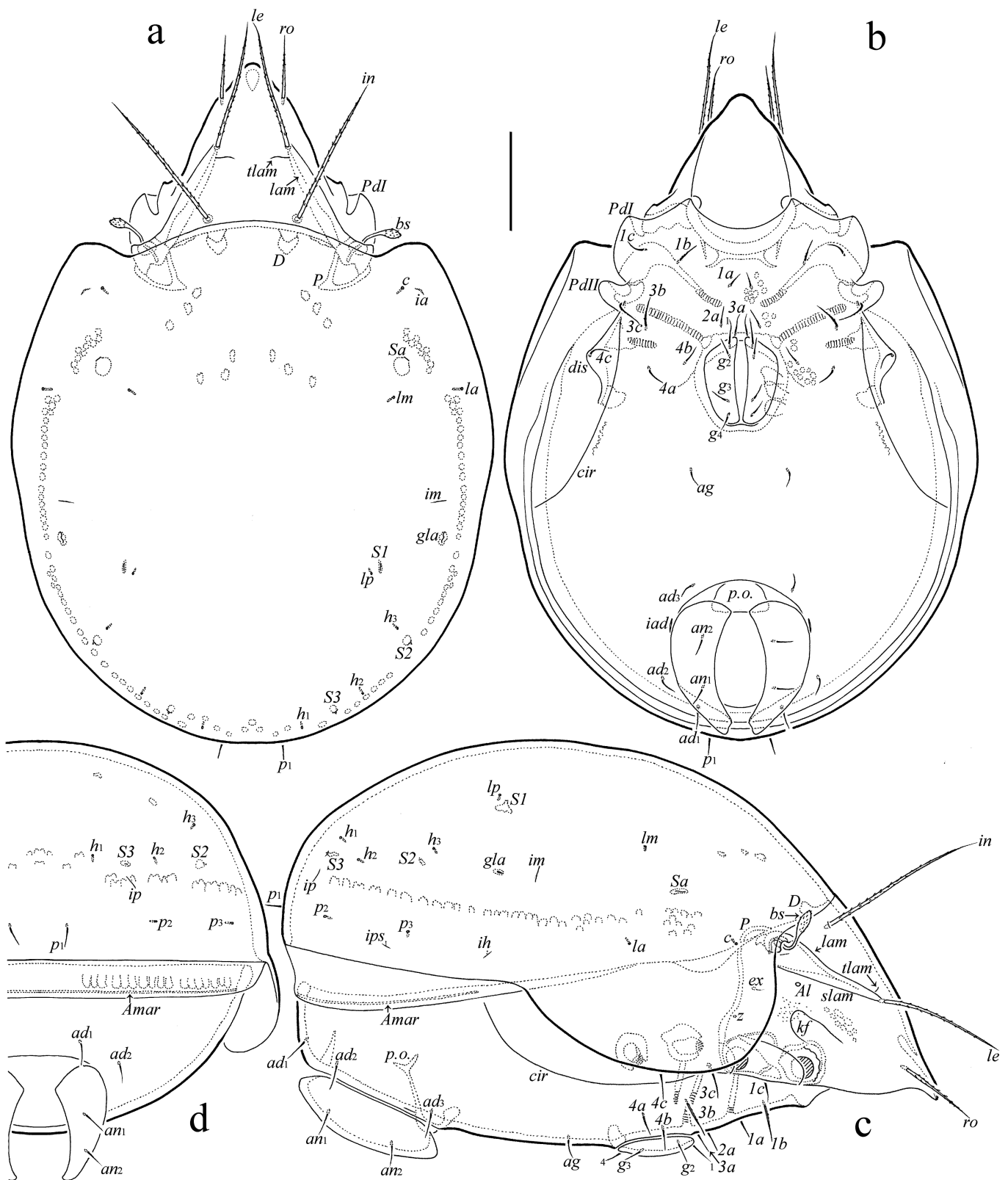


Figure 2 *Schelorbates arsizonensis* n. sp., adult: a – dorsal view (legs omitted); b – ventral view (gnathosoma and legs omitted); c – right lateral view (gnathosoma and legs omitted); d – posterior view. Scale bar 100 µm.

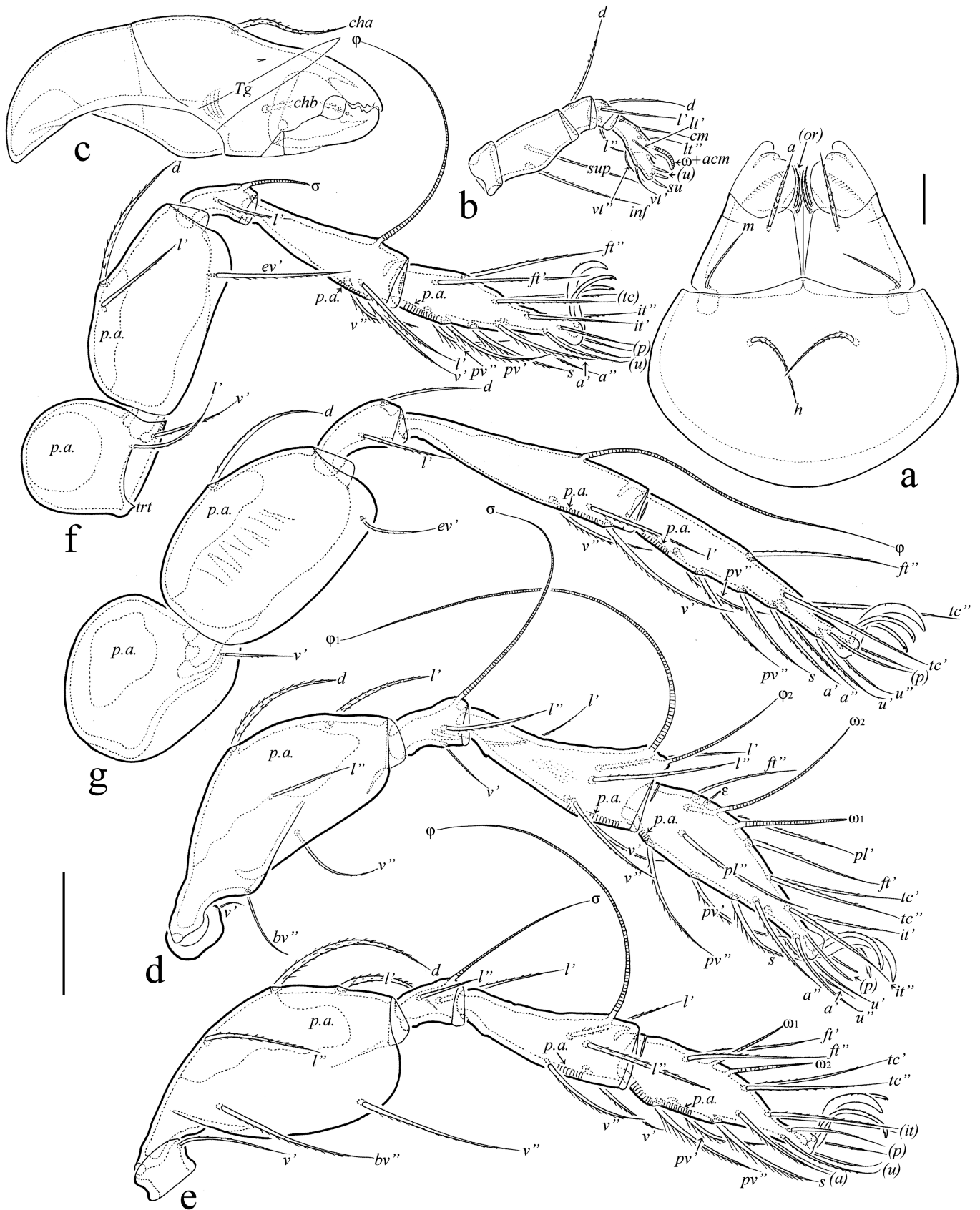


Figure 3 *Schelorbates arszonensis* n. sp., adult: a – subcapitulum, ventral view; b – palp, left, paraxial view; c – chelicera, left, paraxial view; d – leg I, right, antiaxial view; e – leg II, right, antiaxial view; f – leg III, left, antiaxial view; g – leg IV, left, antiaxial view. Scale bars 20 μm (a-c), 50 μm (d-g).

Integument – Body color brown. Cuticle microsculpturing granulate (visible in dissected specimens under high magnification, $\times 1000$); lateral part of body (between sublamella and pedotecta I, II) with granulate cerotegument.

Prodorsum (Figures 2a, c) – Rostrum slightly protruding, narrowly rounded. Lamella about 1/2 length of prodorsum; prolamella absent; sublamella similar to lamella in length; sublamellar porose area rounded (6); translamella represented by two short ridges developed near lamellae. Rostral (76–94), lamellar (124–161) and interlamellar (180–221) setae setiform, barbed; exobothridial seta (9–11) setiform, smooth, often directed backwards; bothridial seta comparatively short (60–71), with fusiform, pointed distally, barbed head. Dorsosejugal porose area diffuse. Dorsophragma slightly elongate.

Notogaster (Figures 2a, c, d) – Anterior notogastral margin slightly convex medially. One pair of notogastral setae (p_1 : 15–22) developed, setiform, smooth; other setae represented by alveoli. Four pairs of sacculi drop-like. Opisthonotal gland opening and all lyrifissures distinct.

Gnathosoma (Figures 3a-c) – Subcapitulum size: 142–150 \times 116–130; subcapitular (a : 30–34; m : 28–30; h : 37–41) and adoral (19) setae setiform, barbed; m thinner than a and h . Palp (length: 82–90) setation: 0-2-1-3-9 (+ ω); solenidion bacilliform, not swollen distally; postpalpal seta (9) spiniform, roughened. Chelicera (length: 161–169) with two setiform, barbed setae (cha : 52–56; chb : 35–37).

Epimeral and lateral podosomal regions (Figures 2b, c) – Epimeral formula: 3-1-3-3; setae ($1b$, $3b$: 37–41; $3c$: 30–34; others: 19–26) setiform, slightly barbed. Pedotectum II rounded distally in ventral aspect. Discidium triangular, rounded distally. Circumpedial carina comparatively long, anteriorly directed to pedotectum II.

Anogenital region (Figures 2b-d) – Genital (g_1 : 26–30; g_2 – g_4 : 19–26), aggenital (19–26), anal (19–26), and adanal (22–30) setae setiform, slightly roughened. Adanal lyrifissure distinct. Marginal porose area complete, narrowly band-like.

Legs (Figures 3d-g) – Median claw distinctly thicker than lateral claws; all claws slightly barbed on dorsal side; lateral claws with small tooth distoventrally. Ventroantiaxial part of trochanter III with tooth; tibiae I, II with slightly developed tubercle proximoventrally. Dorsoparaxial porose area on femora I-IV and on trochanters III, IV, proximoventral porose area on tarsi I-IV, and distoventral porose area on tibiae I-IV well visible. Formulas of leg setation and solenidia: I (1-5-3-4-18) [1-2-2], II (1-5-2-4-15) [1-1-2], III (2-3-1-3-15) [1-1-0], IV (1-2-2-3-12) [0-1-0]; homology of setae and solenidia indicated in Table 1; famulus short, slightly swollen distally, inserted posterior to solenidion ω_2 ; solenidion ω_1 on tarsus I and σ on genu III slightly bacilliform, ω_1 and ω_2 on tarsus II rod-like; other solenidia setiform.

Description of juvenile instars — (Figures 4a-c, 5a, b, 6a-c, 7a-h) Measurements – Total length of larva: 315–330 ($n=5$), protonymph: 390–420 ($n=4$), deutonymph: 465–510 ($n=12$), tritonymph: 555–645 ($n=20$); total width of larva: 135–150 ($n=5$), protonymph: 195–210 ($n=4$), deutonymph: 210–240 ($n=12$), tritonymph: 270–375 ($n=20$).

Integument (Figures 4a-c, 5a, b, 6a-c, 7a-c) – Body colorless to light yellowish, legs, gastronomic sclerites, lateral parts of epimeres, and dorsal prodorsal sclerite light brown in deuto- and tritonymphs. Body surface densely porose (visible under high magnification in dissected specimens); additionally, gastronomic and anogenital region slightly folded; gastronomic region with two strong, long, longitudinal, dorsolateral folds.

Prodorsum (Figures 4a, c, 5a, b, 6a, c) – Relatively short, about 1/2 (in larva) and 1/3 (in nymphal instars) length of gastronomic region. Rostrum rounded. Dorsal side of prodorsum with large sclerite bordered by lateral and postbothridial carinae. Rostral (LA: 34–37; PN: 41–45; DN: 53–57; TN: 64–67), lamellar (LA: 41–45; PN: 60–64; DN: 82–86; TN: 116–120) and interlamellar (LA: 60–64; PN: 97–105; DN: 131–139; TN: 172–176) setae setiform, barbed; exobothridial seta (LA: 1; PN: 2; DN, TN: 4) simple, smooth; bothridial seta (LA: 26–30; PN: 30–34; DN: 41–45; TN: 52–56) clavate, rounded distally, barbed.

Gastronomic region (Figures 4a-c, 5a, b, 6a-c, 7a, b) – Posteriorly rather rounded. Nymphal instars with distinct ecdysial cleavage line (line of dehiscence). Larva with 12, nymphal instars with 15 pairs of setiform (except h_3 represented by alveolus in LA), slightly barbed setae; setae

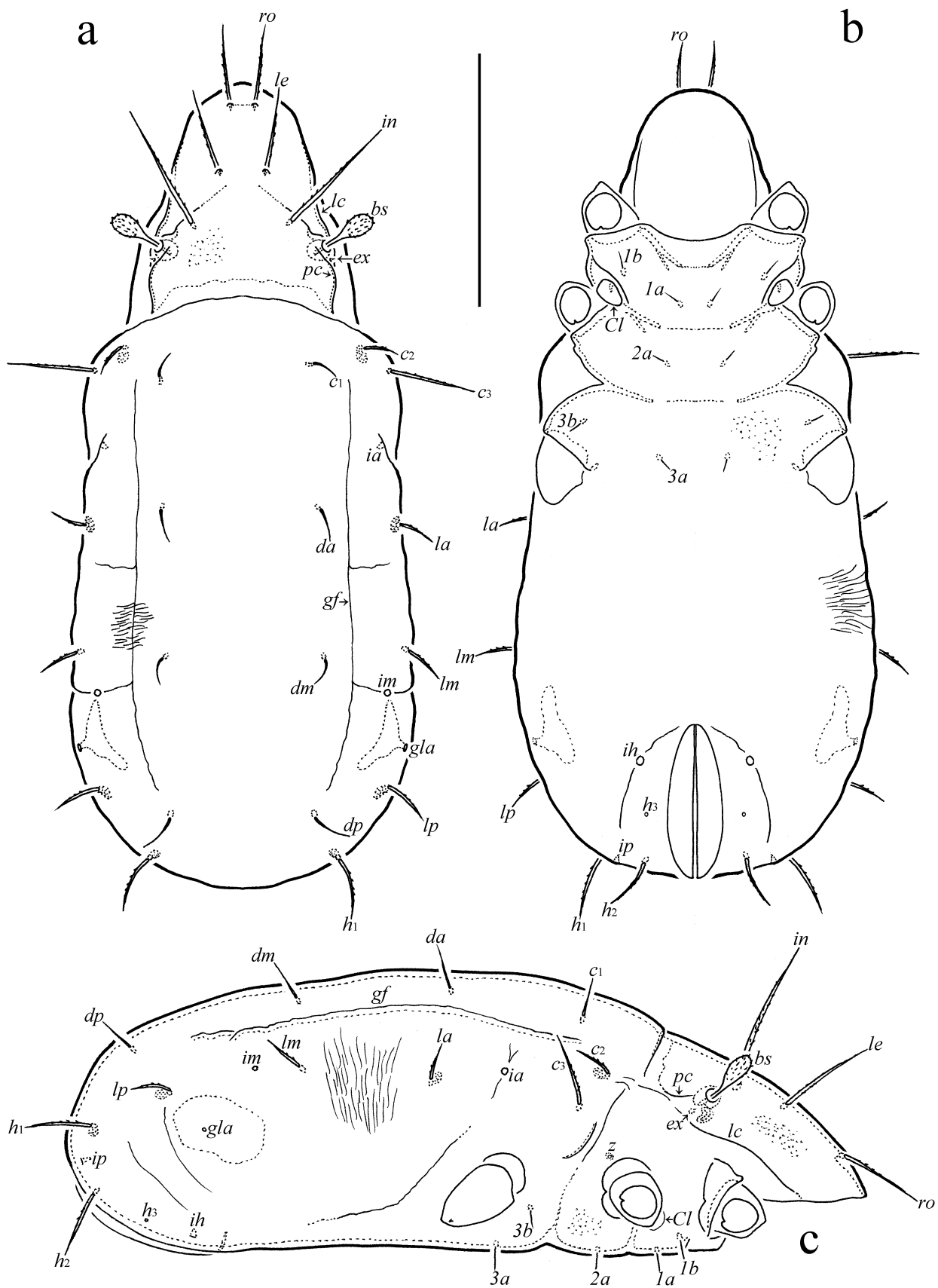


Figure 4 *Schelorbates arizonensis* n. sp., larva: a – dorsal view (legs omitted); b – ventral view (gnathosoma and legs except trochanters omitted); c – right lateral view (gnathosoma and legs except trochanters omitted). Scale bar 100 μ m.

c_1 , da , dm , dp thinner than others in larva; relative thickness of gastronotic setae in nymphal instars: $c_3 > c_2 > \text{others}$; all setae with sclerite at the base, large sclerites at the base of c_2 , la , lp , h_1 in larva, c_2 , la , lp , h_2 , h_3 in protonymph, c_2 , la , lp , h_2 , h_3 , p_1 in deuto- and tritonymphs. Length of gastronotic setae: LA: c_3 : 32–34, h_1 , h_2 : 26–30, others: 17–22; PN: c_3 : 71–75, c_2 : 22–26, others: 17–22; DN: c_3 : 86–90, c_2 : 26–30, others: 22–26; TN: c_3 : 105–131, c_2 : 26–37, lp , h_1 , h_2 , h_3 , p_1 , p_2 , p_3 : 19–22, others: 26–30. Opisthonotal gland opening and all cupules distinct.

Gnathosoma (Figures 7c, d) – Subcapitulum size: LA: 57×49 ; PN: $67-71 \times 60-64$; DN: $86-90 \times 79-82$; TN: $105-109 \times 97-101$; length of subcapitular setae a , h : LA, PN: 15; DN: 17–19; TN: 22–26; length of subcapitular seta m : LA, PN: 11; DN: 13–15; TN: 17–19; length of adoral seta: LA, PN: 7; DN: 9–11; TN: 11–13; all subcapitular and adoral setae setiform, slightly barbed. Posterolateral part of subcapitular mentum with porose area. Palp length: LA: 34; PN: 45; DN: 52–56; TN: 64–67; palp formula: 0-2-1-3-9(+ ω); solenidion connected with eupathidium in all instars; length of postpalpal seta: LA, PN: 4; DN, TN: 5–7. Chelicera length: LA: 56; PN: 75–82; DN: 94–97; TN: 112; length of seta cha : LA: 22; PN: 30; DN: 34–37; TN: 41–43; length of seta chb : LA: 15; PN: 19; DN: 20–22; TN: 26; both cheliceral setae setiform, barbed.

Epimeral and lateral podosomal regions (Figures 4b, c, 5a, b, 6b, c) – Setal formulas for epimeres: larva: 3-1-2 (lc as typical scale covering Claparède’s organ); protonymph 3-1-2-1; deutonymph 3-1-2-2, tritonymph 3-1-3-3; length of setae: LA: 9–11; PN: 11–13; DN: 13–19; TN: 19–22; all setae setiform, slightly roughened.

Table 1 Leg setation and solenidia of adult *Scheloribates arszonensis* n. sp.

	<i>Tr</i>	<i>Fe</i>	<i>Ge</i>	<i>Ti</i>	<i>Ta</i>
Leg I					
LA	–	d, bv''	$(l), \sigma$	$(l), v', \varphi_1$	$(ft), (tc), (p), (u), (a), s, (pv), (pl), \varepsilon, \omega_1$
PN	–	–	–	–	ω_2
DN	–	l'	–	φ_2	–
TN	v'	v''	– or v'	v''	(it)
AD	–	l''	– or v'	–	–
Leg II					
LA	–	d, bv''	$(l), \sigma$	$l', v' \varphi$	$(ft), (tc), (p), (u), (a), s, (pv), \omega_1$
PN	–	–	–	–	–
DN	–	l'	–	–	ω_2
TN	v'	v''	–	v''	(it)
AD	–	l''	–	l''	–
Leg III					
LA	–	d, ev'	l', σ	v', φ	$(ft), (tc), (p), (u), (a), s, (pv)$
PN	–	–	–	–	–
DN	v'	–	–	–	–
TN	–	–	–	v''	(it)
AD	l'	l'	–	l'	–
Leg IV					
PN	–	–	–	–	$ft'', (p), (u), (pv)$
DN	–	d, ev'	d	v', φ	$(tc), (a), s$
TN	–	–	l'	v''	–
AD	v'	–	–	l'	–

Note: Roman letters refer to normal setae, Greek letters refer to solenidia (except ε — famulus). Single quotation mark (') designates setae on the anterior and double quotation (") setae on the posterior side of a given leg segment. Parentheses indicate addition of both members of a pseudosymmetrical pair. Setae and solenidia are listed for the instar in which they first appear and should be presumed present for the remainder of ontogeny.

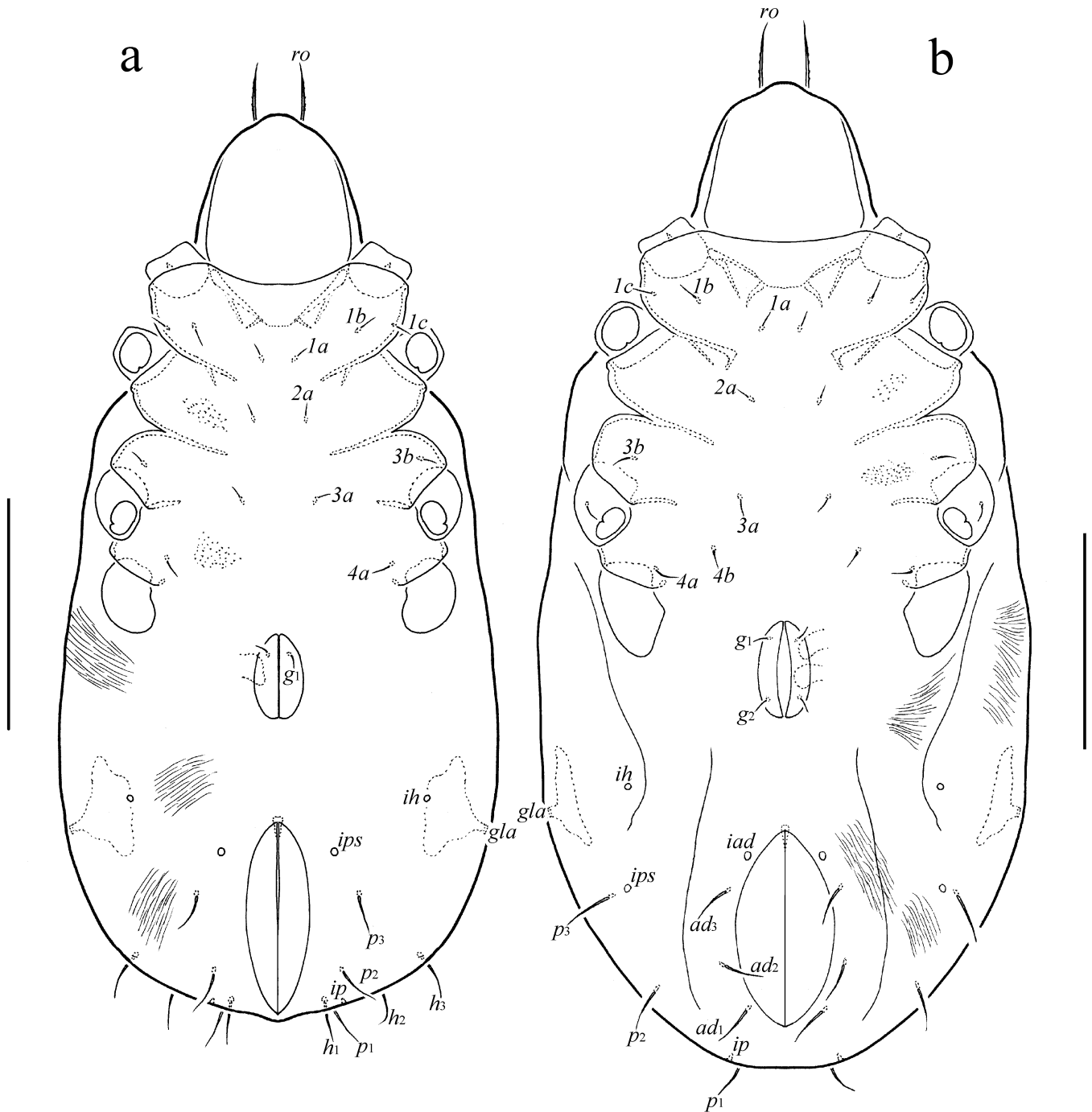


Figure 5 *Scheloribates arszonensis* n. sp., nymphs: a – protonymph, ventral view (gnathosoma and legs except trochanters omitted); b – deutonymph, ventral view (gnathosoma and legs except trochanters omitted). Scale bars 100 μm.

Anogenital region (Figures 4b, c, 5a, b, 6b, c, 7a, b) – Ontogeny of genital (PN: 11–13; DN: 13–19; TN: 17–19), aggenital (TN: 17–19), anal (TN: 17–19), and adanal (DN: 19–22; TN: 26) setal formulas, proto- to tritonymph: 1-2-3, 0-0-1, 0-0-2, 0-2-2, respectively; all setae setiform, roughened; paraproctal setae absent. There is an unusual development of aggenital setae: they only appear in tritonymph instead in deutonymph. Adanal cupule distinct; anal cupule not observed.

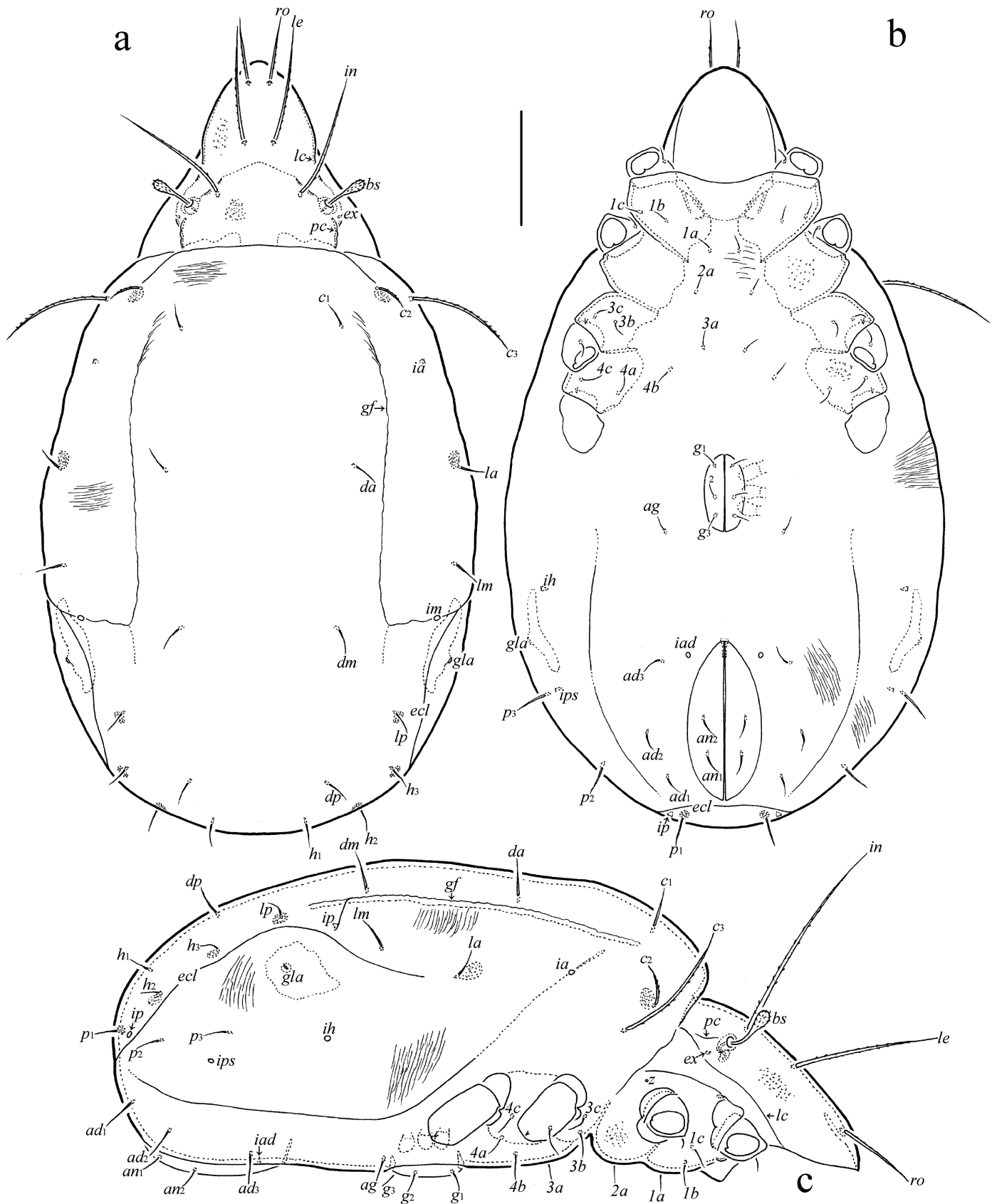


Figure 6 *Schelorbates arszonensis* n. sp., tritonymph: a – dorsal view (legs omitted); b – ventral view (gnathosoma and legs except trochanters omitted); c – right lateral view (gnathosoma and legs except trochanters omitted). Scale bar 100 μ m.

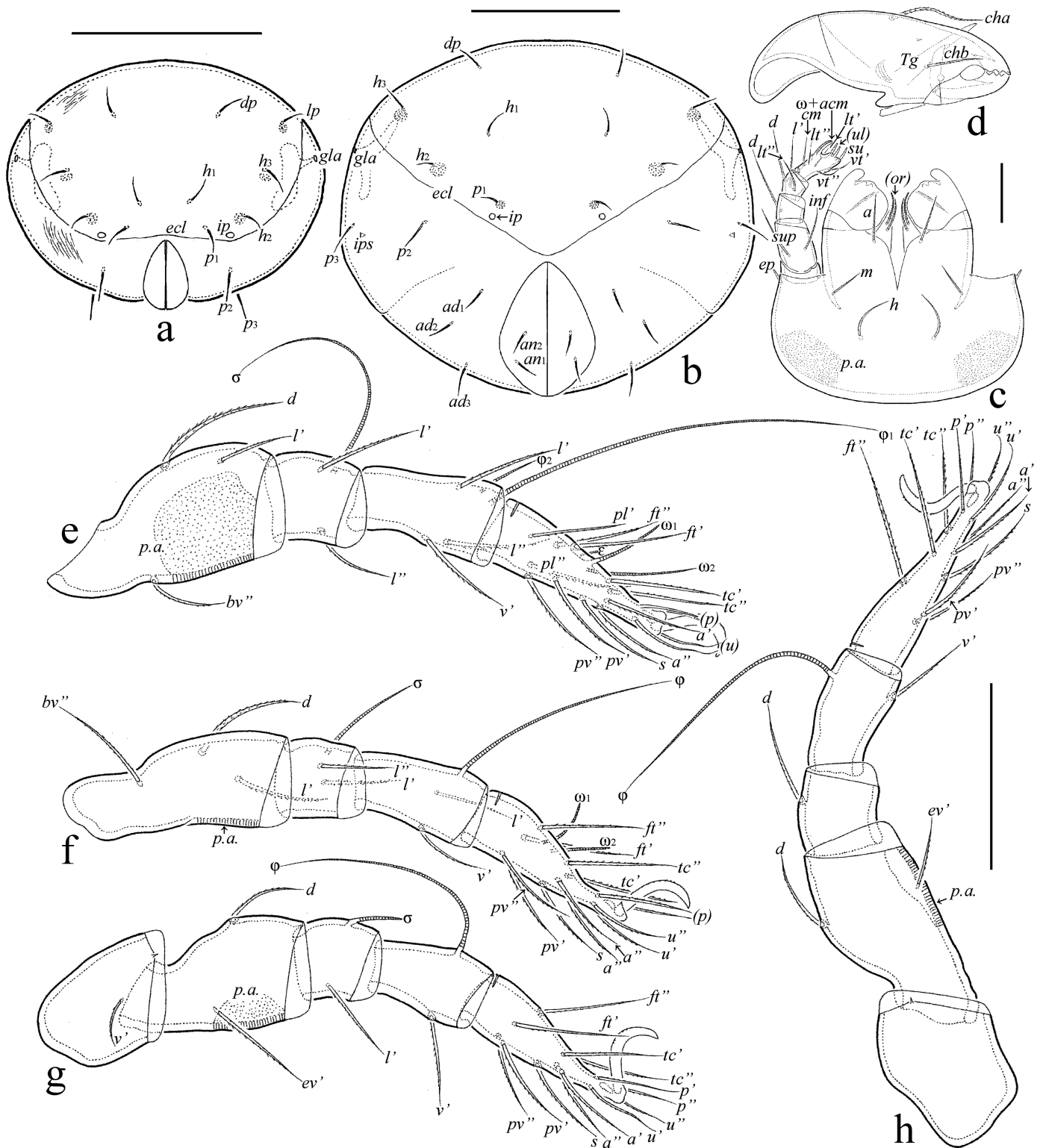


Figure 7 *Scheloribates arizonensis* n. sp., nymphs: a – protonymph, posterior view; b – tritonymph, posterior view; c – deutonymph, subcapitulum, ventral view, and palp, right, antiaxial view; d – deutonymph, chelicera, right, antiaxial view; e – deutonymph, leg I, without trochanter, left, paraxial view; f – leg II, without trochanter, right, antiaxial view; g – leg III, left, antiaxial view; h – leg IV, left, antiaxial view. Scale bars 100 μ m (a, b), 20 μ m (c, d), 50 μ m (e-h). Scale bar 50 μ m.

Legs (Figures 7e-h) – Claw of each leg dorsally slightly barbed. Femora I-IV with distoventral porose area. Formulas of leg setation and solenidia: larva I (0-2-2-3-16) [1-1-1], II (0-2-2-2-13) [1-1-1], III (0-2-1-1-13) [1-1-0]; protonymph I (0-2-2-3-16) [1-1-2], II (0-2-2-2-13) [1-1-1], III (1-2-1-1-13) [1-1-0], IV (0-0-0-0-7) [0-0-0]; deutonymph I (0-3-2-3-16) [1-2-2], II (0-3-2-2-13) [1-1-2], III (1-2-1-1-13) [1-1-0], IV (0-2-1-1-12) [0-1-0]; tritonymph I (1-4-2[or 3]-4-18) [1-2-2], II (1-4-2-3-15) [1-1-2], III (1-2-1-3-15) [1-1-0], IV (0-2-2-2-12) [0-1-0]; homologies of setae and solenidia indicated in Table 1.

Material examined — Holotype (female), 43 paratypes (21 males and 22 females) and 41 juvenile instars (five larvae, four protonymphs, 12 deutonymphs, 20 tritonymphs): Ethiopia, Oromia Region, Arsi Zone, Arsi Mountains National Park, 07°17'49"N, 039°23'40"E, 3847 m a.s.l., litter and green moss *Rhytidiadelphus triquetrus* under mixed plants (*Erica arborea*, *Helichrysum* spp., *Lobelia rhynchopetalum* [giant lobelia], *Alchemilla pedata*, *Haplocarpha rueppelii*) (Fig. 1), 03.12.2021 (L.B. Rybalov).

Type deposition — The holotype and two paratypes are deposited in the collection of the Senckenberg Museum of Natural History, Görlitz, Germany; 41 paratypes and juvenile instars are deposited in the collection of the Tyumen State University Museum of Zoology, Tyumen, Russia. All specimens are preserved in 70% solution of ethanol with a drop of glycerol.

Etymology — The species name *arsizonensis* refers to the Arsi Zone, where the new species was collected.

Remarks — Although, *Scheloribates* is a large genus (210 species and 19 subspecies) and contains many similar species, adults of *S. arszonensis* **n. sp.** can be distinctly distinguished from other representatives of the genus by the combination of morphological traits, e.g.: 1) body large: 675–735; 2) distinct sculpturing and ornamentation absent; 3) rostrum protruding, rounded; 4) prolamella absent; 5) translamella present, represented by two short ridges; 6) rostral, lamellar and interlamellar setae long, setiform, barbed, *in>le>ro*; 7) bothridial seta comparatively short, fusiform, pointed distally, barbed; 8) anterior notogastral margin convex medially; 9) one pair of notogastral setae (p_1) developed, others represented by alveoli. The new species is morphologically most similar to *Scheloribates praestantissimus praestantissimus* (Berlese, 1916) from Somalia (see Berlese 1916; Mahunka and Mahunka-Papp 1995) in having large body size, protruding, rounded rostrum, long rostral, lamellar and interlamellar setae (with relative length: *in>le>ro*), interrupted medially translamella, and the comparatively short bothridial seta, but differs from the later in having fusiform, pointed distally (versus clavate, rounded distally) bothridial seta, the absence (versus presence) of prolamella, and the presence (versus represented alveoli) of well-developed notogastral setae p_1 .

General remarks

Main ontogenetic transformations in juvenile instars — *Measurements*. Size of body increases with each successive instar; length from 315–330 in larva to 555–645 in tritonymph. *Integument*. Body of colorless to light yellowish but legs, gastronomic sclerites, lateral parts of epimeres, and dorsal prodorsal sclerite light brown in deuto- and tritonymphs. Cuticle porose; additionally, gastronomic and anogenital region folded; gastronomic region with two strong, long, longitudinal, dorsolateral folds. *Prodorsum*. Rostrum rounded. Lateral and postbothridial carinae present. With five pairs of prodorsal setae: rostral, lamellar and interlamellar long, setae setiform, barbed; exobothridial seta minute, simple; relative length: *in>le>ro>ex*; bothridial seta clavate, barbed. *Gastronotum*. Elongate oval in dorsal view. Larva with 12, nymphal instars with 15 pairs of setiform (except h_3 represented by alveolus in LA), slightly barbed setae; c_3 , h_1 , h_2 longest in larva versus c_3 longest in nymphal instars; all setae with sclerite at the base but well visible only large sclerites at the base of c_2 , la , lp , h_1 in LA, c_2 , la , lp , h_2 , h_3 in PN, c_2 , la , lp , h_2 , h_3 , p_1 in DN and TN. *Gnathosoma*. Subcapitulum with three pairs of subcapitular and two pairs of adoral setae; all setiform, barbed. Palp formula: 0-2-1-3-9(+ ω); solenidion connected with eupathidium. Both cheliceral setae setiform, barbed. *Epimeral and lateral podosomal regions*. Larva with six ($1a$, $1b$, $1c$, $2a$, $3a$, $3b$), protonymph with seven (plus

4a), deutonymph with eight (plus 4b), tritonymph with 10 (plus 3c and 4c) pairs of epimeral setae. *Anogenital region*. In protonymph, one pair of genital setae; in deutonymph, one pair of genital and three pairs of adanal setae added; in tritonymph, one pair of genital, one pair of aggenital and two pairs of anal setae added; paraproctal valves without setae. *Legs*. Juvenile instars monodactylous; leg setation increasing from instar to instar as shown in Table 1.

Comparison of juvenile instars — As noted above, the ontogeny of juvenile instars in *Scheloribates* was described in nine known species and one unknown species but the morphology of juvenile instars are known (completely or partially) only for seven representatives (see Norton and Ermilov 2014 for explanations and references): 1) *S. (Hemileius) initialis* (Berlese, 1908); 2) *S. (H.) nicki* (Denmark and Woodring, 1965); 3) *S. (S.) laevigatus* (Koch, 1835); 4) *S. (S.) latipes* (Koch, 1844); 5) *S. (S.) nudus* Woodring, 1965; 6) *S. (S.) pallidulus* (Koch, 1841); and 7) *S. (Topobates) holsaticus* (Weigmann, 1969).

In general, juveniles of *Scheloribates* are similar to each other, however, larva and nymphal instars of *S. arszonensis* **n. sp.** can be distinguished from those of the other above listed species by the: 1) presence of two strong, long, longitudinal, dorsolateral folds on the gastronotum in all instars; 2) long gastronotic seta c_3 which is distinctly longer than other gastronotic setae in nymphal instars; 3) presence of vestige of gastronotic seta h_3 in larva; 4) absence of aggenital setae in deutonymph.

Acknowledgements

The work was performed within the framework of the Joint Russian-Ethiopian Biological Expedition, financially supported by the Russian Academy of Sciences. We are grateful to Dr. Gezahegn Degefe for supporting the field studies and organizing laboratory works and two anonymous reviewers for valuable comments. Collecting of materials was conducted under the current Agreement of 17.12.2020 between the Russian Academy of Sciences and the Ministry of Science and Technology (Ministry Innovation and Technology) of the Federal Democratic Republic of Ethiopia. This research was supported by the cooperative agreement No. FEWZ-2021-0004 from the Russian Ministry of Science and Higher Education.

ORCID

Sergey G. Ermilov  <https://orcid.org/0000-0002-0913-131X>

Leonid B. Rybalov  <https://orcid.org/0000-0002-1121-1183>

References

- Balogh J. 1959. Oribates (Acari) nouveaux d'Angola et du Congo Belge (1ère série). Companhia de Diamantes de Angola. Lisboa, 48: 91-108.
- Balogh J. 1962. Mission zoologique de l'I.R.S.A.C. en Afrique orientale (P. Basilevsky et N. Leleup, 1957). LXXV. Acari Oribates. Annales du Musée Royal de l'Afrique Centrale Tervuren Belgium, Zoologie, 110: 90-131.
- Balogh J., Balogh P. 1990. Oribatid mites of the Neotropical region. II. Budapest: Akadémiai Kiadó Press. 333 p.
- Balogh J., Balogh P. 1992. The oribatid mite genera of the World. Vol. 1. Budapest: Hungarian National Museum Press. 263 p.
- Bayartogtokh B. 2010. Oribatid mites of Mongolia (Acari: Oribatida). Moscow: KMK. 372 p.
- Berlese A. 1908. Elenco di generi e specie nuove di Acari. Redia, 5: 1-15.
- Berlese A. 1910. Brevi diagnosi di generi e specie nuovi di Acari. Redia, 6: 346-388.
- Berlese A. 1916. Centuria terza di Acari nuovi. Redia, 12: 289-338.
- Coetzer A. 1968. New Oribatulidae Thor, 1929 (Oribatei, Acari) from South Africa, new combinations and a key to the genera of the family. Memórias do Instituto de Investigação Científica de Moçambique, 9(A): 15-126.
- Corpuz-Raros L. 1980. Philippine Oribatei (Acarina) V. *Scheloribates* Berlese and related genera (Oribatulidae). Kalikasan, 9(2-3): 169-245.

- Denmark M.A., Woodring G.P. 1965. Feeding habits of *Hemileius* new species (Acari: Cryptostigmata, Oribatulidae) on Florida orchids. *The Florida Entomologist*, 48(1): 9-16. <https://doi.org/10.2307/3493516>
- Ermilov S.G., Anichkin A.E. 2014. A new species of *Schelorbitates* (*Schelorbitates*) from Vietnam, with notes on taxonomic status of some taxa in Schelorbitatidae (Acari, Oribatida). *International Journal of Acarology*, 40(1): 109-116. <https://doi.org/10.1080/01647954.2014.885564>
- Ermilov S.G., Rybalov L.B. 2018. New faunistic and taxonomic data on oribatid mites (Acari, Oribatida) of Ethiopia. *Systematic and Applied Acarology*, 23(9): 1827-1837. <https://doi.org/10.11158/saa.23.9.9>
- Ermilov S.G., Rybalov L.B. 2019. Oribatid mites from the vicinities of Dharti-Walal National Park, Ethiopia (Acari, Oribatida). *Spixiana*, 42(2): 235-252.
- Ermilov S.G., Starý J. 2017. A new species of *Schelorbitates* (Acari, Oribatida, Schelorbitatidae) from Vietnam, with key to the *striolatus*-group. *Ecologica Montenegrina*, 10: 14-21. <https://doi.org/10.37828/em.2017.10.3>
- Ermilov S.G., Sidorchuk E.A., Rybalov L.B. 2012. Oribatid mites (Acari: Oribatida) of Ethiopia. *Zootaxa*, 3208(1): 27-40. <https://doi.org/10.11646/zootaxa.3208.1.2>
- Ermilov S.G., Rybalov L.B., Franke K. 2011. Ethiopian oribatid mites of the family Schelorbitatidae (Acari: Oribatida). *African Invertebrates*, 52(2): 311-322. <https://doi.org/10.5733/afin.052.0207>
- Koch C.L. 1835. Deutschlands Crustaceen, Myriapoden und Arachniden. Heft 3. F. Pustet, Regensburg.
- Koch C.L. 1841. Deutschlands Crustaceen, Myriapoden und Arachniden. Heft 31. F. Pustet, Regensburg.
- Koch C.L. 1844. Deutschlands Crustaceen, Myriapoden und Arachniden. Heft 38. F. Pustet, Regensburg.
- Mahunka S. 1982. Oribatids from the Eastern Part of the Ethiopian Region (Acari) I. *Acta Zoologica Academiae Scientiarum Hungaricae*, 28(3-4): 293-336.
- Mahunka S., Mahunka-Papp L. 1995. The oribatid species described by Berlese (Acari). Budapest: Hungarian Natural History Museum. 325 p.
- Norton R.A. 1977. A review of F. Grandjean's system of leg chaetotaxy in the Oribatei (Acari) and its application to the family Damaeidae. In: Dindal D.L. (Ed.). *Biology of oribatid mites*. Syracuse: SUNY College of Environmental Science and Forestry. pp. 33-61.
- Norton R.A., Behan-Pelletier V.M. 2009. Oribatida. In: Krantz G.W., Walter D.E. (Eds). *A Manual of Acarology* (TX). Lubbock: Texas University Press. Chapter 15. pp. 430-564.
- Norton R.A., Ermilov S.G. 2014. Catalogue and historical overview of juvenile instars of oribatid mites (Acari: Oribatida). *Zootaxa*, 3833(1): 1-132. <https://doi.org/10.11646/zootaxa.3833.1.1>
- Pérez-Íñigo C. 1982. Resultados de la expedición Peris-Alvarez a la Isla de Annobón. (13). Oribatid mites (3rd part). *Eos, Revista Espanola de Entomologia*, 58: 223-236.
- Pletzen van R. 1963. Studies on South African Oribatei (Acarina). *Acarologia*, 5(4): 690-703.
- Shaldybina E.S. 1975. The family Schelorbitatidae. In: Ghilyarov M.S. (Ed.). *Key to Soil Inhabiting Mites. Sarcoptiformes*. Moscow: Nauka Press. pp. 262-268.
- Subías L.S. 2022. Listado sistemático, sinonímico y biogeográfico de los ácaros oribátidos (Acariformes: Oribatida) del mundo (excepto fósiles). *Monografías Electrónicas S.E.A.*, 12: 1-538.
- Thor S. 1930. Beiträge zur Kenntnis der Invertebratenfauna von Svalbard. *Skrifter om Svalbard og Ishavet, Oslo*, 27: 1-156.
- Travé J., Vachon M. 1975. François Grandjean. 1882-1975 (Notice biographique et bibliographique). *Acarologia*, 17(1): 1-19.
- Weigmann G. 1969. Zur Taxonomie der europäischen Schelorbitatidae mit der Beschreibung von *Topobates holsaticus* n. sp. (Arachnida: Acari: Oribatei). *Senckenbergiana Biologica*, 50: 421-432.
- Weigmann G. 2006. Hornmilben (Oribatida). *Die Tierwelt Deutschlands*. Teil 76. Keltern: Goecke and Evers. 520 p.
- Woodring J.P. 1965. The biology of five new species of oribatids from Louisiana. *Acarologia*, 7(3): 564-576.