



HAL
open science

An appraisal of the drivers of Norwegian spring-spawning herring (*Clupea harengus*) recruitment

Théo Garcia, Benjamin Planque, Per Arneberg, Bjarte Bogstad, Øystein Skagseth, Maik Tiedemann

► To cite this version:

Théo Garcia, Benjamin Planque, Per Arneberg, Bjarte Bogstad, Øystein Skagseth, et al.. An appraisal of the drivers of Norwegian spring-spawning herring (*Clupea harengus*) recruitment. *Fisheries Oceanography*, 2021, 30 (2), pp.159-173. 10.1111/fog.12510 . hal-03954647

HAL Id: hal-03954647

<https://hal.science/hal-03954647>

Submitted on 7 Mar 2023

HAL is a multi-disciplinary open access archive for the deposit and dissemination of scientific research documents, whether they are published or not. The documents may come from teaching and research institutions in France or abroad, or from public or private research centers.

L'archive ouverte pluridisciplinaire **HAL**, est destinée au dépôt et à la diffusion de documents scientifiques de niveau recherche, publiés ou non, émanant des établissements d'enseignement et de recherche français ou étrangers, des laboratoires publics ou privés.

An appraisal of the drivers of Norwegian spring-spawning herring (*Clupea harengus*) recruitment

Théo Garcia¹  | Benjamin Planque¹  | Per Arneberg¹  | Bjarte Bogstad²  | Øystein Skagseth²  | Maik Tiedemann² 

¹Institute of Marine Research, Tromsø, Norway

²Institute of Marine Research, Bergen, Norway

Correspondence

Per Arneberg, Institute of Marine Research, Hjalmar Johannesen 14, 9007 Tromsø, Norway.

Email: per.arneberg@hi.no

Funding information

Research Council of Norway, Grant/Award Number: 299554

Abstract

Norwegian spring-spawning herring (NSSH, *Clupea harengus*) is a key species in the food-web and for fisheries in the north-east Atlantic. NSSH has been the focus of many ecological and fisheries studies over decades and several hypotheses have been put forward to explain variations in its recruitment. We conducted an extensive literature review of the processes that have been hypothesized to control recruitment at age-2 years. From this review, we constructed a conceptual model to represent how these processes are inter-connected. We then evaluated several of these hypothesized processes using quantile regression modelling and the most recent available data series as input. Most of the hypotheses were not supported by our analyses. Only two hypotheses were supported: the top-down control of herring larval stage by Atlantic mackerel (*Scomber scombrus*) and the positive effect of temperature on recruitment. For the latter the interpretation of the results is nevertheless ambiguous when the latest years (1998–2018) of observations are included, as the correlation then changes from positive to negative. Furthermore, when retesting the hypotheses on age-2 years estimates, we observe a benefitting effect of a consistent strong forcing of the Norwegian Coastal Current and a possible positive effect of the NSSH spawning stock on recruitment. How much these hypotheses can be used to make predictions about future recruitment of herring remains to be tested but based on our results, the relatively short time series available and the dispersion of the observations around the regression models, we can anticipate that such predictions would have limited use for the purpose of fisheries assessment and management.

KEYWORDS

early-life stage, environmental conditions, herring, multiple hypothesis testing, Norwegian and Barents Sea, Pelagic fish recruitment, replicability studies

This is an open access article under the terms of the Creative Commons Attribution License, which permits use, distribution and reproduction in any medium, provided the original work is properly cited.

© 2020 The Authors. *Fisheries Oceanography* published by John Wiley & Sons Ltd

1 | INTRODUCTION

Determining the drivers of fish recruitment to predict stock dynamics has been an endeavour of fisheries research for over a century. Some of the fundamental mechanisms of recruitment control, related to early-life stage survival—the critical period—food availability, predation and transport have been described in the early years of fisheries research (Hjort, 1914). There is a long history of refining the early hypotheses which include among others, the match–mismatch hypothesis (Cushing, 1990), the member–vagrant hypothesis (Sinclair & Iles, 1989) and the triad of production, concentration and retention (Bakun, 1996). Although stock–recruitment relationships are widely used in fisheries management, meta-analyses have shown that the link between stock biomass and subsequent abundance of recruits is generally weak (Cury et al., 2014; Szuwalski et al., 2015), in particular for small pelagic fish species. In their comprehensive analysis of fish recruitment in the world's oceans, Cury et al. (2014) showed that only 4% of the variance in small pelagic fish recruitment could be explained by variations in spawning stock biomass alone.

The recruitment of pelagic fish is known to be highly variable and often assumed to be primarily driven by environmental conditions. In their review of pelagic fish ecology, Trenkel et al. (2014) summarized the hypothesized controlling factors for the recruitment of pelagic fishes. These include the effect of temperature, large scale oceanic patterns (such as the North Atlantic subpolar gyre), predation pressure and body condition/prey availability. A similar set of controlling factors were identified in a subsequent analysis of recruitment drivers in the north-east Atlantic by Zimmermann et al. (2019). From these reviews, there appears to be some degree of generality in the controls and mechanisms that connect environmental variations to recruitment, but the specifics are often context dependent and may vary between populations, regions and time periods (see, e.g., Bailey, 2000; Cushing, 1990; Planque & Frédou, 1999; van der Sleen et al., 2018). If one wants to anticipate possible future year-class strength of a fish population, it is therefore of primary importance to resolve the details of the physical and biological processes that affect recruitment for that particular population.

For fisheries purpose, recruitment is usually considered at the population level and on an annual time scale. This process is spatialized over large geographical areas (spawning grounds, corridors of larval drift, nursery areas) and can extend in time from weeks to years, between egg and recruit stages. Consequently, it is nearly impossible to directly test recruitment hypotheses in an experimental setup. Rather, recruitment studies rely on observations collected over multi-annual time periods and wide geographical areas. In an ecosystem, many controlling factors can interact and may be confounded, so one can never be certain that the connections between controlling factors and recruitment are interpreted correctly. The exact list of detailed controlling mechanisms is generally unknown, and observations in the ocean are limited and prone to observational errors. These elements make the recruitment problem a particularly difficult one to address.

Correlation and regression type analyses have long been central to the study of recruitment control (Myers, 1998). These must be considered with caution, since regressions or correlations that appear to be significant can sometimes emerge between time series that are not related, for example when analysing autocorrelated time series, or because of effects of unmeasured confounding variables. The opposite problem, that is, non-significant regressions or correlations between time series that are causally related, may also occur because of low statistical power, non-linear relationships or complex interactions.

Developments in statistical modelling in recent decades have helped in dealing with the issues mentioned above. Non-linear relationships can be addressed using, for example, generalized additive models (Hastie & Tibshirani, 1990). Robust inference in the case of short autocorrelated time series can be performed through revised statistics (Pyper & Peterman, 1998) or data simulation (Planque & Buffaz, 2008). The study of incomplete sets of limiting factors can be approached using quantile regressions (Cade & Noon, 2003) both for linear and non-linear relationships with quantile generalized additive models (QGAM, Fasiolo et al., 2020). Although these methods cannot solve all the limitations of recruitment studies, they offer new, and hopefully more powerful, ways to explore data and test recruitment hypotheses.

Despite the accumulation of environmental and biological time series data, it remains challenging to robustly and exhaustively identify and quantify the processes involved in determining recruitment. The mechanisms that control recruitment are often hypothesized from limited sets of observations, rather than being directly observed. Environment–recruitment relationships remain elusive and can break down after re-examination (Myers, 1998; Solow, 2002) or be replaced by new hypotheses (Bailey, 2000). Results from different statistical analyses may also appear to be inconsistent because they rely on different assumptions about causal mechanisms or functional relationships between environmental controls and recruitment response (Megrey et al., 2005).

In this context, it is critical to retest past hypotheses and investigate mechanisms behind reported correlations and regressions, as new data and statistical approaches become available (Huse, 2016). This is part of a general process to promote robustness of ecological results through reproducibility and transparency (Powers & Hampton, 2019). In the present study, our purpose is to re-examine existing hypotheses about the control of recruitment for Norwegian spring-spawning herring (NSSH, *Clupea harengus*). We first review the main hypotheses that have been formulated about the control of NSSH recruitment. We then restrict this set of hypotheses to those for which time series data are available to perform quantitative re-evaluation. For each hypothesis, we specify the corresponding expected relationships between data series. We test these expectations using QGAMs (Fasiolo et al., 2020) and classify the results as either inconclusive, supporting or refuting the original hypothesis. Finally, we discuss the possible reasons for the lack of support of previously proposed hypotheses and possible approaches for investigating these further, as well as the potential for NSSH recruitment predictions.

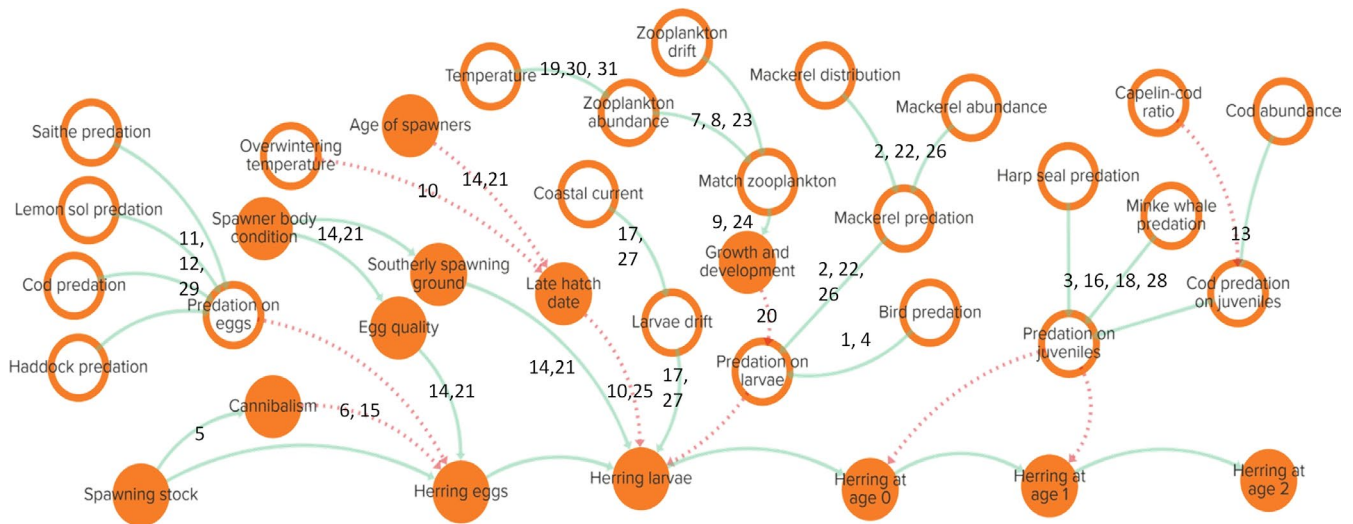


FIGURE 1 Conceptual model of NSSH recruitment. Filled and empty circles represent respectively the relevant intrinsic and extrinsic factors affecting herring recruitment through causal links (arrows). Dashed red arrows mean negative effect and full green arrows a positive effect. Numbers correspond to the references of the review (see Table 1). An online interactive version of the conceptual diagram is available (<https://embed.kumu.io/21a64421484dc364eaccf9e95a5e21ca>) [Colour figure can be viewed at [wileyonlinelibrary.com](https://onlinelibrary.wiley.com)]

2 | MATERIAL & METHODS

2.1 | Case study of the Norwegian spring-spawning herring

The NSSH stock is the most abundant stock of Atlantic herring (*Clupea harengus*), with an estimated spawning stock biomass (SSB) of 3.8 million tonnes in 2018 (ICES, 2018a). *C. harengus* is a key species for the fishing industry of several northern European countries (Bjørndal et al., 2004; Hamre, 1994; Sandberg et al., 1998). The NSSH plays an ecological key role in the Norwegian and Barents Sea both as a predator of planktonic resources and as a forage species for higher trophic levels (Bogstad et al., 2015; Haug et al., 2002; Wassmann et al., 2006). NSSH spawns along the Norwegian coast in February–March. The larvae drift northward along the coast, and juveniles reach the main nursery area in the Barents Sea. During summer, adults are feeding in the Norwegian Sea (Huse, 2016). During the last century, the NSSH stock underwent great variations in abundance and geographical distribution (Huse et al., 2002; ICES, 2018d). The NSSH stock collapse in the 1960s was assigned to overfishing, particularly on immature individuals (Dragesund, 1970). However, the causes for the observed variations in herring abundance are still not fully resolved, and several biotic and abiotic factors are proposed to play an important role in controlling recruitment (Loeng & Drinkwater, 2007; Røttingen, 1990; Toresen & Østvedt, 2000). In this study, we mainly focus on recruitment of NSSH at age-2 years and on the processes that can explain past variations in recruitment and possibly be used for prediction purposes in the future. The number of age-2 years recruits is a key variable in stock assessments supporting advisory processes through, for example, the ICES working groups on Widely Distributed Stocks (WGWDIE, ICES, 2018c) and Integrated Ecosystem Assessment for the Norwegian Sea (WGINOR, ICES, 2018b).

Historically, a number of hypotheses related to processes occurring during the first year of life of herring were tested using abundance estimates derived from stock assessments (Toresen & Østvedt, 2000; Toresen et al., 2019). Because they were derived from cohort analysis (VPA), these estimations of abundance are based on observed abundances at a later age and are estimated by assuming constant mortality at young ages ($M = 0.9$ for age 0–2, $M = 0.15$ for age 3 and older). As a result, these numbers do not directly reflect observations of young fish (0–1–2 years) in the ocean. Rather they express the expected number of young fish that would have led to the observed numbers of older fish, given assumed mortality rates. For the purpose of retesting previously published analyses, we used the age-0 abundance indices from the Barents Sea ecosystem survey in August/September (Eriksen et al., 2009, values for recent years in ICES, 2018b). Survey data for ages 1–2 also exist from surveys in May/June (ICES, 2018d, Table 4.4.7.2) and August/September (Meeren & Prozorkevitch, 2019, Table 7.3.2.2), but they were found to be very noisy and not internally consistent and were therefore not used in this study.

2.2 | Elaboration of the conceptual model and data set conception

The first step of the analysis was to compile and synthesize available information about various hypothesized drivers of NSSH recruitment and formalize these into a common framework. For this purpose, an extensive bibliographic review was conducted (Supplementary Material S1), in which hypotheses about the ecological processes involved in controlling recruitment were compiled. The set of hypotheses was mapped into a conceptual diagram that represents variables, processes, biological responses and the connections between them (Figure 1, Table 1).

TABLE 1 List of the references used in the conceptual model of NSSH recruitment and their corresponding index according to Figure 1

| Index (Figure 1) | References |
|------------------|---------------------------------|
| 1 | Anker-Nilssen & Barrett, (1991) |
| 2 | Astthorsson et al., (2012) |
| 3 | Bogstad et al., (2015) |
| 4 | Barrett et al., (2002) |
| 5 | Fiksen & Slotte, (2002) |
| 6 | Fromentin et al., (2001) |
| 7 | Fossum & Moksness, (1993) |
| 8 | Fossum, (1996) |
| 9 | Fiksen & Folkvord, (1999) |
| 10 | Husebø et al., (2009) |
| 11 | Høines & Bergstad, (1999) |
| 12 | Høines & Bergstad, (2002) |
| 13 | Hamre, (1988) |
| 14 | Heath & Gallego, (1997) |
| 15 | Holst, (1992) |
| 16 | Haug et al., (2002) |
| 17 | Loeng & Drinkwater, (2007) |
| 18 | Lindstrøm et al., (2002) |
| 19 | Megrey et al., (2005) |
| 20 | Ottersen & Loeng, (2000) |
| 21 | Óskarsson et al., (2002) |
| 22 | Olafsdottir et al., (2019) |
| 23 | Prokopchuk & Sentyabov, (2006) |
| 24 | Rice et al., (1993) |
| 25 | Slotte et al., (2019) |
| 26 | Skaret et al., (2015) |
| 27 | Skagseth et al., (2015) |
| 28 | Tjelmeland & Lindstrøm, (2005) |
| 29 | Toresen, (1991) |
| 30 | Toresen & Østvedt, (2000) |
| 31 | Toresen et al., (2019) |

The intention of this study is to retest most of the hypotheses illustrated in Figure 1 using time series of biological and environmental observations. Since multi-annual time series are only available for a subset of the variables presented in the complete conceptual model, a revised and simplified conceptual model was constructed. This model includes components and processes for which there are observational data available to perform the data analyses needed to retest the hypotheses. Observational time series were taken from the literature, when available. Otherwise, they were re-calculated following the methodological information provided by the authors of the original studies.

Finally, the conceptual model selected to perform the numerical analyses was structured around seven major hypotheses:

- (i) Spawning stock does not determine the strength of herring recruitment at age-0, except when SSB reaches extremely low levels (Fiksen & Slotte, 2002).
- (ii) Early hatching positively affects larval survival (Husebø et al., 2009; Slotte et al., 2019). Older and larger adults reach southernmost grounds where they can spawn eggs of higher quality early in the year (Heath & Gallego, 1997; Óskarsson et al., 2002).
- (iii) Mackerel predation reduces larval survival (Skaret et al., 2015).
- (iv) The strength of the Norwegian Coastal Current (NCC) controls the northward larval drift towards Barents Sea nursery areas (Loeng & Drinkwater, 2007; Skagseth et al., 2015). A strong NCC implies that the proportion of larvae reaching the nurseries in the Barents Sea is high. NCC is driven mainly by two mechanisms (Skagseth et al., 2015): the density difference between the coastal and Atlantic water (represented by a salinity anomalies index), and a wind-driven part (represented by an along coast wind index, ACW).
- (v) Cod predation reduces juvenile survival in the nursery area (Hamre, 1988). Johansen (2003) showed that cod predation on herring is dependent on cod size. The highest predation rates on herring juveniles were determined for cod between 25 and 75 cm, which corresponds approximately to 3–8 years old cod. de Barros et al. (1998) demonstrated that cod predation on herring is dependent on the abundance ratio of capelin to cod.
- (vi) Increase in water temperature affects larval survival positively (Toresen & Østvedt, 2000) below a certain threshold and negatively above that threshold (Toresen et al., 2019).
- (vii) Zooplankton has a bottom-up controlling effect on recruitment. In recent years (after 2005), a reduction of the zooplankton biomass has been observed and has been associated with weak NSSH recruitment (Toresen et al., 2019).

The selected variables and data sets are summarized in Table 2. An explanation of the selection or re-calculation of the proxies is provided in Supplementary Material S2. When time series of biotic and abiotic data are linked to processes affecting NSSH at other ages than age-2 years, the time series have been lagged (Table 2). This allowed to study the mechanisms that affect a given cohort. For example, when exploring the relationship between salinity and age-2 years recruits, the recruitment time series is compared to the salinity measurements in the year of birth, that is, 2 years earlier.

2.3 | Data analysis

Two types of relationships between factors and responses were considered: limiting relationships and controlling relationships. The notion of limiting factor was developed by Sprengel and Liebig in agronomy in the early 19th century (van der Ploeg et al., 1999). The law's main principle is that "only one element limits the growth of organisms at any given time." The concept has been commonly applied in ecology (Danger et al., 2008), where a factor is considered as limiting if the response cannot exceed an upper limit and this limit is conditional on the value of the factor. Cade and Noon (2003)

TABLE 2 List of the data series and brief descriptions of their characteristics and origin

| Variable | Code | Measure of... (Orange circles in Figure 1) | Lag | Time range (not lagged) | Source |
|---|------------------|--|------------|--------------------------------|--|
| Herring abundance at age-2 years (XSAM estimation in millions) | H_R2 | Recruitment at age 2 | Not lagged | 1988–2018 | ICES, (2018d) (Table 4.5.1.4) |
| Herring abundance at age-0 (survey estimation in millions) | H_0 | Recruitment at age 0 | -2 | 1980–2017 | ICES, (2018b) (Table 1.2) |
| Spawning stock biomass (XSAM estimation, 1,000 tonnes) | SSB_H | Spawning stock | -2 | 1988–2018 | ICES, (2018d) (Table 4.5.1.4) |
| Consumption of age-0 and age-1 herring by cod (in millions) | Cc_H | Cod predation | -1 | 1984–2018 | Based on ICES, (2018b) (Table 1.3) |
| Cod abundance (3–8 years old, in thousands) | Cod | Cod population size | -1 | 1947–2018 | ICES, (2018b) (Table 3.16) |
| Capelin-cod ratio | Cap_cod_rat | Capelin-cod ratio | -1 | 1973–2018 | ICES, (2018b) (Table 3.16 & 9.5) |
| Mackerel abundance (in thousands) | Mack | Mackerel predation | -2 | 1980–2018 | ICES, (2018d) (Table 8.7.3.2.) |
| Along coast wind stress ($N.m^{-2}$) | ACW_stress | Norwegian Coastal Current (strength) | -2 | 1948–2018 | Calculated with data from NCEP-NCAR database |
| Salinity anomalies | Sal_I2 | Norwegian Coastal Current (strength) | -2 | 1936–2018 | Skagseth et al., (2015) |
| Mean hatching date (in days) | mean_hatch | Hatch timing | -2 | 1987–2016 | Calculated with data from larvae surveys (data provision and curation IMR Kjell Bakkepllass) |
| Average spawners age | Age_index1 | Population structure | -2 | 1988–2018 | ICES, (2018c) (Table 4.4.4.2., 4.4.5.1, 4.5.1.2) |
| % of recruit spawners | Age_index2 | Population structure | -2 | 1989–2018 | ICES, (2018c) (Table 4.4.5.1, 4.5.1.2) |
| Dry weight of zooplankton along Norwegian coast in (g/m^2) | plank | Zooplankton biomass | -2 | 1995–2013 (except 2003 & 2007) | Toresen et al., (2019) |
| Juvenile mortality rate due to cod | Zcod | - | Not lagged | 1990–2018 | Calculations (S2-c) |
| Juvenile mortality rate | Ztot | - | Not lagged | 1990–2018 | Calculations (S2-b) |
| Kola section water temperature in winter [0–200 m], smoothed over 5 years | Smooth_temp_kola | Water temperature | -1 | 1935–2015 | Calculated with PINRO data as Toresen et al., (2000) |

justified the utilization of quantiles near the maximum response to model limiting factors with quantile regression.

In contrast to limiting factors, a controlling factor can drive the response (i.e., causing it to increase or decrease) rather than limit the maximum response. The response to a controlling factor is often modelled by estimating the mean response conditional to the level of the controlling factor. When using quantile regressions, at quantile $\tau = 0.5$, the median response is modelled. This provides results that are similar to those obtained with conventional regression (that estimate the mean rather than the median) but the method is non-parametric and more robust to outliers (Marrie et al., 2009). It is therefore

possible to model the effects of controlling and limiting factors within the single framework of quantile regressions. Quantile GAMs (Fasiolo et al., 2020) offer a powerful statistical modelling technique in cases when the relationships are not expected to be linear.

2.3.1 | Evaluation of earlier hypotheses

Based on the simplified conceptual model, quantile GAMs (Fasiolo et al., 2020) were used to model each controlling and limiting effect. Regressions were performed using a fixed low degree of

freedom ($df_{\max} = 3$) to avoid shapes too complex to be meaningfully interpreted as ecological relationships. Controlling effects ($\tau = 0.5$) were tested for all processes, and limiting effects ($\tau = 0.9$) were assessed for predation, temperature and density-dependent processes. This explicitly reflects assumptions from earlier work (S1) that the latter factors may act as limiting factors on recruitment.

The hypotheses structuring the simplified conceptual model can be translated into 13 relationships between pairs of variables. The number of years used for each relationship depends on the lengths of available time series.

For all the 13 relationships, controlling effects were assessed (i.e., by performing quantile regressions with $\tau = 0.5$). Six relationships were additionally considered in the framework of limiting factors (i.e., modelled with quantile $\tau = 0.9$).

To investigate the effects of SSB on abundance of age-0, a Ricker type model was fitted using the linearized form of the model:

$$\ln\left(\frac{N_0}{SSB}\right) = \ln(\alpha) - \beta \times SSB \quad (1)$$

where N_0 is the number of recruits at age-0; SSB the spawning stock biomass; $\ln(\alpha)$ and $-\beta$ are the intercept and slope of the regression, respectively. These parameters were subsequently back-transformed to fit the conventional Ricker model:

$$N_0 = \alpha \times SSB e^{-\beta \times SSB} \quad (2)$$

Using the linearized form of the Ricker equation, instead of using the standard non-linear form, was motivated by the poor performance of the non-linear quantile model fitting (i.e., poor convergence and unstable results). One side effect of the linear transformation is that the independent and dependent variables are correlated, since they both contain the term "SSB." As a result, the model inference must be considered with caution, in particular when the parameter estimates appear to be statistically significant.

Based on the results of the numerical analyses, the hypotheses were categorized in four groups:

1. Hypotheses were considered as "supported" when the quantile regression analysis displayed a significant response to a factor in the same direction as given in the literature.
2. Hypotheses were considered as "refuted" when the quantile regression analysis displayed significant response but in the direction opposite from that reported in the literature.
3. Hypotheses were considered as "inconclusive" when the analyses resulted in non-significant relationships between the factor and the response.
4. For complex cases (i.e., with multiple hypotheses for only one mechanism), hypotheses were considered as "partly supported" when at least one regression was in line with the prior hypotheses while others were not.

2.3.2 | Relationship between age-0 and age-2 years

To be able to compare our results with earlier studies that have used VPA estimates of age-0 abundance, hypotheses from these studies were reassessed using abundance estimates at age-2 years from the most recent assessment (i.e., XSAM, see Supplementary Material, Aanes, 2016a, 2016b, Aanes, 2016c), serving as a proxy for the age-0 VPA abundance estimate for 2 years previously. For this purpose, 11 additional regressions were performed, summing the total number of regressions to 30.

When time series are positively autocorrelated, the number of independent observations is less than expected from the number of actual observations. This tends to bias the inference towards higher rejection rates of the null hypothesis. In cases where the null hypothesis is rejected, it is therefore relevant to consider autocorrelation as a possible source of bias. On the other hand, in cases where the null hypothesis is not rejected, one can ignore the autocorrelation bias, since correcting for autocorrelation would not change the result of the inference test.

The statistical analyses were computed using the R software (R Development Core Team, 2020). The R scripts and the data set are available in the following repository: https://github.com/theogarcia/SEM_Herring

3 | RESULTS

3.1 | Evaluation of earlier hypotheses

Of the 30 quantile regressions modelled in this study, 11 yielded significant results (rejecting the null hypothesis at $p < .05$), indicating controlling or limiting effects. One regression model was close to significance ($p = .050$, Table 3).

The Ricker stock-recruitment models (i.e., quantile regressions of the linearized Ricker models, Figure 2a) were not significant, and results were classified as inconclusive. Analyses of larval drift (i.e., through ACW index and salinity anomalies) showed non-significant relationships and thus led to inconclusive results (Figure 2b and c). The hypothesis that eggs hatch earlier with higher mean age of spawners was supported by the regression analysis (Figure 2d), but no significant controlling effect of percentage of first-time spawners on hatching date was seen (Figure 2e). No evidence of the controlling effect of the timing of hatching on the number of age-0 herring was observed (Figure 2f). Water temperature had no apparent limiting effect on age-0 herring, but a controlling effect was partly supported (the warmer, the more recruits, Figure 2g). Mackerel abundance, on the other hand, appeared to act as limiting factor to the abundance of 0-group herring, but no controlling effect was observed (Figure 2h). No evidence of the bottom-up control of zooplankton biomass on NSSH abundance at age-0 was observed (Figure 2i). The related hypothesis was therefore classified as inconclusive.

The hypothesis that cod predation negatively affects herring recruitment was refuted, as the regression model displays a significant positive

TABLE 3 Summary of the quantile regressions

| Model name | Formula | Years | Quantile | Degree of freedom of the smoothed explanatory variable | p-value (in bold < .05) | Autocorrelation in residuals (lag in years) |
|------------|--|-----------|----------|--|-------------------------|---|
| M1 | $\ln(H_0/SSB) \sim \ln \alpha - \beta \times SSB$ | 1988–2017 | 0.5 | 1 | .652 | No |
| M1' | $\ln(H_{R2}/SSB) \sim \ln \alpha - \beta \times SSB$ | 1988–2018 | 0.5 | 1 | .026 | Yes (3) |
| M2 | $\ln(H_0/SSB) \sim \ln \alpha - \beta \times SSB$ | 1988–2017 | 0.9 | 1 | .777 | No |
| M2' | $\ln(H_{R2}/SSB) \sim \ln \alpha - \beta \times SSB$ | 1988–2018 | 0.9 | 1 | <.001 | Yes (3) |
| M3 | $H_0 \sim ACW_stress$ | 1980–2017 | 0.5 | 1.124 | .390 | No |
| M3' | $H_{R2} \sim ACW_stress$ | 1988–2018 | 0.5 | 1.001 | .110 | No |
| M4 | $H_0 \sim Sal_I2$ | 1980–2017 | 0.5 | 1.038 | .737 | No |
| M4' | $H_{R2} \sim Sal_I2$ | 1988–2018 | 0.5 | 1.916 | <.001 | No |
| M5 | $mean_hatch \sim Age_index1$ | 1988–2016 | 0.5 | 1.65 | .006 | Yes (1) |
| M6 | $mean_hatch \sim Age_index2$ | 1989–2016 | 0.5 | 1.337 | .219 | Yes (1) |
| M7 | $H_0 \sim mean_hatch$ | 1987–2016 | 0.5 | 1.368 | .784 | No |
| M7' | $H_{R2} \sim mean_hatch$ | 1988–2016 | 0.5 | 1.004 | .379 | Yes (10) |
| M8 | $H_0 \sim smooth_temp_kola$ | 1980–2015 | 0.5 | 1.456 | .002 | No |
| M8' | $H_{R2} \sim smooth_temp_kola$ | 1988–2015 | 0.5 | 1.904 | .006 | Yes (10) |
| M9 | $H_0 \sim smooth_temp_kola$ | 1980–2015 | 0.9 | 1.3 | .710 | No |
| M9' | $H_{R2} \sim smooth_temp_kola$ | 1988–2015 | 0.9 | 1.98 | <.001 | No |
| M10 | $H_0 \sim Mack$ | 1980–2017 | 0.5 | 1.594 | .427 | No |
| M10' | $H_{R2} \sim Mack$ | 1988–2018 | 0.5 | 1 | .217 | Yes (10) |
| M11 | $H_0 \sim Mack$ | 1980–2017 | 0.9 | 1.439 | .004 | No |
| M11' | $H_{R2} \sim Mack$ | 1988–2018 | 0.9 | 1.33 | .023 | Yes (1) |
| M12 | $H_0 \sim plank$ | 1995–2013 | 0.5 | 1.311 | .78 | No |
| M12' | $H_{R2} \sim plank$ | 1995–2013 | 0.5 | 1.687 | .389 | No |
| M13 | $H_0 \sim plank$ | 1995–2013 | 0.9 | 1 | .777 | No |
| M13' | $H_{R2} \sim plank$ | 1995–2013 | 0.9 | 1.002 | .868 | No |
| M14 | $H_{R2} \sim Cc_H$ | 1984–2017 | 0.5 | 1 | .011 | No |
| M15 | $H_{R2} \sim Cc_H$ | 1984–2017 | 0.9 | 1.784 | <.001 | No |
| M16 | $Cc_H \sim Cap_cod_rat$ | 1984–2018 | 0.5 | 1.362 | .171 | Yes (8) |
| M17 | $Cc_H \sim Cod$ | 1984–2018 | 0.5 | 1 | .757 | No |
| M18 | $H_{R2} \sim H_0$ | 1988–2017 | 0.5 | 1.039 | .050 | No |
| M19 | $H_{R2} \sim H_0$ | 1988–2017 | 0.9 | 1 | .862 | No |

Note: For every model, the formula and the time period covered are indicated. The controlling effects were modelled using quantile 0.5, whereas limiting effects modelled using quantile 0.9. The statistics of the models are summarized and the results of the examination of the autocorrelation are given with indication of the autocorrelation time-lag. In the case of the Ricker models (i.e., M1, M1', M2 and M2'), the p-value refers to the β parameter. For all others relationship, the p-value refers to the smoother of the explanatory variable.

relationship between cod predation and the abundance of age-2 years herring (both controlling and limiting, Figure 2j). Additionally, we compared the mortality rate of herring between age-0 and age-2 years due to cod predation to the total herring mortality rate for this age range. It appeared that mortality due to cod predation only represents a small fraction of the mortality experienced by herring between age-0 and age-2 years (see Figure S2.1 in S2). The hypotheses of the modulation of the predation by cod were inconclusive both for the capelin:cod ratio and for the 3–8 years cod abundance (Figure 2k and l). No clear evidence of a controlling or limiting relationship between the number of 0-group and recruitment at age-2 years was observed (Figure 2m), although the controlling relationship was close to significance ($p = .050$) (M18, Table 3).

The results from the regression analyses described above and shown in Figure 2 are summarized in Table 3.

3.2 | Recruitment (abundance) at age-2 years versus abundance at age-0

Figure 2m shows that the estimates derived from survey (age-0) and stock assessment (age-2 years) are only weakly related. Some results of the relationships modelled in Figure 2 (i.e., mechanisms related to age-0 estimates) differed when the age-2 years estimate was used as response variable instead of age-0 estimates (Figure 3). The linearized

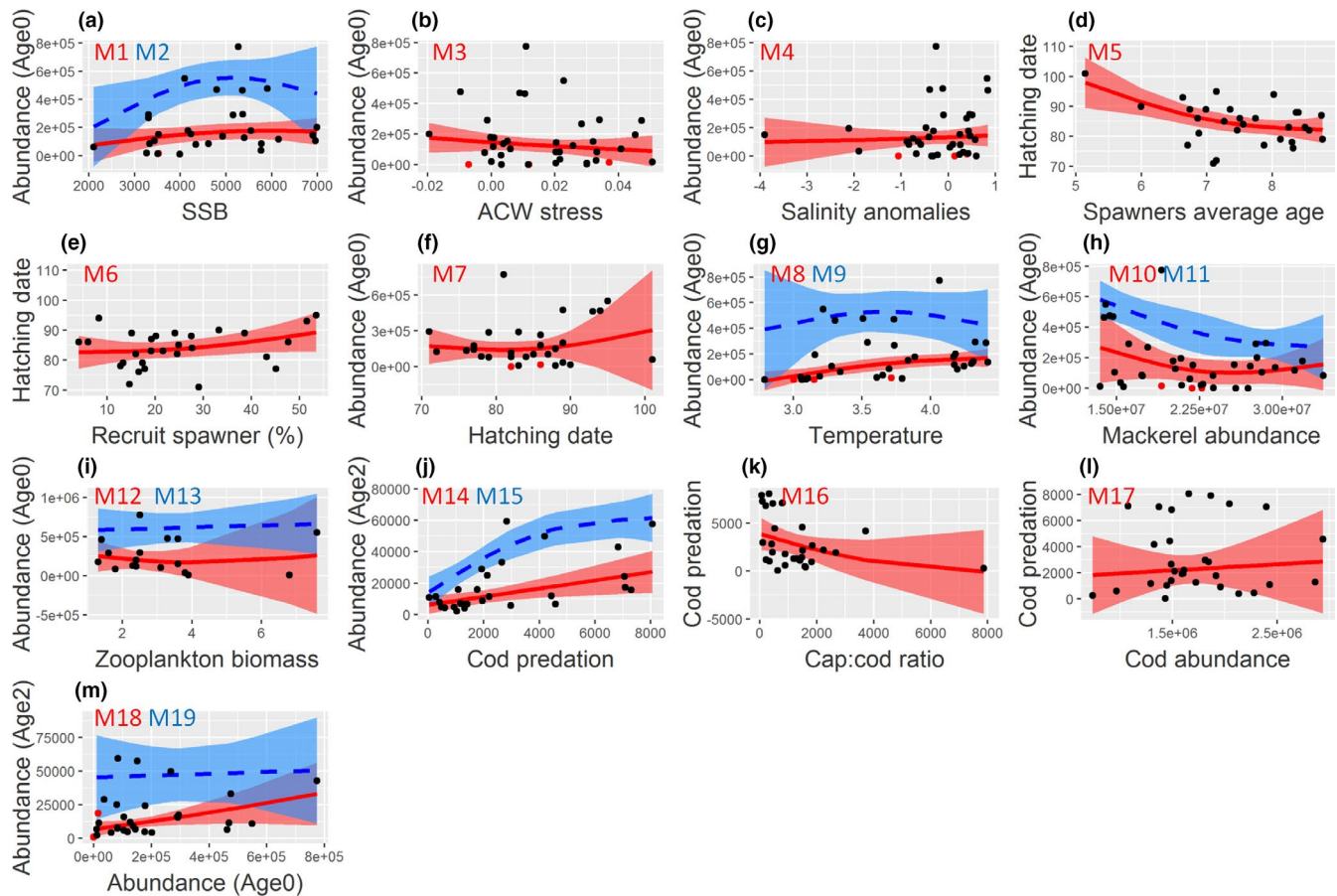


FIGURE 2 Bivariate plots of the quantile regressions performed: at quantiles $\tau = 0.5$ (red line) for controlling relationships and $\tau = 0.9$ (dashed blue line) for limiting relationships. Confidence intervals (CI at 95%) are represented by coloured shadows. Black dots are observations used when fitting the model, and red dots are observations excluded from the model fitting (number of 0-group fish larger than the subsequent number of age-2 years fish in the same cohort, see S2). Model numbers in red (controlling) and blue (limiting) [Colour figure can be viewed at [wileyonlinelibrary.com](https://onlinelibrary.wiley.com/doi/10.1111/1365-2419.12510)]

Ricker model appeared significant for both the limiting and controlling stock–recruitment relationship (Figure 3a), although estimates of the Ricker model parameters were highly uncertain. Given that the linearization of the Ricker function tends to bias the inference towards higher rejection rates (more significant relationships), it is reasonable to assume that unbiased estimates of the model parameters could have yielded non-significant results. The relationship between ACW stress and the abundance of herring at age-2 years appears positive (Figure 3b) while it was negative when recruits at age-0 were considered (Figure 2b), although the two models are not significant. The relationship between abundance at age-2 years and salinity anomalies (Figure 3c) appears significant, although this is primarily driven by two observations with extreme low salinity anomalies. The effects of the date of hatching (Figure 3d), mackerel abundance (Figure 3f) and zooplankton biomass (Figure 3g) remained comparable to those found in the analyses of the 0-age group (Figure 2f, h and i). Both controlling and limiting effects of age-2 years abundance by temperature are dome-shaped (Figure 3e) suggesting a limiting effect on the number of age-2 years for the lowest and highest temperatures.

The results of the hypotheses testing in this subsection are summarized in Figure 4. The hypothesis that early hatching benefits

recruitment remains inconclusive, because no significant relationships were observed. The results support the hypotheses about negative effects of mackerel abundance and positive effects of water temperature on the abundance of age-2 years herring. The positive effect of SSB on the number of age-2 years recruits is classified as partly supported. Although a statistically significant relationship was found, large confidence intervals prevent any conclusion of the SSB effect on recruitment. Of the two hypotheses related to larval drift, only the hydrographic component was significant (i.e., represented by salinity index, M4'). The atmospheric component remained insignificant (i.e., represented by ACW index, M3'). Thus, the results partly supported the hypotheses related to larval drift.

4 | DISCUSSION

We have synthesized a large amount of existing literature about NSSH recruitment dynamics. Many of the reported hypotheses are based on classic fish recruitment theories (Bakun, 1996; Cushing, 1990; Hjort, 1914; Sinclair & Iles, 1989). The graphical representation of the conceptual models (Figure 1) enabled a simplified visualization of how

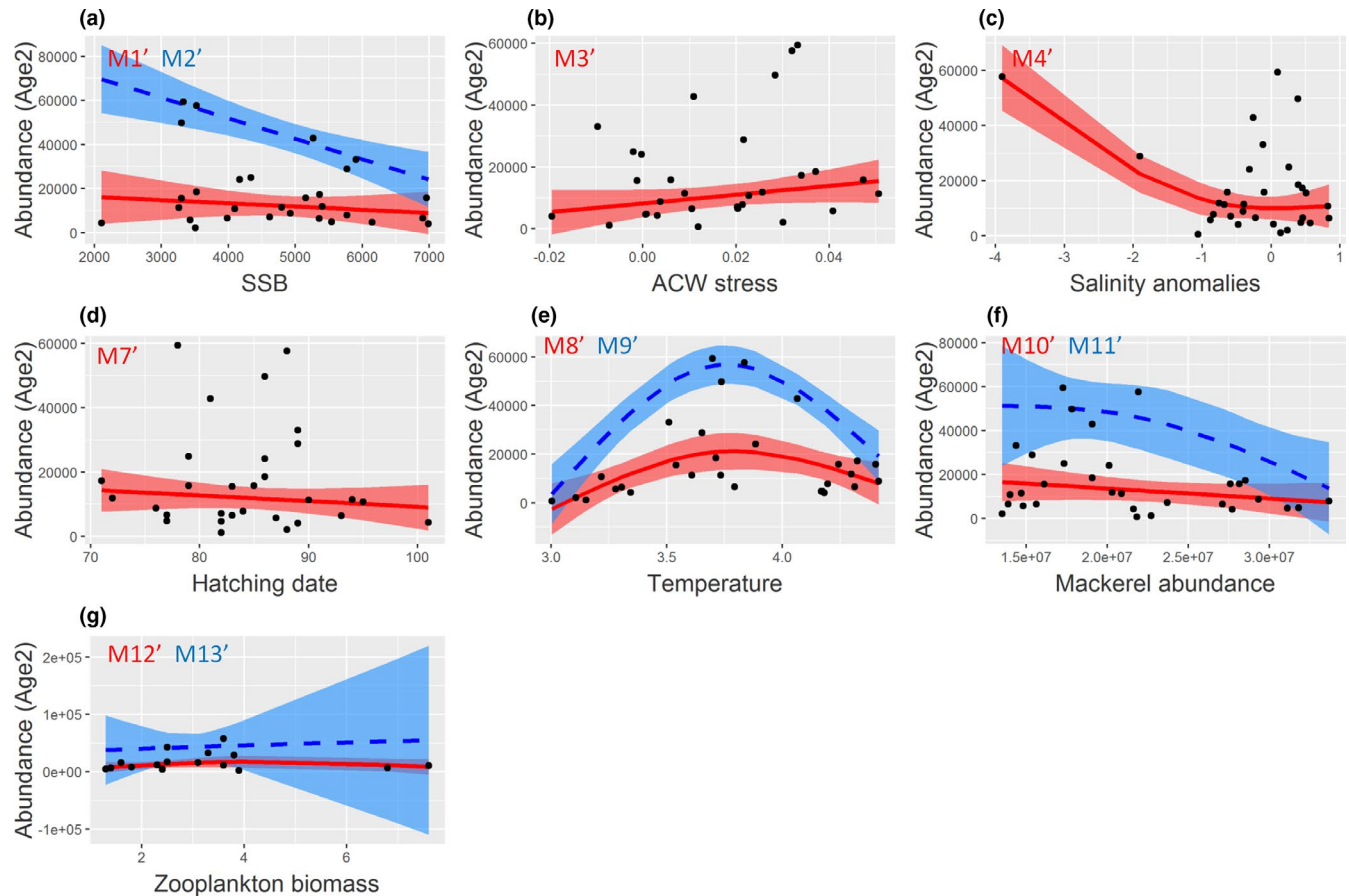


FIGURE 3 Bivariate plots of the quantile regressions for the re-analysis of selected hypotheses using age-2 years estimates (XSAM) as a proxy for age-0 abundance two years previously: at quantiles $\tau = 0.5$ (red line) for controlling relationships and $\tau = 0.9$ (dashed blue line) for limiting relationships. Confidence intervals (CI at 95%) are represented by coloured shadow. Model numbers in red (controlling) and blue (limiting) [Colour figure can be viewed at [wileyonlinelibrary.com](https://onlinelibrary.wiley.com/doi/10.1111/og.12510)]

diverse processes can contribute to variations in herring early-life stage abundances and how these processes are connected. Based on this, the different steps in the processes can be addressed in the analyses and the most appropriate time series identified. This approach is in a way comparable and complementary to using Paulik diagrams (Brooks et al., 2019) to resolve mechanisms operating at different life stages when establishing stock–recruitment relationships. NSSH has been a model species for some of the prominent earlier hypotheses on fish recruitment (e.g., Cushing, 1990; Hjort, 1914). Nonetheless, in a number of earlier studies, hypotheses about recruitment control have been inferred from empirical observations without a clear understanding of the underlying mechanism (e.g., warm years are associated with higher recruitment at age-2 years). Despite our effort to construct a comprehensive compilation of factors affecting NSSH recruitment, some processes inevitably remain unaddressed. For example, it has been shown in the North Sea that herring larvae may be affected by parasites (Heath & Nicoll, 1991). In the case of NSSH, possible effects of parasitism have not yet been addressed. This illustrates the need to update the conceptual syntheses presented as the results of new studies become available.

The numerical analyses support the hypothesis of a limiting effect of Atlantic mackerel predation on the number of herring larvae,

consistent with the study of Skaret et al. (2015). The geographical expansion of mackerel in the Norwegian Sea during the last decades (Astthorsson et al., 2012; Berge et al., 2015; Olafsdottir et al., 2019; Utne et al., 2012) is hypothesized to have increased a spatial and temporal overlap between mackerel distribution and the drift routes of NSSH larvae (Skaret et al., 2015). Our results also confirm the weak relationship between SSB and age-0 herring abundance (see Figure 2a). In Fiksen and Slotte (2002), the stock–recruitment (at age-0) model prevents making strong predictions of recruitment based on SSB, due to great uncertainties in the Ricker model coefficients. In the data set used in the present work, the stock–recruitment relationship is poorly informed for low values of SSB, which further limits our ability to robustly estimate the Ricker model parameters. We also found relationships between temperature and the number of juveniles, but while some regressions (Figure 2g) tend to support the earlier work of Toresen and Østvedt (2000) indicating a positive link between temperature and age-0 abundance, other regressions (Figure 3e) are more in line with the recent study of Toresen et al. (2019) assuming a dome-shaped relationship with a negative effect of temperature on recruitment in recent warm years. This latter result is similar to the dome-shaped relationship established for cod recruitment and temperature in the north Atlantic

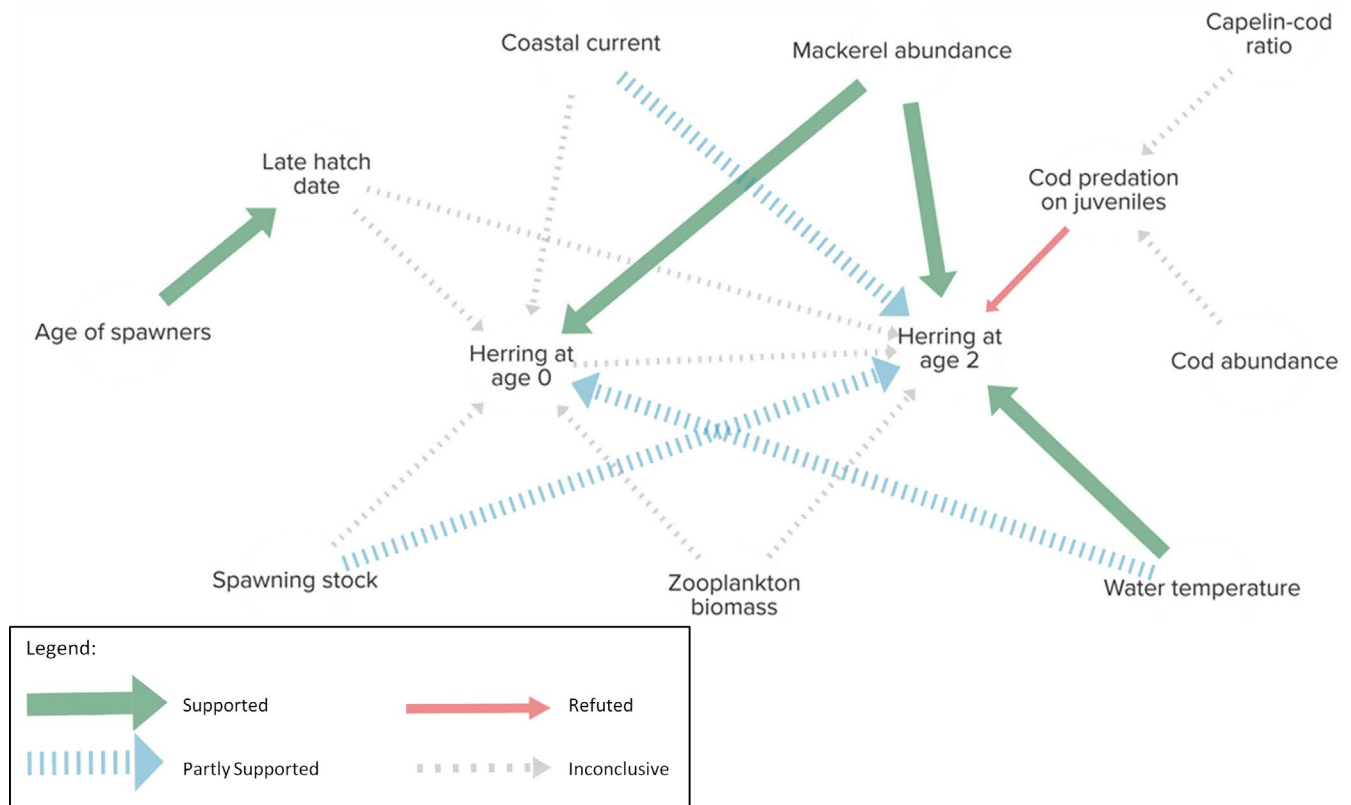


FIGURE 4 Graphical summary of the quantile regression results. Arrows between every component represent the hypothesized mechanism. The colour of the arrows shows the result of the hypothesis testing with quantile regressions (“supported hypotheses” in solid thick green lines, “partly supported hypotheses” in dashed thick blue lines, “inconclusive hypotheses” in dashed thin grey lines and “refuted hypotheses” in solid thin red lines) [Colour figure can be viewed at wileyonlinelibrary.com]

(Drinkwater, 2005; Planque & Frédou, 1999). Unprecedented high temperatures since 2002, exceeding previous periods of warm phases in the North Atlantic, suggest that the Norwegian Sea approached temperature conditions outside optimal regimes for herring recruitment. Since 2004, strong changes in environmental regimes have been observed during the early transitions from yolk sac to preflexion NSSH larval stages and were also associated with weak recruitment (Tiedemann et al., 2020). Although the limiting effect of temperature on recruitment is clear at age-2 years (Figure 3e), it is not significant when age-0 abundance is considered (Figure 2g). Toresen and Østvedt (2000) highlighted that the Kola section, where the temperature data were taken from, can often be influenced by Arctic waters which does not adequately reflect the temperature of the water masses that NSSH larvae are experiencing while drifting. This questions the Kola section temperature time series data as a reasonable proxy to examine the ecological link between number of larvae and water temperature. The use of the time series of vertically resolved measurements along the Norwegian coast may constitute a better proxy especially for larval regimes (Skagseth et al., 2015; Slotte & Fiksen, 2000). In this context, evaluating and updating this index further is required. Temperature may affect many ecological processes simultaneously, such as zooplankton phenology and production (Prokopchuk & Sentyabov, 2006), or larval growth (Ottersen & Loeng, 2000). Thus, temperature alone influences

mechanistic relationships that are difficult to assess when only assessing one factor to explain a complex process like recruitment.

Our result revealed an unexpected positive relationship between herring recruitment and cod predation. The hypothesis that cod predation should have a negative impact on the number of age-2 years recruits was refuted; both by the quantile regression analysis and by the contrast between NSSH mortality rate through cod predation and the overall mortality rate of juvenile herring. A positive link between cod predation and the number of recruits would suggest that a third unmeasured variable may be responsible for the perceived positive relationship. Either high predation rates that could limit NSSH recruitment were not adequately measured during the short time series investigated or the observed predation rates are representative, and they never exceed a sufficient threshold to limit herring abundance at age-2 years. Also, the mortality on herring from age 0 to 2 years is partly due to predation by minke whales (Tjelmeland & Lindstrøm, 2005). Trophic cascades in cod dominated ecosystems have been observed (Frank et al., 2005; Hjermann et al., 2007, 2010), and nevertheless, our results do not highlight major top-down control on herring juveniles by cod predation.

For most of the hypotheses retested, results were statistically non-significant leading to inconclusive results. Some of the original hypotheses were based on only a few years of observation (e.g., investigating 5 years of size-dependent cod predation,

Johansen, 2003; or nine years of the variability of cod predation by the capelin–cod ratio, de Barros et al., 1998). In these cases, the original results indicated significant relationships for the period investigated but are likely not robust enough to be considered for longer periods. The statistical analyses of short ecological time series are prone to artefactual results (Siple et al., 2020) and, as environmental–recruitment relationships may change over time, it is an asset to periodically re-evaluate these relationships with updated and longer time series. The bottom-up effect of zooplankton was retested with a time series of 17 years. The analyses led to inconclusive results for limiting and controlling effects both on age-0 and age-2 years NSSH abundance. It seems that quantile GAM failed at fitting the relationship due to two extreme zooplankton biomass values (for years 1997 and 2001). The analyses of the effect of the NCC on recruitment at age-0 were inconclusive whereas the same effects on recruitment at age-2 years led to partly supported results. Such observation can be explained by the inconsistency between age-0 and age-2 years estimates or by the difficulty to describe complex mechanisms such as larval drift. As highlighted by different authors (Cury & Roy, 1989; Skagseth et al., 2015), the advection hypothesis captures complex mechanisms. Wind conditions and bathymetry drive the strength and the direction of the NCC and thus the larval drift. However, such mechanisms might modify also abiotic (e.g., water turbulence, turbidity, salinity) and biotic conditions (e.g., primary production, predation pressure, availability of prey, Fiksen & Slotte, 2002). Thus, as in the case of temperature, it remains difficult to interpret the effects of larval transport on recruitment without considering a collection of interacting mechanisms.

In some of the earlier studies, estimates of 0-group abundances were taken from stock assessment results (VPA and XSAM, Fiksen & Slotte, 2002; Husebø et al., 2009; Skagseth et al., 2015; Toresen & Østvedt, 2000). When using cohort models such as VPA and XSAM, the abundance of young year classes is partly derived from abundances of the same cohort observed in later years while assuming that the mortality of early stages is known. As a result, this implies that estimated 0-group abundance is proportional to the abundance of older fish observed in later years (as illustrated in Figure S2.1). Using such procedure, the age-0 estimate is also prone to errors due to uncertainties in age determination of the older fish (Bogstad et al., 2016). In this study, we have used direct observations of abundance at age-0 from surveys (Dingsør, 2005; Eriksen et al., 2009) and found that there was no direct relationship between survey abundance estimates at age-0 (i.e., Barents Sea survey) and modelled abundance estimates at age-2 years (i.e., XSAM) 2 years later. Hypotheses about ecological control of the 0-group abundance were retested using the age-2 years abundance estimates in order to investigate the possible consequence of the discrepancy between age-2 years and age-0 estimates. In the cases of testing NCC, SSB and temperature the results of the two analyses were not in line. At this point, it remains unclear whether the differences in the results obtained using the age-0 or age-2 years time series arise from high uncertainties in the age-0 abundances estimates or from processes occurring during the first 1.5 year of life which affect NSSH survival

but are not explicitly considered when using age-2 years time series (e.g., minke whale predation, Tjelmeland & Lindstrøm, 2005). This observation questions the reliability of the age-0 abundance estimates. Although the indices might be considered to be reliable for strong year classes (Eriksen et al., 2009), they might be biased for weak year classes (Aanes, 2016a) or for low catchability (i.e., mostly due to small and young fish not fully recruited or by low sampling effort, Aanes, 2016c).

Our re-analysis of earlier hypotheses about the control of herring recruitment was conducted in the spirit of “replicability studies” which aim at evaluating the robustness of prior results (Powers & Hampton, 2019). We could not follow a strict replication protocol, as can be done in biomedical sciences, given that the study is not conducted in an experimental setup. Rather, we compiled data series that best correspond to the processes investigated in earlier studies and used these data series to retest earlier hypotheses. The hypotheses were tested in a simple way using a series of regressions between one dependent and one independent variable. Some of the resulting models had a few extreme values on the x-axis (e.g., M4, M4', M5, M7, M16) or were constrained by a low number of statistical units for some ranges of the explanatory response (e.g., low values of SSB were not available in M1, M2, M1' and M2'). Such data set compositions may lead to problems with interpretation of results from statistical analyses (e.g., difficulties with making inferences for ranges without data on the x-axis) or to biased results (e.g., when significant relationships are mainly driven by outliers, Rousseeuw & Leroy, 2005). Additionally, regression residuals were autocorrelated for nine of the 30 models performed (M1', M2', M5, M6, M7', M8', M10', M11'; see Table 3). Procedures for correcting for autocorrelation have so far not been implemented for quantile GAMs and could not be done directly here. Alternative approaches that include transformation of the time series before model fitting using, for example, prewhitening or first-differencing (Pyper & Peterman, 1998) were not used since they modify the hypothesis that is tested (e.g., testing for effect of year-to-year change in temperature on year-to-year change in recruitment is not equivalent to testing for the effect of temperature on recruitment). Temporal autocorrelation in residuals is known to bias the significance of the tested relationships in the direction of increasing the rejection rate (Bence, 1995). The issue of temporal autocorrelation is therefore only of concern for the models that appear to be statistically significant (M1' and M2': SSB-Recruitment, M5: age-hatching date, M8': temperature–recruitment and M11': mackerel–recruitment). The statistical significance of these models must therefore be taken with caution.

In summary, of the 30 regressions performed, 11 appeared statistically significant. Of these, two were in contradiction with the original hypothesis (M14 and M15), five are potentially biased due to data transformation (M1', M2') and/or autocorrelation (M5, M8' and M11') and one is mostly driven by two outliers (M4'). Residuals in remaining regressions M8 and M9' are not autocorrelated but the time series of Kola temperature used in these models are strongly autocorrelated by construction (5 years running average) which is

also expected to bias the inference. The remaining regression M11 supports the original hypothesis (Mackerel abundance limiting age-0 recruits) without likely statistical bias. How much these hypotheses can be used to make predictions about future recruitment of herring remains to be tested but based on these results, the relatively short time series available and the dispersion of the observations around the regression models we can anticipate that such predictions will have limited use for the purpose of fisheries assessment and management.

Following Huse (2016), we evaluated a set of scientific hypotheses about NSSH recruitment within a common analytical framework. We assembled a collection of observational time series which was used to retest existing hypotheses about processes influencing NSSH recruitment. Based on these results, we conclude that only few of the original hypotheses find empirical support from multi-decadal observations. We anticipate that the current set of hypotheses and data is not currently sufficient to perform robust predictions of herring recruitment one or several years into the future.

ACKNOWLEDGEMENTS

The authors are grateful to Reidar Toresen for providing zooplankton data. This study was carried out as part of the project "Sustainable multi-species harvest from the Norwegian Sea and adjacent ecosystems," funded by the Research Council of Norway (project number 299554).

CONFLICT OF INTEREST

The authors declare to have not conflict of interest.

AUTHOR CONTRIBUTION

TG, BP and PA conceived the research idea; TG ran data analyses; TG and BP wrote the manuscript; PA, BB, ØS and MT provided some data series and participated in discussions of the results and critically reviewed the manuscript.

DATA AVAILABILITY STATEMENT

The data that support the findings of this study are available on the online repository https://github.com/theogarcia/SEM_Herring.

ORCID

Théo Garcia  <https://orcid.org/0000-0001-5873-7572>
 Benjamin Planque  <https://orcid.org/0000-0002-0557-7410>
 Per Arneberg  <https://orcid.org/0000-0003-4693-3124>
 Bjarte Bogstad  <https://orcid.org/0000-0002-6630-8994>
 Øystein Skagseth  <https://orcid.org/0000-0002-9508-3632>
 Maik Tiedemann  <https://orcid.org/0000-0002-6985-9257>

REFERENCES

- Aanes, S. (2016a). A statistical model for estimating fish stock parameters accounting for errors in data: Applications to data for Norwegian Spring-spawning herring. WD4 in ICES. 2016. Report of the Benchmark Workshop on Pelagic stocks (WKPELA), 29 February–4 March 2016, ICES Headquarters, Copenhagen, Denmark. ICES CM 2016/ACOM:34. 106pp.
- Aanes, S. (2016b). Diagnostics of models fits by XSAM to herring data. WD12 in ICES. 2016. Report of the Benchmark Workshop on Pelagic stocks (WKPELA), 29 February–4 March 2016, ICES Headquarters, Copenhagen, Denmark. ICES CM 2016/ACOM:34. 106pp.
- Aanes, S. (2016c). Forecasting stock parameters of Norwegian spring spawning herring using XSAM. WD at WGWIDE in 2016.
- Anker-Nilssen, T., & Barrett, R. T. (1991). Status of seabirds in northern Norway. *British Birds*, 84(8), 329–341.
- Astthorsson, O. S., Valdimarsson, H., Gudmundsdottir, A., & Óskarsson, G. J. (2012). Climate-related variations in the occurrence and distribution of mackerel (*Scomber scombrus*) in Icelandic waters. *ICES Journal of Marine Science*, 69(7), 1289–1297. <https://doi.org/10.1093/icesjms/fss084>
- Bailey, K. (2000). Shifting control of recruitment of walleye pollock *Theragra chalcogramma* after a major climatic and ecosystem change. *Marine Ecology Progress Series*, 198, 215–224. <https://doi.org/10.3354/meps198215>
- Bakun, A. (1996). *Patterns in the ocean: Ocean processes and marine population dynamics*. California Sea Grant, in cooperation with Centro de Investigaciones Biológicas del Noroeste. Mexico: La Paz.
- Barrett, R. (2002). Food consumption by seabirds in Norwegian waters. *ICES Journal of Marine Science*, 59(1), 43–57. <https://doi.org/10.1006/jmsc.2001.1145>
- Bence, J. R. (1995). Analysis of short time series: Correcting for autocorrelation. *Ecology*, 76(2), 628–639. <https://doi.org/10.2307/1941218>
- Berge, J., Heggland, K., Lønne, O. J., Cottier, F., Hop, H., Gabrielsen, G. W., Nøttestad, L., & Misund, O. A. (2015). First records of Atlantic Mackerel (*Scomber scombrus*) from the Svalbard Archipelago, Norway, with possible explanations for the extension of its distribution. *Arctic*, 68(1), 54. <https://doi.org/10.14430/arctic4455>
- Bjørndal, T., Gordon, D. V., Kaitala, V., & Lindroos, M. (2004). International management strategies for a straddling fish stock: A bio-economic simulation model of the Norwegian Spring-spawning herring fishery. *Environmental & Resource Economics*, 29(4), 435–457. <https://doi.org/10.1007/s10640-004-1045-y>
- Bogstad, B., Gjøsæter, H., Haug, T., & Lindstrøm, U. (2015). A review of the battle for food in the Barents Sea: Cod vs. marine mammals. *Frontiers in Ecology and Evolution*, 3, 29. <https://doi.org/10.3389/fevo.2015.00029>
- Bogstad, B., Yaragina, N. A., & Nash, R. D. M. (2016). The early life-history dynamics of Northeast Arctic cod: Levels of natural mortality and abundance during the first 3 years of life. *Canadian Journal of Fisheries and Aquatic Sciences*, 73(2), 246–256. <https://doi.org/10.1139/cjfas-2015-0093>
- Brooks, E. N., Thorson, J. T., Shertzer, K. W., Nash, R. D. M., Brodziak, J. K. T., Johnson, K. F., Klibansky, N., Wells, B. K., & White, J. (2019). Paulik revisited: Statistical framework and estimation performance of multistage recruitment functions. *Fisheries Research*, 217, 58–70. <https://doi.org/10.1016/j.fishres.2018.06.018>
- Cade, B. S., & Noon, B. R. (2003). A gentle introduction to quantile regression for ecologists. *Frontiers in Ecology and the Environment*, 1(8), 412–420. [https://doi.org/10.1890/1540-9295\(2003\)001\[0412:AGITQR\]2.0.CO;2](https://doi.org/10.1890/1540-9295(2003)001[0412:AGITQR]2.0.CO;2)
- Cury, P., Fromentin, J.-M., Figueat, S., & Bonhommeau, S. (2014). Resolving Hjort's dilemma: How is recruitment related to spawning stock biomass in marine fish? *Oceanography*, 27(4), 42–47. <https://doi.org/10.5670/oceanog.2014.85>
- Cury, P., & Roy, C. (1989). Optimal environmental window and pelagic fish recruitment success in upwelling areas. *Canadian Journal of Fisheries and Aquatic Sciences*, 46(4), 670–680. <https://doi.org/10.1139/f89-086>
- Cushing, D. H. (1990). Plankton production and year-class strength in fish populations: An update of the match/mismatch hypothesis. *Advances in Marine Biology*, 26, 249–293. [https://doi.org/10.1016/S0065-2881\(08\)60202-3](https://doi.org/10.1016/S0065-2881(08)60202-3)

- Danger, M., Daufresne, T., Lucas, F., Pissard, S., & Lacroix, G. (2008). Does Liebig's law of the minimum scale up from species to communities? *Oikos*, 117(11), 1741–1751. <https://doi.org/10.1111/j.1600-0706.2008.16793.x>
- de Barros, P., Tirasin, E. M., & Toresen, R. (1998). Relevance of cod (*Gadus morhua* L.) predation for inter-cohort variability in mortality of juvenile Norwegian spring-spawning herring. *ICES Journal of Marine Science*, 55(3), 454–466.
- Dingsør, G. E. (2005). Estimating abundance indices from the international 0-group fish survey in the Barents Sea. *Fisheries Research*, 72(2–3), 205–218. <https://doi.org/10.1016/j.fishres.2004.11.001>
- Dragesund, O. (1970). Factors influencing year-class strength of Norwegian spring spawning herring (*Clupea harengus* Linne). *FiskDir. Skr. Ser. Havunders.*, 15, 381–450.
- Drinkwater, K. F. (2005). The response of Atlantic cod (*Gadus morhua*) to future climate change. *ICES Journal of Marine Science*, 62(7), 1327–1337. <https://doi.org/10.1016/j.icesjms.2005.05.015>
- Eriksen, E., Prozorkevich, D., & Dingsør, G. E. (2009). An evaluation of 0-group abundance indices of barents sea fish stocks. *The Open Fish Science Journal*, 2(1), 6–14. <https://doi.org/10.2174/1874401X00902010006>
- Fasiolo, M., Wood, S. N., Zaffran, M., Nedellec, R., & Goude, Y. (2020). Fast calibrated additive quantile regression. *Journal of the American Statistical Association*, 1–11. <https://doi.org/10.1080/01621459.2020.1725521>
- Fiksen, Ø., & Folkvord, A. (1999). Modelling growth and ingestion processes in herring *Clupea harengus* larvae. *Marine Ecology Progress Series*, 184, 273–289. <https://doi.org/10.3354/meps184273>
- Fiksen, Ø., & Slotte, A. (2002). Stock-environment recruitment models for Norwegian spring spawning herring (*Clupea harengus*). *Canadian Journal of Fisheries and Aquatic Sciences*, 59(2), 211–217. <https://doi.org/10.1139/f02-002>
- Fossum, P. (1996). A study of first-feeding herring (*Clupea harengus* L.) larvae during the period 1985–1993. *ICES Journal of Marine Science*, 53(1), 51–59. <https://doi.org/10.1006/jmsc.1996.0005>
- Fossum, P., & Moksness, E. (1993). A study of spring-and autumn-spawned herring (*Clupea harengus* L.) larvae in the Norwegian Coastal Current during spring 1990. *Fisheries Oceanography*, 2(2), 73–81. <https://doi.org/10.1111/j.1365-2419.1993.tb00122.x>
- Frank, K. T., Petrie, B., Choi, J. S., & Leggett, W. C. (2005). Trophic cascades in a formerly cod-dominated ecosystem. *Science*, 308(5728), 1621–1623.
- Fromentin, J.-M., Myers, R. A., Bjørnstad, O. N., Stenseth, N. C., Gjøsæter, J., & Christie, H. (2001). Effects of density-dependent and stochastic processes on the regulation of cod populations. *Ecology*, 82(2), 567–579. [https://doi.org/10.1890/0012-9658\(2001\)082\[0567:EODDA S\]2.0.CO;2](https://doi.org/10.1890/0012-9658(2001)082[0567:EODDA S]2.0.CO;2)
- Hamre, J. (1988). *Some aspects of the interrelation between the herring in the Norwegian Sea and the stocks of capelin and cod in the Barents Sea*. ICES. C.M.1988/ H:42, 15 pp.
- Hamre, J. (1994). Biodiversity and exploitation of the main fish stocks in the Norwegian–Barents Sea ecosystem. *Biodiversity and Conservation*, 3(6), 473–492. <https://doi.org/10.1007/BF00115154>
- Hastie, T., & Tibshirani, R. (1990). *Generalized Additive Models*. 10: : Chapman and Hall.
- Haug, T., Lindstrøm, U., & Nilssen, K. T. (2002). Variations in Minke Whale (*Balaenoptera acutorostrata*) diet and body condition in response to ecosystem changes in the Barents Sea. *Sarsia*, 87(6), 409–422. <https://doi.org/10.1080/0036482021000155715>
- Heath, M., & Gallego, A. (1997). From the biology of the individual to the dynamics of the population: Bridging the gap in fish early life studies. *Journal of Fish Biology*, 51(sa), 1–29. <https://doi.org/10.1111/j.1095-8649.1997.tb06090.x>
- Heath, M., & Nicoll, N. (1991). Infection of larval herring by helminth parasites in the North Sea and the effect on feeding incidence. *Continental Shelf Research*, 11(12), 1477–1489. [https://doi.org/10.1016/0278-4343\(91\)90022-X](https://doi.org/10.1016/0278-4343(91)90022-X)
- Hjermann, D. Ø., Bogstad, B., Dingsør, G. E., Gjøsæter, H., Ottersen, G., Eikeset, A. M., & Stenseth, N. C. (2010). Trophic interactions affecting a key ecosystem component: A multi-stage analysis of the recruitment of the Barents Sea capelin. *Canadian Journal of Fisheries and Aquatic Science*, 67, 1363–1375.
- Hjermann, D. Ø., Bogstad, B., Eikeset, A. M., Ottersen, G., Gjøsæter, H., & Stenseth, N. C. (2007). Food web dynamics affect Northeast Arctic cod recruitment. *Proceedings of the Royal Society, Series B*, 274, 661–669. <https://doi.org/10.1098/rspb.2006.0069>
- Hjort, J. (1914). *Fluctuations in the great fisheries of Northern Europe viewed in the light of biological research*. Rapports et Procès-Verbaux des Réunions du Conseil Permanent International Pour L'Exploration de la Mer, 1914, vol. 20 (pg. 1–228).
- Høines, Å. S., & Bergstad, O. A. (1999). Resource sharing among cod, haddock, saithe and pollack on a herring spawning ground. *Journal of Fish Biology*, 55(6), 1233–1257. <https://doi.org/10.1111/j.1095-8649.1999.tb02073.x>
- Høines, Å. S., & Bergstad, O. A. (2002). Food partitioning by flatfishes on a herring spawning ground. *Sarsia*, 87(1), 19–34. <https://doi.org/10.1080/003648202753631703>
- Holst, J. C. (1992). *Cannibalism as a factor regulating year class strength in the Norwegian spring-spawning herring stock*. ICES. C.M. 1992/H:14, 15 pp.
- Huse, G. (2016). A spatial approach to understanding herring population dynamics. *Canadian Journal of Fisheries and Aquatic Sciences*, 73(2), 177–188. <https://doi.org/10.1139/cjfas-2015-0095>
- Huse, G., Railsback, S., & Fernö, A. (2002). Modelling changes in migration pattern of herring: Collective behaviour and numerical domination. *Journal of Fish Biology*, 60(3), 571–582. <https://doi.org/10.1111/j.1095-8649.2002.tb01685.x>
- Husebø, Å., Stenevik, E. K., Slotte, A., Fossum, P., Salthaug, A., Vikebø, F., Aanes, S., & Folkvord, A. (2009). Effects of hatching time on year-class strength in Norwegian spring-spawning herring (*Clupea harengus*). *ICES Journal of Marine Science*, 66(8), 1710–1717. <https://doi.org/10.1093/icesjms/fsp150>
- ICES. (2018a). *Herring (Clupea harengus) in subareas 1, 2, and 5, and in divisions 4.a and 14.a, Norwegian spring-spawning herring (the Northeast Atlantic and the Arctic Ocean)*. <https://doi.org/10.17895/ICES.PUB.4568>
- ICES. (2018b). *Report of the Arctic Fisheries Working Group (AFWG)*. 18–24 April 2018, Ispra, Italy. ICES CM 2018/ACOM:06. 859 pp.
- ICES. (2018c). *Report of the Working Group on Integrated Ecosystem Assessments for the Norwegian Sea (WGINOR)*. ICES WGINOR REPORT 2018 26–30 November 2018. Reykjavik, Iceland. ICES CM 2018/IEASG:20. 123 pp.
- ICES. (2018d). *Report of the Working Group on Widely Distributed Stocks (WGWIDE)*. 28 August– 3 September 2018, Torshavn, Faroe Islands. ICES CM 2018/ACOM: 23. 488 pp.
- Johansen, G. O. (2003). Size-dependent predation on juvenile herring (*Clupea harengus* L.) by Northeast Arctic cod (*Gadus morhua* L.) in the Barents Sea. *Sarsia*, 88(2), 136–153. <https://doi.org/10.1080/0036482031000148>
- Lindstrøm, U., Haug, T., & Røttingen, I. (2002). Predation on herring, *Clupea harengus*, by minke whales, *Balaenoptera acutorostrata*, in the Barents Sea. *ICES Journal of Marine Science*, 59(1), 58–70. <https://doi.org/10.1006/jmsc.2001.1135>
- Loeng, H., & Drinkwater, K. (2007). An overview of the ecosystems of the Barents and Norwegian Seas and their response to climate variability. *Deep Sea Research Part II: Topical Studies in Oceanography*, 54(23–26), 2478–2500. <https://doi.org/10.1016/j.dsr2.2007.08.013>
- Marrie, R. A., Dawson, N. V., & Garland, A. (2009). Quantile regression and restricted cubic splines are useful for exploring relationships

- between continuous variables. *Journal of Clinical Epidemiology*, 62(5), 511–517.e1. <https://doi.org/10.1016/j.jclinepi.2008.05.015>
- Megrey, B. A., Lee, Y.-W., & Macklin, S. A. (2005). Comparative analysis of statistical tools to identify recruitment–environment relationships and forecast recruitment strength. *ICES Journal of Marine Science*, 62(7), 1256–1269. <https://doi.org/10.1016/j.icesjms.2005.05.018>
- Myers, R. A. (1998). When do environment–recruitment correlations work? *Reviews in Fish Biology and Fisheries*, 8, 285–305.
- Olafsdottir, A. H., Utne, K. R., Jacobsen, J. A., Jansen, T., Óskarsson, G. J., Nøttestad, L., Elvarsson, B. P., Broms, C., & Slotte, A. (2019). Geographical expansion of Northeast Atlantic mackerel (*Scomber scombrus*) in the Nordic Seas from 2007 to 2016 was primarily driven by stock size and constrained by low temperatures. *Deep Sea Research Part II: Topical Studies in Oceanography*, 159, 152–168. <https://doi.org/10.1016/j.dsr2.2018.05.023>
- Óskarsson, G. J., Kjesbu, O. S., & Slotte, A. (2002). Predictions of realised fecundity and spawning time in Norwegian spring-spawning herring (*Clupea harengus*). *Journal of Sea Research*, 48(1), 59–79. [https://doi.org/10.1016/S1385-1101\(02\)00135-1](https://doi.org/10.1016/S1385-1101(02)00135-1)
- Ottersen, G., & Loeng, H. (2000). Covariability in early growth and year-class strength of Barents Sea cod, haddock, and herring: The environmental link. *ICES Journal of Marine Science*, 57(2), 339–348. <https://doi.org/10.1006/jmsc.1999.0529>
- Planque, B., & Buffaz, L. (2008). Quantile regression models for fish recruitment–environment relationships: Four case studies. *Marine Ecology Progress Series*, 357, 213–223. <https://doi.org/10.3354/meps07274>
- Planque, B., & Frédo, T. (1999). Temperature and the recruitment of Atlantic cod (*Gadus morhua*). *Canadian Journal of Fisheries and Aquatic Sciences*, 56(11), 2069–2077.
- Powers, S. M., & Hampton, S. E. (2019). Open science, reproducibility, and transparency in ecology. *Ecological Applications*, 29(1), e01822. <https://doi.org/10.1002/eap.1822>
- Prokopchuk, I., & Sentyabov, E. (2006). Diets of herring, mackerel, and blue whiting in the Norwegian Sea in relation to *Calanus finmarchicus* distribution and temperature conditions. *ICES Journal of Marine Science*, 63(1), 117–127. <https://doi.org/10.1016/j.icesjms.2005.08.005>
- Pyper, B. J., & Peterman, R. M. (1998). Comparison of methods to account for autocorrelation in correlation analyses of fish data. *Canadian Journal of Fisheries and Aquatic Sciences*, 55(9), 2127–2140. <https://doi.org/10.1139/f98-104>
- R Core Team (2020). *R: A language and environment for statistical computing*. R Foundation for Statistical Computing. <https://www.R-project.org/>
- Rice, J. A., Miller, T. J., Rose, K. A., Crowder, L. B., Marschall, E. A., Trebitz, A. S., & DeAngelis, D. L. (1993). Growth rate variation and larval survival: Inferences from an individual-based size-dependent predation model. *Canadian Journal of Fisheries and Aquatic Sciences*, 50(1), 133–142. <https://doi.org/10.1139/f93-015>
- Røttingen, I. (1990). A review of variability in the distribution and abundance of Norwegian spring spawning herring and Barents Sea capelin. *Polar Research*, 8(1), 33–42. <https://doi.org/10.1111/j.1751-8369.1990.tb00373.x>
- Rousseeuw, P. J., & Leroy, A. M. (2005). *Robust Regression and Outlier Detection* (Vol. 589). Hoboken, NJ: John Wiley & Sons.
- Sandberg, P., Bogstad, B., & Røttingen, I. (1998). Bioeconomic advice on TAC ± the state of the art in the Norwegian Fishery management. *Fisheries Research*, 37, 259–274.
- Sinclair, M., & Iles, T. (1989). Population regulation and speciation in the oceans. *ICES Journal of Marine Science*, 45(2), 165–175. <https://doi.org/10.1093/icesjms/45.2.165>
- Siple, M. C., Essington, T. E., Barnett, L. A. K., & Scheuerell, M. D. (2020). Limited evidence for sardine and anchovy asynchrony: Re-examining an old story. *Proceedings of the Royal Society B: Biological Sciences*, 287(1922), 20192781. <https://doi.org/10.1098/rspb.2019.2781>
- Skagseth, Ø., Slotte, A., Stenevik, E. K., & Nash, R. D. M. (2015). Characteristics of the Norwegian Coastal current during years with high recruitment of Norwegian Spring Spawning Herring (*Clupea harengus* L.). *PLoS One*, 10(12), e0144117. <https://doi.org/10.1371/journal.pone.0144117>
- Skaret, G., Bachiller, E., Langøy, H., & Stenevik, E. K. (2015). Mackerel predation on herring larvae during summer feeding in the Norwegian Sea. *ICES Journal of Marine Science: Journal Du Conseil*, 72(8), 2313–2321. <https://doi.org/10.1093/icesjms/fsv087>
- Slotte, A., & Fiksen, Ø. (2000). State-dependent spawning migration in Norwegian spring-spawning herring. *Journal of Fish Biology*, 56(1), 138–162.
- Slotte, A., Husebø, Å., Berg, F., Stenevik, E., Folkvord, A., Fossum, P., Mosegaard, H., Vikebø, F., & Nash, R. (2019). Earlier hatching and slower growth: A key to survival in the early life history of Norwegian spring spawning herring. *Marine Ecology Progress Series*, 617–618, 25–39. <https://doi.org/10.3354/meps12682>
- Solow, A. R. (2002). Fisheries recruitment and the North Atlantic Oscillation. *Fisheries Research*, 54(2), 295–297. [https://doi.org/10.1016/S0165-7836\(00\)00308-8](https://doi.org/10.1016/S0165-7836(00)00308-8)
- Szuwalski, C. S., Vert-Pre, K. A., Punt, A. E., Branch, T. A., & Hilborn, R. (2015). Examining common assumptions about recruitment: A meta-analysis of recruitment dynamics for worldwide marine fisheries. *Fish and Fisheries*, 16(4), 633–648. <https://doi.org/10.1111/faf.12083>
- Tiedemann, M., Nash, R. D. M., Stenevik, E. K., Stiasny, M. H., Slotte, A., & Kjesbu, O. S. (2020). Environmental influences on Norwegian spring-spawning herring (*Clupea harengus* L.) larvae reveal recent constraints in recruitment success. *ICES Journal of Marine Science*. <https://doi.org/10.1093/icesjms/fsaa072> [Epub ahead of print].
- Tjelmeland, S., & Lindstrøm, U. (2005). An ecosystem element added to the assessment of Norwegian spring-spawning herring: Implementing predation by minke whales. *ICES Journal of Marine Science*, 62(2), 285–294. <https://doi.org/10.1016/j.icesjms.2004.12.011>
- Toresen, R. (1991). Predation on the eggs of Norwegian spring-spawning herring (*Clupea harengus* L.) on a spawning ground on the west coast of Norway. *ICES Journal of Marine Science*, 48(1), 15–21. <https://doi.org/10.1093/icesjms/48.1.15>
- Toresen, R., & Østvedt, O. J. (2000). Variation in abundance of Norwegian spring-spawning herring (*Clupea harengus*, Clupeidae) throughout the 20th century and the influence of climatic fluctuations. *Fish and Fisheries*, 1(3), 231–256. <https://doi.org/10.1046/j.1467-2979.2000.00022.x>
- Toresen, R., Skjoldal, H. R., Vikebø, F., & Martinussen, M. B. (2019). Sudden change in long-term ocean climate fluctuations corresponds with ecosystem alterations and reduced recruitment in Norwegian spring-spawning herring (*Clupea harengus*, Clupeidae). *Fish and Fisheries*, 20(4), 686–696. <https://doi.org/10.1111/faf.12369>
- Trenkel, V. M., Huse, G., MacKenzie, B. R., Alvarez, P., Arrizabalaga, H., Castonguay, M., Goñi, N., Grégoire, F., Hátún, H., Jansen, T., Jacobsen, J. A., Lehodey, P., Lutcavage, M., Mariani, P., Melvin, G. D., Neilson, J. D., Nøttestad, L., Óskarsson, G. J., Payne, M. R., ... Speirs, D. C. (2014). Comparative ecology of widely distributed pelagic fish species in the North Atlantic: Implications for modelling climate and fisheries impacts. *Progress in Oceanography*, 129, 219–243. <https://doi.org/10.1016/j.pocean.2014.04.030>
- Utne, K. R., Huse, G., Ottersen, G., Holst, J. C., Zabavnikov, V., Jacobsen, J. A., Óskarsson, G. J., & Nøttestad, L. (2012). Horizontal distribution and overlap of planktivorous fish stocks in the Norwegian Sea during summers 1995–2006. *Marine Biology Research*, 8(5–6), 420–441. <https://doi.org/10.1080/17451000.2011.640937>
- van der Meer, G., & Prozorkevitch, D. (eds.) *Survey report from the joint Norwegian/Russian ecosystem survey in the Barents Sea and adjacent waters, August–October 2018*. IMR/PINRO Joint Report Series 2, 2019.

- van der Ploeg, R. R., Böhm, W., & Kirkham, M. B. (1999). On the origin of the theory of mineral nutrition of plants and the law of the minimum. *Soil Science Society of America Journal*, 63(5), 1055–1062. <https://doi.org/10.2136/sssaj1999.6351055x>
- van der Sleen, P., Rykaczewski, R., Turley, B., & Sydeman, W. (2018). Non-stationary responses in anchovy (*Engraulis encrasicolus*) recruitment to coastal upwelling in the Southern Benguela. *Marine Ecology Progress Series*, 596, 155–164. <https://doi.org/10.3354/meps12567>
- Wassmann, P., Reigstad, M., Haug, T., Rudels, B., Carroll, M. L., Hop, H., Gabrielsen, G. W., Falk-Petersen, S., Denisenko, S. G., Arashkevich, E., Slagstad, D., & Pavlova, O. (2006). Food webs and carbon flux in the Barents Sea. *Progress in Oceanography*, 71(2–4), 232–287. <https://doi.org/10.1016/j.pocean.2006.10.003>
- Zimmermann, F., Claireaux, M., & Enberg, K. (2019). Common trends in recruitment dynamics of north-east Atlantic fish stocks and their links to environment, ecology and management. *Fish and Fisheries*, 20(3), 518–536. <https://doi.org/10.1111/faf.12360>

SUPPORTING INFORMATION

Additional supporting information may be found online in the Supporting Information section.

How to cite this article: Garcia T, Planque B, Arneberg P, Bogstad B, Skagseth Ø, Tiedemann M. An appraisal of the drivers of Norwegian spring-spawning herring (*Clupea harengus*) recruitment. *Fish Oceanogr*. 2021;30:159–173. <https://doi.org/10.1111/fog.12510>