



HAL
open science

Interfacial adsorption and lipolysis behavior of gPLRP2 onto natural lipid membrane extracts from microalgae *Chlorella vulgaris*, walnuts, and almonds

Jeanne Kergomard, Frédéric Carrière, Maeva Subileau, Lauriane Chonchon, Gilles Paboef, Nathalie Barouh, Claire Bourlieu-Lacanal, Véronique Vié

► To cite this version:

Jeanne Kergomard, Frédéric Carrière, Maeva Subileau, Lauriane Chonchon, Gilles Paboef, et al.. Interfacial adsorption and lipolysis behavior of gPLRP2 onto natural lipid membrane extracts from microalgae *Chlorella vulgaris*, walnuts, and almonds. Journées Chevreul 2023, Jan 2023, Paris, France. hal-03953913

HAL Id: hal-03953913

<https://hal.science/hal-03953913v1>

Submitted on 24 Jan 2023

HAL is a multi-disciplinary open access archive for the deposit and dissemination of scientific research documents, whether they are published or not. The documents may come from teaching and research institutions in France or abroad, or from public or private research centers.

L'archive ouverte pluridisciplinaire **HAL**, est destinée au dépôt et à la diffusion de documents scientifiques de niveau recherche, publiés ou non, émanant des établissements d'enseignement et de recherche français ou étrangers, des laboratoires publics ou privés.



Distributed under a Creative Commons Attribution - NonCommercial - NoDerivatives 4.0 International License



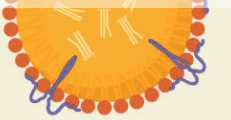
Jeanne Kergomard^{1,2}, Frédéric Carrière³, Maeva Subileau², Lauriane Chonchon¹, Gilles Paboeuf¹, Nathalie Barouh^{4,5}, Claire Bourlieu^{2*} & Véronique Vié^{1*}

¹Univ Rennes, CNRS, IPR - UMR 6251, ScanMAT - UAR 2025, F-35000 Rennes, France; ²INRAE/UM/Institut Agro Montpellier UMR 1208 IATE, France; ³Aix-Marseille Université, CNRS, UMR7281 Bioénergétique et Ingénierie des Protéines, Marseille, France; ⁴CIRAD, UMR QUALISUD, F34398 Montpellier-France; ⁵Qualisud, Univ Montpellier, Avignon Université, CIRAD, Institut Agro, Université de La Réunion, Montpellier, France.

Context

Oilseed OB membranes vs Photosynthetic plant membranes

Rich in phospholipids
Rich in $\omega 6$ and $\omega 3$ PUFA
(C18:2 and C18:3)

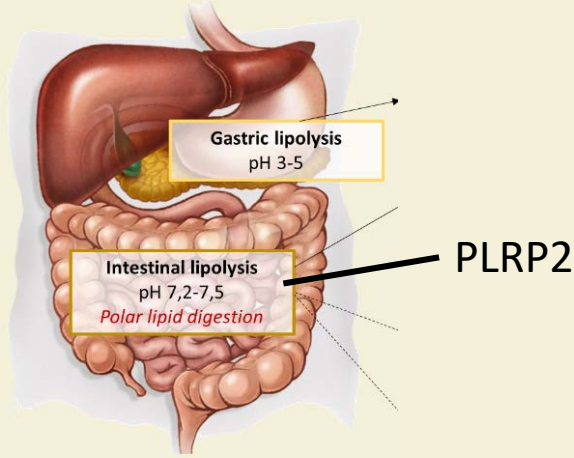


Oil bodies (OB)

Rich in galactolipids
Rich in $\omega 3$ PUFA
(C16:3 and C18:3)



Chloroplast



Objectives

This study is focused on the adsorption and lipolytic activity of the pancreatic lipase related type 2 protein (PLRP2) on natural lipid extracts. Two sources, OB (walnuts and almonds) or chloroplasts (microalgae), were selected. Complementary biophysical tools (tensiometry, ellipsometry, Atomic Force Microscopy-AFM) were used to characterize firstly the membrane model organisation and secondly, to quantify the adsorption and activity of PLRP2.

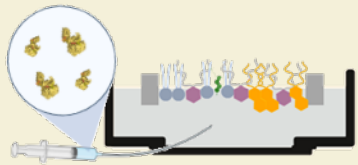
Material and methods

Systems studied

- Walnut OB
- Chlorella vulgaris*

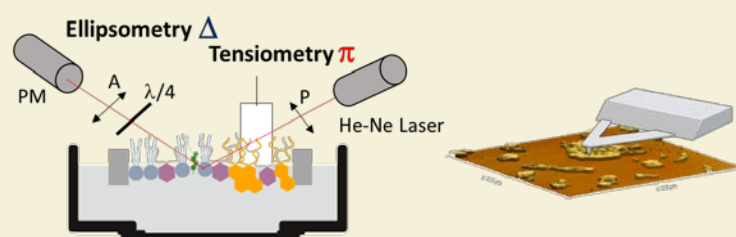
Polar lipid extraction

Membrane model



Polar lipid monolayer

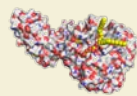
Characterization



π (surface pressure, mN/m)
→ Lateral molecular interactions at the air/water interface

Δ (ellipsometric angle, °)
→ Molecular film thickness (measured on 1 μ m below the film)

Enzymes



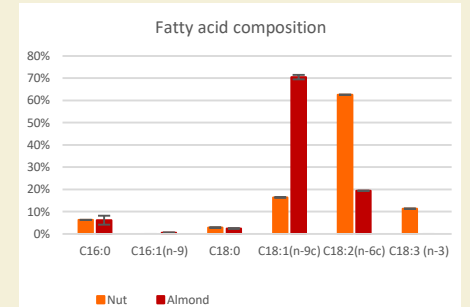
Guinea pig PLRP2 (gPLRP2)

Results

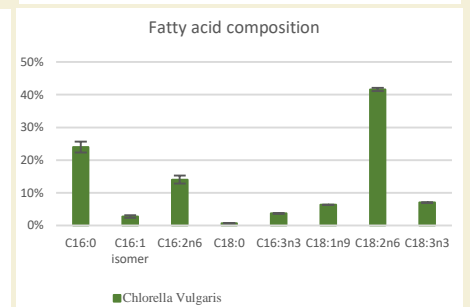
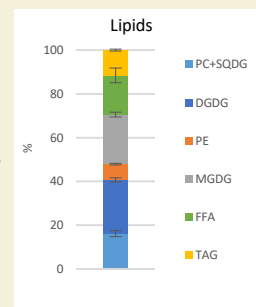
Chemical lipid characterization



Phospholipids only
Saturated FA ~10%
Walnut : $\omega 6 \gg \omega 3$
Almond : $\omega 9 \gg \omega 6$



Chlorella vulgaris



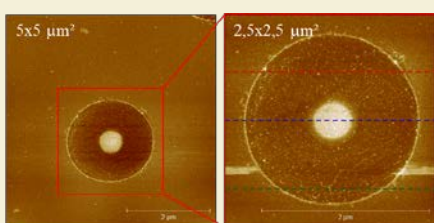
Galactolipids > Phospholipids

Saturated FA ~22%
 $\omega 6 \gg \omega 3$ (~walnut)

Results

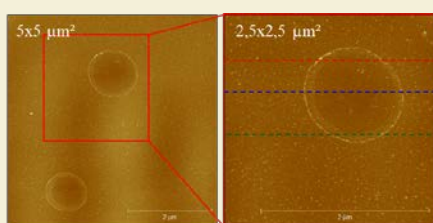
Characterization of membrane model

Walnut OB



$\pi=20.1 \pm 0.5$ mN/m, $\Delta=8.1 \pm 1^\circ$

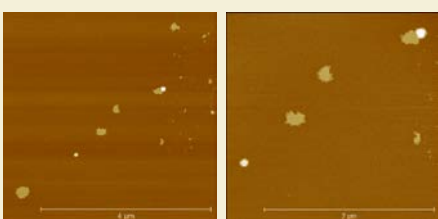
Almond OB



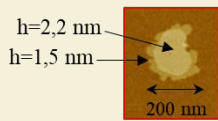
$\pi=20.1 \pm 0.5$ mN/m, $\Delta=9.1 \pm 0.5^\circ$

Phase separation on fluid phase due to the complexity of AG mixtures

C. vulgaris



$\pi=19.7 \pm 0.5$ mN/m, $\Delta=8.1 \pm 0.5^\circ$

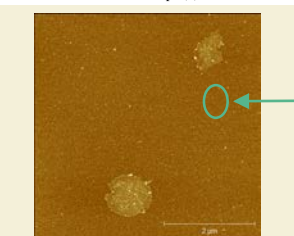
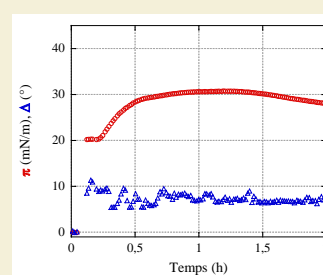


Small liquid condensed domains with 2 different heights

Results

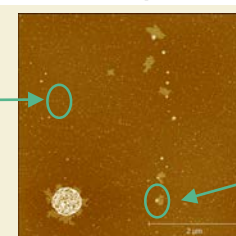
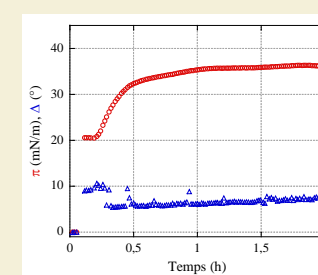
Kinetics adsorption and lyplolitic activity of gPLRP2 (0.128 mg/L)

Walnut OB + gPLRP2



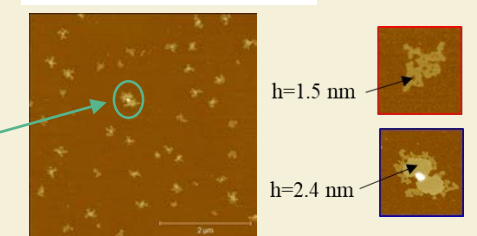
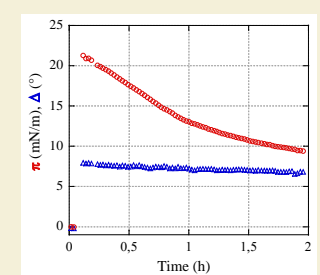
$\pi=28.0$ mN/m, $\Delta=8.1^\circ$

Almond OB + gPLRP2



$\pi=36.2$ mN/m, $\Delta=8.0^\circ$

C. vulgaris + gPLRP2



$\pi=9.4$ mN/m, $\Delta=6.9^\circ$

Adsorption of gPLRP2
Insertion in fluid phase and condensed phase
Film reorganization
Digestion products on almond extract film?

Adsorption of gPLRP2
Insertion in condensed phase
Domains of digestion products

Conclusion

The organisation of lipid extracts was observed by AFM and showed phase separation related to the FA composition. The interaction with the gPLRP2 was followed by ellipsometry and tensiometry, both signals allow to discriminate between adsorption, adsorption and insertion, adsorption and digestion. The lipolytic activity on galactolipids is clearly observed for the *chlorella vulgaris* extract.

*Corresponding authors: veronique.vie@univ-rennes.fr ; claire.bourlieu-lacanal@inrae.fr