



HAL
open science

Socio-ecological dynamics in urban systems: An integrative approach to mosquito-borne disease in Bengaluru, India

Michelle V Evans, Siddharth Bhatnagar, John M Drake, Courtney C Murdock, Shomen Mukherjee

► **To cite this version:**

Michelle V Evans, Siddharth Bhatnagar, John M Drake, Courtney C Murdock, Shomen Mukherjee. Socio-ecological dynamics in urban systems: An integrative approach to mosquito-borne disease in Bengaluru, India. *People and Nature*, 2022, 4 (3), pp.730-743. 10.1002/pan3.10311 . hal-03953883

HAL Id: hal-03953883

<https://hal.science/hal-03953883>






Submitted on 24 Jan 2023

HAL is a multi-disciplinary open access archive for the deposit and dissemination of scientific research documents, whether they are published or not. The documents may come from teaching and research institutions in France or abroad, or from public or private research centers.

L'archive ouverte pluridisciplinaire **HAL**, est destinée au dépôt et à la diffusion de documents scientifiques de niveau recherche, publiés ou non, émanant des établissements d'enseignement et de recherche français ou étrangers, des laboratoires publics ou privés.

RESEARCH ARTICLE

Socio-ecological dynamics in urban systems: An integrative approach to mosquito-borne disease in Bengaluru, India

Michelle V. Evans^{1,2,3}  | Siddharth Bhatnagar^{4,5}  | John M. Drake^{2,3}  |
Courtney C. Murdock^{2,3,6,7,8}  | Shomen Mukherjee^{5,9} 

¹MIVEGEC, Univ. Montpellier, CNRS, IRD, Montpellier, France; ²Odum School of Ecology, University of Georgia, Athens, GA, USA; ³Center for Ecology of Infectious Diseases, University of Georgia, Athens, GA, USA; ⁴Observatoire de Genève, Université de Genève, Sauverny, Switzerland; ⁵School of Arts and Sciences, Azim Premji University, Bengaluru, India; ⁶Department of Entomology, College of Agriculture and Life Sciences, Cornell University, Ithaca, NY, USA; ⁷Cornell Institute of Host-Microbe Interactions and Disease, Cornell University, Ithaca, NY, USA; ⁸Northeast Regional Center of Excellence in Vector-borne Diseases, Cornell University, Ithaca, NY, USA and ⁹Biology and Life Sciences Division, School of Arts and Sciences, Ahmedabad University, Ahmedabad, Gujarat, India

Correspondence

Michelle V. Evans
Email: mv.evans.phd@gmail.com

Funding information

National Science Foundation, Grant/
Award Number: Graduate Research
Fellowship

Handling Editor: Leah Gibbs

Abstract

1. Urban environments are heterogeneous landscapes of social and environmental features, with important consequences for human–nature entanglements, such as that of mosquito-borne disease.
2. Investigations into this intra-urban heterogeneity in mosquito dynamics find conflicting results, likely due to the complex socio-ecological interactions and the importance of place-based context. Integrative research, which synthesizes multiple disciplines and epistemologies, can place ecological results into their social context to explore these place-based differences and reveal novel solutions for mosquito-borne disease management.
3. Here, we develop an integrative approach to understanding spatial patterns of mosquito burdens in urban systems by combining entomological surveys, semi-structured interviews and sketch maps. We highlight this approach using a mixed-method study conducted in Bengaluru, India, a rapidly urbanizing city with a high burden of mosquito-borne disease.
4. Although we found no evidence for a difference in mosquito abundance across an urban gradient, there were differences in individuals' everyday experiences with mosquitoes. These differences were mediated by how individuals moved through outdoor space and their vulnerability to hazards in these spaces.
5. This example of integrative research illustrates what can be gained from the inclusion of multiple epistemologies, particularly for research in urban systems.

KEYWORDS

mixed methods, mosquito-borne disease, urbanization

This is an open access article under the terms of the Creative Commons Attribution License, which permits use, distribution and reproduction in any medium, provided the original work is properly cited.

© 2022 The Authors. *People and Nature* published by John Wiley & Sons Ltd on behalf of British Ecological Society.

1 | INTRODUCTION

Urban environments are heterogeneous landscapes of social and environmental features, with important consequences for human-nature interactions. Mosquito-borne disease transmission, for example, occurs at the intersection of specific conditions of the abiotic and biotic environment, mosquito vector and human host. Human populations in urban areas are at particular risk for certain mosquito-borne diseases, particularly viruses transmitted by mosquitoes in the *Aedes* genus, such as dengue, chikungunya and yellow fever (Franklinos et al., 2019; Gubler, 2011). This is due to high human population densities (Rose et al., 2020; Weaver & Reisen, 2010), the adaptation of mosquito species to urban and domestic habitats (Brown et al., 2014), the abundance of larval habitat in anthropogenic landscapes (LaDeau et al., 2015) and urban microclimates conducive to mosquito and virus development (Murdock et al., 2017; Wimberly et al., 2020). In fact, city dwellers make up a substantial portion of the over 3.5 billion people at risk of vector-borne diseases globally (World Health Organization, 2014). Within a city, however, mosquito-borne disease risk is uneven, a result of the underlying heterogeneity of the socio-ecological landscape (Alberti, 2005; Romeo-Aznar et al., 2018).

Recently, there has been an effort to understand these spatial patterns of mosquito-borne diseases in a city, and the causes of these patterns, so that limited vector control resources can be allocated efficiently (Stone et al., 2019). The findings of these studies vary widely. Mosquito populations may be most abundant in either lower socio-economic neighbourhoods (LaDeau et al., 2013; Mulligan et al., 2015) or higher socio-economic neighbourhoods (Becker et al., 2014; Mulligan et al., 2015). More frequent provision of piped water can increase (Lippi et al., 2018; Stewart-Ibarra et al., 2013) or decrease (Hayden et al., 2010; Schmidt et al., 2011) mosquito populations. The effect of climate is often nonlinear and dependent on regional climate trends (Evans et al., 2019; Misslin et al., 2016; Murdock et al., 2017; Wimberly et al., 2020). Clearly, many of these relationships depend on the specifics of the locale in question. Furthermore, environmental factors (e.g. hydrology, microclimate, host distributions) are the result of and interact with the socio-political context of the city (Parham et al., 2015; Santos-Vega et al., 2016). For example, a study of water infrastructure and mosquito-borne disease in Ahmedabad, India found more malaria cases in areas with a low density of formal water infrastructure connections because informal water connections, which may not be well-maintained, led to high leakage and creation of habitat for mosquito vectors (Subramanian et al., 2014). Leaking connections also decreased water pressure for the whole network, influencing water storage patterns, and malaria, elsewhere in the city (Subramanian et al., 2014). Understanding mosquito-borne disease in cities may therefore benefit from a place-based, integrative approach that situates ecological findings in the social context needed to properly address the complexity of a socio-ecological system (Kinzig, 2001; Mayer, 2006).

1.1 | Formulating an integrative approach to mosquito-borne disease

The study of mosquito-borne diseases is particularly plagued by a lack of interdisciplinary and integrative research, limiting the types of research questions that are typically asked and therefore the potential policy solutions considered. A review found that only 3% of the research on dengue and chikungunya, two *Aedes*-borne viruses, involves a social science approach (Reidpath et al., 2011) and the field rarely engages with critical social theory and prioritizes quantifiable metrics over qualitative analyses (Allotey et al., 2010; King, 2010). In addition, critical social theory studies of mosquito-borne disease rarely include ecological or environmental pathways or data in their analysis of socio-political systems. Integrative research, 'a process by which ideas, data and information, methods, tools, concepts, and/or theories are synthesized, connected, or blended' (Repko, 2012), is one methodology that combines the strengths of each of these approaches in a complementary way, without prioritizing one epistemological perspective over another (Adams, 2007; MacMynowski, 2007). Given the current state of the field of mosquito-borne disease, with its stark disciplinary boundaries, we propose that integrative research is one potential way to discover the novel research avenues needed to address mosquito-borne disease.

We base our conception of integrative research primarily in the principles put forth by Hirsch and Brosius (2013), but which are shared with other formulations of integrative research (e.g. Miller et al., 2008; O'Rourke et al., 2019). This framework embraces epistemological pluralism (e.g. multiple ways of knowing and evaluating the validity of knowledge claims) through the incorporation of quantitative and qualitative data and methodologies, as well as social and biophysical approaches to knowledge production. Viewed through a biophysical or ecological perspective, the relevant patterns are those in mosquito community diversity and abundance as they shift across an urban gradient. However, mosquito-borne disease transmission occurs at the intersection of mosquito vectors and human hosts, and so we must also examine patterns in individuals' experiences with mosquitoes, questioning where, how and why they may encounter high mosquito burdens. The construction and management of nature in cities, and therefore potential mosquito habitat, is a direct consequence of existing socio-political processes and hierarchies of power, which often reproduce social inequalities in the resulting patterns in environmental amenities across a city (Gandy, 2014; Lawhon et al., 2014). By focusing on power inequalities in an integrative analysis of mosquito-borne disease, we aim to identify not just the patterns in mosquito populations, but also the socio-political context that shapes these patterns.

Integrative research across biophysical and social boundaries, particularly in urban areas, is also grounded in the work of feminist scholars and geographers, who recognize the power dynamics inherent to the production of knowledge and offer alternatives to conventional scientific methods through hybrid and critical approaches to the natural sciences (Kwan, 2004; Lave, 2015). In practice, this

means that we do not use quantitative data to validate qualitative results and do not view our own knowledge of the system as academic 'experts' over that of the community members. This is especially important given the power inequality between researcher and researched and the colonial history of discounting local knowledge in the field of tropical medicine.

Our study demonstrates how an integrative methodology can build on a purely ecological approach in the context of urbanization and mosquito-borne disease in a peri-urban area in southeast Bengaluru, Karnataka, India. This region has a recent history of rapid development and is the site of the city's outward-facing urbanization into the previously rural periphery (Verma et al., 2017). In addition, Bengaluru has experienced large outbreaks of dengue over the past decade (Balakrishnan et al., 2015), and was a national hotspot for dengue during this study in 2019 (Yasmeen, 2019). We demonstrate how the application of integrative research methods to urban ecological systems can be used to better understand people's everyday experience with mosquitoes within the broader context of urbanization. Specifically, through this study, we address the following questions:

- How does the mosquito community's composition and abundance shift across an urban gradient?
- How do changes in measured mosquito dynamics relate to perceptions of mosquito–human interactions?
- What additional insights can be revealed through an integrative approach that may be missed by a single discipline?

The first question is based primarily on an ecological approach, focusing on metrics of mosquito community diversity and abundance. The second question attempts to understand what these findings mean in the context of people's interactions with mosquitoes by interpreting the results in the context of qualitative description of human–mosquito interactions. Finally, the third question reflects on what is learned by placing the results of the first two questions in the context of each other.

2 | METHODS

Our methods include traditional ecological field methods of sampling mosquito communities and calculating metrics of abundance and species diversity. In addition, we attempt to place these metrics into the surrounding socio-political context through the simultaneous and interdependent consideration of qualitative data, including interviews and sketch maps. Using this mixed-methods approach, we investigate how the mosquito–human interactions change across an urban gradient as a consequence of changes to ecological and social environments. The following methods section is purposefully written in a narrative way, intertwining the entomological and social methods used, rather than presenting them as separate methods, in an effort to avoid presenting this work

as a 'view from nowhere', implying that we are somehow neutral in the process (Haraway, 1988). This is especially important given the mixed-methods approach used here because community members' interactions with us as researchers of mosquitoes influenced our discussions with them during formal interviews. It also makes it easier to recognize our own positionality in the production of this study, particularly our positions as outsiders to the residents of Sarjapur, and recognize the knowledge produced as situated (Haraway, 1988).

2.1 | Study area and site selection

Sarjapur is a peri-urban town located on the southeastern periphery of Bengaluru, Karnataka, India. Although historically an agricultural area, Sarjapur is currently (as of August 2021) the site of two planned special economic zones, hundred-acre campuses of two major information technology (IT) companies in the country. Currently under construction, these two developments are together projected to employ over 34,000 people (Jyothi, 2012), and have spurred the development of new residential complexes in the area. Large tracts of land in the otherwise rural periphery of Sarjapur are being developed by housing developers to provide single-family homes in gated communities to the IT professionals immigrating to Sarjapur. These are planned communities whose public infrastructure (e.g. roads, pipes and vegetation) is managed by the housing developer. In the town of Sarjapur itself, high-density housing exists in the form of 'sheet houses' (one-story homes with corrugated tin roofs) on the outskirts and multi-story apartment buildings in town (Figure 1). It is in the context of this large-scale development that this study took place.

Within this region, we used a randomized site selection stratified across four land classes to select 16 sites. Land classes were chosen to represent four characteristic land types of the region based on their per cent of impervious surface and housing type, a qualitative measure of urbanization and an indicator of socioeconomic status (Nagendra et al., 2013). Impervious surface was measured via an unsupervised land class classification of Sentinel 2 data from January to March 2019 (Frank et al., 2004, described in detail in Supporting Information S1) and approximated the amount of impervious surface in a 100 m radius surrounding each site. This resulted in the following land classes: rural (low impervious surface, no housing), village (moderate impervious surface, traditional housing), town (high impervious surface, traditional housing) and colony (moderate impervious surface, Western-style housing) (Figure 1). We divided Sarjapur into four blocks, corresponding to the East–West and North–South layout of the primary road system and associated development, and selected sites so that each block contained one site of each land class. Sites were at least 250 m from all other sites and over 1 km from sites of the same land class, except for town sites, which were clustered around the more highly developed centre.

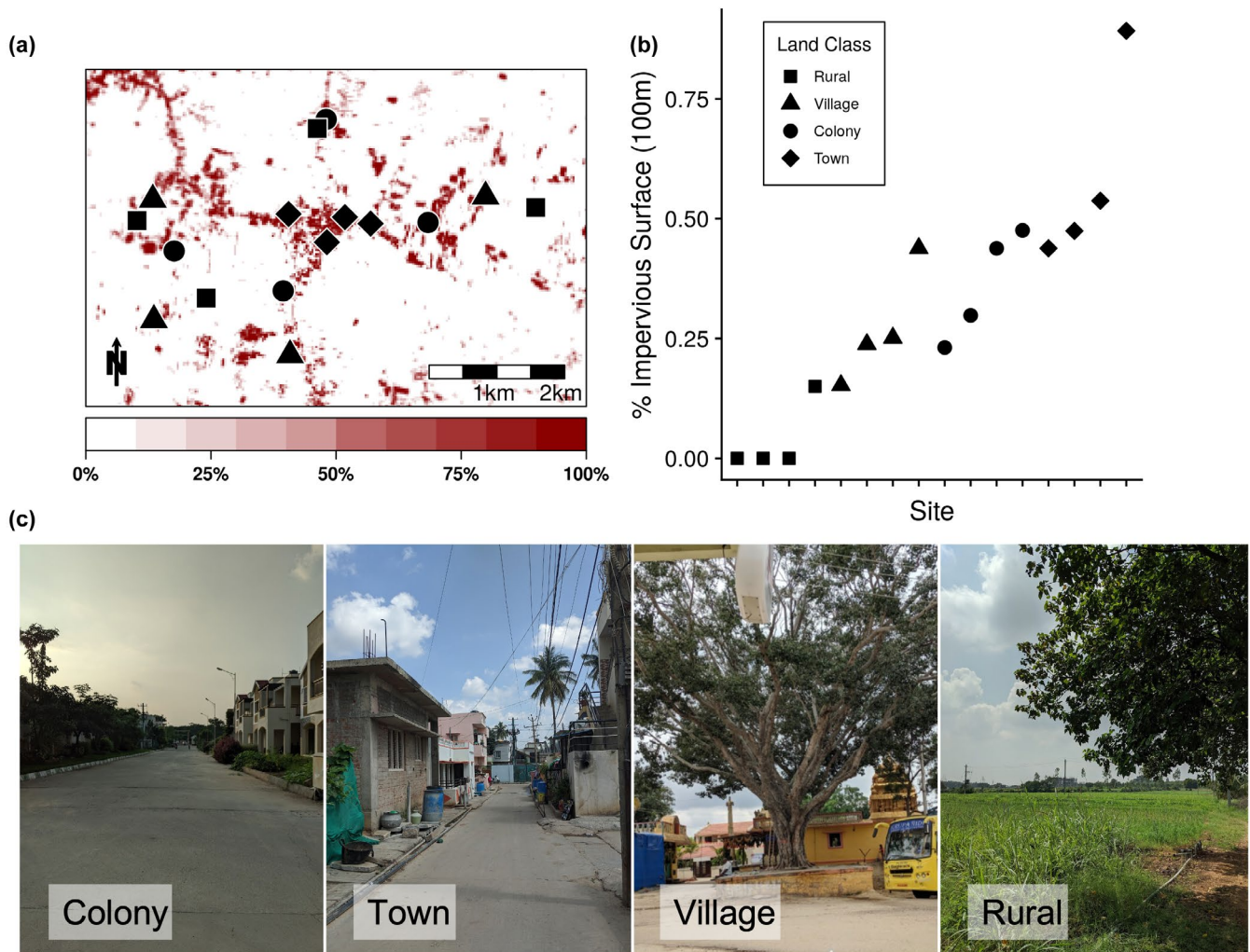


FIGURE 1 Study sites in Sarjapur, Karnataka, India. (a) Map of sites in Sarjapur, Karnataka, India. Symbols represent land classes (square: Rural, triangle: Village, circle: Colony and diamond: Town). Colour shading represents the per cent of impervious surface within each 30 m pixel, as illustrated on the colour bar on the bottom. (b) A plot of each site's proportion of impervious surface in the surrounding 100 m radius. (c) Photos of typical sites of each land class

2.2 | Data collection

Two researchers, MVE and SB, visited each site at least weekly from August to December 2019 to collect mosquito samples and conduct interviews. We visited each neighbourhood regularly and took part in many formal and informal conversations throughout these 4 months. This allowed us to establish a presence at the site, rather than a one-time extractive sampling regime reminiscent of 'parachute research', when researchers 'parachute in' to collect samples without meaningfully interacting with local community members or researchers (Lancet Global Health, 2018). This familiarity with residents created a rapport that helped to recruit interview participants and conduct in-depth interviews. Weekly visits allowed us to directly observe changes to the landscape and mosquito community described in the interviews at a fine temporal scale. We conducted entomological sampling via CDC light traps and oviposition traps at the centre of each site, with the permission from the resident or owner of that site. This person then served as our primary contact

in the community for the interview portion of our study. As local experts, these community members also identified specific areas for trapping that were protected from disturbance and which they believed would successfully trap mosquitoes. Traps were placed in these identified areas, geolocated with a GPS device and were used as the centre of each 100 m site for subsequent analyses.

Oviposition traps consisted of a 1 L plastic container filled with 750 ml nutrient infused water. Nutrient infused water was prepared by mixing 20 L water with 50 g of ground cat food and allowing the mixture to sit for 3 days at room temperature. The oviposition container had two holes 1 cm from the top to allow for water to overflow. We suspended a plastic cover 10 cm above the container to prevent rain and debris from entering the container. We installed two oviposition traps at approximately 1.5 m height to protect traps from livestock and 5 m apart at each site from 26 to 28 August 2019, and then sampled weekly for larvae until 11 November 2019, a total of 176 samples across the 16 sites. To sample, we filtered the contents of the trap through a fine-mesh filter. The water was returned

to the container and we refilled the container with infused water to replace any water lost due to drying. While sampling, we often took the opportunity to discuss the mosquitoes found in that week's collection with residents and describe the different life stages of mosquitoes using collected samples in a clear container as an example. This provided context for our interviews with community members about mosquito habitat and its relation to water. For example, as one community member mentioned, 'I had heard of [mosquito larvae in water], but I had not seen it with my own eyes. But you both proved to us that mosquitoes can emerge from water'.(M01) All larvae and pupae were brought to the laboratory at Azim Premji University, where they were reared to adults, frozen at -40°C , and identified to species following (Christophers, 1933; Das et al., 1990; Tyagi et al., 2014). Weekly abundances were averaged across the two oviposition traps. In instances where one trap failed during a week (e.g. tipped over or broken; 12/176 samples), we only included the working trap.

We also sampled monthly for adult mosquitoes using CDC light traps (John Hock Company and Arcturus Labs). We conducted this sampling once a month from September to November, trapping each site three times for a total of 48 trap nights. Traps were hung between 1.5 and 2 m from the ground in a covered area, to protect from rainfall. Lights were removed from the trap and traps were baited with approximately 1 kg of dry ice in an insulated plastic container hung directly next to the trap. Traps were placed in the morning and collected 24 hr later. Adult mosquitoes were frozen at -40°C and identified to species following (Christophers, 1933, Das et al., 1990, Tyagi et al., 2014). As with oviposition sampling, we often shared the results of these adult catches with residents to spark discussion of mosquito burdens. At the end of the sampling period, these results were shared with community members through the distribution of a multilingual brochure as a form of strategic communication.

Throughout the entomological sampling period, we also undertook semi-structured interviews with community members at each site, except for the rural sites which did not have houses nearby. Interviews focused on household water access and individuals' interactions with mosquitoes. The full methods for this are described in Evans et al. (2020). Briefly, we recruited 21 community members through a combination of spatial stratification across housing types, opportunistic sampling and snowball sampling (Stratford & Bradshaw, 2016). Interviewees were adults over the age of 18 who managed their household's water in some capacity. Due to low literacy rates, verbal consent was obtained prior to each interview and each interview was audio recorded, translated from Kannada or Hindi, when necessary, and transcribed. Interviews consisted of a semi-structured interview and sketch mapping exercise, and generally lasted 45 min. The interview focused on experiences with water access and perceptions of mosquito risk in relation to water and the environment. We asked participants to identify areas with high mosquito burden on satellite map imagery, referred to as sketch maps, and discuss the environmental causes of spatial patterns of mosquitoes. In some instances, community members accompanied us to these identified areas to discuss them in more detail.

Although our recruitment strategy was not specifically designed to yield a representative sample of the population, the combination of the heterogeneous nature of an urbanizing area and our site stratification across housing types resulted in a variety of socio-demographic characteristics among the participants. We spoke with 12 women and 9 men, ranging in age from 19 to 75. Our participants included families resident to Sarjapur for multiple generations (12/21) as well as new migrants, which included people working in a variety of industries, such as IT, security, housekeeping and taxi driving. None of the colony residents, who all held graduate degrees and salaried jobs, were from Sarjapur. Due to this range of demographics, participants occupied different positions along various axes of power (e.g. capital, social, political, etc.), with consequences for their everyday experiences (Truelove, 2011). A more in-depth analysis of power and everyday practice concerning water and mosquitoes in Sarjapur can be found in Evans (2020).

2.3 | Data analysis

We conducted analyses of the entomological data, interview transcripts and georeferenced sketch maps simultaneously, allowing for the synthesis of observations across these different forms of knowledge. In practice, this meant pairing results from analyses of the entomological data to the transcribed interviews and sketch maps. By interpreting these results together, we noted where they did and did not agree and why. We investigated the effect of land class and impervious surface on adult mosquito diversity, adult mosquito abundance and oviposition trap abundances using regression in a Bayesian framework that accommodated random effects and non-normal distributions (McNeish, 2016). We coded interview transcripts in Atlas.ti using a narrative approach to thematic analysis, which 'treats interview data as accessing various stories or narratives through which people describe their worlds' (Silverman, 2003). Our coding process paid particular attention to community members' interactions with mosquitoes and their agency and control over these interactions. Sketch maps were manually georeferenced and were analysed alongside the interviews and entomological data using a process of grounded visualization (Knigge & Cope, 2006). Results from the analysis of the entomological data and thematic analysis were interpreted in the context of finer scale spatial patterns denoted on the sketch maps and their placement in the satellite imagery depicting urbanization (e.g. maps of impervious surface and satellite imagery). We iteratively visualized sketch maps and maps of impervious surface that were linked to interview transcriptions and entomological data. If, for example, a particular area of a site was mentioned in an interview as having a characteristic that is predictive of mosquito burdens, we could connect that to the map of the site and that area's location relative to the pattern of impervious surface at the site.

We calculated asymptotic estimates of Hill numbers from the adult mosquitoes sampled with CDC light traps for each site, aggregating across all three sampling months. Hill numbers are a set of

diversity metrics that incorporate the number of species and their relative frequencies in a sample to estimate species diversity in units of 'the equivalent number of equally abundant species that would be needed to give the same value of the diversity measured' (Gotelli & Chao, 2013). Hill numbers are defined following Equation (1):

$$Dq = \left(\sum_{i=1}^S p_i^q \right)^{1/(1-q)}, \quad (1)$$

where each species i in the total number of species (S) has relative abundance p_i and the parameter q , referred to as the order, controls the sensitivity of the measure to the community's evenness. For example, when $q = 0$, 0D is equivalent to species richness, and the relative weight given to common species increases with increasing orders. For this study we calculated 0D , 1D and 2D , corresponding to species richness, the exponential form of Shannon entropy and the inverse of the Simpson concentration (Chao, Chiu, & Jost, 2014). Because the number of individuals differed greatly across sites, we used the asymptotic estimate of Hill numbers to compare these diversity metrics across these sites by extrapolating each metric to a theoretically infinite sample size following Chao, Gotelli, et al. (2014) using the iNEXT package (Hsieh et al., 2016) in R v. 3.6.3 (R Core Team, 2018). We tested for an effect of land class and impervious surface on these metrics using generalized linear models, with the response variable transformed by subtracting 0.999 to better approximate a gamma distribution.

We used repeated-measures generalized linear mixed models to test for the effect of land class and impervious surface on adult mosquito abundance from the CDC light traps and abundance of *Aedes* mosquitoes from the oviposition traps. Because CDC light traps baited with dry ice have low-catch rates of anthropogenic *Aedes* species (Sriwichai et al., 2015), we used oviposition traps specifically to target *Aedes* abundances in addition to the CDC light traps. The abundance of the CDC light traps was the abundance of all mosquitoes caught in the trap for each site \times month combination. The abundance measure from the oviposition traps represented the mean across the two traps at each site for each weekly sample, rounding up to the nearest integer.

All statistical models were implemented in Stan via the BRMS package (Bürkner, 2017) in R v. 3.6.3 (R Core Team, 2018). We tested for potential spatial autocorrelation in our response variables using the Mantel test, finding no evidence of spatial autocorrelation (Table S1). We inspected the trace plots and effective sample size and performed posterior predictive checks of each model to ensure convergence. Model formulas, priors and sampling settings are noted in Supporting Information S2. Model inference was implemented by calculating the Bayes factor (BF) for a full model compared to a null model. BFs are the ratio of the likelihood of the data given the null hypothesis to the likelihood of the data given the alternative hypothesis, in this case a hypothesized relationship between a covariate (e.g. land class or impervious surface) and the response variable (Makowski et al., 2019). This metric indicates the relative evidence for one model over another, given the data, with values above 1 corresponding to more evidence for the alternative hypothesis (e.g.

BF = 2 indicates the data are twice as likely to occur under the alternative hypothesis than the null hypothesis). We follow the language suggested by Jarosz and Wiley (2014) in our reporting of BFs, and purposefully choose not to provide thresholds or benchmarks for BFs in an effort to reject the arbitrary categorization of statistical measures (Wasserstein et al., 2019).

2.4 | Ethics statement

This research was approved by the University of Georgia Institutional Review Board (PROJECT0000227) and the Indian Ministry of Home Affairs. Participants were provided a summary of the research and their rights as participants in their native language. Verbal consent was given by all participants prior to participating.

3 | RESULTS

3.1 | Mosquito diversity

In the words of one community member, "Mosquitoes, they're everywhere. There's nothing to avoid them" (G01). Sampling via CDC light traps caught 7,345 adult mosquitoes across 47 trap nights (one trap night of the total 48 failed), consisting of 19 mosquito species (Table 1). The majority (95.8%) of mosquitoes were *Culex quinquefasciatus* (southern house mosquito), and three sites (one village,

TABLE 1 List and count of species caught in CDC light traps over 3-month sampling period

Species	Number	Proportion
<i>Culex quinquefasciatus</i>	7,034	95.77
<i>Culex gelidus</i>	60	0.82
<i>Aedes indicus</i>	56	0.76
<i>Aedes vittatus</i>	50	0.68
<i>Armigeres subalbatus</i>	37	0.5
<i>Culex vishnui</i>	21	0.29
<i>Culex tritaeniorhynchus</i>	15	0.2
<i>Aedes albopictus</i>	14	0.19
<i>Aedes aegypti</i>	10	0.14
<i>Culex psuedovishnui</i>	10	0.14
<i>Culex sitiens</i>	10	0.14
<i>Culex bitaeniorhynchus</i>	9	0.12
<i>Anopheles stephensi</i>	7	0.1
<i>Aedes spp. B</i>	4	0.05
<i>Anopheles subpictus</i>	4	0.05
<i>Aedes spp. A</i>	1	0.01
<i>Aedes thomsoni</i>	1	0.01
<i>Culex mimeticus</i>	1	0.01
<i>Mansonia uniformis</i>	1	0.01

one town and one rural site) only had *Culex quinquefasciatus* in their traps. Rural sites tended to have a higher species richness (0D) than sites in other land classes, however, the 95% CI overlapped for all land classes and there was little evidence in favour of an effect of land class on mosquito species richness (0D BF = 0.432, Figure 2). Although all sites had high unevenness due to the dominance of *Culex quinquefasciatus*, there was strong evidence for an effect of land class on higher order Hill numbers (1D BF = 15.71; 2D BF = 48.22; Figure 2), with higher diversity at rural sites than other land classes. In comparison, there was weak evidence for a relationship between impervious surface and all order of Hill numbers at the site level (0D BF = 1.12; 1D BF = 2.27; 2D BF = 2.73; Figure 2).

Community members' interactions with mosquitoes described mosquitoes as a pest, most often in the form of bites and associated disease risk, but also mentioned finding larvae in household water storage or buzzing while sleeping. Experiences of mosquito diversity tended to focus on distinguishing *Aedes* mosquitoes from other mosquito genera within a site. *Aedes* mosquitoes are easily identified by their black and white markings and have been the focus of public education campaigns given their role in dengue and chikungunya transmission. However, in addition to visual traits (e.g. coloration, size, etc.), people also distinguished between mosquito species based on their activity times, noting the difference between diurnal and crepuscular mosquitoes and how this influenced their interactions with mosquitoes. One community member described the timing of her

interactions with mosquitoes, demonstrating in-depth knowledge of mosquito behaviours:

The white-striped ones [referencing *Aedes* mosquitoes] would be biting us around now [late afternoon]. It almost stops by the time the sun is down. The black ones [referencing *Culex* mosquitoes] bite in the night.
(H03)

Some residents mentioned their habit of closing the doors and windows to their home in the early evening to keep mosquitoes from entering. *Culex quinquefasciatus* is a crepuscular and nocturnal biter, and residents' descriptions of their interactions with mosquitoes align with the strong dominance of *Culex quinquefasciatus* found in the entomological surveys, although these mosquitoes are rarely mentioned in public health campaigns in Bengaluru. From a medical entomology perspective, diversity of species matters because it facilitates the transmission of multiple mosquito-borne diseases in a region. For people living with mosquitoes, diversity matters because it informs the measures that people can take to avoid mosquitoes. However, given that all sites were so highly dominated by the 'domesticated' *Culex quinquefasciatus*, there was little perception of the difference in mosquito diversity across sites as revealed by conventional ecological metrics (e.g. Hill numbers) that better incorporate rare species. Importantly, because rural areas contained no housing, we did not interview community

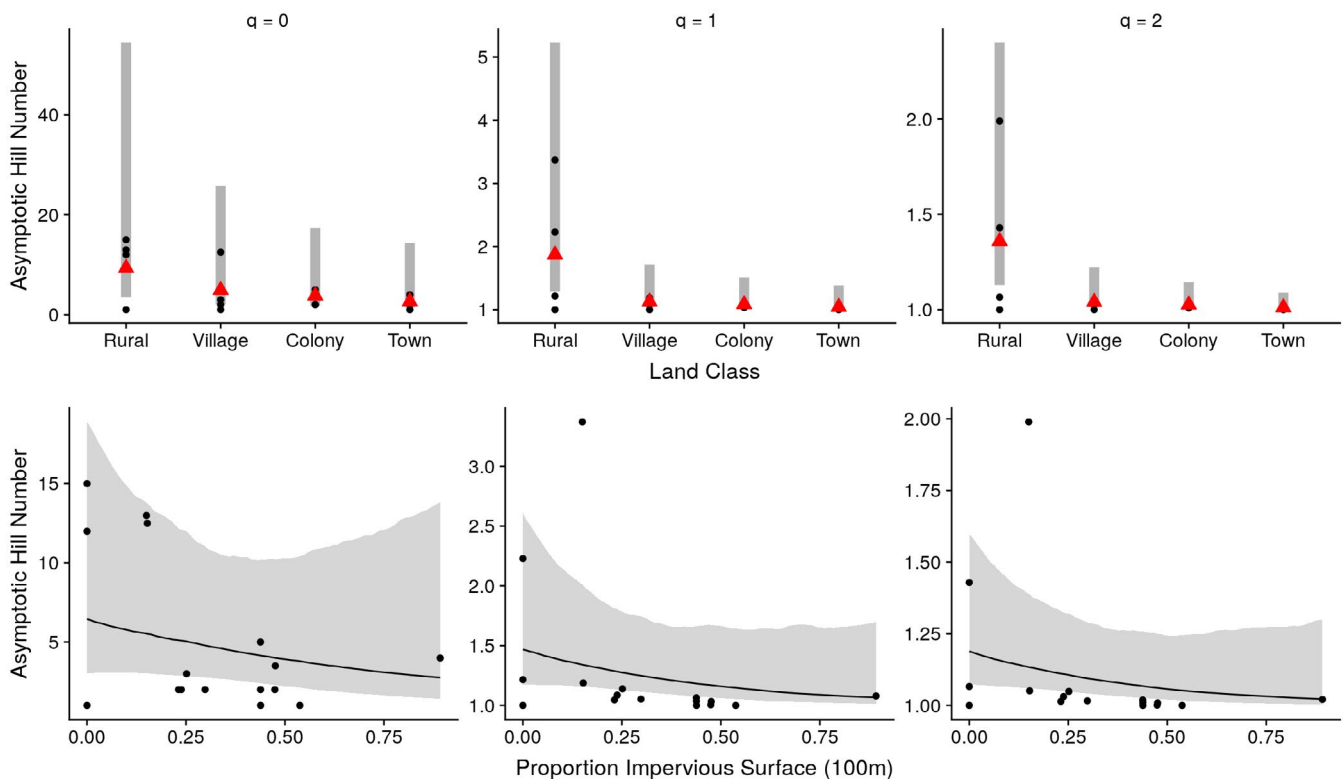


FIGURE 2 Effect of land class and impervious surface on Hill numbers. Top row: Effect of land class on asymptotic Hill numbers 0D , 1D and 2D . Grey bar represents the 95% credible interval (CI) and red triangle represents the median. Raw data are plotted in black circles. Bottom row: Effect of impervious surface on asymptotic Hill numbers 0D , 1D and 2D . Line represents the median effect and shaded ribbon represents the 95% CI. Raw data are plotted in black circles

members at rural sites, where mosquito diversity was highest, and so this diversity may not have been apparent to community members who did not regularly use rural areas.

3.2 | Mosquito abundance

We found no evidence for a difference in overall adult abundance, as measured by CDC traps, or *Aedes* mosquito abundance, as measured by oviposition traps, across the urban gradient in Sarjapur. Statistical tests revealed no evidence for differences in adult mosquito abundance of all species caught via CDC traps across land class (BF = 0.434, Figure 3) or impervious surface (BF = 0.954, Figure 3). Our oviposition traps targeted *Aedes* mosquitoes, catching three species: *Aedes aegypti* (yellow fever mosquito) (54.1%), *Aedes albopictus* (tiger mosquito) (43.1%) and *Aedes vittatus* (2.73%). In addition to *Aedes* mosquitoes, we also caught one *Anopheles stephensi* individual in the oviposition traps. We found little evidence for an effect of land class (BF = 0.647, Figure S1) or impervious surface (BF = 1.202, Figure S1) on *Aedes* abundance in oviposition traps.

However, peoples' experiences with mosquitoes differed greatly across neighbourhoods and did not always follow the differences in abundances that we saw from entomological sampling.

One colony site had a relatively high abundance of mosquitoes compared to other sites, but the residents of this neighbourhood did not express concern about the mosquito situation given their ability to request fogging by the development manager or to simply avoid an area that they use for leisure (Figure 3). In contrast, a site in town had much lower abundances, but fogging was infrequent, and residents could not avoid areas with high mosquitoes, given their reliance on these outdoor spaces for daily activities (Figure 3).

In the sketch mapping exercise, community members identified areas with high mosquito burdens and described their interactions with mosquitoes in those areas. These areas included places with drainage (11/21), solid waste (13/21) or unmanaged vegetation (9/21). The size of these areas ranged from 1 to 4,000 m² with a median size of 72.3 m². Many of these areas were close to community members' homes and unavoidable because residents conducted everyday tasks in these outdoor spaces. One woman identified a patch of vegetation next to her home with a high burden of mosquitoes that she could not avoid:

Yes, I can't help it, I have to do my chores there. Yes, there are a lot of mosquitoes there. I have to wash the dishes there, clean my clothes also.

(L02)

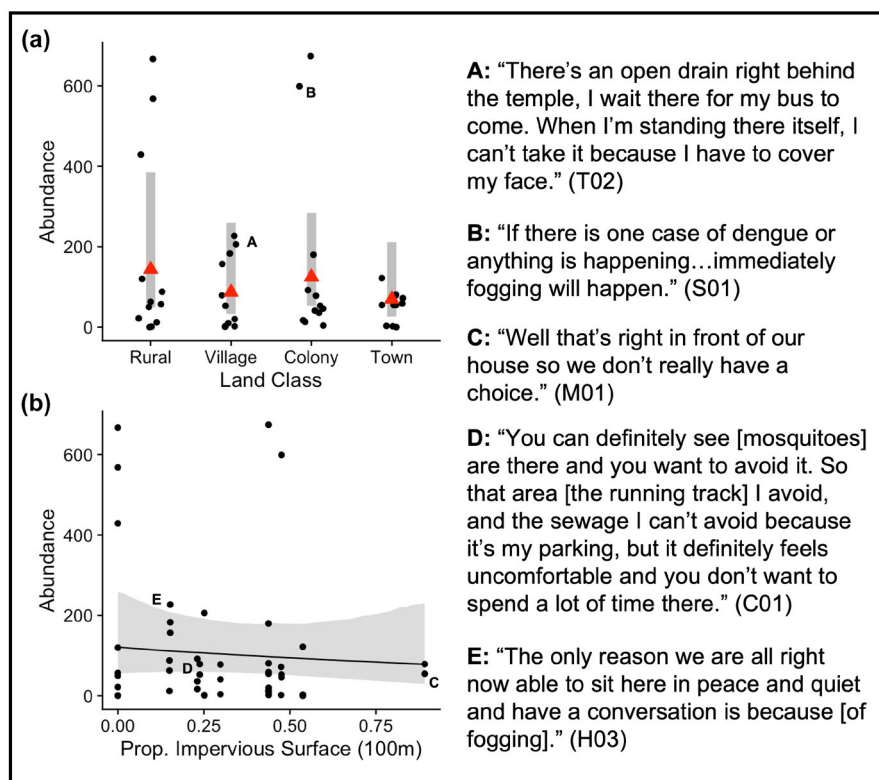


FIGURE 3 Effect of land class and impervious surface on adult abundance in CDC light traps and everyday experience with mosquitoes. (a) Effect of land class on adult abundance in CDC light traps. Grey bar represents the 95% credible interval (CI) and red triangle represents the median. Raw data are plotted in black circles. (b) Effect of impervious surface on adult abundance in CDC light traps. Line represents the median effect and shaded ribbon represents the 95% CI. Raw data are plotted in black circles. In both plots, points labelled with letters correspond to quotes from community members on the right-hand side of the plot

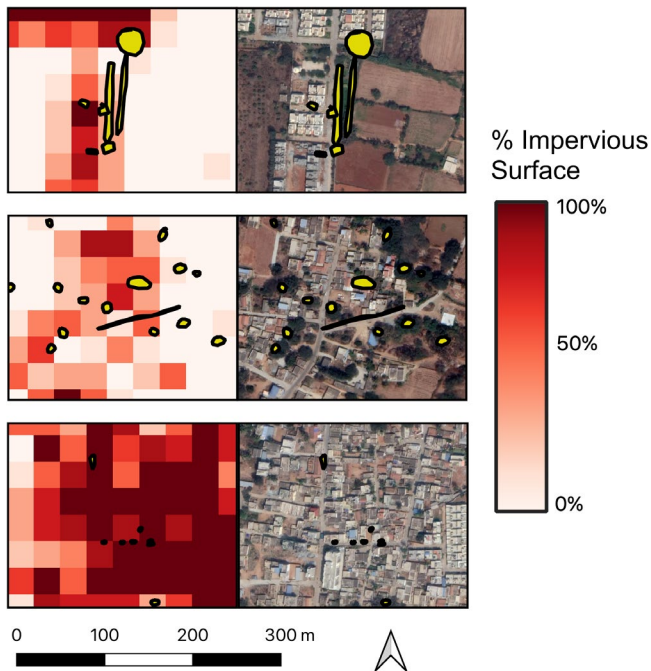


FIGURE 4 Areas of high mosquito intensity (yellow polygons) identified in sketch mapping exercise across three sites. Areas are shown over the per cent impervious surface (left) and satellite imagery (right). Satellite imagery source: Google

Furthermore, some community members lived adjacent to open drains or waste disposal areas. One community member was dismayed by the proximity of his house to the sewage infrastructure because ‘the entire village’s filth comes in front of [his] house’ (K02). These narratives demonstrate that individuals differed in their ability to mitigate exposure to mosquitoes by changing their behaviour or reducing mosquito abundances in outdoor spaces through vector control.

However, these fine-scale spatial differences were obscured when we aggregated impervious surface to the site level, defined by the surrounding 100 m, for use in our statistical models. When we used grounded visualization to consider the sketch maps in the context of remotely sensed impervious surface data and satellite imagery, we found that the areas identified by residents as having high mosquito burdens were areas of lower impervious surface than the surrounding landscape in 7 of 11 sites where residents marked mosquito habitat (Figure 4). However, there was no significant difference in mean impervious surface between the overall site mean and individually identified mosquito habitats, as determined by a paired t-test ($t = 0.52522$, $df = 61$, $p\text{-value} = 0.6013$). This suggests that the spatial resolution of our site-level metric (30 m) was too coarse to identify these vegetative features which served as mosquito habitat within otherwise developed landscapes.

4 | DISCUSSION

Changes to mosquito community composition and abundance across an urban gradient are one component of intra-urban heterogeneity

in mosquito-borne disease burdens. However, it is also important to understand if these changes to the mosquito community translate to changes in peoples’ experiences with mosquitoes, including both their perception of exposure and their stories of these encounters. We used an integrative approach to address these questions in parallel and a mixed-methods methodology that includes both quantitative and qualitative analyses and multiple epistemological viewpoints. We found that mosquito communities were more diverse in less urbanized, rural areas, but that the dominance of all communities by *Culex quinquefasciatus* meant that there was little perception of this difference across urban land classes by the population. In contrast, we found no evidence for a quantitative difference in mosquito abundance across an urban gradient, while qualitative analysis revealed that peoples’ experiences with mosquitoes were mediated by how they interacted with outdoor spaces.

We found a difference in mosquito diversity across land classes, however, this difference did not translate into differences in individuals’ experiences with mosquitoes. The mosquito community in Sarjapur was more diverse in rural land classes than in the village, town or colony land classes, which contained a nested subset of the full community. This homogenization of the mosquito community has been seen across other urbanization or development gradients (Câmara et al., 2020; Loaiza et al., 2017) and is hypothesized to be due to changes in host composition (Goodman et al., 2018) microclimate (Townroe & Callaghan, 2014), and larval habitat types (Wilke et al., 2019). However, even rural areas had high abundances of *Culex quinquefasciatus*, which dominated the community at all land classes, and we found no evidence for a difference in total mosquito abundance across land class. Similarly, community members perceived little difference in mosquito abundance across the urban gradient of Sarjapur (on the scale of kilometres), although they did experience localized differences in mosquito burdens (on the scale of metres). Other studies of *Culex* species across urban gradients have found that the abundance of *Culex* species decreases with increasing urbanization (Field et al., 2019; Rochlin et al., 2016), although these effects may depend on the larger regional context (Bowden et al., 2011). Sarjapur is peri-urban, retaining characteristics of both agricultural and urbanized land classes, which may allow for similar abundances of *Culex* mosquitoes across the city.

In this study, mosquito abundance was similar across sites, but peoples’ experiences of mosquito burdens differed, primarily due to individuals’ relationships with outdoor spaces (Figure 3). One difference was in an individual’s ability to shift their behaviour to avoid interacting with mosquitoes. For upper-class households living in colonies, outdoor space was primarily used for leisure or exercise, and individuals were able to change their schedule or avoid these areas when necessary. Other households, especially those without indoor plumbing, used outdoor space for everyday domestic tasks, and their ability to shift this schedule or access another space for this purpose was limited. These examples illustrate how individuals’ vulnerabilities differ in outdoor spaces, drawing attention to the intersection between characteristics of the physical space and an individual’s ability to avoid or mitigate hazards of that space, such as exposure

to mosquito-borne disease (Watts & Bohle, 1993). Viewing disease exposure within the context of vulnerability has proven a useful approach for placing spatial patterns in infectious diseases within their social, political and economic contexts (McLafferty, 2010). Similarly, we found that individuals' power to control an outdoor space, via fogging or avoiding the space, helped reduce feelings of vulnerability to mosquito-borne disease exposure; yet, this power was limited to wealthier, upper-class individuals living in colonies that could pay for services. Neighbourhoods that relied on municipal vector control reported limited success in requesting fogging or larval source management when needed. Our findings regarding the everyday differences in exposure and vulnerability to mosquitoes suggest that vulnerability may be a useful lens through which to consider inequalities in mosquito-borne disease burdens as well (Chang et al., 2014).

One tension that arose through this study was the mismatch of spatial scale. Our study design focused on intra-urban heterogeneity at the scale of the city, defining each site as an area of 100 m radius. However, the sketch mapping exercise revealed that people conceptualized their experience with mosquitoes on a much finer spatial scale. Other studies that consider the lived experience of pathogenic landscapes have found that people visualize disease risk at fine spatial scales, and the scale of conceptualization can be related to often conflicting notions of responsibility and governance held by individuals and municipalities (Bempah et al., 2020; Nading, 2014; von Hedemann et al., 2015). Between-household variation in exposure to mosquito bites can be on a magnitude of 100x difference (Guelbéogo et al., 2018), and our findings suggest that high levels of spatial variation may characterize outdoor spaces as well. Furthermore, it has been shown that landscape heterogeneity is predictive of mosquito diversity, in addition to the dominant land class (Chaves et al., 2011). Individuals also identified patches of vegetation within a matrix of higher impervious surface as mosquito habitat, which can act as refugia for mosquitoes (Hendy et al., 2020). However, sketch mapping alone may not be able to identify all sources of mosquitoes in an area, as people's movement and knowledge is constrained to areas they interact with. Top-down vector control campaigns conceptualize patterns in mosquito burdens at a coarser-spatial resolution, and across a large geographical area, such as a whole city. Given community members' in-depth local knowledge of the environment (Dickin et al., 2014; Nading, 2014), they conceptualize mosquito burdens at a finer scale than top-down vector control campaigns. Our discussions with community members illustrated their knowledge of mosquito dynamics in their own neighbourhoods, a type of place-based knowledge that typifies a 'bionomic' approach to vector control that relies on ecological relationships to identify the most productive larval habitats (Kelly & Lezaun, 2013). As has been suggested elsewhere (Bempah et al., 2020; Biehler et al., 2019; Dongus et al., 2007), inclusion of local knowledge via participatory mapping and visualization activities in addition to standard entomological sampling is a promising opportunity for an alternative approach to vector control that includes place-based ecological knowledge.

This interdisciplinary study also contributes to the 'conventional' medical entomology understanding of mosquito-borne disease in

Bengaluru. Most mosquitoes captured by our sampling method were of the *Culex* genus, which is the primary vector of lymphatic filariasis in India (NVBDCP, 2020). Prior to national mass drug administration campaigns in the late 1990s, over 40% of the global cases of lymphatic filariasis were in India (Agrawal & Sashindran, 2006). At present, prevalence rates are below 1% nationally (NVBDCP, 2020) and the disease is not endemic to Bengaluru (Sabesan et al., 2013). Given the high abundances of *Culex quinquefasciatus*, however, local transmission remains possible if the parasite is introduced. We focused on *Aedes* mosquitoes in our study because the Bengaluru branch of the National Vector Borne Disease Control Program (NVBDCP) targets *Aedes*-borne diseases. The mosquito abundances found in our study are similar to those found by the NVBDCP (Reegan et al., 2018, 2020) and incidence of dengue in Bengaluru was unusually high during this study period (Yasmeen, 2019). Community engagement is a pillar of the NVBDCP national strategy (NVBDCP, 2020), although this type of involvement was not mentioned in any interviews with community members in Sarjapur. In general, residents of Sarjapur exhibited high levels of knowledge regarding mosquito ecology and disease transmission and detailed knowledge of the surrounding environment but were not involved with decision making regarding vector control. Strengthening community-based vector control in the area by transferring decision making power about when and where to conduct vector control to these local experts could increase the efficacy of vector control programs by better targeting local hotspots of mosquito abundance.

Using an integrative approach allowed us to gain insight into differences that were not revealed by either method on its own. Through interviews, we expanded our conceptualization of risk from a quantity (e.g. the abundance of mosquitoes or the basic reproductive number) to one that incorporated peoples' lived experience with mosquitoes, highlighting a difference that was otherwise missed by our entomological analysis. The collection of mosquito samples via ecological sampling created a standardized, longitudinal dataset that was easily paired with remotely sensed imagery, to test quantitative hypotheses regarding urbanization and mosquito dynamics. The simultaneous collection of entomological and qualitative data also created opportunities for exploring the environment and everyday spaces with community members as they helped identify locations for sampling. Although these interactions occurred outside of the formal interview, we believe they enhanced our discussions with community members about the relationship between the environment and mosquitoes by providing tangible examples of these relationships, similar to other place-based interviewing methods (Holton & Riley, 2014). However, an integrative approach does have additional costs associated with it, particularly in the time and expertise needed to deploy multiple methodologies. While this does not require that an integrative approach must necessarily sacrifice depth for its epistemological breadth, it does suggest that providing structural and institutional support for facilitating research across disciplines, such as through collaborative, team-based science (Leahey, 2016), could reduce these costs and encourage more integrative research.

The present lack of interdisciplinary approaches to mosquito-borne diseases is not simply coincidental, but a legacy of colonial medicine and the current landscape of funders that reproduces North–South colonial power dynamics (Green, 2019; Mitchell, 2002). This contributes to an epistemological hierarchy that privileges medical and biological science research over social science research (Leach & Scoones, 2013). This study challenges the politics inherent in knowledge production (King & Tadaki, 2018) by placing multiple types of knowledge in *conversation*, not *opposition*, and refusing to ‘validate’ narrative data with biophysical data. Other integrative fields, such as critical physical geography (Lave et al., 2014), find that epistemological pluralism strengthens and contextualizes results from the individual disciplines. Our findings agree; here, the narrative analysis situates our entomological samples in the social context by clarifying for whom and how changes in mosquito abundance and diversity may translate to changes in disease risk.

We found that mosquito community diversity was higher in rural land classes than the other three land classes, but did not find evidence for a difference in mosquito abundance across the urban gradient of Sarjapur. However, semi-structured interviews revealed a difference in how individuals experienced mosquito burdens, particularly in their vulnerability to exposure. Individuals who used outdoor space for leisure activities were able to avoid areas during peak mosquito activity periods. Those who relied on outdoor space for domestic tasks had less flexibility and often could not avoid mosquitoes, placing themselves at higher exposure to bites. Using an integrative approach shed light on the relationship between ecological indices of diversity and abundance and peoples' everyday experience with mosquitoes, something that would not have been possible had we relied on a single discipline. An interdisciplinary approach was used as the foundation of the ‘Emerging Diseases in a Changing European Environment’ (EDEN) project (Randolph, 2006), but is rarely applied in the Global South, where urbanization rates and climate change burdens are particularly high. While we are not suggesting that all ecological studies should be integrative, we found an integrative approach to be beneficial to the study of infectious disease in urban settings.

ACKNOWLEDGEMENTS

We thank everyone who participated in interviews for their time and thoughtful conversations that made this work possible, as well as the broader community of Sarjapur for allowing us to conduct our entomological surveys in their neighbourhoods. We also thank Dr. Kavita Isvaran for her advice and support conducting this field work and Dr. Jennifer Rice and Dr. Jerry Shannon for their feedback on earlier drafts of the manuscript. We thank two anonymous reviewers for their thoughtful feedback and Jayanth Vyasanakere for translating the abstract into Kannada. This study was funded by a National Science Foundation Graduate Research Fellowship (MVE).

CONFLICT OF INTEREST

The authors confirm that they have no conflict of interest to declare.

AUTHORS' CONTRIBUTIONS

M.V.E., J.M.D., C.C.M. and S.M. conceptualized the project; M.V.E., S.B. and S.M. designed the methodology; M.V.E. and S.B. collected the data and analysed the data; S.M. supervised the administration of the project; M.V.E. led the writing of the manuscript. All authors contributed critically to the drafts and gave final approval for publication.

DATA AVAILABILITY STATEMENT

Original audio files were translated and transcribed and subsequently deleted to protect the anonymity of participants. Transcriptions are saved on a secure password-protected data archive and cannot be shared without the consent of participants and a data use agreement. Geographic information, including site locations and sketch maps, are similarly protected. Entomological data and code to conduct the analyses are available on figshare 10.6084/m9.figshare.19154147 (Evans et al., 2022).

ORCID

Michelle V. Evans  <https://orcid.org/0000-0002-5628-0502>

Siddharth Bhatnagar  <https://orcid.org/0000-0001-9178-168X>

John M. Drake  <https://orcid.org/0000-0003-4646-1235>

Courtney C. Murdock  <https://orcid.org/0000-0001-5966-1514>

Shomen Mukherjee  <https://orcid.org/0000-0002-2974-4447>

REFERENCES

- Adams, W. (2007). Thinking like a human: Social science and the two cultures problem. *Oryx*, 41, 275–276.
- Agrawal, V., & Sashindran, V. (2006). Lymphatic filariasis in India: Problems, challenges and new initiatives. *Medical Journal, Armed Forces India*, 62, 359–362.
- Alberti, M. (2005). The effects of urban patterns on ecosystem function. *International Regional Science Review*, 28, 168–192.
- Allotey, P., Reidpath, D. D., & Pokhrel, S. (2010). Social sciences research in neglected tropical diseases 1: The ongoing neglect in the neglected tropical diseases. *Health Research Policy and Systems*, 8, 32.
- Balakrishnan, N., Katyal, R., Mittal, V., & Chauhan, L. (2015). Prevalence of *Aedes aegypti*—The vector of dengue/chikungunya fevers in Bangalore City, urban and Kolar districts of Karnataka state. *Journal of Communicable Diseases*, 47, 19–23.
- Becker, B., Leisnham, P. T., & LaDeau, S. L. (2014). A tale of two city blocks: Differences in immature and adult mosquito abundances between socioeconomically different urban blocks in Baltimore (Maryland, USA). *International Journal of Environmental Research and Public Health*, 11, 3256–3270.
- Bempah, S., Curtis, A., Awandare, G., & Ajayakumar, J. (2020). Appreciating the complexity of localized malaria risk in Ghana: Spatial data challenges and solutions. *Health & Place*, 64, 102382.
- Biehler, D., Leisnham, P. T., LaDeau, S. L., & Bodner, D. (2019). Knowing nature and community through mosquitoes: Reframing pest management through lay vector ecologies. *Local Environment*, 24, 1119–1135.
- Bowden, S. E., Magori, K., & Drake, J. M. (2011). Regional differences in the association between land cover and West Nile virus disease incidence in humans in the United States. *American Journal of Tropical Medicine and Hygiene*, 84, 234–238.
- Brown, J. E., Evans, B. R., Zheng, W., Obas, V., Barrera-Martinez, L., Egizi, A., Zhao, H., Caccione, A., & Powell, J. R. (2014). Human impacts have shaped historical and recent evolution in *Aedes aegypti*, the

- dengue and yellow fever mosquito. *Evolution; International Journal of Organic Evolution*, 68, 514–525.
- Bürkner, P. C. (2017). Brms: An R package for bayesian multilevel models using Stan. *Journal of Statistical Software*, 80, 1–28.
- Câmara, D. C. P., Pinel, C. D. S., Rocha, G. P., Codeço, C. T., & Honório, N. A. (2020). Diversity of mosquito (Diptera: Culicidae) vectors in a heterogeneous landscape endemic for arboviruses. *Acta Tropica*, 212, 105715.
- Chang, A., Fuller, D. O., Carrasquillo, O., & Beier, J. C. (2014). Social justice, climate change, and dengue. *Health and Human Rights*, 16, 93–104.
- Chao, A., Chiu, C.-H., & Jost, L. (2014). Unifying species diversity, phylogenetic diversity, functional diversity, and related similarity and differentiation measures through Hill numbers. *Annual Review of Ecology, Evolution, and Systematics*, 45, 297–324.
- Chao, A., Gotelli, N. J., Hsieh, T. C., Sander, E. L., Ma, K. H., Colwell, R. K., & Ellison, A. M. (2014). Rarefaction and extrapolation with Hill numbers: A framework for sampling and estimation in species diversity studies. *Ecological Monographs*, 84, 45–67.
- Chaves, L. F., Hamer, G. L., Walker, E. D., Brown, W. M., Ruiz, M. O., & Kitron, U. D. (2011). Climatic variability and landscape heterogeneity impact urban mosquito diversity and vector abundance and infection. *Ecosphere*, 2, art70.
- Christophers, S. R. (1933). *The fauna of British India, including Ceylon and Burma* (B. S. Sewell & F. W. Edwards, Eds.). Taylor & Francis.
- Das, B. P., Rajagopal, R., & Akiyama, J. (1990). Pictorial key to the species of Indian anopheline mosquitoes. *Journal of Pure and Applied Zoology*, 2, 131–162.
- Dickin, S., Wallace, C., & Elliott, S. J. (2014). Mosquitoes & vulnerable spaces: Mapping local knowledge of sites for dengue control in Seremban and Putrajaya Malaysia. *Applied Geography*, 46, 71–79.
- Dongus, S., Nyika, D., Kannady, K., Mtasiwa, D., Mshinda, H., Fillinger, U., Drescher, A. W., Tanner, M., Castro, M. C., & Killeen, G. F. (2007). Participatory mapping of target areas to enable operational larval source management to suppress malaria vector mosquitoes in Dar Es Salaam, Tanzania. *International Journal of Health Geographics*, 6, 37.
- Evans, M. V. 2020. *An integrative approach to mosquito-borne disease in urban areas* (Doctor of Philosophy). University of Georgia.
- Evans, M. V., Bhatnagar, S., Drake, J. M., Murdock, C. C., & Mukherjee, S. (2022). Data and Code to reproduce “Socio-ecological dynamics in urban systems: An integrative approach to mosquito-borne disease in Bengaluru, India”. *Figshare*, <https://doi.org/10.6084/m9.figshare.19154147.v1>
- Evans, M. V., Hintz, C. W., Jones, L., Shiao, J., Solano, N., Drake, J. M., & Murdock, C. C. (2019). Microclimate and larval habitat density predict adult *Aedes albopictus* abundance in urban areas. *The American Journal of Tropical Medicine and Hygiene*, 101(2), 362–370.
- Field, E. N., Tokarz, R. E., & Smith, R. C. (2019). Satellite imaging and long-term mosquito surveillance implicate the influence of rapid urbanization on *Culex* vector populations. *Insects*, 10, 269.
- Frank, E., Hall, M., Trigg, L., Holmes, G., & Witten, I. H. (2004). Data mining in bioinformatics using Weka. *Bioinformatics*, 20, 2479–2481.
- Franklin, L. H. V., Jones, K. E., Redding, D. W., & Abubakar, I. (2019). The effect of global change on mosquito-borne disease. *The Lancet Infectious Diseases*, 19, e302–e312.
- Gandy, M. (2014). *The fabric of space: Water, modernity, and the urban imagination*. MIT Press.
- Goodman, H., Egizi, A., Fonseca, D. M., Leishnam, P. T., & LaDeau, S. L. (2018). Primary blood-hosts of mosquitoes are influenced by social and ecological conditions in a complex urban landscape. *Parasites & Vectors*, 11, 218.
- Gotelli, N. J., & Chao, A. (2013). Measuring and estimating species richness, species diversity, and biotic similarity from sampling data. In S. Levin (Ed.), *Encyclopedia of biodiversity* (pp. 195–211). Elsevier.
- Green, T. (2019). North-south dynamics in academia. *Journal of African Cultural Studies*, 31, 280–283.
- Gubler, D. J. (2011). Dengue, urbanization and globalization: The unholy trinity of the 21st century. *Tropical Medicine and Health*, 39, 3–11.
- Guelbéogo, W. M., Gonçalves, B. P., Grignard, L., Bradley, J., Serme, S. S., Hellewell, J., Lanke, K., Zongo, S., Sepúlveda, N., Soulama, I., Wangrawa, D. W., Yakob, L., Sagnon, N., Bousema, T., & Drakeley, C. (2018). Variation in natural exposure to anopheles mosquitoes and its effects on malaria transmission. *eLife*, 7, e32625.
- Haraway, D. (1988). Situated knowledges: The science question in feminism and the privilege of partial perspective. *Feminist Studies*, 14, 575–599.
- Hayden, M. H., Uejio, C. K., Walker, K., Ramberg, F., Moreno, R., Rosales, C., Gameros, M., Mearns, L. O., Zielinski-Gutierrez, E., & Janes, C. R. (2010). Microclimate and human factors in the divergent ecology of *Aedes aegypti* along the Arizona, U.S./Sonora, MX border. *EcoHealth*, 7, 64–77.
- Hendy, A., Hernandez-Acosta, E., Chaves, B. A., Fé, N. F., Valério, D., Mendonça, C., de Lacerda, M. V. G., Buenemann, M., Vasilakis, N., & Hanley, K. A. (2020). Into the woods: Changes in mosquito community composition and presence of key vectors at increasing distances from the urban edge in urban forest parks in Manaus, Brazil. *Acta Tropica*, 206, 105441.
- Hirsch, P. D., & Brosius, J. P. (2013). Navigating complex trade-offs in conservation and development: An integrative framework. *Issues in Interdisciplinary Studies*, 31, 99–122.
- Holton, M., & Riley, M. (2014). Talking on the move: Place-based interviewing with undergraduate students. *Area*, 46, 59–65.
- Hsieh, T. C., Ma, K. H., & Chao, A. (2016). iNEXT: An R package for rarefaction and extrapolation of species diversity (Hill numbers). *Methods in Ecology and Evolution*, 7, 1451–1456.
- Jarosz, A. F., & Wiley, J. (2014). What are the odds? A practical guide to computing and reporting Bayes factors. *The Journal of Problem Solving*, 7, 2–9.
- Jyothi, R. J. (2012). Project proposal of M/s Wipro Ltd. to establish a “sector specific SEZ for IT/ITES” at Sarjapura Village & Hobli, Anekal taluk, Bangalore Rural District. Governor of Karnataka, Commerce & Industries Department.
- Kelly, A. H., & Lezaun, J. (2013). Walking or waiting? Topologies of the breeding ground in malaria control. *Science as Culture*, 22, 86–107.
- King, B. (2010). Political ecologies of health. *Progress in Human Geography*, 34, 38–55.
- King, L., & Tadaki, M. (2018). A framework for understanding the politics of science (Core tenet #2). In R. Lave, C. Biermann, & S. N. Lane (Eds.), *The Palgrave handbook of critical physical geography* (pp. 67–88). Springer International Publishing.
- Kinzig, A. P. (2001). Bridging disciplinary divides to address environmental and intellectual challenges. *Ecosystems*, 4, 709–715.
- Knigge, L., & Cope, M. (2006). Grounded visualization: Integrating the analysis of qualitative and quantitative data through grounded theory and visualization. *Environment and Planning A*, 38, 2021–2037.
- Kwan, M.-P. (2004). Beyond difference: From canonical geography to hybrid geographies. *Annals of the Association of American Geographers*, 94, 756–763.
- LaDeau, S., Leishnam, P., Biehler, D., & Bodner, D. (2013). Higher mosquito production in low-income neighborhoods of Baltimore and Washington, DC: Understanding ecological drivers and mosquito-borne disease risk in temperate cities. *International Journal of Environmental Research and Public Health*, 10, 1505–1526.
- LaDeau, S. L., Allan, B. F., Leishnam, P. T., & Levy, M. Z. (2015). The ecological foundations of transmission potential and vector-borne disease in urban landscapes. *Functional Ecology*, 29, 889–901.
- Lancet Global Health. (2018). Closing the door on parachutes and parasites. *The Lancet Global Health*, 6, e593.

- Lave, R. (2015). Introduction to special issue on critical physical geography. *Progress in Physical Geography: Earth and Environment*, 39, 571–575.
- Lave, R., Wilson, M. W., Barron, E. S., Biermann, C., Carey, M. A., Duvall, C. S., Johnson, L., Lane, K. M., McClintock, N., Munroe, D., Pain, R., Proctor, J., Rhoads, B. L., Robertson, M. M., Rossi, J., Sayre, N. F., Simon, G., Tadaki, M., & Van Dyke, C. (2014). Intervention: Critical physical geography. *The Canadian Geographer*, 58, 1–10.
- Lawhon, M., Ernstson, H., & Silver, J. (2014). Provincializing urban political ecology: Towards a situated UPE through African urbanism. *Antipode*, 46, 497–516.
- Leach, M., & Scoones, I. (2013). The social and political lives of zoonotic disease models: Narratives, science and policy. *Social Science & Medicine*, 88, 10–17.
- Leahey, E. (2016). From sole investigator to team scientist: Trends in the practice and study of research collaboration. *Annual Review of Sociology*, 42, 81–100.
- Lippi, C. A., Stewart-Ibarra, A. M., Muñoz, Á., Borbor-Cordova, M. J., Mejía, R., Rivero, K., Castillo, K., Cárdenas, W. B., & Ryan, S. J. (2018). The social and spatial ecology of dengue presence and burden during an outbreak in Guayaquil, Ecuador, 2012. *International Journal of Environmental Research and Public Health*, 15, 827.
- Loaiza, J. R., Dutari, L. C., Rovira, J. R., Sanjur, O. I., Laporta, G. Z., Pecor, J., Foley, D. H., Eastwood, G., Kramer, L. D., Radtke, M., & Pongsiri, M. (2017). Disturbance and mosquito diversity in the lowland tropical rainforest of Central Panama. *Scientific Reports*, 7, 7248.
- MacMynowski, D. (2007). Pausing at the brink of interdisciplinarity: Power and knowledge at the meeting of social and biophysical science. *Ecology and Society*, 12, 20.
- Makowski, D., Ben-Shachar, M. S., Chen, S. H. A., & Lüdtke, D. (2019). Indices of effect existence and significance in the Bayesian framework. *Frontiers in Psychology*, 10, 2767.
- Mayer, J. D. (2006). Changing vector ecologies: Political geographic perspectives. In S. Knobler, A. Mahmoud, S. Lemon, & L. Pray (Eds.), *The impact of globalization on infectious disease emergence and control: Exploring the consequences and opportunities* (pp. 197–205). National Academies Press (US).
- McLafferty, S. (2010). Placing pandemics: Geographical dimensions of vulnerability and spread. *Eurasian Geography and Economics*, 51, 143–161.
- McNeish, D. (2016). On using Bayesian methods to address small sample problems. *Structural Equation Modeling: A Multidisciplinary Journal*, 23, 750–773.
- Miller, T., Baird, T., Littlefield, C., Kofinas, G., Iii, C., Stuart, F., & Redman, C. (2008). Epistemological pluralism: Reorganizing interdisciplinary research. *Ecology and Society*, 13, 46.
- Misslin, R., Telle, O., Daudé, E., Vaguet, A., & Paul, R. E. (2016). Urban climate versus global climate change-what makes the difference for dengue? *Annals of the New York Academy of Sciences*, 1382, 56–72.
- Mitchell, T. (2002). *Rule of experts: Egypt, techno-politics, modernity*. University of California Press.
- Mulligan, K., Dixon, J., Sinn, C.-L. J., & Elliott, S. J. (2015). Is dengue a disease of poverty? A systematic review. *Pathogens and Global Health*, 109, 10–18.
- Murdock, C. C., Evans, M. V., McClanahan, T. D., Miazgowiec, K. L., & Tesla, B. (2017). Fine-scale variation in microclimate across an urban landscape shapes variation in mosquito population dynamics and the potential of *Aedes albopictus* to transmit arboviral disease. *PLoS Neglected Tropical Diseases*, 11, e0005640.
- Nading, A. M. (2014). *Mosquito trails: Ecology, health, and the politics of entanglement*. University of California Press.
- Nagendra, H., Unnikrishnan, H., & Sen, S. (2013). Villages in the city: Spatial and temporal heterogeneity in rurality and urbanity in Bangalore, India. *Land*, 3, 1–18.
- NVBDCP. (2020). *Guidelines on mosquito and other vector control response*. Ministry of Health and Family Welfare, Government of India, Delhi.
- O'Rourke, M., Crowley, S., Laursen, B., Robinson, B., & Vasko, S. E. (2019). Disciplinary diversity in teams: Integrative approaches from unidisciplinarity to transdisciplinarity. In K. L. Hall, A. L. Vogel, & R. T. Croyle (Eds.), *Strategies for team science success: Handbook of evidence-based principles for cross-disciplinary science and practical lessons learned from health researchers* (pp. 21–46). Springer International Publishing.
- Parham, P. E., Waldock, J., Christophides, G. K., Hemming, D., Agosto, F., Evans, K. J., Fefferman, N., Gaff, H., Gumel, A., LaDeau, S., Lenhart, S., Mickens, R. E., Naumova, E. N., Ostfeld, R. S., Ready, P. D., Thomas, M. B., Velasco-Hernandez, J., & Michael, E. (2015). Climate, environmental and socio-economic change: Weighing up the balance in vector-borne disease transmission. *Philosophical Transactions of the Royal Society B: Biological Sciences*, 370, 20130551.
- R Core Team. (2018). *R: A language and environment for statistical computing*. R Foundation for Statistical Computing.
- Randolph, S. (2006). EDEN—Emerging diseases in a changing European environment: Tick-borne diseases. *International Journal of Medical Microbiology*, 296, 84–86.
- Reegan, A. D., Gandhi, M. R., Sharaja, A. C., Devi, C., & Shanthakumar, S. P. (2020). COVID-19 lockdown: Impact assessment on Aedes larval indices, breeding habitats, effects on vector control programme and prevention of dengue outbreaks. *Heliyon*, 6, e05181.
- Reegan, A. D., Kumar, K. R., & Devanand, L. (2018). Prevalence of dengue vectors in Bengaluru city, India: An entomological analysis. *International Journal of Mosquito Research*, 5, 101–105.
- Reidpath, D. D., Allotey, P., & Pokhrel, S. (2011). Social sciences research in neglected tropical diseases 2: A bibliographic analysis. *Health Research Policy and Systems*, 9, 1.
- Repko, A. F. (2012). *Interdisciplinary research: Process and theory*. SAGE Publications.
- Rochlin, I., Faraji, A., Ninivaggi, D. V., Barker, C. M., & Kilpatrick, A. M. (2016). Anthropogenic impacts on mosquito populations in North America over the past century. *Nature Communications*, 7, 13604.
- Romeo-Aznar, V., Paul, R., Telle, O., & Pascual, M. (2018). Mosquito-borne transmission in urban landscapes: The missing link between vector abundance and human density. *Proceedings of the Royal Society B: Biological Sciences*, 285, 20180826.
- Rose, N. H., Sylla, M., Badolo, A., Lutomiah, J., Ayala, D., Aribodor, O. B., Ibe, N., Akorli, J., Otoo, S., Mutebi, J.-P., Kriete, A. L., Ewing, E. G., Sang, R., Gloria-Soria, A., Powell, J. R., Baker, R. E., White, B. J., Crawford, J. E., & McBride, C. S. (2020). Climate and urbanization drive mosquito preference for humans. *Current Biology*, 30, 1–10.
- Sabesan, S., Raju, K. H. K., Subramanian, S., Srivastava, P. K., & Jambulingam, P. (2013). Lymphatic filariasis transmission risk map of India, based on a geo-environmental risk model. *Vector Borne and Zoonotic Diseases*, 13, 657–665.
- Santos-Vega, M., Bouma, M. J., Kohli, V., & Pascual, M. (2016). Population density, climate variables and poverty synergistically structure spatial risk in urban malaria in India. *PLoS Neglected Tropical Diseases*, 10, e0005155.
- Schmidt, W.-P., Suzuki, M., Dinh Thiem, V., White, R. G., Tsuzuki, A., Yoshida, L.-M., Yanai, H., Haque, U., Huu Tho, L., Anh, D. D., & Ariyoshi, K. (2011). Population density, water supply, and the risk of dengue fever in Vietnam: Cohort study and spatial analysis. *PLoS Medicine*, 8, e1001082-10.
- Silverman, D. (2003). Analyzing talk and text. In N. K. Denzin (Ed.), *Collecting and interpreting qualitative materials* (2nd ed., pp. 340–362). SAGE Publications.
- Sriwichai, P., Karl, S., Samung, Y., Sumruayphol, S., Kiattibutr, K., Payakkapol, A., Mueller, I., Yan, G., Cui, L., & Sattabongkot, J. (2015). Evaluation of CDC light traps for mosquito surveillance in a malaria endemic area on the Thai-Myanmar border. *Parasites & Vectors*, 8, 636.
- Stewart-Ibarra, A. M., Ryan, S. J., Beltrán, E., Mejía, R., Silva, M., & Muñoz, Á. (2013). Dengue vector dynamics (*Aedes aegypti*) influenced by

- climate and social factors in Ecuador: Implications for targeted control. *PLoS ONE*, 8, e78263.
- Stone, C. M., Schwab, S. R., Fonseca, D. M., & Fefferman, N. H. (2019). Contrasting the value of targeted versus area-wide mosquito control scenarios to limit arbovirus transmission with human mobility patterns based on different tropical urban population centers. *PLoS Neglected Tropical Diseases*, 13, e0007479.
- Stratford, E., & Bradshaw, M. (2016). Qualitative research design and rigour. In I. Hay (Ed.), *Qualitative research methods in human geography* (4th ed., pp. 69–80). Oxford University Press.
- Subramanian, S. V., Mavalankar, D., Kulkarni, S. P., Nussbaum, S., & Weigelt, M. (2014). *Metabolized-water breeding diseases in urban India: Socio-spatiality of water problems and health burden in Ahmedabad*. ZEF working paper series 130.
- Townroe, S., & Callaghan, A. (2014). British container breeding mosquitoes: The impact of urbanisation and climate change on community composition and phenology. *PLoS ONE*, 9, e95325–e95327.
- Truelove, Y. (2011). (re-)conceptualizing water inequality in Delhi, India through a feminist political ecology framework. *Geoforum*, 42, 143–152.
- Tyagi, B. K., Munirathinam, A., & Venkatesh, A. (2014). A catalogue of Indian mosquitoes. *International Journal of Mosquito Research*, 2, 50–97.
- Verma, S., Chatterjee, A., & Mandal, N. R. (2017). Analysing urban sprawl and shifting of urban growth Centre of Bengaluru City, India using Shannon's entropy method. *Journal of Settlements and Spatial Planning*, 8, 89–98.
- von Hedemann, N., Butterworth, M. K., Robbins, P., Landau, K., & Morin, C. W. (2015). Visualizations of mosquito risk: A political ecology approach to understanding the territorialization of hazard control. *Landscape and Urban Planning*, 142, 159–169.
- Wasserstein, R. L., Schirm, A. L., & Lazar, N. A. (2019). Moving to a world beyond 'p < 0.05'. *The American Statistician*, 73, 1–19.
- Watts, H. G., & Bohle, M. K. (1993). The space of vulnerability: The causal structure of hunger and famine. *Progress in Human Geography*, 17, 43–67.
- Weaver, S. C., & Reisen, W. K. (2010). Present and future arboviral threats. *Antiviral Research*, 85, 328–345.
- Wilke, A. B. B., Chase, C., Vasquez, C., Carvajal, A., Medina, J., Petrie, W. D., & Beier, J. C. (2019). Urbanization creates diverse aquatic habitats for immature mosquitoes in urban areas. *Scientific Reports*, 9, 15335.
- Wimberly, M. C., Davis, J. K., Evans, M. V., Hess, A., Newberry, P. M., Solano-Asamoah, N., & Murdock, C. C. (2020). Land cover affects microclimate and temperature suitability for arbovirus transmission in an urban landscape. *PLoS Neglected Tropical Diseases*, 14, e0008614.
- World Health Organization. (2014). *A global brief on vector-borne diseases*. World Health Organization.
- Yasmeen, A. (2019). Dengue cases highest in Gujarat and Karnataka. *The Hindu*. Bengaluru, December 15.

SUPPORTING INFORMATION

Additional supporting information may be found in the online version of the article at the publisher's website.

How to cite this article: Evans, M. V., Bhatnagar, S., Drake, J. M., Murdock, C. C., & Mukherjee, S. (2022). Socio-ecological dynamics in urban systems: An integrative approach to mosquito-borne disease in Bengaluru, India. *People and Nature*, 00, 1–14. <https://doi.org/10.1002/pan3.10311>