



**HAL**  
open science

## On the Use of Quality Metrics to Characterize Structured Light-based Point Cloud Acquisitions

Tingcheng Li, Ruding Lou, Arnaud Polette, Zilong Shao, Dominique Nozais,  
Jean-Philippe Pernot

► **To cite this version:**

Tingcheng Li, Ruding Lou, Arnaud Polette, Zilong Shao, Dominique Nozais, et al.. On the Use of Quality Metrics to Characterize Structured Light-based Point Cloud Acquisitions. Conference on the applications of Computer-Aided Design, 2022, Beijing, China. 10.14733/cadconfp.2022.344-349 . hal-03953809

**HAL Id: hal-03953809**

**<https://hal.science/hal-03953809v1>**

Submitted on 24 Jan 2023

**HAL** is a multi-disciplinary open access archive for the deposit and dissemination of scientific research documents, whether they are published or not. The documents may come from teaching and research institutions in France or abroad, or from public or private research centers.

L'archive ouverte pluridisciplinaire **HAL**, est destinée au dépôt et à la diffusion de documents scientifiques de niveau recherche, publiés ou non, émanant des établissements d'enseignement et de recherche français ou étrangers, des laboratoires publics ou privés.

Title:

**On the use of quality metrics to characterize structured light-based point cloud acquisitions**

Authors:

Tingcheng LI, tingcheng.li@ensam.eu, Arts et Metiers Institute of Technology, LISPEN

Ruding LOU, ruding.lou@ensam.eu, Arts et Metiers Institute of Technology, LISPEN

Arnaud POLETTE, arnaud.polette@ensam.eu, Arts et Metiers Institute of Technology, LISPEN

Zilong SHAO, zilong.shao@i-mc.fr, Innovative - Manufacturing and Control, I-MC

Dominique NOZAIS, dominique.nozais@i-mc.fr, Innovative - Manufacturing and Control, I-MC

Jean-Philippe PERNOT, jean-philippe.pernot@ensam.eu, Arts et Metiers Institute of Technology, LISPEN

Keywords:

Structured-light scanning, Point cloud, Quality assessment, Quality metrics

DOI: 10.14733/cadconfP.2022.xxx-yyy

Introduction:

Accurately transferring the real world to the virtual one through reverse engineering is of utmost importance in Industry 4.0 applications. Indeed, acquiring good quality 3D representations of existing physical objects or systems has become mainstream to maintain the coherence between a real object and its digital twin. Compared with traditional contact measurement, contact-less scanning is undoubtedly a fast and direct acquisition technology. However, for a given acquisition, finding the right scanning configuration remains a challenging question whose resolution has attracted researchers in recent years. Using heuristics and visibility criteria, some approaches try to automatically plan the positions and path to be followed by a robot when scanning an object being manufactured [1]. Similarly, Joe Eastwood et al. use a genetic algorithm and a convolutional neural network to optimize the locations of the cameras with the purpose that maximize surface coverage and measurement quality [2]. However, all those techniques base their reasoning on theoretical models whose real behavior may diverge as compared to real measuring. Thus, being able to take decisions based on the results obtained from real acquisitions is crucial to minimize the deviations between what was planned and what has been obtained by the end. To do so, ad-hoc metrics need to be used to accurately characterize the quality of point clouds that are then used in the next engineering steps (e.g. reconstruction, control, simulation).

The methods for evaluating point cloud (PC) quality can be divided into two types, i.e. subjective and objective. The former mainly evaluates the point cloud from a perceived visual quality for immersive representation of 3D contents [3][4], whereas the latter is more quantitatively based on values. For quantitative metrics for evaluating the quality of PC, some researchers only considered the properties of the PCs, assessing the qualities of the PC from four aspects [5]: noise, density, completeness, and accuracy of the point cloud data. Based on these achievements, some scholars [6] further proposed an indicator for surface accessibility, to characterize how a region on the surface of the workpiece can be reached or not by the scanner. Besides, the coverage rate was proposed to reveal how much the area is scanned. Additionally, the normal angle error was figured out in [4]. However, all those metrics can behave differently depending on the adopted technology: laser scanner, photogrammetry, or structured-light measuring for

---

instance. Catalucci et al. [7] compared the photogrammetry and structured-light measurements on additively manufactured parts and proposed quality indicators of PC that include measurement performance indicators and statistical indicators on the whole part measurement. However, their work focused on whole scans of the part that consist of many point clouds acquired from different scan positions and configurations. Although many criteria have been proposed, it remains to be investigated which are the most accurate and obvious metrics to evaluate the quality of the PC during a structured light-based scan.

#### Main Idea:

This work first summarizes comprehensively the existing metrics for point cloud quality assessment, then it introduces novel calculation strategies, and it studies how those metrics behave on different test cases. The metrics to be studied are listed in Tab. 1.

Type of metrics	Metrics
Inherent features	Number of raw points
	Number of final points
	Efficacy ratio
	Density
Geometric characteristics	Registration error
	Coverage ratio
	Normal error
Metrological metrics	Point-to-triangle dispersion

Table 1: Metrics for evaluating the quality of point clouds.

#### *Inherent Features of Point Clouds*

This type of metrics focuses on the inherent features of the PC. Catalucci et al. [7] validated some of them on different point clouds coming from photogrammetry and structured-light scanner.

The number of final points refers to the remaining points of the raw point cloud after removing background, noise and outliers. When the number of raw points is small, the scanning strategy is considered as not sufficiently efficient. The efficacy ratio is defined as the number of useful points divided by the number of original points.

The density is an indicator that describes the number of points in a region. There are two common forms: number of points per unit area, and number of points per unit volume. In this paper, a new format of density is defined and is based on the linear density and spatial distribution.

#### *Geometric Characteristics of Point Clouds*

The geometric metrics consider the relationships between the acquired point cloud and a nominal geometric model, i.e. a CAD model in the context of this work. They take the registration process and the scan region into consideration.

The registration error characterizes how well the point clouds coming from multiple acquisitions have been properly aligned in a common coordinate system by minimizing the alignment error (ICP) [8].

The coverage describes how much of the part's surface is represented by the final point cloud, established from the points and nominal geometric model. The coverage is computed on results of the point-to-triangle distance. If the distance of a point to the facet of the CAD mesh is less than the threshold, the point is considered to be a corresponding point of the facet. Then, depending on both the resolution of the scanner and number of points associated to each facet, a facet can be identified as covered or not. This helps computing the coverage ratios based either on the covered area, or on the number of covered triangles. Good quality acquisitions minimize this metric.

#### *Metrological characteristics*

Point-to-triangle dispersion is an indicator based on the definition of point-to-triangle distance to reveal the projected distance's distribution of the point to corresponding facet in the normal direction [7].

### Experimentation of quality metrics:

#### *Experiment workbench setup and data processing*

The experimentations have been performed using the structured light-based GOCATOR 3210 by LMI Technologies. To study the way the previously introduced metrics behave on different scan configurations, three different parts have been scanned while changing the acquisition viewpoint on a rotating table (acquisition angles of  $0^\circ$ ,  $10^\circ$ ,  $20^\circ$  and  $40^\circ$ ). In this extended abstract, only the results on the so-called pocket workpiece are discussed (Fig. 1).

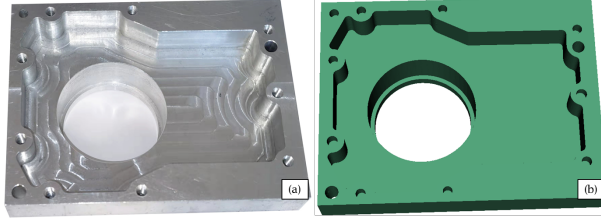


Fig. 1: The pocket workpiece (a) and the nominal CAD model (b)

Data processing includes the removal of the background related to the surrounding environment near the workpiece, removal of the outliers and isolated points and registration between the point cloud and CAD model. In this paper, the background was deleted manually first. Then the registration was done by the algorithm point-to-plane registration. Meanwhile, outliers were deleted. Finally isolated points were deleted by density analysis.

Position	Num of raw PC	Num of final PC	Efficacy ratio
$0^\circ$	1439322	1389531	96.54%
$10^\circ$	460229	444295	96.54%
$20^\circ$	1155815	1114418	96.42%
$40^\circ$	1434403	1388178	96.78%

Table 2: Efficacy ratio for the pocket's scans

#### *Discussion about inherent features*

First, metrics related to the inherent features are analyzed. The results of the **number of raw and final points**, and the **efficacy ratio** of the four acquisitions on the pocket workpiece are listed in Tab. 2. Besides, the **densities** of the four scans are shown in Fig. 2. Even though the density distribution of the acquisition at position  $20^\circ$  is different from the others with low mean density, the values do not vary significantly and the efficacy ratio has little change. Thus, those metrics are not able to finely capture differences between acquisitions and would therefore be less interesting for optimizing scan configurations.

#### *Discussion about geometric characteristics*

Second, metrics related to the geometric characteristics of point clouds are analyzed.

All these indicators are related to the CAD model of the pocket. Thus, the CAD model is meshed using MeshLab, with an edge size 0.5 mm. For the four positions's acquisitions, the **registration errors** vary from 0.074mm to 0.075mm. Here again, it can be noticed that those values do not vary and that therefore such a metric can hardly be used as an objective function to be minimized. The coverage of each of the 4 scans are then shown in Fig. 3 where coverage status of each facet of the mesh is related to the number of points in the PC corresponding to the facet with 3 type: (a) covered (green, the number is over the threshold); (b) uncovered (red, the number is less than the threshold); (c) zero (grey, the number

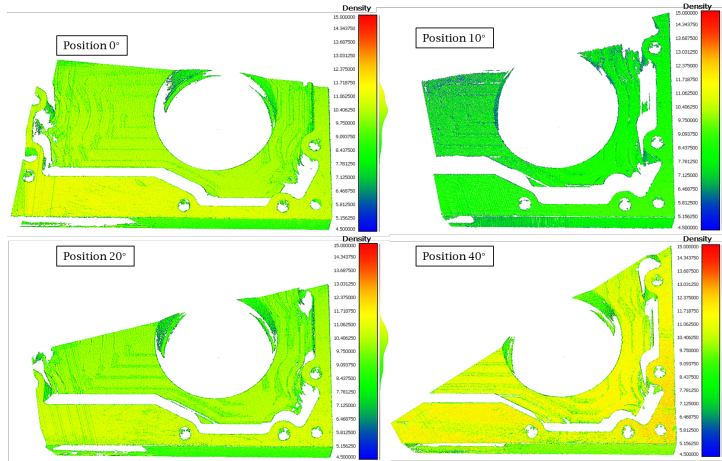


Fig. 2: Density analysis of four acquired point clouds of the pocket workpiece

is 0), and detailed values are summarized in Tab. 3. For the **coverage ratio**, a new indicator is proposed as Eqn. 2.1 where  $N_C$ ,  $N_I$ ,  $N_{uc}$  are respectively the number of covered, ideal covered and uncovered triangles. This indicator considers both the coverage ratio and the ratio between the covered and the uncovered. The bigger it is the better it is. Actually, it can be seen as the signal-to-noise ratio when the covered triangles are treated as noise.

$$Score = e^{N_C/N_I} \ln(N_C/N_{uc}) \quad (2.1)$$

Position	Num of ideal visible facets( $N_I$ )	Num of covered facets( $N_C$ )	Num of uncovered facets( $N_{uc}$ )	Coverage Ratio	Score
0°	142322	66345	8234	46.62%	3.33
10°	109040	40522	12449	37.16%	1.71
20°	123572	55357	7539	44.80%	3.12
40°	116461	50221	5210	43.12%	3.49

Table 3: Coverage ratio and score of 4 scans of the pocket workpiece

From the results, it is obvious that the PC at position 20° has low score on coverage and it is consistent with the fact that this PC has a higher percentage of uncovered area than the other PCs. Thus, the indicator can capture differences between scan configurations, and could therefore be used as a metric to be maximized when looking for optimal scan configuration/position.

Concerning the **normal error** the experimentation results show that this metric is not sensitive enough to be used to optimize scan configuration.

#### *Discussion about metrological features*

Finally, the results on the **dispersion** distribution of the point clouds show very similar results that, again, do not allow for a good comparison of scan configurations.

#### Conclusions:

In this paper, several metrics to reveal the quality of point clouds are studied to identify the ones that could be used for optimizing acquisition positions to perform automatic scan. The study reveals that the indicators number of points, number of covered/uncovered triangles vary greatly, and may be affected

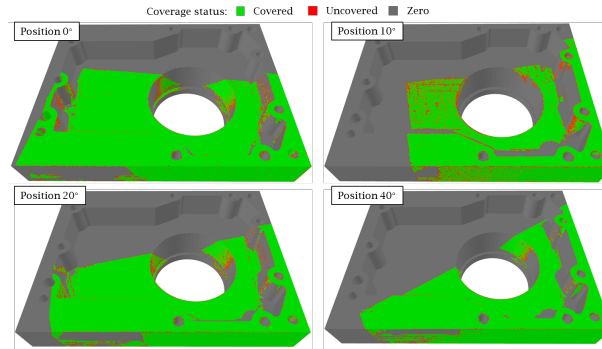


Fig. 3: Coverage of scans for different positions of the GOCATOR 3210.

by external factors (such as the location and configurations of the device). Other indicators such as the efficacy ratio, registration error, normal error and metrological characteristics keep stable and are therefore not interesting to get a good understanding of the pertinence of some acquisition positions. However, the indicators coverage ratio and score have significant changes and can be of interest to assess the quality of the measurements.

#### Acknowledgements:

This work was supported by the China Scholarship Council (No. 202006830012) and the Innovative - Manufacturing and Control (I-MC) company.

#### References:

- [1] Peuzin-Jubert, M.; Polette, A.; Nozais, D.; Mari, J. L.; Pernot, J. P.: Survey on the View Planning Problem for Reverse Engineering and Automated Control Applications, *Computer-Aided Design*, 141, 2021, 103094. <https://doi.org/10.1016/j.cad.2021.103094>
- [2] Eastwood, J.; Zhang, H.; Isa, M.; Sims-Waterhouse, D. ; Piano, S.: Smart photogram-metry for three-dimensional shape measurement, *Optics and Photonics for Advanced Dimensional Metrology*, 11352, 2020, 113520A. <https://doi.org/10.1117/12.2556462>
- [3] Zhang, J.; Huang, W.; Zhu, X.; Hwang, J. N.: A subjective quality evaluation for 3D point cloud models, *ICALIP 2014*, 2014, 827-831. <https://doi.org/10.1109/ICALIP.2014.7009910>
- [4] Alexiou, E.; Ebrahimi, T.: On subjective and objective quality evaluation of point cloud geometry, 9th QoMEX, IEEE, 2017, 1-3. <https://doi.org/10.1109/QoMEX.2017.7965681>
- [5] Lartigue, C.; Contri, A.; Bourdet, P.: Digitised point quality in relation with point exploitation, *Measurement*, 32(3), 2002, 193-203. [https://doi.org/10.1016/S0263-2241\(02\)00008-8](https://doi.org/10.1016/S0263-2241(02)00008-8)
- [6] Zuquete-Guarato, A.; Mehdi-Souzani, C.; Quinsat, Y.; Lartigue, C.; Sabri, L.: Towards a new concept of in-line crankshaft balancing by contact less measurement: process for selecting the best digitizing system, *Foundations and Trends in Robotics*, 44878, 2015, 17-25. <https://doi.org/10.1115/ESDA2012>
- [7] Catalucci, S.; Senin, N.; Ziegelmeier, S.; Piano, S.; Leach, R.: Measurement of complex freeform additively manufactured parts by structured light and photogrammetry, *Measurement*, 164, 2020, 108081. <https://doi.org/10.1016/j.measurement.2020.108081>
- [8] Low K L.: Linear least-squares optimization for point-to-plane ICP surface registration, Chapel Hill, University of North Carolina 4.10 (2004), 1-3.