



**HAL**  
open science

## **Effect of land use change on carbon stocks in an agricultural region of southern Benin**

Issiakou Alladé Houssoukpèvi, Gueric Le Maire, Hervé Nonwègnon Sayimi Aholoukpè, Démayi Jorès Mauryo Fassinou, Guillaume Lucien Amadji, Lydie Chapuis-lardy, Tiphaine Chevallier

### ► **To cite this version:**

Issiakou Alladé Houssoukpèvi, Gueric Le Maire, Hervé Nonwègnon Sayimi Aholoukpè, Démayi Jorès Mauryo Fassinou, Guillaume Lucien Amadji, et al.. Effect of land use change on carbon stocks in an agricultural region of southern Benin. *Land Degradation and Development*, 2022, 34 (5), pp.1447-1463. <10.1002/ldr.4545>. <hal-03951613>

**HAL Id: hal-03951613**

**<https://hal.science/hal-03951613v1>**

Submitted on 23 Jan 2023

HAL is a multi-disciplinary open access archive for the deposit and dissemination of scientific research documents, whether they are published or not. The documents may come from teaching and research institutions in France or abroad, or from public or private research centers.


L'archive ouverte pluridisciplinaire HAL, est destinée au dépôt et à la diffusion de documents scientifiques de niveau recherche, publiés ou non, émanant des établissements d'enseignement et de recherche français ou étrangers, des laboratoires publics ou privés.



Distributed under a Creative Commons CC BY-NC 4.0 - Attribution - Non-commercial use - International License

## RESEARCH ARTICLE

# Effect of land use change on carbon stocks in an agricultural region of southern Benin

Issiakou Alladé Houssoukpèvi<sup>1,2</sup>  | Gueric le Maire<sup>1,3</sup> |  
 Hervé Nonwègnon Sayimi Aholoukpè<sup>2,4</sup> | Démayi Jorès Mauryo Fassinou<sup>2</sup> |  
 Guillaume Lucien Amadji<sup>2</sup> | Lydie Chapuis-Lardy<sup>1,5</sup> | Tiphaine Chevallier<sup>1</sup>

<sup>1</sup>UMR Eco&Sols, Université de Montpellier, CIRAD, INRA, IRD, Institut Agro, Montpellier, France

<sup>2</sup>UR Ecopédologie; Laboratoire de Sciences du sol; Faculté des Sciences Agronomiques, Université d'Abomey-Calavi, Cotonou, Benin

<sup>3</sup>UMR Eco&Sols, CIRAD, Montpellier, France

<sup>4</sup>Centre de Recherches Agricoles Plantes Pérennes (CRA-PP), Institut National des Recherches Agricoles du Bénin, Pobè, Benin

<sup>5</sup>LMI IESOL, Centre de recherche ISRA-IRD, Dakar, Sénégal

## Correspondence

Issiakou Alladé Houssoukpèvi, UMR Eco&Sols, Université de Montpellier, CIRAD, INRA, IRD, Institut Agro, 34060 Montpellier, France. UR Ecopédologie; Laboratoire de Sciences du sol; Faculté des Sciences Agronomiques, Université d'Abomey-Calavi, BP 526 Cotonou, Benin.  
 Email: [alladeissiak@gmail.com](mailto:alladeissiak@gmail.com)

## Funding information

Département Soutien et Formation, Institut de Recherche pour le Développement; Fondation BNP Paribas

## Abstract

Land use change is one of the most important determinants of carbon storage and dynamics in ecosystems. Areas in the proximity of metropolises undergo land use changes but are poorly studied for their soil and biomass carbon budget, especially in Africa. Close to Benin's economic capital, the Lama Territory located on the Allada Plateau and is subject to high demographic and urbanization pressures. Carbon (C) stocks in the region are likely to be rapidly changing. This research assessed the land use changes and quantified the spatial distribution and variation of C stocks between 2000 and 2018 on the Ferralsols of the study area. Random forest models using spectral bands of LANDSAT images and some spectral indices as predictors were calibrated to classify the land use. C stocks of four C pools (aboveground, belowground biomass, litter, and soil) were mapped with InVEST (integrated valuation of ecosystem services and tradeoffs) model. Land use change occurred in 61% of the Ferralsol area between 2000 and 2018. The surface of forests and crop-plantation associations decreased in benefit of tree plantations, adult palm groves, and built-up areas. With the loss of forest surface and the increasing urbanization, C stocks of the region decreased by  $-218$  Gg C with 4% uncertainty ( $-175$  Gg C in soil pools, and  $-125$  Gg C in aboveground biomass with both 6% uncertainty) between 2000 and 2018. Results highlight: (i) the need for soil C stock accounting to avoid underestimation of C stocks evolution in a rural region; and (ii) the relevance of tree plantations and deforestation control to maintain the C stocks in tropical areas.

## KEYWORDS

carbon pools, land use, Random forest, tropical systems, uncertainty

## 1 | INTRODUCTION

Land use change is the second largest source of global warming, after fossil fuel combustion. (FAO, 2019; IPCC, 2019a). Land use change increases or decreases atmospheric carbon (C) emissions and contributes

significantly to climate regulation. (Scharlemann et al., 2014; Tieszen et al., 2011). For example, urbanization and expansion of agricultural land often lead to deforestation and biomass and soil carbon stock depletion (Olorunfemi et al., 2018; Zhang et al., 2017). On the contrary, reforestation through tree plantations or forest natural regeneration enhance

This is an open access article under the terms of the [Creative Commons Attribution-NonCommercial](https://creativecommons.org/licenses/by-nc/4.0/) License, which permits use, distribution and reproduction in any medium, provided the original work is properly cited and is not used for commercial purposes.

© 2022 The Authors. *Land Degradation & Development* published by John Wiley & Sons Ltd.

terrestrial C stocks (Dibaba et al., 2019; Yirdaw, 2018). In addition to C stocks evolution, the evolution of ecosystem services due to land use change has attracted international attention, as these services affect the economies, environment, and thus the well-being of human societies (Adhikari & Hartemink, 2016). For example, a large majority of the nationally determined contributions (NDCs) presented by countries under the Paris Agreement of the United Nations Framework Convention on Climate Change (UNFCCC) suggest actions in the agriculture and forestry sector to both mitigate and adapt to climate change. Nevertheless, a mere 10% of the Green Climate Fund's budget is used to implement agriculture and forestry projects, often due to a lack of data on greenhouse gas (GHG) emissions or on the evolution of carbon stocks in ecosystems. (Buto et al., 2021). In Benin, the ambition is to reduce GHG emissions by 16% by 2030. The government of Benin strives to protect the vegetation cover, restore degraded land and forest landscapes in the country along with the implementation of an ambitious energy transition policy to reduce pressure on forests and agroforestry parks. The intention is to reduce the deforestation rate by 42% by 2030 (DGEC/MCVDD, 2017). It is, therefore, necessary to characterize and monitor the dynamics of land use changes and to measure their effect on the functioning of various terrestrial ecosystems, particularly regarding the C stocks (Leh et al., 2013; Newbold et al., 2015).

Carbon stock in terrestrial ecosystems includes several pools: soil, dead wood and litter, living above- and belowground biomass (UNFCCC, 2015). The global soil organic carbon (SOC) pool was estimated at more than 2300 Gt C in 0–300 cm soil layers, compared to 650 Gt C stored in vegetation and 840 Gt C in the atmosphere. (FAO, 2019; Lorenz & Lal, 2018). The amount of the SOC stock and its dynamics has an important role in regulating CO<sub>2</sub> emissions to the atmosphere (Minasny et al., 2017). Plants fix CO<sub>2</sub> from the atmosphere through photosynthesis and a part of this carbon is further incorporated into the soil as litter residues or root exudates. The carbon remains in the soil within the soil organic matter and SOC during contrasted periods of time. As SOC represents a major but dynamic reservoir of terrestrial C, C sequestration in soils contributes to climate regulation. The SOC stock is affected by soil type, soil-climatic conditions, and land use and management (Fujisaki et al., 2018). Similarly, the evolution of C stock in living or dead biomass is mainly conditioned by climate and land use (Menezes et al., 2021). Thus, the C stock of the different terrestrial C pools may either decrease or increase as a result of a change in land use such as deforestation (e.g., Grinand et al., 2017; Guo & Gifford, 2002) or afforestation, or any change in agricultural practices (Corbeels et al., 2019; Fujisaki et al., 2018). In subSaharan Africa, land use change and land use intensification, including agricultural expansion and overexploitation of forest resources, led to degradation of forest landscape (FAO, 2016) and depletion of C stocks in different pools (Ciais et al., 2011).

Despite global attention on climate change and the rise of initiatives such as Reducing Emissions from Deforestation and Forest Degradation (REDD+), knowledge of the evolution of C stocks associated with land use change in all regions is growing but still fragmentary (Grinand et al., 2017; Tao et al., 2015) especially in developing countries. In Southern countries, studies on the dynamics of C stocks at a regional scale are recent and mainly focused on deforestation areas

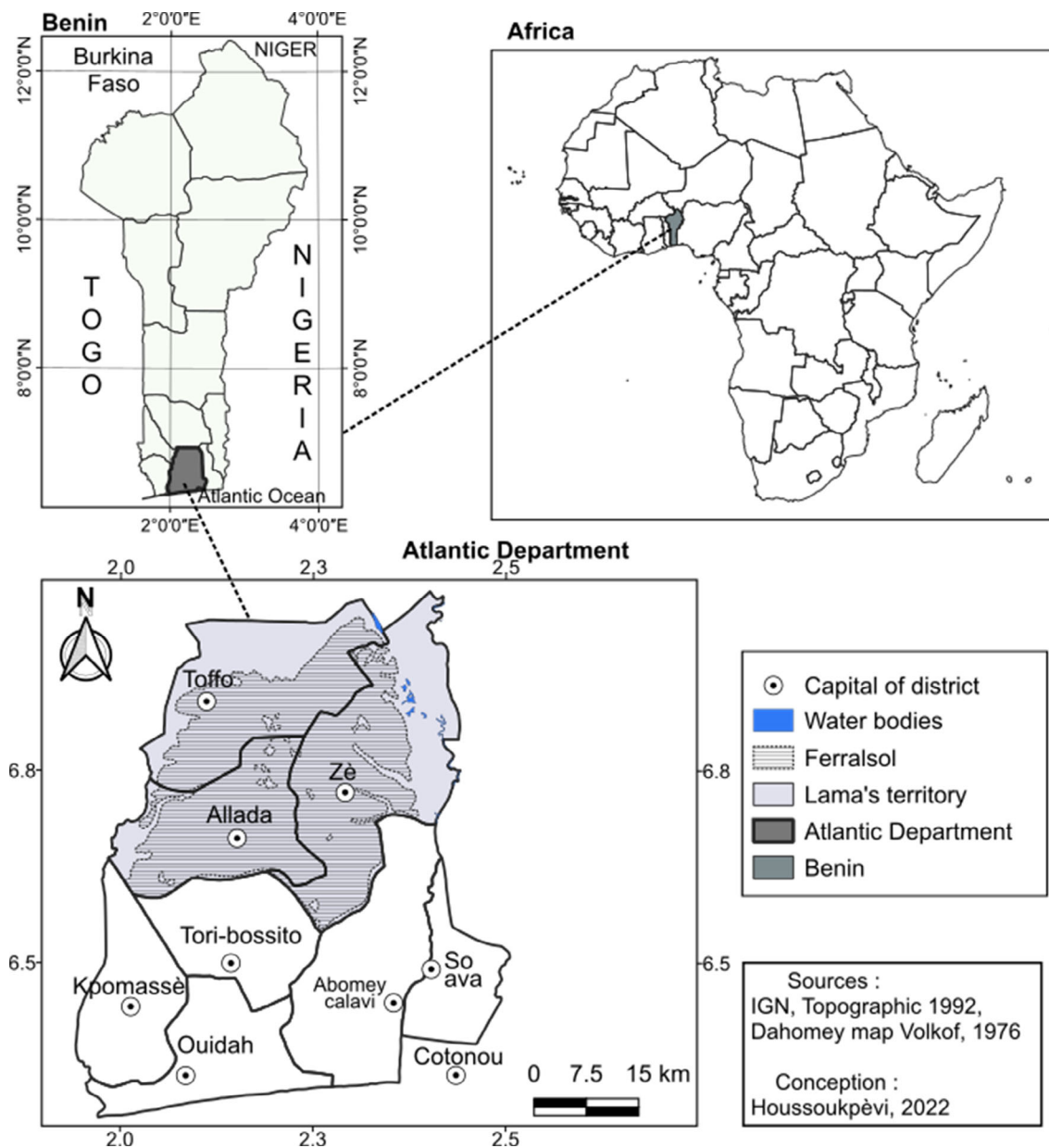
(Babbar et al., 2021; Grinand et al., 2017; Zhang et al., 2017), very few concern agricultural areas (Zhao et al., 2018). However, besides deforestation, land use changes can be highly dynamic in agricultural areas, notably around cities with a high demographic pressure on land. To our knowledge, there is no study on land use and C stock changes in agricultural areas affected by the proximity of an African city such as is the case in the Lama Territory close to Cotonou in Benin.

The Lama Territory located in the Allada Plateau region (214,000 ha) shows a heterogeneous and transforming agricultural landscape (natural forest relics, tree plantations, food crops) mainly developed on Ferralsols. Close to Cotonou with a high demographic pressure, the area experienced urbanization and changes in agricultural activities. The evolution of agricultural and economic activities since several decades led to the development of private tree plantations, oil palm plantations (*Elaeis guineensis*), pineapple cultivation (Aoudji et al., 2014; Brun et al., 2018; Tchibozo, 2020). We hypothesized that these changes in land use have affected large areas and have modified C stocks of the Allada Plateau. We focused the study on the Ferralsols, which are soils with quite homogeneous texture and are the dominant soil type of the Allada Plateau (Houssoukpevi et al., 2022), in order to be able to attribute the eventual C stock variations to the land use change and not to the soil type. Our study was built on existing estimates of terrestrial C pools, that is, living biomasses (aboveground and belowground), litter + woody necromass and soil (Ferralsols), measured in representative natural and agricultural systems of the area (Houssoukpevi et al., 2022). This previous study took into account the diversity of local vegetation cover, age, and farming practices of the respective land uses to calculate carbon stocks and their variability. This study focused on the characterization of the spatial evolution of land use. The main objective of this study is to characterize the spatial evolution of land use over almost two decades on the agricultural Allada Plateau and to estimate the consequences of these evolutions on global C stocks in all compartments, soil, biomass, and necromass. The specific goals of the study were (i) to describe the evolution of land use on the Allada Plateau between 2000 and 2018 and (ii) to analyse the consequences of changes in land use on the terrestrial C stocks pools. A special attention has been made on the calculation of the uncertainties associated with the estimates of C stocks.

## 2 | MATERIALS AND METHODS

### 2.1 | Study area

The study area covers the three municipalities of the Lama Territory (Allada, Zè, and Toffo) on the Allada Plateau (6°20'–6°50' N and 2°00' E, 3–175 m altitude) in the Atlantic Department of southern Benin (Figure 1). It is located near Cotonou, the capital of Benin, and its agglomeration. This area is classified as a tropical savannah with a dry winter (Aw) according to the Köppen-Geiger climate classification scheme (Rubel & Kottek, 2010). Ferrallitic and ferruginous soils, Vertisols, and Hydromorphic soils are the principal soil types in the area. (CPCS, 1967; Volkoff, 1976). Ferrallitic soils, or Ferralsols in the World Soil Resources Database (IUSS-WRB, 2015) are dominant on the



**FIGURE 1** Location of Benin, the Atlantic Department and the study area [Colour figure can be viewed at [wileyonlinelibrary.com](https://onlinelibrary.wiley.com/doi/10.1002/ldr.4545)]

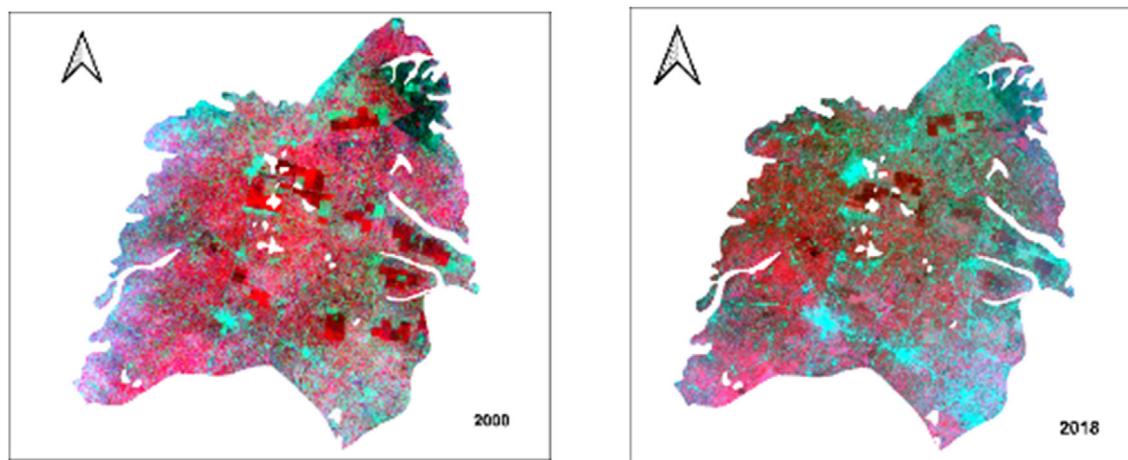
Allada Plateau and cover an area of 106,221 ha, that is, 70% of the area of the three municipalities (Volkoff, 1976). The present study was conducted exclusively on this type of soil (106,221 ha; Figure 1). These soils are generally sandy in texture with about 75% sand in in the 0–30 cm depth (Houssoukpèvi et al., 2022).

## 2.2 | Determination and evolution of the land use on Ferralsols

### 2.2.1 | Satellite image acquisition and processing

Two subscenes of LANDSAT imagery from the years 2000 (Enhanced Thematic Mapper Plus sensor: ETM+) and 2018 (Operational Land

Imager sensor: OLI) were used to map and analyse land cover changes in the study area (Figure 2). Low cloud cover LANDSAT images (Path 190, Rows 055 with a spatial resolution of 30 m) were obtained for the study area from the United States Geological Survey (USGS) archive (Table 1). The images are orthorectified and corrected for atmospheric effects on reflectance (to obtain ‘surface reflectance’). Both 2000 and 2018 images were collected in dry season to minimize variations in vegetation phenology (Clerici et al., 2007). The spectral bands used in this study were blue (441–514 nm for ETM+ and 452–512 for OLI), green (519–601 nm for ETM+ and 533–590 nm for OLI), red (631–692 nm for ETM+ and 636–673 nm for OLI), near infrared (NIR; 772–898 nm for ETM+ and 851–879 nm for OLI), shortwave infrared 1 (SWIR1; 1547–1749 nm for ETM+ and 1566–1651 nm for OLI), and shortwave infrared 2 (SWIR2; 2064–2345 nm



**FIGURE 2** LANDSAT-7 ETM+ (432 false colour composite) and LANDSAT 8-OLI (543 false colour composite) sub-images [Colour figure can be viewed at [wileyonlinelibrary.com](http://wileyonlinelibrary.com)]

**TABLE 1** Characteristics of the LANDSAT images used

Images	Date of acquisition	Cloud cover (%)	Strips used	Spectral indices used
LANDSAT-7 ETM+.	Dec 13, 2000	5.00	Blue Green Red	$NDVI = (NIR - Red) / (NIR + Red)$ $NIRI = (NIR - SWIR1) / (NIR + SWIR1)$
LANDSAT-8 OLI/TIRS	Jan 5, 2018	0.86	NIR SWIR SWIR.2	$NIRI.2 = (NIR - SWIR2) / (NIR + SWIR2)$

for ETM+ and 2107–2294 nm for OLI). We calculated the normalized difference vegetation index (NDVI; Rouse et al., 1974) and the normalized infrared indices (NIRI and NIRI.2; Hardisky et al., 1984) (Table 1). These indices in addition to the spectral bands of the LANDSAT images were used to improve the quality of the image classification (Grinand et al., 2013; Kamusoko, 2019).

## 2.2.2 | Classification of LANDSAT images

The images were classified according to six land use categories: built-up areas (BA), forests (FO), tree plantations (PL), adult palm groves (PA), crop-plantation associations (CP), and croplands (CL) (Table 2). Waterbodies were not considered as the study focused on Ferralsols.

Satellite image classifications are most often performed by combining the remote sensing data with reference data from the ground or from aerial photographs at or near the time of the satellite pass (Benz et al., 2004; Zhou et al., 2009). However, in Benin, such data are not widely available for retrospective analysis of remote sensing data (Kamusoko et al., 2009). For our area, the absence of aerial photographs led us to use very high-resolution images acquired from different satellites gathered on Google Earth as reference data. To classify the 2000 LANDSAT image, 938 points of interest were defined using the Google Earth images of 2005. We used the 2005 google image because the 2000 image was of poor quality. We

**TABLE 2** Description of mapped land use patterns

Land use patterns	General description
Built-up areas (BA)	Commercial and residential buildings, industrial sites, institutional areas, roads, and other man-made structures.
Forests (FO)	Relics of natural forests, sacred forests: consisting of evergreen and deciduous trees.
Tree plantations (PL)	Forestry plantations: monospecific plantations of Teak, Gmelina.
Adult palm groves (PA)	Mature oil palm plantations (>10 years)
Crop-plantation associations (CP)	Annual crop association with trees or in young palm groves (<4 years).
Croplands (CL)	Annual or bi-annual crops (in the area mainly maize, cassava, pineapple), fallow land, sparsely vegetated land; this category also includes bare soil at the time of image acquisition

checked that the selected Google Earth image give the same land cover class spectral signature as the LANDSAT image through visual interpretation of the images. For the classification of the 2018 LANDSAT image, in addition to the 1621 points of interest identified on a 2017 Google Earth image, 100 points of interest were collected in the

field for each land use in December 2019 (Appendix A). The six land use types are clearly distinguishable visually on the Google Earth images. In addition, each measured point is representative of an area of approximately 50 m radius around the point on the Google Earth image. In the end, a minimum of 100 points of interest for the year 2000 and 200 for the year 2018 were considered per land use mode.

The *Random forest* algorithm, that is, a Machine Learning method (Breiman, 2001), has been used for image classification (Grinand et al., 2013; Hounkpatin et al., 2018; Kamusoko, 2019). The *Random forest* algorithm was used because: (i) it is robust in analysing complex and numerous numerical or categorical data; (ii) it is free from normal distribution assumptions; and (iii) it is robust to outliers and noise (Mather & Koch, 2011; Rodriguez-Galiano et al., 2012). In addition, it provides an internal measure of classification accuracy (*out-bag error*).

We calibrated *Random Forest* models using spectral bands (Table 1) and some spectral indices (i.e., NDVI and NIRI) as input variables (predictors). For each of the two classifications (i.e., for 2000 and 2018), 70% of the data were randomly selected for each land use (stratified random sampling) as training data, and the remaining 30% were used as model validation data. The hyperparameters (*mtry*, number of tree) of the *random Forest* model were obtained by a systematic search maximizing the accuracy on the 70% of training points, and by performing five cross-validations repeatedly for five times (Kamusoko, 2019).

### 2.2.3 | Land use change parameters calculation

The images classified at both dates were used to calculate the area of the different land uses. The overall rate of change (Equation 1) and the annual rate of change (Equation 2) are the parameters used to assess the evolution of land use patterns (Puyravaud, 2003).

$$OC = \frac{S2 - S1}{S1} \times 100, \quad (1)$$

Where: OC is the overall rate of change and S1 and S2 are the initial and final areas of land use at the dates studied (2000 and 2018) respectively. Positive values of OC indicate increases in a specific land use while negative values reflect losses in land use (Toyi et al., 2013).

$$r = \frac{1}{t2 - t1} \times \ln\left(\frac{S2}{S1}\right), \quad (2)$$

Where: *r* is the annual rate of change, *t*<sub>1</sub> and *t*<sub>2</sub> are the initial (2000) and final (2018) dates of the images used to determine the occupancy patterns.

## 2.3 | Mapping the carbon stocks

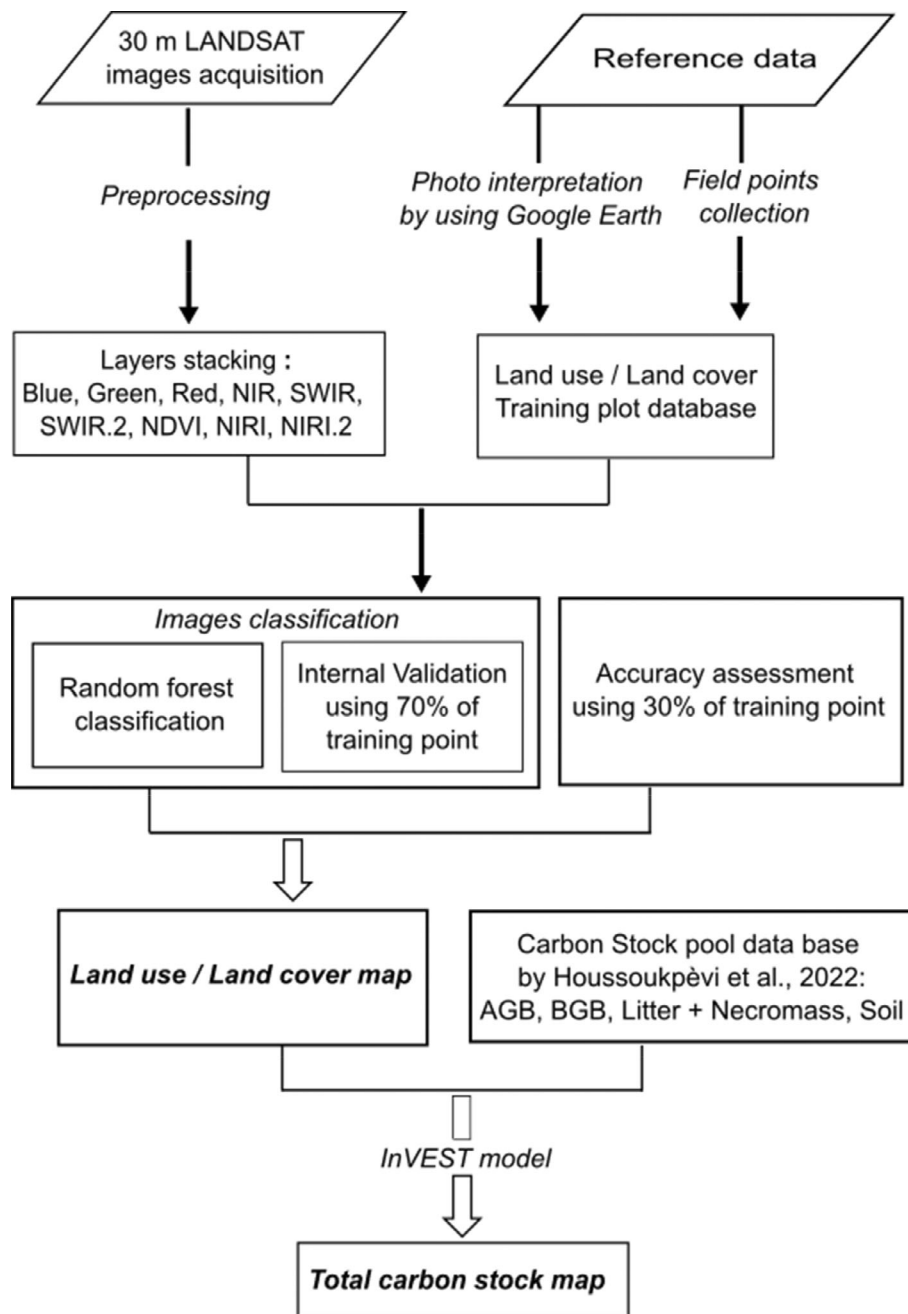
Mapping the carbon stocks used the classification of Landsat images (see Section 2.2) and the C stocks measured in each land uses (Figure 3). The C stocks in the four pools of each land use, except built-up, that is, urbanized areas, were measured on representative fields in a previous study in

2019 (details in Houssoukpevi et al., 2022). Briefly, to ensure that the C stocks were representative, the C stocks were measured in classified and sacred forests, in state tree plantations and smallholder tree plantations of different ages and different tree species, in palm tree plantations with different previous history, and in annual or bi annual croplands (Pineapple, tomato, maize, and cassava). In total, 19 plots on Ferralsols were sampled. Soil and litter replicates and tree replicates were performed when estimating biomass and soil C stocks. The C stocks were mapped with a spatial resolution of 30 m using the module named carbon of the InVEST 3.9.0 software (integrated valuation of environmental services and tradeoffs) developed by the Natural Capital Project team (Bagstad et al., 2013; Daily et al., 2009). InVEST is a geospatial tool used to assess the impacts of land use change on ecosystem services (Goldstein et al., 2012; Qiu & Turner, 2013). Using the carbon module of InVEST implies a strong assumption: the estimation of C stocks per land use and per pool does not vary across time if the land use does not change (Sharp et al., 2020). The input parameters of the carbon model in InVEST were the land use maps of the years 2000 and 2018 and, for each land use, the C stock data (Mg ha<sup>-1</sup>) of the four pools: living aboveground biomass, belowground biomass, litter and deadwood, and SOC (depth 0–30 cm) (Table 3). The details of the quantification of the C stocks for each pool are in Houssoukpevi et al., (Houssoukpevi et al., 2022). Briefly, these stocks were estimated according to UNFCCC (2013) guidelines. Aboveground biomass, belowground biomass, and litter (dead wood, grasses, and plant debris) were estimated in 0.25 ha square plots distributed in four forests, four tree plantations, and three adult and four young palm groves. The number of 0.25 ha square plot replicate per forest and plantations (from 10 to 35) depended of the size of the forest or the plantation. The carbon stocks in aboveground and belowground biomass were quantified after estimating the biomass stock based on allometric models developed for the species in the study area. These models consider the height of tree and diameter of the trees measured at 1.30 m from the floor (Goussanou et al., 2016; Guendehou et al., 2012; Kora et al., 2018). Litter and soil samples were collected in 1 m<sup>2</sup> quadrat along the diagonal of each 0.25 ha square plot in forests and tree plantations. In four different croplands, the C stocks were estimated in litter and soil (0–30 cm) in five plots. The C stocks of aboveground and belowground biomass were considered null because the biomass in croplands is either burnt or used for livestock feed. The SOC stocks were calculated based on IPCC procedures (Gelaw et al., 2014; IPCC, 2019b). This calculation took into account SOC content (g C kg<sup>-1</sup> soil); soil bulk density (g cm<sup>-3</sup>) and soil layer thickness (cm). We considered that the C stock of built-up areas are null. The Carbon model of InVEST produced a map of C stocks for each of the four pools, in each pixel of the whole study area. The regional C stock in the different pools by land use is obtained by multiplying the C stock of land use by its surface area.

## 2.4 | Statistical analysis

### 2.4.1 | Evaluation of LANDSAT images classification accuracy

A confusion matrix of the validation data (30% of the selected independent points) was used to summarize the classification results for



**FIGURE 3** Flowchart of the steps followed to obtain the maps

**TABLE 3** Carbon stock ( $\text{Mg C ha}^{-1}$ , mean  $\pm$  standard deviation) of the four pools in the land use (excluding BA) (from Houssoukpèvi et al., 2022)

Land cover	Aboveground biomass	Belowground biomass	Litter+ Necromass	Soil (0–30 cm)	Total
Forests (FO)	225 $\pm$ 43.53	54 $\pm$ 11	28 $\pm$ 5.1	43 $\pm$ 1.9	350 $\pm$ 45
Tree plantations (PL)	113 $\pm$ 26.71	27 $\pm$ 6.41	16 $\pm$ 3.3	31 $\pm$ 1.2	187 $\pm$ 28
Adult palm groves (PA)	63 $\pm$ 4.43	15 $\pm$ 1.06	11 $\pm$ 0.8	23 $\pm$ 1.1	112 $\pm$ 5
Crop-plantation associations (CP)	39 $\pm$ 0.87	9 $\pm$ 0.21	2 $\pm$ 0.2	23 $\pm$ 1.3	73 $\pm$ 2
Croplands (CL)	0	0	1 $\pm$ 0.2	31 $\pm$ 2.8	32 $\pm$ 3

each of the two classifications. From this confusion matrix, the user accuracy, producer accuracy, and overall accuracy of the classification were calculated. In addition, a non-parametric kappa test was also

performed to measure the accuracy of the classification. Kappa value usually ranges between 0% and 100%. The classification is considered satisfactory from 70% to 100% (Lillesand et al., 2015). The confusion

matrix was also used to calculate the errors related to the estimated areas (Equation 3) of the different land use based on a 95% confidence interval (Olofsson et al., 2014).

$$S = 1.96 \times A_i \times \sqrt{\sum W_i^2 \times \frac{n_{ik} \left(1 - \frac{n_{ik}}{n_i}\right)}{n_i - 1}}, \quad (3)$$

Where:  $S$  is the error associated to the estimation of the area with 95% of confidence,  $A_i$  is the area of the land class  $i$ ,  $W_i$  the proportion area of classification for the land class  $i$ ,  $n_{ik}$  the number of samples at cell  $(i, k)$  of the confusion matrix, and  $n_i$  the sum of the samples classified as land class  $i$  in the confusion matrix.

The classification and processing of the images were done using the open-source software R (version 3.6.3; package *caret* and *RandomForest*) and Quantum GIS (QGIS 3.18.2). The transition matrix was obtained using the MOLUSCE (modules for land use change evaluation) plugin of QGIS (Asia Air Survey & Next GIS, 2012). This matrix was used to analyse the changes in land use between 2000 and 2018.

## 2.4.2 | Evaluation of the C stocks uncertainty

For each land use, the uncertainty in the C stocks was obtained by combining the standard deviations around the mean of the measured C stocks (Houssoukpèvi et al., 2022) and the errors related to the estimation of the land use area (Olofsson et al., 2014). These combinations were realized using the error propagation (IPCC Tier 1) as advised in international guidelines (GOFC-GOLD, 2016; IPCC, 2006). This method is based on two equations: one for addition and subtraction used to add the different C pools and compare C stocks between two dates (Equation 4), and one for multiplication used to estimate the C stock of a specific land use (Equation 5).

$$U_{\text{total}} = \frac{\sqrt{(U_1 * x_1)^2 + (U_2 * x_2)^2 + \dots + (U_n * x_n)^2}}{|x_1 + x_2 + \dots + x_n|}, \quad (4)$$

Where:  $x_i$  referred to the value of the variables (e.g., the C stocks of one specific C pool),  $U_i$  referred to percentage uncertainty associated with each of the variables  $x_i$  (i.e., standard deviation/mean) and  $U_{\text{total}}$  referred to the percentage uncertainty associated with the sum of the variables  $x_i$ .

$$U_{\text{total}} = \sqrt{U_1^2 + U_2^2 + \dots + U_n^2}, \quad (5)$$

Where:  $U_{\text{total}}$  is the percentage uncertainty associated with the product of the variables and  $U_i$  is the percentage uncertainty associated with each of the variable (i.e., C stocks per area of a specific land use multiplied by its corresponding surface area).

Then the accuracy of the C stock maps and the calculated C stock values per land use or per C pools for the whole studied area (Table 5)

depend on the accuracy of the land cover maps (assessed in Section 2.2.3, Table 4), and the accuracy of the measured C stock data (Table 3). No external validation or cross-validation to validate the C stock maps were performed, because we assumed that the accuracy of the C stock map mostly depend on the accuracy of the land cover maps, which is already evaluated by cross-validation.

## 3 | RESULTS

### 3.1 | Ferralsols land use/land cover classification in 2000 and 2018

The land cover maps generated from the supervised classification of satellite images for the study years 2000 and 2018 are presented in Figure 4. The error matrix shows an overall accuracy and  $Kappa$  statistics of 82% and 78% (Appendix B) for 2000 and 87% and 84% for 2018 (Appendix C) respectively. All values were above the minimum requirement (70%) for a satisfactory classification. However, in the classification of the 2000 image, the land use crop-plantation associations has low producer and user accuracies (Appendix B). Some confusions in pixel allocation were possible between crop-plantation associations and other land uses. In the classification of the 2018 image, these confusions are mainly identified between forests and adult palm groves land uses (Appendix C). The lowest producer accuracy was obtained for tree plantations and the lowest user accuracy for the forests land uses.

The mapping of land use in 2000 showed that croplands, crop-plantation associations, and adult palm groves were the dominant land uses of the Ferralsols on the Allada Plateau (Table 4). These land uses cover  $48,774 \pm 1394$  ha (46% of the 106,221 ha apprehended),  $36,234 \pm 1078$  ha (34%) and  $8149 \pm 254$  ha (8%) respectively. In 2018, the dominant land use was still croplands, with a development of the areas occupied by adult palm groves, tree plantations, and built-up areas covering  $50,703 \pm 1018$  ha (48%),  $19,106 \pm 389$  ha (18%),  $12,511 \pm 220$  ha (12%), and  $12,395 \pm 131$  ha (12%) respectively (Table 4). It should be noted that the uncertainty in the estimated areas of land use varied from 1% to 3% for the year 2000 image and from 1% to 2% for the year 2018 image (Table 4).

### 3.2 | Land use dynamics (2000–2018)

Examination of land use changes over the period 2000–2018 revealed a significant increase in built-up areas, adult palm groves, and tree plantations, with a consequent decrease in forests and crop-plantation associations (Table 4). In general, all land uses except croplands have experienced a significant overall rate of change. Some land uses have experienced a significant increase in area. This is especially the case for tree plantations with an increase of +115% (+6692 ha), adult palm groves by +134% (+10,957 ha) and built-up areas by +207% (+8356 ha). On the contrary, crop-plantation associations and forests decreased in area, respectively,  $-70\%$  ( $-25,340$  ha) and  $-81\%$  ( $-2595$  ha). However, the annual rate of change was low (Table 4).

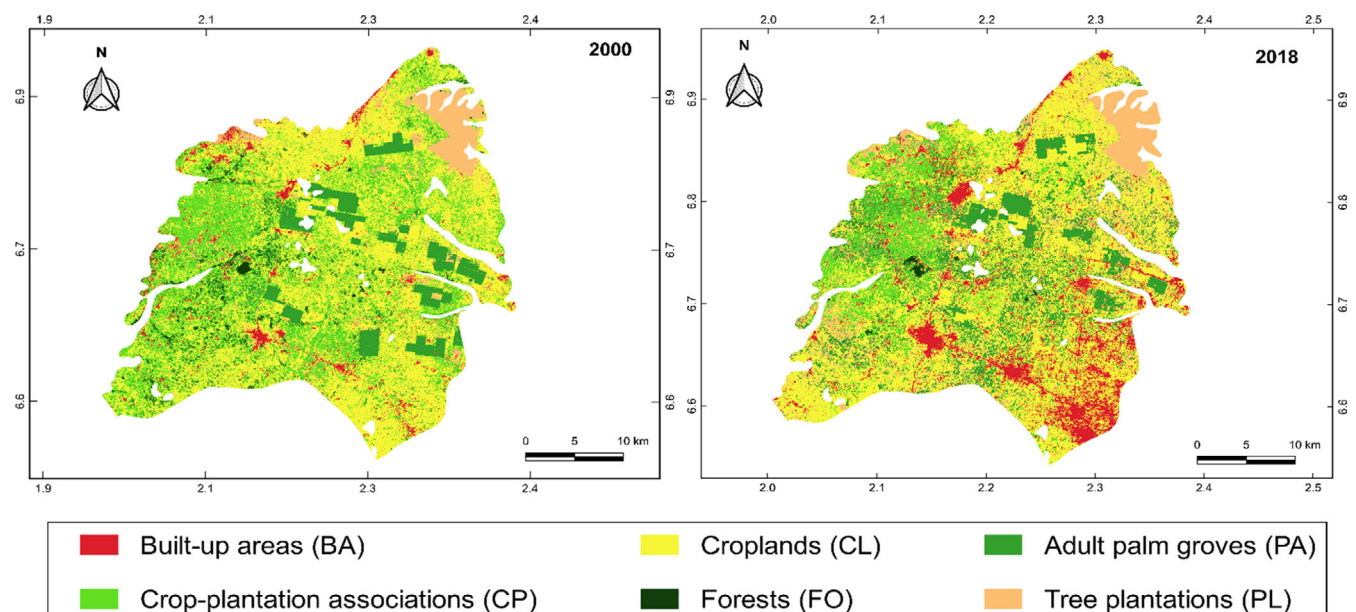
**TABLE 4** Areas represented by land use (in ha, estimated area  $\pm$  standard error, and as % of area occupied by Ferralsols) in 2000 and 2018

Land cover	2000		2018		Global rate of change (%)	Annual rate of change (%)
	Area (ha)	Area (%)	Area (ha)	Area (%)		
Built-up areas (BA)	4039 $\pm$ 58	4	12,395 $\pm$ 131	11	207	6
Forests (FO)	3206 $\pm$ 96	3	612 $\pm$ 11	1	-81	-9
Tree plantations (PL)	5819 $\pm$ 83	5	12,511 $\pm$ 220	12	115	4
Adult palm groves (PA)	8149 $\pm$ 254	8	19,106 $\pm$ 389	18	134	5
Crop-plantation associations (CP)	36,234 $\pm$ 1078	34	10,894 $\pm$ 123	10	-70	-7
Croplands (CL)	48,774 $\pm$ 1394	46	50,703 $\pm$ 1018	48	4	1
Total	106,221	100	106,221	100		

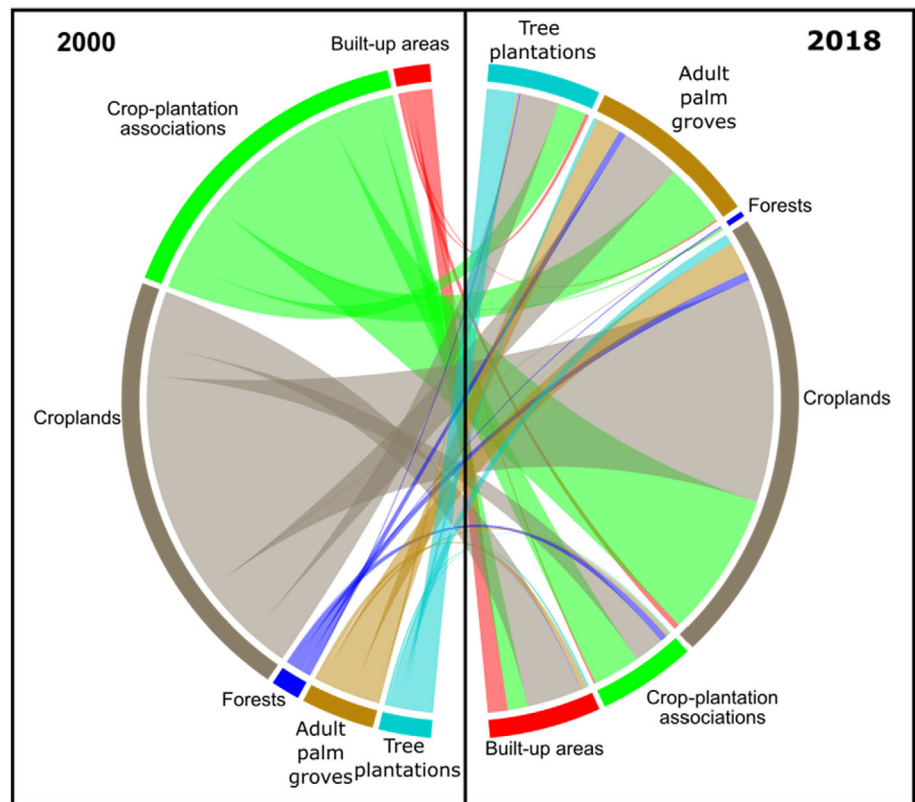
**TABLE 5** Distribution of the stock of C (gg C) in the various pools and all pools combined (total stock) according to the land use of Ferralsols for the years 2000 and 2018 for the whole study area

Land use	Aboveground biomass		Belowground biomass		Litter + woody necromass		Soil (0–30 cm)		Total stock	
	2000	2018	2000	2018	2000	2018	2000	2018	2000	2018
Forests (FO)	721 (20) <sup>a</sup>	138 (19)	173 (21)	33 (20)	90 (18)	17 (18)	138 (5)	26 (5)	1122 (13)	214 (13)
Tree plantations (PL)	658 (24)	1414 (24)	157 (24)	338 (24)	93 (21)	200 (21)	180 (4)	388 (4)	1088 (15)	2340 (15)
Adult palm groves (PA)	513 (8)	1204 (7)	122 (8)	287 (7)	90 (8)	210 (8)	187 (6)	439 (5)	913 (5)	2140 (5)
Crop-plantation associations (CP)	1413 (4)	425 (3)	326 (4)	98 (3)	72 (10)	22 (10)	833 (6)	251 (6)	2645 (4)	795 (2)
Croplands (CL)	0 (3)	0 (2)	0 (3)	0 (2)	49 (20)	51 (20)	1512 (9)	1572 (9)	1561 (9)	1622 (9)
Total stocks	3305 (7)	3180 (11)	779 (7)	755 (11)	394 (7)	500 (7)	2851 (5)	2676 (6)	7329 (4)	7111 (6)
$\Delta$ Stocks	-125 (6)		-24 (6)		106 (6)		-175 (6)		-218 (4)	

<sup>a</sup>Values in brackets are the percentage uncertainty (%) of C stock values.

**FIGURE 4** The classified maps of Ferralsol occupation in the study area in 2000 (left) and 2018 (right) [Colour figure can be viewed at [wileyonlinelibrary.com](https://onlinelibrary.wiley.com)]

**FIGURE 5** Chord diagram showing the conversion of land area in terms of land use over the period 2000–2018. [Colour figure can be viewed at [wileyonlinelibrary.com](http://wileyonlinelibrary.com)]



Built-up areas, adult palm groves, and tree plantations increased annually by 6%, 5%, and 4% respectively. In contrast, forests and crop-plantation associations lost 9% and 7% of their area annually.

The transition matrix analysis (Appendix D) indicates that 61% of the total area has been affected by the land use change between 2000 and 2018 in the study area. The changes in land use are mainly observable on a myriad of small areas represented by few pixels (Figure 4). Land uses on large plots (e.g., state tree plantations and palm groves under the management of rural development cooperatives) were less modified (Figure 4).

A chord diagram shows the transfers of area from one land use to another between 2000 and 2018 (Figure 5). Croplands were the land use which were most transformed into built-up areas. As a result, croplands gained on forests and on crop-plantation associations' areas. At the same time, some area of crop-plantation associations has been significantly transformed into adult palm groves and croplands. Forests area has been reduced in favour of adult palm groves, croplands, and crop-plantation associations. The increase in the area of tree plantations was mainly due to the conversion of croplands and crop-plantation associations between 2000 and 2018. The conversion of a small area of built-up area into tree plantations, adult palm groves and croplands could more likely be explained by classification errors (Appendices B and C).

### 3.3 | Evolution of the C stocks distribution among the land uses

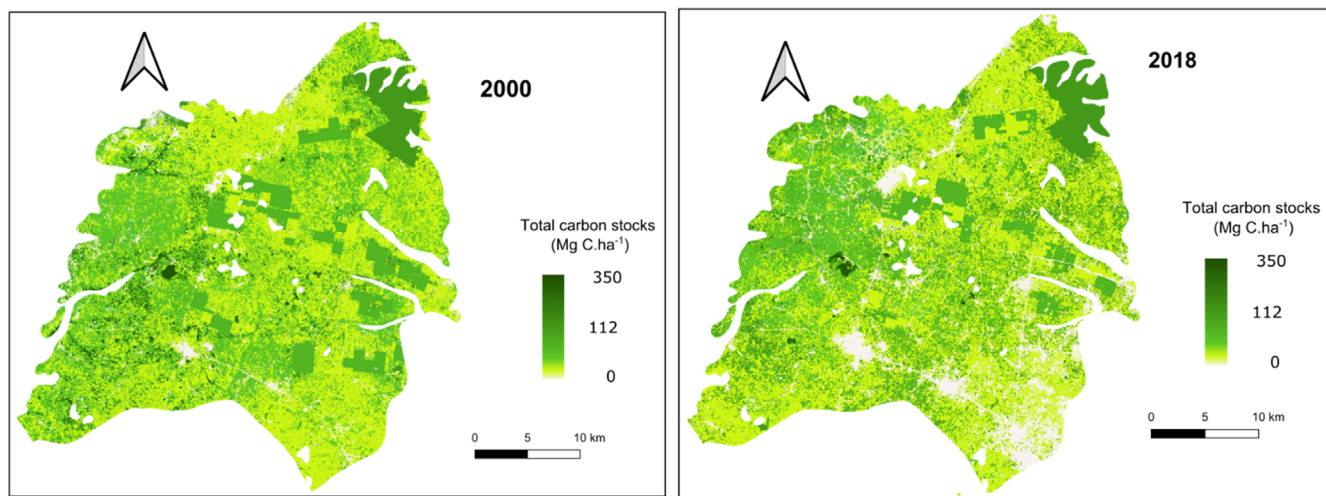
The total C stock map was presented in Figure 6. The total C stock of the Allada Plateau slightly decreased, about 3%, between 2000 and

2018 (7329 cf 7111 Gg C) (Table 5). The distribution of total C stocks of the Plateau showed that the smallest C reservoir of the area are respectively adult palm groves and forests in 2000 and 2018 (Table 5). In 2000, the total C stock of the area is mainly distributed in the crop-plantation associations and in croplands accounting for, respectively, 36% and 21% of the total C stock considering the Ferral soils occupation of the Allada Plateau. In 2018, due to changes in land use since 2000, the total C stock of the area is mainly distributed in the tree plantations and adult palm groves (33% and 30% of the total C stock respectively).

As a result of the decrease in the area of forests and crop-plantation associations, the total C stocks of these land uses, respectively, decreased of  $-908$  and  $-1850$  Gg C (Tables 4 and 5). In contrast, due to the increase in the area of tree plantations, adult palm groves, and croplands, 1252, 1227, and 61 Gg of extra C were respectively stored in these land uses in 2018 in the study area. However, the uncertainties associated with the calculated C stocks for each land use ranged between 2% and 15%. The uncertainties associated with the total C stocks in 2000 (7329 Gg C) and 2018 (7111 Gg C) were 4% and 6% respectively (Table 5).

### 3.4 | Evolution of the C stocks distribution among the different C pools

The distribution of C stocks in the different pools shows that the most important C pools are the aboveground biomass and the soil (0–30 cm). These two pools represent, respectively, 45% and 39% of the total C stock in the considered area in 2000 and 45% and 37% in 2018 (Table 5).



**FIGURE 6** Map of total carbon stocks in the study area in 2000 and 2018 (spatial resolution: 30 m). [Colour figure can be viewed at [wileyonlinelibrary.com](http://wileyonlinelibrary.com)]

From 2000 to 2018, only the C stocks contained in litter and deadwood have increased (Table 5). This increase is estimated at +106 Gg C with an uncertainty of 6% (Table 5). The other pools of C have decreased overall over the 18-year period (Table 5). The greatest losses were observed in the soil (−175 Gg C) and aboveground biomass (−125 Gg C) with 6% uncertainty around these calculated values. The C stock balance of areas on Ferralsols from 2000 to 2018 is slightly negative (Table 5). It is estimated at - 218 Gg C, that is, about 2 Mg C ha<sup>-1</sup> globally over the whole region, with an uncertainty of 4%. However, if the surface of built-up areas is excluded from the calculation, since the C stocks of built-up areas were considered to be null, the average C stocks per hectare of the total C stocks are 71 and 76 Mg C ha<sup>-1</sup>, respectively, for the year 2000 and 2018. There would therefore be a positive trend in C stock of +5 Mg C ha<sup>-1</sup> in the non-built-up areas of areas on Ferralsols of the Allada plateau.

## 4 | DISCUSSION

### 4.1 | Land use classification and changes analysis

The Ferralsols occupy 106,221 ha on the Allada Plateau. Land use change of this area was dynamic between 2000 and 2018, with 61% of the surfaces modified (Appendix D). This change particularly affected small private plots rather than large state or cooperatives plantations (Figure 3). This dynamic was also characterized by a significant extension of built-up areas (207%), adult palm groves (134%), and tree plantations (115%) to the detriment of forests (−81%) and crop-plantation associations (−70%). These results are in line with other observations made throughout the country (Brun et al., 2018; Guidigan et al., 2018; MCVDD, 2017; Tchiboza, 2020). From 2000 to 2018, the annual loss of forest area is estimated at 90,000 ha at the national scale, resulting in an overall change of 27% (FAO, 2020). Most research on land use dynamics pointed to agriculture as the

main driver of land degradation and deforestation (Guidigan et al., 2018; Olorunfemi et al., 2018). However, in our study, only a slight increase in the area of the land use type 'croplands' was recorded (+1929 ha). This can be explained by the reforestation actions of the Beninese Government to compensate as soon as possible for the loss of forest formations. Forest plantations were carried out, both by the national authorities and by farmers. In 2018, they cover a total area of 20,000 ha nationwide (FAO, 2020) with teak (*Tectona grandis* L.f.) and gmelina (*Gmelina arborea* Roxb) as the main species (Akouehou et al., 2013; Aoudji et al., 2014; Atindogbé et al., 2013). The state-owned teak plantations have difficulty ensuring the high demand for service wood (furniture making, carpentry, etc.) (Atindogbé et al., 2013). Therefore, many farmers invest in tree plantation, for example, teak plantation, to diversify and improve their incomes and/or secure their land (Aoudji et al., 2014). Increase in the surface area of smallholder teak and gmelina plantations can be observed on the Allada Plateau (+6692 ha) on small-sized plots (Figure 4). In the study area, the agriculture or tree plantation plots of smallholders are comprised between 0.25 and 1.5 ha, and the private palm groves areas are less than 5 ha (Aholoukpè et al., 2013; Aoudji et al., 2012). This increase in tree plantation surface areas is also associated with a strong increase in surface under oil palm plantations, that is, the land use of 'adult palm groves' (+10,957 ha, Figure 5).

The decrease in 2018 of crops-plantation association is explained by the fact that a large part of this land use is left under croplands (Figure 5). The decrease is probably also linked to the increase of oil palm plantations (Figure 5). The land use named 'crop-plantation associations' is dominated by a temporary oil palm agroforestry system. In the south of Benin, and particularly on the Allada Plateau, the landscape is dotted with oil palm trees, often family-owned. These oil palm trees have a particular life cycle (Akouehou et al., 2013). Oil palm plantation cycles last from 15 to 25 years (Aholoukpè, 2013). On smallholder farms, the first three years are often grown in association with annual or bi-annual crops (e.g., cassava, tomatoes, pineapple,

maize) (Aholoukpè et al., 2013; Koussihouédé et al., 2019; Nchanji et al., 2016). This temporary agroforestry system is motivated by the lack of arable land for family agriculture less than 5 ha and by the cost of maintaining the palm trees, which yield nothing in their first few years (Koussihouédé et al., 2019). The large area of crop-plantation associations land use in 2000 is composed by these temporary oil palm agroforestry system. The large area is partly the result of the successful distribution of selected planting material in rural areas in the 1990s as part of a government programme supporting palm oil production after the decline of state plantations (Adje & Adjadi, 2001). It is also explained by the social, cultural, and cultic importance of this plant for the local population. In this region, a farmer's wealth is measured by his holdings of palm trees (Akouehou et al., 2013). The decrease in the area of crop-plantation associations and the strong increase of adult palm groves land uses in 2018 compared to 2000 can be explained by the age of the young palm groves installed 20 years ago and in association with crops only during the first years, that is, in their immature stage.

The sharp increase in built-up areas is due to the increase in population density requiring the development of housing, administrative, and road infrastructures (Brun et al., 2018; Tchiboza, 2020). Benin's population increased from 6.7 million in 2002 to 10.6 million in 2015 (INSAE, 2015). Based on the last population census, the population density of the Atlantic department, where the Allada Plateau is located, close to the Cotonou and its agglomeration, increased from 225 inhabitants km<sup>-2</sup> in 2000 to 316 inhabitants km<sup>-2</sup> in 2015 (INSAE, 2015).

## 4.2 | The carbon stocks and carbon stock changes between 2000 and 2018

The land use on the Ferralsols of the Allada Plateau affected the C stocks of the four pools considered. At the plot scale, C was mainly located in the aboveground biomass of forests, tree plantations, adult palm groves, and crop-plantation associations. In the same way, the variation in C stock per hectare between land uses was mainly explained by large variations in the aboveground biomass (Houssoukpèvi et al., 2022, Table 3). The sandy soils of the study area store small amounts of C, unlike the biomass of forest and tree plantation ecosystems (Logah et al., 2020; Olorunfemi et al., 2020). By consequence at the landscape scale C stock was mainly located in biomass (45%). Nevertheless, the upper (0–30 cm) layer of soils accounted for 37%–39% of the total C stock because croplands surface represented about 50% of the surface of the area and did not account for biomass C.

The land use change between 2000 and 2018 modified the distribution of the C stocks from the forest to the plantations, as forest areas decreased and tree plantations and palm groves plantations increased (Figure 5). The land use change modified slightly the distribution of the C in the different carbon pools. All the C pools were affected by land uses except the litter + woody necromass, thanks to the installation of adult palm groves areas and tree plantations on croplands, or due to the growth of the palm groves from the crop-

plantation association. Litter in these land uses contained per hectare less C than in forest (Table 3), but these land uses represented much higher surface in the area. Because 50% of the surface is used for croplands and do not present C biomass, the variation of C stocks of the region between 2000 and 2018 was quite similar in both the soil and the aboveground biomass pools. The C stock variations were, respectively, –175 and –125 Gg C for the soil and aboveground biomass pools (Table 5). The decrease of biomass C stocks is attributed to a significant decrease in the area of forests. However, accounting only for C losses in the biomass would strongly underestimate the overall C stock losses in the region. Our results illustrate the need to measure or at least to estimate all C pools to have accurate estimation of C balance.

Our study estimated that between 2000 and 2018, the change in total C stocks in the study area tend to be slightly negative (– 218 Gg C) and was estimated to be 3%. This result is surprising as the land use changes concern 61% of the surface of the study area. The strong decrease in forest area (–2594 ha), that is, the land use with the highest C stocks in all pools compared to other land uses (Table 3), was the main cause of this C stock decrease. This result confirms that the loss of C stocks was due to land use conversion and in particular to the decrease in woody cover as observed in other studies (MCVDD, 2017; Woomeer et al., 2004; Zhang et al., 2017). However, the decrease of C stocks is slight and if built-up areas are excluded of the calculation, the mean C stock showed a positive trend with a mean gain of 5 Mg C ha<sup>-1</sup>. This can be explained by the large increase in the area of plantations (+6692 ha) and adult palm groves (+10,957 ha). The high aboveground biomass of these land uses with the large increase of the area dedicated to them, have been able to compensate for the loss of woody forest cover. State efforts in promoting the expansion of tree plantations and palm groves (Adje & Adjadi, 2001; Ganglo et al., 1999) have minimized C losses through the C stock of biomass, litter, and soil at a regional scale. Nevertheless, to secure the C stocks, the lifetime of wood harvested for supply services (carpentry, furniture, poles, etc.) should be considered in the long term.

## 4.3 | Accuracy of the estimated C stocks

The estimated C stocks at each date present uncertainties between 4% and 15% depending on the C pools, the land use or the date considered. These uncertainties are linked to (i) the heterogeneity of agricultural or forestry practices for a given land use and (ii) the errors in attributing areas to different land uses (GOFC-GOLD, 2016; IPCC, 2006; Olofsson et al., 2014). To ensure the representativeness of C stocks, a diversity of vegetation cover, and management practices were measured in each land use type (Houssoukpèvi et al., 2022). For example, state plantations of different ages (last cut 5 years ago and 21 years ago) and private teak and gmelina plantations (last cut 10 years ago and 5 years ago, respectively) were measured to represent C stocks in tree plantations and presented biomass C stocks from 55 to 295 Mg C ha<sup>-1</sup>. It seems difficult to distinguish

such heterogeneities on satellite images, but field surveys and monitoring with a higher sampling pressure could help to characterize the distribution of C stocks according to different vegetation cover or management practices inside a given land use, that is, by age, type of plantation, or cultivation. Also, the methodology used for land use mapping leads to area errors which could be counted twice, once per date, and explains part of the uncertainty. The classical diachronic analysis of land use change 'wall to wall' involved a pair-wise comparison of images (Houessou et al., 2013; Padonou et al., 2017). Individual errors on both the 2000 and the 2018 maps were accounted twice when estimating the land use change. The weak distinction between two land uses detailed in the confusion matrices, for example, in the 2000 map between crop-plantation associations and croplands or in the 2018 map between forests and adult palm groves, could be an individual error that can be considered as a change of cover from 1 year to the next (Fuller et al., 2003).

These errors in the land use change are recognized to be the main source of error in the carbon emission estimates (Harris et al., 2012; Pelletier et al., 2011). Improvements could be to use a supervised classification of several stacked satellite images acquired at different dates in a single analysis in order to directly identify changes (Grinand et al., 2013). Training data for the classification algorithm were not land uses but land use changes. This approach of the land use changes could be associated to long term monitoring of diachronic studies of C stocks. This method would reduce uncertainty but was not usable in our studied area due to the lack of data and knowledge on accurate localized land use changes on the Allada Plateau. Obtaining such information is challenging because precise historical land use changes are not well known or referenced in Benin yet. An improvement in the classification of land use patterns could also be envisaged by using high-resolution satellite images such as PLEIADES images (resolution 0.5 m per pixel).

Improvements in estimation of the C stocks evolution could also be suggested. The method we used imposes a strong assumption: the non-variation of C stocks of the pools (living, dead, litter, and soil biomass) if the land use pattern is unchanged. Thus, the study assumes that there has been no major change in forest vegetation structure, no forest degradation, no increase in plantation biomass, no change in the age structure of plantations, and no alteration of soils under cultivation. However, between 2000 and 2018, it is possible that changes in climate or in forest and crop management practices have altered soil or vegetation C stocks (including through C fluxes between pools). Future research should take these possible C stock variations into account, thanks to diachronic monitoring of C stocks over the long term. Finally, the study made the strong assumption that the C stock in built-up areas was negligible. The recent inclusion of urban parks and trees in cities, notably through green cities programmes, could significantly improve regional C balances. Given the high level of urbanization observed (+207% in 18 years in this study, Table 4), inventories of urban C stocks are necessary even in rural regions and in Africa, as is currently being done in large Northern cities (Cambou et al., 2018).

## 5 | CONCLUSIONS

The agricultural area of the Allada Plateau at the proximity of the economic capital of Benin experienced multiple changes in land use on small private plots as a result of human activities: 61% of the total area has undergone a land use change between 2000 and 2018. The expansion of built-up areas, tree, and palm plantations were particularly notable with a decrease in forest surface area. This strong dynamic of land use, and particularly the increase of tree plantations and adult palm groves, led to a small loss of C stock ( $\approx 3\%$ ) mainly in soil and aboveground biomass pools. Our results confirm the need to account for soil C, even in sandy areas, as responsible for non-negligible C stock variations. Our results should contribute to help planning and monitoring carbon stocks at the landscape level in climate mitigation effort plans. For instance, urgently secure the small remaining forested areas, because forest represent only 1% of the total surface of the studied area but still stored 3% of the total C; encourage plantations, as these could limit the loss of C stocks while improving the socio-economic conditions of the smallholders, and save land from urbanization. However, it is important to carry out interdisciplinary research on different services provided by the different land use on the Allada Plateau (food, energy, habitat, and biodiversity) and not only focused on C stocks. In addition, the uncertainties in the C stocks, between 4% and 15%, and the assumptions in this study encourage future research to be developed. To improve studies on the evolution of C stocks from local to national scales, long term field studies in rural areas as well as in the cities, characterization studies on the forestry and agricultural practices affecting soil C pools and stocks, studies on the history of the area, and the development of calibration and validation of satellite images methods should be performed.

## ACKNOWLEDGMENTS

This study was funded by the BNP Paribas Foundation through its 2017 Climate Initiative and the SoCa project (Beyond Climate, Soil C Sequestration to sustain family farming in the Tropics) and the French National Research Institute for Sustainable Development (IRD) for the doctoral fellowship (i.e., Allocation de Recherche pour une Thèse au Sud—ARTS) awarded to I.A. Houssoukpevi. The authors thank farmers, land owners, and public authorities for granting access to plots.

## DATA AVAILABILITY STATEMENT

The data that support the findings of this study are available from the corresponding author upon reasonable request.

## ORCID

Issiakou Alladé Houssoukpevi  <https://orcid.org/0000-0002-9810-2114>

## REFERENCES

- Adhikari, K., & Hartemink, A. E. (2016). Linking soils to ecosystem services—A global review. *Geoderma*, 262, 101–111. <https://doi.org/10.1016/j.geoderma.2015.08.009>
- Adje, I. A., & Adjadi, E. (2001). Diffusion du matériel végétal amélioré palmier à huile en milieu villageois: l'expérience du Bénin. *Oilseeds and Fats, Crops and Lipids*, 8, 529–533. <https://doi.org/10.1051/ocl.2001.0529>

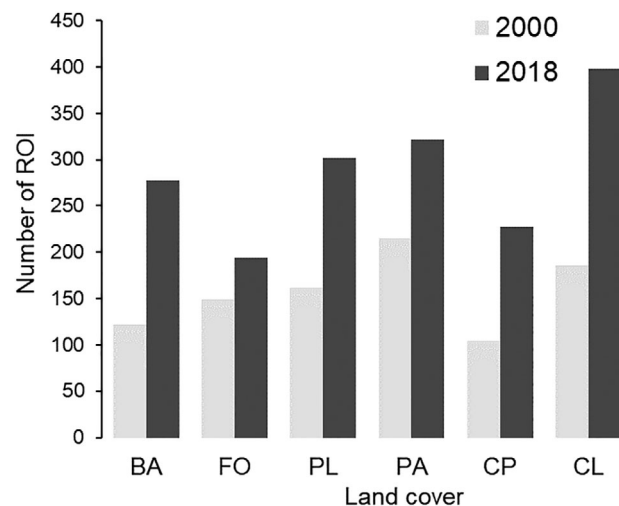
- Aholoukpe, H. (2013). *Matière organique du sol et développement du palmier à huile sous différents modes de gestion des feuilles d'élagage: cas des palmeraies villageoises du département du Plateau au Bénin*. Montpellier France: SupAgro.
- Aholoukpe, H., Vissoh, V., Amadji, G., Deleporte, P., Dubos, B., Nodichao, L., Glele Kakai, R., Chotte, J., & Balavet, D. (2013). Typologie des plantations villageoises de palmier à huile (*Elaeis guineensis* Jacq.) dans le département du Plateau au Bénin. *International Journal of Biological and Chemical Sciences*, 7, 978. <https://doi.org/10.4314/ijbcs.v7i3.8>
- Akouehou, G. S., Assogba, D., Houndonougbo, A., & Sinsin, A. (2013). Diversité floristique, sécurisation foncière et gestion des systèmes agroforestiers à palmier à huile (*Elaeis guineensis*) en zones périurbaines et rurales du Département de l'Atlantique au Sud du Bénin. *International Journal of Biological and Chemical Sciences*, 7, 1180. <https://doi.org/10.4314/ijbcs.v7i3.24>
- Aoudji, A., Adégbidi, A., Agbo, V., Atindogbé, G., Toyi, M., Yévidé, A., Ganglo, J., & Lebaillly, P. (2012). Functioning of farm-grown timber value chains: Lessons from the smallholder-produced teak (*Tectona grandis* L.f.) poles value chain in southern Benin. *Forest Policy and Economics*, 15, 98–107. <https://doi.org/10.1016/j.forpol.2011.10.004>
- Aoudji, A. K. N., Adégbidi, A., Ganglo, J. C., & Lebaillly, P. (2014). Teak, *Tectona grandis* L.f., planting in smallholders' farming system in southern Benin. *Bois et Forêts des Tropiques*, 68, 7–17. <https://doi.org/10.19182/bft2014.319.a20554>
- Asia Air Survey, Next GIS. (2012). *MOLUSCE: Modules for land use change evaluation*. Japan: NextGIS.
- Atindogbé, G., Fonton, N. H., & Lejeune, P. (2013). Evaluation de la ressource en teck, *Tectona grandis* L.f., des plantations privées du Sud-Bénin. *Bois & Forêts Des Tropiques*, 316, 93. <https://doi.org/10.19182/bft2013.316.a20533>
- Babbar, D., Areendran, G., Sahana, M., Sarma, K., Raj, K., & Sivadas, A. (2021). Assessment and prediction of carbon sequestration using Markov chain and InVEST model in Sariska Tiger Reserve, India. *Journal of Cleaner Production*, 278, 17. 123333. <https://doi.org/10.1016/j.jclepro.2020.123333>
- Bagstad, K. J., Semmens, D. J., Waage, S., & Winthrop, R. (2013). A comparative assessment of decision-support tools for ecosystem services quantification and valuation. *Ecosystem Services*, 5, 27–39. <https://doi.org/10.1016/j.ecoser.2013.07.004>
- Benz, U. C., Hofmann, P., Willhauck, G., Lingenfelder, I., & Heynen, M. (2004). Multi-resolution, object-oriented fuzzy analysis of remote sensing data for GIS-ready information. *ISPRS Journal of Photogrammetry and Remote Sensing*, 58, 239–258. <https://doi.org/10.1016/j.isprsjprs.2003.10.002>
- Breiman, L. (2001). Random Forests. *Machine Learning*, 45, 5–32. <https://doi.org/10.1023/A:1010933404324>
- Brun, L. E., Gaudence, D. J., Gibigaye, M., & Tente, B. (2018). Dynamique de l'occupation du sol dans les zones humides de la commune d'Allada au Sud-Benin (Sites Ramsar 1017 et 1018). *European Scientific Journal*, 14, 59. <https://doi.org/10.19044/esj.2018.v14n12p59>
- Buto, O., Galbiati, G. M., Alekseeva, N., & Bernoux, M. (2021). *Climate finance in the agriculture and land use sector – Global and regional trends between 2000 and 2018*. Rome, IT: FAO. <https://doi.org/10.4060/cb6056en>
- Cambou, A., Shaw, R. K., Huot, H., Vidal-Beaudet, L., Hunault, G., Cannavo, P., Nold, F., & Schwartz, C. (2018). Estimation of soil organic carbon stocks of two cities, New York City and Paris. *Science of the Total Environment*, 644, 452–464. <https://doi.org/10.1016/j.scitotenv.2018.06.322>
- Ciais, P. C., Bombelli, A., Williams, M., Piao, S. L., Chave, J., Ryan, C. M., Henry, M., Brender, P., & Valentini, R. (2011). The carbon balance of Africa: Synthesis of recent research studies. *Philosophical Transactions of the Royal Society A: Mathematical, Physical and Engineering Sciences*, 369, 2038–2057. <https://doi.org/10.1098/rsta.2010.0328>
- Clerici, N., Bodini, A., Eva, H., Grégoire, J.-M., Dulieu, D., & Paolini, C. (2007). Increased isolation of two biosphere reserves and surrounding protected areas (WAP ecological complex, West Africa). *Journal for Nature Conservation*, 15, 26–40. <https://doi.org/10.1016/j.jnc.2006.08.003>
- Corbeels, M., Cardinael, R., Naudin, K., Guibert, H., & Torquebiau, E. (2019). The 4 per 1000 goal and soil carbon storage under agroforestry and conservation agriculture systems in sub-Saharan Africa. *Soil and Tillage Research*, 188, 16–26. <https://doi.org/10.1016/j.still.2018.02.015>
- CPCS. (1967). *Classification des sols*. Grignon, France: ENSA.
- Daily, G. C., Polasky, S., Goldstein, J., Kareiva, P. M., Mooney, H. A., Pejchar, L., Ricketts, T. H., Salzman, J., & Shallenberger, R. (2009). Ecosystem services in decision making: Time to deliver. *Frontiers in Ecology and the Environment*, 7, 21–28. <https://doi.org/10.1890/080025>
- DGEC/MCVDD. 2017. *Première Contribution Déterminée au niveau National du Bénin Au Titre de l'Accord de Paris*. Ministère du Cadre de vie et du Développement Durable.
- Dibaba, A., Soromessa, T., & Workineh, B. (2019). Carbon stock of the various carbon pools in Gerba-Dima moist Afromontane forest, South-Western Ethiopia. *Carbon Balance and Management*, 14, 1–10. <https://doi.org/10.1186/s13021-019-0116-x>
- FAO. (2016). The agriculture sectors in the intended nationally determined contributions: Analysis. *Environment and Natural Resources Management*. Rome, IT: FAO.
- FAO. (2019). *Recarbonization of global soils: A tool to support the implementation of the Koronivia joint work on agriculture*. Rome, IT: FAO.
- FAO. (2020). *Evaluation des ressources forestières mondiales: Rapport Bénin*. Rome, IT: FAO.
- Fujisaki, K., Chevallier, T., Chapuis-Lardy, L., Albrecht, A., Razafimbelo, T., Masse, D., Ndour, Y. B., & Chotte, J. L. (2018). Soil carbon stock changes in tropical croplands are mainly driven by carbon inputs: A synthesis. *Agriculture, Ecosystems and Environment*, 259, 147–158. <https://doi.org/10.1016/j.agee.2017.12.008>
- Fuller, R. M., Smith, G. M., & Devereux, B. J. (2003). The characterisation and measurement of land cover change through remote sensing: Problems in operational applications? *International Journal of Applied Earth Observation and Geoinformation*, 4, 243–253. [https://doi.org/10.1016/S0303-2434\(03\)00004-7](https://doi.org/10.1016/S0303-2434(03)00004-7)
- Ganglo, J. C., Lejoly, J., & Pipar, T. (1999). Le teck au Bénin: Gestion et perspectives. *Bois & Forêts des Tropiques*, 261, 17–27.
- Gelaw, A. M., Singh, B. R., & Lal, R. (2014). Soil organic carbon and total nitrogen stocks under different land uses in a semi-arid watershed in Tigray, northern Ethiopia. *Agriculture, Ecosystems and Environment*, 188, 256–263. <https://doi.org/10.1016/j.agee.2014.02.035>
- GOFC-GOLD. (2016). A sourcebook of methods and a sourcebook of methods and procedures for monitoring and reporting anthropogenic greenhouse gas emissions and removals associated with deforestation, gains and losses of carbon stocks in forests remaining forests, and forest. *GOFC-GOLD Report version COP22-1*. The Netherlands: GOFC-GOLD Land Cover Project Office, Wageningen University.
- Goldstein, J. H., Caldaron, G., Duarte, T. K., Ennaanay, D., Hannahs, N., Mendoza, G., Polasky, S., Wolny, S., & Daily, G. C. (2012). Integrating ecosystem-service tradeoffs into land-use decisions. *Proceedings of the National Academy of Sciences*, 109, 7565–7570. <https://doi.org/10.1073/pnas.1201040109>
- Goussanou, C. A., Guendehou, S., Assogbadjo, A. E., Kaire, M., Sinsin, B., & Cuni-Sanchez, A. (2016). Specific and generic stem biomass and volume models of tree species in a West African tropical semi-deciduous forest. *Silva Fennica*, 50, 1–22. <https://doi.org/10.14214/sf.1474>
- Grinand, C., Le Maire, G., Vieilledent, G., Razakamanarivo, H., Azafimbelo, T., & Bernoux, M. (2017). Estimating temporal changes in soil carbon stocks at ecoregional scale in Madagascar using remote-sensing. *International Journal of Applied Earth Observation and Geoinformation*, 54, 1–14. <https://doi.org/10.1016/j.jag.2016.09.002>

- Grinand, C., Rakotomalala, F., Gond, V., Vaudry, R., Bernoux, M., & Vieilledent, G. (2013). Estimating deforestation in tropical humid and dry forests in Madagascar from 2000 to 2010 using multi-date Landsat satellite images and the random forests classifier. *Remote Sensing of Environment*, 139, 68–80. <https://doi.org/10.1016/j.rse.2013.07.008>
- Guendehou, G., Lehtonen, A., Moudachirou, M., Mäkipää, R., & Sinsin, B. (2012). Stem biomass and volume models of selected tropical tree species in West Africa. *Southern Forests*, 74, 37–41. <https://doi.org/10.2989/20702620.2012.701432>
- Guidigan, M. L. G., Sanou, C. L., Ragatoa, D. S., Fafa, C. O., & Mishra, V. N. (2018). Assessing land use/land cover dynamic and its impact in Benin Republic using land change model and CCI-LC products. *Earth Systems and Environment*, 3, 127–137. <https://doi.org/10.1007/s41748-018-0083-5>
- Guo, L. B., & Gifford, R. M. (2002). Soil carbon stocks and land use change: A meta analysis. *Global Change Biology*, 8, 345–360. <https://doi.org/10.1046/j.1354-1013.2002.00486.x>
- Hardisky, M. A., Daiber, F. C., Roman, C. T., & Klemas, V. (1984). Remote sensing of biomass and annual net aerial primary productivity of a salt marsh. *Remote Sensing of Environment*, 16, 91–106. [https://doi.org/10.1016/0034-4257\(84\)90055-5](https://doi.org/10.1016/0034-4257(84)90055-5)
- Harris, N. L., Brown, S., Hagen, S. C., Saatchi, S. S., Petrova, S., Salas, W., Hansen, M. C., Potapov, P. V., & Lotsch, A. (2012). Baseline map of carbon emissions from deforestation in tropical regions. *Science*, 336, 1573–1576. <https://doi.org/10.1126/science.1217962>
- Houessou, L. G., Tekla, O., Imorou, I. T., Lykke, A. M., & Sinsin, B. (2013). Land use and land-cover change at “W” biosphere reserve and its surroundings areas in Benin Republic (West Africa). *Environment and Natural Resources Research*, 3, 87. <https://doi.org/10.5539/enrr.v3n2p87>
- Hounkpatin, O. K. L., Op de Hipt, F., Bossa, A. Y., Welp, G., & Amelung, W. (2018). Soil organic carbon stocks and their determining factors in the Dano catchment (Southwest Burkina Faso). *Catena*, 166, 298–309. <https://doi.org/10.1016/j.catena.2018.04.013>
- Houssoukpèvi, I. A., Aholoukpè, H. N. S., Fassinou, D. J. M., Rakotondrazafy, M. N., Amadji, G. L., Chapuis-Lardy, L., & Chevallier, T. (2022). Biomass and soil carbon stocks of the main land use of the Allada Plateau. *Carbon Management*, 13, 249–265. <https://doi.org/10.1080/17583004.2022.2074314>
- INSAE. (2015). Effectifs de la population des villages et quartiers de ville du Bénin (RGPH-4, 2013). Cotonou, Benin: INSAE.
- IPCC. (2006). 2006 IPCC guidelines for national greenhouse gas inventories, prepared by the National Greenhouse Gas Inventories Programme. Tokyo, JP: IPCC.
- IPCC (2019a). Summary for policymakers. In P. R. Shukla, J. Skea, E. C. Buendia, V. Masson-Delmotte, H.-O. Pörtner, D. C. Roberts, P. Zhai, R. Slade, S. Connors, R. Diemen, M. van Ferrat, E. Haughey, S. Luz, S. Neogi, M. Pathak, J. Petzold, J. P. Pereira, P. Vyas, E. Huntley, et al. (Eds.), *Climate change and land: An IPCC special report on climate change, desertification, land degradation, sustainable land management, food security, and greenhouse gas fluxes in terrestrial ecosystems* (p. 41). Geneva, Switzerland: IPCC.
- IPCC. (2019b). 2019 Refinement to the 2006 IPCC Guidelines for National Greenhouse Gas Inventories. Kyoto, Japan.
- IUSS. (2015). World reference base for soil resources 2014. International soil classification system for naming soils and creating legends for soil maps. World Soil Resources Reports No. 106. Rome, IT: FAO.
- Kamusoko, C. (2019). *Remote sensing image classification in R*. Singapore: Springer. <https://doi.org/10.1007/978-981-13-8012-9>
- Kamusoko, C., Aniya, M., Adi, B., & Manjoro, M. (2009). Rural sustainability under threat in Zimbabwe—simulation of future land use/cover changes in the Bindura district based on the Markov-cellular automata model. *Applied Geography*, 29, 435–447. <https://doi.org/10.1016/j.apgeog.2008.10.002>
- Kora, S. H., Guendehou, G. S., Goussanou, C. A., Assogbadjo, A. E., & Sinsin, B. (2018). Allometric equations from a non-destructive approach for biomass prediction in natural forest and plantation in West Africa. *Southern Forests*, 81, 111–122. <https://doi.org/10.2989/20702620.2018.1512795>
- Koussihouédé, H., Clermont-Dauphin, C., Aholoukpè, H., Barthès, B., Chapuis-Lardy, L., Jassogne, L., & Amadji, G. (2019). Diversity and socio-economic aspects of oil palm agroforestry systems on the Allada Plateau, southern Benin. *Agroforestry Systems*, 94, 41–56. <https://doi.org/10.1007/s10457-019-00360-0>
- Leh, M. D. K., Matlock, M. D., Cummings, E. C., & Nalley, L. L. (2013). Quantifying and mapping multiple ecosystem services change in West Africa. *Agriculture, Ecosystems & Environment*, 165, 6–18. <https://doi.org/10.1016/j.agee.2012.12.001>
- Lillesand, T., Kiefer, R. W., & Chipman, J. (2015). *Remote sensing and image interpretation*. New York, NY, USA: John Wiley & Sons.
- Logah, V., Tetteh, E. N., Adegah, E. Y., Mawunyeia, J., Ofosu, E. A., & Asante, D. (2020). Soil carbon stock and nutrient characteristics of *Senna siamea* grove in the semi-deciduous forest zone of Ghana. *Open Geosciences*, 12, 443–451. <https://doi.org/10.1515/geo-2020-0167>
- Lorenz, K., & Lal, R. (2018). Soil carbon stock. *carbon sequestration in agricultural ecosystems*, 39–136. [https://doi.org/10.1007/978-3-319-92318-5\\_2](https://doi.org/10.1007/978-3-319-92318-5_2)
- Mather, P. M., & Koch, M. (2011). *Computer processing of remotely-sensed images: An introduction*. Hoboken, NY, USA: John Wiley & Sons. <https://doi.org/10.1002/9780470666517>
- MCVDD. (2017). Neutralité de la dégradation des terres (NDT): Note politique sur les cibles et mesures NDT. Bénin.
- Menezes, R. S. C., Sales, A. T., Primo, D. C., Albuquerque, E. R. G. M. d., Jesus, K. N. d., Pareyn, F. G. C., Santana, M. d. S., Santos, U. J. d., Martins, J. C. R., Althoff, T. D., Nascimento, D. M. d., Gouveia, R. F., Fernandes, M. M., Loureiro, D. C., Araújo Filho, J. C. d., Giongo, V., Duda, G. P., BJR, A., Ivo, W. M. P. d. M., ... Sampaio, E. V. d. S. B. (2021). Soil and vegetation carbon stocks after land-use changes in a seasonally dry tropical forest. *Geoderma*, 390, 11. 114943. <https://doi.org/10.1016/j.geoderma.2021.114943>
- Minasny, B., Malone, B. P., McBratney, A. B., Angers, D. A., Arrouays, D., Chambers, A., Chaplot, V., Chen, Z.-S., Cheng, K., Das, B. S., Field, D. J., Gimona, A., Hedley, C. B., Hong, S. Y., Mandal, B., Marchant, B. P., Martin, M., McConkey, B. G., Mulder, V. L., ... Winowiecki, L. (2017). Soil carbon 4 per mille. *Geoderma*, 292, 59–86. <https://doi.org/10.1016/j.geoderma.2017.01.002>
- Nchanji, Y. K., Nkongho, R. N., Mala, W. A., & Levang, P. (2016). Efficacy of oil palm intercropping by smallholders. Case study in South-West Cameroon. *Agroforestry Systems*, 90, 509–519. <https://doi.org/10.1007/s10457-015-9873-z>
- Newbold, T., Hudson, L. N., Hill, S. L. L., Contu, S., Lysenko, I., Senior, R. A., Börger, L., Bennett, D. J., Choimes, A., & Collen, B. (2015). Global effects of land use on local terrestrial biodiversity. *Nature*, 520, 45–50. <https://doi.org/10.1038/nature14324>
- Olofsson, P., Foody, G. M., Herold, M., Stehman, S. V., Woodcock, C. E., & Wulder, M. A. (2014). Good practices for estimating area and assessing accuracy of land change. *Remote Sensing of Environment*, 148, 42–57. <https://doi.org/10.1016/j.rse.2014.02.015>
- Olorunfemi, I. E., Fasinmirin, J. T., Olufayo, A. A., & Komolafe, A. A. (2018). GIS and remote sensing-based analysis of the impacts of land use/land cover change (LULCC) on the environmental sustainability of Ekiti State, southwestern Nigeria. *Environment, Development and Sustainability*, 22, 661–692. <https://doi.org/10.1007/s10668-018-0214-z>
- Olorunfemi, I. E., Fasinmirin, J. T., Olufayo, A. A., & Komolafe, A. A. (2020). Total carbon and nitrogen stocks under different land use/land cover types in the Southwestern region of Nigeria. *Geoderma Regional*, 22, 12. e00320. <https://doi.org/10.1016/j.geodrs.2020.e00320>

- Padonou, E. A., Lykke, A. M., Bachmann, Y., Idohou, R., & Sinsin, B. (2017). Mapping changes in land use/land cover and prediction of future extension of bowé in Benin, West Africa. *Land Use Policy*, 69, 85–92. <https://doi.org/10.1016/j.landusepol.2017.09.015>
- Pelletier, J., Ramankutty, N., & Potvin, C. (2011). Diagnosing the uncertainty and detectability of emission reductions for REDD+ under current capabilities: An example for Panama. *Environmental Research Letters*, 6, 12. 24005. <https://doi.org/10.1088/1748-9326/6/2/024005>
- Puyravaud, J. P. (2003). Standardizing the calculation of the annual rate of deforestation. *Forest Ecology and Management*, 177, 593–596. [https://doi.org/10.1016/S0378-1127\(02\)00335-3](https://doi.org/10.1016/S0378-1127(02)00335-3)
- Qiu, J., & Turner, M. G. (2013). Spatial interactions among ecosystem services in an urbanizing agricultural watershed. *Proceedings of the National Academy of Sciences*, 110, 12149–12154. <https://doi.org/10.1073/pnas.1310539110>
- Rodriguez-Galiano, V. F., Ghimire, B., Rogan, J., Chica-Olmo, M., & Rigol-Sanchez, J. P. (2012). An assessment of the effectiveness of a random forest classifier for land-cover classification. *ISPRS Journal of Photogrammetry and Remote Sensing*, 67, 93–104. <https://doi.org/10.1016/j.isprsjprs.2011.11.002>
- Rouse, J. W., Haas, R. H., Schell, J. A., & Deering, D. W. (1974). Monitoring vegetation systems in the Great Plains with ERTS. *NASA Special Publication*, 351, 309. <https://ntrs.nasa.gov/citations/19750020419>
- Rubel, F., & Kottek, M. (2010). Observed and projected climate shifts 1901–2100 depicted by world maps of the Köppen-Geiger climate classification. *Meteorologische Zeitschrift*, 19, 135–141. <https://doi.org/10.1127/0941-2948/2010/0430>
- Scharlemann, J. P. W., Tanner, E. V. J., Hiederer, R., & Kapos, V. (2014). Global soil carbon: Understanding and managing the largest terrestrial carbon pool. *Carbon Management*, 5, 81–91. <https://doi.org/10.4155/cmt.13.77>
- Sharp, R., Douglass, J., Wolny, S., Arkema, K., Bernhardt, J., Bierbower, W., Chaumont, N., Denu, D., Fisher, D., & Glowinski, K. (2020). In VEST 3.8. 7. User's guide. In *The Natural Capital Project, Stanford University, University of Minnesota*. Minneapolis, USA: The Nature Conservancy, and World Wildlife Fund.
- Tao, Y., Li, F., Liu, X., Zhao, D., Sun, X., & Xu, L. (2015). Variation in ecosystem services across an urbanization gradient: A study of terrestrial carbon stocks from Changzhou, China. *Ecological Modelling*, 318, 210–216. <https://doi.org/10.1016/j.ecolmodel.2015.04.027>
- Tchibozo, E. A. M. (2020). Modélisation de la dynamique spatio-temporelle de l'occupation du sol et analyse des changements du territoire de la Lama au Bénin. *European Scientific Journal*, 16, 500–524. <https://doi.org/10.19044/esj.2020.v16n6p499>
- Tieszen, L. L., Tappan, G. G., Tan, Z., & Tachie-Obeng, E. (2011). Land cover change, biogeochemical modelling of carbon stocks, and climate change in West Africa. *Africa and the Carbon Cycle*, 75, 75–83.
- Toyi, M. S., Barima, S., Mama, A., Andre, M., Bastin, J.-F., De Cannière, C., Sinsin, B., & Bogaert, J. (2013). Tree plantation will not compensate natural woody vegetation cover loss in the Atlantic Department of Southern Benin. *Tropicultura*, 31, 62–70. <http://www.tropicultura.org/text/v31n1/62.pdf>
- UNFCCC. (2013). A/R Methodological tool: Estimation of carbon stocks and change in carbon stocks in dead wood and litter in A/R CDM project activities Version 03.0. <https://cdm.unfccc.int/methodologies/ARmethodologies/tools/ar-am-tool-12-v3.0.pdf>
- UNFCCC. (2015). Measurements for estimation of carbon stocks in afforestation and reforestation project activities under the clean development mechanism: A field manual. Bonn, Germany: United Nations Framework Convention on Climate Change.
- Volkoff, B. (1976). Notice explicative no 66 (2) de la carte pédologique de reconnaissance de la République Populaire du Bénin à 1/200.000 - Feuille d'Abomey (2).
- Woomer, P. L., Tieszen, L. L., Tappan, G., Touré, A., & Sall, M. (2004). Land use change and terrestrial carbon stocks in Senegal. *Journal of Arid Environments*, 59, 625–642. <https://doi.org/10.1016/j.jaridenv.2004.03.025>
- Yirdaw, M. (2018). Carbon stock sequestered by selected tree species plantations in Wondo Genet College, Ethiopia. *Journal of Earth Science & Climatic Change*, 9, 5. <https://doi.org/10.4172/2157-7617.1000472>
- Zhang, F., Zhan, J., Zhang, Q., Yao, L., & Liu, W. (2017). Impacts of land use/cover change on terrestrial carbon stocks in Uganda. *Physics and Chemistry of the Earth*, 101, 195–203. <https://doi.org/10.1016/j.pce.2017.03.005>
- Zhao, Z., Liu, G., Mou, N., Xie, Y., Xu, Z., & Li, Y. (2018). Assessment of carbon storage and its influencing factors in Qinghai-Tibet Plateau. *Sustainability (Switzerland)*, 10, 1–17. <https://doi.org/10.3390/su10061864>
- Zhou, W., Huang, G., Troy, A., & Cadenasso, M. L. (2009). Object-based land cover classification of shaded areas in high spatial resolution imagery of urban areas: A comparison study. *Remote Sensing of Environment*, 113, 1769–1777. <https://doi.org/10.1016/j.rse.2009.04.007>

**How to cite this article:** Houssoukpevi, I. A., le Maire, G., Aholoukpè, H. N. S., Fassinou, D. J. M., Amadji, G. L., Chapuis-Lardy, L., & Chevallier, T. (2022). Effect of land use change on carbon stocks in an agricultural region of southern Benin. *Land Degradation & Development*, 1–17. <https://doi.org/10.1002/ldr.4545>

#### APPENDIX A: Total number of points of interest used on the Google Earth 2005 and 2017 images for the classification of the respective LANDSAT images of 2000 and 2018



BA, built-up area; CL, croplands; CP, crop-plantation associations; FO, forests; PA, adult palm groves; PL, tree plantations

### APPENDIX B: Confusion matrix from the 2000 image classification

Classification	Ground truth							Producer accuracy	User accuracy
	BA	CP	CL	FO	PA	PL	Total	%	
BA	33	0	1	0	0	1	35	92	94
CP	1	19	7	2	1	0	30	61	63
CL	1	7	45	0	0	1	54	82	83
FO	0	3	1	35	12	0	51	80	69
PA	0	2	0	7	51	1	61	80	84
PL	1	0	1	0	0	45	47	94	96
Total	36	31	55	44	64	48	278		

Note: Out-of-bag error (OOB) = 17.7%; Overall accuracy = 82%; *Kappa* Index = 0.78.

Abbreviations: BA, built-up area; CP, crop-plantation associations; CL, croplands; FO, forests; PA, adult palm groves; PL, tree plantations.

### APPENDIX C: Confusion matrix from the 2018 image classification

Classification	Ground truth							Producer accuracy	User accuracy
	BA	CP	CL	FO	PA	PL	Total	%	
BA	79	0	3	0	0	1	83	95	95
CP	0	68	2	1	2	0	73	97	93
CL	2	1	105	0	1	12	121	88	87
FO	0	1	0	49	13	3	66	84	74
PA	0	0	5	7	78	3	93	81	84
PL	2	0	4	1	2	71	80	79	89
Total	83	70	119	58	96	90	516		

Note: Out-of-bag error (OOB) = 13.8%; Overall accuracy = 87%; *Kappa* Index = 0.84.

Abbreviations: BA, built-up area; CP, crop-plantation associations; CL, croplands; FO, forests; PA, adult palm groves; PL, tree plantations.

**APPENDIX D: Transitions between the main land use between 2000 and 2018 in the study area**

Land cover 2000–2018	BA	CP	CL	FO	PA	PL	Total (ha)	Area with change of occupation	
								Area (ha)	Area (%)
BA	2423 <sup>a</sup>	224	711	11	219	451	4039	1616	2
CP	2320	5600 <sup>a</sup>	17,259	236	7425	3394	36,234	30,634	29
CL	6586	3588	26,681 <sup>a</sup>	132	7185	4602	48,774	22,093	21
FO	76	855	1047	184 <sup>a</sup>	852	192	3206	3022	3
PA	667	435	3764	30	2957 <sup>a</sup>	296	8149	5192	5
PL	323	192	1241	19	468	3576 <sup>a</sup>	5819	2243	2
Total (ha)	12,395	10,894	50,703	612	19,106	12,511	106,221	64,800	61

Abbreviations: BA, built-up area; CP, crop-plantation associations; CL, croplands; FO, forests; PA, adult palm groves; PL, tree plantations.

<sup>a</sup> Represent the permanence of the land use type.