



HAL
open science

Modeling the influence of human kinship systems on genetic diversity

Léa Guyon, Jérémy Guez, Evelyne Heyer, Raphaëlle Chaix

► **To cite this version:**

Léa Guyon, Jérémy Guez, Evelyne Heyer, Raphaëlle Chaix. Modeling the influence of human kinship systems on genetic diversity. Petit Pois Dérivé, May 2022, Lille, France. hal-03949416

HAL Id: hal-03949416

<https://hal.science/hal-03949416>

Submitted on 20 Jan 2023

HAL is a multi-disciplinary open access archive for the deposit and dissemination of scientific research documents, whether they are published or not. The documents may come from teaching and research institutions in France or abroad, or from public or private research centers.

L'archive ouverte pluridisciplinaire **HAL**, est destinée au dépôt et à la diffusion de documents scientifiques de niveau recherche, publiés ou non, émanant des établissements d'enseignement et de recherche français ou étrangers, des laboratoires publics ou privés.



Distributed under a Creative Commons Attribution 4.0 International License

Modeling the influence of human kinship systems on genetic diversity

L. Guyon¹, J. Guez¹, E. Heyer¹, R. Chaix¹

1 : UMR 7206 –Eco-anthropologie –Equipe Anthropologie Génétique, Musée de l'Homme (MNHN), France, Paris



Introduction

Human kinship systems are shaped by 3 major rules :

- the descent rule
- the alliance rule
- the post-marital residence rule

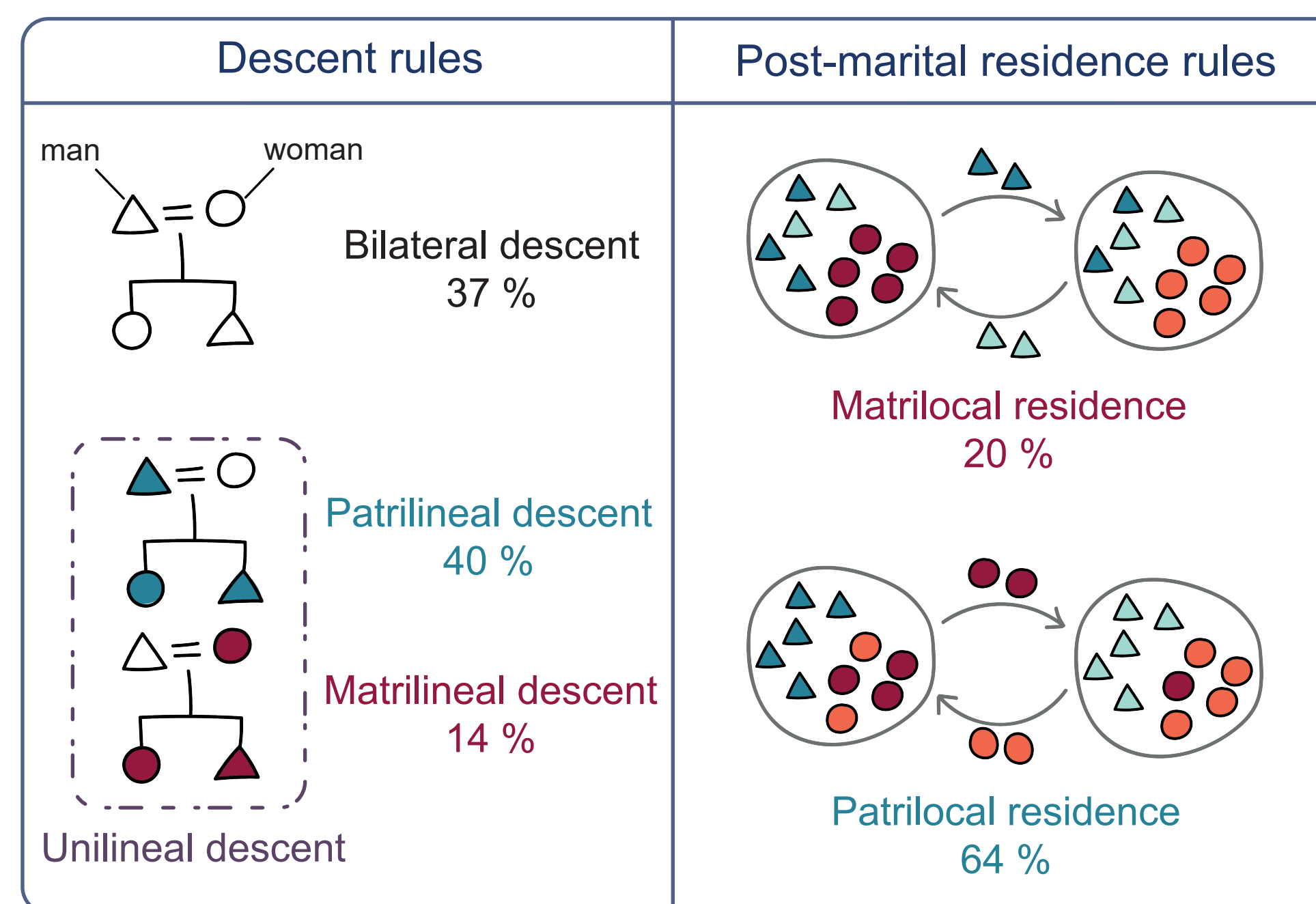
Definitions

descent rules define to which kinship group an individual is affiliated in a population.

unilineal descent is often associated with lineage exogamy, lineage fission and transmission of reproductive success.

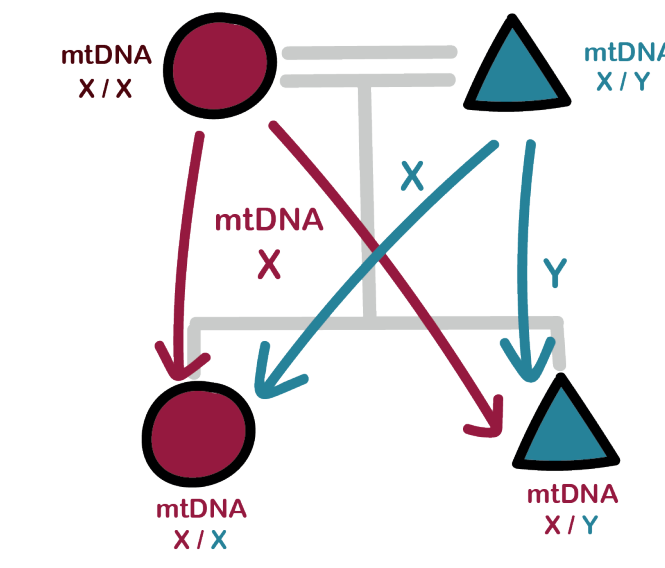
post-marital residence rules determine the place where a couple settles after marriage.

Most modern human populations are patrilocal and patrilineal. But little is known about the history of human kinship systems and in particular, about when patrilocality and patrilineality became overrepresented in human populations.



[7]

Several studies have highlighted that kinship systems can leave genetic signatures on uniparental markers [2, 10] and on X chromosomes [11], that are differentially transmitted according to the sex of individuals :



By modeling human populations displaying different descent and post-marital residence rules, and computing several diversity estimators on different markers (Y, mt, X, autosomes), we will **evaluate to which extent kinship rules impact genetic diversity in human populations, in order to trace back the history of kinship systems using genetic data.**

Methods

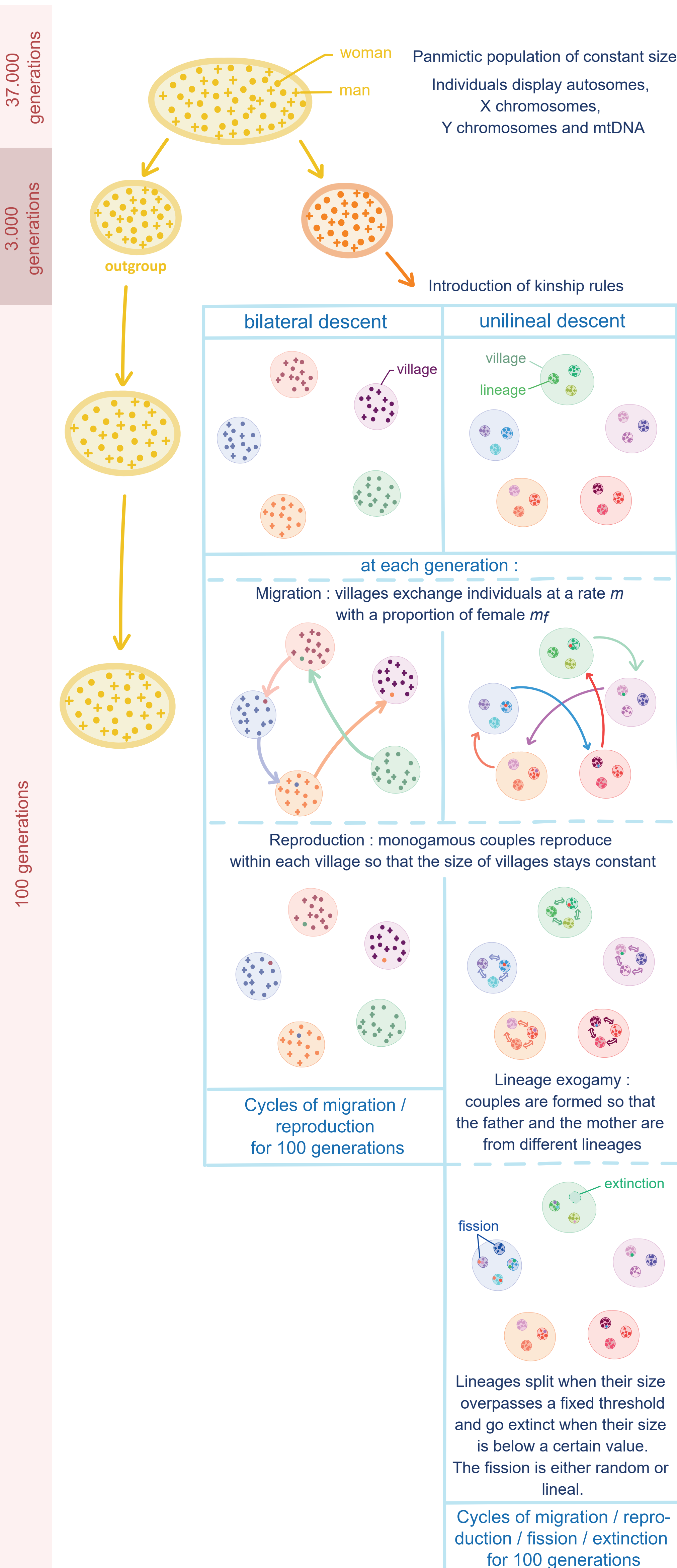
1) Run simulations with SLiM [3]



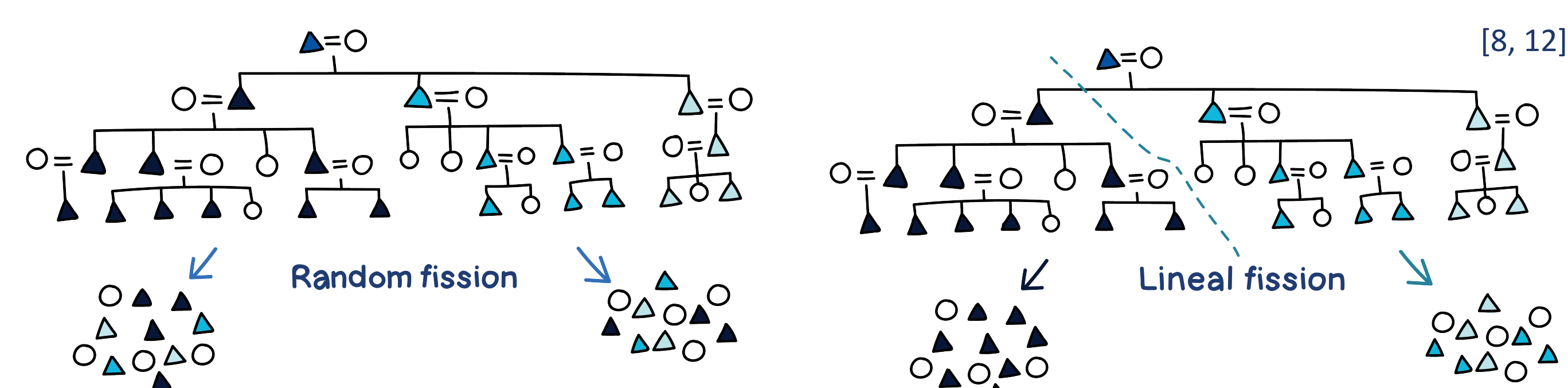
2) Handle tree sequences and generate VCF files with *tskit* [6] and *msprime* [1]



3) Compute diversity estimators



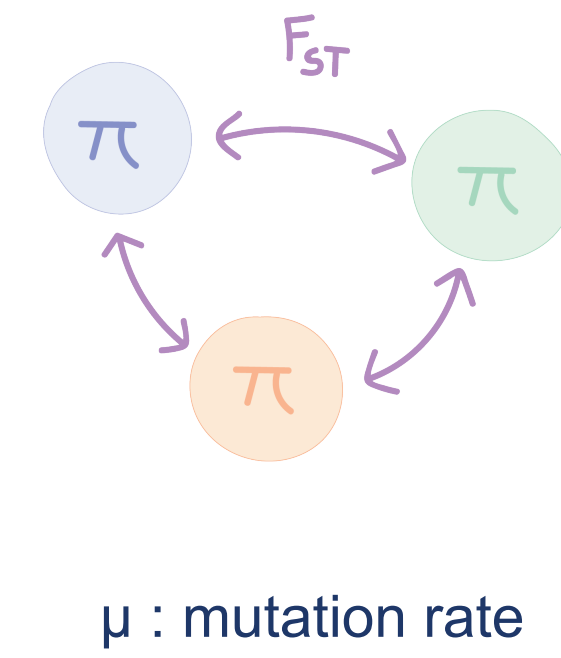
Two different fission types



[8, 12]

Results

Diversity estimators



Nucleotide diversity π
Mean pairwise differences within a village [9]

• X / autosomes diversity ratio :

$$Q_{\pi} = \frac{\pi_X}{\pi_A} \times \frac{\mu_A}{\mu_X} \quad [4]$$

• mt / Y diversity ratio :

$$\pi^{mt/Y} = \frac{\pi_{mt}}{\pi_Y} \times \frac{\mu_Y}{\mu_{mt}}$$

Genetic differentiation F_{ST}
between villages [13]

• X / autosomes diversity ratio :

$$Q_{F_{ST}} = \frac{\ln(1 - 2 F_{ST A})}{\ln(1 - 2 F_{ST X})} \quad [5]$$

• mt / Y diversity ratio :

$$F_{ST}^{Y/mt} = \frac{F_{ST Y}}{F_{ST mt}}$$

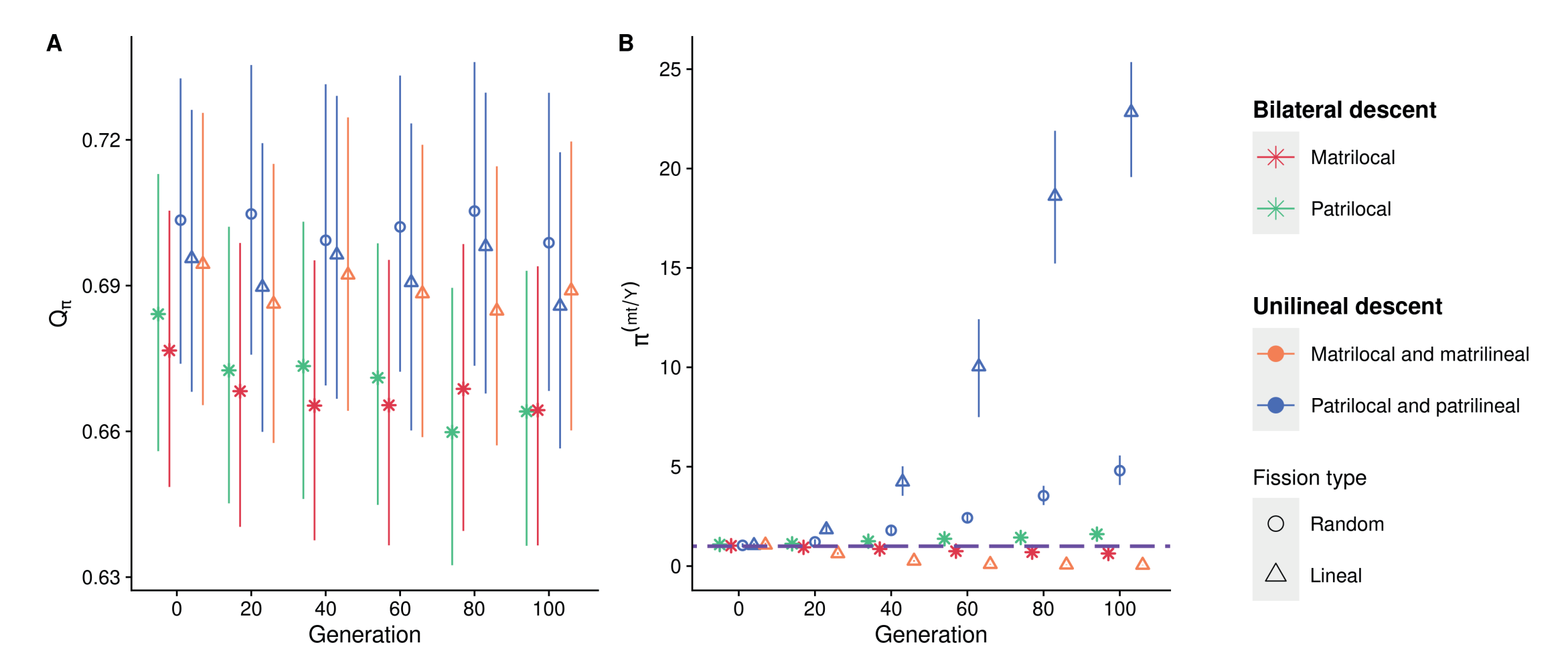


Fig 1 . Ratios of nucleotide diversity across generations from the introduction of kinship rules in villages

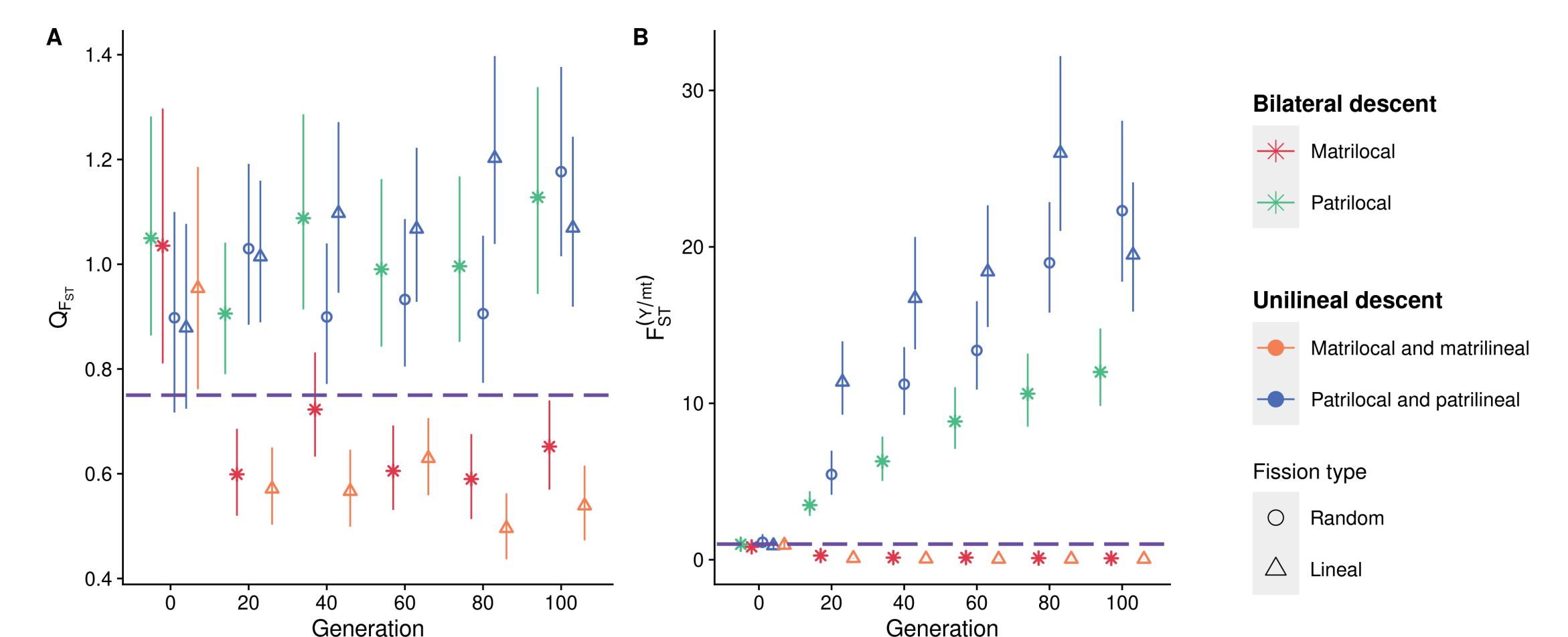


Fig 2 . Ratios of genetic differentiation across generations from the introduction of kinship rules in villages

Discussion

Diversity ratios allow the differentiation between kinship rules (Fig 1, 2). In particular, all ratios, except Q_{π} , enable to discriminate between **patrilocal / patrilineal** and **matrilocal / matrilineal** villages. However, only ratios using uniparental markers are able to make the difference between **patrilocal** villages with **bilateral** descent and **patrilocal** villages with **patrilineal** descent, as well as between **random** and **lineal** fission.

Perspectives :

- 1 - Identify other relevant estimators
- 2 - Test for the robustness of these estimators to low samples size and damaged pseudo-haploid sequences (aDNA)
- 3 - Compute these estimators on ancient DNA data
- 4 - Compare the results with the expected ratios generated under different models
- 5 - Trace back the history of human kinship systems

References

1. Baumdicker, F. et al. Efficient ancestry and mutation simulation with msprime 1.0. *Genetics* 220, iyab229 (2022).
2. Chaix, R. et al. From Social to Genetic Structures in Central Asia. *Current Biology* 17, 43–48 (2007).
3. Haller, B. C. & Messer, P. W. SLiM 3: Forward Genetic Simulations Beyond the Wright-Fisher Model. *Molecular Biology and Evolution* 36, 632–637 (2019).
4. Hammer, M. F., Mendez, F. L., Cox, M. P., Woerner, A. E. & Wall, J. D. Sex-Biased Evolutionary Forces Shape Genomic Patterns of Human Diversity. *PLoS Genet* 4, e1000202 (2008).
5. Keinan, A., Mullikin, J. C., Patterson, N. & Reich, D. Accelerated genetic drift on chromosome X during the human dispersal out of Africa. *Nature Genetics* 41, 66–70 (2009).
6. Kelleher, J., Etheridge, A. M. & McVean, G. Efficient Coalescent Simulation and Genealogical Analysis for Large Sample Sizes. *PLoS Computational Biology* 12, e1004842 (2016).
7. Murdock, G. & White, D. *Standard Cross-Cultural Sample*: on-line edition 2008. Working Papers Series, Social Dynamics and Complexity, Institute for Mathematical Behavioral Sciences, UC Irvine <http://escholarship.org/uc/>, (2008).
8. Neel, J. V. & Salzano, F. M. Further studies on the Xavante Indians. X. Some hypotheses-generalizations resulting from these studies. *Am J Hum Genet* 19, 554–574 (1967).
9. Nei, M. & Li, W. H. Mathematical model for studying genetic variation in terms of restriction endonucleases. *Proceedings of the National Academy of Sciences* 76, 5269–5273 (1979).
10. Oota, H., Settheetham-Ishida, W., Tiwawech, D., Ishida, T. & Stoneking, M. Human mtDNA and Y-chromosome variation is correlated with matrilineal versus patrilineal residence. *Nat Genet* 29, 20–21 (2001).
11. Séguérel, L. et al. Sex-Specific Genetic Structure and Social Organization in Central Asia: Insights from a Multi-Locus Study. *PLoS Genet* 4, e1000200 (2008).
12. Smouse, P. E., Vitzthum, V. J. & Neel, J. V. The impact of random and lineal fission on the genetic divergence of small human groups: a case study among the Yanomamoi. *Am J Hum Genet* 19 (1981).
13. Weir, B. S. & Cockerham, C. C. Estimating F-Statistics for the Analysis of Population Structure. *Evolution* 38, 1358–1370 (1984).