



HAL
open science

Association of Nonpharmaceutical Interventions During the COVID-19 Pandemic With Invasive Pneumococcal Disease, Pneumococcal Carriage, and Respiratory Viral Infections Among Children in France

Alexis Rybak, Corinne Levy, François Angoulvant, Anne Auvrignon, Piotr Gembara, Kostas Danis, Sophie Vaux, Daniel Levy-Bruhl, Sylvie van der Werf, Stéphane Béchet, et al.

► To cite this version:

Alexis Rybak, Corinne Levy, François Angoulvant, Anne Auvrignon, Piotr Gembara, et al.. Association of Nonpharmaceutical Interventions During the COVID-19 Pandemic With Invasive Pneumococcal Disease, Pneumococcal Carriage, and Respiratory Viral Infections Among Children in France. *JAMA Network Open*, 2022, 5 (6), pp.e2218959. 10.1001/jamanetworkopen.2022.18959 . hal-03941118

HAL Id: hal-03941118

<https://hal.science/hal-03941118>

Submitted on 23 Mar 2023

HAL is a multi-disciplinary open access archive for the deposit and dissemination of scientific research documents, whether they are published or not. The documents may come from teaching and research institutions in France or abroad, or from public or private research centers.

L'archive ouverte pluridisciplinaire **HAL**, est destinée au dépôt et à la diffusion de documents scientifiques de niveau recherche, publiés ou non, émanant des établissements d'enseignement et de recherche français ou étrangers, des laboratoires publics ou privés.



Distributed under a Creative Commons Attribution 4.0 International License



Original Investigation | Pediatrics

Association of Nonpharmaceutical Interventions During the COVID-19 Pandemic With Invasive Pneumococcal Disease, Pneumococcal Carriage, and Respiratory Viral Infections Among Children in France

Alexis Rybak, MD; Corinne Levy, MD; François Angoulvant, PhD; Anne Auvrignon, MD; Piotr Gembara, MD; Kostas Danis, PhD; Sophie Vaux, PharmD; Daniel Levy-Bruhl, MD; Sylvie van der Werf, PhD; Stéphane Béchet, MSc; Stéphane Bonacorsi, PhD; Zein Assad, MD; Andréa Lazzati, PhD; Morgane Michel, PhD; Florentia Kaguelidou, PhD; Albert Faye, PhD; Robert Cohen, MD; Emmanuelle Varon, MD; Naim Ouldali, PhD

Abstract

IMPORTANCE An association between pneumococcal nasopharyngeal carriage and invasive pneumococcal disease (IPD) has been previously established. However, it is unclear whether the decrease in IPD incidence observed after implementation of nonpharmaceutical interventions (NPIs) during the COVID-19 pandemic was associated with concomitant changes in pneumococcal carriage and respiratory viral infections.

OBJECTIVE To assess changes in IPD incidence after the implementation of NPIs during the COVID-19 pandemic and examine their temporal association with changes in pneumococcal carriage rate and respiratory viral infections (specifically respiratory syncytial virus [RSV] and influenza cases) among children in France.

DESIGN, SETTING, AND PARTICIPANTS This cohort study used interrupted time series analysis of data from ambulatory and hospital-based national continuous surveillance systems of pneumococcal carriage, RSV and influenza-related diseases, and IPD between January 1, 2007, and March 31, 2021. Participants included 11 944 children younger than 15 years in France.

EXPOSURES Implementation of NPIs during the COVID-19 pandemic.

MAIN OUTCOMES AND MEASURES The estimated fraction of IPD change after implementation of NPIs and the association of this change with concomitant changes in pneumococcal carriage rate and RSV and influenza cases among children younger than 15 years. The estimated fraction of change was analyzed using a quasi-Poisson regression model.

RESULTS During the study period, 5113 children (median [IQR] age, 1.0 [0.6-4.0] years; 2959 boys [57.9%]) had IPD, and 6831 healthy children (median [IQR] age, 1.5 [0.9-3.9] years; 3534 boys [51.7%]) received a swab test. Data on race and ethnicity were not collected. After NPI implementation, IPD incidence decreased by 63% (95% CI, -82% to -43%; $P < .001$) and was similar for non-13-valent pneumococcal conjugate vaccine serotypes with both high disease potential (-63%; 95% CI, -77% to -48%; $P < .001$) and low disease potential (-53%; 95% CI, -70% to -35%; $P < .001$). The overall pneumococcal carriage rate did not significantly change after NPI implementation (-12%; 95% CI, -37% to 12%; $P = .32$), nor did the carriage rate for non-PCV13 serotypes with high disease potential (-26%; 95% CI, -100% to 52%; $P = .50$) or low disease potential (-7%; 95% CI, -34% to 20%; $P = .61$). After NPI implementation, the estimated number of influenza cases decreased by 91% (95% CI, -74% to -97%; $P < .001$), and the estimated number of RSV cases decreased by 74% (95% CI, -55% to -85%; $P < .001$). Overall, the decrease in influenza and RSV cases accounted for 53% (95% CI, -28% to -78%; $P < .001$) and 40% (95% CI, -15% to

(continued)

Key Points

Question Was the implementation of nonpharmaceutical interventions (NPIs) during the COVID-19 pandemic associated with changes in the incidence of invasive pneumococcal disease (IPD) and associated pneumococcal carriage and respiratory viral infections (RSVs) in children in France?

Findings In this cohort study using interrupted time series analysis of data from multiple national surveillance systems involving 11 944 children, the incidence of pediatric IPD decreased after implementation of NPIs during the COVID-19 pandemic. This decrease was associated with decreases in influenza and RSV cases, but the pneumococcal carriage rate remained stable.

Meaning These results suggest that the established association between pneumococcal carriage and IPD was modified after viral epidemiological changes associated with NPIs, suggesting that interventions targeting respiratory viruses may help prevent a large proportion of pediatric IPD cases.

+ [Invited Commentary](#)

+ [Supplemental content](#)

Author affiliations and article information are listed at the end of this article.

Open Access. This is an open access article distributed under the terms of the CC-BY License.

Abstract (continued)

–65%; $P = .002$) of the decrease in IPD incidence during the NPI period, respectively. The decrease in IPD incidence was not associated with pneumococcal carriage, with carriage accounting for only 4% (95% CI, –7% to 15%; $P = .49$) of the decrease.

CONCLUSIONS AND RELEVANCE In this cohort study of data from multiple national continuous surveillance systems, a decrease in pediatric IPD incidence occurred after the implementation of NPIs in France; this decrease was associated with a decrease in viral infection cases rather than pneumococcal carriage rate. The association between pneumococcal carriage and IPD was potentially modified by changes in the number of RSV and influenza cases, suggesting that interventions targeting respiratory viruses, such as immunoprophylaxis or vaccines for RSV and influenza, may be able to prevent a large proportion of pediatric IPD cases.

JAMA Network Open. 2022;5(6):e2218959. doi:10.1001/jamanetworkopen.2022.18959

Introduction

Streptococcus pneumoniae is a major cause of community-acquired invasive bacterial infections worldwide, with more than 300 000 deaths among children aged 1 to 59 months in 2015.¹ The association between pneumococcal carriage and invasive pneumococcal disease (IPD) has been well described for decades. Nasopharyngeal carriage is a necessary step preceding any pneumococcal disease.^{2,3} All countries monitoring both carriage and IPD in the same population have found an association between carriage and IPD, which is the basis of the disease potential concept, defined as the ability for each serotype to cause disease when that serotype is carried.⁴ Disease potential is consistent from country to country and may be subject to few variations over time.^{4,5} In this context, a review of several simulation studies⁶ proposed surveilling pneumococcal carriage as a proxy to monitor epidemiological change in IPD and assess the outcomes of pneumococcal conjugate vaccine (PCV) implementation.

Viral infections, mainly respiratory syncytial virus (RSV) and influenza, also play a role in triggering pneumococcal disease, including IPD.^{7,8} However, some studies^{9,10} have suggested that this viral coinfection was important for serotypes with low disease potential but less important for serotypes with high disease potential, which may be virulent enough to generate disease without a viral trigger. Thus, the disease potential and impact of PCV implementation with regard to IPD is often estimated without accounting for changes in viral infections. However, the accurate role of viral infections in the ability of pneumococcal serotypes to evolve from colonization to disease has not yet been clarified.

Since March 2020, several mitigation measures have been implemented to reduce the spread of SARS-CoV-2 infection.¹¹ A substantial change in viral infections was observed after the implementation of nonpharmaceutical interventions (NPIs), such as social distancing and mask wearing.¹² In France, the 2020 to 2021 bronchiolitis outbreak was delayed by 3 months, and the peak was reduced by one-half, with no influenza outbreak reported during the year after NPI implementation.¹³ Furthermore, a large decrease in the incidence of IPD was reported worldwide after these measures were implemented.¹⁴ We therefore aimed to identify, using estimated fraction of change, the changes in IPD incidence after NPI implementation during the COVID-19 pandemic and the association of these changes with concomitant changes in pneumococcal carriage and respiratory viral infections (specifically RSV and influenza cases) among children in France.

Methods

Study Design

This cohort study used an interrupted time series analysis of data from several national ambulatory and hospital-based pediatric continuous surveillance systems to analyze IPD incidence, pneumococcal nasopharyngeal carriage in healthy children, serotype distribution among pneumococcal strains isolated from IPD and carriers, and RSV and influenza cases in children. Written informed consent was obtained from parents or legal guardians for the carriage study. This study was approved by the Saint-Germain-en-Laye Ethics Committee. Because other surveillance systems (eg, the National Reference Centre for Pneumococci [NRCP] and RSV and influenza surveillance systems) are part of ongoing surveillance programs coordinated by Santé Publique France, the national public health agency, ethics committee approval and written or verbal informed consent were not required according to the French regulatory authorities (the Commission Nationale de l'Informatique et des Libertés [CNIL] and the Comité d'Expertise pour les Recherches, les Études et les Évaluations dans le Domaine de la Santé [CESREES]). This study followed the Strengthening the Reporting of Observational Studies in Epidemiology (STROBE) reporting guideline.

Study Data and Settings

Invasive Pneumococcal Disease Incidence

The data for IPD incidence from January 1, 2007, to March 31, 2021, were extracted from the French hospital medical information database (Programme de Medicalisation des Systèmes d'Information [PMSI]), an exhaustive national medicoadministrative database that includes all inpatients admitted to any public or private hospital in France.¹⁵ Diagnoses were coded according to the *International Classification of Diseases, Tenth Revision (ICD-10)*. An IPD case in a child younger than 15 years was defined as a hospitalization with a primary or secondary diagnosis of pneumococcal meningitis (*ICD-10* code G001) or pneumococcal bacteremia (*ICD-10* code A403). We collected data on age, sex, dates of hospitalization, and deaths. We used the age-specific French population obtained from the National Institute for Statistics and Economic Studies as the denominator to calculate the IPD incidence per 100 000 children.¹⁶

Pneumococcal Carriage in Healthy Children

Between November 1, 2006, and April 30, 2021, we collected data from national continuous surveillance systems involving 77 pediatricians from all French metropolitan regions who obtained nasopharyngeal swabs from healthy children 6 months and older.¹⁷ Children were excluded if they received antibiotic treatment within 7 days before the swab test. Deep nasopharyngeal samples were obtained and analyzed at the NRCP (Créteil, France) and Robert Debré Hospital (Paris, France). Details on microbiological investigations were published previously.^{18,19} Data collected included medical history and receipt of antibiotic treatment during the 3 months before inclusion.

Influenza and RSV Surveillance Systems

We used influenza-like illness as a proxy for influenza cases.²⁰ Data were obtained between January 1, 2015, and March 31, 2021, from the Organisation de la Surveillance Coordonnées des Urgences (OSCOUR) network, a national continuous surveillance study.²¹ The OSCOUR gathers data from more than 90% of emergency department visits in France. The number of influenza-like illnesses in children younger than 15 years is transmitted each week to Santé Publique France.

Data on RSV were obtained during the same period from the Réseau National de Laboratoires Hospitaliers surveillance network,²² a national continuous surveillance system. Approximately 40 hospital-based laboratories in France reported the weekly number of tests performed and the test results for RSV detection during the RSV epidemic period. All nasopharyngeal tests from both outpatient and hospitalized patients are included without age restriction. These data are transmitted to Santé Publique France and used for weekly epidemiological reports. We also extracted the number

of pediatric emergency department visits for bronchiolitis from the OSCOUR network to conduct a sensitivity analysis based on RSV-related disease.

Microbiological Serotyping

Each year, IPD strains isolated in children younger than 15 years are sent to the NRCP for antimicrobial testing and serotyping.²³ All *S pneumoniae* strains isolated from healthy carriers and individuals with IPD were serotyped by the NRCP using latex agglutination with antiserum samples provided by the Statens Serum Institute (Copenhagen, Denmark). Serotypes 15B and 15C were considered a single serotype (15B/C) because their capsule is quickly interchangeable.²⁴ Based on data in the literature, serotypes 8, 10A, 12F, 22F, 24F, 33F, and 38 were considered non-13-valent PCV (PCV13) serotypes with high disease potential.⁵ Serotypes 6C, 11A, 15A, 15B/C, 17F, 19F, 21, 23A, 23B, 31, 34, 35B, 35F, and nontypeable were considered non-PCV13 serotypes with low disease potential.⁵

National Nonpharmaceutical Interventions

Since 2003, the 7-valent PCV (PCV7) has been recommended in France. In 2010, the PCV7 was replaced by the PCV13 for all children younger than 2 years without a catch-up vaccination schedule. Vaccination coverage with PCV13 remained greater than 90% during the study period.²⁵ Between March 17 and May 11, 2020, a strict lockdown was implemented to reduce the spread of COVID-19.¹¹ The lockdown was gradually followed by various mitigation strategies, including social distancing, wearing of face masks by adults and children older than 6 years, and a night curfew. Details of the NPIs implemented in France were provided by the European Centre for Disease Prevention and Control (eTable 1 and eFigure 1 in the [Supplement](#)).¹¹

We organized the study period into 4 intervals: (1) the PCV7 period from November 1, 2006, to May 31, 2010; (2) the early PCV13 period from June 1, 2011, to December 31, 2014; (3) the late PCV13 period from January 1, 2015, to February 29, 2020; and (4) the NPI period from April 1, 2020, to April 30, 2021. We divided the PCV13 period into early and late categories based on a previously published study¹² that reported a recurrence of increased IPD incidence in children because of serotype replacement since January 2015 in France.

Outcome Measures

The primary outcome was the estimated fraction of change in IPD incidence after implementation of NPIs and the association of this change with concomitant changes in pneumococcal carriage rate and the number of respiratory viral infections (specifically influenza and RSV cases) among children younger than 15 years. The secondary outcomes were (1) the monthly incidence of IPD over time among children younger than 15 years, (2) the monthly incidence of IPD associated with serotypes with high and low disease potential over time among children younger than 15 years, (3) the monthly pneumococcal carriage rate over time among healthy children younger than 15 years, (4) the monthly pneumococcal carriage rate of serotypes with high and low disease potential over time among healthy children younger than 15 years, (5) the estimated fraction of IPD change after implementation of NPIs among children who had serotypes with high and low disease potential that was associated with pneumococcal carriage rate and respiratory viral infections (ie, RSV and influenza cases) among children younger than 15 years, (6) the monthly incidence of influenza over time among children younger than 15 years, and (7) the monthly incidence of bronchiolitis over time among children younger than 2 years. For the primary outcome, we used data from January 1, 2007, to March 31, 2021. For the secondary outcomes, we decided to present all of the data available for IPD incidence (from January 1, 2007, to March 31, 2021), the numbers of RSV and influenza cases (from January 1, 2015, to 31 March, 2021), and the pneumococcal carriage rate (from November 1, 2006, to April 30, 2021).

We also conducted a specific analysis for serotype 24F because it has been the leading nonvaccine serotype involved in IPD in France since 2015.²³ As a control outcome, we analyzed the

monthly incidence of *Escherichia coli* invasive disease over time among children younger than 15 years because NPI implementation was not expected to have consequences for this disease.

Statistical Analysis

First, we built a segmented linear regression model with autoregressive error to estimate the change in IPD incidence after NPI implementation.^{26,27} This model accounted for autocorrelation, seasonality, and temporal patterns before and after the NPIs were implemented. We accounted for seasonality by using an additive model.²⁸ We used an autoregressive moving-average term to account for the remaining autocorrelation. According to the literature,⁵ we hypothesized that NPI implementation would have immediate consequences for IPD incidence. Therefore, we included a dummy variable in the model estimating the immediate change after the intervention.²⁸ The time unit was set at 1 month. March 2020 was considered a transitional period because NPI implementation started in the middle of this month.

Second, we used the same segmented linear regression model with autoregressive error to estimate the change in pneumococcal carriage rate and the number of RSV and influenza cases after NPI implementation. Third, to estimate the change in IPD associated with concomitant changes in pneumococcal carriage rate and the number of RSV and influenza cases, we fitted a quasi-Poisson regression model including seasonality by using harmonic terms (sines and cosines with 6-month and 12-month periods) to account for seasonality and RSV cases, influenza cases, and pneumococcal carriage rate as explanatory variables.⁷ We then estimated the change in IPD if RSV cases, influenza cases, or pneumococcal carriage rate had remained unchanged during the NPI period by using the same equation and set for influenza (eFigure 2 in the [Supplement](#)), RSV (eFigure 3 in the [Supplement](#)), and pneumococcal carriage that was used to measure patterns in the pre-NPI period. For each postintervention time point, we compared the forecasted IPD incidence, including the incidence of RSV, influenza, or pneumococcal carriage that remained unchanged, with the fitted IPD incidence. The estimated fraction of IPD change associated with pneumococcal carriage, RSV, or influenza was calculated as the incidence of IPD associated with carriage, RSV, or influenza divided by the fitted incidence of IPD during the NPI period.

In addition, we performed several sensitivity analyses. The first analysis used a quasi-Poisson regression model that included harmonic terms with only 12-month periods, and the second analysis used a quasi-Poisson regression model that included the number of pediatric emergency department visits for bronchiolitis rather than the percentage of RSV-positive tests over time.

All statistical tests were 2-sided, with $P = .05$ considered statistically significant. The validity of the segmented regression model was assessed by visual inspection of correlograms and analysis of residuals (eFigure 4 and eFigure 5 in the [Supplement](#)). All statistical analyses were performed using R software, version 4.0.3 (R Foundation for Statistical Computing), and Stata software, version 15.1 (StataCorp Ltd).

Results

Invasive Pneumococcal Disease Incidence

Between January 1, 2007, and March 31, 2021, 5113 children (median [IQR] age, 1.0 [0.6-4.0] years; 2959 boys [57.9%] and 2154 girls [42.1%]) with IPD were identified across all periods (including the transition periods). Data on race and ethnicity were not collected. There were 1445 IPD cases during the PCV7 period, 1031 during the early PCV13 period, 1987 during the late PCV13 period, and 194 during the NPI period. Additional characteristics are shown in [Table 1](#).

After NPI implementation, IPD incidence immediately decreased (−63%; 95% CI, −82% to −43%; $P < .001$) ([Figure 1A](#)). This IPD decrease was similar among children who had non-PCV13 serotypes with high disease potential (−63%; 95% CI, −77% to −48%; $P < .001$) and low disease potential (−53%; 95% CI, −70% to −35%; $P < .001$) ([Figure 1B and C](#)). We found a similar decrease in IPD among children with the 24F serotype (−68%; 95% CI, −84% to −52%; $P < .001$) (eFigure 6 in

the Supplement). During the study period, serotyping was performed for 4412 cases in the NRCP. During the NPI period, the most prevalent serotypes involved in IPD were 24F (14 children [17.3%]), 10A (11 children [13.6%]), 23B (9 children [11.1%]), 15B/C (7 children [8.6%]), and 11A (5 children [6.2%]). In comparison, during the late PCV13 period, the most prevalent serotypes were 24F (207 children [15.6%]), 15B/C (102 children [7.7%]), 10A (89 children [6.7%]), 12F (86 children [6.5%]), and 8 (74 children [5.6%]) (eTable 2 in the Supplement).

Influenza and RSV Cases

After NPI implementation, we estimated that the number of influenza cases decreased by 91% (95% CI, -74% to -97%; *P* < .001). The number of RSV cases decreased by 74% (95% CI, -55% to -85%; *P* < .001).

E coli Invasive Disease Incidence

Between January 1, 2007, and March 31, 2021, 13 234 children (median [IQR] age, 1.0 [0.2-5.0] years; 7374 boys [55.7%] and 5860 girls [44.3%]) with *E coli* invasive disease were identified in the PMSI database. We observed no significant change in *E coli* invasive disease after NPI implementation (-8%; 95% CI, -21% to 5%; *P* = .21) (eFigure 7 in the Supplement).

Pneumococcal Carriage

Between November 1, 2006, and April 30, 2021, 6831 healthy children (median [IQR] age, 1.5 [0.9-3.9] years; 3534 boys [51.7%] and 3297 girls [48.3%]) received a swab test. Of those, 2013 children (29.5%) across all periods (including the transition periods) carried *S pneumoniae*. The carriage rates were 356 of 1204 children (29.6%) during the PCV7 period, 412 of 1462 children (28.2%) during the early PCV13 period, 920 of 3118 children (29.5%) during the late PCV13 period, and 177 of 610 children (29.0%) during the NPI period. Additional characteristics are shown in Table 2. The pneumococcal carriage rate did not significantly change after NPI implementation (-12%; 95% CI, -37% to 12%; *P* = .32) (Figure 2A), nor did the carriage rates for non-PCV13 serotypes with high disease potential (-26%; 95% CI, -100% to 52%; *P* = .50) or low disease potential (-7%; 95% CI, -34% to 20%; *P* = .61) (Figure 2B and C), especially serotype 24F (-29%; 95% CI, -100% to 66%; *P* = .54) (eFigure 8 in the Supplement).

Table 1. Characteristics of Children With Invasive Pneumococcal Disease in the French Hospital Medical Information Database

Characteristic	Patients, No. (%)						
	PCV7 period ^a	Transition period 1 ^b	PCV13 period		Transition period 2 ^e	NPI period ^f	All study periods, including transition periods ^g
			Early ^c	Late ^d			
Total patients, No.	1445	416	1031	1987	40	194	5113
Age, median (IQR), y ^h	1.0 (0.6-4.0)	1.0 (0.7-4.0)	2.0 (0.6-5.0)	1.0 (0.6-4.0)	1.0 (0.5-2.0)	1.0 (0.6-3.0)	1.0 (0.6-4.0)
Sex							
Male	853 (59.0)	231 (55.5)	575 (55.8)	1170 (58.9)	22 (55.0)	108 (55.7)	2959 (57.9)
Female	592 (41.0)	185 (44.5)	456 (44.2)	817 (41.1)	18 (45.0)	86 (44.3)	2154 (42.1)
Meningitis	703 (48.7)	211 (50.7)	560 (54.3)	1029 (51.8)	23 (42.5)	72 (37.1)	2598 (50.8)
Bacteremia without meningitis	742 (51.3)	205 (48.3)	471 (45.7)	958 (48.2)	17 (57.5)	122 (62.9)	2515 (49.2)
Deaths	60 (4.2)	30 (7.2)	56 (5.4)	68 (3.4)	1 (2.5)	6 (3.1)	221 (4.3)

Abbreviations: NPI, nonpharmaceutical intervention; PCV7, 7-valent pneumococcal conjugate vaccine; PCV13, 13-valent pneumococcal conjugate vaccine.

^a The PCV7 period was from January 1, 2007, to May 31, 2010.

^b Transition period 1 was from June 1, 2010, to May 31, 2011.

^c The early PCV13 period was from June 1, 2011, to May 31, 2014.

^d The late PCV13 period was from June 1, 2014, to February 29, 2020.

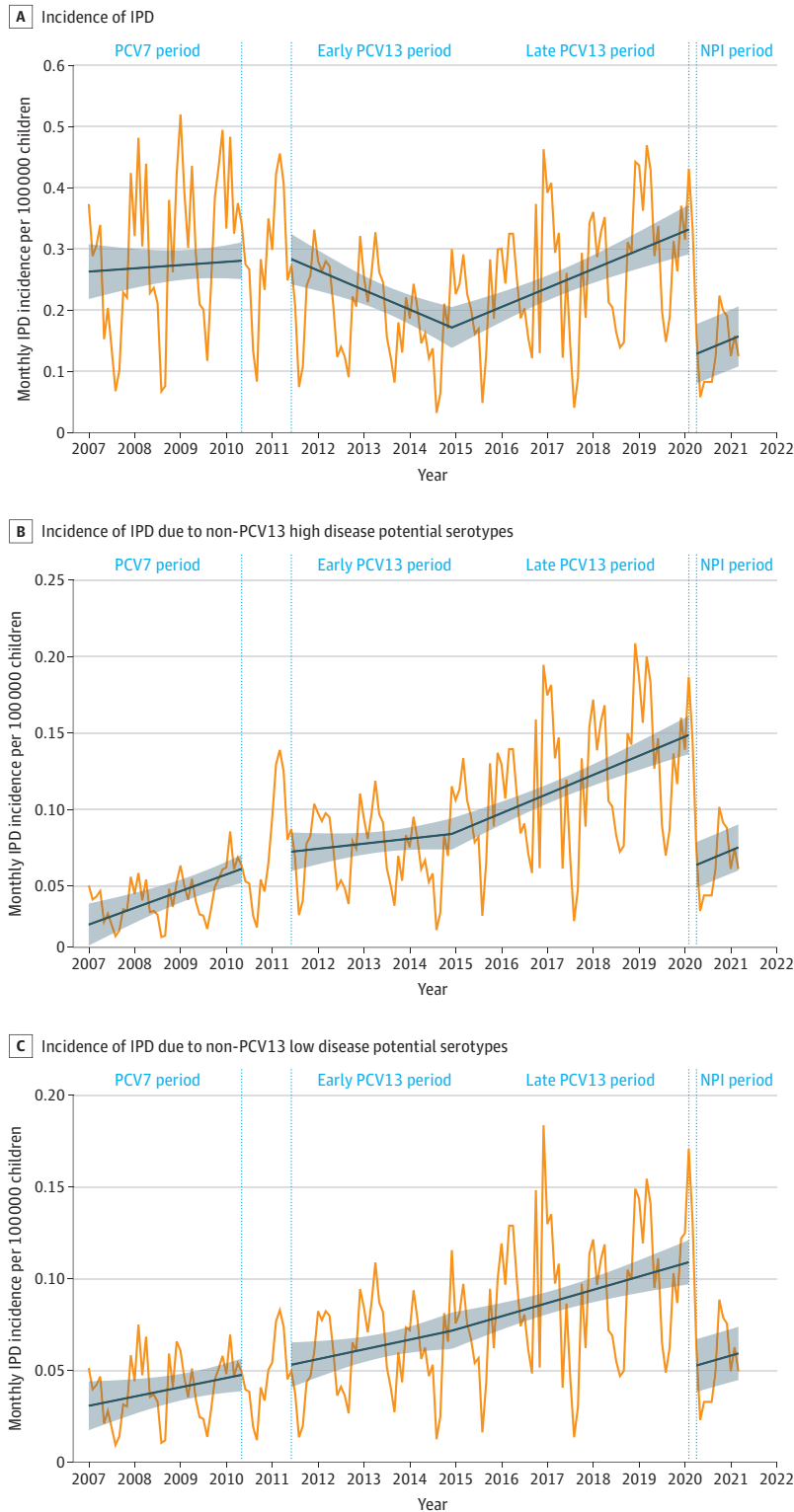
^e Transition period 2 was from March 1 to 31, 2020.

^f The NPI period was from April 1, 2020, to March 31, 2021.

^g Includes all periods from June 1, 2010, to May 31, 2021 (including transition periods).

^h Age was only available in rounded-down years for children older than 1 year in the French hospital medical information database (Programme de Medicalisation des Systèmes d'Information).

Figure 1. Association of Nonpharmaceutical Intervention (NPI) Implementation With Invasive Pneumococcal Disease (IPD) Incidence per 100 000 Children Younger Than 15 Years



The 7-valent pneumococcal conjugate vaccine (PCV7) period was from January 1, 2007, to May 31, 2010; the early 13-valent PCV (PCV13) period, June 1, 2011, to May 31, 2014; the late PCV13 period, June 1, 2014, to February 29, 2020; and the NPI period, April 1, 2020, to March 31, 2021. The blue slope lines were estimated using a segmented regression model. The shaded areas show the 95% CIs estimated using the segmented regression model. The vertical dotted lines show the transition period from PCV13 implementation (April 1, 2010, to May 31, 2011) to NPI implementation (March 1-31, 2020). A, A total of 5113 children were included in the analysis. B, IPD associated with non-PCV13 serotypes with high disease potential (including serotypes 8, 10A, 12F, 22F, 24F, 33F, and 38). A total of 1594 children were included in the analysis. C, IPD associated with non-PCV13 serotypes with low disease potential (including serotypes 6C, 11A, 15A, 15B/C, 17F, 19F, 21, 23A, 23B, 31, 34, 35B, 35F, and nontypeable). A total of 1363 children were included in the analysis.

Estimated Fraction of Change in Invasive Pneumococcal Disease

We estimated that 53% (95% CI, 28%-78%; $P < .001$) of the decrease in IPD during the NPI period was associated with the decrease in the number of influenza cases, and 40% (95% CI, 15%-65%; $P < .002$) of the decrease was associated with the decrease in the number of RSV cases. The decrease in IPD was not associated with the pneumococcal carriage rate, with carriage accounting for only 4% (95% CI, -7% to 15%; $P = .49$) of the decrease. We found similar results for IPD among children who had non-PCV13 serotypes with high disease potential (influenza: 53% [95% CI, 28%-78%; $P < .001$]; RSV: 41% [95% CI, 15%-66%; $P = .002$]; pneumococcal carriage: 0.4% [95% CI, -4% to 5%; $P = .86$]), non-PCV13 serotypes with low disease potential (influenza: 56% [95% CI, 30%-82%; $P < .001$]; RSV: 38% [95% CI, 12%-63%; $P = .004$]; pneumococcal carriage: 3% [95% CI, -5% to 11%; $P = .44$]), and serotype 24F (influenza: 54% [95% CI, 26%-81%; $P < .001$]; RSV: 37% [95% CI, 9%-65%; $P = .01$]; pneumococcal carriage: 2% [95% CI, -15% to 20%; $P = .77$]) (Table 3). Similar results were also found in the sensitivity analyses (eTable 3 in the Supplement).

Discussion

This cohort study assessed the association between pneumococcal carriage and IPD since the implementation of NPIs designed to reduce the spread of COVID-19. We observed a decrease in IPD incidence, with no significant concomitant change in overall pneumococcal carriage or in carriage of non-PCV13 serotypes with low and high disease potential, including serotype 24F. The main factor

Table 2. Characteristics of Healthy Children Included in the Pneumococcal Carriage Study^a

Characteristic	Patients, No. (%)						All study periods, including transition periods ^h
	PCV7 period ^b	Transition period 1 ^c	PCV13 period		Transition period 2 ^f	NPI period ^g	
			Early ^d	Late ^e			
Total patients, No.	1204	417	1462	3118	20	610	6831
Age, median (IQR), y	1.0 (0.7-1.4)	1.3 (0.8-2.0)	1.4 (0.9-2.9)	2 (1.0-6.0)	2.9 (1.2-7.6)	1.9 (0.9-6.1)	1.5 (0.9-3.9)
Sex							
Male	591 (49.1)	215 (51.5)	778 (53.2)	1607 (51.5)	10 (50.0)	333 (54.6)	3534 (51.7)
Female	613 (50.9)	202 (48.5)	684 (46.8)	1511 (48.5)	10 (50.0)	277 (45.4)	3297 (48.3)
Antibiotic prescription in the last 3 mo before inclusion	252 (20.9)	66 (15.8)	201 (13.7)	460 (14.8)	5 (25.0)	52 (8.5)	1036 (15.2)
Nasopharyngeal pneumococcal carriage	356 (29.6)	142 (34.0)	412 (28.2)	920 (29.5)	6 (30.0)	177 (29.0)	2013 (29.5)

Abbreviations: NPI, nonpharmaceutical intervention; PCV7, 7-valent pneumococcal conjugate vaccine; PCV13, 13-valent pneumococcal conjugate vaccine.

^a Includes data from analysis of entire database. For pneumococcal carriage, data were available until May 2021. For IPD, data were available until April 2021. For estimated fraction of change, both databases were used simultaneously, so only data until May 2021 were included.

^b The PCV7 period was from November 1, 2006, to May 31, 2010.

^c Transition period 1 was from June 1, 2010, to May 31, 2011.

^d The early PCV13 period was from June 1, 2011, to May 31, 2014.

^e The late PCV13 period was from June 1, 2014, to February 29, 2020.

^f Transition period 2 was from March 1 to 31, 2020.

^g The NPI period was from April 1, 2020, to April 30, 2021.

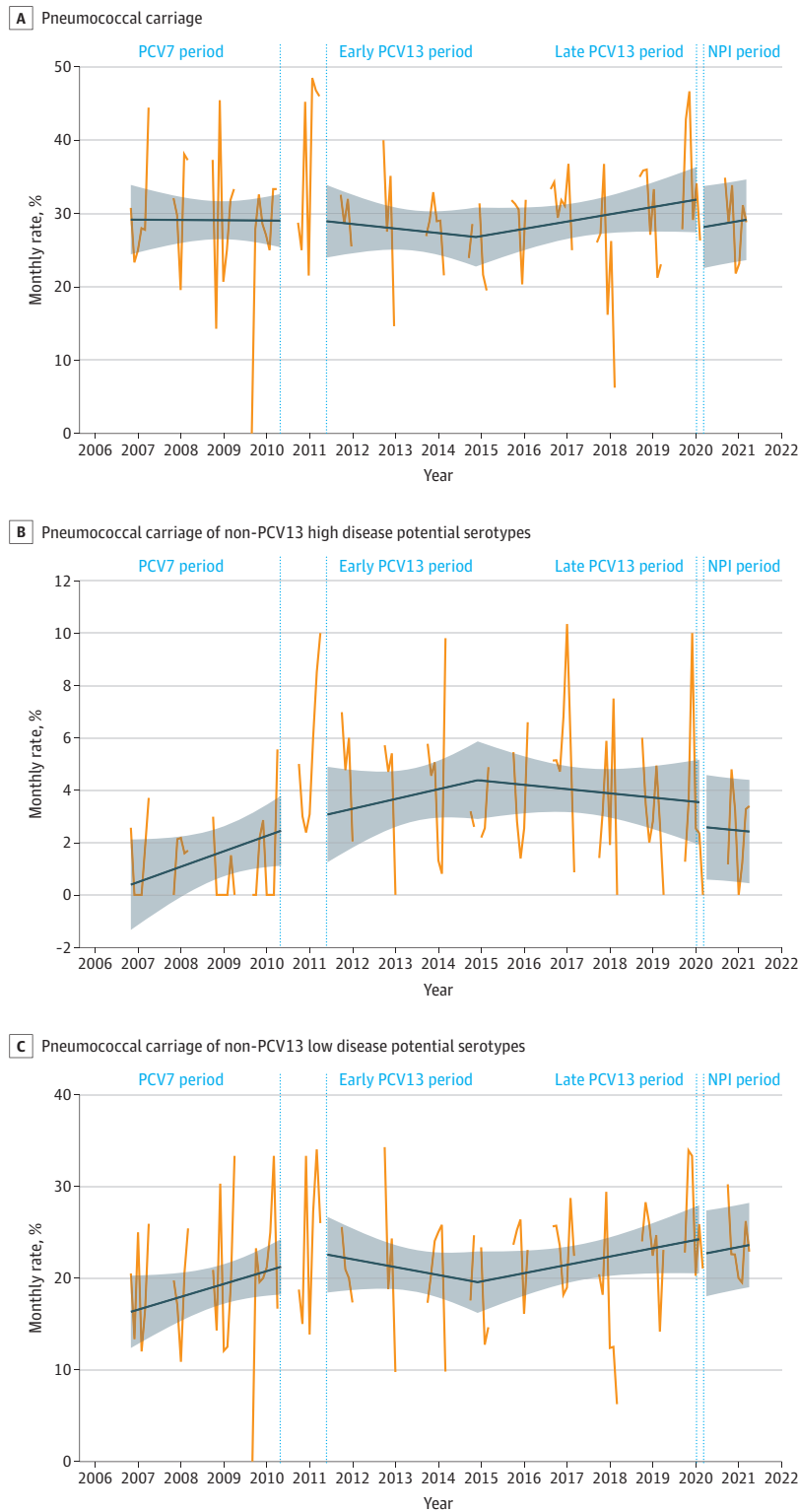
^h Includes all periods from June 1, 2010, to April 30, 2021 (including transition periods).

Table 3. Estimated Fraction of Change in IPD Associated With Changes in Influenza, RSV, and Pneumococcal Carriage After Implementation of Nonpharmaceutical Interventions

Serotype	Estimated fraction of IPD					
	Influenza		RSV		Pneumococcal carriage	
	% (95% CI)	P value	% (95% CI)	P value	% (95% CI)	P value
Overall IPD	53 (28 to 78)	<.001	40 (15 to 65)	.002	4 (-7 to 15)	.49
IPD associated with non-PCV13 serotype						
High disease potential	53 (28 to 78)	<.001	41 (15 to 66)	.002	0.4 (-4 to 5)	.86
Low disease potential	56 (30 to 82)	<.001	38 (12 to 63)	.004	3 (-5 to 11)	.44
IPD associated with 24F serotype	54 (26 to 81)	<.001	37 (9 to 65)	.01	2 (-15 to 20)	.77

Abbreviations: IPD, invasive pneumococcal disease; PCV13, 13-valent pneumococcal conjugate vaccine; RSV, respiratory syncytial virus.

Figure 2. Association of Nonpharmaceutical Intervention (NPI) Implementation With Pneumococcal Carriage in Healthy Children



A total of 6831 children were healthy during the study period. The 7-valent pneumococcal conjugate vaccine (PCV7) period was from January 1, 2007, to May 31, 2010; the early 13-valent PCV (PCV13) period, June 1, 2011, to May 31, 2014; the late PCV13 period, June 1, 2014, to February 29, 2020; and the NPI period, April 1, 2020, to March 31, 2021. The blue slope lines were estimated using a segmented regression model. The shaded areas show the 95% CIs estimated using the segmented regression model. The vertical dotted lines show the transition period from PCV13 implementation (April 1, 2010, to May 31, 2011) to NPI implementation (March 1-31, 2020). A, A total of 2013 children were included in the analysis. B, Pneumococcal carriage rates of non-PCV13 serotypes with high disease potential (including serotypes 8, 10A, 12F, 22F, 24F, 33F, and 38). A total of 225 children were included in the analysis. C, Pneumococcal carriage rates of non-PCV13 serotypes with low disease potential (including serotypes 6C, 11A, 15A, 15B/C, 17F, 19F, 21, 23A, 23B, 31, 34, 35B, 35F, and nontypeable). A total of 1455 children were included in the analysis.

associated with the decrease in IPD incidence was the decrease in the number of influenza and RSV cases.

Capsular polysaccharides, which define pneumococcus serotypes, are the main factors associated with the ability to cause disease.²⁹ The disease potential of a serotype was thought to be subject to limited variation over time, which led a simulation study³⁰ to predict a reduction in pneumococcal carriage and IPD incidence after NPI implementation. Using interrupted time series models, we estimated that approximately 90% of the decrease in IPD incidence was associated with decreases in the number of RSV and influenza cases, with no role for pneumococcal carriage. Taken together, these findings suggest that the disease potential of pneumococcal serotypes may be associated with changes in RSV and influenza incidence, both for serotypes with historically high and low disease potential.

For the past 20 years, Israel and France have shared a similar surveillance network for pneumococcal carriage,^{18,19,31} which has allowed for the study of pneumococcal carriage and IPD over time. A recent study from Israel³² suggested that pneumococcal carriage rates remained stable during NPI implementation, whereas IPD case numbers substantially decreased during the same period, which was consistent with our results. The IPD reduction was temporally associated with decreases in RSV, influenza, and human metapneumovirus cases, whereas rates of rhinovirus, adenovirus, and parainfluenza cases remained stable.³² Thus, epidemiological studies^{4,5} reporting an association between pneumococcal carriage and IPD have assumed that respiratory viral infection cases remain stable, which may not be true in the context of human interventions. Data from the present study suggest that assessing the impact of further public health interventions, such as next-generation PCV implementation, requires both surveillance of pneumococcal carriage and IPD as well as viral epidemiological factors to fully understand the mechanisms underlying changes in IPD incidence.

In our study, the pneumococcal nasopharyngeal carriage rate remained stable despite unprecedented mitigation measures.¹¹ Several points should be considered. First, NPIs were mainly focused on adults and children older than 6 years, in whom pneumococcal carriage is less frequent.³³ Unlike in many other countries, the total duration of daycare center and kindergarten closures in France was short during the NPI period.³⁴ This brief closure may have allowed for pneumococcal transmission between young children. However, the incidence of other childhood viral infections, such as varicella, was also substantially reduced in France over the same period, which suggests that NPI implementation also altered contact and transmission between young children.³⁵ Second, this stable pneumococcal carriage rate may be a consequence of increased carriage duration combined with decreased transmission. An important competition exists between pneumococcal serotypes, and colonization by a serotype may lead to clearance of a preexisting colonizer.³⁶ Thus, in a context of reduced contact between children, serotypes may be less challenged by other serotypes, thereby increasing the carriage duration. If specific studies are required to explore this hypothesis, our results highlight that carriage of *S pneumoniae* is unavoidable in young children, with the virus maintaining an ecological niche that remains occupied despite unprecedented human interventions. This finding has implications for future interventions, such as PCV implementation, that aim to modify pneumococcal carriage and provides new insight into the complex phenomenon of serotype replacement in carriage.

The substantial decrease in viral infections during NPI implementation has led to the immune debt hypothesis, which suggests that reduced natural immunity of the population to respiratory pathogens after NPIs may predispose to larger outbreaks in the future.^{13,35} This suggestion has been supported by findings from a simulation study³⁷ and may be confirmed by the recent epidemiological patterns observed in several countries.¹³ Our findings regarding the unchanged ecological niche of *S pneumoniae* suggest no decrease in natural immunity to pneumococcal serotypes. However, given the substantial consequences of RSV and influenza for IPD changes that we highlighted, a larger influenza or RSV outbreak may produce an increase in IPD incidence after relaxation of NPIs, despite unchanged pneumococcal carriage rates.

Limitations

This study has several limitations. First, our model relies on temporal association, and we cannot establish a causative relationship. Some previous studies using databases^{7,8,38} have supported the role of preceding respiratory viral infection in the occurrence of IPD. Other factors, such as host,³⁹ meteorological,⁴⁰ or human activity factors, which have also changed after NPI implementation, were not included in this study. Second, we only assessed the fraction of IPD change associated with concomitant changes in RSV and influenza cases because they have historically been suspected to trigger pneumococcal infections.^{7,8} Other respiratory viruses, such as human metapneumovirus and parainfluenza, may also play a role. It has been reported that the rhinovirus positivity rate remained stable in France after NPI implementation.⁴¹ Other respiratory viruses are not monitored in France,⁴² and their epidemiological activity could not be included in our model.

Third, the children included in our carriage study were young (median [IQR] age, 1.5 [0.9-3.9] years) and may have been less likely than older children to experience consequences from the NPIs implemented in France. We cannot exclude the possibility that the pneumococcal carriage rate changed in older children. However, associations between pneumococcal carriage in children younger than 5 years, children aged 5 to 17 years, and adults³³ may play a marginal role in this ecological niche because the carriage rate is less than 10% in this population. Furthermore, pneumococcal serotype changes over time were not assessed individually, and we cannot exclude the possibility that a decrease in acquisition of new pneumococcal serotypes may be involved in the decrease in IPD incidence. Fourth, in our main model, RSV cases were based on the proportion of RSV-positive tests, and testing policies may have changed during the COVID-19 pandemic. However, our sensitivity analysis using visits to bronchiolitis-related pediatric emergency departments as a proxy for RSV cases yielded similar results. Other European countries reported similar findings, with a near absence of influenza cases⁴³ and a delayed and reduced RSV epidemic.⁴⁴

Fifth, the PMSI database does not include data on pneumococcal serotypes. Nevertheless, most of the strains isolated from IPD in children were sent for analysis to the NRCP even after NPI implementation. Sixth, the carriage study used only standard culture methods to identify pneumococci, but PCR tests may be more sensitive.⁴⁵ However, we used the same microbiological methods over the study period. Seventh, we cannot exclude the possibility that a fraction of the decrease in IPD incidence may be associated with an avoidance of the pediatric emergency department or a change in criteria for hospital admission. We observed no change in *E coli* invasive disease incidence (used as a control outcome) after NPI implementation, and a similar decrease in IPD incidence¹⁴ has been reported globally.

Conclusions

In this cohort study, a decrease in IPD incidence was found among children in France after NPI implementation during the COVID-19 pandemic. This decrease in IPD was associated with decreases in the number of RSV and influenza cases; however, the pneumococcal carriage rate remained largely unchanged. Several RSV vaccines and methods of immunoprophylaxis for RSV infections are currently being developed, and influenza vaccines are available. The findings of this study suggest that targeting these viral pathogens may be able to prevent a large proportion of IPD cases without creating gaps in the pneumococcal ecological niche, which is the main limitation of current PCVs.

ARTICLE INFORMATION

Accepted for Publication: April 21, 2022.

Published: June 28, 2022. doi:10.1001/jamanetworkopen.2022.18959

Open Access: This is an open access article distributed under the terms of the [CC-BY License](#). © 2022 Rybak A et al. *JAMA Network Open*.

Corresponding Author: Naim Ouldali, PhD, Assistance Publique–Hôpitaux de Paris, Department of General Pediatrics, Pediatric Infectious Disease and Internal Medicine, Robert Debré University Hospital, Université de Paris, 48 Bd Serrurier, 75019 Paris, France (naim.ouldali@aphp.fr).

Author Affiliations: Association Clinique et Thérapeutique Infantile du Val-de-Marne, Créteil, France (Rybak, Levy, Auvrignon, Béchet, Cohen, Ouldali); Association Française de Pédiatrie Ambulatoire, Saint-Germain-en-Laye, France (Rybak, Levy, Gembara, Béchet, Cohen); Assistance Publique–Hôpitaux de Paris, Service d'Accueil des Urgences Pédiatriques, Université de Paris, Paris, France (Rybak); Assistance Publique–Hôpitaux de Paris, Robert Debré University Hospital, Épidémiologie Clinique–Évaluation Économique Appliqué aux Populations Vulnérables, Institut National de la Santé et de la Recherche Médicale, Unité Mixte de Recherche 1123, Université de Paris, Paris, France (Rybak, Assad, Michel, Kaguelidou, Faye, Ouldali); Université Paris Est, Institut Mondor de Recherche Biomédicale, Groupe d'Etude de Maladies Infectieuses Néonatales et Infantiles, Créteil, France (Levy, Cohen, Varon); Groupe de Pathologie Infectieuse Pédiatrique, Paris, France (Levy, Angoulvant, Faye, Cohen); Clinical Research Center, Centre Hospitalier Intercommunal de Créteil, Créteil, France (Levy, Cohen); Institut National de la Santé et de la Recherche Médicale, Centre de Recherche des Cordeliers, Unité Mixte de Recherche Scientifique 1138, Université de Paris, Paris, France (Angoulvant); Assistance Publique–Hôpitaux de Paris, Service de Pédiatrie Générale, Robert Debré University Hospital, Université de Paris, Paris, France (Angoulvant, Assad, Faye, Ouldali); Direction des Maladies Infectieuses, Santé Publique France, Saint-Maurice, France (Danis, Vaux, Levy-Bruhl); Centre National de Référence des Infections Respiratoires, Institut Pasteur, Paris, France (van der Werf); Assistance Publique–Hôpitaux de Paris, Service de Microbiologie, Robert Debré University Hospital, Université de Paris, Paris, France (Bonacorsi); Infection Antimicrobials Modelling Evolution, Institut National de la Santé et de la Recherche Médicale, Unité Mixte de Recherche 1137, Université de Paris, Paris, France (Bonacorsi); Service de Pédiatrie Médicale, Centre Hospitalier Universitaire Caen-Normandie, Caen, France (Assad); Chirurgie Générale, Digestive et de l'Obésité, Centre Hospitalier Intercommunal de Créteil, Créteil, France (Lazzati); Institut National de la Santé et de la Recherche Médicale, L'Institut Mondor de Recherche Biomédicale, Unité 955, Université Paris-Est Créteil, Créteil, France (Lazzati); Assistance Publique–Hôpitaux de Paris, Centre d'Investigation Clinique 1426, Robert Debré University Hospital, Université de Paris, Paris, France (Kaguelidou); Néonatalogie et Réanimation Néonatale, Centre Hospitalier Intercommunal de Créteil, Créteil, France (Cohen); Microbiologie et Centre National de Référence du Pneumocoque, Centre Hospitalier Intercommunal de Créteil, Créteil, France (Varon); Service des Maladies Infectieuses Pédiatriques, Centre Hospitalier Universitaire Sainte-Justine, Université de Montréal, Québec, Canada (Ouldali).

Author Contributions: Drs Rybak and Ouldali had full access to all of the data in the study and take responsibility for the integrity of the data and the accuracy of the data analysis.

Concept and design: Rybak, Levy, Angoulvant, Levy-Bruhl, Faye, Cohen, Ouldali.

Acquisition, analysis, or interpretation of data: Rybak, Levy, Angoulvant, Auvrignon, Gembara, Danis, Vaux, van der Werf, Béchet, Bonacorsi, Assad, Lazzati, Michel, Kaguelidou, Varon, Ouldali.

Drafting of the manuscript: Rybak, Gembara, Béchet, Cohen.

Critical revision of the manuscript for important intellectual content: Rybak, Levy, Angoulvant, Auvrignon, Danis, Vaux, Levy-Bruhl, van der Werf, Bonacorsi, Assad, Lazzati, Michel, Kaguelidou, Faye, Varon, Ouldali.

Statistical analysis: Rybak, Angoulvant, Danis, Béchet, Assad, Ouldali.

Obtained funding: Levy, Cohen.

Administrative, technical, or material support: Levy, Gembara, Béchet, Assad, Lazzati, Michel, Kaguelidou, Varon.

Supervision: Levy, Angoulvant, Danis, Michel, Kaguelidou, Varon, Ouldali.

Conflict of Interest Disclosures: Dr Rybak reported receiving grants from the Association Française de Pédiatrie Ambulatoire and travel funding from AstraZeneca and Pfizer outside the submitted work. Dr Levy reported receiving grants from Pfizer (via ACTIV) during the conduct of the study; grants from GlaxoSmithKline, Merck Sharp & Dohme, Pfizer, and Sanofi; personal fees from Merck Sharp & Dohme and Pfizer; and nonfinancial support from Merck Sharp & Dohme and Pfizer outside the submitted work. Dr Angoulvant reported receiving grants from Pfizer outside the submitted work. Dr van der Werf reported receiving grants from Santé Publique France during the conduct of the study and a provisional patent on SARS-CoV-2 diagnostics and a research grant from Sanofi Pasteur on an unrelated subject outside the submitted work. Dr Assad reported receiving travel funding from Bastide le Confort Médical and Novartis outside the submitted work. Dr Lazzati reported receiving personal fees from Johnson & Johnson, Medtronic, and W. L. Gore & Associates outside the submitted work. Dr Cohen reported receiving grants (via ACTIV) and personal fees from GlaxoSmithKline, Merck Sharp & Dohme, Pfizer, and Sanofi outside the submitted work. Dr Varon reported receiving grants (via the National Reference Center for Pneumococci, Centre Hospitalier Intercommunal de Créteil) from the Santé Publique France during the conduct of the study and grants (via the National Reference Center for Pneumococci, Centre Hospitalier Intercommunal de

Créteil) from Merck Sharp & Dohme and Pfizer outside the submitted work. Dr Ouldali reported receiving travel funding from GlaxoSmithKline, Pfizer, and Sanofi outside the submitted work. No other disclosures were reported.

Funding/Support: This work was supported by funding from Pfizer (via ACTIV) for the pneumococcal carriage study, funding from the French Institute for Public Health Surveillance (via the National Reference Center for Pneumococci) for the invasive pneumococcal disease study, and a 2021-2023 fellowship award from the European Society of Pediatric Infectious Diseases (Dr Ouldali).

Role of the Funder/Sponsor: The funding organizations had no role in the design and conduct of the study; collection, management, analysis, and interpretation of the data; preparation, review, or approval of the manuscript; and decision to submit the manuscript for publication.

Additional Contributions: We thank the following team members of ACTIV (Créteil, France) for their technical assistance: Michel Bouché, MD, Isabelle Ramay, Marine Borg, Aurore Prieur, and Elsa Sobral. We also thank the following team members from the Laboratory of Medical Biology and the National Reference Centre for Pneumococci, Intercommunal Hospital of Créteil (Créteil, France) for their technical assistance: Cécile Culeux, Assiya El Mniaï, and Jameel Batah, MD. We thank all of the following pediatricians (affiliated with ACTIV) who participated in the carriage study: Catherine Abt-Nord, MD, Marie-José Aim-Mille, MD, Marie-Hélène Akou'ou, MD, Daniel Allain, MD, Michel Amzallag, MD, Patrick André, MD, Marie-Constance Anthoine-Milhomme, MD, Isabelle Aubier, MD, Anne Auvrignon, Pierre Bakhache, MD, Joelle Baron, MD, Béatrice Baszanger, MD, Christophe Batard, MD, Gérard Beley, MD, Mohammed Benani, MD, Catherine Bensoussan-Ambacher, MD, Eric Billard, MD, Louis Billet, MD, Jean-Paul Blanc, MD, Marie-José Bodin, MD, Eric Boez, MD, Bernard Bohe, MD, Jacky Bouglé, MD, Fabrice Bouillot, MD, Bénédicte Broussin, MD, Jean-Louis Cabos, MD, Fabienne Cahn-Sellem, MD, Patrice Camier, MD, Françoise Ceccato, MD, Anne Chevê, MD, Daniele Clavel, MD, Claire Claverie, MD, Robert Cohen, MD, Lucette Coicadan, MD, François Corrad, MD, Liliane Cret, MD, Gwenaëlle D'Acremont, MD, Nadia D'Ovidio-Panis, MD, Véronique Dagrenat, MD, Brigitte de Brito, MD, Françoise De Grenier, MD, Patrice Deberdt, MD, Isabelle Defives, MD, Anne Delatour, MD, Jean-François Delobbe, MD, Véronique Derkx, MD, Roxane Desandes, MD, Véronique Desvignes, MD, Michel Dogneton, MD, Isabelle Donikian-Pujol, MD, Catherine Douer-Fernando, MD, Michel Dubosc, MD, Jocelyne Ducellier, MD, Catherine Dumont, MD, Annie Elbez, MD, Jacques Elbhar, MD, Nadim Elkhoury, MD, Catherine Ferté-Devin, MD, Jean-Michel Fiorini, MD, Denis Garel, MD, Jean-Luc Gasnier, MD, Annabella Gasser, MD, Béatrice Gaudin, MD, Nathalie Gelbert-Baudino, MD, Piotr Gembara, MD, Catherine Georgeot, MD, Martine Gerardin, MD, Marc Giorno, MD, Marie Goldrey, MD, Stéphanie Gorde-Grosjean, MD, René Gorge, MD, Juliette Gosselin, MD, Cécile Guiheneuf, MD, Jean-Louis Guillon, MD, Jean-François Hassan, MD, André Hayat, MD, Henri Hollenberg, MD, Pascale Hugué, MD, Priscille Hugot, MD, Michel Hunin, MD, Ara Kalindjian, MD, Kai Kassmann, MD, Zalfa Klink, MD, Marc Koskas, MD, Chantal Lastmann-Lahmi, MD, Fanny Le Mouel, MD, Hélène Le Scornet, MD, Marie-Claude Lemarchand, MD, Jean-Claude Lévêque, MD, Joel Levy, MD, Marc Levy, MD, Daniel Livon, MD, Murielle Louvel, MD, Nassira Maamri-Belaroussi, MD, Christine Magendie, MD, Ilda Martins, MD, Marie-Odile Mercier-Oger, MD, Claude Messica, MD, Françoise Meunier, MD, Anne-Sylvestre Michot, MD, Jacques Miclot, MD, Pascaline Migault, MD, Isabelle Nave, MD, Michel Navel, MD, Jean-François Nicolas, MD, Marie-Odile Oger, MD, Joseph Ohayon, MD, Jean-Claude Oilleau, MD, Annie Pappo, MD, France Paratte, MD, Jacques Peguet, MD, Christian Perrin, MD, Corinne Petit, MD, Brigitte Pinçant, MD, Odile Pinard, MD, Anne Piollet, MD, Jean-François Pujol, MD, Marie-Thérèse Pujol, MD, Nathalie Ramos, MD, Sophie Ravilly, MD, Yves Regnard, MD, Marc Robert, MD, Olivier Romain, MD, Stéphanie Romano, MD, Marie-Charlotte Rondeau, MD, Gaëlle Roques, MD, Bechara Saade, MD, Jean-François Salaün, MD, Catherine Salinier-Rolland, MD, Catherine Schlemmer, MD, Aurélie Sellam, MD, Elisa Seror, MD, Geneviève Sivel, MD, David Somerville, MD, Nathalie Temam-Basse, MD, Emilie Thomas, MD, Jean-Michel Thiron, MD, François Thollot, MD, Jonathan Toledano, MD, Robert Toutou, MD, Catherine Turberg-Romain, MD, Josette Vaugeois, MD, François Vie Le Sage, MD, Jean-Luc Vuillemin, MD, Andreas Werner, MD, Rose Wisnewsy, MD, Alain Wollner, MD, Claudie Wollner, MD, and Christophe Ythier, MD. The investigators of the carriage study received financial compensation for each swab test performed. We thank all of the microbiology laboratories that participated in invasive pneumococcal disease surveillance (more than 400 laboratories throughout France, for which no compensation was provided). We thank Laura Smales, MSW, of BioMedEditing (Canada) for assistance with language editing (compensation provided). Dr Rybak personally thanks Olivia Nguyen, MD, of Hôpital Saint-Joseph (Paris, France) for her technical support (no compensation provided).

REFERENCES

1. Wahl B, O'Brien KL, Greenbaum A, et al. Burden of *Streptococcus pneumoniae* and *Haemophilus influenzae* type B disease in children in the era of conjugate vaccines: global, regional, and national estimates for 2000-15. *Lancet Glob Health*. 2018;6(7):e744-e757. doi:10.1016/S2214-109X(18)30247-X
2. Simell B, Auranen K, Käyhty H, Goldblatt D, Dagan R, O'Brien KL; Pneumococcal Carriage Group. The fundamental link between pneumococcal carriage and disease. *Expert Rev Vaccines*. 2012;11(7):841-855. doi:10.1586/erv.12.53

3. Bogaert D, De Groot R, Hermans PWM. *Streptococcus pneumoniae* colonisation: the key to pneumococcal disease. *Lancet Infect Dis*. 2004;4(3):144-154. doi:10.1016/S1473-3099(04)00938-7
4. Balsells E, Dagan R, Yildirim I, et al. The relative invasive disease potential of *Streptococcus pneumoniae* among children after PCV introduction: a systematic review and meta-analysis. *J Infect*. 2018;77(5):368-378. doi:10.1016/j.jinf.2018.06.004
5. Cohen R, Levy C, Ouldali N, et al. Invasive disease potential of pneumococcal serotypes in children after PCV13 implementation. *Clin Infect Dis*. 2021;72(8):1453-1456. doi:10.1093/cid/ciaa917
6. Weinberger DM, Bruden DT, Grant LR, et al. Using pneumococcal carriage data to monitor postvaccination changes in invasive disease. *Am J Epidemiol*. 2013;178(9):1488-1495. doi:10.1093/aje/kwt156
7. Weinberger DM, Klugman KP, Steiner CA, Simonsen L, Viboud C. Association between respiratory syncytial virus activity and pneumococcal disease in infants: a time series analysis of US hospitalization data. *PLoS Med*. 2015;12(1):e1001776. doi:10.1371/journal.pmed.1001776
8. Hernández S, Muñoz-Almagro C, Ciruela P, et al. Invasive pneumococcal disease and influenza activity in a pediatric population: impact of PCV13 vaccination in pandemic and nonpandemic influenza periods. *J Clin Microbiol*. 2019;57(8):e00363-19. doi:10.1128/JCM.00363-19
9. Greenberg D, Givon-Lavi N, Faingelernt Y, et al. Nasopharyngeal pneumococcal carriage during childhood community-acquired alveolar pneumonia: relationship between specific serotypes and coinfecting viruses. *J Infect Dis*. 2017;215(7):1111-1116. doi:10.1093/infdis/jiw613
10. Weinberger DM, Harboe ZB, Viboud C, et al. Serotype-specific effect of influenza on adult invasive pneumococcal pneumonia. *J Infect Dis*. 2013;208(8):1274-1280. doi:10.1093/infdis/jit375
11. European Centre for Disease Prevention and Control. Data on country response measures to COVID-19. European Centre for Disease Prevention and Control; 2021. Accessed April 4, 2021. <https://www.ecdc.europa.eu/en/publications-data/download-data-response-measures-covid-19>
12. Angoulvant F, Ouldali N, Yang DD, et al. Coronavirus disease 2019 pandemic: impact caused by school closure and national lockdown on pediatric visits and admissions for viral and nonviral infections—a time series analysis. *Clin Infect Dis*. 2021;72(2):319-322. doi:10.1093/cid/ciaa710
13. Cohen R, Pettoello-Mantovani M, Somekh E, Levy C. European pediatric societies call for an implementation of regular vaccination programs to contrast the immune debt associated to COVID-19 pandemic in children. *J Pediatr*. 2022;242:260-261. doi:10.1016/j.jpeds.2021.11.061
14. Brueggemann AB, Jansen van Rensburg MJ, Shaw D, et al. Changes in the incidence of invasive disease due to *Streptococcus pneumoniae*, *Haemophilus influenzae*, and *Neisseria meningitidis* during the COVID-19 pandemic in 26 countries and territories in the Invasive Respiratory Infection Surveillance Initiative: a prospective analysis of surveillance data. *Lancet Digit Health*. 2021;3(6):e360-e370. doi:10.1016/S2589-7500(21)00077-7
15. Tsuda K, Tanimoto T, Mori J, Kosugi K, Komatsu T. Targeted-release budesonide therapy for IgA nephropathy. *Lancet*. 2017;390(10113):2625. doi:10.1016/S0140-6736(17)32145-1
16. Institut National de la Statistique et des Etudes Economiques. Population estimate as of January 1, 2021. Accessed June 15, 2021. <https://www.insee.fr/fr/statistiques/1893198>
17. Observatoire du portage rhinopharyngé de *Streptococcus pneumoniae* (Sp) chez des nourrissons ayant une otite moyenne aiguë (OMA) et sains—étude ancillaire sur la détection des porteurs de *E Coli* BLSE. ClinicalTrials.gov identifier: NCT04460313. Updated March 22, 2021. Accessed May 23, 2022. <https://clinicaltrials.gov/ct2/show/NCT04460313?term=NCT04460313&draw=2&rank=1>
18. Rybak A, Levy C, Bonacorsi S, et al. Antibiotic resistance of potential otopathogens isolated from nasopharyngeal flora of children with acute otitis media before, during and after pneumococcal conjugate vaccines implementation. *Pediatr Infect Dis J*. 2018;37(3):e72-e78. doi:10.1097/INF.0000000000001862
19. Ouldali N, Cohen R, Levy C, et al. Pneumococcal susceptibility to antibiotics in carriage: a 17 year time series analysis of the adaptive evolution of non-vaccine emerging serotypes to a new selective pressure environment. *J Antimicrob Chemother*. 2019;74(10):3077-3086. doi:10.1093/jac/dkz281
20. Ouldali N, Levy C, Minodier P, et al. Long-term association of 13-valent pneumococcal conjugate vaccine implementation with rates of community-acquired pneumonia in children. *JAMA Pediatr*. 2019;173(4):362-370. doi:10.1001/jamapediatrics.2018.5273
21. Santé Publique France. Réseau OSCOUR. Santé Publique France. November 25, 2021. Accessed March 23, 2022. <https://www.santepubliquefrance.fr/surveillance-syndromique-sursaud-R/reseau-oscour-R>
22. Centre National de Référence des Infections Respiratoires. Rapport annuel d'activité—saison 2017-2018. Centre National de Référence des Infections Respiratoires; 2018. Accessed May 23, 2022. <https://www.pasteur.fr/fr/file/29356/download>

23. Ouldali N, Varon E, Levy C, et al. Invasive pneumococcal disease incidence in children and adults in France during the pneumococcal conjugate vaccine era: an interrupted time-series analysis of data from a 17-year national prospective surveillance study. *Lancet Infect Dis*. 2021;21(1):137-147. doi:10.1016/S1473-3099(20)30165-1
24. van Selm S, van Cann LM, Kolkman MAB, van der Zeijst BAM, van Putten JPM. Genetic basis for the structural difference between *Streptococcus pneumoniae* serotype 15B and 15C capsular polysaccharides. *Infect Immun*. 2003;71(11):6192-6198. doi:10.1128/IAI.71.11.6192-6198.2003
25. Santé Publique France. Bulletin de Santé Publique—vaccination. Santé Publique France; May 2021. Accessed July 13, 2021. https://professionnels.vaccination-info-service.fr/var/vis/storage/original/application/download/BSP_nat_vaccination_180521.pdf#:~:text=Chez%20les%20nourissons%20de%20la,ceux%20de%20la%20cohort%202018
26. Jandoc R, Burden AM, Mamdani M, Lévesque LE, Cadarette SM. Interrupted time series analysis in drug utilization research is increasing: systematic review and recommendations. *J Clin Epidemiol*. 2015;68(8):950-956. doi:10.1016/j.jclinepi.2014.12.018
27. Kontopantelis E, Doran T, Springate DA, Buchan I, Reeves D. Regression based quasi-experimental approach when randomisation is not an option: interrupted time series analysis. *BMJ*. 2015;350:h2750. doi:10.1136/bmj.h2750
28. Wagner AK, Soumerai SB, Zhang F, Ross-Degnan D. Segmented regression analysis of interrupted time series studies in medication use research. *J Clin Pharm Ther*. 2002;27(4):299-309. doi:10.1046/j.1365-2710.2002.00430.x
29. Weiser JN, Ferreira DM, Paton JC. *Streptococcus pneumoniae*: transmission, colonization and invasion. *Nat Rev Microbiol*. 2018;16(6):355-367. doi:10.1038/s41579-018-0001-8
30. Choi YH, Miller E. Impact of COVID-19 social distancing measures on future incidence of invasive pneumococcal disease in England and Wales: a mathematical modelling study. *BMJ Open*. 2021;11(9):e045380. doi:10.1136/bmjopen-2020-045380
31. Faingelernt Y, Dagan R, Givon-Lavi N, Ben-Shimol S, Bar-Ziv J, Greenberg D. Nasopharyngeal carriage of invasive pneumococcal serotypes during childhood community-acquired alveolar pneumonia is associated with specific clinical presentation. *J Infect Dis*. 2020;221(5):812-819. doi:10.1093/infdis/jiz513
32. Danino D, Ben-Shimol S, Van Der Beek BA, et al. Decline in pneumococcal disease in young children during the COVID-19 pandemic in Israel associated with suppression of seasonal respiratory viruses, despite persistent pneumococcal carriage: a prospective cohort study. *Clin Infect Dis*. 2021;ciab1014. doi:10.1093/cid/ciab1014
33. Le Polain de Waroux O, Flasche S, Prieto-Merino D, Edmunds WJ. Age-dependent prevalence of nasopharyngeal carriage of *Streptococcus pneumoniae* before conjugate vaccine introduction: a prediction model based on a meta-analysis. *PLoS One*. 2014;9(1):e86136. doi:10.1371/journal.pone.0086136
34. Global Education Coalition. Total duration of school closures. UNESCO; 2021. Accessed October 21, 2021. <https://en.unesco.org/covid19/educationresponse#durationofschoolclosures>
35. Cohen R, Ashman M, Taha MK, et al. Pediatric Infectious Disease Group (GPIP) position paper on the immune debt of the COVID-19 pandemic in childhood, how can we fill the immunity gap? *Infect Dis Now*. 2021;51(5):418-423. doi:10.1016/j.idnow.2021.05.004
36. Auranen K, Mehtälä J, Tanskanen A, Kaltoft MS. Between-strain competition in acquisition and clearance of pneumococcal carriage—epidemiologic evidence from a longitudinal study of day-care children. *Am J Epidemiol*. 2010;171(2):169-176. doi:10.1093/aje/kwp351
37. Baker RE, Park SW, Yang W, Vecchi GA, Metcalf CJE, Grenfell BT. The impact of COVID-19 nonpharmaceutical interventions on the future dynamics of endemic infections. *Proc Natl Acad Sci U S A*. 2020;117(48):30547-30553. doi:10.1073/pnas.2013182117
38. Li Y, Peterson ME, Campbell H, Nair H. Association of seasonal viral acute respiratory infection with pneumococcal disease: a systematic review of population-based studies. *BMJ Open*. 2018;8(4):e019743. doi:10.1136/bmjopen-2017-019743
39. Pilišvili T, Zell ER, Farley MM, et al. Risk factors for invasive pneumococcal disease in children in the era of conjugate vaccine use. *Pediatrics*. 2010;126(1):e9-e17. doi:10.1542/peds.2009-2150
40. Ciruela P, Broner S, Izquierdo C, et al; Working Group of Invasive Pneumococcal Disease of Catalonia. Invasive pneumococcal disease rates linked to meteorological factors and respiratory virus circulation (Catalonia, 2006-2012). *BMC Public Health*. 2016;16:400. doi:10.1186/s12889-016-3061-6
41. Delestrain C, Danis K, Hau I, et al. Impact of COVID-19 social distancing on viral infection in France: a delayed outbreak of RSV. *Pediatr Pulmonol*. 2021;56(12):3669-3673. doi:10.1002/ppul.25644

42. Rybak A, Yang DD, Schrimpf C, et al. Fall of community-acquired pneumonia in children following COVID-19 non-pharmaceutical interventions: a time series analysis. *Pathogens*. 2021;10(11):1375. doi:10.3390/pathogens10111375
43. Adlhoc C, Mook P, Lamb F, et al; European Influenza Surveillance Network. Very little influenza in the WHO European region during the 2020/21 season, weeks 40 2020 to 8 2021. *Euro Surveill*. 2021;26(11):2100221. doi:10.2807/1560-7917.ES.2021.26.11.2100221
44. van Summeren J, Meijer A, Aspelund G, et al; VRS Study Group in Lyon. Low levels of respiratory syncytial virus activity in Europe during the 2020/21 season: what can we expect in the coming summer and autumn/winter? *Euro Surveill*. 2021;26(29):2100639. doi:10.2807/1560-7917.ES.2021.26.29.2100639
45. Ricketson LJ, Lidder R, Thorington R, et al. PCR and culture analysis of *Streptococcus pneumoniae* nasopharyngeal carriage in healthy children. *Microorganisms*. 2021;9(10):2116. doi:10.3390/microorganisms9102116

SUPPLEMENT.

eTable 1. Main Nonpharmaceutical Interventions Implemented in France Against the Spread of SARS-CoV-2 During the Study Period

eTable 2. Serotype Distribution Among *Streptococcus pneumoniae* Strains Isolated from IPD Cases and Carriage in Children

eTable 3. Sensitivity Analyses of the Estimated Fraction of IPD Change After Nonpharmaceutical Interventions Associated With Changes in RSV, Influenza, and Pneumococcal Carriage

eFigure 1. Association of Nonpharmaceutical Intervention Implementation and Incidence of Pediatric Invasive Pneumococcal Disease in Children Younger Than 15 Years

eFigure 2. Association of Nonpharmaceutical Intervention Implementation and Incidence of Pediatric Emergency Visits for Influenza-like Illness in Children Younger Than 15 Years

eFigure 3. Association of Nonpharmaceutical Intervention Implementation and Percentage of RSV-Positive Tests

eFigure 4. Autocorrelation Function of Residuals, Partial Autocorrelation Function of Residuals, Standardized vs Fitted Values, and Normal Q-Q Plot of the Model Used to Estimate Change in IPD Incidence After Nonpharmaceutical Intervention Implementation

eFigure 5. Autocorrelation Function of Residuals, Partial Autocorrelation Function of Residuals, Standardized vs Fitted Values, and Normal Q-Q Plot of the Model Used to Estimate Change in Pneumococcal Carriage After Nonpharmaceutical Intervention Implementation

eFigure 6. Association of Nonpharmaceutical Intervention Implementation With IPD Incidence Associated With Serotype 24F per 100 000 Children Younger Than 15 Years

eFigure 7. Association of Nonpharmaceutical Intervention Implementation and *Escherichia coli* Invasive Disease Incidence per 100 000 Children Younger Than 15 Years

eFigure 8. Association of Nonpharmaceutical Intervention Implementation and Pneumococcal Carriage Rate of Serotype 24F in Healthy Children

eReferences