



HAL
open science

Genome-wide association analyses identify new risk variants and the genetic architecture of amyotrophic lateral sclerosis

Wouter van Rheenen, Aleksey Shatunov, Annelot Dekker, Russell Mclaughlin, Frank Diekstra, Sara Pulit, Rick van der Spek, Urmo Võsa, Simone de Jong, Matthew Robinson, et al.

► To cite this version:

Wouter van Rheenen, Aleksey Shatunov, Annelot Dekker, Russell Mclaughlin, Frank Diekstra, et al.. Genome-wide association analyses identify new risk variants and the genetic architecture of amyotrophic lateral sclerosis. *Nature Genetics*, 2016, 48 (9), pp.1043-1048. 10.1038/ng.3622 . hal-03939751

HAL Id: hal-03939751

<https://hal.science/hal-03939751v1>

Submitted on 11 Apr 2024

HAL is a multi-disciplinary open access archive for the deposit and dissemination of scientific research documents, whether they are published or not. The documents may come from teaching and research institutions in France or abroad, or from public or private research centers.

L'archive ouverte pluridisciplinaire **HAL**, est destinée au dépôt et à la diffusion de documents scientifiques de niveau recherche, publiés ou non, émanant des établissements d'enseignement et de recherche français ou étrangers, des laboratoires publics ou privés.



Published in final edited form as:

Nat Genet. 2016 September ; 48(9): 1043–1048. doi:10.1038/ng.3622.

Genome-wide association analyses identify new risk variants and the genetic architecture of amyotrophic lateral sclerosis

A full list of authors and affiliations appears at the end of the article.

Abstract

To elucidate the genetic architecture of amyotrophic lateral sclerosis (ALS) and find associated loci, we assembled a custom imputation reference panel from whole-genome-sequenced patients with ALS and matched controls ($n = 1,861$). Through imputation and mixed-model association analysis in 12,577 cases and 23,475 controls, combined with 2,579 cases and 2,767 controls in an independent replication cohort, we fine-mapped a new risk locus on chromosome 21 and identified *C21orf2* as a gene associated with ALS risk. In addition, we identified *MOBP* and *SCFD1* as new associated risk loci. We established evidence of ALS being a complex genetic trait with a polygenic architecture. Furthermore, we estimated the SNP-based heritability at 8.5%, with a distinct and important role for low-frequency variants (frequency 1–10%). This study motivates the interrogation of larger samples with full genome coverage to identify rare causal variants that underpin ALS risk.

Reprints and permissions information is available online at <http://www.nature.com/reprints/index.html>.

Correspondence should be addressed to A.A.-C. (ammar.al-chalabi@kcl.ac.uk) or J.H.V. (j.h.veldink@umcutrecht.nl).

¹²³These authors contributed equally to this work.

¹²⁴These authors jointly directed this work.

⁹⁹A list of members appears in the Supplementary Note.

Accession codes. The GWAS summary statistics and sequenced variants are publicly available through the Project MinE data browser at <http://databrowser.projectmine.com/>.

Note: Any Supplementary Information and Source Data files are available in the online version of the paper.

AUTHOR CONTRIBUTIONS

A.V., N.T., K.L., B.R., K.V., M.R.-G., B.K., J.Z., L.L., L.D.G., S.M., F.S., V.M., M.d.C., S. Pinto, J.S.M., R.R.-G., M.P., S. Chandran, S. Colville, R.S., K.E.M., P.J.S., J.H., R.W.O., A. Pittman, K.S., P.F., A. Malaspina, S.T., S. Petri, S. Abdulla, C.D., M.S., T. Meyer, R.A.O., K.A.S., M.W.-P., C.L.-H., V.M.V.D., J.Q.T., L.E., L. McCluskey, A.N.B., Y.P., T. Meitinger, P.L., M.R.-B., C.R.A., C. Maurel, G. Bensimon, B.L., A.B., C.A.M.P., S.S.-D., A.D., N.W.W., L.T., W.L., A.F., M.R., S. Cichon, M.M.N., P.A., C. Tzourio, J.-F.D., A.G.U., F.R., K.E., A.H., C. Curtis, H.M.B., A.J.v.d.K., M.d.V., A.G., M.W., C.E.S., B.N.S., O.P., C. Cereda, R.D.B., G.P.C., S.D'A., C.B., G.S., L. Mazzini, V.P., C.G., C. Tiloca, A.R., A. Calvo, C. Moglia, M.B., S. Arcuti, R.C., C.Z., C.L., S. Penco, N.R., A. Padovani, M.F., B.M., R.J.S., PARALS Registry, SLALOM Group, SLAP Registry, FALS Sequencing Consortium, SLAGEN Consortium, NNIPPS Study Group, I.B., G.A.N., D.B.R., R.P., M.C.K., J.G., O.W.W., T.R., B.S., I.K., C.A.H., P.N.L., F.C., A. Chio, E.B., E.P., R.T., G.L., J.P., A.C.L., J.H.W., W.R., P.V.D., L.F., T.P., R.H.B., J.D.G., J.E.L., O. Hardiman, P.M.A., P.C., P.V., V.S., M.A.v.E., A.A.-C., L.H.v.d.B. and J.H.V. were involved in phenotyping, sample collection and management. W.v.R., A.S., A.M.D., R.L.M., F.P.D., R.A.A.v.d.S., P.T.C.v.D., G.H.P.T., M.K., A.M.B., W.S., A.R.J., K.P.K., I.F., A.V., N.T., R.D.S., W.J.B., A.V., K.V., M.R.-G., B.K., L.L., S. Abdulla, K.S., E.P., F.P.D., J.M., C. Curtis, G. Breen, A.A.-C. and J.H.V. prepared DNA and performed SNP array hybridizations. W.v.R., S.L.P., K.P.K., K.L., A.M.D., P.T.C.v.D., G.H.P.T., K.R.v.E., P.I.W.d.B. and J.H.V. were involved in the next-generation sequencing analyses. W.v.R., K.R.v.E., A. Menelaou, P.I.W.d.B., A.A.-C. and J.H.V. performed the imputation. W.v.R., A.S., F.P.D., R.L.M., S.L.P., S.d.J., I.F., N.T., W.S., A.R.J., K.P.K., K.R.v.E., K.S., H.M.B., P.I.W.d.B., M.A.v.E., C.M.L., G. Breen, A.A.-C., L.H.v.d.B. and J.H.V. performed GWAS analyses. W.v.R., A.M.D., R.A.A.v.d.S., R.L.M., C.R.A., M.K., A.M.B., R.D.S., E.P.M., J.A.F., C. Tunca, H.H., K.Z., P.C., P.V. and J.H.V. performed the replication analyses. W.v.R., A.S., R.L.M., M.R.R., J.Y., N.R.W., P.M.V., C.M.L., A.A.-C. and J.H.V. performed polygenic risk scoring and heritability analyses. S.d.J., U.V., L.F., T.H.P., W.v.R., O. Harschnitz, G. Breen, R.J.P. and J.H.V. performed biological pathway analyses. U.V., L.F., W.v.R. and J.H.V. performed eQTL analyses. W.v.R., A.S., A.A.-C., L.H.v.d.B. and J.H.V. prepared the manuscript with contributions from all authors. A.A.-C., L.H.v.d.B. and J.H.V. directed the study.

COMPETING FINANCIAL INTERESTS

The authors declare no competing financial interests.

ALS is a fatal neurodegenerative disease that affects 1 in 400 people, with death occurring within 3 to 5 years of the onset of symptoms¹. Twin-based studies estimate heritability to be around 65%, and 5–10% of patients with ALS have a positive family history^{1,2}. Both of these features are indicative of an important genetic component in ALS etiology. Following initial discovery of a risk-associated *C9orf72* locus in ALS genome-wide association studies (GWAS)^{3–5}, identification of a pathogenic hexanucleotide-repeat expansion in this locus revolutionized the field of ALS genetics and biology^{6,7}. The majority of ALS heritability, however, remains unexplained, and only two additional risk loci have since been identified robustly^{3,8}.

To discover new genetic risk loci and elucidate the genetic architecture of ALS, we genotyped 7,763 new cases and 4,669 controls and additionally collected genotype data from published GWAS of ALS. In total, we analyzed 14,791 cases and 26,898 controls from 41 cohorts (Supplementary Table 1 and Supplementary Note). We combined these cohorts on the basis of genotyping platform and nationality to form 27 case–control strata. In total, 12,577 cases and 23,475 controls passed quality control (Online Methods and Supplementary Tables 2–5).

For imputation purposes, we obtained high-coverage (~43.7×) whole-genome sequencing data from 1,246 patients with ALS and 615 controls from the Netherlands (Online Methods and Supplementary Fig. 1). After quality control, we constructed a reference panel including 18,741,510 single-nucleotide variants (SNVs). Imputing this custom reference panel into Dutch ALS cases considerably increased the imputation accuracy for low-frequency variants (minor allele frequency (MAF) = 0.5–10%) in comparison to commonly used reference panels from 1000 Genomes Project Phase 1 (ref. ⁹) and Genome of the Netherlands¹⁰ (Fig. 1a). Improvement was also observed when imputing into ALS cases from the UK (Fig. 1b). To benefit from the global diversity of haplotypes, the custom and 1000 Genomes Project panels were combined, which further improved imputation. Given these results, we used the merged reference panel to impute all strata in our study.

In total, we imputed 8,697,640 variants passing quality control into the 27 strata and tested the strata separately for association with ALS risk by logistic regression. We then included the results in an inverse-variance-weighted, fixed-effects meta-analysis, which identified four loci associated at genome-wide significance ($P < 5 \times 10^{-8}$) (Fig. 2a). The previously reported *C9orf72* (rs3849943)^{3–5,8}, *UNC13A* (rs12608932)^{3,5} and *SARM1* (rs35714695)⁸ loci all reached genome-wide significance, as did a new association for a nonsynonymous variant in *C21orf2* (rs75087725, $P = 8.7 \times 10^{-11}$; Supplementary Tables 6–10). This variant was present on only 10 haplotypes in the 1000 Genomes Project reference panel (MAF = 1.3%), whereas it was present on 62 haplotypes in our custom reference panel (MAF = 1.7%). As a result, more strata passed quality control for this variant by passing the allele frequency threshold of 1% (Supplementary Table 11). This result demonstrates the benefit of the merged reference panel with ALS-specific content, which improved imputation and resulted in the identification of a genome-wide significant association.

Linear mixed models (LMMs) can improve power while controlling for sample structure¹¹, which would be particularly important in our study that included a large number of imperfectly balanced strata. Even though LMM analysis for ascertained case–control data potentially results in a small loss of power in comparison to meta-analysis¹¹, we judged the advantage of combining all strata while controlling the false positive rate to be more important than this potential loss and therefore jointly analyzed all strata in an LMM to identify additional risk loci. There was no overall inflation of the LMM test statistics in comparison to the meta-analysis test statistics (Supplementary Fig. 2). We observed modest inflation of test statistics in the quantile–quantile plot ($\lambda_{GC} = 1.12$, $\lambda_{1,000} = 1.01$; Supplementary Fig. 3). LD score regression yielded an intercept of 1.10 (standard error of 7.8×10^{-3}). Although an LD score regression intercept higher than 1.0 can indicate the presence of residual population stratification, which is fully corrected for in an LMM, this can also reflect a distinct genetic architecture where most causal variants are rare or a noninfinitesimal architecture¹². The LMM identified all four genome-wide-significant associations from the meta-analysis. Furthermore, three additional loci—*MOBP* at 3p22.1 (rs616147), *SCFD1* at 14q12 (rs10139154) and a long noncoding RNA at 8p23.2 (rs7813314)—were associated at genome-wide significance (Fig. 2b, Table 1 and Supplementary Tables 12–14). SNPs in the *MOBP* locus have been reported to be associated in a GWAS on progressive supranuclear palsy (PSP)¹³ and to act as a modifier for survival in frontotemporal dementia (FTD)¹⁴. The putative pleiotropic effects of variants in this locus suggest that ALS, FTD and PSP share a neurodegenerative pathway. We also found that rs74654358 at 12q14.2 in the *TBK1* gene approximated genome-wide significance (MAF = 4.9%, odds ratio (OR) = 1.21 for the A allele, $P = 6.6 \times 10^{-8}$). This gene was recently identified as an ALS risk gene through exome sequencing^{15,16}.

In the replication phase, we genotyped the newly discovered associated SNPs in nine independent replication cohorts, totaling 2,579 cases and 2,767 controls. In these cohorts, we replicated the signals for the *C21orf2*, *MOBP* and *SCFD1* loci, with lower P values in the combined analysis than in the discovery phase (combined P value = 3.08×10^{-10} , 4.19×10^{-10} and 3.45×10^{-8} for rs75087725, rs616147 and rs10139154, respectively; Table 1 and Supplementary Fig. 4)¹⁷. The combined signal for rs7813314 was less significant because the effects for the discovery and replication phases were in opposite directions, indicating non-replication. Although replication yielded an effect estimate for rs10139154 similar to that obtained in the discovery phase, this effect was not statistically significant ($P = 0.09$) in the replication phase alone. This lack of significance reflects the limited sample size of our replication phase, a feature that is inherent to studies of ALS because of its low prevalence. Even larger sample sizes are warranted to replicate this signal robustly.

There was no evidence of residual association in each locus after conditioning on the top SNP, indicating that all the risk loci are independent signals. Apart from the *C9orf72*, *UNC13A* and *SARM1* loci, we found no evidence of associations previously described in smaller GWAS (Supplementary Table 15).

The association of the low-frequency nonsynonymous SNP in *C21orf2* suggested that this gene could be directly involved in ALS risk. Indeed, we found no evidence that linkage disequilibrium (LD) between this SNP and sequenced variants beyond the boundaries of

C21orf2 explained the association of this locus (Supplementary Fig. 5). In addition, we investigated the burden of rare coding mutations in *C21orf2* in a set of whole-genome-sequenced cases ($n = 2,562$) and controls ($n = 1,138$). After quality control, these variants were tested for association using pooled association tests for rare variants and applying correction for population structure (tests T5 and T1 for alleles with 5% and 1% frequency, respectively; Supplementary Note). This approach demonstrated an excess of nonsynonymous and loss-of-function mutations in *C21orf2* among ALS cases that persisted after conditioning on rs75087725 ($P_{T5} = 9.2 \times 10^{-5}$, $P_{T1} = 0.01$; Supplementary Fig. 6), further supporting the notion that *C21orf2* contributes to ALS risk.

In an effort to fine-map the other loci to pinpoint susceptibility genes, we searched for SNPs in these loci with *cis* expression quantitative trait locus (*cis*-eQTL) effects observed in brain and other tissues (Supplementary Table 16 and Supplementary Note)¹⁸. We found overlap with previously identified brain *cis*-eQTLs for five regions (Supplementary Fig. 7, Supplementary Table 17 and Supplementary Data Set). In the *C9orf72* locus, we found that proxies of rs3849943 (LD $r^2 = 0.21$ – 0.56) only had a brain *cis*-eQTL effect on *C9orf72* (minimal $P = 5.27 \times 10^{-7}$), which harbors the hexanucleotide-repeat expansion that drives this GWAS signal. Additionally, we found that rs12608932 and its proxies in the *UNC13A* locus had an exon-level *cis*-eQTL effect on *KCNN1* in frontal cortex ($P = 1.15 \times 10^{-3}$)¹⁹. Another overlap was observed in the *SARM1* locus where rs35714695 and its proxies had the strongest exon-level *cis*-eQTL effect on *POLDIP2* in multiple brain tissues ($P = 2.32 \times 10^{-3}$). In the *SCFD1* locus, rs10139154 and its proxies had a *cis*-eQTL effect on *SCFD1* in cerebellar tissue ($P = 7.71 \times 10^{-4}$). For the *MOBP* locus, rs1768208 and its proxies had a *cis*-eQTL effect on *RPSA* ($P = 7.71 \times 10^{-4}$).

To describe the genetic architecture of ALS, we generated polygenic scores, which can be used to predict phenotypes for traits with a poly-genic architecture²⁰. We calculated SNP effects using an LMM in 18 of the 27 strata and subsequently assessed predictive ability in the other 9 independent strata. This analysis showed that a significant albeit modest proportion of the phenotypic variance could be explained by all SNPs (Nagelkerke $r^2 = 0.44\%$, $r^2 = 0.15\%$ on the liability scale, $P = 2.7 \times 10^{-10}$; Supplementary Fig. 8). This finding adds to the existing evidence that ALS is a complex genetic trait with a polygenic architecture. To further quantify the contribution of common SNPs to ALS risk, we estimated SNP-based heritability using three approaches, all assuming a population baseline risk of 0.25% (ref. ²¹). GCTA-REML estimated the SNP-based heritability at 8.5% (s.e.m. = 0.5%). Haseman–Elston regression yielded a very similar estimate of 7.9%, and LD score regression estimated the SNP-based heritability at 8.2% (s.e.m. = 0.5%). The heritability estimates for each chromosome were significantly correlated with chromosome length ($r^2 = 0.46$, $P = 4.9 \times 10^{-4}$; Fig. 3a), again indicative of a polygenic architecture in ALS.

We found that the genome-wide-significant loci only explained 0.2% of heritability, and the bulk of the heritability (8.3%, s.e.m. = 0.3%) was thus captured by SNPs with associations below genome-wide significance. This finding implies that many genetic risk variants have yet to be discovered. Understanding where these unidentified risk variants remain across the allele frequency spectrum will inform the design of future studies to identify these variants. We therefore estimated heritability partitioned by MAF. Furthermore, we contrasted these

results with those for common polygenic traits studied in GWAS such as schizophrenia. We observed a clear trend indicating that most variance is explained by low-frequency SNPs (Fig. 3b). Exclusion of the *C9orf72* locus, which harbors the rare pathogenic repeat expansion, and the other genome-wide-significant loci did not affect this trend (Supplementary Fig. 9). This architecture is different from that expected for common polygenic traits and reflects a polygenic rare variant architecture observed in simulations²².

To gain better insight into the biological pathways that explain the associated loci found in this study, we looked for enriched pathways using DEPICT²³. This analysis identified SNAP receptor (SNARE) activity as the only enriched category (false discovery rate (FDR) < 0.05; Supplementary Fig. 10). SNARE complexes have a central role in neurotransmitter release and synaptic function²⁴, which are both perturbed in ALS²⁵.

Although the biological role of *C21orf2*, a conserved leucine-rich-repeat protein, remains poorly characterized, this protein is part of the ciliome and is required for the formation and/or maintenance of primary cilia²⁶. Defects in primary cilia are associated with various neurological disorders, and cilia numbers are decreased in mice expressing the Gly93Ala mutant of human *SOD1*, a well-characterized ALS model²⁷. *C21orf2* has also been localized to mitochondria in immune cells²⁸ and is part of the interactome of the protein product of *NEK1*, which has previously been associated with ALS¹⁵. Both proteins seem to be involved in DNA repair mechanisms²⁹. Although future studies are needed to dissect the function of *C21orf2* in ALS pathophysiology, we speculate that defects in *C21orf2* may lead to primary cilium and/or mitochondrial dysfunction or inefficient DNA repair and thereby result in adult-onset disease. The other associated loci will require more extensive studies to fine-map causal variants. *SARM1* has been suggested to be a susceptibility gene for ALS, mainly because of its role in Wallerian degeneration and its interaction with *UNC13A*^{8,30}. Although these are indeed interesting observations, the brain *cis*-eQTL effect for SNPs in this locus on *POLDIP2* suggests that *POLDIP2* and not *SARM1* could in fact be the causal gene in this locus. Similarly, *KCNN1*, which encodes a neuronal potassium channel involved in neuronal excitability, could be the causal gene either through a direct eQTL effect or rare variants in LD with the associated SNP in *UNC13A*.

In conclusion, we have identified a key role for rare variation in ALS and discovered SNPs in new complex loci. Our study therefore informs future study design in ALS genetics, promoting the combination of larger sample sizes, full genome coverage and targeted genome editing experiments, leveraged together to fine-map new loci, identify rare causal variants and thereby elucidate the biology of ALS.

ONLINE METHODS

The software packages used, their version, web source and references are described in Supplementary Table 18.

GWAS discovery phase and quality control

Details on the acquired genotype data from previously published GWAS are described in Supplementary Table 1. Methods for case and control ascertainment for each cohort are

described in the Supplementary Note. All cases and controls gave written informed consent, and the relevant institutional review boards approved this study. To obtain genotype data for newly genotyped individuals, genomic DNA was hybridized to the Illumina OmniExpress array according to the manufacturer's protocol. Subsequent quality control included (i) removing low-quality SNPs and individuals from each cohort, (ii) combining unbalanced cohorts on the basis of nationality and genotyping platform to form case-control strata, (iii) removing low-quality SNPs, related individuals and population outliers per stratum and (iv) calculating genomic inflation factors per stratum. More details are described in the Supplementary Note and Supplementary Figure 11. The number of SNPs and individuals failing each quality control step per cohort and stratum is displayed in Supplementary Tables 2–5.

Whole-genome sequencing (custom reference panel)

Individuals were whole-genome sequenced on the Illumina HiSeq 2500 platform using PCR-free library preparation and 100-bp paired-end sequencing, yielding a minimum of 35× coverage. Reads were aligned to the hg19 human genome build, and after variant calling (Isaac variant caller) additional SNV and sample quality control was performed (Supplementary Fig. 12 and Supplementary Note). Individuals in our custom reference panel were also included in the GWAS in strata sNL2, sNL3 and sNL4.

Merging reference panels

All high-quality calls in the custom reference panel were phased using SHAPEIT2 software. After checking strand and allele inconsistencies, both the 1000 Genomes Project reference panel (release 05-21-2011)³¹ and custom reference panel were imputed up to the union of their variants as described previously³². Variants with inconsistent allele frequencies between the two panels were removed.

Imputation accuracy performance

To compare the imputation accuracy between different reference panels, 109 unrelated ALS cases of Dutch ancestry sequenced by Complete Genomics and 67 ALS cases from the UK sequenced by Illumina were selected as a test panel. All variants not present on the Illumina Omni1M array were masked, and the SNVs on chromosome 20 were subsequently imputed back using four different reference panels (1000 Genomes Project, GoNL, custom panel and merged panel). Concordance between the imputed alleles and sequenced alleles was assessed in each allele frequency bin where allele frequencies were calculated from the Dutch samples included in the Genome of the Netherlands cohort.

GWAS imputation

Prephasing was performed for each stratum using SHAPEIT2 with the 1000 Genomes Project phase 1 (release 05-21-2011) hap-lotypes³¹ as a reference panel. Subsequently, strata were imputed up to the merged reference panel in 5-Mb chunks using IMPUTE2. Imputed variants with a MAF <1% or INFO score <0.3 were excluded from further analysis. Variants with allele frequency differences between strata, defined as deviating by >10 s.d. from the normalized mean allele frequency difference between those strata and an absolute difference

>5%, were excluded because they are likely to represent sequencing or genotyping artifacts. Imputation concordance scores for cases and controls were compared to assess biases in imputation accuracy (Supplementary Table 19).

Meta-analysis

Logistic regression was performed on imputed genotype dosages under an additive model using SNPTEST software. On the basis of scree plots, one to four principal components were included per stratum. These results were then combined in an inverse-variance-weighted, fixed-effect meta-analysis using METAL. No marked heterogeneity across strata was observed as the Cochrane's Q test statistics did not deviate from the null distribution ($\lambda = 0.96$). Therefore, no SNPs were removed owing to excessive heterogeneity. The genomic inflation factor was calculated, and the quantile–quantile plot is provided in Supplementary Figure 3a.

Linear mixed model

All strata were combined including SNPs that passed quality control in every stratum. Subsequently, genetic relationship matrices (GRMs) were calculated for each chromosome including all SNPs using the Genome-Wide Complex Trait Analysis (GCTA) software package. Each SNP was then tested in an LMM including a GRM composed of all chromosomes excluding the target chromosome (leave one chromosome out, LOCO). The genomic inflation factor was calculated, and the quantile–quantile plot is provided as Supplementary Figure 3b.

Replication

For the replication phase, independent ALS cases and controls from Australia, Belgium, France, Germany, Ireland, Italy, the Netherlands and Turkey that were not used in the discovery phase were included. A pre-designed TaqMan genotyping assay was used to replicate rs75087725 and rs616147. Sanger sequencing was performed to replicate rs10139154 and rs7813314 (Supplementary Table 20 and Supplementary Note). All genotypes were tested in a logistic regression per country and subsequently underwent meta-analysis.

Rare variant analysis in *C21orf2*

The burden of nonsynonymous rare variants in *C21orf2* was assessed in whole-genome sequencing data obtained from ALS cases and controls from the Netherlands, Belgium, Ireland, the UK and the United States. After quality control, the burden of nonsynonymous and loss-of-function mutations in *C21orf2* was tested for association in each country and meta-analysis was subsequently performed. More details are provided in the Supplementary Note and Supplementary Figure 13.

Polygenic risk scores

To assess the predictive accuracy of polygenic risk scores in an independent data set, SNP weights were assigned on the basis of the LMM (GCTA-LOCO) analysis in 18 of 27 strata. SNPs in high LD ($r^2 > 0.5$) in a 250-kb window were clumped. Subsequently, polygenic risk

scores for cases and controls in the nine independent strata were calculated on the basis of their genotype dosages using PLINK v1.9. To obtain the Nagelkerke r^2 and corresponding P values, these scores were then regressed on their true phenotype in a logistic regression where (on the basis of scree plots) the first three principal components, sex and stratum were included as covariates.

SNP-based heritability estimates

GCTA-REML—GRMs were calculated using GCTA software including genotype dosages passing quality control in all strata. On the basis of the diagonal of the GRM, individuals representing subpopulations that contained an abundance of rare alleles (diagonal values mean ± 2 s.d.) were removed (Supplementary Fig. 14a). Pairs where relatedness (off-diagonal) exceeded 0.05 were removed as well (Supplementary Fig. 14b). The eigenvectors for the first ten principal components were included as fixed effects to account for more subtle population structure. The prevalence of ALS was defined as the lifetime morbid risk for ALS (that is, 1 in 400)²¹. To estimate the SNP-based heritability for all non-genome-wide-significant SNPs, the genotypes for the SNPs reaching genome-wide significance were modeled as fixed effects. The variance explained by the GRM therefore reflects the SNP-based heritability of all non-genome-wide-significant SNPs. SNP-based heritability partitioned by chromosome or MAF was calculated by including multiple GRMs, calculated on SNPs from each chromosome or in the respective frequency bin, in one model.

Haseman–Elston regression—The phenotype correlation–genotype correlation (PCGC) regression software package was used to calculate heritability on the basis of the Haseman–Elston regression including the eigenvectors for the first ten principal components as covariates. The prevalence was again defined as the lifetime morbid risk (1 in 400).

LD score regression—Summary statistics from GCTA-LOCO and LD scores calculated from European individuals in 1000 Genomes Project were used for LD score regression. Associated SNPs ($P < 5 \times 10^{-8}$) and variants not in HapMap 3 were excluded. Considering adequate correction for population structure and distant relatedness in the LMM, the intercept was constrained to 1.0 (ref. 12).

Biological pathway analysis (DEPICT)

Functional interpretation of associated GWAS loci was carried out using DEPICT, using locus definition based on 1000 Genomes Project Phase 1 data. This method prioritizes genes in the affected loci and predicts involved pathways, biological processes and tissues, using gene co-regulation data from 77,840 expression arrays. Three separate analyses were performed for GWAS loci reaching $P = 1 \times 10^{-4}$, $P = 1 \times 10^{-5}$ or $P = 1 \times 10^{-6}$. One thousand permutations were used for adjusting the nominal enrichment P values for biases and additionally 200 permutations were used for FDR calculation.

Supplementary Material

Refer to Web version on PubMed Central for supplementary material.

Authors

Wouter van Rheenen^{1,123}, Aleksey Shatunov^{2,123}, Annelot M Dekker¹, Russell L McLaughlin³, Frank P Diekstra¹, Sara L Pulit⁴, Rick A A van der Spek¹, Urmo Vösa⁵, Simone de Jong^{6,7}, Matthew R Robinson⁸, Jian Yang⁸, Isabella Fogh^{2,9}, Perry TC van Doormaal¹, Gijs H P Tazelaar¹, Max Koppers^{1,10}, Anna M Blokhuis^{1,10}, William Sproviero², Ashley R Jones², Kevin P Kenna¹¹, Kristel R van Eijk¹, Oliver Harschnitz^{1,10}, Raymond D Schellevis¹, William J Brands¹, Jelena Medic¹, Androniki Menelaou⁴, Alice Vajda^{12,13}, Nicola Ticozzi^{9,14}, Kuang Lin², Boris Rogelj^{15,16}, Katarina Vrabec¹⁷, Metka Ravnik-Glava^{17,18}, Blaž Koritnik¹⁹, Janez Zidar¹⁹, Lea Leonardis¹⁹, Leja Dolenc Grošelj¹⁹, Stéphanie Millecamps²⁰, François Salachas^{20,21,22}, Vincent Meininger^{23,24}, Mamede de Carvalho^{25,26}, Susana Pinto^{25,26}, Jesus S Mora²⁷, Ricardo Rojas-García^{28,29}, Meraida Polak^{30,31}, Siddharthan Chandran^{32,33}, Shuna Colville³², Robert Swingler³², Karen E Morrison³⁴, Pamela J Shaw³⁵, John Hardy³⁶, Richard W Orrell³⁷, Alan Pittman^{36,38}, Katie Sidle³⁷, Pietro Fratta³⁹, Andrea Malaspina^{40,41}, Simon Topp², Susanne Petri⁴², Susanne Abdulla⁴³, Carsten Drepper⁴⁴, Michael Sendtner⁴⁴, Thomas Meyer⁴⁵, Roel A Ophoff^{46,47,48}, Kim A Staats⁴⁸, Martina Wiedau-Pazos⁴⁹, Catherine Lomen-Hoerth⁵⁰, Vivianna M Van Deerlin⁵¹, John Q Trojanowski⁵¹, Lauren Elman⁵², Leo McCluskey⁵², A Nazli Basak⁵³, Ceren Tunca⁵³, Hamid Hamzeiy⁵³, Yesim Parman⁵⁴, Thomas Meitinger⁵⁵, Peter Lichtner⁵⁵, Milena Radivojkov-Blagojevic⁵⁵, Christian R Andres⁵⁶, Cindy Maurel⁵⁶, Gilbert Bensimon^{57,58,59}, Bernhard Landwehrmeyer⁶⁰, Alexis Brice^{61,62,63,64,65}, Christine A M Payan^{57,59}, Safaa Saker-Delye⁶⁶, Alexandra Dürr⁶⁷, Nicholas W Wood⁶⁸, Lukas Tittmann⁶⁹, Wolfgang Lieb⁶⁹, Andre Franke⁷⁰, Marcella Rietschel⁷¹, Sven Cichon^{72,73,74,75,76}, Markus M Nöthen^{72,73}, Philippe Amouyel⁷⁷, Christophe Tzourio⁷⁸, Jean-François Dartigues⁷⁸, Andre G Uitterlinden^{79,80}, Fernando Rivadeneira^{79,80}, Karol Estrada⁷⁹, Albert Hofman^{80,81}, Charles Curtis^{6,7}, Hylke M Blauw¹, Anneke J van der Kooij⁸², Marianne de Visser⁸², An Goris⁸³, Markus Weber⁸⁴, Christopher E Shaw², Bradley N Smith², Orietta Pansarasa⁸⁵, Cristina Cereda⁸⁵, Roberto Del Bo⁸⁶, Giacomo P Comi⁸⁶, Sandra D'Alfonso⁸⁷, Cinzia Bertolin⁸⁸, Gianni Sorarù⁸⁸, Letizia Mazzini⁸⁹, Viviana Pensato⁹⁰, Cinzia Gellera⁹⁰, Cinzia Tiloca⁹, Antonia Ratti^{9,14}, Andrea Calvo^{91,92}, Cristina Moglia^{91,92}, Maura Brunetti^{91,92}, Simona Arcuti⁹³, Rosa Capozzo⁹³, Chiara Zecca⁹³, Christian Lunetta⁹⁴, Silvana Penco⁹⁵, Nilo Riva⁹⁶, Alessandro Padovani⁹⁷, Massimiliano Filosto⁹⁷, Bernard Muller⁹⁸, Robbert Jan Stuit⁹⁸, PARALS Registry⁹⁹, SLALOM Group⁹⁹, SLAP Registry⁹⁹, FALS Sequencing Consortium⁹⁹, SLAGEN Consortium⁹⁹, NNIPPS Study Group⁹⁹, Ian Blair¹⁰⁰, Katharine Zhang¹⁰⁰, Emily P McCann¹⁰⁰, Jennifer A Fifita¹⁰⁰, Garth A Nicholson^{100,101}, Dominic B Rowe¹⁰⁰, Roger Pamphlett¹⁰², Matthew C Kiernan¹⁰³, Julian Grosskreutz¹⁰⁴, Otto W Witte¹⁰⁴, Thomas Ringer¹⁰⁴, Tino Prell¹⁰⁴, Beatrice Stubendorff¹⁰⁴, Ingo Kurth¹⁰⁵, Christian A Hübner¹⁰⁵, P Nigel Leigh¹⁰⁶, Federico Casale⁹¹, Adriano Chio^{91,92}, Ettore Beghi¹⁰⁷, Elisabetta Pupillo¹⁰⁷, Rosanna Tortelli⁹³, Giancarlo Logroscino^{108,109}, John Powell², Albert C Ludolph⁶⁰, Jochen H Weishaupt⁶⁰, Wim Robberecht^{83,110,111}, Philip Van Damme^{83,110,111}, Lude Franke⁵, Tune H

Pers^{112,113,114,115,116}, Robert H Brown¹¹, Jonathan D Glass^{30,31}, John E Landers¹¹, Orla Hardiman^{12,13}, Peter M Andersen^{60,117}, Philippe Corcia^{56,118,119}, Patrick Vourc'h⁵⁶, Vincenzo Silani^{9,14}, Naomi R Wray⁸, Peter M Visscher^{8,120}, Paul I W de Bakker^{4,121}, Michael A van Es¹, R Jeroen Pasterkamp¹⁰, Cathryn M Lewis^{6,122}, Gerome Breen^{6,7}, Ammar Al-Chalabi^{2,124}, Leonard H van den Berg^{1,124}, and Jan H Veldink^{1,124}

Affiliations

¹Department of Neurology, Brain Center Rudolf Magnus, University Medical Center Utrecht, Utrecht, the Netherlands ²Maurice Wohl Clinical Neuroscience Institute, Department of Basic and Clinical Neuroscience, King's College London, London, UK ³Population Genetics Laboratory, Smurfit Institute of Genetics, Trinity College Dublin, Dublin, Ireland ⁴Department of Medical Genetics, Center for Molecular Medicine, University Medical Center Utrecht, Utrecht, the Netherlands ⁵Department of Genetics, University of Groningen, University Medical Centre Groningen, Groningen, the Netherlands ⁶MRC Social, Genetic and Developmental Psychiatry Centre, Institute of Psychiatry, Psychology and Neuroscience, King's College London, London, UK ⁷NIHR Biomedical Research Centre for Mental Health, Maudsley Hospital and Institute of Psychiatry, Psychology and Neuroscience, King's College London, London, UK ⁸Queensland Brain Institute, University of Queensland, Brisbane, Queensland, Australia ⁹Department of Neurology and Laboratory of Neuroscience, IRCCS Istituto Auxologico Italiano, Milan, Italy ¹⁰Department of Translational Neuroscience, Brain Center Rudolf Magnus, University Medical Center Utrecht, Utrecht, the Netherlands ¹¹Department of Neurology, University of Massachusetts Medical School, Worcester, Massachusetts, USA ¹²Academic Unit of Neurology, Trinity College Dublin, Trinity Biomedical Sciences Institute, Dublin, Ireland ¹³Department of Neurology, Beaumont Hospital, Dublin, Ireland ¹⁴Department of Pathophysiology and Transplantation, 'Dino Ferrari' Center, Università degli Studi di Milano, Milan, Italy ¹⁵Department of Biotechnology, Jožef Stefan Institute, Ljubljana, Slovenia ¹⁶Biomedical Research Institute BRIS, Ljubljana, Slovenia ¹⁷Department of Molecular Genetics, Institute of Pathology, Faculty of Medicine, University of Ljubljana, Ljubljana, Slovenia ¹⁸Institute of Biochemistry, Faculty of Medicine, University of Ljubljana, Ljubljana, Slovenia ¹⁹Ljubljana ALS Centre, Institute of Clinical Neurophysiology, University Medical Centre Ljubljana, Ljubljana, Slovenia ²⁰Institut du Cerveau et de la Moelle Epinière, INSERM U1127, CNRS UMR 7225, Sorbonne Universités, UPMC Université Paris 06, UMRS 1127, Paris, France ²¹Centre de Référence Maladies Rares SLA Ile de France, Département de Neurologie, Hôpital de la Pitié-Salpêtrière, Paris, France ²²GRC-UPMC SLA et Maladies du Motoneurone, Paris, France ²³Ramsay Generale de Santé, Hôpital Peupliers, Paris, France ²⁴Réseau SLA Ile de France, Paris, France ²⁵Institute of Physiology, Institute of Molecular Medicine, Faculty of Medicine, University of Lisbon, Lisbon, Portugal ²⁶Department of Neurosciences, Hospital de Santa Maria-CHLN, Lisbon, Portugal ²⁷Department of Neurology, Hospital San Rafael, Madrid, Spain ²⁸Neurology Department, Hospital de la Santa Creu i Sant Pau de Barcelona, Autonomous University of Barcelona, Barcelona, Spain ²⁹Centro

de Investigación en Red de Enfermedades Raras (CIBERER), Madrid, Spain
³⁰Department of Neurology, Emory University School of Medicine, Atlanta, Georgia, USA
³¹Emory ALS Center, Emory University School of Medicine, Atlanta, Georgia, USA
³²Euan MacDonald Centre for Motor Neuron Disease Research, Edinburgh, UK
³³Centre for Neuroregeneration and Medical Research Council Centre for Regenerative Medicine, University of Edinburgh, Edinburgh, UK
³⁴Faculty of Medicine, University of Southampton, Southampton, UK
³⁵Sheffield Institute for Translational Neuroscience (SITraN), University of Sheffield, Sheffield, UK
³⁶Department of Molecular Neuroscience, Institute of Neurology, University College London, London, UK
³⁷Department of Clinical Neuroscience, Institute of Neurology, University College London, London, UK
³⁸Reta Lila Weston Institute, Institute of Neurology, University College London, London, UK
³⁹Sobell Department of Motor Neuroscience and Movement Disorders, Institute of Neurology, University College London, London, UK
⁴⁰Centre for Neuroscience and Trauma, Blizard Institute, Queen Mary University of London, London, UK
⁴¹North-East London and Essex Regional Motor Neuron Disease Care Centre, London, UK
⁴²Department of Neurology, Hannover Medical School, Hannover, Germany
⁴³Department of Neurology, Otto von Guericke University Magdeburg, Magdeburg, Germany
⁴⁴Institute of Clinical Neurobiology, University Hospital Würzburg, Würzburg, Germany
⁴⁵Department of Neurology, Charité University Hospital, Humboldt University, Berlin, Germany
⁴⁶Department of Psychiatry, Rudolf Magnus Institute of Neuroscience, University Medical Center Utrecht, Utrecht, the Netherlands
⁴⁷Department of Human Genetics, David Geffen School of Medicine, University of California, Los Angeles, Los Angeles, California, USA
⁴⁸Center for Neurobehavioral Genetics, Semel Institute for Neuroscience and Human Behavior, University of California, Los Angeles, Los Angeles, California, USA
⁴⁹Department of Neurology, David Geffen School of Medicine, University of California, Los Angeles, Los Angeles, California, USA
⁵⁰Department of Neurology, University of California, San Francisco, San Francisco, California, USA
⁵¹Center for Neurodegenerative Disease Research, Perelman School of Medicine at the University of Pennsylvania, Philadelphia, Pennsylvania, USA
⁵²Department of Neurology, Perelman School of Medicine at the University of Pennsylvania, Philadelphia, Pennsylvania, USA
⁵³Neurodegeneration Research Laboratory, Boaziçi University, Istanbul, Turkey
⁵⁴Neurology Department, Istanbul Medical School, Istanbul University, Istanbul, Turkey
⁵⁵Institute of Human Genetics, Helmholtz Zentrum München, Neuherberg, Germany
⁵⁶INSERM U930, Université François Rabelais, Tours, France
⁵⁷AP-HP, Département de Pharmacologie Clinique, Hôpital de la Pitié-Salpêtrière, Paris, France
⁵⁸UPMC, Pharmacologie, Paris VI, Paris, France
⁵⁹BESPIM, CHU de Nîmes, Nîmes, France
⁶⁰Department of Neurology, Ulm University, Ulm, Germany
⁶¹INSERM U1127, Hôpital de la Pitié-Salpêtrière, Paris, France
⁶²CNRS UMR 7225, Hôpital de la Pitié-Salpêtrière, Paris, France
⁶³Sorbonne Universités, UPMC Paris 06, UMRS 1127, Hôpital de la Pitié-Salpêtrière, Paris, France
⁶⁴Institut du Cerveau et de la Moelle Epinière, Hôpital de la Pitié-Salpêtrière, Paris, France
⁶⁵AP-HP, Département de Génétique, Hôpital de la Pitié-Salpêtrière, Paris, France

⁶⁶Genethon, CNRS UMR 8587, Evry, France ⁶⁷Department of Medical Genetics, Institut du Cerveau et de la Moelle Epinière, Hôpital Pitié-Salpêtrière, Paris, France ⁶⁸Department of Neurogenetics, Institute of Neurology, University College London, London, UK ⁶⁹PopGen Biobank and Institute of Epidemiology, Christian Albrechts University Kiel, Kiel, Germany ⁷⁰Institute of Clinical Molecular Biology, Kiel University, Kiel, Germany ⁷¹Department of Genetic Epidemiology in Psychiatry, Central Institute of Mental Health, Faculty of Medicine Mannheim, University of Heidelberg, Heidelberg, Germany ⁷²Institute of Human Genetics, University of Bonn, Bonn, Germany ⁷³Department of Genomics, Life and Brain Center, Bonn, Germany ⁷⁴Division of Medical Genetics, University Hospital Basel, University of Basel, Basel, Switzerland ⁷⁵Department of Biomedicine, University of Basel, Basel, Switzerland ⁷⁶Institute of Neuroscience and Medicine INM-1, Research Center Juelich, Juelich, Germany ⁷⁷University of Lille, INSERM, CHU de Lille, Institut Pasteur de Lille, U1167-RID-AGE Risk Factor and Molecular Determinants of Aging Diseases, Lille, France ⁷⁸Bordeaux University, ISPED, Centre INSERM U1219–Epidemiologie Biostatistique et CIC-1401, CHU de Bordeaux, Pôle de Santé Publique, Bordeaux, France ⁷⁹Department of Internal Medicine, Genetics Laboratory, Erasmus Medical Center Rotterdam, Rotterdam, the Netherlands ⁸⁰Department of Epidemiology, Erasmus Medical Center Rotterdam, Rotterdam, the Netherlands ⁸¹Department of Epidemiology, Harvard T.H. Chan School of Public Health, Boston, Massachusetts, USA ⁸²Department of Neurology, Academic Medical Center, University of Amsterdam, Amsterdam, the Netherlands ⁸³Department of Neurosciences, Experimental Neurology, Leuven Research Institute for Neuroscience and Disease (LIND), KU Leuven–University of Leuven, Leuven, Belgium ⁸⁴Neuromuscular Diseases Unit/ALS Clinic, Kantonsspital St. Gallen, St. Gallen, Switzerland ⁸⁵Laboratory of Experimental Neurobiology, IRCCS ‘C. Mondino’ National Institute of Neurology Foundation, Pavia, Italy ⁸⁶Neurologic Unit, IRCCS Foundation Ca’ Granda Ospedale Maggiore Policlinico, Milan, Italy ⁸⁷Department of Health Sciences, Interdisciplinary Research Center of Autoimmune Diseases, Università del Piemonte Orientale, Novara, Italy ⁸⁸Department of Neurosciences, University of Padova, Padova, Italy ⁸⁹Department of Neurology, Università del Piemonte Orientale, Novara, Italy ⁹⁰Unit of Genetics of Neurodegenerative and Metabolic Diseases, Fondazione IRCCS Istituto Neurologico ‘Carlo Besta’, Milan, Italy ⁹¹‘Rita Levi Montalcini’ Department of Neuroscience, ALS Centre, University of Torino, Turin, Italy ⁹²Azienda Ospedaliera Città della Salute e della Scienza, Turin, Italy ⁹³Department of Clinical Research in Neurology, University of Bari ‘A. Moro’ at Pia Fondazione ‘Card. G. Panico’, Tricase, Italy ⁹⁴NEMO Clinical Center, Serena Onlus Foundation, Niguarda Ca’ Granda Hospital, Milan, Italy ⁹⁵Medical Genetics Unit, Department of Laboratory Medicine, Niguarda Ca’ Granda Hospital, Milan, Italy ⁹⁶Department of Neurology, Institute of Experimental Neurology (INSPE), Division of Neuroscience, San Raffaele Scientific Institute, Milan, Italy ⁹⁷Neurology Unit, Department of Clinical and Experimental Sciences, University of Brescia, Brescia, Italy ⁹⁸Project MinE Foundation, Rotterdam, the Netherlands ¹⁰⁰Department of Biomedical Sciences, Faculty of

Medicine and Health Sciences, Macquarie University, Sydney, New South Wales, Australia ¹⁰¹University of Sydney, ANZAC Research Institute, Concord Hospital, Sydney, New South Wales, Australia ¹⁰²Stacey MND Laboratory, Department of Pathology, University of Sydney, Sydney, New South Wales, Australia ¹⁰³Brain and Mind Centre, University of Sydney, Sydney, New South Wales, Australia ¹⁰⁴Hans Berger Department of Neurology, Jena University Hospital, Jena, Germany ¹⁰⁵Institute of Human Genetics, Jena University Hospital, Jena, Germany ¹⁰⁶Department of Neurology, Brighton and Sussex Medical School Trafford Centre for Biomedical Research, University of Sussex, Falmer, UK ¹⁰⁷Laboratory of Neurological Diseases, Department of Neuroscience, IRCCS Istituto di Ricerche Farmacologiche Mario Negri, Milan, Italy ¹⁰⁸Department of Basic Medical Sciences, Neuroscience and Sense Organs, University of Bari 'Aldo Moro', Bari, Italy ¹⁰⁹Unit of Neurodegenerative Diseases, Department of Clinical Research in Neurology, University of Bari 'Aldo Moro' at Pia Fondazione Cardinale G. Panico, Tricase, Italy ¹¹⁰Vesalius Research Center, Laboratory of Neurobiology, VIB, Leuven, Belgium ¹¹¹Department of Neurology, University Hospitals Leuven, Leuven, Belgium ¹¹²Division of Endocrinology, Boston Children's Hospital, Boston, Massachusetts, USA ¹¹³Division of Genetics, Boston Children's Hospital, Boston, Massachusetts, USA ¹¹⁴Center for Basic Translational Obesity Research, Boston Children's Hospital, Boston, Massachusetts, USA ¹¹⁵Department of Genetics, Harvard Medical School, Boston, Massachusetts, USA ¹¹⁶Program in Medical and Population Genetics, Broad Institute, Cambridge, Massachusetts, USA ¹¹⁷Department of Pharmacology and Clinical Neuroscience, Umeå University, Umeå, Sweden ¹¹⁸Centre SLA, CHRU de Tours, Tours, France ¹¹⁹Federation des Centres SLA Tours and Limoges, LITORALS, Tours, France ¹²⁰Diamantina Institute, University of Queensland Translational Research Institute, Brisbane, Queensland, Australia ¹²¹Department of Epidemiology, Julius Center for Health Sciences and Primary Care, University Medical Center Utrecht, Utrecht, the Netherlands ¹²²Department of Medical and Molecular Genetics, King's College London, London, UK

Acknowledgments

The work of the contributing groups was supported by various grants from governmental and charitable bodies. Details are provided in the Supplementary Note.

References

1. Hardiman O, van den Berg LH, Kiernan MC. Clinical diagnosis and management of amyotrophic lateral sclerosis. *Nat Rev Neurol*. 2011; 7:639–649. [PubMed: 21989247]
2. Al-Chalabi A, et al. An estimate of amyotrophic lateral sclerosis heritability using twin data. *J Neurol Neurosurg Psychiatry*. 2010; 81:1324–1326. [PubMed: 20861059]
3. van Es MA, et al. Genome-wide association study identifies 19p13.3 (*UNC13A*) and 9p21.2 as susceptibility loci for sporadic amyotrophic lateral sclerosis. *Nat Genet*. 2009; 41:1083–1087. [PubMed: 19734901]
4. Laaksovirta H, et al. Chromosome 9p21 in amyotrophic lateral sclerosis in Finland: a genome-wide association study. *Lancet Neurol*. 2010; 9:978–985. [PubMed: 20801718]

5. Shatunov A, et al. Chromosome 9p21 in sporadic amyotrophic lateral sclerosis in the UK and seven other countries: a genome-wide association study. *Lancet Neurol.* 2010; 9:986–994. [PubMed: 20801717]
6. DeJesus-Hernandez M, et al. Expanded GGGGCC hexanucleotide repeat in noncoding region of *C9orf72* causes chromosome 9p-linked FTD and ALS. *Neuron.* 2011; 72:245–256. [PubMed: 21944778]
7. Renton AE, et al. A hexanucleotide repeat expansion in *C9orf72* is the cause of chromosome 9p21-linked ALS-FTD. *Neuron.* 2011; 72:257–268. [PubMed: 21944779]
8. Fogh I, et al. A genome-wide association meta-analysis identifies a novel locus at 17q11.2 associated with sporadic amyotrophic lateral sclerosis. *Hum Mol Genet.* 2014; 23:2220–2231. [PubMed: 24256812]
9. 1000 Genomes Project Consortium. An integrated map of genetic variation from 1,092 human genomes. *Nature.* 2012; 491:56–65. [PubMed: 23128226]
10. Genome of the Netherlands Consortium. Whole-genome sequence variation, population structure and demographic history of the Dutch population. *Nat Genet.* 2014; 46:818–825. [PubMed: 24974849]
11. Yang J, Zaitlen NA, Goddard ME, Visscher PM, Price AL. Advantages and pitfalls in the application of mixed-model association methods. *Nat Genet.* 2014; 46:100–106. [PubMed: 24473328]
12. Bulik-Sullivan BK, et al. LD Score regression distinguishes confounding from polygenicity in genome-wide association studies. *Nat Genet.* 2015; 47:291–295. [PubMed: 25642630]
13. Höglinger GU, et al. Identification of common variants influencing risk of the tauopathy progressive supranuclear palsy. *Nat Genet.* 2011; 43:699–705. [PubMed: 21685912]
14. Irwin DJ, et al. Myelin oligodendrocyte basic protein and prognosis in behavioral-variant frontotemporal dementia. *Neurology.* 2014; 83:502–509. [PubMed: 24994843]
15. Cirulli ET, et al. Exome sequencing in amyotrophic lateral sclerosis identifies risk genes and pathways. *Science.* 2015; 347:1436–1441. [PubMed: 25700176]
16. Freischmidt A, et al. Haploinsufficiency of *TBK1* causes familial ALS and frontotemporal dementia. *Nat Neurosci.* 2015; 18:631–636. [PubMed: 25803835]
17. Skol AD, Scott LJ, Abecasis GR, Boehnke M. Joint analysis is more efficient than replication-based analysis for two-stage genome-wide association studies. *Nat Genet.* 2006; 38:209–213. [PubMed: 16415888]
18. Nicolae DL, et al. Trait-associated SNPs are more likely to be eQTLs: annotation to enhance discovery from GWAS. *PLoS Genet.* 2010; 6:e1000888. [PubMed: 20369019]
19. Ramasamy A, et al. Genetic variability in the regulation of gene expression in ten regions of the human brain. *Nat Neurosci.* 2014; 17:1418–1428. [PubMed: 25174004]
20. Wray NR, et al. Pitfalls of predicting complex traits from SNPs. *Nat Rev Genet.* 2013; 14:507–515. [PubMed: 23774735]
21. Johnston CA, et al. Amyotrophic lateral sclerosis in an urban setting: a population based study of inner city London. *J Neurol.* 2006; 253:1642–1643. [PubMed: 17219036]
22. Lee SH, et al. Estimating the proportion of variation in susceptibility to schizophrenia captured by common SNPs. *Nat Genet.* 2012; 44:247–250. [PubMed: 22344220]
23. Pers TH, et al. Biological interpretation of genome-wide association studies using predicted gene functions. *Nat Commun.* 2015; 6:5890. [PubMed: 25597830]
24. Ramakrishnan NA, Drescher MJ, Drescher DG. The SNARE complex in neuronal and sensory cells. *Mol Cell Neurosci.* 2012; 50:58–69. [PubMed: 22498053]
25. Ferraiuolo L, Kirby J, Grierson AJ, Sendtner M, Shaw PJ. Molecular pathways of motor neuron injury in amyotrophic lateral sclerosis. *Nat Rev Neurol.* 2011; 7:616–630. [PubMed: 22051914]
26. Lai CK, et al. Functional characterization of putative cilia genes by high-content analysis. *Mol Biol Cell.* 2011; 22:1104–1119. [PubMed: 21289087]
27. Ma X, Peterson R, Turnbull J. Adenylyl cyclase type 3, a marker of primary cilia, is reduced in primary cell culture and in lumbar spinal cord *in situ* in G93A SOD1 mice. *BMC Neurosci.* 2011; 12:71. [PubMed: 21767396]

28. Krohn K, et al. Immunochemical characterization of a novel mitochondrially located protein encoded by a nuclear gene within the DFNB8/10 critical region on 21q22.3. *Biochem Biophys Res Commun.* 1997; 238:806–810. [PubMed: 9325172]
29. Fang X, et al. The NEK1 interactor, C21orf2, is required for efficient DNA damage repair. *Acta Biochim Biophys Sin (Shanghai).* 2015; 47:834–841. [PubMed: 26290490]
30. Vérièpe J, Fossouo L, Parker JA. Neurodegeneration in *C elegans* models of ALS requires TIR-1/Sarm1 immune pathway activation in neurons. *Nat Commun.* 2015; 6:7319. [PubMed: 26059317]
31. Delaneau O, et al. Integrating sequence and array data to create an improved 1000 Genomes Project haplotype reference panel. *Nat Commun.* 2014; 5:3934. [PubMed: 25653097]
32. Howie B, Marchini J, Stephens M. Genotype imputation with thousands of genomes. *G3 (Bethesda).* 2011; 1:457–470. [PubMed: 22384356]

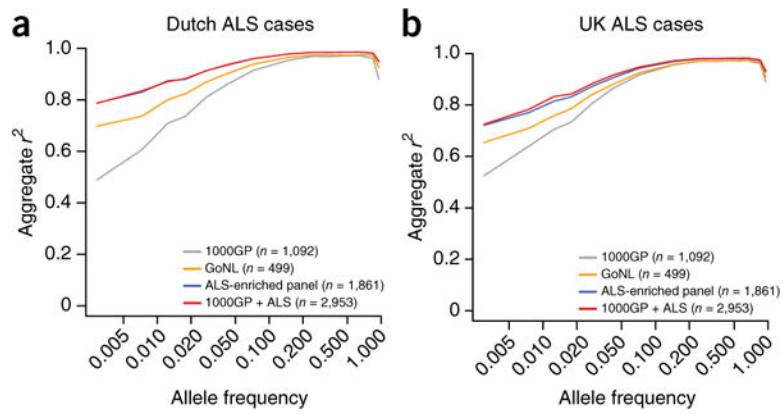


Figure 1. Comparison of imputation accuracy. (a,b) Aggregate r^2 values between imputed and sequenced genotypes on chromosome 20 are shown when using different reference panels for imputation. Allele frequencies were calculated from the Dutch samples included in the Genome of the Netherlands (GoNL) cohort. The highest imputation accuracy was achieved when imputing from the merged custom and 1000 Genomes Project (1000GP) panel. The difference in accuracy was most pronounced for low-frequency alleles (frequency 0.5–10%) in ALS cases from both the Netherlands (a) and the UK (b).

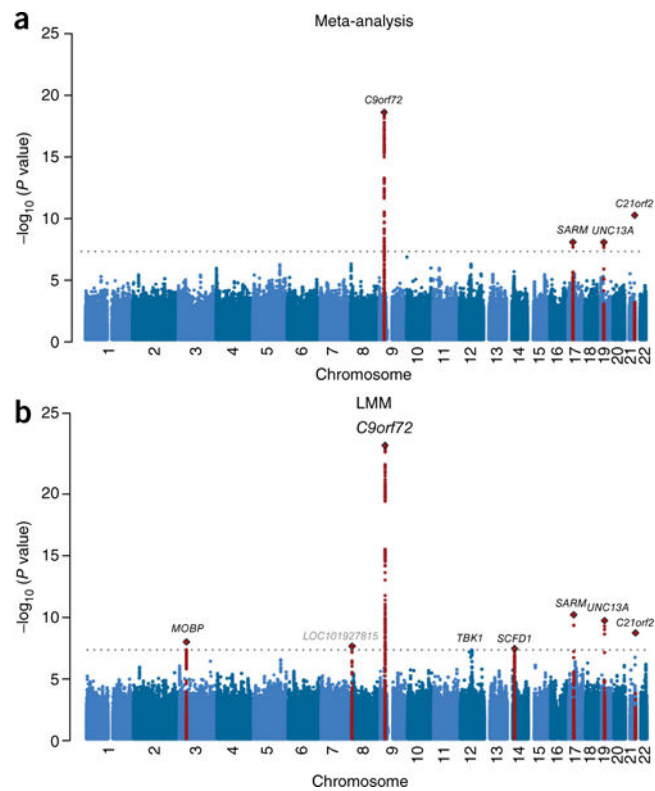


Figure 2. Meta-analysis and LMM associations. (a) Manhattan plot for the meta-analysis results. This approach yielded four genome-wide-significant associations. The associated SNP in *C21orf2* is a nonsynonymous variant not found to be associated in previous GWAS. (b) Manhattan plot for the LMM results. This analysis yielded three loci in addition to those identified by meta-analysis with associations that reached genome-wide significance (*MOBP*, *LOC101927815* and *SCFD1*). The association for SNPs in the previously identified ALS risk gene *TBK1* approached genome-wide significance ($P = 6.6 \times 10^{-8}$). As the *C21orf2* SNP was removed from a Swedish stratum because of $\text{MAF} < 1\%$, this SNP was tested separately, but it is presented here together with all SNPs with $\text{MAF} > 1\%$ in all strata. *LOC101927815* is shown in gray because the association for this locus could not be replicated. Loci are labeled by the name of the nearest gene. The dotted lines correspond to the significance threshold of $P = 5 \times 10^{-8}$.

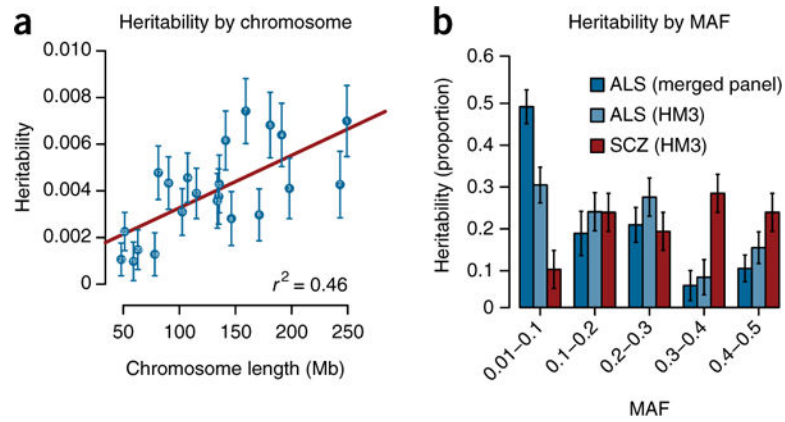


Figure 3. Partitioned heritability. (a) Heritability estimates for each chromosome were significantly correlated with chromosome length ($P = 4.9 \times 10^{-4}$). (b) For ALS, there was a clear trend where more heritability was explained by the low-frequency alleles. This effect was still observed when, for a fair comparison between ALS and a previous study partitioning heritability for schizophrenia (SCZ) using identical methods²², SNPs present in HapMap 3 (HM3) were included. Error bars correspond to standard errors.

Table 1

Discovery and replication of new genome-wide significant loci

SNP	Discovery			Replication			Combined				
	MAF _{cases}	MAF _{controls}	OR	P_{meta}	P_{LMM}	MAF _{cases}	MAF _{controls}	OR	P	P_{combined}	I^2
rs75087725	0.02	0.01	1.45	8.65×10^{-11}	2.65×10^{-9}	0.02	0.01	1.65	3.89×10^{-3}	3.08×10^{-10}	0.00*
rs616147	0.30	0.28	1.10	4.14×10^{-5}	1.43×10^{-8}	0.31	0.28	1.13	2.35×10^{-3}	4.19×10^{-10}	0.00*
rs10139154	0.34	0.31	1.09	1.92×10^{-5}	4.95×10^{-8}	0.33	0.31	1.06	9.55×10^{-2}	3.45×10^{-8}	0.05*
rs7813314	0.09	0.10	0.87	7.46×10^{-7}	3.14×10^{-8}	0.12	0.10	1.17	7.75×10^{-3}	1.05×10^{-5}	0.80**

Genome-wide-significant loci from the discovery phase including 12,557 cases and 23,475 controls were directly genotyped and tested for association in the replication phase including 2,579 cases and 2,767 controls. The three top associated SNPs in the *MOBP* (rs616147), *SCFD1* (rs10139154) and *C21orf2* (rs75087725) loci replicated with associations in the same direction as in the discovery phase and an association in the combined analysis that exceeded that in the discovery phase. Cochran's Q test,

* $P > 0.1$,

** $P = 4.0 \times 10^{-6}$.

MAF, minor allele frequency; OR, odds ratio, P_{meta} , meta-analysis P value; P_{LMM} , linear mixed-model P value; P_{combined} , P value from meta-analysis of the associations in the discovery and replication phase.