



HAL
open science

Stratigraphy of the Hameima and lower Fahdene Formations in the Tadjerouine area (Northern Tunisia)

Abir Chihaoui, Etienne Jaillard, Jean-Louis Latil, Ihsen Zghal, Anne-Sophie Susperregui, Jamel Tourir, Jamel Ouali

► **To cite this version:**

Abir Chihaoui, Etienne Jaillard, Jean-Louis Latil, Ihsen Zghal, Anne-Sophie Susperregui, et al.. Stratigraphy of the Hameima and lower Fahdene Formations in the Tadjerouine area (Northern Tunisia). *Journal of African Earth Sciences*, 2010, 58 (2), pp.387-399. 10.1016/j.jafrearsci.2010.02.008 . hal-03937550

HAL Id: hal-03937550

<https://hal.science/hal-03937550v1>

Submitted on 13 Jan 2023

HAL is a multi-disciplinary open access archive for the deposit and dissemination of scientific research documents, whether they are published or not. The documents may come from teaching and research institutions in France or abroad, or from public or private research centers.

L'archive ouverte pluridisciplinaire **HAL**, est destinée au dépôt et à la diffusion de documents scientifiques de niveau recherche, publiés ou non, émanant des établissements d'enseignement et de recherche français ou étrangers, des laboratoires publics ou privés.

STRATIGRAPHY OF THE HAMEIMA AND LOWER FAHDENE FORMATIONS IN THE TADJEROUINE AREA (NORTHERN TUNISIA)

Abir CHIHAOUI ^a, Etienne JAILLARD ^b, Jean-Louis LATIL ^c, Ihsen ZGHAL ^d,
Anne-Sophie SUSPERREGUI ^a, Jamel TOUIR ^e, Jamel OUALI ^d

a Université de Grenoble, LGCA UMR 5025, Maison des Géosciences, BP 53, 38041 Grenoble Cedex 9, France. Abir.Echihaoui@ujf-grenoble.fr

b Université de Grenoble, IRD - LGCA UMR 5025, Maison des Géosciences, BP 53, 38 041 Grenoble Cedex 9, France. Etienne.Jaillard@ujf-grenoble.fr Fax : + 33 476 51 40 58.

c Le Maupas, 05300 Lazer par Laragne, France. g.r.e.g.b@wanadoo.fr

d Ecole Nationale d'Ingénieurs de Sfax, route de Soukra, BP W, 3038 Sfax, Tunisia. Ihsen_zghal@yahoo.fr

a Université de Grenoble, LGCA UMR 5025, Maison des Géosciences, BP 53, 38041 Grenoble Cedex 9, France. Anne-Sophie.Susperregui@insa-rennes.fr

e Faculté des Sciences de Sfax, Département des Sciences de la Terre, Route de la Soukra, km 3,5, Sfax 3018, Tunisia. Jamel.Touir@fss.rnu.tn

d Ecole Nationale d'Ingénieurs de Sfax, route de Soukra, BP W, 3038 Sfax, Tunisia. Ouali_j@yahoo.fr

Abstract

In the Tadjerouine area (NW of Central Tunisia) the incipient Albian transgression is materialised by alternating marls, limestones and sandstones (Hameima Fm) that overly massive platform carbonates (Serdj Fm). The ongoing transgression then gives way to a thick series of marls and shales with subordinate carbonate beds (Fahdene Fm). A detailed study of the Hameima Fm, previously ascribed to the Late Aptian, shows that it can be subdivided into three members, all of earliest Albian age (*Leymeriella tardefurcata* Zone), and its top is slightly diachronous. A similar study of the lower Shales of the Fahdene Fm demonstrates that they belong to the *Leymeriella tardefurcata* Zone and to the lower part of the *Douvilleiceras mammillatum* superzone. The overlying Allam limestones, formerly considered Middle Albian in age, are mainly of late Early Albian age (upper part of *Douvilleiceras mammillatum* Superzone and *Lyelliceras pseudolyelli* Zone), although an extension into the lower Middle Albian cannot be ruled out. The Allam limestones are abruptly overlain by a diachronous series of Late Albian shales (Middle Shales of Fahdene Fm), thus evidencing a stratigraphic hiatus of most of the Middle Albian and part of the early Late Albian. Our new data will lead to revise the range of some Aptian/Albian orbitolinids and Albian planktic foraminifera.

Key-words

Tunisia, Early Albian, ammonites, stratigraphy, biostratigraphy, foraminifera.

Introduction

Facies changes between platform and basin facies have long caused problems to stratigraphers because of lithologic lateral changes and of difficult biostratigraphic correlations between shelfal and basinal faunas. As an example, the transition between the Central Tunisian platform and Northern Tunisian basin is marked by both complete argillaceous successions and lateral facies changes, which make difficult the use of the current stratigraphic nomenclature. Although ammonite successions are known for a long time from the Aptian-Albian interval in northwestern Tunisia (Pervinquière, 1907; Dubourdiou, 1956; Burollet, 1956; Memmi, 1999), the ammonite biostratigraphy, the transition between platform and basin facies, and the chronology of the Albian transgression are still poorly understood.

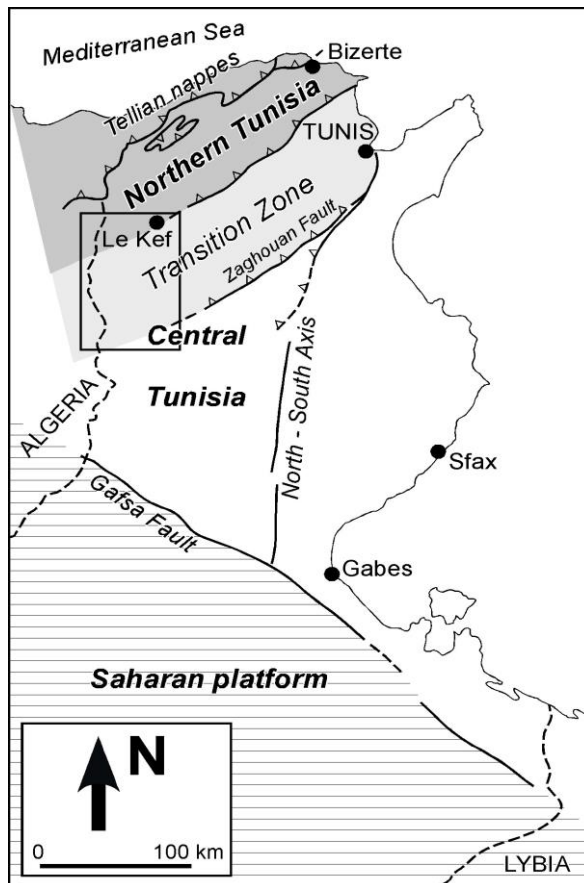
Moreover, the Aptian-Albian boundary is still a matter of debate, since the ammonite faunas are commonly endemic, the sedimentary environments are marked by abrupt changes related to widespread anoxic events or to sharp regressions followed by major eustatic transgressions (e.g. Erba, 1996; Hart et al., 1996; Kennedy et al., 2000; Hancock, 2001; Owen, 2002; Mutterlose et al., 2003), and significant synsedimentary tectonic events obscure the sedimentary or eustatic signals, provoking hiatuses, erosions and unconformities (e.g. Cotillon, 1989; Guiraud and Maurin, 1992; Chaabani and Razgallah, 2006).

The aim of this paper is to present a detailed stratigraphic study of the Hameima Formation and of the lower part of the Fahdene Formation, and a reassessment of the age and nature of the stratigraphic successions deposited during the Lower to Middle Albian. This study made us able: (1) to refine the stratigraphic nomenclature in the transition zone between platform and basin in Central and Northern Tunisia, (2) to refine the age of the lithologic units, and thus, (3) to provide a more reliable chronology of the tectonic and eustatic events that affect Tunisia during the latest Aptian - lower Upper Albian time-span. For this purpose, we studied several selected sections located around the city of Tadjerouine (36°6' N, 8°30' E), by means of field observations and extensive collections of ammonites.

Geological setting

During the Cretaceous, Tunisia is classically divided into three main paleogeographic zones, which are from south to North (Fournié and Pacaud, 1973; Zghal and Arnaud, 2005; Fig. 1) :

- the Saharian epicratonic platform, covered by thin, mainly clastic, continental to shallow marine deposits;
- the central Tunisian platform, marked by shallow marine, first siliciclastic, then calcareous deposits, which is bounded to the North by the present-day NE-SW trending thrust and folds belt that characterizes Northern Tunisia ; Central Tunisia includes the southern Chott depression that separates the Saharian and Central Tunisian platforms;
- the north Tunisian basin, which received thick marly deposits during most of the Cretaceous (Fig. 1).



During Albian times, the regional tectonic regime is thought to be dominated by a NE-SW to E-W extension, dominated by normal faults enhancing tilting of blocks and evaporite diapirs, both controlled by inherited structures (e.g. Ouali et al., 1986; Buroillet and Ellouz, 1986; Martinez et al., 1991; Ladeb et al., 1995; Zouari et al., 1999), although a short termed, intra-Albian transpressional regime has been locally reported (Bouaziz et al., 2002).

Tertiary deformations increase toward the North; they are marked in central Tunisia by open folds affecting previously faulted series, and in northern Tunisia by tighter folds associated with salt diapirs. The latter area is overthrust by the south verging Tellian nappes, which crop out along the coast.

Figure 1 : Paleogeographic sketch of Tunisia during Aptian - Albian times, and location of the studied area.

Our study area is located in northwestern Tunisia, at the transition between the central and northern Tunisian paleogeographic domains (Souquet et al., 1997). The little town of Tadjerouine is located south of Le Kef, close to the Algerian border. It is surrounded by scattered, faulted and folded massifs (Jebels), which morphologically dominate less deformed Late Cretaceous to Quaternary sedimentary cover (Fig. 2). They are usually made of massive Aptian carbonates (Serdj Formation), overlain by limestones, shales and marls of the Hameima and Fahdene formations. Six sections have been studied around these jebels, which are from Northwest to Southeast (Fig. 2) : (1) Jebel Harraba on the algerian border; (2) Henchir El Goussa area (North of the El Gara section of Buroillet 1956, p. 71), (3) North of Jebel Hameima (Dubourdiu, 1956, pp. 160-161 and 197-201; Buroillet, 1956, p. 66 and pp. 71-75), (4) Northwest of Jebel Slata (Buroillet, 1956, pp. 75-77; Charens section of Vila et al., 1995), (5) south of Jebel Djerissa (Buroillet, 1956, p. 77), and (6) across Jebel Bou el Haneche (Buroillet, 1956, p. 71) located North of Thala (Fig. 2).

Previous works

Following multidisciplinary scientific explorations carried out in the late XIXth century, the Cretaceous stratigraphy of Northern and Central Tunisia was first studied by Pervinquier (1907), who attempted to recognise the succession of the stratigraphic stages, through lithological and fossil collections (Pervinquier, 1907). But it is not before the 1950, that the biostratigraphy and lithostratigraphy of the Cretaceous series of Tunisia were studied and described in detail.

Castany (1951) published a geological synthesis and a geological map of the area, while Sainfeld (1952) studied Lead-Zinc mineralizations, mainly hosted in Aptian-Albian strata. Dubourdiu (1956) published a detailed description of numerous sections in western Algeria and Eastern Tunisia, associated with numerous fossil determinations, while Buroillet (1956), by means of numerous detailed field sections, established the stratigraphic nomenclature of the Cretaceous succession of Tunisia, which is still in use today (see M'Rabet, 1981; Buroillet et al., 1983; M'Rabet et al., 1995; Zghal and Arnaud, 2005).

Since then, Bismuth (1973) made a helpful synthesis of the Aptian-Albian stratigraphy, refining the location of faunas formerly quoted in the Hameima section, and correlating the latter with southern areas. Short synthesis on the stratigraphy and ammonite paleontology of the Lower Cretaceous of Tunisia were published by Burollet et al. (1983) and Memmi (1999), respectively. Robaszinsky et al. (1993a, 1993b, 2008) published detailed stratigraphic and sedimentological studies focused on the Albian-Cenomanian boundary, and on the Late Cretaceous, along sections located Southwest of Tadjerouine. Zghal (1994; Zghal et al., 1997) extensively studied the microfossils along the Hameima section (Tadjerouine area), confirming previous age assignments (Burollet, 1956; Bismuth, 1973). Finally, Vila et al. (1994, 1995, 2001; Ghanmi et al., 2001) provided numerous, although scattered, biostratigraphic data on the Aptian-Albian interval, and evidenced the presence of Lower Albian strata in the Hameima Formation, as did El Euch (1993) farther South. More recently, Zghal and Arnaud-Vanneau (2005) and Jaillard et al. (2005) presented preliminary results on the Aptian-Albian succession in the Tadjerouine area, and the paleontological study of our ammonite collections is under publication (Latil, 2010).

In the Tadjerouine area, Burollet (1956) divided the Aptian - Albian interval into: (1) The Serdj reefal massive limestones of probable Aptian age, the top of which may reach locally the Albian (Burollet 1956, p. 66), (2) the Hameima Formation (≈ 300 m), made of shales, dolomites, limestones and sandstones of approximately Late Aptian age, and (3) the Fahdene Formation, mainly made of dark marls and shales, which comprises several informal units:

- Lower shales (300 m): dark shales and marls, which include a noticeable "ammonite-rich horizon" ascribed to the "Clansayes zone", considered by Burollet (1956, p. 72) as earliest Albian, but now referred to the latest Aptian (Flandrin, 1965; Burollet et al., 1983),
- Allam limestones (180 m): black massive limestones and dark marls, ascribed to the Middle Albian,
- Middle Shales (280 m): black shales and marls, dated as Late Albian,
- Mouelha limestones (50 m): black laminated limestones of Late Albian age, and
- Upper Shales (more than 1200 m): black shales with some marly intercalations, of uppermost Albian ("Vraconnian", ≈ 400 m) and Cenomanian age (≈ 800 m).

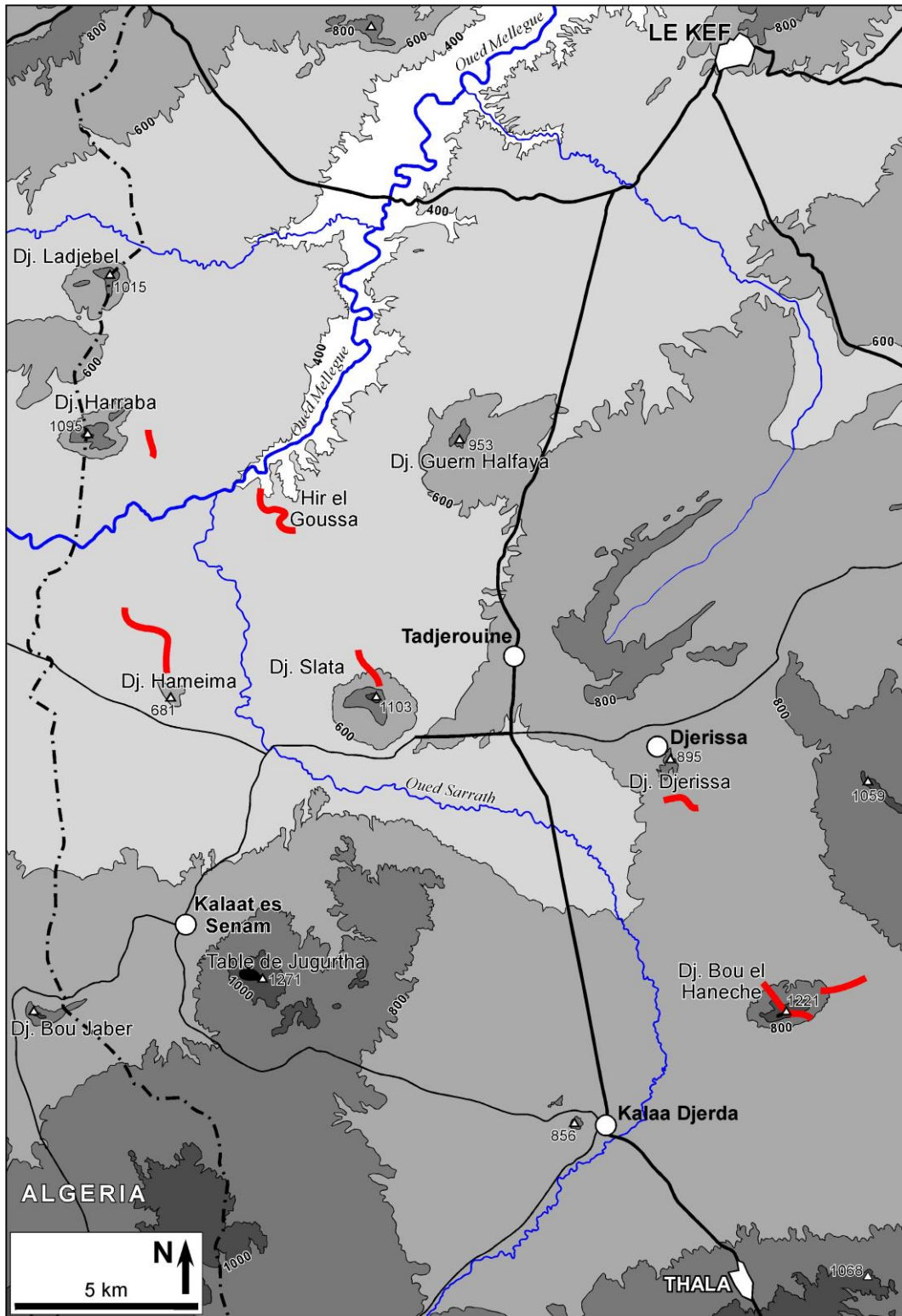


Figure 2 : Location map of the main studied sections (location on Fig. 1).

From Northwest to Southeast: Jebel Harraba, Sidi Embarka section; Henchir el Goussa, El Goussa section; Jebel Hameima section; Jebel Slata, Charens section; Jebel Djerissa, Djerissa section; Jebel Bou el Haneche, Bou el Haneche section.

The studied sections allowed us to examine the Hameima Formation, and the Lower Shales and Allam limestone units of the Fahdene Formation.

Lithostratigraphy and fauna

1. Serdj Formation

Burollet (1956) defined the "Serdj Limestones" as massive limestones and dolomites, rich in reefal to peri-reefal faunas such as rudistids, corals and benthic foraminifera. The Serdj Formation (M'Rabet, 1981), mainly of Aptian *p.p.* age is assumed to be diachronous, and its top may reach the Albian (Burollet, 1956). This assumption has been supported by a detailed study of the formation in its type location (Jebel Serdj, Northeastern Tunisia) by Tlatli (1980).

In Jebel Harraba, 30 meters below the top of the Serdj Formation, we found several specimens of Acanthohoplites, and two *Epicheloniceras* sp. of Late Aptian age (jacobi Zone). However, the latter seem to be reworked, since they are eroded, bored and phosphatised, and this latter lithology does not correspond to that of the surrounding shaly succession.

2. Hameima Formation

Burollet (1956) defined the "shales with sandy interbeds of Hameima" (now known as Hameima Formation, *e.g.* M'Rabet et al., 1995) as a "black to dark green shale succession, with numerous thick interbeds of sandstone, dolomite and biogenic limestone".

In the Tadjerouine area, the 150 to 230 m thick Hameima Formation directly overlies the Serdj Formation (Fig. 3). It is not exposed in El Goussa (Fig. 2), where the section begins at the top of the Hameima Formation. The basal contact is at the top of the uppermost thick, massive, rudistids and chondrodonts bearing limestone (or dolomite) bed of the Serdj Formation. The upper contact is at the top of the uppermost thick bed of sandstone (El Goussa and Hameima areas) or limestone (other sections), and at the base of the lowermost thick argillaceous marly interval of the Fahdene Formation. The Hameima Formation is mainly made of massive limestone levels, locally rich in orbitolinids, separated by thick marl intervals, and usually comprises sandstone intercalations. A laterally constant sandstone interval ("Clansayes Sandstones" of Vila et al., 1995) allows us to subdivide the Hameima Formation into three lithologic members (Fig. 3).

2.1. The Lower Member is 70 to 120 m thick, and rests on the massive carbonate bed of the top of the Serdj Formation. The top of this unit is marked in all sections by a thick limestone bed, usually caved by deep karsts, locally infilled by iron-rich mineralizations. This member mainly consists of marls and limestones, rich in orbitolinids at the base, with few beds of calcareous sandstones in the lower, and upper parts. Marly beds are rich in echinoids (sea urchins), bivalves, some brachiopods and gastropods, and scarce ammonites, while limestone beds display orbitolinids, pectinids and oysters. The Hameima section exhibits a dominantly marly succession, while limestone beds are more numerous in the Slata and Djerissa sections (Fig. 3). In the same way, the Djerissa and Bou el Haneche sections commonly exhibit crinoid-rich calcarenitic beds.

In the nearby section of Jebel Ouenza (Eastern Algeria), Dubourdieu (1956, p. 56) collected from this member *Knemiceras compressum* and *Douvilleiceras* gr. *albense-monile*, and concluded surprisingly with a latest Aptian age (Dubourdieu, 1956, p. 90-92). During our work, the Lower Member yielded few ammonites, identified as Acanthohoplites, *Parengonoceras* sp. and *Douvilleiceras* sp. nov.? from the Djerissa section. In the Slata section, the top of this Member yielded "*Hypacanthoplites*" *paucicostatus*, and *Parengonoceras* sp..

2.2. The 35 to 70 m thick Middle Member of the Hameima Formation is marked by the occurrence of abundant sandstone beds ("Clansayes Sandstones" of Vila et al., 1995). The lower part of the unit is usually made of marls and sandstones, with limestone beds in the Djerissa and Bou el Haneche sections (Fig. 3). The middle part is dominated by sandy marls, which grades upward into cross laminated sandstones. The top of the unit is made of thick, orbitolinid-rich limestones, which become thicker toward the Southeast (Djerissa and Bou el Haneche sections). In marls and sandstones, macrofossils mainly consist of oysters and pectinids, associated with subordinate echinoids, annelids, trigonids and other scarce bivalves, corals, gastropods and plant remains. In the Slata, Djerissa and Bou el Haneche sections, the uppermost orbitolinid limestones exhibit scarce annelids, oysters and corals. In the El Goussa and Hameima sections, the Hameima Formation ends up with thick sandstone

beds, whereas in the Slata, Djerissa and Bou el Haneche sections, the top is marked by massive orbitolinid rich limestones (Fig. 3).

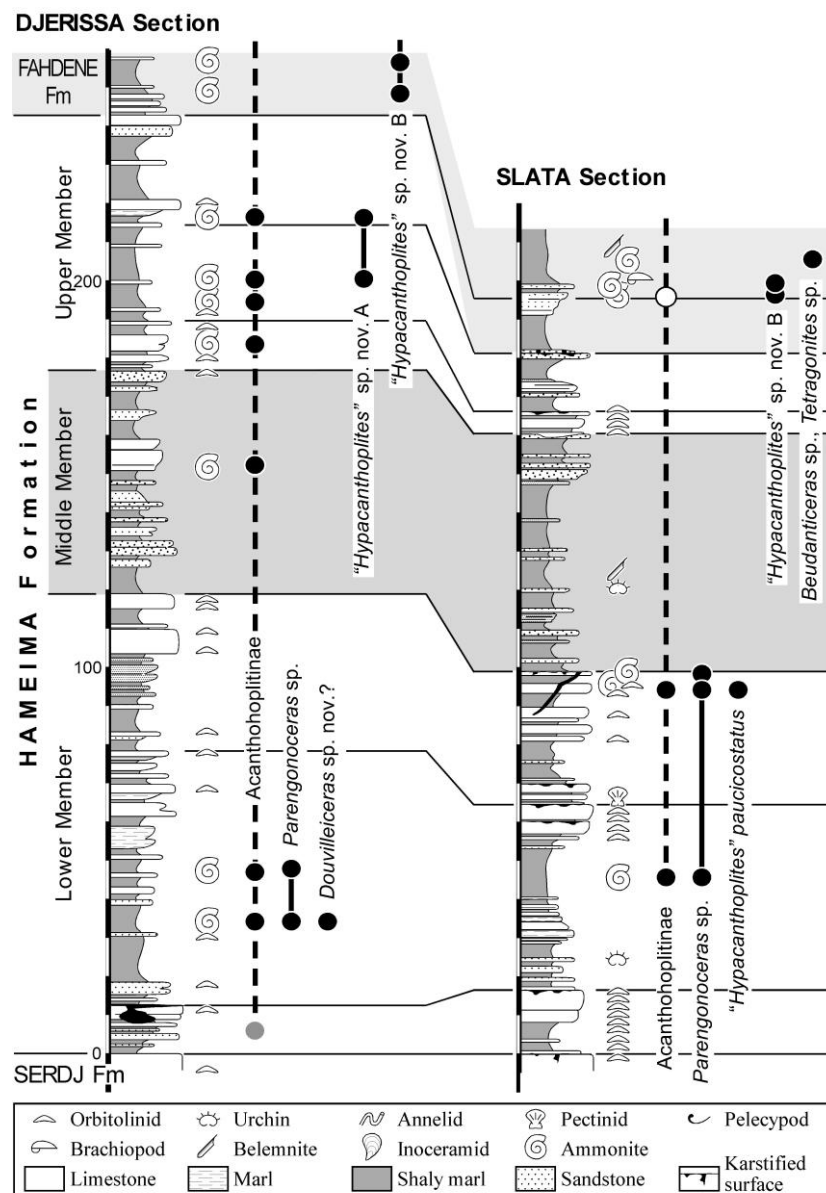


Figure 3 : Distribution of ammonites in the Hameima Formation, along the Djerissa and Slata sections. Grey dots: location of ammonites from the Harraba section; White dots: reworked ammonites.

The Middle Member yielded scarce, poorly preserved ammonites (Djerissa section), identified as Acanthohoplitinae. In the Hameima section, the top of the Middle Member yielded *Orbitolina (Mesorbitolina) parva* and *O. (M.) minuta* (Zghal, 1994; Zghal et al., 1997). However, Zghal and Arnaud-Vanneau (2005) quoted *Mesorbitolina parva* and *Praeorbitolina wienandsi*, the association of which is classically ascribed to the lower part of the Upper Aptian.

2.3. The Upper Member is 0 to 55 m thick, and exhibits variable successions. It mainly comprises marls and limestones, with subordinate sandy limestone beds (Djerissa section, Fig. 3), and includes glauconitic/phosphatic, or clast rich layers. The fauna consists of oysters, pectinids, pinnids, brachiopods (Bou el Haneche) and scarce ammonites. However, some massive limestone beds are still rich in orbitolinids, and locally in red algae and annelids. This unit seems to be thinner and richer in marls toward the Northwest (Slata section). Shallow karsts are visible on top of some beds of the Southeastern sections (Djerissa and Bou el Haneche, Fig. 3).

In a faulted outcrop located Southwest of Jebel Bou el Haneche, the Upper Member of the Hameima Formation yielded a *Douvilleiceras* sp. (determination Arnould-Saget, in Burollet, 1956; p. 71), indicating a Lower Albian age. Our ammonite fauna is made of Acanthohoplitinae. In Jebel Djerissa, we collected "*Hypacanthoplites*" sp. nov. A in the middle part of this member (Fig. 3).

3. Fahdene Formation

Burollet (1956) defined the "Fahdene marls and shales" (usually named Fahdene Formation, M'Rabet, 1981; Burollet et al., 1983; M'Rabet et al., 1995) as "a very thick series of marine, grey to black marls and shales, with a few beds of limestones or marly limestones", which "rest on the Serdj limestones, where present". The type locality of the Fahdene Formation is located in the centre of the Oued Bahloul anticline, Southeast of Makthar (Burollet, 1956). In this paper, we shall examine the Lower part of the Fahdene Formation, *i.e.* the Lower Shales, the Allam Limestones, and the base of the Middle Shales (Fig. 4).

3.1. The Lower Shale Member is 180 m (Bou el Haneche) to 400 m thick (El Goussa). Although it consists mainly of monotonous marl and shale accumulations, the unit exhibits calcareous to marly intercalations, thus defining a basal, median and upper shaly unit. This member has not been studied in the Djerissa section. The base of the Lower Shale Member is defined as the first thick shaly level overlying the uppermost massive sandstone or limestone bed of the Hameima Formation.

Figure 4 about here

- *The basal shales unit* is mainly known in the El Goussa and Hameima section, where it is 55-60 m thick (Fig. 4). It consists mainly of dark green shales, with few thin calcareous interbeds, and locally phosphatic nodules. In the Hameima section, the lower part of this unit is marked by a thickening upward series of bioturbated, sandy limestones, exhibiting storm laminations near the top. There, the fauna associated with the sandy limestones consists in ammonites, oysters, pectinids, trigonids, sea urchins, and scarce plant remains. This sandy interval seems to be lacking in the El Goussa section, where large scale slump structure can be observed. The upper shaly part of the unit yielded only ammonites, with scarce oysters and gastropods. In the Sлата section, this unit may be represented by a 15 m thick, undated shaly interval.

Ammonites collected from the basal shale units were determined as "*Hypacanthoplites*" *paucicostatus*, *?Parengonoceras* sp. and Acanthohoplitinae indet. in the lower part, and "*Hypacanthoplites*" *ouenzaensis*, *Douvilleiceras* sp. nov.?, *?Parengonoceras* sp. and "*Hypacanthoplites*" sp. in the upper part (Fig. 4). The occurrence of both "*H.*" *paucicostatus* and "*H.*" *ouenzaensis* indicates that the basal shales unit is at least in part coeval with the Upper Member of the Hameima Formation of the southeastern sections, thus indicating a lateral facies change from the Northwest to the Southeast.

- *The first carbonated interval* is 45 to 60 m thick, and corresponds to the "Ammonite-rich horizon" of Burollet (1956). In the Djerissa and Bou el Haneche sections, the Fahdene Formation seems to begin directly with the "Ammonite-rich horizon". In contrast to the underlying shales, the "Ammonite-rich horizon" consists of alternating limestones and dark bioturbated, argillaceous marls, locally rich in pyrite. In the Sлата section, this unit is represented by a 1 to 20 m thick series of coarse grained, bioclastic limestones, locally sandy. In the Hameima, Sлата and Bou el Haneche sections, it contains ammonites, associated with belemnites, sea urchin fragments, brachiopods, pectinids, oysters and other bivalves (Fig. 4), whereas in the El Goussa section, it only yielded ammonites and scarce belemnites.

From these layers, Burollet (1956, p. 74) and Dubourdieu (1956, p. 152, 160, 163) mentioned ammonite faunas made of *Douvilleiceras* and Acanthohoplitinae, ascribed to the "Clansayes zone". In the "Ammonite-rich horizon", we collected numerous specimens of "*Hypacanthoplites*" nov. sp., associated with *Douvilleiceras* sp. and desmoceratids (Fig. 4). This horizon has been recognized in all the studied sections.

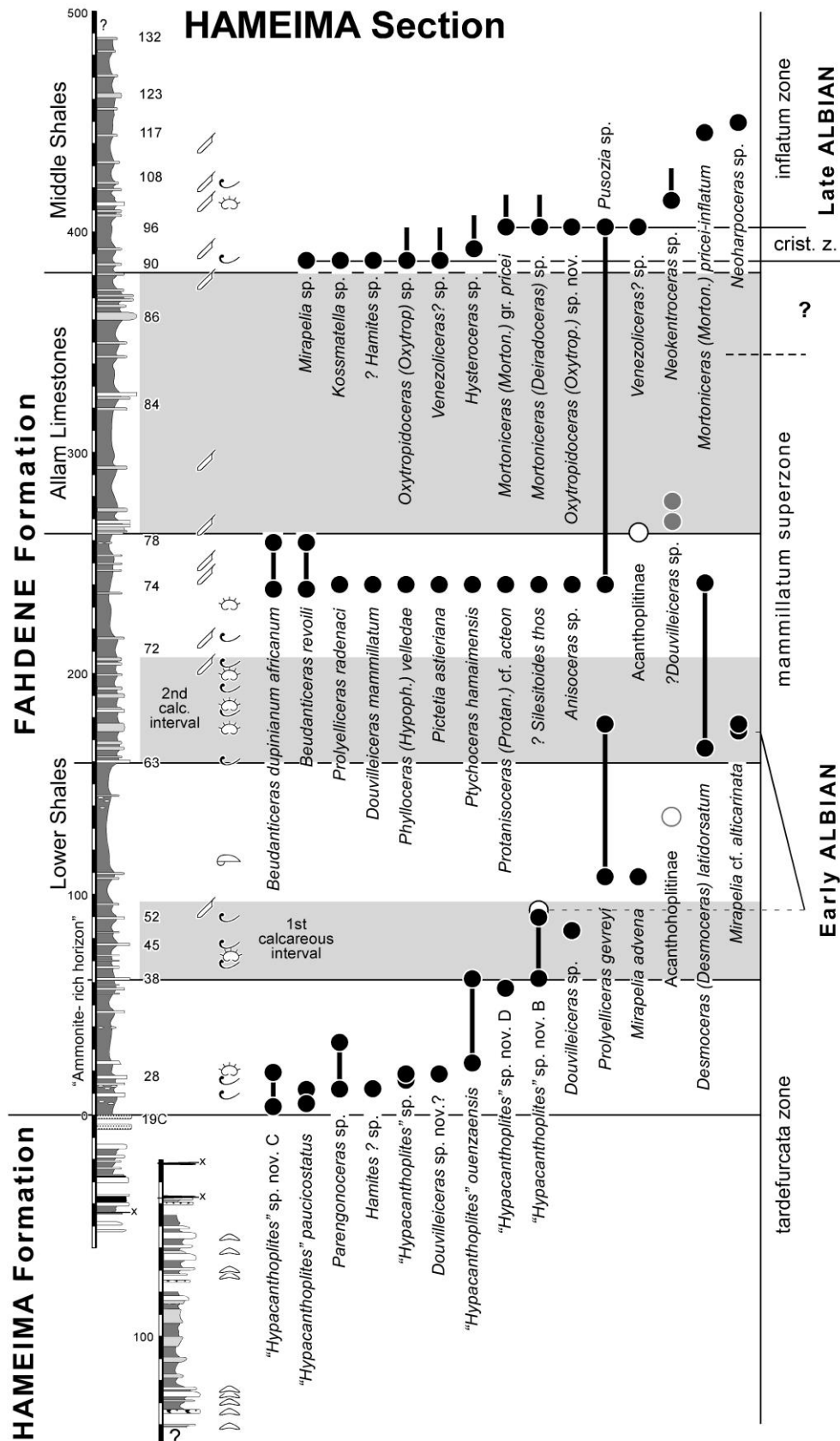


Figure 4 : Distribution of ammonites in the Fahdene Formation, along the Hameima section. Black dots: ammonites from the Hameima section; White dots: reworked ammonites. Shaded areas: carbonate intervals. Same caption as Fig. 3.

- *The intermediate shale unit* is 70 to 130 m thick (Fig. 4). It consists of dark shales, with scarce thin beds of marly limestones, containing abundant pyrite concretions, and locally dark green phosphatic nodules. No fauna but ammonites have been observed in the Hameima and El Goussa sections, while echinoids, oysters, pectinids and other bivalves occur in the Bou el Haneche section. Bioturbations are rare, and horizontal laminations are commonly observed. In the Slata section, the intermediate shaly unit is represented by a 35 m thick series of dark shales, yielding few poorly preserved pyritous ammonites.

The base of this unit is marked by the first local occurrence of *Prolyelliceras gevreyi*. The other collected ammonites consist of desmoceratids, *Prolyelliceras gevreyi*, *Mirapelia advena* and scarce reworked Acanthohoplitinae (Fig. 4).

- *The second carbonated interval* is 20 to 70 m thick (Fig. 4). In the El Goussa and Hameima sections, it consists of alternating shales with pyritous concretions, and bioturbated marly limestones. The base is usually marked by a calcareous bed containing phosphatized clasts, which forms a conspicuous correlation bed (Dubourdieu, 1956; Zghal, 1994; Zghal et al., 1997). The fauna content is dominated by belemnites, irregular echinoids and ammonites to the Northwest, and by pectinids, ammonites and subordinate brachiopods to the Southeast. Oysters and gastropods are also present. This unit seems to be reduced in the Bou el Haneche section (20 m). In the Slata section, the second carbonated interval is made of a 25 m thick succession of phosphatic, coarse grained bioclastic limestones, with few shaly intervals.

In this unit, we collected the following ammonites: *Prolyelliceras gevreyi* (only in the lower part), *Mirapelia cf. alticarinata*, *Beudanticeras* sp. and *Desmoceras (Desmoceras) latidorsatum*.

- *The upper shale unit* is 20 to 70 m thick, and is chiefly made of dark shales, rich in pyrite concretions, locally bioturbated, with few thin beds of marl (Fig. 4). Macrofossils are dominated by pyritous ammonites localised in few layers, and belemnites associated with subordinate brachiopods, pectinids and other bivalves. In the Slata section, it is 55 m thick and contains a few sea urchins. This unit thickens toward the Northwest.

The pyritous ammonite levels have been recognized by Pervinqui re (1907), Dubourdieu (1956) and Burollet (1956). In this unit, we collected the following ammonites : *Prolyelliceras radenaci*, *Douvilleiceras mammillatum*, *Beudanticeras revoili*, *B. dupinianum africanum*, *Phylloceras (Hypophylloceras) velleidae*, *Ptychoceras hamaimensis*, *Pictetia astieriana*, *?Silesitoides thos*, *Desmoceras* sp., *Protanisoceras (Protanisoceras) cf. acteon*, *Anisoceras* sp. and Puzosiinae (Fig. 4). In the Bou el Haneche section, the top of the unit yielded *Tegoceras mosense* (Fig. 5).

3.2. The Allam Limestone Member is 110 m (Hameima, Djerissa) to 180 m thick (El Goussa, Bou el Haneche) (Fig. 4 and 5). Burollet (1956) described the "Allam Limestones" as hard, fine-grained black limestones, which alternate with dark shales and marls, containing belemnites and poorly preserved ammonites (*Puzosia* sp.). He ascribed the Allam Limestones to "approximately the Middle Albian". Dubourdieu (1956) also ascribed this unfossiliferous unit to the Middle Albian.

According to our observations, the Allam Member is made of fine-grained black laminated limestones, interbedded within dark grey shales rich in pyrite, and containing locally small scale oil seeps. In the Djerissa section, the base of the unit is locally marked by a limestone bed containing phosphatized clasts, whereas in the Slata section, it is marked by bioclastic and finely sandy limestones, rich in phosphate and glauconite (Fig. 5). The uppermost part of the unit is commonly silicified (El Goussa, Hameima, Djerissa, Bou el Haneche), and often contains abundant, large limestone nodules. The fauna mainly consists of belemnites, associated with scarce ammonites, costulated or inoceramid-like small bivalves, and fish remains.

Figure 5 about here

From the Allam Limestone Member, we collected at the base : *Beudanticeras* sp., *UligHELLA?* sp., *?Douvilleiceras* sp., *Oxytropidoceras* sp., *Puzosia* sp. and Desmoceratids (Fig. 4 and 5). In the Djerissa and Bou el Haneche sections, the lower part (60 to 70 m) of the Allam Limestone Member yielded *Tegoceras camatteanum*, while its middle part yielded one specimen of *Lyelliceras pseudolyelli* in Bou el Haneche (Fig. 5). The upper part is barren of ammonites.

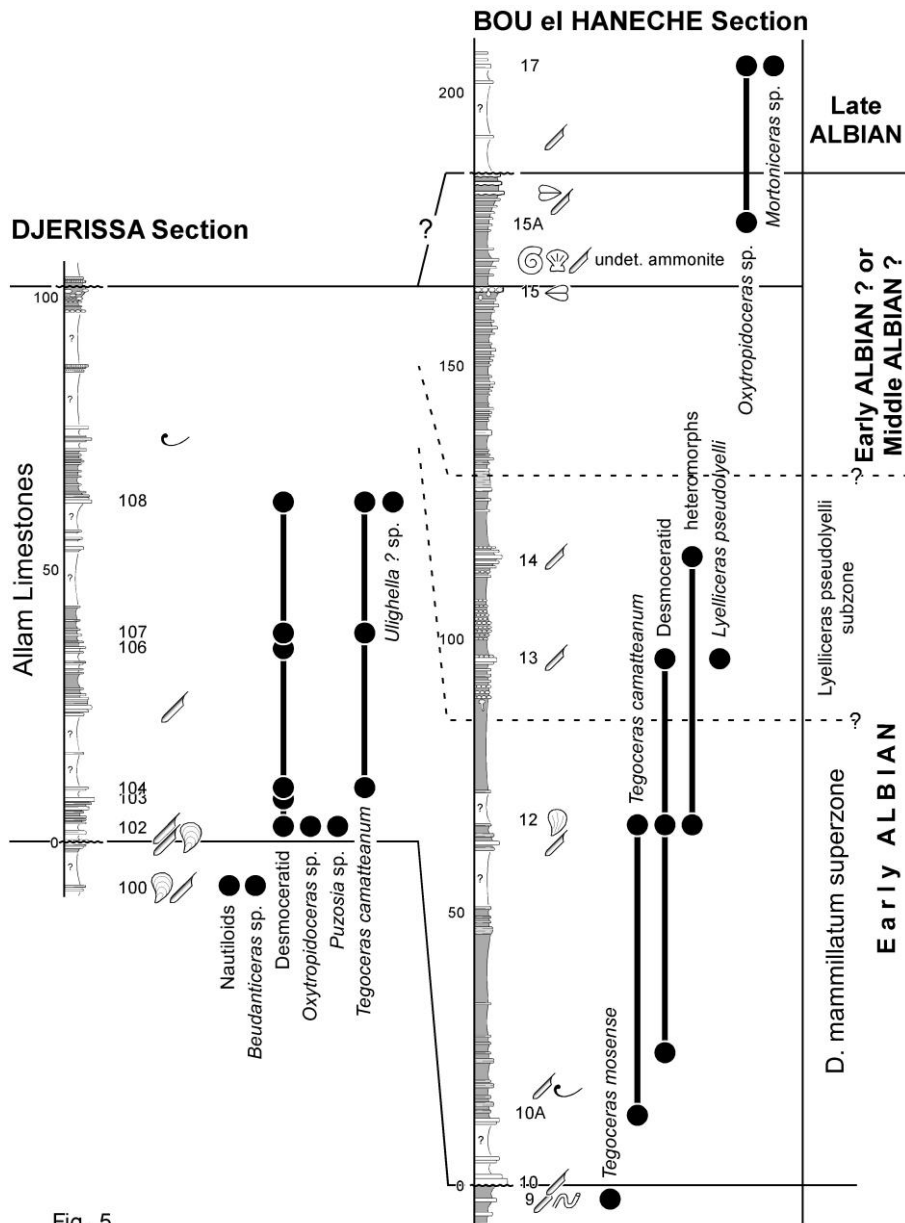


Fig. 5

Figure 5 : Distribution of ammonites in the Allam Limestones (Fahdene Formation), along the Djerissa and Bou el Haneche sections. Same caption as Fig. 3.

3.3. The Middle Shale Member of the Fahdene Formation rests conformably of the top, often silicified, of the Allam Limestone Member. Only the base of this member has been studied in detail, since good outcrops are scarce.

The Middle Shale Member is not silicified, and consists of dark shales with few thin beds of bioturbated marl. The macrofauna consists of numerous crushed ammonites, associated with less common belemnites, and scarce echinoids and bivalves. The very base of the unit is locally rich in glauconitic grains (El Goussa) or fine-grained sandstone (Hameima, Slata).

In the Hameima section, the very base (5 m) of the Middle Shale Member yielded ?*Hamites* sp., *Kosmatella* sp. and *Mirapelia* sp., together with *Venezoliceras* sp. and *Oxytropidoceras* (*Oxytropidoceras*) sp. (Fig. 4). Higher up in the Hameima section, and in other sections, the ammonite association consists of *Mortonicerias* (*Deiradoceras*) sp., *Mortonicerias* (*Mortonicerias*) sp., *Oxytropidoceras* sp., *Venezoliceras* sp., *Hysterocheras* sp., *Neokentroceras* sp., *Puzosia* sp., indicative of a Late Albian age (*Mortonicerias pricei* Zone).

Biostratigraphy

1. Top of the Serdj Formation

The occurrence in Jebel Harraba, 40 m below the top of the Serdj Formation, of reworked *Epicheloniceras* sp. (that normally indicates the Late Aptian) indicates that the age of the top of the Serdj Formation must be considered as latest Aptian or younger, *i.e.* close to the Aptian-Albian boundary.

In various places of Eastern Algeria and Central Tunisia, and especially in Jebel Hameima, the top of the Serdj Formation (or its equivalent) yielded the following association of benthic foraminifera : *Archaealveolina reicheli*, *Paracoskinolina tunesiana*, *Mesorbitolina texana*, *M. minuta*, as well as calpionellids: *Colomiella mexicana* and *C. recta* (Bismuth, 1973; Fourcade and Raoult, 1973; Tlatli, 1980; Cherchi and Schroeder, 1982; Zghal, 1994; Zghal et al., 1997). Although *A. reicheli* is locally mentioned in earliest Albian deposits (Dinarides; Husinec et al., 2000; Velic, 2007), *A. reicheli* and *P. tunesiana* are usually regarded as early Late Aptian in age (Bismuth, 1973; Peybernès, 1982; Zghal, 1994; Arnaud-Vanneau, 1998). On the other hand, the association of *M. texana* and *M. minuta* would indicate a Late Aptian age in Northern and Western Africa, although it reaches the Early Albian in Eastern Africa (Peybernès, 1982). However, since *C. recta* first occurs soon after the base of the Albian, the association of *C. mexicana* and *C. recta* indicates an earliest Albian age (Reháková and Michalik, 1997; Días-Brito, 1999 in Días-Brito and Ferré, 2001). This, combined with our ammonite findings, suggests that the age of the top of the Serdj Formation is close to the Aptian-Albian boundary. As a consequence, *A. reicheli* and *P. tunesiana*, as well as the *M. texana* - *M. minuta* association should be considered as reaching the latest Aptian, or even the earliest Albian (see discussion below).

2. Hameima Formation

The Lower Member of the Hameima Formation yielded Acanthohoplitinae, *Parengonoceras* sp., *Douvilleiceras* sp. nov.? (Plate 1, Fig. 1 and 2) and "*Hypacanthoplites*" *paucicostatus* (at the top). The Middle Member of the Hameima Formation did not yield diagnostic fauna, while the Upper Member of the Hameima Formation contains *Douvilleiceras* sp. (Burolet, 1956) and Acanthohoplitinae.

Douvilleiceras of the group of *D. leightonense* are known from the middle part of the Leymeriella tardefurcata Zone (sensu Owen, 2002) to the lower part of the Douvilleiceras mammillatum Zone (Owen, 1988; Kennedy et al., 2000), while parahoplitids (among which Acanthohoplitinae) became extinct before the end of the Leymeriella tardefurcata Zone (Kennedy et al., 2000). Therefore, the Hameima Formation is ascribed to the Leymeriella tardefurcata Zone (first ammonite zone of the Early Albian, Fig. 6), except the very base that may be of latest Aptian age, since it yielded only Acanthohoplitinae. Note that the *Douvilleiceras* specimens found in the Lower Member of the Hameima Formation (Dubourdieu, 1956; this work; Pl. 1) are the oldest known representatives of the genus *Douvilleiceras* in North Africa, providing, however, an unequivocal Lower Albian age for these beds. The ontogeny of the tunisian specimen with persistent primitive morphology on early whorls, clearly differentiates this specimen from all other known *Douvilleiceras* (Latil, 2010). It probably deserves a species status, but our material is not sufficiently well preserved for that.

3. Biostratigraphic discussion

Zghal (1994; Zghal et al., 1997) reported *Mesorbitolina parva* and *M. minuta* from the upper part of the Lower Member of the Hameima Formation, and ascribed this unit to the Late Aptian. More recently, Zghal and Arnaud-Vanneau (2005) mentioned *Mesorbitolina parva* and *Praeorbitolina wienandsi* from the same beds, suggesting an age close to the Early to Late Aptian boundary. The currently admitted age of benthic foraminifers such as *A. reicheli*, *P. tunesiana*, *M. texana*, *M. minuta*, and *M. parva* has been mainly determined using stratigraphic sections bearing both foraminifers and ammonites in Algeria and Tunisia (*e.g.* Fourcade et Raoult, 1973; Bismuth, 1973; Cherchi and Schroeder, 1982). The conflicting ages indicated by ammonites and benthic foraminifers in the studied sections seem to arise mainly from two facts.



Plate 1. Albian ammonites from the Hameima Formation and from the Lower Shales of the Fahdene Formation.

- 1** 1: *Douvilleiceras* sp. nov. ?, FSL.596316, Level 4b of SW Ouenza section, Algeria (Dubourdieu, 1956, p. 56). Lower part of *Leymeriella tardefurcata* zone, early Lower Albian. (x 1)
- 2** 2: *Douvilleiceras* sp. nov. ?, UJF-ID. 10715, bed J.O, Jebel Jerissa section, Tunisia. Lower Member of Hameima Fm, *Leymeriella tardefurcata* zone, early Lower Albian. (x 1)
- 3** 3: *Douvilleiceras* sp. nov. ?, UJF-ID. 10716, bed 28 of Hameima section, Jebel Hameima, Tunisia. Lower Shales of Fahdene Fm (Lower part), *Leymeriella tardefurcata* zone, early Lower Albian. (x 1)
- Repositories of specimens: FSL, Université Claude Bernard Lyon 1, France; UJF-ID, Université Joseph Fourier, Institut Dolomieu, Grenoble.

First, the ammonite fauna reported from these sections is mainly made up of species of Acanthohoplitinae, which are highly endemic forms, only rarely associated with cosmopolitan species. In the Ouenza massif (Algeria, about 30 km west of the Tajerouine area), Dubourdieu (1956) found, associated with numerous Acanthohoplitinae, a species determined as *Douvilleiceras* gr. *albense-monile* (Pl.1, Fig. 1) near the base of what is now called the Hameima Formation (40 to 80 m above the massive limestones equivalent to the Serdj Fm; Dubourdieu, 1956; p. 56). Although he acknowledged that this ammonite usually indicates a late Early Albian to earliest Middle Albian age, he ascribed this unit to the Late (not latest) Aptian because of the admitted range of the associated Acanthohoplitinae ammonites (Dubourdieu, 1956, p. 92). Conversely, near the base of the Fahdene Formation of the Hameima section, Burollet (1956) quoted in his “ammonite-rich horizon”, several Acanthohoplitinae and a *Douvilleiceras bigoureti*. He ascribed, therefore, this level to the Early Albian “Clansayes zone included” (e.g. Burollet, 1956; p. 72). However, following the conclusions of the colloquium of Lyon, 1963, the “Clansayesian stage” has been included into the Late Aptian (Flandrin, 1965), thus adding confusion to the age assignments of these Acanthohoplitinae faunas.

Second, in the sections described in the Constantine area, ammonites and benthic foraminifers have not been found in the same beds, and therefore, age assignments of the foraminifers remained speculative. In Kef Hahouner (NE of Constantine, Fourcade and Raoult, 1973), the upper part of a 200 m-thick series of massive limestones (“terme E”), contains *A. reicheli*, *P. tunesiana*, and *M. texana*, and is overlain by a 40 m-thick series of thinly bedded limestones, and then by nodular, ammonite-bearing limestones (“terme F” of Fourcade and Raoult, 1973). The ammonite fauna from the “terme F” was examined by Breistroffer (in Fourcade and Raoult, 1973; p. 233), who mentioned that “all these ammonites are too big and poorly preserved and do not allow reliable determinations”, and concluded nevertheless, that the fauna is most probably of Late Aptian (Gargasian) age. After quoting that some ammonite identifications suggest an older age (p. 233), Fourcade and Raoult (1973) concluded that *A. reicheli* and *P. tunesiana* are of Late Aptian (Gargasian) age.

Revising the same section, Cherchi and Schroeder (1982) questioned this age, and ascribed the “terme F” of Kef Hahouner to the latest Aptian (“Clansayesian”). On the other hand, Cherchi and Schroeder (1982) mentioned that in Jebel Dahar the *A. reicheli*-*P. tunesiana* association has been ascribed to the Albian. Finally, Cherchi and Schroeder (1982) mentioned that in Jebel Sidi Rehris (Constantine area), the *A. reicheli*-*P. tunesiana* association is found in the 50 m-thick upper part of a massive limestone series. These beds are located 20 m above a marly bed with *Hypacanthoplites* species of latest Aptian age (Late Clansayesian), and 10 m below a marl series that yielded *Desmoceras* species, of Early to Middle Albian age. Cherchi and Schroeder (1982) concluded that the *A. reicheli*-*P. tunesiana* association is of latest Aptian age, although the presented data only indicate a latest Aptian to Early Albian age for the *A. reicheli*-*P. tunesiana* association.

In the same work, Cherchi and Schroeder (1982) ascribed to the early Late Aptian (Gargasian) the microfauna found at the top of the Serdj Formation (*A. reicheli*-*P. tunesiana* and *C. mexicana*-*C. recta*) in the Hameima section, based on the fact that they are located 300 m below the “ammonite-rich horizon” of Burollet (1956), which they ascribed to the latest Aptian (“Clansayesian”). The same reasoning has been applied by Bismuth (1973), who ascribed to the early Late Aptian (Gargasian), the *A. reicheli* found at the top of the Serdj Formation, because they are located “*much below a fossiliferous horizon bearing ammonites of the Clansayes zone*” (Bismuth, 1973; p. 184). However, we already mentioned that the “ammonite-rich horizon” yielded a specimen of the *Douvilleiceras* genus (Burollet, 1956), that ensures an Early Albian age for this level.

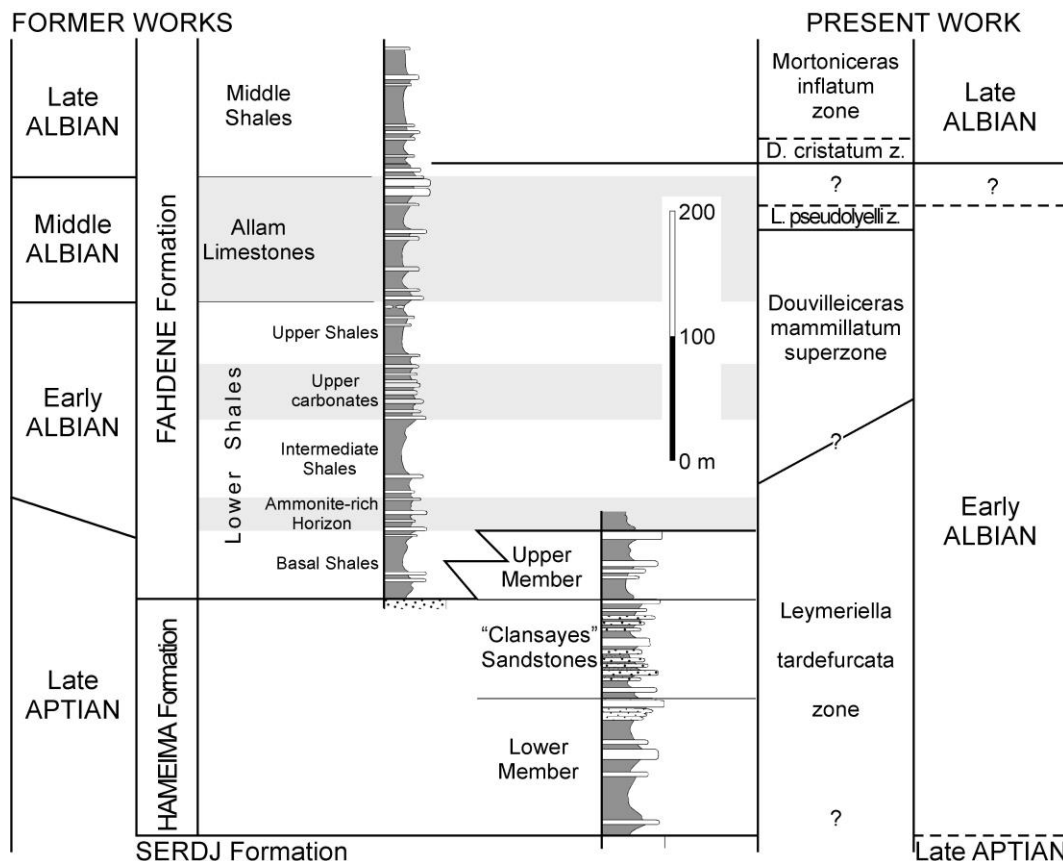


Figure 6. Synthetic stratigraphic column of the Albian series in the Tadjerouine area, and comparisons between former, and proposed age attributions. Same caption as Fig. 3.

This succession of misinterpretations from french-speaking workers explains probably why the *M. parva* - *M. texana* – *M. minuta* association has been assigned to the early Late Aptian in the french-speaking african countries (Tunisia, Algeria, Morocco, Sénégal), whereas it is considered of Late Aptian and earliest Albian age in english-speaking african countries (Tanzania, Somalia) (Peybernès, 1982). Whatever the case, our ammonite collections (Latil, 2010) indicate that the *A. reicheli* - *P. tunesiana* association, found at the top of the Serdj Formation, reaches the latest Aptian, and that *M.*

parva and *M. minuta*, determined from the Hameima Formation, reach the earliest Albian (L. tardefurcata Zone). The mention of *P. wienandsi* in the Hameima Formation probably results from a wrong identification.

4. Fahdene Formation: Lower Shale Member

In the basal shales unit and for most of the first carbonate interval, the association of *Douvilleiceras* sp. nov.? (Plate 1, Fig. 3) and Acanthohoplitinae indicates an age included in the Leymeriella tardefurcata Zone. The upper part of the first carbonate interval records the last local occurrence of Acanthohoplitinae (bed 52), followed by the first local occurrence of *P. gevreyi* (Fig. 4). Because *P. gevreyi* is known elsewhere in the Leymeriella tardefurcata Zone (Kennedy et al., 2000), the first carbonate interval is ascribed to this time-span (Fig. 6).

The intermediate shale unit of the Lower Shale Member yielded *P. gevreyi* and *M. advena*. Because of the known range of these two species (Kennedy et al., 2000), the intermediate shales can be ascribed to the late part of the Leymeriella tardefurcata Zone (Fig. 6).

The second carbonate interval records the first local occurrence of *M. cf. alticarinata* (bed 67) and the last local occurrence of *P. gevreyi* (bed 68, Fig. 4). Since *M. alticarinata* is only known from the Douvilleiceras mammillatum Zone (Owen, 1988), *P. gevreyi* seems to be not restricted to the Leymeriella tardefurcata Zone, as previously assumed (Kennedy et al., 2000). Whatever the case, the co-occurrence of these two species suggests an age comprised within the Douvilleiceras mammillatum Zone (middle and upper part of the Lower Albian; Fig. 6). The occurrence of *Tegoceras mosense* at the top of the Lower Shale Member suggests an age close to the Lyelliceras pseudolyelli Subzone (last ammonite subzone of Lower Albian age) for this level.

Zghal (1994) and Zghal et al. (1997) quoted the first local occurrence of *Hedbergella rischi* and *Ticinella primula* a few meters above the base of the second carbonate interval. This has been taken as indicative of a Middle Albian age (Zghal, 1994; Zghal et al., 1997), as assumed by several workers (e.g. Premoli-Silva and Slitter, 1995; Bellier and Moullade, 2002). However, this association has been reported from Early Albian (Luciani et al., 2004) or even Late Aptian strata (Cobianchi et al., 1997). Our data suggest that *T. primula* and *H. rischi* co-occur in Tunisia within the Douvilleiceras mammillatum superzone and before the beginning of the Lyelliceras pseudolyelli Zone, of late Early Albian age.

4. Fahdene Formation: Allam Limestone Member

Beside undiagnostic ammonites collected near the base of the unit, the Allam Limestones yielded several *T. camatteanum* in the lower third part of the succession, while *L. pseudolyelli* was found in the middle part of the Allam Limestone Member (Fig. 5). Therefore, the lower part of the member can be ascribed to the upper part of the Douvilleiceras mammillatum superzone, while its middle part is of Upper Lower Albian age (Lyelliceras pseudolyelli zone; Latil, 1995). However, the undated upper part of the section (40 to 60 m in the Jerissa and Bou el Haneche sections) may reach the base of the Middle Albian (Fig. 6). Therefore, in the Tadjerouine area, at least part of the Middle Albian substage seems to be lacking, since Upper Albian strata directly overly the Allam Limestone Member (see below).

5. Fahdene Formation: Middle Shales Member

At the base of the Middle Shales Member of the Hameima section, evaluate forms of *Venezoliceras* sp. and *Oxytropidoceras* (*Oxytropidoceras*) sp. suggest an age within the Dipoloceras cristatum Zone (first ammonite zone of the Upper Albian; Fig. 6). This ammonite association has not been found in the other sections of the Tadjerouine area. A few meters above, the occurrence of *Mortoniceras* (*M.*) gr. *pricei* and *Mortoniceras* (*Deiradoceras*) sp. indicates the *Mortoniceras pricei* Zone (second ammonite zone of the Upper Albian). At the base of the Middle Shales Member of the Hameima section, the first occurrence of planktic foraminifera such as *Ticinella roberti*, *T. gr. raynaudi* and *Biticinella breggiensis* support a Late Albian age (Zghal, 1994; Zghal et al., 1997).

Therefore, the stratigraphic hiatus of Middle Albian age seems to be followed by a diachronous transgressive series, since the base of the Upper Albian Middle Shale Member of the Fahdene

Formation would belong to the *Dipoloceras cristatum* Zone or to the *Mortoniceras pricei* Zone, according to the sections.

Conclusions

In the Tajerouine area, the latest Aptian - early Late Albian interval presents a rather constant lithological succession (except in Jebel Slata), the age of which, however, may vary according to the locations.

In all sections, the Hameima Formation is of Early Albian age (middle part of *Leymeriella tardefurcata* Zone). However, the upper Member of the Hameima Formation, made of marls and orbitolinid limestones in the southeastern sections (Fig. 3), is coeval with ammonite bearing shales, marls and subordinate sandstones deposited in the Northwestern sections (base of the Lower Shale Member of Fahdene Fm, Fig. 4). The boundary between the Hameima and Fahdene formations is, therefore, diachronous (older in the Northwest than in the Southeast; Fig. 6).

Although its base is heterochronous, the Lower Shale Member of the Fahdene Formation is of Early Albian age (*Leymeriella tardefurcata* Zone, and *Douvilleiceras mammillatum* Zone). This lithological unit thickens toward the Northwest, illustrating the paleogeographic transition between the Central Tunisian platform and the North Tunisian Basin.

Finally, the Allam Limestone Member is mainly of late Early Albian age (late *Douvilleiceras mammillatum* Zone and *Lyelliceras pseudolyelli* Zone), although its upper part may belong in part to the early Middle Albian (Fig. 5 and 6). It is directly overlain by early Late Albian shales (Middle Shale Member of Fahdene Fm), the base of which seems to be slightly diachronous. This, together with the probable hiatus of most of the Middle Albian substage (Fig. 6), suggests a major tectonic and/or sedimentary event during the Middle Albian.

These new biostratigraphic data would lead to revise the stratigraphic range of some foraminifers. The benthic foraminifers *Archaealveolina reicheli* and *Paracoskinolina tunesiana* seem to reach the latest Aptian, while *Mesorbitolina texana* and *M. minuta* reach the earliest Albian (*Leymeriella tardefurcata* Zone). In the same way, the planktic foraminifers *Hedbergella rischi* and *Ticinella primula* appear in the late Early Albian in Tunisia.

Acknowledgements

The results presented here were obtained thanks to scientific agreements between the universities of Grenoble (France) and Sfax (Tunisia) (CMCU project 2002-05, and Partenariat H. Curien Utique 2006-09). We are indebted to T. Saucède (Dijon) and M. Aly (Cairo, Egypt) for their participation to field work, to E. Robert (Grenoble) and L. Bulot (Marseille) for their contributions to ammonites identification, and to A. Arnaud-Vanneau and H. Arnaud (Grenoble) for highlighting discussions. We also thank two anonymous reviewers for their useful and very constructive remarks, which made more complete this work.

References

- Arnaud-Vanneau, A. (Coordinator), 1998. Larger benthic foraminifera. In: Hardenbol, J., Jacquin, T., Farley, M.B., de Graciansky, P.-C., Vail, P. (Eds.), *Cretaceous biochronostratigraphy*. SEPM Special Publication 60, chart 5.
- Bellier, J.-P., Moullade, M., 2002. Lower Cretaceous planktonic foraminiferal biostratigraphy of the Western North Atlantic (ODP LEG 171B), and taxonomic clarification of key index species. *Revue de Micropaléontologie* 45, 9-26.
- Bismuth, H., 1973. Réflexions stratigraphiques sur l'Albo-Aptien dans la région des djebels Douleb et Semmama et son environnement (Tunisie du Centre-Nord). *Annales des Mines et de la Géologie*, 6, Livre Jubilaire M. Solignac, 179-212, Tunis.
- Bouaziz, S., Barrier, E., Soussi, M., Turki, M.M., Zouari, H., 2002. Tectonic evolution of the northern African margin in Tunisia from paleostress data and sedimentary record. *Tectonophysics* 357, 227-253.

- Burollet, P.F., 1956. Contribution à l'étude stratigraphique de la Tunisie Centrale. *Annales des Mines et de la Géologie* 18, 350 pp., 22 pl. h.t., Tunis.
- Burollet, P.F., Memmi, L., M'Rabet, A., 1983. Le Crétacé inférieur de Tunisie. Aperçu stratigraphique et sédimentologique. *Zitteliana* 10, 255-264.
- Burollet, P.F., Ellouz, N., 1986. L'évolution des bassins sédimentaires de la Tunisie centrale et orientale. *Bulletin des Centres de Recherche de Pau - SNPA* 10, 49-68.
- Castany, G., 1951. Etude géologique de l'Atlas tunisien oriental. *Annales des Mines et de la Géologie* 8, 632 p., 30 pl. h.t., Tunis.
- Chaabani, F., Razgallah, S., 2006. Aptian sedimentation : an example of interaction between tectonics and eustatics in Central Tunisia. *Geological Society, London, Special Publication* 262, 55-74.
- Cherchi, A., Schroeder, R., 1982. *Dictyoconus algerianus* n. sp., grand foraminifère de l'Aptien supérieur de la plaque africaine (marge septentrionale). *C. R. Académie des Sciences Paris* 295, II, 77-82.
- Cobianchi, M., Luciani, V., Bosellini, A., 1997. Early Cretaceous nannofossils and planktonic foraminifera from northern Gargano (Apulia, southern Italy). *Cretaceous Research* 18, 249-293.
- Cotillon, P., 1989. Les temps médio-crétacés : une singularité au cours de l'histoire du Phanérozoïque ? *Geobios, Mémoire Spécial* 11, 11-24.
- Días-Brito, D., Ferré, B. (2001). Albian roveacrinids (stemless crinoids) in the Albian carbonates of the offshore Santos Basin, southeastern Brazil: stratigraphic, palaeobiogeographic and palaeoceanographic significance. *Journal of South American Earth Sciences* 14, 203-218.
- Dubourdieu, G., 1956. Etude géologique de la région de l'Ouenza (Confins Algéro-Tunisiens). *Publications du Service de la Carte Géologique d'Algérie* 10, 659 p.
- El Euch, H., 1993. La Tunisie du Centre-Ouest de l'Aptien à l'Actuel : Tectonique coulissante, dynamique sédimentaire associée et évolution du champ de contraintes Mio-Plio-Quaternaire. Thesis, Tunis II University, 261 pp., unpublished.
- Erba, E., 1996. The Aptian stage. *Bulletin de l'Institut Royal des Sciences Naturelles de Belgique* 66, Supplément, 31-43.
- Flandrin, J., 1965. Rapport sur l'étage Aptien. in : Colloque sur le Crétacé inférieur (Lyon, 1963), *Mémoire BRGM* 34, 227-234.
- Fourcade, E., Raoult, J.-F., 1973. Crétacé du Kef Hahouner et position stratigraphique de "*Ovalveolina*" reicheli P. de Castro (série septentrionale du môle néritique du Constantinois, Algérie). *Revue de Micropaléontologie* 15, 227-246.
- Fournié, D., Pacaud, M., 1973. Esquisses sédimentologiques et paléogéographiques sur le Crétacé inférieur de Tunisie, du Berriasien au Barrémien. *Annales des Mines et de la Géologie* 26, Livre Jubilaire M. Solignac, 149-168.
- Ghanmi, M., J.-M. Vila, Ben Youssef, M., Bouhlel, S., Zargouni, F., 2001. Vers l'abandon du modèle de diapir en champignon anté-vraconien au Djebel Sлата: découverte sur son flanc nord-ouest d'Albien inférieur (marnes et calcaires à mélobésiées) et d'Albien moyen (marno-calcaires à débris de Trias), à leur place dans une série à l'endroit. *Notes du Service Géologique de Tunisie* 68, 55-59, Tunis.
- Guiraud, R., Maurin, J.-C., 1992. Early Cretaceous rifts of Western and Central Africa: an overview. *Tectonophysics* 213, 153-168.
- Hancock, J., 2001. A proposal for a new position for the Aptian/Albian boundary. *Cretaceous Research* 22, 677-683.
- Hart, M., Amédéo, F., Owen, H., 1996. The Albian stage and substage boundaries. *Bulletin de l'Institut Royal des Sciences Naturelles de Belgique* 66, Supplément, 45-56.
- Husinec, A., Velic, I., Fucek, L., Vlahovic, L., Maticec, D., Ostric, N., Korbar, T. (2000). Mid Cretaceous orbitolinid (Foraminiferida) record from the islands of Cres and Losinj (Croatia) and its regional stratigraphic correlation. *Cretaceous Research*, 21, 155-171.
- Jaillard, E., Latil, J.-L., Echihaoui, A., Zghal, I., 2005. Albian sedimentation in the Tadjerouine area. Livret-guide excursion, Aptian-Turonian events in Central Tunisia, *Géologie Alpine, série Spéciale* 5, 105-124.
- Kennedy, W.J., Gale, A.S., Bown, P.R., Caron, M., Davey, R.J., Gröke, D., Wray, D.S., 2000. Integrated stratigraphy across the Aptian-Albian boundary in the Marnes Bleues, at the Col de Pré-Guittard, Arnavon (Drôme), and at Tartonne (Alpes de Haute-Provence), France: a candidate Global Boundary Stratotype Section and Boundary point for the base of the Albian stage. *Cretaceous Research* 21, 591-720.
- Ladeb, F., Horrenberger, J.-C., Cailleux, Y., Zargouni, F., 1995. Structures synsédimentaires mésoscopiques associées à la distension aptienne en Tunisie centrale (Dj. Semmama). *Comptes Rendus à l'Académie des Sciences de Paris* 321, IIa, 333-338.
- Latil, J.-L., 1995. Les *Lyelliceratinae* Spath, 1921 (Ammonitina, Ammonoidea) de l'Albien inférieur et moyen dans le bassin de Paris et sur les bordures du bassin vocontien : Stratigraphie, paléobiogéographie et

- taxonomie. In: Bulot L.-G., Argot M., Arnaud H. (Eds.), Lower Cretaceous Cephalopod biostratigraphy of the Western Tethys. *Géologie Alpine, mémoire Hors Série* 20, 327-381.
- Latil, J.-L., 2010. Lower Albian ammonites from Central Tunisia and adjacent areas of Algeria. *Revue de Paléobiologie, Genève*, in press.
- Luciani, V., Cobianchi, M., Jenkyns, H., 2004. Albian high-resolution biostratigraphy and isotope stratigraphy : The Coppa della Nuvola succession of the Gargano Promontory (Southern Italy). *Eclogae geologicae Helveticae* 97, 77-92.
- Martinez, C., Chikhaoui, M., Truillet, R., Ouali, J., Creuzot, G., 1991. Le contexte géodynamique de la distension albo-aptienne en Tunisie septentrionale et centrale : structuration éocrétacée de l'Atlas tunisien. *Eclogae geologicae Helveticae* 84, 61-82.
- Memmi, L., 1999. L'Aptien, et l'Albien de Tunisie: Biostratigraphie à partir de ammonites. *Bulletin de la Société géologique de France* 170, 303-309.
- M'Rabet, A., 1981. Stratigraphie, sédimentation et diagenèse carbonatée des séries du Crétacé inférieur de Tunisie Centrale. Thèse es Sciences Université Paris XI-Orsay, 540 pp.
- M'Rabet, A., Mejri, F., Burollet, P.F., Memmi, L., Chandoul, H., 1995. Catalog of type sections in Tunisia: Cretaceous. *Entreprise Tunisienne des Activités Pétrolières-ETAP, Mémoire* 8, 123 p.
- Mutterlose, J., Bornemann, A., Luppold, F.W., Owen, H.G., Ruffell, A., Weiss, W., Wray, D., 2003. The Vörhum section (northwest Germany) and the Aptian/Albian boundary. *Cretaceous Research* 24, 203-252.
- Ouali, J., Martinez, C., Khebbi, M., 1986. Caractères de la tectonique crétacée en distension au jebel Kebar (Tunisie centrale). *Géodynamique* 1, 3-12, Paris.
- Owen, H.G., 1988. The ammonite zonal sequence and ammonite taxonomy in the Douvilleiceras mammillatum Superzone (Lower Albian) in Europe. *Bulletin of the British Museum of Natural History* 44, 177-231.
- Owen, H.G., 2002. The base of the Albian stage; comments on recent proposals. *Cretaceous Research* 23, 1-13.
- Pervinquière, L., 1907. Étude de paléontologie tunisienne. 1 : Céphalopodes des terrains secondaires. *Mémoires de la carte géologique de Tunisie*, 438 p.
- Peybernès, B., 1982. Les orbitolinidés crétacés d'Afrique : Essai de synthèse. *Cahiers de Micropaléontologie* 2, 13-28.
- Premoli-Silva, I., Sliter, W.V., 1995. Cretaceous planktonic foraminiferal biostratigraphy and evolutionary trends from the Bottacione section, Gubbio, Italy. *Paleotographia Italica* 82, 1-89.
- Reháková, D., Michalik, J., 1997. Evolution and distribution of calpionellids - the most characteristic constituents of Lower Cretaceous Tethyan microplankton. *Cretaceous Research* 18, 493-504.
- Robaszynski, F., Caron, M., Amédro, F., Dupuis, C., Hardenbol, J., González-Donoso, J.-M., Linares, D., Gartner, S., 1993a. Le Cénomaniens de la région de Kalaat Senan (Tunisie Centrale): Litho-biostratigraphie et interprétation séquentielle. *Revue de Paléobiologie* 12, 351-505.
- Robaszynski, F., Hardenbol, J., Caron, M., Amédro, F., Dupuis, C., González D., J.-M., Linares, D., Gartner, S., 1993b. Sequence stratigraphy in a distal environment : the Cenomanian of the Kalaat Senan region (central Tunisia). *Bulletin des Centres de Recherche, d'Exploration-Production, Elf-Aquitaine* 17, 395-433.
- Robaszynski, F., Amédro, F., González Donoso, J.-M., Linares, D., 2008. The Albian (Vraconnian)-Cenomanian boundary at the western Tethyan margin (central Tunisia and southeastern France). *Bulletin de la Société géologique de France* 179, 245-266.
- Sainfeld, P., 1952. Le gîtes plombo-zincifères de Tunisie. *Annales des Mines et de la Géologie* 9, 2 vol., 285 pp., 7 pl., 60 cartes, Tunis.
- Souquet, P., Peybernès, B., Saadi, J., Ben Youssef, M., Ghanmi, M., Zarbout, M., Chikhaoui, M., Kamoun, F., 1997. Séquences et cycles d'ordre 2 en régime extensif et transtensif: exemple du Crétacé inférieur de l'Atlas tunisien. *Bulletin de la Société géologique de France* 168, 373-386.
- Tlatli, M., 1980. Etude des calcaires de l'Albo-Aptien des Djebels Serdj et Bellouta (Tunisie centrale). Thesis Aix-Marseille 2 University, 205 pp., 2 vol., unpublished.
- Velic, I., 2007. Stratigraphy and palaeobiogeography of Mesozoic benthic foraminifera of the Karst Dinarides (SE Europe). *Geologia Croatica* 60, 1-113.
- Vila, J.-M., Ben Youssef, M., Charrière, A., Chikhaoui, M., Ghanmi, M., Kamoun, F., Peybernès, B., Saadi, J., Souquet, P., Zarbout, M., 1994. Découverte en Tunisie, au SW du Kef, de matériel triasique interstrati-fié dans l'Albien : extension du domaine à " glaciers de sel " sous-marins des confins algéro-tunisiens. *Comptes Rendus à l'Académie des Sciences, Paris* 318, II, 1661-1667.
- Vila, J.-M., Ben Youssef, M., Chikhaoui, M., Ghanmi, M., 1995. Découverte d'Albien inférieur (marnes et calcaires à mélobésiées) et moyen (marno-calcaires à débris de Trias) au NW du Djebel Slata: vers l'abandon du modèle en champignon anté-vraconnien. III° Congrès national des Sciences de la terre, Tunis 1995, Extended Abstract, 8 pp.

- Vila, J.-M., Ghanmi, M., Ben Youssef, M., 2001. Découverte d'Albien inférieur à floridées et d'Albien inférieur et moyen marneux, dans le dôme de sel-pli de l'ensemble Djebel el Ajered, Henchir Adjerat Saouda, Djebel el Hamra (ouest de la Tunisie) : comparaisons, conséquences, essai de rétrotectonique salifère. *Bulletin de la Société d'Histoire Naturelle de Toulouse* 137, 57-67.
- Zghal, I., 1994. Etude microbiostratigraphique du Crétacé inférieur de la Tunisie du Centre Ouest. Thesis Tunis II University, 304 pp.
- Zghal, I., Ben Hadjali, N., Razgallah, S., Bismuth, H., 1997. Foraminifères et Ostracodes de l'Aptien-Albien du Jebel Hameima (region de Tadjerouine, Tunisie) : Biostratigraphie, paleoécologie. *Africa Geoscience Review* 4, 361-372.
- Zghal, I., Arnaud-Vanneau, A., 2005. The Hameima Formation. Aptian-Turonian events in Central Tunisia, Field trip guidebook, *Géologie Alpine, série Spéciale* 5, 101-104.
- Zghal, I., Arnaud, H., 2005. The Lower Cretaceous of Central Tunisia. Aptian-Turonian events in Central Tunisia, Field trip guidebook, *Géologie Alpine, série Spéciale* 5, 38-59.
- Zouari, H., Turki, M.M., Delteil, J., Stephan, J.F., 1999. Tectonique transtensive de la paléomarge tunisienne au cours de l'Aptien-Campanien. *Bulletin de la Société géologique de France* 170, 295-301.