



HAL
open science

New species of Cerambycidae and Disteniidae (Coleoptera) from the Neotropical Region

Larry G. Bezark, Antonio Santos Silva, Juan Pablo Botero

► **To cite this version:**

Larry G. Bezark, Antonio Santos Silva, Juan Pablo Botero. New species of Cerambycidae and Disteniidae (Coleoptera) from the Neotropical Region. *Faunitaxys*, 2023, 11 (1), pp.1-13. hal-03936812

HAL Id: hal-03936812

<https://hal.science/hal-03936812>

Submitted on 12 Jan 2023

HAL is a multi-disciplinary open access archive for the deposit and dissemination of scientific research documents, whether they are published or not. The documents may come from teaching and research institutions in France or abroad, or from public or private research centers.

L'archive ouverte pluridisciplinaire **HAL**, est destinée au dépôt et à la diffusion de documents scientifiques de niveau recherche, publiés ou non, émanant des établissements d'enseignement et de recherche français ou étrangers, des laboratoires publics ou privés.



Distributed under a Creative Commons Attribution - NonCommercial - NoDerivatives 4.0
International License

Faunitaxys

*Revue de Faunistique, Taxonomie et Systématique
morphologique et moléculaire*



Volume 11
Numéro 1

Janvier 2023

ISSN : 2269 - 6016
Dépôt légal : Janvier 2023

Faunitaxys

*Revue de Faunistique, Taxonomie et Systématique
morphologique et moléculaire*

ZooBank : <http://zoobank.org/79A36B2E-F645-4F9A-AE2B-ED32CE6771CC>

Directeur de la publication, rédacteur, conception graphique et PAO:

Lionel Delaunay

Cette revue ne peut pas être vendue

Elle est distribuée par échange aux institutions (version papier)

et sur simple demande aux particuliers (format PDF)

à l'adresse suivante:

AFCFF (Association française de Cartographie de la Faune et de la Flore)

28, rue Voltaire, F- 42100 Saint Etienne

E-mail: faunitaxys.journal@gmail.com

Elle est disponible librement au téléchargement à partir du site:

<http://faunitaxys.fr/>

La parution de *Faunitaxys* est apériodique

Faunitaxys est indexé dans / *Faunitaxys* is indexed in:

- **Zoological Record**

Articles and nomenclatural novelties are referenced by:

- **ZooBank** (<http://zoobank.org>)

Online Archives:

- **HAL** (<https://hal.archives-ouvertes.fr>)

- **Internet Archive** (<https://archive.org>)

Imprimée sur les presses de SPEED COPIE, 6, rue Tréfilerie, F- 42100 Saint-Etienne

Imprimé le 11 janvier 2023

New species of Cerambycidae and Disteniidae (Coleoptera) from the Neotropical Region

LARRY G. BEZARK (1, *), ANTONIO SANTOS-SILVA (2) & JUAN PABLO BOTERO (3)

(1) 521 46th Street, Sacramento, California, 95819, USA.

- E-mail: bezbycids@gmail.com - Orcid: <https://orcid.org/0000-0003-0165-552X>

- ZooBank: <http://zoobank.org/25C35904-2035-4416-9534-8641C1551196>

(2) Museu de Zoologia, Universidade de São Paulo, São Paulo, SP, Brazil.

- E-mail: toncriss@uol.com.br - Orcid: <https://orcid.org/0000-0001-7128-1418>

- ZooBank: <http://zoobank.org/147209A1-FA0E-4AE3-8F10-A5CADAB6EE98>

(3) Grupo de Sistemática Molecular, Laboratorio de Entomología, Pontificia Universidad Javeriana. Bogotá, Colombia.

- E-mail: jp_bot@yahoo.com - Orcid: <http://orcid.org/0000-0002-5547-7987>

- ZooBank: <http://zoobank.org/463CA17F-AC2C-44DF-85AB-2AEA79684A12>

* Corresponding author

Keywords:

Cerambycidae; Longhorned beetles;
Sternidius; taxonomy;
Cymatonycha; new species;
Adesmus; Neotropical region.
Cymatonycha;

Abstract. – Four new species are described from the Neotropical region: *Sternidius micromaculatus* sp. nov. (Lamiinae, Acanthocinini), from Belize; *Cymatonycha megagena* sp. nov. (Lamiinae, Desmiphorini), from Mexico (Chiapas); *Adesmus alboverticis* sp. nov. (Lamiinae, Hemilophini); and *Novantinoe pubescens* sp. nov. (Disteniidae), from Guatemala. A key to species of *Cymatonycha* Bates, 1874 is provided, and *Novantinoe pubescens* sp. nov. is included in a previous key.

Bezark L. G., Santos-Silva A. & Botero J. P., 2023. – New species of Cerambycidae and Disteniidae (Coleoptera) from the Neotropical Region. *Faunitaxys*, 11(1): 1 – 13.

DOI: [https://doi.org/10.57800/faunitaxys-11\(1\)](https://doi.org/10.57800/faunitaxys-11(1))

ZooBank: <http://zoobank.org/84FD8433-01D3-4D75-88FA-B1249E89F577>

Received: 19/12/2022 – Revised: 02/01/2023 – Accepted: 03/01/2023

Introduction

Although many new species of Cerambycidae have been described in recent decades, it is still very common to find undescribed species. The number of specimens received by the authors for identification, received from various institutions and private collectors, far exceeds the ability to process them quickly. This is due to the large number of species present in the Americas, particularly in the Neotropical region. During the identification process, we often find new species, new records and, not infrequently, synonyms and/or nomenclatural problems. Herein we describe three new species of Lamiinae (Cerambycidae) and one species of Disteniidae, all from the Neotropical region.

- *Sternidius* LeConte, 1873 is a moderately large genus of Acanthocinini (Cerambycidae, Lamiinae), including 22 species distributed from Canada to Mexico, with a single species described from Venezuela, *Sternidius subfasciatus* (White, 1855) (Monné 2022a; Bezark 2022b; Tavakilian & Chevillotte 2022), which is unknown to us.

- *Cymatonycha* Bates, 1874 is a genus of Desmiphorini (Cerambycidae, Lamiinae) with three species distributed from Mexico to northern South America (Monné 2022a; Bezark 2022b; Tavakilian & Chevillotte 2022).

- *Adesmus* Lepeletier & Audinet-Serville, 1828 is a large genus of Hemilophini (Cerambycidae, Lamiinae), including 67 species

distributed from Mexico to southern South America, including the Caribbean (Monné 2022a; Bezark 2022b; Tavakilian & Chevillotte 2022).

- *Novantinoe* Santos-Silva & Hovore, 2007 is a large genus of Disteniidae, with 41 species occurring from Mexico to northern South America (Monné, 2022b; Bezark 2022b; Tavakilian & Chevillotte 2022).

Material and Methods

Most of the photographs of these species were taken by the second author with a Canon EOS Rebel T3i DSLR camera, Canon MP-E 65mm f/2.8 1-5X macro lens, controlled by Zerene Stacker AutoMontage software; measurements were taken in “mm” using measuring ocular Hensoldt/Wetzlar - Mess 10 in the Leica MZ6 stereomicroscope, also used in the study of the specimens.

All specimens used to describe the new species originally belonged to the private collection of the first author.

The collection acronyms used in the text are as follows:

– CSCA: California State Collection of Arthropods, Sacramento, California, USA.

– LGBC: Larry G. Bezark collection, Sacramento, California, USA.

– MZSP: Museu de Zoologia, Universidade de São Paulo, São Paulo, Brazil.

Reviewer :

Dan Heffern (Houston, Texas, USA) - ZooBank: <http://zoobank.org/E3B400A7-9B0B-44AF-B0DE-DEF90A638A27> - Orcid: <https://orcid.org/0000-0003-2263-6643>



This is an open access article under the terms of the Creative Commons Attribution-NonCommercial-NoDerivs License, which permits use and distribution in any medium, provided the original work is properly cited, the use is non-commercial and no modifications or adaptations are made.

Copyright 2022 The Authors. *Faunitaxys* published by Lionel Delaunay on behalf of the AFCFF (Association française de Cartographie de la Faune et de la Flore).

Results

CERAMBYCIDAE Latreille, 1802

LAMIINAE Latreille, 1825

ACANTHOCININI Blanchard, 1845

Sternidius LeConte, 1873

Sternidius micromaculatus sp. nov.

(Fig. 1-5)

ZooBank: <http://zoobank.org/F1090A7F-B1E3-44E2-A25E-7CC02EA9A22A>

Holotype, ♀, BELIZE, *Belize*: La Democracia – TEC (Tropical Educ. Center), N17.35777 W88.54227, 26 m, M/V blacklight, 6-9.VI.2016, L.G. Bezark leg. (CASC, formerly LGBC).

Paratypes, ♀, BELIZE, *Cayo*: 5 mi. N San Ignacio, 22-30.XI.1988, F.D. Parker leg. (LGBC).

Description of the holotype (Fig. 1-4)

Coloration. – Integument mostly dark brown; ventral mouthparts mostly reddish brown except yellowish-brown palpomeres; anteclypeus fulvous anteriorly; labrum yellowish anteriorly; antennomere III brown with irregular light brown areas interspersed, except dark brown apex; antennomere IV light brown on basal fifth, brown on remaining surface, except dark brown apex; antennomeres V-VII brown basally, light brown on remaining basal third, brown on apical half, except dark brown apex; antennomeres VIII-X light brown except dark brown apex; antennomere XI light brown. Central area of prosternum, prosternal process, and mesoventral process dark reddish brown. Tarsomeres III–V mostly dark reddish brown.

Head. – Frons densely, finely, shallowly punctate; with abundant pubescence partially obscuring integument, pubescence yellowish-white close to eyes, appearing whiter depending on light intensity, yellowish-white with yellowish-brown pubescence interspersed on inferior half, light yellowish brown with white pubescence interspersed on superior half; with one long, erect dark brown seta close to each eye. Area between antennal tubercles with dense yellowish-brown pubescence, except glabrous median groove. Area between antennal tubercles and upper eye lobes with dense pale yellow pubescence with whitish pubescence interspersed except glabrous median groove. Area between upper eye lobes with dense brownish pubescence laterally and pale yellow pubescence close to glabrous median groove. Remaining surface of vertex with sparse pale yellow pubescence toward eye lobes, pubescence almost absent on triangular central region, glabrous close to prothorax. Area behind upper eye lobes with dense brownish pubescence close to eye, pubescence brownish close to vertex and centrally, yellowish-white between brownish areas, pale yellow toward lower eye lobes, glabrous close to prothorax. Area behind lower eye lobes with dense pale yellow pubescence close to eye, this area distinctly narrowed centrally and abruptly widened inferiorly, glabrous close to prothorax. Genae finely rugose-punctate except smooth apex; with abundant pale yellow pubescence not obscuring integument, appearing whiter depending on light intensity, except glabrous smooth area, and a few long, erect dark setae interspersed. Antennal tubercles with abundant brown pubescence with yellowish-brown pubescence interspersed, except whitish pubescence inferiorly on frontal region. Wide central area of postclypeus with moderately abundant yellowish-white pubescence not obscuring integument, long, erect dark brown setae interspersed, some setae yellowish-brown apically, and long, erect fulvous setae on each side. Sides of postclypeus glabrous. Labrum with yellowish-white pubescence not obscuring integument close to anteclypeus, pubescence appearing white depending on light intensity, with transverse row of long, erect, thick blackish setae on posterior third; long, erect yellowish-brown setae on sides of anterior 2/3 and centrally close to pubescent posterior region, glabrous on remaining surface, except anterior margin with short fringe of yellowish-brown setae. Distance between upper eye lobes 0.23 times distance between outer margins of eyes; in frontal view, distance between lower eye lobes 0.49 times distance between outer margins of eyes. Antennae 2.1 times

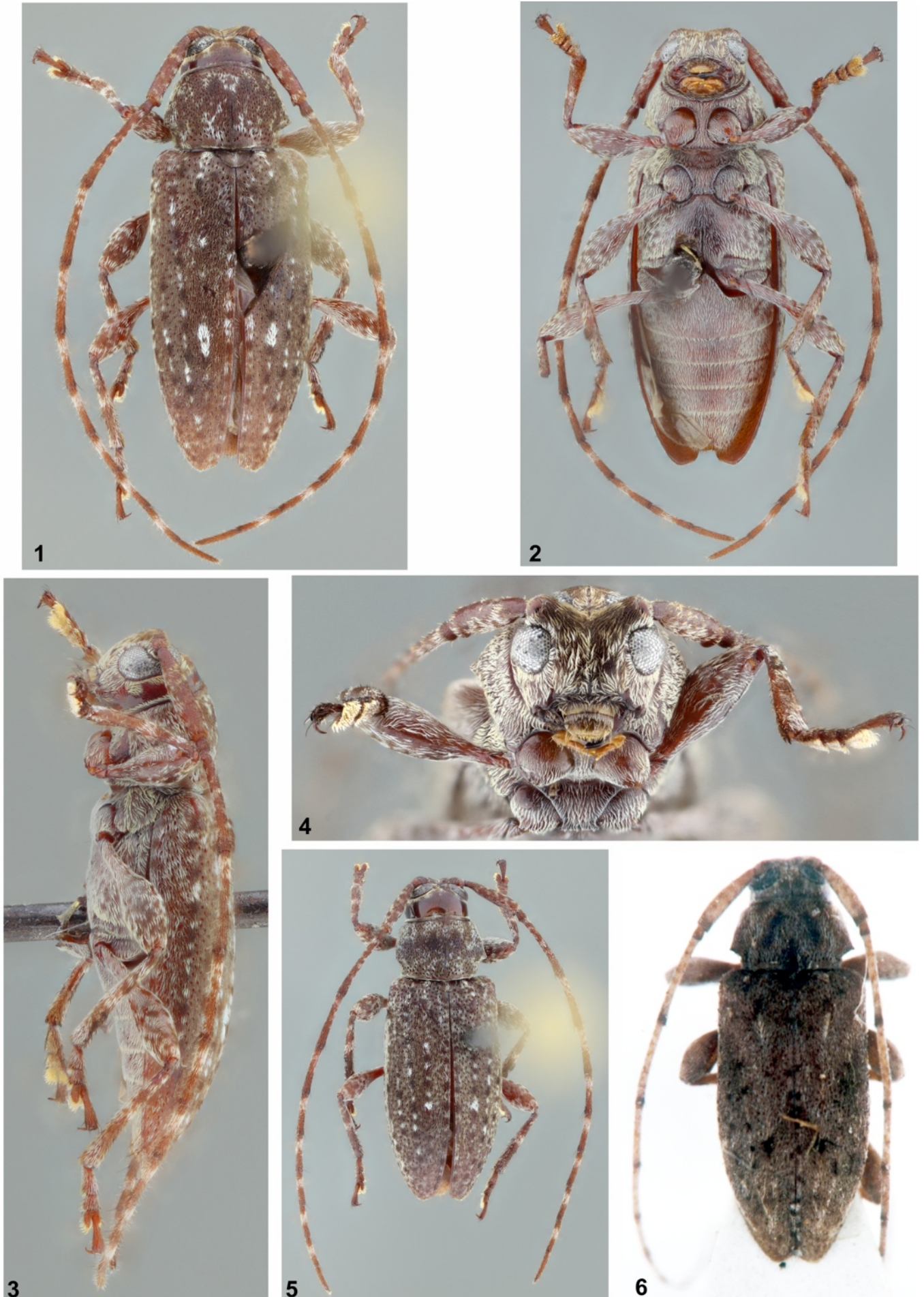
elytral length, reaching elytral apex at middle of antennomere VII. Scape sinuous on inner region, with apex slightly projected inward; with abundant whitish pubescence not obscuring integument ventrally, pubescence distinctly sparse apically, and with irregular, transverse, both whitish and yellowish-brown pubescent bands dorsally and laterally. Pedicel with sparse brownish pubescence posteriorly, almost glabrous anteriorly. Antennomere III with abundant brownish pubescence not obscuring integument, abundant, irregular yellowish-white pubescent maculae interspersed, and short, erect, sparse yellowish-white setae interspersed; apex with a few long dark setae directed backward. Antennomeres IV-X with dense whitish pubescence basally, this area shorter from VI, except base with brownish pubescence not obscuring integument, this area larger from IX, and light yellowish-white pubescence not obscuring integument on remaining surface; with short, erect, somewhat abundant yellowish-white setae interspersed throughout; ventral apex with a few long, erect dark setae. Antennomere XI with light yellowish-brown pubescence not obscuring integument, and short, erect yellowish-white setae interspersed.

Antennal formula based on length of antennomere III:

– Scape = 0.97. – Pedicel = 0.17. – IV = 0.87. – V = 0.73. – VI = 0.67. – VII = 0.63. – VIII = 0.57. – IX = 0.53. – X = 0.53. – XI = 0.50.

Thorax. – Prothorax wider than long; with narrow anterior constriction; sides gradually, distinctly divergent from anterior constriction to lateral tubercles, then abruptly narrowed, subparallel-sided toward posterolateral angles; lateral tubercles large, as a continuation of sides, with their apex located on posterior third. Pronotum abundantly, coarsely punctate, punctures absent close to anterior and posterior margins, sparser centrally, slightly coarser after lateral tubercles of prothorax; with large, oblique, slightly elevated gibbosity on each side, from anterior quarter to after middle, and slightly distinct carina-shaped gibbosity centrally, from about middle to posterior quarter; with abundant yellowish-brown pubescence not obscuring integument, and irregular, white pubescent maculae interspersed, except anterolateral region with dense yellowish pubescence; with a few long, erect dark setae close to posterior region of lateral tubercles of prothorax. Sides of prothorax with abundant yellowish pubescence not obscuring integument, except glabrous narrow area close to anterior margin. Prosternum with dense yellowish pubescence laterally, sparser, yellowish-white centrally, except glabrous anterior sulcus. Prosternal process with abundant yellowish-white pubescence not obscuring integument; narrowest area 0.3 times procoxal width. Ventral surface of mesothorax with dense yellowish pubescence laterally; sides of superior region of mesoventrite with abundant whitish pubescence not obscuring integument; remaining surface of mesoventrite with sparse whitish pubescence, except arched glabrous central band, and yellowish-brown pubescence close to mesoventral process. Mesoventral process gradually narrowed toward posterior fifth, then distinctly widened; narrowest area 0.63 times mesocoxal width; apical width 0.84 times mesocoxal width; with abundant whitish pubescence not obscuring integument. Sides of ventral surface of metathorax with dense yellowish-white pubescence with subcircular areas with sparse pubescence interspersed; central area of metaventrite with abundant whitish pubescence not obscuring integument, except glabrous metathoracic discripen. Scutellum with yellowish-brown pubescence not obscuring integument laterally and dense, longitudinal white pubescence band centrally.

Elytra. – Somewhat abundantly, coarsely punctate on anterior third, punctures gradually finer and sparser toward apex; area of centrobasal crest slightly tumid; dorsal surface with three slightly distinct longitudinal carinae, innermost starting on apex of tumid area of centrobasal crest, central one starting on base, both gradually disappearing from posterior third, outermost is the least distinct, starting about middle, gradually disappearing from posterior third, all carinae with short, irregular areas slightly tumid; humeral carina vaguely indicated; apex obliquely truncate, with rounded outer angle; with abundant pale yellowish-brown pubescence not obscuring integument, except row of white pubescence spots along dorsal carinae, innermost carina with larger white pubescent spot after middle, row of dark brown pubescent spots also along dorsal and humeral carinae, oblique white pubescent band from base to tumid area of centrobasal crest, sparse white pubescence close to suture on anterior third, and white pubescent spots close to suture on posterior 2/3, and sides with whitish pubescence not obscuring integument, pubescence denser on anterior half, and irregular light yellowish-brown areas interspersed.



Figures 1-6. *Sternidius* spp.

1-4. *Sternidius micromaculatus* sp. nov., holotype ♀. 1. Dorsal habitus. 2. Ventral habitus. 3. Lateral habitus. 4. Head, frontal view.

5. *Sternidius micromaculatus* sp. nov., paratype ♀, dorsal habitus.

6. *Sternidius naeviicornis* (Bates, 1885), lectotype ♂, dorsal habitus, photograph by Jesus Santiago Moure.

Legs. – Femora with abundant whitish pubescence not obscuring integument and irregular areas with sparse yellowish pubescence on femoral clubs. Tibiae with three irregular white pubescent rings, one near base, one about middle, another apically not reaching ventral surface, somewhat abundant yellowish-brown pubescence between them, except dorsal surface of mesotibiae with row of short, erect, thick black setae from sulcus to apex; ventral third of protibiae and apical quarter of meso- and metatibiae with dense, bristly yellowish-brown pubescence; posterior half of dorsal surface of metatibiae with sparse, short, erect, thick black setae interspersed. Tarsomere I mostly with white pubescence dorsally; II with yellowish-brown pubescence and white pubescence interspersed; III-V with yellowish-brown pubescence not obscuring integument; metatarsomere I about as long as II-III together.

Abdomen. – Ventrites with abundant whitish pubescence not obscuring integument; ventrite 5 with a few long, erect dark setae posteriorly; apex of ventrite 5 slightly concave centrally.

Variation. – Area between antennal tubercles with dense yellowish-white pubescence; white pubescent maculae on pronotum more abundant and larger; anterolateral region of pronotum with dense white pubescence; circum-scutellar region with somewhat abundant white pubescence and posterior third of elytra with abundant whitish pubescence interspersed.

Dimensions (mm) (holotype ♀ / paratype ♀).

- Total length, 6.10/6.60;
- Prothoracic length, 1.25/1.30;
- Anterior prothoracic width, 1.25/1.30;
- Posterior prothoracic width, 1.45/1.55;
- Maximum prothoracic width, 1.80/1.95;
- Humeral width, 2.15/2.35;
- Elytral length, 4.40/4.75.

Etymology. – The specific epithet “micromaculatus” (Latin, micro = small; maculatus = spotted) refers to the multiple small light colored pubescent spots on the elytra.

Remarks.

Sternidius micromaculatus **sp. nov.** is similar to *S. punctatus* (Haldeman, 1847) (see photographs on Bezark 2022a), but differs by:

- the distance between upper eye lobes equal to apical diameter of the scape (distinctly wider than apical diameter of the scape in females of *S. punctatus*);
- lateral tubercles of the prothorax larger (smaller in *S. punctatus*);
- the elytral apex subrounded (truncate, concave centrally with outer and sutural angles slightly projected in *S. punctatus*);
- sometimes not different slightly oblique, not differing to that in the new species);
- elytra without transverse white band on posterior half (with irregular, fragmented white pubescent band in *S. punctatus*, sometimes reduced to a series of maculae).

The new species also resembles *S. naeviicornis* (Bates, 1885) (Fig. 6) but differs from:

- it by the pronotum without one oblique blackish area on each side of anterior half (present in *S. naeviicornis*);
- elytra without oblique dark pubescent band (inverted V-shaped) on posterior half, with grayish-white pubescence bordering its anterior region (present in *S. naeviicornis*).

Sternidius micromaculatus **sp. nov.** is also similar to *S. chemsaki* Lewis, 1977 (see photographs on Bezark 2022a and in the original description), but differs by:

- the body stouter (slender in *S. chemsaki*);
- lateral tubercles of the prothorax larger and not acute apically (smaller, acute apically in *S. chemsaki*);
- elytra without black pubescent maculae distinctly contrasting with remaining pubescence (present in *S. chemsaki*).

DESMIPHORINI Thomson, 1860

Cymatonycha Bates, 1874

Cymatonycha megagena **sp. nov.**

(Fig. 7-10)

ZooBank: <http://zoobank.org/74DC6291-CCE5-4E56-BE24-58BD0BC14A90>

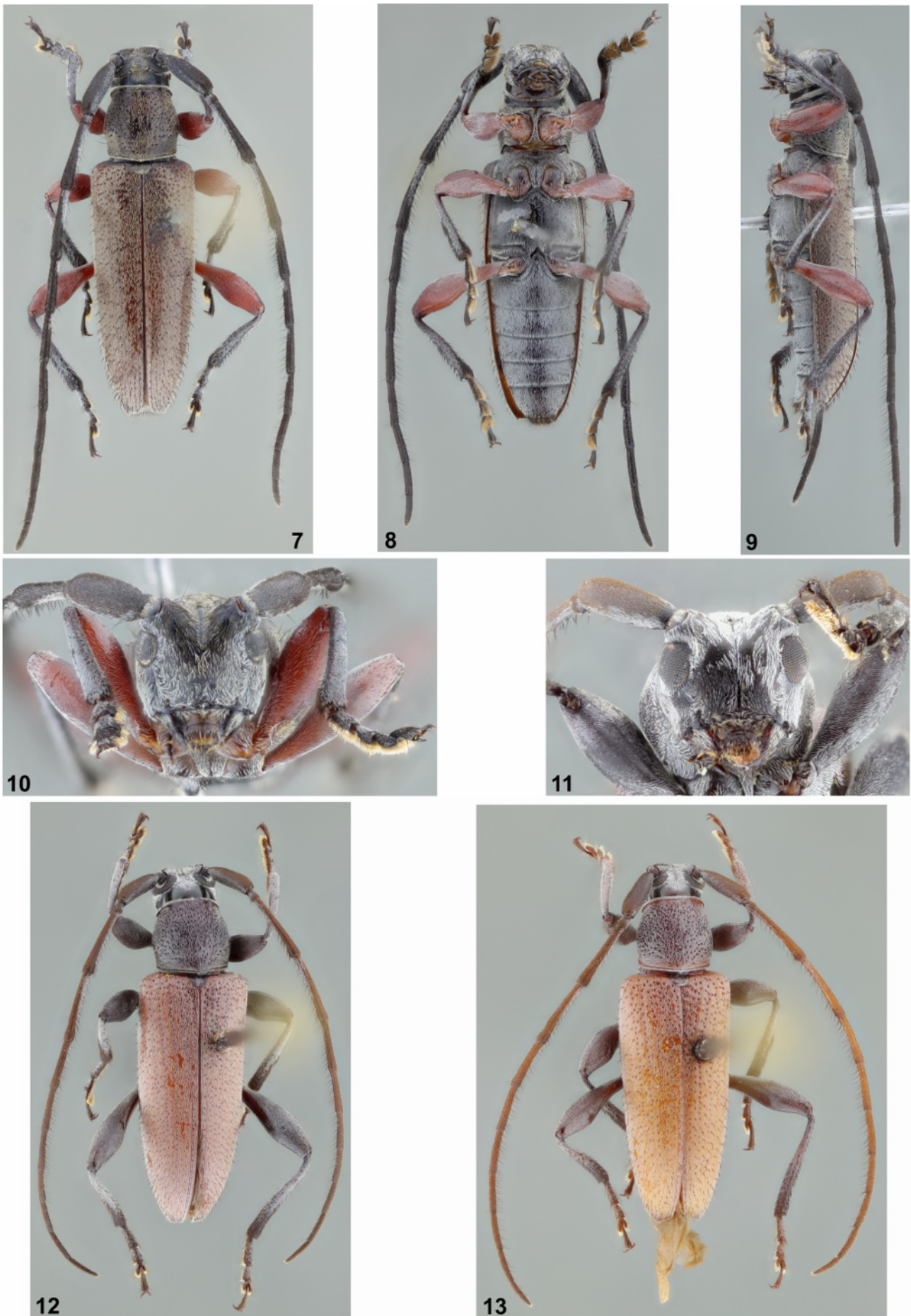
Holotype, ♂, MEXICO, *Chiapas*: Rte 83, 9.1-10.0 km N Ocozocoautla, beating bum, 19.VI.2016, J. Rifkind & E. Martinez leg. (CASC, formerly LGBC).

Paratype, ♂, MEXICO, *Chiapas*: 3.7 km NE Cacahuano, 988 m, 17°01.238'N 93°07.990'W, oak/thorn forest, 25.VI.2016, J. Rifkind & E. Martinez leg. (LGBC).

Description of the holotype

Coloration. – Integument mostly dark brown, almost black; ventral mouthparts dark reddish brown, except black palpomeres with yellowish apex; anteclypeus brown with irregular yellowish-brown areas; labrum brown posteriorly, yellowish-brown anteriorly, except black area on each side close to anterior margin. Elytra dark brown basally, mostly brown on remaining surface, slightly, gradually lighter toward apex. Procoxae brownish; meso- and metacoxae blackish, except dark reddish brown area close to trochanter. Trochanters dark brown on margins, this area lighter on protrochanters, orange brown on remaining surface, this area larger on protrochanters. Femora reddish brown, except dark apex.

Head. – Frons abundantly, minutely punctate; with abundant whitish pubescence not obscuring integument, except yellowish-white pubescence centrally, and oblique brownish pubescent band on each side of superior region, following toward frontal area of antennal tubercles; with a few long, erect dark setae on each side near eyes. Area between antennal tubercles with abundant, both yellowish and whitish pubescence not obscuring integument, except glabrous central area. Area between posterior region of antennal tubercles and posterior margin of upper eye lobes with moderately dense yellowish-brown pubescence laterally, glabrous centrally. Remaining surface of vertex finely, abundantly punctate; with abundant yellowish-brown pubescence centrally, not reaching prothoracic margin, shorter than pubescence close to eyes, with very sparse, minute brownish pubescence on remaining surface; with a few long, erect dark setae near eyes. Area behind upper eye lobes moderately abundantly, finely punctate; with dense yellowish-brown pubescence close to eye, mostly glabrous on remaining surface. Area behind lower eye lobes tumid, densely, minutely punctate close to eye, this area widened toward ventral surface, smooth close to prothorax; with abundant yellowish-white pubescence partially obscuring integument on tumid area, glabrous close to prothorax. Genae microsculptured, except smooth apex; 1.5 times longer than lower eye lobe; with abundant whitish pubescence not obscuring integument, except glabrous apex. Wide central area of postclypeus with moderately abundant white pubescence, longer close to anteclypeus, and long, erect dark setae interspersed. Sides of postclypeus glabrous. Labrum with whitish pubescence not obscuring integument on posterior half, with transverse row of long, erect blackish setae near middle, dark setae forming one tuft on each side of this region, and sparse, long, erect yellowish-brown setae on anterior half, except fringe of yellowish-brown setae on sides of anterior margin. Gulamentum with sparse, shallow, moderately sparse punctures; glabrous except intermaxillary process with whitish pubescence not obscuring integument. Antennal tubercles with brownish pubescence dorsally and frontal area close to dorsal surface, except whitish pubescence on remaining frontal surface, and both whitish and yellowish pubescence posteriorly. Distance between upper eye lobes 0.22 times distance between outer margins of eyes; in frontal view, distance between lower eye lobes 0.64 times distance between outer margins of eyes. Antennae 1.9 times elytral length, reaching elytral apex at base of antennomere VIII. Scape distinctly widened from basal fifth, subparallel-sided, wider than distance between upper eye lobes on remaining surface; with brownish pubescence not obscuring integument dorsally and superior region of sides, this area wider on outer surface, and abundant white pubescence not obscuring integument on remaining surface. Pedicel with brownish pubescence not obscuring integument dorsally, white on remaining surface. Antennomeres III-IV slightly, gradually widened from base to apex; with brownish pubescence not obscuring integument, except white pubescence on inferior region of basal half of inner surface, and anterior 2/3 of



Figures 7-13. *Cymatonycha* spp.

7-10. *Cymatonycha megagena* **sp. nov.**, holotype ♂. **7.** Dorsal habitus. **8.** Ventral habitus. **9.** Lateral habitus. **10.** Head, frontal view. **11-13.** *Cymatonycha castanea* Bates, 1874, ♂, Mexico (Sinaloa). **11.** Head, frontal view, specimen 1. **12.** Dorsal habitus, specimen 1. **13.** Dorsal habitus, specimen 2.

ventral surface; with long, erect moderately abundant blackish setae ventrally. Antennomeres V-VIII with brownish pubescence not obscuring integument, except white pubescent macula on base of inner surface; with moderately sparse, long, erect blackish setae ventrally. Antennomeres IX-XI with brownish pubescence, and minute, erect yellowish setae interspersed; IX with sparse, moderately long blackish setae ventrally. Antennomeres IV-X with one long, erect black seta near dorsal apex.

Antennal formula based on length of antennomere III:

– Scape = 0.84. – Pedicel = 0.13. – IV = 1.05. – V = 0.78. – VI = 0.73. – VII = 0.73. – VIII = 0.67. – IX = 0.57. – X = 0.46. – XI = 0.48.

Thorax. – Prothorax as long as wide; anterior constriction well marked; sides rounded from anterior constriction to posterolateral angles. Pronotum moderately sparsely, coarsely punctate, except smooth area close to anterior margin and sparsely, finely punctate sides of posterior quarter; with abundant yellowish-brown pubescence not obscuring integument, pubescence almost absent close to anterior margin, and more yellowish-white close to posterior margin; with a few long, erect dark setae interspersed. Sides of prothorax moderately sparsely, coarsely punctate, except subsmooth area close to anterior margin, and finely punctate area close to posterior margin; with abundant light yellowish-brown pubescence not obscuring integument, pubescence absent close to anterior margin, with sparse, long, erect dark setae interspersed. Prosternum glabrous on anterior half, with abundant yellowish-white pubescence partially obscuring integument on posterior half. Prosternal process with abundant whitish pubescence not obscuring integument; narrowest area 0.14 times procoxal width. Ventral surface of meso- and metathorax with abundant whitish pubescence not obscuring integument, pubescence denser laterally. Mesoventral process gradually narrowed toward apex; apex emarginate centrally; dorsal surface with central longitudinal carina. Scutellum with abundant yellowish pubescence, denser apically.

Elytra. – Sides gradually narrowed toward apex; apex truncate, slightly concave centrally, with outer angle slightly projected; moderately sparsely, coarsely punctate on anterior third, punctures gradually sparser and finer toward apex; with abundant yellowish pubescence not obscuring integument, with whitish pubescence and long, erect, thick blackish setae interspersed.

Legs. – Femora with whitish pubescence not obscuring integument. Tibiae with dense white pubescence, except posterior third of ventral surface of protibiae and posterior quarter of ventral surface of meso- and metatibiae with dense, bristly dark brown pubescence, and dorsal posterior half of mesotibiae with very sparse white pubescence; dorsal surface of posterior half of mesotibiae with abundant, short, thick, erect blackish setae; ventral surface of posterior half of meso- and metatibiae with sparse, long, erect dark setae interspersed; dorsal surface of metatibiae with sparse, short, erect, thick setae on anterior third, and denser, slightly longer, thick, erect dark setae on remaining surface. Dorsal surface of tarsomeres I-II with abundant white pubescence, and long, erect dark setae interspersed, especially laterally, erect setae directed sideward and upward laterally; tarsomeres III-V with sparser dark pubescence; tarsomere III and posterior quarter of V with dark erect setae as on I and II; metatarsomere I as long as II-III together.

Abdomen. – Ventrites with abundant whitish pubescence partially obscuring integument and a few long, erect dark setae interspersed, erect setae slightly more abundant on apex of ventrite 5.

Dimensions (mm) (holotype ♂ / paratypes ♂).

- Total length, 8.80 / 8.35;
- Prothoracic length, 1.75 / 1.60;
- Anterior prothoracic width, 1.50 / 1.40;
- Posterior prothoracic width, 1.65 / 1.50;
- Maximum prothoracic width, 1.80 / 1.65;
- Humeral width, 2.45 / 2.30;
- Elytral length, 6.25 / 5.60.

Etymology. – The specific epithet “megagena” (Greek, mégas, meaning large) refers to the large genae of this species which separate it from the other known species in the genus.

Remarks. – *Cymatonycha megagena* sp. nov. is similar to *C. castanea* Bates, 1874 (Fig. 11-14), but differs by the lower eye lobes smaller, making the genae 1.5 times longer (Fig. 10), pronotal punctures coarser and sparser, and elytra narrower. In *C. castanea*, the lower eye lobes are about as long as genae (Fig. 11, 14), pronotal punctures finer and more abundant, and the elytra are wider. It differs from *C. meridionalis* Martins & Galileo, 1995 (Fig. 15-18) by the lower eye lobes distinctly shorter than genae longer (Fig. 15, 17) than genae in *C. meridionalis*.

HEMILOPHINI Thomson, 1868

Adesmus Lepelletier & Audinet-Serville, 1825

Adesmus alboverticis sp. nov.

(Fig. 19-23)

ZooBank: <http://zoobank.org/65DE2C1E-2F97-4F44-8C92-A7A15FBA67DF>

Holotype, ♀, GUATEMALA, *Suchitepequez*: Finca Los Tarrales, N of Patulul, 750 m, 14.52325°N 91.13665°W, 23-24.VI.2017, J. Monzon leg. (CASC, formerly LGBC).

Description of the holotype

Coloration. – Frons brown; vertex and area behind eyes dark brown; ventral surface of head reddish brown; ventral mouthparts reddish brown, except pale yellow palpomeres; postclypeus brown except blackish apex of sides; anteclypeus pale yellowish brown; area of labrum close to anteclypeus yellowish-brown with irregular brown areas interspersed, remaining surface reddish brown except blackish apex; mandibles reddish brown on basal 2/3, black on apical third; antennae orangish brown, slightly darker apically. Pronotum, superior side of prothorax, and elytra brown; inferior area of side of prothorax dark brown; ventral surface of thorax reddish brown on wide central area, except brownish or dark brown area close to coxal cavities and sides of prosternal process and mesoventral process, dark brown laterally. Coxae mostly orangish; trochanters, femora, tibiae, and tarsi pale yellow. Ventrites orangish brown, gradually lighter toward ventrite 5.

Key to species of *Cymatonycha*

1. Elytral margins with dense, narrow yellowish-white or whitish pubescent band in both sexes; mesoventral process without tubercle. *Mexico (Jalisco, Michoacán, Guerrero, Morelos)* *C. fasciata* Chemsak & Noguera, 1993
- Elytral margins without yellowish-white or whitish pubescent band; mesoventral process tuberculate 2
- 2(1). Genae 1.5 times longer than lower eye lobe (Fig. 10). *Mexico (Chiapas)* *C. megagena* sp. nov.
- Genae at most as long as lower eye lobe 3
- 3(2). Genae as long as lower eye lobe (Fig. 11, 14). *Mexico (Sinaloa, Jalisco, Chiapas, Morelos, Quintana Roo, Yucatán, Oaxaca, Mexico), Guatemala, Honduras, Nicaragua, Costa Rica, Panama* *C. castanea* Bates, 1874
- Genae shorter than lower eye lobe (Fig. 15, 17). *Costa Rica, Colombia, Venezuela* *C. meridionalis* Martins & Galileo, 1995



Figures 14-18. *Cymatonycha* spp.

14. *Cymatonycha castanea* Bates, 1874, ♂, Mexico (Sinaloa), head, frontal view, specimen 2.

15-16. *Cymatonycha meridionalis* Martins & Galileo, 1995, ♂, Venezuela (Maracay). **15.** Head, frontal view. **16.** Dorsal habitus.

17-18. *Cymatonycha meridionalis*, ♀, Costa Rica (Guanacaste). **17.** Head, frontal view. **18.** Dorsal habitus.

Head. – Frons coarsely, sparsely punctate; with dense white pubescence close to eyes and central superior area; with abundant white pubescence not obscuring integument close to clypeus, slightly denser on each side of median groove, fused with the dense white lateral and central pubescence; remaining surface with abundant yellowish-white pubescence not obscuring integument; with a few long, erect yellowish-brown setae laterally. Area between eyes and base of antennae with dense white pubescence. Area between antennal tubercles and central area between eyes with abundant yellowish-brown pubescence not obscuring integument, except glabrous median groove; remaining surface of vertex with dense white pubescence, except very narrow yellowish-brown pubescent band along median groove; with a few long, erect yellowish-brown setae close to eyes. Area behind upper eye lobes with dense white pubescence; area between upper and lower eye lobes with longitudinal brownish pubescent band not reaching eye. Area behind lower eye lobes with dense white pubescence. Genae with abundant white pubescence close to eye, gradually sparser toward glabrous apex. Gulamentum smooth, glabrous, except base of intermaxillary process with minute yellowish-white pubescence. Wide central area of postclypeus with abundant white pubescence not obscuring integument; with one long, erect yellowish-brown seta on each side. Sides of postclypeus glabrous. Labrum glabrous close to anteclypeus; wide central area with a few short, whitish setae and long, erect, thick yellowish-brown setae; remaining surface glabrous. Distance between upper eye lobes 0.17 times distance between outer margins of eyes; in frontal view, distance between lower eye lobes 0.63 times distance between outer margins of eyes. Antennae 2.45 times elytral length, reaching elytral apex at base of antennomere VI. Scape, pedicel, and antennomeres III-VIII with abundant yellowish pubescence not obscuring integument; antennomeres IX-XI with yellowish pubescence not obscuring integument and abundant, short, suberect blackish setae interspersed, except apex of XI with long yellowish setae directed backward; scape, pedicel and antennomeres III-X with long, erect setae ventrally, setae yellowish brown on scape, pedicel, and base of III, gradually darkened on posterior region of III, dark on remaining antennomeres, distinctly sparser from VIII.

Antennal formula based on length of antennomere III:

– Scape = 0.65. – Pedicel = 0.09. – IV = 0.85. – V = 0.58. – VI = 0.51. – VII = 0.47. – VIII = 0.43. – IX = 0.41. – X = 0.38. – XI = 0.42.

Thorax. – Prothorax slightly wider than long; subparallel-sided on anterior 2/3, narrowed and subparallel-sided on posterior third. Pronotum convex on anterior 2/3, slightly convex on posterior third; in side view, slightly, gradually inclined from anterior margin to middle, more distinctly inclined from this point to posterior third; finely, abundantly punctate; with dense, large white pubescent macula on each side of central area of posterior 3/4, maculae inclined sideward close to posterior margin; remaining surface with dense yellowish-brown pubescence, not so dense as white pubescence, except antero- and posterocentral regions with yellowish-white pubescence; with a few long, erect yellowish setae interspersed on posterior region of yellowish-brown pubescence. Sides of prothorax with pubescence as on sides of pronotum close to it, pubescence dense, white close to prosternum. Sides of prosternum with dense white pubescence, and remaining surface mostly glabrous, except abundant yellowish-white pubescence close to procoxal cavities. Prosternal process with sparse yellowish pubescence; narrowest area located close to base, 0.13 times procoxal width. Central area of ventral surface of mesothorax with sparse whitish pubescence, slightly denser and longer on mesoventral surface, and remaining surface with dense white pubescence; mesoventral process narrowed centrally, with narrowest area 0.37 times mesocoxal width. Sides of ventral surface of metathorax with dense white pubescence, and central area of metaventre with abundant yellowish-white pubescence not obscuring integument. Scutellum with dense white pubescence.

Elytra. – Moderately sparsely, coarsely punctate, punctures finer and sparser toward apex; with dense yellowish-brown pubescence obscuring integument, yellowish laterally and on apex, except six dense white pubescent maculae on each elytron: one moderately small basally, between humerus and scutellum; one large on dorsal anterior half, starting on anterior ninth near humeral carina, slightly obliquely

inclined toward suture, strongly narrowed on its innermost region and continuing backward close to suture; one large about middle of dorsal surface, slightly oblique, not reaching humeral carina and suture; one moderately large on dorsal posterior quarter, slightly oblique, starting close to humeral carina and reaching suture; one moderately small on lateral base, not reaching humeral carina, almost reaching epipleural margin; another slightly before middle of lateral region, almost reaching humeral carina and epipleural margin. With sparse, long, erect yellowish setae throughout. Apex slightly obliquely truncate, with outer angle rounded and sutural angle slightly projected.

Legs. – Femora with white pubescence not obscuring integument; with a few long, erect yellowish setae interspersed. Tibiae with yellowish pubescence not obscuring integument, pubescence longer, yellower on ventral posterior third, especially on protibiae; with long, erect yellowish setae interspersed, setae denser on posterior quarter of mesotibiae and posterior half of metatibiae, especially dorsally. Dorsal surface of tarsi with whitish pubescence not obscuring integument, and long, erect yellowish setae interspersed.

Abdomen. – Ventrites 1-4 with dense white pubescence laterally, pubescence sparser, not obscuring integument centrally; ventrite five with dense white pubescent macula on sides of anterior half, and abundant whitish pubescence on remaining surface. Ventrites with a few long, erect yellowish setae interspersed, setae more abundant on posterior region of ventrite 5.

Dimensions (mm)

- Total length, 5.25;
- Prothoracic length, 1.15;
- Anterior prothoracic width, 1.15;
- Posterior prothoracic width, 1.05;
- Maximum prothoracic width, 1.20;
- Humeral width, 1.60; elytral length, 3.75.

Etymology. – The specific epithet “alboverticis” (Latin, albo, from albus, meaning white; verticis, genitive of vertex, meaning top) refers to the beautiful white vertex of the head, which separates this species from others that appear similar.

Remarks. – *Adesmus alboverticis* sp. nov. is similar to *A. vulcanicus* Galileo & Martins, 1999 (Fig. 24-27) by the yellowish brown pubescent band on sides of the prothorax narrower (Fig. 21) (wider (Fig. 27) in *A. vulcanicus*), distance between upper eye lobes slightly wider than one upper eye lobe (Fig. 23) (almost twice as wide as one upper lobe (Fig. 26) in *A. vulcanicus*), and by the antennae (Fig. 19-21) distinctly longer (shorter (Fig. 24-25) in *A. vulcanicus*). It is similar to *Adesmus martinsi* Wappes & Santos-Silva, 2017, but differs (females) by upper eye lobes closer to each other, slightly wider than one upper eye lobe (Fig. 23), frons without dense whitish pubescence, and by the presence of a white pubescence macula on lateral of elytra, before middle, almost reaching humeral carina and epipleural margin. In *A. martinsi*, the distance between upper eye lobes is equal to at least twice the width of one upper lobe (Fig. 28-29), the frons is covered by a dense whitish pubescence and the sides of elytra only have a basal macula. *Adesmus alboverticis* sp. nov. differs from *A. pulchellus* Galileo & Martins, 1999 by upper eye lobes closer to each other, slightly wider than one upper eye lobe (Fig. 23) (distinctly wider than twice width of one upper lobe (Fig. 30) in *A. pulchellus*), lower eye lobes larger than genal length (Fig. 22) (about as long (Fig. 31) in *A. pulchellus*). Finally, it differs from *A. icambi* Martins & Galileo, 2009 (only holotype male known) by the distance between upper eye lobes distinctly narrower (wider than twice width of one upper lobe in *A. icambi* – in *Adesmus*, usually the distance is wider in females than in males), and antennae unicolorous (bicolorous in *A. icambi*).



Figures 19-23. *Adesmus alboverticis* sp. nov., holotype ♀.

19. Dorsal habitus. 20. Ventral habitus. 21. Lateral habitus. 22. Head, frontal view. 23. Upper eye lobes.

DISTENIIDAE Thomson, 1861

Novantinoe Santos-Silva & Hovore, 2007

Novantinoe pubescens sp. nov.

(Fig. 32-36)

ZooBank: <http://zoobank.org/E0D40BFB-E03E-46C5-81A1-9D40455AB468>

Holotype, ♀, HONDURAS, *Yoro*: Parque Nacional Pico Pijol, Linda Vista, 1450 m, 15°09'28"N 87°37'33"W, m.v. light, 7.V.2000, Ratcliffe, Smith, Ocampo & Cave leg. (CASC, formerly LGBC).

Description of the holotype

Coloration. – Integument mostly black with bluish and violaceous reflections; ventral mouthparts dark orangish brown, except lighter apex of palpomeres, maxillary and labial palpomeres II brownish, mentum

mostly dark brown, and mostly brown cardo and stipes; antennomere III dark brown basally, orangish-brown on remaining surface; antennomeres IV–X orangish brown with apex slightly darker; antennomere XI orangish brown with central area slightly darker. Trochanters, femora, tibiae, and tarsi orangish, except brown outer and inner apices of femora, base of tibiae, and most of tarsal claws.

Head. – Slightly narrowed from behind eyes to prothorax. Frons narrow, vertical; smooth, glabrous centrally, sparsely, finely punctate laterally, each puncture with a minute, decumbent whitish seta. Antennal tubercles moderately elevated, close to each other, separated by deep sulcus; apex rounded; smooth, glabrous basally, sculpturing and setae as on sides of frons toward apex. Area between antennal tubercles and upper eye lobes somewhat sparsely and coarsely punctate; with sparse, short, subdecumbent yellowish-brown setae and long, erect setae of same color interspersed. Area between upper eye lobes sparsely, both coarsely and finely punctate; with sparse, both short and long yellowish-brown setae laterally, and sparse, minute yellowish-white setae centrally. Remaining surface of vertex and area behind upper eye

lobes somewhat abundantly, coarsely punctate, glabrous close to prothorax; area close to eye somewhat coarsely rugose-punctate, with sparse, both short and decumbent yellowish-white setae and long and erect yellowish-brown setae; central region of vertex, somewhat abundantly, finely punctate, with sparse, minute yellowish-white setae; sides of central area of vertex after eyes and superior central area behind upper eye lobes smooth, glabrous area behind lower eye lobes tumid close to eye; sparsely, somewhat finely punctate superiorly, longitudinally striate-punctate inferiorly; with sparse, long, erect yellowish-brown setae and a few short, decumbent yellowish-white setae on tumid area and area close to it, glabrous on remaining surface. Genae transversely depressed about middle; somewhat sparsely, finely punctate close to eye, densely, finely punctate on depressed area, smooth on apex; with yellowish-white pubescence except glabrous smooth area, pubescence denser close to eye; with a few long, erect yellowish-brown setae toward ventral surface. Gulamentum depressed, smooth, glabrous on posterior quarter; anterior region transversely sulcate, sparsely, somewhat coarsely punctate, with a few short yellowish-white setae; wide central region tumid, sparsely, somewhat coarsely punctate, with a few, both long and erect yellowish-brown setae and short and decumbent yellowish-white setae; intermaxillary process somewhat abundantly, finely punctate with coarse punctures interspersed, and moderately abundant, both long and erect yellowish-brown setae and short and decumbent yellowish-white setae. Wide central area of postclypeus abundantly, coarsely striate-punctate; with somewhat sparse, decumbent yellowish-white setae and long, erect setae of same color interspersed, except sides of area close to anteclypeus with long, erect yellowish-brown setae. Sides of postclypeus smooth, glabrous. Labrum coplanar with anteclypeus at posterior third, inclined on anterior 2/3; somewhat abundantly and coarsely punctate on posterior third and sides, smooth on remaining surface; with long, erect yellowish-brown setae, distinctly denser laterally and on anterior margin. Maxillary palpomere IV widened toward obliquely truncate apex; labial palpomere III cuneiform. Inner margin of upper eye lobes large, rounded. Distance between upper eye lobes 0.28 times distance between outer margins of eyes; distance between lower eye lobes ventrally 0.67 times distance between outer margins of eyes. Antennae 1.9 times elytral length, reaching elytral apex at basal third of antennomere VIII. Scape abundantly, coarsely punctate, except smooth narrow apex of dorsal surface; with yellowish-brown pubescence not obscuring integument, pubescence denser on basal third, and long, erect setae of same color interspersed, erect setae more abundant on posterior third. Antennomeres III - XI with abundant yellowish pubescence not obscuring integument; antennomeres III - V with a few long yellowish setae directed backward on apex; ventral surface of III - XI with dense, very long yellowish-brown setae.

Antennal formula based on length of antennomere III:

– Scape = 0.78. – Pedicel = 0.11. – IV = 0.98. – V = 0.96. – VI = 0.94. – VII = 0.84. – VIII = 0.77. – IX = 0.68. – X = 0.55. – XI = 0.60.

Thorax. – Prothorax wider than long (including lateral tubercles); lateral tubercles large, conical, apex directed upward, located centrally; anterior and posterior constrictions well marked. Pronotum with three large, elevated tubercles: one on each side of center, longitudinal, more elevated anteriorly and posteriorly, located from anterior constriction to near posterior constriction; another longitudinal, located centrally, almost as long as lateral tubercles; sparsely, finely punctate; not pubescent; several punctures between area near anterior margin and posterior constrictions with long, erect yellowish-brown seta. Sides of prothorax smooth, glabrous, except anterior region with shallow punctures and sparse, long, erect yellowish-brown setae. Prosternum strongly concave centrally in lateral view; posterior third smooth and glabrous, except sparse fine punctures and sparse and minute yellowish setae near procoxal cavities; central region transversely striate; anterior third sparsely somewhat finely punctate, with sparse, long, erect yellowish-brown setae. Prosternal process almost parallel-sided, with rounded apex; narrowest area 0.16 times procoxal width. Mesoventrite with very sparse pubescence centrally, almost absent close to mesoventral process, more abundant laterally close to mesocoxal cavities and mesanepisternum, except glabrous lateral apices. Mesanepisternum and mesepimeron with dense yellowish-white pubescence. Mesoventral process parallel-sided, apex strongly emarginate centrally, and surface concave; with yellowish-white pubescence not obscuring integument laterally, with long, erect yellowish-brown setae interspersed, almost glabrous centrally. Metanepisternum and sides of metaventrite with moderately abundant yellowish-white pubescence, pubescence sparser on remaining surface except glabrous central region; with long, erect yellowish-brown setae interspersed on pubescent region. Scutellum

with sparse, minute grayish-white pubescence, denser, longer on apical margin.

Elytra. – Abundantly, coarsely punctate on anterior half, punctures not aligned on circum-scutellar region, aligned on remaining anterior half, except smooth humerus; posterior half not punctate, except for a lateral row slightly surpassing anterior half, and row close to suture reaching posterior quarter, but punctures gradually finer, apex concave, with outer angle forming long spine and sutural angle with triangular projection; with abundant yellowish-white pubescence not obscuring integument (Fig. 36), except glabrous humerus; with long, erect yellowish-brown setae interspersed, setae gradually shorter dorsally from anterior third.

Legs. – Outer apex of femora rounded and inner apex triangularly projected; meso- and metafemora with minute white pubescence on club; all femora with sparse, long, erect yellowish setae throughout, except tuft of long, erect yellowish setae on each side of dorsal surface. Protibiae with a few minute, decumbent yellowish-white setae on basal 2/3 of dorsal surface, and abundant yellow setae on remaining surface, especially on posterior quarter; with sparse, long, erect yellowish setae interspersed. Meso- and metatibiae with a few, short, decumbent yellowish-white setae on basal 2/3 of dorsal surface, almost entire sides, and basal half of ventral surface; apical third of dorsal surface with dense, short, erect yellowish-brown setae, slightly sparser on metatibiae; remaining surface of ventral surface with bristly yellowish-brown setae, dense on apical quarter; with long, erect yellowish setae interspersed. Tarsi with moderately abundant, long, decumbent yellowish setae; metatarsomere I slightly shorter than II-III together.

Abdomen. – Ventrites 1-4 with abundant yellowish-white pubescence laterally, sparse centrally, except glabrous apex; with sparse, long, erect setae of same color interspersed. Ventrite 5 with abundant yellowish-white pubescence not obscuring integument, except glabrous anterocentral region; with long, erect setae of same color interspersed; apex rounded.

Dimensions (mm)

- Total length, 23.20;
- Prothoracic length, 3.45;
- Anterior prothoracic width (close to anterior constriction), 2.85;
- Posterior prothoracic width, 3.05;
- Maximum prothoracic width (between apices of lateral tubercles), 4.55;
- Humeral width, 4.80;
- Elytral length, 16.30.

Etymology. – The specific epithet “pubescens” (Latin, meaning hairy) refers to the pubescence of the elytra.

Remarks. – The general appearance of *Novantinoe pubescens* sp. nov. resembles that of some species of *Distenia* (*Distenia*) Lepeletier & Audinet-Serville, 1828, especially by the head not distinctly narrowed after eyes. However, the short basal area of the galea and the lateral tubercles of the prothorax large and with the apex directed upward indicate that it belongs to *Novantinoe*.

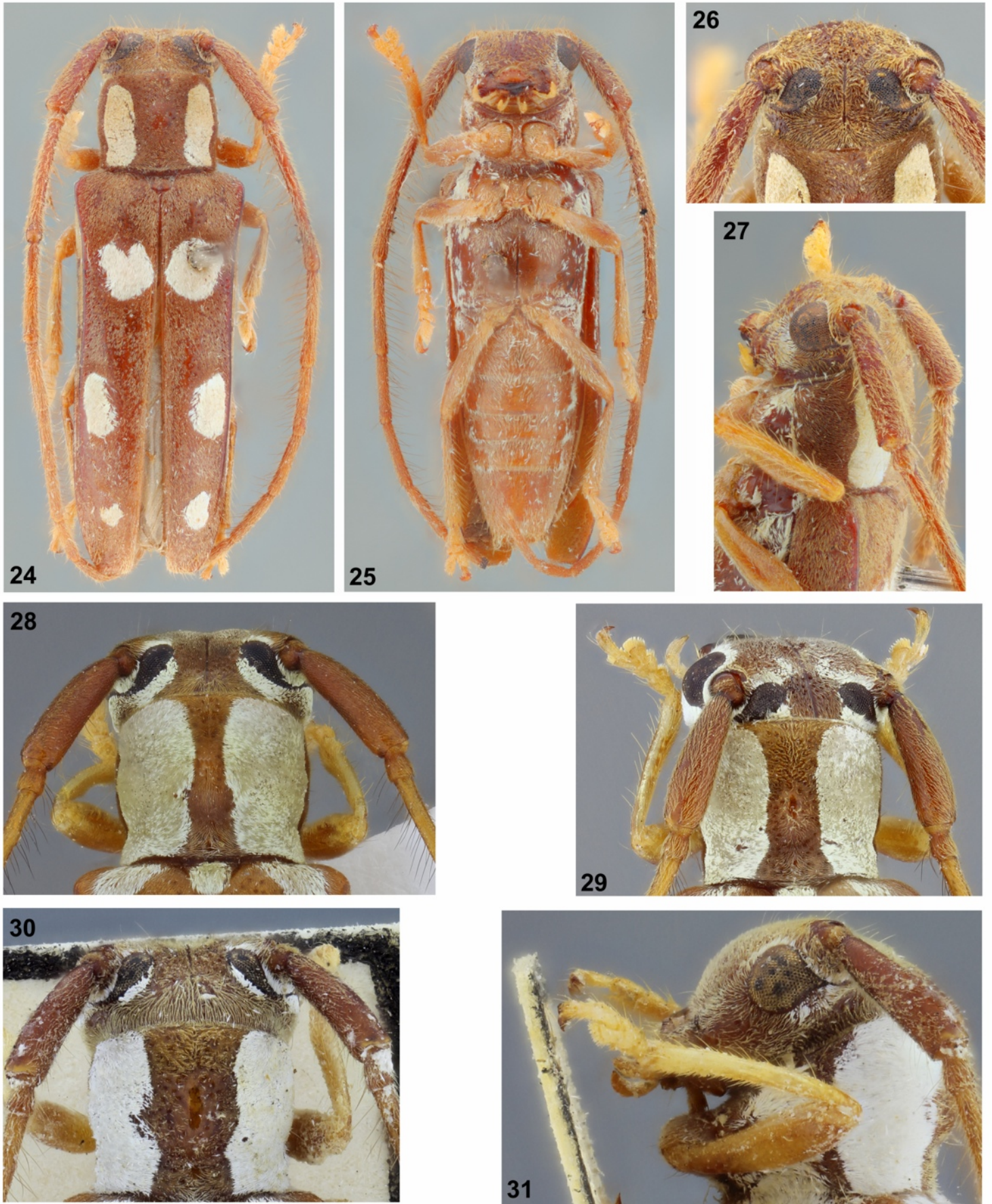
Among the species with the elytra densely pubescent, *Novantinoe pubescens* sp. nov. is more similar to:

- *N. germani* (Villiers, 1959) (Fig. 37),
- *N. iani* Santos-Silva & Hovore, 2007 (Fig. 38),
- *N. lezamai* Santos-Silva & Hovore, 2007 (Fig. 39).

However, it differs from these three species by the head not distinctly narrowed after the eyes, and meso- and metafemora not spiniform on outer apex.

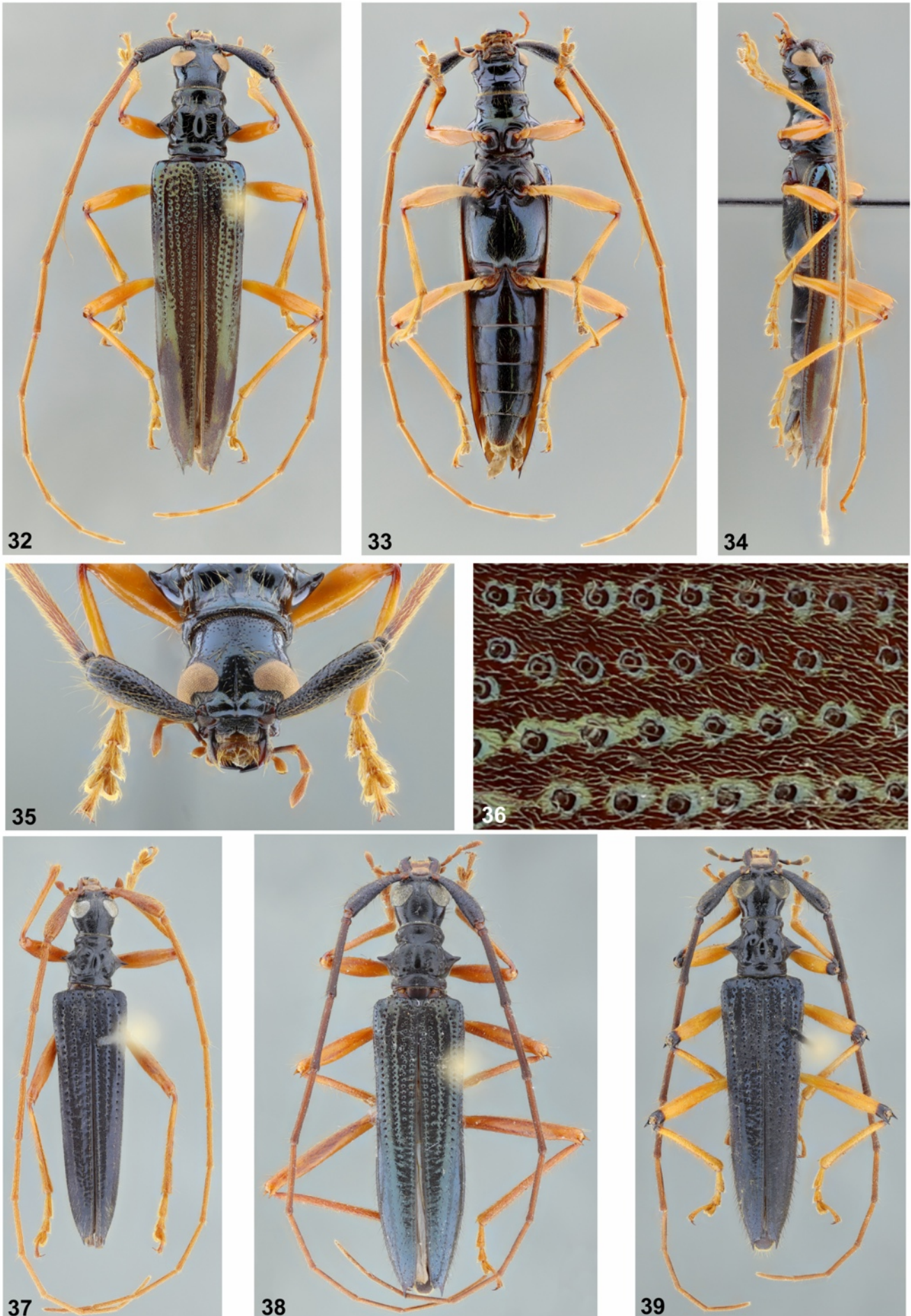
Additionally, it differs from:

- *N. germani* by the dark scape (orangish in *N. germani*);
- *N. iani* by the metafemora proportionally shorter and wide (longer and slender in *N. iani*);
- *N. lezamai* by the femora unicolorous (bicolorous in *N. lezamai*).



Figures 24-31. *Adesmus* spp.

24-27. *A. vulcanicus* Galileo & Martins, 1999, holotype ♀. 24. Dorsal habitus. 25. Ventral habitus. 26. Upper eye lobes. 27. Prothorax, lateral view.
 28-29. *A. martinsi* Wappes & Santos-Silva, 2017, upper eye lobes, paratypes ♀. 28. Specimen 1. 29. Specimen 2.
 30-31. *A. pulchellus* Galileo & Martins, 1999, holotype ♀. 30. Upper eye lobes. 31. Lower eye lobe.



Figures 32-39. *Novantinoe* spp.

32-36. *N. pubescens* sp. nov., holotype ♀. 32. Dorsal habitus. 33. Ventral habitus. 34. Lateral habitus. 35. Head, frontal view. 36. Elytral pubescence and punctures. 37. *N. germaini* (Villiers, 1959), ♂, dorsal habitus. 38. *N. iani* Santos-Silva & Hovore, 2007, paratype ♀, dorsal habitus. 39. *N. lezamai* Santos-Silva & Hovore, 2007, paratype ♂, dorsal habitus.

Novantinoe pubescens sp. nov. can be included in the alternative of couplet “36” from Botero & Almeida (2019) (modified):

- 36(35). Apex of metafemora with different shape: with outer long spine and inner triangular projection; or outer apex rounded and inner apex triangularly projected 37'
 — Apex of metafemora with outer short spine or triangular lobe and inner triangular lobe, or outer and inner spine, with the inner being shorter 38
- 37(36). Elytra pubescent; outer apex of metafemora rounded. Honduras *N. pubescens* sp. nov.
 — Elytra not pubescent; outer apex of metafemora with long spine 37
- 37(37'). Palpomeres and legs light orange; lateral tubercles of prothorax slender and long (Fig. 26); median gibbosity of pronotum more elevated. Ecuador *N. rileyi* Santos-Silva & Hovore, 2007
 — Palpomeres and legs dark; lateral tubercles of prothorax uniformly and gradually narrowed toward apex; median gibbosity of pronotum poorly elevated. Ecuador *N. vivida* Botero & Almeida, 2019

Acknowledgments

We thank the Taxonline Project (Projeto Taxonline—Rede Paranaense de Coleções Biológicas) for sending the photograph of the lectotype of *Sternidius naeviicornis* used in this work, which belong to the Coleção de Imagens de material-tipo J.S. Moure (CITIMOURE) of the entomological collection Pe. J.S. (DZUP). We also thank Jacques Rifkind, Rich Zack and Ron Cave for providing material for study.

References

- Bezark L.G., 2022a. – A photographic Catalog of the Cerambycidae of the World. New World Cerambycidae Catalog. Available from: <http://bezbycids.com/byciddb/wdefault.asp?w=n/> (Last accessed 18 November 2022.)
- Bezark L.G., 2022b. – Checklist of the Oxypeltidae, Vesperidae, Disteniidae and Cerambycidae, (Coleoptera) of the Western Hemisphere. 2021 Edition (updated through 31 December 2020).

Available from: <http://bezbycids.com/byciddb/wdefault.asp?w=n/> (Last accessed 18 November 2022.)

- Botero J.P. & Almeida L.M., 2019. – New species and new geographical records in Disteniidae (Coleoptera, Chrysomeloidea) with revised keys to species of *Novantinoe* and American species of *Distenia* (*Distenia*). *Zootaxa*. 4500(1): 40-58.
- Monné M.A., 2022a. – Catalogue of the Cerambycidae (Coleoptera) of the Neotropical region. Part II. Subfamily Lamiinae. Available from: <https://cerambycids.com/catalog/> (Last accessed 18 November 2022.)
- Monné M.A., 2022b. – Catalogue of the Cerambycidae (Coleoptera) of the Neotropical region. Part III. Subfamilies Lepturinae, Necydalinae, Parandrinae, Prioninae, Spondyliidiinae and Families Oxypeltidae, Vesperidae and Disteniidae. Available from: <https://cerambycids.com/catalog/> (Last accessed 18 November 2022.)
- Tavakilian G.L. & Chevillotte H., 2022. – Titan: base de données internationales sur les Cerambycidae ou Longicornes. Available from: <http://titan.gbif.fr/> (Last accessed 18 November 2022.)

Résumé

Bezark L. G., Santos-Silva A. & Botero J. P., 2023. – Nouveaux Cerambycidae et Disteniidae (Coleoptera) de la région néotropicale. *Faunitaxys*, 11(1): 1 – 13.

Quatre nouvelles espèces sont décrites de la région néotropicale: *Sternidius micromaculatus* sp. nov. (Lamiinae, Acanthocinini), from Belize; *Cymatonycha megagena* sp. nov. (Lamiinae, Desmiphorini), from Mexico (Chiapas); *Adesmus alboverticis* sp. nov. (Lamiinae, Hemilophini); and *Novantinoe pubescens* sp. nov. (Disteniidae), from Guatemala. Une clé du genre *Cymatonycha* Bates, 1874 est proposée, et *Novantinoe pubescens* sp. nov. est incorporée dans la clé déjà connue.

Mots-clés. – Cerambycidae, *Sternidius*, *Cymatonycha*, *Adesmus*, *Cymatonycha*, longicorne, taxonomie, nouvelles espèces, région néotropicale.

Faunitaxys

Volume 11, Numéro 1, Janvier 2023

SOMMAIRE

Nouveaux Cerambycidae et Disteniidae (Coleoptera) de la région néotropicale .

Larry G. Bezark, Antonio Santos-Silva & Juan Pablo Botero 1 – 13

CONTENTS

New species of Cerambycidae and Disteniidae (Coleoptera) from the Neotropical Region .

Larry G. Bezark, Antonio Santos-Silva & Juan Pablo Botero 1 – 13



Illustration de la couverture :

Le Grand Trou Bleu est un cénote sous-marin situé au large de la côte du Belize, en Amérique centrale. Il fait partie du Récif Lighthouse et il est protégé au sein de la barrière de corail du Belize.

Le trou est quasiment circulaire, d'un diamètre de plus de 300 mètres et d'une profondeur mesurée de 124 mètres.

À l'origine de sa formation, pendant la dernière période glaciaire lorsque les niveaux de mer étaient beaucoup plus bas, c'était une grotte calcaire. Lorsque le niveau de l'océan s'est élevé, les cavités souterraines ont été inondées, et le toit de cette grotte s'est effondré.

Crédits:

Jesus Santiago Moure : Fig. 6.

Antonio Santos-Silva : Fig. 1-5 & 7-39.

Tripadvisor - <https://www.tripadvisor.fr/> : Couverture.