



HAL
open science

Validation in the ESPOIR cohort of vitamin K-dependent protein S (PROS) as a potential biomarker capable of predicting response to the methotrexate/etanercept combination

Olivier Vittecoq, Clément Guillou, Julie Hardouin, Baptiste Gerard, Francis Berenbaum, Arnaud Constantin, Nathalie Rincheval, Bernard Combe, Thierry Lequerre, Pascal Cosette

► To cite this version:

Olivier Vittecoq, Clément Guillou, Julie Hardouin, Baptiste Gerard, Francis Berenbaum, et al.. Validation in the ESPOIR cohort of vitamin K-dependent protein S (PROS) as a potential biomarker capable of predicting response to the methotrexate/etanercept combination. *Arthritis Research & Therapy*, 2022, 24 (1), pp.72. 10.1186/s13075-022-02762-5 . hal-03935531

HAL Id: hal-03935531

<https://hal.science/hal-03935531>

Submitted on 23 May 2024

HAL is a multi-disciplinary open access archive for the deposit and dissemination of scientific research documents, whether they are published or not. The documents may come from teaching and research institutions in France or abroad, or from public or private research centers.

L'archive ouverte pluridisciplinaire **HAL**, est destinée au dépôt et à la diffusion de documents scientifiques de niveau recherche, publiés ou non, émanant des établissements d'enseignement et de recherche français ou étrangers, des laboratoires publics ou privés.



Distributed under a Creative Commons Attribution 4.0 International License

RESEARCH

Open Access



Validation in the ESPOIR cohort of vitamin K-dependent protein S (PROS) as a potential biomarker capable of predicting response to the methotrexate/etanercept combination

Olivier Vittecoq^{1,2*}, Clément Guillou³, Julie Hardouin³, Baptiste Gerard^{1,2}, Francis Berenbaum⁴, Arnaud Constantin⁵, Nathalie Rincheval⁶, Bernard Combe⁷, Thierry Lequerre^{1,2} and Pascal Cosette³

Abstract

Background: To validate the ability of PROS (vitamin K-dependent protein S) and CO7 (complement component C7) to predict response to the methotrexate (MTX)/etanercept (ETA) combination in rheumatoid arthritis (RA) patients who received this therapeutic combination in a well-documented cohort.

Method: From the ESPOIR cohort, RA patients having received the MTX/ETA or MTX/adalimumab (ADA) combination as a first-line biologic treatment were included. Serum concentrations of PROS and CO7 were measured by ELISA prior to the initiation of ETA or ADA, at a time where the disease was active (DAS28 ESR > 3.2). The clinical efficacy (response/non-response) of both combinations has been evaluated after at least 6 months of treatment, according to the EULAR response criteria with some modifications.

Results: Thirty-two were treated by MTX/ETA; the numbers of responders and non-responders were 24 and 8, respectively. Thirty-three patients received the MTX/ADA combination; 27 and 5 patients were respectively responders and non-responders. While there were no differences for demographic, clinical, biological, and X-rays data, as well as for CO7, serum levels of PROS tended to be significantly higher in responders to the MTX/ETA combination ($p = 0.08$) while no difference was observed in the group receiving MTX/ADA. For PROS, the best concentration threshold to differentiate both groups was calculated at 40 $\mu\text{g/ml}$ using ROC curve. The theranostic performances of PROS appeared better for the ETA/MTX combination. When considering the response to this combination, analysis of pooled data from ESPOIR and SATRAPE (initially used to validate PROS and CO7 as potential theranostic biomarkers) cohorts led to a higher theranostic value of PROS that became significant ($p = 0.009$).

Conclusion: PROS might be one candidate of a combination of biomarkers capable of predicting the response to MTX/ETA combination in RA patients refractory to MTX.

Trial registration: ClinicalTrials.gov identifiers: [NCT03666091](https://clinicaltrials.gov/ct2/show/study/NCT03666091) and [NCT00234234](https://clinicaltrials.gov/ct2/show/study/NCT00234234).

Keywords: PROS, CO7, Prediction, Rheumatoid arthritis, Etanercept, Adalimumab, Response, Biomarker

Background

Rheumatoid arthritis (RA) is one of the most common chronic inflammatory rheumatism affecting 0.8% of the world's population. To face this pathology, several molecules targeting pro-inflammatory compounds of the

*Correspondence: vittecoq.olivier@wanadoo.fr

² Inserm 1234 (PANTHER), F76000 Rouen, France

Full list of author information is available at the end of the article



© The Author(s) 2022. **Open Access** This article is licensed under a Creative Commons Attribution 4.0 International License, which permits use, sharing, adaptation, distribution and reproduction in any medium or format, as long as you give appropriate credit to the original author(s) and the source, provide a link to the Creative Commons licence, and indicate if changes were made. The images or other third party material in this article are included in the article's Creative Commons licence, unless indicated otherwise in a credit line to the material. If material is not included in the article's Creative Commons licence and your intended use is not permitted by statutory regulation or exceeds the permitted use, you will need to obtain permission directly from the copyright holder. To view a copy of this licence, visit <http://creativecommons.org/licenses/by/4.0/>. The Creative Commons Public Domain Dedication waiver (<http://creativecommons.org/publicdomain/zero/1.0/>) applies to the data made available in this article, unless otherwise stated in a credit line to the data.

immune system have been developed successfully. They are authorized for the treatment of RA, and the most prescribed are biologic DMARDs (bDMARDs) targeting cytokines. However, clinicians observe that about 30–40% of treated patients do not respond to these biomolecules. Given the heterogeneity of patients' response to the different treatments and the adverse effects related to these treatments (infections, cancers, allergic reactions), but also the increasing number of molecules available for sale, the ability to predict response to treatment has become a very important issue in RA.

So far, only a few studies backed by proteomic analysis have sought to identify predictive markers of response to treatments. Trocmé et al. identified, by a SELDI approach, 5 proteins differentially expressed between patients responding and not responding to infliximab, responders showing overexpression of apolipoprotein A1, and a subexpression of platelet factor 4 [1]. Besides, prediction of response to etanercept (ETA) was evaluated by three studies using proteomic tools. The first one based on a multiparametric approach combining antigenic and cytokine profiles in 3 different cohorts (21 to 43 patients) enabled the identification of a combination of 24 biomarkers whose performances (VPP of 58 to 72% and VPN from 63 to 78%) were limited [2]. A second study evaluated the interest of a chip of 12 cytokines in 33 proven RA patients. It showed that high serum concentrations of MCP-1 and epidermal growth factor (EGF) were associated with a good response to treatment [3]. In the third study using 2D gel electrophoresis and mass spectrometry for analysis of 50 sera from RA patients treated by ETA, four proteins (haptoglobin-alpha 1; haptoglobin-alpha 2, vitamin D-binding protein, apolipoprotein C-III) were differentially expressed in responders and non-responders [4]. More recently, a multivariate model combining three biomarkers (prealbumin, platelet factor 4, and S100A2) was proposed to accurately predict the response of RA patients to TNF inhibitors [5]. Considering both proteomic data and those obtained from complementary approaches also based on *a priori* knowledge such as pharmacogenetics, transcriptomics, and metabolomics, the panel of candidate markers for predicting the response to TNF-alpha antagonists is particularly high [6]. However, except for the interferon signature, there is no robust biomarker able to predict response to TNF-antagonists [6]. Indeed, the main issue is the absence of replication of these data in independent populations. Thus, to date, there is no tool available to predict the response to a biological product prior to its administration.

In a recent study, we have identified potential predictive markers of the response to the MTX/ETA combination in RA patients. In this regard, from a cohort of 22

patients with active RA that was treated with the MTX/ETA combination, a blood sample was collected prior to treatment for biomarkers research. By comparing the expression profiles of serum proteins of responding and non-responding patients by differential proteomic analysis (label-free approach), 12 proteins have been shown to be regulated differently depending on the patient's response status to the treatment. Independent tests on a new cohort of 20 patients confirmed these results by two orthogonal approaches (ELISA tests and label-free analyses). Among these 12 biomarkers, 2 proteins, PROS (vitamin K-dependent protein S) and CO7 (complement component C7), were particularly discriminating. With quantifications by ELISA of these 2 proteins, it was possible to determine, via ROC curves, the concentration thresholds associated with an appropriate classification of the patients as responders or non-responders. By combining the 2 concentration thresholds, the sensitivity and specificity were respectively 75% and 100% [7]. In addition, in this combination of 12 molecules, the protein S100A9 represented another interesting biomarker candidate of MTX/ETA response in RA [8]. Nevertheless, the theranostic value of serum S100A9 was not confirmed in a large UK RA cohort treated by ETA [9].

Now, the theranostic interest of this set of 2 protein biomarkers requires to be replicated in an enlarged independent RA population. So, the main objective of this work was to validate the ability of PROS and CO7 proteins to predict response to the MTX/ETA combination in patients who received this therapeutic combination in the ESPOIR cohort. The secondary objective was to determine whether the theranostic interest of this combination of 2 proteins, PROS and CO7, is specific to MTX/ETA combination by testing it in patients who received a MTX/adalimumab (ADA) in the ESPOIR cohort.

Methods

Patients

The present study is based on subgroups of RA patients from the ESPOIR cohort, a large French multicentric, longitudinal, and prospective cohort [10]. Briefly, 813 patients who had undifferentiated arthritis or RA, of less than 6 months disease duration, DMARD, and steroid naïve, were included and followed during at least 10 years. RA patients who met the ACR/EULAR 2010 classification criteria [11], with an active disease defined by a DAS28-ESR > 3.2, and having received, after failure of one or more conventional DMARDs (cDMARDs), treatment with MTX/ETA or MTX/ADA for at least 6 months, were integrated in this study. Among the 104 patients who were treated with ETA and 98 patients with ADA, an average of 70–80% of them received anti-TNF in combination with MTX.

Data collected

Demographic data (age, sex, body mass index, tobacco use), as well as characteristics of these two groups of patients [age of rheumatism, number of painful joints (out of 28), number of swollen joints (out of 28), DAS28-ESR, overall assessment of the disease by the patient using visual analog scale (0–10), functional impairment (HAQ index), autoimmune profile (rheumatoid factor and anti-CCP), systemic inflammation (CRP and ESR levels), conventional treatments already received, weekly dose of MTX, daily dose of prednisone], have been collected during the visit preceding the initiation of ETA or ADA.

DAS28-ESR was also calculated during a visit to evaluate treatment response (between 6 and 12 months of treatment depending on the date of the visit, as the response can only be evaluated after at least 6 months of consecutive treatment).

Biological methodology

Serum samples

The analysis has been focused on a single serum sample, i.e., the one collected during the visit preceding the introduction of anti-TNF (which may take place several weeks after the visit but less than 6 months) at a time where the disease was active (DAS28 ESR > 3.2) during serum sampling. The doses of MTX and glucocorticoids had to be stable before the visit to collect the serum sample. The

dose of prednisone was less than or equal to 10 mg/day. One biological resources center (J. Benessiano, Paris-Bichat) was in charge of centralizing and managing biological data collection. S. Martin (Bichat Hospital, Paris) did all the central dosages of CRP, IgM rheumatoid factor, and anti-CCP antibodies.

Sera collected from patients included in the SATRAPE study (ClinicalTrials.gov identifier: NCT00234234), where some of them were used for validation of the theranostic combination in the previous work [7], have also been analyzed herein with those coming from the ESPOIR cohort to have a significant sample size to draw relevant conclusions.

ELISA

Serum concentrations of PROS and CO7 have been measured prior to the initiation of ETA or ADA treatment by ELISA using the supplier’s instructions (USCNK from USA and EIAAB from China, respectively).

Criterion of judgment

The clinical efficacy of the MTX/ETA and MTX/ADA combinations has been evaluated after at least 6 months of treatment. The response/non-response have been defined according to the EULAR response criteria with some modifications. Indeed, among the moderate responders, patients exhibiting a response close to good response were included in the responder group while

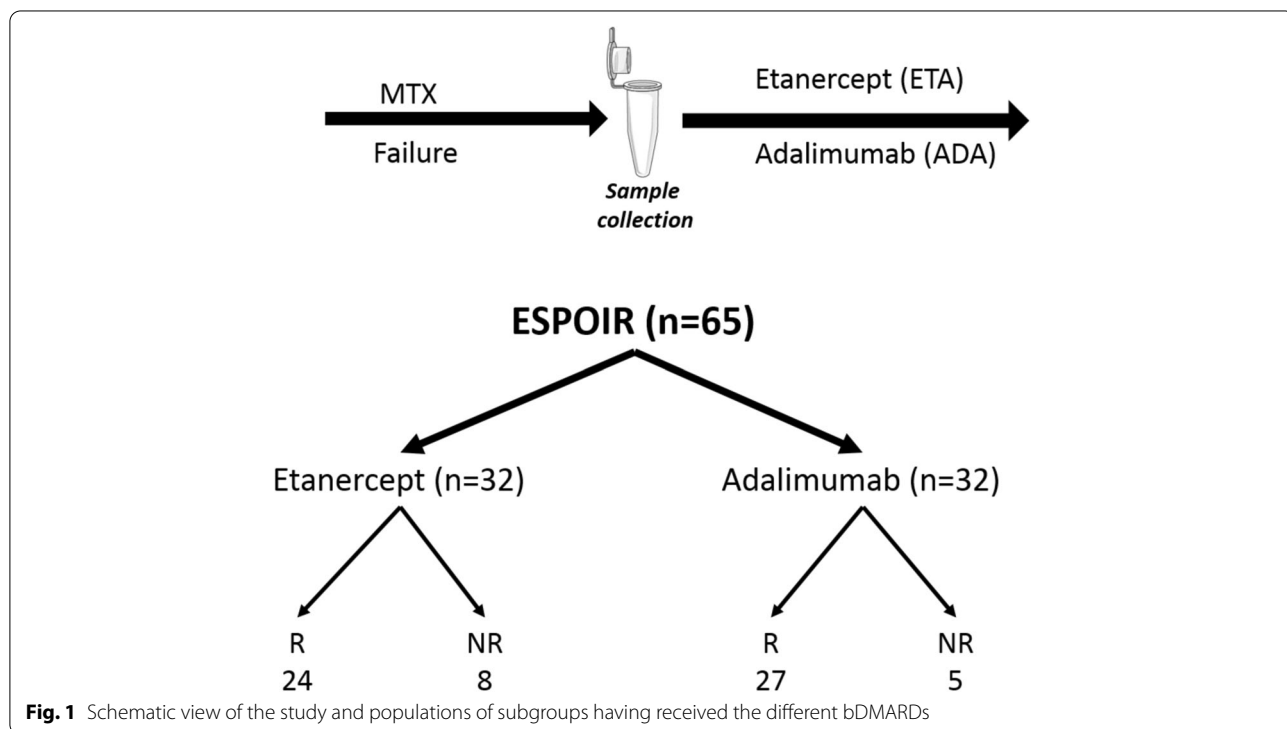


Fig. 1 Schematic view of the study and populations of subgroups having received the different bDMARDs

Table 1 Characteristics of the whole population studied and of each subgroup treated by methotrexate/etanercept or methotrexate/adalimumab according to the responder/non-responder status in the ESPOIR cohort

	Whole population	Patients under MTX/etanercept		Patients under MTX/adalimumab	
		Responders (n=24)	Non responders (n=8)	Responders (n=27)	Non responders (n=5)
Age (years)	49 ± 2	49 ± 3	53 ± 5	48 ± 2	52 ± 6
Female/male ratio	51/13	18/6	8/0	22/5	3/2
Body mass index (kg/m ²)	24.4 ± 0.6	24.6 ± 0.7	26.9 ± 2.4	24.3 ± 1	20.5 ± 0.7
Tobacco user (%)	20%	25%	13%	22%	0%
Disease duration (months)	32 ± 3	35 ± 4	46 ± 8	26 ± 4	21 ± 7
ACR/EULAR criteria fulfillment (%)	100%	100%	100%	100%	100%
ACR 1987 criteria fulfillment (%)	88%	92%	75%	85%	100%
Share epitope (at least one) (%)	64%	63%	63%	52%	60%
DAS 28 ESR	5.242 ± 0.141	5.279 ± 0.248	4.780 ± 0.290	5.417 ± 0.217	4.864 ± 0.573
Tender joint count/28 (n)	10 ± 1	10 ± 1	10 ± 3	10 ± 1	11 ± 4
Swollen joint count/28 (n)	7 ± 1	7 ± 1	4 ± 1	8 ± 1	5 ± 1
ESR 1st hour (mm)	28 ± 3	27 ± 4	32 ± 11	26 ± 5.0	36 ± 8
CRP (mg/L)	27.1 ± 5.0	38.9 ± 10.8	30.0 ± 17.7	18.6 ± 4.6	12.4 ± 7.2
Global activity VAS (by patient)	59.5 ± 2.7	56.3 ± 5.0	53.4 ± 5.0	64.6 ± 3.9	56.2 ± 3.9
Rheumatoid factor IgM	Positivity (%)	73%	83%	67%	80%
	Titer (IU/mL)	202 ± 91	360 ± 240	72 ± 37	115 ± 33
Anti-CCP	Positivity (%)	64%	71%	63%	80%
	Titer (AU/mL)	1013 ± 250	1533 ± 589	207 ± 115	760 ± 228
HAQ (/3)	1.04 ± 0.08	1.05 ± 0.12	1.03 ± 0.21	1.02 ± 0.11	1.15 ± 0.34
Total Sharp score	5.7 ± 1.2	8.9 ± 2.7	2.9 ± 1.7	4.6 ± 1.2	1.2 ± 1.2
Erosion Sharp score	2.1 ± 0.7	3.5 ± 1.8	1.4 ± 1.2	1.4 ± 0.6	0.7 ± 0.7
Corticoids dose (mg/day)	4.4 ± 0.6	4.2 ± 0.9	4.1 ± 1.5	4.7 ± 0.9	3.4 ± 1.7
MTX dose (mg/week)	15.9 ± 0.6	17.2 ± 0.9	16.9 ± 1.0	14.3 ± 0.9	15.0 ± 1.8

Data are expressed in mean ± standard deviation unless indicated otherwise

those having a response close to non-response were integrated in the non-responder group. Thus, in this context of personalized medicine where the interest is to identify non-responders or good responders, the other moderate responders were not analyzed in the present study (see the “Statistical analysis” section).

Statistical analysis

Among moderate responders, those having a delta DAS28 ESR > 1.2 and a final DAS 28 between 3.2 and 5.1 were considered as responders ($n = 3$ for ADA and $n = 6$ for ETA); patients with a delta DAS28 ESR between 0.6 and 1.2 and a final DAS 28 ESR between 3.2 and 5.1 were categorized as non-responders ($n = 1$ for ADA and ETA). Other subgroups (delta DAS28 ESR between 0.6 and 1.2 and final DA28 < or = 3.2; delta DAS28 ESR > 1.2 and final DAS28 > 5.1) remained qualified as moderate responders and were not included in the analysis as stated previously.

The unpaired *t*-test (with Welch correction) was used to compare the population characteristics and protein

levels between the 2 groups (responder/non-responder) for each drug combination (MTX/ETA and MTX/ADA). Receiver operating characteristic (ROC) curves were performed to determine the best concentration threshold able to discriminate responders and non-responders in ETA/MTX and ADA/MTX combinations. Performances in terms of sensitivity, specificity, and positive and negative predictive values were calculated.

The same approach was carried out using pooled data from the ESPOIR cohort and those obtained from the cohort of 16 patients used to evaluate by ELISA the two highly discriminating proteins, PROS and CO7, in the previous work [7].

The ROC curves were calculated using Prism/GraphPad software, and the predictive accuracy of each protein, as well as the combination of both, was assessed using the area under the ROC curve. The calculated thresholds resulting from ROC curves analyses allowed to categorize patients into responders (concentration above calculated threshold) and non-responders.

Results

Populations studied

From this analysis that was carried out using the ESPOIR database, only 65 fulfilled the following criteria: TNF-blocking agent in combination with MTX, biologic naïve, DAS28 ESR > 3.2 at ETA (or ADA) initiation, serum available during the 6 months preceding the introduction of anti-TNF, and assessment of the clinical response as stated in the “Biological methodology” section. Among these 65 patients, 32 were treated by MTX/ETA; the numbers of responders and non-responders were 24 and 8, respectively.

Thirty-three patients received the MTX/ADA combination and 27 and 5 patients were responders and non-responders according to the EULAR criteria with some modifications as stated in the “Statistical analysis” section (Fig. 1).

For the pooled analysis, data from 9 responders and 7 non-responders of the population used for the first validation of the theranostic combination [7] were integrated.

Characteristics of the population

Demographic, clinical, biological, radiological, and therapeutic data are summarized in Table 1. No statistical

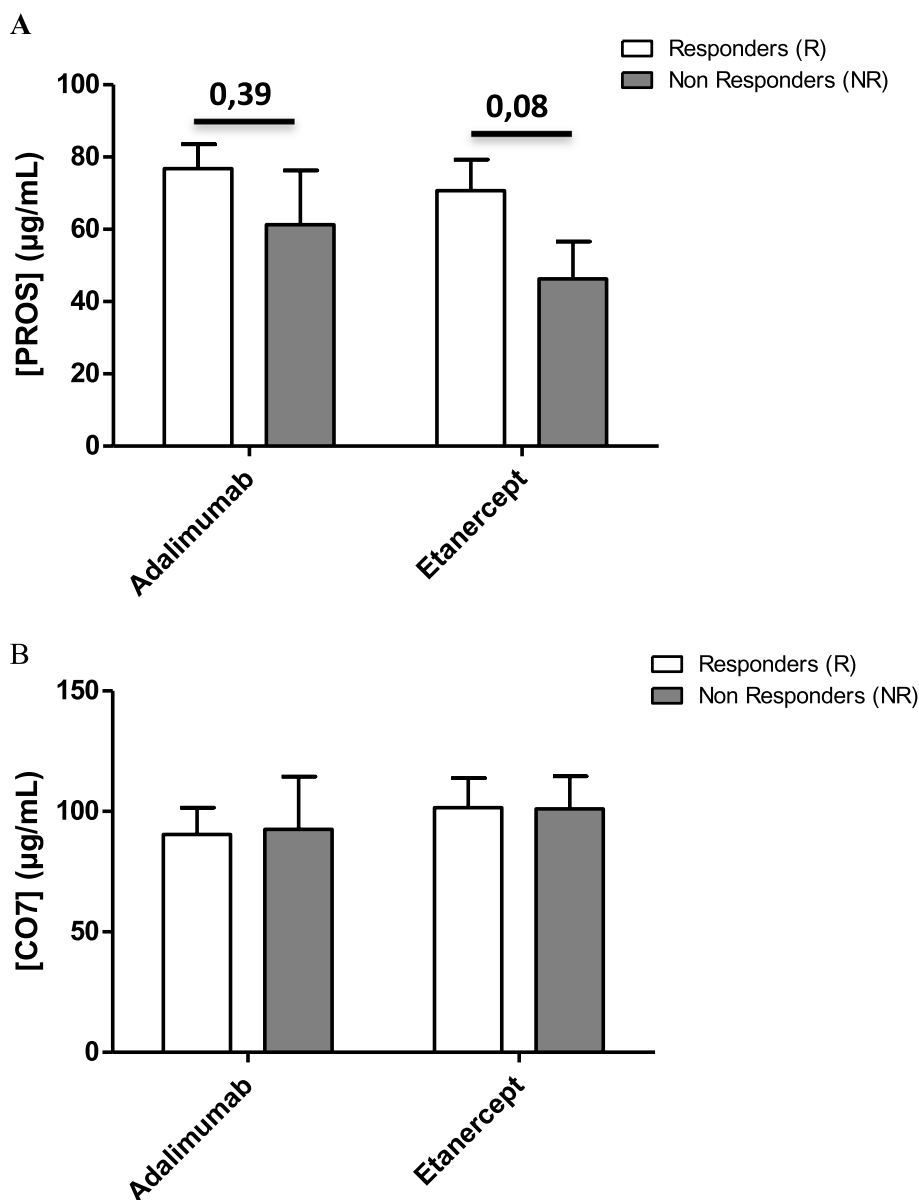


Fig. 2 Protein levels for the different classes of patients. Serum PROS (a) or CO7 (b) concentrations in responders (n=24 for ETA/MTX and n=27 for ADA/MTX) and non-responders (n=8 for ETA/MTX and n=5 for ADA/MTX) prior to methotrexate/etanercept or methotrexate/adalimumab initiation in RA patients who have failed to methotrexate in the ESPOIR cohort

differences were observed between responder and non-responder groups for each drug combination. Characteristics of RA patients from the SATRAPE study have already been published [7].

Theranostic value of PROS and CO7 in the ESPOIR cohort

In the ESPOIR cohort, serum levels of PROS tended to be significantly higher in responders to the MTX/ETA combination ($p = 0.08$) (Fig. 2a) while no difference was observed in the group receiving MTX/ADA. Concerning the CO7 protein, whatever the combination (MTX/ETA or MTX/ADA), their serum concentrations were comparable between responders and non-responders (Fig. 2b).

For PROS, the best concentration threshold has been determined using ROC curve ($AUC = 0.65$) to differentiate responders from non-responders in each drug combination; it was calculated at 40 $\mu\text{g/ml}$ (Fig. 3a). The theranostic performances of PROS appear better for the ETA/MTX combination (Fig. 3b). Since no differences were observed between

responders and non-responders in terms of clinical features at baseline for both drug combinations, no adjustment was required for this analysis.

Theranostic value of PROS, CO7, and PROS/CO7 combination in both populations when considering the response to MTX/ETA combination

Analysis of pooled data obtained from both populations led to a higher theranostic value of PROS that became significant while only a trend was observed when applied to ESPOIR cohort ($p = 0.009$ versus 0.08) (Fig. 4a). Indeed, AUC of ROC curve is better (0.72 vs 0.65) and, using the same threshold ($> 40 \mu\text{g/ml}$), the specificity is also better (73% versus 50%). But, although the predictive value of CO7 for the response to ETA/MTX treatment remained limited, combining the concentration threshold of each protein led to a better AUC (0.75) and a right classification, in terms of positive- and negative-predictive values as illustrated in Fig. 4b, c. Once again, no adjustment was made for this analysis.

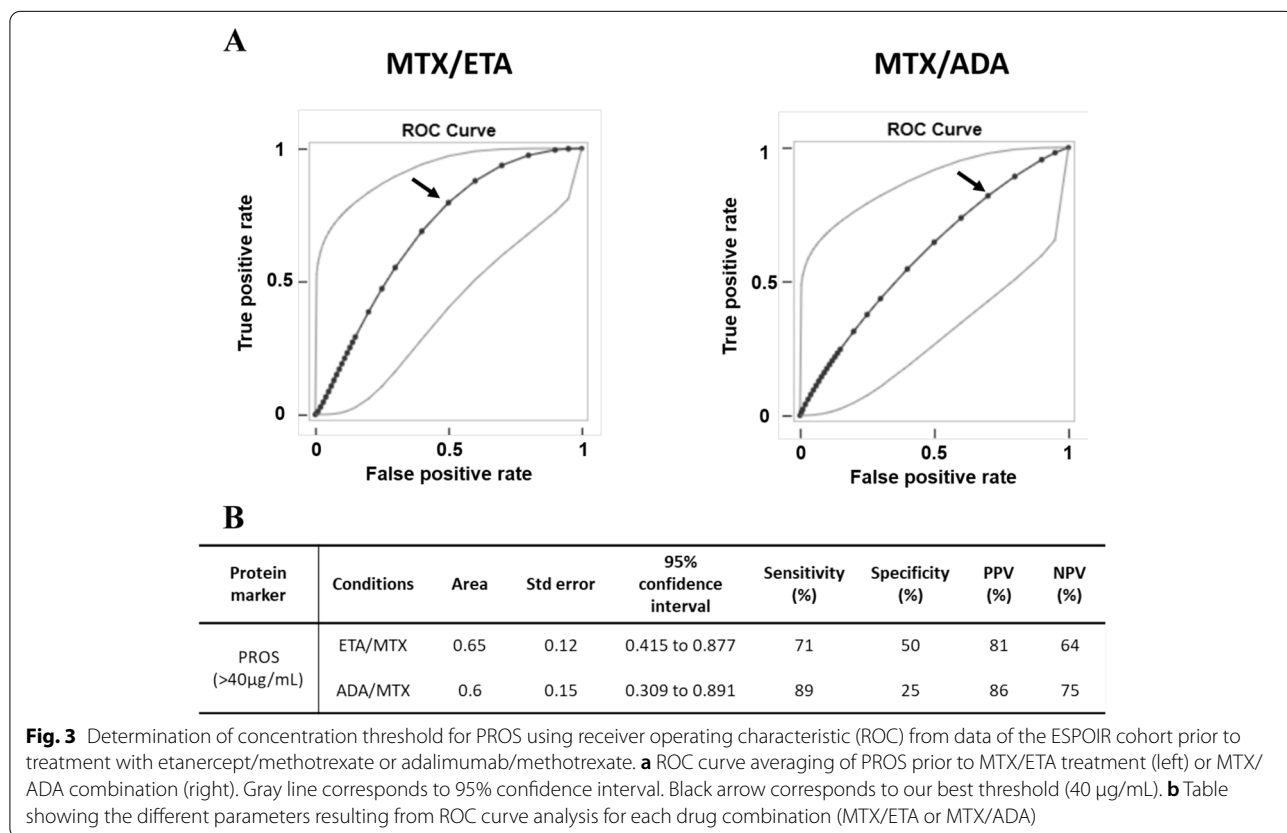
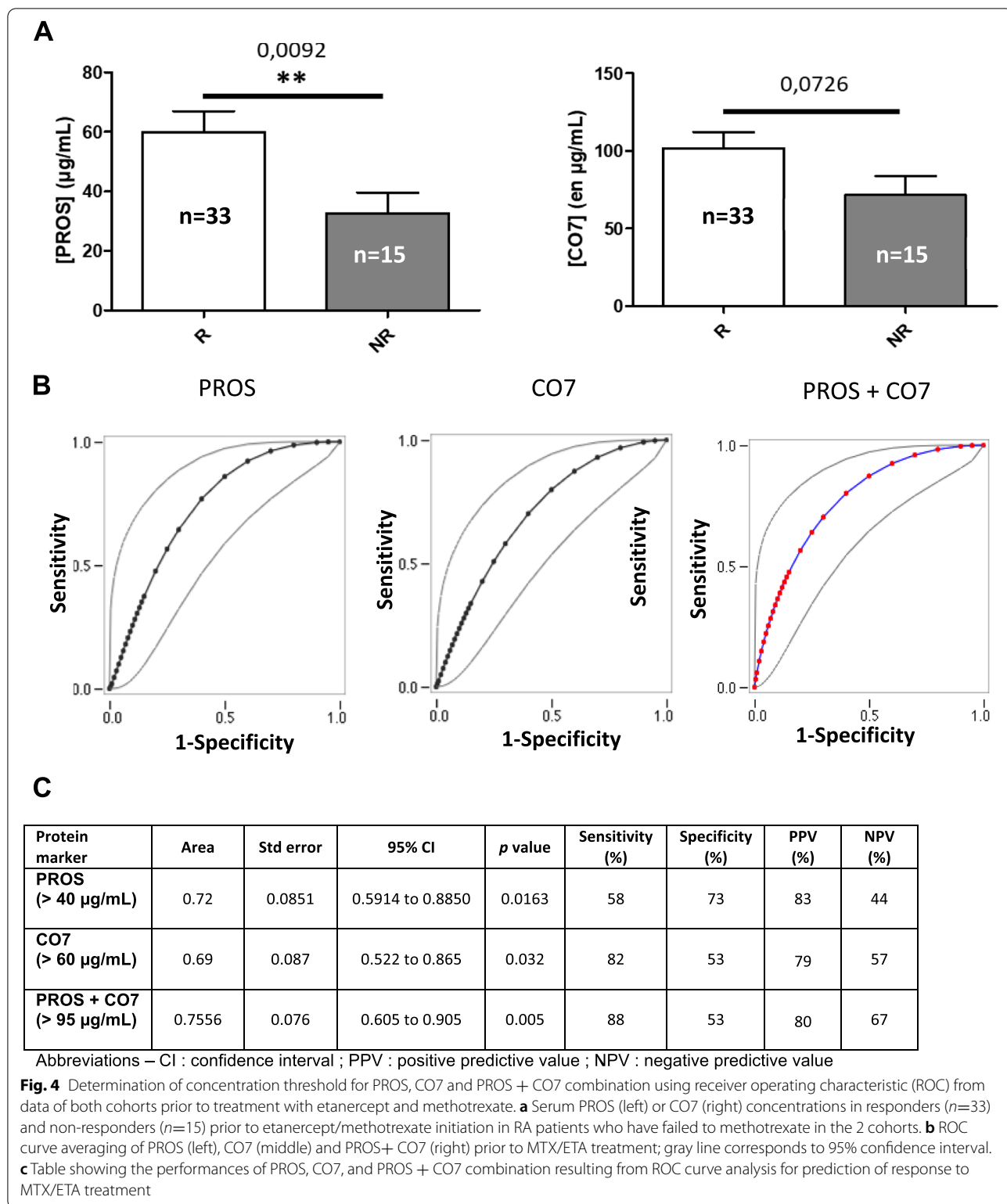


Fig. 3 Determination of concentration threshold for PROS using receiver operating characteristic (ROC) from data of the ESPOIR cohort prior to treatment with etanercept/methotrexate or adalimumab/methotrexate. **a** ROC curve averaging of PROS prior to MTX/ETA treatment (left) or MTX/ADA combination (right). Gray line corresponds to 95% confidence interval. Black arrow corresponds to our best threshold (40 $\mu\text{g/ml}$). **b** Table showing the different parameters resulting from ROC curve analysis for each drug combination (MTX/ETA or MTX/ADA)



Discussion

Because of the lack of tool capable of predicting the response/non-response to bDMARDs, practitioners currently perform an empirical choice between different

treatments. Thus, accurate prediction of bDMARDs responses can provide valuable information on effective drug selection. Anti-TNF drugs are generally prescribed as a second-line treatment after methotrexate. Until now,

a large panel of biomarkers has been identified as potential predictive factors of response to TNF-antagonists but almost none were really replicated in an independent population. Therefore, the objective of this study was to validate the theranostic value of 2 biomarkers by testing their concentrations in serum samples from patients receiving the MTX/ETA or MTX/ADA combination in the ESPOIR cohort, in a well-defined condition which is failure to conventional DMARDs.

While CO7 seems to have no predictive value of response to ETA/MTX in this population, PROS has a certain relevance as a theranostic marker, even though the statistical significance of this finding is not achieved. Indeed, the potential theranostic interest of PROS has been highlighted since higher serum levels have been detected in biologic naïve patients who were responders to MTX/ETA, that is in concordance with our previous results [7]. Despite a lack of statistical power, probably due to the low number of patients in the non-responders group, we can consider that the theranostic value of PROS has been, in part, replicated. To overcome this issue, we have pooled data obtained from 2 different populations including that used for the validation of the set of proteins we had identified in the previous work [7]. With such an approach that allowed to make the sample size of the non-responder group more appropriate, the theranostic value of PROS appears more robust. More importantly, the addition of CO7 to PROS, when both proteins are considered with their own concentration threshold related to the better classification, improves the theranostic performances of PROS.

Taken together, these findings might suggest that high levels of PROS would lead to the initiation of ETA (rather than adalimumab since there was no difference between responders and non-responders with this molecule) after failure of MTX. In other words, faced to a RA patient refractory to cDMARDs, when we consider 2 TNF-antagonists (ETA and ADA), the theranostic value of PROS is more specific to ETA. That of the PROS/CO7 combination might be more relevant. Such data cannot be extrapolated to other profiles of patients, particularly those who had an inadequate response to one or several bDMARDs.

To our knowledge, to date, there is no biomarker for use in routine clinical practice for predicting at an individual patient level the response in a drug-specific or even class-specific manner. Indeed, a recent meta-analysis focused on assessment of prediction of treatment response in early RA was limited by the availability of only a small number of external validation studies in this topic. It suggested that there was, in general, insufficient evidence that the effect of treatment depended on baseline characteristics [12], even though some preliminary

studies suggest that, in RA patients having an inadequate response to MTX, those having a disease of limited duration associated with high levels of anti-CCP antibodies and/or with presence of shared epitope, had higher efficacy responses versus ADA after 24 weeks [13, 14].

Conclusions

PROS might be one candidate of a combination of biomarkers capable of predicting the response to MTX/ETA combination in RA patients refractory to MTX. However, when considered alone, its theranostic value, which has been replicated in an independent cohort, remains limited. Other biomarkers of this combination might be identified by integrative biology which is a fast-expanding field. In this respect, some machine learning approaches, either based on clinical profiles with additional genetic information or on multiomics signatures (transcription and/or DNA methylome in peripheral blood mononuclear cells, monocytes, and CD4+ T cells), have shown encouraging findings in guiding treatment decisions and particularly to identify non-responders to TNF-blocking or to accurately predict response before ADA and ETA treatment, respectively [15, 16]. We can hypothesize that the performances of those models might be improved by additional data of biomarkers such as PROS and to a lesser degree CO7.

Abbreviations

PROS: Vitamin K-dependent protein S; CO7: Complement component C7; MTX: Methotrexate; ETA: Etanercept; ADA: Adalimumab; RA: Rheumatoid arthritis; bDMARDs: Biologic disease-modifying anti-rheumatic drugs; cDMARDs: Conventional DMARDs; DAS: Disease activity score; ESR: Erythrocyte sedimentation rate.

Acknowledgements

We wish to thank all the investigators who recruited and followed the patients (F. Berenbaum, Paris-Saint Antoine; M.C. Boissier, Paris-Bobigny; A. Cantagrel, Toulouse; B. Combe, Montpellier; M. Dougados, Paris-Cochin; P. Fardellone and P. Boumier Amiens; B. Fautrel, Paris-La Pitié; R.M. Flipo, Lille; P. Goupille, Tours; F. Liote, Paris-Lariboisière; O. Vittecoq, Rouen; X. Mariette, Paris-Bicetre; O. Meyer and P. Dieude, Paris-Bichat; A. Saraux, Brest; T. Schaefferbeke, Bordeaux; J. Sibilia, Strasbourg).

Authors' contributions

OV, CG, TL, and PC designed and supervised the project; BC and NR supervised the ESPOIR cohort; NR did expert monitoring and data management of the ESPOIR cohort; CG, JH, and PC performed the experiments; OV, CG, JH, BG, FB, AC, BC, TL, and PC analyzed and interpreted the data; OV, CG, and PC wrote the manuscript with the help of all authors who revised the draft critically and approved the final version of the article.

Funding

An unrestricted grant from Merck Sharp and Dohme (MSD) was allocated for the first 5 years. Two additional grants from INSERM were obtained to support part of the biological database. The French Society of Rheumatology, Pfizer, Abbvie, Lilly also supported the ESPOIR cohort study. For the present study, the investigators have obtained a grant from Pfizer (Passerelle bursary).

Availability of data and materials

The datasets used and/or analyzed during the current study are available from the corresponding author on reasonable request. All data and material concerning ESPOIR cohort are available in the website: <http://www.lacohortee.spoir.fr/>.

Declarations

Ethics approval and consent to participate

The ESPOIR study was conducted with the approval of the Institutional Review Board of Montpellier University Hospital. All patients gave their signed informed consent to participate in the cohort (ClinicalTrials.gov identifier: NCT03666091). Concerning patients included in the SATRAPE study (ClinicalTrials.gov.identifier: NCT00234234), the study was approved by the regional ethics committee (CPP Nord Ouest 1, France) and all participants gave written informed consent at the time of enrolment.

Consent for publication

No individual person's data are present in the manuscript. All data are completely anonymized.

Competing interests

The authors declare that they have no competing interests.

Author details

¹Rouen University Hospital, Department of Rheumatology & CIC-CRB1404, Normandie Univ, UNIROUEN, F 76000 Rouen, France. ²Inserm 1234 (PANTHER), F76000 Rouen, France. ³Normandie Univ, PISSARO Proteomics Facility, IRIB, 76130 Mont-Saint Aignan, France & PBS-UMR6270 CNRS, FR3038 CNRS, 76130 Mont-Saint Aignan, France. ⁴Department of Rheumatology, AP-HP Saint-Antoine Hospital, Sorbonne University, Inserm CRSA, Paris, France. ⁵Rheumatology Department, Toulouse University Hospital, UMR 1043 & Université Toulouse III-Paul Sabatier, Toulouse, France. ⁶Unit of Statistics, Institute of Clinical Research EA2415, Montpellier University, Montpellier, France. ⁷Rheumatology Department, CHU Montpellier, Montpellier University, Montpellier, France.

Received: 24 January 2022 Accepted: 24 February 2022

Published online: 21 March 2022

References

- Trocmé C, Marotte H, Baillet A, Pallot-Prades B, Garin J, Grange L, et al. Apolipoprotein A-I and platelet factor 4 are biomarkers for infliximab response in rheumatoid arthritis. *Ann Rheum Dis*. 2009;68:1328–33.
- Hueber W, Tomooka BH, Batliwalla F, Li W, Monach PA, Tibshirani RJ, et al. Blood autoantibody and cytokine profiles predict response to anti-tumor necrosis factor therapy in rheumatoid arthritis. *Arthritis Res Ther*. 2009;11:R76.
- Fabre S, Dupuy AM, Dossat N, Guisset C, Cohen JD, Cristol JP, et al. Protein biochip array technology for cytokine profiling predicts etanercept responsiveness in rheumatoid arthritis. *Clin Exp Immunol*. 2008;153:188–95.
- Blaschke S, Rinke K, Maring M, Flad T, Patschan S, Jahn O, et al. Haptoglobin- α 1, α 2, vitamin D-binding protein and apolipoprotein C-III as predictors of etanercept drug response in rheumatoid arthritis. *Arthritis Res Ther*. 2015;17:45.
- Nguyen MVC, Baillet A, Romand X, Trocmé C, Courtier A, Marotte H, et al. Prealbumin, platelet factor 4 and S100A12 combination at baseline predicts good response to TNF alpha inhibitors in rheumatoid arthritis. *Joint Bone Spine*. 2019;86:195–201.
- Lequerré T, Rottenberg P, Derambure C, Cosette P, Vittecoq O. Predictors of treatment response in rheumatoid arthritis. *Joint Bone Spine*. 2019;86:151–8.
- Obry A, Hardouin J, Lequerré T, Jarnier F, Boyer O, Fardellone P, et al. Identification of 7 Proteins in Sera of RA Patients with Potential to Predict ETA/MTX Treatment Response. *Theranostics*. 2015;5:1214–24.
- Obry A, Lequerré T, Hardouin J, Boyer O, Fardellone P, Philippe P, et al. Identification of S100A9 as biomarker of responsiveness to the methotrexate/etanercept combination in rheumatoid arthritis using a proteomic approach. *PLoS One*. 2014;9:e115800.
- Smith SL, Plant D, Eyre S, Hyrich K, Morgan AW, Wilson AG, et al. Predictive value of serum S100A9 and response to etanercept is not confirmed in a large UK rheumatoid arthritis cohort. *Rheumatology (Oxford)*. 2017;56:1019–24.
- Combe B, Rinechal N. Early lessons from the recent-onset rheumatoid arthritis cohort ESPOIR. *Joint Bone Spine*. 2015;82:13–7.
- Aletaha D, Neogi T, Silman AJ, Funovits J, Felson DT, Bingham CO III, et al. 2010 rheumatoid arthritis classification criteria: an American College of Rheumatology/European League Against Rheumatism collaborative initiative. *Arthritis Rheum*. 2010;62:2569–81.
- Archer R, Hock E, Hamilton J, Stevens J, Essat M, Poku E, et al. Assessing prognosis and prediction of treatment response in early rheumatoid arthritis: systematic reviews. *Health Technol Assess*. 2018;22:1–294.
- Gottenberg JE, Courvoisier DS, Hernandez MV, Iannone F, Lie E, Canhão H, et al. Brief Report: association of rheumatoid factor and anti-citrullinated protein antibody positivity with better effectiveness of abatacept: results from the Pan-European Registry Analysis. *Arthritis Rheumatol*. 2016;68:1346–52.
- Rigby W, Buckner JH, Louis Bridges S, Nys M Jr, Gao S, Polinsky M, et al. HLA-DRB1 risk alleles for RA are associated with differential clinical responsiveness to abatacept and adalimumab: data from a head-to-head, randomized, single-blind study in autoantibody-positive early RA. *Arthritis Res Ther*. 2021;23:245.
- Guan Y, Zhang H, Quang D, Wang Z, Parker SCJ, Pappas DA, et al. Machine learning to predict anti-tumor necrosis factor drug responses of rheumatoid arthritis patients by integrating clinical and genetic markers. *Arthritis Rheumatol*. 2019;71:1987–96.
- Tao W, Concepcion AN, Vianen M, Marijnissen ACA, Lafeber FPGJ, Radstake TRDJ, et al. Multiomics and machine learning accurately predict clinical response to adalimumab and etanercept therapy in patients with rheumatoid arthritis. *Arthritis Rheumatol*. 2021;73:212–22.

Publisher's Note

Springer Nature remains neutral with regard to jurisdictional claims in published maps and institutional affiliations.

Ready to submit your research? Choose BMC and benefit from:

- fast, convenient online submission
- thorough peer review by experienced researchers in your field
- rapid publication on acceptance
- support for research data, including large and complex data types
- gold Open Access which fosters wider collaboration and increased citations
- maximum visibility for your research: over 100M website views per year

At BMC, research is always in progress.

Learn more biomedcentral.com/submissions

