



**HAL**  
open science

## **Multicuspid tooth morphology in a gigantic Palaeocene pycnodont fish: evolutionary and palaeoecological significance**

Romain Vullo, Nathalie Bardet, Emmanuel Gheerbrant, Nour-Eddine Eddine Jalil

### ► **To cite this version:**

Romain Vullo, Nathalie Bardet, Emmanuel Gheerbrant, Nour-Eddine Eddine Jalil. Multicuspid tooth morphology in a gigantic Palaeocene pycnodont fish: evolutionary and palaeoecological significance. *Geological Magazine*, 2019, 156, pp.1618 - 1622. <10.1017/s0016756819000736>. <hal-03916865>

**HAL Id: hal-03916865**

**<https://hal.science/hal-03916865v1>**

Submitted on 13 Jan 2023

**HAL** is a multi-disciplinary open access archive for the deposit and dissemination of scientific research documents, whether they are published or not. The documents may come from teaching and research institutions in France or abroad, or from public or private research centers.

L'archive ouverte pluridisciplinaire **HAL**, est destinée au dépôt et à la diffusion de documents scientifiques de niveau recherche, publiés ou non, émanant des établissements d'enseignement et de recherche français ou étrangers, des laboratoires publics ou privés.



HAL Authorization

# **Multicuspid tooth morphology in a gigantic Paleocene pycnodont fish: Evolutionary and palaeoecological significance**

Romain Vullo<sup>1</sup>, Nathalie Bardet<sup>2</sup>, Emmanuel Gheerbrant<sup>2</sup>, Nour-Eddine Jalil<sup>2,3</sup>

<sup>1</sup>Univ Rennes, CNRS, Géosciences Rennes, UMR 6118, 35000 Rennes, France; <sup>2</sup>CR2P, UMR 7207, MNHN–CNRS–Sorbonne Université, Muséum National d’Histoire Naturelle, CP38, 75005 Paris, France; <sup>3</sup>BioDEcos, Department of Biology, FSSM–UCAM, BP2390, Marrakech, Morocco

Author for correspondence:

R. Vullo, Email: romain.vullo@univ-rennes1.fr

## **Abstract**

A pycnodont premaxilla bearing a large incisiform tooth with an unusual crown morphology is described from the Paleocene (Thanetian) phosphate deposits of Morocco. This peculiar tooth shows a broad, fan-shaped crown with nine cusps, well adapted for benthic macroalgal scraping. This morph, assigned to a new species of *Pycnodus* (*P. multicuspidatus* sp. nov.), emphasizes the phenotypic plasticity of the group and documents an additional trophic specialization among Paleogene pycnodontiform fishes. In the post-K/Pg boundary marine ecosystem of the Ouled Abdoun Basin, *P. multicuspidatus* sp. nov. may have opportunistically replaced Maastrichtian fish taxa with a similar front dentition and feeding behaviour, such as the putative specialized pycnodontiforms *Stephanodus* and *Hadrodus*.

## **Keywords:**

## 1. Introduction

Multicuspid teeth are known in various, distantly related groups of both extinct and living fishes and are generally indicative of algivorous/herbivorous diets (e.g., Gibson, 2015; Davis *et al.* 2016). Despite a rich fossil record and a high ecomorphological diversity, no true multicuspid teeth have been clearly reported among pycnodont fishes, a widespread group known from the Upper Triassic to the Eocene. The anterior dentition of pycnodonts consists of monocuspid or slightly bifid prehensile teeth, very flattened and fully incisiform in derived taxa (Nursall, 1996; Poyato-Ariza & Wenz, 2002; Kriwet, 2005; Poyato-Ariza, 2005; Poyato-Ariza & Martín-Abad, 2013). Nevertheless, Kriwet (2005: fig. 42e) figured dentary teeth of *Nursallia* with slightly incised crowns. In addition, the possible pycnodontiform genera *Stephanodus* and *Hadrodus* have large, broad incisiform teeth with, respectively, a denticulated occlusal edge (e.g., Zittel, 1888: fig. 310; Cappetta, 1972: pl. 13, figs 1–3) and a bicuspid crown (e.g., Leidy, 1873: pl. 19, figs. 17–20; Bell, 1986: fig. 2.4-6).

The well-known Late Cretaceous (Maastrichtian) and Paleogene (Danian–Ypresian) phosphate deposits of the Ouled Abdoun Basin (Morocco) have yielded abundant and diverse vertebrate remains, including many marine fish taxa (Arambourg, 1952; Bardet *et al.* 2017). Among them, pycnodont fishes are well represented, with *Phacodus* and *Eoserrasalmimus* in the Maastrichtian, and *Pycnodus* and *Serrasalmimus* in the Paleogene (Arambourg, 1952; Kriwet, 2005; Vullo *et al.* 2017). In addition, the enigmatic genera *Stephanodus* and *Hadrodus* are two other possible pycnodontiforms present in the Maastrichtian beds of the Ouled Abdoun Basin (Arambourg, 1952, 1964). We describe here two large pycnodontid premaxillary teeth from the Thanetian of the Ouled Abdoun Basin. Both specimens show a

similar incisor-like morphology; however, while the tooth crown of the first specimen (tentatively referred to *Pycnodus cf. praecursor*) shows a non-incised occlusal margin, the second specimen is characterized by a multicuspid crown and is assigned to a new species (*Pycnodus multicuspidatus* sp. nov.). These two specimens illustrate the evolutionary transition between the typical pycnodont morphotype and a new, previously undescribed adaptive form. This discovery suggests that the regulatory pathways that govern tooth shape formation and lead to multicuspid teeth in teleostean fishes may have been present in non-teleost actinopterygians such as pycnodontiforms.

## 2. Systematic palaeontology

ACTINOPTERYGII Cope, 1887

NEOPTERYGII Regan, 1923

PYCNODONTIFORMES Berg, 1937

PYCNODONTIDAE Agassiz, 1833 (sensu Nursall, 1996)

PYCNODONTINAE Agassiz, 1833 (sensu Poyato-Ariza & Wenz, 2002)

*Pycnodus cf. praecursor* Darteville & Casier, 1949

(Fig. 1a–d)

*Material.* MHNM.KHG229, a left premaxilla with one tooth preserved, housed at the Muséum d'Histoire naturelle de Marrakech (MHNM).

*Locality and horizon.* Sidi Daoui area, Ouled Abdoun Basin, Province of Khouribga, Morocco. Upper Phosphorite Bed IIa–base of the Intercalary Bed II/I interval, Thanetian (Paleocene) in age (Kocsis *et al.* 2014).

*Description.* MHNM.KHG229 is a nearly complete left premaxilla with one tooth preserved (mesial tooth). A second, lateral tooth, broken at its base, was originally present. The preserved tooth crown is wider than high (see Table 1 for measurements). It is spatulate, typically incisiform in shape, with a markedly convex and asymmetrical occlusal margin in labiolingual view. The occlusal margin is continuous, i.e. not incised. The labial face is convex and shows a dozen slight subvertical folds. The lingual face is concave and bears three wear facets. There is a high, well-developed tooth neck. The subvertical ascending premaxillary process is broken apically (dorsally). There is no fenestra, but a large mesiolingual olfactory fossa is present; this depression was forming part of the nasal capsule, together with the olfactory fossa of the mesethmoid.

*Remarks.* Features of the premaxilla (i.e., two teeth originally present, elongated and almost vertical ascending process, large olfactory fossa for the nasal capsule) combined with the typical incisiform shape of the preserved tooth clearly indicate that MHNM.KHG229 belongs to Pycnodontidae (Poyato-Ariza & Wenz, 2002; Kriwet, 2005). The well-developed olfactory fossa is similar in size, shape, and position to the pocket described in the premaxilla of *Hadrodus marshi* (Gregory, 1950: fig. 1a). By its size, MHNM.KHG229 might correspond to the premaxilla of *Pycnodus praecursor*, a large to gigantic species from the Paleocene of Africa (Angola, Niger) known only by isolated dentitions (Darteville & Casier, 1949; Cappetta, 1972). MHNM.KHG229 is therefore tentatively assigned to *Pycnodus* cf. *praecursor*. A large fragmentary prearticular dentition from Paleocene of Togo, described as *Pycnodus variabilis* var. *togoensis* (Stromer, 1910: fig. 2), might correspond to the same taxon.

*Pycnodus multicuspidatus* sp. nov.

(Fig. 1e–h)

*Holotype and only known specimen.* MHNM.KHG230, a fragmentary left premaxilla with one tooth preserved, housed at the Muséum d'Histoire naturelle de Marrakech (MHNM).

*Locality and horizon.* Sidi Daoui area, Ouled Abdoun Basin, Province of Khouribga, Morocco. Upper Phosphorite Bed IIa–base of the Intercalary Bed II/I interval, Thanetian (Paleocene) in age (Kocsis *et al.* 2014).

*Diagnosis.* Large to gigantic species of *Pycnodus* with incisiform premaxillary teeth characterized by a deeply incised, multicuspid crown showing nine triangular cusps.

*Description.* MHNM.KHG230 is a fragmentary left premaxilla with one tooth preserved (mesial tooth). The lateral part (originally bearing a second, lateral tooth) of the bone is broken and worn. The labiolingually compressed, spatulate tooth crown is wider than high (see Table 1 for measurements). The crown is multicuspid, with seven well-defined cusps and a pair of poorly-defined lateral cuspules. The cusps are triangular in shape and equally developed, albeit slightly decreasing in size laterally. The cuspidate occlusal margin is markedly convex in labiolingual view. There is a well-developed, lingually inflated tooth neck. The mesiolingual olfactory fossa can be discerned along the poorly preserved ascending premaxillary process. There is no fenestra.

*Remarks.* With the exception of the well-preserved tooth, MHNM.KHG230 is less complete and more abraded than MHNM.KHG229; although MHNM.KHG230 clearly differs from MHNM.KHG229 by the polycuspidation of teeth, both specimens are similar in size and gross morphology (Fig. 1, Table 1), indicating that they belong to distinct but closely related species.

### 3. Discussion

#### 3.a. Tooth shape development and evolution

Several studies have argued that only simple genetic changes were required for the rise of multicuspid teeth in the evolution of fishes (Streelman *et al.* 2003; Streelman & Albertson, 2006; Jackman *et al.* 2013). In their study on living African cichlids, Albertson *et al.* (2003a) found that interspecific differences in cusp number are determined by approximately one gene, suggesting that this character has the potential to respond to selection extremely quickly. A similar simple genetic basis of evolutionary novelty in the front dentition of pycnodontids can be assumed here, as suggested by the overall resemblance between specimens MHNM.KHG229 and MHNM.KHG230 as well as by the co-occurrence of the ancestral (MHNM.KHG229) and derived (MHNM.KHG230) morphotypes in the Thanetian strata of the Ouled Abdoun Basin. The peculiar tooth morphotype MHNM.KHG230 appears to be directly derived from the plesiomorphic monocuspid tooth morphotype MHNM.KHG229, and this may represent a case of punctuated equilibrium, with speciation between *Pycnodus cf. praecursor* and *Pycnodus multicuspidatus* sp. nov. by “budding cladogenesis” (Wagner, 2000).

Whether multicuspid teeth have arisen during fish evolution either by concrescence, or by differentiation of tooth germs, is still debated (Trapani *et al.* 2005; Jernvall & Thesleff, 2012; Jackman *et al.* 2013). However, this mainly concerns teleost taxa with numerous minute, closely-spaced teeth (Trapani *et al.* 2005; Jackman *et al.* 2013). In the fossil record, the oldest evidence of similar increase in cusp number (from mono- or bicuspid to

multicuspid small incisiform teeth) is known between two Late Triassic non-teleostean neopterygians, i.e. the dapediids *Sargodon* (Tintori, 1983, 1998) and *Hemicalypterus* (Gibson, 2015, 2016).

In pycnodontiform fishes, the number of premaxillary and dentary teeth never exceeds three and five, respectively (Poyato-Ariza & Wenz, 2002). In *Pycnodus* and other derived pycnodontids, these bones bear two monocuspid incisiform teeth (Nursall, 1996; Poyato-Ariza & Wenz, 2002), except *Polazzodus*, *Sylvienodus*, and *Tergestia*, which have a premaxilla bearing a single tooth (Capasso, 2000; Poyato-Ariza, 2010, 2013). Therefore, it is obvious that the nine-cusped tooth of *Pycnodus multicuspidatus* sp. nov. described here arose from complex folding of a single tooth germ (Differentiation Theory) rather than from early fusion of several tooth germs (Concrescence Theory). This interpretation is clearly supported by the equally-sized premaxillary tooth MHNM.KHG229, which shows a similar overall morphology and differs only by its simple, non-incised crown contour (ancestral condition).

During the development of mammalian teeth, the folding of the enamel epithelium leading to the formation of multicuspid crowns is regulated by signaling centers called secondary enamel knots (Jernvall *et al.* 1994; Vaatokari *et al.* 1996). The presence of enamel knot-like signaling centers controlling the cusp number in teleostean fishes has been suggested by several authors (Streelman *et al.* 2003; Jernvall & Thesleff, 2012; Fraser *et al.* 2008, 2013; Atukorala & Franz-Odenaal, 2014; Debais-Thibaud *et al.* 2015). Recently, Smith *et al.* (2015) showed that the development genes *shh* and *bmp4* operating in the dentition of teleosts are similarly expressed in the dentition of the basal actinopterygian *Polyodon*, thus extending this conserved developmental pattern within the Actinopterygii. Therefore, the evolutionary transition observed between the monocuspid pycnodont tooth MHNM.KHG229 and the multicuspid pycnodont tooth MHNM.KHG230 may be explained by minor genetic changes leading to the formation of secondary enamel knot-like structures in

the derived form, as for the difference in cusp number observed today between the adult teeth of two closely related species of cichlid fishes, i.e. *Metriaclima zebra* and *Labeotropheus fuelleborni* (Albertson *et al.* 2003a,b; Streelman *et al.* 2003). The symmetrical formation of four lateral cusps on each side of the central cusp of MHNM.KHG230 could be compared with that of the tricuspid teeth of *Labeotropheus fuelleborni*, which is due to the uniform development of secondary enamel knots (and thus lateral cusps) on both the mesial and distal sides of the central cusp (Streelman *et al.* 2003).

### **3.b. Feeding habits and palaeoecological implications**

The large size of MHNM.KHG230 contrasts with the diminutive size characterizing the multicuspid teeth of many modern fish taxa (Jernvall & Thesleff, 2012). However, the dental morphology observed in MHNM.KHG230 is strikingly similar to that observed in modern algivorous/herbivorous forms, such the characids *Hemigrammus*, *Hyphessobrycon* and *Phycocharax* (Lima *et al.* 2009; Ohara *et al.* 2017a,b), the acanthurid *Acanthurus nigrofuscus* (Fishelson & Delarea, 2013), the sparid *Crenidens* (Fishelson *et al.* 2014), the terapontid *Helotes* (Davis *et al.* 2016) and the cichlid *Labeotropheus* (Fraser *et al.* 2008). Interestingly, a similar tooth morphology is also found in various groups of herbivorous reptiles, such as pareiasaurs (e.g., Jalil and Janvier, 2005; Tsuji, 2013), ankylosaurian dinosaurs (Ősi *et al.* 2017), the extinct crocodyliform *Simosuchus* (Kley *et al.* 2010), and the algae-eating Galápagos marine iguana *Amblyrhynchus* (Melstrom, 2017). Among mammals, similar fan-shaped multicuspid incisors are present in an extinct macroscelidid tentatively referred to *Miorhynchocyon garipeensis* (Senut, 2003) and in some hyracoids (De Blieux & Simons, 2002).

Although the vomerine and prearticular dentitions of *Pycnodus multicuspidatus* sp. nov. still remain unknown and may have had a crushing function, all these morphological similarities clearly indicate that at least one pycnodontine species have evolved an anterior dentition well suited for benthic macroalgal scraping. *Pycnodus multicuspidatus* sp. nov. was likely able to feed on the heavily calcified macroalga *Halimeda*, a chlorophyte abounding in the shallow marine ramp facies of the Paleogene formations of the central High Atlas (Dragastan & Herbig, 2007).

The multicuspid incisiform teeth of *Pycnodus multicuspidatus* sp. nov. are rather similar to those of the front dentition of *Stephanodus splendens* and *Hadrodus belinkoi*, two putative pycnodontiform taxa occurring in the underlying Maastrichtian strata of the Ouled Abdoun Basin (Arambourg, 1952, 1964). However, the incisiform teeth of *Stephanodus* and *Hadrodus* can be easily distinguished from those of *Pycnodus multicuspidatus* sp. nov. The incisiform teeth of *Stephanodus* have a lower crown with a rectilinear or slightly concave occlusal margin showing numerous (up to 14), smaller cuspules (Zittel, 1888: fig. 310; White, 1934: pl. 10, fig. 11; Cappetta, 1972: pl. 13, fig. 1–3). The incisiform teeth of *Hadrodus* are usually bifid, with a crown showing two well-separated and well-developed cusps sometimes flanked by one or two additional cuspules in dentary teeth (Arambourg, 1964; Bell, 1986). As suggested by the heterodonty observed between premaxillary and dentary teeth of *Hadrodus hewletti* (Bell, 1986: fig. 2.4–6), teeth of *Hadrodus belinkoi* and *Stephanodus splendens* may correspond, respectively, to premaxillary and dentary teeth of the same species (with large hook-shaped branchial teeth originally described under the name *Ancistrodon libycus*; Dames, 1883; Arambourg, 1952). A complete systematic revision of this group of putative pycnodonts is clearly needed but is beyond the scope of this paper; therefore, pending further investigation, *Hadrodus belinkoi* and *Stephanodus splendens* are considered here as two distinct taxa.

In the Paleocene epicontinental seas of Morocco, *Pycnodus multicuspidatus* sp. nov. may have occupied, by opportunistic replacement, the trophic niche filled by *Stephanodus* and *Hadrodus* before the K/Pg boundary and vacated by the end-Cretaceous extinction of these two taxa (Fig. 2). This case of parallelism emphasizes the high morphological plasticity of pycnodont fishes and their ability to adapt to sudden palaeoenvironmental and palaeoecological changes (Poyato-Ariza, 2005). Pycnodont fishes appear to have been trophically diverse in the Ouled Abdoun Basin ecosystem during the Paleogene, with generalist, shell-crushing forms (*Pycnodus* spp., including *P. cf. praecursor*), a macroalgal scraper (*Pycnodus multicuspidatus* sp. nov.), and a predatory, flesh-eating form (*Serrasalmimus secans*).

**Acknowledgements.** We would like to thank Patrick Catto for kindly donating the holotype of the new species described in this paper, and Damien Gendry for his help with the photographs of the specimens.

## References

- Agassiz L** (1833) Tableau synoptique des familles, des genres et des espèces de l'ordre des Ganoïdes. In *Recherches sur les Poissons Fossiles*. 1<sup>st</sup> "Livraison", Vol. 2, Part I. Neuchâtel: Petitpierre. pp. 1–48.
- Albertson RC, Streelman, JT and Kocher TD** (2003a) Genetic basis of adaptive shape differences in the cichlid head. *Journal of Heredity* **94**, 291–301.

- Albertson RC, Streebman JT and Kocher TD** (2003b) Directional selection has shaped the oral jaws of Lake Malawi cichlid fishes. *Proceeding of the National Academy of Sciences of the USA* **100**, 5252–7.
- Arambourg C** (1952) Les vertébrés fossiles des gisements de phosphates (Maroc – Algérie – Tunisie). *Service Géologique du Maroc, Notes et Mémoires* **92**, 1–372.
- Arambourg C** (1964) Sur la présence d'un poisson du genre *Hadrodus* dans les phosphates maestrichtiens du Maroc : *H. belinkoi* nov. sp. *Comptes Rendus sommaires de la Société Géologique de France* **1964(8)**, 318–9.
- Atukorala ADS and Franz-Odenaal TM** (2014) Spatial and temporal events in tooth development of *Astyanax mexicanus*. *Mechanisms of Development* **134**, 42–54.
- Bardet N, Gheerbrant E, Noubhani A, Cappetta H, Jouve S, Bourdon E, Pereda Suberbiola X, Jalil N-E, Vincent P, Houssaye A, Solé F, Elhoussaini Darif K, Adnet S, Rage J-C, Lapparent de Broin F de, Sudre J, Bouya B, Amaghazaz M and Meslouh S** (2017) Les vertébrés des phosphates crétacés–paléogènes (72,1–47,8 Ma) du Maroc. *Mémoires de la Société Géologique de France* **180**, 351–452.
- Bell GL** (1986) A pycnodont fish from the Upper Cretaceous of Alabama. *Journal of Paleontology* **60**, 1120–6.
- Berg LS** (1937) A classification of fish-like vertebrates. *Bulletin de l'Académie des Sciences de l'URSS, Classe des Sciences mathématiques et naturelles (série biologique)* **4**, 1277–80.
- Capasso L** (2000) *Tergestia sorbinii* gen. nov., sp. nov., del Paleocene inferior di Trebiciano, Trieste (Pisces, Pycnodontiformes). *Atti del Museo Civico di Storia Naturale di Trieste* **48**, 261–89.
- Cappetta H** (1972) Les poissons crétacés et tertiaires du Bassin des Iullemeden (République du Niger). *Palaeovertebrata* **5**, 179–251.

- Cope ED** (1887) Zittel's Manual of Palaeontology. *American Naturalist* **21**, 1014–9.
- Dames W** (1883) Ueber *Ancistrodon* Debey. *Deutschen geologischen Gesellschaft* **4**, 655–70.
- Dartevelle E and Casier E** (1949) Les poissons fossiles du Bas-Congo et des régions voisines (deuxième partie). *Annales du Musée du Congo Belge A, série 3* **2**, 201–56.
- Davis AM, Unmack PJ, Vari RP and Betancur-R R** (2016) Herbivory promotes dental disparification and macroevolutionary dynamics in grunters (Teleostei: Terapontidae), a freshwater adaptive radiation. *The American Naturalist* **187**, 320–33.
- Debiais-Thibaud M, Chiori R, Enault, S, Oulion S, Germon I, Martinand-Mari C, Casane D and Borday-Birraux V** (2015) Tooth and scale morphogenesis in shark: an alternative process to the mammalian enamel knot system. *BMC Evolutionary Biology* **15**, 292.
- De Blieux DD and Simons EL** (2002) Cranial and dental anatomy of *Antilohyrax pectidens*: A Late Eocene hyracoid (Mammalia) from the Fayum, Egypt. *Journal of Vertebrate Paleontology* **22**, 122–36.
- Dragastan ON and Herbig H-G** (2007) *Halimeda* (green siphonous algae) from the Paleogene of Morocco – Taxonomy, phylogeny and paleoenvironment. *Micropaleontology* **53**, 1–72.
- Fishelson L and Delarea Y** (2013) Comparison of the oral cavity architecture in surgeonfishes (Acanthuridae, Teleostei), with emphasis on the taste buds and jaw “retention plates”. *Environmental Biology of Fishes* **97**, 173–85.
- Fishelson L, Golani D and Diamant A** (2014) SEM study of the oral cavity of members of the Kyphosidae and Girellidae (Pisces, Teleostei), with remarks on *Crenidens* (Sparidae), focusing on teeth and taste bud numbers and distribution. *Zoology* **117**, 122–30.

- Fraser GJ, Bloomquist RF and Strelman JT** (2008) A periodic pattern generator for dental diversity. *BMC Biology* **6**, 32.
- Fraser GJ, Bloomquist RF and Strelman JT** (2013) Common developmental pathways link tooth shape to regeneration. *Developmental Biology* **377**, 399–414.
- Gibson SZ** (2015) Evidence of a specialized feeding niche in a Late Triassic ray-finned fish: evolution of multidenticate teeth and benthic scraping in †*Hemicalypterus*. *Science of Nature* **102**, 10.
- Gibson SZ** (2016) Redescription and phylogenetic placement of †*Hemicalypterus weiri* Schaeffer, 1967 (Actinopterygii, Neopterygii) from the Triassic Chinle Formation, southwestern United States: new insights into morphology, ecological niche, and phylogeny. *PLoS ONE* **11(9)**, e0163657.
- Gregory JT** (1950) A large pycnodont from the Niobrara Chalk. *Postilla* **5**, 1–10.
- Jackman WR, Davies, SH, Lyons, DB, Stauder CK, Denton-Schneider BR, Jowdry A, Aigler SR, Vogel SA and Stock DW** (2013) Manipulation of Fgf and Bmp signaling in teleost fishes suggests potential pathways for the evolutionary origin of multicuspid teeth. *Evolution & Development* **15**, 107–18.
- Jalil N-E and Janvier P** (2005) Les pareiasaures (Amniota, Parareptilia) du Permien supérieur du Bassin d'Argana, Maroc. *Geodiversitas* **27**, 35–132.
- Jernvall J and Thesleff I** (2012) Tooth shape formation and tooth renewal: evolving with the same signals. *Development* **139**, 3487–97.
- Jernvall J, Kettunen P, Karavanova I, Martin LB and Thesleff I** (1994) Evidence for the role of the enamel knot as a control center in mammalian tooth cusp formation: non-dividing cells express growth stimulating Fgf-4 gene. *International Journal of Developmental Biology* **38**, 463–9.

- Kley NJ, Sertich JJW, Turner AH, Krause DW, O'Connor PM and Georgi JA** (2010) Craniofacial morphology of *Simosuchus clarki* (Crocodyliformes: Notosuchia) from the Late Cretaceous of Madagascar. *Society of Vertebrate Paleontology Memoir* **10**, *Journal of Vertebrate Paleontology* **30** (supplement to number 6), 13–98.
- Kocsis L, Gheerbrant E, Mouflih M, Cappetta H, Yans J and Amaghazaz M** (2014) Comprehensive stable isotope investigation of marine biogenic apatite from the late Cretaceous–early Eocene phosphate series of Morocco. *Palaeogeography, Palaeoclimatology, Palaeoecology* **394**, 74–88.
- Kriwet J** (2005) A comprehensive study of the skull and dentition of pycnodont fishes. *Zitteliana A* **45**, 135–88.
- Leidy, J.** (1873) Contributions to the extinct vertebrate fauna of the Western Territories. *Report of the United States Geological Survey of the Territories* **1 (Part 1)**, 14–358.
- Lima FCT, Wosiacki WB and Ramos CS** (2009) *Hemigrammus arua*, a new species of characid (Characiformes: Characidae) from the lower Amazon, Brazil. *Neotropical Ichthyology* **7**, 153–60.
- Melstrom KM** (2017) The relationship between diet and tooth complexity in living dentigerous saurian. *Journal of Morphology* **278**, 500–22.
- Nursall JR** (1996) The phylogeny of pycnodont fishes. In *Mesozoic Fishes – Systematics and Paleocology* (eds G Arratia and G. Viohl), pp. 125–52. München: Verlag Dr. Friedrich Pfeil.
- Ohara WM, Abrahão VP and Espíndola VC** (2017a) *Hyphessobrycon platyodus* (Teleostei: Characiformes), a new species from the Rio Madeira basin, Brazil, with comments on how multicuspid teeth relate to feeding habits in Characidae. *Journal of Fish Biology* **91**, 835–50.

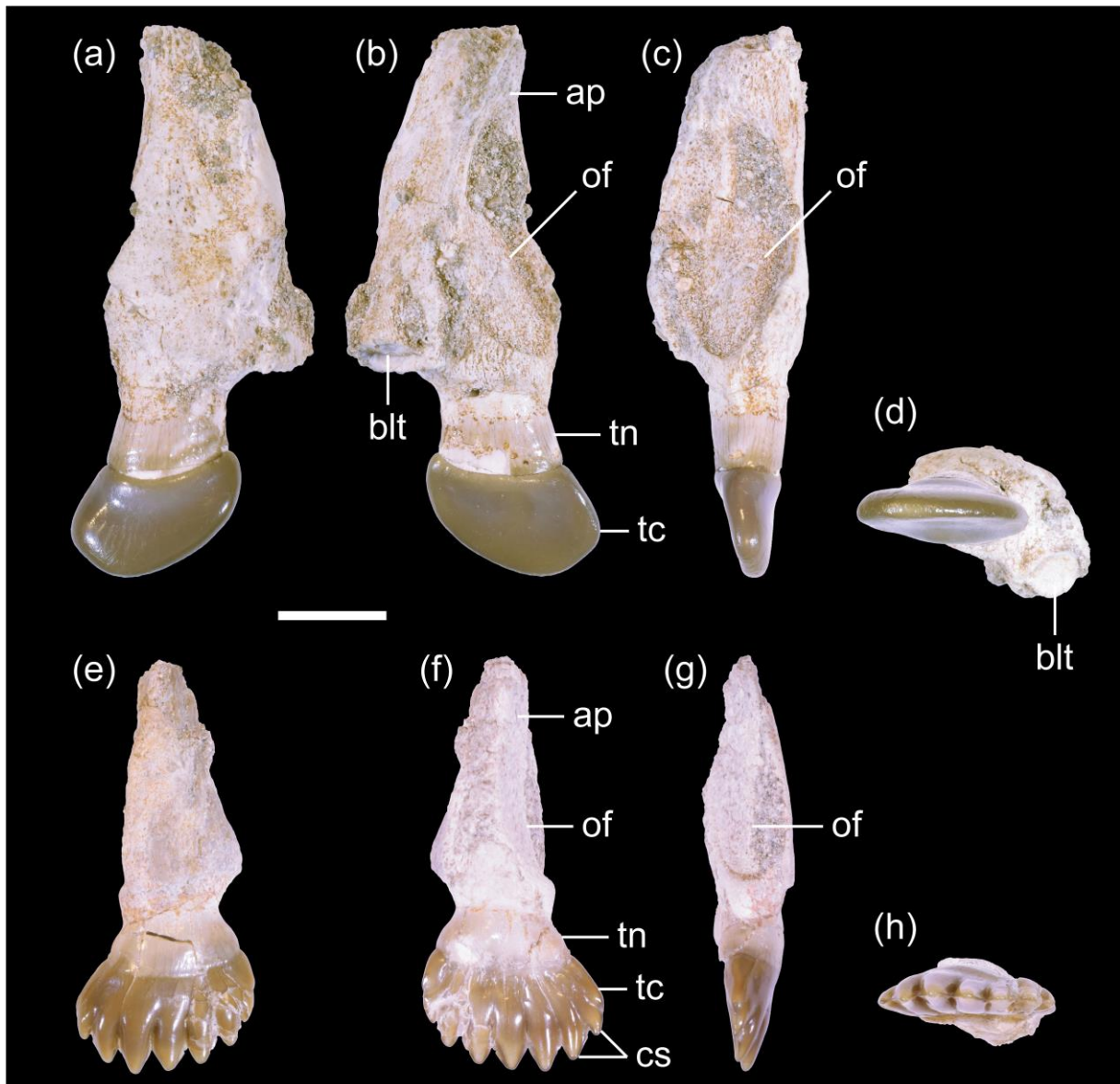
- Ohara WM, Mirande JM and Lima FCT** (2017b) *Phycocharax rasbora*, a new genus and species of Brazilian tetra (Characiformes: Characidae) from Serra do Cachimbo, rio Tapajós basin. *PLoS ONE* **12**(2), e0170648.
- Ósi A, Prondvai E, Mallon J and Bodor ER** (2017) Diversity and convergences in the evolution of feeding adaptations in ankylosaurs (Dinosauria: Ornithischia). *Historical Biology* **29**, 539–70.
- Poyato-Ariza FJ** (2005) Pycnodont fishes: morphologic variation, ecomorphologic plasticity and a new interpretation of their evolutionary history. *Bulletin of the Kitakyushu Museum of Natural History and Human History A* **3**, 169–84.
- Poyato-Ariza FJ** (2010) *Polazzodus*, gen. nov., a new pycnodont fish from the Late Cretaceous of northeastern Italy. *Journal of Vertebrate Paleontology* **30**, 650–64.
- Poyato-Ariza FJ** (2013) *Sylvienodus*, a new replacement genus from the Cretaceous pycnodontiform fish “*Pycnodus*” *laveirensis*. *Comptes Rendus Palevol* **12**, 91–100.
- Poyato-Ariza FJ and Wenz S** (2002) A new insight into pycnodontiform fishes. *Geodiversitas* **24**, 139–248.
- Poyato-Ariza FJ and Martín-Abad H** (2013) History of two lineages: Comparative analysis of the fossil record in Amiiformes and Pycnodontiformes (Osteichthyes, Actinopterygii). *Spanish Journal of Palaeontology* **28**, 79–90.
- Regan CT** (1923) The skeleton of *Lepidosteus*, with remarks on the origin and evolution of the lower neopterygian fishes. *Proceedings of the Zoological Society of London* **1923**, 445–61.
- Senut B** (2003) The Macroscelididae from the Miocene of the Orange River, Namibia. *Memoir of the Geological Survey of Namibia* **19**, 119–41.
- Smith MM, Johanson Z, Butts T, Ericsson R, Modrell M, Tulenko FJ, Davis MC and Fraser GJ** (2015) Making teeth to order: conserved genes reveal an ancient molecular

- pattern in paddlefish (Actinopterygii). *Proceedings of the Royal Society B* **282**, 20142700.
- Streelman JT and Albertson RC** (2006) Evolution of novelty in the cichlid dentition. *Journal of Experimental Zoology (Mol Dev Evol)* **306B**, 216–26.
- Streelman JT, Webb JF, Albertson RC and Kocher TD** (2003) The cusp of evolution and development: a model of cichlid tooth shape diversity. *Evolution & Development* **5**, 600–8.
- Stromer E** (1910) Reptilien- und Fischreste aus dem marinen Alttertiär von Südtoغو (Westafrika). *Monatsberichte der Deutschen Geologischen Gesellschaft* **62**, 478–507.
- Tintori A** (1983) Hypsisomatic Semionotidae (Pisces, Actinopterygii) from the Upper Triassic of Lombardy (N. Italy). *Rivista Italiana de Paleontologia e Stratigrafia* **88**, 417–42.
- Tintori A** (1998) Fish biodiversity in the marine Norian (Late Triassic) of northern Italy: The first neopterygian radiation. *Italian Journal of Zoology* **65 (Supplement 1)**, 193–8.
- Trapani J, Yamamoto Y and Stock DW** (2005) Ontogenetic transition from unicuspid to multicuspid oral dentition in a teleost fish: *Astyanax mexicanus*, the Mexican tetra (Ostariophysi: Characidae). *Zoological Journal of the Linnean Society* **145**, 523–38.
- Tsuji LA** (2013) Anatomy, cranial ontogeny and phylogenetic relationships of the pareiasaur *Deltavjatia rossicus* from the Late Permian of central Russia. *Earth and Environmental Science Transactions of the Royal Society of Edinburgh* **104**, 1–42.
- Vaatokari A, Åberg T, Jernvall J, Keränen S and Thesleff I** (1996) The enamel knot as a signaling center in the developing mouse tooth. *Mechanisms of Development* **54**, 39–43.
- Vullo R, Cavin L, Khalloufi B, Amaghaz M, Bardet N, Jalil N-E, Jourani E, Khaldoune F and Gheerbrant E** (2017) A unique Cretaceous–Paleogene lineage of piranha-jawed pycnodont fishes. *Scientific Reports* **7**, 6802.

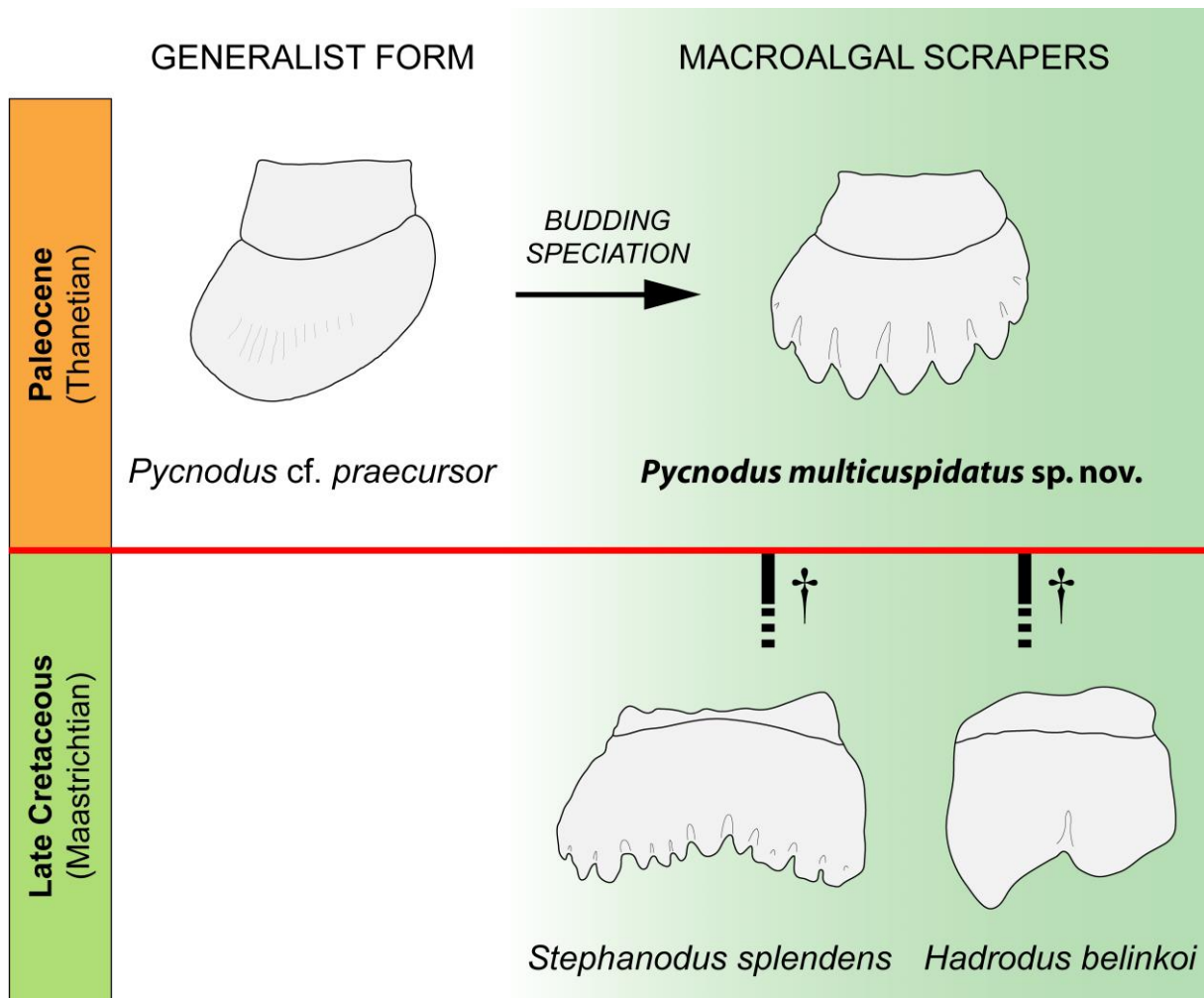
- Wagner PJ** (2000) The quality of the fossil record and the accuracy of phylogenetic inferences about sampling and diversity. *Systematic Biology* **49**, 65–86.
- White EI** (1934) Fossil fishes of Sokoto Province. *Geological Survey of Nigeria* **14**, 1–78.
- Zittel KA** (1888) *Handbuch der Paläontologie. I Abtheilung. Paläozoologie. III Band. Vertebrata (Pisces, Amphibia, Reptilia, Aves)*. Second instalment. München und Leipzig: Druck und Verlag von R Oldenbourg. pp. 257–436.

**Table 1.** Measurements (in mm) of specimens MHNM.KHG229 and MHNM.KHG230.

	MHNM.KHG229, left	MHNM.KHG230, left
	premaxilla of <i>Pycnodus</i> cf. <i>praecursor</i>	premaxilla of <i>Pycnodus</i> <i>multicuspidatus</i> sp. nov.
Total height (as preserved)	50.9	38.1
Tooth width	15.7	16.6
Tooth height (crown, without tooth neck)	10.4	10.1
Tooth height (including tooth neck)	17.8	14.6
Tooth thickness	6.3	6.2



**Fig. 1.** Left premaxillae of *Pycnodus* cf. *praecursor* (MHNM.KHG229) (a–d) and *P. multicuspidatus* sp. nov. (holotype MHNM.KHG230) (e–h) from the Paleocene of the Ouled Abdoun Basin, Morocco, in labial (a, e), lingual (b, f), mesial (c, g), and ventral (occlusal) (d, h) views. Abbreviations: ap – ascending process; blt – base of the (missing) lateral tooth; cs – cusps; of – olfactory fossa; tc – tooth crown; tn – tooth neck. Scale bar: 10 mm.



**Fig. 2.** End-Cretaceous extinction of the macroalgal scrapers *Stephanodus* and *Hadrodus* (?Pycnodontiformes) followed by opportunistic refilling of vacated ecospace by the Paleocene pycnodontid *Pycnodus multicuspidatus* sp. nov.