



**HAL**  
open science

## Photopharmacological manipulation of amygdala metabotropic glutamate receptor mGlu4 alleviates neuropathic pain

Vanessa Pereira, Juri Aparicio Arias, Amadeu Llebaria, Cyril Goudet

### ► To cite this version:

Vanessa Pereira, Juri Aparicio Arias, Amadeu Llebaria, Cyril Goudet. Photopharmacological manipulation of amygdala metabotropic glutamate receptor mGlu4 alleviates neuropathic pain. *Pharmacological Research*, 2023, 187, pp.106602. 10.1016/j.phrs.2022.106602 . hal-03914258

**HAL Id: hal-03914258**

**<https://hal.science/hal-03914258>**

Submitted on 4 Jan 2023

**HAL** is a multi-disciplinary open access archive for the deposit and dissemination of scientific research documents, whether they are published or not. The documents may come from teaching and research institutions in France or abroad, or from public or private research centers.

L'archive ouverte pluridisciplinaire **HAL**, est destinée au dépôt et à la diffusion de documents scientifiques de niveau recherche, publiés ou non, émanant des établissements d'enseignement et de recherche français ou étrangers, des laboratoires publics ou privés.



# Photopharmacological manipulation of amygdala metabotropic glutamate receptor mGlu4 alleviates neuropathic pain

Vanessa Pereira<sup>a</sup>, Juri Aparicio Arias<sup>a</sup>, Amadeu Llebaria<sup>b</sup>, Cyril Goudet<sup>a,\*</sup>,<sup>1</sup>

<sup>a</sup> JGF, Univ. Montpellier, CNRS, INSERM, Montpellier, France

<sup>b</sup> MCS, Laboratory of Medicinal Chemistry & Synthesis, Department of Biological Chemistry, Institute for Advanced Chemistry of Catalonia (IQAC-CSIC), Barcelona, Spain

## ARTICLE INFO

### Keywords:

Pain  
Amygdala  
GPCR  
Photopharmacology  
Metabotropic glutamate receptors

## ABSTRACT

Neuropathic pain is a common health problem resulting in exacerbated response to noxious and non noxious stimuli, as well as impaired emotional and cognitive responses. Unfortunately, neuropathic pain is also one of the most difficult pain syndromes to manage, highlighting the importance of better understanding the brain regions and neuromodulatory mechanisms involved in its regulation. Among the many interconnected brain areas which process pain, the amygdala is known to play an important role in the integration of sensory and emotional pain signals. Here we questioned the ability of a recently identified neuromodulatory mechanism associated with the metabotropic glutamate receptors mGlu<sub>4</sub> in the amygdala to modulate neuropathic pain. In a murine model of peripheral mononeuropathy, we demonstrate that pharmacological activation of amygdala mGlu<sub>4</sub> efficiently alleviates sensory and depressive-like symptoms in both male and female mice. Moreover, we reveal a differential modulation of these symptoms. Activating mGlu<sub>4</sub> in the contralateral amygdala relative to the side of the mononeuropathy, is necessary and sufficient to relieve both sensory and depressive-like symptoms, while ipsilateral activation solely reduces depressive-like symptoms. Furthermore, using photopharmacology, a recent strategy allowing precise photocontrol of endogenous proteins, we further demonstrate the dynamic alleviation of neuropathic pain through light-dependent facilitation of mGlu<sub>4</sub> by a photoswitchable positive allosteric modulator. Finally, coupling photopharmacology and analgesic conditioned place preference, we show a significant pain-reducing effect of mGlu<sub>4</sub> activation. Taken together, these data highlight the analgesic potential of enhancing amygdala mGlu<sub>4</sub> activity to counteract neuropathy reinforcing its therapeutic interest for the treatment of pathological pain.

## 1. Introduction

Neuropathic pain is caused by a lesion or disease of the somatosensory nervous system. It is a common and complex health problem, which greatly impairs the quality of life of 7–10% of the population worldwide [9,38]. Unfortunately, neuropathic pain is one of the most difficult pain syndromes to manage [2]. Indeed, the most commonly prescribed treatments for neuropathic pain (anticonvulsants, antidepressants) have moderate efficacy at best and are associated with side effects that limit their use. This underlines the importance of understanding the brain circuits and neuromodulatory mechanisms of pain in order to improve treatment options.

The processing of pain-related information behind the sensory,

cognitive and emotional–affective aspects of pain is very complex and involves many interconnected brain areas [22]. Among them, the amygdala is known to be a critical region that integrates sensory and pain signals [27]. The amygdala receives pain-related information mainly from the thalamus, cortical areas and the parabrachial nucleus [26,27,30]. The amygdala is composed of multiple interconnected nuclei, comprising the basolateral (BLA) and central (CeA) nuclei and the intercalated cells (ITC), which have all been linked to pain-related functions. Within amygdala, various neuromodulatory systems are implicated in the modulation of those functions, such as opioids [28], cannabinoids [16,35], neuropeptides [28,40], as well as glutamate [20, 29,31].

Glutamate is one of the main neurotransmitters involved in the

\* Correspondence to: Institut de Genomique Fonctionnelle, Univ Montpellier, Inserm, CNRS, 141 rue de la Cardonille, 34094 Montpellier cedex 5, France.

E-mail address: [cyril.goudet@igf.cnrs.fr](mailto:cyril.goudet@igf.cnrs.fr) (C. Goudet).

<sup>1</sup> ORCID: 0000-0002-8255-3535

transmission of pain-related information throughout the nervous system. It exerts its action via the activation of ionotropic and metabotropic receptors. Metabotropic glutamate receptors (mGlu) are G protein-coupled receptors activated by the neurotransmitter glutamate [14] and several studies have highlighted the analgesic potential of these receptors [24,31]. Recently, a subtype of the mGlu receptor family, mGlu<sub>4</sub>, has been identified in the amygdala where it acts as a neuro-modulator of sensory and anxiodepressive symptoms associated with persistent inflammatory pain [45]. These receptors are present mainly in presynaptic elements of both glutamatergic and GABAergic neurons within the lateral (LA) and basolateral amygdala (BLA), and they downregulate the transmission coming from the thalamus [45]. mGlu<sub>4</sub> receptors could make interesting analgesic targets against pathological pain because, while leaving acute pain in naïve animals unchanged, systemic or local administration of mGlu<sub>4</sub> agonists in the spinal cord or the amygdala alleviates pain in animal models of chronic pain [12,39,41,45,8]. However, the role of these receptors in chronic pain from various etiologies remains to be determined.

In the present study, we questioned the ability of amygdala mGlu<sub>4</sub> receptors to modulate neuropathic pain. To that aim, we combined classical behavioral pharmacology in a mouse preclinical model of peripheral mononeuropathy and photopharmacology, a recent strategy allowing a precise spatiotemporal control of deep brain endogenous targets by light-operated ligands [3,18].

## 2. Materials and methods

### 2.1. Animals

Experiments were performed on 8- to 12-week-old C57BL/6J male and female mice (Charles River). Animals were treated in accordance with the European Community Council Directive 2010/63/EU. Experimental protocols were approved by the regional animal welfare committee (CEEA-LR) with the guidelines of the French Agriculture and Forestry Ministry (D34-172-13). All efforts were made to minimize animal suffering and to reduce their number according to the 3R principles.

### 2.2. Stereotaxic implantation of cannulas

Prior to neuropathy induction and behavioral testing, guide cannulas for pharmacology (PlasticsOne, Roanoke, VA) or hybrid opto/fluidic cannulas for photopharmacology (DORIC lenses, Quebec, Canada) were implanted unilaterally by stereotaxic surgery on anesthetized mice. Cannulas were placed over the intermediate capsule of right or left amygdala (−1.34 mm anteroposterior (AP); ± 2.9 mm mediolateral (ML); and − 4.25 mm dorsoventral (DV)). After 1 week of recovery from the stereotaxic surgery, animals were first subjected to different behavioral tests to measure their basal locomotor activity, mechanical or thermal sensitivity and grooming behavior in order to establish a baseline. At the end of the series of behavioral experiments, brains were post-fixed to check the cannula locations.

### 2.3. Peripheral mononeuropathy induction

Induction was performed after 1 week of recovery from stereotaxic implantation and baseline measurements. We used the “Cuff model” of neuropathic pain, known to induce long-lasting sensory and anxiodepressive symptoms in mice [42]. Peripheral mononeuropathy was induced by the unilateral implantation of a cuff made of a short polyethylene tube (2 mm) around the main branch of the sciatic nerve of the right or left hind paw of anesthetized mice [43]. Sham surgeries followed the same procedure, but without implantation.

### 2.4. Behavioral experiments

Mechanical sensitivity was evaluated using the von Frey method. The mechanical force required to elicit a paw withdrawal response in 50% of animals (in grams) was determined using the simplified “up-down” Von Frey method [4]. Heat sensitivity was measured using the Hargreaves test. A radiant infrared heat stimulus was focused on the plantar surface of the hindpaws of mice to determine the time taken (in seconds) to withdraw from the heat stimulus [15]. Depressive-like behavior was assessed using the splash test [21]. The duration that mice spent pursuing grooming behavior after spraying a 10% sucrose solution on their dorsal coat was recorded manually over a total period of 5 min for classical pharmacology and 9 min for photopharmacology experiments.

These behaviors were tested on healthy mice (baseline, before surgery) and on neuropathic or sham operated mice (>14 days after the surgery, as indicated in the corresponding figures) after intra-amygdala injection of drugs or their vehicle. Locomotor activity and additional behaviors were also recorded (Supplemental Fig. 1).

### 2.5. *In vivo* photopharmacology

*In vivo* photopharmacology was applied in experiments measuring mechanical and heat allodynia, depressive-like behavior and in analgesic conditioned place preference experiments in mononeuropathic mice. Experiments were performed on mice stereotaxically implanted with hybrid opto/fluidic cannulas. Mice were connected via a catheter to a minipump and via an optical fiber to a LED source, allowing the local delivery of drugs and light in the amygdala in freely moving animals. We used a LED light source (DORIC lenses, Quebec, Canada) combining two wavelengths (UV: 385 nm; Green: 505 nm) which are independently controlled via the LED driver software (Doric Lenses, Quebec, Canada) and connected through a rotary joint to an optical fiber (fiber diameter: 200 μm, NA = 0.53). Mice were habituated to be connected daily during one week before the tests. Tests were performed after intra-amygdala injection of optogluram or vehicle. Mice received 50 ms light pulses at 10 Hz frequency and a light power of 8.0 mW for 385 nm wavelength and 2.0 mW for 505 nm wavelength. The duration of light exposure was adapted for each behavioral test. Typically, light application started 15 min following injection, when the ligand reaches its maximal effect (as determined in absence of light).

### 2.6. Analgesic conditioned place preference (aCPP)

In order to evaluate the analgesic potential of mGlu<sub>4</sub> photocontrol in absence of external stimuli, we used the aCPP paradigm [37], combined with photopharmacology. The aCPP apparatus consists in a two-chamber arena presenting different contexts (striped or dotted wall patterns), which are connected through a central open door. One chamber was defined as the “violet chamber” and the other one as the “green chamber”. The illumination is automatically controlled through a video tracking device coupled to the light source controller (EthoVision, Noldus, Wageningen, Netherlands). When the mouse is detected in the “violet chamber”, it receives a 385 nm LED illumination in the amygdala through an optic fiber. On the other hand, when the mouse is in the “green chamber”, it receives a 505 nm LED illumination in the amygdala. Following a first session of habituation to the arena in absence of treatment, mice were submitted to 10 conditioning episodes of 5 min, twice daily for 5 days. During each conditioning episode, neuropathic or sham operated mice were injected with either vehicle (PBS) or optogluram (30 μM, 500nL in PBS). Fifteen minutes after injection (when drug reached its maximal effect), mice were placed for 5 min in the arena and allowed to move freely. Mice were first placed alternatively in one or the other chamber. The 6th day, the animals were placed in the center of the arena, receiving no drug or light treatment, and their real-time place preference was measured during 5 min through a video

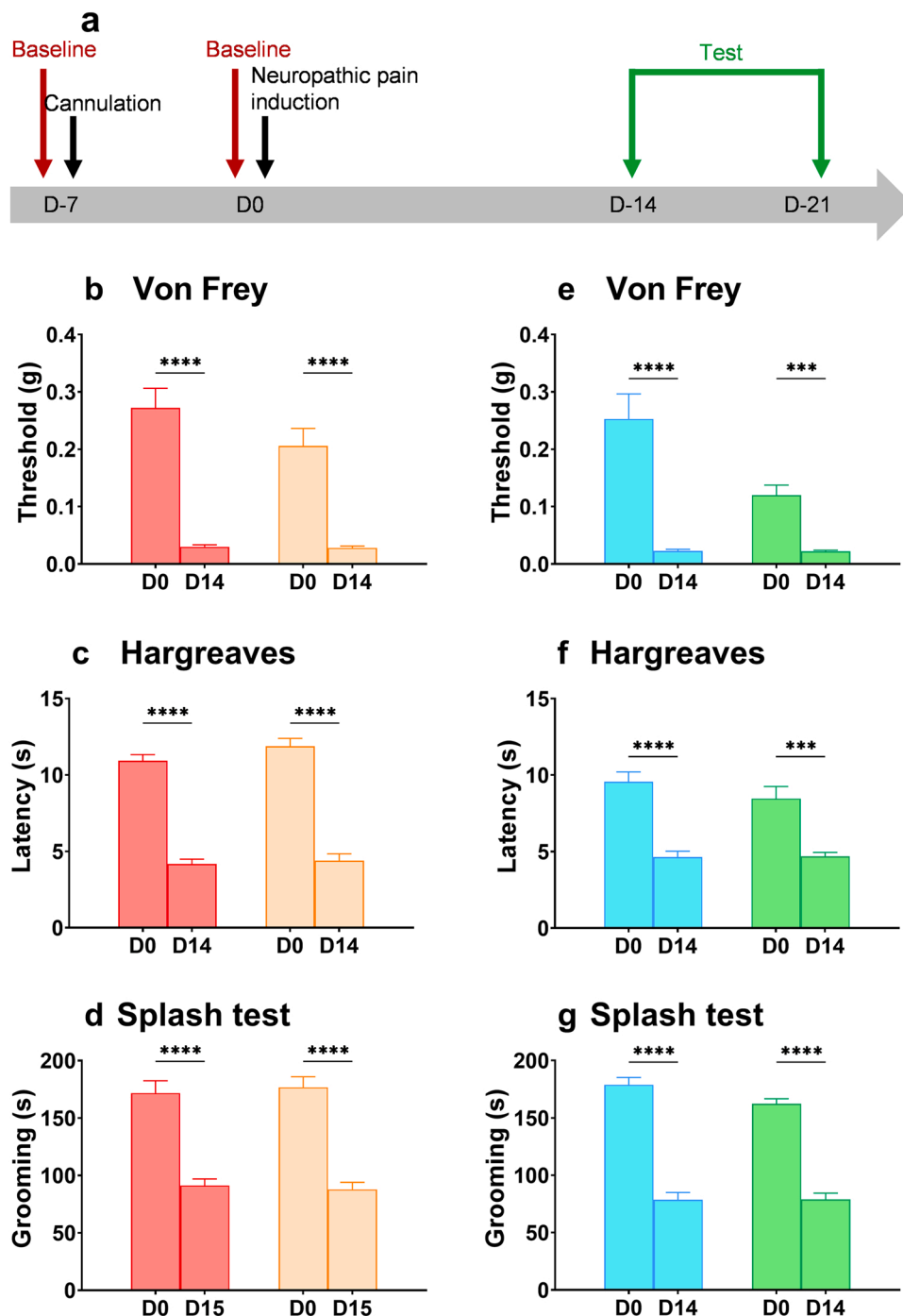
tracking software.

## 2.7. Ligands and chemicals

All chemicals were reagent grade (Merck, or Sigma, Germany). Optogluram and LSP4-2022 were synthesized following the experimental procedures previously reported [13,32]. The doses of LSP4-2022 and optogluram were selected based on doses previously used in the literature [45].

## 2.8. Statistics

All data are reported as mean  $\pm$  standard error of the mean (SEM).



**Fig. 1.** Cuff-induced mononeuropathic pain model leads to sensory and depressive-like symptoms in male and female mice. Peripheral mononeuropathy was induced by positioning a cuff around the sciatic nerve of the left or right hind paw of male and female mice. **a:** Experimental design and timeline of behavioral tests. **b, e:** Mechanical allodynia was observed both in male or female mice, 14 days after implantation of the Cuff either on the left or right hind paw, as indicated by the significant reduction of the ipsilateral paw withdrawal thresholds measured using the Von Frey technique. **c, f:** Heat allodynia was observed both in male or female mice, 14 days after implantation of the Cuff either on the left or right hind paw, as indicated by the significant reduction of the latency to withdraw the paw in the Hargreaves test. **d, g:** Depressive-like behavior assessed in the splash test revealed a significant decrease in grooming duration in both male and female Cuff mice, 15 days after induction. Data are expressed as mean  $\pm$  SEM of  $n = 7-10$  (male) or  $n = 7-10$  (female) per group. Difference between D<sub>0</sub> vs D<sub>14</sub> (or D<sub>0</sub> vs D<sub>15</sub>) was analyzed by a two-way ANOVA followed by Sidak's post-hoc test. \*\*\*\* $p < 0.0001$ ; \*\*\* $p < 0.001$ ; \*\* $p < 0.01$ ; \* $p < 0.05$ .

### 3. Results

#### 3.1. Peripheral mononeuropathy induces mechanical and heat allodynia and depressive-like symptoms in male and female mice

Throughout this study, we used a preclinical model of peripheral mononeuropathy named the “cuff model” which is provoked by the unilateral implantation of a tube enclosing the sciatic nerve. In mice, this model is known to induce long-lasting sensory symptoms such as mechanical and heat allodynia, as well as anxiodepressive-like symptoms such as a defect in grooming behavior [42]. This model reproduces similar symptoms to those of patients with neuropathic pain who often suffer from allodynia, a pathological state in which an innocuous stimuli becomes painful [2], as well as depression which is one of the most common comorbidities of neuropathic pain [9].

We measured mechanical and thermal sensitivity as well as grooming behavior before surgery (Baseline, D0), and two weeks after the induction (Fig. 1a). After 14 days, we observed a significant decrease in the paw withdrawal threshold on the side of the lesion, as measured by the Von Frey technique (Fig. 1b, e). We also observed a significant decrease of the latency to withdraw the paw from heat source, as measured by the Hargreaves test (Fig. 1c, f). This indicates that the chronic constriction of the sciatic nerve provoked by the cuff induces both mechanical and heat allodynia. In addition, 15 days after induction, mice elicit a significantly reduced duration of grooming behavior when submitted to the splash test, indicative of depressive-like behavior (Fig. 1c).

#### 3.2. Activation of mGlu<sub>4</sub> in the amygdala relieves neuropathic pain symptoms in male mice

We then questioned the ability of amygdala mGlu<sub>4</sub> to modulate symptoms of neuropathic pain. To this end, we first used a selective mGlu<sub>4</sub> agonist, LSP4–2022 [13], that we injected unilaterally (5 μM, 500 nL in PBS) either in the ipsilateral or contralateral amygdala as compared to the peripheral mononeuropathy on the right or left hind paw.

We first assessed the potential modulation of neuropathic pain symptoms by right or left amygdala mGlu<sub>4</sub> when the peripheral mononeuropathy is on the left hind paw. Interestingly, we observed that activation of the right amygdala mGlu<sub>4</sub> significantly reduces mechanical or heat allodynia whereas activation of left amygdala mGlu<sub>4</sub> does not modify them (Figs. 2a and 2b). On the other hand, activation of mGlu<sub>4</sub> in both right or left amygdala significantly restores grooming behaviour in those mice (Fig. 2c).

To verify whether this asymmetrical modulation of allodynia could result from a specialization of the right amygdala in the modulation of certain pain-related functions as previously observed [1], we performed a series of mirror experiments in which the peripheral mononeuropathy was on the right hind paw. When the neuropathy is on the right side, activation of the left amygdala mGlu<sub>4</sub> significantly reduces mechanical or heat allodynia whereas activation of right amygdala mGlu<sub>4</sub> does not modify them (Figs. 2d and 2e). Activation of mGlu<sub>4</sub> in both right or left amygdala significantly restores grooming behaviour in those mice (Fig. 2f).

This indicates that activation of mGlu<sub>4</sub> in the amygdala contralateral to the lesion is necessary and sufficient to relieve both sensory and depressive symptoms of peripheral mononeuropathy in male mice, while activation of mGlu<sub>4</sub> in the ipsilateral amygdala solely abolishes depressive-like behavior.

Another interesting observation is that activation of amygdala mGlu<sub>4</sub> by local injection of LSP4–2022 does not significantly modify mechanical or heat sensitivity, as well as grooming behavior, in Sham operated mice (supplemental Fig. 2). As previously reported [12,39,41,45], it seems that mGlu<sub>4</sub> activation solely reduces hypersensitivity or abnormal behaviors associated with pathological states without significantly

affecting normal sensitivity or behavior in healthy mice.

#### 3.3. Activation of mGlu<sub>4</sub> in the amygdala also relieves neuropathic pain symptoms in female mice

Chronic pain exhibits a higher prevalence in women than in men [9]. Over the past years, preclinical studies have highlighted several sexual dimorphisms in pain mechanisms [33,36,5] notably in the amygdala [34]. Thus, we sought to determine whether amygdala mGlu<sub>4</sub> activation can also modulate neuropathic pain symptoms in female mice. To this end, we assessed the potential modulation of neuropathic pain symptoms following activation of mGlu<sub>4</sub> by the agonist LSP4–2022 in the right or left amygdala in female mice suffering from peripheral mononeuropathy in their left hind paw.

First, as observed in male mice, the chronic constriction of the sciatic nerve provokes mechanical and thermal allodynia, as well as depressive-like symptoms in female mice. Then, following local injection of LSP4–2022, we obtained similar results as in males: i) contralateral activation is required to significantly diminish mechanical or heat allodynia while ipsilateral activation does not modify these sensory symptoms (Fig. 2g and 2h) and ii) either ipsi- or contralateral activation significantly restore grooming behaviour in female mice (Fig. 2i).

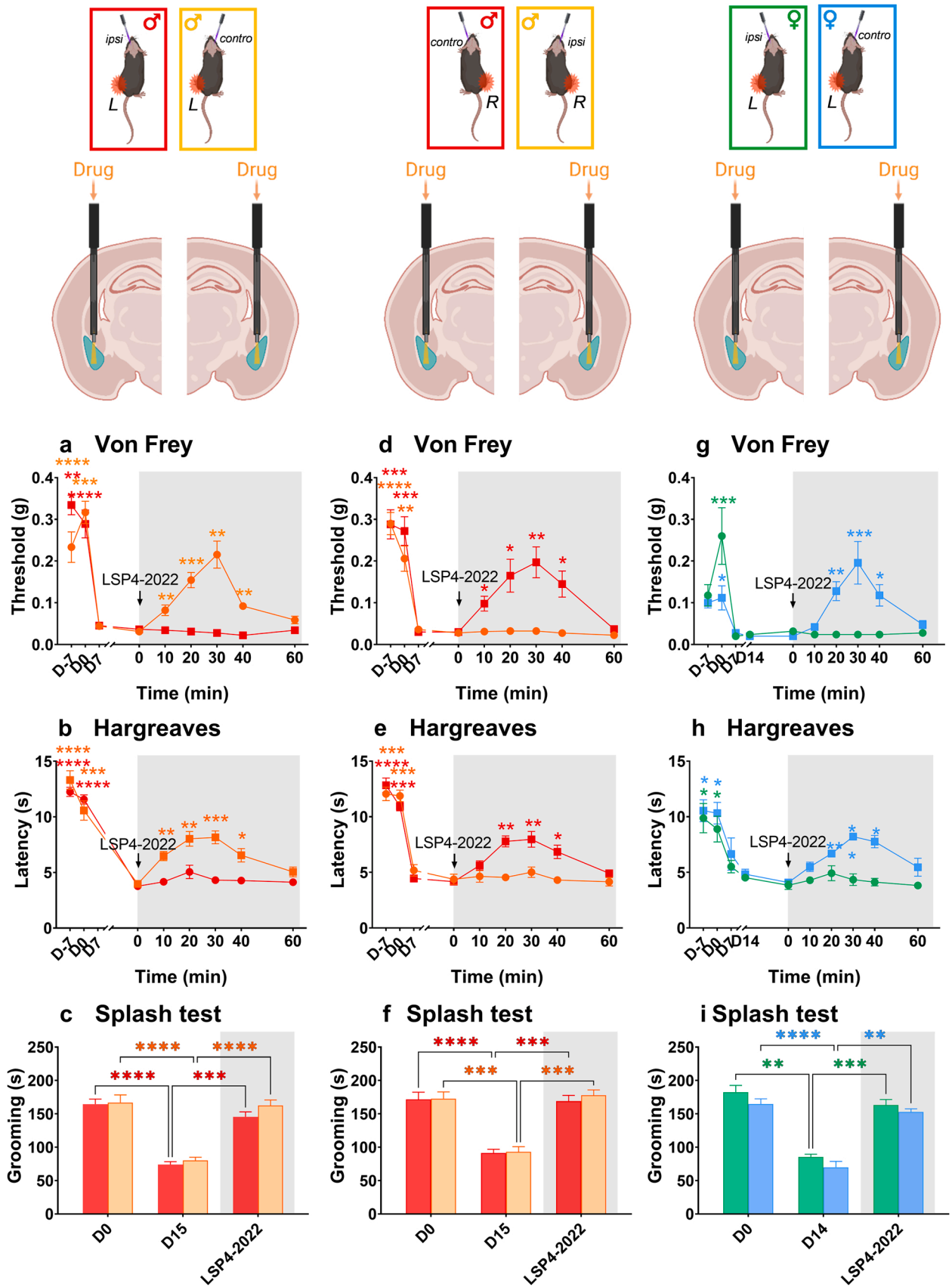
This series of experiments demonstrates that activation of amygdala mGlu<sub>4</sub> relieves neuropathic pain symptoms in both male and female mice.

#### 3.4. Photocontrolled-activation of amygdala mGlu<sub>4</sub> dynamically alleviates neuropathic pain symptoms

We then used photopharmacology, an emerging strategy to control the biological activity of endogenous proteins by light, to assess whether amygdala mGlu<sub>4</sub> can exert a dynamic modulation of neuropathic pain-related symptoms. This technique allows a precise spatiotemporal control of deep brain endogenous targets by light-operated ligands [3,18].

We used optogluram, a photoswitchable positive allosteric modulator (PAM) of mGlu<sub>4</sub> receptors, to photocontrol amygdala mGlu<sub>4</sub> receptors [32,45]. Optogluram possesses an azobenzene moiety in its scaffold which acts as a chemical switch. Optogluram is active in the dark and under illumination with violet light, isomerizes from its active trans-isomer to its inactive cis-isomer. Under subsequent illumination with green light, it switches back to its trans active isomer [45]. Experiments were performed on mice implanted with hybrid optic-fluidic cannula connected to a minipump for drug injection, and to a LED source through optic fibers for illumination. After a basal measurement at t<sub>0</sub>, ligand or vehicle were injected unilaterally either in the ipsilateral or contralateral amygdala as compared to the peripheral mononeuropathy on the left hind paw. After 15 min, the mechanical and heat sensitivity is measured to determine the effect of the treatment on these parameters. Then, from 15 to 45 min, we applied 3 successive cycles of violet/green illumination to deactivate/reactivate optogluram and measured mechanical or heat sensitivity after each illumination period of 5 min. We verified that light by itself does not modify the different symptoms measured in animals injected with saline solution (500 nL of PBS). Violet- or green-light illumination in the amygdala had no effect on the measured parameters in absence of the photoswitchable mGlu<sub>4</sub> PAM (Fig. 3a-c).

In the dark, neuropathic-induced mechanical or heat allodynia are abolished 15 min after contralateral intra-amygdala microinjection of optogluram (30 μM in 500nL of PBS), but not following ipsilateral injection. As can be seen in Figs. 3d and 3e, the anti-allodynic action of optogluram is switched off following a 5 min illumination with violet light (λ = 385 nm, 8.0 mW, 10 Hz) and recovered after 5 min of green illumination (λ = 505 nm, 2.0 mW, 10 Hz). Intra-amygdala injection of optogluram also reduced the depressive-like behavior of neuropathic mice measured with the splash test. In the dark, 15 min after ipsi- or contralateral administration, optogluram (30 μM in 500nL of PBS)



(caption on next page)

**Fig. 2. mGlu<sub>4</sub> activation in the amygdala differentially inhibits hypersensitivity and depressive-like behaviour in male and female neuropathic mice.** Peripheral mononeuropathy was induced by positioning a cuff around the sciatic nerve of the left or right hind paw of male or female mice. Beforehand, mice were implanted with a cannula on the ipsilateral or contralateral amygdala (left cuff for females). On the test day, at t<sub>0</sub>, mice were injected with the selective mGlu<sub>4</sub> agonist, LSP4–2022 (5 μM, 500 nL in PBS) either on the ipsi or contralateral amygdala to the mononeuropathy and the subsequent effects on neuropathic pain symptoms were measured. **a, d:** Effect on mechanical allodynia of mGlu<sub>4</sub> activation on the ipsilateral or contralateral amygdala on male mice with a mononeuropathy on the left or right hind paw. Mechanical allodynia as determined by the Von Frey technique. **b, e:** Effect on heat allodynia of mGlu<sub>4</sub> activation on the ipsilateral or contralateral amygdala on male mice with a mononeuropathy on the right or left hind paw. Thermal allodynia as determined by Hargreaves method. **c, f:** Effect on depressive-like symptoms of mGlu<sub>4</sub> activation on the ipsilateral or contralateral amygdala on male mice with a mononeuropathy on the right or left hind paw. Depressive-like symptoms as determined by the Splash Test. **g:** Effect on mechanical allodynia of mGlu<sub>4</sub> activation on the ipsilateral or contralateral amygdala on female mice with a mononeuropathy on the left hind paw. Mechanical allodynia as determined by the Von Frey technique. Mean threshold ± SEM (g), t<sub>x</sub> vs t<sub>0</sub> (0 min), two-way ANOVA, Dunnett's post-hoc test. **h:** Effect on heat allodynia of mGlu<sub>4</sub> activation on the ipsilateral or contralateral amygdala on female mice with a mononeuropathy on the left hind paw. Thermal allodynia as determined by Hargreaves method. **i:** Effect on depressive-like symptoms of mGlu<sub>4</sub> activation on the ipsilateral or contralateral amygdala on female mice with a mononeuropathy on the left hind paw. Depressive-like symptoms as determined by the Splash Test by measuring the time spent grooming. Data are expressed as mean ± SEM of n = 7–10 (male) or n = 7–10 (female) per group. Difference between t<sub>x</sub> vs t<sub>0</sub> (0 min) was analyzed by a two-way ANOVA followed by Dunnett's post-hoc test for panels a, b, d, e and Tukey's post-hoc test for panels c, f, i. \*\*\*p < 0.0001; \*\*p < 0.001; \*p < 0.01; \*p < 0.05.

increased the grooming duration of cuff-mice, whereas 3 min of violet light illumination reduced it to the levels observed in vehicle-treated cuff mice. Then, the increase of the grooming duration is restored following 3 min of green light illumination (Fig. 3f). Also, photopharmacological manipulation of amygdala mGlu<sub>4</sub> using optogluram does not modify mechanical sensitivity, thermal sensitivity or grooming in Sham operated mice (supplemental Fig. 3), similar to what was observed following mGlu<sub>4</sub> activation with the agonist LSP4–2022 (supplemental Fig. 2).

Taken together, these results demonstrate the dynamic nature of mGlu<sub>4</sub> control over neuropathic pain-related symptoms.

### 3.5. Amygdala mGlu<sub>4</sub> photocontrolled activation promotes analgesic conditioned place preference

Next, we used the analgesic conditioned place preference paradigm (aCPP)[37] to evaluate the analgesic potential of amygdala mGlu<sub>4</sub> activation in neuropathic mice, without the involvement of external noxious stimuli. For enhanced precision, we coupled aCPP with photopharmacology.

Experiments were performed in right implanted male mice, while the mononeuropathy was on the left hind paw. Experimental conditions for photopharmacological manipulations were similar to those described above, except that illumination was automatically controlled through a videotracking device which detects the location of the mouse.

Conditioning was performed twice daily for 5 days. During this conditioning period, neuropathic or sham mice received an intra-amygdala administration of either vehicle (500 nL of PBS) or optogluram (30 μM in 500nL of PBS) and, depending on their position in a two-chamber arena, they automatically received either a green or violet illumination through an optic fiber (Fig. 4a, b). We verified that chronic treatment with optogluram does not lead to tolerance. Neuropathic mice received an intra-amygdala microinjection of optogluram (30 μM in 500nL PBS) twice daily for 5 days, which corresponds to the conditioning period. We measured the anti-allodynic effect of optogluram on day 6 (supplementary figure 4) and observed no difference on the peak effect of the drug (15 min following intra-amygdala injection of optogluram) on the paw withdrawal threshold measured by the Von Frey technique that was measured at D14 post-induction.

On the 6th day, we tested the eventual preference of neuropathic or sham mice for the “green chamber” (in which optogluram was switched-on through green illumination) over the “violet chamber” (in which it was switched-off through violet illumination). During this test, mice received no drug or light treatment. The time spent in each chamber was measured using the videotracking device. As can be seen in Fig. 4c–f, the group of conditioned neuropathic mice that received the optogluram treatment significantly preferred the green area, contrary to the conditioned mice that received saline which exhibited no preference. No difference between the time spent in the violet or green areas was

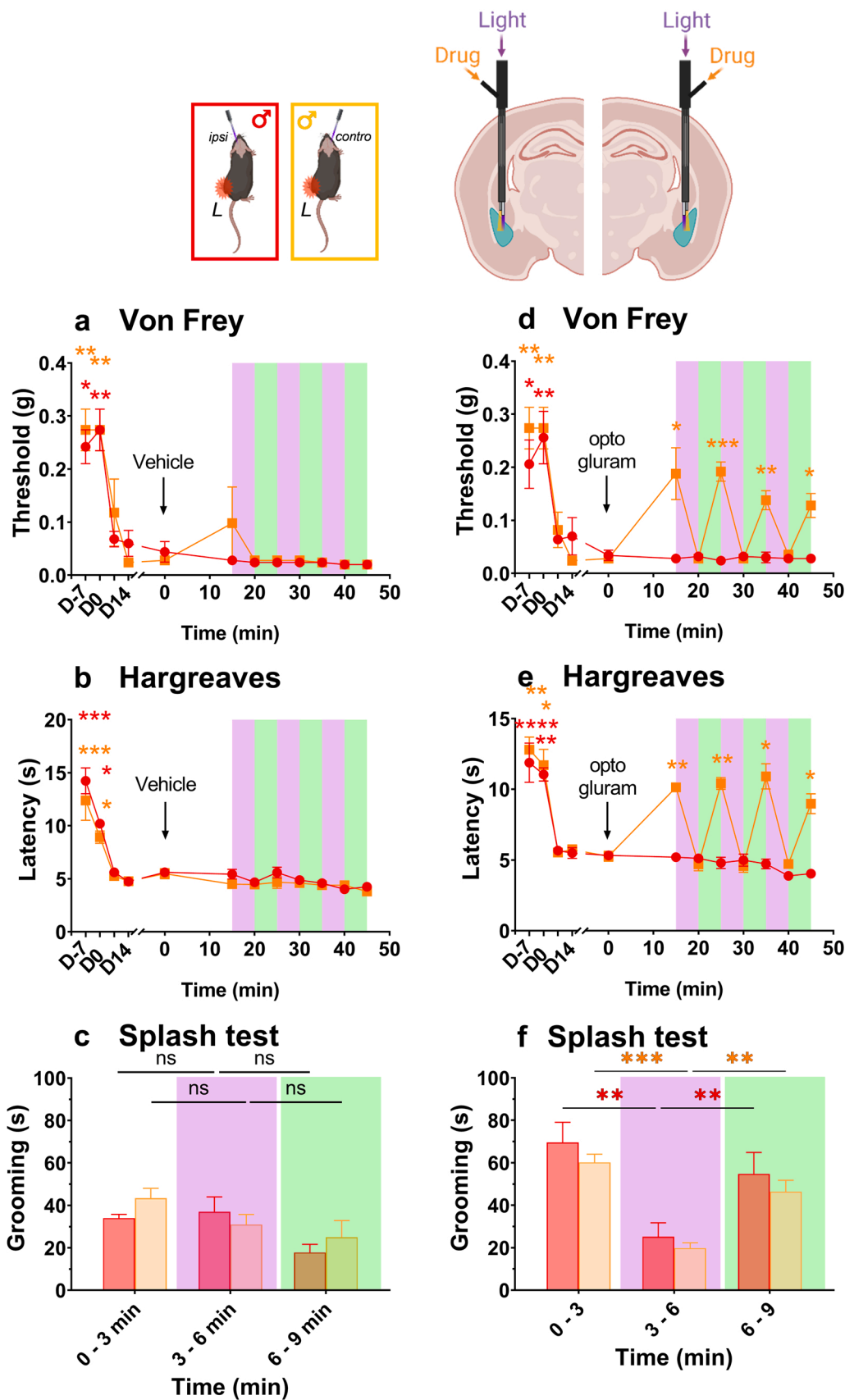
observed in non-conditioned Sham or neuropathic mice (supplemental Fig. 5 and 6).

These experiments demonstrate the analgesic potential of amygdala mGlu<sub>4</sub> activation in neuropathic mice.

## 4. Discussion

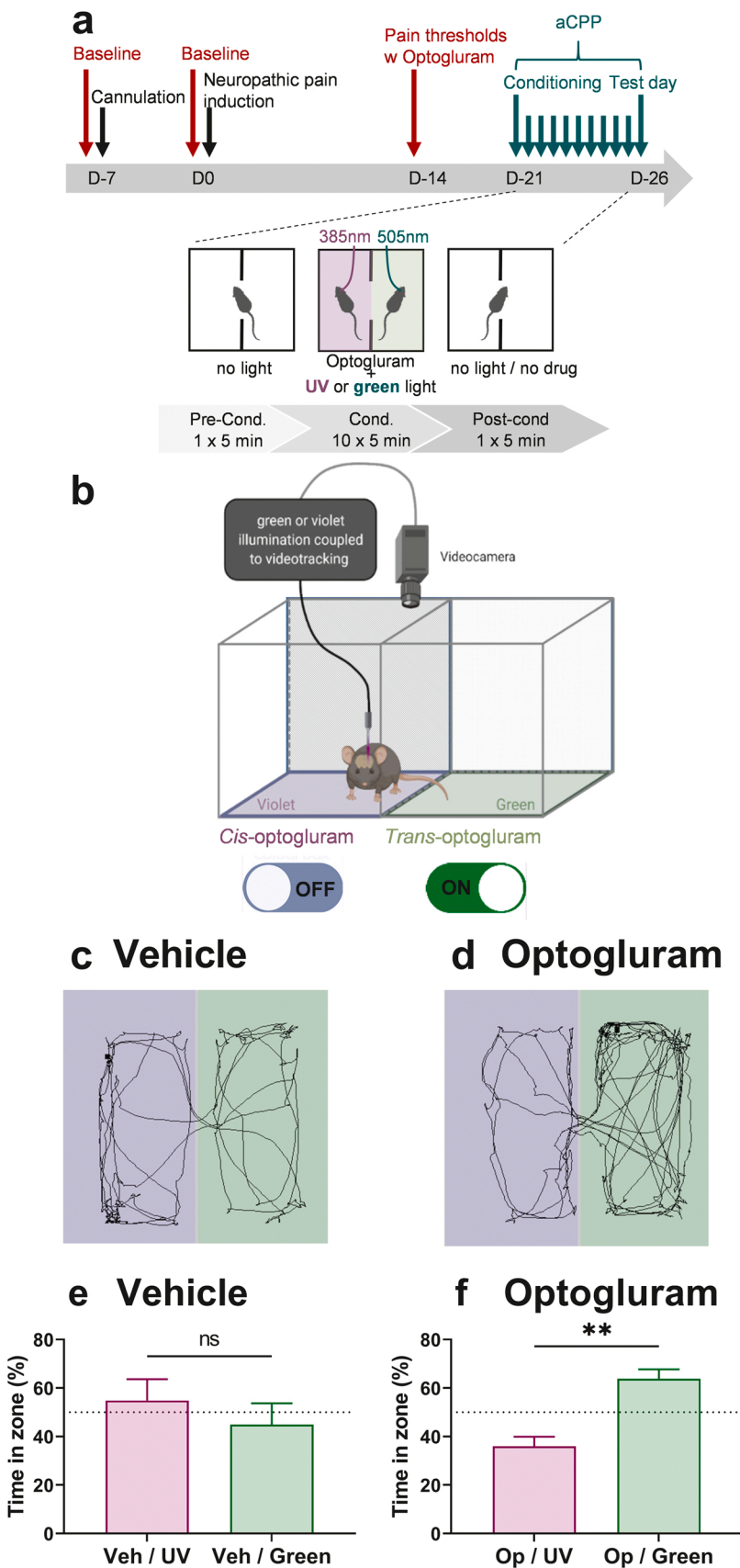
In this study we demonstrate that sensory and depressive symptoms of neuropathic pain are rapidly and efficiently relieved under mGlu<sub>4</sub> control in male and female mice, and that ipsi- or contralateral amygdala differentially contribute to the modulation of these symptoms. The contralateral amygdala is necessary and sufficient to alleviate both sensory and depressive-like symptoms resulting from peripheral mononeuropathy, while mGlu<sub>4</sub> activation in the ipsilateral amygdala only reduces depressive-like symptoms (Fig. 5). Using photopharmacology, we reveal that amygdala mGlu<sub>4</sub> exerts a rapid and dynamic control over neuropathic pain-related symptoms. The analgesic potential of amygdala mGlu<sub>4</sub> activation was further underlined in the conditioned place preference paradigm. This method has been successfully used to probe the efficacy of various analgesics [25,37]. The interest of aCPP is that subject animals determine by themselves the analgesic efficacy of a given treatment, without the involvement of external noxious stimuli. To our knowledge, this is the first time that aCPP has been coupled with photopharmacology. All mice received a similar treatment by a photo-switchable mGlu<sub>4</sub> PAM and, depending on their position in a two-chamber arena automatically detected by a videotracking device coupled to the illumination source, the ligand was activated or deactivated by light. After the conditioning period, mice clearly preferred the context in which the activity of amygdala mGlu<sub>4</sub> receptors was potentiated. Also of interest, we did not observe a decrease in the efficacy of anti-allodynic action following repeated treatment by optogluram, indicating a lack of tolerance (supplemental Fig. 4).

Our results extend previous works demonstrating that exogenous activation of mGlu<sub>4</sub> receptors is beneficial for chronic pain symptoms. Systemic administration of the mGlu<sub>4</sub> selective agonist LSP4–2022 relieves symptoms of chronic pain from different etiologies [39]. At the spinal cord level, mGlu<sub>4</sub> receptors are found in the inner laminae II of the dorsal horn, a region that receives the afferences from nociceptive Aδ- and C-fibers, where its activation reduces excitatory neurotransmission through the inhibition of Ca<sup>2+</sup> entry via N or P/Q type voltage-gated calcium channels in the presynaptic terminal [39]. Intrathecal injection of mGlu<sub>4</sub> agonists, such as LSP4–2022, or PAMs, such as PHCCC or VU0155041, alleviates allodynia and hyperalgesia induced by both inflammatory or neuropathic pain without altering acute pain perception in naive animals [12,39,41]. At the supraspinal level, mGlu<sub>4</sub> receptors have been identified in important regions for pain processing, such as the thalamus [11] and the amygdala [45]. Bilateral activation of amygdala mGlu<sub>4</sub> alleviates pain symptoms in a mouse model of persistent inflammatory pain [45]. Taken together, these results demonstrate

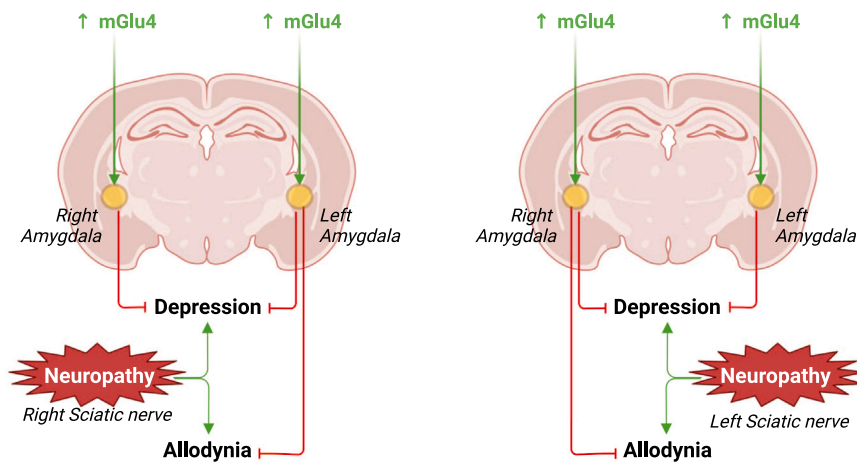


**Fig. 3. Photopharmacological manipulation of mGlu<sub>4</sub> in the amygdala rapidly and reversibly inhibits hypersensitivity and depressive-like behaviour of neuropathic mice.** Effects on neuropathic pain symptoms of amygdala mGlu<sub>4</sub> photocontrolled facilitation by the photoswitchable mGlu<sub>4</sub> PAM optogluram were measured on male mice with a cuff implanted around the left hind paw, from 14 to 21 days post induction. Local drug and light delivery was performed through a stereotaxically implanted hybrid optofluidic cannula. On the test day, at  $t_0$ , mice were injected unilaterally either with vehicle (500 nL PBS) or optogluram (30  $\mu$ M, 500 nL in PBS) either on the ipsi or contralateral amygdala to the mono-neuropathy. Violet (385 nm, 10 Hz, 8 mW) or green light (505 nm, 10 Hz, 2 mW) was applied by the mean of an optic fiber connected to a LED light source and a controller. **a.** Lack of effect of light on mechanical allodynia on vehicle-treated mice as determined by the Von Frey technique. **b.** Lack of effect of light on heat allodynia on vehicle-treated mice as determined by Hargreaves method. **c.** Lack of effect of light on depressive-like symptoms on vehicle-treated mice as determined by the Splash Test method. **d.** Effect of mGlu<sub>4</sub> photocontrolled facilitation on mechanical allodynia as determined by the Von Frey technique. **e.** Effect of mGlu<sub>4</sub> photocontrolled facilitation on heat allodynia as determined by Hargreaves method. **f.** Effect of mGlu<sub>4</sub> photocontrolled facilitation on depressive-like symptoms as determined by the Splash Test method. Data are expressed as mean  $\pm$  SEM of  $n = 5$  per group. Difference between  $t_x$  vs  $t_0$  (0 min) was analyzed by a two-way ANOVA followed by Dunnett's post-hoc test for panels a, b and Tukey's post-hoc test for panels c. \*\*\*  $p < 0.0001$ ; \*\*  $p < 0.001$ ; \*  $p < 0.01$ ; \*  $p < 0.05$ ; ns non significant.





**Fig. 4. Photopharmacological facilitation of amygdala mGlu<sub>4</sub> promotes analgesic conditioned place preference (aCPP) of neuropathic mice.** **a:** Experimental design and timeline of behavioral tests. On these experiments, neuropathy was induced by application of a cuff on the left hind paw of male mice, beforehand implanted with a hybrid optofluidic cannula on the contralateral (right) amygdala. The conditioning took place between from day 21 to day 25, the test day was day 26 post surgery. Mice were submitted to 10 conditioning episodes of 5 min, twice daily for 5 days. During each conditioning episode, animals were injected with either vehicle (PBS) or optogluam (30  $\mu$ M, 500nL in PBS). Fifteen minutes after injection (when drug reached its maximal effect), mice were placed for 5 min in a two-chambers arena and allowed to move freely. Mice were first placed alternatively in the one or the other chamber. The 6th day, the animals were placed in the center of the arena, receiving no drug or light treatment, and their real-time place preference was measured during 5 min through a videotracking software. **b:** Schematic representation of the aCPP setup. The arena consists in two-chambers with different context (striped or dotted walls) connected through a central open door. The illumination is automatically controlled through a video tracking device coupled to the light source controller. When the mouse is detected in the “violet chamber”, it receives a 385 nm LED illumination, while it receives a 505 nm LED illumination when it is in the green chamber. **c, d:** Test results: representative 5-minutes tracks of a neuropathic mouse which received either vehicle (c) or optogluam (d) during the conditioning period. **e, f:** Test results: Data are expressed as mean percentage  $\pm$  SEM of time spent in the “green chamber” or the “violet chamber” of neuropathic mice treated with Vehicle (n = 8) or with Optogluam (n = 12) during conditioning. Difference between time in Violet vs time in Green area was analyzed by a one-way ANOVA followed by a Tukey’s post-hoc test. \* \*p < 0.01.



**Fig. 5.** Contralateral amygdala mGlu<sub>4</sub> is necessary and sufficient to relieve both sensory and depressive-like symptoms of peripheral mononeuropathy. Left hind-paw neuropathic pain sensory and depressive symptoms are relieved by right amygdala mGlu<sub>4</sub> activation whereas left amygdala mGlu<sub>4</sub> activation solely abolishes depressive-like symptoms. Conversely, all symptoms resulting from right hind-paw neuropathic pain are relieved by left amygdala mGlu<sub>4</sub> activation whereas right amygdala mGlu<sub>4</sub> activation solely abolishes depressive-like symptoms. *Ipso facto*, activation of mGlu<sub>4</sub> in either ipsilateral or contralateral amygdala to the mononeuropathy abolishes mice depressive-like behavior.

the ability of mGlu<sub>4</sub> to modulate various symptoms of chronic pain of different etiologies without modifying acute pain perception, reinforcing its therapeutic interest for the treatment of pathological pain.

Curiously, we did not observe an asymmetrical lateralization between the right or left amygdala. Indeed, previous studies have described a hemispheric specialization of pain-related functions in amygdala (see [1] for review). For example, independently of the inflamed side, the modulation of mechanic allodynia solely occurs following the blockade of right but not left CeA mGlu<sub>5</sub> receptors and ERK pathways [20,6,7]. Similarly, sensitization is only observed in the right CeA following right or left monoarthritis [19]. In our experiments, however, mGlu<sub>4</sub> receptors from both sides can modulate sensory or depressive-like symptoms depending on their relative position to the peripheral mononeuropathy. The key for the modulation of sensory symptoms appears to be the localization on the contralateral side to the constriction of the sciatic nerve. Of note, studies revealing the specialization of amygdala function in pain were performed in CeA [1], whereas the amygdalar expression of mGlu<sub>4</sub> receptors is mainly restricted to terminals arriving in the BLA and the LA, with little or no expression in the CeA [45]. Thus, the absence of specialization of left or right amygdala mGlu<sub>4</sub> function could result from the localization of mGlu<sub>4</sub> receptors in the LA and BLA rather than in the CeA.

Interestingly, the fact that amygdala mGlu<sub>4</sub> on the ipsi- or contralateral side to the nerve constriction differentially contributes to pain modulation suggests that mGlu<sub>4</sub> achieves its analgesic effects through the neuromodulation of different circuits (Fig. 5). Indeed, while mGlu<sub>4</sub> activation in the contralateral amygdala to the mononeuropathy relieves both sensory and depressive-like symptoms, their activation on the ipsilateral amygdala solely decreases depressive-like symptoms. This indicates that at least two different circuits are at play, differentially regulating sensory and anxiodepressive components, and that mGlu<sub>4</sub> can modulate both of them. These circuits remain to be identified.

The necessity to activate mGlu<sub>4</sub> on the contralateral side to the mononeuropathy to alleviate hypersensitivity suggests that the regulation of sensory symptoms may occur through a modulation of the sensory modalities coming from thalamus nuclei [27]. Indeed, in the spinothalamic tract, most secondary projection neurons of the spinal cord which transmit nociceptive information received from peripheral sensory neurons decussate and send ascending information terminating in various thalamic nuclei [22]. As a result, activation of the thalamus is significantly greater in the hemisphere contralateral to the stimulus, consistent with its involvement in the processing the sensory-discriminative aspects of pain [44]. This means that peripheral nociceptive information from the left side of the body is transmitted to the right side at the supraspinal level, and conversely. We have previously shown that mGlu<sub>4</sub> receptors are expressed in presynaptic terminals of glutamatergic and GABAergic neurons arriving in the LA and BLA,

where they downregulate the transmission coming from the thalamus [45]. Their activation could in turn normalize the activities of LA and BLA neurons. One of the main targets of those neurons is the CeA. Thus, we can speculate that mGlu<sub>4</sub> may modulate the activity within the BLA–CeA circuit, which has been implicated in the generation and modulation of pain-like behaviors [23,27]. Besides the CeA, several pathways regulating specific aspects of pain originating from BLA have been identified recently. For example, the BLA–mPFC–PAG pathway is crucial for the development of mechanical and thermal hypersensitivity after peripheral nerve injury [17] and could be another pathway involved in the reduction of mechanical and thermal hypersensitivity following mGlu<sub>4</sub> activation. We can also hypothesize that mGlu<sub>4</sub> activation could modulate the neural ensemble within BLA identified by Corder and colleagues that mediates chronic pain unpleasantness [10]. However, these points remain largely speculative and further studies will be required in order to identify the input and output circuits modulated by amygdala mGlu<sub>4</sub> receptors.

In conclusion, this study provides strong evidence for a rapid and reversible reduction of neuropathic pain following activation of mGlu<sub>4</sub> receptors in the amygdala. Together with previous research, it demonstrates that exogenous activation or facilitation of mGlu<sub>4</sub> receptors is beneficial in different preclinical models of chronic pain, underlining their therapeutic potential for the management of chronic pain from various etiologies.

#### Funding

This work was supported by the International Emerging Action (IEA) from the Centre National de la Recherche Scientifique (CNRS) to CG and AL and by grants from the French National Research Agency (ANR): ANR-16-CE16-0010 to CG and ANR-17-NEU3-0001 under the frame of Neuron Cofund to CG and AL.

#### Competing Interests

The authors declare no competing interests.

#### Data availability

No data was used for the research described in the article.

#### Acknowledgments

The authors wish to thank Dr. Francine Acher for kindly providing LSP4-2022, Dr. Guillaume Lebon, Dr. Julie Le Merrer, Dr. Jérôme Becker and Dr. Laurent Givalois for helpful discussions and Dr. Ebba L. Lagerqvist for critical reading of the manuscript. Behavioral experiments

were performed at the *iExplore* facility of Montpellier Biocampus and the authors thank the staff of the facility for their technical help. The illustrative graphics were created with BioRender.com.

#### CRedit authorship contribution statement

**Vanessa Pereira:** Conceptualization, Methodology, Investigation, Formal analysis, Writing – review & editing. **Juri Aparicio Arias:** Investigation, Methodology, Validation, Formal analysis, Writing – review & editing. **Amadeu Llebaria:** Conceptualization, Resources, Funding acquisition, Writing – review & editing. **Cyril Goudet:** Conceptualization, Visualization, Writing – original draft, Writing – review & editing, Supervision, Project administration, Funding acquisition.

#### Appendix A. Supporting information

Supplementary data associated with this article can be found in the online version at [doi:10.1016/j.phrs.2022.106602](https://doi.org/10.1016/j.phrs.2022.106602).

#### References

- H.N. Allen, H.J. Bobnar, B.J. Kolber, Left and right hemispheric lateralization of the amygdala in pain, *Prog. Neurobiol.* 196 (2021), 101891.
- S.R.A. Alles, P.A. Smith, Etiology and pharmacology of neuropathic pain, *Pharmacol. Rev.* 70 (2018) 315–347.
- A.E. Berizzi, C. Goudet, Strategies and considerations of G-protein-coupled receptor photopharmacology, *Adv. Pharmacol.* 88 (2020) 143–172.
- R.P. Bonin, C. Bories, Y. De Koninck, A simplified up-down method (SUDO) for measuring mechanical nociception in rodents using von Frey filaments, *Mol. Pain.* 10 (2014) 26.
- D. Cabanero, E. Villalba-Riquelme, G. Fernandez-Ballester, A. Fernandez-Carvajal, A. Ferrer-Montiel, ThermoTRP channels in pain sexual dimorphism: new insights for drug intervention, *Pharmacol. Ther.* (2022), 108297.
- Y. Carrasquillo, R.Wt Gereau, Activation of the extracellular signal-regulated kinase in the amygdala modulates pain perception, *J. Neurosci.: Off. J. Soc. Neurosci.* 27 (2007) 1543–1551.
- Y. Carrasquillo, R.Wt Gereau, Hemispheric lateralization of a molecular signal for pain modulation in the amygdala, *Mol. Pain.* 4 (2008) 24.
- S.R. Chen, H.L. Pan, Distinct roles of group III metabotropic glutamate receptors in control of nociception and dorsal horn neurons in normal and nerve-injured Rats, *J. Pharmacol. Exp. Ther.* 312 (2005) 120–126.
- L. Colloca, T. Ludman, D. Bouhassira, R. Baron, A.H. Dickenson, D. Yarnitsky, R. Freeman, A. Truini, N. Attal, N.B. Finnerup, C. Eccleston, E. Kalso, D.L. Bennett, R.H. Dworkin, S.N. Raja, Neuropathic pain, *Nat. Rev. Dis. Prim.* 3 (2017) 17002.
- G. Corder, B. Ahanonu, B.F. Grewe, D. Wang, M.J. Schnitzer, G. Scherrer, An amygdalar neural ensemble that encodes the unpleasantness of pain, *Science* 363 (2019) 276–281.
- C. Corti, L. Aldegheri, P. Somogyi, F. Ferraguti, Distribution and synaptic localisation of the metabotropic glutamate receptor 4 (mGluR4) in the rodent CNS, *Neuroscience* 110 (2002) 403–420.
- C. Goudet, E. Chapuy, A. Alloui, F. Acher, J.P. Pin, A. Eschaliere, Group III metabotropic glutamate receptors inhibit hyperalgesia in animal models of inflammation and neuropathic pain, *Pain* 137 (2008) 112–124.
- C. Goudet, B. Vilar, T. Courtiol, T. Deltheil, T. Bessiron, I. Brabet, N. Oueslati, D. Rigault, H.O. Bertrand, H. McLean, H. Daniel, M. Amalric, F. Acher, J.P. Pin, A novel selective metabotropic glutamate receptor 4 agonist reveals new possibilities for developing subtype selective ligands with therapeutic potential, *FASEB J.: Off. Publ. Fed. Am. Soc. Exp. Biol.* 26 (2012) 1682–1693.
- K.J. Gregory, C. Goudet, International union of basic and clinical pharmacology. CXI. Pharmacology, signaling, and physiology of metabotropic glutamate receptors, *Pharmacol. Rev.* 73 (2021) 521–569.
- K. Hargreaves, R. Dubner, F. Brown, C. Flores, J. Joris, A new and sensitive method for measuring thermal nociception in cutaneous hyperalgesia, *Pain* 32 (1988) 77–88.
- P. Hasanein, M. Parviz, M. Keshavarz, K. Javanmardi, CB1 receptor activation in the basolateral amygdala produces antinociception in animal models of acute and tonic nociception, *Clin. Exp. Pharmacol. Physiol.* 34 (2007) 439–449.
- J. Huang, V.M. Gadotti, L. Chen, I.A. Souza, S. Huang, D. Wang, C. Ramakrishnan, K. Deisseroth, Z. Zhang, G.W. Zamponi, A neuronal circuit for activating descending modulation of neuropathic pain, *Nat. Neurosci.* 22 (2019) 1659–1668.
- K. Hull, J. Morstein, D. Trauner, In vivo photopharmacology, *Chem. Rev.* 118 (2018) 10710–10747.
- G. Ji, V. Neugebauer, Hemispheric lateralization of pain processing by amygdala neurons, *J. Neurophysiol.* 102 (2009) 2253–2264.
- B.J. Kolber, M.C. Montana, Y. Carrasquillo, J. Xu, S.F. Heinemann, L.J. Muglia, R. Wt Gereau, Activation of metabotropic glutamate receptor 5 in the amygdala modulates pain-like behavior, *J. Neurosci.: Off. J. Soc. Neurosci.* 30 (2010) 8203–8213.
- M. Kremer, L.J. Becker, M. Barrot, I. Yalcin, How to study anxiety and depression in rodent models of chronic pain? *Eur. J. Neurosci.* 53 (2021) 236–270.
- R. Kuner, T. Kuner, Cellular circuits in the brain and their modulation in acute and chronic pain, *Physiol. Rev.* 101 (2021) 213–258.
- M. Mazzitelli, K. Marshall, A. Pham, G. Ji, V. Neugebauer, Optogenetic manipulations of amygdala neurons modulate spinal nociceptive processing and behavior under normal conditions and in an arthritis pain model, *Front Pharmacol.* 12 (2021), 668337.
- M. Mazzitelli, P. Presto, N. Antenucci, S. Meltan, V. Neugebauer, Recent advances in the modulation of pain by the metabotropic glutamate receptors, *Cells* (2022) 11.
- G. McKendrick, N.M. Graziane, Drug-induced conditioned place preference and its practical use in substance use disorder research, *Front Behav. Neurosci.* 14 (2020), 582147.
- N. Mercer Lindsay, C. Chen, G. Gilam, S. Mackey, G. Scherrer, Brain circuits for pain and its treatment, *Sci. Transl. Med.* 13:eabj7 (2021) 360.
- V. Neugebauer, Amygdala physiology in pain, *Handb. Behav. Neurosci.* 26 (2020) 101–113.
- V. Neugebauer, M. Mazzitelli, B. Cragg, G. Ji, E. Navratilova, F. Porreca, Amygdala, neuropeptides, and chronic pain-related affective behaviors, *Neuropharmacology* 170 (2020), 108052.
- E. Palazzo, Y. Fu, G. Ji, S. Maione, V. Neugebauer, Group III mGluR7 and mGluR8 in the amygdala differentially modulate nocifensive and affective pain behaviors, *Neuropharmacology* 55 (2008) 537–545.
- R.D. Palmiter, The parabrachial nucleus: CGRP neurons function as a general alarm, *Trends Neurosci.* 41 (2018) 280–293.
- V. Pereira, C. Goudet, Emerging trends in pain modulation by metabotropic glutamate receptors, *Front. Mol. Neurosci.* 11 (2018) 464.
- S. Pittolo, X. Gomez-Santacana, K. Eckelt, X. Rovira, J. Dalton, C. Goudet, J.P. Pin, A. Llobet, J. Giraldo, A. Llebaria, P. Gorostiza, An allosteric modulator to control endogenous G protein-coupled receptors with light, *Nat. Chem. Biol.* 10 (2014) 813–815.
- P. Presto, M. Mazzitelli, R. Junell, Z. Griffin, V. Neugebauer, Sex differences in pain along the neuraxis, *Neuropharmacology* 210 (2022), 109030.
- P. Presto, V. Neugebauer, Sex differences in CGRP regulation and function in the amygdala in a rat model of neuropathic pain, *Front Mol. Neurosci.* 15 (2022), 928587.
- M. Roche, E. O'Connor, C. Diskin, D.P. Finn, The effect of CB(1) receptor antagonism in the right basolateral amygdala on conditioned fear and associated analgesia in rats, *Eur. J. Neurosci.* 26 (2007) 2643–2653.
- J.L. Sharp, T. Pearson, M.A. Smith, Sex differences in opioid receptor mediated effects: role of androgens, *Neurosci. Biobehav. Rev.* 134 (2022), 104522.
- K.J. Sufka, Conditioned place preference paradigm: a novel approach for analgesic drug assessment against chronic pain, *Pain* 58 (1994) 355–366.
- O. van Hecke, S.K. Austin, R.A. Khan, B.H. Smith, N. Torrance, Neuropathic pain in the general population: a systematic review of epidemiological studies, *Pain* 155 (2014) 654–662.
- B. Vilar, J. Busserolles, B. Ling, S. Laffray, L. Ulmann, F. Malhaire, E. Chapuy, Y. Aissouni, M. Etienne, E. Bourinet, F. Acher, J.P. Pin, A. Eschaliere, C. Goudet, Alleviating pain hypersensitivity through activation of type 4 metabotropic glutamate receptor, *J. Neurosci.: Off. J. Soc. Neurosci.* 33 (2013) 18951–18965.
- J. Wahis, A. Baudon, F. Althammer, D. Kerspern, S. Goyon, D. Hagiwara, A. Lefevre, L. Barteczko, B. Boury-Jamot, B. Bellanger, M. Abatis, M. Da Silva Gouveia, D. Benusiglio, M. Eliava, A. Rozov, I. Weinsanto, H.S. Knobloch-Bollmann, M.K. Kirchner, R.K. Roy, H. Wang, M. Pertin, P. Inquimbert, C. Pitzer, J. Siemens, Y. Goumon, B. Boutrel, C.M. Lamy, I. Decosterd, J.Y. Chatton, N. Rouach, W.S. Young, J.E. Stern, P. Poisbeau, R. Stoop, P. Darbon, V. Grinevich, A. Charlet, Astrocytes mediate the effect of oxytocin in the central amygdala on neuronal activity and affective states in rodents, *Nat. Neurosci.* 24 (2021) 529–541.
- H. Wang, W. Jiang, R. Yang, Y. Li, Spinal metabotropic glutamate receptor 4 is involved in neuropathic pain, *Neuroreport* 22 (2011) 244–248.
- I. Yalcin, Y. Bohren, E. Waltisperger, D. Sage-Ciocca, J.C. Yin, M.J. Freund-Mercier, M. Barrot, A time-dependent history of mood disorders in a murine model of neuropathic pain, *Biol. Psychiatry* 70 (2011) 946–953.
- I. Yalcin, S. Megat, F. Barthas, E. Waltisperger, M. Kremer, E. Salvat, M. Barrot, The sciatic nerve cuffing model of neuropathic pain in mice, *J. Vis. Exp.* (2014).
- P.D. Youell, R.G. Wise, D.E. Bentley, M.R. Dickinson, T.A. King, I. Tracey, A. K. Jones, Lateralisation of nociceptive processing in the human brain: a functional magnetic resonance imaging study, *Neuroimage* 23 (2004) 1068–1077.
- C. Zussy, X. Gomez-Santacana, X. Rovira, D. De Bundel, S. Ferrazzo, D. Bosch, D. Asede, F. Malhaire, F. Acher, J. Giraldo, E. Valjent, I. Ehrlich, F. Ferraguti, J. P. Pin, A. Llebaria, C. Goudet, Dynamic modulation of inflammatory pain-related affective and sensory symptoms by optical control of amygdala metabotropic glutamate receptor 4, *Mol. Psychiatry* 23 (2018) 509–520.

# Photopharmacological manipulation of amygdala metabotropic glutamate receptor mGlu4 alleviates neuropathic pain

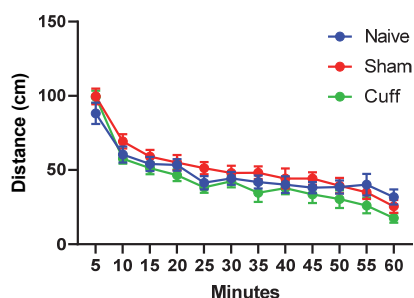
Vanessa Pereira<sup>1</sup>, Juri Aparicio Arias<sup>1</sup>, Amadeu Llebaria<sup>2</sup>, Cyril Goudet<sup>1</sup>✉

<sup>1</sup> IGF, Univ. Montpellier, CNRS, INSERM, Montpellier, France

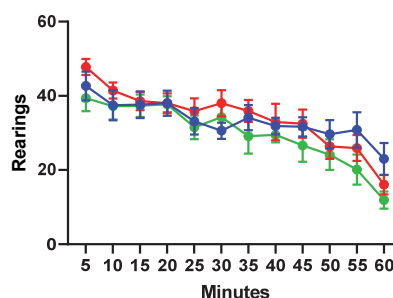
<sup>2</sup> MCS, Laboratory of Medicinal Chemistry & Synthesis, Department of Biological Chemistry, Institute for Advanced Chemistry of Catalonia (IQAC-CSIC), Barcelona, Spain

## SUPPLEMENTAL FIGURES, TABLES AND LEGENDS

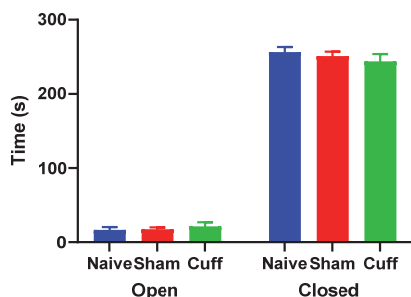
### a Locomotion



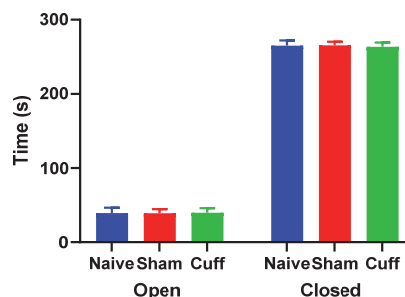
### b Locomotion



### c EPM



### d EOM

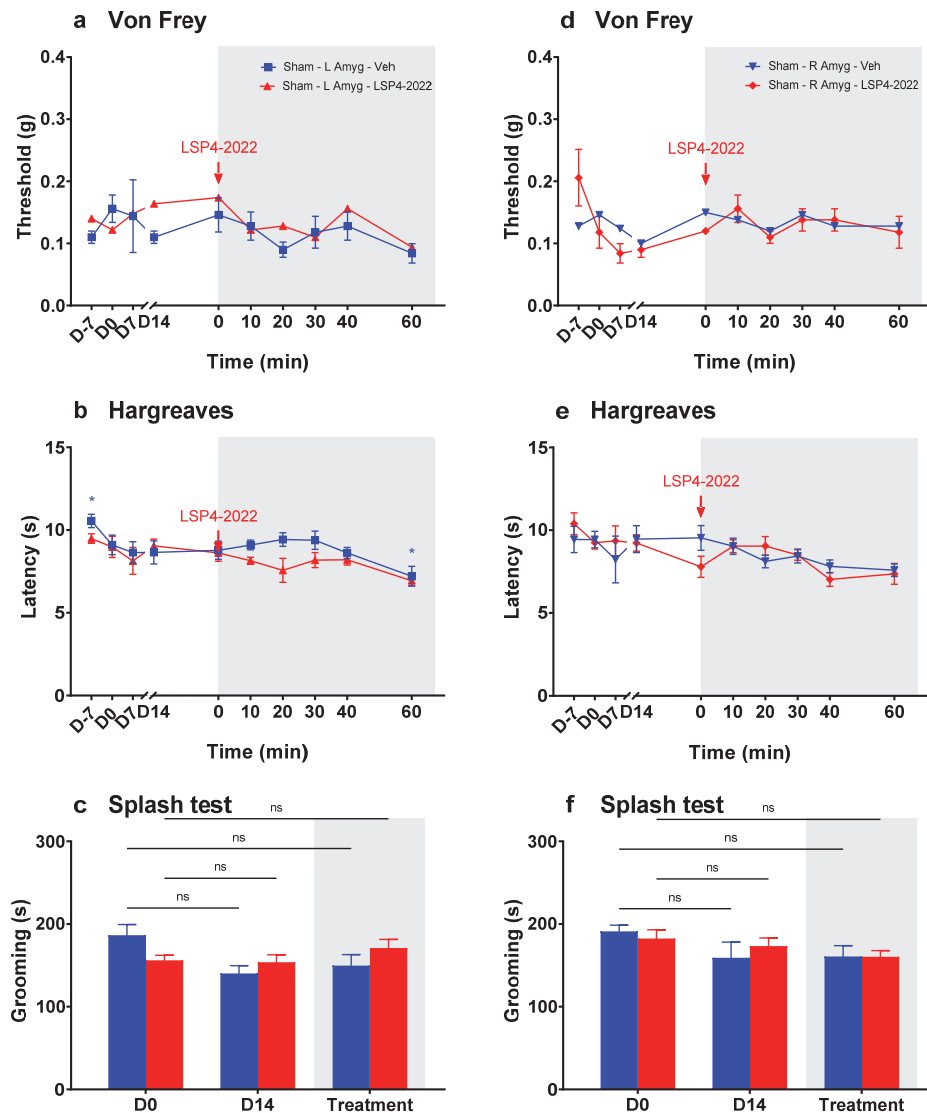


**Supplemental figure 1: Cuff-induced mononeuropathic pain model does not significantly impair locomotion or elicit anxiety-like behavior in male mice.** a-b: Mice locomotion was assessed using cyclotron/circular corridor. No significant difference in the numbers of  $\frac{1}{4}$  turns or number of rearing was observed between Naïve, Sham or Cuff mice 7 days following surgery. c-d: Anxiety-like behavior was assessed in the elevated plus maze (EPM) or elevated O-maze (EOM). No significant difference in time spent in open arms or closed arm between Naïve, Sham or Cuff mice 17 (EPM) and 18 days (EOM) following surgery. (male mice, Naïve n=10, Sham n=10, Cuff n=9, two-way ANOVA, Tukey post-hoc test).

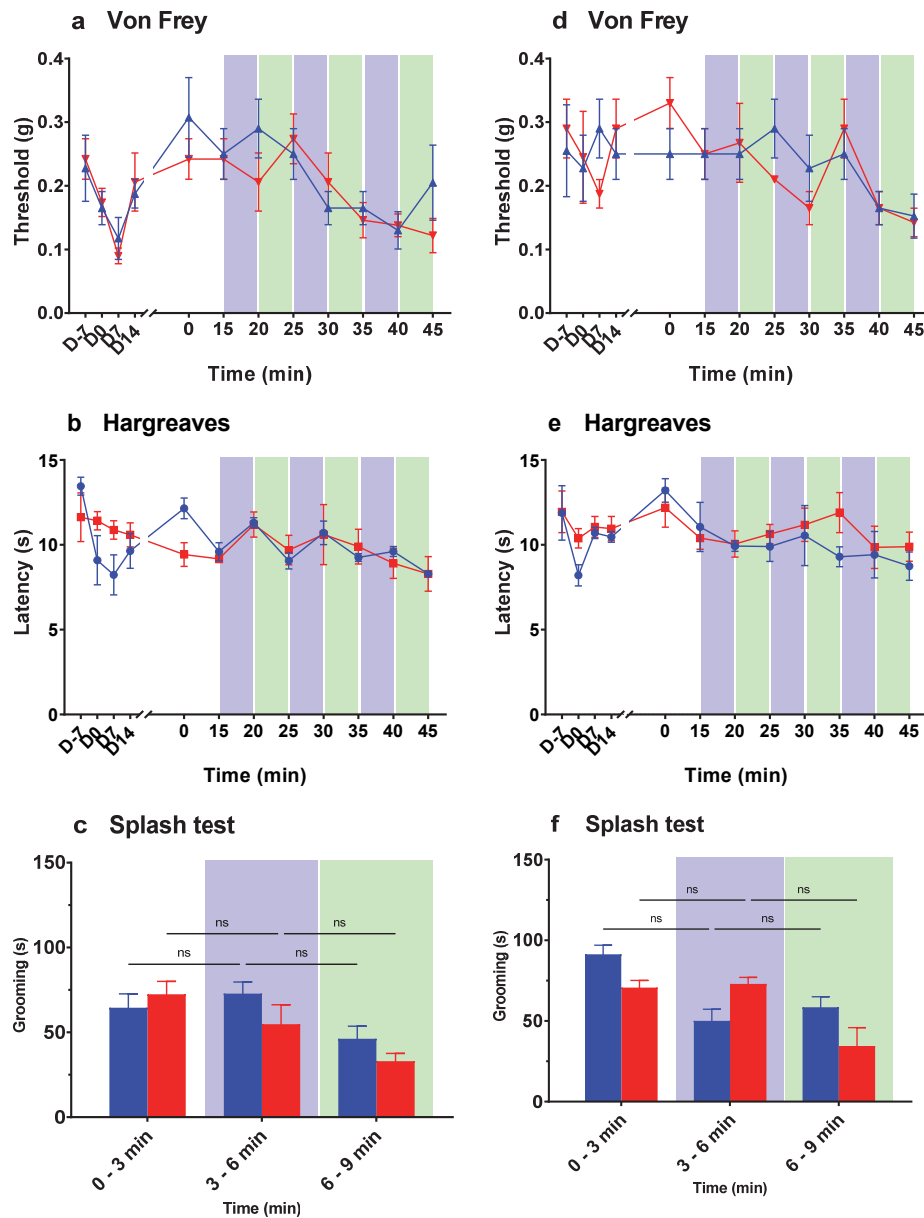
<b>Figure 1</b>	<b>Time (D<sub>0</sub> vs D<sub>14</sub>)</b>		
1b (males, VF)	F (1, 18) = 83,16; P<0,0001		
1c (males, HG)	F (1, 15) = 247,4; P<0,0001		
1d (males, ST)	F (1, 18) = 153,1; P<0,0001		
1e (fem, VF)	F (1, 15) = 64,04; P<0,0001		
1f (fem, HG)	F (1, 17) = 52,04; P<0,0001		
1g (fem, ST)	F (1, 17) = 356,4; P<0,0001		
<b>Figure 2</b>	<b>Time x LSP4-2022 (ipsi or contro)</b>	<b>Time (t<sub>0</sub> vs t<sub>x</sub>)</b>	<b>LSP4-2022 (ipsi or contro)</b>
2a (males, VF)	F (8, 128) = 11,54; P<0,0001	F (3,131, 50,10) = 74,64; P<0,0001	F (1, 16) = 15,94; P=0,0010
2b (males, HG)	F (7, 112) = 5,538; P<0,0001	F (4,015, 64,24) = 91,56; P<0,0001	F (1, 16) = 20,00; P=0,0004
2c (males, ST)	F (2, 32) = 0,7724; P=0,4703	F (1,657, 26,51) = 122,7; P<0,0001	F (1, 16) = 1,150; P=0,2995
2d (fem, VF)	F (9, 72) = 7,386; P<0,0001	F (9, 72) = 11,19; P<0,0001	F (1, 8) = 4,312; P=0,0715
2e (fem, HG)	F (9, 72) = 1,727; P=0,0983	F (3,184, 25,48) = 19,34; P<0,0001	F (1, 8) = 12,69; P=0,0074
2f (fem, ST)	F (2, 16) = 0,1997; P=0,8210	F (1,801, 14,41) = 142,0; P<0,0001	F (1, 8) = 3,354; P=0,1044
<b>Figure 3</b>	<b>Time x Vehicle (ipsi or contro)</b>	<b>Time (t<sub>0</sub> vs t<sub>x</sub>)</b>	<b>Vehicle (ipsi or contro)</b>
3a (males, VF)	F (11, 88) = 1,766; P=0,0723	F (3,557, 28,46) = 12,92; P<0,0001	F (1, 8) = 16,21; P=0,0038
3b (males, HG)	F (11, 88) = 5,563; P<0,0001	F (3,298, 26,39) = 13,24; P<0,0001	F (1, 8) = 193,5; P<0,0001
3c (males, ST)	F (2, 16) = 1,613; P=0,2301	F (1,625, 13,00) = 7,441; P=0,0094	F (1, 8) = 0,4377; P=0,5268
	<b>Time x Optogluram (ipsi or contro)</b>	<b>Time (t<sub>0</sub> vs t<sub>x</sub>)</b>	<b>Optogluram (ipsi or contro)</b>
3d (male, VF)	F (11, 88) = 3,784; P=0,0002	F (3,725, 29,80) = 11,54; P<0,0001	F (1, 8) = 12,12; P=0,0083
3e (male, HG)	F (11, 88) = 8,762; P<0,0001	F (4,181, 33,44) = 18,23; P<0,0001	F (1, 8) = 51,53; P<0,0001
3f (male, ST)	F (2, 16) = 0,2507; P=0,7813	F (1,882, 15,06) = 107,7; P<0,0001	F (1, 8) = 0,7228; P=0,4199
<b>Figure 4</b>	<b>Conditioning (Veh or optogluram)</b>		
4e,f (male, aCPP, time in violet or green area)	F (3, 36) = 4,769; P=0,0067		

### Supplemental Table 1. Summary of statistical analysis of data presented in figure panels

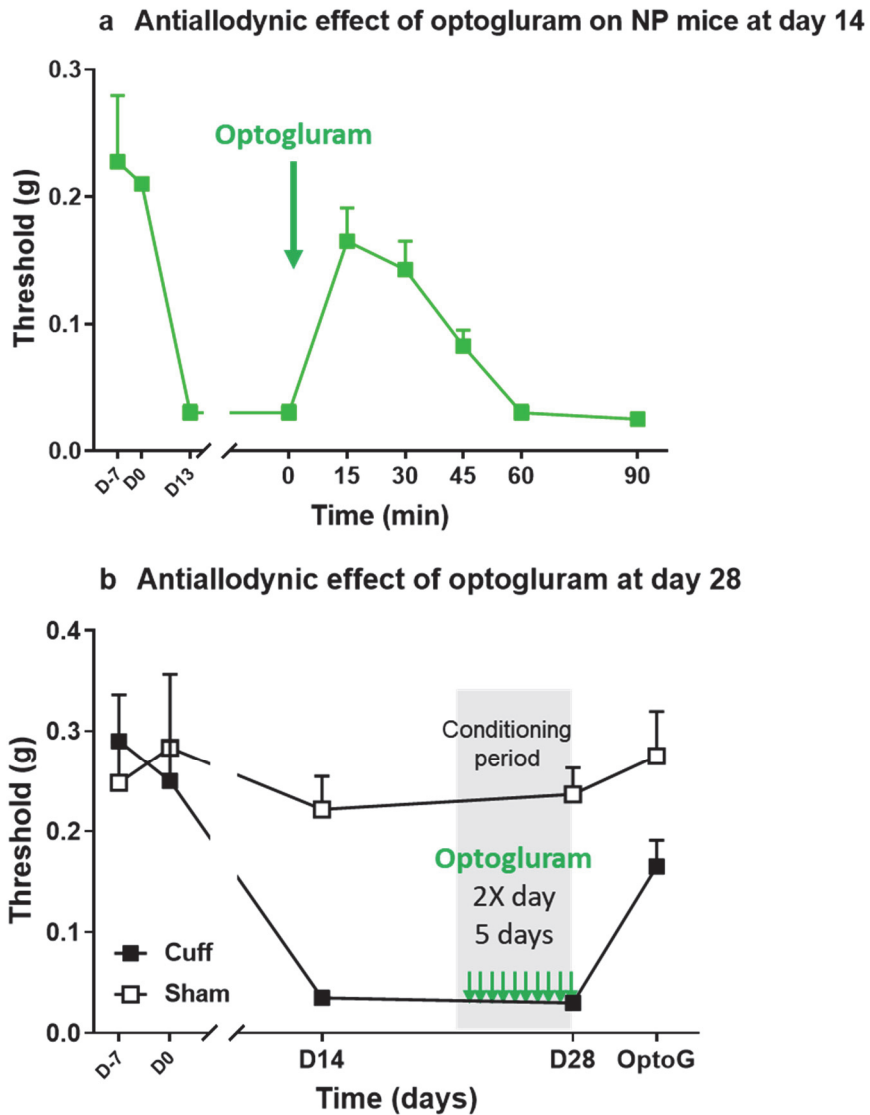
Abbreviations: fem = females; VF = Von Frey; HG = Hargreaves; ST = Splash test, aCPP = analgesic conditioned place preference



**Supplemental figure 2: mGlu4 activation in right or left amygdala does not modify mechanical sensitivity, heat sensitivity or grooming in Sham animals.** **a-f:** Females, sham left hindpaw, Vehicle (500 nL PBS, blue) or LSP4-2022 (5  $\mu$ M, 500 nL in PBS, red) delivered unilaterally in ipsi or controlateral amygdala. **a, d.** Von Frey. Mean  $\pm$  SEM,  $t_x$  vs  $t_0$  (0 min), two-way ANOVA, Dunnett's post-hoc test. **b, e.** Hargreaves. Mean  $\pm$  SEM,  $t_x$  vs  $t_0$  (0 min), two-way ANOVA, Dunnett's post-hoc test. **c, f.** Splash Test. #  $t_x$  vs  $t_0$  (0 min), two-way ANOVA, Tukey's post-hoc test.

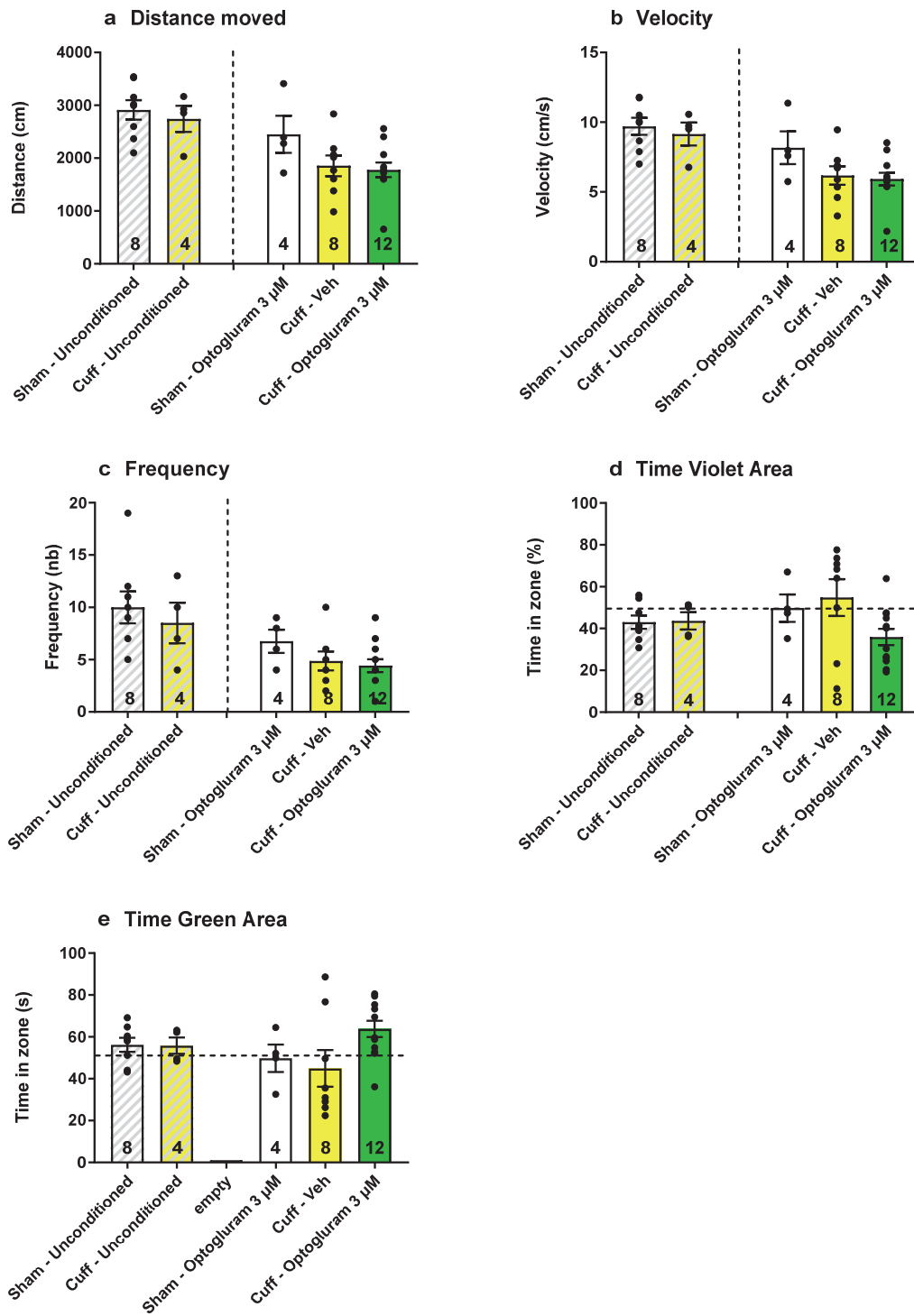


**Supplemental figure 3: Photopharmacological manipulation of mGlu4 in right or left amygdala does not modify mechanical sensitivity, thermal sensitivity or grooming in Sham animals. a-f:** Females, sham left hindpaw, Vehicle (500 nL PBS, blue) or LSP4-2022 (5  $\mu$ M, 500 nL in PBS, red) delivered unilaterally in ipsi or controlateral amygdala. **a, d.** Von Frey. Mean  $\pm$  SEM,  $t_x$  vs  $t_0$  (0 min), two-way ANOVA, Dunnett's post-hoc test. **b, e.** Hargreaves. Mean  $\pm$  SEM,  $t_x$  vs  $t_0$  (0 min), two-way ANOVA, Dunnett's post-hoc test.. **c, f.** Splash Test. #  $t_x$  vs  $t_0$  (0 min), two-way ANOVA, Tukey's post-hoc test.



**Supplemental figure 4: No tolerance following 5 days of chronic treatment (twice daily) of optogluram (30 $\mu$ M) during the conditioning period. Testing of aCPP 15 minutes following intra-amygdala injection of optogluram on day 6**

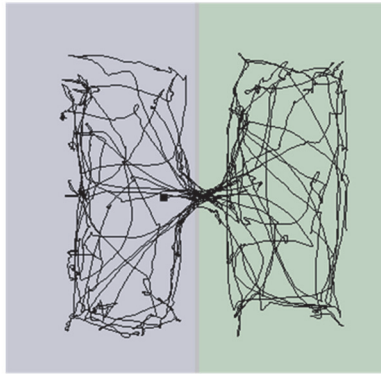




**Supplemental figure 5: aCPP: different behavioural parameters on non-conditioned and conditioned Sham or neuropathic mice**

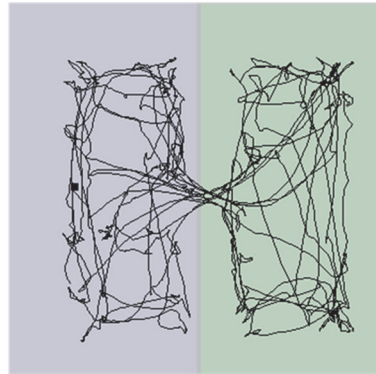
**Non conditioned:**

**a**



Sham

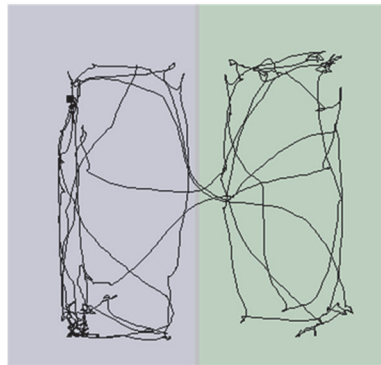
**b**



Cuff

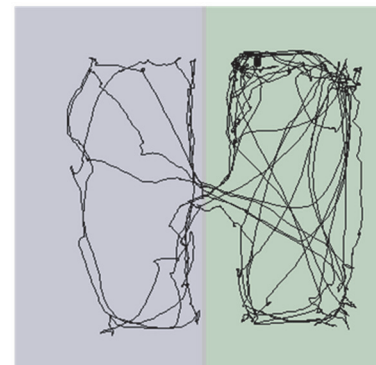
**Conditioned:**

**c**

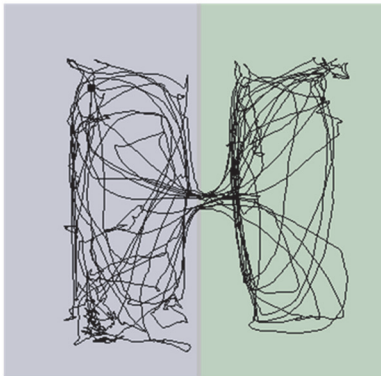


Cuff / Vehicle

**d**



Cuff / Optogluram



Sham / Optogluram

**Supplemental figure 6: aCPP: Examples of videotracks on non-conditioned and conditioned Sham or neuropathic mice**

