



HAL
open science

Non-local contribution from small scales in galaxy-galaxy lensing: Comparison of mitigation schemes

J. Prat, G. Zacharegkas, Y. Park, N. Maccrann, E.R. Switzer, S. Pandey, C. Chang, J. Blazek, R. Miquel, A. Alarcon, et al.

► To cite this version:

J. Prat, G. Zacharegkas, Y. Park, N. Maccrann, E.R. Switzer, et al.. Non-local contribution from small scales in galaxy-galaxy lensing: Comparison of mitigation schemes. *Mon.Not.Roy.Astron.Soc.*, 2023, 522 (1), pp.412-425. 10.1093/mnras/stad847 . hal-03909218

HAL Id: hal-03909218

<https://hal.science/hal-03909218v1>

Submitted on 22 Oct 2024

HAL is a multi-disciplinary open access archive for the deposit and dissemination of scientific research documents, whether they are published or not. The documents may come from teaching and research institutions in France or abroad, or from public or private research centers.

L'archive ouverte pluridisciplinaire **HAL**, est destinée au dépôt et à la diffusion de documents scientifiques de niveau recherche, publiés ou non, émanant des établissements d'enseignement et de recherche français ou étrangers, des laboratoires publics ou privés.



Distributed under a Creative Commons Attribution 4.0 International License

Non-local contribution from small scales in galaxy–galaxy lensing: comparison of mitigation schemes

J. Prat^{1,2}★, G. Zacharegkas^{1,2}★, Y. Park³, N. MacCrann⁴, E. R. Switzer⁵, S. Pandey⁶, C. Chang^{1,2}, J. Blazek⁷, R. Miquel^{8,9}, A. Alarcon¹⁰, O. Alves¹¹, A. Amon^{12,13}, F. Andrade-Oliveira¹¹, K. Bechtol¹⁴, M. R. Becker¹⁰, G. M. Bernstein⁶, R. Chen¹⁵, A. Choi¹⁶, H. Camacho^{17,18}, A. Campos¹⁹, A. Carnero Rosell^{18,20,21}, M. Carrasco Kind^{22,23}, R. Cawthon²⁴, J. Cordero²⁵, M. Crocce^{26,27}, C. Davis²⁸, J. DeRose²⁹, H. T. Diehl³⁰, S. Dodelson^{19,31}, C. Doux^{6,32}, A. Drlica-Wagner^{1,2,30}, K. Eckert⁶, T. F. Eifler^{33,34}, J. Elvin-Poole^{35,36}, S. Everett³⁴, X. Fang^{33,37}, A. Ferté³⁴, P. Fosalba^{26,27}, O. Friedrich¹³, M. Gatti⁶, G. Giannini⁹, D. Gruen³⁸, R. A. Gruendl^{22,23}, I. Harrison³⁹, W. G. Hartley⁴⁰, K. Herner³⁰, H. Huang^{33,41}, E. M. Huff³⁴, M. Jarvis⁶, E. Krause³³, N. Kuropatkin³⁰, P.-F. Leget²⁸, J. McCullough²⁸, J. Myles^{28,42,43}, A. Navarro-Alsina⁴⁴, A. Porredon^{35,36,45}, M. Raveri⁶, R. P. Rollins²⁵, A. Roodman^{28,43}, R. Rosenfeld^{18,46}, A. J. Ross³⁵, E. S. Rykoff^{28,43}, C. Sánchez⁶, J. Sanchez³⁰, L. F. Secco², I. Sevilla-Noarbe⁴⁷, E. Sheldon⁴⁸, T. Shin⁴⁹, M. A. Troxel¹⁵, I. Tutusaus^{26,27,50}, T. N. Varga^{51,52,53}, B. Yanny³⁰, B. Yin¹⁹, Y. Zhang⁵⁴, J. Zuntz⁴⁵, M. Aguena¹⁸, S. Allam³⁰, J. Annis³⁰, D. Bacon⁵⁵, E. Bertin^{56,57}, S. Bocquet³⁸, D. Brooks⁵⁸, D. L. Burke^{28,43}, J. Carretero⁹, M. Costanzi^{59,60,61}, M. E. S. Pereira⁶², J. De Vicente⁴⁷, S. Desai⁶³, I. Ferrero⁶⁴, B. Flaugher³⁰, D. W. Gerdes^{11,65}, G. Gutierrez³⁰, S. R. Hinton⁶⁶, D. L. Hollowood⁶⁷, K. Honscheid^{35,36}, D. J. James⁶⁸, M. Lima^{18,69}, F. Menanteau^{22,23}, J. Mena-Fernández⁴⁷, A. Palmese³⁷, M. Paterno³⁰, F. Paz-Chinchón^{12,22}, A. Pieres⁷⁰, A. A. Plazas Malagón⁷¹, M. Rodriguez-Monroy⁴⁷, E. Sanchez⁴⁷, M. Schubnell¹¹, M. Smith⁷², M. Soares-Santos¹¹, E. Suchyta⁷³, M. E. C. Swanson, G. Tarle¹¹, C. To³⁵, N. Weaverdyck^{11,29} and J. Weller^{52,53} (The DES Collaboration)

Affiliations are listed at the end of the paper

Accepted 2023 March 17. Received 2023 February 3; in original form 2022 December 15

ABSTRACT

Recent cosmological analyses with large-scale structure and weak lensing measurements, usually referred to as 3×2 pt, had to discard a lot of signal to noise from small scales due to our inability to accurately model non-linearities and baryonic effects. Galaxy–galaxy lensing, or the position–shear correlation between lens and source galaxies, is one of the three two-point correlation functions that are included in such analyses, usually estimated with the mean tangential shear. However, tangential shear measurements at a given angular scale θ or physical scale R carry information from all scales below that, forcing the scale cuts applied in real data to be significantly larger than the scale at which theoretical uncertainties become problematic. Recently, there have been a few independent efforts that aim to mitigate the non-locality of the galaxy–galaxy lensing signal. Here, we perform a comparison of the different methods, including the Y-transformation, the point-mass marginalization methodology, and the annular differential surface density statistic. We do the comparison at the cosmological constraints level in a combined galaxy clustering and galaxy–galaxy lensing analysis. We find that all the estimators yield equivalent cosmological results assuming a simulated Rubin Observatory Legacy Survey of Space and Time (LSST) Year 1 like set-up and also when applied to DES Y3 data. With the LSST Y1 set-up, we find that the mitigation schemes yield ~ 1.3 times more constraining S_8 results than applying larger scale cuts without using any mitigation scheme.

Key words: gravitational lensing: weak – cosmological parameters – large-scale structure of Universe – cosmology: theory.

* E-mail: jprat@astro.uchicago.edu (JP); gzacharegkas@uchicago.edu (GZ)

1 INTRODUCTION

When the light of background (*source*) galaxies passes close to foreground (*lens* or *tracer*) galaxies it gets perturbed, distorting the image of the source galaxies we observe. Galaxy–galaxy lensing refers to the cross-correlation between source galaxy shapes and lens galaxy positions. The amount of distortion is correlated with the properties of the lens sample and the underlying large-scale structure it traces. In the case of a spherical distribution of matter, the shear at any point will be oriented tangentially to the direction towards the centre of symmetry. Then, the tangential component of the shear will capture all the gravitational lensing signal produced by a spherically symmetric distribution of mass. Because of this, the *tangential shear* averaged over many source–lens galaxy pairs is one of the typical measurements that is done to detect this correlation.

Galaxy–galaxy lensing has had a wide range of applications since it was first detected in Brainerd, Blandford & Smail (1996). It has been extensively used to probe the galaxy–matter connection at small scales, e.g. Choi et al. (2012), Yoo & Seljak (2012), Kuijken et al. (2015), Clampitt et al. (2017), Park et al. (2016), Zacharegkas et al. (2022), or Luo et al. (2022); to extract cosmological information using the well-understood large scales in combination with other probes such as galaxy clustering and/or CMB lensing as in Mandelbaum et al. (2013), Baxter et al. (2016), Joudaki et al. (2018), van Uitert et al. (2018), Prat et al. (2018, 2022), Singh et al. (2020), Lee et al. (2022); to obtain lensing shear geometric constraints e.g. Jain & Taylor (2003), Prat et al. (2019), Hildebrandt et al. (2020), Giblin et al. (2021), Sánchez et al. (2022); and also recently in Leauthaud et al. (2022) to assess the consistency of lensing across different data sets and to carry out end-to-end tests of systematic errors.

Moreover, galaxy–galaxy lensing is a standard part of the so-called 3×2 pt analyses that combine large-scale structure and weak lensing measurements to extract cosmological information. The 3×2 pt stands for the combination of three two-point correlation functions: the autocorrelation of the positions of galaxies (galaxy clustering), the cross-correlation of galaxy shapes and galaxy positions (galaxy–galaxy lensing), and the autocorrelation of galaxy shapes (cosmic shear). This combination was originally proposed in Hu & Jain (2004), followed by Bernstein (2009) and Joachimi & Bridle (2010) and has since then been applied to different galaxy survey data sets, such as to KiDS data, as in Heymans et al. (2021), and to DES data, e.g. in Abbott et al. (2022).

These kind of analyses commonly use the well-understood large scales, placing stringent scale cuts to remove the parts of the data vector that currently add too much uncertainty in the model due to non-linearities in the matter power spectrum, galaxy bias, and baryonic effects, amongst others (e.g. Krause et al. 2021). However, the galaxy–galaxy lensing signal is non-local in nature, that is, the predicted signal at a given separation between a source and a lens galaxy (at the redshift of the lens galaxy) depends on the modelling of all scales within that separation, including the non-linear small scales. This can be appreciated expressing the tangential shear of a single lens–source galaxy pair separated by an angular distance θ as a function of the excess surface mass density $\Delta\Sigma$:

$$\gamma_t(\theta, z_l, z_s) = \frac{\Delta\Sigma(\theta)}{\Sigma_{\text{crit}}(z_l, z_s)}, \quad (1)$$

where $\Delta\Sigma$ can be expanded as the difference between the mean surface mass density *below* a certain angular scale ($<\theta$) and the surface mass density *at* this given scale θ :

$$\Delta\Sigma(\theta) = \overline{\Sigma}(<\theta) - \Sigma(\theta), \quad (2)$$

where the non-locality of the tangential shear quantity becomes apparent, since the tangential shear defined at some θ value will always carry information of all the scales below this value. Σ_{crit} is just a geometrical factor that depends on the angular diameter distances to the lens galaxy D_l , the one between the lens and the source D_{ls} , and the one to the source galaxy D_s , and is defined as

$$\Sigma_{\text{crit}}^{-1}(z_l, z_s) = \frac{4\pi G}{c^2} \frac{D_{ls} D_l}{D_s} \quad \text{if } z_s > z_l, \quad (3)$$

and zero otherwise. In the equation above G is the gravitational constant and c is the speed of light.

Therefore, our inability to model the small scales accurately enough given the measurement uncertainties impacts the lensing signal at all scales. Expanding on this, in order to predict the lensing signal, an accurate prediction for the galaxy–matter correlation function $\xi_{\text{gm}}(r)$ is required for some range of physical (3D) scales r , see e.g. MacCrann et al. (2020). At large scales, we expect linear theory to hold and thus we can relate the galaxy–matter correlation function with the matter correlation through a linear galaxy bias factor: $\xi_{\text{gm}}(r) = b\xi_{\text{mm}}$, see Desjacques, Jeong & Schmidt (2018) for a galaxy bias review. At smaller (non-linear) scales, we do not currently have a precise theory to model $\xi_{\text{gm}}(r)$. Therefore, it is crucial to ensure that the tangential shear measurement is only sensitive to scales in $\xi_{\text{gm}}(r)$ where we know that the modelling is sufficiently accurate. Since the galaxy–galaxy signal receives a non-local contribution that depends on scales in $\xi_{\text{gm}}(r)$ that are much smaller than the separation at which the measurement is made (i.e. the impact parameter in the lens redshift), this non-locality can then force the scale cuts applied in real data to be significantly larger than the scale at which theoretical uncertainties become problematic. For example, due to this reason, the scale cuts in the DES Y1 3×2 pt cosmological analysis (Abbott et al. 2018) were higher for the galaxy–galaxy lensing part (12 $\text{Mpc } h^{-1}$) than for the galaxy clustering part (8 $\text{Mpc } h^{-1}$).

To help with this issue, there have been a few independent efforts to mitigate the non-locality of the galaxy–galaxy lensing signal. The first that was proposed was the annular differential surface density estimator by Baldauf et al. (2010), which consists of modifying the data vector on all scales in a way that removes information about the lens mass distribution below a chosen scale R_0 , based on the measured data vector around R_0 . Later on, MacCrann et al. (2020) proposed a methodology to take into account the non-locality by analytically marginalizing over an enclosed point mass (PM) directly when performing the cosmological parameters inference. Finally another estimator-based methodology was proposed by Park, Rozo & Krause (2021), which achieves the localization of the galaxy–galaxy lensing signal by performing a linear transformation of the tangential shear quantity. In the recent DES Y3 3×2 pt work (Abbott et al. 2022), the PM marginalization methodology was applied to remove the information from small scales above a certain scale, which resulted in being able to model the galaxy–galaxy lensing until 6 $\text{Mpc } h^{-1}$, a much smaller scale cut than the one used in DES Y1 of 12 $\text{Mpc } h^{-1}$, even with smaller measurement uncertainties, while the galaxy clustering scale remained the same as in the Y1 analysis (8 $\text{Mpc } h^{-1}$).

In this paper, we perform a thorough comparison of these different proposals with the main goal of understanding which of them is advantageous to use in future cosmological analyses. First, we use simulated data vectors with uncertainties mimicking the LSST Y1 settings to perform such a comparison and then apply it to DES Y3 data.

2 THEORY

Equation(2) can be rewritten as a function of physical scale $R = \theta D_l$ in the small angle approximation as

$$\Delta\Sigma(R) = \bar{\Sigma}(0, R) - \Sigma(R). \quad (4)$$

Then, expanding each of the terms, the surface density at a given transverse R scale between the lens galaxy and the source light can be expressed as the integral of the three-dimensional galaxy–matter correlation function $\xi_{gm}(r)$ over the line-of-sight distance Π , with $r = \sqrt{\Pi^2 + R^2}$:

$$\Sigma(R) = \bar{\rho}_m \int_{-\infty}^{\infty} d\Pi \left[1 + \xi_{gm} \left(\sqrt{\Pi^2 + R^2} \right) \right], \quad (5)$$

where $\bar{\rho}_m$ is the mean matter density. The other term in equation (4) is the mean surface density between two transverse positions, which can be generally expressed as

$$\bar{\Sigma}(R_1, R_2) = \frac{2}{R_2^2 - R_1^2} \int_{R_1}^{R_2} \Sigma(R') R' dR'. \quad (6)$$

For $R_1 = 0$ and $R_2 = R$, it simplifies to

$$\bar{\Sigma}(0, R) = \frac{2}{R^2} \int_0^R \Sigma(R') R' dR'. \quad (7)$$

This term is the one containing the information from all scales down to $R = 0$, including the one halo regime for which we do not have an accurate model for ξ_{gm} . Assuming we can model ξ_{gm} accurately only down to some minimum scale r_{\min} , we do not want $\Delta\Sigma(R)$ to depend on ξ_{gm} below r_{\min} . From the equation above it becomes clear that $\bar{\Sigma}(0, R)$, and thus $\Delta\Sigma(R)$, are only sensitive to the *total* mass enclosed inside R (i.e. to some integral of ξ_{gm}), but not to how the mass is distributed (i.e. to the shape of ξ_{gm}). For instance, $\Delta\Sigma$ at scales larger than R will be the same for a PM distribution as for an NFW profile. Also, as shown by equation (7), the contribution from the total enclosed mass will scale as $1/R^2$. This is the key fact that all the estimators described below rely on to remove the dependence of the enclosed mass (or non-locality) of the galaxy–galaxy lensing measurements. Below we summarize each of these currently existing methodologies. We also visualize the modified data vectors for each of the methodologies in Fig. 1.

2.1 Annular differential surface density Υ

The annular differential surface density statistic, $\Upsilon(R)$, is defined in the following way (Baldauf et al. 2010):

$$\Upsilon(R; R_0) \equiv \Delta\Sigma(R) - \frac{R_0^2}{R^2} \Delta\Sigma(R_0) \quad (8)$$

$$= \frac{2}{R^2} \int_{R_0}^R dR' R' \Sigma(R') - \frac{1}{R^2} [R^2 \Sigma(R) - R_0^2 \Sigma(R_0)]. \quad (9)$$

From the integration limits it is clear this estimator does not include information from scales below R_0 , because $\Delta\Sigma(R_0)$ contains the same small-scale contribution as $\Delta\Sigma(R)$, just rescaled by R^2/R_0^2 . The second line follows from the first one by substituting $\Delta\Sigma(R) = \bar{\Sigma}(0, R) - \Sigma(R)$ and using the definition

$$\bar{\Sigma}(R_1, R_2) = \frac{2}{R_2^2 - R_1^2} \int_{R_1}^{R_2} dR' R' \Sigma(R'). \quad (10)$$

In this estimator and in the ones below that also involve a transformation of the data vector, the model is transformed in the same way as the measurements. Moreover, the annular differential surface density

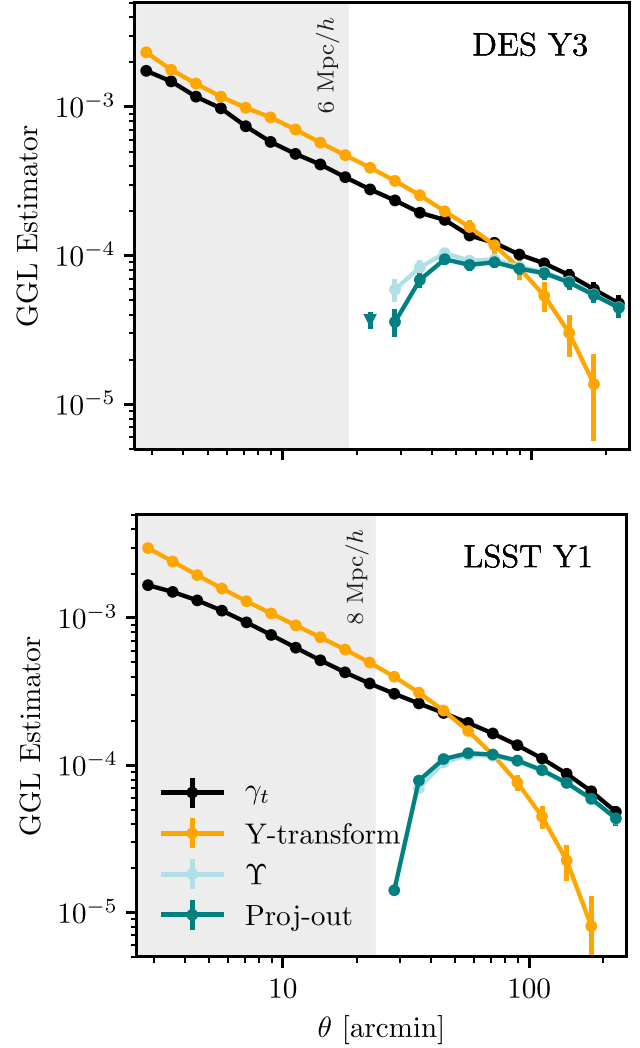


Figure 1. Visualization of the data vectors for each of the galaxy–galaxy lensing (GGL) estimators that we compare in this paper to localize the original tangential shear measurements (γ_t), corresponding to the second lens redshift bin and the highest source bin. We do not add the PM marginalization case since it does not involve a modification of the data vector, only of the (inverse) covariance. The triangle point for the proj-out case represents a negative point.

statistic can be equivalently defined for the tangential shear quantity using angular scales:

$$\Upsilon_{\gamma_t}(\theta; \theta_0) \equiv \gamma_t(\theta) - \frac{\theta_0^2}{\theta^2} \gamma_t(\theta_0), \quad (11)$$

using the small-angle approximation to go from R to θ . In realistic scenarios, where each lens tomographic bin has a non-negligible width, a given value θ_0 will mix a range of physical scales R_0 . In this work, we use the annular differential surface density statistic based on the tangential shear quantity throughout the paper (instead of the $\Delta\Sigma$ one), and use θ_0 cuts computed with the mean z_l for each redshift bin, given a specified R_0 cut. In this paper, we use values for R_0 of 6 and of $8 \text{ Mpc } h^{-1}$, depending on the data set and its constraining power.

The covariance of Υ will also generally need to be modified. Given that we can write the transformation as $\Upsilon = \gamma_t - X$, with X being a constant, then $\text{Var}[\Upsilon] = \text{Var}[\gamma_t] + \text{Var}[X] - \text{cov}[\gamma_t, X]$. In the case that X is noiseless, the covariance of Υ will be identical to the γ_t

one. In our implementation, we always modify the covariance of the Υ statistic to include the noise of $\gamma_t(\theta_0)$.

2.2 Y-transform

The Y -transformation derived in Park et al. (2021) is a localizing linear transformation that utilizes the local quantity $\Sigma(R)$ underlying the galaxy–galaxy lensing observable $\Delta\Sigma(R)$. By inverting the $\Delta\Sigma(R)$ – $\Sigma(R)$ relationship, the Y quantity defined as

$$Y(R) \equiv \Sigma(R) - \Sigma(R_{\max}) = \int_R^{R_{\max}} d \ln R' \left[2\Delta\Sigma(R') + \frac{d\Delta\Sigma(R')}{d \ln R'} \right] \quad (12)$$

recovers the local $\Sigma(R)$ up to an overall additive constant $\Sigma(R_{\max})$. To treat the discretized observables most frequently used in real analyses, this relation is also discretized to a linear transform given by

$$\mathbf{Y} = (2\mathbf{S} + \mathbf{SD}) \Delta\Sigma = \mathbf{T}\Delta\Sigma, \quad (13)$$

where the trapezoidal summation matrix \mathbf{S} representing the log integral and the finite differences matrix \mathbf{D} representing the log differentiation are used to define the final transformation matrix \mathbf{T} . The linear format of this transformation allows a further direct application to a γ_t vector, as γ_t is proportional to $\Delta\Sigma$. Thus, by transforming an observed galaxy–galaxy lensing vector $\boldsymbol{\gamma}_t$ and its covariance \mathbf{C}_{γ} as

$$\mathbf{Y}_{\gamma} = \mathbf{T}\boldsymbol{\gamma}_t, \quad (14)$$

$$\mathbf{C}_{Y_{\gamma}} = \mathbf{T}\mathbf{C}_{\gamma}\mathbf{T}^T, \quad (15)$$

we achieve a likelihood analysis with a localized galaxy–galaxy lensing observable. It is notable that the \mathbf{T} matrix nulls out components in $\Delta\Sigma(\boldsymbol{\gamma}_t)$ proportional to $1/R^2$ ($1/\theta^2$), which can also be seen from equation (12) when a term proportional to $1/R^2$ is added to $\Delta\Sigma(R)$. Another way to see this is that if $\Delta\Sigma(R)$ has a $1/R^2$ shape, the integral from equation (12) vanishes. Note that this is also true for the Υ statistic of Section 2.1, i.e. adding a term proportional to $1/\theta^2$ makes no difference to the estimator (see equation 11).

2.3 Point-mass marginalization

MacCrann et al. (2020) proposed to analytically marginalize over the contribution from within the small-scale cut by treating it as a PM contribution scaling as $1/R^2$. This PM term can be expressed as an addition to the tangential shear model for a given lens redshift bin i and source redshift bin j :

$$\gamma_t^{ij}(\theta) = \gamma_{t,\text{model}}^{ij}(\theta) + \frac{A^{ij}}{\theta^2}, \quad (16)$$

where we use the small-angle approximation to go from R to θ . Here, the $\gamma_{t,\text{model}}^{ij}$ is a prediction based on a model for the 3D galaxy–matter correlation function $\xi_{\text{gm}}(r)$ that is correct for scales $r > r_{\min}$, but can be arbitrarily wrong for $r < r_{\min}$, and A^{ij} is some unknown constant that we can marginalize over. The simple form of this contamination model makes it suitable for an analytic marginalization approach given that the scale dependence is not dependent on cosmology or the lens galaxy properties. We want to marginalize $P(\gamma_{t,\text{obs}}(\theta)|\gamma_{t,\text{model}}(\theta), A)$ over the unknown constant A in order to obtain the likelihood we are interested in, namely:

$$P(\gamma_{t,\text{obs}}(\theta)|\gamma_{t,\text{model}}(\theta)) = \int dA P(A)P(\gamma_{t,\text{obs}}(\theta)|\gamma_{t,\text{model}}(\theta), A). \quad (17)$$

In the case that the $\gamma_{t,\text{model}}$ is Gaussian distributed with covariance matrix \mathbf{C}_{γ} , and we have a Gaussian prior on A with mean zero and width σ_A , one can show that (Bridle et al. 2002) $P(\gamma_{t,\text{obs}}(\theta)|\gamma_{t,\text{model}}(\theta))$ is also Gaussian distributed with a covariance matrix

$$\mathbf{N} = \mathbf{C}_{\gamma} + \sigma_A^2 \bar{\mathbf{x}}\bar{\mathbf{x}}^T, \quad (18)$$

where $\bar{\mathbf{x}}$ has elements $x_n = (\theta_{\min}/\theta_n)^2$, and θ_{\min} represents the scale cut. This means that in order to marginalize over the free parameter A , we only need to add this term to the original covariance rather than explicitly sampling over possible values of A in e.g. an MCMC chain. In this work, we use an infinite prior for σ_A . In this case, the extra term is added to the inverse covariance directly, following the procedure described in MacCrann et al. (2020) and in Prat et al. (2022).

2.3.1 Point-mass marginalization using geometric information

The amplitudes A^{ij} can be written as

$$A^{ij} = \int dz_l \int dz_s n_l^i(z) n_s^j(z) B^i(z_l) \Sigma_{\text{crit}}^{-1}(z_l, z_s) D^{-2}(z_l),$$

where B^i represents the total mass enclosed within θ_{\min} for the i -th lens bin, $n_l^i(z)$ is the redshift distribution of each lens bin, $n_s^j(z)$ for each source bin, and $D(z_l)$ is the angular diameter distance to the lens redshift z_l . If we assume that B^i evolves slowly across the width of the lens bins we can drop the z_l dependence and define the parameters β_{ij} in the following way:

$$A^{ij} \approx B^i \int dz_l \int dz_s n_l^i(z) n_s^j(z) \Sigma_{\text{crit}}^{-1}(z_l, z_s) D^{-2}(z_l) \equiv B^i \beta_{ij}.$$

The parameters β_{ij} are purely geometrical (sometimes also called shear-ratio information), and thus can be exactly computed analytically given the input redshift distributions.¹ Then, the predicted β_{ij} factors can be used to reduce freedom in the model by fixing the relative scales between the source bins sharing the same lens bin and only marginalizing over B^i instead of over a free-form A^{ij} .

We label this variant of the model as ‘PM (free per z_l^j)’, since in this case there is only one free parameter per lens bin. When this approximation is not used (i.e. only using equation 16) we label the model as ‘PM (free per $z_l^i - z_l^j$)’. In the DES Y3 analysis, where the point-marginalization was used, the variant of the model using geometrical information was employed. In this paper, we also explore the differences, advantages, and caveats of these two variants of the PM marginalization method.

2.4 Mode projection: ‘project-out’ estimator

To further illustrate the similarities and/or differences among the above estimators, we also construct a new estimator that we refer to as the ‘project-out’ estimator. This estimator is designed such that it follows the philosophy of the MacCrann et al. (2020) approach, namely by focusing on the PM $1/R^2$ mode within the observed galaxy–galaxy lensing data vector, while it follows the implementation used in Park et al. (2021), namely by finding a suitable linear transformation and

¹Note that since the second term of the RHS of equation (16) only accounts for the unmodelled enclosed mass caused by the mismodelling of the halo–matter correlation function, other effects such as IA or magnification would be a part of the first term of the RHS of equation (16), and thus do not need to be included in the computation of the β_{ij} factors.

using it to transform the data vectors and covariances. In Appendix A, we show that the ‘proj-out’ method is actually equivalent to the PM marginalization method when the prior of the PM is infinitely wide. Also, this basic equivalence between marginalizing over a parameter and projecting out a given mode had already been pointed out in Appendix A from Seljak (1998) for a general scenario.

The core idea behind this estimator, thus, is to identify the projection of the observed galaxy–galaxy lensing data vector on to the $1/R^2$ mode, and then to remove it from the original vector. The projection operator \mathbf{P} is given by (Aitken 1936; Tegmark et al. 1998)

$$\mathbf{P} = \mathbf{A} (\mathbf{A}^T \mathbf{C}_\gamma^{-1} \mathbf{A})^{-1} \mathbf{A}^T \mathbf{C}_\gamma^{-1}, \quad (19)$$

where \mathbf{A} has columns spanning the subspace on to which we wish to project. In our case, \mathbf{A} has only one column given by $\{1/R_i^2\}$, or in practice $\{1/\theta_i^2\}$, with θ_i being the representative angular separation of the i -th bin in our data vector. Note that instead of the ‘vanilla’ projection operator $\mathbf{A}(\mathbf{A}^T \mathbf{A})^{-1} \mathbf{A}^T$, we use the generalized least-squares definition of the projection operator to properly account for the covariances in the data vector.

The ‘cleaned’ data vector is then defined as

$$\begin{aligned} \gamma_{t,\text{proj-out}} &= \gamma_t - \mathbf{P} \gamma_t \\ &= \left[\mathbf{I} - \mathbf{A} (\mathbf{A}^T \mathbf{C}_\gamma^{-1} \mathbf{A})^{-1} \mathbf{A}^T \mathbf{C}_\gamma^{-1} \right] \gamma_t \\ &\equiv \mathbf{M} \gamma_t, \end{aligned} \quad (20)$$

and its covariance is given by

$$\mathbf{C}_{\text{proj-out}} = \mathbf{M} \mathbf{C}_\gamma \mathbf{M}^T, \quad (21)$$

where \mathbf{C}_γ is the original covariance matrix. The inversion of $\mathbf{C}_{\text{proj-out}}$ becomes problematic, as \mathbf{M} is not a full-rank matrix. We thus follow Tegmark (1997) to define a pseudo-inverse of the transformed covariance matrix as

$$\tilde{\mathbf{C}}_{\text{proj-out}}^{-1} = \mathbf{M} (\mathbf{C}_{\text{proj-out}} + \eta \mathbf{A} \mathbf{A}^T)^{-1} \mathbf{M}^T, \quad (22)$$

where η is a constant whose value does not affect the performance of the pseudo-inverse.² This can be understood intuitively as adding back in the lost mode to $\mathbf{C}_{\text{proj-out}}$, inverting, and removing the added mode at the end. With $\gamma_{t,\text{proj-out}}$ and $\tilde{\mathbf{C}}_{\text{proj-out}}$ in hand, a full likelihood analysis can be defined using this new estimator.

3 METHODOLOGY

The question we are aiming to answer is whether the different methodologies to localize the galaxy–galaxy lensing measurements are consistent under the precision of current and future surveys. In order to do so, we perform a combined 2×2 pt analysis using each of the methods to localize the tangential shear measurements and compare their performances at the cosmological posterior level. We choose to do the comparison in a 2×2 pt analysis instead of a whole 3×2 pt analysis to maximize the impact that the galaxy–galaxy lensing part of the data vector has on the cosmological parameter posteriors, thus maximizing potential differences between the localizing estimators. We perform the comparison using two different set-ups: (1) First, we assume the characteristics of a future survey to test the differences under the smallest covariance. In particular, we choose the specifications of a LSST Y1-like survey, since that will become relevant in the near-future, and it will already be significantly more constraining than current generation surveys.

²We have used $\eta = 10^{-3}$ for the runs with DES Y3 data. We have checked that using a different value, e.g. $\eta = 10^3$, does not change the results.

(2) Secondly, we apply the comparison of the methods to DES Y3 data, a noisy realistic scenario.

For the LSST Y1 simulated case, we generate the input data vectors using a *contaminated* model that includes baryonic effects and non-linear galaxy bias contributions that mostly affect small scales (see Section 3.2), and analyse it using the simpler *fiducial* model that does not take into account these contributions with a linear galaxy bias model and a dark matter only power spectrum (see Section 3.1). We find the appropriate set of scale cuts that allow us to recover unbiased cosmology in each case following the prescription described in Section 3.3.

3.1 Fiducial model

Here, we summarize the baseline or ‘fiducial’ theory that we will use to model the observed tangential shear and galaxy clustering quantities. This is the same one used in the DES Y3 3×2 pt analysis. In particular, for the LSST Y1 simulated analysis described below we assume the model presented in more detail in Krause et al. (2021) and for the DES Y3 data analysis the one defined in Abbott et al. (2022).³

The tangential shear γ_t and angular clustering $w(\theta)$ observables can be expressed as various real space projections of angular power spectra. In particular, we model γ_t as the following curved sky projection of the galaxy–matter angular power spectra and of other terms that encapsulate observational effects such as intrinsic alignments, lens magnification and their cross-talk, which add up to the total observed $C_{\delta_{\text{obs } E}}^{ij}$:

$$\gamma_t^{ij}(\theta) = \sum_{\ell} \frac{2\ell + 1}{4\pi \ell(\ell + 1)} P_{\ell}^2(\cos \theta) C_{\delta_{\text{obs } E}}^{ij}, \quad (23)$$

and we model $w(\theta)$ as

$$w^{ij}(\theta) = \sum_{\ell} \frac{2\ell + 1}{4\pi} P_{\ell}(\cos \theta) C_{\delta_{\text{obs } \delta_{\text{obs}}}}^{ij}. \quad (24)$$

We refer the reader to Krause et al. (2021) for a detailed definition of $C_{\delta_{\text{obs } E}}^{ij}$ and of $C_{\delta_{\text{obs } \delta_{\text{obs}}}}^{ij}$. P_{ℓ} and P_{ℓ}^2 are the Legendre polynomials and the associated Legendre polynomials, respectively. For the matter power spectrum, we use the dark matter only Halofit prescription from Takahashi et al. (2012) and assume a linear galaxy bias to relate the galaxy and matter density fluctuations.

We obtain the LSST Y1 covariances with the publicly available COSMOCOV code (Krause & Eifler 2017; Fang, Eifler & Krause 2020), using the number densities and noise specified in Table 1. We include Gaussian and non-Gaussian terms computed using a halo model. We assume an area of $12\,300 \text{ deg}^2$ for LSST Y1, consistently with the specifications from The LSST Dark Energy Science Collaboration (2018).

We use a Λ CDM model with 5 (6) free cosmological parameters for the simulated (data) case: $\Omega_m, A_s, n_s, \Omega_b, h, (\Omega_\nu)$. We also free additional nuisance parameters to marginalize over uncertainties related to photometric redshifts – both for the lens and source samples, intrinsic alignments, and shear calibration. The full list of free parameters and their respective priors can be found in table II⁴

³The two models are in essence identical, but differ in some of the input parameters such as the lens magnification parameters and the redshift distributions (which were measured later in the data analysis), and in the priors of the nuisance parameters.

⁴The only difference between the values that we use and the ones from table II from Krause et al. (2021) is that we fix the neutrino density parameter Ω_ν/h^2

Table 1. LSST Y1 lens and source sample specifications in the set-up of this work. The listed shape noise is the total one including both ellipticity components. These values are taken from The LSST Dark Energy Science Collaboration (2018), which specifies a lens number density of 18 arcmin^{-2} , which we split in five redshift bins, and a source number density of 10 arcmin^{-2} which we split in four redshift bins.

LSST Y1	
Lens sample	
Number density (arcmin^{-2})	(2.29, 3.97, 6.06, 3.07, 2.62)
Galaxy bias	(1.7, 1.7, 1.7, 2.0, 2.0)
Source sample	
Number density (arcmin^{-2})	(2.50, 2.50, 2.52, 2.48)
Total shape noise	0.3677

from Krause et al. (2021) for the simulated analysis and in table I from Abbott et al. (2022) for the DES Y3 data analysis. For the simulated LSST Y1 analysis, we assume the same redshift distributions that were used in the methodology paper of the DES Y3 analysis (Krause et al. 2021), which are an early estimate of the DES Y3 redshift distributions.⁵ For the DES Y3 data chains, we use the same settings and priors as in Abbott et al. (2022), except that we do not include the shear-ratio likelihood and only combine the tangential shear and galaxy clustering measurements, since for the 2×2 pt case it does not significantly change the results (Sánchez et al. 2022).

We use the COSMOSIS (Zuntz et al. 2015) framework to generate the data vectors and perform the 2×2 pt analysis. We use MULTINEST (Feroz & Hobson 2008; Feroz, Hobson & Bridges 2009; Feroz et al. 2019) to sample the parameter space and obtain the parameter posteriors, with the following accuracy settings: `live_points = 500`, `efficiency = 0.3`, `tolerance = 0.01`, `constant_efficiency = F`. For the DES Y3 data, we use POLYCHORD with the same high-accuracy settings used in Abbott et al. (2022).

3.2 Contaminated input model

The baryonic contamination is obtained by rescaling the non-linear matter power spectrum with the baryonic effects from OWLS (OverWhelmingly Large Simulations project; Schaye et al. 2010; van Daalen et al. 2011) as a function of redshift and scale, comparing the power spectrum from the dark matter-only simulation with the power spectrum from the OWLS AGN simulation, following Krause et al. (2021). For the non-linear galaxy bias contamination, we utilize a model that has been calibrated using N -body simulations and is described in Pandey et al. (2020, 2022). Overall we use the same procedure which is used in Krause et al. (2021) to contaminate the fiducial data vector with these effects. Note that while the scale cuts and constraining power for each set-up will depend on these choices

to a null value. This is because COSMOCOV is not able to generate a model for the covariance that takes into account neutrinos. However, as shown in fig. 2 from Krause et al. (2021), the impact of marginalizing over neutrino density is small for the DES Y3 3×2 pt analysis, so we do not expect this choice to affect any of the conclusions of this work.

⁵LSST is expected to use a different redshift binning with respect to the one we choose in this work. However, since we are matching the rest of the settings to Krause et al. (2021) we decided to also match the input redshift distributions for simplicity, also given the fact that the redshift distributions that we assume in this work have a comparable binning and redshift range than the one predicted in The LSST Dark Energy Science Collaboration (2018) for the LSST Y1 sample.

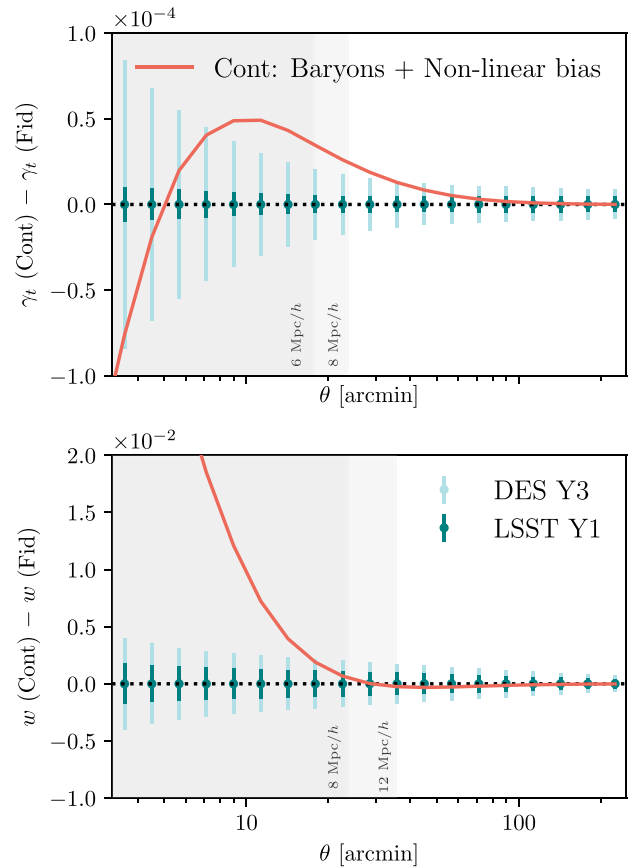


Figure 2. Difference between the contaminated data vector and the fiducial ones for the tangential shear (top) and angular clustering (bottom), for the redshift bin combination corresponding to the second lens bin and the highest source bin. This redshift bin combination corresponds to one of the higher S/N ones. Green error bars represent the uncertainties for DES Y3 and LSST Y1. The grey regions mark the scale cuts that are needed to obtain unbiased cosmological results from this contamination, which have been determined to be $w > 8 \text{ Mpc } h^{-1}$ and $\gamma_t > 6 \text{ Mpc } h^{-1}$ for DES Y3 and $w > 12 \text{ Mpc } h^{-1}$ and $\gamma_t > 8 \text{ Mpc } h^{-1}$ for LSST Y1 when using one of the methods to localize the tangential shear measurements (otherwise the scale cuts would need to be larger for the tangential shear quantity, as shown in Appendix C).

(both on the contaminated and fiducial model), the comparison of the estimators will be independent of it since we use the same input contamination for all the different localization methodologies.

We generate both the fiducial and contaminated data vectors at the same cosmological and nuisance parameters that were used to define the scale cuts in the DES Y3 3×2 pt cosmological analysis. In Fig. 2, we display the differences between the contaminated and fiducial data vectors for the tangential shear in the top and angular galaxy clustering in the bottom.

3.3 Procedure to obtain the scale cuts

Here, we describe how we obtain the scale cuts that we can use for LSST Y1 that yield unbiased cosmological results given our input contamination data vectors. We compute the differences of the posteriors in the $2\text{D } S_8 - \Omega_m$ plane between results using either the fiducial or the contaminated input data vectors. Specifically, we use the maximum a posteriori point (MAP) to compute the 2D offsets. We choose to use the ‘PM (free per z_i^j)’ model to perform this

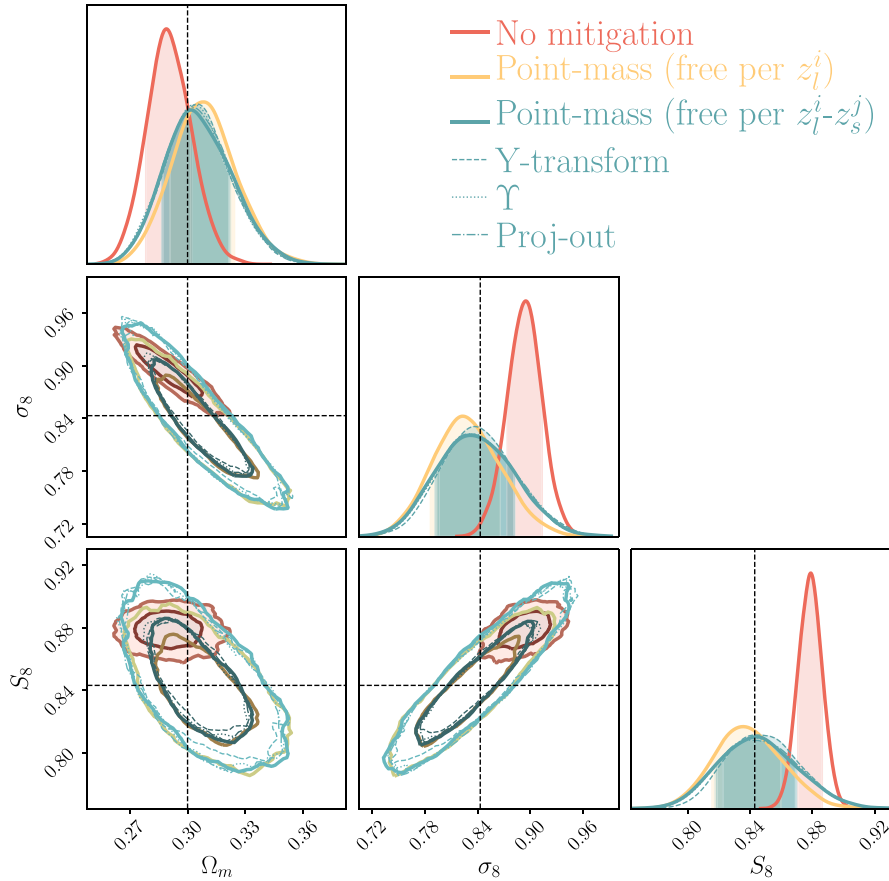


Figure 3. Cosmological parameter posteriors obtained from an input galaxy clustering and galaxy–galaxy lensing data vector (2×2 pt) with non-linear bias and baryonic contamination, LSST Y1 covariance, $8 \text{ Mpc } h^{-1}$ scale cuts for galaxy–galaxy lensing and $12 \text{ Mpc } h^{-1}$ for galaxy clustering. This figure demonstrates that all the methodologies to localize the galaxy–galaxy lensing measurements perform similarly at the cosmological posterior level with LSST Y1 uncertainties. The 2D contours represent 1σ and 2σ confidence regions. The shaded area under the 1D posteriors represents the 1σ confidence level in 1D.

exercise, although we do not expect this choice to impact the results for the scale cuts. If the difference is above 0.3σ , it does not pass our criteria, following the same procedure as in Krause et al. (2021). We have tested the following set of scale cuts: $w > 8 \text{ Mpc } h^{-1}$, $\gamma_t > 8 \text{ Mpc } h^{-1}$; $w > 12 \text{ Mpc } h^{-1}$, $\gamma_t > 6 \text{ Mpc } h^{-1}$; and $w > 12 \text{ Mpc } h^{-1}$, and $\gamma_t > 8 \text{ Mpc } h^{-1}$. Only this last set of scale cuts meets the criteria. See Appendix B for the plots showing these differences.

4 RESULTS

Using the LSST Y1 set-up described in the previous section, we find that all the estimators perform in a similar way. In Fig. 3, we show the results for the simulated 2×2 pt analysis, combining galaxy–galaxy lensing and galaxy clustering for all the methodologies that we want to compare that localize the tangential shear measurements. We also add the result without applying any mitigation method, to illustrate the importance of using one of these methodologies to obtain unbiased cosmological constraints. All these results are applying the fiducial scale cuts that passed the criteria defined in Section 3.3: $w > 12 \text{ Mpc } h^{-1}$ and $\gamma_t > 8 \text{ Mpc } h^{-1}$. In Appendix C, we also show that $\gamma_t > 40 \text{ Mpc } h^{-1}$ cuts would be needed in order to recover unbiased cosmological constraints if we do not apply any mitigation scheme.

We find that all the methodologies are able to properly mitigate the impact of the input contamination and recover very similar

uncertainties on the most constrained cosmological parameters of a 2×2 pt analysis, that is, Ω_m and σ_8 . In the comparison we also include the new estimator that we have developed that *only* projects out the $1/R^2$ mode, without doing any extra transformation as in some of the other methodologies, labelled as ‘proj-out’ in the plot. The fact that all the estimators agree with each other, and also with this new estimator, indicates that projecting out this mode is the only thing that has any effect in all the mitigation methodologies at the cosmological posterior level.

Instead we have found that differences between the methods arise from input assumptions. In particular, we observe the biggest difference is between the two different variants of the PM marginalization. The method labelled as ‘PM (free per $z_i^i - z_s^j$)’ does not use any extra information with respect to the other estimators and can be compared directly to them. On the other hand, the one labelled as ‘PM (free per z_i^i)’ uses the approximation that the mass enclosed below the minimum scale used does not evolve within the redshift range of the lens bin, and moreover uses geometrical ‘shear-ratio’ information to constrain the scaling between different sources sharing the same lens bin. We find that the posteriors for this case are slightly more constraining as expected since they use more information, but also slightly more biased with respect to the input true cosmology. Thus, we recommend that when applying the PM marginalization case using geometrical information to LSST Y1 or a more constraining data set, the assumption that the PM evolves

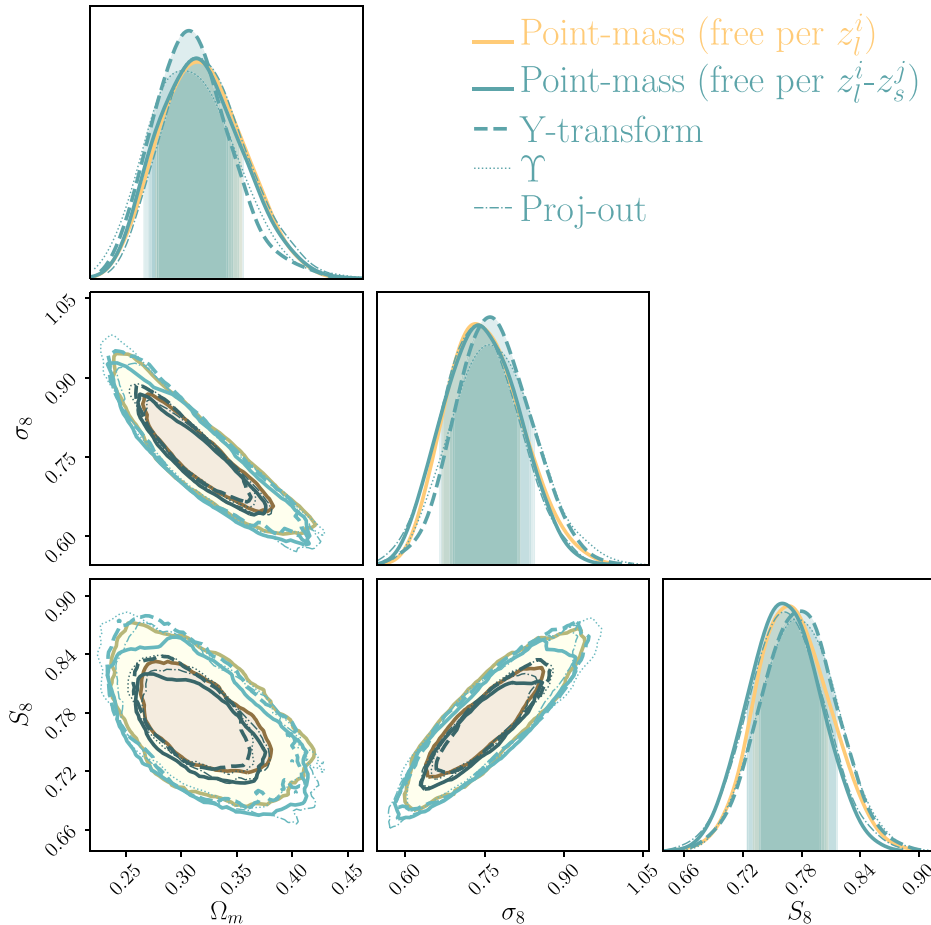


Figure 4. Application to DES Y3 data in a 2×2 pt analysis for the MAGLIM sample of each of the different methodologies to localize the tangential shear measurements. This figure demonstrates that all the methodologies to localize the galaxy–galaxy lensing measurements perform similarly at the cosmological posterior level with DES Y3 uncertainties and the presence of noise. The 2D contours represent 1σ and 2σ confidence regions. The shaded area under the 1D posteriors represent the 1σ confidence level in 1D.

slowly within a lens redshift bin should be tested for a given lens sample.

In Appendix D, we also compare the intrinsic alignment parameter posteriors. We find that all the estimators perform similarly, except for the PM using geometric information to constrain the scaling between the lens redshift bins that gives a much tighter (and still unbiased) posterior on the galaxy bias of the source sample b_{TA} parameter and a slightly tighter constraint for the A_2 and α_2 parameters, which are the parameters related to the tidal torque contribution to the model.

4.1 Application to DES Y3 data

After testing on noiseless simulated data vector with an LSST Y1 set-up, we apply all the methodologies to localize the galaxy–galaxy lensing measurements to the DES Y3 data, in particular to the 2×2 pt set-up with the MAGLIM lens sample presented in Porredon et al. (2022) but without the shear-ratio likelihood. The scale cuts we use are the same as in Porredon et al. (2022), that is, $6 \text{ Mpc } h^{-1}$ for galaxy–galaxy lensing and $8 \text{ Mpc } h^{-1}$ for the angular galaxy clustering. In Fig. 4, we show the results of this comparison. Note that the ‘PM (free per z_i^i)’ case corresponds to the fiducial DES Y3 2×2 pt result presented in Porredon et al. (2022). We find that all the

methodologies give consistent results, even in this noisy and more realistic scenario, which presents non-linearities at the small scales and includes all the effects from the real Universe. In Appendix E, we compare the constraining power of DES Y3 and LSST Y1 to give a sense of scale.

Moreover, we compare the posteriors on the TATT intrinsic alignment parameters for DES Y3 data and find similar conclusions as in the simulated case, as shown in Appendix D.

4.2 Performance differences

Regarding performance differences between the methods, we find the ‘proj-out’ estimator to be less numerically stable than the other approaches in its current COSMOSIS implementation. This is because the ‘proj-out’ method requires an input arbitrary η value to obtain the pseudo-inverse of the transformed covariance matrix, as defined in equation (22). While we have checked that a considerable wide range of η values yield the same results under the conditions of this analysis, outside a certain range that is no longer the case. Thus, robustness against different η values might need to be revisited in other settings. Moreover, we find the PM marginalization method to be the simplest to use as currently implemented in COSMOSIS, since it does not require modifying the input data vector or covariance matrix

Table 2. Comparison of the process and performance of each methodology to localize the galaxy–galaxy lensing measurements. The computational expense estimates are based on the current implementation of the COSMOSIS code. More details about the performance differences can be found in Section 4.2.

	Modify data vector?	Numerical stability	Computational expense
PM marginalization	No	Excellent	Fastest
Annular differential surface density (Υ)	Yes	Excellent	Fast
Y-transformation	Yes	Excellent	Slow
Proj-out	Yes	Poor	Slowest

files. Finally, we also compare the running time of the different estimators. Using the LSST Y1 set-up, the PM marginalization without geometrical information took 7 h, the Υ statistic took 7 h 45 min, the Y-transformation took 12 h and the proj-out estimator took 16 h 40 min, using the MULTINEST sampler with the settings defined above and using the same number of cores. On DES Y3 data and the POLYCHORD sampler with high-accuracy settings, the PM marginalization without geometrical information took 45 h, the Υ statistic took 49 h, the Y-transformation took 54 h and the proj-out estimator took 70 h. We summarize these findings in Table 2.

5 SUMMARY AND CONCLUSIONS

In this paper, we compare three existing methodologies to localize the galaxy–galaxy lensing measurements: the annular differential surface density estimator (Υ) presented in Baldauf et al. (2010), the Y-transformation derived in Park et al. (2021), and the PM marginalization described in MacCrann et al. (2020). We compare them at the cosmological posterior level, performing a 2×2 pt analysis which combines projected angular clustering and tangential shear measurements. We find that all these methods are able to mitigate the impact of small-scale information when using a LSST Y1 set-up with noiseless simulated data vectors, and that they are all performing in a very similar manner, yielding equivalent posteriors on the cosmological parameters.

To further illustrate the similarities and/or differences amongst the above listed estimators, we also construct a new estimator that we refer to as ‘project-out’. The ‘project-out’ method identifies the projection of the observed galaxy–galaxy lensing data vector on to the $1/R^2$ mode, and then it removes it from the original vector, following a similar procedure to the Y-transform methodology, but in this case *only* removing this mode. Then, we proceed to compare the posteriors obtained with the ‘project-out’ method to the other ones, finding it yields equivalent results. Therefore, we conclude that the removal of the $1/R^2$ mode is the only relevant transformation that is needed to localize the tangential shear measurements and that the rest of the modifications in the other estimators are not producing any significant differences at the cosmological posterior level. We also compare two different variations of the PM marginalization methodology, one that uses exactly the same information as the other estimators and one that uses extra geometrical information to constrain the scaling of the PM between different lens and source bin combinations, by assuming that the enclosed mass does not evolve with redshift within the width of the lens bin. We find that the PM marginalization using geometric information yields slightly more constraining but also slightly biased results on the cosmological parameters in the LSST Y1 simulated case, due to the approximation it makes. Thus, the assumption going into this PM variant should always be tested before applying it to more constraining data sets. Notably, we also find that the extra

geometrical information significantly improves the precision (while keeping the accuracy) of the intrinsic alignment parameters of the tidal alignment and tidal torque (TATT) model. In particular, we find the biggest difference in the posterior for the galaxy bias of the source sample b_{TA} and in the parameters controlling the tidal torque part of the TATT model.

We also compare the results obtained using any of the mitigation schemes with the case of not applying any mitigation scheme but applying larger scale cuts. With the LSST Y1 set-up, we find that the mitigation schemes yield ~ 1.3 times more constraining S_8 results than applying larger scale cuts without using any mitigation scheme.

Finally, we apply all the methods to DES Y3 data, reaching very similar conclusions as in the simulated case. However, even if the DES Y3 data have larger uncertainties than the simulated LSST Y1 case, this exercise is still meaningful since it provides an input data vector with the non-linearities and baryonic effects of the real Universe, together with any other unforeseen contamination that is not present in our fiducial model. It also tests the methods in the presence of noise. In this case we still find that all the methodologies perform in a similar manner.

ACKNOWLEDGEMENTS

Funding for the DES Projects has been provided by the U.S. Department of Energy, the U.S. National Science Foundation, the Ministry of Science and Education of Spain, the Science and Technology Facilities Council of the United Kingdom, the Higher Education Funding Council for England, the National Center for Supercomputing Applications at the University of Illinois at Urbana-Champaign, the Kavli Institute of Cosmological Physics at the University of Chicago, the Center for Cosmology and Astro-Particle Physics at the Ohio State University, the Mitchell Institute for Fundamental Physics and Astronomy at Texas A&M University, Financiadora de Estudos e Projetos, Fundação Carlos Chagas Filho de Amparo à Pesquisa do Estado do Rio de Janeiro, Conselho Nacional de Desenvolvimento Científico e Tecnológico and the Ministério da Ciência, Tecnologia e Inovação, the Deutsche Forschungsgemeinschaft and the Collaborating Institutions in the Dark Energy Survey. The Collaborating Institutions are Argonne National Laboratory, the University of California at Santa Cruz, the University of Cambridge, Centro de Investigaciones Energéticas, Medioambientales y Tecnológicas-Madrid, the University of Chicago, University College London, the DES-Brazil Consortium, the University of Edinburgh, the Eidgenössische Technische Hochschule (ETH) Zürich, Fermi National Accelerator Laboratory, the University of Illinois at Urbana-Champaign, the Institut de Ciències de l’Espai (IEEC/CSIC), the Institut de Física d’Altes Energies, Lawrence Berkeley National Laboratory, the Ludwig-Maximilians Universität München and the associated Excellence Cluster Universe, the University of Michi-

gan, NSF’s NOIRLab, the University of Nottingham, The Ohio State University, the University of Pennsylvania, the University of Portsmouth, SLAC National Accelerator Laboratory, Stanford University, the University of Sussex, Texas A&M University, and the OzDES Membership Consortium. Based in part on observations at Cerro Tololo Inter-American Observatory at NSF’s NOIRLab (NOIRLab Prop. ID 2012B-0001; PI: J. Frieman), which is managed by the Association of Universities for Research in Astronomy (AURA) under a cooperative agreement with the National Science Foundation. The DES data management system is supported by the National Science Foundation under grant numbers AST-1138766 and AST-1536171. The DES participants from Spanish institutions are partially supported by MICINN under grants ESP2017-89838, PGC2018-094773, PGC2018-102021, SEV-2016-0588, SEV-2016-0597, and MDM-2015-0509, some of which include ERDF funds from the European Union. IFAE is partially funded by the CERCA program of the Generalitat de Catalunya. Research leading to these results has received funding from the European Research Council under the European Union’s Seventh Framework Program (FP7/2007-2013) including ERC grant agreements 240672, 291329, and 306478. We acknowledge support from the Brazilian Instituto Nacional de Ciência e Tecnologia (INCT) do e-Universo (CNPq grant 465376/2014-2). This manuscript has been authored by Fermi Research Alliance, LLC under Contract No. DE-AC02-07CH11359 with the U.S. Department of Energy, Office of Science, Office of High Energy Physics.

DATA AVAILABILITY

The data underlying this article are available in the DES Y3 Cosmology Data Release page at <https://des.ncsa.illinois.edu/releases/y3a2/Y3key-products>. The code developed for this project is integrated within the COSMOSIS framework and can be shared upon request.

REFERENCES

Abbott T. M. C. et al., 2018, *Phys. Rev. D*, 98, 043526
 Abbott T. M. C. et al., 2022, *Phys. Rev. D*, 105, 023520
 Aitken A. C., 1936, *Proc. R. Soc. Edinburgh*, 55, 42
 Baldauf T., Smith R. E., Seljak U., Mandelbaum R., 2010, *Phys. Rev. D*, 81, 063531
 Baxter E. et al., 2016, *MNRAS*, 461, 4099
 Bernstein G. M., 2009, *ApJ*, 695, 652
 Brainerd T. G., Blandford R. D., Smail I., 1996, *ApJ*, 466, 623
 Bridle S. L., Crittenden R., Melchiorri A., Hobson M. P., Kneissl R., Lasenby A. N., 2002, *MNRAS*, 335, 1193
 Choi A., Tyson J. A., Morrison C. B., Jee M. J., Schmidt S. J., Margoniner V. E., Wittman D. M., 2012, *ApJ*, 759, 101
 Clampitt J. et al., 2017, *MNRAS*, 465, 4204
 Desjacques V., Jeong D., Schmidt F., 2018, *Phys. Rep.*, 733, 1
 Fang X., Eifler T., Krause E., 2020, *MNRAS*, 497, 2699
 Feroz F., Hobson M. P., 2008, *MNRAS*, 384, 449
 Feroz F., Hobson M. P., Bridges M., 2009, *MNRAS*, 398, 1601
 Feroz F., Hobson M. P., Cameron E., Pettitt A. N., 2019, *Open J. Astrophys.*, 2, 10
 Giblin B. et al., 2021, *A&A*, 645, A105
 Heymans C. et al., 2021, *A&A*, 646, A140
 Hildebrandt H. et al., 2020, *A&A*, 633, A69
 Hu W., Jain B., 2004, *Phys. Rev. D*, 70, 043009
 Jain B., Taylor A., 2003, *Phys. Rev. Lett.*, 91, 141302
 Joachimi B., Bridle S. L., 2010, *A&A*, 523, A1
 Joudaki S. et al., 2018, *MNRAS*, 474, 4894

Krause E., Eifler T., 2017, *MNRAS*, 470, 2100
 Krause E. et al., 2021, preprint ([arXiv:2105.13548](https://arxiv.org/abs/2105.13548))
 Kuijken K. et al., 2015, *MNRAS*, 454, 3500
 Leauthaud A. et al., 2022, *MNRAS*, 510, 6150
 Lee S. et al., 2022, *MNRAS*, 509, 2033
 Luo R. et al., 2022, *A&A*, 668, A12
 MacCrann N., Blazek J., Jain B., Krause E., 2020, *MNRAS*, 491, 5498
 Mandelbaum R., Slosar A., Baldauf T., Seljak U., Hirata C. M., Nakajima R., Reyes R., Smith R. E., 2013, *MNRAS*, 432, 1544
 Pandey S. et al., 2020, *Phys. Rev. D*, 102, 123522
 Pandey S. et al., 2022, *Phys. Rev. D*, 106, 043520
 Park Y. et al., 2016, *Phys. Rev. D*, 94, 063533
 Park Y., Rozo E., Krause E., 2021, *Phys. Rev. Lett.*, 126, 021301
 Porredon A. et al., 2022, *Phys. Rev. D*, 106, 103530
 Prat J. et al., 2018, *Phys. Rev. D*, 98, 042005
 Prat J. et al., 2019, *MNRAS*, 487, 1363
 Prat J. et al., 2022, *Phys. Rev. D*, 105, 083528
 Sánchez C. et al., 2022, *Phys. Rev. D*, 105, 083529
 Schaye J. et al., 2010, *MNRAS*, 402, 1536
 Seljak U., 1998, *ApJ*, 503, 492
 Singh S., Mandelbaum R., Seljak U., Rodríguez-Torres S., Slosar A., 2020, *MNRAS*, 491, 51
 Takahashi R., Sato M., Nishimichi T., Taruya A., Oguri M., 2012, *ApJ*, 761, 152
 Tegmark M., 1997, *Phys. Rev. D*, 55, 5895
 Tegmark M., Hamilton A. J. S., Strauss M. A., Vogeley M. S., Szalay A. S., 1998, *ApJ*, 499, 555
 The LSST Dark Energy Science Collaboration, 2018, preprint ([arXiv:1809.01669](https://arxiv.org/abs/1809.01669))
 van Daalen M. P., Schaye J., Booth C. M., Dalla Vecchia C., 2011, *MNRAS*, 415, 3649
 van Uitert E. et al., 2018, *MNRAS*, 476, 4662
 Yoo J., Seljak U., 2012, *Phys. Rev. D*, 86, 063514
 Zacharegkas G. et al., 2022, *MNRAS*, 509, 3119
 Zuntz J. et al., 2015, *Astron. Comput.*, 12, 45

APPENDIX A: EQUIVALENCE BETWEEN ‘PROJECT-OUT’ AND POINT-MASS MARGINALIZATION

In this appendix, we show that the ‘project-out’ and the PM marginalization methods are mathematically equivalent if the prior for the PM is infinitely wide. Let us define \mathbf{m} to be the model prediction and \mathbf{d} to be the data vector.

For the PM marginalization case, we have

$$\chi_{\text{PM}}^2 = (\mathbf{m} - \mathbf{d})^T \mathbf{N}^{-1} (\mathbf{m} - \mathbf{d}).$$

However, in the infinite-prior case it is

$$\mathbf{N}^{-1} = \mathbf{C}_y^{-1} - \mathbf{C}_y^{-1} \mathbf{A} (\mathbf{A}^T \mathbf{C}_y^{-1} \mathbf{A})^{-1} \mathbf{A}^T \mathbf{C}_y^{-1} = \mathbf{C}_y^{-1} (\mathbf{I} - \mathbf{P}),$$

which results in

$$\chi_{\text{PM}}^2 = (\mathbf{m} - \mathbf{d})^T \mathbf{C}_y^{-1} \mathbf{M} (\mathbf{m} - \mathbf{d}). \quad (\text{A1})$$

So, $\mathbf{N}^{-1} (\mathbf{m} - \mathbf{d})$ exactly simply removes the contribution from the $1/\theta^2$ mode from the model and data vectors, like the project-out approach. The project-out method is by construction only removing that mode from the data vector and does nothing else. Therefore, the two methods are equivalent in the above limit.

APPENDIX B: SCALE CUTS

In Fig. B1, we show the result of the scale cuts tests for the successful scenario. We have found that scales cuts of $w > 12 \text{ Mpc } h^{-1}$ and $\gamma_t > 8 \text{ Mpc } h^{-1}$ are sufficient in the LSST Y1 set-up to recover

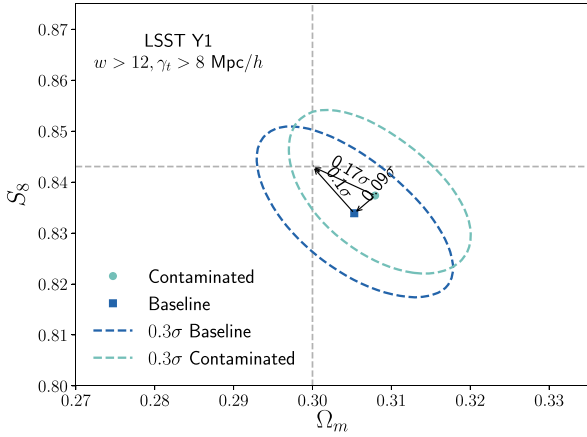


Figure B1. $S_8 - \Omega_m$ plane showing the differences in the posteriors using either a fiducial input data vector or a contaminated one with baryonic and non-linear galaxy bias effects. The dashed grey lines mark the input fiducial cosmology. Comparing the contaminated and the baseline posteriors using different sets of scale cuts we have determined that $w > 12 \text{ Mpc } h^{-1}$, $\gamma_t > 8 \text{ Mpc } h^{-1}$ cuts are sufficient for the LSST Y1 set-up to recover unbiased results. Specifically, these cuts produce a difference of 0.09σ in the $S_8 - \Omega_m$ plane, which is below the threshold of 0.3σ following the criteria from Krause et al. (2021).

unbiased results when inputting a contaminated data vector with non-linear galaxy bias and baryonic effects. We obtain that in this case the difference in the $S_8 - \Omega_m$ plane between the fiducial and contaminated data vectors is 0.09σ which is below the threshold of 0.3σ , following the same procedure as in Krause et al. (2021). We compare posteriors using the fiducial versus the contaminated data vectors (instead of with the input cosmology) to remove any projection effects⁶ impact on this test. We have also tried using $w > 8 \text{ Mpc } h^{-1}$, $\gamma_t > 8 \text{ Mpc } h^{-1}$ scale cuts, which produced a difference of 0.46σ and $w > 12 \text{ Mpc } h^{-1}$ and $\gamma_t > 6 \text{ Mpc } h^{-1}$ cuts, which produced a difference of 0.93σ in the same $S_8 - \Omega_m$ plane. Note that these combinations of scale cuts are an arbitrary choice, and applications on actual data might want to optimize these choices.

APPENDIX C: MITIGATION SCHEMES VERSUS NO MITIGATION

In this appendix, we address the following question: How much constraining power do we gain by applying one of the mitigation schemes versus not applying any of them and using fewer scales? To perform this comparison, we choose the PM case that includes geometrical information since that is what we used to define the fiducial scale cuts, as described in Section 3.3. We perform this comparison for the LSST Y1 simulated analysis. We show the results in Fig. C1. There we compare the posteriors between using the PM mitigation scheme and without applying any mitigation with the following two sets of scale cuts:

(i) $w > 12 \text{ Mpc } h^{-1}$, $\gamma_t > 8 \text{ Mpc } h^{-1}$: the same scale cuts needed to recover unbiased constraints when applying the PM marginalization scheme including geometrical information.

⁶Projection effects are residual differences between the input cosmology and the posteriors under ideal conditions (when the input data vector and model are the same) due to having broad parameter spaces.

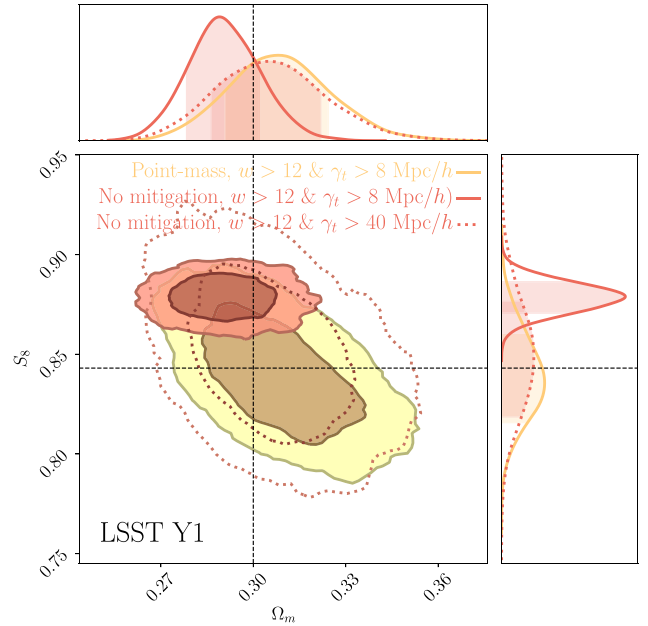


Figure C1. We compare the constraining power when applying a mitigation scheme (in this case the PM marginalization) versus when not applying any scheme and using less scales for the galaxy–galaxy lensing probe. We conclude that using a marginalization scheme yields ~ 1.3 more constraining power on the S_8 parameter assuming an LSST Y1 simulated scenario.

(ii) $w > 12 \text{ Mpc } h^{-1}$, $\gamma_t > 40 \text{ Mpc } h^{-1}$: scale cuts needed to recover unbiased cosmological constraints without using any mitigation scheme, following the same criteria described in Section B. To obtain them, we have chosen to keep the galaxy clustering scale cut unchanged and increase the tangential shear cut until we recover unbiased results. Under this set-up, we find a 0.17σ difference in the $S_8 - \Omega_m$ plane, while we find a 0.35σ difference if we use $\gamma_t > 32 \text{ Mpc } h^{-1}$ instead, which does not meet the criteria.

We find that S_8 is ~ 1.3 times more constraining when using the PM marginalization scheme versus when not using any mitigation scheme and using larger scale cuts.

APPENDIX D: EFFECT ON THE INTRINSIC ALIGNMENT PARAMETERS

In Fig. D1, we show the posteriors for the tidal alignment and tidal torque (TATT) five-parameter intrinsic alignment model, at the top for the LSST Y1 simulated case and at the bottom applied to DES Y3 data, in both cases for a 2×2 pt analysis without including the shear-ratio likelihood. Using the simulated data in the LSST Y1 set-up, we find that using the extra geometric information in the PM marginalization, i.e. the case labelled as ‘PM (free per z_i')’ and described in Section 2.3.1 is beneficial to constrain the intrinsic alignment parameters. In particular, we find the parameter describing the galaxy bias of the source sample b_{TA} is more constrained, as well as the parameters affecting the tidal torque part of the model (a_2 which describes the amplitude of the IA effect and α_2 that modulates its redshift evolution). On the Y3 data, we find that the biggest gain in constraining power is in the a_2 parameter.

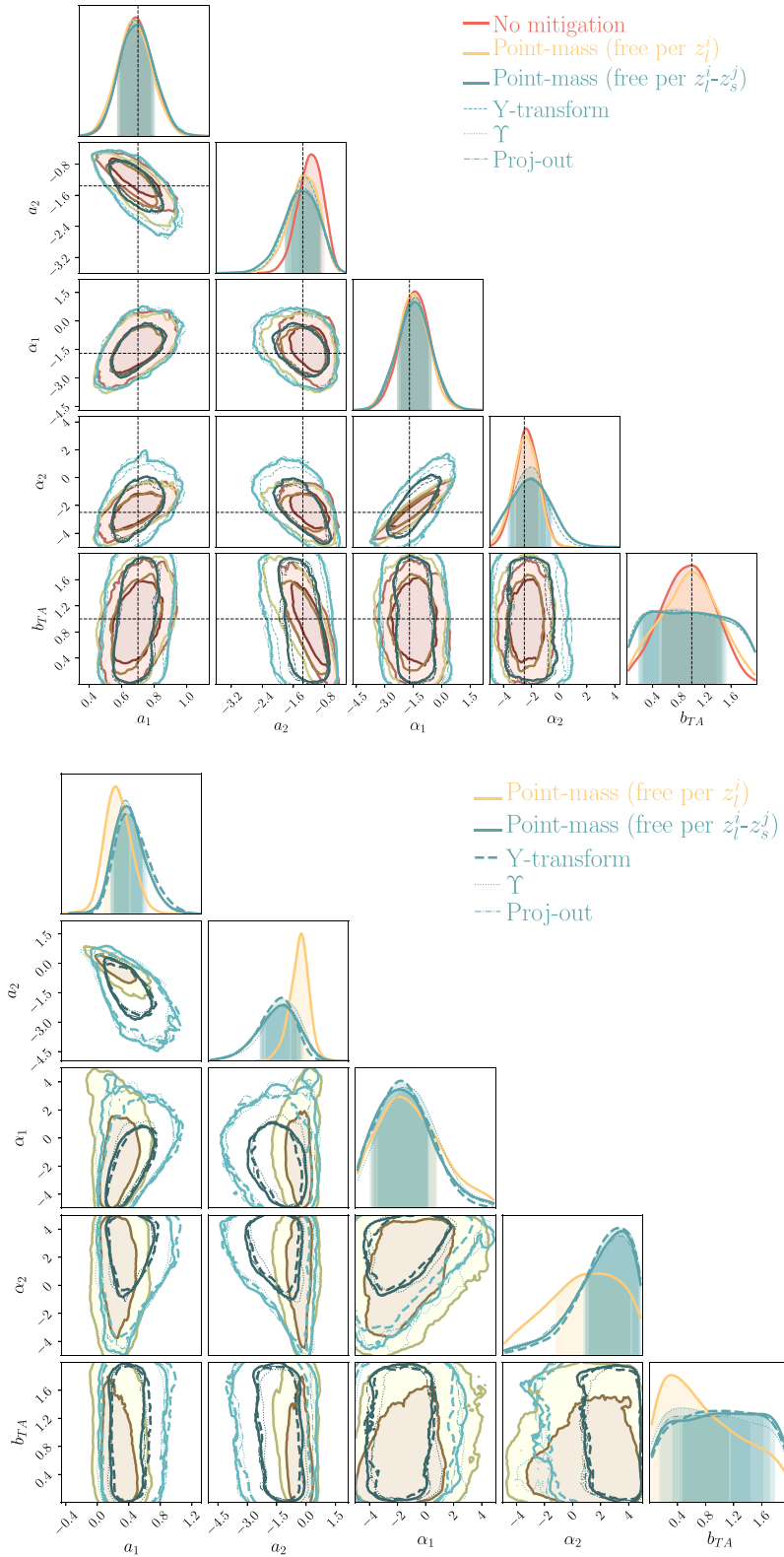


Figure D1. Top: Intrinsic alignment TATT parameter posteriors obtained from an input galaxy clustering and galaxy–galaxy lensing data vector ($2 \times \text{pt}$) with non-linear bias and baryonic contamination with an LSST Y1 covariance, comparing the different methodologies to localize the tangential shear measurements. **Bottom:** Analogous comparison applied to DES Y3 data, for the MAGLIM $2 \times \text{pt}$ analysis without the shear-ratio likelihood.

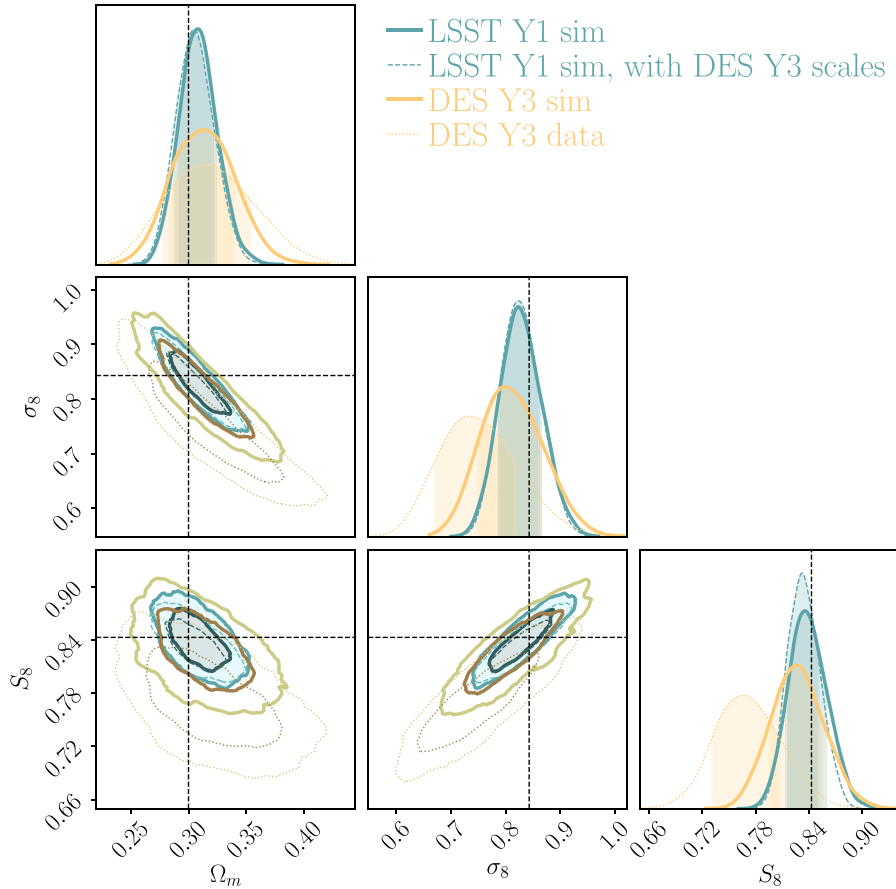


Figure E1. Comparison of the constraining power between LSST Y1 and DES Y3 for a 2×2 pt simulated analysis using the fiducial model data vectors. For LSST Y1 we use scales $w > 12 \text{ Mpc } h^{-1}$, $\gamma_t > 8 \text{ Mpc } h^{-1}$, and for DES Y3 $w > 8 \text{ Mpc } h^{-1}$, $\gamma_t > 6 \text{ Mpc } h^{-1}$. We also include the data results from DES Y3 2×2 pt.

APPENDIX E: COMPARISON BETWEEN DES Y3 AND LSST Y1

In Fig. E1, we compare the constraining power between the DES Y3 and LSST Y1 set-ups, which besides being interesting on its own also provides some basic validation of the LSST Y1 covariance that we compute with COSMOCOV. First, we compare the fiducial LSST Y1 simulated analysis with the fiducial scales of $w > 12 \text{ Mpc } h^{-1}$ and $\gamma_t > 8 \text{ Mpc } h^{-1}$, with the scales used in the DES Y3 data of $w > 8 \text{ Mpc } h^{-1}$ and $\gamma_t > 6 \text{ Mpc } h^{-1}$. We observe that the degradation in the constraining power coming only from the differences in the scales is quite small. Then, we compare the size of the LSST Y1 contours with the simulated DES Y3 analysis, which was used in Krause et al. (2021) to determine the scale cuts for that case. The only two differences between the contours labelled ‘LSST Y1 sim, with DES Y3 scales’ and the ones labelled ‘DES Y3 sim’ are the covariances and the input redshift distributions, as described in Section 3.1. Finally, we also compare the DES Y3 simulated analysis with the actual final data DES Y3 2×2 pt results, which use a different set of priors as the rest of the chains, had an updated covariance accounting for the best-fitting parameters and are not centred at the same cosmology.

¹Department of Astronomy and Astrophysics, University of Chicago, Chicago, IL 60637, USA

²Kavli Institute for Cosmological Physics, University of Chicago, Chicago, IL 60637, USA

³Kavli Institute for the Physics and Mathematics of the Universe (WPI), UTIAS, The University of Tokyo, Kashiwa, Chiba 277-8583, Japan

⁴Department of Applied Mathematics and Theoretical Physics, University of Cambridge, Cambridge CB3 0WA, UK

⁵NASA Goddard Space Flight Center, Greenbelt, MD 20771, USA

⁶Department of Physics and Astronomy, University of Pennsylvania, Philadelphia, PA 19104, USA

⁷Department of Physics, Northeastern University, Boston, MA 02115, USA

⁸Institució Catalana de Recerca i Estudis Avançats, E-08010 Barcelona, Spain

⁹Institut de Física d’Altes Energies (IFAE), The Barcelona Institute of Science and Technology, Campus UAB, E-08193 Bellaterra (Barcelona), Spain

¹⁰Argonne National Laboratory, 9700 South Cass Avenue, Lemont, IL 60439, USA

¹¹Department of Physics, University of Michigan, Ann Arbor, MI 48109, USA

¹²Institute of Astronomy, University of Cambridge, Madingley Road, Cambridge CB3 0HA, UK

¹³Kavli Institute for Cosmology, University of Cambridge, Madingley Road, Cambridge CB3 0HA, UK

¹⁴Physics Department, 2320 Chamberlin Hall, University of Wisconsin-Madison, 1150 University Avenue Madison, WI 53706-1390, USA

¹⁵Department of Physics, Duke University, Durham, NC 27708, USA

¹⁶California Institute of Technology, 1200 East California Blvd, MC 249-17, Pasadena, CA 91125, USA

¹⁷Instituto de Física Teórica, Universidade Estadual Paulista, 01140-070 São Paulo, Brazil

¹⁸Laboratório Interinstitucional de e-Astronomia - LIneA, Rua Gal. José Cristino 77, Rio de Janeiro, RJ 20921-400, Brazil

- ¹⁹Department of Physics, Carnegie Mellon University, Pittsburgh, PA 15312, USA
- ²⁰Instituto de Astrofísica de Canarias, E-38205 La Laguna, Tenerife, Spain
- ²¹Departamento de Astrofísica, Universidad de La Laguna, E-38206 La Laguna, Tenerife, Spain
- ²²Center for Astrophysical Surveys, National Center for Supercomputing Applications, 1205 West Clark St., Urbana, IL 61801, USA
- ²³Department of Astronomy, University of Illinois at Urbana-Champaign, 1002 W. Green Street, Urbana, IL 61801, USA
- ²⁴Physics Department, William Jewell College, Liberty, MO 64068, USA
- ²⁵Jodrell Bank Center for Astrophysics, School of Physics and Astronomy, University of Manchester, Oxford Road, Manchester M13 9PL, UK
- ²⁶Institut d'Estudis Espacials de Catalunya (IEEC), E-08034 Barcelona, Spain
- ²⁷Institute of Space Sciences (ICE, CSIC), Campus UAB, Carrer de Can Magrans, s/n, E-08193 Barcelona, Spain
- ²⁸Kavli Institute for Particle Astrophysics & Cosmology, Stanford University, PO Box 2450, Stanford, CA 94305, USA
- ²⁹Lawrence Berkeley National Laboratory, 1 Cyclotron Road, Berkeley, CA 94720, USA
- ³⁰Fermi National Accelerator Laboratory, PO Box 500, Batavia, IL 60510, USA
- ³¹NSF AI Planning Institute for Physics of the Future, Carnegie Mellon University, Pittsburgh, PA 15213, USA
- ³²Université Grenoble Alpes, CNRS, LPSC-IN2P3, F-38000 Grenoble, France
- ³³Department of Astronomy/Steward Observatory, University of Arizona, 933 North Cherry Avenue, Tucson, AZ 85721-0065, USA
- ³⁴Jet Propulsion Laboratory, California Institute of Technology, 4800 Oak Grove Dr, Pasadena, CA 91109, USA
- ³⁵Center for Cosmology and Astro-Particle Physics, The Ohio State University, Columbus, OH 43210, USA
- ³⁶Department of Physics, The Ohio State University, Columbus, OH 43210, USA
- ³⁷Department of Astronomy, University of California, Berkeley, 501 Campbell Hall, Berkeley, CA 94720, USA
- ³⁸Faculty of Physics, University Observatory, Ludwig-Maximilians-Universität, Scheinerstr 1, D-81679 Munich, Germany
- ³⁹School of Physics and Astronomy, Cardiff University, Cardiff CF24 3AA, UK
- ⁴⁰Department of Astronomy, University of Geneva, ch. d'Écogia 16, CH-1290 Versoix, Switzerland
- ⁴¹Department of Physics, University of Arizona, Tucson, AZ 85721, USA
- ⁴²Department of Physics, Stanford University, 382 Via Pueblo Mall, Stanford, CA 94305, USA
- ⁴³SLAC National Accelerator Laboratory, Menlo Park, CA 94025, USA
- ⁴⁴Instituto de Física Gleb Wataghin, Universidade Estadual de Campinas, Campinas, SP 13083-859, Brazil
- ⁴⁵Institute for Astronomy, University of Edinburgh, Edinburgh EH9 3HJ, UK
- ⁴⁶ICTP South American Institute for Fundamental Research Instituto de Física Teórica, Universidade Estadual Paulista, 01140-070 São Paulo, Brazil
- ⁴⁷Centro de Investigaciones Energéticas, Medioambientales y Tecnológicas (CIEMAT), Madrid, Spain
- ⁴⁸Brookhaven National Laboratory, Bldg 510, Upton, NY 11973, USA
- ⁴⁹Department of Physics and Astronomy, Stony Brook University, Stony Brook, NY 11794, USA
- ⁵⁰Département de Physique Théorique and Center for Astroparticle Physics, Université de Genève, 24 quai Ernest Ansermet, CH-1211 Geneva, Switzerland
- ⁵¹Excellence Cluster Origins, Boltzmannstr 2, D-85748 Garching, Germany
- ⁵²Max Planck Institute for Extraterrestrial Physics, Giessenbachstrasse, D-85748 Garching, Germany
- ⁵³Fakultät für Physik, Ludwig-Maximilians Universität München, Universitäts-Sternwarte, Scheinerstr 1, D-81679 München, Germany
- ⁵⁴Cerro Tololo Inter-American Observatory, NSF's National Optical-Infrared Astronomy Research Laboratory, Casilla 603, La Serena, Chile
- ⁵⁵Institute of Cosmology and Gravitation, University of Portsmouth, Portsmouth PO1 3FX, UK
- ⁵⁶Institut d'Astrophysique de Paris, CNRS, UMR 7095, F-75014 Paris, France
- ⁵⁷Institut d'Astrophysique de Paris, Sorbonne Universités, UPMC Univ Paris 06, UMR 7095, F-75014 Paris, France
- ⁵⁸Department of Physics & Astronomy, University College London, Gower Street, London WC1E 6BT, UK
- ⁵⁹Astronomy Unit, Department of Physics, University of Trieste, via Tiepolo 11, I-34131 Trieste, Italy
- ⁶⁰INAF-Osservatorio Astronomico di Trieste, via G. B. Tiepolo 11, I-34143 Trieste, Italy
- ⁶¹Institute for Fundamental Physics of the Universe, Via Beirut 2, I-34014 Trieste, Italy
- ⁶²Hamburger Sternwarte, Universität Hamburg, Gojenbergsweg 112, D-21029 Hamburg, Germany
- ⁶³Department of Physics, IIT Hyderabad, Kandi, Telangana 502285, India
- ⁶⁴Institute of Theoretical Astrophysics, University of Oslo, PO Box 1029 Blindern, NO-0315 Oslo, Norway
- ⁶⁵Department of Astronomy, University of Michigan, Ann Arbor, MI 48109, USA
- ⁶⁶School of Mathematics and Physics, University of Queensland, Brisbane, QLD 4072, Australia
- ⁶⁷Santa Cruz Institute for Particle Physics, Santa Cruz, CA 95064, USA
- ⁶⁸Center for Astrophysics | Harvard & Smithsonian, 60 Garden Street, Cambridge, MA 02138, USA
- ⁶⁹Departamento de Física Matemática, Instituto de Física, Universidade de São Paulo, CP 66318, São Paulo, SP 05314-970, Brazil
- ⁷⁰Observatório Nacional, Rua Gal. José Cristino 77, Rio de Janeiro, RJ 20921-400, Brazil
- ⁷¹Department of Astrophysical Sciences, Princeton University, Peyton Hall, Princeton, NJ 08544, USA
- ⁷²School of Physics and Astronomy, University of Southampton, Southampton SO17 1BJ, UK
- ⁷³Computer Science and Mathematics Division, Oak Ridge National Laboratory, Oak Ridge, TN 3783, USA

This paper has been typeset from a $\text{\TeX}/\text{\LaTeX}$ file prepared by the author.