



Human Langerhans Cells Express a Specific TLR Profile and Differentially Respond to Viruses and Gram-Positive Bacteria

Vincent Flacher, Marielle Bouschbacher, Estelle Verronèse, Catherine Massacrier, Vanja Sisirak, Odile Berthier-Vergnes, Blandine de Saint-Vis, Christophe Caux, Colette Dezutter-Dambuyant, Serge Lebecque, et al.

► To cite this version:

Vincent Flacher, Marielle Bouschbacher, Estelle Verronèse, Catherine Massacrier, Vanja Sisirak, et al.. Human Langerhans Cells Express a Specific TLR Profile and Differentially Respond to Viruses and Gram-Positive Bacteria. *Journal of Immunology*, 2006, 177 (11), pp.7959-7967. 10.4049/jimmunol.177.11.7959 . hal-03908429

HAL Id: hal-03908429

<https://hal.science/hal-03908429>

Submitted on 5 Jun 2023

HAL is a multi-disciplinary open access archive for the deposit and dissemination of scientific research documents, whether they are published or not. The documents may come from teaching and research institutions in France or abroad, or from public or private research centers.

L'archive ouverte pluridisciplinaire **HAL**, est destinée au dépôt et à la diffusion de documents scientifiques de niveau recherche, publiés ou non, émanant des établissements d'enseignement et de recherche français ou étrangers, des laboratoires publics ou privés.

Human Langerhans cells express a specific TLR profile and differentially respond to viruses and Gram-positive bacteria

Vincent Flacher^{*†1}, Marielle Bouschbacher^{‡2}, Estelle Verronèse[‡], Catherine Massacrier^{*}, Vania Sisirak[§], Odile Berthier-Vergnes[‡], Blandine de Saint-Vis^{*}, Christophe Caux^{*§}, Colette Dezutter-Dambuyant[‡], Serge Lebecque^{*¶} and Jenny Valladeau^{‡3,4}

^{*} Schering-Plough, Laboratory for Immunological Research, Dardilly, France

[†] Current address: Department of Dermatology, Innsbruck Medical University, Innsbruck, Austria

[‡] Université Claude Bernard – Lyon I, EA3732, Centre Hospitalier Edouard Herriot, Lyon, France

[§] Current address: Centre Léon Bérard, Lyon, France

[¶] Current address: Service de Pneumologie, Centre Hospitalier Lyon-Sud, Pierre-Bénite, France

Running title: Activation of fresh human LC by TLR ligands

Key words: Human / Skin / Dendritic cells / Bacterial / Viral

Abbreviations: **DC:** Dendritic cell; **LC:** Langerhans cell; **mDC:** myeloid DC; **pDC:** plasmacytoid DC; **mAb:** monoclonal antibody; **TLR:** Toll-like Receptor; **LPS:** lipopolysaccharide; **PGN:** peptidoglycan; **LTA:** lipoteichoic acid; **poly(I:C):** polyriboinosinic-polyribocytidylic acid; **dsRNA:** double-stranded RNA

Summary

Dendritic cells (DC) are antigen-presenting cells essential for the development of primary immune responses. In pluristratified epithelia, Langerhans cells (LC) are a critical subset of DC, which take up antigens, and migrate toward lymph nodes upon inflammatory stimuli. Toll-like Receptors (TLR) allow detection of pathogen-associated molecular patterns (PAMP) by different DC subsets. The repertoire of TLR expressed by human LC is uncharacterized, and their ability to directly respond to PAMP has not been systematically investigated. We show here for the first time that freshly purified LC from human skin express mRNA encoding TLR1, TLR2, TLR3, TLR5, TLR6 and TLR10. In addition, keratinocytes *ex vivo* display TLR1-5, TLR7 and TLR10. Accordingly, highly enriched immature LC efficiently respond to TLR2 agonists peptidoglycan (PGN) and lipoteichoic acid from Gram-positive bacteria, and to double-stranded RNA (dsRNA) which engages TLR3. In contrast, LC do not directly sense TLR7/8 ligands and lipopolysaccharide from Gram-negative bacteria, which signals through TLR4. TLR engagement also results in cytokine production, with marked differences depending on the PAMP detected. TLR2 and TLR3 ligands increase IL-6 and IL-8 production, while dsRNA alone stimulates TNF- α release. Strikingly, only PGN triggers IL-10 secretion, thereby suggesting a specific function in tolerance to commensal Gram-positive bacteria. However, LC do not produce IL-12p70 or type I Interferons. In conclusion, human LC are equipped with TLR that enable direct detection of PAMP from viruses and Gram-positive bacteria, subsequent phenotypic maturation, and differential cytokine production. This implies a significant role for LC in the control of skin immune responses.

Introduction

Dendritic cells (DC) are antigen-presenting cells (APC) that are required for initiation of specific T-cell driven immune responses (1). DC residing in non-lymphoid tissue, such as Langerhans cells (LC) in the epidermis are immature cells whose primary function is to capture antigen. This function is principally achieved through specialized surface-membrane endocytic structures. Concomitant with antigen processing in specialized organelles of the endocytic pathway, DC, upon exposure to pathogen-associated molecular patterns (PAMP) (2), undergo a series of phenotypic modifications, termed maturation, and migrate to secondary lymphoid tissue. The maturation of DC results in expression of surface MHC class II and costimulatory molecules, which eventually translates into highly efficient presentation, by the appropriate MHC molecules, of processed antigen to T cells (1).

The Toll-Like Receptors (TLR) represent a family of germline-encoded type I transmembrane proteins, which are essential to the recognition of PAMP by the innate immune system (3). 10 human TLR have been described so far. Upon engagement of TLR, signal transduction events are initiated by the cytoplasmic TIR (Toll / Interleukin-1 Receptor) domain. Depending on which TLR is engaged, a specific set of transcription factors (including AP-1, Interferon Response Factors and NF- κ B) is activated, subsequently inducing expression of proinflammatory cytokines, chemokines and costimulatory molecules (4, 5).

TLR recognize a wide array of molecules, whose origin can be bacterial, viral or parasitic. TLR2 and its associated receptors TLR1 and TLR6 are mainly involved in the detection of molecules from mycobacteria and Gram-positive bacteria (6, 7). Some PAMP, such as lipoteichoic acid (LTA), only require TLR2 (7). On the other hand, TLR1 and TLR2 together detect triacylated lipoproteins (8), whereas TLR2 associates with TLR6 to recognize diacylated lipoproteins and peptidoglycans (PGN) (9, 10). Like TLR1 and TLR6, TLR10 is highly homologous to TLR2, and is probably another TLR2-associated receptor, but its

function is still unknown (11). TLR4 is the receptor for lipopolysaccharide (LPS), a characteristic component of Gram-negative bacteria's cell wall (12). Flagellin, a protein typical of flagellated bacteria, is specifically identified by TLR5 (13). Finally, TLR3, TLR7, TLR8 and TLR9 are intracellular receptors for nucleic acids (4). Indeed, when detected in vesicular compartments where these TLR reside, RNA and DNA characterize bacterial uptake or viral infection. TLR3 recognizes double-stranded (ds)RNA, which constitute viral genome or is generated during viral replication. TLR7 and TLR8 are engaged by viral single-stranded RNA, and by synthetic small molecules mimicking features of nucleic acids, such as imiquimod and R-848. Finally, TLR9 recognizes oligodeoxynucleotides (ODN) containing unmethylated CpG motifs (CpG-ODN), which are under-represented in mammalian genomes, but abundant in viral and bacterial DNA.

Hence, TLR have the capacity to directly initiate maturation of DC exposed to potentially pathogenic microorganisms (2). Interestingly, in humans, striking differences exist in TLR expression from one DC subset to another. In the blood, DC of myeloid origin (mDC) display TLR1-6, TLR8, TLR10, and low levels of TLR7, whereas plasmacytoid DC (pDC), which are the main producers of type I Interferons (IFNs) following viral challenge, only express TLR1, TLR6, TLR10, and very high levels of TLR7 and TLR9 (14-17). This restricts their reactivity to a defined pattern of PAMP and, consequently, pathogens.

The distribution of TLR in human skin is incompletely defined. Several studies demonstrated that keratinocytes differentiated in vitro display TLR and respond to corresponding PAMP by producing proinflammatory cytokines (18-22). Some discrepancies remain, though, which likely result from differences in culture conditions. On the other hand, the TLR expression pattern of freshly isolated human LC has never been systematically examined (23). Moreover, since ex vivo purification of LC by positive selection of CD1a⁺ cells from human skin is sufficient to drive a significant spontaneous maturation (24), it has been proven difficult to

monitor PAMP-induced maturation of fresh LC (25). In this report, we analyse the expression pattern of the 10 identified human TLR in freshly isolated LC and keratinocytes. Furthermore, an extraction procedure based on gradient density centrifugation allowed us to avoid spontaneous phenotypic maturation and to address the issue of maturation and cytokine production of LC exposed to defined PAMP known as TLR agonists.

Material and methods

Media and reagents

The medium used was RPMI 1640 with Glutamax (Invitrogen, Carlsbad, CA), supplemented with 10% heat-inactivated fetal bovine serum (FBS) (Flow Laboratories, Irvine, UK), penicillin and streptomycin (referred to as complete medium). *Staphylococcus aureus* peptidoglycan (PGN) was obtained from Fluka (Heidelberg, Germany). Poly(I:C), *Escherichia coli* lipopolysaccharide (LPS) (strain 011:B4) and *Bacillus subtilis* lipoteichoic acid (LTA) were from Invivogen (San Diego, CA). Imiquimod was purchased from Sequoia Research Products (Oxford, UK). CpG ODN 2216 was from MWG Biotech (Roissy, France). R-848 was synthesised at the Schering-Plough Research Institute (Kenilworth, NJ). PGN, LTA, imiquimod and R-848 were shown to be free of endotoxin, as determined by a Limulus-Amoebocyte Assay (BioWhittaker, Walkersville, MD).

Langerhans cells isolation from human skin

Human epidermal cell suspensions were obtained from normal skin of patients undergoing abdominal reconstructive plastic surgery after patients' informed consent and according to institutional guidelines. Skin was split-cut with a keratome set and the dermo-epidermal slices treated for 18 h at 4°C with 0.05% trypsin (Sigma-Aldrich, Heidelberg, Germany) in Hank's balanced salt solution without Ca^{2+} and Mg^{2+} (Seromed, Biochrom KG, Berlin, Germany). The epidermis was detached from the dermis with fine forceps. Epidermal cell suspensions were obtained by subsequent tissue dissociation and filtration through sterile gauze. Basal keratinocytes were removed by adhesion on collagen-coated plates (Corning-Iwaki Glass, Tokyo, Japan). Enrichment was obtained by 2 consecutive density gradient centrifugation on Lymphoprep (Nycomed Pharma, Oslo, Norway), which yielded $75.0 \pm 8.4\%$ CD1a⁺ LC based on 10 experiments. For quantitative PCR and some activation experiments, LC were further

purified by positive selection, using anti-CD1a MACS (Myltenyi Biotech, Bergisch Gladbach, Germany). The CD1a negative fraction contained suprabasal keratinocytes. The LC fraction obtained by this technique was more than 95% positive for CD1a expression.

Dendritic cells isolation from human blood

Blood samples of healthy donors were obtained according to institutional guidelines. Peripheral blood mononuclear cells were isolated by Ficoll-Hypaque centrifugation (Eurobio, Paris, France). The CD19⁺ B cells and CD14⁺ monocytes were removed from the sample by CD19 and CD14 MACS purification using MiniMACS separation columns (Milttenyi Biotech). The remaining cells were further enriched in MiniMACS columns using microbeads coated with anti-BDCA-1 or anti-BDCA-4 mAbs (BD Biosciences, Erembodegem, Belgium), thereby selecting mDC and pDC, respectively. Reanalysis of the sorted populations showed purity higher than 98%.

Analysis of TLR expression by real-time quantitative PCR

Total RNA was extracted using RNeasy Mini kit (Qiagen, Valencia, CA) and treated with DNase I (Qiagen) for 15 min at room temperature. Then RNA was reverse transcribed using a mix of random hexamer primers (Invitrogen), oligo (dT)₁₅ (Promega, Madison, WI), and Superscript II RNase-H reverse transcriptase (Invitrogen). Real-time quantitative PCR was set up in an Icyler IQ (BioRad, Hercules, CA), using Taqman Universal PCR Master Mix, no AmpErase UNG (Applied Biosystems, Foster City, CA), in a final volume of 25 µL (0.4 µM of each primer, 0.2 µM TaqMan probe and 25 ng cDNA). Experiments were performed in triplicates. Primers and probes of TLR and CD4 promoter were designed using Primer 3 software (Whitehead Institute, Cambridge, MA), with a melting temperature of ~60°C for primers and ~70°C for probes. Sequences and dyes are detailed in Table 1. The absence of

genomic DNA contamination was controlled using human CD4 promoter probe. cDNAs were normalized to 18S ribosomal RNA (rRNA) with the Taqman Ribosomal RNA Control Reagents (Applied Biosystems). Real-time data were acquired and analysed using Iqycler IQ Optical System software (Bio-Rad) with automatic adjustment of the baseline and threshold parameters. Gene expression levels were determined using cycle threshold values, directly transferred on the PCR standard curve and transformed into copy numbers. Results are expressed as copy numbers of a specified gene for 10^5 copies of 18S ribosomal RNA.

Activation of Langerhans cells by TLR agonists

Freshly extracted LC were incubated for 24h or 48h with TLR agonists, or with CD40 ligand (CD40L) transfected L cells. Briefly, 10^5 murine Ltk⁻ fibroblastic L cells stably transfected with the human CD40L gene (26) were irradiated at 7,500 rads, then seeded together with 5×10^5 LC. Alternatively, LPS (1 μ g/mL), PGN (10 μ g/mL), LTA (10 μ g/mL), poly(I:C) (25 μ g/mL), R-848 (10 μ M), imiquimod (25 μ M), or CpG ODN 2216 (10 μ g/mL) were added to the culture medium.

Cytofluorimetric analysis

Cells were labelled with FITC-conjugated anti-CD1a, -CD86, -CD80 (Dako, Glostrup, Denmark), -CD25, -CD83, (Beckman-Coulter, Fullerton, CA). Indirect stainings with anti-DC-LAMP/CD208 (Beckman-Coulter) or anti-TLR3 (clone 713E4, Abcys, Paris, France) were revealed by goat anti-mouse IgG-FITC (Dako). For intracytoplasmic phenotyping (DC-LAMP and TLR3), cells were stained in Fix&Perm reagent (Dako), following manufacturer's instructions. Negative controls were performed with isotype-matched control antibodies. Fluorescence was determined with a FACSCAN flow-cytometer (Becton-Dickinson, Franklin Lakes, NJ), and data were analysed using the CellQuest software (Becton-Dickinson).

Cytokine production

Freshly purified LC (10^6 cells/mL) were cultured for 24h or 48h with TLR agonists at the indicated concentrations. As a control for IFN- α production, blood pDC (5×10^5 cells/mL) were incubated for 24h with 20ng/mL IL-3 (R&D Systems), or formaldehyde-inactivated influenza virus (five cases, 1 HAU/mL; strain A/New Caledonia/20/99 IVR116, Aventis-Pasteur, Val de Reuil, France). TNF- α , IL-6, IFN- α and IFN- β levels were evaluated in the cell culture supernatants using commercially available ELISA kits (TNF- α and IL-6 : R&D Systems, Minneapolis, MN; IFN- α : AbCys; IFN- β : FUJIREBIO, Tokyo, Japan). Cytokines were quantified relative to a standard curve representing a range of dilutions of recombinant cytokines. IL-10 and IL-8 levels were evaluated using CBA assays (BD Biosciences). Following acquisition of sample data by flow cytometry, results were analysed using the BD CBA analysis software. Standard curves, plotted using the mean fluorescence intensity of the beads for cytokine values ranging from 0 to 5,000 pg/ml, were used for quantifying cytokines.

Results

Isolation of immature human LC

In order to analyse LC activation, we used an isolation technique based on two consecutive density gradients, as previously described (24). This procedure permitted to obtain $75.0 \pm 8.4\%$ purity as revealed by CD1a staining. Contaminant cells appeared as large, CD1a negative cells (Figure 1A). Pluristratified epithelia such as the epidermis are constituted of basal, dividing keratinocytes and suprabasal, differentiated keratinocytes. As basal keratinocytes were previously excluded by a collagen adhesion step, contaminant cells therefore represent differentiated suprabasal keratinocytes.

Propidium iodide (PI) stainings showed that $69.1 \pm 10.1\%$ of LC cultured for 24h were viable, whereas less than 50% of LC were still viable after 48h of culture (Figure 1A and data not shown). In this context, we used 24h of maturation, and FACS results were gated on PI-negative cells.

Gradient-purified LC had an immature phenotype, as demonstrated by the lack of CD25, CD83 or CD80, and low CD86 staining at day 0. The intracellular maturation marker DC-LAMP was also absent (Figure 1B). During extraction from the skin, disruption of critical interactions of LC with keratinocytes and degradation of the extracellular matrix may be directly or indirectly sensed by LC (27). These events are probably sufficient to initiate a spontaneous maturation, which is observed after one day of culture as judged by a limited upregulation of LC surface markers. Indeed, following a 24h incubation in medium alone, expression of the maturation markers CD83 and DC-LAMP, and the costimulatory molecules CD80 and CD86 was increased (Figure 1B). Interestingly, CD25 was only slightly increased by the spontaneous maturation and was therefore of particular interest. Considering that CD86 was rapidly upregulated in the majority of LC, we based our analysis of this marker on mean fluorescence intensity rather than percentages of positive cells. Due to biological variability,

spontaneous maturation judged by the percentage of CD83⁺ cells was observed on 51.8 ± 9.2% of LC after 24h of culture. However, engagement of CD40 by CD40L-expressing fibroblasts resulted in an increased expression of costimulatory and maturation markers, showing that this modest spontaneous maturation does not preclude further activation of LC (Figure 1B).

Freshly isolated LC are devoid of TLR4, and do not directly respond to LPS

Expression of TLR by DC is a key element to explain their capacity to respond to many danger signals. The constitutive low expression of TLR proteins (28) and the poorly defined specificity of most of the commercially available antibodies against TLR proteins (personal observations) currently makes PCR the most reliable way to systematically analyse expression of these receptors. Therefore, we evaluated mRNA expression of the 10 known TLR on LC by real-time quantitative PCR, using specific primers and probes (Table 1). Of note, the high sensitivity of this technique enables to detect very low levels of TLR mRNA, which may not be sufficient to express adequate amounts of functional protein. Because the pattern of expression of functional TLR was thoroughly described in human blood mDC and pDC (14-17), we used these DC populations as a reference to determine the level of significance of PCR results. Our data regarding TLR displayed by blood DC was consistent with the literature (see below).

Because primary keratinocytes also display TLR (18, 22, 29, 30), we used magnetic beads purification of CD1a⁺ LC, and investigated TLR expression of suprabasal keratinocytes (i.e., CD1a⁻ fraction) in parallel. To avoid the strong spontaneous maturation that results from this isolation technique (reference 24, and our own unpublished data), RNA extraction was performed immediately after purification.

Direct recognition of LPS by a given cell type requires expression of TLR4 (12). Keratinocytes and mDC expressed comparable levels of TLR4 transcripts (Figure 2A), which suggests that keratinocytes, like mDC, respond to LPS (16, 31). On the other hand, no TLR4 mRNA was detected in LC and pDC (Figure 2A). To further demonstrate the absence of functional TLR4, gradient-purified LC were incubated for 24h with LPS. Even in the presence of a high dose (1µg/mL) of LPS, only marginal increases of maturation markers (CD25, CD83, DC-LAMP) and of costimulatory molecules (CD80, CD86) were consistently observed (Figure 2B). Therefore, we conclude that freshly isolated human LC are unable to directly sense LPS.

LC display TLR1, TLR2 and TLR6, and TLR2 agonists trigger LC maturation

We next investigated expression of TLR2 and its associated receptors, TLR1, TLR6 and TLR10, which are notably involved in the detection of Gram-positive bacteria (7). Real-time PCR analysis showed that LC expressed TLR1, TLR2, TLR6 and TLR10 mRNA, whereas keratinocytes displayed mRNA for TLR1, TLR2 and TLR10. Noteworthy, LC had particularly high levels of TLR1 mRNA as compared to pDC and mDC (Figure 3A), while TLR10 mRNA expression was much weaker in keratinocytes and LC than in both blood DC subsets. Expression of TLR2 mRNA in LC was weak, as compared to blood mDC, but was confirmed using different primer sets (data not shown, and reference 23). Moreover, in line with the literature, TLR2 was not detectable in pDC (14-16). Therefore, we considered the low levels of TLR2 mRNA expressed by LC as significant. This was confirmed by exposure of LC to TLR2 agonists. Indeed, we cultured gradient-purified LC for 24h in the presence of PGN and LTA, and found that TLR2 agonist PGN reproducibly upregulated expression of maturation markers, while LTA induced a weaker activation, based on CD25 staining (Figure 3B).

TLR3 is functionally expressed on purified LC

TLR3 is a receptor for double-stranded RNA (dsRNA), and is therefore thought to play a critical role in the detection of many viruses (4). Similar to Kadowaki and colleagues, who demonstrated that responsiveness of blood mDC to dsRNA correlates with TLR3 expression, we found that mDC, but not pDC, expressed high levels of this receptor (15). Strikingly, keratinocytes presented constitutive levels of TLR3 mRNA that were even higher than in mDC (Figure 4A).

TLR3 mRNA expression in highly purified LC was 10-fold higher than in the dsRNA unresponsive pDC (Figure 4A) (15). FACS analysis confirmed that TLR3 is expressed intracellularly in human LC (Figure 4B). Finally, activation assays definitively stated that LC display functional TLR3: a particularly strong increase of CD25, CD83, CD80, CD86 and DC-LAMP expression was observed following 24h of incubation with poly(I:C), a synthetic dsRNA analog (Figure 4C). Thus, LC can be directly and potently activated by viral dsRNA.

TLR7, TLR8 and TLR9 are absent from LC, while keratinocytes express TLR7

TLR7, TLR8 and TLR9 belong to a subgroup of the TLR family (32). This classification is primarily based on sequence similarity and closely related signal transduction pathways. Moreover, TLR7/8/9 are intravesicular receptors of nucleic acids (DNA- or RNA-oligonucleotides) or structurally related synthetic compounds (imiquimod, R-848).

Real-time PCR analysis revealed very low signals for TLR7 in LC; on the other hand, keratinocytes exhibited about 10 times more mRNA for this receptor, which was present at levels comparable to mDC (Figure 5A) (17). Consistent with this, the response of mDC and keratinocytes to the specific TLR7 agonist imiquimod was previously established (17, 33). TLR8 mRNA was detected in keratinocytes, LC and pDC at comparable intensities (Figure

5A). Nevertheless, pDC were frequently demonstrated to be devoid of TLR8 (14-17), and a TLR8-specific agonist is unable to activate pDC (34). Consequently, we considered the low levels of TLR8 expressed by keratinocytes and LC as non significant. Finally, the last member of this subgroup, TLR9, was not detected in LC by real-time PCR, and keratinocytes expressed TLR9 mRNA at levels similar to mDC, which are known to be unresponsive to CpG-ODN (14-17) (Figure 5A).

We next used activation assays to further establish the absence of functional TLR7, TLR8 and TLR9 in LC. For this purpose, we used synthetic agonists specific for TLR7 (imiquimod), for both TLR7 and TLR8 (R-848), or for TLR9 (CpG ODN 2216). As expected, expression of maturation markers was equivalent in LC cultured in medium alone or incubated with imiquimod, R-848, or CpG (Figure 5B), thereby revealing that these cells do not express functional TLR7, TLR8 or TLR9 proteins.

LC produce cytokines following activation through TLR2 and TLR3

PAMP-driven maturation of DC is usually concomitant with the production of cytokines and chemokines (1, 2). Therefore, we examined the production of soluble factors induced by TLR ligands in gradient-purified LC, in order to address possible differences in their respective activation capacity.

LC released substantial amounts of IL-6 when stimulated with PGN, LTA, and, even more potently, poly(I:C) (Figure 6A). A modest secretion of IL-6 was detected following treatment of gradient-purified LC with LPS and imiquimod. As LC do not undergo noticeable maturation in response to these ligands, this low IL-6 production might be attributable to the few contaminating keratinocytes, which express high levels of TLR4 and TLR7. Indeed, no more IL-6 production could be observed in response to LPS and imiquimod when using MACS-purified LC (Figure 6B). Treatment with poly(I:C), LPS or imiquimod treatment did

not stimulate IL-10 production (Figure 6C). Interestingly, production of IL-10 was induced by PGN, but not LTA, although recognition of both compounds relies on TLR2.

IL-8 and TNF- α can be secreted by LC, but they are also strongly induced in activated keratinocytes (18-22, 31, 33, 35). We showed that both keratinocytes and LC express TLR2 and TLR3, and might therefore secrete cytokines in response to the same agonists. Thus, evaluation of IL-8 and TNF- α secretion was performed on LC enriched by CD1a MACS rather than gradient purification. MACS-purified LC produced high constitutive levels of IL-8 when cultured in medium alone (Figure 7A), which is most likely related to their spontaneous maturation. Yet, a notable increase in IL-8 could be induced upon PGN, LTA or poly(I:C) exposure. We also noticed that only poly(I:C) stimulated production of TNF- α (Figure 7B).

In addition, neither CD40 triggering nor TLR agonists were able to drive production of IL-1 β and, most interestingly, bioactive IL-12p70 (data not shown). Finally, as type I IFNs are of critical importance in the context of viral infections, we evaluated the production of IFN- α and IFN- β by LC exposed to poly(I:C) (Table 2). However, we were unable to detect significant concentrations of these mediators in the supernatants of activated LC.

Discussion

To date, pathogen-derived molecules that directly drive maturation of human LC through activation of TLR are insufficiently characterized (25). Our systematic PCR analysis of LC freshly isolated from human skin reveals expression of TLR1, TLR2, TLR3, TLR6 and TLR10, as well as low levels of TLR5 mRNA (data not shown). In parallel, human suprabasal keratinocytes display TLR1-5, TLR7 and TLR10 mRNA. These TLR expression patterns, extended by LC activation assays performed with defined TLR agonists, shed light on the role of LC and keratinocytes in human skin exposed to potentially pathogenic microorganisms.

Gram-positive bacteria represent the majority of commensal microorganisms that colonize the skin of healthy individuals, but also the bulk of virulent species developing on wounded skin and causing severe skin infections (36). PGN and LTA, which are characteristic PAMP shared by all Gram-positive bacteria, trigger maturation of fresh human LC and enhance IL-6 and IL-8 release. Interestingly, PGN is the only TLR agonist inducing IL-10 production. This differential effect might be explained by the fact that, while both PGN and LTA engage TLR2, activation by PGN requires cooperation of TLR6 (9, 10), which is highly expressed in LC. In line with our results, a strong IL-10 production was found to be a hallmark of human DC stimulated with PGN (37). IL-10 inhibits APC function and migration of LC, most likely because it modulates proinflammatory cytokines secretions that enhance LC maturation (37-39). For this reason, we hypothesize that IL-10 could be required to avoid immune responses to commensal bacteria. Discrimination between unarmful and pathogenic Gram-positive bacteria may result from the level of PGN detection. Indeed, PGN from commensal bacteria is only available to extracellular TLR2 and TLR6 (10, 23), similar to our in vitro assays. On the other hand, virulent *S. aureus* have an invasive phenotype and release PGN intracellularly, where it could engage the cytoplasmic NOD receptors, present in other DC subsets (40). Alternatively, IL-10 may keep immune responses under control, thereby preventing organ

injuries. Indeed, while murine DC activated by *S. aureus* PGN produce high amounts of IL-10 (41), resistance of TLR2^{-/-} mice to *S. aureus* infections is severely impaired (42).

Human skin may also be exposed to Gram-negative bacteria, although they are not resident and are rarely responsible for infections (36). Murine LC migrate following skin exposure to LPS and have been suggested to express TLR4 (43, 44), but in vitro activation assays show poor correlation with these findings (43). Accordingly, and in line with earlier observations (23, 25), no TLR4 transcripts are present in human LC, and only negligible maturation is achieved upon treatment with high doses of LPS in vitro.

To determine a role of human LC in the detection of viruses, we investigated TLR3, TLR7/8 and TLR9, which are receptors for viral nucleic acids, and have been frequently highlighted for their capacity of inducing production of type I IFNs, a critical set of cytokines with direct effects on viral replication. We did not study expression of the cytoplasmic dsRNA receptors RIG-I and PKR, whose expression pattern in the skin is unknown so far (4). Freshly purified human LC displayed TLR3 mRNA, similar to murine LC (43, 45), as well as intracellular TLR3 protein. Consequently, poly(I:C) very strongly matured gradient-purified LC, and augmented IL-6 secretion more potently than other TLR agonists. This is probably due to the unique ability of dsRNA to induce TNF- α , which likely amplifies LC response. Nevertheless, poly(I:C)-stimulated LC do not release type I IFNs. Hence, in contrast to pDC which produce high amounts of type I IFNs, human LC do not act as innate effector cells in viral infections.

Epicutaneous application of imiquimod, a specific agonist of TLR7, induces emigration of LC (46, 47) and strong immune responses, which have been proven efficient for the treatment of viral infection and cancers (48). Yet, we provide the first report of the absence of TLR7 and TLR8 in freshly isolated human LC, in line with lack of TLR7 in murine LC (43). Our findings explain and extend previous observations showing that human LC do not mature after exposure to imiquimod and R-848 in vitro (49). Regarding TLR9, mRNA has been

described in purified murine LC (43), and CpG ODN trigger migration and activation of these cells in vivo (50, 51). However, activation of purified murine LC by CpG ODN could not be achieved in vitro (43). Likewise, freshly isolated human LC show no direct response to CpG ODN, consistent with their lack of TLR9, and keratinocytes do not express TLR9 either. Thus, we propose that, in vivo, deep penetration of imiquimod cream into the dermis and subcutaneous injections of CpG ODN activate non-epidermal cells, such as dermal DC, macrophages and fibroblasts, the migration of LC being secondary to a release of proinflammatory cytokines. However, this hypothesis remains to be specifically evaluated.

Thus, the detection of pathogen invasion through LPS and ssRNA is not a primary function of LC, thereby suggesting a role for keratinocytes in the recognition of these PAMP. Earlier publications describing TLR in keratinocytes mainly relied on undifferentiated basal epidermal cells, isolated from foreskin, and differentiated after long periods of in vitro culture, which resulted in discrepancies (18-22). Here we definitively state that suprabasal keratinocytes directly isolated from human skin notably display TLR4 and TLR7. Although other investigators could not detect the latter (22, 35), in vitro-cultured keratinocytes stimulated by TLR4 or TLR7 ligands increase transcription and release of proinflammatory mediators (22, 31, 33, 35). In line with this, LPS and imiquimod triggered IL-6 release only in keratinocyte-contaminated preparations of gradient-enriched LC. Yet, isolated suprabasal keratinocytes did not produce TNF- α when exposed to TLR agonists, presumably because their advanced state of differentiation precludes full activation in vitro (data not shown). Still, keratinocyte-induced inflammation in vivo probably results in maturation and migration of LC, as well as attraction of other immune cells (52, 53). Keratinocytes could therefore substitute to LC for the primary detection of LPS and ssRNA, and also, because they express high levels of TLR3, enhance dsRNA-induced LC maturation.

In summary, freshly purified human LC express a restricted set of functional TLR, namely TLR2, TLR6 and TLR3, and are directly activated by their respective ligands, while cooperation of keratinocytes and other cell types is probably essential for response to Gram-negative bacteria and viruses in vivo. In particular, lack of type I IFN production precludes a direct effector role of LC in viral infections, and further argues that the full development of an immune response in the skin does not solely rely on these cells. Of interest, activation of LC by different TLR agonists leads to specific cytokine secretion profiles. Although the exact physiological relevance of PGN-specific IL-10 secretion remains to be determined, LC may contribute to the tolerance of commensal Gram-positive bacteria that colonize the skin of healthy individuals without causing inflammation. As no bioactive IL-12p70 was observed following TLR engagement alone, the release of this key Th1-polarizing cytokine may require additional signals provided by PAMP combinations or engagement of CD40 by T cells, as previously suggested for LC and other DC subsets (25, 54, 55). In this context, it will be of critical importance to decipher the functional influence of differential PAMP-driven activation of LC on the tuning of skin immune responses, and particularly on T cell responses.

Acknowledgments

We wish to thank Dr. E. Weill and his clinical staff in Lyon, who provided us with skin samples. We also thank Pr. A. Claudy, Dr N. Bendriss-Vermare and Dr. N. Romani for their helpful comments. The authors have no conflicting financial interest.

References

1. Banchereau, J., F. Briere, C. Caux, J. Davoust, S. Lebecque, Y. J. Liu, B. Pulendran, and K. Palucka. 2000. Immunobiology of dendritic cells. *Annu Rev Immunol* 18:767-811.
2. Iwasaki, A., and R. Medzhitov. 2004. Toll-like receptor control of the adaptive immune responses. *Nat Immunol* 5:987-995.
3. O'Neill, L. A. 2004. TLRs: Professor Mechnikov, sit on your hat. *Trends Immunol* 25:687-693.
4. Kawai, T., and S. Akira. 2006. Innate immune recognition of viral infection. *Nat Immunol* 7:131-137.
5. Akira, S., and K. Takeda. 2004. Toll-like receptor signalling. *Nat Rev Immunol* 4:499-511.
6. Underhill, D. M., A. Ozinsky, K. D. Smith, and A. Aderem. 1999. Toll-like receptor-2 mediates mycobacteria-induced proinflammatory signaling in macrophages. *Proc Natl Acad Sci U S A* 96:14459-14463.
7. Schwandner, R., R. Dziarski, H. Wesche, M. Rothe, and C. J. Kirschning. 1999. Peptidoglycan- and lipoteichoic acid-induced cell activation is mediated by toll-like receptor 2. *J Biol Chem* 274:17406-17409.
8. Takeuchi, O., S. Sato, T. Horiuchi, K. Hoshino, K. Takeda, Z. Dong, R. L. Modlin, and S. Akira. 2002. Cutting edge: role of Toll-like receptor 1 in mediating immune response to microbial lipoproteins. *J Immunol* 169:10-14.
9. Ozinsky, A., D. M. Underhill, J. D. Fontenot, A. M. Hajjar, K. D. Smith, C. B. Wilson, L. Schroeder, and A. Aderem. 2000. The repertoire for pattern recognition of pathogens by the innate immune system is defined by cooperation between toll-like receptors. *Proc Natl Acad Sci U S A* 97:13766-13771.

10. Nakao, Y., K. Funami, S. Kikkawa, M. Taniguchi, M. Nishiguchi, Y. Fukumori, T. Seya, and M. Matsumoto. 2005. Surface-Expressed TLR6 Participates in the Recognition of Diacylated Lipopeptide and Peptidoglycan in Human Cells. *J Immunol* 174:1566-1573.
11. Hasan, U., C. Chaffois, C. Gaillard, V. Saulnier, E. Merck, S. Tancredi, C. Guet, F. Briere, J. Vlach, S. Lebecque, G. Trinchieri, and E. E. Bates. 2005. Human TLR10 Is a Functional Receptor, Expressed by B Cells and Plasmacytoid Dendritic Cells, Which Activates Gene Transcription through MyD88. *J Immunol* 174:2942-2950.
12. Qureshi, S. T., L. Lariviere, G. Leveque, S. Clermont, K. J. Moore, P. Gros, and D. Malo. 1999. Endotoxin-tolerant mice have mutations in Toll-like receptor 4 (Tlr4). *J Exp Med* 189:615-625.
13. Hayashi, F., K. D. Smith, A. Ozinsky, T. R. Hawn, E. C. Yi, D. R. Goodlett, J. K. Eng, S. Akira, D. M. Underhill, and A. Aderem. 2001. The innate immune response to bacterial flagellin is mediated by Toll-like receptor 5. *Nature* 410:1099-1103.
14. Jarrossay, D., G. Napolitani, M. Colonna, F. Sallusto, and A. Lanzavecchia. 2001. Specialization and complementarity in microbial molecule recognition by human myeloid and plasmacytoid dendritic cells. *Eur J Immunol* 31:3388-3393.
15. Kadowaki, N., S. Ho, S. Antonenko, R. W. Malefyt, R. A. Kastelein, F. Bazan, and Y. J. Liu. 2001. Subsets of human dendritic cell precursors express different toll-like receptors and respond to different microbial antigens. *J Exp Med* 194:863-869.
16. Krug, A., A. Towarowski, S. Britsch, S. Rothenfusser, V. Hornung, R. Bals, T. Giese, H. Engelmann, S. Endres, A. M. Krieg, and G. Hartmann. 2001. Toll-like receptor expression reveals CpG DNA as a unique microbial stimulus for plasmacytoid dendritic cells which synergizes with CD40 ligand to induce high amounts of IL-12. *Eur J Immunol* 31:3026-3037.

17. Ito, T., R. Amakawa, T. Kaisho, H. Hemmi, K. Tajima, K. Uehira, Y. Ozaki, H. Tomizawa, S. Akira, and S. Fukuhara. 2002. Interferon-alpha and interleukin-12 are induced differentially by Toll-like receptor 7 ligands in human blood dendritic cell subsets. *J Exp Med* 195:1507-1512.
18. Kawai, K., H. Shimura, M. Minagawa, A. Ito, K. Tomiyama, and M. Ito. 2002. Expression of functional Toll-like receptor 2 on human epidermal keratinocytes. *J Dermatol Sci* 30:185-194.
19. Song, P. I., Y. M. Park, T. Abraham, B. Harten, A. Zivony, N. Neparidze, C. A. Armstrong, and J. C. Ansel. 2002. Human keratinocytes express functional CD14 and toll-like receptor 4. *J Invest Dermatol* 119:424-432.
20. Mempel, M., V. Voelcker, G. Kollisch, C. Plank, R. Rad, M. Gerhard, C. Schnopp, P. Fraunberger, A. K. Walli, J. Ring, D. Abeck, and M. Ollert. 2003. Toll-like receptor expression in human keratinocytes: nuclear factor kappaB controlled gene activation by *Staphylococcus aureus* is toll-like receptor 2 but not toll-like receptor 4 or platelet activating factor receptor dependent. *J Invest Dermatol* 121:1389-1396.
21. Pivarsci, A., L. Bodai, B. Rethi, A. Kenderessy-Szabo, A. Koreck, M. Szell, Z. Beer, Z. Bata-Csorgoo, M. Magocsi, E. Rajnavolgyi, A. Dobozy, and L. Kemeny. 2003. Expression and function of Toll-like receptors 2 and 4 in human keratinocytes. *Int Immunol* 15:721-730.
22. Kollisch, G., B. N. Kalali, V. Voelcker, R. Wallich, H. Behrendt, J. Ring, S. Bauer, T. Jakob, M. Mempel, and M. Ollert. 2005. Various members of the Toll-like receptor family contribute to the innate immune response of human epidermal keratinocytes. *Immunology* 114:531-541.
23. Takeuchi, J., E. Watari, E. Shinya, Y. Norose, M. Matsumoto, T. Seya, M. Sugita, S. Kawana, and H. Takahashi. 2003. Down-regulation of Toll-like receptor expression in

- monocyte-derived Langerhans cell-like cells: implications of low-responsiveness to bacterial components in the epidermal Langerhans cells. *Biochem Biophys Res Commun* 306:674-679.
24. Tchou, I., O. Sabido, C. Lambert, L. Misery, O. Garraud, and C. Genin. 2003. Technique for obtaining highly enriched, quiescent immature Langerhans cells suitable for ex vivo assays. *Immunol Lett* 86:7-14.
 25. Peiser, M., R. Wanner, and G. Kolde. 2004. Human epidermal Langerhans cells differ from monocyte-derived Langerhans cells in CD80 expression and in secretion of IL-12 after CD40 cross-linking. *J Leukoc Biol* 76:616-622.
 26. van Kooten, C., C. Gaillard, J. P. Galizzi, P. Hermann, F. Fossiez, J. Banchereau, and D. Blanchard. 1994. B cells regulate expression of CD40 ligand on activated T cells by lowering the mRNA level and through the release of soluble CD40. *Eur J Immunol* 24:787-792.
 27. Termeer, C., J. P. Sleeman, and J. C. Simon. 2003. Hyaluronan--magic glue for the regulation of the immune response? *Trends Immunol* 24:112-114.
 28. Zhong, F., W. Cao, E. Chan, P. N. Tay, F. F. Cahya, H. Zhang, and J. Lu. 2005. Deviation from major codons in the Toll-like receptor genes is associated with low Toll-like receptor expression. *Immunology* 114:83-93.
 29. Baker, B. S., J. M. Ovigine, A. V. Powles, S. Corcoran, and L. Fry. 2003. Normal keratinocytes express Toll-like receptors (TLRs) 1, 2 and 5: modulation of TLR expression in chronic plaque psoriasis. *Br J Dermatol* 148:670-679.
 30. Curry, J. L., J. Z. Qin, B. Bonish, R. Carrick, P. Bacon, J. Panella, J. Robinson, and B. J. Nickoloff. 2003. Innate immune-related receptors in normal and psoriatic skin. *Arch Pathol Lab Med* 127:178-186.

31. Kock, A., T. Schwarz, R. Kimbauer, A. Urbanski, P. Perry, J. C. Ansel, and T. A. Luger. 1990. Human keratinocytes are a source for tumor necrosis factor alpha: evidence for synthesis and release upon stimulation with endotoxin or ultraviolet light. *J Exp Med* 172:1609-1614.
32. Wagner, H. 2004. The immunobiology of the TLR9 subfamily. *Trends Immunol* 25:381-386.
33. Kono, T., S. Kondo, S. Pastore, G. M. Shivji, M. A. Tomai, R. C. McKenzie, and D. N. Sauder. 1994. Effects of a novel topical immunomodulator, imiquimod, on keratinocyte cytokine gene expression. *Lymphokine Cytokine Res* 13:71-76.
34. Gorden, K. B., K. S. Gorski, S. J. Gibson, R. M. Kedl, W. C. Kieper, X. Qiu, M. A. Tomai, S. S. Alkan, and J. P. Vasilakos. 2005. Synthetic TLR Agonists Reveal Functional Differences between Human TLR7 and TLR8. *J Immunol* 174:1259-1268.
35. Fujisawa, H., G. M. Shivji, S. Kondo, B. Wang, M. A. Tomai, R. L. Miller, and D. N. Sauder. 1996. Effect of a novel topical immunomodulator, S-28463, on keratinocyte cytokine gene expression and production. *J Interferon Cytokine Res* 16:555-559.
36. Chiller, K., B. A. Selkin, and G. J. Murakawa. 2001. Skin microflora and bacterial infections of the skin. *J Investig Dermatol Symp Proc* 6:170-174.
37. Re, F., and J. L. Strominger. 2004. IL-10 released by concomitant TLR2 stimulation blocks the induction of a subset of Th1 cytokines that are specifically induced by TLR4 or TLR3 in human dendritic cells. *J Immunol* 173:7548-7555.
38. Enk, A. H., V. L. Angeloni, M. C. Udey, and S. I. Katz. 1993. Inhibition of Langerhans cell antigen-presenting function by IL-10. A role for IL-10 in induction of tolerance. *J Immunol* 151:2390-2398.

39. Wang, B., L. Zhuang, H. Fujisawa, G. A. Shinder, C. Feliciani, G. M. Shivji, H. Suzuki, P. Amerio, P. Toto, and D. N. Sauder. 1999. Enhanced epidermal Langerhans cell migration in IL-10 knockout mice. *J Immunol* 162:277-283.
40. Inohara, Chamaillard, C. McDonald, and G. Nunez. 2005. NOD-LRR proteins: role in host-microbial interactions and inflammatory disease. *Annu Rev Biochem* 74:355-383.
41. Qi, H., T. L. Denning, and L. Soong. 2003. Differential induction of interleukin-10 and interleukin-12 in dendritic cells by microbial toll-like receptor activators and skewing of T-cell cytokine profiles. *Infect Immun* 71:3337-3342.
42. Takeuchi, O., K. Hoshino, and S. Akira. 2000. Cutting edge: TLR2-deficient and MyD88-deficient mice are highly susceptible to *Staphylococcus aureus* infection. *J Immunol* 165:5392-5396.
43. Mitsui, H., T. Watanabe, H. Saeki, K. Mori, H. Fujita, Y. Tada, A. Asahina, K. Nakamura, and K. Tamaki. 2004. Differential expression and function of Toll-like receptors in Langerhans cells: comparison with splenic dendritic cells. *J Invest Dermatol* 122:95-102.
44. Roake, J. A., A. S. Rao, P. J. Morris, C. P. Larsen, D. F. Hankins, and J. M. Austyn. 1995. Dendritic cell loss from nonlymphoid tissues after systemic administration of lipopolysaccharide, tumor necrosis factor, and interleukin 1. *J Exp Med* 181:2237-2247.
45. Fujita, H., A. Asahina, H. Mitsui, and K. Tamaki. 2004. Langerhans cells exhibit low responsiveness to double-stranded RNA. *Biochem Biophys Res Commun* 319:832-839.
46. Suzuki, H., B. Wang, G. M. Shivji, P. Toto, P. Amerio, M. A. Tomai, R. L. Miller, and D. N. Sauder. 2000. Imiquimod, a topical immune response modifier, induces migration of Langerhans cells. *J Invest Dermatol* 114:135-141.

47. Michalopoulos, P., N. Yawalkar, M. Bronnimann, A. Kappeler, and L. R. Braathen. 2004. Characterization of the cellular infiltrate during successful topical treatment of lentigo maligna with imiquimod. *Br J Dermatol* 151:903-906.
48. Dockrell, D. H., and G. R. Kinghorn. 2001. Imiquimod and resiquimod as novel immunomodulators. *J Antimicrob Chemother* 48:751-755.
49. Burns, R. P., Jr., B. Ferbel, M. Tomai, R. Miller, and A. A. Gaspari. 2000. The imidazoquinolines, imiquimod and R-848, induce functional, but not phenotypic, maturation of human epidermal Langerhans' cells. *Clin Immunol* 94:13-23.
50. Ban, E., L. Dupre, E. Hermann, W. Rohn, C. Vendeville, B. Quatannens, P. Ricciardi-Castagnoli, A. Capron, and G. Riveau. 2000. CpG motifs induce Langerhans cell migration in vivo. *Int Immunol* 12:737-745.
51. Jakob, T., P. S. Walker, A. M. Krieg, M. C. Udey, and J. C. Vogel. 1998. Activation of cutaneous dendritic cells by CpG-containing oligodeoxynucleotides: a role for dendritic cells in the augmentation of Th1 responses by immunostimulatory DNA. *J Immunol* 161:3042-3049.
52. Lebre, M. C., J. C. Antons, P. Kalinski, J. H. Schuitemaker, T. M. van Capel, M. L. Kapsenberg, and E. C. De Jong. 2003. Double-stranded RNA-exposed human keratinocytes promote Th1 responses by inducing a Type-1 polarized phenotype in dendritic cells: role of keratinocyte-derived tumor necrosis factor alpha, type I interferons, and interleukin-18. *J Invest Dermatol* 120:990-997.
53. Berthier-Vergnes, O., F. Bermond, V. Flacher, C. Massacrier, D. Schmitt, and J. Peguet-Navarro. 2005. TNF-alpha enhances phenotypic and functional maturation of human epidermal Langerhans cells and induces IL-12 p40 and IP-10/CXCL-10 production. *FEBS Lett* 579:3660-3668.

54. Napolitani, G., A. Rinaldi, F. Berton, F. Sallusto, and A. Lanzavecchia. 2005. Selected Toll-like receptor agonist combinations synergistically trigger a T helper type 1-polarizing program in dendritic cells. *Nat Immunol*.
55. Schulz, O., A. D. Edwards, M. Schito, J. Aliberti, S. Manickasingham, A. Sher, and C. Reis e Sousa. 2000. CD40 triggering of heterodimeric IL-12 p70 production by dendritic cells in vivo requires a microbial priming signal. *Immunity* 13:453-462.

¹V.F. is recipient of a grant from the Fondation Marcel Mérieux.

²M.B. is recipient of a grant from the Association Nationale de Recherche sur le Sida (ANRS)

³J.V. is supported by the Association Nationale de Recherche sur le Sida (ANRS), the Sidaction, and the Société Française de Dermatologie (SFD).

⁴Address for correspondence and reprint requests : Dr. Jenny VALLADEAU, Université Claude Bernard – Lyon I, EA3732, Centre Hospitalier Edouard Herriot, Dermatologie-Pavillon R, 69437 Lyon cedex, France. E-mail address: valladeau@lyon.inserm.fr

Figure legends

Figure 1: Immature LC purified ex vivo exhibit an immature phenotype and mature following CD40 triggering.

LC were enriched by gradient purification as described in Material and methods, then analysed by flow cytometry. (A) Freshly isolated LC were gated as propidium iodide (PI)-negative, CD1a-positive cells. (B) Freshly isolated LC were stained with anti-CD25, -CD83, -CD80, -CD86, or -DC-LAMP mAbs (filled histograms), or isotype-matched negative control antibodies (open histograms). LC were also stained after 24h of culture (day 1) in medium alone or in the presence of CD40L-expressing fibroblasts. Percentages of positive cells, or mean fluorescence intensity (M) are shown in the upper right corner of histograms. Results are representative of at least 8 independent experiments.

Table 1: Sequences of primers and probes used for real-time quantitative PCR.

The quencher dye, TAMRA, was placed at the 3' end of probes. The reporter dyes, linked to the 5' end, were HEX, FAM or VIC (18S ribosomal RNA).

Figure 2: Human LC do not express TLR4, and are unresponsive to LPS.

(A) Real-time quantitative PCR for TLR4 was performed on cDNA obtained from keratinocytes, MACS-purified CD1a⁺ LC, BDCA-4⁺ blood pDC, and BDCA-1⁺ blood mDC. Results were expressed as copy numbers for 10⁵ copies of 18S ribosomal RNA. (B) Gradient purified LC were cultured in medium alone, with 1 µg/mL LPS or with CD40L-transfected L-cells. 24h later, cells were harvested and stained with anti-CD25, -CD83, -CD80, -CD86 and -DC-LAMP mAbs (filled histograms) or isotype-matched negative control antibodies (open

histograms). Percentages of positive cells, or mean fluorescence intensity (M) are shown in the upper right corner of histograms. Results are representative of 3 independent experiments.

Figure 3: Human LC express TLR2 as well as accessory receptors TLR1 and TLR6, and mature in the presence of PGN and LTA.

(A) Real-time quantitative PCR for TLR1, TLR2, TLR6 and TLR10 were performed on cDNA obtained from keratinocytes, MACS-purified CD1a⁺ LC, BDCA-4⁺ blood pDC, and BDCA-1⁺ blood mDC. Results were expressed as copy numbers for 10⁵ copies of 18S ribosomal RNA. (B) Gradient purified LC were cultured in medium alone or with 10 µg/mL PGN or 10 µg/mL LTA. 24h later, cells were harvested and stained with anti-CD25, -CD83, -CD80, -CD86 or -DC-LAMP mAbs (filled histograms) or isotype-matched negative control antibodies (open histograms). Percentages of positive cells, or mean fluorescence intensity (M) are shown in the upper right corner of histograms. Results are representative of 3 independent experiments.

Figure 4: Human LC express TLR3 and mature in the presence of poly(I:C).

(A) Real-time quantitative PCR for TLR3 was performed on cDNA obtained from keratinocytes, MACS-purified CD1a⁺ LC, BDCA-4⁺ blood pDC, and BDCA-1⁺ blood mDC. Results were expressed as copy numbers for 10⁵ copies of 18S ribosomal RNA. (B) Fresh, gradient purified LC were stained with anti-CD1a, or permeabilised and stained with anti-human TLR3 (filled histograms). Open histograms represent isotype-matched negative control antibodies. (C) Gradient purified LC were cultured in medium alone or with 25 µg/mL poly(I:C). 24h later, cells were harvested and stained with anti-CD25, -CD83, -CD80, -CD86 or -DC-LAMP mAbs (filled histograms) or isotype-matched negative control antibodies (open histograms). Percentages of positive cells, or mean fluorescence intensity (M) are shown in

the upper right corner of histograms. Results are representative of at least 5 independent experiments.

Figure 5: Human LC are devoid of TLR7, TLR8 and TLR9.

(A) Real-time quantitative PCR for TLR7, TLR8 and TLR9 were performed on cDNA obtained from keratinocytes, MACS-purified CD1a⁺ LC, BDCA-4⁺ blood pDC, and BDCA-1⁺ blood mDC. Results were expressed as copy numbers for 10⁵ copies of 18S ribosomal RNA. (B) Gradient purified LC were cultured in medium alone or with 25 μ M imiquimod (Imiq.), 10 μ M R-848, 10 μ g/ml CpG ODN 2216 (CpG) or 25 μ g/mL poly(I:C). 24h later, cells were harvested and stained as indicated with anti-CD25, -CD83, -CD80, -CD86 or -DC-LAMP mAbs (filled histograms) or isotype-matched negative control antibodies (open histograms). Percentages of positive cells, or mean fluorescence intensity (M) are shown in the upper right corner of histograms. Results are representative of at least 5 independent experiments.

Figure 6: Production of IL-6 and IL-10 by human LC activated by TLR agonists.

(A and C) Gradient purified LC were cultured in medium alone or with 10 μ g/mL PGN, 10 μ g/mL LTA, 25 μ g/mL poly(I:C), 1 μ g/mL LPS or 25 μ M imiquimod. 24h later, supernatants were harvested and cytokine production was quantified by CBA assay (A:IL-6; C:IL-10). Note that, due to low numbers of LC yielded, CBA experiments were not duplicated within each skin sample, but results are representative of at least 4 independent experiments. (B) Production of IL-6 by MACS-purified LC activated by TLR agonists was also analysed on 5 independent donors. CD1a⁺ LC were cultured in medium alone or with 25 μ g/mL poly(I:C), 1 μ g/mL LPS or 25 μ M imiquimod. 24h or 48h later, supernatants were harvested and IL-6 production was quantified by ELISA.

Figure 7: Production of IL-8 and TNF- α by human LC activated by TLR agonists.

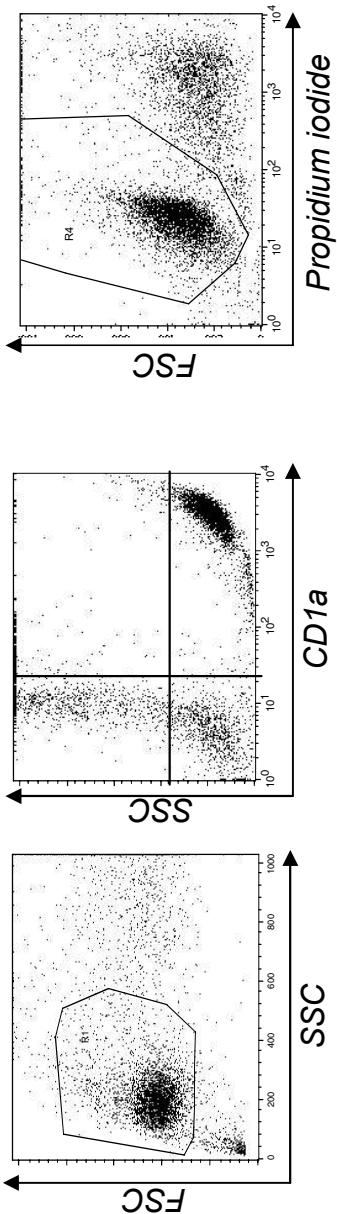
MACS-purified CD1a⁺ LC were cultured in medium alone or with 10 μ g/mL PGN, 10 μ g/mL LTA, 25 μ g/mL poly(I:C), 1 μ g/mL LPS or 10 μ M R-848. 24h later, supernatants were harvested and cytokine production was quantified by ELISA (*A*:IL-8; *B*:TNF- α). Results are representative of 3 independent experiments.

Table 2: Production of type I Interferons by human LC activated by poly(I:C).

Gradient-purified LC were cultured in medium alone or with 25 μ g/mL poly(I:C). Purified blood pDC were cultured with IL-3 (20ng/mL) or formaldehyde-inactivated influenza virus (1 HAU/mL). 24h later, supernatants were harvested and quantified for IFN- α and IFN- β production by ELISA. “n” represents the number of independent donors tested. N.D. : not determined.

Figure 1

A



B

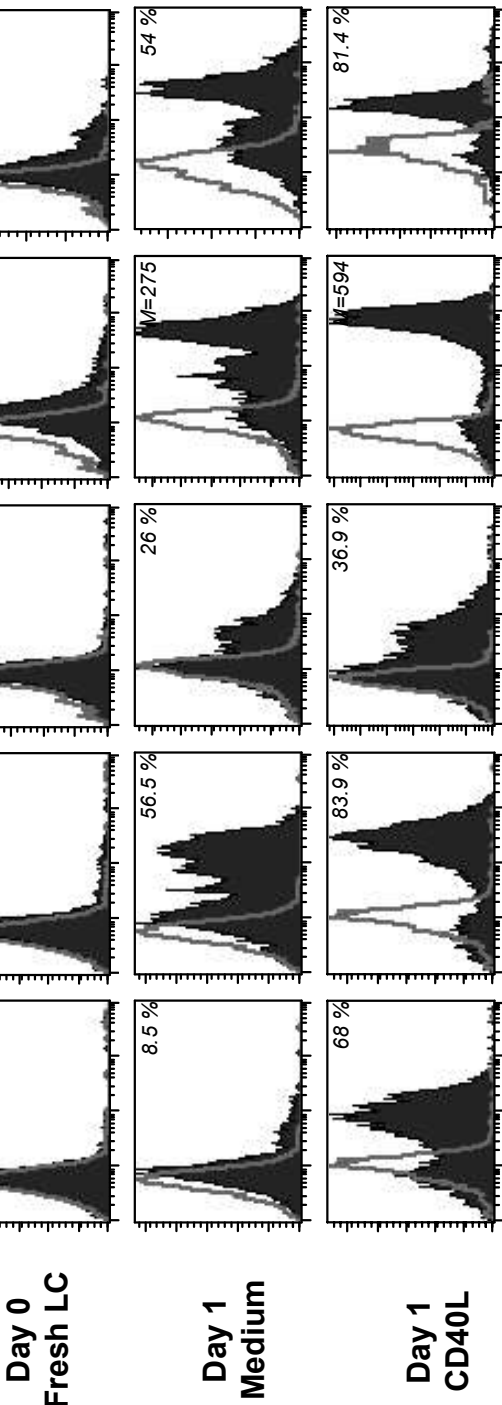
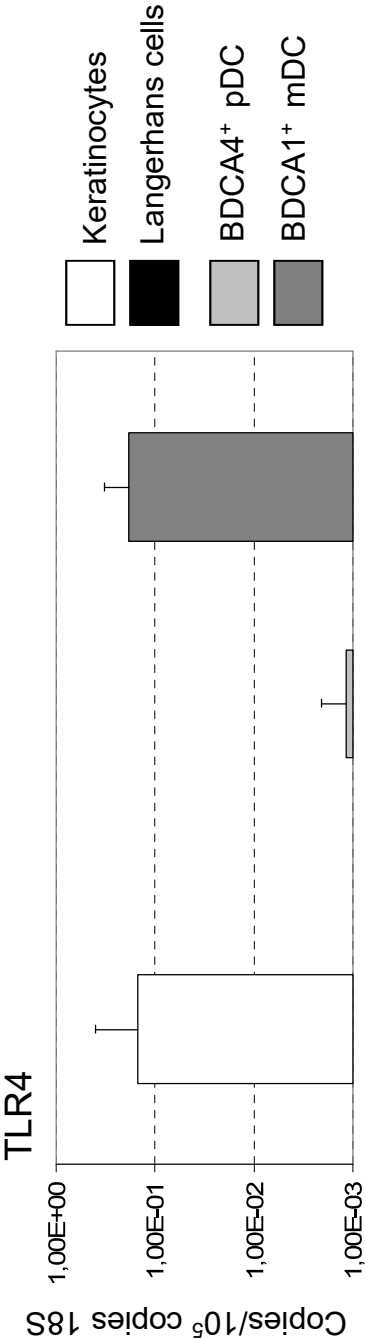


Table 1

Gene	Forward primer (5-3')	TaqMan Probe	Reverse primer (5-3')
TLR1	CCC ATT CCG CAG TAC TCC AT	[5FAM] AGC TCA AAA GTC TCA TGG CCA GGA GGA [3'TAM RA]	TTT TCC TTG GGC CAT TCC A
TLR2	CCC ATT GCT CTT TCA CTG CT	[5FAM] GTA GTT GTG GGT TGA AGC ACT GGA CAA T [3'TAM RA]	CTT CCT TGG AGA GGC TGA TG
TLR3	TGG TTG GGC CAC CTA GAA GTA	[5FAM] ACC TGG GCC TTA ATG AAA TTG GGC AA [3'TAM RA]	TCT CCA TTC CTG GCC TGT G
TLR4	CTG CAA TGG ATC AAG GAC CA	[5FAM] AGG CAG CTC TTG GTG GAA GTT GAA CG [3'TAM RA]	TTA TCT GAA GGT GTT GCA CAT TCC
TLR5	TGC CTT GAA GCC TTC AGT TAT G	[5HEX] CCA GGG CAG GTG CTT ATC TGA CCT TAA CA [3'TAM RA]	CCA CCA CCA TGA TGA GAG CA
TLR6	CCC TCA ACC ACA TAG AAA CG	[5HEX] ACC GAC TTG GAA ATG CCT GGT CAG [3'TAM RA]	GAG ATA TTC CAC AGG TTT GG
TLR7	TTA CCT GGA TGG AAA CCA GCT ACT	[5HEX] AGA TAC CGC AGG GCC TCC CGC [3'TAM RA]	TCA AGG CTG AGA AGC TGT AAG CTA
TLR8	AAC TTT CTA TGA TGC TTA CAT TTC TTA TGA C	[5HEX] CCA AAG ATG CCT CTG TTA CTG ACT GGG TG [3'TAM RA]	GGT GGT AGC GCA GCT CAT TT
TLR9	TGA AGA CTT CAG GCC CAA CTG	[5FAM] AGC ACC CTC AAC TTC ACC TTG GAT CTG TC [3'TAM RA]	TGC ACG GTC ACC AGG TTG T
TLR10	TTT GAT CTG CCC TGG TAT CTC A	[5HEX] AGG TCA ATG CAC ACA AAC ATG GCA CA [3'TAM RA]	AGT TGT TCT TGG GTT GTT TTC CTA AC
CD4 promoter	TTT CAC ACT GGG CCA CCT AT	[5FAM] CAC TGG ACA CAA TTG CCC TCA GG [3'TAM RA]	TTG TGG GCT TAC CAC TGC TG

Figure 2

A



B

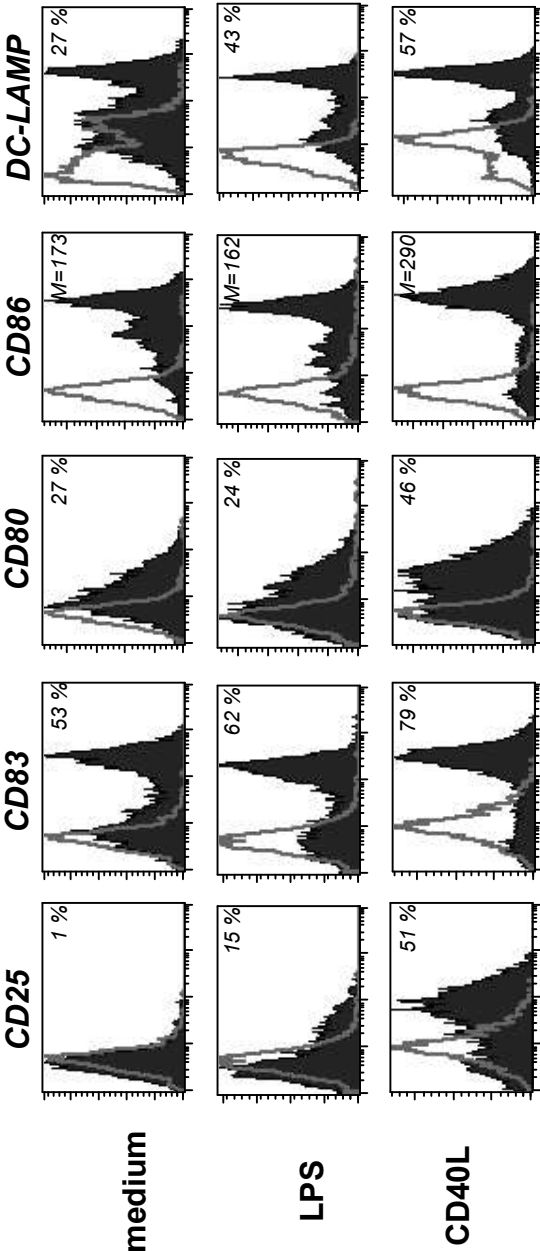


Figure 3

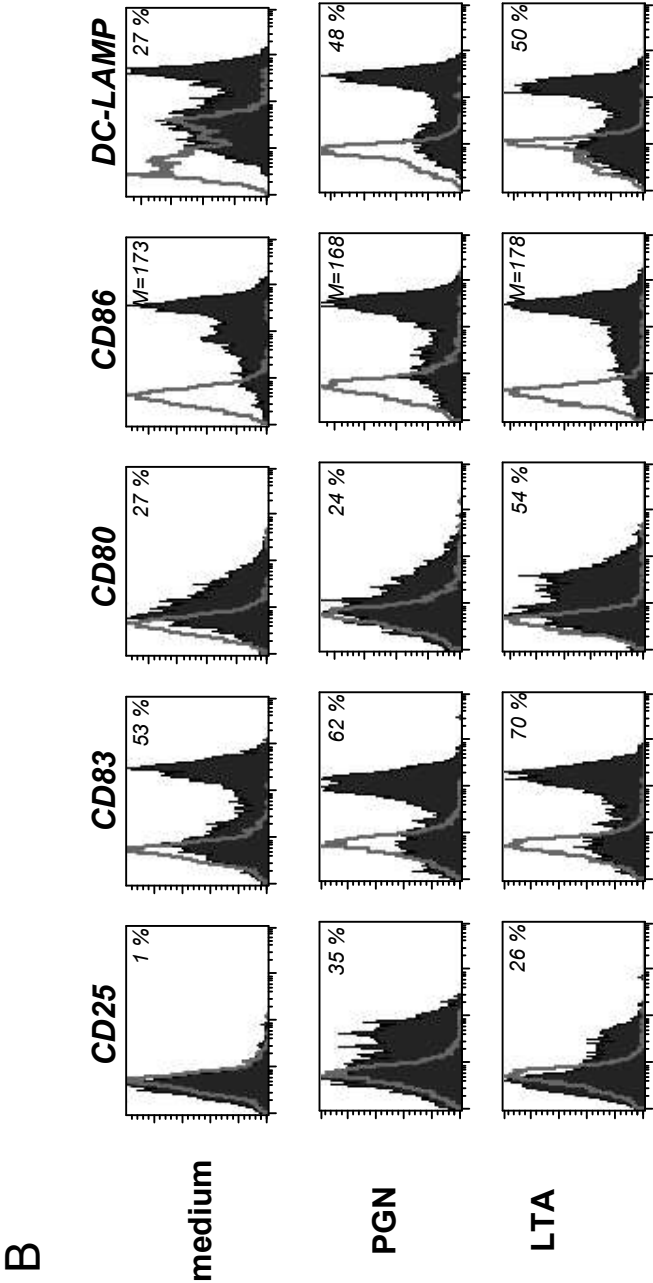
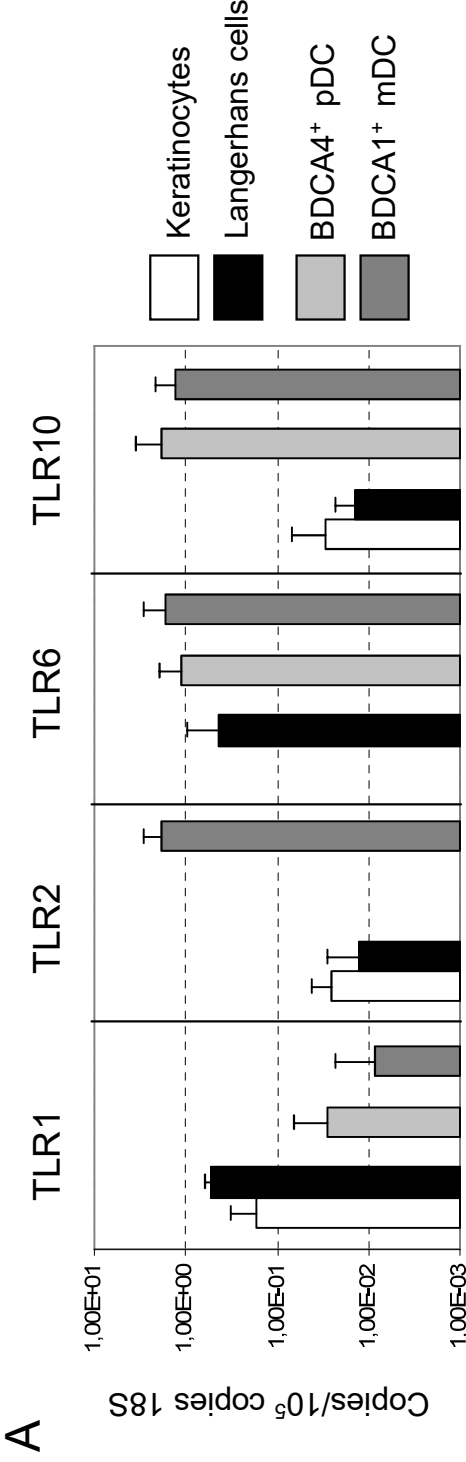


Figure 4

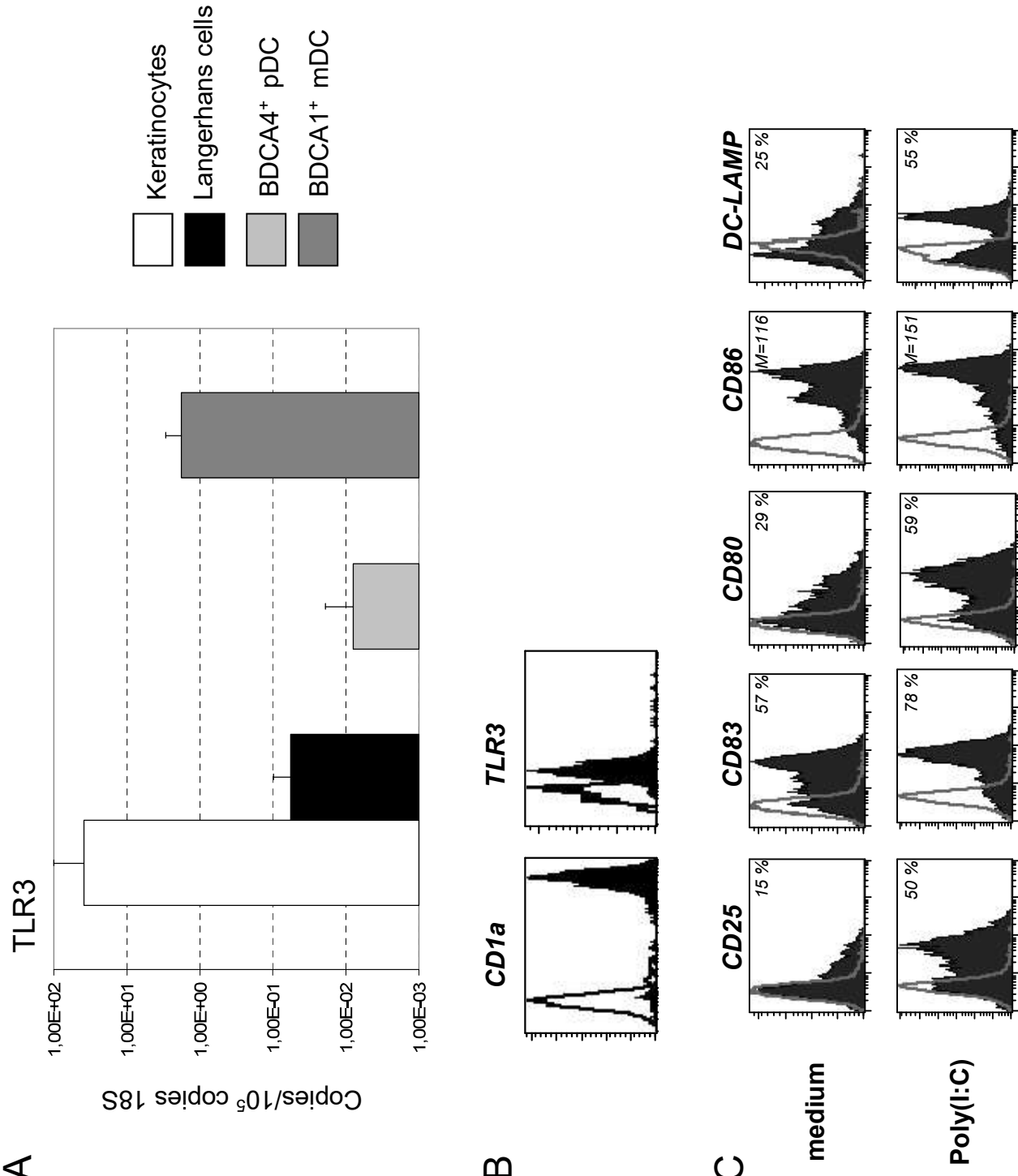
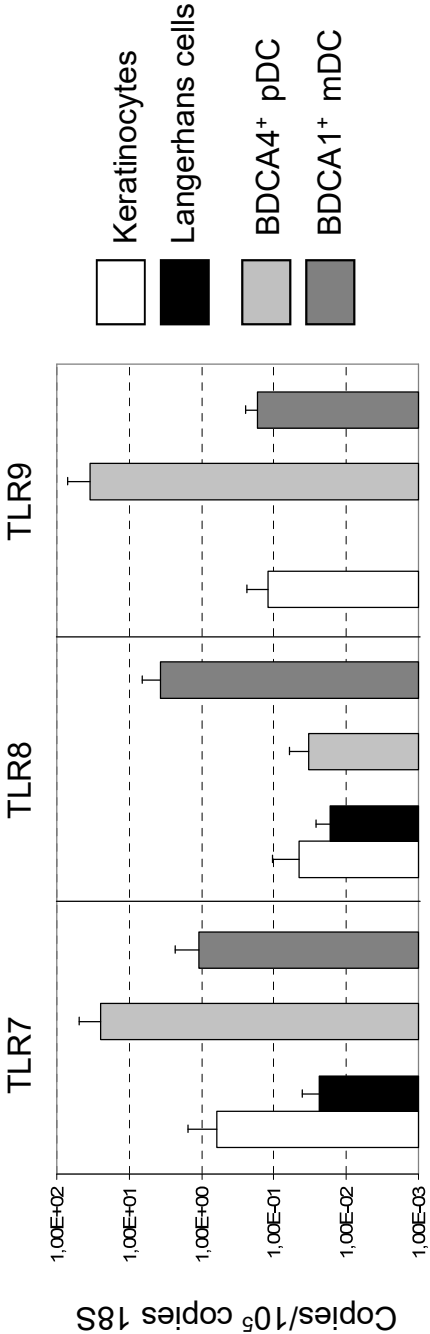


Figure 5 A



B

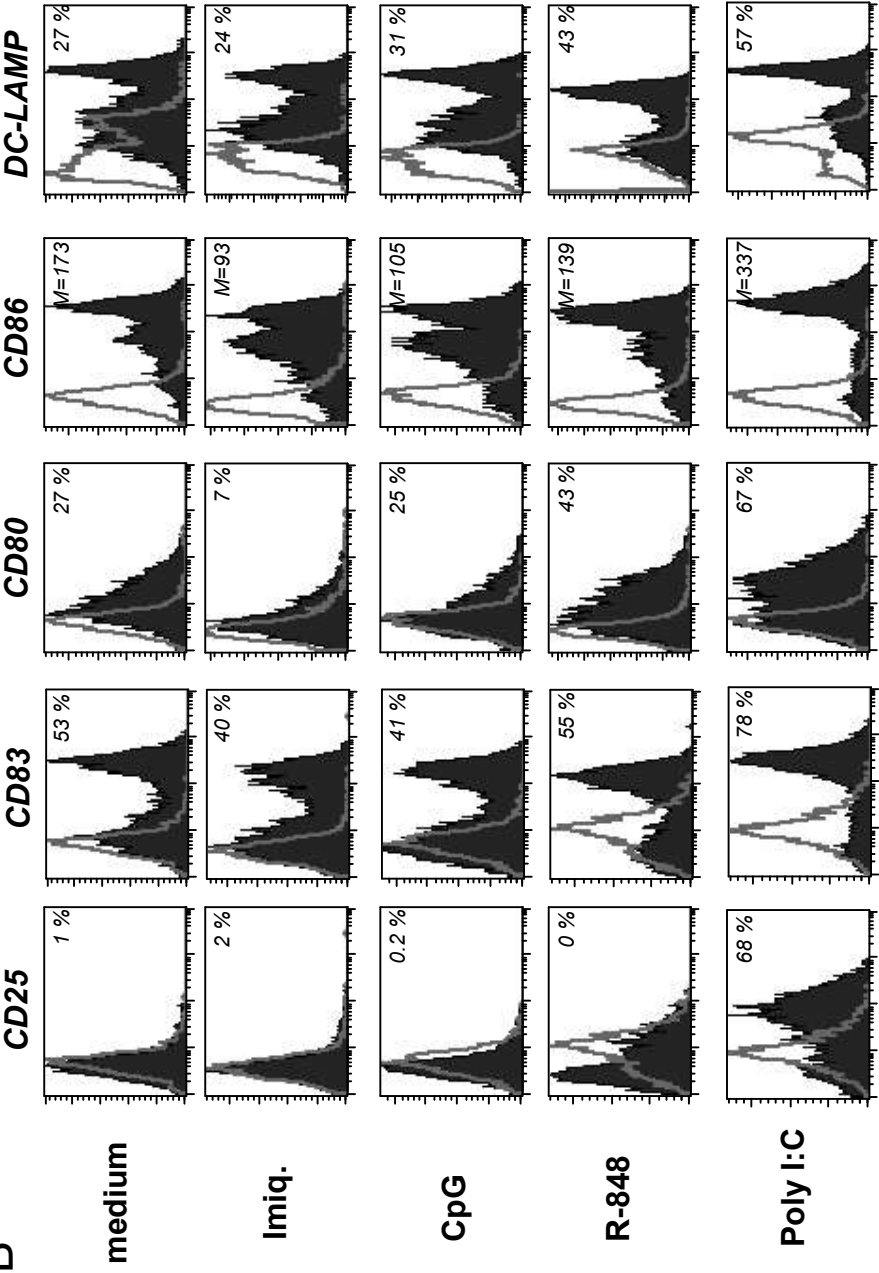
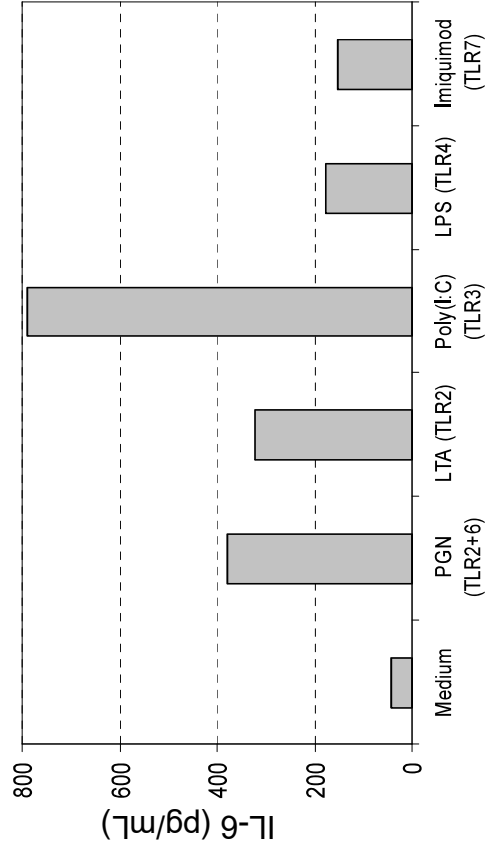
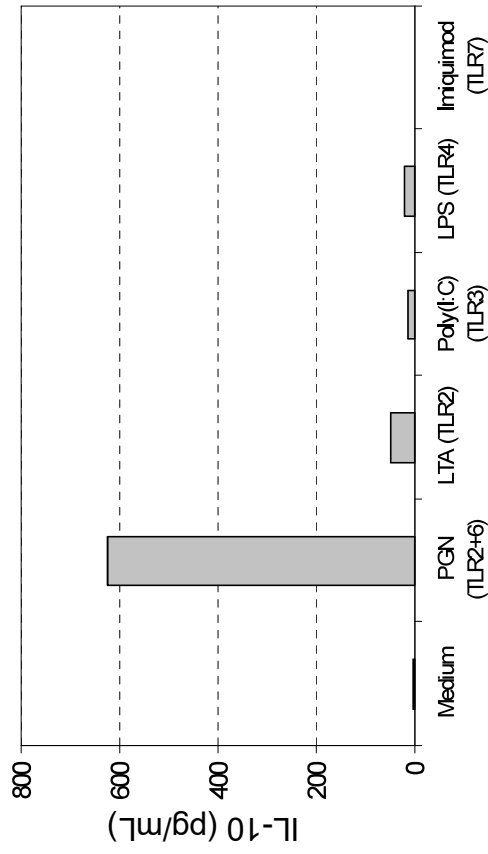


Figure 6

A



C



B

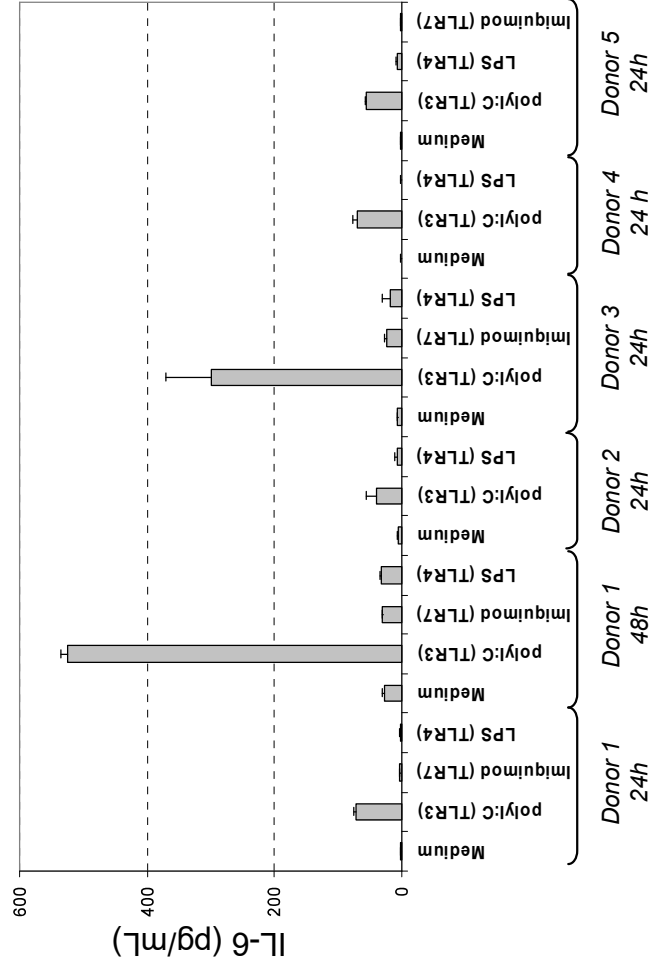


Figure 7

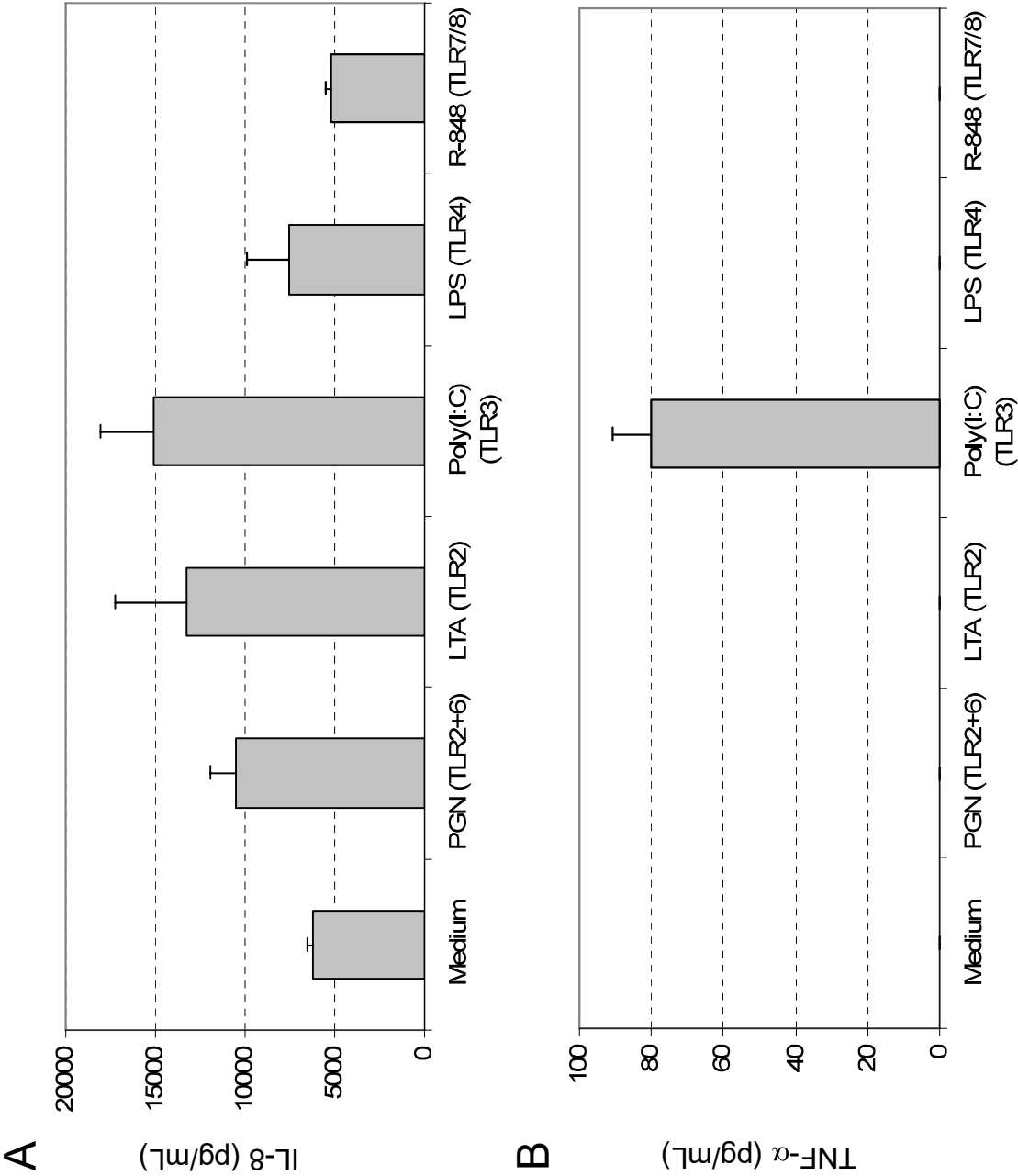


Table 2

		<i>IFN- α (pg/mL)</i>	<i>IFN- β (pg/mL)</i>
Langerhans cells (n=4)	medium poly(I:C)	<31,25 <31,25	<50 <50
Blood pDC (n=3)	IL-3 Influenza virus	<31,25 26219,4 +/- 9830,4	N.d. N.d.