



**HAL**  
open science

## Investigating the effects of climate change on structural actions

André Orcesi, Alan O'connor, Dimitris Diamantidis, Miroslav Sykora, Teng Wu, Mitsuyoshi Akiyama, Abdul Kadir Alhamid, Franziska Schmidt, Maria Pregnolato, Yue Li, et al.

► **To cite this version:**

André Orcesi, Alan O'connor, Dimitris Diamantidis, Miroslav Sykora, Teng Wu, et al.. Investigating the effects of climate change on structural actions. *Structural Engineering International*, 2022, 32 (4), pp.563-576. 10.1080/10168664.2022.2098894 . hal-03906708

**HAL Id: hal-03906708**

**<https://hal.science/hal-03906708>**

Submitted on 19 Dec 2022

**HAL** is a multi-disciplinary open access archive for the deposit and dissemination of scientific research documents, whether they are published or not. The documents may come from teaching and research institutions in France or abroad, or from public or private research centers.

L'archive ouverte pluridisciplinaire **HAL**, est destinée au dépôt et à la diffusion de documents scientifiques de niveau recherche, publiés ou non, émanant des établissements d'enseignement et de recherche français ou étrangers, des laboratoires publics ou privés.

# Investigating the effects of climate change on structural actions

André Orcesi<sup>1</sup>, Alan O'Connor<sup>2</sup>, Dimitris Diamantidis<sup>3</sup>, Miroslav Sykora<sup>4</sup>, Teng Wu<sup>5</sup>, Mitsuyoshi Akiyama<sup>6</sup>, Abdul Kadir Alhamid<sup>6</sup>, Franziska Schmidt<sup>7</sup>, Maria Pregnolato<sup>8</sup>, Yue Li<sup>9</sup>, Babak Salarieh<sup>10</sup>, Abdullahi M. Salman<sup>10</sup>, Emilio Bastidas-Arteaga<sup>11</sup>, Olga Markogiannaki<sup>12</sup>, Franck Schoefs<sup>13</sup>

1. a) Cerema, Research team ENDSUM, DTecITM/DTOA/GITEX, Champs-sur-Marne, France, b) Department MAST-EMGCU, Université Gustave Eiffel, IFSTTAR, Marne-la-Vallée, France
2. Trinity College Dublin, Ireland
3. OTH Regensburg, Germany
4. Czech Technical University in Prague, Czech Republic
5. University at Buffalo, USA
6. Waseda University, Japan
7. Department MAST-EMGCU, Université Gustave Eiffel, IFSTTAR, Marne-la-Vallée, France
8. Department of Civil Engineering, University of Bristol, Bristol, UK
9. Case Western Reserve University, USA
10. Department of Civil & Environmental Engineering, The University of Alabama in Huntsville, Huntsville, AL, U.S.A
11. LaSIE UMR CNRS 7356, La Rochelle University, La Rochelle, France
12. University of Western Macedonia, Greece
13. GeM /IUML, CNRS UMR 6183/FR 3473, Nantes Université, Ecole Centrale de Nantes, F44322 Nantes, France

## Abstract

The changing climate with resulting more extreme weather events will likely impact infrastructure assets and services. This phenomenon can present direct threats to the assets as well as significant indirect effects for those relying on the services those assets deliver. Such threats are path-dependent and place-specific, as they strongly depend on current and future climate variability, location, asset design life, function and condition. One key question is how climate change is likely to increase both the probability and magnitude of extreme weather events under different scenarios of climate change. To address this issue, this paper investigates selected effects of climate change and their consequences on structural performance, in the context of evolving loading scenarios in three different continental regions: Europe, North America, and Asia. The aim is to investigate some main place-specific changes of the exposure in terms of intensity/frequency of extreme events as well as the associated challenges, considering some recent activities of members of the IABSE TG6.1. Climate change can significantly affect built infrastructure and the society by increasing the occurrence and magnitude of extreme events and increasing potential losses. Therefore, specific relationships relating hazard levels and structural vulnerability to climate change effects should be determined.

**Keywords:** Climate change, extreme weather events, flooding, scour, hurricanes, sea level rise, tsunami

## Introduction

The ageing and deterioration of civil engineering structures is likely to be exacerbated in the next decades by the effects of climate change. On the action side, one may observe an increase in both the probability and magnitude of extreme weather events, such as heavy rainfall, snow, sea level rise and hurricanes. A decrease of the mean value (for example a reduction in the mean value of annual precipitation at a location) may not necessarily translate in a more favourable condition since if the variability (Coefficient of Variation, CoV) increases at the same time, the upper tail of the distribution may still increase, leading to more extreme magnitudes of actions (Retief et al., 2014, Merschman et al. 2021). Concerning frequency, climate change may have an influence on the return period of extreme events (floods, extreme storm events, drought) that may decrease, resulting in the same event having a higher likelihood in any given year (Retief et al., 2014).

In this context, IABSE TG6.1 was established in 2017 to bring together a panel of international experts on the effects of climate change on buildings and civil engineering structures, with the aim to promote technical discussions and gather existing global knowledge. The strategy is to focus on a number of relevant case studies and to highlight common points between them when dealing with climate change (e.g. scale of the analysis, types of structures, methodology and objectives) (Orcesi et al., 2021). The goal of IABSE TG6.1 is to characterize not only the severity of impacts but also to give recommendations of adaptation strategies for management of structures in view of climate changes (Orcesi & O'Connor, 2021).

Some of the aspects covered in this task group are presented in this paper to illustrate how different scenarios of climate change may produce changes of the exposure in terms of intensity/frequency of extreme events, with a focus on three different areas in the world: Europe, North America, and Asia.

The topic concerning Europe includes the potential changes in the intensity of load patterns. One part of this study investigates the effect of climate change on ground snow loads, river flooding, scouring effects, higher expected temperatures and consequences of sea level rise. Flooding is one main reason that may affect the scour risk of bridges located in rivers. Flood induced actions on infrastructures are influenced by climate change and present design practices need to be adapted to provide for reliable structures over the desired lifetime. The effect of the statistical characteristics of annual maximum flood event distributions (i.e. mean and standard deviations) and other types of asset and model uncertainties (such as foundation depth or scour model uncertainties) on scour risk are explored. The focus is on riverine bridges and the adverse impact due to scour and hydrodynamic loads. This study explores the relationship between flooding intensity measures (flow velocity, depth) and damage to bridges on the basis of past available data. The importance of these topics have been recognized by several reports providing background information for ongoing revisions of the Eurocodes (Athanasopoulou et al., 2020, Copernicus Climate Change Service, 2018, Forzieri et al., 2015).

Focusing on North America, the presented study provides the assessment of hurricane surface wind, rain and surge hazards under a changing climate, which is achieved by performing advanced simulation components. Hurricane events are generated for both observed (historical) and projected climate conditions, and a systematical comparison between these two scenarios is investigated. In general, the simulation and comparison of results highlight the important effects of a global warming scenario on intensifying hurricane surface wind, rain and surge hazards, and hence impacting the performance of critical civil infrastructure in hurricane-prone areas (e.g., coastal structures).

In Asia, the rising sea levels could enhance negative impacts on coastal communities. A procedure for estimating the failure probabilities of bridges and embankment under tsunami hazard is thus established taking into consideration the sea-level rise. Monte Carlo-based tsunami propagation analysis is performed to obtain the tsunami hazard. Based on the comparison of risk and resilience with and without considering the climate change effect, whether the sea-level rise has to be considered in the risk assessment of coastal road networks under tsunami hazard is discussed in an illustrative example.

At present the effects of climate change on the actions on structures are the subject of intensive research activities. Large uncertainties in the projections due to random physical processes evolving in time, lack of knowledge, and limited measurements make all results vague and any generalizations doubtful. This study focuses on selected regions and actions and aims to provide an overview of the existing knowledge. However, large uncertainties related to all projections should always be kept in mind.

## 1. Changes of load patterns in Europe

### 1.1. Effects on ground snow loads

In respect of snow patterns, European regions belong to various climates such as maritime, continental, or cold, often with significant dependence on the altitude of the site. The climate in lowlands of Western-Central Europe and in the Mediterranean is characterised by an intermittent snow cover, i.e. single or a few snowfalls followed by often complete melting. In contrast, the climate in mountains, such as in the Alps and in the cold Northern regions, is characterised by a sustained and accumulating snow cover.

The background documents providing the probabilistic basis of climatic actions modelling within the development of the Eurocodes (CEN/ TC250/ SC1.T6, 2021; Formichi et al., 2016) indicate that annual maxima of the ground snow loads can be well described by a Gumbel distribution (EVI) for the sites located at low altitudes (<1000 m a.s.l.) with intermittent and irregular snow covers. In contrast, a Weibull distribution (EVIII) seems to be appropriate for the sites at high altitudes (>1500 m a.s.l.) where snow accumulation is significant. A detailed analysis (Rózsás et al., 2016) focusing on the Carpathian region confirmed the Weibull distribution for

mountains while arguing that a Fréchet (EVII) distribution provides the best fit for lowlands. The US experience advocates a lognormal distribution (ASCE 7-16, 2017) that has also been considered in some countries in Europe. Estimated fractiles with return periods of 50 years and longer can be very sensitive to the chosen type of probabilistic distribution. This sensitivity further increases with the assessment methods to be used, namely the statistical framework (Generalized Extreme Value, Generalized Pareto Distribution, Point Processes, etc.), the parameter estimation methods (such as Method of Moment or Maximum of Likelihood), the cleaning of the data and choices within the statistical methods (for instance block length for GEV or threshold value for GPD).

Kvande et al. (2013) investigated the predicted effects of climate change on the ground snow loads in Norway. They concluded that the expected global temperature increase would, in the majority of the country, lead to decreasing ground snow loads in 2070-2100. Yet, in some inner areas, an increase of ground snow loads is predicted with the expected impact on structural reliability.

Regarding milder snow climate regions, the statistical analysis of recorded ground snow loads in Central Europe has shown:

1. Statistically significant decreasing trends in annual maxima for the Swiss Alps (Marty & Blanchet, 2012) and the Carpathian region (Rózsás et al., 2016), confirming the substantial decrease in snow depth and snow coverage observed for Romania (Birsan & Dumitrescu, 2014). In the Carpathian region this decreasing trend has negligible or favourable effect on structural reliability.
2. The effect of statistical uncertainties was substantial (Rózsás et al., 2016), mainly because the observation periods were short in comparison with the return periods considered in structural reliability analyses. Consideration of time trends and extrapolation in time increases this uncertainty.
3. An increase in the variability of the meteorological effects might result in more frequent heavy snowfalls especially in higher mountainous regions as for example demonstrated by some roof failures in Bavaria (Strasser, 2008).

Croce et al. (2021) recently analysed records of extreme ground snow loads in Europe from 1951 with projections until 2100. They showed that ground snow loads with a 50-year return period could mostly decrease as a result of the projected decrease of mean annual maxima, partly outweighed by increased variability. For some regions, increasing extreme ground snow loads were predicted, including Mediterranean, Iberian Peninsula, UK, Norway and Sweden. The study concluded that these climate change effects need to be combined with the inherent uncertainty of climate models and scenarios to assist decisions about adaptation measures.

It appears that unambiguous recommendations regarding the probabilistic modelling of ground snow load extremes affected by climate change cannot be made considering the state-of-the-art knowledge. This is why CEN/TC 250/SC1.T5 (2018) requires that the recommendations regarding climatic loads should be continuously developed and periodically revised, at minimum every 15 years. Expected trends of significant time-dependent parameters should also be given.

## 1.2. Effects on river flooding

Flooding is a major natural hazard in most of Europe (Kundzewicz, 2013). Climate change in Europe is foreseen to increase risk of river flooding, particularly in North-Western and Northern Europe (Copernicus Climate Change Service, 2018). The JRC report (Forzieri et al., 2015) concluded that Western Europe exhibited increasing flood occurrence as current 100-year events might manifest every about 30 years in 2080s. In other European regions, projections of river floods show higher spatial and temporal variability, with lower and less significant patterns of changes:

- In about 30% of Southern and Eastern Europe, a significant decrease in extreme flood discharges is expected (with an increase in 10% of this region),
- For 24% of Northern Europe, a significant increase in extreme flood discharges is projected while a significant decrease is estimated for 23% of this region,
- In Central Europe, areas with a significant increase (26%) dominate over those with projected decrease (15%).

Numerous studies investigated trends and severity in floods due to heavy rainfalls or snowmelt (Kundzewicz, 2013). It was estimated that in a +2°C world 25% of the people living in regions affected by fluvial floods would face increased flood risk compared with the situation of no global mean temperature increase (no climate change). This percentage rises to 50% in a +4°C world. Furthermore, the flood-affected population would

increase to 211 and 544 million in the +2°C and +4°C world, respectively (Kundzewicz, 2010). Observational data show increasing frequencies rather than the magnitudes of floods (Hirsch & Archfield, 2015).

A range of probabilistic distributions have been considered in modelling of extreme flood discharges. Examples of commonly applied models include a Pearson III distribution with lognormal transformation of data, Gumbel (EVI) distribution, or a two-parameter lognormal distribution (Holicky & Sykora, 2009 and 2010, Yue et al., 1999). When a peak-over-threshold method is applied, a generalised Pareto distribution can be used (Reynard et al., 2009). Note that an appropriate model should be selected on the basis of the statistical tests taking into account experience with distributions of flows at other localities (Holicky and Sykora, 2010). In some cases, climate change has been shown to induce more scattered events, meaning higher extreme events, but also more frequent extreme events (Jentsch et al, 2007). Infrastructure managers concerned by the recent flood episodes in France, Belgium and Germany have noticed that 100-year return events happen every few years, which is in agreement with the observations in the JRC report (Forzieri et al., 2015). Similarly, rain events have been noticed to be longer in time, which is an issue for floods and scour.

These insights imply that trends in occurrence rates and magnitudes of events need to be analysed before an appropriate distribution is selected to describe a flood level or discharge, given the occurrence of an extreme event.

Further, flood-induced risks will increase due to increasing population in the future, which can be seen as a key reason for increased flood losses in Europe and other densely populated regions with large areas of pavements, vanishing gardens and parks, poor drainage system maintenance etc. Based on the extensive review of recent studies, Hov et al. (2013) concluded that the flood risk have increased over many areas in Europe due to a range of climatic and non-climatic effects whose relative importance is site-specific.

The 2013 flood of the Danube River is considered thereafter as an example of measures taken after a particular disastrous event. This flooding event brought the highest ever recorded discharge in Bratislava (Slovakia) and the highest ever recorded water level in Budapest (Hungary), along with other large floods in the neighbouring region. Researchers immediately called for analysing the effect of climate change on floods and on reconsideration of design parameters of flood defences. Hattermann et al. (2016) found out that in Germany - similarly as in other locations - considerable increase in flood related losses could be expected due to climate change.

Some researchers claim that the assumption of stationarity cannot be upheld and they call for non-stationary models in water management (Milly et al., 2015). Others point out that observations are limited and statistical uncertainty still governs extreme predictions, thus there might be no practical gain in moving to non-stationary models (Serinaldi & Kilsby, 2015). This uncertainty could be reduced by incorporating predictions of global circulation models. By incorporating climate model predictions, uncertainty of large return period events (> 1000 years) can be considerably reduced (Van den Brink et al., 2005), though there are multiple caveats, for example a single relatively short measured realization of the Earth's climate is used for the validation of these models. It should be noted that flooding is affected by a wide range of factors other than changes in extreme precipitation, for example human land use, i.e. urbanization can greatly increase the flood risk (NASEM, 2016). Therefore, climate change is likely to affect weather patterns and the hydrological cycle due to global warming, increasing the frequency and magnitude of rainfall and, as a consequence, of flooding events. In particular, climate change is expected to influence extreme (low-probability, high-impact) events (Pendergrass, 2018).

Results in literature show an intensification of extreme precipitation and flood events over all climate regions, with non-uniform rates according to the region (due to different interacting drivers of extreme precipitation changes) (Tabari 2019, 2020). Analysis of the effects of climate change and identifying statistically significant time trends are further complicated by many geographical and meteorological factors that affect extreme discharges during floods and may evolve themselves over time. Possible climate change effects may be overestimated by nonstatistical influences that may have developed during the period covered by the measurements and may affect future extreme discharges. These influences include (Holicky and Sykora, 2010):

- River management including maintenance and/or restoration of floodplains, modifications of depth, width, and roughness of a river channel, and removal of vegetation;
- Local paved areas affecting local flood conditions;
- Effects of deforestation, changes in land use, and other human made interventions in the environment, etc.

The hydrological data always require critical hydrological review to faithfully represent best knowledge about the flooding conditions (Lind et al., 2009).

### 1.3. Effects on the flow velocity in rivers and the risk of scouring

There is established consensus that the increased risk of scour to bridge piers and abutments is one of the critical effects of climate change (DEFRA 2016, TRB 2008). For example, according to (DEFRA, 2016), bridge scour may increase by between 5% and 50% by the 2080s in the UK, depending on the bridge conditions and location. However, a quantitative assessment of the potential consequences of climate change on bridge scour is missing (Imam, 2019) and the need to incorporate the effects of climate change (e.g. more intense, frequent rainfall) for assessing associated risk of bridge failures due to scour action still remains (Khelifa et al. 2013; Sasidharan et al. 2021).

Scour depth is linked to the speed of the water flow. Indeed, regarding the parameter time, without sediment transport, scouring grows slowly and tends towards the asymptotic value, and the phenomenon is slow. But with sediment flow, the scour hole is dug very quickly and oscillates around a mean value. This threshold is an extreme depth, applicable for all cases of possible hydraulic flow (Levillain, 1992). Currently, alongside these long-term phenomena, rivers and their environment are exposed to short-term ones, e.g. aggressive water flows or flash floods. The force of the water flow is similar to an impact force on everything which happens to be on its path, as for example bridge piers or bridge decks. These phenomena and their consequences cannot be predicted currently, and generally the engineering work consists in conducting some post-phenomenon remedial works and emergencies to describe and explain what happened.

Potential future increases in flooding due to climate change need to be taken into consideration when designing new structures or assessing existing ones. The challenge in accounting for climate change in scour assessments is that the sensitivity of peak river flows to climate change is likely to be different for various different types and locations of rivers. A framework for quantifying such sensitivities has been recently proposed by Kay et al. (2021). In scour design and assessment codes, the potential effects of climate change are usually captured by simply increasing the magnitude of the design flood, which is the river discharge for a given return period, i.e. 200 or 500 year, by a percentage, i.e. 20-25% (Network Rail 2011; Highways Agency, 2012). The new UK guidance on highways bridges have recently updated climate change allowances, which have become location-specific (Takano and Pooley, 2021). However, in other national codes (e.g. the Italian Guidelines on Risk Classification and Management of Bridges; CLSP, 2020), climate change is not detailed in the risk assessment of scour and hydraulic risk (Pregolato, 2021). On the other hand, there are studies that have been carried out recently which attempt to model, in more detail, the effect of climate change on the flood-frequency distributions and their effect on scour risk (Imam 2019; Devendiran et al. 2021; Liu et al. 2020; Yang & Frangopol 2019). For example, Kallias & Imam (2016) modelled the effect of climate change as a variation in the parameters that underpin the annual flow distribution (mean value, standard deviation).

Structural Health Monitoring (SHM) provides a valuable tool for monitoring bridges affected by climate change-related flood damage (Giordano et al., 2021), to understand bridge management actions (e.g. bridge closure, reduce traffic) to be undertaken after a severe flood. The costs of bridge management actions are expected to increase as the intensity and frequency of flood events increase, since severe damage states are more likely to occur. On the other side, as climate change is leading to more extreme flood events, sensor monitoring could become more cost-effective in the future.

### 1.4. Effects of higher expected temperatures

With higher expected temperatures in the future due to climate change, this may have an effect on the response of civil engineering structures. One potential effect may be the fatigue stress cycling of bridge structures. Farreras-Alcover et al. (2016) carried out a study in Denmark to understand the influence of temperature on the response of orthotropic bridge decks; the authors utilised long-term monitoring data collected on the Great Belt Bridge in terms of temperature and strains at various locations of the bridge deck. The study confirmed the temperature dependence of the stress ranges experienced at welded joints of the bridge deck, depending on their location with respect to the bridge's pavement. It was shown that a mean air temperature increase of 2.9°C by the year 2100 can reduce the remaining fatigue life of critical bridge details by approximately 25 years. A recent European study also showed that the design thermal actions on bridges are expected to be affected by climate change and the influence of higher extreme temperatures (Athanasopoulou et al., 2020).

### 1.5. Effects of sea level rise for coastal infrastructures

All models responsible for the projection of future sea-level rise are driven by regional characteristics, which makes local prediction important to identify potential impacts and to improve planning for safety measures needed. For example in the Mediterranean region there are numerous coastal areas that are potentially

vulnerable to flooding and erosion. These issues coupled with future sea-level rise should be explored thoroughly. Galassi & Spada (2014) suggested a model that shows a spatially-averaged projected sea-level rise by 2040–2050 will be 9.8 and 25.6 cm in the Mediterranean Sea in their minimum and maximum scenarios, respectively, values that are slightly smaller than the minimum and maximum likely ranges of variation assessed by the IPCC AR5 under the RCP6.0 scenario. The Bank of Greece (2011) predicted sea level rise in the Greek coastal areas by 2100 in a range from 0.2 m to 0.59 m while conservative projections reach 1.5 m to 2 m. Although there are large variations in these projections, the effect of sea level rise on the frequency and intensity of natural hazard events is unquestionable. Flooding caused by the increased tidal or storm surge heights is one important hazard to structures that is affected by sea level rise. The coupling of tsunami hazard, which is a cascading effect after strong earthquake events, with sea level rise is also critical. Based on recent events and historic records the potential impact of tsunamis can be disastrous. However, the combination of tsunami actions with sea level rise has not been yet sufficiently explored (see Section 3). Even the occurrence of mini tsunami events, as the one triggered by the Samos earthquake of magnitude 7.0 Mw on 30 October 2020 that could be set to worsen with sea level rise, shows the significance of studying this coupling effect. There is an urgent need to determine these potential hazards based on regional characteristics and perform targeted vulnerability assessments on critical coastal infrastructure (e.g. transportation and electric power networks) located at the coastlines to identify those that are at high risk.

Besides, let us illustrate the effect on sheet piles in coastal infrastructures. In France (Boéro et al., 2009), 25% of harbors' infrastructures are built with sheet-piles and this percentage reaches 50% for key economic or military infrastructures. Boéro et al. (2014) illustrated with a case study that structural reliability is mainly sensitive to the loading from the soil, except if large corrosion occurs. Sea level rise acts on this loading: first, on the position of the permanent loading and on the intensity of this loading in case of embankment (Archimede effect) and second on the position of cyclic loading due to waves and tide, thus on the level of stress in the fatigue assessment. Additionally, there is a coupling with corrosion as the sea level rise changes the vertical profile of corrosion (Schoefs et al. (2020)). For quantifying the relative impact of this effect, Table 1 presents the effects of corrosion and sea-level rise on the mean stress for the RCP8.5 scenario applied to the case study of (Boéro et al., 2012). It is interesting to observe in this case that the sea level rise decreases the stress and compensates the effect of the corrosion.

**Table 1.** Effect of sea level rise on a sheet-pile wharf.

Configuration	Zone	Stress (MPa)			
		After 50 years		After 100 years	
		Without sea-level rise	With sea-level rise	Without sea-level rise	With sea-level rise
Wharf exposed to tide change	At the tie rods	83.95	81.267	84.16	74.436
	In the maximum bending area (immersion area)	-160.47	-149.01	-163.71	-138.84

## 2. Tropical cyclone surface wind, rain and surge hazards in North America

There remains significant debate about how rising greenhouse-gas concentrations affect tropical cyclones (TCs), however, the available global climate models and downscaling techniques generally support the premise that the frequency of destructive high-intensity storms under changing climate will increase (with large regional variations) (Mendelsohn et al. 2012). Current climate models project significant changes in several environmental factors, including sea surface temperature (SST), environmental vertical wind shear, and moisture content and temperature at the tropopause level (Mudd et al., 2016). Among them, the SST is usually considered as the dominant one, linking climate and tropical cyclone phenomena. Increases in sea surface temperatures (SSTs) are acknowledged to be a result of global climate change due to increased CO<sub>2</sub> emissions (IPCC, 2007). WEF (2013) suggests that global average SST may increase 4°C by 2060 based on the current trends. Knuston et al. (2010) found that the peak wind speeds of tropical cyclones could increase by 5% for every 1°C

increase in SST. Elsner (2006) stated that climate change causes higher SST; warmer SST results in more energy which is converted to stronger TC winds.

There have been efforts in the engineering community to conveniently and efficiently consider the influence of the warming climate on TC activities by integrating the projected environmental conditions into a TC assessment framework (e.g., Rosowsky et al. 2016; Rosowsky, 2018), generally involving a TC track model (consisting of genesis, trajectory, and intensity modeling components) to generate the synthesized storms. While there are several important environmental factors contributing to TC dynamics and thermodynamics (e.g., SST, wind shear, convective instability, temperature at the top of atmospheric boundary layer, and outflow temperature), SST is usually the only consideration in these downscaling exercises. To address this issue, a nonlinear intensity model integrating not only the contribution of the SST but also other thermodynamic and dynamic variables (such as vertical wind shear and convective instability) has been developed (Snaiki and Wu, 2020a).

Due to its simulation efficiency and accuracy, the enhanced TC track model developed by Snaiki and Wu (2020a) can be effectively used in the context of a changing climate. To accurately assess the TC hazard under changing climate, the probability of various emission scenarios, conditional probability distribution functions (PDF) of regional environmental factors given a climate change scenario (considering inherent uncertainties and climate model differences) and conditional PDF of each TC hazards (e.g., wind, rain or surge) given a set of environmental factors should be carefully examined. The first two uncertainties (involved in the emission scenario simulations and climate models) have been well presented in the Section of “sea-level rise” discussion. The emphasis in this section will be focused on coupling the enhanced TC track models and TC hazard models. The obtained assessment framework of TC surface wind, rain and surge hazards under a specific set of environmental factors of a future global warming scenario is used thereafter to highlight the significant implications of a changing climate to coastal structures and infrastructure.

## 2.1. Climate-dependent stochastic simulation framework of tropical cyclone hazards

To adequately resolve TCs for obtaining sustained wind speeds (or TC intensity) with high accuracy, a very high resolution of current global climate models (e.g., on the order of 1 km or less) is needed (Rotunno et al. 2009; Emanuel et al. 2010). To reduce the computational costs of explicitly simulated storms, downscaling exercises are typically used. Although numerous environmental factors from the outputs of climate models have been identified as the factors that have an influence on TC activities, current engineering applications mainly consider the effects resulting from SST.

TC-related hazards, namely, strong wind speeds coupled with torrential rainfall and powerful storm surge, are expected to increase significantly in the coming years because of the effects of global warming (Rappaport 2000; Czajkowski et al. 2011; Rappaport 2014). TC surface wind, rain and surge hazards under a changing climate can be accessed, for example, by performing the climate-dependent stochastic simulation framework of TC hazards developed at the University at Buffalo (UB). The UB climate-dependent stochastic simulation framework of TC hazards essentially consists of three components, namely an enhanced TC track model to generate the synthesized storms (including a physics-based intensity model integrating SST, wind shear, and convective instability contributions) (Snaiki & Wu, 2020a), a novel thermal wind balance-based model to simulate the gradient wind profiles (explicitly considering environmental conditions of SST, temperature at the top of atmospheric boundary layer, and outflow temperature) (Snaiki & Wu, 2020b), and efficient hazard models for wind, rain and surge simulations. Specifically, a height-resolving boundary-layer model was developed to obtain the surface wind and rain fields (reducing inherent uncertainties associated with conventionally used gradient-to-surface wind speed conversion factors) (Snaiki & Wu, 2017a, 2017b, 2018), and an efficient, artificial neural network-based model (i.e., multi-layer feedforward backpropagation network) was developed to predict storm surge using the standard TC parameters as inputs, namely, central pressure, translational speed, radius of maximum winds, and storm track (Snaiki et al. 2020). The machine learning-based model is constructed using the large database of synthetic tropical storms obtained from the U.S. Army Corp of Engineers through NACCS. The NACCS database is accessible through the Coastal Hazards System web tool (<https://chs.erd.dren.mil/default.aspx>). The schematic of the UB climate-dependent stochastic simulation framework for TC wind and rain hazards is presented in Figure 1. Although each component of the UB climate-dependent stochastic simulation framework for TC hazards will undoubtedly improve over time, currently it provides a guide on how to integrate atmospheric science and wind (and coastal) engineering for effective evaluating effects of climate change on TC surface hazards.



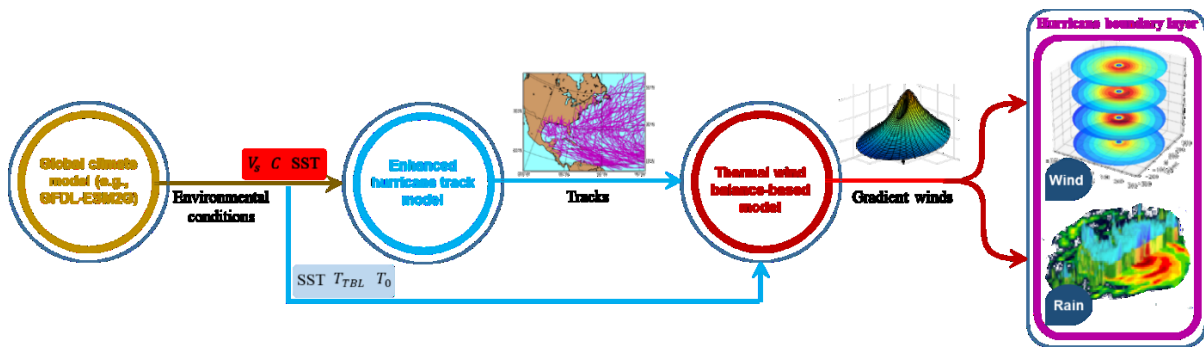


Fig. 1. UB climate-dependent stochastic simulation framework for TC wind and rain hazards (Snaiki and Wu 2020b) (Note:  $V_s$  is wind shear,  $C$  is convective instability,  $T_{TBL}$  is temperature at the top of the atmospheric boundary layer, and  $T_0$  is outflow temperature)

## 2.2. Impact of climate change on storm surge using the SLOSH model

An alternative to the artificial neural network-based model discussed above for modeling storm surge hazard is the use of physics-based models such as the Sea, Lake, and Overland Surges from Hurricanes (SLOSH) model (Jelesnianski et al., 1992). Here, a case study is presented to generate the projection of future storm surge hazards for selected locations across the Atlantic and Gulf Coast regions of the U.S., considering the impact of the rise in sea surface temperature (SST). To generate the surge hazard, 20,000 TC years are simulated using a validated TC simulation model based on the Empirical Track Model (ETM) first proposed by Vickery et al. (2000). Projected future SST is obtained from the Coupled Model Intercomparison Project Phase 5 (CMIP5) for use in the simulation. The SLOSH model is employed for the storm surge analysis.

Figure 2 shows the projected changes in surge height at the end of the 21st century in eight locations across the Gulf and Atlantic Coasts. Three RCPs (RCP 2.6, 6.0, and 8.5) are considered for the analysis. As expected, there is a rise in surge level observed across the studied locations due to increased TC intensity. An analysis of the impact of the changes in SST on surge return periods also indicated that significant changes would be expected. For example, the 100-year surge height for the present climate is expected to become a 25 to 50-year occurrence under RCP 8.5 for the studied locations. It is also expected that sea level rise will compound the impact of climate change on future surge hazards. It should be noted, however, that surge heights are not only a function of TC intensity. Other factors such as topography, bathymetry, and geographic layout play a huge role and directly impact the resulting surge height. Furthermore, variations in other TC parameters such as heading angle, translational speed, and landfall location also play a crucial role in surge heights.

The scenario-based approach used here does not consider the likelihood of the various IPCC emission scenarios. The likelihood of the scenarios has been a subject of much discussion. Rogelj et al. (2016) assessed the effect of current Intended Nationally Determined Contributions (INDCs) of countries outlining their post-2020 climate action and concluded that a median surface temperature warming of 2.6-3.1°C is expected by 2100. Such an increase indicates that a scenario between RCP 6.0 and 8.5 is likely. Some researchers have argued that the RCP 8.5 scenario is more likely than originally thought because of factors such as the release of greenhouse gases from thawing permafrost, which are larger than currently estimated (Lenton et al. 2019; Peters et al. 2013). Other researchers have argued that the RCP 8.5 scenario is becoming increasingly implausible partly because it will require a fivefold increase in coal use, which is highly unlikely, and the cost of clean energy sources will continue its falling trend (Hausfather and Peters, 2020). There is an increasing call for a risk-based or probabilistic approach to modeling future climate scenarios. However, there are several challenges to moving to such an approach. The main challenge is that probabilistic climate scenarios might underestimate the uncertainty because of an inadequate number of global climate model runs due to computational limitations and the use of improper probability distributions in models (Hall 2007). Also, the likelihood of the various scenarios will keep changing constantly and will need to be updated as new data is collected and climate models are being updated (New et al. 2007).

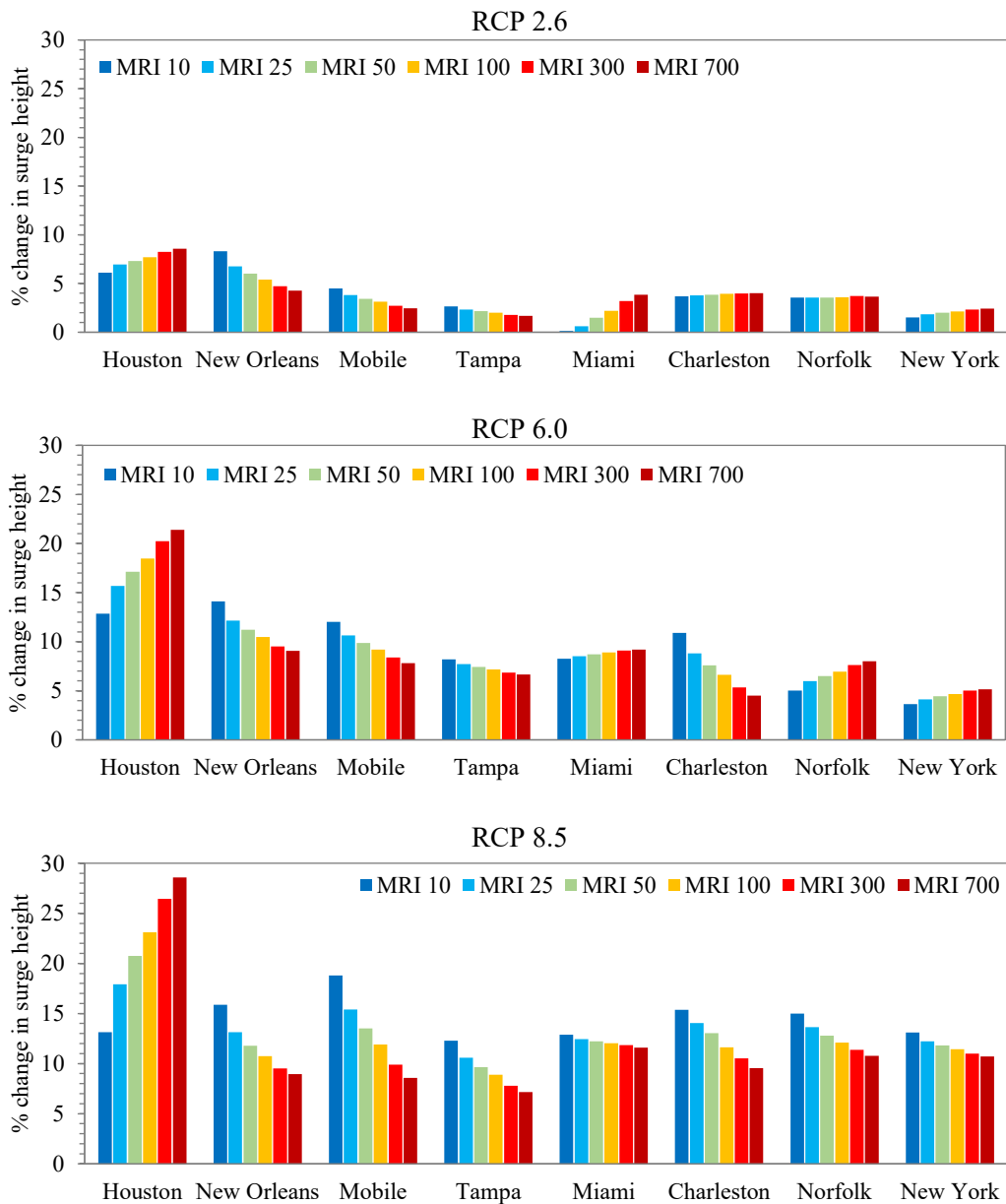


Fig. 2. changes in storm surge hazard from 2020 to 2100 for different Mean Recurrence Intervals (MRI) under RCP 8.5

### 2.3. Implications for coastal structures and infrastructures

Direct and indirect economic losses associated with TC wind, rain and surge hazards are expected to increase with growing coastal populations and associated structures and infrastructures in coastal regions (Pielke et al., 2008). Such losses are expected to increase because of a changing climate. Hence, TC risk-assessment models must be able to account for the non-stationary aspects of TCs, to account for the potential effects of climate change on TC damage costs. However, many existing models that estimate TC damage costs as a function of wind speed assume that the wind speed is stationary. Li & Stewart (2011) developed a framework for TC risk assessment in Queensland, Australia. The framework assessed the impacts the changing global climate may have on damage costs, and found that increasing TC wind speeds could increase damage costs. Stewart et al. (2014) assessed damage risks and the cost-effectiveness of designing new housing to be less vulnerable to TCs. Bjarnadottir et al. (2011, 2014) proposed a conceptual framework for estimating TC damage risks to residential construction in Florida considering the change in wind speed as a result of climate change, as well as TC-induced surge considering climate variability in Miami-Dade County, Florida, New Hanover County, North Carolina and Galveston County, Texas in the USA.

Among TC hazards, wind and rain hazards are of great significance since a substantial part of economic and life losses resulting from TC events are directly or indirectly related to them (e.g., wind-induced structural damage, wind-driven rain penetration, and inland flooding). A systematical comparison of the simulation results between the historical climate scenario (1991–2010) and future climate scenario (2081–2100) subjected to the RCP 8.5 was carried out in Snaiki and Wu (2020a) based on UB climate-dependent stochastic simulation framework of TC hazards for the northeast United States coastline. A total of 10,000 years of TC events were generated for both historical and projected climate conditions. TC surface wind speed and rain rate were characterized in terms of the MRI (mean recurrence interval). In general, higher TC surface wind speeds and rain rates were obtained for all levels of MRIs, with changing climate, based on the selected global climate model. For example, the wind speed corresponding to a 50-year MRI was projected under the RCP 8.5 climate scenario to increase by approximately 14% at a location of Monmouth County, New Jersey and an increase of 27% in the rain rate corresponding to a 100-year MRI was projected at a location of Nantucket County, Massachusetts. The obtained simulation results indicate that TC surface wind and rain risk mitigation and adaptation for civil structures and infrastructures in coastal regions are necessary in light of a changing climate scenario.

Studies are suggesting that TC hazard patterns may change due to a changing global climate. In addition to changes in TC wind and rain, TC-induced storm surge may also change as a result of climate change. Low-lying coastal areas are particularly susceptible to storm surge and the effects on communities can be catastrophic. Snaiki et al. (2020) coupled the UB climate-dependent stochastic simulation framework of TC with a newly developed machine learning-based surge model to assess storm surge hazard risks to coastal bridges under changing climate conditions. Their simulation results (at a control point of 41.05° Latitude and -71.96° Longitude) suggested that changing climate will have a significant, negative effect on the annualized rate of bridge closures, with the attendant direct and indirect economic losses. For example, the annual probability of exceedance increases from 2.6% under the historical climate to approximately 15% under RCP 8.5 for a 2 m storm surge threshold (a criterion that triggers bridge closure). This situation becomes even worse if sea level rise under changing climate is considered. IPCC (2021) stated that the global mean sea level (GMSL) is projected to rise by 0.28-1.02 m (likely range) under the new Shared Socioeconomic Pathways (SSP) scenarios, and has estimated that GMSL has already increased by 0.2 m between 1901 and 2018. Some regions in the U.S., are identified as extremely sensitive to sea level rise. For example, regarding the New York Metropolitan Area, Horton et al. (2014) state that sea-level is projected to rise along the tidal Hudson by 0.05-0.254 m (2-10 in.) by the 2020s, 0.20-0.76 m (8-30 in.) by the 2050s, 0.33-1.47 m (13-58 in.) by the 2080s and 0.48-1.75 m (15-75 in.) by the 2100s, while the need for the adaptation of coastal infrastructure to sea level rise has been identified in numerous studies (e.g. Jacobs et al. 2011; NPCC, 2013). Sea-level rise affects directly the height of storm surge, since it is directly added upon it (Garnera et al., 2017). The combination of rising static water levels and the increase in the severity and frequency of TC events will lead to increasing submergence and flooding of coastal areas and even accelerated rates of coastal erosion. Increasing storm intensity means that the risk of severe storm surge flooding for coastal communities will rise, as well. Markogiannaki (2019) presented a risk assessment methodology for coastal bridges that accounts both for TC-induced storm surge and sea level rise and shows how climate change affects risk values.

## 2.4. Notes on wind actions in other regions and associated uncertainties

In general, it is recognized that wind pressures are a major climatic action for many structures all around the Globe. Besides hurricanes, (1) synoptic storms and (2) thunder storms cause frequently damage to built infrastructures. However, available knowledge is often inconclusive and significantly region-dependent. For Europe, the report focused on the climate change effects in Europe by CEN/TC 250/SC1.T5 (2018) indicates that regarding (1), the lack of consensus on the significance of observed trends in tropical cyclone statistics poses a challenge to the interpretation of projections for tropical cyclones. Climate model-based simulations are expected to be extensively employed and generate larger sample sizes than those currently available from observations. To model extratropical cyclones, the current global climate models may still have insufficient resolution and thus it may still be the case that resolution is a factor limiting analyses of storm intensity; improvements in resolution are expected to be beneficial for future studies. Regarding (2), an increase in the frequency and magnitude of severe convective storms will influence the statistical properties of wind pressures. However, it seems that the explicit simulation in global or regional model studies is unfeasible in the near future. CEN/TC 250/SC1.T5 (2018) concludes that the indications of a certain increase of wind extremes in Northern

Europe and Northern parts of Central Europe may be expected while Southern Europe may expect fewer extreme wind storms. However, the results significantly depend on the climatic model used.

Apparently, the projections of severe wind events are associated with large uncertainties. For instance, Cannon et al. (2020) observe some consistency amongst the projections by different models for extreme wind pressures over Canada but underline that these are subject to considerable uncertainty due to the general inability of coarse resolution climate models to resolve many of the physical processes that drive extreme winds. They conclude that confidence in these projections is very low. According to CEN/TC 250/SC1.T5 (2018), presently broadly accepted methods to assess the non-stationary behaviour of extremes in time and space are missing and further research is needed to adequately capture uncertainties in projections (including statistical and model uncertainties).

### 3. Sea-level rise multi-hazards in Asia

The Intergovernmental Panel on Climate Change (IPCC) Fifth Assessment Report (AR5) suggested that the potential climate change impact might considerably exacerbate coastal hazards at a regional scale (Church et al., 2013). One noteworthy aspect highlighted in the IPCC AR5 is the global and regional scale sea-level rise, which could aggravate the coastal hazards to a greater extent, such as typhoon-induced storm surges (Yasuda et al., 2010) and flooding due to the precipitation level increase (Tabari, 2020). In addition, a study has revealed that 0.5 meters of sea-level rise are sufficient to double the local tsunami hazard (Li et al., 2018). Therefore, sea-level rise assessment serves as a crucial task to enhance the resilience of coastal communities under future disasters.

Significant research efforts have been made to develop a model to project the future sea-level rise. These models are developed mainly based on two approaches: process-based and semi-empirical approaches. The process-based approach employs a grid-based numerical ocean and atmosphere circulation using climate-related prognostic equations, namely the General Circulation Model (GCM) (Church et al., 2013). Conversely, despite the inadequate representation of the physical process, the semi-empirical approach evaluates the future sea-level rise statistically based on the past data by developing the relationship between the observed temperature and sea-level rises (e.g. Vermeer & Rahmstorf, 2009). However, though many previous studies have been devoted to investigating the future sea-level rise trends, its projection remains highly uncertain.

The uncertainties associated with sea-level rise arises from several aspects, including the amount of emitted greenhouse gas concentration (i.e., climate change scenario) (Moss et al., 2010), ocean and geophysical processes such as ocean circulation and ocean bottom pressure change, and the spatial variability of sea-level rise due to the distributed location of the glacier and ice sheet mass. An extensive summary of sea-level rise uncertainties has been provided by Van de Wal et al. (2019), ranging from global to regional scale. One of the highlighted uncertainties includes the sea-level rise projections among GCMs. Sea-level rise projections among GCMs are considerably varied since each climate model group employed different prognostic formulas and approaches during the modeling process.

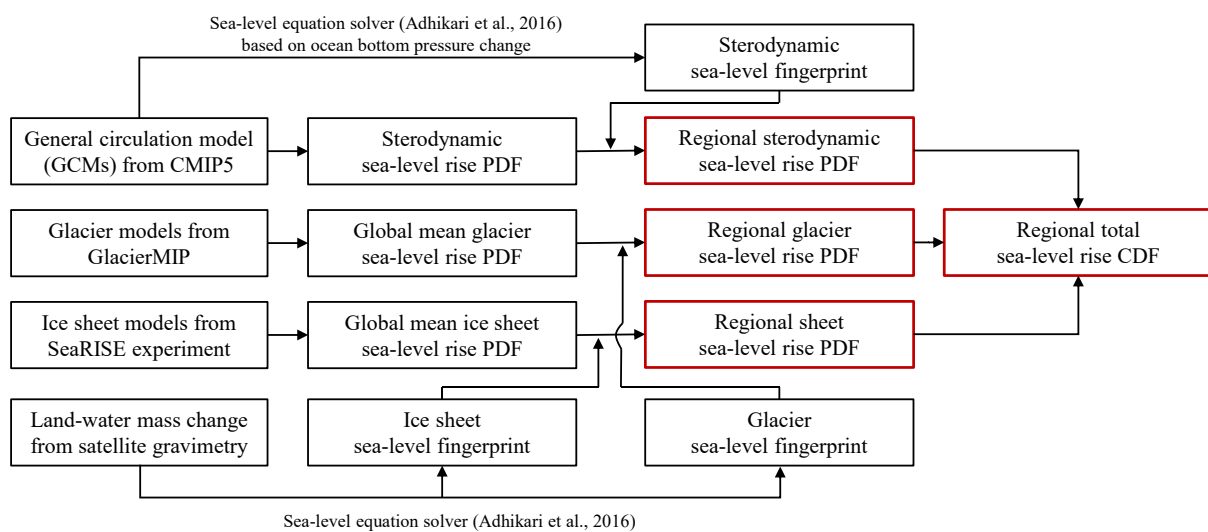
Therefore, the probabilistic approach of sea-level rise assessment is deemed appropriate to consider all of the uncertainties mentioned above (Jackson & Jevrejeva, 2016). An appropriate framework for probabilistic sea-level rise hazard assessments can be developed by utilizing the sea-level rise projections from the process-based approach to perform a statistical analysis of GCMs and other sea-level rise models. Finally, the sea-level rise uncertainties can be integrated with future coastal disasters to promote better climate change adaptation strategies for coastal communities.

#### 3.1. Framework for probabilistic sea-level rise hazard assessments

Several studies have carried out the probabilistic projections of sea-level rise by analyzing each component according to their uncertainty source and including their local variability. For instance, Kopp et al. (2014) suggested that on a modest climate change scenario (i.e., RCP 4.5), the sea-level rise due to oceanographic process from GCM projections could be 0.13 to 0.4 m on a global scale in 2100. In terms of total sea-level rise (i.e., combination of oceanographic process, ice sheets, glaciers, and ice caps), the global sea level is expected to rise in the range of 0.36 to 0.96 m in 2100. Nevertheless, these uncertainties associated with the ice sheet sea-level rise from previous studies were justified according to the expert elicitation and were carried out by disregarding the dependencies between sea-level rise components. The complete framework for probabilistic sea-level rise hazard assessments as complementary from previous research has been presented by Alhamid et al. (2021) and discussed briefly herein.

The complete framework for probabilistic sea-level rise hazard assessments have been presented by Alhamid et al. (2021). First, the regional sea-level rise, defined as the sea-level rise in a particular location in the ocean, is estimated by multiplying each global mean sea-level rise component (i.e., the average value of sea-level rise over the ocean) with its corresponding spatial variability (hereafter referred to as sea-level fingerprint) (Jackson & Jevrejeva, 2016). Three sea-level rise components are considered herein: (1) sterodynamic sea-level rise due to thermal expansion and dynamical ocean currents; (2) glacier sea-level rise due to surface mass balance; and (3) ice sheet sea-level rise due to dynamical ice shelf basal melting. The surface mass balance represents the net loss of snow accumulation and ice mass melting of the glacier and ice sheet, while the dynamical ice shelf basal melting is caused by the detachment of the ice shelf from the bedrock due to ocean warming, which accelerates the ice sheet flow into the ocean. To generate a more representative outcome, further study is needed to consider other non-climatic sea-level rise components including tectonics and glacial isostatic adjustment.

Figure 3 shows the flowchart for estimating the regional total sea-level rise hazard (Alhamid et al., 2021). Each regional sea-level rise component's probability density function (PDF) is estimated differently by utilizing their corresponding uncertainties. Based on statistical analysis, the sterodynamic sea-level rise PDF  $S$  is assessed using the available GCMs from the Coupled Model Intercomparison Project 5 (CMIP5) based on statistical analysis (Taylor et al., 2012). It should be emphasized that before utilizing these models, several preprocessing steps should be carried out, such as model drift correction due to the dynamical imbalance of the GCM initial condition and grid interpolation due to the difference in ocean grid resolution (Jackson & Jevrejeva, 2016). In terms of the global mean glacier sea-level rise PDF  $G$ , the glacier models involved in the Glacier Model Intercomparison Project (GlacierMIP) (Marzeion et al. 2020) can be employed. Finally, the global mean ice sheet sea-level rise PDF  $I$  is evaluated based on the surface mass balance component using the volume above floatation (VAF) change data (Bindshadler et al. 2013) and the ice sheet dynamics assessment following the method proposed by Levermann et al. (2014). The details for each component's assessment can be found in Alhamid et al. (2021).



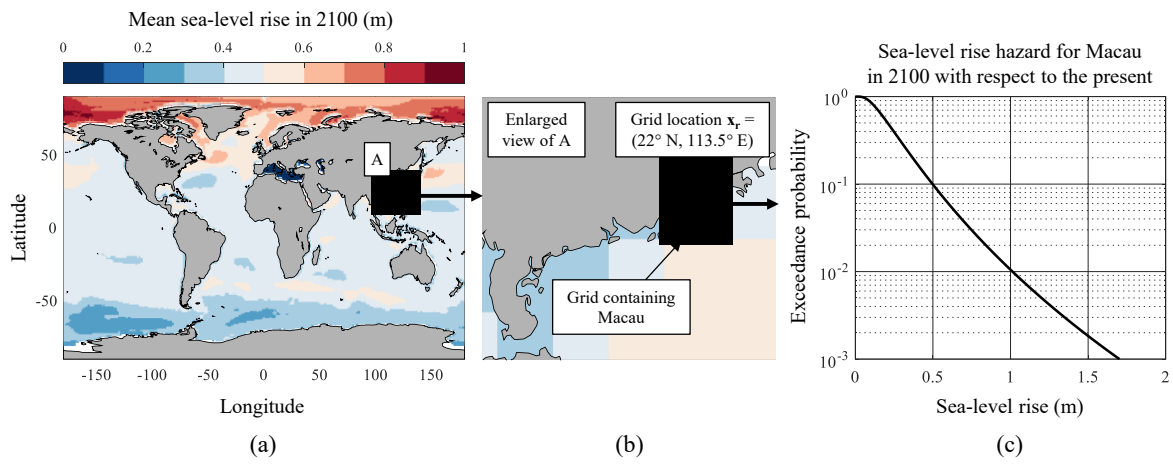
**Fig. 3.** Proposed framework for estimating regional total sea-level rise hazard (Alhamid et al. 2021).

The sea-level rise fingerprints for each sea-level rise component are also estimated differently depending on each source location. The glacier and ice sheet sea-level fingerprint can be estimated using the land-water mass change data from the Gravity and Recovery Climate Experiment (GRACE) (Landerer & Swenson, 2012). The land-water mass changes in the corresponding glacier and ice sheet locations are converted into sea-level rise fingerprints by applying the sea-level equation solver provided by Adhikari et al (2016). On the other hand, the sterodynamic sea-level rise FGSTR is estimated using the ocean bottom pressure (OBP) change data from the Norwegian Earth System Model (i.e., NorESM1-M) as suggested by Richter et al. (2013). The OBP change data is assumed as static loading and converted into a regional sea-level rise associated with self-attraction and loading (SAL) effects by employing the sea-level equation solver from Adhikari et al. (2016) and normalized with its associated global mean value. Finally, each global mean sea-level rise PDF is multiplied by its corresponding sea-level fingerprint using Monte Carlo simulation (MCS) to obtain regional sea-level rise PDF for each component, as shown in Figure 3.

Each sea-level rise component is assumed perfectly correlated with each other since they increase simultaneously with respect to global warming over time. By applying the convolution of probability

distributions concept and incorporating the occurrence probability of climate change scenario defined as representative concentration pathway (RCP), the cumulative distribution function (CDF) of regional sea-level rise hazard can be evaluated according to Alhamid et al. (2021). There has been no established consensus associated with the likelihood of each future climate change scenario, considering that they are dependent on energy and land-use trends. For simplicity, the likelihood between RCP scenarios is assumed to be the same herein (Alhamid et al., 2021). Future studies should be further developed to consider the likelihood of RCP scenarios.

Figure 4 illustrates the regional total sea-level rise hazard map and the sea-level rise hazard evaluated over the Macau Special Administrative Region for the year 2100 with respect to the present. The sea-level rise hazard shown in Figure 4 is calculated based on the procedure shown in Figure 3. For illustrative purposes, the Macau Special Administrative Region is selected as the analyzed area following Li et al (2018) to investigate the potential application of the proposed framework, as discussed later. As shown in Figure 4, it can be inferred that sea-level rise hazard varies considerably depending on the ocean location. Therefore, an appropriate sea-level rise hazard should be evaluated accordingly based on the corresponding analyzed coastal area. The evaluated sea-level rise hazard can be utilized to investigate the potential intensification of coastal hazards due to sea-level rise.

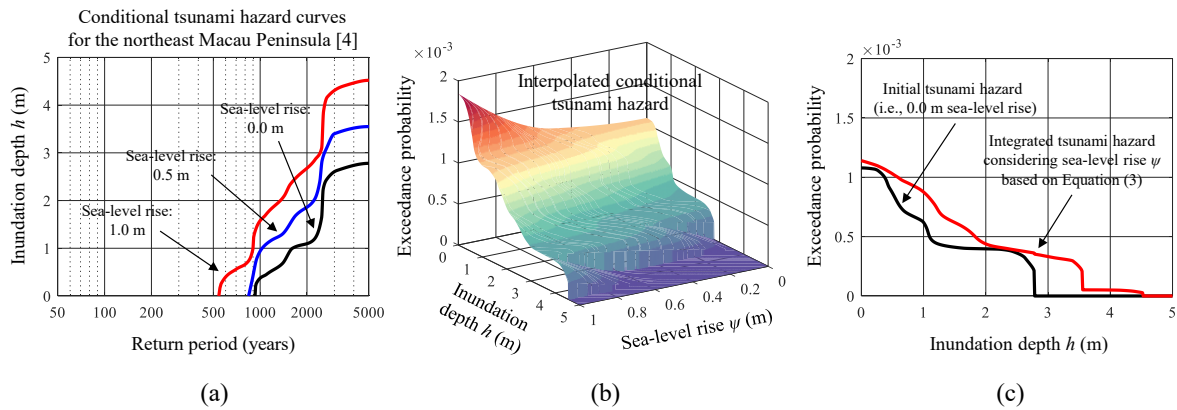


**Fig. 4.** (a) Regional total sea-level rise hazard map, (b) location and analyzed grid containing Macau, and (c) sea-level rise hazard for Macau.

### 3.2. Integration with other coastal hazards

In order to integrate the effects of sea-level rise uncertainties into other coastal hazards, such as tsunami and storm surges, a rigorous numerical-based simulation considering different cases of sea-level rise should be carried out. Li et al. (2018) provided a demonstration in investigating the tsunami hazard increase due to sea-level rise in the Macau Special Administrative Region. Prior to performing the tsunami simulations, they deterministically decreased the bathymetry and topography to simulate sea-level rise effects. Complementary to their study, the conditional tsunami hazard can be integrated with the sea-level rise hazard provided in Figure 4 according to the total probability theorem proposed by Alhamid et al. (2021).

Figure 5a shows the conditional tsunami hazard curve given a specific sea-level rise value estimated by Li et al. (2018) based on numerous tsunami propagation analyses. The tsunami hazard curves for the northeast Macau Peninsula are evaluated under 0.0, 0.5, and 1.0 m of sea-level rise. For demonstration purposes, the return period expression is converted into exceedance probability and interpolated to facilitate the evaluation of the total probability theorem numerically (e.g., MCS, numerical integration), as shown in Figure 5b. By convolving the conditional tsunami hazard curve with the sea-level rise hazard provided in Figure 4c, a tsunami hazard curve considering the effects of sea-level rise can be obtained, as shown in Figure 5c. The tsunami hazard curve increases when considering the effects of sea-level rise. Depending on the exposure of the analyzed infrastructures, the potential impact of small tsunamis should not be underestimated since it could generate a considerable amount of economic loss, casualties, and disaster waste that could impede the recovery process (Akiyama et al., 2020; Ishibashi et al., 2021). Moreover, although the results presented in this study are demonstrated with an emphasis on the year 2100, the time frame for decision-making has to be justified depending on stakeholder interests. Further study is needed to investigate time-dependent sea-level rise effects in other regions under tsunami hazard.



**Fig. 5.** (a) Conditional tsunami hazard curves for the northeast Macau Peninsula provided by Li et al (2018), (b) interpolated conditional tsunami hazard curve, and (c) integrated tsunami hazard curve considering sea-level rise effects.

The inclusive coastal hazards integrated with sea-level rise effects could provide more appropriate climate change adaptation strategies. In terms of tsunami risks, a mitigation plan should be implemented through an adequate design of coastal defense structures to minimize the associated consequences. The current philosophy of coastal structure safety level should be reconsidered based on the corresponding hydraulic standards of the coastal protection, the inherent capacity to withstand a certain level of tsunami impact (including several plausible failure modes such as overtopping of seawall and dikes instability due to progressive erosion), and the increasing return period of the tsunami due to sea-level rise. Since the previous study has pointed out that sea-level rise could also extend the tsunami impact spatially (Li et al., 2018), a higher safety level of coastal defense should be addressed for more populated and capital intensive regions.

In addition to the coastal defense as a systematic mitigation effort, the tsunami damage on bridge structures should be controlled through more adequate design criteria to allow a rapid restoration process. Under the intensified tsunami impacts due to sea-level rise effects, the bridge's substructure should be designed in a satisfactory performance such that it remains functional and intact for emergency transport (e.g., controlling the excessive deformation and well design against washout). Hence, the above concerns imply that the risk of tsunami under sea-level rise effects necessitates a more comprehensive reassessment of standards for the design or assessment of structures to promote resilient coastal communities.

## Conclusions

By considering specific examples where climate change may produce changes of load patterns, this paper provides some key topics when dealing with the effects of climate change in three different continental regions: Europe, North America, and Asia. Common engineering experience suggests that it is more effective to immediately adapt design strategies for foreseen climate change effects rather than excessively investing into upgrading of insufficiently durable and unreliable structures in the future. Provisions for uncertainties in present design procedures provide a buffer against early manifestations of climate change effects. Using advanced climate modelling to resolve these uncertainties is therefore the first logical step towards adjustment of design procedures to account for the imminent and expected impacts of climate change. The presented overview of various effects of climate change on built infrastructures leads to the following conclusions:

- (i) climate change has an impact on future extreme environmental actions on structures and should be considered. However more data, models and other information are necessary in order to better extrapolate future predictions of environmental actions, e.g. wind, hurricane, heat, snow and flood actions;
- (ii) essential contribution of meteorologists and statisticians to civil engineering includes improved projections for trends and extremes in local weather events, and specification of uncertainties in events associated with 100- to 1000-year return periods;
- (iii) periodic review of statistical data and probability models related to environmental actions is required;

- (iv) revisions of design and assessment standards are recommended to reduce the impacts of climate change on the performance of structures. The scope of such revisions should include limit state failure verifications, global failure aspects and foreseen consequences of extreme weather events on built infrastructure. Steps are to be made as soon as possible due to the inertial effect of decisions accepted at present on the future built environment. Yet these revisions should be made with caution as short-term recent data might indicate short-term (say decadal) climate variations which might be falsely interpreted as a part of long-term changes. Commonly, long time series (decades) are needed depending on the variability of an observed variable and rate of changes; for instance ASCE (2015) mentions 40-50 years in relation to analysis of rainfall records and the World Meteorological Organization calculates climate normals on the basis of averages over 30 years;
- (v) structural behaviour models affected by climate change will become more important as some structures can be expected in future to be “overloaded” to some extent due to climate change; sufficiently robust structures should be provided to sustain such overloading without excessive damage.

Critical infrastructure represents a key element of all sectors of the economy (e.g. transportation, energy) and their continuous operation is of critical importance. Climate change can significantly affect infrastructure, especially in, but not limited to coastal environmental (e.g. bridges, coastal energy power plants etc.), not only in terms of the increase in the occurrence/severity of extreme events threatening their expected structural performance (e.g. storm surge acting along with sea level rise) and increasing potential losses but also regarding their structural condition (e.g. degradation of built materials). Therefore, one major goal is to determine specific relationships relating hazard levels and structural vulnerability to climate change effects. This understanding will help towards the development of integrated risk assessment approaches and better design and assessment codes, considering both changes in resistance and load processes, and cost-benefit optimization under uncertainty, for informed decision-making on necessary actions to protect critical infrastructure and to enhance resilience of infrastructures to extreme weather events in the short, medium and long-term.

## Acknowledgements

This study is an outcome of IABSE TG6.1.

## References

- Adhikari S, Ivins ER, Larour E. ISSM-SESASAW v1.0: Mesh-based computation of gravitationally consistent sea-level and geodetic signatures caused by cryosphere and climate driven mass change. *Geosci Model Dev* 2016;9:1087–109. <https://doi.org/10.5194/gmd-9-1087-2016>.
- Akiyama, M., Frangopol, D. M., & Ishibashi, H. Toward life-cycle reliability-, risk- and resilience-based design and assessment of bridges and bridge networks under independent and interacting hazards: emphasis on earthquake, tsunami and corrosion. *Structure and Infrastructure Engineering*, 2020, 16(1), 26-50. <https://doi.org/10.1080/15732479.2019.1604770>.
- Alhamid AK, Akiyama M, Ishibashi H, Aoki K, Koshimura S, Frangopol DM. Framework for probabilistic tsunami hazard assessment considering the effects of sea-level rise due to climate change. *Struct Saf* 2021. (accepted October 6, 2021).
- American Society of Civil Engineers (ASCE). Adapting infrastructure and civil engineering practice to a changing climate. In J.R. Olsen (Ed.), *Committee on Adaptation to a Changing Climate*. Reston: ASCE, 2015. DOI: 10.1061/9780784479193
- ASCE/SEI 7-16 Minimum Design Loads and Associated Criteria for Buildings and Other Structures, 2017, p. 889.
- Athanasopoulou, A., Raposo De M. Do N. E S. De Sotto Mayor, M., Dimova, S., Guido, R., Mercogliano, P., Villani, V., Croce, P., Landi, F., Formichi, P. and Markova, J., Thermal design of structures and the changing climate, Athanasopoulou, A., Raposo De M. Do N. E S. De Sotto Mayor, M., Dimova, S., Dyngeland, T. and Pinto Vieira, A. editor(s), EUR 30302 EN, Publications Office of the European Union, Luxembourg, 2020, ISBN 978-92-76-20777-1, doi:10.2760/40470, JRC121351.
- Bank of Greece. Environmental, Economic and Social Consequences of Climate Change in Greece, Athens, Greece, in Greek, 2011.



Bindschadler RA, Nowicki S, Abe-OUCHI A, Aschwanden A, Choi H, Fastook J, et al. Ice-sheet model sensitivities to environmental forcing and their use in projecting future sea level (the SeaRISE project). *J Glaciol* 2013;59:195–224. <https://doi.org/10.3189/2013JoG12J125>.

Boéro J., Schoefs F., Capra B., Rouxel N., Risk management of French harbour structures. Part 1: Description of built assets, PARALIA, <http://www.paralia.fr/revue/rpa0906.pdf>, Published on line December 21th 2009, 2(6):1-6.11.

Boéro, J., Schoefs, F., Yáñez-Godoy, H., Capra, B. Time-function reliability of harbour infrastructures from stochastic modelling of corrosion. *European Journal of Environmental and Civil Engineering*, 16:10/Nov. 2012, 1187-1201, doi: 10.1080/19648189.2012.688611.

Boéro, J., Schoefs, F., Yáñez-Godoy, H., Capra, B. Time-function reliability of harbour infrastructures from stochastic modelling of corrosion. *European Journal of Environmental and Civil Engineering*; 2014; 16(10)/Nov: 1187-1201, doi: 10.1080/19648189.2012.688611.

Birsan, M., & Dumitrescu, A. Snow variability in Romania in connection to large-scale atmospheric circulation. *Int. J. of Climat.* 2014; 34(1): 134-144.

Bjarnadottir, S., Li, Y., & Stewart, M.G. A probabilistic-based framework for impact and adaptation assessment of climate change on hurricane damage risks and costs. *Structural Safety*, 2011, 33, 173–185.

Bjarnadottir, S., Li, Y. and Stewart, M.G. “Regional Loss Estimation Due To Hurricane Wind And Hurricane-Induced Surge Considering Climate Variability,” *Journal of Structure and Infrastructure Engineering*, 2014, 10(11), 1369-1384.

Boéro, J., Schoefs, F., Yáñez-Godoy, H., Capra, B. Time-function reliability of harbour infrastructures from stochastic modelling of corrosion. *European Journal of Environmental and Civil Engineering*, 16:10/Nov. 2012, 1187-1201, doi: 10.1080/19648189.2012.688611.

Cannon AJ, Jeong DI, Zhang X, Zwiers FW. 2020 Climate-Resilient Buildings and Core Public Infrastructure. An Assessment of the Impact of Climate Change on Climatic Design Data In Canada. 2020, Environment and Climate Change Canada, p. 106.

CEN/TC 250/SC1.T5 Climate Change (final report), April 2018, report No. CEN/TC 250 N 2654, p. 64.

CEN/TC 250/SC1.T6 Interdependence of climatic actions, Probabilistic basis for determination of partial safety factors and load combination factors (background document, final draft), April 2021, report No. SC 1/ N 1735, p. 317.

Church JA, Clark PU, Cazenave A, Gregory JM, Jevrejeva S, Levermann A, et al. Chapter 13: Sea level change. *Clim. Chang.* 2013 Phys. Sci. Basis. Contrib. Work. Gr. I to Fifth Assess. Rep. Intergov. Panel Clim. Chang., Cambridge & New York: Cambridge University Press; 2013, p. 1137–216. <https://doi.org/10.1017/CB09781107415315.026>.

Copernicus Climate Change Service, Climate data needed to address resilience to climate change in standards for infrastructures, February 2018, report No. ECMWF/RFP/C3S\_423, NEN, p. 61.

Croce, P., Formichi, P., Landi, F., Extreme ground snow loads in Europe from 1951 to 2100, *Climate*, 2021, 9(9), p. 20, DOI: 10.3390/cli9090133.

CSLP (2020). Linee Guida per la Classificazione e Gestione del Rischio, la Valutazione della Sicurezza ed il Monitoraggio dei Ponti Esistenti. Ministero delle Infrastrutture e dei Trasporti. Consiglio Superiore dei Lavori Pubblici. <https://bit.ly/3herEYo> [13/05/2021] (In Italian).

Czajkowski, J., K. Simmons, and D. Sutter. An Analysis of Coastal and Inland Fatalities in Landfalling US Hurricanes. *Natural Hazards*, Vol. 59, No. 3, 2011, pp. 1513–1531.

DEFRA. Annual report. ISBN 9781474146265; 2016.

Devendiran, D. K. et al. Impact of Climate Change on Multihazard Performance of River-Crossing Bridges: Risk, Resilience, and Adaptation. *Jour. of Perf. of Cons. Fac.* 2021; 35(1), 04020127.

Elsner, J.B. Evidence in support of the climate change-Atlantic hurricane hypothesis. *Geoph. Res. Letters.* 2006; 33(1–3).

Emanuel, K., Oouchi, K., Satoh, M., Tomita, H. and Yamada, Y., 2010. Comparison of explicitly simulated and downscaled tropical cyclone activity in a high-resolution global climate model. *Journal of Advances in Modeling Earth Systems*, 2(4).

Farreras-Alcover, I., Chryssanthopoulos M.K., & Andersen, J.E. Data-based models for fatigue reliability of orthotropic steel bridge decks based on temperature, traffic and strain monitoring. *International Journal of Fatigue.* 2017; 95: 104-119.

Formichi, P; Danciu, L; Akkar, S; Kale, O; Malakatas, N; Croce, P; Nikolov, D; Gocheva, A; Luechinger, P; Fardis, M; Yakut, A; Apostolska, R; Sousa, M.L; Dimova, S; Pinto, A, Elaboration of maps for climatic and seismic actions for structural design with the Eurocodes, Joint Research Centre (European Commission), 2016, p. 226, ISSN 1831-9424, ISBN 978-92-79-63703-2, DOI 10.2788/534912.

Forzieri, G; Bianchi, A; Marin Herrera, MA; Batista e Silva, F; Feyen, L; Lavalley, C; Resilience of large investments and critical infrastructures in Europe to climate change, Joint Research Centre (European Commission), 2015, p. 175, ISSN 1831-9424, ISBN 978-92-79-54003-5, DOI 10.2788/171858.

Galassi, G., & Spada, G. Sea-level rise in the Mediterranean Sea by 2050: Roles of terrestrial ice melt, steric effects and glacial isostatic adjustment. *Global and Planetary Change*. 2014; 123:55–66.

Garnera A. et al. Impact of climate change on New York City's coastal flood hazard: Increasing flood heights from the preindustrial to 2300 CE. *PNAS*, 2017; 114(45): 11861–11866.

Giordano P.F., Prendergast L.J. and Limongelli M.P. (2020) A framework for assessing the value of information for health monitoring of scoured bridges. *Journal of Civil Structural Health Monitoring*, 10:485–496. <https://doi.org/10.1007/s13349-020-00398-0>.

Giordano P.F., Limongelli M.P., & Prendergast L.J. Impact of climate change on the value of information for bridges at risk of scour. *Life-Cycle Civil Engineering: Innovation, Theory and Practice*, 2021, 435-442.

Hall, J. "Probabilistic climate scenarios may misrepresent uncertainty and lead to bad adaptation decisions." *Hydrological Processes*, 2007, 21(8), 1127-1129.

Hattermann, F. F., et al. Brief communication: An update of the article 'modelling flood damages under climate change conditions - a case study for Germany'. *Nat. Haz. and Earth Syst. Sc.* 2016; 16(7): 1617-1622.

Hausfather, Z., and Peters, G. P. "Emissions—the 'business as usual' story is misleading." *Nature Comment*, 2020, 577, 618-620.

Highways Agency. BD97/12: The Assessment of Scour and Other Hydraulic Actions At Highway Structures. Design Manual for Roads and Bridges. The Stationery Office, UK; 2012.

Hirsch, R. M., & Archfield, S. A. Flood trends: Not higher but more often. *Nature Clim. Change*, 2015; 5(3): 198-199.

Holicky, M; Sykora, M; Forensic investigation of fluvial flood damage in the Czech Republic, *Proceedings of the Institution of Civil Engineers - Civil Engineering*, 2009, 162(5): 33-37, DOI: 10.1680/cien.2009.162.5.33.

Holicky, M; Sykora, M; Assessment of Flooding Risk to Cultural Heritage in Historic Sites, *Journal of Performance of Constructed Facilities*, 2010; 24(5): 432-438, DOI 10.1061/(ASCE)CF.1943-5509.0000053.

Horton et al. Expert assessment of sea-level rise by AD 2100 and AD 2300. *Quaternary Science Reviews*. 2014; 84(15):1-6.

Hov, Ø; Cubasch, U; Fischer, EM et al., Extreme Weather Events in Europe preparing for climate change adaptation, Norwegian Meteorological Institute, 2013, p. 136, ISBN: 978-82-7144-100-5; 978-82-7144-101-2

Imam, B. Climate Change Impact for Bridges Subjected to Scour and Corrosion. *Climate Adaptation Engineering*. 2019; 165–206.

Intergovernmental Panel on Climate Change (IPCC). *Climate Change 2007: The physical science basis*. In S.Solomon, D.Qin, M.Manning, Z.Chen, M.Marquis, K.B.Averyt, M.Tignor, & H.L.Miller (Eds.), Contribution of working group I to the fourth assessment report of the intergovernmental panel on climate change (pp. 1–996). Cambridge: Cambridge University Press, 2007.

IPCC, 2021: Summary for Policymakers. In: *Climate Change 2021: The Physical Science Basis*. Contribution of Working Group I to the Sixth Assessment Report of the Intergovernmental Panel on Climate Change [MassonDelmotte, V., P. Zhai, A. Pirani, S.L. Connors, C. Péan, S. Berger, N. Caud, Y. Chen, L. Goldfarb, M.I. Gomis, M. Huang, K. Leitzell, E. Lonnoy, J.B.R. Matthews, T.K. Maycock, T. Waterfield, O. Yelekçi, R. Yu, and B. Zhou (eds.)]. Cambridge University Press. In Press.

Ishibashi, H., Akiyama, M., Kojima, T., Aoki, K., Koshimura, S., & Frangopol, D. M. Risk estimation of the disaster waste generated by both ground motion and tsunami due to the anticipated Nankai Trough earthquake. *Earthquake Engineering and Structural Dynamics*, 2021; 50:8, 2134-2155. <https://doi.org/10.1002/eqe.3440>

Jacob K, Deodatis G, Atlas J, Whitcomb M, Lopeman M, Markogiannaki O, et al. Responding to climate change in New York State: the ClimAID integrated assessment for effective climate change adaptation in New York State. Final report. *Ann. N. Y. Acad. Sci.*, vol. 1244, New York: 2011, p. 299–362. <https://doi.org/10.1111/j.1749-6632.2011.06331.x>.

Jackson LP, Jevrejeva S. A probabilistic approach to 21st century regional sea-level projections using RCP and High-end scenarios. *Glob Planet Change* 2016; 146:179–89. <https://doi.org/10.1016/j.gloplacha.2016.10.006>.

Jelesnianski, C., Chen, J., and Shaffer, W. A. (1992). "SLOSH: Sea, Lake, and Overland Surges from Hurricanes."

Jentsch, A., Kreyling, J. and Beierkuhnlein, C. (2007). A new generation of climate-change experiments: events, not trends. *Frontiers in Ecology and the Environment*, 5: 365-374. "[https://doi.org/10.1890/1540-9295\(2007\)5%5B365:ANGOCE%5D2.0.CO;2](https://doi.org/10.1890/1540-9295(2007)5%5B365:ANGOCE%5D2.0.CO;2)"

Kallias A.N. and Imam B. Probabilistic assessment of local scour in bridge piers under changing environmental conditions. *Structure and Infrastructure Engineering*, 2016; 12:9, 1228-1241, DOI: 10.1080/15732479.2015.1102295.

Kay, A. L. et al. Climate change impacts on peak river flows: Combining national-scale hydrological modelling and probabilistic projections. *Clim. Risk Manag.* 2021; 31, 100263.

Khelifa, A., et al. D. Impacts of Climate Change on Scour-Vulnerable Bridges: Assessment Based on HYRISK. *Jour. of Infr. Syst.* 2013; 19(2), 138–146.

Knuston, T.R., McBride, J.L., Chan, J., Emanuel, K., Holland, G., Landsea, C., Held, I., Kossin, J.P., Srivastava, A.K., & Sugi, M. Tropical cyclones and climate change. *Nature Geoscience*, 2010; 3, 157–163.

Kopp, R.E., Horton, R.M., Little, C.M., Mitrovica, J.X., Oppenheimer, M., Rasmussen, D.J., Strauss, B. H., Tebaldi, C. Probabilistic 21st and 22nd century sea-level projections at a global network of tide-gauge sites. *Earth's Future*, 2014;2:383–406. <https://doi.org/10.1002/2014ef000239>.

Kundzewicz, Z. W. et al. Large floods in Europe, 1985–2009. *Hydr. Sc. Journal*. 2013; 58(1): 1-7.

Kundzewicz, Z. W. et al. River floods in the changing climate - observations and projections. *Wat. Res. Man.* 2010; 24(11): 2633-2646.

Kvande, T. et al., Present and future of snow loads in Norway, Rapport 102003348, SINTEF, 2013.

Landerer FW, Swenson SC. Accuracy of scaled GRACE terrestrial water storage estimates. *Water Resour Res* 2012; 48. <https://doi.org/10.1029/2011WR011453>.

Lenton, T. M., Rockström, J., Gaffney, O., Rahmstorf, S., Richardson, K., Steffen, W., and Schellnhuber, H. J. "Climate tipping points—too risky to bet against." Nature Publishing Group, 2019.

Levermann A, Winkelmann R, Nowicki S, Fastook JL, Frieler K, Greve R, et al. Projecting Antarctic ice discharge using response functions from SeaRISE ice-sheet models. *Earth Syst Dyn* 2014;5:271–93. <https://doi.org/10.5194/esd-5-271-2014>.

Levillain, J.P. Théorie et méthode de détermination des affouillements, Actes IIèmes JNGCC, Nantes; 1992.

Li, Y. and Stewart, M.G. "Cyclone Damage Risks Caused by Enhanced Greenhouse Conditions and Economic Viability of Strengthened Residential Construction," *Natural Hazards Review*, ASCE. 2011; 12(1), 9-18.

Li L, Switzer AD, Wang Y, Chan CH, Qiu Q, Weiss R. A modest 0.5-m rise in sea level will double the tsunami hazard in Macau. *Sci Adv* 2018; 4. <https://doi.org/10.1126/sciadv.aat1180>.

Lind, N; Pandey, M; Nathwani, J. Assessing and affording the control of flood risk, *Structural Safety*, 31 (2), 2009, pp. 143-147, DOI: 10.1016/j.strusafe.2008.06.013.

Liu, L., Yang, D. Y., and Frangopol, D. M. Network-Level Risk-Based Framework for Optimal Bridge Adaptation Management Considering Scour and Climate Change. *Jour. of Infr. Sys.* 2020; 26(1).

Markogiannaki, O. Climate change and natural hazard risk assessment framework for coastal cable-stayed bridges. *Frontiers of Built Environment*, 2019; 5(116), doi: 10.3389/fbuil.2019.00116.

Marty, C. & Blanchet, J. Long-term changes in annual maximum snow depth and snowfall in Switzerland based on extreme value statistics, *Climatic Change*. 2012; 111(3): 705-721.

Marzeion B, Hock R, Anderson B, Bliss A, Champollion N, Fujita K, et al. Partitioning the Uncertainty of Ensemble Projections of Global Glacier Mass Change. *Earth's Futur* 2020;8. <https://doi.org/10.1029/2019EF001470>.

Mendelsohn, R., Emanuel, K., Chonabayashi, S. and Bakkensen, L. "The impact of climate change on global tropical cyclone damage," *Nature climate change*, 2012; 2(3), pp.205-209.

Merschman, E, Salman, A., Bastidas-Arteaga, E, and Li, Y. Assessment of the Effectiveness of Wood Pole Repair Using FRP Considering the Impact of Climate Change on Decay and Hurricane Risk, *Advances in Climate Change Research*, 2021; (/doi.org/10.1016/j.accre.2020.10.001).

Milly et al. On Critiques of Stationarity is Dead: Whither Water Management? *Water res. Res.* 2015; 51(9): 7785-7789.

Moss RH, Edmonds JA, Hibbard KA, Manning MR, Rose SK, Van Vuuren DP, et al. The next generation of scenarios for climate change research and assessment. *Nature* 2010;463:747–56. <https://doi.org/10.1038/nature08823>.

Mudd, L., D. Rosowsky, C. Letchford, and F. Lombardo. Joint Probabilistic Wind–Rainfall Model for Tropical Cyclone Hazard Characterization. *Journal of Structural Engineering*, Vol. 143, No. 3, 2016, p. 04016195.

NASEM. Attribution of extreme weather events in the context of climate change. Washington, D.C.: The National Academies Press; 2016.

Network Rail. Level 3 Design of Bridges, NR/L3CIV/20, Network Rail Standards, Network Rail, London, UK; 2011.

New, M., Lopez, A., Dessai, S., and Wilby, R. "Challenges in using probabilistic climate change information for impact assessments: an example from the water sector." *Philosophical Transactions of the Royal Society of London A: Mathematical, Physical and Engineering Sciences*, 2007, 365(1857), 2117-2131.

NPCC. Climate Risk Information 2013: Observations, Climate Change Projections, and Maps. C.

Orcesi, A. & O'Connor, A. Interview with IABSE Task Group 6.1: André Orcesi, Chair; Alan O'Connor, Vice Chair: Effects of Climate Change on Infrastructures, *Structural Engineering International*, 31:1, 164-167, DOI: 10.1080/10168664.2021.1872202, 2021.

Orcesi, A. et al., Investigating the Effects of Climate Change on Structural Resistance and Actions, IABSE Symposium Ghent, 2021.

Pendergrass, A. G. What precipitation is extreme?. *Science*. 2018; 360(6393): 1072–1073.

Peters, G. P., Andrew, R. M., Boden, T., Canadell, J. G., Ciais, P., Le Quere, C., Marland, G., Raupach, M. R., and Wilson, C. "The challenge to keep global warming below 2 [deg]C." *Nature Clim. Change*, 2013, 3(1), 4-6.

Pielke, R. A., Jr., J. Gratz, C. W. Landsea, D. Collins, M. A. Saunders, and R. Musulin. Normalized Hurricane Damage in the United States: 1900–2005. *Natural Hazards Review*, Vol. 9, No. 1, 2008, pp. 29–42.

Pregolato, M., Vardanega, P.J., Limongelli, M. P., Giordano, P. F. and Prendergast, L. J. Risk-based scour management: a survey. In *Proceedings of the 10th International Conference on Bridge Maintenance, Safety and Management (IABMAS 2020)*. CRC Press, Boca Raton, USA, 2020.

Rappaport, E.N. Loss of Life in the United States Associated with Recent Atlantic Tropical Cyclones. *Bulletin of the American Meteorological Society*, Vol. 81, No. 9, 2000, pp. 2065–2073.

Rappaport, E. N. Fatalities in the United States from Atlantic Tropical Cyclones: New Data and Interpretation. *Bulletin of the American Meteorological Society*, Vol. 95, No. 3, 2014, pp. 341–346.

Retief, J. et al. Extreme actions and climate change: experience gained in South Africa and Germany. *Civ. Eng. and Env. Systems*. (2014); 31(2): 179-188. Rosenzweig and W. Solecki (Eds.), NPCC2. Prepared for use by the City of New York Special Initiative on Rebuilding and Resiliency, New York, New York; 2013.

Reynard, N.S.; Crooks, S.; Kay, A.L.; Prudhomme, C.; Regionalised impacts of climate change on flood flows, November 2009, Joint Defra/EA Flood and Coastal Erosion Risk Management R&D Programme, R&D Technical Report FD2020/TR, Defra, p. 113.

Richter K, Riva REM, Drange H. Impact of self-attraction and loading effects induced by shelf mass loading on projected regional sea level rise. *Geophys Res Lett* 2013; 40:1144–8. <https://doi.org/10.1002/grl.50265>.

Rogelj, J., Den Elzen, M., Höhne, N., Fransen, T., Fekete, H., Winkler, H., Schaeffer, R., Sha, F., Riahi, K., and Meinshausen, M. "Paris Agreement climate proposals need a boost to keep warming well below 2 C." *Nature*, 2016, 534(7609), 631-639.

Rosowsky, D. V. Assessing climate change impacts on hurricane hazards, in *Climate Change and Its Impacts*, eds C. Murphy, P. Gardoni, and R. McKim (New York, NY: Springer), 93–107, 2018.

Rosowsky, D. V., Mudd, L., and Letchford, C. Assessing climate change impact on the joint wind-rain hurricane hazard for the northeastern US coastline, in *Risk Analysis of Natural Hazards*, eds P. Gardoni, C. Murphy, and A. Rowell (New York, NY: Springer), 113–134, 2016.

Rotunno, R., Chen, Y., Wang, W., Davis, C., Dudhia, J. and Holland, G.J., 2009. Large-eddy simulation of an idealized tropical cyclone. *Bulletin of the American Meteorological Society*, 90(12), pp.1783-1788.

Rózsás, Á. et al. Long-term trends in annual ground snow maxima for the Carpathian region. *App. Mech. and Mat.* 2016; 821(2): 753-760.

Sasidharan, M., Parlikad, A.K. and Schooling, J. Risk-informed asset management to tackle scouring on bridges across transport networks. *Structure and Infrastructure Engineering*. <https://doi.org/10.1080/15732479.2021.1899249>, 2021.

Schoefs, F., Boéro, J., Capra, B. Long-term stochastic modeling of sheet-pile corrosion in coastal environment from on site-measurements, *Journal of Marine Science and Engineering*, 2020, on line: 23 JAN; 8(70), doi:10.3390/jmse8020070.

Serinaldi, F., & Kilsby, C. G. Stationarity is undead: Uncertainty dominates the distribution of extremes. *Adv. in Water Res.* 2015; 77: 17-36.

Snaiki, R. and Wu, T. A Linear Height-Resolving Wind Field Model for Tropical Cyclone Boundary Layer, *Journal of Wind Engineering and Industrial Aerodynamics*, 171, 248-260, 2017a.

Snaiki, R. and Wu, T. Modeling Tropical Cyclone Boundary Layer: Height-Resolving Pressure and Wind Fields, *Journal of Wind Engineering and Industrial Aerodynamics*, 170, 18-27, 2017b.

Snaiki, R. and Wu, T. An Analytical Framework for Rapid Estimate of Rain Rate during Tropical Cyclones, *Journal of Wind Engineering and Industrial Aerodynamics*, 174, 50-60, 2018.

Snaiki, R. and Wu, T. Revisiting Hurricane Track Model for Wind Risk Assessment, *Structural Safety*, 87, 102003, 2020a.

Snaiki, R. and Wu, T. Hurricane Hazard Assessment Along the United States Northeastern Coast: Surface Wind and Rain Fields Under Changing Climate, *Frontiers in Built Environment*, 6, 573054, 2020b.

Snaiki, R., Wu, T., Whittaker, A. and Atkinson, J. Hurricane Wind and Storm Surge Effects on Coastal Bridges under a Changing Climate. *Transportation Research Record*, 2674(6), 23-32, 2020.

Stewart, M. G., Wang, X. and Willgoose, G.R. Direct and Indirect Cost and Benefit Assessment of Climate Adaptation Strategies for Housing for Extreme Wind Events in Queensland, *Natural Hazards Review*, 2014; 15(4): 04014008(12).

Strasser, U. Snow loads in a changing climate: new risks? *Nat. Hazards Earth Syst. Sci.*, 8, 1–8, 2008.

Takano H. and Pooley M. New UK guidance on hydraulic actions on highway structures and bridges. *Proceedings of the Institution of Civil Engineers, Bridge Engineering*, 2021; 174(3): 231-238. <https://doi.org/10.1680/jbren.20.00024>.

Tabari, H. Climate change impact on flood and extreme precipitation increases with water availability. *Sci Rep* 10: 13768; 2020.

Tabari, H. et al. Latitudinal heterogeneity and hotspots of uncertainty in projected extreme precipitation. *Environ. Res. Lett.* 2019; 14.

Taylor KE, Stouffer RJ, Meehl GA. An overview of CMIP5 and the experiment design. *Bull Am Meteorol Soc* 2012;93:485–98. <https://doi.org/10.1175/BAMS-D-11-00094.1>.

TRB. Potential impacts of climate change on U.S. transportation. In: *Transportation research board special report 290. Committee on Climate Change and U.S. Transportation, National Research Council, Washington D.C.*; 2008.

Van den Brink et al. Estimating return periods of extreme events from ECMWF seasonal forecast ensembles. *Int. Jour. of Clim.* 2005; 25(10).

Van de Wal RSW, Zhang X, Minobe S, Jevrejeva S, Riva REM, Little C, et al. Uncertainties in Long-Term Twenty-First Century Process-Based Coastal Sea-Level Projections. *Surv Geophys* 2019;40:1655–71. <https://doi.org/10.1007/s10712-019-09575-3>.

Vermeer M, Rahmstorf S. Global sea level linked to global temperature. *Proc Natl Acad Sci U S A* 2009;106:21527–32. <https://doi.org/10.1073/pnas.0907765106>.

Vickery, P., Skerlj, P., and Twisdale, L. Simulation of hurricane risk in the US using empirical track model. *Journal of structural engineering*, 2000; 126(10), 1222-1237.

World Economic Forum (WEF). *Global risks. Eighth Addition.* Geneva, Switzerland; 2013.

Yang, D. Y., and Frangopol, D. M. Physics-Based Assessment of Climate Change Impact on Long-Term Regional Bridge Scour Risk Using Hydrologic Modeling: Application to Lehigh River Watershed. *Journal of Bridge Engineering*. 2019; 24(11), 04019099.

Yasuda T, Mase H, Mori N. Projection of future typhoons landing on Japan based on a stochastic typhoon model utilizing AGCM projections. *Hydrol Res Lett* 2010;4:65–9. <https://doi.org/10.3178/hrl.4.65>.

Yue, S; Ouarda, T.B.M.J; Bobée, B; Legendre, P; Bruneau, P; The Gumbel mixed model for flood frequency analysis, *Journal of Hydrology*, 1999, 226(1–2): 88-100, DOI: 10.1016/S0022-1694(99)00168-7.

World Economic Forum (WEF). *Global risks. Eighth Addition.* Geneva, Switzerland, 2013.