



**HAL**  
open science

## **New species of Tillinae from Africa (Coleoptera, Cleridae, Tillinae)**

Roland Gerstmeier

► **To cite this version:**

Roland Gerstmeier. New species of Tillinae from Africa (Coleoptera, Cleridae, Tillinae). *Faunitaxys*, 2022, 10 (60), pp.1-8. <hal-03904579>

**HAL Id: hal-03904579**

**<https://hal.science/hal-03904579v1>**

Submitted on 16 Dec 2022

**HAL** is a multi-disciplinary open access archive for the deposit and dissemination of scientific research documents, whether they are published or not. The documents may come from teaching and research institutions in France or abroad, or from public or private research centers.

L'archive ouverte pluridisciplinaire **HAL**, est destinée au dépôt et à la diffusion de documents scientifiques de niveau recherche, publiés ou non, émanant des établissements d'enseignement et de recherche français ou étrangers, des laboratoires publics ou privés.



Distributed under a Creative Commons CC BY-NC-ND 4.0 - Attribution - Non-commercial use - No Derivative Works - International License

# Faunitaxys

*Revue de Faunistique, Taxonomie et Systématique  
morphologique et moléculaire*



Volume 10  
Numéro 60

Décembre 2022

ISSN: 2269 - 6016  
Dépôt légal: Décembre 2022

# Faunitaxys

*Revue de Faunistique, Taxonomie et Systématique  
morphologique et moléculaire*

ZooBank : <http://zoobank.org/79A36B2E-F645-4F9A-AE2B-ED32CE6771CC>

Directeur de la publication, rédacteur, conception graphique et PAO:

*Lionel Delaunay*

Cette revue ne peut pas être vendue

Elle est distribuée par échange aux institutions (version papier)

et sur simple demande aux particuliers (format PDF)

à l'adresse suivante:

AFCFF (Association française de Cartographie de la Faune et de la Flore)

28, rue Voltaire, F- 42100 Saint Etienne

E-mail: [faunitaxys.journal@gmail.com](mailto:faunitaxys.journal@gmail.com)

Elle est disponible librement au téléchargement à partir du site:

<http://faunitaxys.fr/>

La parution de *Faunitaxys* est apériodique

*Faunitaxys* est indexé dans / *Faunitaxys* is indexed in:

- **Zoological Record**

Articles and nomenclatural novelties are referenced by:

- **ZooBank** (<http://zoobank.org>)

Online Archives:

- **HAL** (<https://hal.archives-ouvertes.fr>)

- **Internet Archive** (<https://archive.org>)

Imprimée sur les presses de SPEED COPIE, 6, rue Tréfilerie, F- 42100 Saint-Etienne

**Imprimé le 14 décembre 2022**

# New species of Tillinae from Africa (Coleoptera, Cleridae, Tillinae)

ROLAND GERSTMEIER

Prof. Dr. Roland Gerstmeier, St.-Cajetan-Straße 38, 81669 München, Germany - [r.gerstmeier@tum.de](mailto:r.gerstmeier@tum.de)

- ZooBank: <http://zoobank.org/03727426-842C-4C2F-9703-613CCADC305D> - Orcid: <https://orcid.org/0000-0002-0041-5703>

## Keywords:

Coleoptera; *Diplocladus*;  
Cleridae; checkered beetles;  
Tillinae; Taxonomy;  
*Tillus*; new species.  
*Strotocera*;

**Abstract.** – Five new species of the checkered beetles (Cleridae) subfamily Tillinae from Africa are described and figured.

Gerstmeier R., 2022. – New species of Tillinae from Africa (Coleoptera, Cleridae, Tillinae). *Faunitaxys*, 10(60): 1–8.

DOI: [https://doi.org/10.57800/faunitaxys-10\(60\)](https://doi.org/10.57800/faunitaxys-10(60))

ZooBank: <http://zoobank.org/89040B92-699B-41E2-A7A6-484D2DBA834B>

Received: 07/12/2022 – Revised: 10/12/2022 – Accepted: 12/12/2022

## Introduction

In terms of clerid beetle species-richness, the Ethiopian region is the most diverse region with 1167 described clerid species, or 25% of the world's species (updated after Gerstmeier 2014), with the subfamily Tillinae, alone, represented in Africa (excluding Madagascar) by over 700 species. Research on African Cleridae is documented by only few newer publications (Bartlett & Gerstmeier 2016; Gerstmeier 2015, 2018, 2019; Gerstmeier & Huesmann 2004; Gerstmeier & Salvamoser 2014; Gerstmeier & Weiss 2009; Leavengood Jr. 2015; Opitz 2009, 2011, 2016, 2018, 2019, 2020; Zappi 2018), with only 59 new species described in the last thirteen years. In this publication five new species from the genera *Tillus*, *Diplocladus* and *Strotocera* are newly described with *Tillus* reported from Africa for the first time.

## Material and methods

New species descriptions are based on morphological examination, including preparations of male genitalia, pygidia and sixth abdominal ventrites. For this purpose specimens were hydrated in hot distilled water and the genitalia removed with fine forceps through small incisions made along the sides of the terminal abdominal segments. Aedeagi were cleaned of soft tissue in 10% KOH, cleared in 70% ethyl alcohol and submerged in glycerine, then stored in genital vials pinned below each specimen.

Measurements were made under a stereo microscope using an ocular micrometer. Total body length is the distance measured from the apical clypeal margin to the elytral apices. Elytral length was measured alongside the elytral suture and pronotal length was taken from the dorsal middle line. Pronotal and elytral width were measured at the broadest extreme. Antennomere is abbreviated to 'A'.

Specimens were obtained for study from the following insect collections:

- ISNB: Institut Royal des Sciences Naturelles de Belgique, Brussels
- RGCM: Roland Gerstmeier Collection, Munich, Germany (deposited in Bavarian State Collection of Zoology, ZSM, Munich)
- SMNS: Staatliches Museum für Naturkunde, Stuttgart, Germany.

## Reviewer:

Justin S. Bartlett (*Biosecurity Queensland, Department of Agriculture and Fisheries, Brisbane, Australia*)

ZooBank: <http://zoobank.org/369DC37F-3E93-4EEE-934A-60A44156F153> - Orcid: <https://orcid.org/0000-0003-1925-4046>

## Taxonomic descriptions

Redescription of the genus *Tillus* Olivier, 1790.

**Head.** – Head including eyes wider than pronotal anterior margin; eyes small, protruding, more-or-less reniform, not margined, facetation intermediate to coarse; eye emargination in the middle, deep; distance between eyes more than double eye width. Antennae long, in males distinctly dilated (serrate) from A3, A4 or A5 onwards, in females from A4 (or A5), antennomeres with fine pubescence from dilated antennomeres onwards, antennae in males of *T. flabellicornis* Fairmaire, 1866 and *T. pectinicornis* Abeille, 1892 bifurcate, A11 slender, pointed (Fig. 1); antennae conspicuously distant from eye emargination; antennal ridge leading towards posterior eye margin (Fig. 2). Labrum large, wider than long, anterior margin almost straight. Terminal maxillary palpomere short, stout, cylindrical to spatulate; terminal labial palpomere short, securiform, inner margin short, straight, outer margin long, sensory field narrow, impressed, outer margin corresponding to length of sensory field, but longer than inner margin. Gula large, U-shaped, depressed, gular sutures diverging, gular pads broad, semi-circular, almost adjoining in middle.

**Pronotum.** – Pronotum longer than wide, apex and base slightly dilated, slightly sinuate before middle, anterior transverse impression not distinct; prosternal process narrow, long, slightly dilated distally, almost tightly connected with hypomera; hypomera stout, flattened, pointed, but not very acute; procoxal cavities closed.

**Mesoventrite.** – Mesoventrite anteriorly straight, without anterior mesoventral process (Fig. 3).

**Elytra.** – Elytral base not margined, base narrow, conspicuously dilated towards apex, apices separately rounded.

**Legs.** – Short, tibiae without carina, tarsal sole formula 4-4-4, soles distally more-or-less straight, tibial spur formula 2-2-2, spurs short, stout; claws bidentate, with stout denticle (Fig. 4).

**Remarks.** – The 42 species of *Tillus* listed by Corporaal (1950) are collectively distributed throughout all zoogeographic regions, with the exception of Africa and Oceania, including Australia. Though several species have been transferred to other genera, e.g. *Cymatoderella* Barr, 1962, *Eucymatodera* Schenkling, 1899, *Flabellotilloidea* Gerstmeier & Kuff, 1992, *Isocymatodera* Hintz, 1902, *Tilloidea* Laporte, 1832, *Tillopilo* Winkler, 1958 and *Wittmeridecus* Winkler, 1981, the genus requires a complete taxonomic revision. The new species described herein from Kenya, South Africa and Zambia represent the first records for the genus *Tillus* in the Ethiopian region.



This is an open access article under the terms of the Creative Commons Attribution-NonCommercial-NoDerivs License, which permits use and distribution in any medium, provided the original work is properly cited, the use is non-commercial and no modifications or adaptations are made.

Copyright 2022 The Authors. *Faunitaxys* published by Lionel Delaunay on behalf of the AFCFF (Association française de Cartographie de la Faune et de la Flore).

The above description was based on examination of the following species:

- *Tillus elongatus* (Linné, 1758)
- *Tillus flabellicornis* Fairmaire, 1866
- *Tillus nitidus* (Schenkling, 1917)
- *Tillus pallidipennis* Bielz, 1850
- *Tillus pectinicornis* Abeille, 1892

***Tillus schawalleri* sp. n.**

(Fig. 5, 10-16)

ZooBank: <http://zoobank.org/A3424369-0DB5-4359-9F7C-FC59EC5E5BCC>

**Holotype**, ♂. – RSA, KwaZulu - Natal, Tembe Elephant Park, 17.-19.XI.2002, leg. W. Schawaller (SMNS).

**Paratypes.**

- 2 ex., same label data (RGCM).
- 2 ex., Kenya: Eastern Nyambeni Hills, Ngaja Forest, 1070 m, at light; 0°19'113" N, 38°02'609" E, 02.-04.XII.2002, leg.: C. Häuser, D. Bartsch & A. Zahm (SMNS).
- 2 ex., Kenya: Rift Valley Matthews Range, ca. 35 km N Wamba, 1300-1400 m; 1°10'707" N, 37°18'962" E, 07.-12.XII.2002, leg.: C. Häuser, D. Bartsch & A. Zahm (1 ex. RGCM, 1 ex. SMNS).

**Description**

**Diagnosis.** – *Tillus schawalleri* sp. n. specimens can be identified by the typical coloration: the whole beetle is red brown, glossy, head, pronotum and scutellum are slightly darker, legs are completely black or femora are predominantly yellow-red, with black tips (tibiae and tarsi are black).

**Length.** – 6.17-10.68 mm (7 specimens measured).

**Head.** – Head including eyes wider than pronotal anterior margin, red brown, glossy. With very fine and diffuse punctation; in front of eyes with short, light, anteriorly directed hairs, behind eyes with

longer, brown hairs, not so dense. Eyes conspicuously protruding, eye width 0.30-0.48 mm, eye distance 0.56-0.94 mm, index 1.68-1.96. Antennae black, scarcely reaching pronotal base or exceed base slightly when extended backwards, from A5 dilated distally, antennomeres wider than long, from A5 with dense pubescence, A11 basally slender, then inner side ventricose and conspicuously pointed.

**Pronotum.** – Longer than wide, slightly dilated anteriorly and posteriorly, slightly sinuate before middle ( $l = 1.76-2.02$  mm,  $w = 1.24-1.50$  mm, length to width index 1:1.35-1.42), anterior transverse depression not distinct; with fine, diffuse, but distinct punctation, central part slightly wrinkled, glossy, with long, light, erect, more-or-less dense hairs.

**Scutellum.** – Elliptic, with coarse punctation and wrinkles, posterior margin straight or slightly to distinctly emarginated.

**Elytra.** – Elytra twice as long as wide ( $l = 4.20-6.92$  mm,  $w = 1.92-3.36$  mm, width to length index 1: 2.06-2.38), more evenly dilated towards apex, punctation in rows, diameter of punctation slightly smaller than interstices, punctation towards apex less distinct. Light hairs behind middle mostly directed posteriorly.

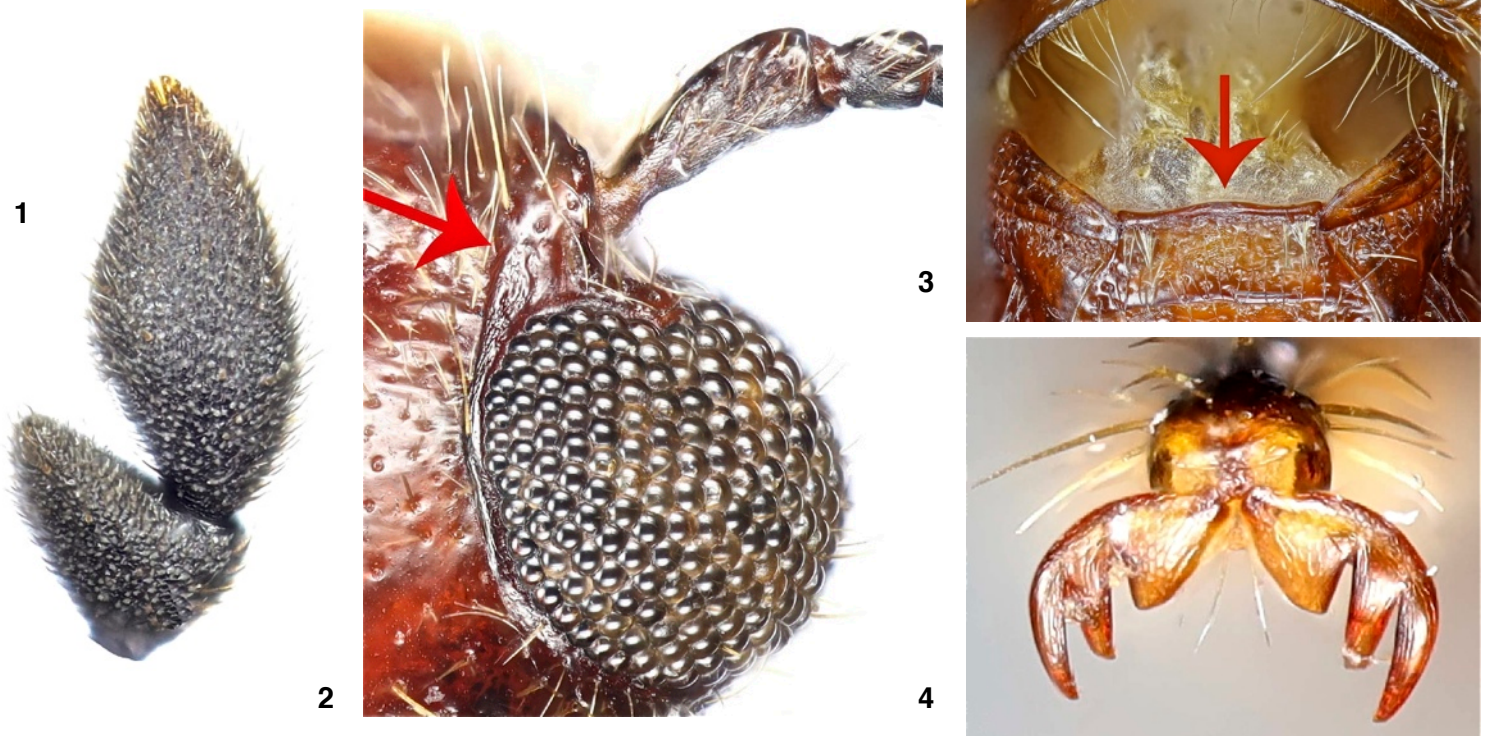
**Legs.** – Short, totally black or femora predominantly yellow red, tip black; legs with long, light, dense, erect hairs.

**Lower surface.** – Prosternal process narrow, long, slightly dilated distally, strongly connected with hypomera. Yellow red to red brown, posterior margin of ventrites V1-V3 bordered yellow.

**Genitalia.** – See Fig. 10-16.

**Distribution.** – South Africa, Kenya.

**Etymology.** – This species is dedicated to Dr. Wolfgang Schawaller, the former curator of Coleoptera in the Staatliches Museum für Naturkunde, Stuttgart, Germany.



**Fig. 1-4.** Tillinae characters.

1. Antennomere 11.
2. Antennal ridge.
3. Anterior margin of mesoventrite (without anterior mesoventral process).
4. Claws, bidentate, with denticle.

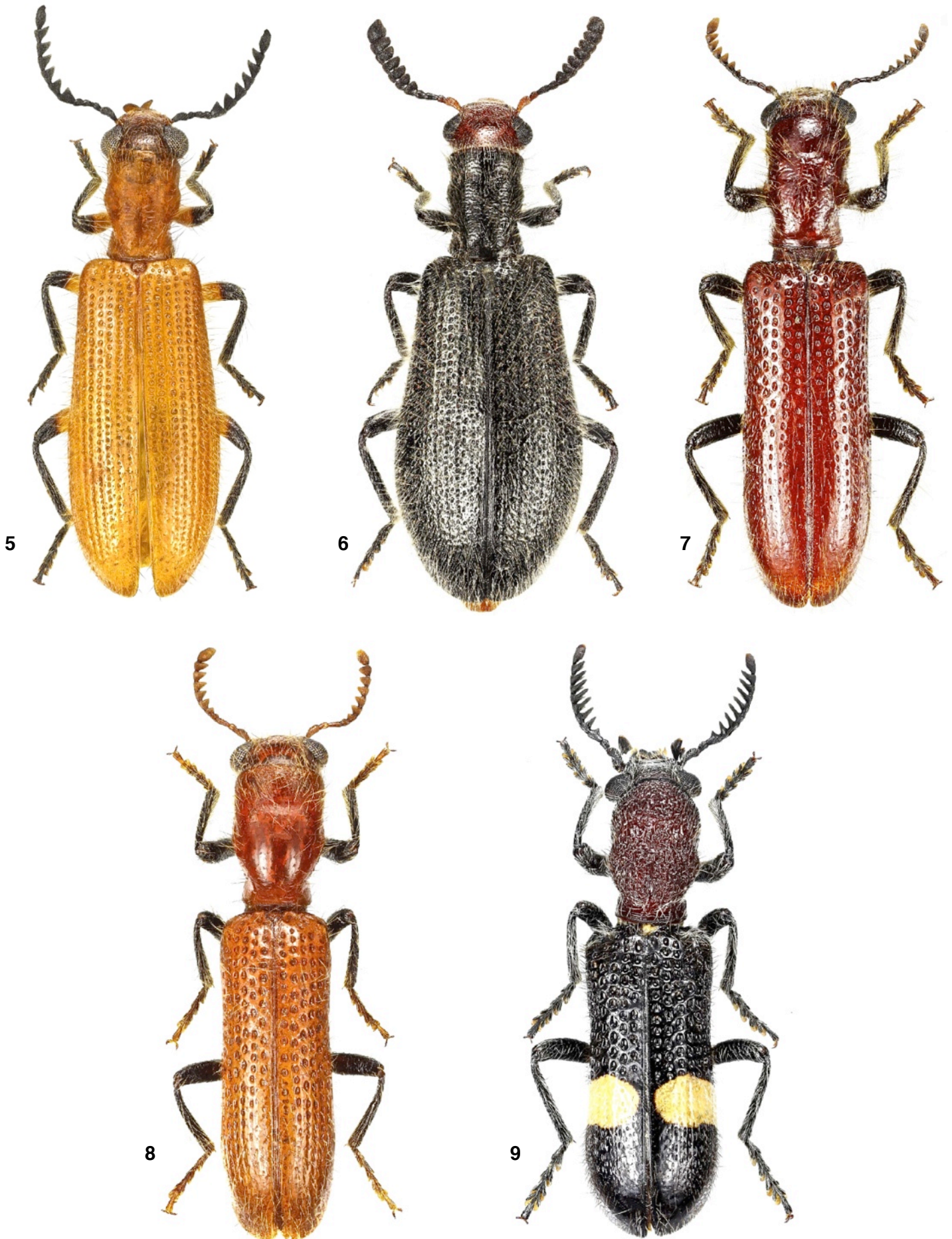


Fig. 5-9. Habitus.

5. *Tillus schawalleri* sp. n. 6. *Tillus zambiensis* sp. n. 7. *Strotocera nodulosa* sp. n. 8. *Strotocera spinosa* sp. n. 9. *Diplocladus keniae* sp. n.

*Tillus zambiensis* sp. n.

(Fig. 6)

ZooBank: <http://zoobank.org/683AA80B-2498-4371-A441-D2BE6E0D6DE3>

**Holotype**, ♀. – Zambia, 150 km South of Kasempa, leg. Wachtel, 11.11.02 (RGCM).

**Paratypes**, ♀♀. – Zambia NW, E of Chisasa, W of Solwezi, 24.10.2008, lgt. Snižek (2 ex. RGCM, 2 ex. ISNB). Zambia NW, NW Kasempa, E of Mutumbwa, 5.11.2008, lgt. Snižek (1 ex. ISNB).

**Description**

**Diagnosis.** – *Tillus zambiensis* sp. n. specimens can be identified by its typical coloration: the whole beetle is black, except the head and the first two antennomeres, which are red brown.

**Length.** – 8.17-9.58 mm (6 specimens measured).

**Head.** – Head including eyes wider than pronotal anterior margin, red brown, glossy, with very fine and diffuse punctation; in front of eyes with short, light, anteriorly directed hairs, behind eyes with longer, brown hairs, not so dense. Eyes protruding, eye width 0.28-0.37 mm, eye distance 0.82-0.92 mm, index 2.49-2.93. Antennae black, except A1 and mostly A2, which are red brown, short, stout, scarcely reaching base when extended backwards; from A5 dilated distally, from A6 broader than long, from A5 onwards with dense, short, light pubescence. A1 nearby ocular notch, antennal ridge pulling backwards towards outer eye margin.

**Pronotum.** – Conspicuously longer than wide, slightly dilated anteriorly and posteriorly, slightly sinuate before middle ( $l = 1.76-2.02$  mm,  $w = 1.24-1.50$  mm, length to width index 1:1.35-1.42), anterior transverse depression not distinct; with fine, diffuse, but distinct punctation, central part slightly wrinkled, glossy, with long, light, erect, more-or-less dense hairs.

**Scutellum.** – Elliptic, with coarse punctation and wrinkles.

**Elytra.** – Elytral base not margined, elytral base narrow ( $l = 5.75-6.67$  mm,  $w = 2.72-3.44$  mm, width to length index 1: 1.77-2.11), ventricously dilated towards apex, apices separately rounded; elytral punctation appears

to be ordered in rows, but due to small punctation in between makes an irregular impression, punctation dense and conspicuous, almost reaching apex. First third with not very dense, light, erect hairs, hairs more dense towards apex and directed posteriorly.

**Legs.** – Short, stout, protibiae slightly curved, meso- and metatibiae almost straight, tibial spurs short, stout, tibiae without carina; legs with long, light, more-or-less dense, erect hairs.

**Lower surface.** – Prosternal process narrow, long, slightly dilated distally, strongly connected with hypomera, hypomera strong, flattened, pointed, but not very acute, prosternal coxal cavities closed. Mesoventrite straight, without anterior mesoventral process. Predominantly black brown, pro- and meso coxae as well as middle of mesoventrite dark brown, glossy, sides of abdominal ventrites also dark brown, central part of ventrite 5 brown black, rest yellow brown, ventrite 6 yellow brown, posterior margin straight to very slightly emarginated. With short, more-or-less depressed, not very dense, light hairs.

**Distribution.** – Only known from Zambia.

**Etymology.** – The specific epithet, *zambiensis*, refers to the country Zambia, where the type specimens were collected.

**Remarks.** – Male specimens are unknown for this species.

*Strotocera nodulosa* sp. n.

(Fig. 7, 17-25)

ZooBank: <http://zoobank.org/0A618D89-A26F-48E2-89ED-8218FF3F6478>

**Holotype**, ♂. – Kenya: Eastern Nyambeni Hills, Ngaja Forest, 1070 m, at light; 0°19'113" N, 38°02'609" E, 02.-04.XII.2002, leg.: C. Häuser, D. Bartsch & A. Zahm (SMNS).

**Paratypes.**

- 6 ex., same label data (2 ex. RGCM, 4 ex. SMNS).

- 2 ex., Kenya: Rift Valley Matthews Range, ca. 35 km N Wamba, 1300-1400 m; 1°10'707" N, 37°18'962" E, 07.-12.XII.2002, leg.: C. Häuser, D. Bartsch & A. Zahm (1 ex. RGCM, 1 ex. SMNS).



**Fig. 10-16.** *Tillus schawalleri* sp. n. (Scale: 1 mm).

**10.** Aedeagus, ventral view. **11.** Aedeagus, lateral view. **12.** Spicular fork. **13.** Tegmen, ventral view. **14.** Phallus, ventral view. **15.** Pygidium. **16.** Ventrite 6.

### Description

**Diagnosis.** – *Strotocera nodulosa* sp. n. males can be easily separated from all other *Strotocera* species by its node on the first abdominal ventrite. The most similar species, *S. weneri* Gerstmeier & Weiss, 2009, is smaller (10.7 mm in length) and has red brown legs, while *S. spinosa* sp. n. is even smaller (8.75 mm in length), has a distal protibial spine and brown tarsi.

**Length.** – 12.3-16.6 mm (9 specimens measured).

**Head.** – Head including eyes wider than pronotal anterior margin, red brown, glossy, with very fine and diffuse punctation; with long, erect, light hairs. Eyes conspicuously protruding, eye width 0.57-0.72 mm, eye distance 1.20-1.48 mm, index 1.82-2.11. Antennae black, short, stout, not reaching base when extended backwards; from A5 slightly dilated inwards, from A6, at least from A7 wider than long, from A6 onwards the whole antennomere with

pubescens of white, short hairs, A11 basally slender, slightly dilated inwards and slightly pointed, outer side more-or-less broadly, evenly rounded, only straight at tip. Labrum amber, more-or-less rectangular, broadly V-shaped. Palpomeres black, tips light brown; last maxillary palpomere stout, short, spatulated; last labial palpomere securiform, inner side short, slightly impressed, outer side long, almost straight, sensory field narrow, borders equal, not impressed. Gula U-shaped, posteriorly bulging, gular sutures diverging, with deep, broad, elliptical pits, pads long, not adjoined.

**Pronotum.** – Longer than wide, widest behind middle ( $l = 3.28-4.52$  mm,  $w = 2.00-2.80$  mm, length to width index 1:1.55-1.67), subparallel, behind middle slightly constricted, towards base slightly dilated, without anterior transverse impression, slightly sinuate behind middle. Red brown, glossy, with very fine and diffuse punctation. Long, erect, light, directed anteriorly.

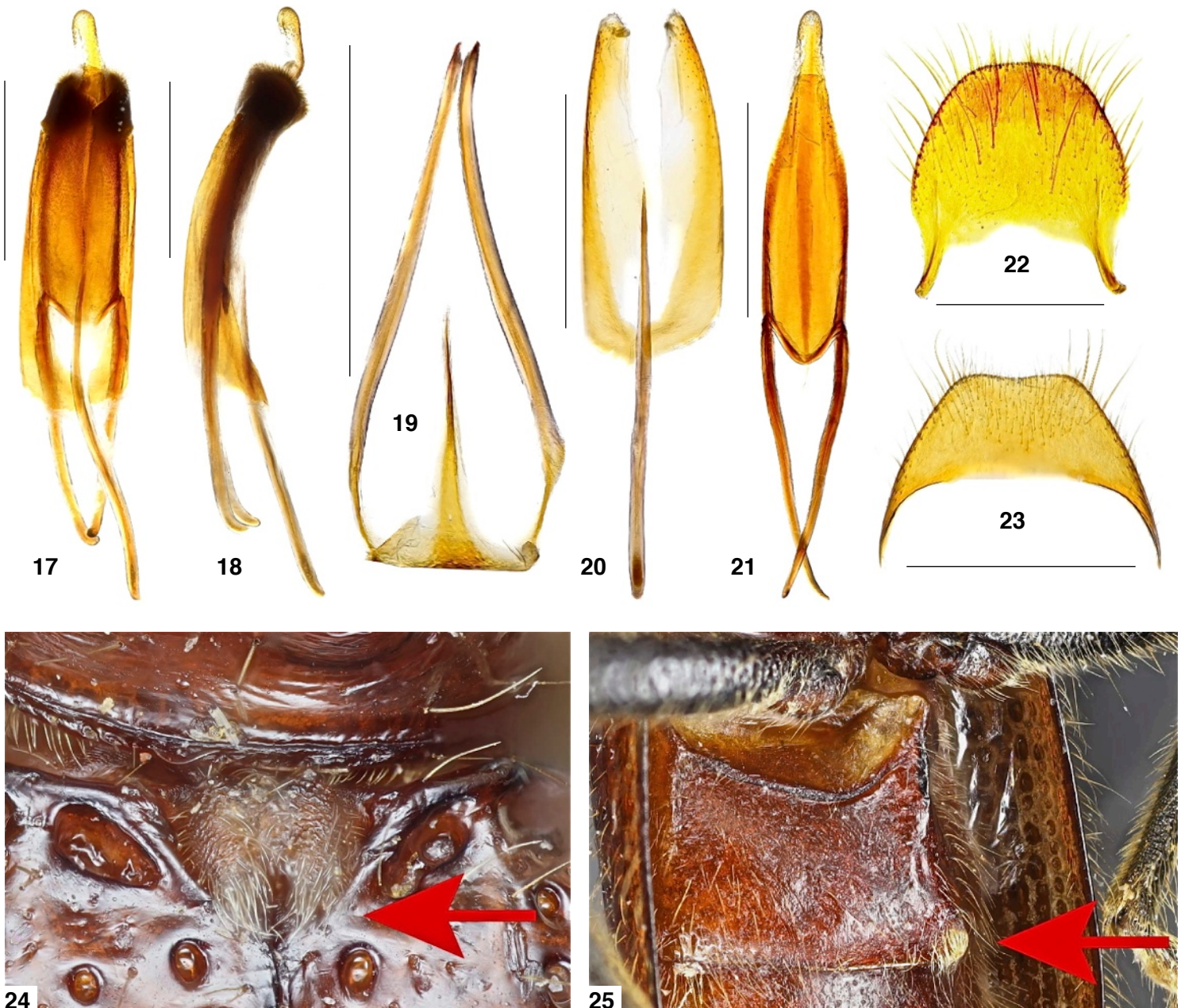


Fig. 17-25. *Strotocera nodulosa* sp. n. (Scale: 1 mm).

17. Aedeagus, ventral view. 18. Aedeagus, lateral view. 19. Spicular fork. 20. Tegmen, ventral view. 21. Phallus, ventral view. 22. Pygidium. 23. Ventrite 6. 24. Scutellum. 25. Apical node of abdominal ventrite 1.

**Scutellum.** – Roundish, bulging, middle longitudinally impressed, posterior margin emarginated (Fig. 24).

**Elytra.** – Subparallel, more than twice as long as wide ( $l = 8.67\text{--}11.19$  mm,  $w = 3.20\text{--}4.58$  mm, length to width index 1: 2.33–2.72). Elytral base not margined, apices broadly rounded separately, punctation in 10 rows, punctation at the end of first third with differing terminal points, rows 1 and 2 ending behind middle, towards outer side the rows of punctation are increasingly longer, disappear before apex, apex almost smooth; diameter of punctures slightly larger than interstices, punctation more-or-less deep and conspicuous, punctures in basal half with stronger basal boundary (but not rasplike). Interstices with very fine microsculpture; long, light, erect hairs, from middle increasingly directed backwards.

**Legs.** – Stout, black, tibiae almost straight, only at insertion slightly curved; tibiae without carina, spurs short, stout; claws simple, with stout, long denticle; soles from sole 2 conspicuously, slightly lobed. Tarsal sole formula 4-4-4, tibial spur formula 2-2-2.

**Lower surface.** – Red brown, legs black, front and middle coxae red brown, soles yellow brown. Pronotal process short, stout, distally very slightly dilated, only slightly (anteriorly) connected with hypomeral tips, front coxal cavities posteriorly narrowly open. Anterior part of mesoventrite straight, without anterior mesoventral process. Abdominal ventrite 1 with a central, apical node (Fig. 25). Light hairs of lower surface short, more-or-less depressed.

**Genitalia.** – See Fig. 17-23.

**Distribution.** – Only known from Kenya.

**Etymology.** – The specific epithet, *nodulosus*, refers to the node on the first abdominal ventrite of males.

***Strotocera spinosa* sp. n.**

(Fig. 8, 26-33)

ZooBank: <http://zoobank.org/16E231AA-7FE0-48E4-AA9F-3DC5FB970A10>

**Holotype**, ♂. – Zimbabwe, Masvingo Prov., 15 km W Birchenogu [= Birchenough], BR. 600 m, 1.12.2005, leg. Halada (SMNS).

**Paratypes.** – 2 ex., Tanzania mer. c. 950 m, 50 km NW Iringa, 7-9.1.2007, 7°40' S; 35°22' E, leg. F. Kantner, pr. Iringa (1 ex. RGCM, 1 ex. SMNS).

**Description**

**Diagnosis.** – *Strotocera spinosa* sp. n. specimens can be easily separated from all other *Strotocera* species by its characteristic spine at the protibial end. The most similar species, *S. weneri* Gerstmeier & Weiss, 2009, is longer (10.7 mm in length) and has red brown legs (*S. spinosa* sp. n. has black legs and brown tarsi).

**Length.** – 8.25–8.75 mm (3 specimens measured).

**Head.** – Head including eyes slightly wider than pronotal anterior margin, red brown, glossy, with very fine and diffuse punctation; with long, erect, light hairs. Eyes conspicuously protruding, eye width 0.38–0.40 mm, eye distance 0.78–0.80 mm, index 1.95–2.05. Antennae red brown to dark brown, short, stout, not reaching base when extended backwards; from A6 dilated inwards and with pubescence, from A7 wider than long; A11 with broad base, outer side slightly, evenly curved, inner side ventricose and almost pulling straight towards tip, in all only slightly pointed.

**Pronotum.** – Longer than wide, widest behind middle ( $l = 2.25\text{--}2.40$  mm,  $w = 1.40\text{--}1.54$  mm, length to width index 1:1.53–1.64), subparallel, constricted towards base, widest just behind middle (not really sinuate), anterior margin finely bulging, anterior transverse

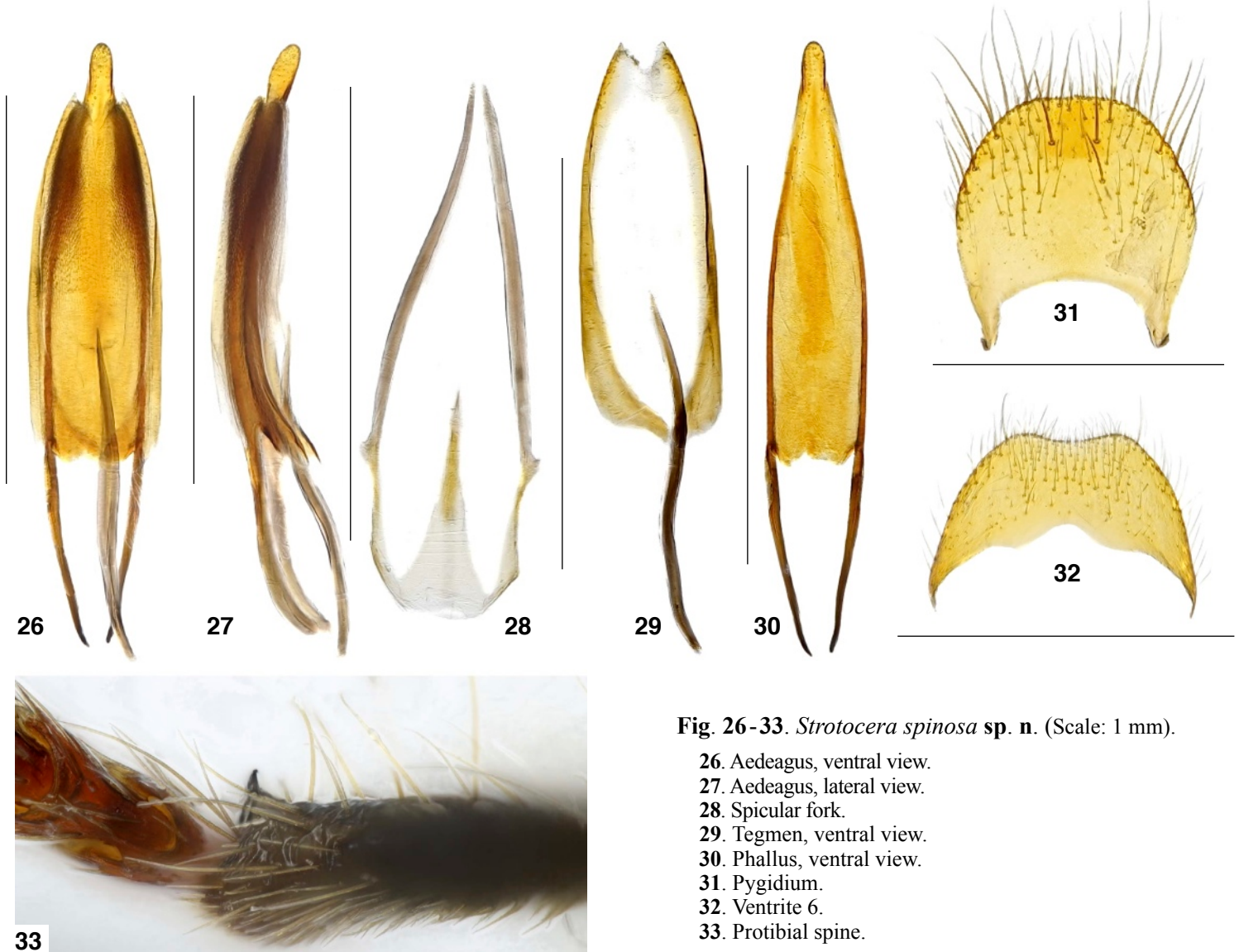


Fig. 26-33. *Strotocera spinosa* sp. n. (Scale: 1 mm).

- 26. Aedeagus, ventral view.
- 27. Aedeagus, lateral view.
- 28. Spicular fork.
- 29. Tegmen, ventral view.
- 30. Phallus, ventral view.
- 31. Pygidium.
- 32. Ventrite 6.
- 33. Protibial spine.

depression weak but visible, middle area anterior of transverse depression smooth, front extremity and sides wrinkled with very diffuse, weak punctation, behind transverse depression smooth with very fine, weak punctation; pronotum with relatively long, light, erect hairs, partially directed anteriorly.

**Scutellum.** – Roundish, posterior margin slightly emarginated.

**Elytra.** – Elytral base margined, elytra long, narrow ( $l = 5.50\text{--}5.58$  mm,  $w = 1.80\text{--}1.96$  mm, width to length index 1: 2.85–3.06), subparallel, apices very broadly, separately rounded, with conspicuous punctation, the first two rows (near suture) regular, then not so strongly regular, the punctures partially in wider distance, row 1 extending towards middle, rows 2–6 towards second third, from row 7 onwards shorter again and quite irregular, diameter of punctation mostly larger than interstices, punctures partially longitudinal, interstices partially with small punctation in between, last third almost smooth, only with diffuse, small punctation, apex more densely punctated, punctures large, but flattened; with long, light, erect hairs and shorter, posteriorly directed hairs.

**Legs.** – Short, stout, femora and tibiae dark red brown or black, tarsi brown, becoming lighter distally, pro- and mesotibiae almost straight, hind tibiae very slightly curved basally, outer side margin of protibial end shortly, ridge-like curved outwards, looking like a spine (Fig. 33); claws including denticle long, stout. Tarsal soles very slightly emarginated.

**Lower surface.** – Posterior margin of gula bulging, inclined inwards, pads spherical, coming nearer in the middle. Palpi brown. Prosternal process relatively long, narrow, slightly dilated distally, partially covered by the roundish hypomerals tips. Without anterior mesoventral process, anterior margin of mesoventrite almost straight.

**Genitalia.** – See Fig. 26–32.

**Distribution.** – Tanzania, Zimbabwe.

**Etymology.** – The specific epithet, *spinosa*, a Latin adjective, refers to the spine-like ridge at the protibial end.

### *Diplocladus keniae* sp. n.

(Fig. 9, 34–40)

ZooBank: <http://zoobank.org/3F49D884-F693-4543-8346-32D97D5F3156>

**Holotype**, ♂. – Kenya - CE, 4.xii.1997, Eastern, Mwingi env., M. Snížek leg. (SMNS).

**Paratype**, ♀. – Kenya, Eastern, Katutu-Kithioko, 27.xi.1999, M. Snížek leg. (RGCM).

#### Description

**Diagnosis.** – *Diplocladus keniae* sp. n. specimens can be identified by the characteristic coloration: head and pronotum are more-or-less red brown, elytra and legs are more-or-less black, a broad, light yellow, transverse fascia is situated behind the middle. Anterior margin of pronotum narrowly bent upwards.

**Length.** – 11.53–14.75 mm (2 specimens measured).

**Head.** – Head including eyes wider than pronotal anterior margin, frons and between eyes black, posterior part dark red brown. Especially black part strongly wrinkled; with long, erect, light hairs. Eyes protruding, eye width 0.58–0.78 mm, eye distance 1.08–1.38 mm, index 1.77–1.86. Antennae black, short, stout, not reaching base when extended backwards; A1 shortly black-red, A2 shortly longer than one half of A1, A3 longer than A2, slightly dilated inwards, tip with pubescens of white, short hairs, from A4 to A9 increasingly bifurcate, upper part longer than lower part, much broader than long, A11 long, slender, very slightly curved outside, inner side almost straight, broadly pointed; the bifurcate part with dense, light, short pubescence. Clypeus brown, labrum dark brown, mandibles black.

**Pronotum.** – Longer than wide, widest in middle ( $l = 3.32\text{--}4.40$  mm,  $w = 2.04\text{--}2.80$  mm, length to width index 1:1.57–1.63), anterior margin of pronotum is narrowly bent upwards, black. Red brown, strongly wrinkled; with long, erect, light, hairs and shorter, erect, black hairs.



Fig. 34–40. *Diplocladus keniae* sp. n. (Scale: 1 mm).

34. Aedeagus, ventral view. 35. Aedeagus, lateral view. 36. Spicular fork. 37. Tegmen, ventral view. 38. Phallus, ventral view. 39. Gygidium. 40. Ventrite 6.

**Scutellum.** – Small, roundish, dark red brown or brown, densely vested with long, whitish or yellowish, more-or-less depressed hairs, posteriorly directed.

**Elytra.** – Up to middle subparallel, then slightly dilated, more than twice as long as wide ( $l = 7.42-9.67$  mm,  $w = 3.12-4.00$  mm, length to width index 1: 2.38-2.42). Elytral base near scutellum margined, apices rounded separately. Elytra with a lateral, light yellowish spot shortly behind humerus and a broad light yellowish transverse fascia behind middle, not reaching outer margin and suture, rounded towards suture. Punctuation with 10 more-or-less regular rows, row 1 (near suture) not reaching the middle of elytra, the other rows reaching far beyond the yellowish transverse fascia; punctuation more-or-less longitudinal, deep, diameter of punctures conspicuously larger than interstices, interstices with very isolated, very small punctuation. Up to middle of elytra with long, erect, black hairs, from middle towards apex with light, more-or-less posteriorly directed hairs, apices almost smooth, with very fine microsculpture.

**Legs.** – Short, stout, more-or-less black, only hind femora basally and in middle dark red brown, tibiae almost straight, all femora wrinkled and vested with long, erect, white hairs, tarsi black, soles light yellowish; soles 1-4 from emarginated to increasingly slightly lobed.

**Lower surface.** – Head red brown, palpomeres black, prosternum and mesoventrite red brown, metaventrite black, abdominal ventrites more-or-less black. Ventrite 5 posteriorly very slightly emarginated. Whole lower surface covered with more-or-less dense, white, posteriorly directed hairs.

**Genitalia.** – See Fig. 34-40.

**Distribution.** – Only known from Kenya.

**Etymology.** – The specific epithet, *keniae*, refers to the location, Kenya, where these specimens has been collected.

## Acknowledgements

The author wishes to thank his friend and fellow clerid worker Justin S. Bartlett for critical review of the manuscript. I am very grateful to Michael and Ditta Amran Balke (ZSM), for her tireless support with the entire photographing process. Special thanks go to Wolfgang Schawaller and Arnaud Faille (SMNS), also to Pol Limbourg and Wouter Dekoninck (ISNB), for their generous and long-lasting loan of African Cleridae specimens.

## References

- Bartlett J.S. & Gerstmeier R., 2016. – *Menieroclerus* gen. nov.: A new genus for *Thanasimodes nigropiceus* (Kuwert, 1893) (Coleoptera: Cleridae). *Zootaxa*, 4168(2): 395-400.
- Gerstmeier R., 2014. – An overview on classification, taxonomic history and biology of Cleridae (Coleoptera, Cleroidea, Cleridae). *Giornale Italiano di Entomologia*, 13(59): 481-494.
- Gerstmeier R., 2015. – *Nonalatus epigaeus* sp. n., a new apterous species of Cleridae from Tanzania (Coleoptera: Cleroidea). *African Invertebrates*, 56(1): 19-24.
- Gerstmeier R., 2018. – Checklist of the checkered beetles of Namibia (Coleoptera, Cleridae). *Namibian Journal of Environment*, 2 A: 7-21.
- Gerstmeier R., 2019. – Supplement to “Checklist of the checkered beetles of Namibia” (Coleoptera, Cleridae). *Namibian Journal of Environment*, 3 B: 8-13.
- Gerstmeier R. & Huesmann A., 2004. – Revision of the Afrotropical species of the genus *Trichodes* Herbst, 1792 (Coleoptera, Cleridae). *Zootaxa*, 694: 1-22.
- Gerstmeier R. & Salvamoser M., 2014. – Revision of the checkered beetle genus *Erymanthus* Spinola, 1841 (Coleoptera, Cleridae, Clerinae). *Zootaxa*, 3755(6): 501-548.
- Gerstmeier R. & Weiss I., 2009. – Revision of the genera *Diplocladus* Fairmaire, 1885 and *Strotocera* Schenkling, 1902 (Coleoptera: Cleridae: Tillinae). *Zootaxa*, 2242: 1-54.
- Leavengood Jr. J.M., 2015. – On the distribution of some African species of *Diplocladus* Fairmaire and *Strotocera* Schenkling (Coleoptera: Cleridae: Tillinae). *Insecta Mundi*, 0411: 1-3.
- Opitz W., 2009. – Revision of the African beetle genus *Romanaeclerus* Winkler (Coleoptera: Cleridae: Korynetinae). *Journal of Afrotropical Zoology*, 5: 53-70.
- Opitz W., 2011. – Classification, natural history, and evolution of Korynetinae Laporte (Coleoptera: Cleridae). Part I. Generic composition of the subfamily and key to genera. *Journal of Afrotropical Zoology*, 7: 29-67.
- Opitz W., 2016. – Classification, natural history, and evolution of the Korynetinae (Coleoptera: Cleridae). Part III. The African genera *Ectospinula* Opitz, new genus, and *Prosymmus* Laporte. *The Coleopterists Bulletin*, 70(3): 429-446.
- Opitz W., 2018. – Classification, natural history, and evolution of the Korynetinae (Coleoptera: Cleridae). Part IV. The new genus *Nolafigura* Opitz, and fourteen new species of *Korynetes* Herbst. *Faunitaxys*, 6(12): 1-17.
- Opitz W., 2019. – Classification, natural history, and evolution of the Korynetinae (Coleoptera: Cleridae). Part V. Taxonomy of the African genera *Avena* Opitz, *Dolichopsis* Gorham, *Notostenus* Spinola, and *Pectobullus* Opitz. *Faunitaxys*, 7(5): 1-13.
- Opitz W., 2020. – Classification, natural history, and evolution of Korynetinae – Part VI. Taxonomic review of the African *Corynetinus* Reitter, 1893 (Coleoptera: Cleroidea, Korynetinae). *Entomologische Zeitschrift, Schwanefeld*, 130(4): 223-234.
- Zappi I., 2018. – Description of a new species and new country records of Tillinae from the Afrotropical region (Coleoptera: Cleridae: Tillinae). *Munis Entomology and Zoology*, 13(2): 378-385.

## Résumé

Gerstmeier R., 2022. – Nouveaux Tillinae d’Afrique (Coleoptera, Cleridae, Tillinae). *Faunitaxys*, 10(60): 1 – 8.

Cinq nouveaux clérons (Cleridae), sous-famille Tillinae sont décrit d’Afrique.

Mots-clés. – Coleoptera, Cleridae, Tillinae, *Tillus*, *Strotocera*, *Diplocladus*, clérons, taxonomie, espèces nouvelles.

## Derniers articles publiés

- Cerda J.-A., 2022. – Descriptions de deux nouvelles espèces du genre *Haemanota* Hampson, 1901, de Guyane et du Panama (Lepidoptera, Noctuoidea, Erebiidae, Arctiinae, Arctiini, Phaegopterina). Dixième note. *Faunitaxys*, 10(42) : 1 – 7. [https://doi.org/10.57800/faunitaxys-10\(42\)](https://doi.org/10.57800/faunitaxys-10(42))
- Lourenço W. R. & Velten J., 2022. – A second new species for the genus *Cretaceoushormiops* Lourenço, 2018 from Cretaceous Burmite (Scorpiones: Protoischnuridae). *Faunitaxys*, 10(43) : 1 – 5. [https://doi.org/10.57800/faunitaxys-10\(43\)](https://doi.org/10.57800/faunitaxys-10(43))
- Lacroix M., Coache A. & Filippi G., 2022. – Contribution à la connaissance des *Apogonia* Kirby, 1819 de São Tomé et Príncipe (Coleoptera, Scarabaeoidea, Melolonthinae, Diplotaxini). *Faunitaxys*, 10(44) : 1 – 9. [https://doi.org/10.57800/faunitaxys-10\(44\)](https://doi.org/10.57800/faunitaxys-10(44))
- Ythier E., 2022. – A new species of *Opisthacanthus* Peters, 1861 from the dry savannah formations of southern Madagascar (Scorpiones: Hormuridae). *Faunitaxys*, 10(45) : 1 – 7. [https://doi.org/10.57800/faunitaxys-10\(45\)](https://doi.org/10.57800/faunitaxys-10(45))
- Vitali F., 2022. – Taxonomic notes on some Asian Cerambycini (Coleoptera, Cerambycidae). *Faunitaxys*, 10(46) : 1 – 4. [https://doi.org/10.57800/faunitaxys-10\(46\)](https://doi.org/10.57800/faunitaxys-10(46))
- Ythier E. & Laborieux L., 2022. – The genus *Buthus* Leach, 1815 (Scorpiones: Buthidae) in France with description of a new species from the Sainte-Baume Massif. *Faunitaxys*, 10(47) : 1 – 13. [https://doi.org/10.57800/faunitaxys-10\(47\)](https://doi.org/10.57800/faunitaxys-10(47))
- Vlasak J. & Santos-Silva A., 2022. – New genus and new species in Cerambycinae from Ecuadorian high Andes. *Faunitaxys*, 10(48) : 1 – 12. [https://doi.org/10.57800/faunitaxys-10\(48\)](https://doi.org/10.57800/faunitaxys-10(48))
- Sherwood D. & Gabriel R., 2022. – *Euthycaelus janae*, a new species and the first record of the subfamily Schismatothelinae from Peru (Araneae: Theraphosidae). *Faunitaxys*, 10(49) : 1 – 4. [https://doi.org/10.57800/faunitaxys-10\(49\)](https://doi.org/10.57800/faunitaxys-10(49))
- Bezark L. G. & Santos-Silva A., 2022. – New species of Central and South American Lamiinae (Coleoptera, Cerambycidae). *Faunitaxys*, 10(50) : 1 – 11. [https://doi.org/10.57800/faunitaxys-10\(50\)](https://doi.org/10.57800/faunitaxys-10(50))
- Lapèze J., 2022. – Un nouveau membracide inféodé aux forêts de nuages : *Cymbomorpha nebulosilvensis* n. sp. (Hemiptera; Auchenorrhyncha; Membracidae). *Faunitaxys*, 10(51) : 1 – 6. [https://doi.org/10.57800/faunitaxys-10\(51\)](https://doi.org/10.57800/faunitaxys-10(51))
- Gereys B., 2022. – Examen critique des synonymies des Vespidae sociaux de France métropolitaine (Hymenoptera : Vespidae) – Partie 1 (Polistinae). *Faunitaxys*, 10(52) : 1 – 21. [https://doi.org/10.57800/faunitaxys-10\(52\)](https://doi.org/10.57800/faunitaxys-10(52))
- Li Z.-C. & Chen J.-H., 2022. – Supplemental notes on *Brososoma valainisi* Barševskis, 2010 (Coleoptera: Carabidae: Broscini). *Faunitaxys*, 10(53) : 1 – 5. [https://doi.org/10.57800/faunitaxys-10\(53\)](https://doi.org/10.57800/faunitaxys-10(53))
- Vlasak J. & Santos-Silva A., 2022. – New Acanthocinini, notes and new records (Coleoptera, Cerambycidae, Lamiinae). *Faunitaxys*, 10(54) : 1 – 14. [https://doi.org/10.57800/faunitaxys-10\(54\)](https://doi.org/10.57800/faunitaxys-10(54))
- Montreuil O. & Keith D., 2022. – Scarabaeoidea (Coleoptera) nouveaux ou peu connus d'Iran. *Faunitaxys*, 10(55) : 1 – 10. [https://doi.org/10.57800/faunitaxys-10\(55\)](https://doi.org/10.57800/faunitaxys-10(55))
- Wang F.-L., 2022. – Three new species of genus *Anomala* Samouelle from Yunnan, China (Coleoptera: Scarabaeidae, Rutelinae). *Faunitaxys*, 10(56) : 1 – 9. [https://doi.org/10.57800/faunitaxys-10\(56\)](https://doi.org/10.57800/faunitaxys-10(56))
- Delahaye N., 2022. – Etude du genre *Braderochus* Buquet, 1852 et description d'une nouvelle espèce du Panama (Coleoptera, Cerambycidae, Prioninae, Prionini). *Faunitaxys*, 10(57) : 1 – 7. [https://doi.org/10.57800/faunitaxys-10\(57\)](https://doi.org/10.57800/faunitaxys-10(57))
- Barria M.D., Clavijo-Bustos J. & Ramírez-Ponce A., 2022. – A new species of *Phyllophaga* (s. str.) *schizorhina* species group (Coleoptera: Scarabaeidae: Melolonthinae: Rhizotrogini) from Panama. *Faunitaxys*, 10(58) : 1 – 5. [https://doi.org/10.57800/faunitaxys-10\(58\)](https://doi.org/10.57800/faunitaxys-10(58))
- Vitali F., 2022. – A study of the *Acalolepta permutans* species group (Coleoptera, Cerambycidae). *Faunitaxys*, 10(59) : 1 – 7. [https://doi.org/10.57800/faunitaxys-10\(59\)](https://doi.org/10.57800/faunitaxys-10(59))

## Faunitaxys est échangée avec les revues suivantes (« print versions ») :

- Annali del Museo Civico di Storia Naturale G. Doria (Italie)
- Boletín de la Asociación española de Entomología (Espagne)
- Boletín de la Sociedad Andaluza de Entomología (Espagne)
- Bollettino del Museo di Storia Naturale di Venezia (Italie)
- Bulletin de la Société linnéenne de Lyon (France)
- Bulletin of Insectology (Italie)
- Heteropterus Rev. Entomol. (Espagne)
- Israel Journal of Entomology (Israël)
- Klapalekiana (République Tchèque)
- Koleopterologische Rundschau (Allemagne)
- Memorie del Museo Civico di Storia Naturale di Verona (Italie)
- Nova Supplementa Entomologica (Allemagne)
- Proceedings of the Entomological Society of Washington (USA)
- Revue suisse de Zoologie (Suisse)
- Spixiana (Allemagne)
- Stuttgarter Beiträge zur Naturkunde A, Biologie (Allemagne)
- Zoosystematica Rossica (Russie)

# Faunitaxys

*Volume 10, Numéro 60, Décembre 2022*

## SOMMAIRE

Nouveaux Tillinae d'Afrique (Coleoptera, Cleridae, Tillinae).

*Roland Gerstmeier* ..... 1 – 8

## CONTENTS

New species of Tillinae from Africa (Coleoptera, Cleridae, Tillinae).

*Roland Gerstmeier* ..... 1 – 8



### *Illustration de la couverture :*

The **Kafue lechwe** (*Kobus leche kafuensis*) is a subspecies of the southern lechwe. It is endemic to the Kafue Flats, Zambia. It is listed on the IUCN Red List as vulnerable (from Wikipedia).

Crédits:

© **Roland Gerstmeier** : Fig. 1-40 & couverture.