



HAL
open science

Settled dust in preschools: characterization and genotoxicity of trace metals and polycyclic aromatic hydrocarbons

Rebecca Castel, Virginie Tassistro, Stéphanie Lebarillier, Magalie Claey-Bruno, Mathieu Izard, Franck Marot, Yves Noack, Thierry Orsière, Laure Malleret

► To cite this version:

Rebecca Castel, Virginie Tassistro, Stéphanie Lebarillier, Magalie Claey-Bruno, Mathieu Izard, et al.. Settled dust in preschools: characterization and genotoxicity of trace metals and polycyclic aromatic hydrocarbons. Goldschmidt Conference 2021, Jul 2021, Lyon, France. . hal-03903491

HAL Id: hal-03903491

<https://hal.science/hal-03903491v1>

Submitted on 16 Dec 2022

HAL is a multi-disciplinary open access archive for the deposit and dissemination of scientific research documents, whether they are published or not. The documents may come from teaching and research institutions in France or abroad, or from public or private research centers.

L'archive ouverte pluridisciplinaire **HAL**, est destinée au dépôt et à la diffusion de documents scientifiques de niveau recherche, publiés ou non, émanant des établissements d'enseignement et de recherche français ou étrangers, des laboratoires publics ou privés.

SETTLED DUST IN PRESCHOOLS: CHARACTERIZATION AND GENOTOXICITY OF TRACE METALS AND POLYCYCLIC AROMATIC HYDROCARBONS

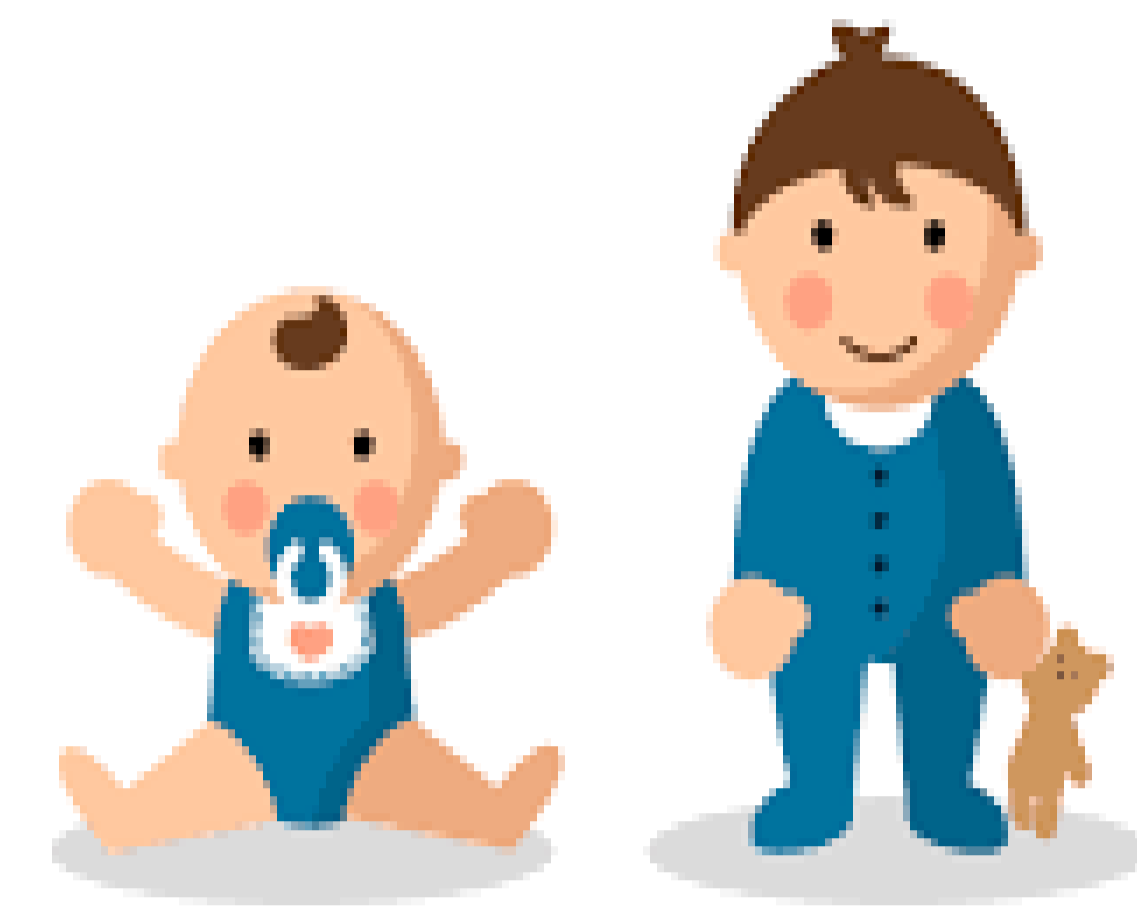
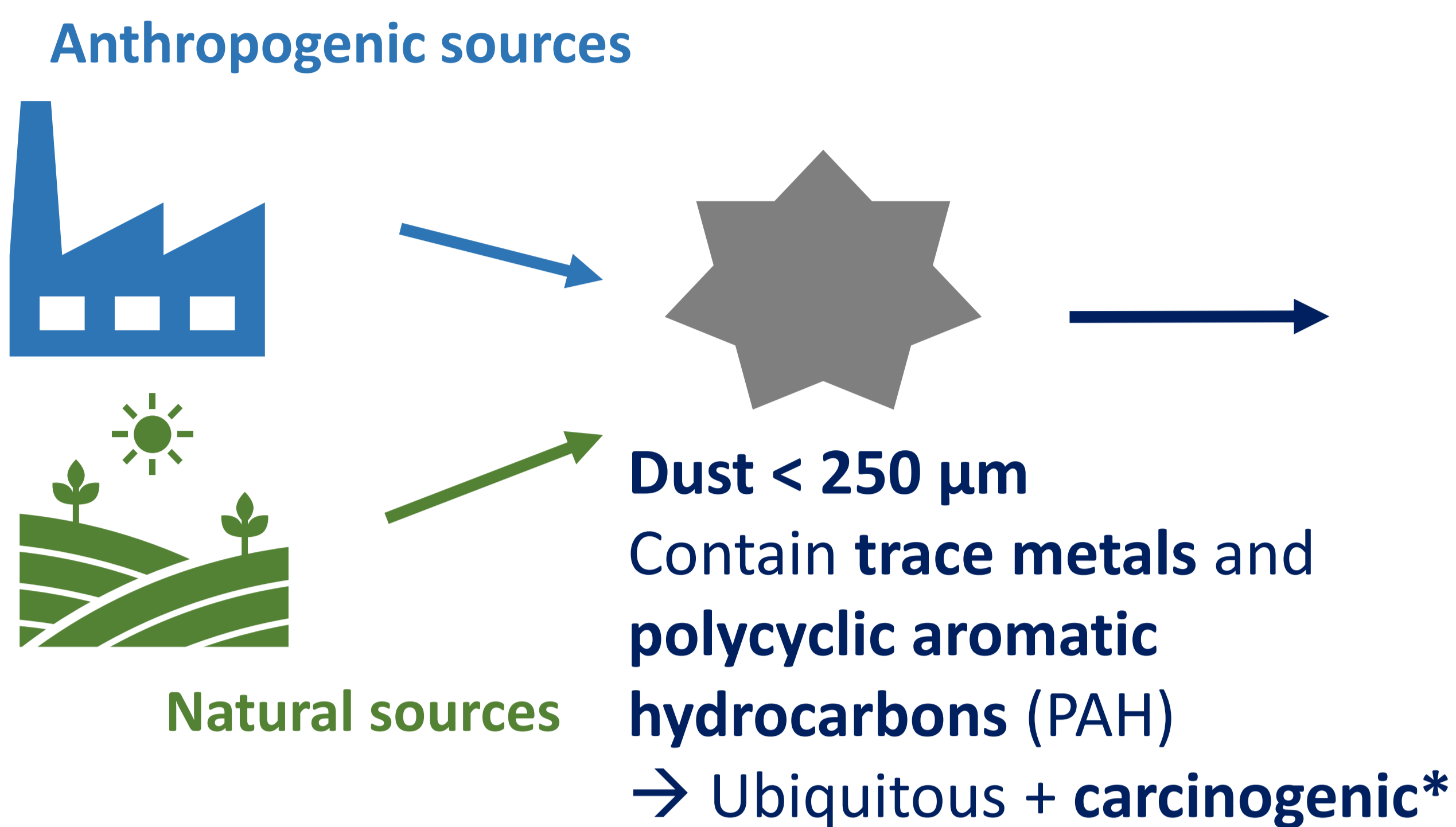


GOLDSCHMIDT[®]
VIRTUAL · 2021
4-9 JULY

R. Castel (a,b), V. Tassistro (b), S. Lebarillier (a), M. Claeys (b), M. Izard (c),
F. Marot (d), Y. Noack (e), T. Orsière (b), L. Malleret (a)

(a) Laboratoire Chimie Environnement, AMU, CNRS, ECCOREV FR, Marseille, France ; (b) IMBE, Equipe Biomarqueurs Environnement Santé, AMU, CNRS, IRD, AU, Marseille, France; (c) ATMOSUD, Marseille, France ; (d) ADEME, Angers, France; (e) CEREGE, AMU, CNRS, Collège de France, IRD, Aix-en-Provence, France

CONTEXT



Involuntary ingestion:
20 - 100 mg of dust per day
→ Early biological events

HYPOTHESIS

Children below 6 years old could be exposed to trace metals and PAH *via* ingestion of settled dust.

AIMS

1. **Characterize** settled dust in preschools located in different environmental contexts
2. **Evaluate DNA and chromosomal damage** induced by **pollutants' mixtures** and **settled dust** in gastric cells

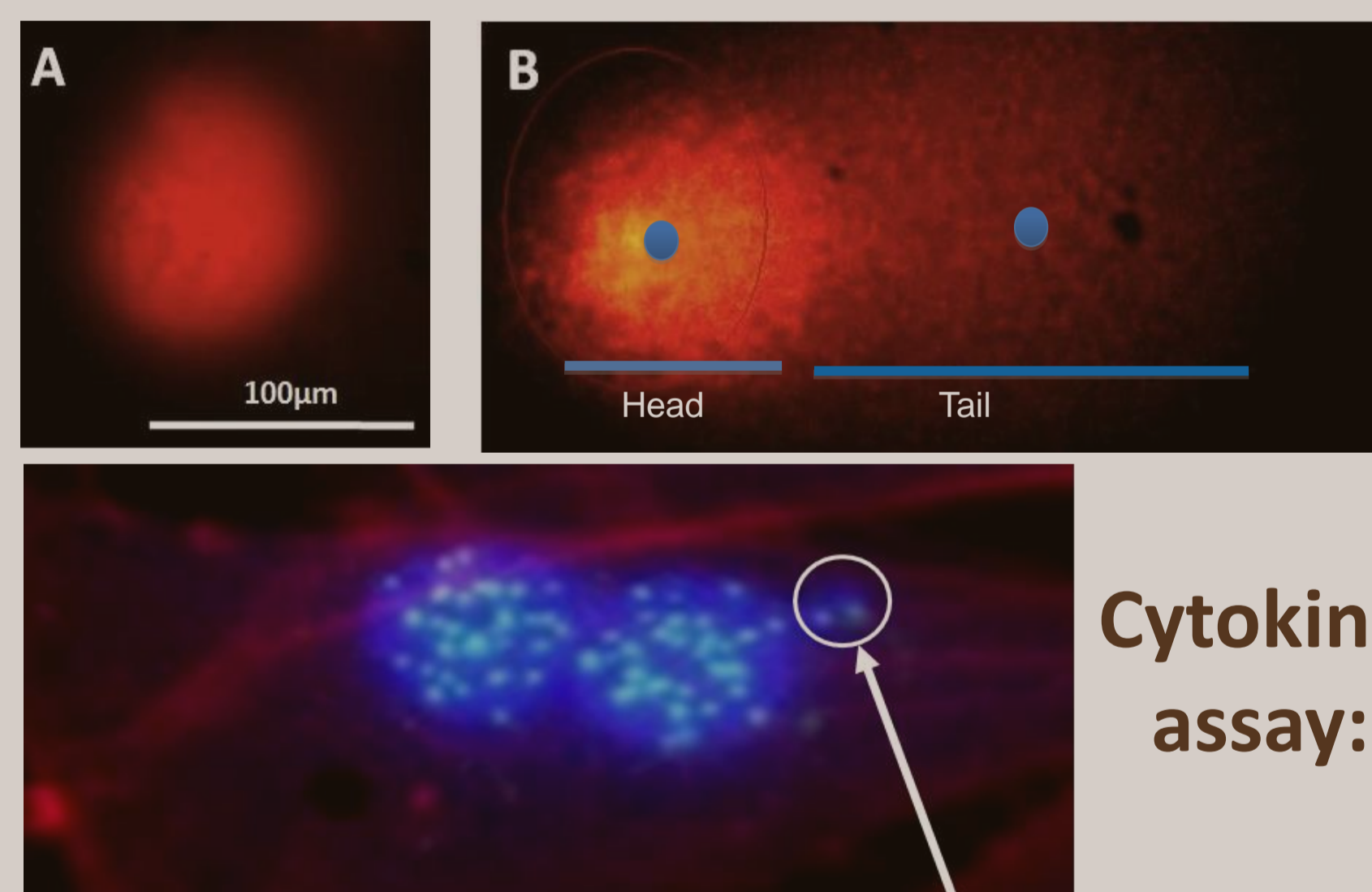
MATERIALS & METHODS

Samplings of settled dust in schools of Bouches-du-Rhône (France) 2015 -2016 / 2020-2021

Physical and chemical characterization of settled dust
PAH: HPLC-PFD / Trace metals: ICP-MS



In vitro toxicity on gastric cells of settled dust extracts and pollutants mixtures
Cytotoxicity & Genotoxicity assays

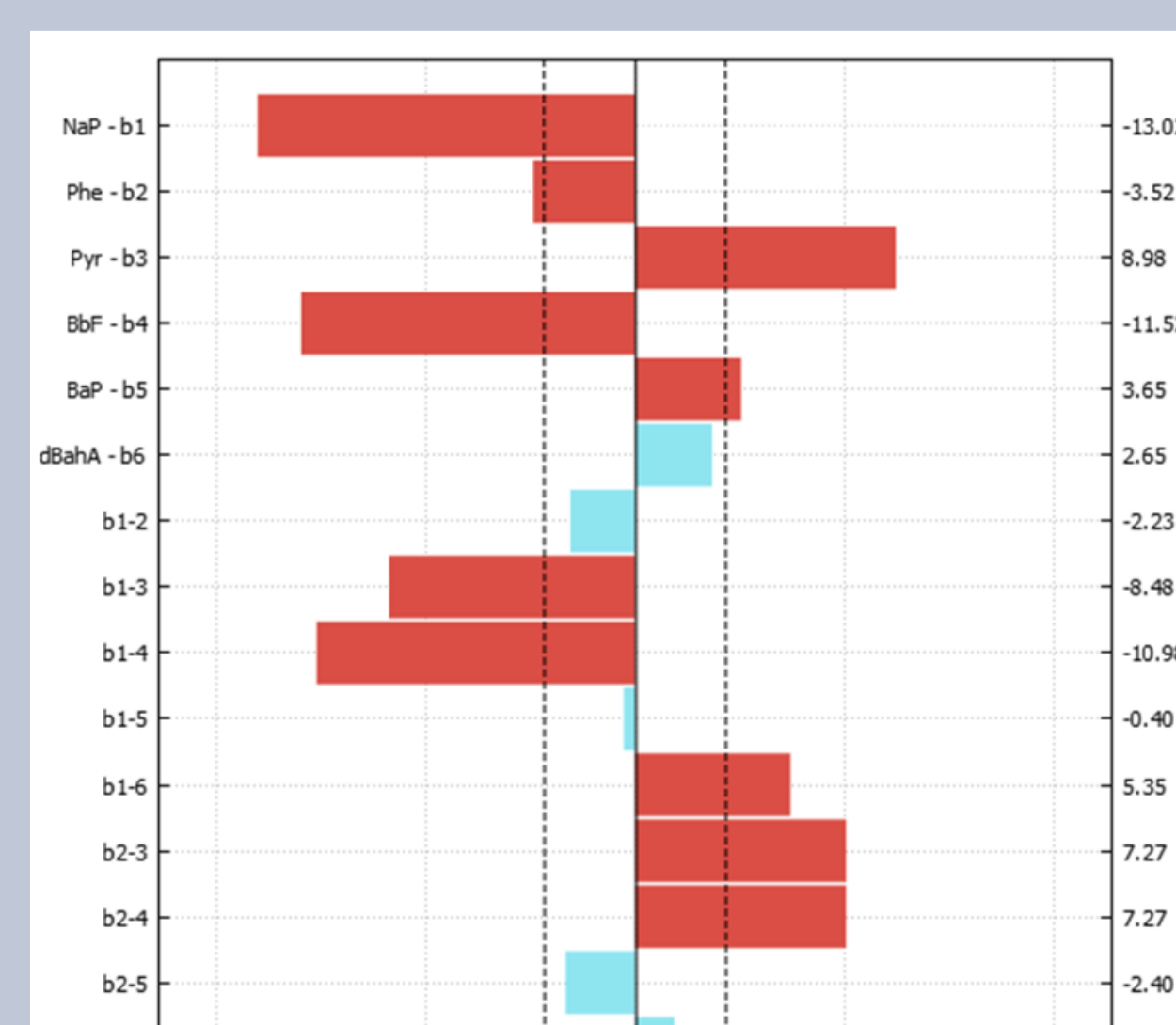


Comet assay:
DNA damage

Cytokinesis Block Micronucleus assay: chromosomal damage

Mixture genotoxicity of 6 PAH and 6 metals of interest by using experimental designs

Exp.	NaP	Phe	Pyr	BbF	BaP	dBahA
1	-	-	-	-	-	-
2	-	+	-	+	-	+
...						
21	+	-	+	-	+	+
22	+	+	+	+	+	+



Type of graph to be obtained

PRELIMINARY RESULTS

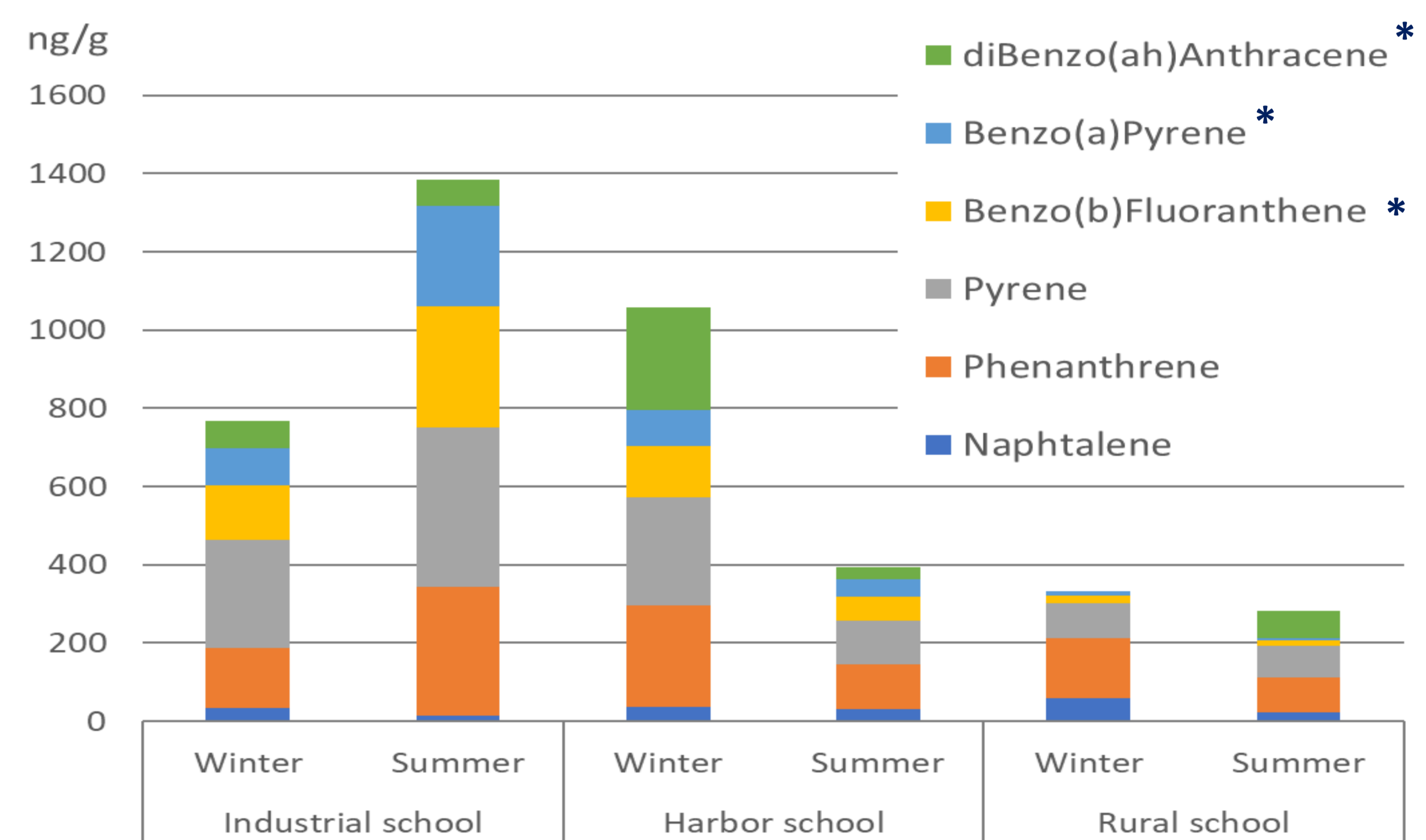


Figure 1: concentrations of the 6 PAHs of interest in the different preschools, in winter and summer

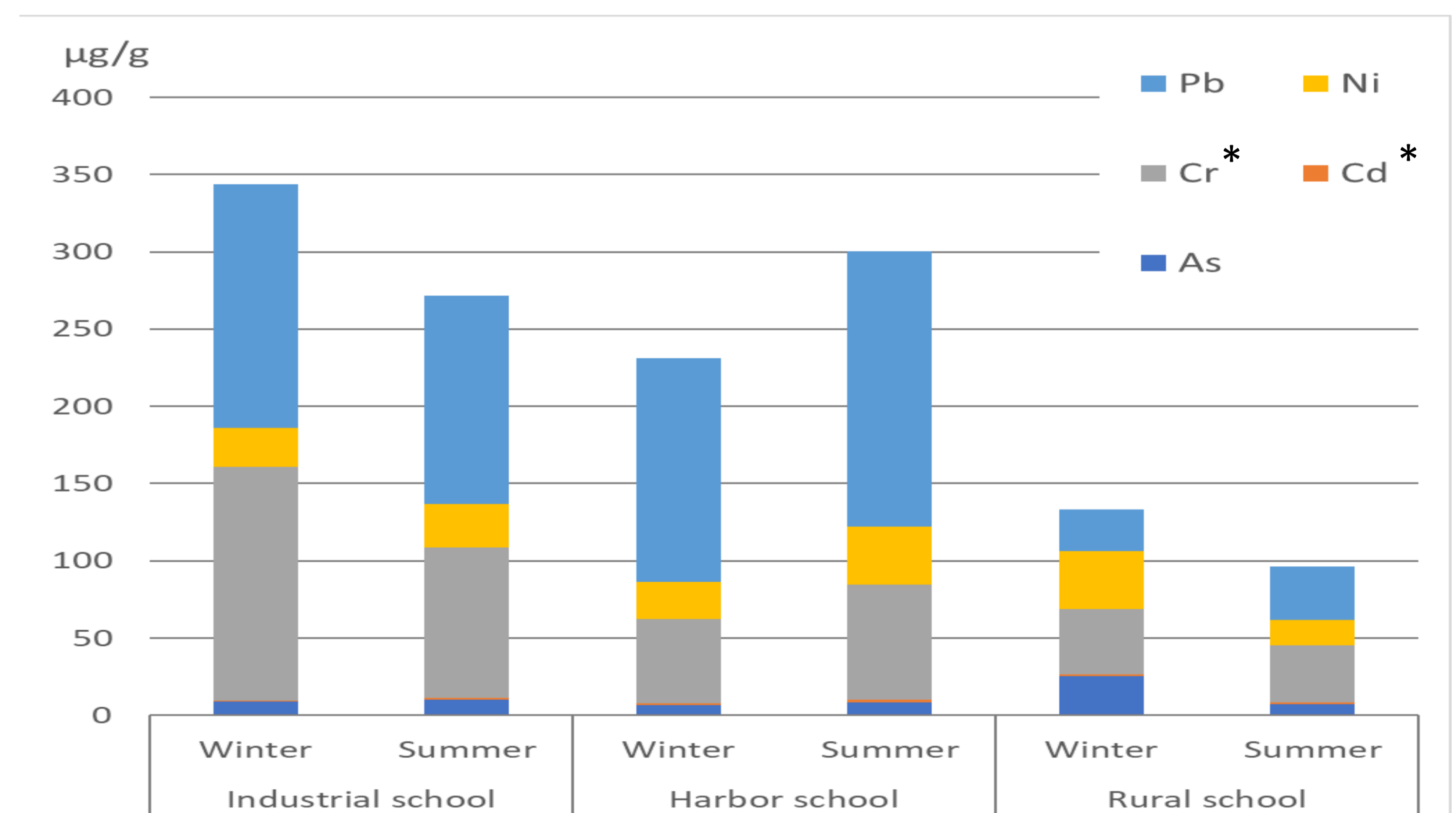


Figure 2: concentrations of the 5 trace metals of interest in the different preschools, in winter and summer

PERSPECTIVES

Contribution to the understanding of the:

- input from soil and aerial deposition of trace metals and PAH on settled dust,
- interactions between compounds in the occurrence of genotoxic hazard,
- hazards due to soil or settled dust ingestion.

Proposition of alternative *in vitro* tools for human health risk assessment due to mixtures of micropollutants in contaminated soils.