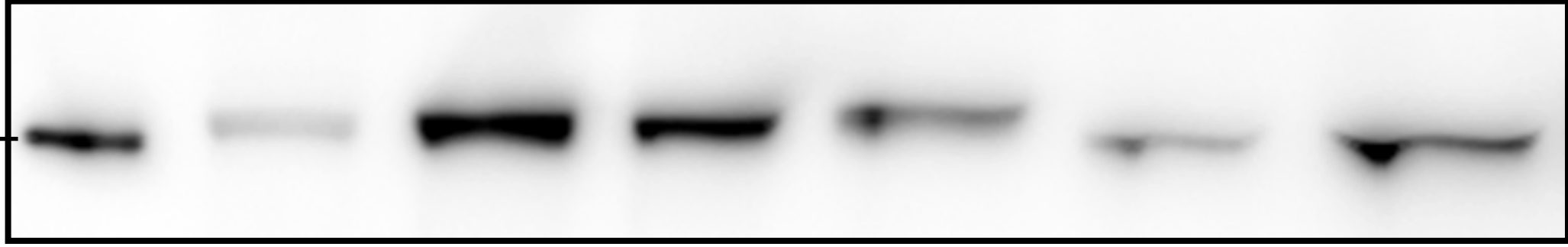


72 kDa



Human recombinant HSPA

Chorismus antarcticus
66.40°S, 140.01°E

Euphausia superba
65.30°S, 139.57°E

Euphausia superba
64.11°S, 111.12°E

Euphausia crystallorophias
66.19°S, 139.59°E

Thysanoessa inermis
79.95°N, 12.33°E

Euphausia superba
62.29°S, 58.38°W