

EAA 2018

BARCELONA,
5-8 SEPTEMBER

REFLECTING FUTURES



Session 368:
Archaeology of Movement

A NEW REGIONAL MIGRATION APPROACH IN ARCHAEOLOGY

RURAL MIGRATION IN NORMANDY (FRANCE) DURING THE ROMAN PERIOD

Jérôme SPIESSER, PhD student,
University Paris 1 Panthéon-Sorbonne, UMR 7041 ArScAn
Jerome.spiesser@hotmail.fr



A lot of actual French towns have been created by the emperor Augustus, 2 000 years ago.



Paris during the Roman period (J.-C. GOLVIN)



Emperor Augustus bust
(www.villa-culture.fr)

JÉRÔME SPIESSER:

A NEW REGIONAL MIGRATION
APPROACH IN ARCHAEOLOGY

EAA 2018

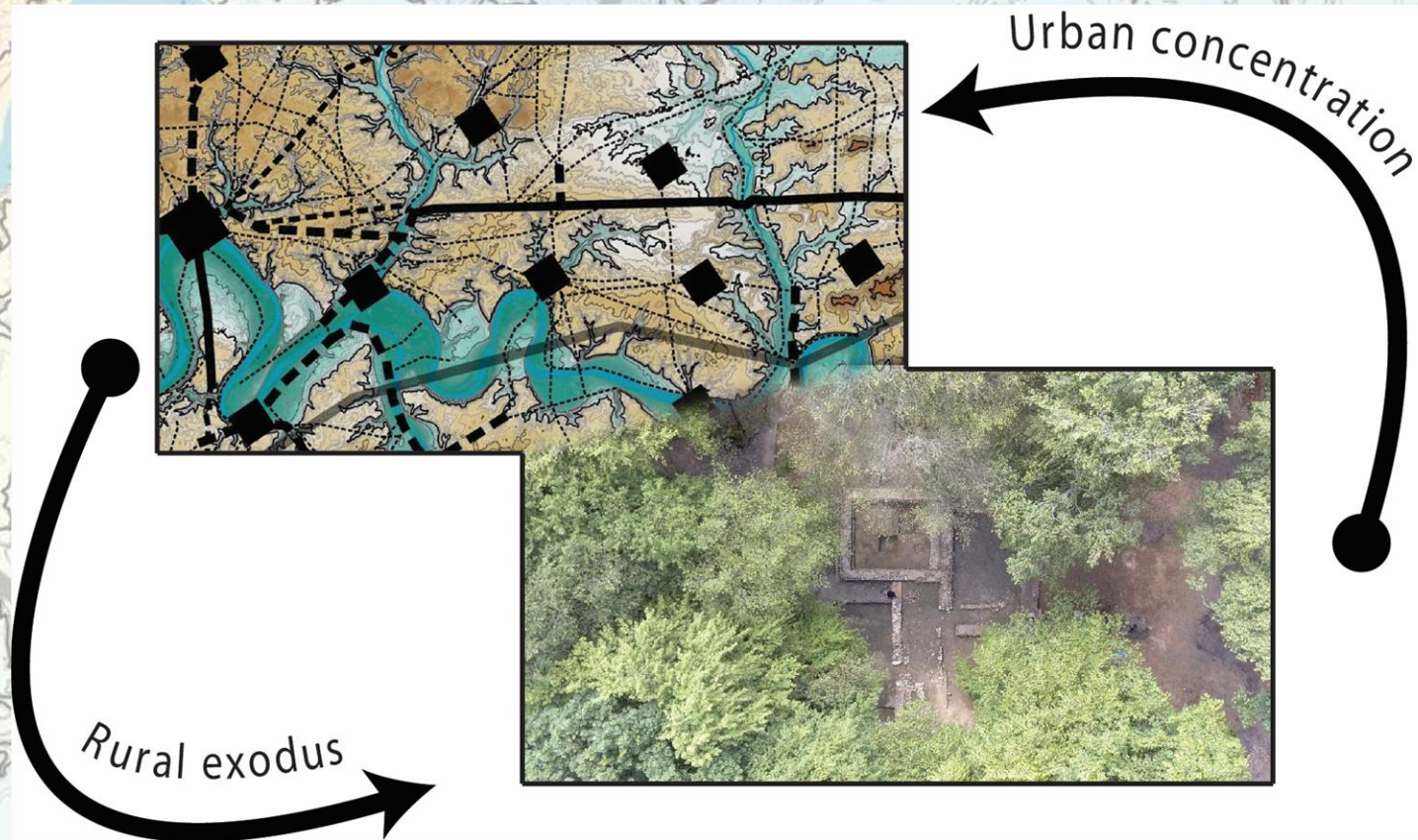
BARCELONA,
5-8 SEPTEMBER

REFLECTING FUTURES



Has the development of new towns created a rural exodus ?

Is the demographic explosion the origin of city developments?



JÉRÔME SPIESSER:

A NEW REGIONAL MIGRATION
APPROACH IN ARCHAEOLOGY

EAA 2018

BARCELONA,
5-8 SEPTEMBER

REFLECTING FUTURES



Since 1990, 0,5% of the French territory was archaeological diagnosed. These operations revealed thousands of Protohistoric and Roman farms.



Photography of diagnostic archaeology (J. SPIESSER)



Photography of preventive archaeology (J. SPIESSER)



Photography of new building (J. SPIESSER)

JÉRÔME SPIESSER:

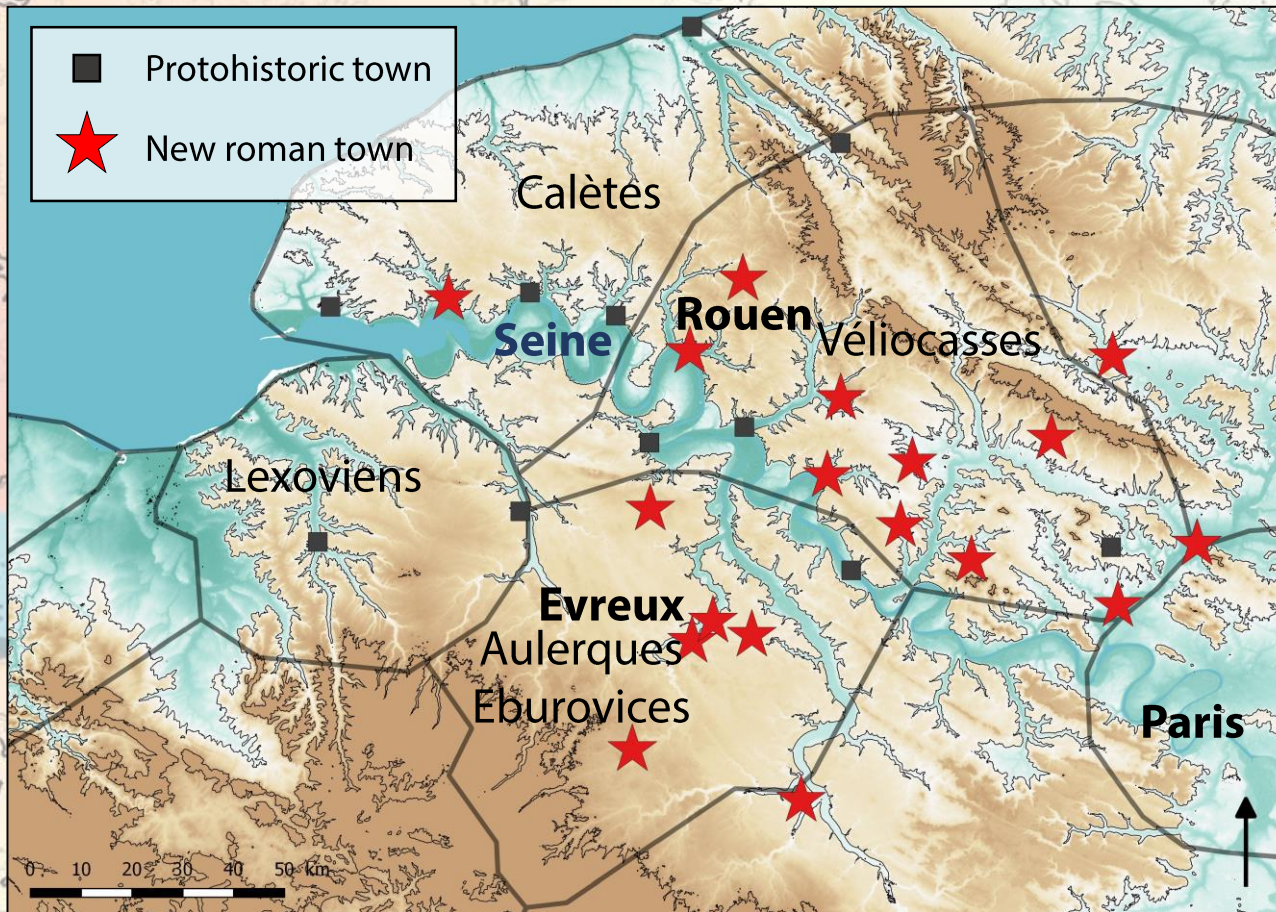
A NEW REGIONAL MIGRATION
APPROACH IN ARCHAEOLOGY

EAA 2018

BARCELONA,
5-8 SEPTEMBER

REFLECTING FUTURES





Map of the new roman towns in Normandy (France) (J. SPIESSER)



Map of roman provinces in 11th century AC (J. SPIESSER)

Normandy is an ideal area to study this question, because the new roman towns were created only in the southeast of the region.

JÉRÔME SPIESSER:

A NEW REGIONAL MIGRATION APPROACH IN ARCHAEOLOGY

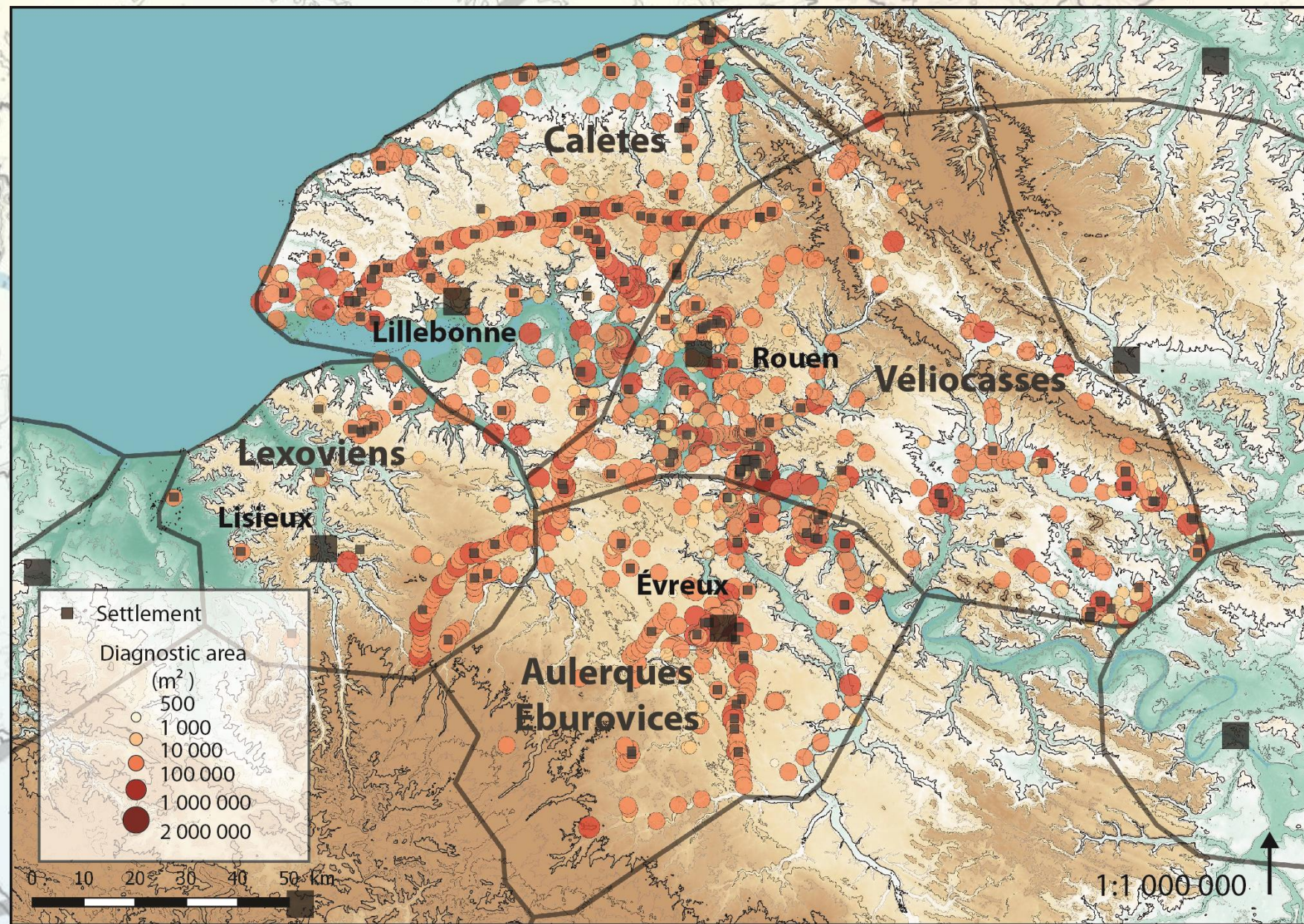
EAA 2018

BARCELONA,
5-8 SEPTEMBER

REFLECTING FUTURES



Since 1990, 1182 archaeological diagnostic were conducted in the low valley of the Seine. They unearthed 232 protohistoric or roman settlements.



Map of preventive archaeology in Normandy (France) (J. SPIESSER)

JÉRÔME SPIESSER:

A NEW REGIONAL MIGRATION
APPROACH IN ARCHAEOLOGY

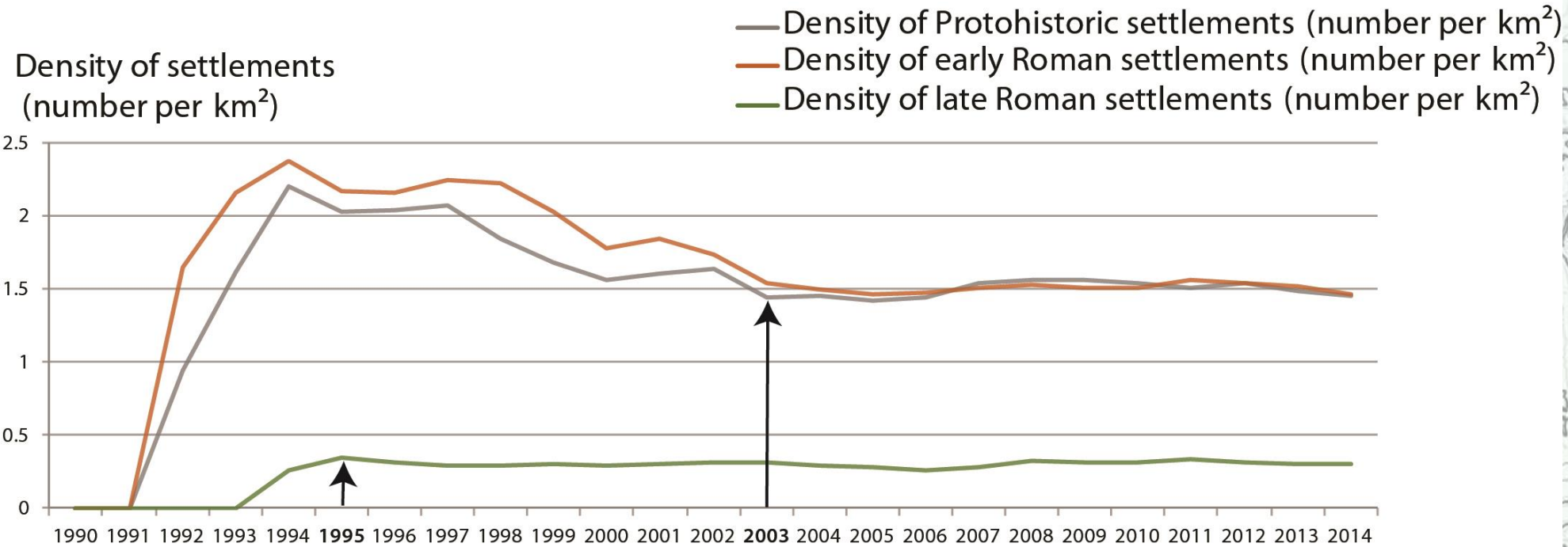
EAA 2018

BARCELONA,
5-8 SEPTEMBER

REFLECTING FUTURES



In Normandy, our knowledge about the density of Protohistoric and roman settlements has reached a stable state in 2003



JÉRÔME SPIESSER:

A NEW REGIONAL MIGRATION
APPROACH IN ARCHAEOLOGY

EAA 2018

BARCELONA,
5-8 SEPTEMBER

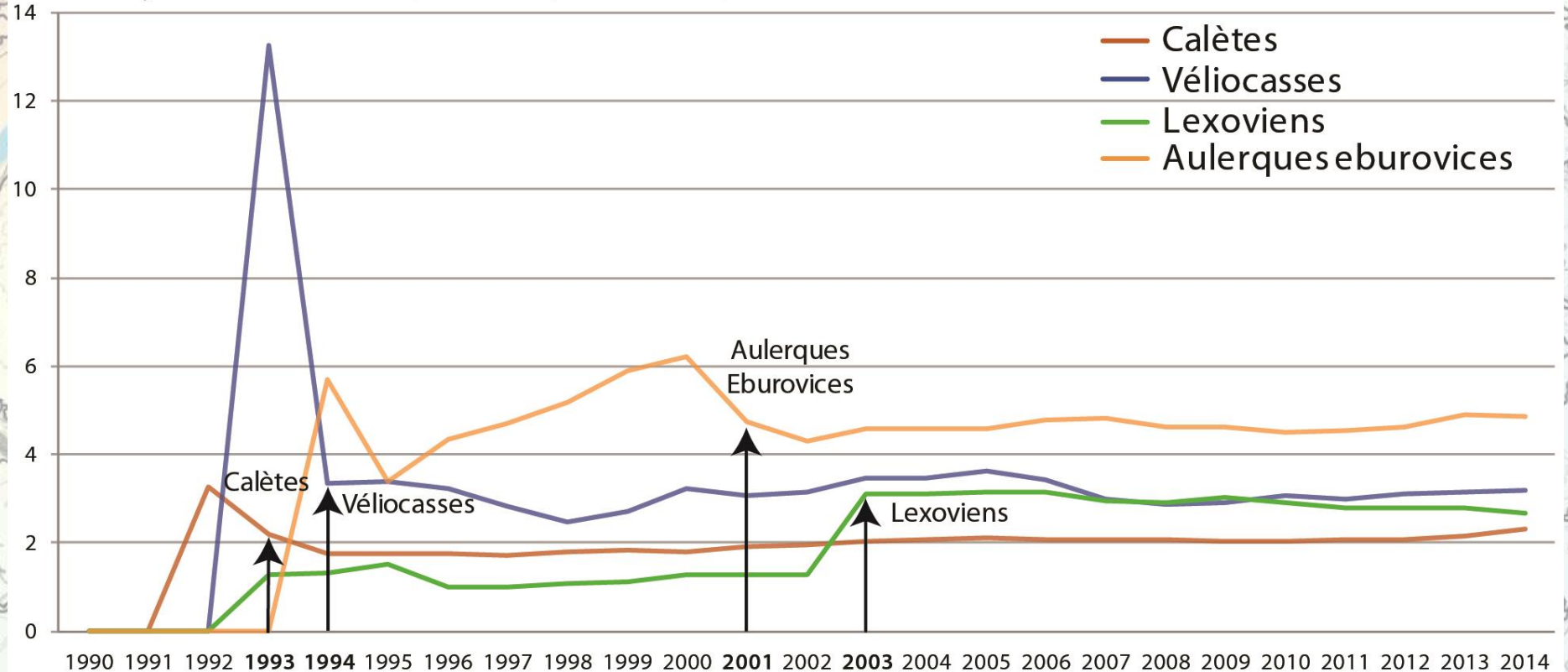
REFLECTING FUTURES



Evolution to density of settlements during Protohistoric and Roman period (J. SPIESSER)

In addition, our knowledge about the density of settlements has stabilised between the 4 different roman cities

Density of settlements (number per 10 km²)



JÉRÔME SPIESSER:

A NEW REGIONAL MIGRATION
APPROACH IN ARCHAEOLOGY

EAA 2018

BARCELONA,
5-8 SEPTEMBER

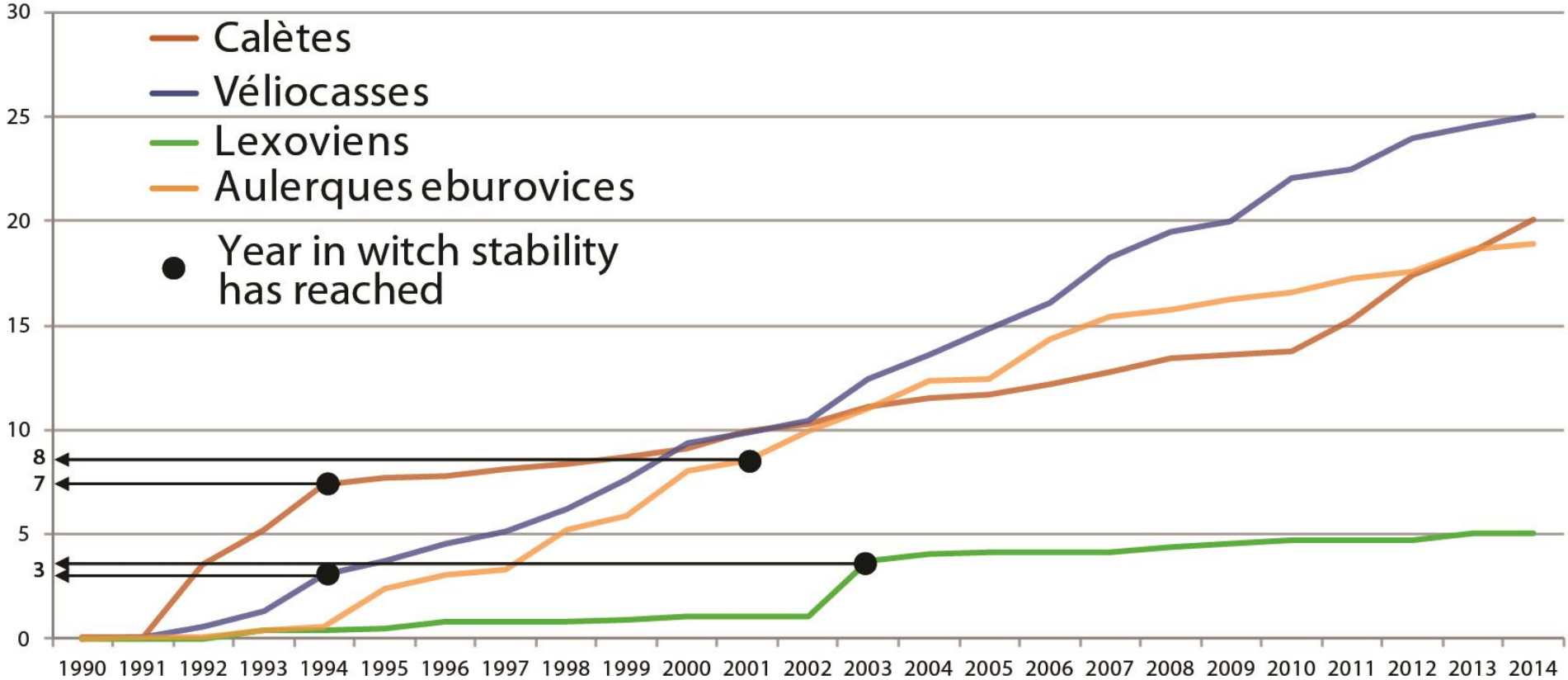
REFLECTING FUTURES



Evolution of the density of settlements between cities (J. SPIESSER)

For every 8 km² of diagnosed surface, the density of settlements stabilises

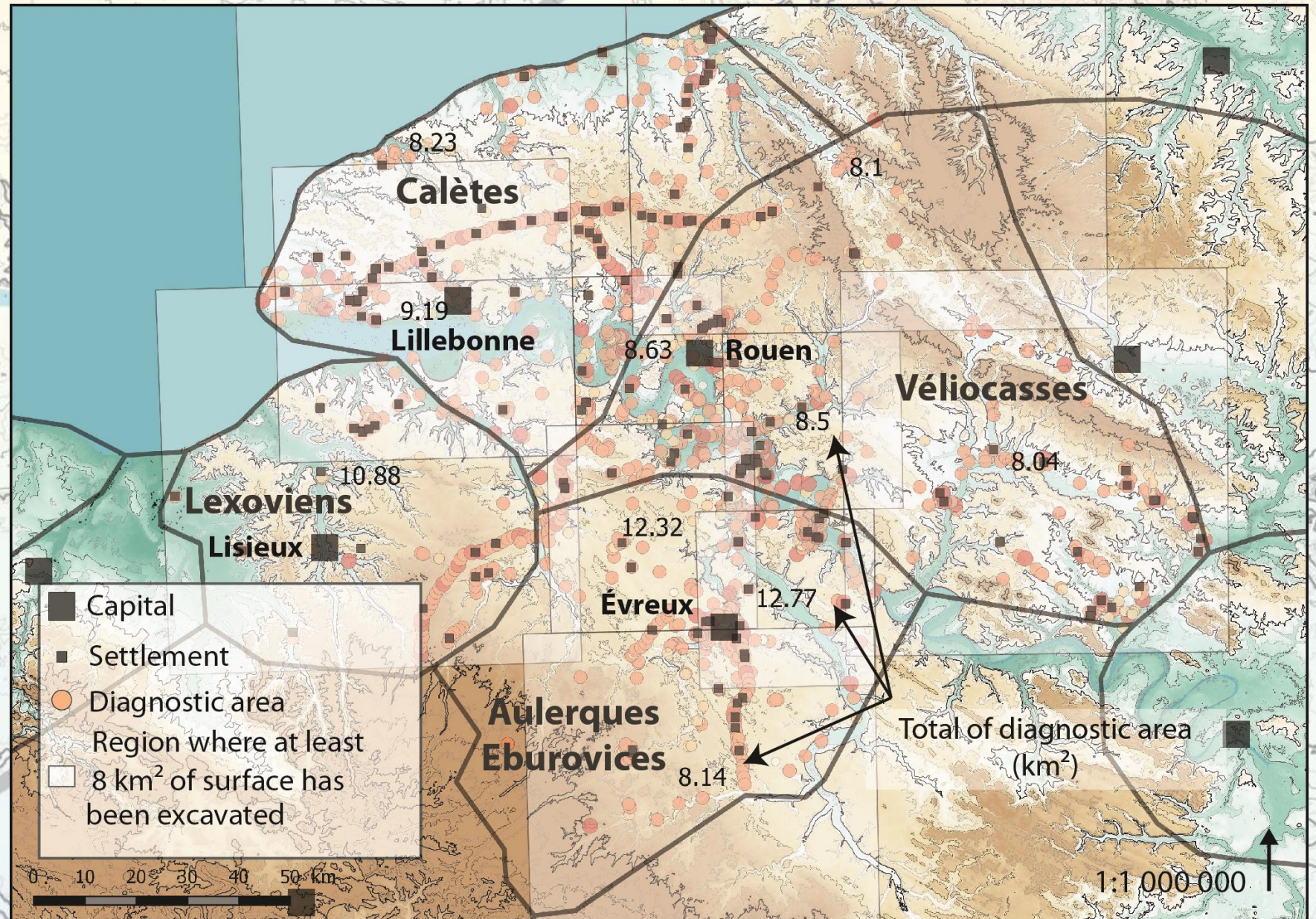
Diagnostic area (km²)



JÉRÔME SPIESSER:
A NEW REGIONAL MIGRATION
APPROACH IN ARCHAEOLOGY

(For every 8 km² of diagnosed surface, the density of settlements stabilises J. SPIESSER)

Deliniation of spaces enclosing at least 8 km² of diagnosed surface



JÉRÔME SPIESSER:

A NEW REGIONAL MIGRATION
APPROACH IN ARCHAEOLOGY

EAA 2018

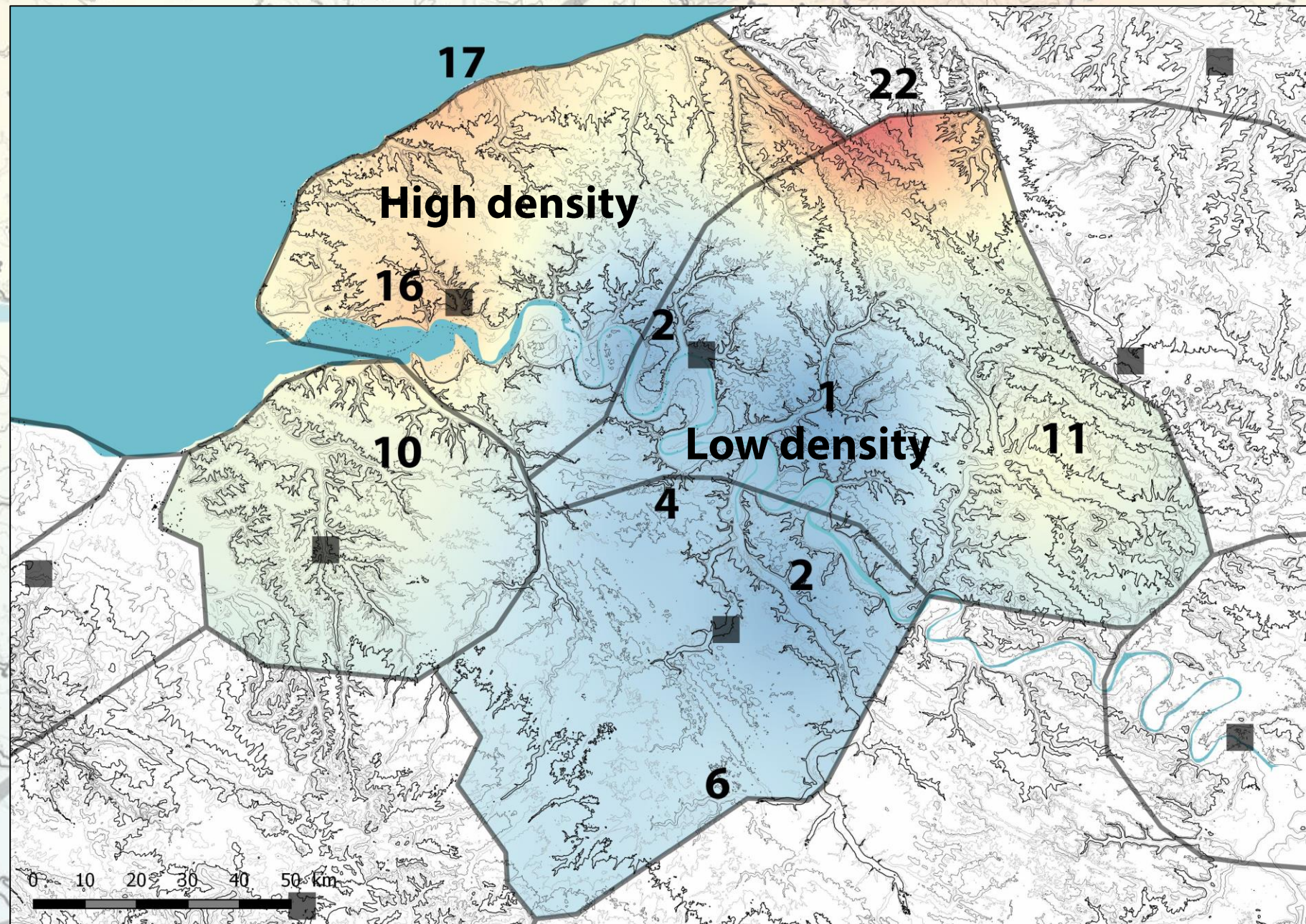
BARCELONA,
5-8 SEPTEMBER

REFLECTING FUTURES



Deliniation of spaces enclosing at least 8 km² of diagnosed surface (J. SPIESSER)

Deliniation of spaces enclosing at least 8 km² of diagnosed surface



JÉRÔME SPIESSER:

A NEW REGIONAL MIGRATION
APPROACH IN ARCHAEOLOGY

EAA 2018

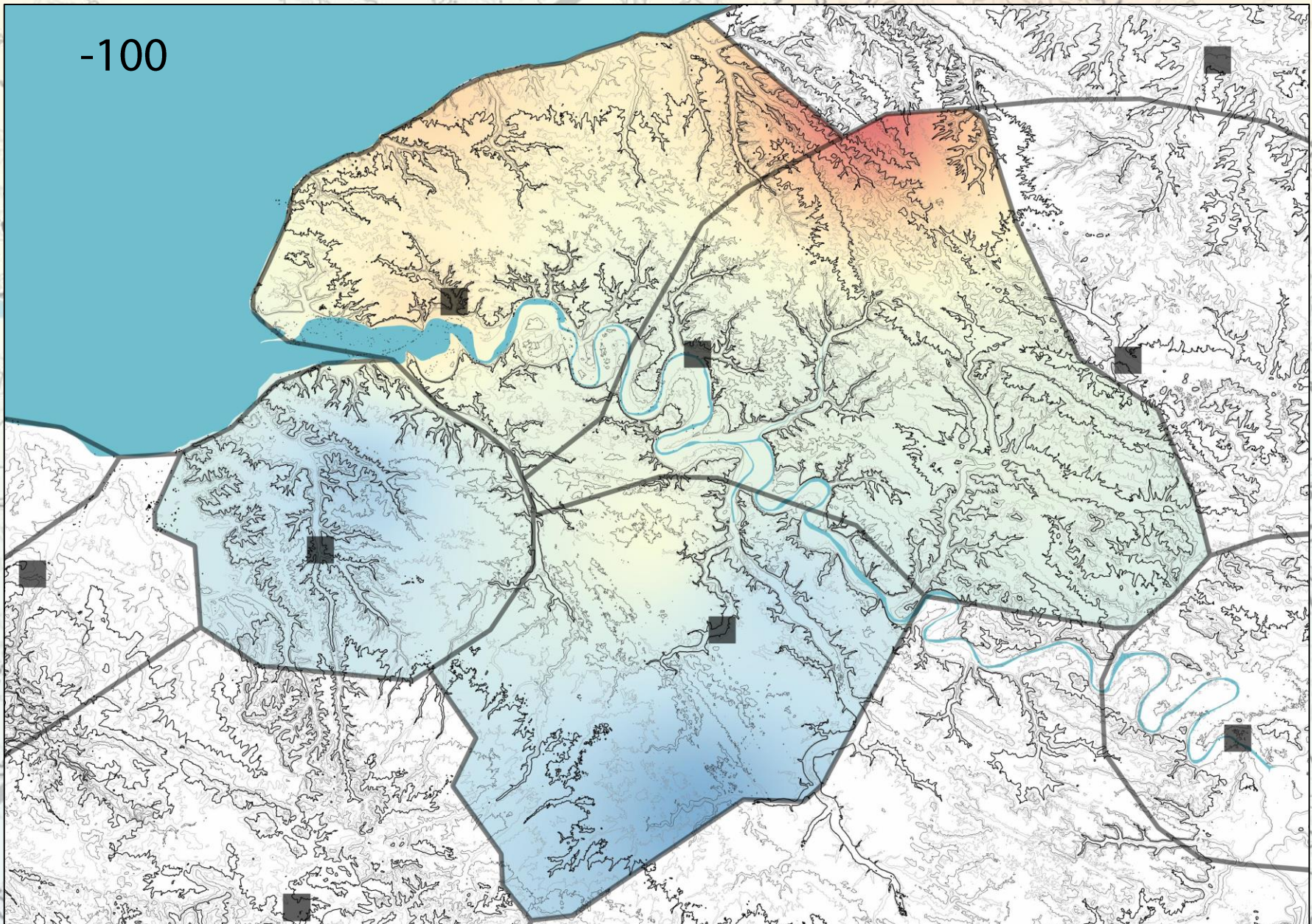
BARCELONA,
5-8 SEPTEMBER

REFLECTING FUTURES



Densities of rural settlement in 50 AC (J. SPIESSER)

Evolution of rural densities



-100

JÉRÔME SPIESSER:

A NEW REGIONAL MIGRATION
APPROACH IN ARCHAEOLOGY

EAA 2018

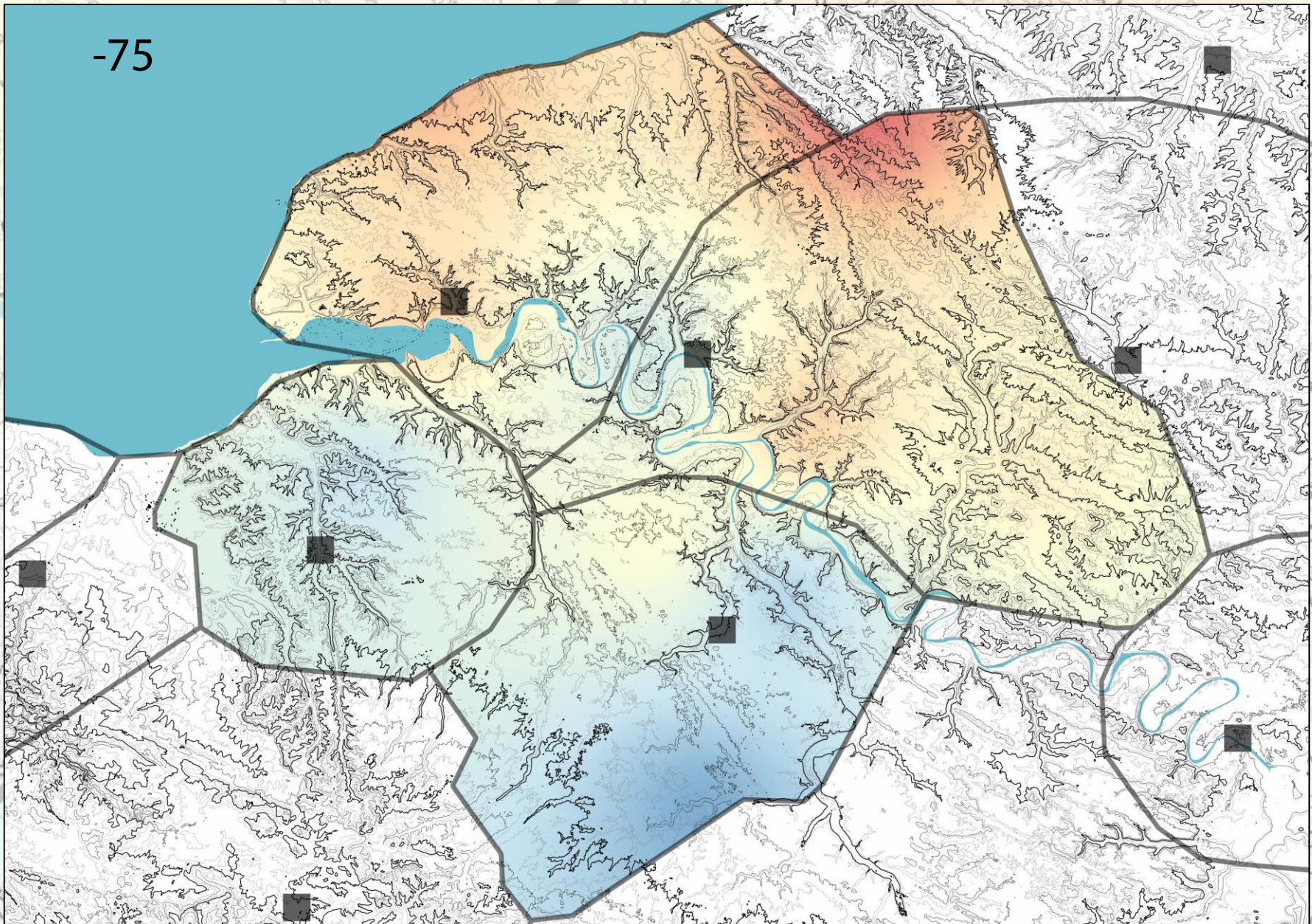
BARCELONA,
5-8 SEPTEMBER

REFLECTING FUTURES



Densities of rural settlement (J. SPIESSER)

Evolution of rural densities



-75

JÉRÔME SPIESSER:

A NEW REGIONAL MIGRATION
APPROACH IN ARCHAEOLOGY

EAA 2018

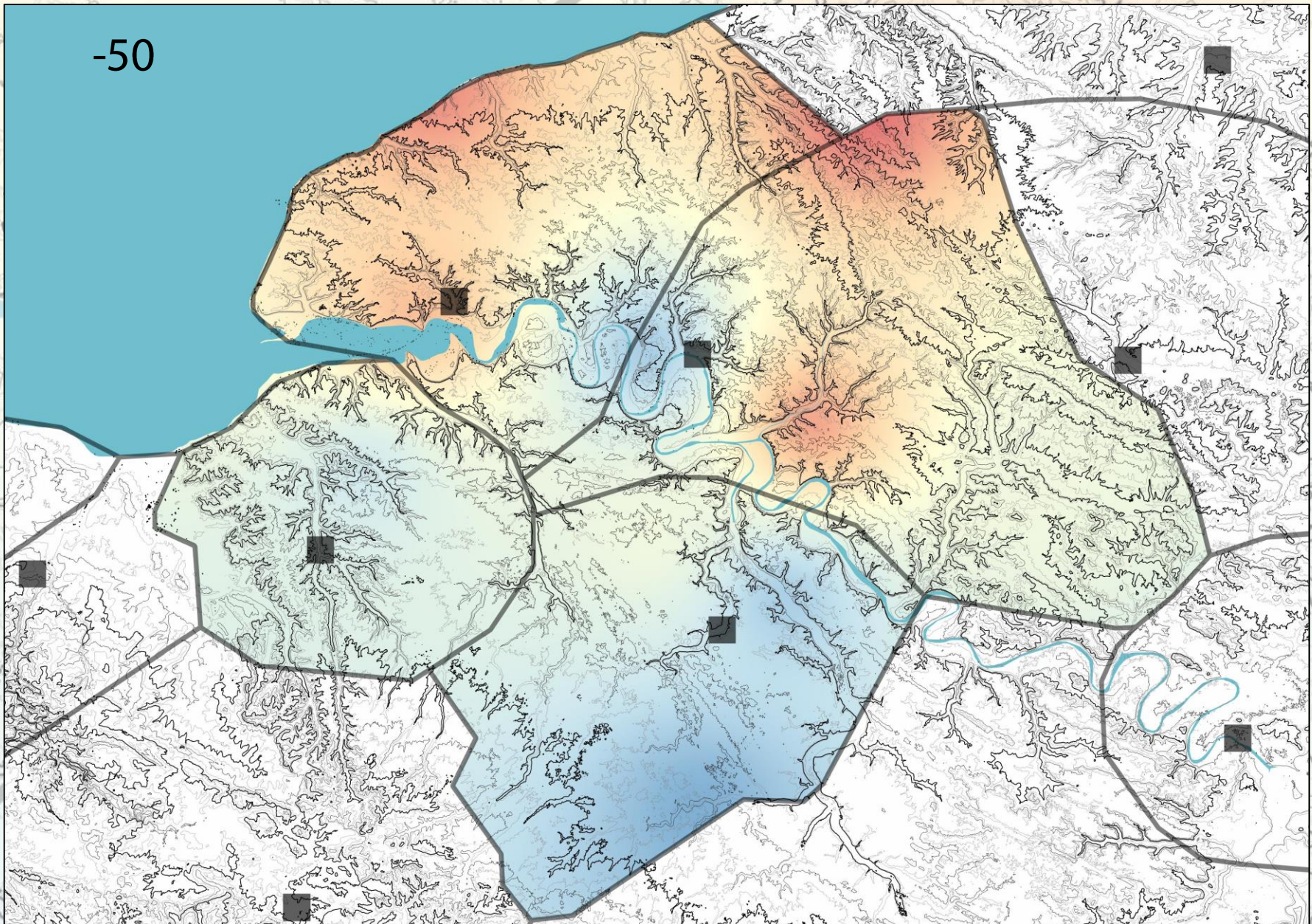
BARCELONA,
5-8 SEPTEMBER

REFLECTING FUTURES



Densities of rural settlement (J. SPIESSER)

Evolution of rural densities



JÉRÔME SPIESSER:

A NEW REGIONAL MIGRATION
APPROACH IN ARCHAEOLOGY

EAA 2018

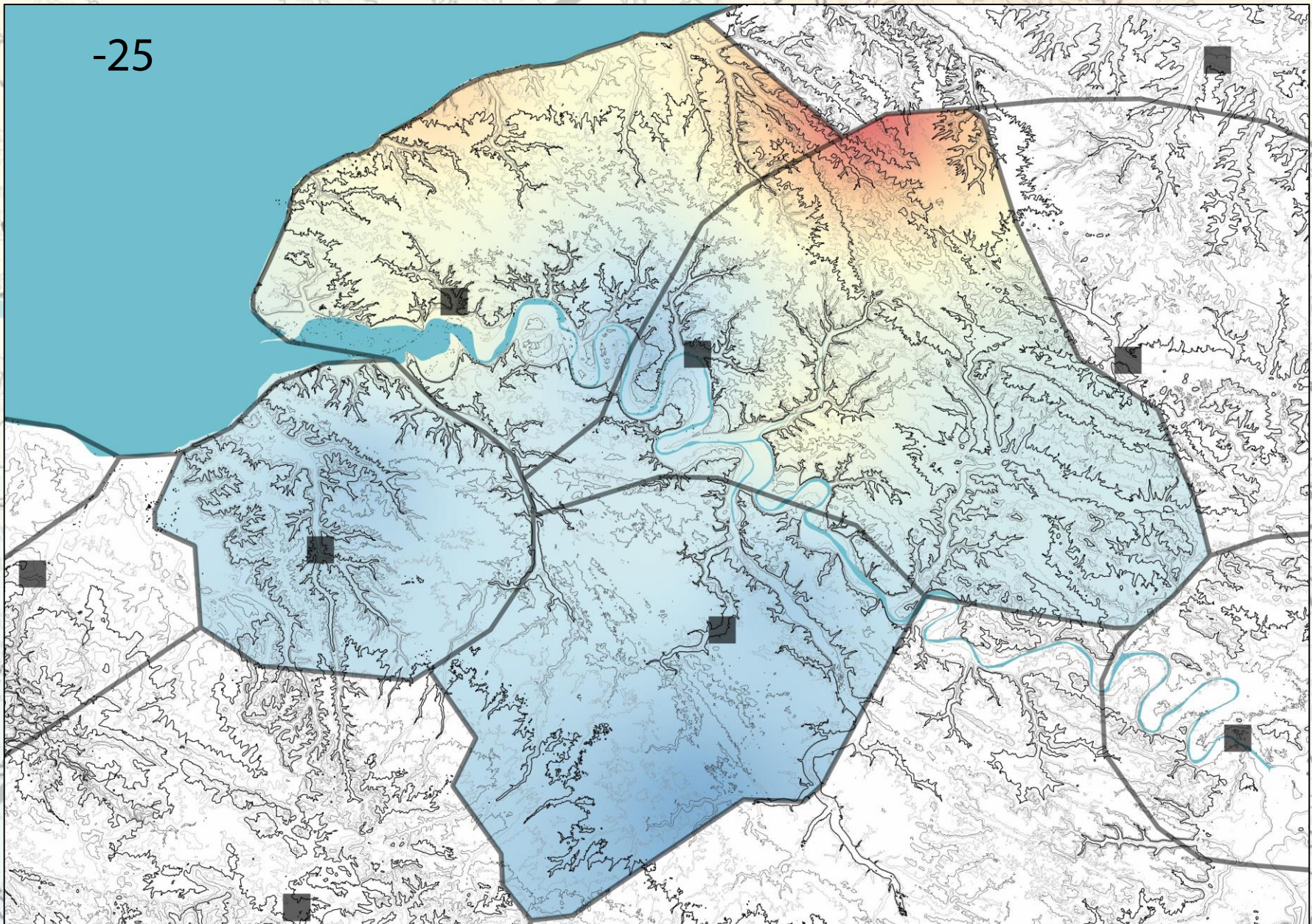
BARCELONA,
5-8 SEPTEMBER

REFLECTING FUTURES



Densities of rural settlement (J. SPIESSER)

Evolution of rural densities



JÉRÔME SPIESSER:

A NEW REGIONAL MIGRATION
APPROACH IN ARCHAEOLOGY

EAA 2018

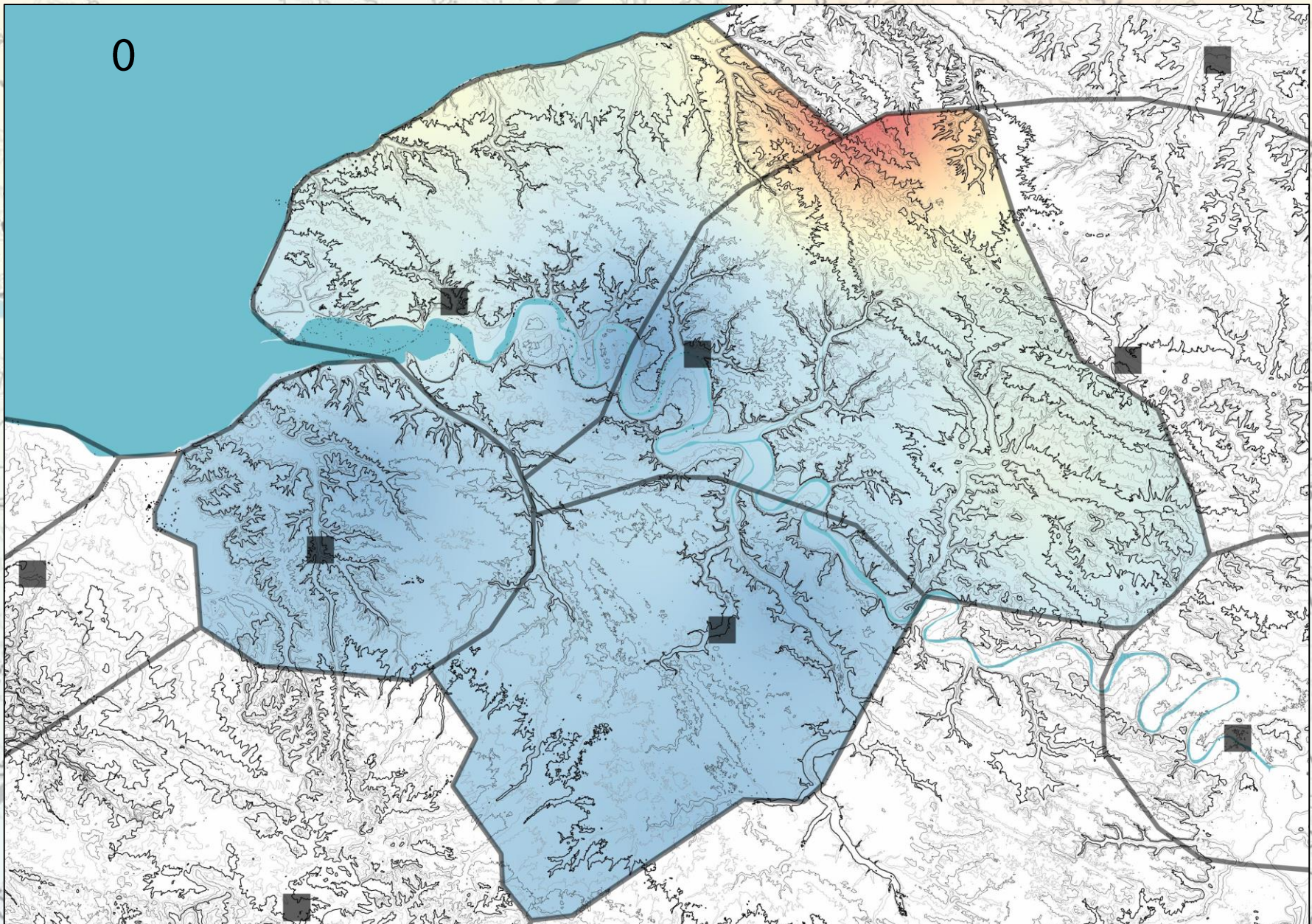
BARCELONA,
5-8 SEPTEMBER

REFLECTING FUTURES



Densities of rural settlement (J. SPIESSER)

Evolution of rural densities



JÉRÔME SPIESSER:

A NEW REGIONAL MIGRATION
APPROACH IN ARCHAEOLOGY

EAA 2018

BARCELONA,
5-8 SEPTEMBER

REFLECTING FUTURES

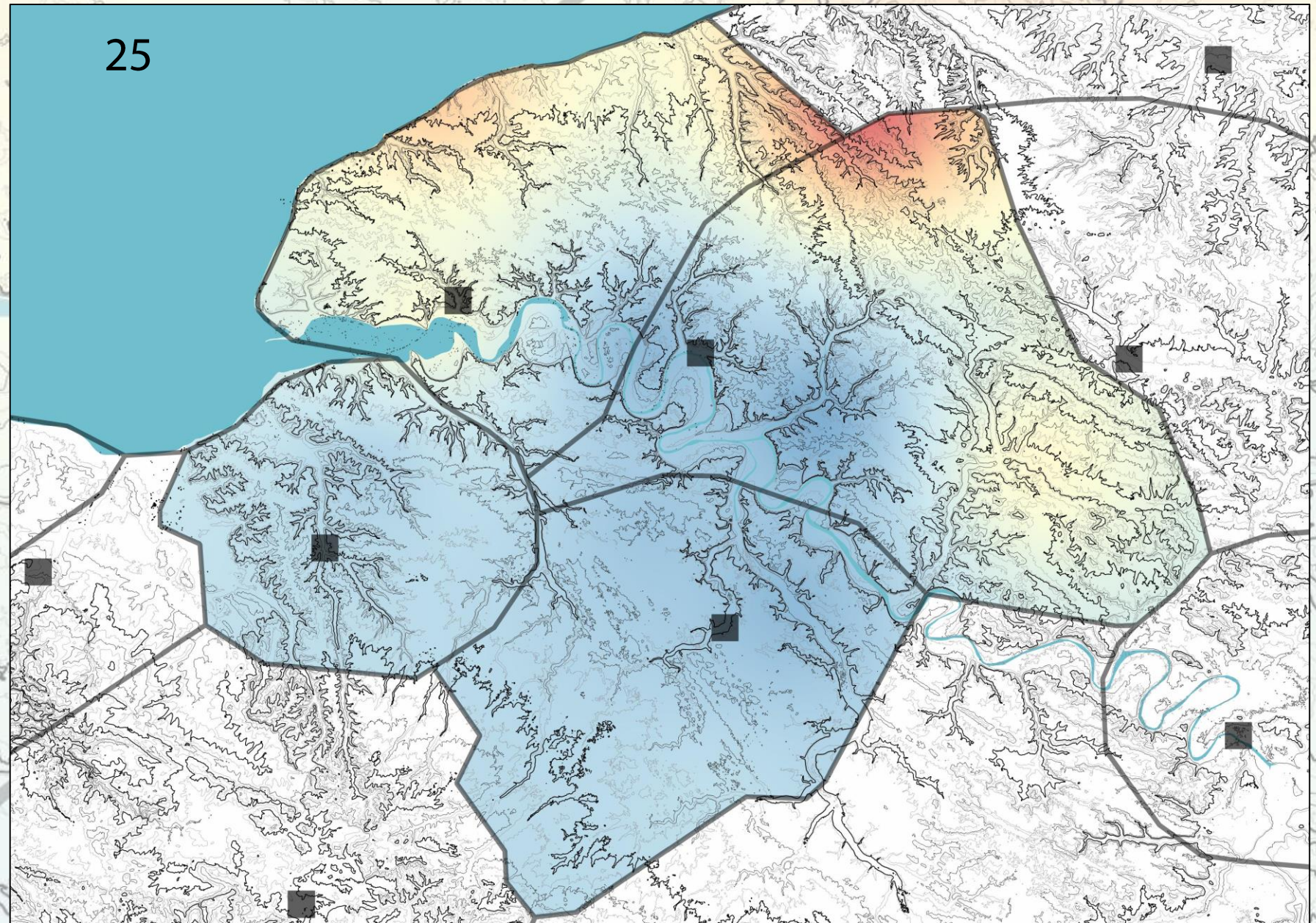


Densities of rural settlement (J. SPIESSER)

Evolution of rural densities



25



JÉRÔME SPIESSER:

A NEW REGIONAL MIGRATION
APPROACH IN ARCHAEOLOGY

EAA 2018

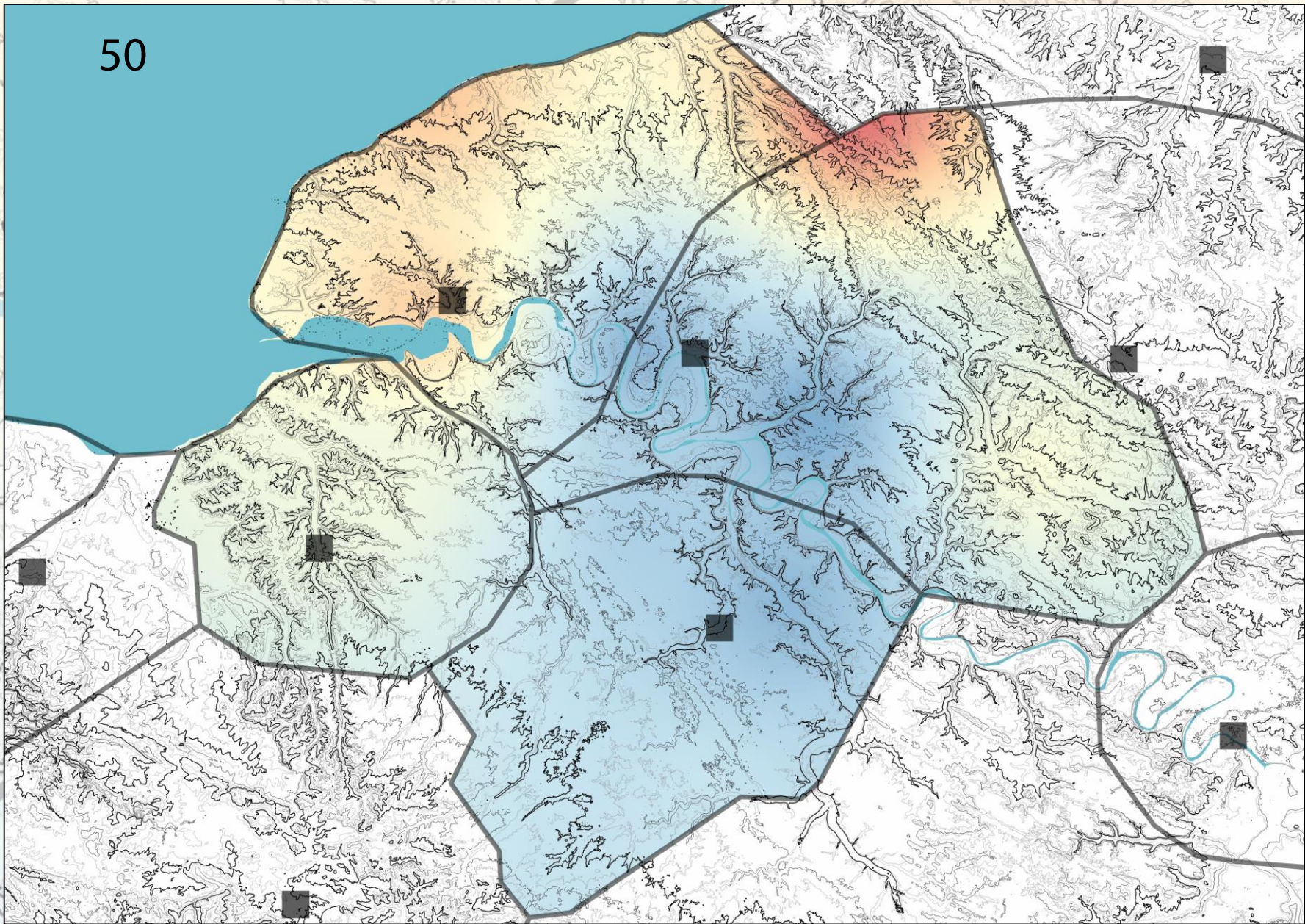
BARCELONA,
5-8 SEPTEMBER

REFLECTING FUTURES



Densities of rural settlement (J. SPIESSER)

Evolution of rural densities



50

JÉRÔME SPIESSER:

A NEW REGIONAL MIGRATION
APPROACH IN ARCHAEOLOGY

EAA 2018

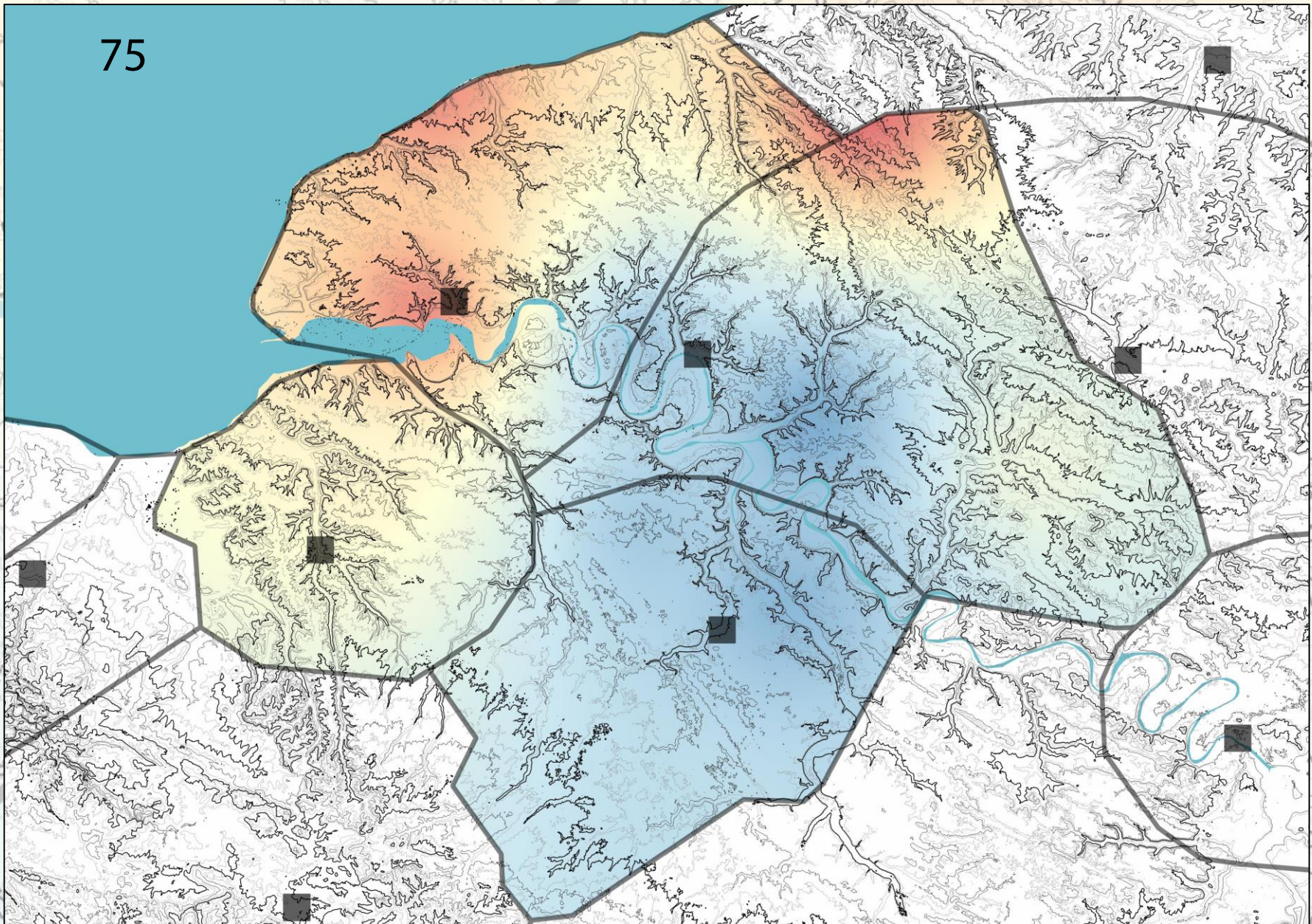
BARCELONA,
5-8 SEPTEMBER

REFLECTING FUTURES



Densities of rural settlement (J. SPIESSER)

Evolution of rural densities



JÉRÔME SPIESSER:

A NEW REGIONAL MIGRATION
APPROACH IN ARCHAEOLOGY

EAA 2018

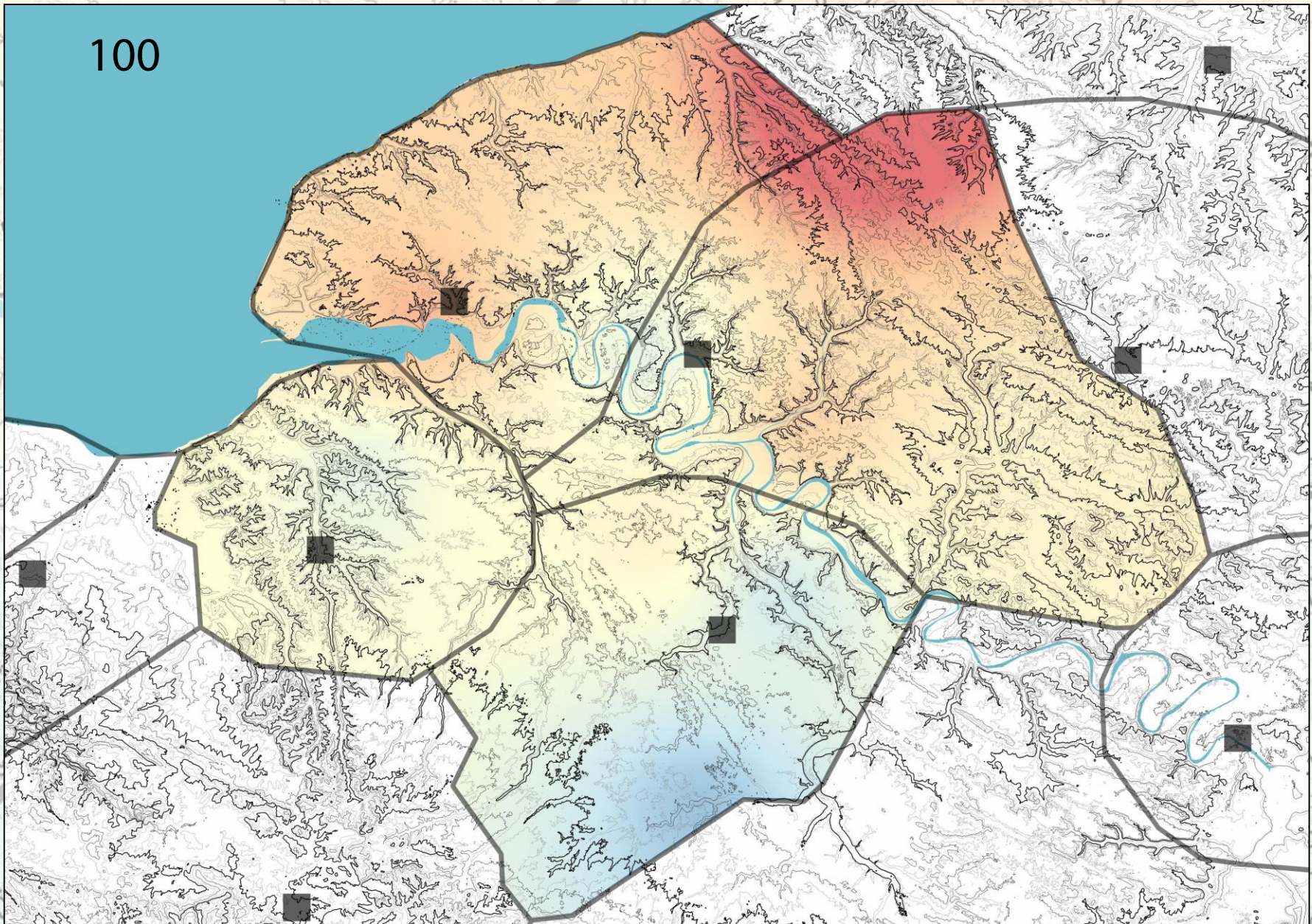
BARCELONA,
5-8 SEPTEMBER

REFLECTING FUTURES



Densities of rural settlement (J. SPIESSER)

Evolution of rural densities



JÉRÔME SPIESSER:

A NEW REGIONAL MIGRATION
APPROACH IN ARCHAEOLOGY

EAA 2018

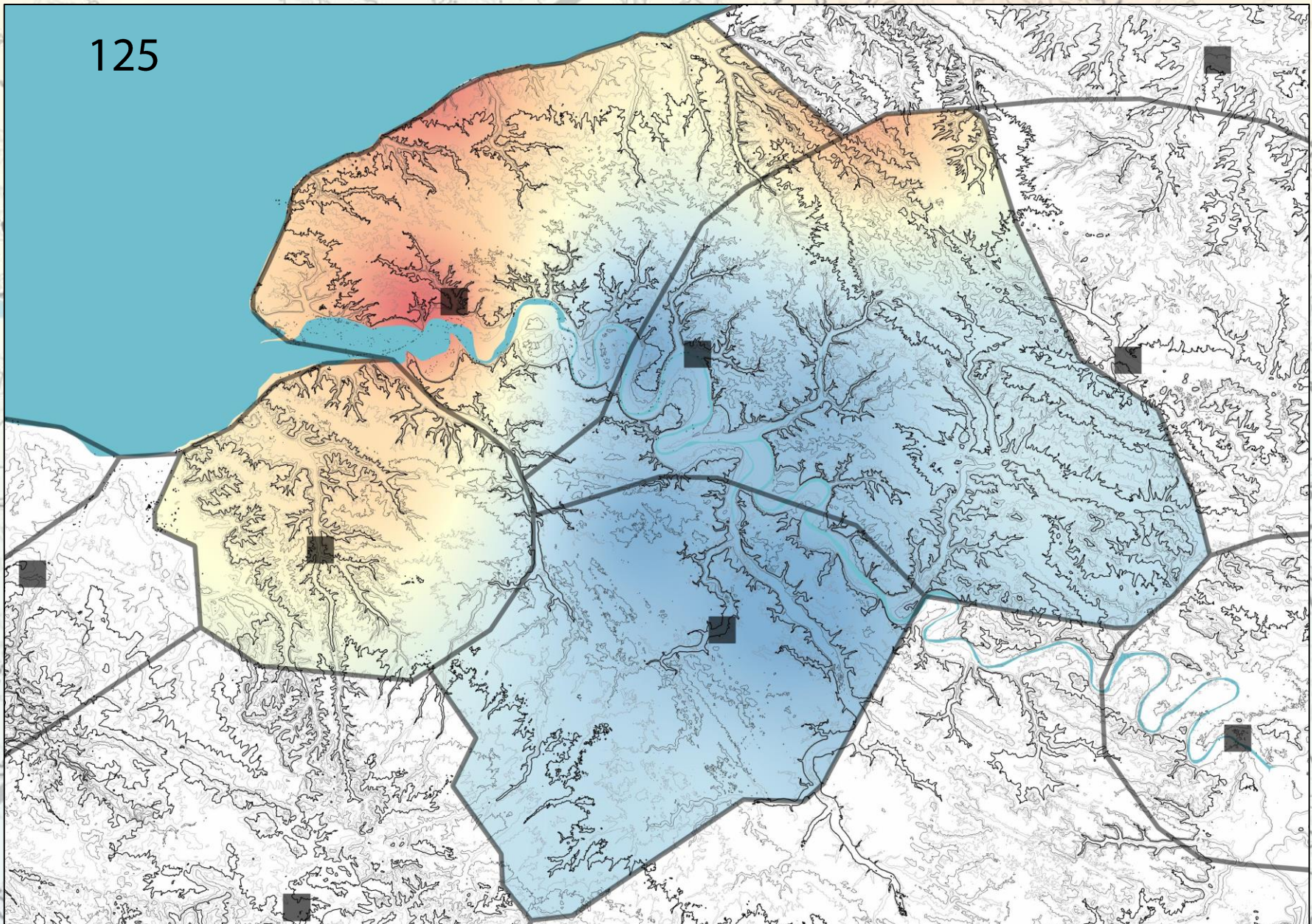
BARCELONA,
5-8 SEPTEMBER

REFLECTING FUTURES



Densities of rural settlement (J. SPIESSER)

Evolution of rural densities



125

JÉRÔME SPIESSER:

A NEW REGIONAL MIGRATION
APPROACH IN ARCHAEOLOGY

EAA 2018

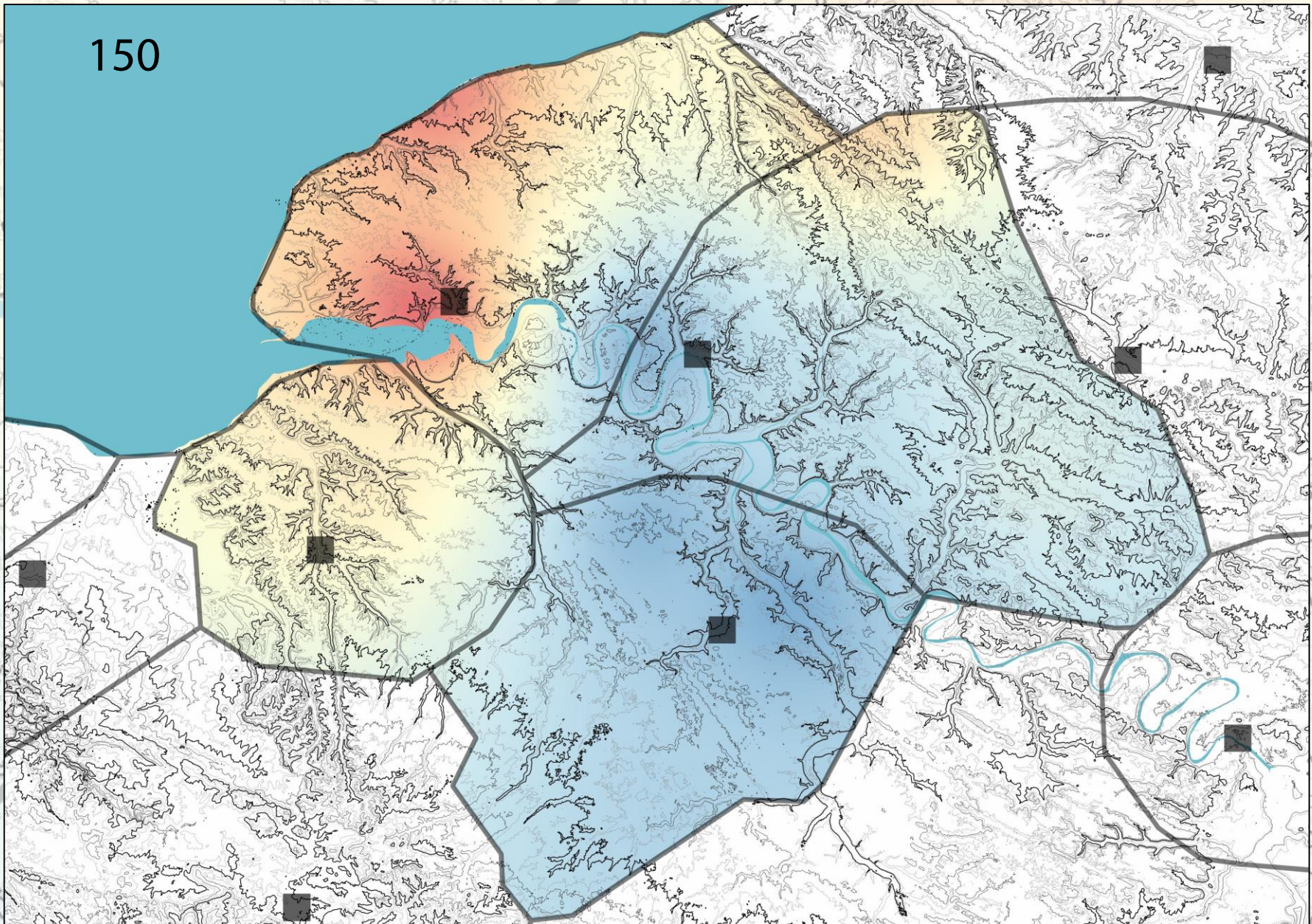
BARCELONA,
5-8 SEPTEMBER

REFLECTING FUTURES



Densities of rural settlement (J. SPIESSER)

Evolution of rural densities



JÉRÔME SPIESSER:

A NEW REGIONAL MIGRATION
APPROACH IN ARCHAEOLOGY

EAA 2018

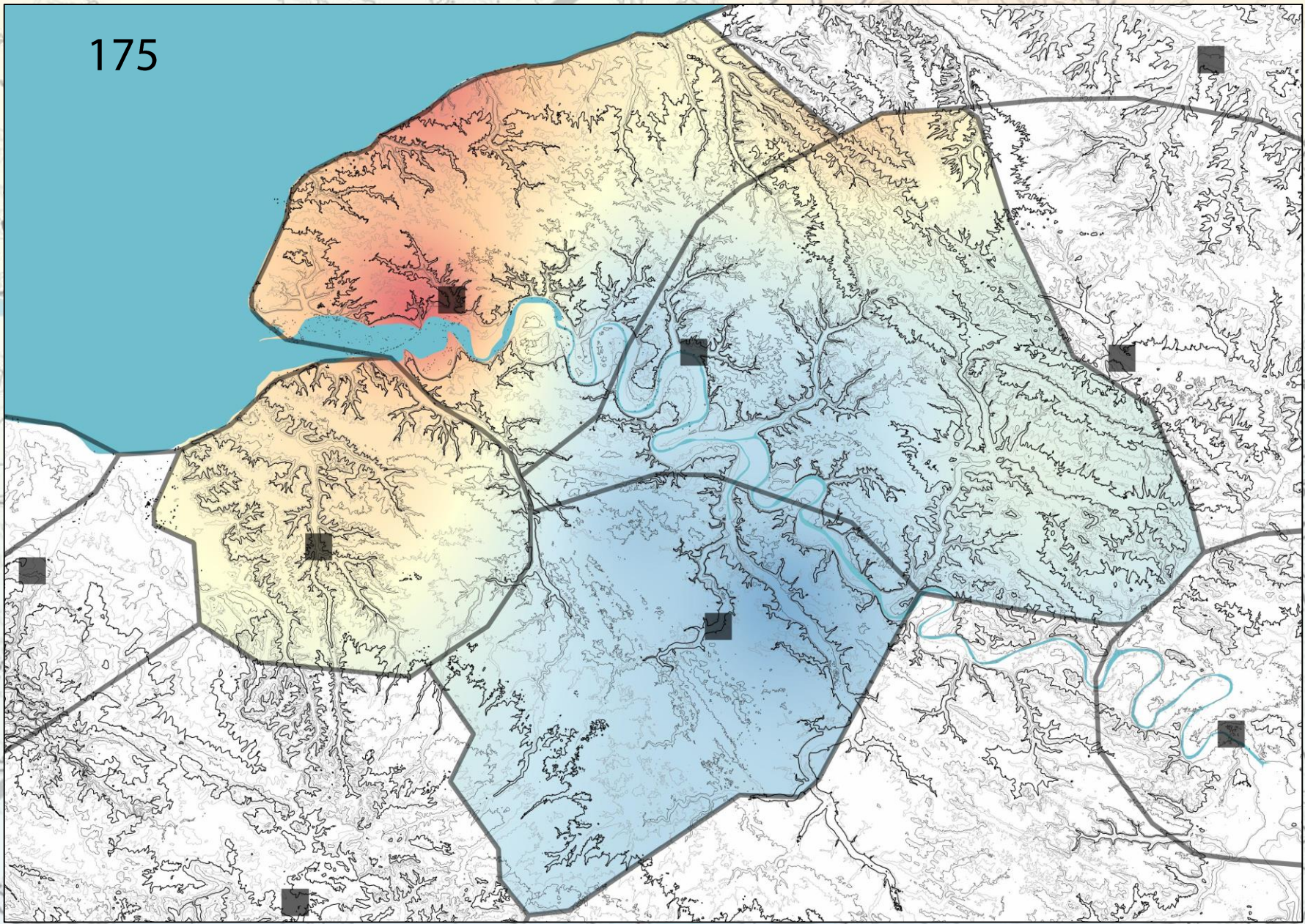
BARCELONA,
5-8 SEPTEMBER

REFLECTING FUTURES



Densities of rural settlement (J. SPIESSER)

Evolution of rural densities

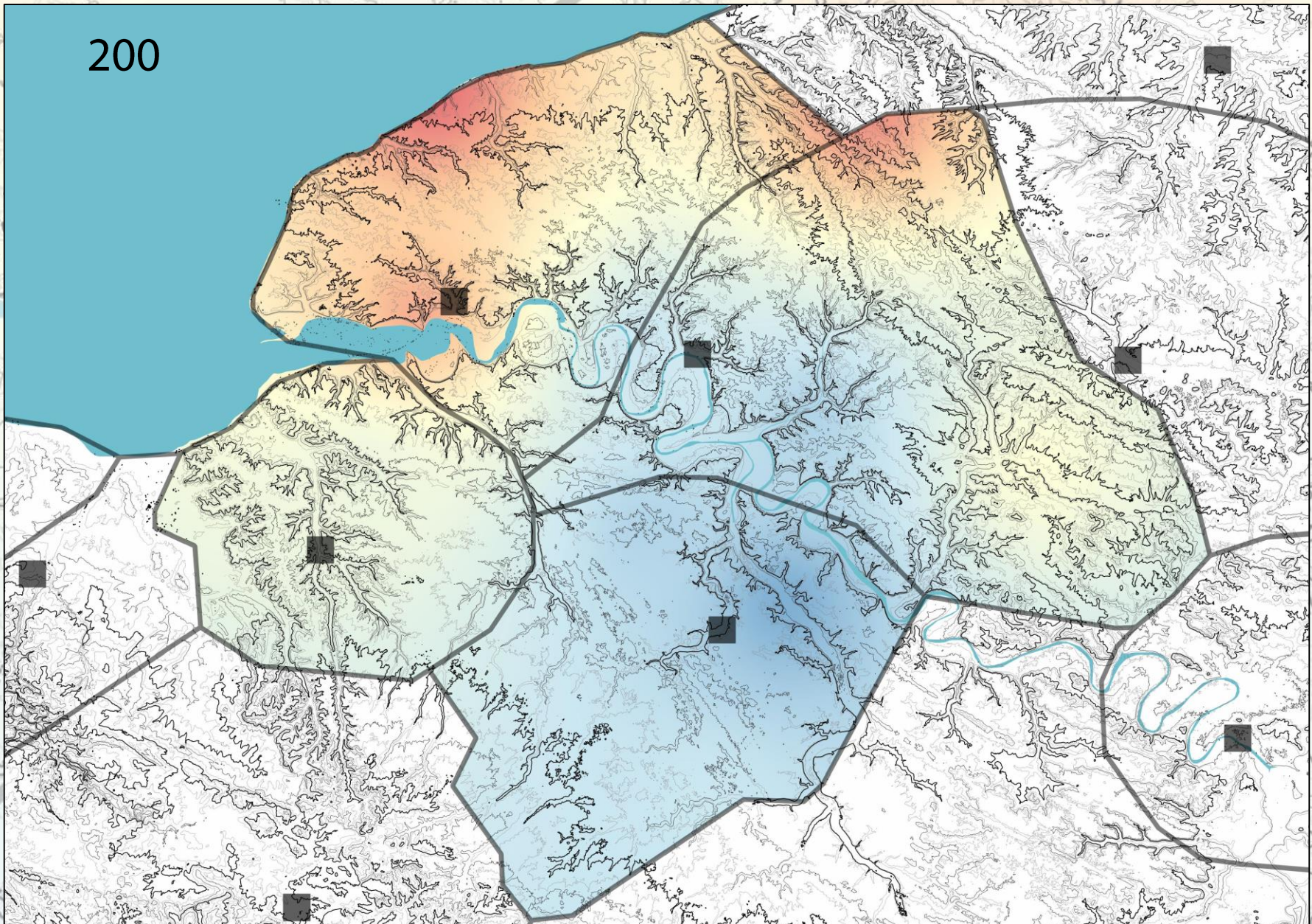


175

JÉRÔME SPIESSER:
A NEW REGIONAL MIGRATION
APPROACH IN ARCHAEOLOGY

Densities of rural settlement (J. SPIESSER)

Evolution of rural densities



JÉRÔME SPIESSER:

A NEW REGIONAL MIGRATION
APPROACH IN ARCHAEOLOGY

EAA 2018

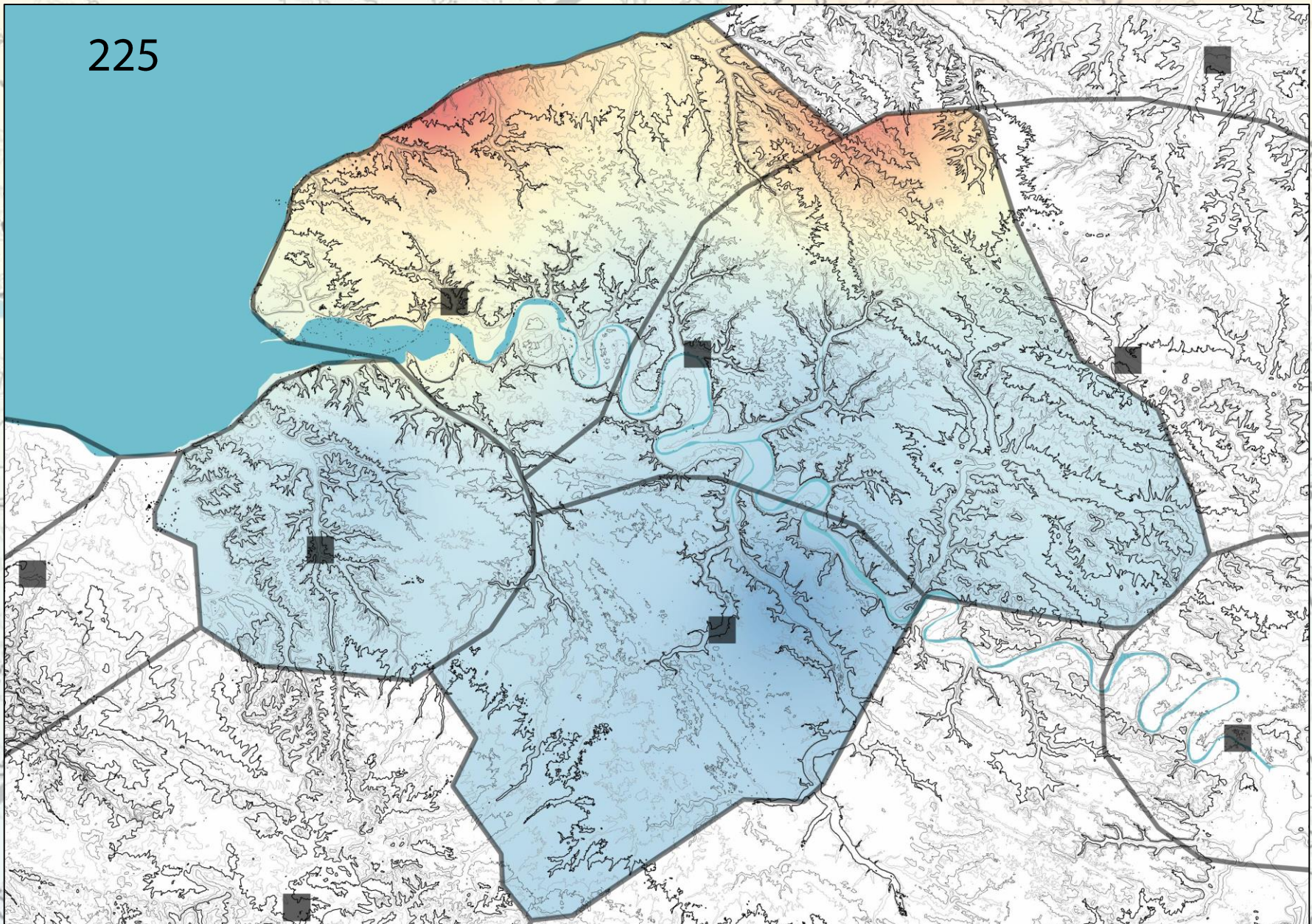
BARCELONA,
5-8 SEPTEMBER

REFLECTING FUTURES



Densities of rural settlement (J. SPIESSER)

Evolution of rural densities



225

JÉRÔME SPIESSER:

A NEW REGIONAL MIGRATION
APPROACH IN ARCHAEOLOGY

EAA 2018

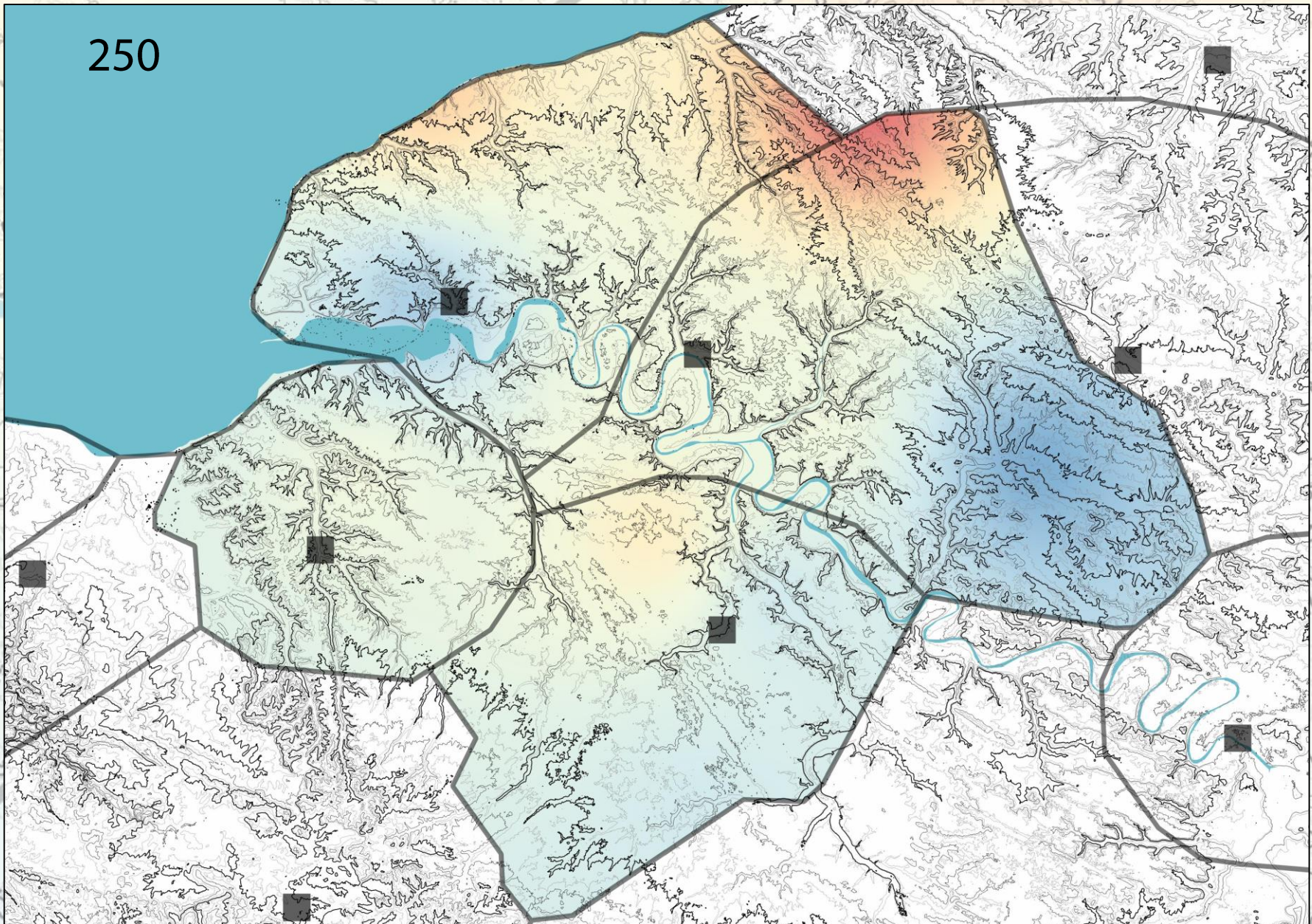
BARCELONA,
5-8 SEPTEMBER

REFLECTING FUTURES



Densities of rural settlement (J. SPIESSER)

Evolution of rural densities



JÉRÔME SPIESSER:

A NEW REGIONAL MIGRATION
APPROACH IN ARCHAEOLOGY

EAA 2018

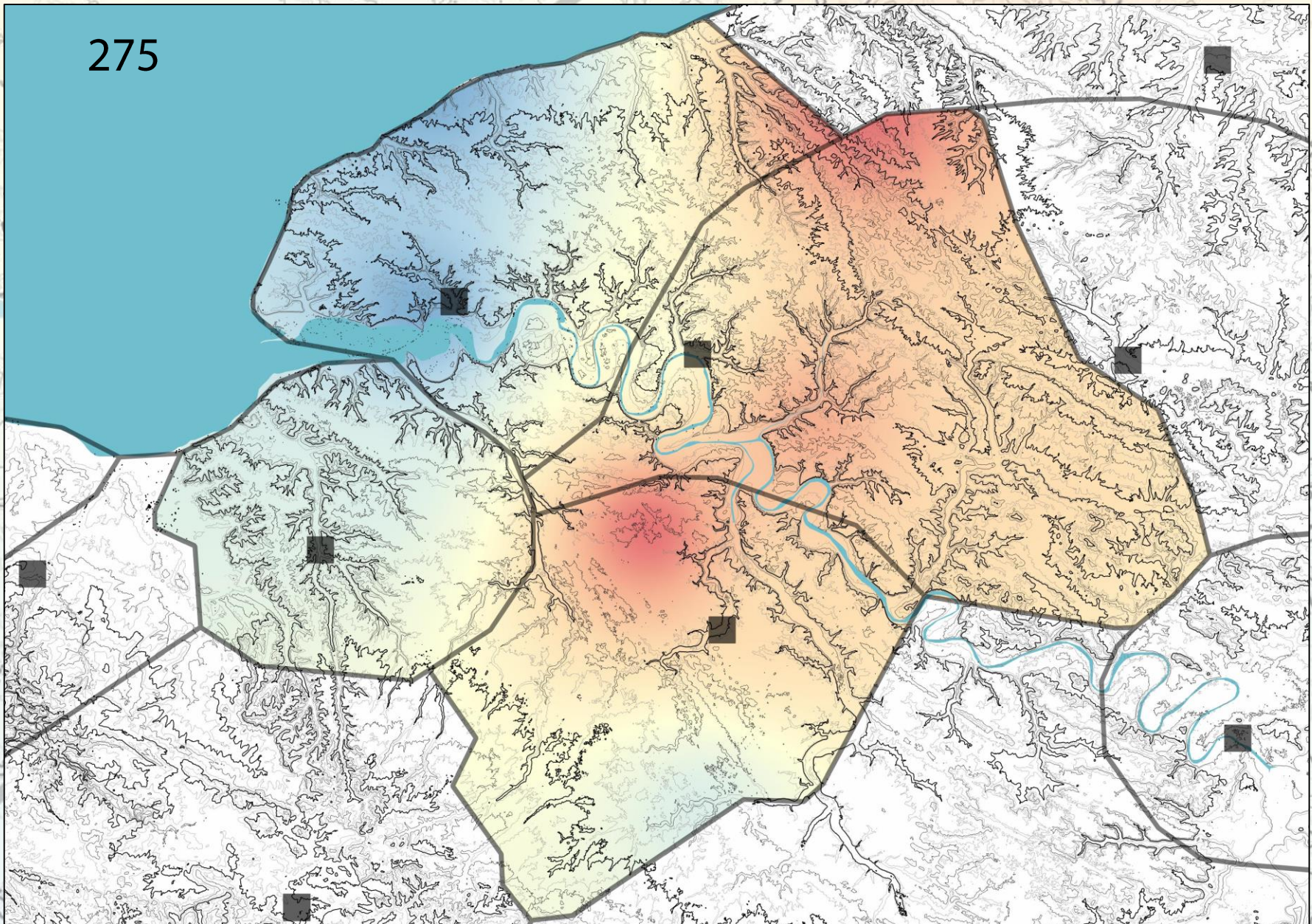
BARCELONA,
5-8 SEPTEMBER

REFLECTING FUTURES



Densities of rural settlement (J. SPIESSER)

Evolution of rural densities



275

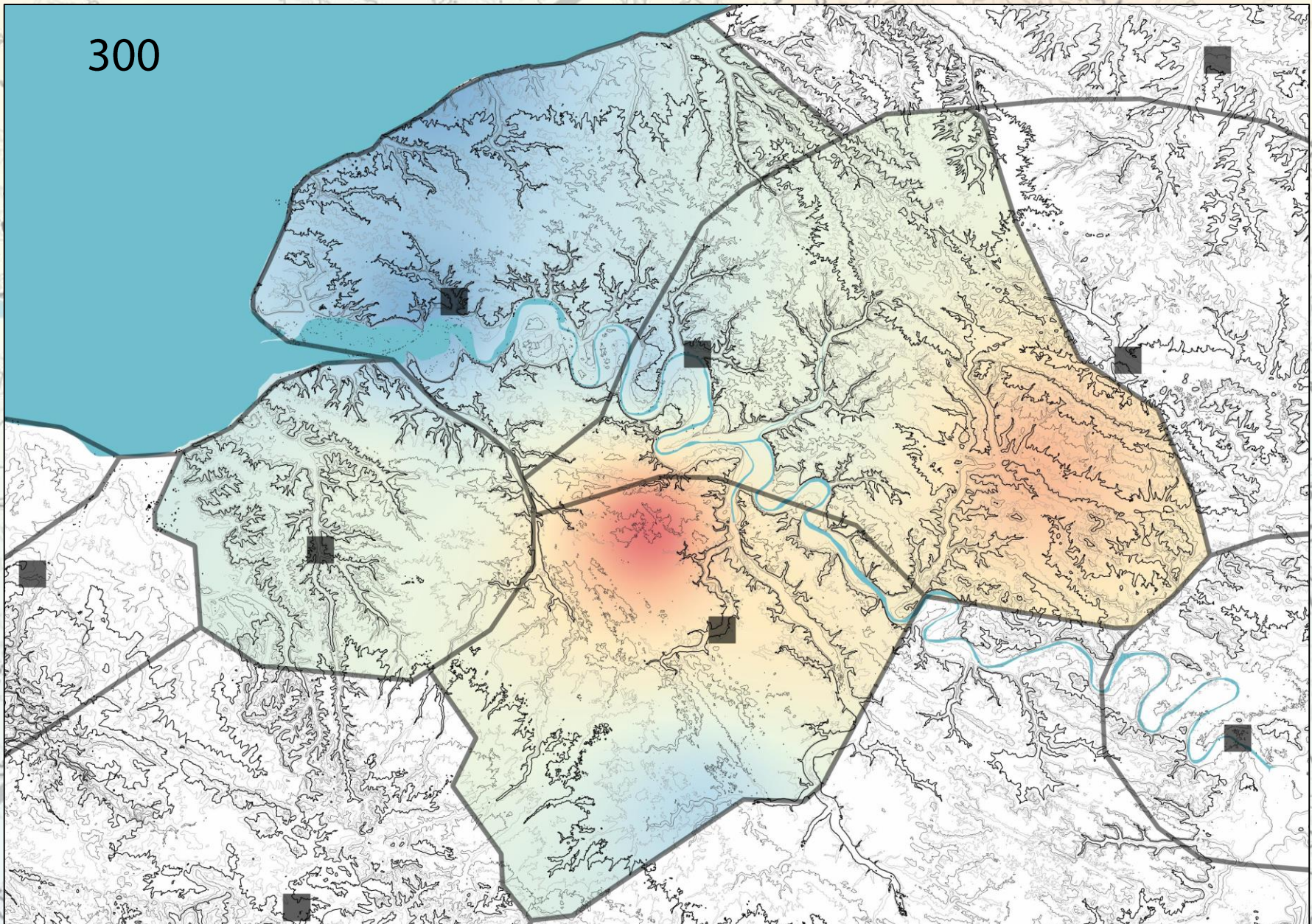
JÉRÔME SPIESSER:
A NEW REGIONAL MIGRATION
APPROACH IN ARCHAEOLOGY

EAA 2018
BARCELONA,
5-8 SEPTEMBER
REFLECTING FUTURES



Densities of rural settlement (J. SPIESSER)

Evolution of rural densities



300

JÉRÔME SPIESSER:

A NEW REGIONAL MIGRATION
APPROACH IN ARCHAEOLOGY

EAA 2018

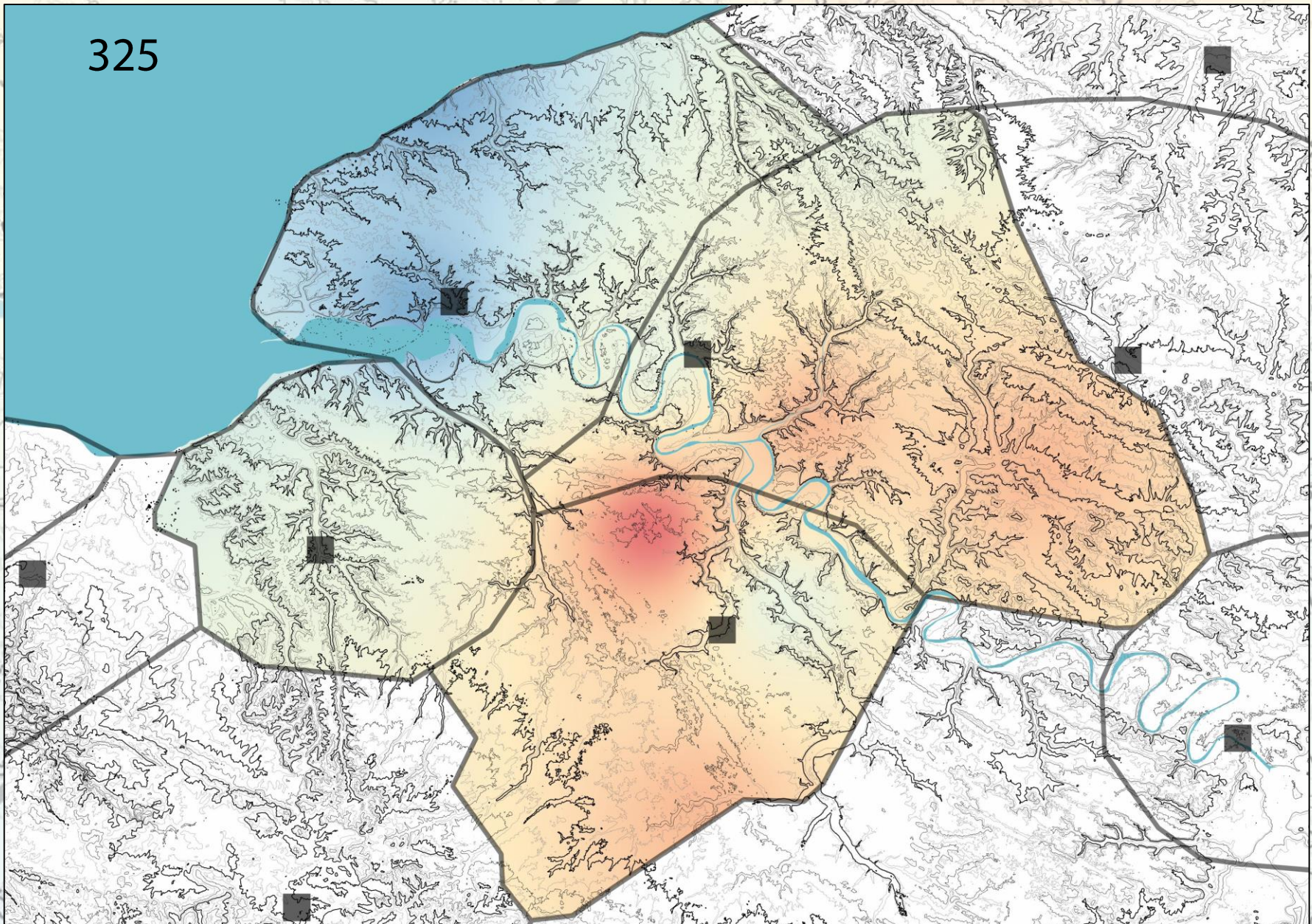
BARCELONA,
5-8 SEPTEMBER

REFLECTING FUTURES



Densities of rural settlement (J. SPIESSER)

Evolution of rural densities



325

JÉRÔME SPIESSER:

A NEW REGIONAL MIGRATION
APPROACH IN ARCHAEOLOGY

EAA 2018

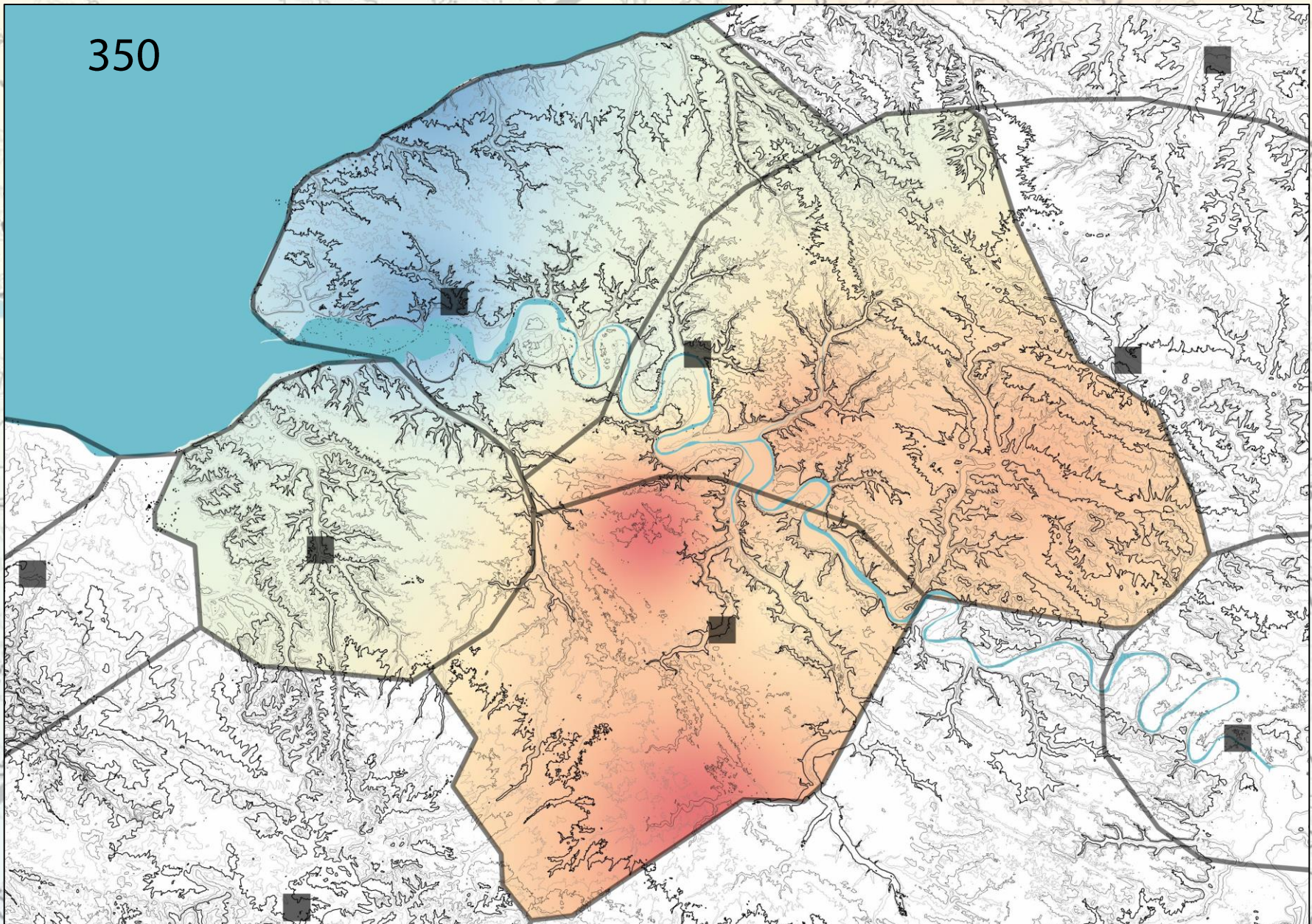
BARCELONA,
5-8 SEPTEMBER

REFLECTING FUTURES



Densities of rural settlement (J. SPIESSER)

Evolution of rural densities



350

JÉRÔME SPIESSER:
A NEW REGIONAL MIGRATION
APPROACH IN ARCHAEOLOGY

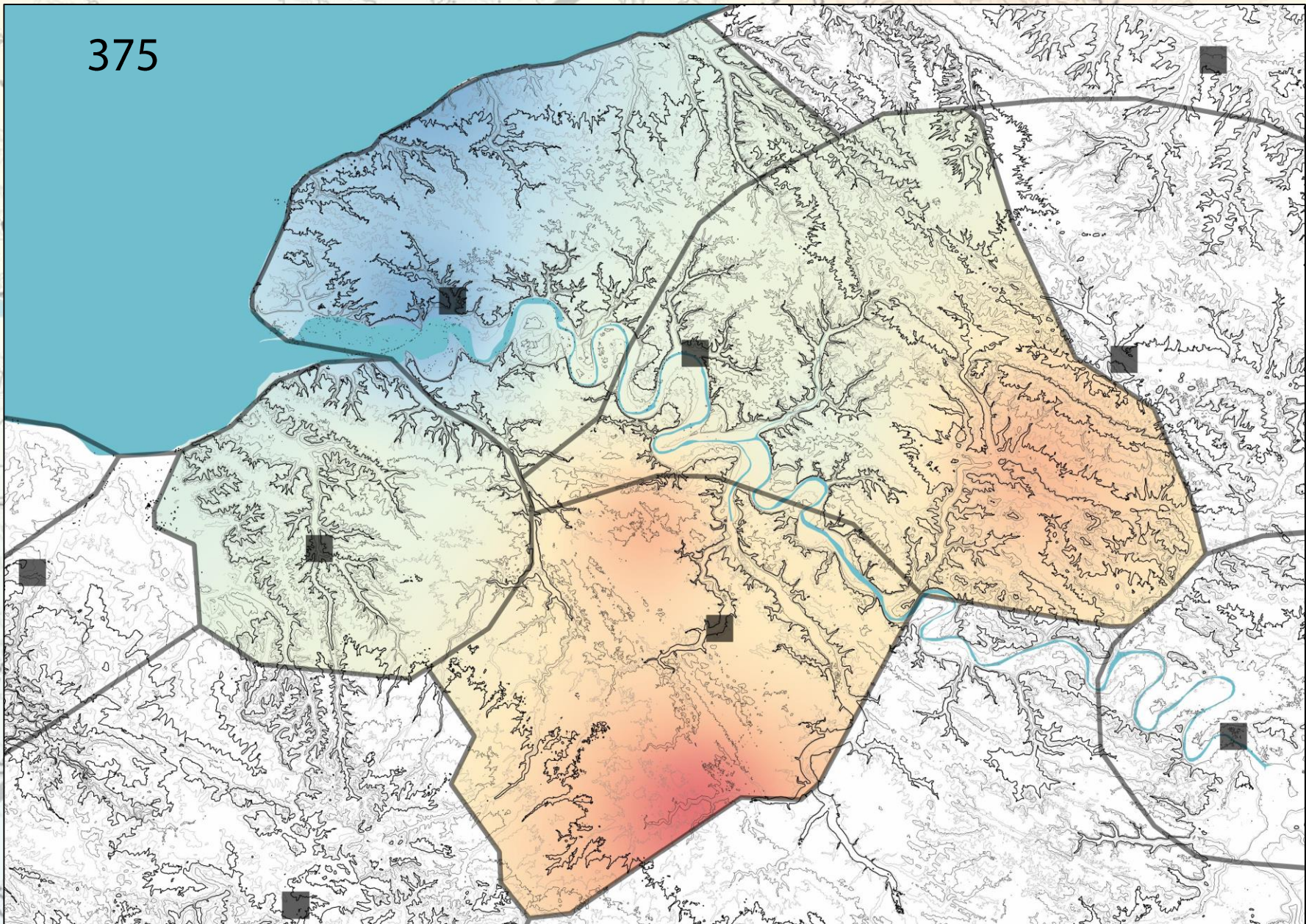
EAA 2018
BARCELONA,
5-8 SEPTEMBER
REFLECTING FUTURES

Densities of rural settlement (J. SPIESSER)

Evolution of rural densities



375



JÉRÔME SPIESSER:

A NEW REGIONAL MIGRATION
APPROACH IN ARCHAEOLOGY

EAA 2018

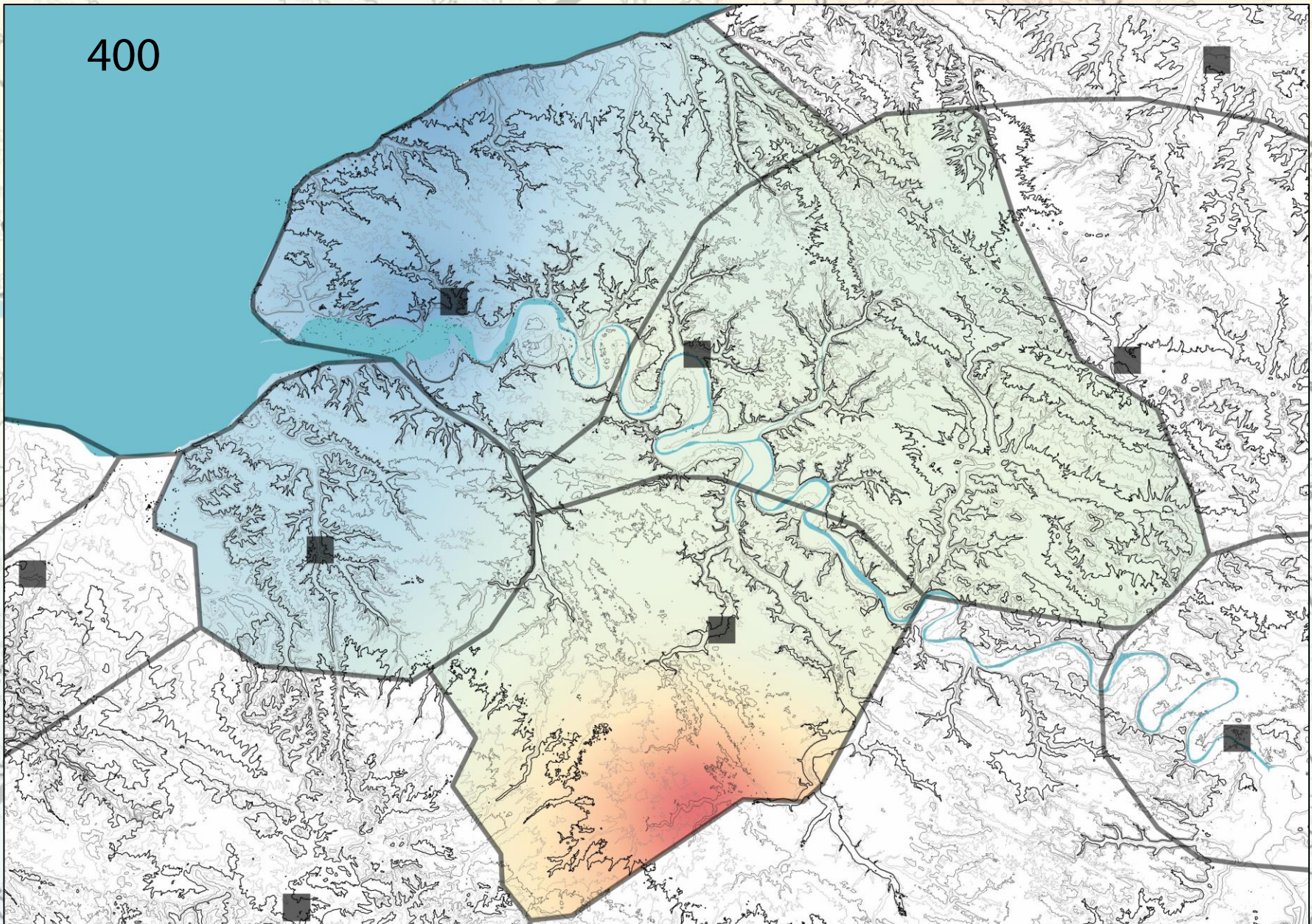
BARCELONA,
5-8 SEPTEMBER

REFLECTING FUTURES



Densities of rural settlement (J. SPIESSER)

Evolution of rural densities



400

JÉRÔME SPIESSER:

A NEW REGIONAL MIGRATION
APPROACH IN ARCHAEOLOGY

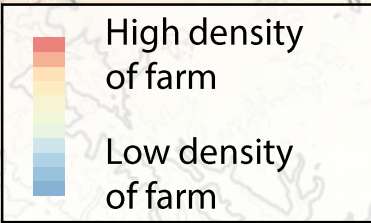
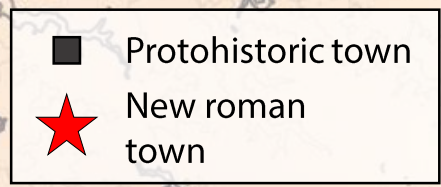
EAA 2018

BARCELONA,
5-8 SEPTEMBER

REFLECTING FUTURES



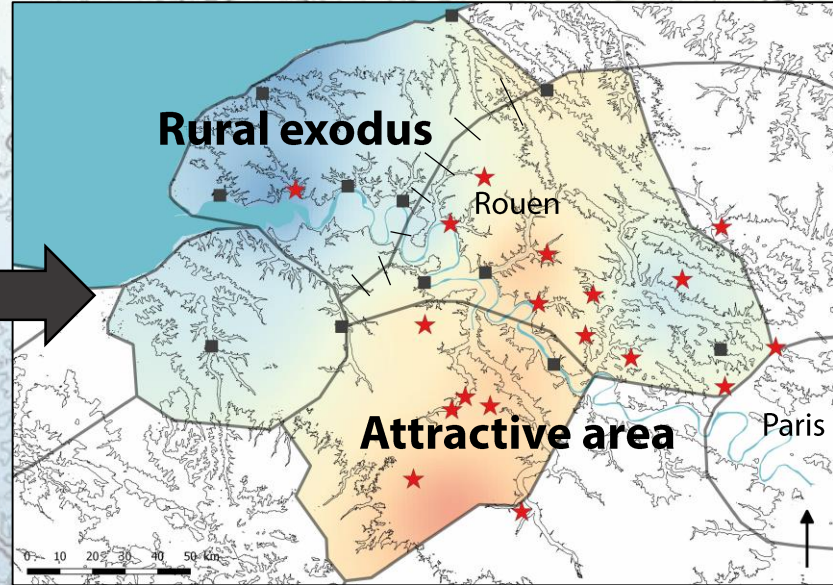
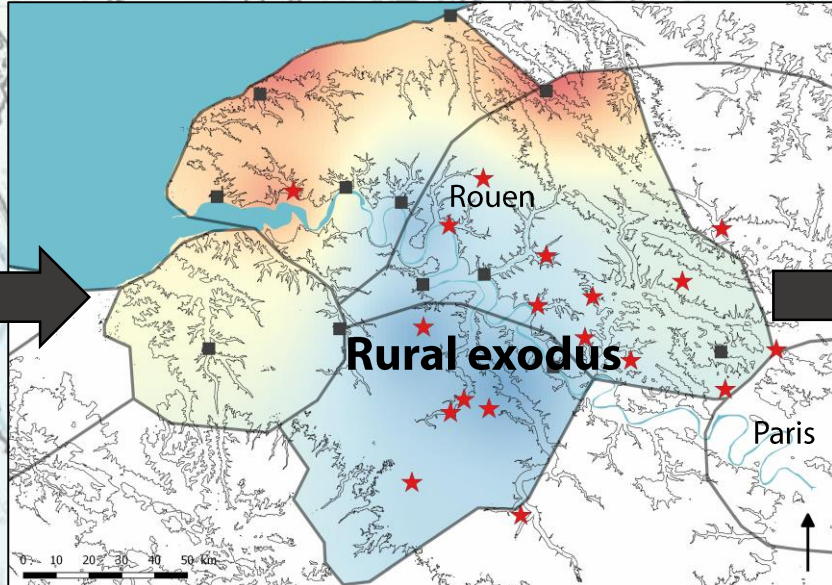
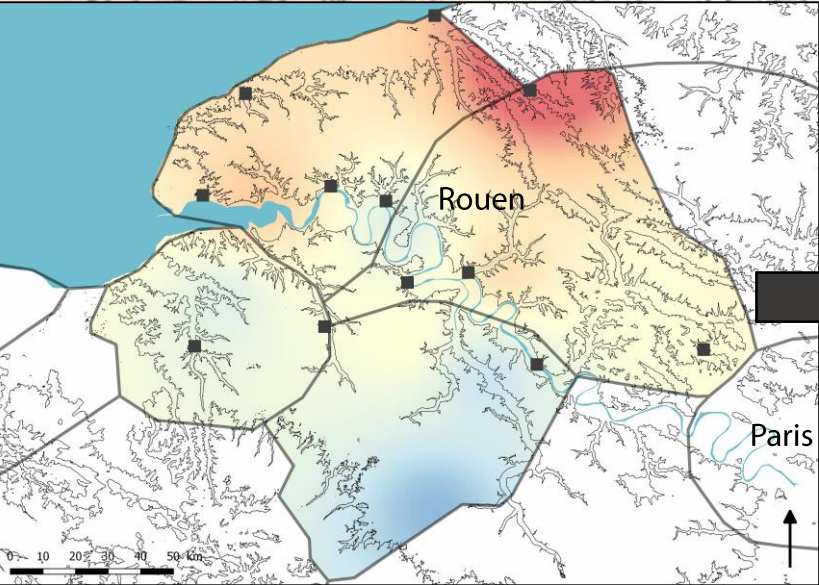
Densities of rural settlement (J. SPIESSER)



50 BC

150 AC

400 AC



Densities of rural settlement evolution (J. SPIESSER)

New roman towns in 10 BC led to a short-distance rural exodus.
It is not until the IIIrd century that the rural space became attractive

JÉRÔME SPIESSER:
A NEW REGIONAL MIGRATION
APPROACH IN ARCHAEOLOGY

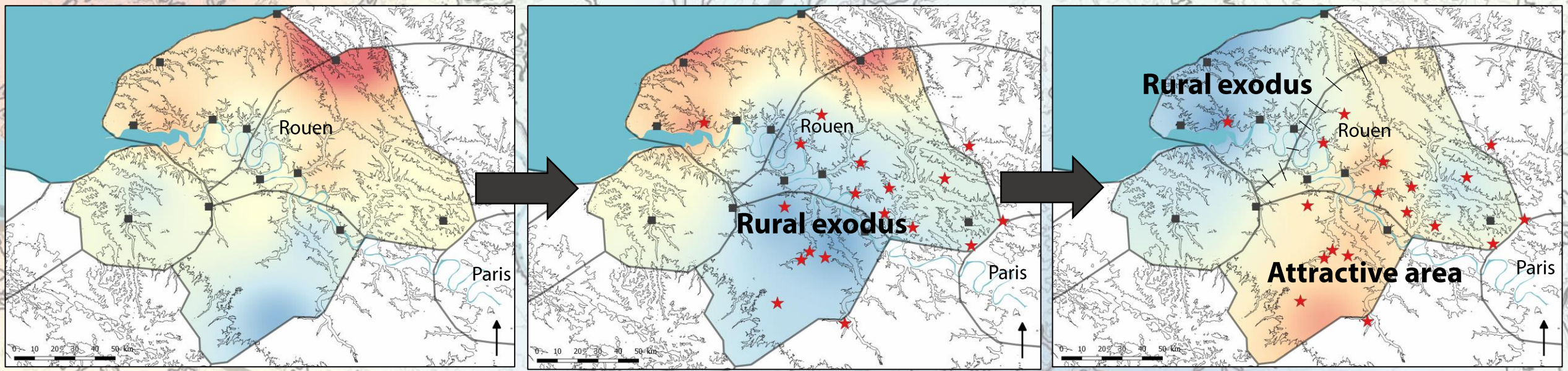
- Protohistoric town
- ★ New roman town

- High density of farm
- Low density of farm

50 BC

150 AC

400 AC

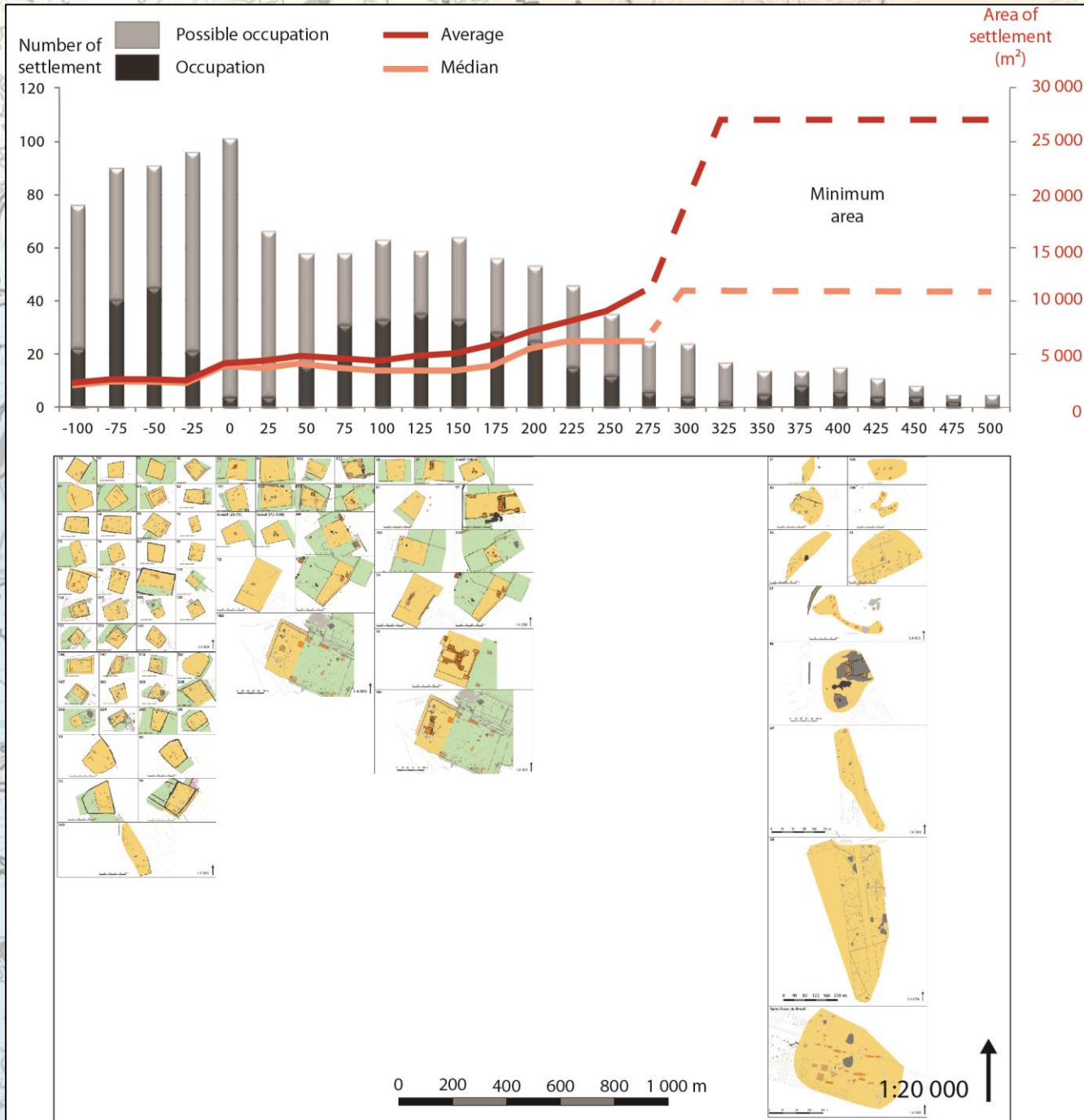


Densities of rural settlement evolution (J. SPIESSER)

What happens in the middle of IIIrd century ?

JÉRÔME SPIESSER:
A NEW REGIONAL MIGRATION
APPROACH IN ARCHAEOLOGY

In the middle of IIIrd century, the number of settlements were divided by 4 while their surface was multiplied by 4.



JÉRÔME SPIESSER:

A NEW REGIONAL MIGRATION
APPROACH IN ARCHAEOLOGY



Densities of rural settlement (J. SPIESSER)

In the middle of IIIrd century, the number of settlements were divided by 4 while their surface was multiplied by 4.

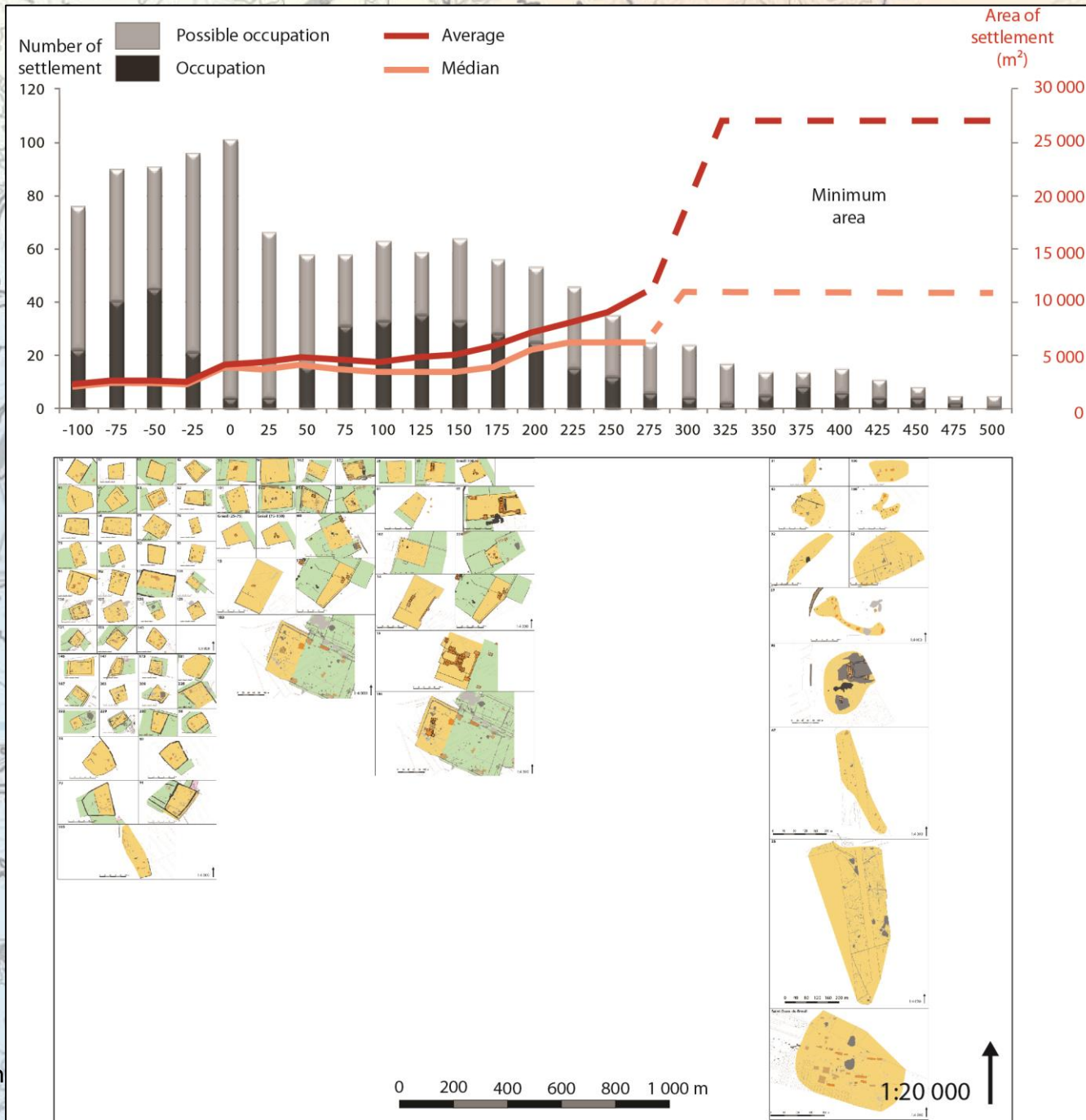
Emperor Augustus' reorganisation led at first to a rural exodus in the close periphery of new towns, before becoming attractive for a new type of rural settlement :
The tiny village

JÉRÔME SPIESSER:

A NEW REGIONAL MIGRATION
APPROACH IN ARCHAEOLOGY



Densities of rural settlements



Thank you for your attention !

For more informations : jerome.spiesser@hotmail.fr



JÉRÔME SPIESSER:

A NEW REGIONAL MIGRATION
APPROACH IN ARCHAEOLOGY

EAA 2018

BARCELONA,
5-8 SEPTEMBER

REFLECTING FUTURES



The low valley of the Seine (J. SPIESSER)