



HAL
open science

The economic impact of a deep decarbonisation pathway for China: a hybrid model analysis through bottom-up and top-down linking

Xin Su, Frédéric Gherzi, Fei Teng, Gaëlle Le Treut, Meicong Liang

► To cite this version:

Xin Su, Frédéric Gherzi, Fei Teng, Gaëlle Le Treut, Meicong Liang. The economic impact of a deep decarbonisation pathway for China: a hybrid model analysis through bottom-up and top-down linking. *Mitigation and Adaptation Strategies for Global Change*, 2022, 27 (1), pp.11. 10.1007/s11027-021-09979-w . hal-03897206

HAL Id: hal-03897206

<https://hal.science/hal-03897206>

Submitted on 13 Dec 2022

HAL is a multi-disciplinary open access archive for the deposit and dissemination of scientific research documents, whether they are published or not. The documents may come from teaching and research institutions in France or abroad, or from public or private research centers.

L'archive ouverte pluridisciplinaire **HAL**, est destinée au dépôt et à la diffusion de documents scientifiques de niveau recherche, publiés ou non, émanant des établissements d'enseignement et de recherche français ou étrangers, des laboratoires publics ou privés.



Distributed under a Creative Commons Attribution 4.0 International License

The economic impact of a deep decarbonisation pathway for China: a hybrid model analysis through bottom-up and top-down linking

Xin Su^a, Frédéric Gherzi^{b,c}, Fei Teng^{a,*}, Gaëlle Le Treut^b, Meicong Liang^a

^a Institute of Energy, Environment and Economy, Tsinghua University, Beijing

^b CIRED - Centre International de Recherche sur l'Environnement et le Développement, 45 bis, avenue de la Belle Gabrielle, 94736, Nogent-sur-Marne CEDEX, France

^c CNRS - Centre National de la Recherche Scientifique, 3 rue Michel-Ange, 75794, Paris cedex 16, France

^d COPPE-UFRJ - Programa de Planejamento Energético, Federal University of Rio de Janeiro

* Corresponding author: Institute of Energy, Environment and Economy, Tsinghua University, Beijing. E-mail: tengfei@tsinghua.edu.cn

Abstract

Designing mid-century low-emission development strategies is crucial to guiding long-term mitigation pathways at national levels. The cost of low-carbon transition is one of the key concerns in deep decarbonisation pathways (DDPs). In this study, we estimate the macroeconomic cost of a deep decarbonisation pathway for China, by integrating an energy-systems optimization model with an economic model through hard linking. Our results show that deep decarbonisation increases the energy expenses of households in the mid-run through, especially, the higher cost of power and its substitution to coal; but not those of firms, who benefit from lower coal prices caused by the reduction of coal demand and reduce costly oil products consumptions early on. Energy-efficiency improvements therefore lead to a decrease of firms' total energy costs, which allows partially compensating the crowding-out effect of low-carbon investment on general productive capital. Compared to business-as-usual, our DDP

scenario consequently comes at a small macroeconomic cost, equal to a lag of less than one year of growth in 2050.

Keywords

Hybrid energy-economy model; China; deep decarbonisation pathways; mitigation

1. Introduction

The Paris Agreement invites Parties to submit mid-century low-emission development strategies before the end of 2020 (Waisman et al., 2019; Bataille et al., 2020), to inform the evolution of their Nationally Determined Contributions (NDC) to global mitigation, the ‘global stocktake’ process and the compatibility with long-term temperature goals. At mid-October 2020, nineteen countries only have done so while most countries are still in the process of drafting and consultation, including China.¹ The cost of transformation of energy systems is a top concern for policymakers to set mitigation goals at both national and sectoral scale during the preparation of mid-century strategies (Fujimori et al., 2019; Jacobsson and Lauber, 2006; Rogelj et al., 2015). The critical policy questions are how the decarbonisation process interacts with economic development, and what the macroeconomic impact is of such transformation towards a low-carbon energy system (Intergovernmental Panel on Climate Change and Edenhofer, 2014).

Both technology-rich models of energy systems (so-called bottom-up or BU models) and macroeconomic models (so-called top-down or TD models) have been used to analyse the implication of mitigation policies, especially the cost of low-carbon transformation. BU models

¹ See <https://unfccc.int/process/the-paris-agreement/long-term-strategies>.

are characterised by detailed information on technologies. They are attractive to policymakers by offering in-depth analysis of energy transformation roadmaps, the associated investment and fuel costs. However, as partial equilibrium models, BU models are not capable of capturing the impact on important non-energy sectors, and also different policy-relevant socio-economic indicators, such as the impact on growth and job creation. On the other hand, the general equilibrium structure of most TD models allows for a thorough economic analysis on critical socio-economic indicators, but lacks technical detail to guide implementation, especially at sectoral level.

Beyond massively changing energy flows and prices, deep decarbonisation pathways to keep global temperature rise well below 2 degrees require significant investment in low-carbon and abatement technologies, as well as de-investment from fossil fuel-based technologies. Those disruptive changes in investment patterns may have a considerable impact on other sectors in the economy. This vital interaction between the energy system and other parts of the economy has prompted combining the two sorts of models through linking or integration, to inform the policymaking process in a more holistic manner (Hourcade et al., 2006). The resulting “hybrid models” link TD and BU models in various ways. Although there are different definitions of model linking, we adopt that of Wene (1996), who defines “soft-linking” as information exchange with human intervention versus “hard linking” as automatic information exchange managed by some computer program.

The deep decarbonisation of China’s energy system has attracted intensive research attention from both the bottom-up and top-down modelling communities. However, very few studies use hybrid models to explore the macroeconomic implication of deep decarbonisation pathways in China. Dai et al. (2016a) combine the TIAM BU model to a world TD CGE model and explore both a baseline and a carbon tax scenario, but their focus is methodological: they compare the

tax incidence on emissions in their TD, BU and linked frameworks rather than the baseline and carbon-tax scenarios.

In this paper, we combine a compact TD model KLEM-CHN with a BU model China-MAPLE through a hard-linking strategy, which allows us to explore the macroeconomic impact of a deep decarbonisation pathway for China in the medium run. Our TD modelling rests on a hybrid energy/economy dataset that significantly improves the linking of BU and TD models through the consistency of calibration data (Hourcade et al., 2006). Our hybrid approach therefore reconciles BU and TD not only by linking existing models but also by building an original hybrid database combining national accounting and energy balance data.

Our paper is organized as follows. In section 2, we review the literature on both Chinese mitigation pathways and hybrid BU/TD modelling. In section 3, we introduce the structure of our TD and BU models, as well as the connection points and linking strategy. We then present the scenario design and discuss scenario results in section 4. We conclude in section 5.

2. Literature review

As the largest greenhouse gas emitter and developing country in the world, China faces many socio-economic challenges alongside its low-carbon transformation. This topic received intensive research interest from TD modellers using CGE as the primary tool of analysis. Past studies have examined the impact of market-based policies, such as carbon taxing and emissions trading schemes, as well as regulations, such as renewable portfolio standards. For instance, Dai et al. (2016b) analyse the cost of achieving a specific reduction target by imposing a carbon tax in China, and stress that a moderate carbon tax is suitable for CO₂ mitigation while a high carbon cost is significantly harmful to the economy and welfare. Liu and Lu (2015) point out that carbon-revenue recycling schemes have a significant influence on the policy effects and

policy impact on the economy. Dai et al. (2018) discuss the impact of aligning renewable energy targets with a carbon emissions trading system. These researches based on CGE models provide important insights into the implementation of pricing policies in the form of either a carbon tax or a cap-and-trade system.

However, China also adopts many non-market policies and measures in the energy transition, especially regulations such as fuel-efficiency standards, power-generation expansion plans, and pollutant emission standards. It is essential to apply modelling tools to analyse the socioeconomic impact of those non-market policies and measures. Some studies on China try to address this requirement by improving the energy-system details in CGE models. Disaggregation of the energy sectors is the first choice in that direction (Dai et al., 2016a, 2018; Zhang et al., 2013). Adapting other exogenous parameters and modules can also help, for instance, Mu et al. (2018) model the shares of renewable energies targeted by the Chinese government through disaggregation of the electricity sector into several subsectors and the adjustment of exogenous mark-up factors for these subsectors. Duan et al. (2014) employ a logistic sub-model in their CGE model to simulate the diffusion process of renewable energy. However, all these efforts are limited to selected sectors and not detailed enough to consider economy-wide non-market policies. Another shortcoming of CGE models is that their parameters are generally calibrated on historical data that does not cover transformations as dramatic as those of the low-carbon transition. This often leads CGE models to estimate higher low-carbon transition costs than BU models do (Fujimori et al., 2019).

A hybrid approach combining BU and TD provides great advantage to incorporate energy-systems information into economic models and represent important feedbacks between models. Although hybrid approaches have been applied to many country studies, very few studies concern China. Chen (2005) builds a MARKAL-MACRO model of China to analyse the GDP

losses of different CO₂ reduction rates. Dai et al. (2016a) implement the global BU model TIAM and the global TD model AIM both separately and linked with a focus on China.

A hybrid framework can be either hard-linked, soft-linked, or fully integrated (Helgesen and Tomasgard, 2018). Soft-linking and hard-linking approaches build upon pre-existing TD and BU models, and provide more transparency and flexibility. They have been applied to low-carbon transition analysis all over the world (Anderson et al., 2011; Fortes et al., 2013; Fujimori et al., 2019; Krook-Riekkola et al., 2017; Soummane et al., 2019; Wu et al., 2019). However, they may leave unresolved some inconsistencies between the two linked models. The fully integrated approaches solve the inconsistency problem (Abrell and Rausch, 2016; European Environment Agency, 2013; Proenca and Aubyn, 2009; Rausch and Mowers, 2014). But the integration framework needs to address the significant challenge of presenting detailed technologies in an economy-wide framework, which limits its application in empirical studies. Thus, a hard-linking or soft-linking hybrid approach is a natural start to combine the technological richness of BD models with the economic detail of TD models (Fujimori et al., 2019; Helgesen and Tomasgard, 2018).

Therefore, to understand the socio-economic challenges faced by China in its low-carbon transition process, we present a hybrid hard-linking framework combining an economy-wide model KLEM-CHN and a BU model China-MAPLE. Compared to Chen (2005), our methodological contribution lies in the extension beyond the aggregate 3-factor production function of MACRO to a CGE setting, albeit aggregated. It also lies in the attention we give to reconcile the TD calibration data of KLEM-CHN with the BU data of China-MAPLE. In that regard, our ‘hybrid’ calibration process improves on that of Dai et al. (2016a, Appendix A.7) by considering agent-specific pricing of energy goods (see Section 3.3 and Annex B), which leads to significant statistical adjustments of economic flows, i.e. of modelling results (Combet

et al., 2014). Our third methodological contribution is to extend model linking to information on the cost of energy supply (see Section 3.3 and Annex D), thereby investigating one of the research frontiers highlighted by Dai et al (2016a). These methodological improvements serve our ultimate purpose of producing an original applied contribution on the deep decarbonisation of China.

3. Method

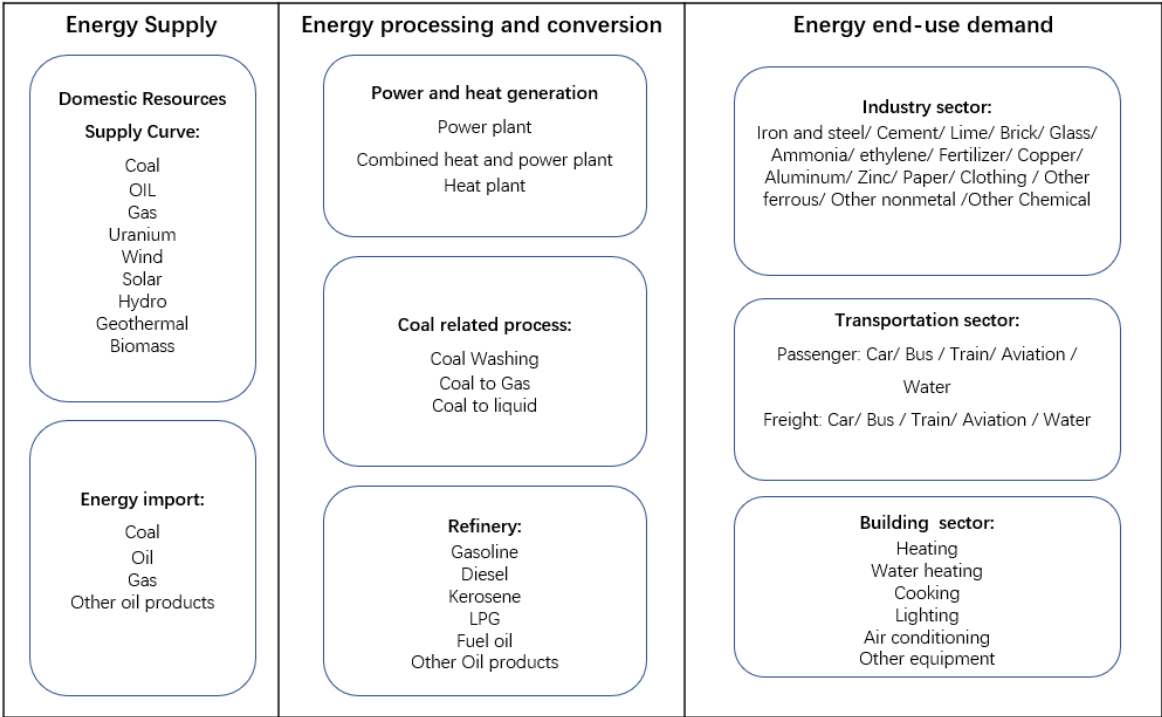
We model energy-economy outlooks of the Chinese economy by way of a hybrid modelling architecture that combines the strengths of the BU, ‘technology-rich’ MAPLE model of Chinese energy systems and the TD, economy-wide KLEM model of China.

3.1 The MAPLE bottom-up model of Chinese energy systems

The China-Multi-pollutant Abatement Planning and Long-Term Benefit Evaluation Model, China-MAPLE, is an energy-system optimization model based on The Integrated MARKAL-EFOM System (TIMES) model generator. TIMES has been developed and is maintained under the International Energy Agency’s Energy Technology Systems Analysis Programme (IEA-ETSAP). In China-MAPLE, the model generator translates the customized energy system into a linear optimization problem to minimize the overall system cost within a set of technical and economic constraints. The objective of the model is to identify the least-cost way to meet energy-service demands through minimisation of the total discounted system cost over the entire modelling time horizon. The system cost consists of investment, operation and maintenance, and energy input costs of all the technologies invested in and operated up to the end horizon. Therefore, the model assumes perfect foresight and perfect competition.

China-MAPLE (Wang et al., 2017; Yang and Teng, 2017; Yang and Teng, 2018; Yang et al., 2017; Yang et al., 2018) portrays the entire energy system of China with a detailed description of thousands of technologies in energy supply, process, conversion and end-use sectors (Figure 1).

Figure 1 The structure of the energy-system model China-MAPLE



Energy supply describes resource exploration and extraction in different regions of China through supply curves for primary energy, including coal, oil, gas, and nuclear, as well as renewables. Imported energy is also modelled through different supply curves to represent cost variants among different producing countries. The energy process and conversion module covers activities in coal washing, coking, oil refining, and electricity and heat generation. These technologies are represented in China-MAPLE by the parameters of resource endowment, efficiency, investment cost, fixed and variable operation costs. The energy end-use module captures the activities of end-use sectors, such as industry, transportation and the building sector

(i.e., the physical output of industrial products, the passenger-kilometres travelled and ton freight- kilometres transported, the lighting, cooking, heating, water heating, air-conditioning, and use of electrical equipment by households). Those activities are projected according to socio-economic assumptions and the plans of the government. When the model is used alone, the socio-economic assumptions are exogenous; when coupled to KLEM-CHN, they are obtained from KLEM-CHN. Carbon dioxide emissions and important air-pollutant emissions associated with fossil-fuel consumption are also modelled. For more information about China-MAPLE, please refer to (Yang and Teng, 2017; Yang and Teng, 2018; Yang et al., 2017; Yang et al., 2018).

3.2 The KLEM top-down model of the Chinese economy²

The KLEM model (for Capital, Labour, Energy and Materials) is designed to build macroeconomic outlooks under constraint of exogenous energy flows and prices trajectories informed by BU modelling, on both international and domestic markets. KLEM is indeed meant as a macroeconomic model to link with any BU modelling experiment (Gherzi, 2015), in the spirit initiated by Hoffman and Jorgenson (1977) with numerous recent applications (Cohen and Caron, 2018; Dai et al., 2016a; Fortes et al., 2014; Helgesen et al., 2018; Labriet et al., 2015; Martinsen, 2011).

KLEM differentiates two sectors of economic activity only, one sector aggregating energy branches and the other sector the rest of the economy. This compact nature has benefitted one previous KLEM implementation on the complex short-run macroeconomics of Saudi Arabia (Soummane et al., 2019). The present Chinese implementation KLEM-CHN develops more standard macroeconomics at longer horizons in larger time steps, but couples to the China-

² This description of KLEM draws from Soummane et al. (2019).

MAPLE model of the TIMES family through an iterative process of data exchange to convergence of both numerical systems. In such a framework, the benefit of KLEM is in comparison to the aggregate MACRO option of top-down coupling to TIMES (Manne, 1977; Chen, 2005; Remme and Blesl, 2006; Chen et al., 2007).³

The macroeconomic core of KLEM is a dynamic, recursive model deriving from a Solow-Swan growth model. KLEM-CHN pictures economic growth in 5-year time steps as driven by exogenous assumptions on the supply and productivity of labour. The vector of domestic energy and non-energy outputs at year t , Y_t , is a function f_t of the stock of capital K_t , of the labour force L_t , and of the intermediate consumption of energy and non-energy goods. The t index to f conveys that f varies with time via exogenous labour productivity gains (the Harrod-neutral assumption on technical progress). Capital stock dynamics follow the standard accumulation rule at a constant depreciation rate with explicit accounting of year-to-year variations between 5-year time steps (see Annex C.3). Considering the 5-year interval and 2050 horizon of KLEM-CHN, both its labour and capital markets clear by adjustments of the wage w and the rental price of capital p_K . Its trade balance is exogenous (Equation 13 of Annex A) following neoclassical practice but its macroeconomic closure is on domestic savings rather than on investment, following Johansen (1960), to reflect the degree of governmental control on the Chinese economy. This implies a growth trajectory more robust to scenario variants at the cost of final consumption variations—which we will duly report when analysing scenarios. The investment effort is set as a share of GDP (Equation 9 of Annex A) that evolves to warrant that

³ Compared to MACRO, KLEM covers international trade and input-output loops, although at a level of aggregation that forbids the explicit modelling of the influence of shifting sectoral contributions to non-energy activity. We postpone to further publication analyses based on coupling China-MAPLE to a China version of the multisector model IMACLIM (see <http://www2.centre-cired.fr/IMACLIM/IMACLIM-Network> and Le Treut et al., 2019).

the capital stock grows apace with efficient labour when potential growth, defined by efficient labour increases, concretises (see Annex C.2).

KLEM models non-energy production as a nested structure of Constant Elasticity of Substitution (CES) trade-offs between inputs (Equations 2 to 6 of Annex A), and non-energy trade as elastic to prices (Equations 10 and 11 of Annex A). However, linkage to China-MAPLE translates into full exogeneity of the energy system. The growth trajectories traced by KLEM-CHN thus build around exogenous energy consumptions and trade as well as around exogenous assumptions on the cost structure of energy supply beyond its own energy intensity and on the specific margins (differences of consumer prices to average supply costs) on each energy sale. For lack of easily exploitable information in China-MAPLE, the costs of potential energy savings in the non-energy sector proceed from the nested CES specification as incremental value-added costs, under the assumption that ‘business-as-usual’ China-MAPLE energy consumptions and non-energy output increasing at the pace of efficient labour supply define cost-free energy-productivity gains (‘autonomous energy efficiency improvements’, AEEI).

These constraints on energy volumes, costs and prices weigh on economic growth and non-energy consumption by reserving part of value-added to exogenous energy expenses and endogenous, attached energy-efficiency costs and part of primary factor endowments to the supply of some exogenous volume of energy. Annex A reports the exhaustive nomenclature and formulary of KLEM-CHN.

3.3 Coupling China-MAPLE to KLEM-CHN

We couple China-MAPLE to KLEM-CHN by the iterative exchange of modelling results up to convergence (see Table 1 for the information exchanged between the two models). At the beginning of the iterative process, we run China-MAPLE on any exogenous energy demand

trajectories to project the Chinese energy system in 5-year steps from its 2010 calibration year up to 2050. We then process China-MAPLE outputs (or assumptions on international energy prices) into a series of energy flows, prices and costs trajectories to define inputs to KLEM-CHN. We run KLEM-CHN under constraint of this energy-system data to compute the GDP and non-energy output trajectories compatible with it and feed these trajectories back into China-MAPLE to run the latter model again (Figure 2). We iterate the process until either dataset varies less than a given tolerance threshold between one iteration and the next. The resulting China-MAPLE and KLEM-CHN outputs provide a consistent, highly detailed picture of the Chinese energy system embedded into the broader Chinese economy at activity levels that take account of feedback loops between energy, non-energy and primary factors supply, demand and relative prices.

Figure 2 Model coupling architecture

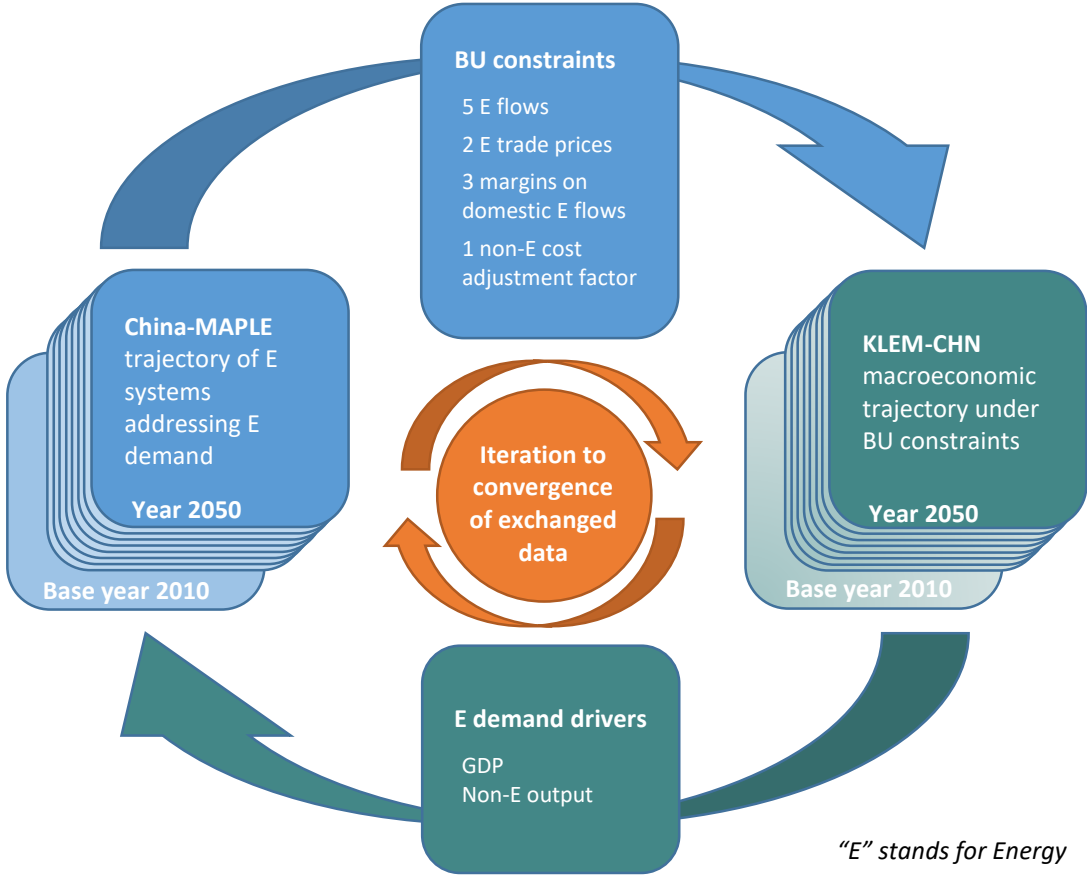


Table 1 Information exchanged between China-MAPLE and KLEM-CHN

Results from China-MAPLE	Influenced variables in KLEM
Energy consumption in energy sectors (Power, Heating, Coking, Refinery sectors)	Energy Inputs to transformation by energy firms
Marginal costs of primary energy and levelized costs of secondary energy	Price of Inputs to transformation by energy firms
Energy consumption in Industry and freight transportation and commercial buildings	Final energy consumptions of non-energy firms
Marginal costs of primary energy and levelized costs of secondary energy	Price of final energy consumptions of non-energy firms
Energy consumption in residential buildings and passengers transportation	Final energy consumptions of households
Marginal costs of primary energy and levelized costs of secondary energy	Price of final energy consumptions of households
Net energy imports	Energy imports
Marginal costs of energy imported	Price of energy imported
Net energy exports	Energy exports
Marginal costs of primary energy and levelized costs of secondary energy	Price of energy exported
Results from KLEM	Influenced variables in China-MAPLE
Real non-energy output	Industry products demand including iron, steel, cement, lime, brick, glass, ammonia, ethylene, fertilizer, copper, aluminium, zinc, paper, clothing, other ferrous metals, other metals, other chemicals. Heating, water heating, cooking, lighting, air-conditioning and other equipment services in commercial buildings Freight transportation services demand
Real GDP	Passenger transportation services demand Heating, water heating, cooking, lighting, air-conditioning and other equipment services in rural residential buildings Heating, water heating, cooking, lighting, air-conditioning and other equipment services in urban residential buildings

Our methodological contribution does not lie in this iterative procedure—which Jorgenson proposed more than 40 years ago in our field (Hoffman and Jorgenson, 1977). It rather lies in upstream data consistency efforts as well as in original data processing to transform China-

MAPLE information on any outlook scenario into information compatible with the input-output framework of KLEM-CHN.

Upstream data consistency efforts consisted in the construction of an original hybrid dataset reconciling Chinese national accounting, energy balance and energy price statistics, on which to calibrate KLEM-CHN (see Annex B). We conducted the process on a 42-sector disaggregation of the 2010 Chinese economy (National Statistics Bureau, 2011) with additional information from a 135-sector 2012 disaggregation (National Statistics Bureau, 2015). It revealed significant inconsistencies between the energy expenses of national accounts and the energy balance and price statistics for major energy consuming sectors. Correction of such discrepancies allowed calibrating KLEM on a hybrid dataset consistent with the energy calibration data of MAPLE, thus significantly improving the relevance of our coupling endeavour. Importantly, the procedure extends to the original elicitation of agent-specific margins bridging the gap between the average supply price of energy plus net taxes, and the specific average consumer prices observed for each aggregate agent of KLEM-CHN: non-energy firms, energy firms, households and foreign importers (see Annex B).

Processing China-MAPLE results into formats compatible with KLEM-CHN is straightforward enough for energy flows after accounting for the same methodological discrepancies between energy balance and national accounting statistics that we corrected when building our hybrid 2010 database. These regard the decentralised generation of electricity, the geographical versus administrative take on national perimeters, especially affecting the recorded transport fuel consumptions or expenses (the question of international bunkers), and the aggregation of all transport-related consumptions into one single end-use versus their distribution across all activity branches, including transport services, and households. After treatment of these discrepancies, we aggregate China-MAPLE results into 5 out of the 6 trajectories of energy

flows considered in KLEM-CHN: energy imports, energy ‘consumptions’ (transformations) by the energy supply sector, final energy consumptions by the non-energy sector and by households, and energy exports. The sixth trajectory, that of the output of the energy sector, flows from market balance on the five former ones (see KLEM Equations 14 and 15, Annex B and Annex D).

Processing China-MAPLE results into trends of energy costs or prices applicable to KLEM-CHN is more challenging. One important point to consider is that China-MAPLE models energy costs and not market prices—with the exception of exogenous international prices of tradable resources. As a linear programming model, China-MAPLE systematically reveals the marginal costs of supply of all energy carriers as the dual variables of the supply constraint to the optimisation. These marginal costs reflect the supply curves of primary energy well, but not those of secondary energy because of the determinant impact of scenario constraints on supply, which distorts implicit supply curves.⁴ We therefore rather compute the average levelised cost of secondary energies as a proxy of their production costs. We then compute averages of marginal or levelised costs weighted by supply shares to produce aggregate ‘price’ trajectories for the three domestic uses of the energy good in KLEM-CHN (see Annex D).

A second point to consider is that China-MAPLE, as a partial equilibrium model of energy systems, builds on implicitly constant relative prices of all non-energy goods and factors. This forbids forcing in KLEM-CHN the above ‘price’ trajectories straight out of China-MAPLE, because they are inconsistent with the endogenous price system of KLEM-CHN. To address

⁴ One simple example to consider is that of the combined constraints of a minimum capacity of renewable power generation and a maximum capacity of coal power generation. As long as the cap on coal capacity is not reached, the marginal cost of electricity is that of coal generation, and depends on whether the existing coal plants are or are not operating at full capacity (additional investment required or not). This marginal cost may be far below the average cost of power supply, which also reflects the specific costs of the renewable quota.

this inconsistency, we develop an original method in three steps. We start by computing proxies of ‘bottom-up’ energy price trajectories in KLEM-CHN (hereafter ‘BU KLEM’ trajectories) by crossing China-MAPLE-derived trajectories regarding the energy intensity of, and price of energy to, energy supply, with all other elements of the cost structure, taxes and margins applying to each energy consumer price maintained at their base-year values. We compare these trajectories with those inferred from China-MAPLE, and use, at each time step, the closest correspondence across the reconstructed prices to compute what adjustment of KLEM-CHN non-energy costs of energy supply allows bridging the gap between ‘BU KLEM’ and China-MAPLE variations for that price. Factoring in this non-energy cost adjustment, we finally compute what adjustments of the trade margins on each energy sale allow aligning the other ‘BU KLEM’ price trajectories on their China-MAPLE counterparts. To synthesise, our procedure detects what minimum adjustment of non-energy costs is necessary to bring one of KLEM-CHN energy prices in line with its China-MAPLE counterpart, taking account of both China-MAPLE information on the evolution of average energy costs and its implicit assumption of constant non-energy prices. It then computes what adjustments of the margins on energy sales are necessary to bring the other KLEM-CHN energy prices in line with their own China-MAPLE counterparts taking account of the same set of information and assumptions (see Annex D).

We repeat this complex procedure and the computation of aggregate energy flows for all time steps and at each iteration of the data import from China-MAPLE into KLEM-CHN. At the end of the convergence process, the cost of energy supply of KLEM-CHN builds on whatever adjustments of non-energy intensities to energy supply and of agent-specific sales margins are consistent with China-MAPLE data, and on endogenous prices.

4. Scenario exploration

We now turn to application of the above methodology to the exploration of two scenarios of Chinese energy/economy trajectories up to 2050.

4.1 Scenario description

Our Business as usual (BAU) scenario reflects the impact of the 13th Five-Year Plan, covering a wide spectrum of policies at the national and sectoral levels, including energy supply development plans and efficiency standards (Table 2). However, it leaves aside the planned Emission Trading System, whose exact perimeter and provisions regarding the initial distribution of emission rights have not been promulgated yet. Beyond 2020, the BAU scenario assumes general prolongation of the trends inscribed in the 13th Five-Year plan regarding the diffusion rate of efficient technology and renewable options as well as the rate of energy efficiency improvements not embedded in specific technology options (e.g. of behavioural nature). Additionally, it assumes gradual structural change of the Chinese economy in the form of a decreasing contribution of industries and an increasing contribution of services to activity, with important bearing on the energy and carbon intensity of growth. The aim of the BAU scenario is to assess current policies and to illustrate their consequences on energy consumptions and CO₂ emissions in the long run.

Our deep decarbonisation pathways (DDP) scenario was developed to inform the preparation of China's NDC before the Paris Agreement by illustrating one possible trajectory leading China to a low-carbon future. This scenario was underpinned by detailed sector-level analysis to explore potential technical solutions for the transition towards deep decarbonisation. Three key pillars of deep decarbonisation were emphasised, which may have a significant impact on the low-carbon transition of China: the improvement of energy efficiency, the replacement of

coal and the penetration of electric vehicles in transportation. Exogenous energy efficiency improvements (coupling to KLEM-CHN allows accounting for their costs, see Section 3.2 and Section 4.3 below) are considered in all end-use sectors (Table 2).

Both our BAU and DDP are therefore scenarios of energy efficiency and technology prescriptions rather than of mitigation objectives. China-MAPLE's optimisation of the Chinese energy system is conditional to such prescriptions. For that reason, the emission reductions of the DDP scenario come at suboptimal costs. Our purpose is indeed the positive description of expected governmental plans rather than the normative description of the optimal pathway to some carbon-control objective.⁵

⁵ Our numerical method would guarantee optimality from the point of view of the minimisation of technical costs only, under constraint of the converged level of economic activity. We would not have any guarantee that the macroeconomic costs of the transition would be minimum.

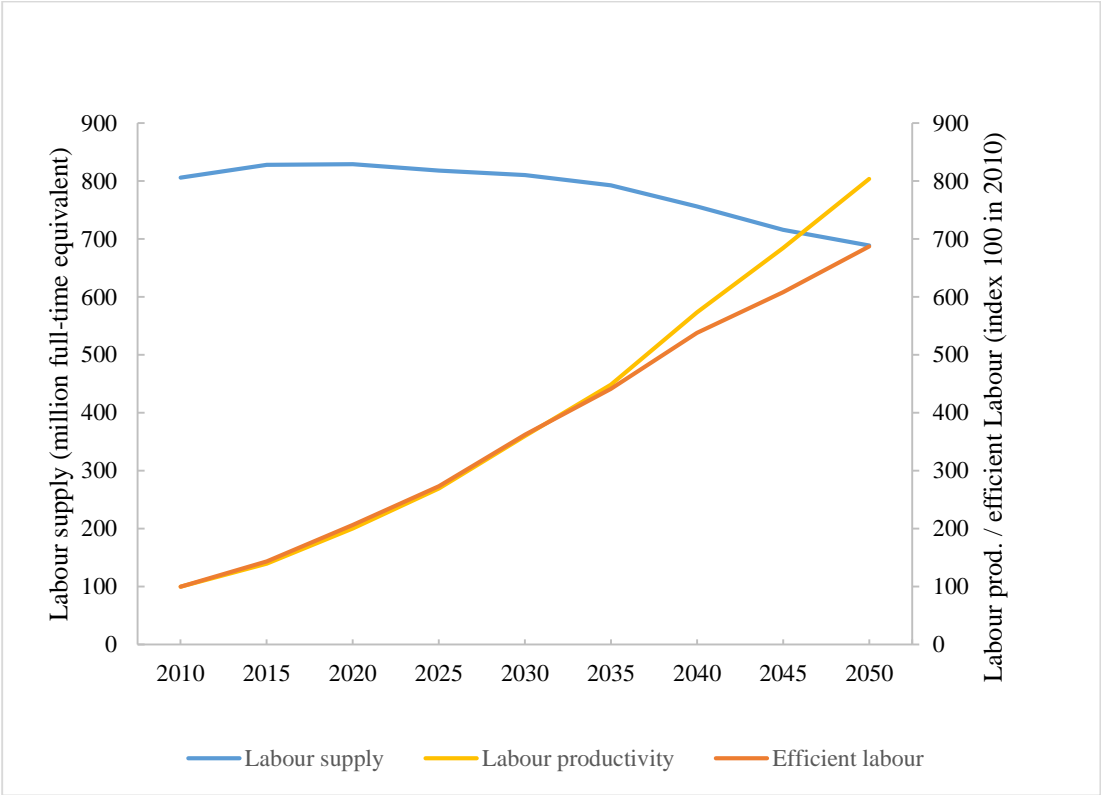
Table 2 Scenario constraints

Sector	BAU	DDP
Power generation	Share of coal-fuelled plants declines to 50% by 2020 and remains below that cap.	Share of coal-fuelled plants declines to 50% by 2020. Ban on new coal plant after 2020 (with or without CCS).
	Nuclear power capacity reaches 58GW in 2020 then follows past development trends to 200GW in 2050.	Nuclear power capacity reaches 58GW in 2020 then accelerates its development to reach 410GW by 2050.
	Gas-fired capacity reaches 116 GW in 2020.	Gas-fired capacity reaches 116 GW in 2020.
	Hydropower capacity reaches 380GW in 2020 then reaches its resource-endowment limit of 450GW in 2040.	Hydropower capacity reaches 380GW in 2020 then reaches its resource-endowment limit of 450GW in 2040.
	Wind and solar power capacity reaches 300GW in 2020 then grows moderately to at least 700GW in 2050.	Wind and solar power capacity reaches 300GW in 2020 then grows rapidly to at least 2800 GW in 2050.
Industry	Small-scale industrial plants remain in activity.	Small-scale industrial plants are phased out by 2020 and replaced by more efficient large-scale plants.
	Efficient technologies penetrate following the 13th 5-year plan up to 2020 then keep penetrating at similar rates up to 2050.	Efficient technologies penetrate following the 13th 5-year plan up to 2020 then accelerate. In 2050, only the most efficient technologies are invested in.
Transport	Total number of electric and hybrid vehicles reaches five millions in 2020.	Total number of electric and hybrid vehicles reaches five millions in 2020.
	Fuel efficiency improves through tightening standards.	Fuel efficiency improves through tightening standards.
	After 2020, electric and hybrid vehicle sales follow recent historical trend but decline to average vehicle sales growth after 2025	After 2020, sales of internal-combustion-engine light-duty vehicles are capped. Share of electric and hybrid vehicles at least 80% by 2050.
		After 2020, sales of internal-combustion-engine buses and trucks are capped. Shares of electric & hybrid buses and trucks at least 60% and 30% by 2050.
Buildings	Energy efficiency of heat & power plants increases 0.49% per year.	Energy efficiency of heat & power plants increases 0.49% per year. Gas heating plants and electric heaters provide at least 90% of heating service by 2050.
	LED provide at least 15% of lighting services by 2050.	LED provide at least 20% of lighting services by 2050.
	Energy efficiency of cooking and water heating increases at 0.49% per year.	Energy efficiency of cooking and water heating increases at 0.49% every year. Forced shift to electricity and gas equipment, phase-out of coal consumption in urban areas.
		Performance of residential insulation improved by 80% by 2050 compared to 2010.

All scenario constraints act as lower-bound or upper-bound constraints to the energy system cost-minimisation performed by China-MAPLE.

On the side of economics (in KLEM-CHN), both the BAU and DDP scenarios share a unique set of growth drivers in the form of exogenous trajectories of labour supply and labour productivity gains. The labour supply trajectory is that of the International Labour Organisation (ILO, 2014) extrapolated beyond 2020 to reflect projections of the 20 to 69-year-old Chinese population by the United Nations Population Division (United Nations Development Programme, 2015). The labour productivity trajectory calibrates on this labour supply trajectory and the projection of Chinese GDP by the 2014 *New Climate Economy* report of the Global Commission on the Economy and Climate (Stern and Calderon, 2014). Both trajectories combine into growth of efficient labour, or potential output growth, of 587% by 2050 compared to 2010. The corresponding average annual growth rate is of 4.94%, a marked decline from current trends caused by the decreasing labour supply (Figure 3).

Figure 3 Growth drivers common to the BAU and DDP scenarios



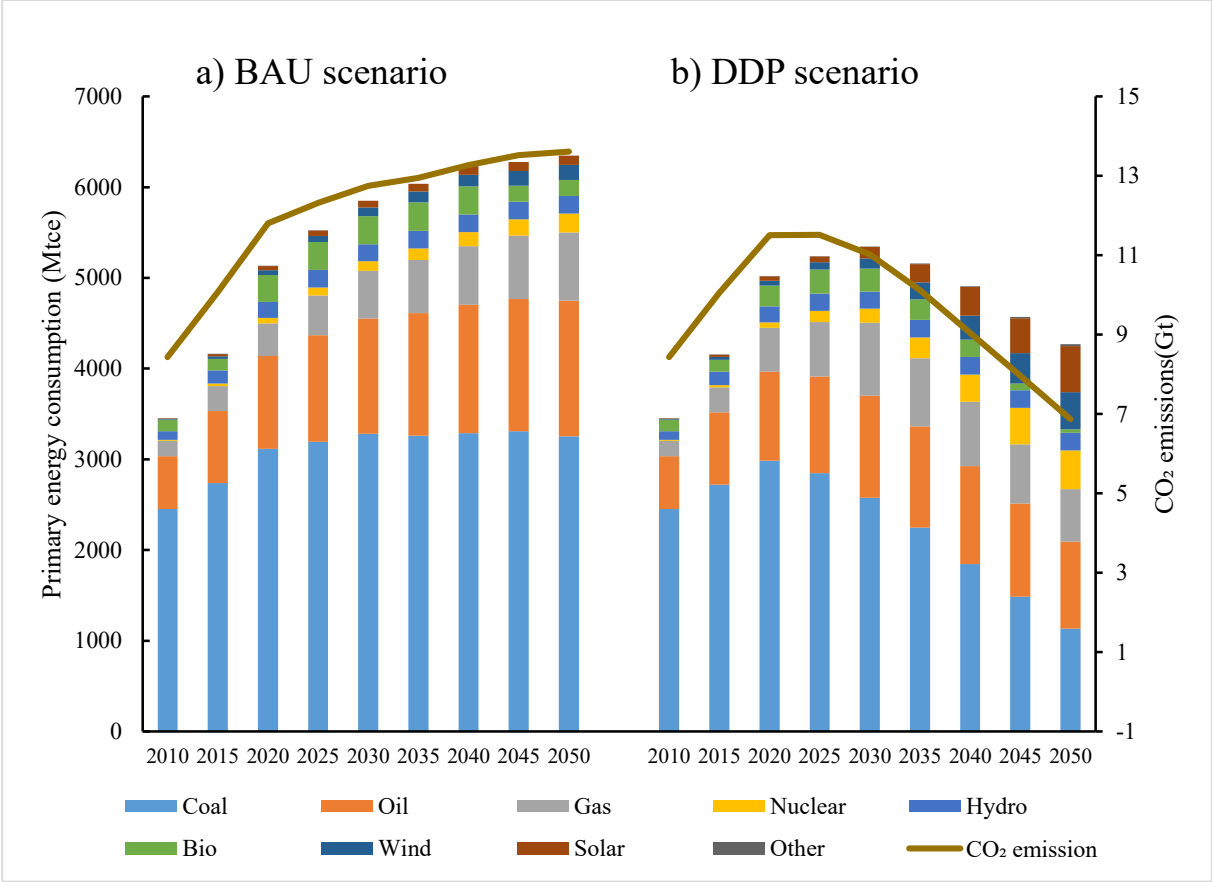
Sources: see text.

Calibration of the investment rate trajectory on the potential growth trajectory (see Section 3.2 on our choice of a Johansen closure and Annex C.2 on the calibration) results in investment efforts steadily declining over the projection horizon to reach 28.2% of GDP in 2050.

4.2 Energy systems results

We start our analysis of energy-systems results by considering energy supply, then moving to energy demand by firms and households, then to energy imports. Under the BAU scenario, primary energy consumption almost doubles between 2010 and 2050, without reaching a peak. The energy mix is still dominated by coal, together with a strong booming of oil consumption in the transportation sector. Energy-related CO₂ emissions increase from 8.4 billion tons in 2010 to 13.6 billion tons in 2050, only plateauing after 2045. With significant mitigation policies in place, under a DDP scenario, carbon emissions peak between 2020 and 2025 at a level above 11.5 billion tons, then reduce to 6.9 billion tons in 2050, a 49.5% cut from BAU. Primary energy consumption also reaches a maximum of about 5350 million tons of coal-equivalent (Mtce, in electricity-equivalent terms) in 2030, then slowly reduces to about 4270 Mtce in 2050. Those trends mark a significant decoupling of carbon emissions from economic growth, leading to 60% and 84% reductions of energy intensity per unit of GDP in 2030 and 2050. The energy mix under the DDP scenario expectedly shows a trend towards clean and low-carbon energies. Electricity becomes a major energy carrier in end-use by a tripling of consumption between 2010 and 2050. The total electricity consumption grows from around 3000 kWh per person in 2010 to more than 8700 kWh per person in 2050. The share of electricity in final energy demand also increases from 18% in 2010 to 34% in 2050. Lastly, the share of non-fossil fuel electricity rises to 72% in 2050 due to the fast growth of wind and solar, along with the continuous growth of nuclear.

Figure 4 Primary energy consumptions and CO₂ emissions in the BAU and DDP scenarios

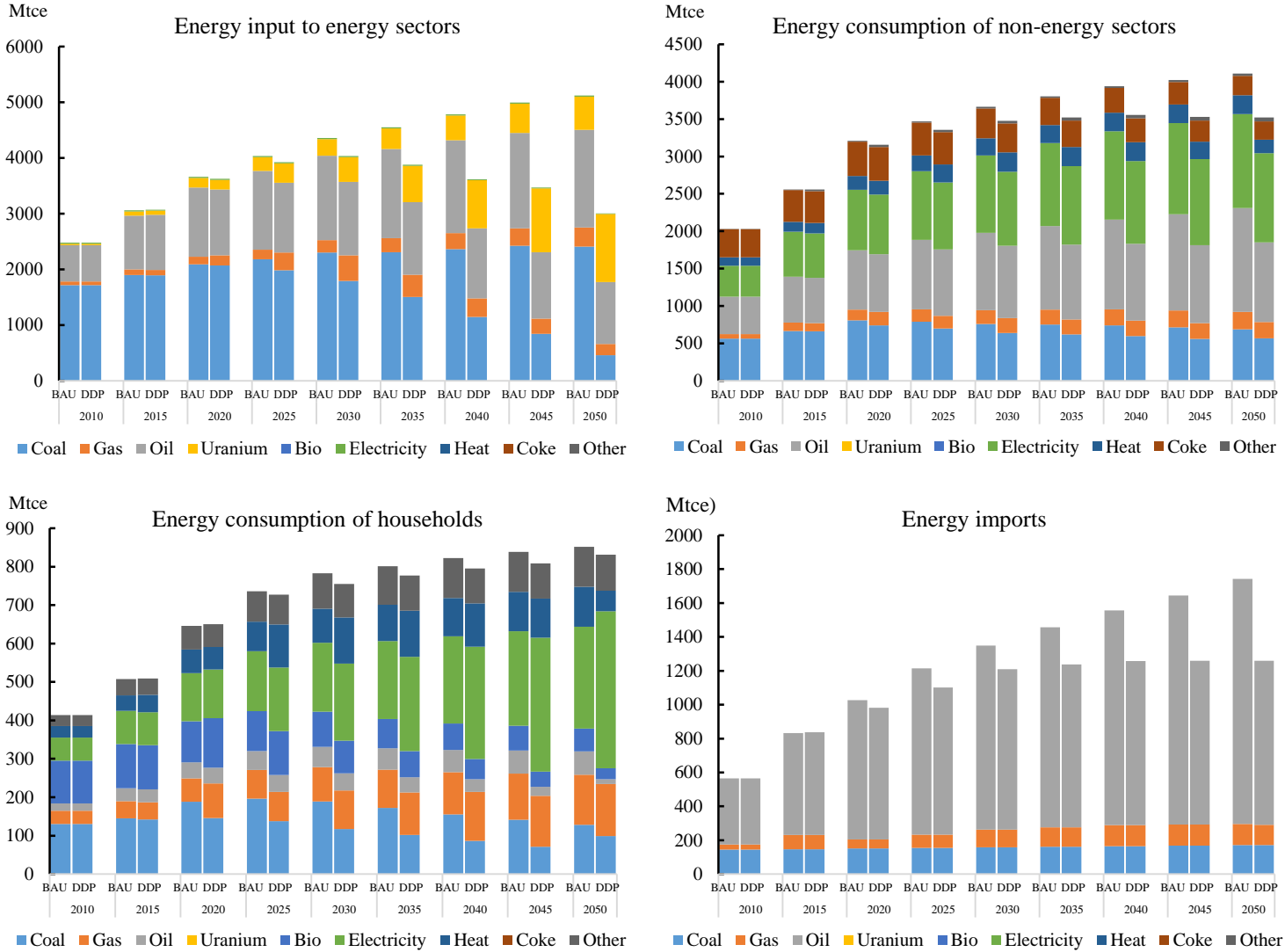


Source: converged China-MAPLE/KLEM-CHN modelling.

Compared with the BAU scenario, the DDP scenario presents significant decarbonisation of the energy supply (see Figure 4 and Figure 5 a)). Coal is phased out largely due to the fast expansion of renewables together with a steady growth of nuclear. The final energy consumption of firms also presents a similar trend of replacement of both coal and liquid fuels by electricity—mainly through electrification of the vehicle fleet for the latter vectors. Notwithstanding, the electricity consumption of firms decreases because of the improvement of energy and resource efficiency. In the household sector, coal is again replaced by electricity, for district heating purposes. The oil consumption of households is also reduced a lot due to the phasing out of internal combustion vehicles and fuel economy improvements. Traditional biomass is also replaced by commercial energy along with the fast urbanization process in China. The consequence of these mix changes is that the DDP scenario significantly reduces energy imports, especially oil

imports, leading to an improvement in energy security. The import of gas and coal is similar in the BAU and DDP scenarios, reflecting the lower supply cost of imports. Thus, the reduction of coal consumption is achieved through the closure of domestic production capacity rather than a reduction in import.

Figure 5 Structure of energy flow in the BAU and DDP scenarios



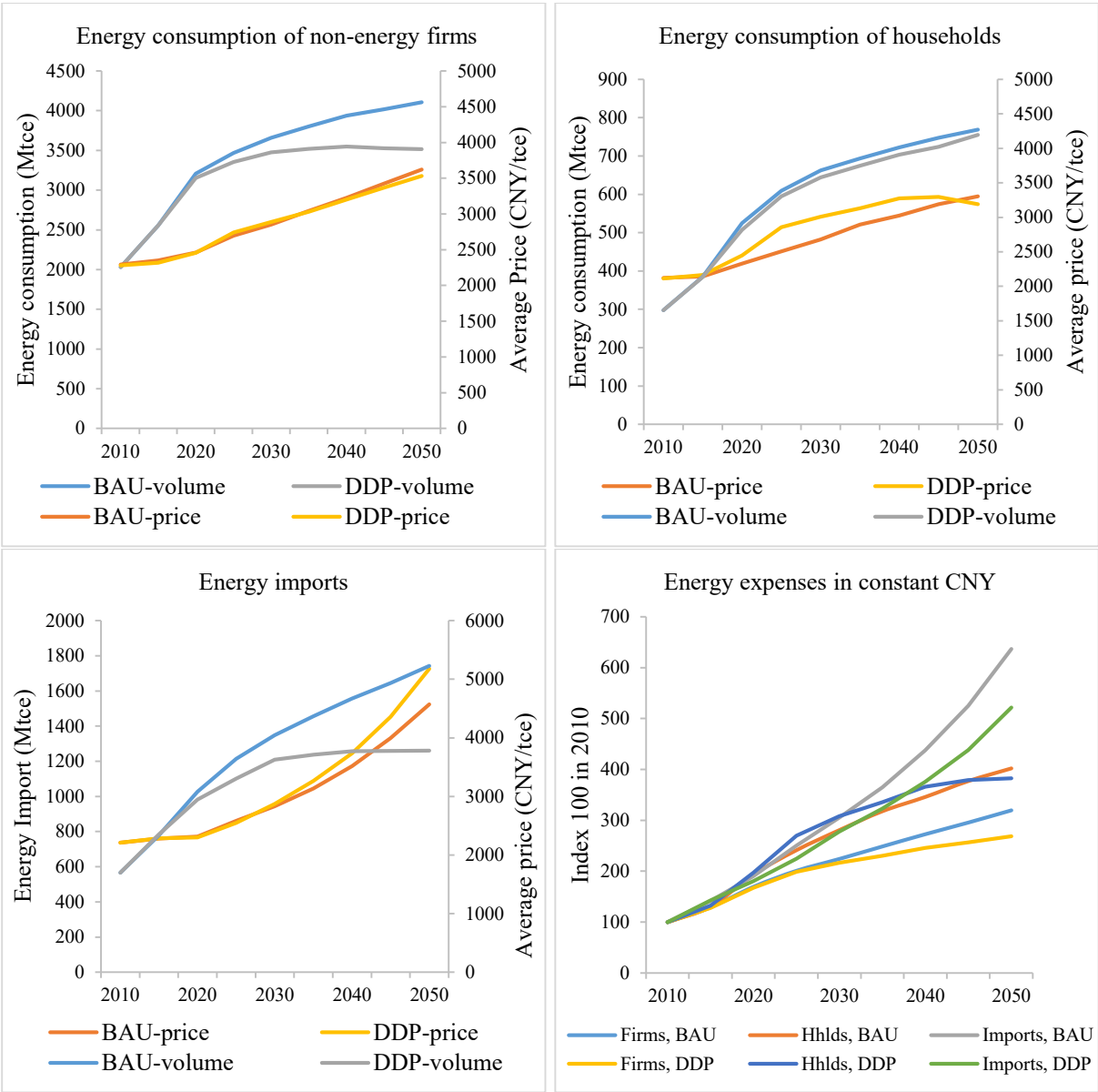
Source: converged China-MAPLE/KLEM-CHN modelling The Energy input to energy sectors aggregates flows for consumption and transformation purposes.

4.3 Macroeconomic results

To ease the interpretation of the macroeconomic trajectories of both scenarios, we start by reporting on the converged values of some of the aggregate energy-system information transferred from China-MAPLE to KLEM-CHN.

In BAU, final energy consumptions of firms and households rise sharply up to 2020 then much more moderately to 2050 (Figure 6, upper panels). Comparing the trajectory of firms' consumption to that of potential output (the efficient labour of Figure 3) betrays the large energy efficiency gains of general economic activity in later years projected by China-MAPLE. Total energy expenses of firms and households (Figure 6, lower-right panel), despite rising prices, also progress much less rapidly than potential output. Import volumes (Figure 6, lower-left panel) rise faster than both final consumptions, marking the increasing dependency of Chinese energy supply to foreign sources. Their average price rises slowly in early years, then faster under the influence of increasing prices of all fossil imports. The two trends combine into a convex trajectory of the expenses on energy imports (Figure 6, lower-right panel). However, the sharp slowing down of final demand after 2025 is sufficient to keep the growth of energy import expenses below that of potential output at our end-horizon (compare lower-right panel of Figure 6 to Figure 3). The lower trajectory of households' expenses and the even lower trajectory of firm's expenses, although raw China-MAPLE data do not account for KLEM-CHN feedback loops on prices, point at decreased energy constraints on growth, i.e. at growth that could supersede its potential from efficient labour increases alone.

Figure 6 Main converged China-MAPLE outputs informing KLEM-CHN in the BAU and DDP scenarios



Source: China-MAPLE results. Volume energy consumptions differ from those of Figure 5 because of conceptual differences between energy flow statistics and national accounting (see Annex B).

Compared to BAU, DDP exhibits consumption volumes of firms growing less rapidly in early years and broadly plateauing after 2030. The consumption volumes of households are also lower, but only marginally so, and the gap to BAU consumptions is even decreasing in later years. Still, the combined energy savings gradually slow down the growth of imported volumes up to an actual plateau from 2040 on. Consequently, the gap with the continually increasing import volumes of BAU rapidly widens. However, because of shifts in the import mix, the

average import price is increasingly higher in DDP than in BAU. Energy import expenses therefore grow increasingly fast in DDP like they do in BAU, although at slower rates.

Understanding the evolutions of the average prices faced by firms and households requires considering that the 2010 price of one tce of coal is approximately four times below that of one tce of electricity, which is itself approximately two times below that of oil products. The ordering of the three prices remains unchanged through time and across our two scenarios despite the increasing contribution of wind and solar technologies to power supply in DDP. It defines how changes of mix modify average prices.

On the side of firms, DDP prompts substitution of electricity to both coal and oil products from early years on. The savings from substituted oil products consumptions turn out to offset the cost increases from substituted coal consumptions, and the average price barely changes before being processed into KLEM-CHN (see Annex D). Consequently, firms' expenses grow increasingly slower in DDP than they do in BAU.

On the side of households, electricity similarly substitutes to coal in early years, but to oil products only in later years when electrification of the personal vehicle fleet has had time to develop. The consequence is that the average price of households' energy rises sharply in the short term and remains 8% to 14% above BAU values up to 2040. After 2040, prices peak then decrease under the combined influence of the quasi phasing-out of oil products consumptions, and cost reductions specific to renewable power supply through 'leaning-by-doing'. Therefore, households' energy expenses under DDP fall below their BAU level in 2050.

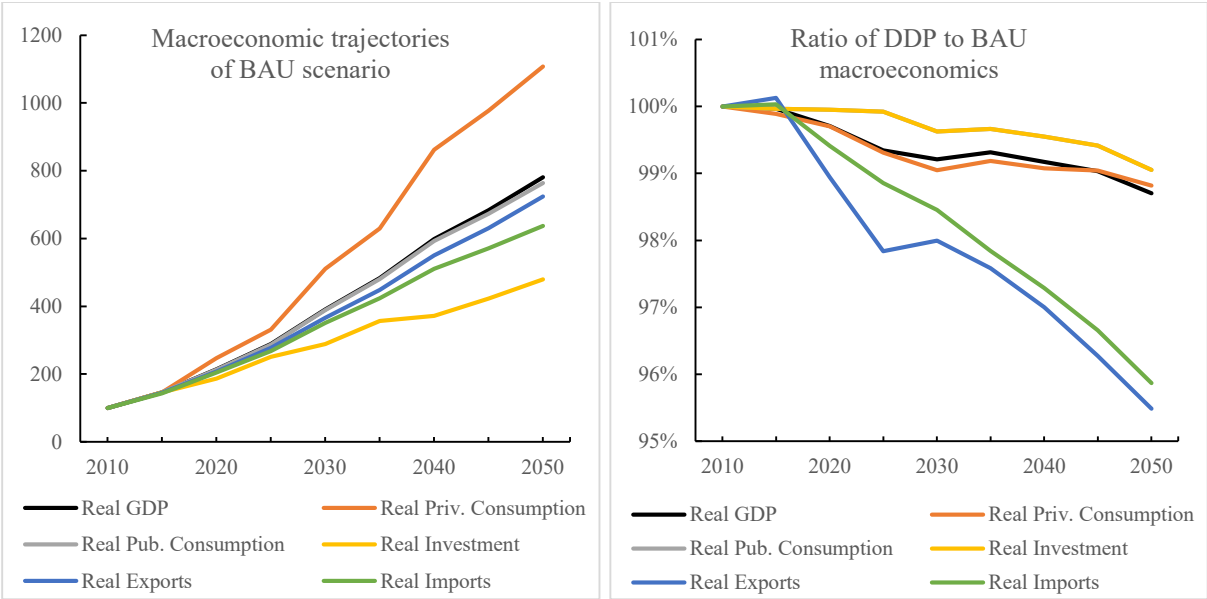
More generally, all expense profiles remain below that of potential output (compare the lower-right panel of Figure 6 to Figure 3), which points again at a decreasing energy constraint on growth. However, one important element missing in this analysis of energy prices and flows is

the cost of the energy productivity gains in non-energy production—which gains again show in the comparison of the trajectories of potential output and firms’ energy consumptions. In KLEM-CHN, this cost flows from the assumption of a nested-CES structure to non-energy production (see section 3.2). Energy enters this structure at a point where it trades off with the value-added composite of capital and labour. Consequently, some level of ‘autonomous energy efficiency improvement’ (AEEI) must be forced to compensate for the decrease of energy intensity described by China-MAPLE (see Equation 4 of Annex A), lest this decrease would come at a disproportionate value-added cost. We calibrate the trajectory of AEEI as that required to compensate exactly the decrease of energy consumption of the BAU scenario under the condition of potential growth realising. One consequence is that the value-added intensity of (non-energy) output is going to increase if ever BAU growth supersedes its potential from efficient-labour increases only, as energy-expense trajectories suggest it could. Another consequence is that the sharp decrease of the energy intensity of (non-energy) output from BAU to DDP is going to come at some value-added cost.

Macroeconomic trajectories traced by KLEM-CHN after convergence with the above MAPLE data confirm our intuition that BAU GDP growth could supersede that of efficient labour (compare Figure 3 to Figure 7). The 681% increase of GDP over 40 years translates in a 5.27% annual average substantially higher than the 4.94% average growth of efficient labour supply. As we explained above, this growth in excess to efficient labour growth implies some value-added costs to the MAPLE level of energy consumption by non-energy firms. Detailed KLEM results confirm that the 2050 value-added intensity of non-energy output is 1.5% higher than it was in 2010, to allow energy intensity decreasing 72.6% at that horizon—2.1 points further than the 70.5% drop inscribed in the AEEI calibrated on potential growth (see above).

Beyond the primary result of GDP growth, the sharp decrease of the investment rate inscribed in the slowing down of efficient labour increases (see Section 4.1 and Annex C2) strongly impacts the composition of GDP. With the trade balance and public consumption constant shares of GDP, it is households' consumption that benefits from decreased savings requirements—an expected effect of our Johansen closure. Our BAU scenario is thus one of steady activity growth sustained by strong energy efficiency improvements—for a major part but not entirely autonomous ones, with 'soft landing' of the current extremely high investment levels in favour of increased household consumption.

Figure 7 Macroeconomic trajectories of BAU and the difference between BAU and DDP scenarios



Source: converged KLEM-CHN China-MAPLE modelling. All reported series are deflated from own-price variations using specific chained Fisher indexes. The left-hand graph reports series indexed at 100 in 2010. The right-hand graph reports ratios of DDP series to their BAU equivalents.

KLEM-CHN projects DDP macroeconomics slightly less favourable than those of BAU (Figure 7, right panel). DDP GDP grows 670% over 40 years to land 1.3% below its BAU level. Average annual GDP growth recedes to 5.24%. The lag at end horizon is less than one year of growth though, and DDP GDP still performs above exogenous efficient labour gains. The absence of impact of DDP on the average price of energy to non-energy firms (see upper-left

panel of Figure 6) partly explains this low activity cost of deep decarbonisation. It allows energy expenses to decrease substantially and compensate partially the higher value-added costs of increased energy efficiency gains. Indeed, detailed results confirm that the value-added intensity of non-energy output at end horizon is significantly higher in DDP than in BAU, at 4.3% above 2010 level. Importantly, the contained increase and eventual decrease of households' energy prices allows households' consumption losses to align on GDP losses, thereby stabilising the structure of GDP expenditures other than investment across both scenarios.

5. Conclusion

The macroeconomic cost of climate mitigation is a critical policy question for policymakers and deserves tremendous research efforts. Our study contributes to answer that question by linking a macroeconomic TD model with a detailed BU model and applying the resulting hybrid model to explore energy-economy interactions in China's low-carbon transition. Our methodology benefits from two advantages. Firstly, it rests on an original energy-economy database combining energy and economic flows, thereby maximising the consistency and relevance of our TD and BU model coupling. Secondly, after the iterative exchange to convergence of variables common to the two numerical systems, it offers both a comprehensive, minute description of the Chinese energy system and an aggregate description of Chinese macroeconomics, in full consistency one with the other. .

Although most studies based on CGE models project high economic costs from deep decarbonisation of the energy system, our results suggest that those costs may be overestimated. The higher costs of CGE-based studies may be partly due to the biased policy consideration

focusing on carbon pricing policies and giving much less attention to efficiency measures and technology prescriptions in energy supply and end-use sectors. If the substitution between energy and other factors is not responding, the introduction of high energy or carbon prices may induce high costs to the economy. Our results highlight the importance of energy efficiency measures in industry sectors, not only as mitigation policies but also as hedging strategies against the macroeconomic impacts of low-carbon transition, particularly their costs in terms of increased value-added intensity of production. They also demonstrate how the electrification of personal mobility allows cutting down the costs of decarbonisation to households in the longer term by gradually phasing-out costly (imported) oil products consumptions.

Additionally, improvements of energy efficiency will lead to the reduction of fossil-fuel demand and hence to a lower price for fossil fuels, especially coal. The combination of those two effects leads to barely changed average energy prices for firms, which mitigates the investment costs of the low-carbon transition.

Compared with BAU, our DDP scenario consequently shows a small macroeconomic cost, equal to a lag of less than one year of growth in 2050. Taking into account the large expected health benefits from reduced air pollution could therefore turn the scenario comparison in favour of the DDP. Our results also show that the Chinese household sector needs careful scrutiny in a DDP scenario due to its growing energy expense in the near term, when relatively costly renewable electricity replaces both direct coal consumptions and consumption of coal-fired electricity. These increased energy expenses raise the concern of both appropriate policy design to alleviate their burden, and distributional effect among different income groups. However, the concern appears to be only transitory. Households' energy expenses in a DDP scenario pass below those under BAU after 2040, thanks to the phasing-out of costly (imported)

oil products consumptions via electrification of personal vehicles, and to efficiency gains in renewable electricity.

A natural prolongation of our research is the mobilisation of the IMACLIM model as a multisector generalisation of KLEM (see footnote 3), which will increase the connection points between our macroeconomic and bottom-up modelling, as well as allow refining our representation of the crowding-out of productive capital by addressing structural change issues. Additionally, an in-depth study on the electricity sector would provide further policy insights considering the importance of electrification processes on the evolution of both firms' and households' average energy prices. Yet another potential implementation of our modelling framework regards the exploration of 'LED' (low energy demand) scenarios, which have been highlighted as an alternative to significant negative emission technologies.

References

- Abrell, J., Rausch, S., 2016. Cross-country electricity trade, renewable energy and European transmission infrastructure policy. *Journal of Environmental Economics and Management* 79, 87–113. <https://doi.org/10.1016/j.jeem.2016.04.001>
- Anderson, S.T., Parry, I.W.H., Sallee, J.M., Fischer, C., 2011. Automobile Fuel Economy Standards: Impacts, Efficiency, and Alternatives. *Review of Environmental Economics and Policy* 5, 89–108.
- Bataille, C. et al., 2020 Net-zero deep decarbonization pathways in Latin America: Challenges and opportunities, *Energy Strategy Reviews*. Elsevier, 30, p. 100510. DOI 10.1016/J.ESR.2020.100510.
- Chen, W., 2005. The costs of mitigating carbon emissions in China: findings from China MARKAL-MACRO modeling. *Energy Policy* 33, 885–896.
- Chen, W., Wu, Z., He, J., Gao, P., Xu, S., 2007. Carbon emission control strategies for China: A comparative study with partial and general equilibrium versions of the China MARKAL model. *Energy* 32, 59–72. <https://doi.org/10.1016/J.ENERGY.2006.01.018>
- Combet, E., Gherzi, F., Lefevre, J., Le Treut, G. (2014). Construction of hybrid Input-Output tables for E3 CGE model calibration and consequences on energy policy analysis. GTAP resource 4524, Global trade Analysis Program, Purdue University, <https://www.gtap.agecon.purdue.edu/resources/download/6988.pdf>
- Cohen, S.M., Caron, J., 2018. The economic impacts of high wind penetration scenarios in the United States. *Energy Economics* 76, 558–573. <https://doi.org/10.1016/j.eneco.2018.10.023>

- Dai, H., Mischke, P., Xie, X., Xie, Y., Masui, T., 2016a. Closing the gap? Top-down versus bottom-up projections of China's regional energy use and CO2 emissions. *Applied Energy* 162, 1355–1373. <https://doi.org/10.1016/j.apenergy.2015.06.069>
- Dai, H., Xie, X., Xie, Y., Liu, J., Masui, T., 2016b. Green growth: The economic impacts of large-scale renewable energy development in China. *Applied Energy* 162, 435–449. <https://doi.org/10.1016/j.apenergy.2015.10.049>
- Dai, H., Xie, Y., Liu, J., Masui, T., 2018. Aligning renewable energy targets with carbon emissions trading to achieve China's INDCs: A general equilibrium assessment. *Renewable and Sustainable Energy Reviews* 82, 4121–4131. <https://doi.org/10.1016/j.rser.2017.10.061>
- Duan, H.-B., Zhu, L., Fan, Y., 2014. Optimal carbon taxes in carbon-constrained China: A logistic-induced energy economic hybrid model. *Energy* 69, 345–356. <https://doi.org/10.1016/j.energy.2014.03.022>
- European Environment Agency, 2013. *Adaptation in Europe: addressing risks and opportunities from climate change in the context of socio-economic developments*. Publ. Off. of the European Union, Luxembourg.
- Feng, S., and K. Zhang. 2018. Fuel-factor nesting structures in CGE models of China. *Energy Economics*, 75: 274–284, doi: <https://doi.org/10.1016/j.eneco.2018.08.030>.
- Fortes, P., Pereira, R., Pereira, A., Seixas, J., 2014. Integrated technological-economic modeling platform for energy and climate policy analysis. *Energy* 73, 716–730. <https://doi.org/10.1016/J.ENERGY.2014.06.075>
- Fortes, P., Simões, S., Seixas, J., Van Regemorter, D., Ferreira, F. (2013). Top-down and bottom-up modelling to support low-carbon scenarios: climate policy implications. *Climate Policy* 13:3, 285-304, DOI: 10.1080/14693062.2013.768919
- Fujimori, S., Oshiro, K., Shiraki, H., Hasegawa, T., 2019. Energy transformation cost for the Japanese mid-century strategy. *Nature Communications* 10. <https://doi.org/10.1038/s41467-019-12730-4>
- Gherzi, F., 2015. Hybrid Bottom-up/Top-down Energy and Economy Outlooks: A Review of IMACLIM-S Experiments. *Frontiers in Environmental Science* 3, 74. <https://doi.org/10.3389/fenvs.2015.00074>
- Helgesen, P.I., Lind, A., Ivanova, O., Tomasgard, A., 2018. Using a hybrid hard-linked model to analyze reduced climate gas emissions from transport. *Energy* 156, 196–212. <https://doi.org/10.1016/j.energy.2018.05.005>
- Helgesen, P.I., Tomasgard, A., 2018. From linking to integration of energy system models and computational general equilibrium models – Effects on equilibria and convergence. *Energy* 159, 1218–1233. <https://doi.org/10.1016/j.energy.2018.06.146>
- Hoffman, K.C., Jorgenson, D.W., 1977. Economic and Technological Models for Evaluation of Energy Policy. *The Bell Journal of Economics* 8, 444. <https://doi.org/10.2307/3003296>
- Hourcade, J.-C., Jaccard, M., Bataille, C., Gherzi, F., 2006. Hybrid modeling: new answers to old challenges introduction to the special issue of "the energy journal". *The Energy Journal* 1–11.
- ILO., 2014. *World of Work Report 2014: Developing with jobs*. International Labour Office.
- Intergovernmental Panel on Climate Change, Edenhofer, O. (Eds.), 2014. *Climate change 2014: mitigation of climate change: Working Group III contribution to the Fifth Assessment Report of the Intergovernmental Panel on Climate Change*. Cambridge University Press, New York, NY.

- Jacobsson, S., Lauber, V., 2006. The politics and policy of energy system transformation-- explaining the German diffusion of renewable energy technology. *Energy Policy* 34, 256–276.
- Johansen, L., 1960. *A Multi-sector Study of Economic Growth* - Leif Johansen - Google Livres. North-Holland Publishing Company.
- Krook-Riekkola, A., Berg, C., Ahlgren, E.O., Söderholm, P., 2017. Challenges in top-down and bottom-up soft-linking: Lessons from linking a Swedish energy system model with a CGE model. *Energy* 141, 803–817. <https://doi.org/10.1016/j.energy.2017.09.107>
- Labriet, M., Drouet, L., Vielle, M., Loulou, R., Kanudia, A., Haurie, A., 2015. Assessment of the Effectiveness of Global Climate Policies Using Coupled Bottom-Up and Top-Down Models. *SSRN Electronic Journal*. <https://doi.org/10.2139/ssrn.2580216>
- Le Treut, G., Combet, E., Lefèvre, J., Teixeira, A., Baudin, A., 2019. IMACLIM-Country platform: a country-scale computable general equilibrium model. <https://doi.org/10.5281/ZENODO.3403961>
- Liu, Y., Lu, Y., 2015. The Economic impact of different carbon tax revenue recycling schemes in China: A model-based scenario analysis. *Applied Energy* 141, 96–105. <https://doi.org/10.1016/j.apenergy.2014.12.032>
- Manne, A.S., 1977. *ETA-MACRO: A model of energy-economy interactions*. NASA STI/Recon Technical Report N 78, 26612.
- Martinsen, T., 2011. Introducing technology learning for energy technologies in a national CGE model through soft links to global and national energy models. *Energy Policy* 39, 3327–3336. <https://doi.org/10.1016/J.ENPOL.2011.03.025>
- Mu, Y., Wang, C., Cai, W., 2018. The economic impact of China’s INDC: Distinguishing the roles of the renewable energy quota and the carbon market. *Renewable and Sustainable Energy Reviews* 81, 2955–2966. <https://doi.org/10.1016/j.rser.2017.06.105>
- National Statistics Bureau. (2011) *China Input–output Tables 2010*, Available at: <http://data.stats.gov.cn//files/html/quickSearch/trcc/trcc05.html>
- National Statistics Bureau. (2015) *China Input-output Tables 2012*, China statistics press, Beijing.
- Proenca, S.A., Aubyn, M.S., 2009. A hybrid Top-down/Bottom-up model for energy policy analysis in a small open economy-the Portuguese case. Tech. rep. Discussion paper. url: <http://www4.fe.uc.pt/ceue>
- Rausch, S., Mowers, M., 2014. Distributional and efficiency impacts of clean and renewable energy standards for electricity. *Resource and Energy Economics* 36, 556–585. <https://doi.org/10.1016/j.reseneeco.2013.09.001>
- Remme, U. and Blesl, M. (2006). “Documentation of the TIMES-MACRO model”. Energy Technology Systems Analysis Programme (ETSAP). Downloaded from: <http://www.etsap.org>
- Rogelj, J., Luderer, G., Pietzcker, R.C., Kriegler, E., Schaeffer, M., Krey, V., Riahi, K., 2015. Energy system transformations for limiting end-of-century warming to below 1.5 °C. *Nature Climate Change* 5, 519–527. <https://doi.org/10.1038/nclimate2572>
- Soummane, S., Ghersi, F., Lefèvre, J., 2019. Macroeconomic pathways of the Saudi economy: The challenge of global mitigation action versus the opportunity of national energy reforms. *Energy Policy* 130, 263–282. <https://doi.org/10.1016/j.enpol.2019.03.062>
- Shen, K., and J. Whalley. 2013. *Capital-labor-energy substitution in nested CES production functions for China*. NBER Working Paper 19104, National Bureau of Economic Research, Cambridge, MA.
- Stern, N., Calderon, F., 2014. *Better growth, better climate: The new climate economy report*. The Global Commission on the Economy and Climate, New York (online: <http://newclimateeconomy.report/>).

- United Nations Development Programme, 2015. World population prospects: The 2015 revision. United Nations Econ Soc Aff 33, 1–66.
- Waisman, H., Bataille, C., Winkler, H., Jotzo, F., Shukla, P., Colombier, M., Buira, D., Criqui, P., Fischedick, M., Kainuma, M., La Rovere, E., Pye, S., Safonov, G., Siagian, U., Teng, F., Virdis, M.-R., Williams, J., Young, S., Anandarajah, G., Boer, R., Cho, Y., Denis-Ryan, A., Dhar, S., Gaeta, M., Gesteira, C., Haley, B., Hourcade, J.-C., Liu, Q., Lugovoy, O., Masui, T., Mathy, S., Oshiro, K., Parrado, R., Pathak, M., Potashnikov, V., Samadi, S., Sawyer, D., Spencer, T., Tovilla, J., Trollip, H., 2019. A pathway design framework for national low greenhouse gas emission development strategies. *Nature Climate Change* 9, 261–268. <https://doi.org/10.1038/s41558-019-0442-8>
- Wang, X., Teng, F., Yang, X., Wei, R.Q., 2017. Assessing the role of electricity storage in China's high renewable energy penetration future. *Enrgy Proced* 105, 4084–4089. <https://doi.org/10.1016/j.egypro.2017.03.865>
- Wene, C., 1996. Energy-economy analysis: Linking the macroeconomic and systems engineering approaches. *Energy* 21, 809–824. [https://doi.org/10.1016/0360-5442\(96\)00017-5](https://doi.org/10.1016/0360-5442(96)00017-5)
- Wu, Y.-H. et al. 2019 'Sectoral energy efficiency improvements in Taiwan: Evaluations using a hybrid of top-down and bottom-up models', *Energy Policy*. Elsevier, 132, pp. 1241–1255. DOI 10.1016/J.ENPOL.2019.06.043.
- Yang, X., Teng, F., 2018. The air quality co-benefit of coal control strategy in China. *Resour Conserv Recy* 129, 373–382. <https://doi.org/10.1016/j.resconrec.2016.08.011>
- Yang, X., Teng, F., 2017. Air quality benefit of China's mitigation target to peak its emission by 2030. *Climate Policy* 18, 99–110. <https://doi.org/10.1080/14693062.2016.1244762>
- Yang, X., Teng, F., Wang, X., Zhang, Q., 2017. System optimization and co-benefit analysis of China's deep de-carbonization effort towards its INDC target. *Enrgy Proced* 105, 3314–3319. <https://doi.org/10.1016/j.egypro.2017.03.754>
- Yang, X., Teng, F., Xi, X.Q., Khayrullin, E., Zhang, Q., 2018. Cost-benefit analysis of China's Intended Nationally Determined Contributions based on carbon marginal cost curves. *Appl Energ* 227, 415–425. <https://doi.org/10.1016/j.apenergy.2017.08.016>
- Zha, D., and D. Zhou. 2014. The elasticity of substitution and the way of nesting CES production function with emphasis on energy input. *Applied Energy*, 130: 793–798, doi: <https://doi.org/10.1016/j.apenergy.2014.01.093>.
- Zhang, D., Rausch, S., Karplus, V.J., Zhang, X., 2013. Quantifying regional economic impacts of CO2 intensity targets in China. *Energy Economics* 40, 687–701. <https://doi.org/10.1016/j.eneco.2013.08.018>

Annex A. KLEM-CHN formulary and reference tables

This Annex describes KLEM-CHN. For reference purposes, we list all variables and parameters below (**Erreur ! Source du renvoi introuvable.**), with the exception of a series of constant parameters calibrated on 2010 values, which we introduce with equations when necessary. The model counts 43 variables and 43 equations: equations 1, 14, 15, 20, 27, 29 and 32 cover both

sectors and thus count twice; equation 28 defines the prices of the IO matrix and thus counts 4 times. All equations prevail at each time period of the model, from 2010 (calibration year) to 2050 in 5-year steps. However, we drop time index t except when necessary. We index good-specific notations with subscript E for the aggregate energy good and subscript Q for the aggregate non-energy good.

Table A.1 KLEM-CHN notations

Notation	Description	Status
L	Labour endowment	1 parameter from ILO and UNPD (see Section 3.1)
K	Capital endowment	1 parameter calibrated in 2010 then from perpetual inventory (see Annex C)
ϕ	Labour productivity (index 1 in 2010)	1 parameter (see Section 3.1)
L_i	Volume of labour in good i production	2 variables
K_i	Capital stock in good i production	2 variables
KL	Value-added aggregate of K_Q and L_Q in the production of good Q	1 variable set at 1500 in 2010 without loss of generality.
KLE	Aggregate of value-added KL and energy E in the production of good Q	1 variable set at 1500 in 2010 without loss of generality.
E_i	Consumption of energy in the production of good i	2 parameters from China-MAPLE (see Annex D)
C_i	Consumption of good i by households	1 variable C_Q , 1 parameter C_E from China-MAPLE (see Annex D)
ϕ_E	Energy productivity in the production of KLE aggregate (index 1 in 2010)	1 parameter calibrated on natural growth and E_Q of the BAU scenario (see Equation 4)
G_Q	Consumption of good Q by public administrations	1 variable
I_Q	Immobilisation of good Q through investment	1 variable
X_i	Export of good i	1 variable X_Q , 1 parameter X_E from China-MAPLE (see C.3)
M_i	Import of good i	1 variable M_Q , 1 parameter M_E from China-MAPLE (see C.3)
Y_i	Output of good i	2 variables
S_i	Total (domestic and foreign) supply of good i	2 variables
α_{ij}	Intensity of good j in good i	3 variables $\alpha_{QQ}, \alpha_{EQ}, \alpha_{EE}$, 1 parameter α_{QE} from China-MAPLE (see C.3)
λ_i	Labour intensity of good i	1 variable λ_Q , 1 parameter λ_E from China-MAPLE (see C.3)
κ_i	Capital intensity of good i	1 variable κ_Q , 1 parameter κ_E from China-MAPLE (see C.3)
w	Wage	1 variable set at 100 in 2010 without loss of generality.
p_K	Rental price of capital	1 variable
p_{KL}	Price of value-added KL in good Q production	1 variable

p_{KLE}	Price of aggregate KLE in good Q production	1 variable
p_{Y_i}	Output price of good i	2 variables, p_{Y_Q} set at 1000 in 2010 without loss of generality.
p_{S_i}	Average price of good i supply	2 variables
p_{ij}	Price of good i used in the production of good j	4 variables
p_{C_i}	Price of good i for households	2 variables
p_{G_Q}	Price of good Q for public administrations	1 variable
p_{I_Q}	Price of good Q for investment	1 variable
p_{X_i}	Export price of good i	1 variable p_{X_Q} , 1 parameter p_{X_E} from China-MAPLE (see C.3)
p_{M_i}	Import price of good i	1 parameter p_{M_Q} price of the numéraire M_Q , set at 1000 in 2010 without loss of generality 1 parameter p_{M_E} from China-MAPLE (see C.3)
CPI	Consumer Price Index (chained Fisher index)	1 variable
MPI	Import Price Index (chained Fisher index)	1 variable
u	Unemployment rate	1 variable (constant per Equation 19)
GDP	Gross Domestic Product	1 variable
B	Trade balance value	1 variable
α_{KL}	Coefficient of K_Q in the KL CES function	1 parameter (472.5) calibrated in 2010
β_{KL}	Coefficient of L_Q in the KL CES function	1 parameter (758.3) calibrated in 2010
σ_{KL}	Elasticity of substitution between K_Q and L_Q in KL	1 parameter (0.4) from Okagawa and Ban (2008)
α_{KLE}	Coefficient of KL in the KLE CES function	1 parameter (0.8399) calibrated in 2010
β_{KLE}	Coefficient of $\alpha_{EQ} Y_Q$ in the KLE CES function	1 parameter (0.1957) calibrated in 2010
σ_{KLE}	Elasticity of substitution between KL and $\alpha_{EQ} Y_Q$	1 parameter (0.6) from Okagawa and Ban (2008)
α_Y	Coefficient of KLE in the Y_Q CES function	1 parameter ($5.013 \cdot 10^{-4}$) calibrated in 2010
β_Y	Coefficient of $\alpha_{QQ} Y_Q$ in the Y_Q CES function	1 parameter (0.3289) calibrated in 2010
σ_Y	Elasticity of substitution between KLE and $\alpha_{QQ} Y_Q$ in Y_Q	1 parameter (0.4) from Okagawa and Ban (2008)
σ_{wu}	Elasticity of real wage to the unemployment rate	1 parameter (-0.1) from Blanchflower and Oswald (2005)
σ_{Mp}	Elasticity to relative prices of the share of imports in total non-energy supply	1 parameter (0.92) from Aziz and Li (2008) (see Equation 10)
σ_{Xp}	Elasticity to relative prices of the non-energy export trend	1 parameter (1.55) from Aziz and Li (2008) (see Equation 11)
δ	Depreciation rate of the capital stock	1 parameter (0.096) from Zhang et al. (2004).
s_G	Ratio of public expenditure to GDP	1 parameter (0.1277) calibrated in 2010
s_I	Ratio of investment to GDP	1 parameter calibrated on the potential growth and depreciation rates assumptions (see Section C.2)
τ_{ST_i}	Sales tax on good i sales	2 parameters ($3.333 \cdot 10^{-2}$, $3.333 \cdot 10^{-2}$) calibrated in 2010
τ_{Y_i}	Output tax on good i production	2 parameters ($3.333 \cdot 10^{-2}$, $3.333 \cdot 10^{-2}$) calibrated in 2010
$\tau_{MS_{ij}}$	Specific margin on good i sales to good j production	2 parameters $\tau_{MS_{Qi}}$ calibrated in 2010 (nil), 2 parameters $\tau_{MS_{Ei}}$ from China-MAPLE (see C.3)

τ_{MSC_i}	Specific margin on good i sales to households	1 parameter τ_{MSC_Q} calibrated in 2010 (nil), 1 parameter τ_{MSC_E} from China-MAPLE (see C.3)
τ_{MSX_i}	Specific margin on good i exports	1 parameter τ_{MSX_Q} calibrated in 2010 (nil) 1 variable τ_{MSX_E}

A.1 Production

Trade-offs in the production of the energy good are exogenous assumptions flowing from the China-MAPLE model (see Section 2.3 and Annex D). The only required equation is the breakdown of primary energy inputs into energy transformation—the equation holds for the non-energy sector too:

$$E_i = \alpha_{Ei} Y_i \quad (1)$$

Non-energy production follows a “production tree” of nested CES functions (Figure A.1).⁶

⁶ Our choice of ‘KL-E’ rather than ‘KE-L’ nesting reflects the recommendation of van der Werf (2008) and the most common practice for both China and other country models. Feng and Zhang (2018) advocate ‘KE-L’ nesting in the case of China only because they assess several estimations collectively, whereas their best estimation of ‘KL-E’ nesting performs slightly better than their best estimation of ‘KE-L’ nesting.

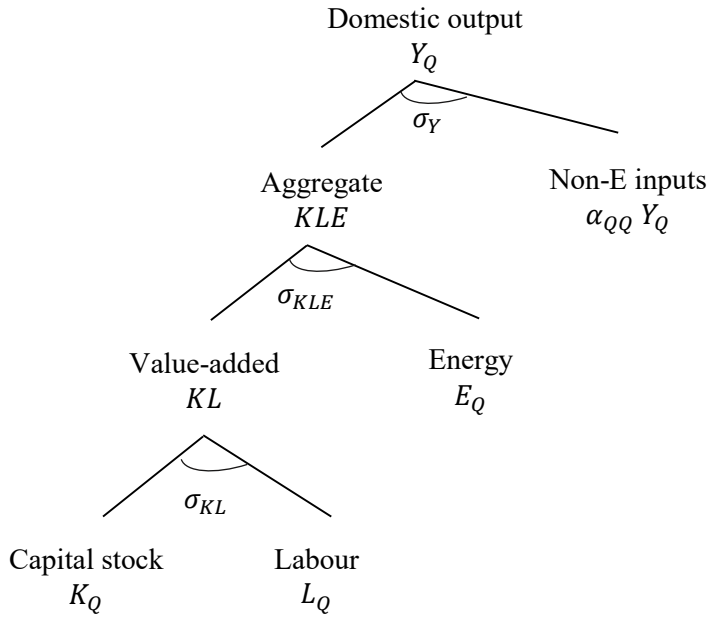


Figure A.1 Production structure of the non-energy good

At the foot of the tree, capital and labour trade off with a constant σ_{KL} elasticity of substitution to form a KL aggregate. The mobilized quantity of labour L_Q is augmented by a productivity factor ϕ : $KL = (\alpha_{KL} K_Q^{\rho_{KL}} + \beta_{KL} (\phi L_Q)^{\rho_{KL}})^{\frac{1}{\rho_{KL}}}$, with here and elsewhere, for convenience, $\rho_i = \frac{\sigma_i - 1}{\sigma_i}$. Facing prices p_K and p_L , cost minimization induces

$$L_Q = \frac{1}{\phi} \left(\frac{\phi \beta_{KL}}{p_L} \right)^{\sigma_{KL}} \left(\alpha_{KL}^{\sigma_{KL}} p_K^{1-\sigma_{KL}} + \beta_{KL}^{\sigma_{KL}} \left(\frac{p_L}{\phi} \right)^{1-\sigma_{KL}} \right)^{-\frac{1}{\rho_{KL}}} KL \quad (2)$$

$$K_Q = \left(\frac{\alpha_{KL}}{p_K} \right)^{\sigma_{KL}} \left(\alpha_{KL}^{\sigma_{KL}} p_K^{1-\sigma_{KL}} + \beta_{KL}^{\sigma_{KL}} \left(\frac{p_L}{\phi} \right)^{1-\sigma_{KL}} \right)^{-\frac{1}{\rho_{KL}}} KL \quad (3)$$

Higher up the tree, aggregate factor KL (value-added) and energy E_Q again trade off with a constant σ_{KLE} elasticity of substitution to form a KLE aggregate. However, E_Q is forced following China-MAPLE results (see Section 3.3 and Annex D) at levels much lower than potential growth (the growth of efficient labour ϕL), even in business-as-usual scenarios. Accommodating such intensity drops under standard values of σ_{KLE} would result in implausible

increases of the required KL intensity. To redress this bias, we introduce autonomous efficiency gains to E_Q (i.e., autonomous energy efficiency improvements AEEI) in the form of productivity gains ϕ_E . The corresponding $KLE = (\alpha_{KLE} KL^{\rho_{KLE}} + \beta_{KLE} (\phi_E E_Q)^{\rho_{KLE}})^{\frac{1}{\rho_{KLE}}}$ yields:

$$KL = \left(\frac{KLE^{\rho_{KLE}}}{\alpha_{KLE}} - \frac{\beta_{KLE}}{\alpha_{KLE}} (\phi_E E_Q)^{\rho_{KLE}} \right)^{\frac{1}{\rho_{KLE}}} \quad (4)$$

We calibrate ϕ_E in such a way that $\phi_E E_Q$ ('efficient E_Q ' or the actual energy service rendered by E_Q) grows apace with natural growth in business-as-usual (BAU) conditions, i.e. we make the assumption that the energy efficiency gains of the non-energy sector in BAU conditions do not require increased value-added expenses. This will define the value-added costs of the increased energy-consumption cuts of any scenario more ambitious than BAU.

On the tier immediately above, the KLE aggregate and non-energy input $\alpha_{QQ} Y_Q$ trade off with a constant σ_Y elasticity of substitution to form domestic output Y_Q . Facing prices p_{KLE} and p_{QQ} , cost minimization induces

$$KLE = \left(\frac{\alpha_Y}{p_{KLE}} \right)^{\sigma_Y} \left(\alpha_Y^{\sigma_Y} p_{KLE}^{1-\sigma_Y} + \beta_Y^{\sigma_Y} p_{QQ}^{1-\sigma_Y} \right)^{-\frac{1}{\rho_Y}} Y_Q \quad (5)$$

$$\alpha_{QQ} Y_Q = \left(\frac{\beta_Y}{p_{QQ}} \right)^{\sigma_Y} \left(\alpha_Y^{\sigma_Y} p_{KLE}^{1-\sigma_Y} + \beta_Y^{\sigma_Y} p_{QQ}^{1-\sigma_Y} \right)^{-\frac{1}{\rho_Y}} Y_Q \quad (6)$$

We set σ_{KL} at 0.4, σ_{KLE} at 0.6 and σ_Y at 0.4 as rough averages of the sectoral elasticities computed by Okagawa and Ban (2008). We refrain from using published Chinese estimates of σ_{KL} and σ_{KLE} because the available literature (Feng and Zhang, 2018; Zha and Zhou, 2014; Shen and Whalley, 2013; Su et al., 2012) considers production functions further from our own than that of Okagawa and Ban, typically disregarding secondary non-energy inputs ('materials') and working on value-added rather than total output.

A.2 Final consumption and investment

Household consumption of energy C_E is exogenous (see Annex D) while household consumption of the non-energy good C_Q adjusts to close the model considering the domestic savings demand resulting from the investment and trade balance assumptions ('Johansen' closure, see Section 3.2).

Public spending $p_{G_Q} G_Q$ is a constant share s_G of GDP (public spending in energy goods is zero by national accounting convention):

$$p_{G_Q} G_Q = s_G GDP \quad (7)$$

with GDP defined on the expenditure side as

$$GDP = \sum_{i=E,Q} p_{C_i} C_i + p_{G_Q} G_Q + p_{I_Q} I_Q + \sum_{i=E,Q} p_{X_i} X_i - \sum_{i=E,Q} p_{M_i} M_i \quad (8)$$

Investment expenses $p_{I_Q} I_Q$ are an exogenous ratio s_I of GDP (investment in energy goods is nil):

$$p_{I_Q} I_Q = s_I GDP \quad (9)$$

See Annex C.2 for the calibration of the investment path.

A.3 International trade

Energy imports and exports M_E and X_E are exogenous, dictated by China-MAPLE results. For the non-energy good, the share of imports M_Q in total supply S_Q has a σ_{M_p} elasticity to terms-of-trade:

$$\frac{M_Q}{S_Q} = A_M \left(\frac{p_{Y_Q}}{p_{M_Q}} \right)^{\sigma_{M_p}}, \quad (10)$$

with A_M one constant calibrated on 2010 data. Similarly, the exported share of total supply follows:

$$\frac{X_Q}{S_Q} = A_X \left(\frac{p_{X_Q}}{p_{M_Q}} \right)^{\sigma_{X_p}}. \quad (11)$$

with A_X one constant calibrated on 2010 data. We set σ_{M_p} at 0.92 and σ_{X_p} at 1.5 (Aziz and Li, 2008). The trade balance B is:

$$B = \sum_{i=E,Q} p_{X_i} X_i - p_{M_i} M_i \quad (12)$$

It is exogenous in the sense that its share to GDP maintains at a constant A_B ratio (calibrated on 2010 data) via endogenous adjustments of the real effective exchange rate (the ratio of the CPI to the foreign price index, which is not computed):

$$\frac{B}{GDP} = A_B \quad (13)$$

A.4 Market clearings

Market balance for each good i stems from the definitions of total domestic supply S_i seen from the use and resource sides:

$$S_i = \sum_{j=E,Q} \alpha_{ij} Y_j + C_i + G_i + I_i + X_i, \quad (14)$$

$$S_i = Y_i + M_i. \quad (15)$$

On the labour market, the unemployment rate is forced at its calibration-year level A_u :

$$u = A_u. \quad (16)$$

Market balance is:

$$(1 - u) L = L_Q + L_E. \quad (17)$$

The wage w adjusts to meet this constraint. This amounts to perfect market specification.⁷

In the non-energy sector, labour consumption and output are conventionally related via labour intensity:

$$L_Q = \lambda_Q Y_Q \quad (18)$$

Labour mobilised in the energy sector L_E , whose intensity λ_E derives from China-MAPLE (see Annex D) benefits the same productivity gains as non-energy labour L_Q . Thus:

$$\phi L_E = \lambda_E Y_E \quad (19)$$

On the capital market, demands of the two productions balance out capital endowment K :

$$\sum_{i=E,Q} K_i = K \quad (20)$$

With for the non-energy sector, similarly to labour:

$$K_Q = \kappa_Q Y_Q \quad (21)$$

Capital mobilised in the production of the energy good K_E is constrained not to contract faster than the depreciation rate δ fixed at 4%:

$$K_{E,t} = \max \left((1 - \delta) K_{E,t-1}; \kappa_E Y_E \right). \quad (22)$$

This constraint was devised for the exploration of the Saudi economy's massive energy sector at annual time steps. It is inoperative in the fast growing context of the Chinese economy modelled at five-year intervals.

⁷ We keep u explicit for further explorations with equilibrium unemployment like those of Soummane et al. (2019) on Saudi Arabia.

A.5 Producer and consumer prices

Primary factor payments w the wage and p_K the price of capital rental are common to both sectors. They adjust according to their market balances.

The price of the KL aggregate p_{KL} is the canonical function (KL being a CES product of K and L) of prices p_K and p_L and of the elasticity of substitution of the two inputs σ_{KL} :

$$p_{KL} = \left(\alpha_{KL}^{\sigma_{KL}} \left(\frac{p_K}{\Omega_K} \right)^{1-\sigma_{KL}} + \beta_{KL}^{\sigma_{KL}} \left(\frac{w}{\Omega_L \phi} \right)^{1-\sigma_{KL}} \right)^{\frac{1}{1-\sigma_{KL}}} \quad (23)$$

Contrary to p_{KL} , p_{KLE} the price of the KLE aggregate specific to non-energy production cannot be defined as a function of prices p_{KL} and p_{EQ} and of the elasticity of substitution of the two inputs σ_{KLE} , because exogenously setting E_Q in the KLE aggregate truncates the underlying cost-minimisation programme. Consequently, p_{KLE} is rather inferred from the simple accounting equation:

$$p_{KLE} KLE = p_{KL} KL + p_{EQ} E_Q \quad (24)$$

The producer price of the non-energy good p_{YQ} is again the canonical CES price of the KLE aggregate and the non-energy input to production $\alpha_{QQ} Y_Q$, to which a constant *ad valorem* output tax τ_{YQ} as well as a constant rent mark-up τ_{RQ} , are added:

$$p_{YQ} \left(1 - \tau_{YQ} - \tau_{RQ} \right) = \left(\alpha_Y^{\sigma_Y} p_{KLE}^{1-\sigma_Y} + \beta_Y^{\sigma_Y} p_{QQ}^{1-\sigma_Y} \right)^{\frac{\rho_Y-1}{\rho_Y}} \quad (25)$$

For the energy good, the producer price is simply the sum of production costs:

$$p_{YE} = p_{QE} \alpha_{QE} + p_{EE} \alpha_{EE} + w \lambda_E + p_K \kappa_E + \tau_{RE} p_{YE} + \tau_{YE} p_{YE} \quad (26)$$

The import prices of both goods are exogenous: p_{MQ} is constant because the imported non-energy good is the chosen numéraire of the model; and p_{ME} follows an exogenous trajectory inferred from China-MAPLE (Annex D).

The average supply price of good i , p_{S_i} , flows from:

$$p_{S_i} S_i = p_{Y_i} Y_i + p_{M_i} M_i \quad (27)$$

Turning to purchasers' prices, the price of good i for the production of good j , p_{ij} , is equal to the supply price of good i augmented from agent-specific margins $\tau_{MS_{ij}}$ and *ad valorem* sales taxes τ_{ST_i} :

$$p_{ij} = p_{S_i} (1 + \tau_{MS_{ij}}) (1 + \tau_{ST_i}) \quad (28)$$

The consumer prices of households, public administrations, the investment good and exports are constructed similarly but drop the unnecessary specific margins when energy is not concerned (public consumption, investment), as well as sales taxes as regards exports:

$$p_{C_i} = p_{S_i} (1 + \tau_{MSC_i}) (1 + \tau_{ST_i}) \quad (29)$$

$$p_{G_Q} = p_{S_Q} (1 + \tau_{ST_i}) \quad (30)$$

$$p_{I_Q} = p_{S_Q} (1 + \tau_{ST_i}) \quad (31)$$

$$p_{X_i} = p_{S_i} (1 + \tau_{MSX_i}) \quad (32)$$

In the case of the energy good, the specific margin τ_{MSX_E} endogenously adapts to accommodate the exogenous p_{X_E} prescription (see Annex D). The consumer and import price indexes *CPI* and *MPI* are computed as chained indexes, i.e. from one period to the next, according to Fisher's formula:

$$CPI_t = CPI_{t-1} \sqrt{\frac{\sum p_{Ci,t} C_{i,t-1}}{\sum p_{Ci,t-1} C_{i,t-1}} \frac{\sum p_{Ci,t} C_{i,t}}{\sum p_{Ci,t-1} C_{i,t}}} \quad (33)$$

$$MPI_t = MPI_{t-1} \sqrt{\frac{\sum p_{Mi,t} M_{i,t-1}}{\sum p_{Mi,t-1} M_{i,t-1}} \frac{\sum p_{Mi,t} M_{i,t}}{\sum p_{Mi,t-1} M_{i,t}}} \quad (34)$$

Annex B.

A hybrid energy/economy CHN dataset

Bringing into consistency energy and national accounting data into a hybrid energy/economy dataset can have significant bearing on energy/economy modelling results (Combet *et al.*, 2014). For that reason, it should be a prerequisite to proper bottom-up/top-down coupling experiments lest BU-derived variations apply to flawed cost, budget or trade balance shares. This Annex summarises our procedure of building a hybrid energy/economy dataset for China and provides the resulting data in the 2-sector format of KLEM. Because this format is shared with that of KLEM-KSA, its exposition is repeated from Soummane et al. (2019), Annex C. provide another application of our hybridising procedure in the case of India.

Our hybridizing procedure consists in crossing national accounting input-output data on energy expenses, energy balance data on energy flows and energy market price data. In case of discrepancy beyond some tolerance level, we prioritise the flow and price data from energy statistics and substitute the resulting expense estimate to the corresponding national accounting data. We adjust all non-energy elements of the cost structures of energy suppliers to rebalance the uses and resources of energy goods. We aggregate all corrections of uses and resources in a separate sector, which therefore blends actual non-energy activities of energy firms (unaccounted for in supply tables) and mere statistical errors. In multisector applications (Lefèvre, 2016; Le Treut, 2017; Gupta et al., 2019a, 2019b) we aggregate this correction sector to service activities. When working on KLEM format we necessarily aggregate it to the non-energy sector.

In the case of China, we performed the procedure on the 42-sector input-output (IO) matrix of 2010 (National Statistics Bureau,2011) with information from the more disaggregated 135-sector IO matrix of 2012 (National Statistics Bureau,2015), the energy balance of 2010 and sets

of energy prices from various sources including the *China Price Statistics Yearbook 2011*, the *China Cement Yearbook 2011*, the *World Economic Operation Report 2011-2012*, the *China Yearbook 2011*, the *China Customs Statistical Yearbook 2011*, the *Handbook of Brief Energy Data 2016*, the International Energy Agency and the ENERDATA Company.

The first step of our data treatment procedure was to disaggregate the 42-sector input-output table (IOT) of year 2010 into 135 sectors, by replicating the sub-sectoral shares of the available 135-sector table of year 2012. We then aggregated the resulting table into 44 sectors (15 of which unchanged from the initial 42-sector matrix) maximising compatibility with the energy-flow disaggregation of the energy balance. Additionally, for lack of direct Chinese sources, we turned to the GTAP database to separate oil and gas extraction into its two components. We also used the energy consumptions of the two GTAP sectors to disaggregate the energy consumptions of ‘oil and gas extraction’ in the energy balance. We aggregated gas extraction to gas distribution to form one single natural gas supplying activity.

The second step of our data treatment was to cross market price statistics with energy flows to obtain adjusted energy expenses. When lacking price statistics, we constructed price estimates as deviations from the average market price of the relevant energy carrier, taking account of the reported IOT expenses and energy flows. More precisely, if p_{iot} the price resulting from division of the IOT expense by the energy balance flow is above $p_{av,iot}$ the average p_{iot} across end-users of the same energy carrier, we defined the estimated price p_{est} as

$$p_{est} = p_{av,stat} + \frac{p_{iot} - p_{av,iot}}{p_{max,iot} - p_{av,iot}} 0.25 p_{av,stat}$$

with $p_{av,stat}$ the average of available market price statistics for the same energy carrier and $p_{max,iot}$ the maximum p_{iot} across end-users of the same energy carrier. Conversely, if p_{iot} is below $p_{av,iot}$ we defined p_{est} as

$$p_{est} = p_{av,stat} + \frac{p_{av,iot} - p_{iot}}{p_{av,iot} - p_{min,iot}} 0.25 p_{av,stat}$$

with $p_{min,iot}$ the minimum p_{iot} across end-users of the same energy carrier.

The third step of our procedure was to substitute the adjusted energy expenses i.e. the products of the price statistics or estimated prices and of the energy flows, to the original energy expenses of our 44-sector IOT. We then adjusted non-energy inputs into energy sectors by replicating the ratio of non-energy inputs to energy inputs in the original IOT, taking account of the revised energy-input total. We also homothetically adjusted non-energy inputs into non-energy sectors to maintain the totals of intermediate inputs into all sectors.

The main difficulty in the procedure was the reconciliation of the perimeters and nomenclatures of national accounts and the energy balance. National accounts record commercial flows between economic residents and trade with foreign residents. The energy balance records physical energy flows, their trade, their transformations from primary form to secondary vectors and their final consumption by end-uses. Computing commercial flows from energy balance data therefore required treatment of power and heat autoproductions (which only appear through primary energy consumptions in national accounts) and of international bunkers (a geographic notion orthogonal to the administrative definition of the perimeter of national accounts). It also required disaggregating the road transport end-use between households' direct consumptions of vehicle fuels and those of firms, among which transport service suppliers.⁸

⁸ Combet *et al.* (2014) and Le Treut (2017) detail the hybridisation procedure in the case of France. The particulars of its implementation on China are available from the authors upon request.

Figure B.1 Hybrid dataset of 2010 China in KLEM-CHN 2-sector format

IOT, Billion RMB	Prod. Q	Prod. E	C	G	I	X	
Q uses	73 728	1 479	13 948	5 197	20 390	11 081	125 824
E uses	6 167	3 605	758	0	0	267	10 798
L net	18 087	1 014					
L taxes	448	36					
Y taxes	4 243	699					
K	13 831	1 401					
R	26	15					
M	8 927	2 008					
SM use in Q	0	1 606					
SM use in E	0	-1 614					
SM use in C	0	202					
SM use in G	0	0					
SM use in I	0	0					
SM use in X	0	106					
Sales T	367	240					
	125 824	10 798					

E flows, Mtce	Prod. Q	Prod. E	C	G	I	X	
E uses	2 028	2 357	247	0	0	74	4 707
Imports		566					
Output		4 141					

E prices, RMB/tce	Prod. Q	Prod. E	C	G	I	X
E uses	3 040	1 529	3 067	-	-	3 613
Imports		3 547				

“IOT” stands for Input-output table, “E” for Energy. Totals may not add up due to rounding.

The resulting IOT in billion renminbi (RMB) and satellite account of energy flows in million tons of coal-equivalent (Mtce) organise as follows (Figure B.1). In column, resources of the non-energy good Q and the energy good E build up from intermediate consumptions (Q or E uses), labour costs L, capital costs K, output taxes ‘Y taxes’, the rent on natural resources R, imports M, specific margins SM and net-of-subsidies ‘Sales taxes’. Specific margins on energy uses are calibrated as the difference between sales at prices inferred from the energy-flow account and sales at the average resource price p_{SE} (an average of output and import prices, see Annex A) augmented by net sales taxes. They allow modelling agent-specific prices (see

Equations 28 to 32 of Annex A) i.e. overcoming undesirable consequences of the uniform pricing standard, as Combet *et al.* (2014) demonstrated. All specific margins on Q uses are nil in the absence of any satellite account of physical flows that would point at agent-specific pricing.

In line, Q and E are used as inputs into productions, as consumption goods for households (C) and public administrations (G), as investment goods (I) or as exports (X). In the energy-flow account, the energy consumption of the non-energy sector ('E uses' in 'Prod Q') aggregates total final energy consumption net of households' consumption C, which proceeds from residential energy consumptions and a share of refined products consumptions for transportation purposes. The energy consumption of the energy sector ('E uses' in 'Prod E') aggregates commercial flows between energy firms.

By national accounting convention, the consumption of energy goods by public administrations is nil.⁹ Investment of energy goods is nil as well, once stock variations have been cancelled out by adjusting output. Exports (X) and imports (M) are close matches to their energy balance counterparts. The price of each energy use is specific thanks to specific margins SM (see above).

According to our hybrid dataset (Figure B.1), in 2010 the Chinese energy sector represents 18.4% of total imports and 8.0% of value-added, 5.3% of the output cost of non-energy supply and 5.2% of households' consumption budget. Before hybridisation, the corresponding indicators were 1.8% of total imports, 8.3% of value-added, 5.7% of the output cost of non-energy supply and 3.6% of households' consumption budget.

⁹ The consumption of public institutions is registered as intermediate consumption by the public services sector, which is aggregated to the non-energy good in our 2-sector dataset.

Annex C.

Calibration of KLEM-CHN capital dynamics

Capital accumulation of KLEM-CHN follows standard perpetual inventory specifications but with explicit accounting of year-to-year variations between the 5-year time steps of the model.

C.1 Calibration of the base-year capital stock

Our original hybrid energy/economy calibration data (see Annex B) lacks some estimate of the initial capital stock. Turning to statistics on such matter risks raising consistency issues with 2010 investment and the accumulation rule, leading to capital stock trajectories with trends diverging from efficient labour supply and thus to artificial relative abundance or scarcity of the capital stock—with ultimate impacts on the costs of more capital-intensive trajectories. Following Soummane et al. (2019), we rather define K_0 the base-year capital stock of KLEM-CHN as:

$$K_0 = I_{Q,0} \frac{1}{\delta + g_1}, \quad (35)$$

with δ the depreciation rate dividing the 2010 investment volume $I_{Q,0}$ to account for the amount of capital (δK) that will be retired at the end of 2010 and must therefore be replaced by $I_{Q,0}$; and g_1 the potential growth rate between 2010 and 2011, resulting from the combined growth of labour supply and labour productivity i.e. the growth of efficient labour. Dividing $I_{Q,0}$ by g_1 warrants that the 2011 capital stock resulting from 2010 investment grows apace with efficient labour.

C.2 Full-horizon calibration of investment rate dynamics

Starting from K_0 and $I_{Q,0}$, the standard accumulation rule defines the trajectory of the capital stock as

$$K_{y+1} = (1 - \delta) K_y + I_{Q,y} \quad (36)$$

with time subscripts y conveying that we keep track of this trajectory in yearly time steps in-between each of the 5-year intervals of KLEM-CHN. Our choice of a Johansen closure means to reflect the strongly planned nature of the Chinese economy. Similar to the savings rate dynamics under neoclassical closure, it requires some assumption on the investment rate dynamics. We calibrate these dynamics in such a manner that the capital stock grows at the same pace as efficient labour when (real) GDP also does. Notwithstanding the small discrepancies between the investment price index and the GDP price index, the year- y investment effort (share of GDP invested) $s_{I,y}$ should thus follow:

$$s_{I,y} = s_{I,0} \left(\frac{1+g_{y+1}}{1+g_y} - (1 - \delta) \right) \frac{K_0}{I_{Q,0}} \quad (37)$$

With g_y the potential growth rate between year 0 and year y —defined as the growth rate of efficient labour $\frac{\phi L_y}{L_0}$ in KLEM notations. This equation holds at each 5-year interval as well to define the investment effort effectively enforced in KLEM-CHN.

C.3 5-year dynamics of the capital stock

KLEM-CHN computes capital stocks in 5-year time steps t as

$$K_{t+1} = (1 - \delta)^5 K_t + A_t I_t \quad (38)$$

where A_t is a multiplier of I_t that means to approximate the effect of investment growth between t and $t + 1$ on K_{t+1} , duly accounting for depreciation. We compute A_t in the case when potential growth realises, where it is analytically tractable as a function of the depreciation rate δ and of potential growth rates g :

$$A_t = \sum_{i=0}^4 (1 - \delta)^{4-i} \frac{g_{y+i+1} + \delta}{g_{y+1} + \delta} \quad (39)$$

where year y is time period t and years $y + 1$ to $y + 3$ are the 3 years between period t and period $t + 1$.

Annex D. KLEM-CHN parameter trajectories inferred from China-MAPLE

KLEM-CHN parameter trajectories inferred from China-MAPLE cover 5 energy volumes, 2 prices of energy trade, 3 margins on energy sales and one deviation from base year values identically affecting the calibrated non-energy, labour and capital intensities of energy supply (α_{QE} , λ_E and κ_E in KLEM-CHN notations).

The 5 energy volumes are the 4 non-nil uses of energy of KLEM-CHN's satellite account of energy flows (see Annex B)—inputs to transformation by energy firms E_E , final consumptions of non-energy firms E_Q , final consumptions of households C_E and exports X_E —as well as energy imports M_E . Together, these five flows define energy ‘output’ Y_E in the input-output sense of KLEM-CHN, as the difference between the sum of uses and imports $E_E + E_Q + C_E + X_E - M_E$. For a given scenario, we compute the 5 flows at every five-year interval in China-MAPLE following a procedure of nomenclature and perimeter harmonization very similar to that producing KLEM-CHN's hybrid calibration data. One significant difference is that China-MAPLE only tracks net imports of energy goods, which we must disaggregate between gross

imports and exports. We do so by assuming that, for each energy good, the two trade flows evolve inversely from their base-year (2010) levels, which we know from the Chinese energy balance.

We also easily compute at every five-year interval p_{XE} and p_{ME} the prices of aggregate energy exports and imports as the weighted averages of the prices of all exported and imported energy commodities in China-MAPLE.

The margins on domestic energy sales $\tau_{MS_{EE}}$, $\tau_{MS_{EQ}}$ and τ_{MSC_E} and δ_E the scalar to base-year values of the 3 non-energy intensities of energy supply (not an explicit KLEM-CHN parameter) flow from the complex procedure described at the end of Section 3.3. Let us illustrate this procedure. Keeping on using KLEM-CHN notations (see Annex A) and indexing calibration (2010) values with 0 subscripts, at each time t of China-MAPLE trajectory, our first step is to compute a ‘KLEM-BU’ energy output price building on constant non-energy costs and taxes, as:

$$p_{YE,t}^{BU} = \frac{p_{QE,0} \alpha_{QE,0} + p_{EE,t} \alpha_{EE,t} + w_0 \lambda_{E,0} + p_{K,0} \kappa_{E,0}}{1 - \tau_{RE,0} p_{YE,t}^{BU} - \tau_{YE,0} p_{YE,t}^{BU}} \quad (40)$$

which is simply the sum of unit input costs into energy production, Equation 26 of KLEM. The only elements of this cost structure evolving through time are the energy intensity of energy supply (transformation) α_{EE} and its market price p_{EE} —for the sake of readability we drop time indexes henceforth. Both are derived from China-MAPLE at each time step, α_{EE} as the ratio of the total energy input into energy supply E_E and of energy ‘output’ in the input-output sense of KLEM-CHN Y_E ; p_{EE} as the weighted average of the shadow prices of the energy flows aggregating in E_E .

Our second step is to average p_{YE}^{BU} and p_{ME} the China-MAPLE-derived price of energy imports at same time t , into the ‘KLEM-BU’ supply price p_{SE}^{BU} . We do this taking account of what

China-MAPLE indicates on the aggregate balance of imports and domestic output into supply at time t , following Equation (15) of KLEM-CHN:

$$p_{SE}^{BU} = \frac{Y_E}{Y_E + M_E} p_{YE}^{BU} + \frac{M_E}{Y_E + M_E} p_{ME} \quad (41)$$

Still following KLEM-CHN equations, we then build ‘KLEM-BU’ domestic energy market prices as:

$$\forall j \in \{Q, E\} \quad p_{Ej}^{BU} = p_{SE}^{BU} (1 + \tau_{MS_{Ej},0}) (1 + \tau_{ST_{E,0}}), \quad (42)$$

$$p_{CE}^{BU} = p_{SE}^{BU} (1 + \tau_{MSC_{E,0}}) (1 + \tau_{ST_{E,0}}), \quad (43)$$

as well as the ‘KLEM-BU’ energy export price:

$$p_{XE}^{BU} = p_{SE}^{BU} (1 + \tau_{MS_{XE,0}}) \quad (44)$$

Our third step is to identify which of these four ‘KLEM-BU’ prices is the closest from the corresponding China-MAPLE prices including the very p_{EE} governing their trajectories, and to compute the value of δ_E bridging the gap between this KLEM-BU price and its China-MAPLE counterpart. We renew the comparison at every time period. Let us assume that at some time period t the gap is smallest between p_{EQ}^{BU} and the average price of final energy consumption by firms inferred from China-MAPLE p_{EQ}^{MAPLE} , then δ_E at time t is the solution to :

$$\begin{aligned} & \frac{Y_E}{Y_E + M_E} \frac{(1 + \delta_E)(p_{QE,0} \alpha_{QE,0} + w_0 \lambda_{E,0} + p_{K,0} \kappa_{E,0}) + p_{EE} \alpha_{EE}}{1 - \tau_{RE,0} - \tau_{YE,0}} (1 + \tau_{MS_{EQ,0}}) (1 + \tau_{ST_{E,0}}) \\ & + \frac{M_E}{Y_E + M_E} p_{ME} (1 + \tau_{MS_{EQ,0}}) (1 + \tau_{ST_{E,0}}) = p_{EQ}^{MAPLE} \end{aligned} \quad (45)$$

where the values without 0 subscript Y_E , M_E , p_{EE} and α_{EE} are all inferred from time t China-MAPLE results similar to p_{EQ}^{MAPLE} .

The last stage of our procedure is to factor in the resulting δ_E in updated ‘KLEM-BU’ prices and to compute what adjustment of the specific margins allows aligning these updated ‘KLEM-BU’ prices on their China-MAPLE counterparts.

Annex references

- Aziz, J. and Li, X. (2008) ‘China’s changing trade elasticities’, *China and World Economy*, 16(3), pp. 1–21. doi: 10.1111/j.1749-124X.2008.00111.x.
- Combet, E. et al. (2014) Construction of hybrid Input-Output tables for E3 CGE model calibration and consequences on energy policy analysis. Available at: <https://www.gtap.agecon.purdue.edu/resources/download/6988.pdf>.
- Gupta, D., Ghersi, Frédéric, et al. (2019a) ‘Achieving sustainable development in India along low carbon pathways: Macroeconomic assessment’, *World Development*. Elsevier Ltd, 123, p. 104623. doi: 10.1016/j.worlddev.2019.104623.
- Gupta, D., Ghersi, Frederic, et al. (2019b) ‘Macroeconomic assessment of India’s development and mitigation pathways’, *Climate Policy*. Taylor & Francis, 0(0), pp. 1–21. doi: 10.1080/14693062.2019.1648235.
- Lefèvre, J. (2016) Hybridization challenges in energy-economy integrated models and representation of the low carbon transition - An application to the Brazilian case. Université Paris-Saclay - Ecole doctorale ABIES.
- Le Treut, G. (2017) Methodological proposals for hybrid modelling: consequences for climate policy analysis in an open economy (France). École Doctorale Ville, Transports et Territoires (VTT) - ED 528. Available at: <https://hal.archives-ouvertes.fr/tel-01707559> (Accessed: 07 July 2020).
- National Statistics Bureau. (2011) China Input-output Tables 2010, Available at: <http://data.stats.gov.cn//files/html/quickSearch/trcc/trcc05.html>
- National Statistics Bureau. (2015) China Input-output Tables 2012, China statistics press, Beijing.
- Okagawa, A. and Ban, K. (2008) ‘Estimation of substitution elasticities for CGE models’, *Discussion Papers in Economics*, pp. 1–18. Available at: http://118.151.132.36/jp/workshop/080225/03_report5_Okagawa.pdf (Accessed: 14 April 2014).
- Shen, K. and Whalley, J. (2013) “Capital-labor-energy substitution in nested CES production functions for China.” NBER Working Paper 19104, National Bureau of Economic Research, Cambridge, MA.
- Soummane, S., Ghersi, F. and Lefèvre, J. (2019) ‘Macroeconomic pathways of the Saudi economy: The challenge of global mitigation action versus the opportunity of national energy reforms’, *Energy Policy*. Elsevier Ltd, 130(March), pp. 263–282. doi: 10.1016/j.enpol.2019.03.062.
- Su, X., W. Zhou, K. Nakagami, H. Ren, and H. Mu. 2012. “Capital stock-labor-energy substitution and production efficiency study for China.” *Energy Economics*, 34 1208–1213, doi: <http://dx.doi.org/10.1016/j.eneco.2011.11.002>.

- Van der Werf, E. (2008) 'Production functions for climate policy modeling: An empirical analysis', *Energy Economics*, 30(6), pp. 2964–2979. doi: 10.1016/j.eneco.2008.05.008.
- Zhang J, Wu G, Zhan J. (2004) The estimation of China's provincial capital stock: 1952–2000. *Econ Res J* 10:35–44 (in Chinese).