



**HAL**  
open science

# Measuring information loss when modeling sick leave with weight mixture models

Margaux Thorez

► **To cite this version:**

Margaux Thorez. Measuring information loss when modeling sick leave with weight mixture models. 2022. hal-03894573v2

**HAL Id: hal-03894573**

**<https://hal.science/hal-03894573v2>**

Preprint submitted on 13 Aug 2024

**HAL** is a multi-disciplinary open access archive for the deposit and dissemination of scientific research documents, whether they are published or not. The documents may come from teaching and research institutions in France or abroad, or from public or private research centers.

L'archive ouverte pluridisciplinaire **HAL**, est destinée au dépôt et à la diffusion de documents scientifiques de niveau recherche, publiés ou non, émanant des établissements d'enseignement et de recherche français ou étrangers, des laboratoires publics ou privés.

Copyright

---

# Measuring information loss when modeling sick leave with weight mixture models

---

Thorez, M.<sup>1,2</sup>

*1 Aix Marseille Univ, CNRS, Centrale Marseille, I2M, Marseille, France*

*2 AOPS Conseil, Paris, France*

## Abstract

We consider a problem in actuarial sciences, in which we have  $M$  insurance companies (samples) and  $K$  groups of insured persons. We want to model sick leave for each group. However, the group label of each observation is not defined with certainty for confidential reasons. We assume that each insurance company can provide the proportion of each group in its database. In this case, we are going to compare two different Kaplan-Meier estimators for mixture models. We measure the information loss when modeling sick leaves with variable weight mixture models in censored duration models, comparing Ryzhov's and Maiboroda's methods, both using simulations and empirical data. The choice of the weights seems to have an impact on the quality of the estimation. We found that Ryzhov's estimator gives usually best results, especially in the case where the weights are quite close. But when the weights are further apart, it is the Maiboroda estimator that becomes the best, especially in the case of strong censorship. Using empirical data, the Maiboroda estimator also seems to give better results.

*Keywords* : mixture models, duration models, censored data, varying weights, sick leave

## 1 Introduction

Understanding the risks associated with sick leaves is very important for companies as well as for insurance organizations. Indeed, according to an IRDES paper [9], sick leave coverage plays an important health and economic role insofar as it allows individuals to have time to receive care and recover good health, while benefiting from the resources necessary to meet their basic needs. However, the drift away of sick leave creates additional costs that must be controlled. Modeling the duration of these leaves is therefore a central issue for good risk provisioning.

To analyse this actuarial data, it is recommended to have line-by-line data, with, for each leave that occurs, the start and end date of the sick leaves, the age and the average salary used (for the calculation of mathematical provisions), but also the socio-professional category and gender, to understand which populations are the most affected. However, these data are confidential and it can sometimes be difficult to access them, especially when they are not mandatory for the computation of the mathematical provisions.

Confidentiality protection and free information sharing are two major themes guiding data collection and dissemination, as explained by Duncan and Lambert [6]. To protect

privacy, one idea is to use  $\epsilon$ -differential privacy, where the true data is perturbed by the addition of a random noise generated according to a chosen distribution, as studied by Dwork et al. [7]. The authors said that the goal of a privacy-preserving database is to analyse the properties of a population while protecting the privacy of the individual contributors. Duchi et al. [5] also worked in the local differential privacy framework and studied the tradeoff between privacy guarantees and the utility of the resulting statistical estimators.

For our part, we have chosen to imagine that we have access to the data but not, for each individual, to his or her socio-professional category or gender. Indeed, we can imagine that for confidential reasons, an insurance company cannot disclose the exact label of each insured. However, we can suppose that we know the proportion of each group in the samples. Let us assume that we have data from two companies, A and B, with, for each, the proportion of men and women in the database transmitted. We can then create a mixture model similar to the one used by Maiboroda [10].

We are going to consider a problem in actuarial sciences in which we have  $M=2$  insurance companies (samples) and  $K=2$  groups of insured persons (differentiated for example by gender), and we want to determine the behaviour of each group without knowing the exact label of each insured person. For that, we are going to determine the survival functions, taking into account the fact that the data related to sick leaves are censored data. We will compare two duration models using Kaplan-Meier estimator for mixture models, and see their specificities depending on the censure.

This paper is organized as follows. Section 2 will be about our methodology, recalling the Kaplan-Meier duration model and the mixture models, and comparing Ryzhov [20] and Maiboroda [15] models. Section 3 will present different simulations results for continuous and discrete data before applying the models to an empirical data set in Section 4. Finally, we will discuss the results and possible improvements.

## 2 Model description

### 2.1 Duration model: Kaplan-Meier estimator

We are going to use the Kaplan-Meier [8] estimator for our duration model. It is a non-parametric estimator of the survival function that is used in the presence of censoring and truncation. It is characterized graphically by a decreasing step-wise curve, the points of discontinuity corresponding to the points where an event occurs, in this case the end of the sick leave of an individual. The Kaplan-Meier estimator is based on the estimation of instantaneous survival rates. When a sufficiently large sample is used, it approximates the true survival function in that population.

Let  $Y$  be a random variable taking values in a countable set  $\mathcal{T} = \{t_k, k \in I\}$ . In the case of censored data,  $Y = \min(X, C)$ , with  $C$  the censor and  $X$  the true value, which would have been observed without censoring. Let  $\delta = \mathbb{1}_{\leq C}$  be the censoring indicator.

Recall that the distribution of a random variable  $X$  is uniquely determined by its distribution function:  $F_X(t) = \mathbb{P}(X \leq t)$ . The survival function of  $X$  is defined by :  $S(t) = 1 - F_X(t) = \mathbb{P}(X > t)$ .  $S(t)$  also uniquely defines the distribution of  $X$ .

The hazard rate function of  $Y$  is defined as  $\mu(t) = \frac{P(X=t)}{P(X \geq t)}$  in the discrete case. The hazard

function is interpreted as the conditional probability of the failure of a device at age  $t$ , given that it did not fail before age  $t$ . In the discrete case, we note that  $\mu(t) = \frac{S(t) - S(t+1)}{S(t)}$  and, therefore,  $\frac{S(t+1)}{S(t)} = 1 - \mu(t)$ . So we have  $S(t) = \prod_{X_i < t} (1 - \mu(X_i))$ . An estimator of the survival function is thus obtained from an estimator of the instantaneous rates by posing  $\hat{S}(t) = \prod_{X_i < t} (1 - \hat{\mu}(X_i))$ . The  $X_i$  are the values taken by the random variable  $X$  while the  $t$  are all the values that can be taken.

Let us now note that  $H_0(t) = P(Y \leq t, \delta = 0)$ ,  $H_1(t) = P(Y \leq t, \delta = 1)$  and  $H(t) = P(Y \leq t)$  correspond to the cumulative distribution function respectively of the censored data, the uncensored data and the data in the aggregate. These three quantities have easily computable estimators  $\hat{H}_0(t) = \frac{1}{n} \sum_{i=1}^n (1 - \delta_i) \mathbb{1}_{\{Y_i \leq t\}}$ ,  $\hat{H}_1(t) = \frac{1}{n} \sum_{i=1}^n \delta_i \mathbb{1}_{\{Y_i \leq t\}}$  and  $\hat{H}(t) = \hat{M}_0(t) + \hat{M}_1(t)$ .

The instantaneous rates can be rewritten, with  $t-$  the value to the left of  $t$ ,  $\mu(t) = \frac{f(t)}{1-F(t-)} = \frac{1}{dt} \frac{dF(t)}{1-F(t-)}$  in the continuous case, and  $\mu(t) = \frac{P(X=1)}{1-F(t-)} = \frac{dF(t)}{1-F(t-)}$  in the discrete case. We can therefore write  $\mu(t) = \frac{dH_1(t)}{1-\hat{H}(t)}$  in the discrete case and, using the estimators for each function,  $\hat{\mu}(t) = \frac{d\hat{H}_1(t)}{1-\hat{H}(t)}$ , where  $\hat{H}_1(t)$  is the number of  $i$  where  $Y_i = t$  and  $\delta_i = 1$ . The Kaplan-Meier estimator can therefore be written, in the case with censoring and for  $X$  and  $C$  continuous or with density, as :

$$\hat{S}(t) = \prod_{i: Y_i \leq t} \left( 1 - \frac{\delta_i}{\sum_{j=1}^n \mathbb{1}_{\{Y_j \geq Y_i\}}} \right).$$

In the case of discrete data, there may be ties for  $Y_{(i)}$ . In this case, noting  $d_i$  as the number of deaths in  $Y_{(i)}$ , we can write :

$$\hat{S}(t) = \prod_{i: Y_i \leq t} \left( 1 - \frac{d_i}{\sum_{j=1}^n \mathbb{1}_{\{Y_j \geq Y_i\}}} \right).$$

## 2.2 Mixture models with varying mixing weights

A mixture model enables to model different sub-populations within the overall population without these sub-populations being identified in the data by an observed variable. McLachlan and Peel [16] are a reference in the literature. Using survival functions, let  $X_1, \dots, X_n$  be independent random variables such that, for any  $1 \leq i \leq n$ , the survival function of  $X_i$  on  $\mathbb{R}$ , denoted by  $S(X_i)$ , is a mixing density with  $K$  ( $K \geq 2$ ) components  $S_1, \dots, S_K$  and  $K$  non-negative mixing weights  $p_1, \dots, p_K$ , i.e. :

$$S(X_i) = \sum_{l=1}^K p_l S_l(X_i) \quad \text{with} \quad 0 \leq p_l \leq 1 \quad \forall l \in (1, \dots, K) \quad \text{et} \quad \sum_{l=1}^K p_l = 1$$

The  $(p_l, S_l)$  pairs are unknown for all  $l \in (1, \dots, K)$ . The authors use a parametric approach for the  $S_l$ . That enable them to estimate the pairs  $(p_l, S_l)$ .

Milhaud and al [17] also use two-component mixture distributions, but this time one of them is known. This type of model is particularly interesting when a known random phenomenon is contaminated by an unknown random effect. This article gives interesting ideas but the results concern semi-parametric models. Maiboroda and al. [12] use a finite mixture model in which the mixing probabilities vary from observation to observation. They assume a parametric model for one of the mixture component distribution, and non-parametric nuisance parameters for the others.

Thus the authors propose Generalized Estimating Equations (GEE) for the semi-parametric estimation, and they applied their model to the sociological analysis of voting results.

If one wants to deal with the classical mixture model with unknown weights, it is necessary to make assumptions about the mixture components such as parametric families for the mixture components or some mixture components exactly known. From now on, we will focus on non-parametric models. The advantage of this type of statistics is that it does not have to make any assumption about the mixture components as before but it requires the exact knowledge of the mixture weights.

Maiboroda and al. [13] analyses a mixture with varying concentrations for which they assume that the concentrations are known and the distributions of components are completely unknown. They propose a non-parametric technique for testing hypotheses on functional moments of components. Maiboroda and Sugakova [11] also use a finite mixture model and discuss the estimation of mixture components distributions, functional moments and densities. They propose tests for testing hypotheses on the moments, and applied their model to the analysis of DNA microarrays data.

Autin and Pouet [3] also use a variable weight mixture model (i.e. with different weights) to study the means of transportation to go to work either by bus/trolleybus or walking. For that, they use the means in the State of New York and the State of California, for people over or under 21 years old. Indeed, the authors consider two groups divided into several subgroups and are interested in comparing the means of two subgroups, one from each group. Samples are drawn from both groups and the subgroup label of each observation is not defined with certainty. The underlying mixture model is associated with known variable weights.

### 2.3 Mixture models with varying weights and censored data

Having recalled the basics of mixture models and duration models, we can now describe how these notions have been jointly studied in the literature. First, McLachlan and Peel [16] also studied the case of mixture models for failure time data, and thus the mixture of survival models. In this case, the author considers different types of failure ( $K = 2$  as an example). An element fails as soon as the first failure occurs, whatever the cause, and we observe the time  $C$  until the failure and the type of failure  $i$  ( $i = 1, 2$ ). In the case where the study ends before the failure,  $C$  is the censoring time and  $\delta$  the censoring indicator is equal to zero to indicate that the failure time is right censored. However, it must be taken into account that the models considered in Mc Lachlan and Peel's book (Chapter 10) are parametric.

For non-parametric estimations, Ryzhov [20] addresses the problem of estimating the distribution functions of components in a mixture in the case of randomly censored observations. Indeed, he considers the duration model of each group  $j$  :

$$S_j(t) = p_1(j)S_1(t) + p_2(j)S_2(t) + \dots + p_K(j)S_K(t)$$

with, for all  $j$ ,  $\sum_{l=1}^K p_l(j) = 1$  and  $0 \leq p_k(j) \leq 1$ .

Ryzhov studied estimators defined as linear combination of Kaplan-Meier estimators. Under mild conditions, he proved the asymptotic normality of these estimators with asymp-

otic variance depending on the coefficients of the linear combination and characteristic values of the cumulative distribution functions of the unknown mixture components. In the case of  $K$  mixture components and  $M$  subgroups (i.e.  $M$  different weight vectors) with  $M > K$ , several choices are possible for the coefficients in the linear combination. The optimal one depends as the asymptotic variance above on the mixing weights and on the characteristic features of the cumulative distribution functions of the mixture components. Ryzhov proved that a completely data-driven procedure could be applied to mimic the optimal oracle estimator.

We are going to consider the case  $K = M = 2$  as it allows us to already describe interesting new behaviours of the estimators. Under invertibility condition of the weight matrix, there is only one possible solution for the  $a_j(l)$ . As a matter of fact, the  $a_j(l)$  are the solutions of

$$\begin{bmatrix} p_1(1) & p_1(2) \\ p_2(1) & p_2(2) \end{bmatrix} \begin{bmatrix} a_1(1) \\ a_2(1) \end{bmatrix} = \begin{bmatrix} 1 \\ 0 \end{bmatrix} \quad \text{and} \quad \begin{bmatrix} p_1(1) & p_1(2) \\ p_2(1) & p_2(2) \end{bmatrix} \begin{bmatrix} a_1(2) \\ a_2(2) \end{bmatrix} = \begin{bmatrix} 0 \\ 1 \end{bmatrix}.$$

Furthermore, Maiboroda and Khyzanov [14] considered a modified Kaplan-Meier estimator for the distribution of components of a mixture with varying concentrations in the case of censored data.

We are now going to introduce the estimators of Ryzhov and Maiboroda. With a dataset divided into two samples, denoted A and B, and the mixture weights known for each sample, the estimator introduced by Ryzhov is based on a solution of the following equation system :

$$a_k(A)p_l(A) + a_k(B)p_l(B) = \delta_{kl}.$$

The estimator introduced by Ryzhov is

$$\hat{S}_l(t) = a_l(A)\hat{S}_A(t) + a_l(B)\hat{S}_B(t)$$

where  $\hat{S}_A(t)$  and  $\hat{S}_B(t)$  are the estimators directly computed from each sample.

The estimator introduced by Maiboroda is based on a solution of the following equation system

$$\frac{1}{n} \sum_{j=1}^n \tilde{a}_k(j)p_l(j) = \delta_{kl}$$

or equivalently

$$\frac{1}{n} \left[ \sum_{j \in A} \tilde{a}_k(A)p_l(A) + \sum_{j \in B} \tilde{a}_k(B)p_l(B) \right] = \delta_{kl}.$$

In the uncensored case, i.e  $Y_j = X_j$ , the estimator introduced by Maiboroda is given by

$$\forall l \in \{1, 2\}, \quad \tilde{S}_l(t) = \frac{1}{n} \sum_{j=1}^n \tilde{a}_l(j) \mathbb{1}_{\{X_j > t\}}.$$

In the censored case, the estimator introduced by Maiboroda is :

$$\forall l \in \{1, 2\}, \quad \tilde{S}_l(t) = \prod_{j=1:Y_j \leq t}^n \left( 1 - \frac{\tilde{a}_l(j)\delta_j}{n - \sum_{i=1}^n \mathbb{1}_{\{Y_i < Y_j\}} \tilde{a}_l(i)} \right).$$

**Remark** *If the labels are exactly known, the coefficients  $\tilde{a}_i(k)$  are equal to 0 or 1, and Maiboroda's estimator is equal to the usual Kaplan-Meier estimator computed for each sample.*

For the sake of completeness we state the following lemma dealing with the uncensored case.

**Lemma 2.1.** *Maiboroda estimator for censored duration model is the same as the estimator presented by Maiboroda and Dorin [13] in the uncensored case:*

$$1 - \tilde{S}_l(t) = \tilde{F}_l(t) = \frac{1}{n} \sum_{j=1}^n \tilde{a}_l(j) \mathbb{1}_{\{X_j < t\}}.$$

**Proof :** The estimator proposed by Maiboroda and Doronin [13] is :

$$\tilde{F}_l(t) = \frac{1}{n} \sum_{j=1}^n \tilde{a}_l(j) \mathbb{1}_{\{X_j < t\}}.$$

The estimator of the survival function corresponding to this estimator is

$$\begin{aligned} \tilde{S}_l(t) &= 1 - \tilde{F}_l(t) \\ &= 1 - \frac{1}{n} \sum_{j=1}^n \tilde{a}_l(j) \mathbb{1}_{\{X_j < t\}} \\ &= \frac{1}{n} \sum_{j=1}^n \tilde{a}_l(j) - \frac{1}{n} \sum_{j=1}^n \tilde{a}_l(j) \mathbb{1}_{\{X_j < t\}} \\ &= \frac{1}{n} \sum_{j=1}^n \tilde{a}_l(j) (1 - \mathbb{1}_{\{X_j < t\}}) = \frac{1}{n} \sum_{j=1}^n \tilde{a}_l(j) \mathbb{1}_{\{X_j > t\}}. \end{aligned}$$

The latter is indeed the estimator introduced by Maiboroda in the case where there is no censoring. Let's now show that this equality is also validated by Maiboroda's estimator in the general case, i.e. valid when there is censoring. In this case, the Maiboroda estimator is written :

$$\tilde{S}_l(t) = \prod_{j=1:Y_j \leq t}^n \left( 1 - \frac{\tilde{a}_l(j)\delta_j}{n - \sum_{i=1}^n \tilde{a}_l(i) \mathbb{1}_{\{Y_i < Y_j\}}} \right).$$

With uncensored data, we have  $\delta_j = 1$  for all  $j \in \{1, \dots, n\}$ . In this case, we can rewrite :

$$\begin{aligned}
\tilde{S}_l(t) &= \prod_{j=1:Y_j \leq t}^n \left( 1 - \frac{\tilde{a}_l(j)}{\sum_{i=1}^n \tilde{a}_l(i) \mathbb{1}_{\{Y_i \geq Y_j\}}} \right) \\
&= \prod_{j=1:Y_j \leq t}^n \left( \frac{\sum_{i=1}^n \tilde{a}_l(i) \mathbb{1}_{\{Y_i > Y_j\}}}{\sum_{i=1}^n \tilde{a}_l(i) \mathbb{1}_{\{Y_i \geq Y_j\}}} \right).
\end{aligned}$$

In the density case, arranging the observations such that, for a chosen  $t$ ,  $Y_{(1)} < \dots < Y_{(k)} < t < Y_{(k+1)} < \dots < Y_{(n)}$ . We can then rewrite, using telescoping :

$$\begin{aligned}
\tilde{S}_l(t) &= \prod_{j=1:Y_{(j)} \leq t}^n \left( \frac{\sum_{i=1}^n \tilde{a}_l(i) \mathbb{1}_{\{Y_{(i)} > Y_{(j)}\}}}{\sum_{i=1}^n \tilde{a}_l(i) \mathbb{1}_{\{Y_{(i)} \geq Y_{(j)}\}}} \right) \\
&= \frac{\sum_{i=1}^n \tilde{a}_l(i) \mathbb{1}_{\{Y_{(i)} > Y_{(1)}\}}}{\sum_{i=1}^n \tilde{a}_l(i) \mathbb{1}_{\{Y_{(i)} \geq Y_{(1)}\}}} \frac{\sum_{i=1}^n \tilde{a}_l(i) \mathbb{1}_{\{Y_{(i)} > Y_{(2)}\}}}{\sum_{i=1}^n \tilde{a}_l(i) \mathbb{1}_{\{Y_{(i)} \geq Y_{(2)}\}}} \dots \frac{\sum_{i=1}^n \tilde{a}_l(i) \mathbb{1}_{\{Y_{(i)} > Y_{(k)}\}}}{\sum_{i=1}^n \tilde{a}_l(i) \mathbb{1}_{\{Y_{(i)} \geq Y_{(k)}\}}} \\
&= \frac{\sum_{i=1}^n \tilde{a}_l(i) \mathbb{1}_{\{Y_{(i)} > Y_{(k)}\}}}{\sum_{i=1}^n \tilde{a}_l(i) \mathbb{1}_{\{Y_{(i)} \geq Y_{(1)}\}}}.
\end{aligned}$$

Since  $Y_{(k)} < t$ , the term  $\mathbb{1}_{\{Y_{(i)} > Y_{(k)}\}}$  can be replaced by  $\mathbb{1}_{\{Y_{(i)} > t\}}$ . Furthermore,  $\mathbb{1}_{\{Y_{(i)} \geq Y_{(1)}\}} = 1$  and  $\sum_{i=1}^n \tilde{a}_l(i) = n$ . Then, in the uncensored case, we obtain :

$$\tilde{S}_l(t) = \frac{1}{n} \sum_{j=1}^n \tilde{a}_l(j) \mathbb{1}_{\{Y_j > t\}}.$$

**Proposition 2.2.** *In the uncensored case, the set of Ryzhov estimators is a subset of the set of Maiboroda estimators.*

**Proof :** Let us assume that the  $\tilde{a}_k(j)$  are constant over each sample. Then the equation (2.3) becomes

$$\frac{n_A}{n} \tilde{a}_k(A) p_l(A) + \frac{n_B}{n} \tilde{a}_k(B) p_l(B) = \delta_{kl}$$

Let us state :  $a_k(A) = \frac{n_A}{n} \tilde{a}_k(A)$  and  $a_k(B) = \frac{n_B}{n} \tilde{a}_k(B)$ .

Computing Maiboroda estimator with this relationship leads to

$$\begin{aligned}
\tilde{S}_l(t) &= \frac{1}{n} \sum_{j=1}^n \tilde{a}_l(j) \mathbb{1}_{\{X_j > t\}} \\
&= \frac{1}{n} \left[ \frac{n}{n_A} a_l(A) \sum_{j \in A} \mathbb{1}_{\{X_j > t\}} + \frac{n}{n_B} a_l(B) \sum_{j \in B} \mathbb{1}_{\{X_j > t\}} \right] \\
&= a_l(A) \frac{1}{n_A} \sum_{j \in A} \mathbb{1}_{\{X_j > t\}} + a_l(B) \frac{1}{n_B} \sum_{j \in B} \mathbb{1}_{\{X_j > t\}} \\
&= a_l(A) \hat{S}_A(t) + a_l(B) \hat{S}_B(t).
\end{aligned}$$

The last line above is exactly Ryzhov estimator.



However this equality is no more valid in the case of censored data.

**Proposition 2.3.** *In the censored case for  $M = K = 2$ , Ryzhov and Maiboroda estimators can take different values.*

**Proof :** One needs only to describe a case with different values for the estimators. Let us assume the following pattern for the censored variable,  $\delta_i$  :

- The first (in ascending order)  $i$  observations are not censored. The last observation of this subset is  $Y_{i_1}$ .
- The first censored observation is  $Y_{i_2}$  and belongs to sample B.
- The observation immediately following  $Y_{i_2}$  is  $Y_{i_3}$ . We assume it is uncensored and belongs to sample A.

Let us choose  $t > Y_{i_3}$  such that there is no observation between  $t$  and  $Y_{i_3}$ . According to previous proposition, we know that  $\hat{S}_l(s) = \tilde{S}_l(s)$  for any  $s \in ]Y_{i_1}, Y_{i_2}[$ .

Ryzhov estimator at time  $t$  can be written as :

$$\begin{aligned}
\hat{S}_l(t) &= a_l(A)\hat{S}_A(t) + a_l(B)\hat{S}_B(t) \\
&= a_l(A)\hat{S}_A(s) \left( 1 - \frac{1}{n_A - \sum_{i \in A} \mathbb{1}_{\{Y_i < Y_{i_3}\}}} \right) + a_l(B)\hat{S}_B(s) \\
&= \hat{S}_l(s) - a_l(A)\hat{S}_A(s) \left( \frac{1}{n_A - \sum_{i \in A} \mathbb{1}_{\{Y_i < Y_{i_3}\}}} \right) \\
&= \hat{S}_l(s) - \hat{S}_l(s) \left( \frac{1}{n_A - \sum_{i \in A} \mathbb{1}_{\{Y_i < Y_{i_3}\}}} \right).
\end{aligned}$$

In fact, this estimator at point  $t$  is no different from the one we would obtain if observation  $Y_{i_2}$  did not exist. This observation has no influence on  $\hat{S}_A(t)$  and  $\hat{S}_B(t)$ . On the other hand, Maiboroda's estimator at time  $t$  can be written as  $\tilde{a}_l(i_3) = \frac{n}{n_A}a_l(A)$  :

$$\begin{aligned}
\tilde{S}_l(t) &= \prod_{j=1:Y_j \leq t}^n \left( 1 - \frac{\tilde{a}_l(j)\delta_j}{n - \sum_{i=1}^n \mathbb{1}_{\{Y_i < Y_j\}}\tilde{a}_l(i)} \right) \\
&= \prod_{j=1:Y_j \leq s}^n \left( 1 - \frac{\tilde{a}_l(j)\delta_j}{n - \sum_{i=1}^n \mathbb{1}_{\{Y_i < Y_j\}}\tilde{a}_l(i)} \right) \left( 1 - \frac{\tilde{a}_l(i_3)\delta_{i_3}}{n - \sum_{i=1}^n \mathbb{1}_{\{Y_i < Y_{i_3}\}}\tilde{a}_l(i)} \right) \\
&= \tilde{S}_l(s) - \tilde{S}_l(s) \left( \frac{\tilde{a}_l(i_3)\delta_{i_3}}{n - \sum_{i=1}^n \mathbb{1}_{\{Y_i < Y_{i_3}\}}\tilde{a}_l(i)} \right) \\
&= \tilde{S}_l(s) - \tilde{S}_l(s) \left( \frac{\tilde{a}_l(A)\delta_{i_3}}{n_A - \frac{n_A}{n} \sum_{i=1}^n \mathbb{1}_{\{Y_i < Y_{i_3}\}}\tilde{a}_l(i)} \right) \\
&= \tilde{S}_l(s) - \tilde{S}_l(s) \left( \frac{a_l(A)}{n_A - \frac{n_A}{n} \sum_{i \in A} \mathbb{1}_{\{Y_i < Y_{i_3}\}}\tilde{a}_l(i)} \right).
\end{aligned}$$

We can see that Ryzhov and Maiboroda estimators differs in the second term. For Ryzhov it only involves observations from the sample A whereas for Maiboroda it involves observations from the samples A and B.

In the extreme example where the first  $i$  observations would belong to  $B$ , we therefore have for Ryzhov, in the denominator of the second term,  $n_A - 0 = n_A$ , whereas for Maiboroda we subtract from  $n_A$  a non-zero term, so the Ryzhov and Maiboroda estimators may be different in the case with censoring.

### 3 Simulations

#### 3.1 Continuous data - exponential distributions

We start our analysis with continuous simulated data and we compare the Ryzhov [20] and Maiboroda [15] estimators. To measure the efficiency of our estimators, we measure the sup-norm  $\sup_{t \in \mathbb{R}} |\hat{S}(t) - S(t)|$ .

We restrict to the case of two insurers labelled A and B, that we are going to call samples, and two groups labelled 1 and 2. We also have in this case  $n = n_A + n_B$  with balanced groups, that is to say  $n_A = n_B = \frac{n}{2}$ . The mixture weights is given by Table 1.

	Group 1	Group 2
Sample A	$p_1(A)$	$p_2(A)$
Sample B	$p_1(B)$	$p_2(B)$

Table 1: Mixing weights

Let us denote  $S_1$  (resp.  $S_2$ ) the survival function for the group 1 (resp. 2). Then the survival functions for the samples are given by

$$\hat{S}_A(t) = p_1(A)\hat{S}_1(t) + p_2(A)\hat{S}_2(t) \quad \text{and} \quad \hat{S}_B(t) = p_1(B)\hat{S}_1(t) + p_2(B)\hat{S}_2(t) \quad (1)$$

For the first simulation, we choose  $n = 1000$  and  $n_A = n_B = n/2 = 500$ . Simulations are done using Python. We start by using exponential distributions of parameters  $\lambda_1 = 50$  and  $\lambda_2 = 30$  respectively. Exponential distributions are often used to model survival times because they are the simplest distributions that can be used to characterize survival data. This is because they are memoryless, and thus the hazard function is constant with time, as explained by Rodriguez [19] in the Chapter 7 of his lecture. The mixing weights are chosen equal to

$$p_1(A) = 0.7, p_2(A) = 0.3, p_1(B) = 0.1 \text{ and } p_2(B) = 0.9. \quad (2)$$

The sample  $A$  is simulated by the following model:

$$X_A = R_A X_{A1} + (1 - R_A) X_{A2},$$

with  $Y_{A1} \sim \mathcal{E}(\lambda_1)$  and  $Y_{A2} \sim \mathcal{E}(\lambda_2)$ , of size  $n_A$ , and  $R_A \sim \mathcal{Bernoulli}(p_1(A))$ .

The sample B is simulated by a similar model where the index A is replaced by B:

$$Y_B = R_B Y_{B1} + (1 - R_B) Y_{B2},$$

with  $X_{B1} \sim \mathcal{E}(\lambda_1)$  and  $X_{B2} \sim \mathcal{E}(\lambda_2)$ , of size  $n_B$ , and  $R_B \sim \text{Bernoulli}(p_1(B))$ .

The censoring mechanism is modeled by the same exponential distribution for the two samples A and B:  $\mathcal{E}(\lambda_c = 40)$ . We denote  $C_A$  (resp.  $C_B$ ) the random variable modeling the censoring for insurer A (resp. B). We simulate the observed variables by  $Y_A = \min(C_A, X_A)$  and  $Y_B = \min(C_B, X_B)$ .

The estimators are computed using scikit-survival module in Python [18], that allows doing survival analysis while utilizing the power of scikit-learn. For the Ryzhov estimator, we use the distinction between the different samples. We estimate  $\hat{S}_A(t)$  and  $\hat{S}_B(t)$  using the Kaplan-Meier estimator. As the estimators  $\hat{S}_A$  and  $\hat{S}_B$  are not necessarily computed at the same points by the scikit-survival module in Python, we apply an interpolation of the obtained estimators at all the observed points whether they belong to sample A or sample B.

Then we compute the estimators of  $\hat{S}_1$  and  $\hat{S}_2$  according to the following linear system:

$$\begin{aligned}\hat{S}_A(t) &= p_1(A)\hat{S}_1(t) + p_2(A)\hat{S}_2(t), \\ \hat{S}_B(t) &= p_1(B)\hat{S}_1(t) + p_2(B)\hat{S}_2(t).\end{aligned}$$

We can rewrite this system in vector form:  $M \cdot \hat{S}_{12} = \hat{S}_{AB}$  with  $M$  the weight matrix,  $\hat{S}_{12} = [\hat{S}_1, \hat{S}_2]^t$  and  $\hat{S}_{AB} = [\hat{S}_A, \hat{S}_B]^t$ . As we have exactly two samples and two groups, we just have to invert the matrix  $M$  to obtain  $\hat{S}_{12} = M^{-1} \cdot \hat{S}_{AB}$ . With the chosen weights, we obtain :

$$M^{-1} = \begin{pmatrix} 1.5 & -0.5 \\ -0.16667 & 1.16667 \end{pmatrix}.$$

We can now compare  $\hat{S}_1(t)$  with  $S_1(t)$  and  $\hat{S}_2(t)$  with  $S_2(t)$ . By computing the sup-norm  $\sup_{t \in \mathbb{R}} |\hat{S}(t) - S(t)|$ , we find, after 1000 repetitions, 0.101 for the estimate of  $S_1$  and 0.064 for  $S_2$ . We then analyse the case with low censorship, using an exponential distribution of parameter  $\lambda_c = 200$  and  $\lambda_c = 1000$ , that is almost a case without censorship. Results get better with less censorship as expected.

For the Maiboroda estimator, we concatenate the observations of  $X_A$  and  $X_B$  ( $X$ ) and then  $C_A$  and  $C_B$  ( $C$ ) and we study  $Y = \min(X, C)$ . As we no longer have 2 distinct samples with a different proportion of each group for each sample, but a probability of belonging to each group for each individual. We thus seek the  $a_1$  and  $a_2$  such that:

$$\begin{aligned}\frac{1}{n} \sum_{k=1}^n \tilde{a}_1(k) p_1(k) &= 1, \quad \frac{1}{n} \sum_{k=1}^n \tilde{a}_1(k) p_2(k) = 0. \\ \frac{1}{n} \sum_{k=1}^n \tilde{a}_2(k) p_1(k) &= 0, \quad \frac{1}{n} \sum_{k=1}^n \tilde{a}_2(k) p_2(k) = 1.\end{aligned}$$

As  $n_A = n_B = n/2$  and as there is no reason to privilege one observation over another in each sample, we can choose for observation  $k$  in sample A

$$\tilde{a}_1(A) = \tilde{a}_1(k) = 2a_1(k) \quad \text{and} \quad \tilde{a}_2(A) = \tilde{a}_2(k) = 2a_2(k)$$

It is the same if observation  $k$  is in sample  $B$ . By computing again the mean of the sup-norm  $\sup_{t \in \mathbb{R}} |\hat{S}(t) - S(t)|$ , we find, after 1000 repetitions,  $1e+26$  for the estimate of  $S_1$  and  $4e+14$  for  $S_2$ . These last results are very surprising, since the sup-norm loss for the survival functions should be between 0 and 1.

We noticed that the  $\tilde{a}_l$  could compensate each other in the denominator, and then we could have a division by 0 or by a very close number, which would lead to a large result. Moreover, the chosen weights are  $p_1(A) = 0.7, p_2(A) = 0.3, p_1(B) = 0.1$  and  $p_2(B) = 0.9$ , and in this case we have  $\tilde{a}_1(A) = 3, \tilde{a}_1(B) = -1, \tilde{a}_2(A) = -1/3$  and  $\tilde{a}_2(B) = 7/3$ . In this case, it's possible that  $\sum_{i: Y_i < Y_j} \tilde{a}_l(i)$  offsets itself if we have, for example, for group  $l = 1$ , 3 individuals from sample A and 1 from sample B.

	Ryzhov		Maiboroda	
	n = 100	n = 1000	n = 100	n = 1000
$\lambda_c = 40$	0.264	0.101	3e+27	1e+26
$\lambda_c = 200$	0.185	0.063	2e+12	3e+10
$\lambda_c = 1000$	0.176	0.060	2e+11	1e+10

Table 2: Comparison Ryzhov and Maiboroda estimators for group 1 for the sup-norm  $\sup_{t \in \mathbb{R}} |\hat{S}_1(t) - S_1(t)|$

	Ryzhov		Maiboroda	
	n = 100	n = 1000	n = 100	n = 1000
$\lambda_c = 40$	0.180	0.064	4e+13	4e+14
$\lambda_c = 200$	0.137	0.046	9e+12	2e+26
$\lambda_c = 1000$	0.133	0.045	6e+11	2e+18

Table 3: Comparison Ryzhov and Maiboroda estimators for group 2 for the sup-norm  $\sup_{t \in \mathbb{R}} |\hat{S}_2(t) - S_2(t)|$

To my knowledge, this phenomenon had not been highlighted before. The choice of the weights can have a big impact on the results. That is why we have huge values for the mean of  $\sup_{t \in \mathbb{R}} |\hat{S}_2(t) - S_2(t)|$  for the Maiboroda's estimator. We do not have the same kind of problem for the Ryzhov's estimators since the use of the weights is not done individually but directly on the survival function of the group.

Table 2 summarizes the results obtained for the selected weights. Other results have been obtained for different weights (available on request). The compensation problem in the denominator was also spotted for different couples of weights.

To have correct survival functions, we propose to perform a smoothing for Ryzhov and Maiboroda estimators. For this, we start by increasing the function by 1 and decreasing it by 0. We then smooth the survival function from step to step, starting with  $t = 0$ , and if  $S(t+1) > S(t)$ , giving  $S(t+1)$  the value of  $S(t)$ .

In the particular case of  $p_1(A) = 0.7, p_2(A) = 0.3, p_1(B) = 0.1$  and  $p_2(B) = 0.9$ , the mean of the sup-norm  $\sup_{t \in \mathbb{R}} |\hat{S}(t) - S(t)|$  after 1000 repetitions is equal to 0.097 for the Ryzhov's estimator of  $S_1$  and 0.061 for  $S_2$ , and equal to 0.116 for the Maiboroda's estimator of  $S_1$  and 0.078 for  $S_2$ . Again, the results get better with less censorship. Table 4 shows the results obtained for this particular choice of mixing weights. In the Appendix, other results are given for different weights and sizes.

	Ryzhov		Maiboroda	
	n = 100	n = 1000	n = 100	n = 1000
$\lambda_c = 40$	0.239	0.097	0.236	0.116
$\lambda_c = 200$	0.180	0.063	0.181	0.067
$\lambda_c = 1000$	0.171	0.061	0.174	0.061

Table 4: Comparison Ryzhov and Maiboroda smoothed estimators for group 1 for the sup-norm  $\sup_{t \in \mathbb{R}} |\hat{S}_1(t) - S_1(t)|$

	Ryzhov		Maiboroda	
	n = 100	n = 1000	n = 100	n = 1000
$\lambda_c = 40$	0.169	0.061	0.186	0.078
$\lambda_c = 200$	0.136	0.047	0.145	0.053
$\lambda_c = 1000$	0.130	0.045	0.134	0.046

Table 5: Comparison Ryzhov and Maiboroda smoothed estimators for group 2 for the sup-norm  $\sup_{t \in \mathbb{R}} |\hat{S}_2(t) - S_2(t)|$

The results obtained are quite close when  $\lambda_c$  is large, which is quite normal since we have seen that the estimators are the same in the uncensored case. The differences come from the fact that there is still a small amount of censoring and that there can be approximations with the Python calculation method.

### 3.2 Continuous data - other distributions

In order to understand whether the Ryzhov and Maiboroda estimators work in the same way with other distributions, we will now use Pareto distributions of parameters  $b_1 = 50$  and  $b_2 = 30$  respectively. We choose  $n = 1000$  and  $n_A = n_B = \frac{n}{2} = 500$ . The mixing weights are again chosen equal to :

$$p_1(A) = 0.7, p_2(A) = 0.3, p_1(B) = 0.1 \text{ and } p_2(B) = 0.9.$$

Sample  $A$  is simulated by the following model:

$$X_A = R_A X_{A1} + (1 - R_A) X_{A2},$$

with  $X_{A1}$  and  $X_{A2}$  following Pareto distributions of respective parameters  $b_1 = 50$  and  $b_2 = 30$ , size  $n_A$ , and  $R_A \sim \text{Bernoulli}(p_1(A))$ .

The same applies to sample B. The censoring mechanism is modeled by the same Pareto distribution for both samples A and B:  $\mathcal{E}(b_c = 40)$ . We denote  $C_A$  (resp.  $C_B$ ) the random variable modeling censorship for insurer A (resp. B). We simulate the observed variables by  $Y_A = \min(C_A, X_A)$  and  $Y_B = \min(C_B, X_B)$ .

Once again, the estimators are calculated using the Kaplan-Meier function in Python's scikit-survival module. Using the same method as above, we calculate the estimators of  $\hat{S}_1$  and  $\hat{S}_2$ . To obtain correct survival functions, we again propose smoothing for the Ryzhov and Maiboroda estimators.

The mean of the sup norm  $\sup_{t \in \mathbb{R}} |\hat{S}(t) - S(t)|$  after 1000 repetitions is equal to 0.093 for the Ryzhov estimator of  $S_1$  and 0.063 for  $S_2$ , and equal to 0.110 for the Maiboroda

estimator of  $S_1$  and 0.077 for  $S_2$ .

	Ryzhov		Maiboroda	
	n = 100	n = 1000	n = 100	n = 1000
$b_c = 40$	0.242	0.093	0.242	0.110
$b_c = 200$	0.182	0.063	0.184	0.066
$b_c = 1000$	0.175	0.060	0.177	0.061

Table 6: Comparison Ryzhov and Maiboroda smoothed estimators for group 1 for the sup-norm  $\sup_{t \in \mathbb{R}} |\hat{S}_1(t) - S_1(t)|$

	Ryzhov		Maiboroda	
	n = 100	n = 1000	n = 100	n = 1000
$b_c = 40$	0.175	0.063	0.193	0.077
$b_c = 200$	0.139	0.047	0.144	0.057
$b_c = 1000$	0.134	0.044	0.137	0.047

Table 7: Comparison Ryzhov and Maiboroda smoothed estimators for group 2 for the sup-norm  $\sup_{t \in \mathbb{R}} |\hat{S}_2(t) - S_2(t)|$

By running the simulations with different degrees of censoring, the results improve with less censoring. Table 6 shows the results obtained for this particular choice of weights in the case of a mixture of Pareto laws. Once again, we see that results improve as sample size increases and censoring decreases.

We repeat the simulations in the case of Weibull distributions. We therefore use Weibull distributions with shape parameter  $k = 2$  for both distributions, and with distribution scale parameter  $\lambda_1 = 50$  and  $\lambda_2 = 30$  respectively. We choose  $n = 1000$  and  $n_A = n_B = \frac{n}{2} = 500$ . The mixing weights are again chosen equal to  $p_1(A) = 0.7, p_2(A) = 0.3, p_1(B) = 0.1$  and  $p_2(B) = 0.9$ .

The censoring mechanism is modeled by the same Weibull distribution as for the two samples A and B:  $k = 2$  and  $\lambda_c = 40$ . We denote  $C_A$  (resp.  $C_B$ ) the random variable modeling censorship for insurer A (resp. B). We again simulate the observed variables by  $Y_A = \min(C_A, X_A)$  and  $Y_B = \min(C_B, X_B)$ .

The estimation of  $\hat{S}_1$  and  $\hat{S}_2$  is done as before, and as the choice of weights has not changed, we have the same  $M^{-1}$ . Again, we smooth the Ryzhov and Maiboroda estimators.

	Ryzhov		Maiboroda	
	n = 100	n = 1000	n = 100	n = 1000
$\lambda_c = 40$	0.262	0.111	0.258	0.178
$\lambda_c = 200$	0.169	0.059	0.171	0.060
$\lambda_c = 1000$	0.166	0.059	0.169	0.059

Table 8: Comparison Ryzhov and Maiboroda smoothed estimators for group 1 for the sup-norm  $\sup_{t \in \mathbb{R}} |\hat{S}_1(t) - S_1(t)|$

	Ryzhov		Maiboroda	
	n = 100	n = 1000	n = 100	n = 1000
$\lambda_c = 40$	0.159	0.056	0.198	0.111
$\lambda_c = 200$	0.130	0.045	0.134	0.047
$\lambda_c = 1000$	0.130	0.044	0.133	0.044

Table 9: Comparison Ryzhov and Maiboroda smoothed estimators for group 2 for the sup-norm  $\sup_{t \in \mathbb{R}} |\hat{S}_2(t) - S_2(t)|$

Table 8 shows the results obtained for this particular choice of weights in the case of a mixture of Weibull distributions, for different values of  $n$  and censor  $\lambda_c$ , but always with a shape parameter  $k = 2$ . We also note that the results improve with less censoring, although this time the gap between  $\lambda_c = 200$  and  $\lambda_c = 1000$  is smaller, due to the shape of the Weibull distribution.

We will now analyze our results in a final case, that of the Gamma distribution. Again we take  $n = 1000$ ,  $n_A = n_B = \frac{n}{2}$ , and the same mixing weights.

Samples A (of size  $n_A$ ) and B (of size  $n_B$ ) are simulated as before, but with Gamma distributions of respective parameters  $a_1 = 50$  and  $a_2 = 30$ . The censoring mechanism ( $C_A$  and  $C_B$ ) is also simulated with a Gamma distribution of parameter  $a_c = 40$ . We again simulate the observed variables by  $Y_A = \min(C_A, X_A)$  and  $Y_B = \min(C_B, X_B)$ .

We also smooth the Ryzhov and Maiboroda estimators using the same technique as in the previous simulations. The mean of the sup  $\sup_{t \in \mathbb{R}} |\hat{S}(t) - S(t)|$  norm after 1000 repetitions is equal to 0.213 for the Ryzhov estimator of  $S_1$  and 0.046 for  $S_2$ , and equal to 0.530 for the Maiboroda estimator of  $S_1$  and 0.328 for  $S_2$ .

	Ryzhov		Maiboroda	
	n = 100	n = 1000	n = 100	n = 1000
$a_c = 40$	0.426	0.213	0.555	0.530
$a_c = 200$	0.165	0.058	0.167	0.058
$a_c = 1000$	0.163	0.056	0.165	0.056

Table 10: Comparison Ryzhov and Maiboroda smoothed estimators for group 1 for the sup-norm  $\sup_{t \in \mathbb{R}} |\hat{S}_1(t) - S_1(t)|$

	Ryzhov		Maiboroda	
	n = 100	n = 1000	n = 100	n = 1000
$a_c = 40$	0.136	0.046	0.375	0.328
$a_c = 200$	0.128	0.044	0.130	0.044
$a_c = 1000$	0.128	0.043	0.129	0.043

Table 11: Comparison Ryzhov and Maiboroda smoothed estimators for group 2 for the sup-norm  $\sup_{t \in \mathbb{R}} |\hat{S}_2(t) - S_2(t)|$

Table 10 shows the results obtained for this particular choice of weights in the case of a mixture of Gamma laws, for different values of  $n$  (100 and 1000) and censoring  $a_c$ . The Python code used to redo the simulations for these different laws is available on GitHub.<sup>1</sup>

<sup>1</sup>GitHub directory "Survival Analysis Varying Mixing Weights" de Margaux Thorez (2024) Available at [https://github.com/Margauxxxxxxx/Survival\\_Analysis\\_Varying\\_Mixing\\_Weights](https://github.com/Margauxxxxxxx/Survival_Analysis_Varying_Mixing_Weights).

### 3.3 Discrete data

Since the objective of our study is to be able to analyse real-life data such as sick leave data, which are discrete rather than continuous, we now turn to the case of discrete data. We propose a modified version of Maiboroda's estimator to take into account the fact that the data is now discrete. The modified Kaplan-Meier estimator is now given, with  $\tilde{Y}_i$  denoting the observations without duplicates, by

$$\tilde{S}_l(t) = \prod_{\tilde{Y}_j \leq t} \left( 1 - \frac{\sum_{Y_h = \tilde{Y}_j} \tilde{a}_l(h) \delta_k}{n - \sum_{Y_i < \tilde{Y}_j} \tilde{a}_l(i)} \right).$$

This estimator is similar to the Kaplan-Meier estimator in the discrete case. We obtain the same one in the case where the individuals are totally identified (with weights equal to 0 or 1): in this case, the  $\tilde{a}_k(i)$  are either equal to  $\frac{n}{n_k}$ , or 0, which gives us the estimator seen in Section 2. Moreover, we never have  $Y_k = Y_j$  in the continuous case except if  $k = j$ , so this estimator gives the same results that the one before in the continuous case. Therefore it extends Maiboroda estimator of the previous section.

We consider the same set-up as the one considered in the continuous case:

- same mixing weights

$$p_1(A) = 0.7, p_2(A) = 0.3, p_1(B) = 0.1 \text{ and } p_2(B) = 0.9,$$

- same sample sizes for samples A and B.

The mean of the sup-norm  $\sup_{t \in \mathbb{R}} |\hat{S}(t) - S(t)|$  after 1000 repetitions is equal to 0.097 for the Ryzhov's estimator of  $S_1$  and 0.063 for  $S_2$ , and equal to 0.105 for the Maiboroda's estimator of  $S_1$  and 0.113 for  $S_2$ . The tables below summarize the results obtained for this particular choice of mixing weights for different  $n$  and  $\lambda_c$  :

	Ryzhov		Maiboroda	
	n = 100	n = 1000	n = 100	n = 1000
$\lambda_c = 40$	0.236	0.097	0.234	0.105
$\lambda_c = 200$	0.177	0.061	0.180	0.070
$\lambda_c = 1000$	0.169	0.058	0.174	0.068

Table 12: Comparison Ryzhov and Maiboroda estimators for group 1 for the sup-norm  $\sup_{t \in \mathbb{R}} |\hat{S}_1(t) - S_1(t)|$  in the case of discrete data

	Ryzhov		Maiboroda	
	n = 100	n = 1000	n = 100	n = 1000
$\lambda_c = 40$	0.166	0.063	0.203	0.113
$\lambda_c = 200$	0.132	0.046	0.158	0.085
$\lambda_c = 1000$	0.125	0.045	0.144	0.077

Table 13: Comparison Ryzhov and Maiboroda estimators for group 2 for the sup-norm  $\sup_{t \in \mathbb{R}} |\hat{S}_2(t) - S_2(t)|$  in the case of discrete data



In the Appendix, we compare  $\hat{S}_1(t)$  with  $S_1(t)$  and  $\hat{S}_2(t)$  with  $S_2(t)$  for different weights, different data sizes, and different values of the censoring parameter  $\lambda_c$ . The results are overall better than in the continuous case. Results have been obtained for different weights, different data sizes, and different censoring proportions, in the case of discrete data.

## 4 Application to an empirical database

### 4.1 Data description and application of our models

We are now going to apply our models to an anonymized dataset. We will use insurer data for which we have the duration of the sick leaves, the age of the persons stopped and their gender. We have chosen data with what is called a short deductible. The insurer intervenes directly in case of sick leaves, so we can consider that there is no truncation on the left. Our goal is to evaluate the loss of information caused by ignoring this data. We will use it only in a second step to compare our estimates of the duration models to those that we would have obtained by directly using the Kaplan-Meier estimator ( $S^{(KM)}(t)$ ) on the data belonging to each group.

As we only have the data from one insurer, we consider samples A and B to be respectively the samples for people having an age less than or equal to 40 years, and an age above 40 years. The group 1 is the one of men and the group 2 is the one of women (as the first digit in the French social security identification number).

Age Group (Sample)	Gender (Group)	Number of people	Proportion
<= 40ans	M	6 339	0.385819
	F	10 091	0.614181
> 40ans	M	6 759	0.403643
	F	9 986	0.596357

Table 14: Proportion of each sample and group for our real database

We computed Ryzhov’s and Maiboroda’s estimators as described in Section 3 for discrete data. For the Maiboroda’s estimator, we cannot use the same trick as before for the computation of the  $a_i(i)$  because the data size are not the same anymore. To obtain the weights  $\tilde{a}_1$  and  $\tilde{a}_2$ , we use CVXPY [4], an open source Python-embedded modelling language for convex optimization problems. Figure 1 shows the results obtained for the estimated survival functions of group 1 using both estimators.

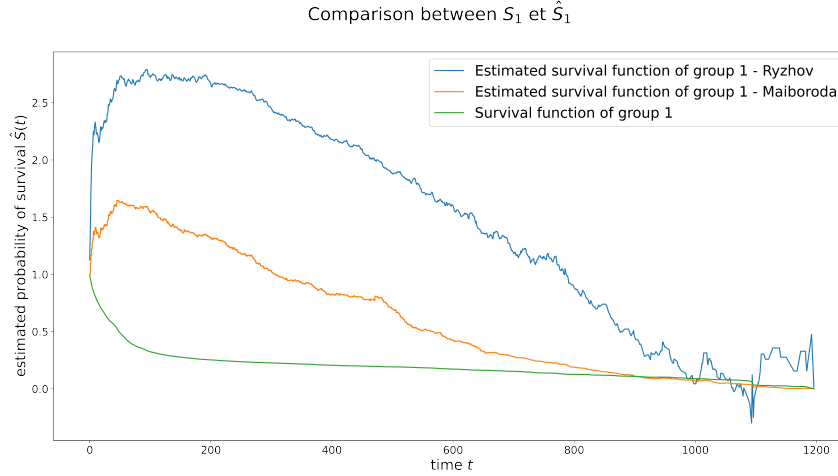


Figure 1: Estimated survival functions using Ryzhov's and Maiboroda's estimators

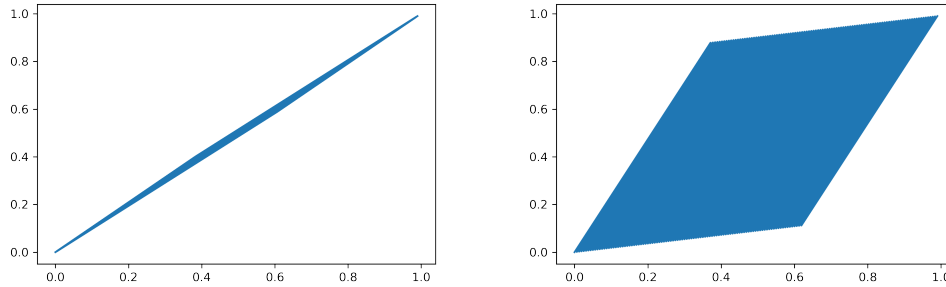
Note : The estimated survival functions using Ryzhov's and Maiboroda's estimators for group 1 are here shown without correction.

We can see that the results are not as good as for simulated data. This was expected as the mixing weights are quite close and it is known that in this case the coefficients will be large entailing a large variance. Nevertheless they are better for the Maiboroda estimator. Using the real weights  $p_1(A) = 0.385819, p_2(A) = 0.614181, p_1(B) = 0.403643$  and  $p_2(B) = 0.596357$ , we obtain, for the Ryzhov's coefficients:

$$M^{-1} = \begin{pmatrix} -33.45762024 & 34.45762024 \\ 22.64570951 & -21.64570951 \end{pmatrix}$$

For Maiboroda, the coefficients estimated using CVXPY are  $\tilde{a}_1(A) = -67.55200551, \tilde{a}_2(A) = 45.72300539, \tilde{a}_1(B) = 68.26242083$  and  $\tilde{a}_2(B) = -42.88179371$ . We obtained the sup-norm  $\sup_{t \in \mathbb{R}} |\hat{S}(t) - S^{(KM)}(t)|$  equal to 2.489 for the Ryzhov's estimate of  $S_1$  and to 1.623 for  $S_2$ , and equal to 1.260 for the Maiboroda's estimate of  $S_1$  and equal to 1.212 for  $S_2$ . The figure for  $S_2$  is given in the Appendix.

The results obtained are not surprising. Indeed, for the estimators of  $S_1$  and  $S_2$  to be between 0 and 1 at any time, the estimators of  $S_A$  and  $S_B$  would have to be part of the subspace  $\{ M \begin{pmatrix} x \\ y \end{pmatrix}, (x, y) \in [0, 1]^2 \}$ . Figure 2 shows the space of possible results. The distance between  $S_A$  and  $S_B$  must be less than 0.15 in these case, according to the chosen weights. We see that the available space is small, so if the gap between the two estimators is a little too large, the results for the estimators of  $S_1$  and  $S_2$  will not always be in the interval  $[0, 1]$ . This space becomes more important for the next choice of points, which explains the better results.



(a) Space of possible results with the original data weights (b) Space of possible results with the chosen weights

Figure 2: Space of possible results

We analyse the results obtained using a limit of 360 days for the sick leaves. In fact, in France, sick leaves due to disability can last up to 3 years in case of LDD (long duration disease), but in general, the French Social Security stops compensating sick leaves outside LDD after one year. We obtained a sup-norm of 1.458 for the Ryzhov’s estimate of  $S_1$  and 0.953 for  $S_2$ , and 0.765 for the Maiboroda’s estimate of  $S_1$  and 0.787 for  $S_2$ .

As we have seen before, the choice of the weights can have a strong impact on the results, close weights give large values for the coefficients and therefore a large variance, which would give inadequate results. To get around this problem, one idea is to separate the data into two samples A and B, in order to force the proportion of each group (e.g. men/women) in each of these samples. In this way we can choose mixing weights that should give better results. We have chosen that in sample A there are 6000 women and 10000 men. Table 15 gives the new proportions.

Sample	Gender (Group)	Number of people	Proportion
A	M	10 000	0.625
	F	6 000	0.375
B	M	3 098	0.180376
	F	14 077	0.819622

Table 15: Proportion of each sample and group for our arranged database

We notice in Figure 3 that there are more very short breaks for sample B, while for breaks of more than 200 days, it is sample A that seems to predominate. These samples were created arbitrarily, but we can still notice their differences.

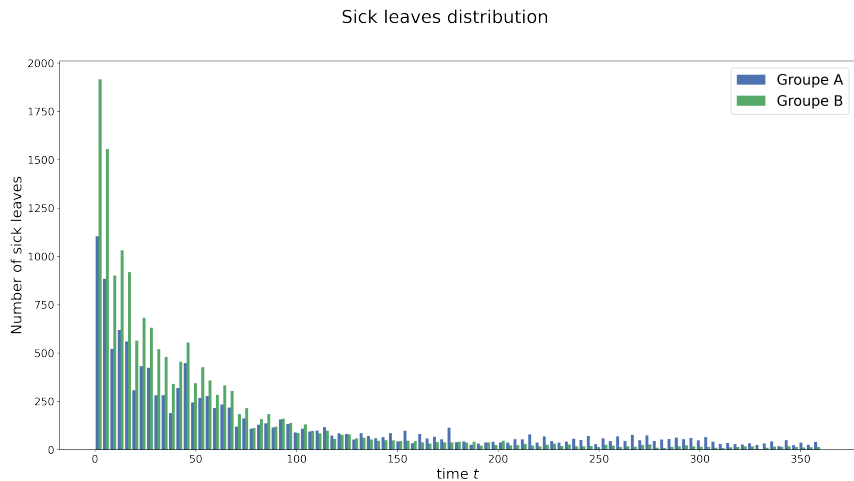


Figure 3: Sick leaves distribution

Note : Here we represent the distribution of the sick leave data. We stopped the representation at 360 days because there are only few leaves after this date.

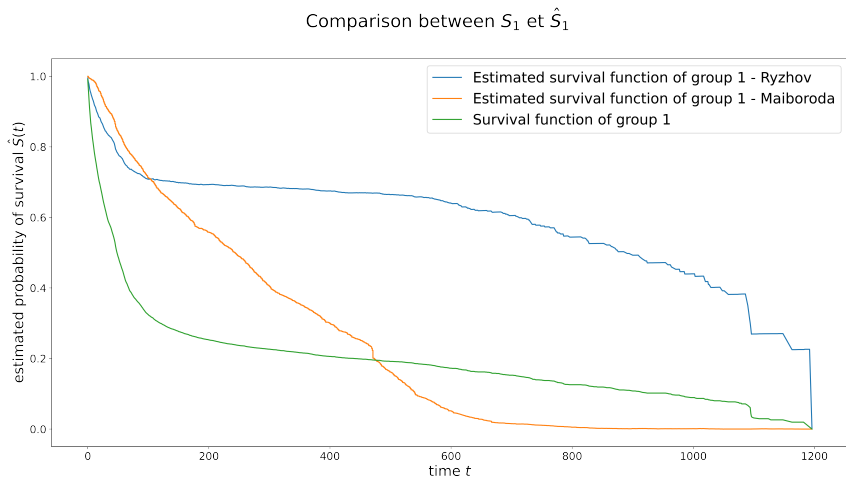


Figure 4: Estimated survival functions using Ryzhov’s and Maiboroda’s estimators

Note : The estimated survival functions using Ryzhov’s and Maiboroda’s estimators for group 1 are here shown without correction.

Figure 4 shows the results obtained. With the chosen weights, we obtain, for the Ryzhov’s coefficients :

$$M^{-1} = \begin{pmatrix} 1.84341392 & -0.84341392 \\ -0.40568987 & 1.40568987 \end{pmatrix}$$

For Maiboroda, the coefficients estimated using CVXPY are  $\tilde{a}_1(A) = 3.82218179$ ,  $\tilde{a}_2(A) = -0.84121788$ ,  $\tilde{a}_1(B) = -1.62911257$  and  $\tilde{a}_2(B) = 2.7152399$

In this case, we obtained a sup-norm equal to 0.474 for the Ryzhov’s estimate of  $S_1$  and

equal to 0.285 for  $S_2$ , and equal to 0.396 for the Maiboroda's estimate of  $S_1$  and equal to 0.234 for  $S_2$ . As we had better results with a limit of 360 days, we have done the same still choosing that in sample A there are 6000 women and 10000 men. The proportions are in this case :

Sample	Gender (Group)	Number of people	Proportion
A	M	10 000	0.625
	F	6 000	0.375
B	M	1 466	0.112795
	F	11 531	0.887205

Table 16: Proportion of each sample and group for our arranged database with a limit of 360 days

Figure 5 shows that the results are better than before. With the new weights, we obtain, for the Ryzhov's coefficients :

$$M^{-1} = \begin{pmatrix} 1.73212911 & -0.73212911 \\ -0.22021518 & 1.22021518 \end{pmatrix}$$

For Maiboroda, the coefficients estimated are  $\tilde{a}_1(A) = 3.13919642$ ,  $\tilde{a}_2(A) = -0.39913399$ ,  $\tilde{a}_1(B) = -1.6334538$  and  $\tilde{a}_2(B) = 2.72241359$ . We have a sup-norm  $\sup_{t \in R} |\hat{S}(t) - S^{(KM)}(t)|$  of 0.215 for the Ryzhov's estimate of  $S_1$  and 0.131 for  $S_2$ , and 0.201 for Maiboroda estimate of  $S_1$  and 0.117 for  $S_2$ . We notice that with selected weights and with a maximum of 360 days, the results are particularly good.

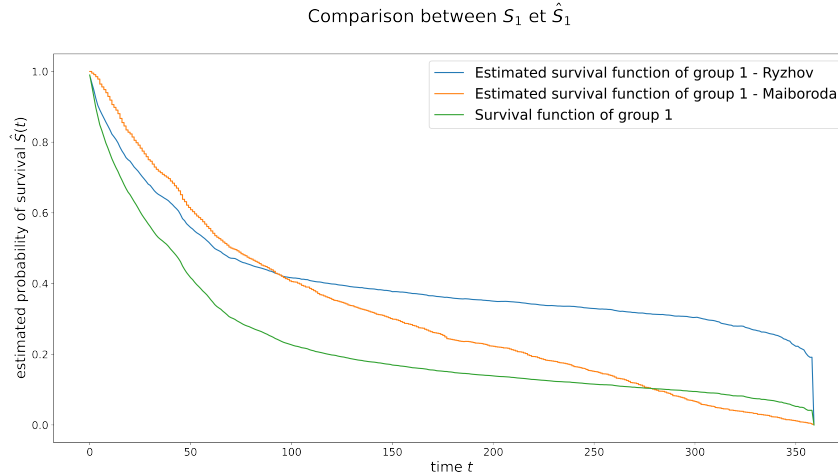


Figure 5: Estimated survival functions using Ryzhov's and Maiboroda's estimators

Note : The estimated survival functions using Ryzhov's and Maiboroda's estimators for group 1 are here shown without correction.

For the results for group 2, the figures can be found in the appendix. We notice that in the last case (with selected weights and with a maximum of 360 days), the results are particularly good.

Overall, we notice that in our empirical data case, Maiboroda’s estimator is globally better than Ryzhov’s. This result is quite different from what was obtained in the case of simulations using exponential functions. It can be explained by, first of all, the fact that the data do not follow the same law. This can therefore have an important impact on the results. Moreover, in the case with weak censoring, we had already seen that different weights gave good results for Maiboroda estimator.

## 4.2 Comparison with the results of simulated data with same characteristics

We now compare the results obtained with empirical data, with simulations having the same parameters, to know if the results remain similar. For this we will focus on the case with different weights, which, as we have seen earlier, gives better results.

For the simulation, exponential functions are again used, using the sick leaves means for each group as parameters. We have  $\lambda_1 = 174.069$  and  $\lambda_2 = 85.907$ . We use a censorship parameter  $\lambda_C = 500$ . Using this parameter, the censorship of the whole group was of 18.74%, being of 20.84% in group A and 16.79% in group B.

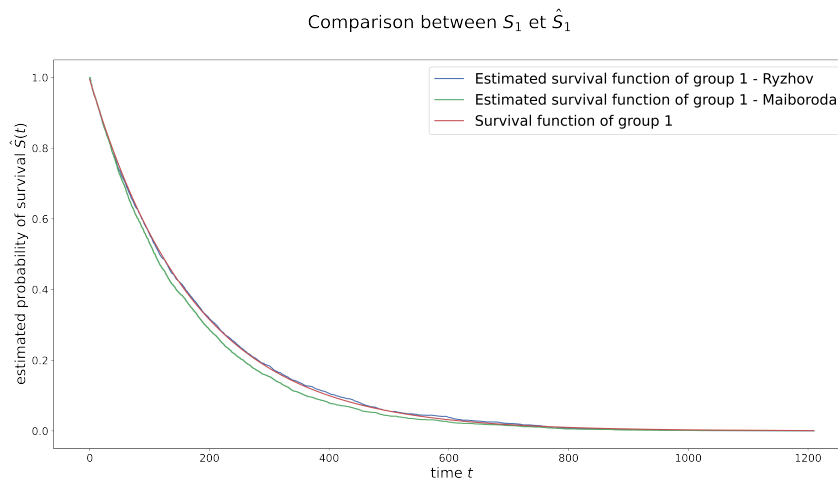


Figure 6: Estimated survival functions of simulated data using Ryzhov’s and Maiboroda’s estimators

Note : The estimated survival functions for the simulated data using Ryzhov’s and Maiboroda’s estimators for group 1 are here shown without correction.

Figure 6 shows that the results are very good for both estimators. We have a sup-norm  $\sup_{t \in \mathbb{R}} |\hat{S}(t) - S(t)|$  of 0.012 for the Ryzhov’s estimate of  $S_1$  and 0.008 for  $S_2$ . For Maiboroda, we have 0.038 for the estimate of  $S_1$  and 0.040 for  $S_2$ . The difference between the estimators is 0.0353 for group 1 and 0.0375 for group 2.

We notice that the errors are larger when the  $\lambda_C$  parameter is smaller (and thus the censoring is stronger), which is in agreement with the results obtained in the previous section. On the other hand, the results improve by decreasing the censoring, but the Ryzhov estimator remains the closest to reality with the choice of weights made.

## 5 Conclusion and open questions

We have considered a problem in actuarial sciences, in which we wanted to model sick leave for  $K=2$  groups, having some data from  $M=2$  insurance companies (samples), but not defined with certainty for confidential reasons. Having the proportion of each group for each sample, we compare two different Kaplan-Meier estimators for mixture models. We measure the information loss when modelling sick leaves in censored duration models, comparing Ryzhov's and Maiboroda's methods. We proved that the Ryzhov and Maiboroda estimators were the same in the uncensored case, but could be quite different in cas of censorship.

For simulated data, we found that Ryzhov's model gives usually best results, especially in the case where the weights are quite close together. This result remains the same when simulating data with statistical main characteristics equal to the ones of the real dataset. However, when the weights are further apart, it is the Maiboroda estimator that becomes better, especially in the case of strong censorship. Using empirical data, we found that Maiboroda estimator gives best results. The results are related to the distribution of the data. It would be interesting in a future analysis to compare these two models on different distributions, in order to understand the impact they may have on these two estimators.

To go further, now that we have compared Maiboroda's and Ryzhov's methods in the case of 2 samples A and B and 2 groups, one might ask whether or not the results remain the same when there are more data sources (samples) and/or more groups. This study would still be interesting in terms of the anonymity of the data, since we would only need to know the membership of two groups of variables and the proportion of these groups in the overall population.

## Acknowledgement

I am grateful to Christophe Pouet for fruitful discussions.

## Disclosure statement

No potential conflict of interest was reported by the author.

## Funding

The author would like to acknowledge funding from AOPS Conseil and from the ANRT (CONVENTION CIFRE N° 2021/1416).

## References

- [1] Agrawal, Akshay and Verschueren, Robin and Diamond, Steven and Boyd, Stephen. 2018. "A rewriting system for convex optimization problems". *Journal of Control and Decision*. Vol 5. 42-60.
- [2] Autin, Florent, and Christophe Pouet. 2012. "Minimax rates over Besov spaces in ill-conditioned mixture-models with varying mixing-weights"
- [3] Autin, Florent, and Christophe Pouet. 2012. "Testing means from sampling populations with undefined labels". *Statistical Methodology* 10 (1) : 151-169.
- [4] Steven Diamond and Stephen Boyd. 2016. "CVXPY : A Python-embedded modeling language for convex optimization". *Journal of Machine Learning Research*. Vol. 17. Number 83. 1-5.
- [5] J. C. Duchi, M. I. Jordan and M. J. Wainwright, "Local Privacy and Statistical Minimax Rates," 2013 IEEE 54th Annual Symposium on Foundations of Computer Science, 2013, pp. 429-438, doi: 10.1109/FOCS.2013.53.
- [6] George T. Duncan and Diane Lambert. 1986. "Disclosure-Limited Data Dissemination". *Journal of the American Statistical Association*, Vol. 81, No. 393 (Mar., 1986), pp. 10- 18
- [7] Dwork, C., F. McSherry, K. Nissim, and A. Smith. "Calibrating noise to sensitivity in private data analysis." *Theory of Cryptography Conference* , 2006, 265-284.
- [8] Kaplan E. L. and Paul Meier. 1958. "Nonparametric Estimation from Incomplete Observations". *Journal of the American Statistical Association*, Vol. 53, No. 282, pp. 457-481
- [9] Halima, Mohamed Ali Ben, Virginie Hyafi l-Solelhac, Malik Koubi and Camille Re-gaert. 2015. "Quel est l'impact du système d'indemnisation maladie sur la durée des arrêts de travail pour maladie ?" Document de travail IRDES DT n°66.
- [10] Maiboroda R.E. (1996): Estimation of components distribution by mixtures with varying concentrations. *Ukrainian Math. J.*, 48, 562-566.
- [11] Maiboroda R. and Sugakova, O.(2011) Statistics of mixtures with varying concentrations with application to DNA microarray data analysis. TECHNICAL REPORT 0106U005864-MS11
- [12] Maiboroda R., Sugakova, O., Doronin, A. (2013). "Generalized estimating equations for mixtures with varying concentrations". *The Canadian Journal of Statistics / La Revue Canadienne de Statistique*, 41(2), 217-236. <http://www.jstor.org/stable/43185131>
- [13] Maiboroda R. and Doronin A. (2015): "Testing hypotheses on moments by observations from a mixture with varying concentrations". *Modern Stochastics: Theory and Applications* 1 (2014) 195-209
- [14] Maiboroda, R. E. and Khizanov, V.G. 2015. "A Modified Kaplan-Meier estimator for a model of mixtures with varying concentrations" .*Theor. Probability and Math. Statist.*92 : 109-116.



- [15] Maiboroda, R. E. 2018. "Asymptotic normality of Kaplan–Meier estimators for mixtures with varying concentrations".*Theor. Probability and Math. Statist.*96 : 133-144.
- [16] McLachlan, Geoffrey J., et David Peel. 2000.*Finite mixture models*. T. Vol. 299.
- [17] Milhaud, X., Pommeret, D., Salhi, Y. and Vandekerkhove, P. 2020. "Semiparametric two-sample mixture components comparison test".hal-02491127.
- [18] Pölsterl, S. "scikit-survival: A Library for Time-to-Event Analysis Built on Top of scikit-learn". *Journal of Machine Learning Research*, vol. 21, no. 212, pp. 1–6, 2020.
- [19] Rodríguez, G. (2007). *Lecture Notes on Generalized Linear Models*. URL: <https://data.princeton.edu/wws509/notes/>
- [20] Ryzhov, A. YU. 2004. "Estimates of Distributions of components in a Mixture from censoring data".*Theor. Probability and Math. Statist.*69 : 167-174.

## Appendix

### Simulation results with correction for Ryzhov's and Maiboroda's estimators

We compare  $\hat{S}_1(t)$  with  $S_1(t)$  and  $\hat{S}_2(t)$  with  $S_2(t)$  for different weights, different data sizes, and different values of the censoring parameter  $\lambda_c$ . We have computed the sup-norm  $\sup_{t \in \mathbb{R}} |\hat{S}(t) - S(t)|$ . All the simulation results are given for 1000 repetitions, with the correction mentioned on section 3 for Maiboroda's method.

#### Simulation results for $n = 100$ and $\lambda_c = 40$ :

Mean of  $\sup_{t \in \mathbb{R}} |\hat{S}_1(t) - S_1(t)|$  with Ryzhov's method :

	0.0	0.1	0.2	0.3	0.4	0.5	0.6	0.7	0.8	0.9	1.0
0.0	NaN	0.699	0.539	0.418	0.346	0.295	0.258	0.231	0.212	0.198	0.189
0.1	0.696	NaN	0.679	0.501	0.393	0.322	0.273	0.239	0.216	0.197	0.190
0.2	0.533	0.667	NaN	0.643	0.475	0.364	0.297	0.254	0.219	0.203	0.184
0.3	0.422	0.510	0.647	NaN	0.620	0.435	0.335	0.263	0.228	0.203	0.188
0.4	0.342	0.393	0.466	0.610	NaN	0.572	0.396	0.297	0.237	0.211	0.191
0.5	0.296	0.320	0.368	0.434	0.583	NaN	0.518	0.346	0.260	0.215	0.190
0.6	0.260	0.278	0.296	0.334	0.389	0.523	NaN	0.468	0.298	0.221	0.187
0.7	0.228	0.238	0.250	0.271	0.293	0.349	0.469	NaN	0.394	0.238	0.187
0.8	0.216	0.218	0.222	0.231	0.243	0.259	0.294	0.393	NaN	0.294	0.189
0.9	0.198	0.202	0.201	0.201	0.209	0.211	0.221	0.242	0.298	NaN	0.187
1.0	0.190	0.190	0.190	0.190	0.189	0.186	0.185	0.188	0.188	0.187	NaN

Mean of  $\sup_{t \in \mathbb{R}} |\hat{S}_1(t) - S_1(t)|$  with Maiboroda's method :

	0.0	0.1	0.2	0.3	0.4	0.5	0.6	0.7	0.8	0.9	1.0
0.0	NaN	0.736	0.576	0.446	0.367	0.305	0.257	0.222	0.204	0.184	0.173
0.1	0.739	NaN	0.719	0.546	0.425	0.341	0.277	0.236	0.206	0.187	0.173
0.2	0.581	0.712	NaN	0.691	0.521	0.386	0.311	0.252	0.216	0.192	0.173
0.3	0.466	0.554	0.695	NaN	0.666	0.473	0.355	0.277	0.221	0.189	0.171
0.4	0.361	0.424	0.507	0.656	NaN	0.618	0.430	0.306	0.235	0.198	0.173
0.5	0.310	0.335	0.391	0.469	0.619	NaN	0.555	0.371	0.262	0.204	0.175
0.6	0.259	0.282	0.307	0.353	0.425	0.573	NaN	0.507	0.303	0.222	0.176
0.7	0.225	0.236	0.256	0.287	0.307	0.372	0.506	NaN	0.428	0.246	0.176
0.8	0.204	0.212	0.219	0.227	0.242	0.272	0.316	0.427	NaN	0.323	0.179
0.9	0.190	0.189	0.192	0.194	0.200	0.205	0.222	0.248	0.315	NaN	0.186
1.0	0.180	0.182	0.179	0.180	0.180	0.181	0.180	0.183	0.187	0.186	NaN

Mean of  $\sup_{t \in \mathbb{R}} |\hat{S}_2(t) - S_2(t)|$  with Ryzhov's method :

	0.0	0.1	0.2	0.3	0.4	0.5	0.6	0.7	0.8	0.9	1.0
0.0	NaN	0.150	0.150	0.149	0.151	0.153	0.148	0.149	0.151	0.149	0.151
0.1	0.153	NaN	0.268	0.210	0.190	0.179	0.176	0.169	0.166	0.161	0.162
0.2	0.152	0.276	NaN	0.364	0.277	0.229	0.208	0.200	0.191	0.190	0.181
0.3	0.151	0.210	0.363	NaN	0.439	0.325	0.271	0.240	0.230	0.212	0.203
0.4	0.151	0.192	0.271	0.443	NaN	0.495	0.360	0.306	0.268	0.254	0.233
0.5	0.150	0.180	0.228	0.321	0.486	NaN	0.534	0.400	0.335	0.298	0.270
0.6	0.148	0.174	0.214	0.274	0.364	0.524	NaN	0.560	0.431	0.366	0.316
0.7	0.151	0.169	0.197	0.243	0.307	0.397	0.570	NaN	0.585	0.451	0.384
0.8	0.152	0.167	0.192	0.230	0.275	0.331	0.425	0.597	NaN	0.598	0.485
0.9	0.150	0.162	0.187	0.213	0.250	0.290	0.360	0.452	0.622	NaN	0.629
1.0	0.151	0.164	0.184	0.206	0.236	0.273	0.319	0.379	0.471	0.638	NaN

Mean of  $\sup_{t \in \mathbb{R}} |\hat{S}_2(t) - S_2(t)|$  with Maiboroda's method :

	0.0	0.1	0.2	0.3	0.4	0.5	0.6	0.7	0.8	0.9	1.0
0.0	NaN	0.158	0.157	0.159	0.165	0.165	0.165	0.173	0.173	0.176	0.181
0.1	0.158	NaN	0.289	0.225	0.202	0.193	0.188	0.186	0.187	0.189	0.191
0.2	0.163	0.288	NaN	0.401	0.299	0.250	0.232	0.223	0.214	0.213	0.206
0.3	0.163	0.226	0.397	NaN	0.471	0.349	0.298	0.266	0.253	0.242	0.237
0.4	0.168	0.207	0.293	0.475	NaN	0.529	0.392	0.342	0.304	0.279	0.262
0.5	0.168	0.193	0.250	0.350	0.527	NaN	0.579	0.436	0.365	0.326	0.305
0.6	0.174	0.194	0.234	0.298	0.397	0.567	NaN	0.597	0.461	0.397	0.352
0.7	0.175	0.191	0.222	0.269	0.334	0.426	0.604	NaN	0.620	0.486	0.425
0.8	0.187	0.196	0.221	0.254	0.298	0.367	0.464	0.629	NaN	0.640	0.516
0.9	0.188	0.194	0.216	0.241	0.277	0.320	0.404	0.495	0.659	NaN	0.652
1.0	0.195	0.197	0.214	0.236	0.271	0.309	0.360	0.419	0.523	0.673	NaN

**Simulation results for  $n = 100$  and  $\lambda_c = 200$  :**

Mean of  $\sup_{t \in \mathbb{R}} |\hat{S}_1(t) - S_1(t)|$  with Ryzhov's method :

	0.0	0.1	0.2	0.3	0.4	0.5	0.6	0.7	0.8	0.9	1.0
0.0	NaN	0.690	0.493	0.376	0.298	0.239	0.200	0.172	0.149	0.134	0.122
0.1	0.669	NaN	0.660	0.453	0.344	0.263	0.215	0.180	0.157	0.134	0.123
0.2	0.494	0.663	NaN	0.625	0.431	0.309	0.236	0.190	0.159	0.138	0.122
0.3	0.372	0.458	0.615	NaN	0.592	0.388	0.277	0.211	0.169	0.139	0.120
0.4	0.293	0.341	0.435	0.583	NaN	0.538	0.349	0.239	0.182	0.141	0.121
0.5	0.234	0.269	0.310	0.388	0.538	NaN	0.484	0.290	0.201	0.151	0.121
0.6	0.201	0.213	0.234	0.274	0.346	0.483	NaN	0.417	0.241	0.160	0.118
0.7	0.175	0.182	0.193	0.208	0.237	0.301	0.424	NaN	0.346	0.182	0.121
0.8	0.149	0.152	0.158	0.170	0.182	0.200	0.241	0.342	NaN	0.242	0.121
0.9	0.136	0.136	0.136	0.141	0.145	0.151	0.161	0.182	0.238	NaN	0.120
1.0	0.121	0.119	0.122	0.122	0.120	0.119	0.119	0.120	0.122	0.120	NaN

Mean of  $\sup_{t \in \mathbb{R}} |\hat{S}_1(t) - S_1(t)|$  with Maiboroda's method :

	0.0	0.1	0.2	0.3	0.4	0.5	0.6	0.7	0.8	0.9	1.0
0.0	NaN	0.710	0.513	0.382	0.304	0.241	0.201	0.169	0.151	0.134	0.123
0.1	0.699	NaN	0.685	0.470	0.352	0.269	0.219	0.181	0.156	0.134	0.127
0.2	0.514	0.684	NaN	0.653	0.447	0.319	0.241	0.190	0.160	0.138	0.123
0.3	0.383	0.480	0.643	NaN	0.613	0.400	0.283	0.214	0.170	0.139	0.124
0.4	0.300	0.353	0.452	0.600	NaN	0.557	0.355	0.244	0.183	0.143	0.123
0.5	0.239	0.272	0.320	0.398	0.564	NaN	0.507	0.299	0.204	0.151	0.124
0.6	0.205	0.216	0.240	0.277	0.361	0.494	NaN	0.431	0.244	0.161	0.123
0.7	0.176	0.184	0.196	0.210	0.245	0.311	0.439	NaN	0.353	0.182	0.125
0.8	0.151	0.154	0.160	0.168	0.184	0.201	0.245	0.350	NaN	0.247	0.126
0.9	0.138	0.138	0.139	0.143	0.146	0.152	0.164	0.187	0.243	NaN	0.124
1.0	0.123	0.123	0.122	0.125	0.123	0.122	0.122	0.124	0.124	0.122	NaN

Mean of  $\sup_{t \in \mathbb{R}} |\hat{S}_2(t) - S_2(t)|$  with Ryzhov's method :

	0.0	0.1	0.2	0.3	0.4	0.5	0.6	0.7	0.8	0.9	1.0
0.0	NaN	0.116	0.117	0.115	0.116	0.117	0.116	0.117	0.119	0.116	0.117
0.1	0.116	NaN	0.237	0.176	0.157	0.144	0.141	0.136	0.134	0.129	0.130
0.2	0.117	0.234	NaN	0.330	0.236	0.197	0.179	0.166	0.156	0.149	0.147
0.3	0.116	0.176	0.328	NaN	0.411	0.283	0.235	0.209	0.187	0.178	0.172
0.4	0.115	0.157	0.232	0.412	NaN	0.466	0.335	0.267	0.232	0.211	0.195
0.5	0.117	0.148	0.196	0.289	0.468	NaN	0.503	0.372	0.301	0.258	0.229
0.6	0.117	0.141	0.176	0.237	0.336	0.515	NaN	0.546	0.405	0.326	0.288
0.7	0.113	0.138	0.166	0.207	0.270	0.376	0.522	NaN	0.575	0.428	0.349
0.8	0.116	0.136	0.155	0.188	0.241	0.306	0.395	0.578	NaN	0.604	0.452
0.9	0.115	0.132	0.150	0.178	0.213	0.258	0.325	0.435	0.595	NaN	0.621
1.0	0.117	0.133	0.146	0.167	0.195	0.235	0.285	0.352	0.450	0.615	NaN

Mean of  $\sup_{t \in \mathbb{R}} |\hat{S}_2(t) - S_2(t)|$  with Maiboroda's method :

	0.0	0.1	0.2	0.3	0.4	0.5	0.6	0.7	0.8	0.9	1.0
0.0	NaN	0.121	0.121	0.121	0.122	0.122	0.123	0.125	0.126	0.128	0.129
0.1	0.122	NaN	0.240	0.179	0.161	0.149	0.145	0.145	0.143	0.141	0.140
0.2	0.121	0.238	NaN	0.339	0.244	0.208	0.183	0.171	0.162	0.159	0.158
0.3	0.120	0.180	0.339	NaN	0.424	0.293	0.243	0.215	0.197	0.186	0.182
0.4	0.121	0.159	0.237	0.429	NaN	0.478	0.344	0.279	0.244	0.220	0.207
0.5	0.122	0.151	0.202	0.297	0.479	NaN	0.519	0.383	0.309	0.269	0.240
0.6	0.122	0.144	0.181	0.244	0.344	0.530	NaN	0.567	0.409	0.343	0.298
0.7	0.119	0.143	0.170	0.213	0.283	0.385	0.544	NaN	0.591	0.441	0.366
0.8	0.121	0.140	0.160	0.192	0.246	0.318	0.407	0.597	NaN	0.616	0.466
0.9	0.122	0.138	0.158	0.186	0.220	0.267	0.339	0.446	0.613	NaN	0.640
1.0	0.123	0.138	0.152	0.177	0.204	0.244	0.295	0.362	0.470	0.625	NaN

**Simulation results for  $n = 100$  and  $\lambda_c = 1000$  :**

Mean of  $\sup_{t \in \mathbb{R}} |\hat{S}_1(t) - S_1(t)|$  with Ryzhov's method :

	0.0	0.1	0.2	0.3	0.4	0.5	0.6	0.7	0.8	0.9	1.0
0.0	NaN	0.678	0.480	0.363	0.280	0.224	0.187	0.164	0.142	0.125	0.111
0.1	0.673	NaN	0.639	0.451	0.335	0.254	0.203	0.171	0.146	0.127	0.113
0.2	0.482	0.649	NaN	0.619	0.418	0.299	0.232	0.183	0.149	0.129	0.112
0.3	0.360	0.448	0.617	NaN	0.584	0.374	0.269	0.201	0.159	0.131	0.112
0.4	0.286	0.332	0.405	0.580	NaN	0.519	0.331	0.228	0.171	0.136	0.112
0.5	0.228	0.257	0.301	0.372	0.535	NaN	0.473	0.284	0.191	0.143	0.111
0.6	0.191	0.206	0.229	0.262	0.330	0.480	NaN	0.419	0.228	0.154	0.113
0.7	0.163	0.172	0.182	0.203	0.230	0.290	0.412	NaN	0.338	0.172	0.115
0.8	0.140	0.145	0.149	0.157	0.171	0.191	0.230	0.334	NaN	0.230	0.115
0.9	0.125	0.127	0.127	0.131	0.135	0.141	0.149	0.170	0.227	NaN	0.111
1.0	0.112	0.112	0.115	0.112	0.113	0.112	0.111	0.112	0.115	0.113	NaN

Mean of  $\sup_{t \in \mathbb{R}} |\hat{S}_1(t) - S_1(t)|$  with Maiboroda's method :

	0.0	0.1	0.2	0.3	0.4	0.5	0.6	0.7	0.8	0.9	1.0
0.0	NaN	0.696	0.496	0.373	0.283	0.226	0.188	0.165	0.144	0.127	0.117
0.1	0.694	NaN	0.657	0.464	0.342	0.258	0.205	0.174	0.149	0.130	0.116
0.2	0.498	0.672	NaN	0.638	0.429	0.304	0.234	0.185	0.152	0.130	0.116
0.3	0.366	0.460	0.633	NaN	0.598	0.384	0.272	0.203	0.160	0.134	0.116
0.4	0.292	0.341	0.417	0.597	NaN	0.530	0.340	0.231	0.172	0.138	0.116
0.5	0.233	0.262	0.306	0.383	0.545	NaN	0.486	0.287	0.194	0.145	0.115
0.6	0.192	0.208	0.232	0.266	0.335	0.490	NaN	0.426	0.232	0.154	0.118
0.7	0.164	0.173	0.184	0.206	0.232	0.295	0.422	NaN	0.344	0.173	0.120
0.8	0.142	0.147	0.151	0.158	0.172	0.193	0.231	0.338	NaN	0.233	0.119
0.9	0.127	0.129	0.129	0.132	0.137	0.143	0.150	0.172	0.228	NaN	0.116
1.0	0.114	0.115	0.118	0.117	0.117	0.116	0.115	0.116	0.118	0.117	NaN

Mean of  $\sup_{t \in \mathbb{R}} |\hat{S}_2(t) - S_2(t)|$  with Ryzhov's method :

	0.0	0.1	0.2	0.3	0.4	0.5	0.6	0.7	0.8	0.9	1.0
0.0	NaN	0.111	0.112	0.112	0.115	0.111	0.110	0.112	0.111	0.111	0.111
0.1	0.111	NaN	0.230	0.170	0.152	0.141	0.133	0.130	0.127	0.128	0.124
0.2	0.113	0.227	NaN	0.331	0.227	0.192	0.170	0.157	0.151	0.142	0.145
0.3	0.113	0.172	0.320	NaN	0.399	0.278	0.227	0.201	0.184	0.171	0.162
0.4	0.111	0.151	0.225	0.402	NaN	0.467	0.322	0.264	0.229	0.207	0.189
0.5	0.110	0.140	0.189	0.279	0.463	NaN	0.506	0.366	0.292	0.252	0.223
0.6	0.115	0.134	0.172	0.226	0.325	0.504	NaN	0.541	0.396	0.322	0.279
0.7	0.111	0.132	0.163	0.200	0.263	0.365	0.538	NaN	0.566	0.420	0.345
0.8	0.113	0.128	0.153	0.182	0.226	0.291	0.395	0.571	NaN	0.591	0.453
0.9	0.113	0.125	0.146	0.170	0.205	0.251	0.317	0.429	0.589	NaN	0.614
1.0	0.112	0.124	0.141	0.164	0.191	0.222	0.279	0.348	0.453	0.608	NaN

Mean of  $\sup_{t \in \mathbb{R}} |\hat{S}_2(t) - S_2(t)|$  with Maiboroda's method :

	0.0	0.1	0.2	0.3	0.4	0.5	0.6	0.7	0.8	0.9	1.0
0.0	NaN	0.116	0.117	0.118	0.119	0.116	0.115	0.117	0.117	0.116	0.117
0.1	0.116	NaN	0.232	0.173	0.154	0.143	0.136	0.134	0.129	0.131	0.128
0.2	0.117	0.230	NaN	0.336	0.230	0.194	0.174	0.159	0.154	0.144	0.147
0.3	0.116	0.175	0.325	NaN	0.408	0.280	0.232	0.203	0.185	0.172	0.165
0.4	0.116	0.153	0.229	0.407	NaN	0.469	0.328	0.267	0.234	0.209	0.192
0.5	0.114	0.143	0.191	0.282	0.473	NaN	0.515	0.370	0.298	0.257	0.228
0.6	0.119	0.138	0.174	0.229	0.327	0.514	NaN	0.546	0.401	0.324	0.281
0.7	0.115	0.134	0.164	0.203	0.265	0.369	0.542	NaN	0.576	0.426	0.352
0.8	0.116	0.131	0.156	0.184	0.228	0.295	0.401	0.581	NaN	0.605	0.455
0.9	0.116	0.129	0.148	0.172	0.207	0.253	0.319	0.430	0.603	NaN	0.621
1.0	0.117	0.127	0.143	0.166	0.193	0.225	0.284	0.348	0.450	0.623	NaN

**Simulation results for  $n = 1000$  and  $\lambda_c = 40$  :**

Mean of  $\sup_{t \in \mathbb{R}} |\hat{S}_1(t) - S_1(t)|$  with Ryzhov's method :

	0.0	0.1	0.2	0.3	0.4	0.5	0.6	0.7	0.8	0.9	1.0
0.0	NaN	0.452	0.273	0.190	0.147	0.121	0.105	0.093	0.086	0.079	0.075
0.1	0.445	NaN	0.411	0.245	0.173	0.136	0.110	0.097	0.086	0.080	0.073
0.2	0.264	0.412	NaN	0.389	0.225	0.160	0.123	0.102	0.090	0.079	0.074
0.3	0.192	0.250	0.379	NaN	0.354	0.201	0.144	0.111	0.092	0.081	0.074
0.4	0.146	0.173	0.225	0.350	NaN	0.312	0.180	0.125	0.098	0.082	0.073
0.5	0.120	0.136	0.163	0.199	0.310	NaN	0.280	0.155	0.107	0.084	0.074
0.6	0.105	0.113	0.123	0.143	0.180	0.275	NaN	0.232	0.127	0.090	0.074
0.7	0.093	0.095	0.102	0.110	0.123	0.152	0.229	NaN	0.182	0.097	0.074
0.8	0.085	0.088	0.088	0.091	0.095	0.108	0.127	0.184	NaN	0.128	0.073
0.9	0.079	0.080	0.081	0.080	0.081	0.086	0.090	0.100	0.130	NaN	0.073
1.0	0.074	0.074	0.074	0.073	0.073	0.073	0.074	0.074	0.073	0.073	NaN

Mean of  $\sup_{t \in \mathbb{R}} |\hat{S}_1(t) - S_1(t)|$  with Maiboroda's method :

	0.0	0.1	0.2	0.3	0.4	0.5	0.6	0.7	0.8	0.9	1.0
0.0	NaN	0.498	0.304	0.214	0.171	0.145	0.129	0.116	0.110	0.103	0.097
0.1	0.485	NaN	0.461	0.271	0.195	0.158	0.132	0.116	0.107	0.099	0.093
0.2	0.298	0.464	NaN	0.423	0.249	0.175	0.139	0.117	0.105	0.096	0.087
0.3	0.216	0.280	0.420	NaN	0.388	0.222	0.157	0.123	0.103	0.091	0.084
0.4	0.166	0.193	0.242	0.387	NaN	0.343	0.199	0.138	0.107	0.090	0.079
0.5	0.137	0.149	0.176	0.218	0.342	NaN	0.306	0.165	0.115	0.089	0.077
0.6	0.118	0.125	0.135	0.153	0.188	0.301	NaN	0.257	0.135	0.093	0.073
0.7	0.104	0.107	0.110	0.118	0.133	0.165	0.252	NaN	0.194	0.102	0.072
0.8	0.094	0.096	0.094	0.098	0.102	0.114	0.135	0.198	NaN	0.136	0.072
0.9	0.086	0.086	0.084	0.083	0.085	0.088	0.091	0.102	0.138	NaN	0.073
1.0	0.081	0.079	0.077	0.076	0.074	0.074	0.073	0.073	0.074	0.073	NaN

Mean of  $\sup_{t \in \mathbb{R}} |\hat{S}_2(t) - S_2(t)|$  with Ryzhov's method :

	0.0	0.1	0.2	0.3	0.4	0.5	0.6	0.7	0.8	0.9	1.0
0.0	NaN	0.053	0.052	0.053	0.052	0.052	0.052	0.052	0.052	0.053	0.053
0.1	0.052	NaN	0.107	0.080	0.070	0.066	0.063	0.061	0.059	0.059	0.058
0.2	0.053	0.107	NaN	0.162	0.107	0.090	0.082	0.074	0.072	0.069	0.067
0.3	0.053	0.081	0.158	NaN	0.210	0.136	0.110	0.097	0.088	0.082	0.078
0.4	0.053	0.071	0.108	0.209	NaN	0.246	0.161	0.129	0.111	0.100	0.092
0.5	0.053	0.066	0.091	0.136	0.251	NaN	0.291	0.186	0.147	0.122	0.108
0.6	0.052	0.064	0.080	0.109	0.165	0.285	NaN	0.315	0.208	0.162	0.139
0.7	0.051	0.061	0.075	0.097	0.126	0.187	0.312	NaN	0.343	0.226	0.177
0.8	0.052	0.060	0.071	0.087	0.109	0.148	0.208	0.343	NaN	0.369	0.242
0.9	0.052	0.059	0.069	0.082	0.100	0.126	0.163	0.227	0.373	NaN	0.392
1.0	0.052	0.058	0.067	0.077	0.092	0.113	0.136	0.176	0.246	0.393	NaN

Mean of  $\sup_{t \in \mathbb{R}} |\hat{S}_2(t) - S_2(t)|$  with Maiboroda's method :

	0.0	0.1	0.2	0.3	0.4	0.5	0.6	0.7	0.8	0.9	1.0
0.0	NaN	0.054	0.055	0.057	0.059	0.062	0.064	0.069	0.075	0.079	0.084
0.1	0.055	NaN	0.115	0.086	0.078	0.077	0.078	0.078	0.082	0.085	0.090
0.2	0.057	0.116	NaN	0.174	0.121	0.103	0.097	0.093	0.096	0.096	0.101
0.3	0.061	0.089	0.175	NaN	0.229	0.156	0.129	0.117	0.113	0.111	0.111
0.4	0.065	0.081	0.121	0.233	NaN	0.276	0.188	0.156	0.140	0.132	0.130
0.5	0.068	0.079	0.108	0.154	0.282	NaN	0.329	0.214	0.181	0.158	0.149
0.6	0.074	0.082	0.099	0.129	0.185	0.325	NaN	0.358	0.244	0.199	0.178
0.7	0.077	0.085	0.099	0.120	0.153	0.216	0.361	NaN	0.390	0.263	0.220
0.8	0.082	0.089	0.098	0.116	0.140	0.180	0.243	0.391	NaN	0.417	0.284
0.9	0.089	0.093	0.104	0.116	0.134	0.160	0.201	0.269	0.416	NaN	0.448
1.0	0.097	0.099	0.104	0.115	0.131	0.148	0.177	0.219	0.291	0.439	NaN

**Simulation results for  $n = 1000$  and  $\lambda_c = 200$  :**

Mean of  $\sup_{t \in \mathbb{R}} |\hat{S}_1(t) - S_1(t)|$  with Ryzhov's method :

	0.0	0.1	0.2	0.3	0.4	0.5	0.6	0.7	0.8	0.9	1.0
0.0	NaN	0.393	0.216	0.150	0.110	0.087	0.071	0.060	0.051	0.045	0.041
0.1	0.393	NaN	0.370	0.201	0.133	0.097	0.078	0.063	0.053	0.045	0.041
0.2	0.221	0.365	NaN	0.336	0.175	0.117	0.085	0.069	0.055	0.046	0.041
0.3	0.147	0.195	0.336	NaN	0.301	0.159	0.104	0.075	0.059	0.048	0.041
0.4	0.110	0.136	0.179	0.299	NaN	0.259	0.136	0.089	0.063	0.049	0.040
0.5	0.085	0.100	0.119	0.158	0.268	NaN	0.220	0.110	0.072	0.052	0.041
0.6	0.070	0.077	0.087	0.103	0.135	0.225	NaN	0.180	0.088	0.056	0.041
0.7	0.059	0.063	0.068	0.076	0.088	0.112	0.182	NaN	0.139	0.063	0.040
0.8	0.051	0.053	0.055	0.059	0.062	0.072	0.089	0.135	NaN	0.088	0.041
0.9	0.045	0.046	0.046	0.048	0.050	0.052	0.056	0.063	0.088	NaN	0.040
1.0	0.041	0.041	0.041	0.041	0.041	0.041	0.041	0.041	0.041	0.041	NaN

Mean of  $\sup_{t \in \mathbb{R}} |\hat{S}_1(t) - S_1(t)|$  with Maiboroda's method :

	0.0	0.1	0.2	0.3	0.4	0.5	0.6	0.7	0.8	0.9	1.0
0.0	NaN	0.398	0.222	0.153	0.114	0.090	0.074	0.063	0.055	0.049	0.045
0.1	0.407	NaN	0.382	0.205	0.137	0.100	0.079	0.067	0.056	0.049	0.045
0.2	0.226	0.374	NaN	0.341	0.181	0.119	0.087	0.071	0.057	0.049	0.043
0.3	0.153	0.200	0.343	NaN	0.311	0.160	0.103	0.075	0.061	0.050	0.043
0.4	0.112	0.139	0.183	0.311	NaN	0.267	0.138	0.089	0.064	0.051	0.043
0.5	0.089	0.101	0.121	0.162	0.275	NaN	0.222	0.111	0.073	0.054	0.042
0.6	0.075	0.080	0.090	0.105	0.135	0.230	NaN	0.183	0.088	0.056	0.042
0.7	0.064	0.067	0.070	0.078	0.089	0.114	0.185	NaN	0.140	0.064	0.041
0.8	0.055	0.058	0.058	0.061	0.065	0.073	0.089	0.135	NaN	0.087	0.042
0.9	0.050	0.051	0.050	0.050	0.051	0.053	0.056	0.064	0.088	NaN	0.041
1.0	0.047	0.045	0.046	0.044	0.043	0.042	0.042	0.042	0.041	0.041	NaN

Mean of  $\sup_{t \in \mathbb{R}} |\hat{S}_2(t) - S_2(t)|$  with Ryzhov's method :

	0.0	0.1	0.2	0.3	0.4	0.5	0.6	0.7	0.8	0.9	1.0
0.0	NaN	0.040	0.039	0.040	0.039	0.040	0.040	0.040	0.039	0.040	0.039
0.1	0.039	NaN	0.086	0.061	0.054	0.049	0.049	0.047	0.046	0.045	0.044
0.2	0.039	0.086	NaN	0.134	0.085	0.069	0.061	0.058	0.055	0.052	0.051
0.3	0.039	0.061	0.135	NaN	0.177	0.109	0.086	0.074	0.068	0.062	0.058
0.4	0.039	0.055	0.086	0.175	NaN	0.216	0.133	0.105	0.087	0.078	0.070
0.5	0.040	0.049	0.070	0.111	0.219	NaN	0.251	0.156	0.120	0.098	0.087
0.6	0.040	0.048	0.062	0.086	0.133	0.255	NaN	0.284	0.178	0.132	0.113
0.7	0.040	0.047	0.057	0.074	0.103	0.154	0.287	NaN	0.321	0.194	0.146
0.8	0.039	0.046	0.054	0.067	0.086	0.118	0.178	0.310	NaN	0.334	0.216
0.9	0.039	0.045	0.052	0.062	0.078	0.098	0.134	0.194	0.338	NaN	0.362
1.0	0.039	0.044	0.050	0.058	0.072	0.087	0.111	0.146	0.211	0.363	NaN

Mean of  $\sup_{t \in \mathbb{R}} |\hat{S}_2(t) - S_2(t)|$  with Maiboroda's method :

	0.0	0.1	0.2	0.3	0.4	0.5	0.6	0.7	0.8	0.9	1.0
0.0	NaN	0.040	0.041	0.042	0.042	0.043	0.044	0.045	0.046	0.048	0.051
0.1	0.040	NaN	0.088	0.063	0.056	0.053	0.052	0.053	0.052	0.053	0.054
0.2	0.040	0.087	NaN	0.136	0.087	0.073	0.065	0.062	0.061	0.060	0.060
0.3	0.040	0.061	0.136	NaN	0.183	0.112	0.090	0.079	0.075	0.071	0.068
0.4	0.040	0.056	0.088	0.182	NaN	0.223	0.139	0.109	0.093	0.085	0.079
0.5	0.041	0.052	0.072	0.116	0.225	NaN	0.259	0.163	0.125	0.108	0.096
0.6	0.041	0.050	0.064	0.090	0.137	0.267	NaN	0.292	0.185	0.140	0.120
0.7	0.042	0.049	0.059	0.078	0.106	0.161	0.300	NaN	0.332	0.203	0.156
0.8	0.042	0.049	0.056	0.071	0.091	0.124	0.185	0.322	NaN	0.349	0.227
0.9	0.042	0.048	0.056	0.066	0.082	0.103	0.139	0.205	0.352	NaN	0.376
1.0	0.043	0.048	0.054	0.063	0.077	0.093	0.117	0.155	0.224	0.373	NaN



**Simulation results for  $n = 1000$  and  $\lambda_c = 1000$  :**

Mean of  $\sup_{t \in \mathbb{R}} |\hat{S}_1(t) - S_1(t)|$  with Ryzhov's method :

	0.0	0.1	0.2	0.3	0.4	0.5	0.6	0.7	0.8	0.9	1.0
0.0	NaN	0.384	0.210	0.143	0.105	0.084	0.065	0.057	0.048	0.043	0.039
0.1	0.386	NaN	0.348	0.197	0.127	0.092	0.073	0.061	0.050	0.043	0.038
0.2	0.211	0.351	NaN	0.321	0.170	0.112	0.081	0.066	0.051	0.044	0.038
0.3	0.143	0.188	0.323	NaN	0.292	0.150	0.098	0.070	0.055	0.044	0.038
0.4	0.104	0.128	0.173	0.285	NaN	0.250	0.128	0.083	0.060	0.047	0.038
0.5	0.083	0.092	0.114	0.151	0.252	NaN	0.217	0.106	0.066	0.049	0.038
0.6	0.067	0.073	0.082	0.098	0.128	0.214	NaN	0.169	0.083	0.052	0.038
0.7	0.057	0.061	0.065	0.070	0.082	0.106	0.171	NaN	0.128	0.060	0.039
0.8	0.047	0.050	0.053	0.055	0.059	0.067	0.083	0.128	NaN	0.081	0.038
0.9	0.043	0.044	0.044	0.045	0.046	0.048	0.051	0.060	0.084	NaN	0.038
1.0	0.038	0.038	0.038	0.038	0.037	0.038	0.038	0.038	0.038	0.039	NaN

Mean of  $\sup_{t \in \mathbb{R}} |\hat{S}_1(t) - S_1(t)|$  with Maiboroda's method :

	0.0	0.1	0.2	0.3	0.4	0.5	0.6	0.7	0.8	0.9	1.0
0.0	NaN	0.389	0.211	0.144	0.106	0.084	0.066	0.057	0.049	0.043	0.039
0.1	0.391	NaN	0.353	0.196	0.127	0.093	0.073	0.061	0.051	0.043	0.039
0.2	0.212	0.357	NaN	0.326	0.172	0.112	0.080	0.065	0.052	0.044	0.039
0.3	0.143	0.189	0.327	NaN	0.295	0.152	0.098	0.071	0.055	0.045	0.038
0.4	0.104	0.129	0.174	0.287	NaN	0.255	0.127	0.084	0.060	0.047	0.039
0.5	0.083	0.093	0.114	0.151	0.255	NaN	0.219	0.107	0.066	0.049	0.038
0.6	0.067	0.074	0.083	0.098	0.127	0.215	NaN	0.170	0.083	0.053	0.038
0.7	0.057	0.061	0.065	0.070	0.083	0.107	0.173	NaN	0.130	0.060	0.039
0.8	0.048	0.050	0.053	0.055	0.060	0.067	0.083	0.129	NaN	0.081	0.038
0.9	0.043	0.045	0.044	0.046	0.046	0.048	0.052	0.060	0.084	NaN	0.039
1.0	0.038	0.039	0.038	0.038	0.038	0.038	0.038	0.039	0.039	0.039	NaN

Mean of  $\sup_{t \in \mathbb{R}} |\hat{S}_2(t) - S_2(t)|$  with Ryzhov's method :

	0.0	0.1	0.2	0.3	0.4	0.5	0.6	0.7	0.8	0.9	1.0
0.0	NaN	0.038	0.037	0.038	0.038	0.038	0.038	0.038	0.038	0.038	0.038
0.1	0.038	NaN	0.081	0.060	0.052	0.048	0.046	0.045	0.044	0.042	0.043
0.2	0.038	0.082	NaN	0.129	0.083	0.067	0.060	0.056	0.052	0.050	0.048
0.3	0.038	0.059	0.127	NaN	0.173	0.105	0.084	0.071	0.064	0.060	0.056
0.4	0.038	0.053	0.083	0.171	NaN	0.210	0.128	0.098	0.083	0.074	0.067
0.5	0.038	0.048	0.067	0.105	0.208	NaN	0.249	0.150	0.112	0.094	0.084
0.6	0.038	0.047	0.059	0.083	0.128	0.250	NaN	0.278	0.172	0.128	0.107
0.7	0.038	0.046	0.055	0.071	0.097	0.150	0.277	NaN	0.308	0.189	0.142
0.8	0.038	0.044	0.052	0.064	0.083	0.113	0.170	0.308	NaN	0.329	0.207
0.9	0.038	0.043	0.049	0.058	0.073	0.095	0.129	0.189	0.335	NaN	0.358
1.0	0.037	0.042	0.048	0.056	0.067	0.082	0.106	0.142	0.209	0.356	NaN

Mean of  $\sup_{t \in \mathbb{R}} |\hat{S}_2(t) - S_2(t)|$  with Maiboroda's method :

	0.0	0.1	0.2	0.3	0.4	0.5	0.6	0.7	0.8	0.9	1.0
0.0	NaN	0.039	0.038	0.038	0.039	0.039	0.039	0.039	0.039	0.039	0.039
0.1	0.038	NaN	0.082	0.060	0.052	0.049	0.047	0.046	0.044	0.044	0.044
0.2	0.038	0.083	NaN	0.130	0.083	0.068	0.060	0.056	0.053	0.051	0.049
0.3	0.038	0.060	0.127	NaN	0.174	0.107	0.084	0.072	0.065	0.061	0.057
0.4	0.038	0.053	0.084	0.172	NaN	0.213	0.129	0.100	0.084	0.075	0.068
0.5	0.039	0.048	0.068	0.105	0.211	NaN	0.252	0.151	0.113	0.095	0.086
0.6	0.038	0.047	0.060	0.084	0.129	0.249	NaN	0.280	0.175	0.130	0.107
0.7	0.039	0.046	0.056	0.071	0.098	0.152	0.279	NaN	0.313	0.191	0.145
0.8	0.038	0.044	0.052	0.065	0.084	0.114	0.172	0.311	NaN	0.333	0.211
0.9	0.038	0.044	0.049	0.059	0.074	0.096	0.130	0.191	0.338	NaN	0.363
1.0	0.038	0.043	0.049	0.057	0.068	0.083	0.107	0.144	0.213	0.359	NaN

## Simulation results with correction for Ryzhov's and Maiboroda's estimators for discret data

We compare  $\hat{S}_1(t)$  with  $S_1(t)$  and  $\hat{S}_2(t)$  with  $S_2(t)$  for different weights, different data sizes, and different values of the censoring parameter  $\lambda_c$ . We have computed the sup-norm  $\sup_{t \in \mathbb{R}} |\hat{S}(t) - S(t)|$ . All the simulation results are given for 1000 repetitions, with the correction mentioned on section 3 for Maiboroda's method, and for discret data.

**Simulation results for  $n = 100$  and  $\lambda_c = 40$  :**

Mean of  $\sup_{t \in \mathbb{R}} |\hat{S}_1(t) - S_1(t)|$  with Ryzhov's method :

	0.0	0.1	0.2	0.3	0.4	0.5	0.6	0.7	0.8	0.9	1.0
0.0	NaN	0.674	0.514	0.411	0.340	0.290	0.253	0.227	0.211	0.197	0.186
0.1	0.670	NaN	0.644	0.483	0.383	0.307	0.271	0.236	0.212	0.199	0.186
0.2	0.512	0.646	NaN	0.627	0.458	0.359	0.291	0.249	0.216	0.199	0.190
0.3	0.417	0.494	0.617	NaN	0.592	0.426	0.323	0.269	0.226	0.199	0.189
0.4	0.336	0.379	0.459	0.594	NaN	0.552	0.383	0.290	0.234	0.208	0.187
0.5	0.288	0.321	0.361	0.419	0.552	NaN	0.504	0.338	0.252	0.212	0.185
0.6	0.255	0.269	0.290	0.319	0.378	0.511	NaN	0.454	0.289	0.222	0.182
0.7	0.230	0.237	0.251	0.260	0.291	0.339	0.462	NaN	0.380	0.236	0.184
0.8	0.213	0.215	0.216	0.228	0.236	0.259	0.294	0.383	NaN	0.297	0.185
0.9	0.201	0.198	0.195	0.202	0.205	0.212	0.218	0.237	0.293	NaN	0.186
1.0	0.186	0.188	0.186	0.184	0.185	0.191	0.182	0.188	0.187	0.185	NaN

Mean of  $\sup_{t \in \mathbb{R}} |\hat{S}_1(t) - S_1(t)|$  with Maiboroda's method :

	0.0	0.1	0.2	0.3	0.4	0.5	0.6	0.7	0.8	0.9	1.0
0.0	NaN	0.694	0.536	0.438	0.357	0.298	0.255	0.220	0.198	0.183	0.169
0.1	0.697	NaN	0.660	0.508	0.402	0.323	0.276	0.234	0.202	0.181	0.169
0.2	0.547	0.671	NaN	0.647	0.493	0.380	0.298	0.247	0.208	0.187	0.174
0.3	0.442	0.526	0.661	NaN	0.620	0.451	0.343	0.267	0.218	0.191	0.176
0.4	0.354	0.408	0.490	0.625	NaN	0.580	0.406	0.303	0.238	0.197	0.175
0.5	0.293	0.336	0.380	0.453	0.589	NaN	0.541	0.364	0.260	0.206	0.178
0.6	0.256	0.272	0.295	0.337	0.399	0.542	NaN	0.487	0.305	0.220	0.178
0.7	0.224	0.231	0.252	0.265	0.307	0.356	0.485	NaN	0.418	0.245	0.182
0.8	0.201	0.207	0.212	0.227	0.237	0.258	0.304	0.403	NaN	0.306	0.183
0.9	0.186	0.191	0.190	0.195	0.197	0.213	0.224	0.246	0.310	NaN	0.191
1.0	0.176	0.179	0.179	0.177	0.181	0.187	0.183	0.190	0.192	0.194	NaN

Mean of  $\sup_{t \in \mathbb{R}} |\hat{S}_2(t) - S_2(t)|$  with Ryzhov's method :

	0.0	0.1	0.2	0.3	0.4	0.5	0.6	0.7	0.8	0.9	1.0
0.0	NaN	0.146	0.149	0.147	0.149	0.150	0.148	0.147	0.149	0.146	0.148
0.1	0.148	NaN	0.263	0.206	0.186	0.176	0.170	0.166	0.162	0.161	0.159
0.2	0.147	0.263	NaN	0.355	0.264	0.225	0.208	0.198	0.188	0.185	0.176
0.3	0.151	0.210	0.352	NaN	0.419	0.308	0.265	0.236	0.226	0.205	0.201
0.4	0.147	0.184	0.267	0.415	NaN	0.470	0.351	0.303	0.263	0.247	0.227
0.5	0.147	0.176	0.229	0.310	0.461	NaN	0.512	0.389	0.322	0.285	0.263
0.6	0.148	0.169	0.210	0.260	0.352	0.518	NaN	0.542	0.414	0.350	0.310
0.7	0.148	0.166	0.199	0.236	0.296	0.386	0.553	NaN	0.567	0.449	0.382
0.8	0.146	0.161	0.186	0.224	0.261	0.330	0.417	0.573	NaN	0.597	0.452
0.9	0.146	0.161	0.182	0.203	0.247	0.282	0.346	0.443	0.589	NaN	0.599
1.0	0.150	0.160	0.178	0.198	0.228	0.259	0.306	0.373	0.466	0.606	NaN

Mean of  $\sup_{t \in \mathbb{R}} |\hat{S}_2(t) - S_2(t)|$  with Maiboroda's method :

	0.0	0.1	0.2	0.3	0.4	0.5	0.6	0.7	0.8	0.9	1.0
0.0	NaN	0.170	0.174	0.175	0.177	0.180	0.187	0.186	0.190	0.194	0.198
0.1	0.170	NaN	0.290	0.229	0.212	0.203	0.207	0.203	0.204	0.207	0.208
0.2	0.171	0.287	NaN	0.390	0.291	0.260	0.243	0.234	0.229	0.229	0.229
0.3	0.178	0.236	0.384	NaN	0.448	0.341	0.302	0.272	0.269	0.251	0.253
0.4	0.176	0.214	0.288	0.444	NaN	0.507	0.384	0.341	0.305	0.294	0.279
0.5	0.185	0.213	0.260	0.350	0.500	NaN	0.545	0.425	0.364	0.334	0.307
0.6	0.191	0.202	0.240	0.295	0.388	0.546	NaN	0.563	0.454	0.397	0.356
0.7	0.193	0.203	0.235	0.280	0.336	0.426	0.570	NaN	0.602	0.478	0.425
0.8	0.199	0.212	0.228	0.264	0.303	0.366	0.453	0.609	NaN	0.606	0.499
0.9	0.208	0.212	0.225	0.249	0.288	0.333	0.393	0.475	0.611	NaN	0.612
1.0	0.207	0.214	0.225	0.248	0.280	0.309	0.351	0.419	0.498	0.630	NaN

**Simulation results for  $n = 100$  and  $\lambda_c = 200$  :**

Mean of  $\sup_{t \in \mathbb{R}} |\hat{S}_1(t) - S_1(t)|$  with Ryzhov's method :

	0.0	0.1	0.2	0.3	0.4	0.5	0.6	0.7	0.8	0.9	1.0
0.0	NaN	0.656	0.480	0.363	0.282	0.228	0.199	0.168	0.147	0.131	0.116
0.1	0.652	NaN	0.635	0.440	0.334	0.263	0.210	0.177	0.153	0.131	0.118
0.2	0.478	0.635	NaN	0.604	0.419	0.291	0.234	0.188	0.157	0.137	0.117
0.3	0.366	0.449	0.594	NaN	0.562	0.378	0.271	0.207	0.164	0.137	0.120
0.4	0.285	0.333	0.415	0.578	NaN	0.529	0.327	0.236	0.176	0.142	0.119
0.5	0.228	0.257	0.310	0.375	0.526	NaN	0.474	0.284	0.196	0.150	0.116
0.6	0.195	0.211	0.230	0.263	0.333	0.471	NaN	0.406	0.234	0.156	0.120
0.7	0.168	0.178	0.188	0.208	0.237	0.290	0.415	NaN	0.338	0.180	0.119
0.8	0.147	0.147	0.155	0.166	0.175	0.196	0.237	0.336	NaN	0.238	0.118
0.9	0.132	0.133	0.132	0.135	0.138	0.147	0.158	0.174	0.240	NaN	0.118
1.0	0.120	0.122	0.118	0.119	0.117	0.119	0.120	0.121	0.117	0.117	NaN

Mean of  $\sup_{t \in \mathbb{R}} |\hat{S}_1(t) - S_1(t)|$  with Maiboroda's method :

	0.0	0.1	0.2	0.3	0.4	0.5	0.6	0.7	0.8	0.9	1.0
0.0	NaN	0.663	0.494	0.366	0.291	0.234	0.202	0.173	0.152	0.135	0.125
0.1	0.671	NaN	0.652	0.452	0.344	0.264	0.212	0.180	0.159	0.139	0.128
0.2	0.485	0.639	NaN	0.614	0.429	0.299	0.235	0.194	0.163	0.142	0.126
0.3	0.374	0.461	0.616	NaN	0.576	0.390	0.279	0.213	0.169	0.144	0.129
0.4	0.291	0.340	0.432	0.582	NaN	0.546	0.340	0.240	0.181	0.148	0.128
0.5	0.234	0.265	0.315	0.387	0.536	NaN	0.485	0.290	0.206	0.158	0.127
0.6	0.197	0.216	0.236	0.271	0.344	0.484	NaN	0.417	0.240	0.164	0.129
0.7	0.172	0.182	0.193	0.212	0.244	0.294	0.428	NaN	0.347	0.189	0.128
0.8	0.150	0.153	0.162	0.167	0.182	0.202	0.243	0.350	NaN	0.244	0.130
0.9	0.137	0.137	0.141	0.143	0.145	0.156	0.161	0.180	0.242	NaN	0.133
1.0	0.127	0.127	0.126	0.126	0.126	0.128	0.128	0.129	0.129	0.127	NaN

Mean of  $\sup_{t \in \mathbb{R}} |\hat{S}_2(t) - S_2(t)|$  with Ryzhov's method :

	0.0	0.1	0.2	0.3	0.4	0.5	0.6	0.7	0.8	0.9	1.0
0.0	NaN	0.112	0.115	0.113	0.114	0.112	0.112	0.112	0.113	0.112	0.111
0.1	0.112	NaN	0.227	0.171	0.150	0.142	0.133	0.132	0.129	0.126	0.127
0.2	0.114	0.230	NaN	0.325	0.229	0.188	0.171	0.161	0.152	0.150	0.141
0.3	0.114	0.175	0.323	NaN	0.395	0.276	0.227	0.202	0.177	0.173	0.162
0.4	0.114	0.151	0.226	0.398	NaN	0.452	0.323	0.258	0.227	0.207	0.191
0.5	0.113	0.142	0.194	0.280	0.454	NaN	0.495	0.355	0.293	0.254	0.228
0.6	0.112	0.136	0.172	0.225	0.318	0.488	NaN	0.528	0.391	0.321	0.277
0.7	0.113	0.133	0.159	0.202	0.263	0.364	0.527	NaN	0.555	0.424	0.348
0.8	0.110	0.125	0.153	0.185	0.224	0.293	0.392	0.554	NaN	0.579	0.440
0.9	0.112	0.127	0.145	0.171	0.206	0.254	0.317	0.417	0.575	NaN	0.594
1.0	0.113	0.124	0.143	0.166	0.191	0.225	0.276	0.345	0.441	0.598	NaN

Mean of  $\sup_{t \in \mathbb{R}} |\hat{S}_2(t) - S_2(t)|$  with Maiboroda's method :

	0.0	0.1	0.2	0.3	0.4	0.5	0.6	0.7	0.8	0.9	1.0
0.0	NaN	0.134	0.135	0.136	0.139	0.139	0.137	0.141	0.142	0.143	0.143
0.1	0.131	NaN	0.240	0.185	0.171	0.163	0.157	0.158	0.152	0.152	0.155
0.2	0.134	0.242	NaN	0.331	0.241	0.206	0.193	0.180	0.179	0.172	0.169
0.3	0.133	0.187	0.335	NaN	0.412	0.289	0.245	0.217	0.200	0.194	0.188
0.4	0.135	0.167	0.241	0.406	NaN	0.464	0.337	0.273	0.245	0.225	0.214
0.5	0.132	0.160	0.208	0.295	0.461	NaN	0.501	0.368	0.313	0.275	0.252
0.6	0.134	0.154	0.189	0.239	0.336	0.497	NaN	0.531	0.398	0.334	0.294
0.7	0.136	0.152	0.177	0.220	0.277	0.375	0.537	NaN	0.561	0.429	0.367
0.8	0.133	0.146	0.170	0.204	0.244	0.305	0.402	0.565	NaN	0.580	0.449
0.9	0.134	0.146	0.167	0.190	0.225	0.272	0.333	0.432	0.587	NaN	0.600
1.0	0.135	0.145	0.163	0.184	0.209	0.243	0.293	0.362	0.448	0.600	NaN

**Simulation results for  $n = 100$  and  $\lambda_c = 1000$  :**

Mean of  $\sup_{t \in \mathbb{R}} |\hat{S}_1(t) - S_1(t)|$  with Ryzhov's method :

	0.0	0.1	0.2	0.3	0.4	0.5	0.6	0.7	0.8	0.9	1.0
0.0	NaN	0.652	0.463	0.352	0.273	0.225	0.190	0.156	0.135	0.120	0.110
0.1	0.639	NaN	0.615	0.436	0.321	0.246	0.197	0.169	0.140	0.125	0.110
0.2	0.467	0.622	NaN	0.582	0.415	0.290	0.227	0.179	0.146	0.126	0.108
0.3	0.350	0.438	0.595	NaN	0.562	0.363	0.255	0.192	0.155	0.128	0.109
0.4	0.273	0.319	0.413	0.552	NaN	0.519	0.321	0.223	0.168	0.131	0.110
0.5	0.219	0.248	0.292	0.367	0.522	NaN	0.473	0.278	0.183	0.140	0.109
0.6	0.185	0.202	0.224	0.258	0.321	0.453	NaN	0.409	0.223	0.150	0.108
0.7	0.158	0.168	0.181	0.197	0.225	0.276	0.403	NaN	0.320	0.169	0.108
0.8	0.138	0.141	0.148	0.157	0.170	0.191	0.223	0.325	NaN	0.228	0.110
0.9	0.125	0.125	0.124	0.130	0.131	0.138	0.146	0.168	0.225	NaN	0.108
1.0	0.109	0.110	0.108	0.109	0.111	0.110	0.110	0.109	0.108	0.108	NaN

Mean of  $\sup_{t \in \mathbb{R}} |\hat{S}_1(t) - S_1(t)|$  with Maiboroda's method :

	0.0	0.1	0.2	0.3	0.4	0.5	0.6	0.7	0.8	0.9	1.0
0.0	NaN	0.661	0.471	0.358	0.279	0.229	0.194	0.163	0.144	0.132	0.121
0.1	0.650	NaN	0.626	0.440	0.326	0.248	0.202	0.174	0.148	0.132	0.122
0.2	0.474	0.631	NaN	0.594	0.418	0.292	0.233	0.186	0.155	0.135	0.121
0.3	0.355	0.441	0.607	NaN	0.570	0.368	0.260	0.199	0.164	0.137	0.121
0.4	0.274	0.324	0.412	0.559	NaN	0.520	0.324	0.229	0.175	0.141	0.122
0.5	0.222	0.253	0.296	0.371	0.530	NaN	0.480	0.282	0.190	0.149	0.122
0.6	0.191	0.207	0.228	0.262	0.325	0.463	NaN	0.412	0.228	0.159	0.121
0.7	0.166	0.175	0.187	0.203	0.229	0.278	0.407	NaN	0.326	0.176	0.121
0.8	0.145	0.149	0.154	0.163	0.175	0.197	0.229	0.327	NaN	0.234	0.122
0.9	0.133	0.134	0.133	0.140	0.140	0.145	0.153	0.175	0.232	NaN	0.121
1.0	0.120	0.121	0.119	0.121	0.119	0.121	0.122	0.121	0.121	0.122	NaN

Mean of  $\sup_{t \in \mathbb{R}} |\hat{S}_2(t) - S_2(t)|$  with Ryzhov's method :

	0.0	0.1	0.2	0.3	0.4	0.5	0.6	0.7	0.8	0.9	1.0
0.0	NaN	0.105	0.108	0.107	0.108	0.108	0.107	0.108	0.107	0.108	0.109
0.1	0.104	NaN	0.221	0.164	0.144	0.135	0.132	0.125	0.122	0.120	0.121
0.2	0.107	0.225	NaN	0.315	0.227	0.187	0.167	0.153	0.144	0.139	0.134
0.3	0.107	0.167	0.310	NaN	0.394	0.271	0.219	0.196	0.179	0.163	0.156
0.4	0.108	0.146	0.226	0.391	NaN	0.444	0.311	0.250	0.224	0.200	0.180
0.5	0.105	0.135	0.186	0.270	0.452	NaN	0.485	0.357	0.286	0.249	0.217
0.6	0.109	0.130	0.165	0.224	0.317	0.489	NaN	0.532	0.380	0.315	0.268
0.7	0.108	0.126	0.153	0.186	0.255	0.354	0.527	NaN	0.551	0.419	0.340
0.8	0.106	0.123	0.147	0.177	0.224	0.291	0.380	0.553	NaN	0.558	0.433
0.9	0.108	0.121	0.139	0.166	0.199	0.247	0.306	0.410	0.570	NaN	0.585
1.0	0.107	0.123	0.136	0.159	0.181	0.222	0.272	0.333	0.430	0.586	NaN

Mean of  $\sup_{t \in \mathbb{R}} |\hat{S}_2(t) - S_2(t)|$  with Maiboroda's method :

	0.0	0.1	0.2	0.3	0.4	0.5	0.6	0.7	0.8	0.9	1.0
0.0	NaN	0.125	0.129	0.129	0.131	0.130	0.129	0.132	0.129	0.132	0.133
0.1	0.126	NaN	0.233	0.178	0.161	0.152	0.151	0.144	0.141	0.140	0.141
0.2	0.127	0.234	NaN	0.321	0.237	0.200	0.182	0.168	0.161	0.156	0.151
0.3	0.128	0.180	0.318	NaN	0.398	0.277	0.229	0.208	0.192	0.179	0.172
0.4	0.129	0.160	0.235	0.398	NaN	0.447	0.319	0.261	0.235	0.214	0.194
0.5	0.126	0.152	0.197	0.278	0.454	NaN	0.489	0.362	0.294	0.258	0.227
.6	0.128	0.146	0.176	0.236	0.321	0.494	NaN	0.533	0.387	0.324	0.278
0.7	0.130	0.144	0.166	0.198	0.265	0.361	0.530	NaN	0.550	0.422	0.345
0.8	0.128	0.140	0.160	0.191	0.235	0.298	0.387	0.551	NaN	0.564	0.438
0.9	0.128	0.139	0.156	0.180	0.210	0.256	0.316	0.416	0.571	NaN	0.585
1.0	0.127	0.140	0.153	0.174	0.194	0.233	0.279	0.341	0.438	0.586	NaN

**Simulation results for  $n = 1000$  and  $\lambda_c = 40$  :**

Mean of  $\sup_{t \in \mathbb{R}} |\hat{S}_1(t) - S_1(t)|$  with Ryzhov's method :

	0.0	0.1	0.2	0.3	0.4	0.5	0.6	0.7	0.8	0.9	1.0
0.0	NaN	0.422	0.261	0.185	0.145	0.120	0.104	0.093	0.086	0.079	0.074
0.1	0.419	NaN	0.403	0.240	0.173	0.133	0.111	0.097	0.087	0.080	0.074
0.2	0.259	0.394	NaN	0.366	0.221	0.157	0.124	0.102	0.088	0.081	0.075
0.3	0.185	0.241	0.366	NaN	0.338	0.201	0.141	0.109	0.093	0.083	0.075
0.4	0.144	0.173	0.220	0.343	NaN	0.304	0.175	0.125	0.097	0.083	0.074
0.5	0.119	0.133	0.158	0.198	0.294	NaN	0.268	0.152	0.108	0.086	0.074
0.6	0.106	0.112	0.126	0.139	0.180	0.269	NaN	0.223	0.126	0.090	0.074
0.7	0.094	0.098	0.103	0.110	0.126	0.154	0.226	NaN	0.181	0.098	0.074
0.8	0.086	0.086	0.089	0.092	0.100	0.107	0.126	0.179	NaN	0.129	0.074
0.9	0.080	0.080	0.080	0.081	0.083	0.086	0.091	0.099	0.127	NaN	0.074
1.0	0.074	0.076	0.076	0.075	0.075	0.074	0.075	0.074	0.074	0.075	NaN

Mean of  $\sup_{t \in \mathbb{R}} |\hat{S}_1(t) - S_1(t)|$  with Maiboroda's method :

	0.0	0.1	0.2	0.3	0.4	0.5	0.6	0.7	0.8	0.9	1.0
0.0	NaN	0.465	0.286	0.201	0.159	0.134	0.117	0.104	0.096	0.091	0.088
0.1	0.460	NaN	0.432	0.261	0.186	0.144	0.119	0.105	0.095	0.087	0.081
0.2	0.279	0.422	NaN	0.401	0.234	0.168	0.131	0.107	0.093	0.086	0.081
0.3	0.196	0.257	0.393	NaN	0.363	0.219	0.145	0.115	0.095	0.085	0.077
0.4	0.153	0.181	0.233	0.368	NaN	0.329	0.185	0.128	0.099	0.083	0.074
0.5	0.125	0.139	0.164	0.211	0.323	NaN	0.293	0.161	0.111	0.084	0.072
0.6	0.106	0.113	0.125	0.146	0.186	0.296	NaN	0.241	0.131	0.091	0.073
0.7	0.092	0.096	0.103	0.112	0.130	0.162	0.249	NaN	0.197	0.101	0.074
0.8	0.083	0.083	0.087	0.091	0.098	0.109	0.132	0.192	NaN	0.135	0.074
0.9	0.077	0.077	0.078	0.079	0.080	0.084	0.091	0.102	0.135	NaN	0.078
1.0	0.072	0.073	0.073	0.072	0.074	0.075	0.076	0.077	0.078	0.079	NaN

Mean of  $\sup_{t \in \mathbb{R}} |\hat{S}_2(t) - S_2(t)|$  with Ryzhov's method :

	0.0	0.1	0.2	0.3	0.4	0.5	0.6	0.7	0.8	0.9	1.0
0.0	NaN	0.054	0.054	0.055	0.055	0.055	0.054	0.054	0.055	0.054	0.054
0.1	0.054	NaN	0.108	0.081	0.071	0.066	0.065	0.063	0.061	0.061	0.061
0.2	0.056	0.107	NaN	0.158	0.107	0.090	0.081	0.076	0.072	0.069	0.069
0.3	0.054	0.080	0.155	NaN	0.204	0.134	0.108	0.096	0.088	0.081	0.078
0.4	0.055	0.072	0.106	0.203	NaN	0.242	0.157	0.127	0.110	0.099	0.091
0.5	0.056	0.066	0.089	0.135	0.234	NaN	0.277	0.179	0.141	0.123	0.108
0.6	0.055	0.064	0.081	0.108	0.161	0.274	NaN	0.306	0.202	0.157	0.136
0.7	0.055	0.063	0.075	0.094	0.127	0.182	0.305	NaN	0.333	0.225	0.171
0.8	0.055	0.061	0.071	0.087	0.108	0.141	0.200	0.329	NaN	0.354	0.241
0.9	0.054	0.060	0.071	0.083	0.099	0.123	0.159	0.221	0.355	NaN	0.377
1.0	0.055	0.060	0.067	0.078	0.089	0.110	0.135	0.174	0.237	0.376	NaN

Mean of  $\sup_{t \in \mathbb{R}} |\hat{S}_2(t) - S_2(t)|$  with Maiboroda's method :

	0.0	0.1	0.2	0.3	0.4	0.5	0.6	0.7	0.8	0.9	1.0
0.0	NaN	0.082	0.085	0.089	0.093	0.095	0.102	0.107	0.112	0.116	0.124
0.1	0.080	NaN	0.130	0.110	0.106	0.107	0.109	0.113	0.116	0.122	0.129
0.2	0.082	0.129	NaN	0.189	0.139	0.128	0.124	0.124	0.129	0.129	0.135
0.3	0.085	0.108	0.186	NaN	0.234	0.173	0.147	0.144	0.141	0.142	0.143
0.4	0.088	0.103	0.138	0.234	NaN	0.271	0.199	0.174	0.162	0.157	0.158
0.5	0.092	0.103	0.124	0.170	0.276	NaN	0.323	0.225	0.200	0.182	0.173
0.6	0.097	0.106	0.122	0.148	0.201	0.318	NaN	0.345	0.252	0.219	0.203
0.7	0.100	0.108	0.123	0.142	0.172	0.225	0.353	NaN	0.381	0.278	0.236
0.8	0.106	0.112	0.123	0.140	0.162	0.194	0.253	0.379	NaN	0.408	0.297
0.9	0.113	0.118	0.127	0.141	0.156	0.182	0.217	0.273	0.405	NaN	0.430
1.0	0.117	0.122	0.131	0.142	0.156	0.174	0.198	0.237	0.293	0.422	NaN

**Simulation results for  $n = 1000$  and  $\lambda_c = 200$  :**

Mean of  $\sup_{t \in \mathbb{R}} |\hat{S}_1(t) - S_1(t)|$  with Ryzhov's method :

	0.0	0.1	0.2	0.3	0.4	0.5	0.6	0.7	0.8	0.9	1.0
0.0	NaN	0.380	0.209	0.142	0.107	0.085	0.069	0.058	0.050	0.044	0.040
0.1	0.384	NaN	0.345	0.193	0.132	0.096	0.074	0.061	0.052	0.045	0.040
0.2	0.212	0.349	NaN	0.321	0.173	0.115	0.085	0.065	0.054	0.046	0.041
0.3	0.145	0.191	0.322	NaN	0.286	0.153	0.102	0.074	0.058	0.047	0.040
0.4	0.104	0.129	0.175	0.287	NaN	0.257	0.131	0.085	0.062	0.049	0.041
0.5	0.083	0.097	0.117	0.155	0.255	NaN	0.216	0.109	0.070	0.052	0.041
0.6	0.069	0.075	0.085	0.101	0.130	0.215	NaN	0.178	0.087	0.054	0.041
0.7	0.058	0.062	0.066	0.073	0.086	0.110	0.174	NaN	0.132	0.062	0.041
0.8	0.051	0.052	0.054	0.058	0.062	0.069	0.085	0.132	NaN	0.088	0.040
0.9	0.046	0.046	0.047	0.047	0.048	0.051	0.054	0.062	0.087	NaN	0.040
1.0	0.041	0.040	0.041	0.041	0.042	0.041	0.041	0.040	0.041	0.041	NaN



Mean of  $\sup_{t \in \mathbb{R}} |\hat{S}_1(t) - S_1(t)|$  with Maiboroda's method :

	0.0	0.1	0.2	0.3	0.4	0.5	0.6	0.7	0.8	0.9	1.0
0.0	NaN	0.390	0.212	0.145	0.114	0.092	0.077	0.067	0.061	0.057	0.054
0.1	0.392	NaN	0.354	0.197	0.135	0.101	0.082	0.070	0.062	0.057	0.054
0.2	0.217	0.358	NaN	0.328	0.180	0.121	0.091	0.074	0.064	0.058	0.054
0.3	0.150	0.197	0.332	NaN	0.294	0.156	0.106	0.080	0.066	0.058	0.054
0.4	0.110	0.132	0.179	0.294	NaN	0.259	0.136	0.092	0.070	0.059	0.054
0.5	0.089	0.100	0.121	0.157	0.261	NaN	0.221	0.116	0.078	0.061	0.054
0.6	0.074	0.081	0.091	0.105	0.134	0.222	NaN	0.182	0.093	0.064	0.054
0.7	0.063	0.067	0.071	0.079	0.091	0.114	0.183	NaN	0.139	0.071	0.054
0.8	0.057	0.058	0.060	0.064	0.069	0.075	0.093	0.140	NaN	0.094	0.054
0.9	0.052	0.053	0.054	0.055	0.056	0.059	0.062	0.070	0.093	NaN	0.054
1.0	0.049	0.048	0.049	0.050	0.050	0.051	0.051	0.051	0.052	0.053	NaN

Mean of  $\sup_{t \in \mathbb{R}} |\hat{S}_2(t) - S_2(t)|$  with Ryzhov's method :

	0.0	0.1	0.2	0.3	0.4	0.5	0.6	0.7	0.8	0.9	1.0
0.0	NaN	0.040	0.040	0.040	0.040	0.040	0.040	0.040	0.040	0.040	0.040
0.1	0.039	NaN	0.083	0.061	0.054	0.050	0.048	0.046	0.046	0.045	0.044
0.2	0.040	0.084	NaN	0.131	0.085	0.069	0.061	0.057	0.053	0.052	0.050
0.3	0.041	0.062	0.131	NaN	0.172	0.108	0.086	0.072	0.066	0.061	0.058
0.4	0.040	0.053	0.084	0.171	NaN	0.211	0.129	0.100	0.085	0.075	0.070
0.5	0.040	0.050	0.069	0.109	0.210	NaN	0.246	0.150	0.115	0.096	0.083
0.6	0.040	0.048	0.062	0.085	0.128	0.244	NaN	0.279	0.175	0.130	0.108
0.7	0.041	0.047	0.058	0.073	0.100	0.152	0.273	NaN	0.304	0.191	0.143
0.8	0.040	0.046	0.054	0.066	0.083	0.116	0.173	0.303	NaN	0.333	0.207
0.9	0.040	0.044	0.051	0.061	0.076	0.096	0.128	0.190	0.329	NaN	0.347
1.0	0.041	0.045	0.050	0.058	0.070	0.086	0.107	0.144	0.212	0.353	NaN

Mean of  $\sup_{t \in \mathbb{R}} |\hat{S}_2(t) - S_2(t)|$  with Maiboroda's method :

	0.0	0.1	0.2	0.3	0.4	0.5	0.6	0.7	0.8	0.9	1.0
0.0	NaN	0.075	0.075	0.077	0.077	0.078	0.079	0.081	0.083	0.085	0.086
0.1	0.073	NaN	0.105	0.088	0.085	0.083	0.084	0.085	0.086	0.088	0.089
0.2	0.073	0.104	NaN	0.146	0.107	0.096	0.093	0.091	0.090	0.091	0.093
0.3	0.073	0.087	0.148	NaN	0.188	0.128	0.110	0.100	0.099	0.098	0.097
0.4	0.073	0.081	0.106	0.188	NaN	0.226	0.151	0.126	0.115	0.109	0.106
0.5	0.073	0.080	0.093	0.126	0.227	NaN	0.263	0.174	0.138	0.124	0.115
0.6	0.074	0.079	0.089	0.108	0.146	0.263	NaN	0.296	0.193	0.155	0.135
0.7	0.074	0.079	0.086	0.099	0.121	0.172	0.293	NaN	0.323	0.212	0.171
0.8	0.073	0.077	0.084	0.092	0.110	0.138	0.194	0.324	NaN	0.349	0.227
0.9	0.074	0.077	0.081	0.089	0.103	0.121	0.150	0.211	0.345	NaN	0.367
1.0	0.074	0.077	0.082	0.087	0.098	0.111	0.130	0.167	0.231	0.376	NaN

**Simulation results for  $n = 1000$  and  $\lambda_c = 1000$  :**

Mean of  $\sup_{t \in \mathbb{R}} |\hat{S}_1(t) - S_1(t)|$  with Ryzhov's method :

	0.0	0.1	0.2	0.3	0.4	0.5	0.6	0.7	0.8	0.9	1.0
0.0	NaN	0.365	0.205	0.138	0.103	0.080	0.065	0.055	0.048	0.042	0.038
0.1	0.367	NaN	0.342	0.185	0.125	0.092	0.073	0.058	0.048	0.043	0.038
0.2	0.206	0.341	NaN	0.306	0.164	0.111	0.079	0.062	0.051	0.043	0.038
0.3	0.138	0.185	0.315	NaN	0.271	0.146	0.097	0.069	0.053	0.045	0.038
0.4	0.103	0.124	0.164	0.279	NaN	0.247	0.126	0.082	0.058	0.045	0.038
0.5	0.078	0.091	0.110	0.143	0.245	NaN	0.212	0.103	0.065	0.047	0.038
0.6	0.066	0.071	0.080	0.096	0.124	0.209	NaN	0.169	0.080	0.052	0.039
0.7	0.055	0.059	0.062	0.069	0.082	0.104	0.166	NaN	0.125	0.058	0.038
0.8	0.048	0.049	0.051	0.054	0.058	0.066	0.082	0.127	NaN	0.080	0.038
0.9	0.041	0.042	0.044	0.043	0.045	0.048	0.052	0.058	0.080	NaN	0.037
1.0	0.037	0.037	0.037	0.038	0.038	0.038	0.038	0.038	0.038	0.038	NaN

Mean of  $\sup_{t \in \mathbb{R}} |\hat{S}_1(t) - S_1(t)|$  with Maiboroda's method :

	0.0	0.1	0.2	0.3	0.4	0.5	0.6	0.7	0.8	0.9	1.0
0.0	NaN	0.367	0.207	0.144	0.110	0.088	0.075	0.066	0.060	0.056	0.052
0.1	0.372	NaN	0.346	0.189	0.131	0.100	0.082	0.068	0.060	0.055	0.052
0.2	0.210	0.344	NaN	0.310	0.170	0.118	0.088	0.072	0.062	0.056	0.053
0.3	0.144	0.190	0.318	NaN	0.276	0.153	0.105	0.079	0.065	0.057	0.053
0.4	0.110	0.131	0.169	0.284	NaN	0.249	0.133	0.091	0.068	0.058	0.053
0.5	0.087	0.099	0.116	0.149	0.248	NaN	0.216	0.110	0.075	0.060	0.053
0.6	0.074	0.080	0.088	0.103	0.131	0.213	NaN	0.174	0.088	0.063	0.053
0.7	0.065	0.068	0.071	0.078	0.089	0.111	0.173	NaN	0.132	0.069	0.053
0.8	0.060	0.059	0.062	0.064	0.068	0.075	0.090	0.134	NaN	0.089	0.053
0.9	0.053	0.054	0.055	0.055	0.057	0.059	0.062	0.068	0.088	NaN	0.052
1.0	0.050	0.051	0.050	0.051	0.052	0.051	0.052	0.052	0.052	0.052	NaN

Mean of  $\sup_{t \in \mathbb{R}} |\hat{S}_2(t) - S_2(t)|$  with Ryzhov's method :

	0.0	0.1	0.2	0.3	0.4	0.5	0.6	0.7	0.8	0.9	1.0
0.0	NaN	0.039	0.039	0.038	0.039	0.038	0.038	0.038	0.038	0.039	0.038
0.1	0.038	NaN	0.080	0.059	0.052	0.048	0.046	0.045	0.044	0.043	0.042
0.2	0.039	0.082	NaN	0.125	0.080	0.066	0.057	0.054	0.052	0.050	0.048
0.3	0.038	0.058	0.127	NaN	0.164	0.103	0.081	0.069	0.064	0.058	0.054
0.4	0.038	0.051	0.080	0.169	NaN	0.208	0.126	0.099	0.081	0.072	0.066
0.5	0.038	0.047	0.065	0.103	0.206	NaN	0.243	0.147	0.109	0.093	0.081
0.6	0.039	0.045	0.058	0.081	0.124	0.239	NaN	0.270	0.168	0.127	0.105
0.7	0.038	0.044	0.054	0.069	0.096	0.148	0.270	NaN	0.298	0.184	0.141
0.8	0.038	0.044	0.051	0.063	0.081	0.110	0.169	0.300	NaN	0.320	0.201
0.9	0.039	0.043	0.050	0.058	0.072	0.092	0.126	0.186	0.324	NaN	0.333
1.0	0.038	0.042	0.048	0.056	0.066	0.081	0.101	0.138	0.201	0.347	NaN

Mean of  $\sup_{t \in \mathbb{R}} |\hat{S}_2(t) - S_2(t)|$  with Maiboroda's method :

	0.0	0.1	0.2	0.3	0.4	0.5	0.6	0.7	0.8	0.9	1.0
0.0	NaN	0.073	0.073	0.073	0.073	0.074	0.074	0.074	0.074	0.075	0.075
0.1	0.072	NaN	0.100	0.084	0.080	0.079	0.078	0.077	0.077	0.076	0.076
0.2	0.073	0.100	NaN	0.138	0.101	0.090	0.084	0.082	0.081	0.080	0.080
0.3	0.072	0.083	0.140	NaN	0.177	0.120	0.100	0.092	0.088	0.085	0.083
0.4	0.072	0.079	0.099	0.180	NaN	0.215	0.140	0.117	0.101	0.095	0.090
0.5	0.073	0.077	0.088	0.121	0.217	NaN	0.252	0.160	0.125	0.111	0.102
0.6	0.073	0.076	0.084	0.101	0.138	0.249	NaN	0.279	0.181	0.141	0.120
0.7	0.073	0.076	0.081	0.091	0.113	0.161	0.281	NaN	0.307	0.195	0.153
0.8	0.073	0.075	0.079	0.087	0.100	0.124	0.181	0.310	NaN	0.330	0.212
0.9	0.073	0.075	0.078	0.083	0.092	0.109	0.140	0.197	0.331	NaN	0.344
1.0	0.073	0.074	0.077	0.082	0.089	0.100	0.118	0.152	0.212	0.355	NaN

## Results obtained for the simulations with real data

In this section of the Appendix, we give the results of the estimators obtained using a real database.

Using the real weights  $p_1(A) = 0.385819$ ,  $p_2(A) = 0.614181$ ,  $p_1(B) = 0.403643$  and  $p_2(B) = 0.596357$ , we obtained a sup-norm of 2.489 for the Ryzhov's estimate of  $S_1$  and 1.623 for  $S_2$ , and 1.260 for the Maibroda's estimate of  $S_1$  and 1.212 for  $S_2$ .

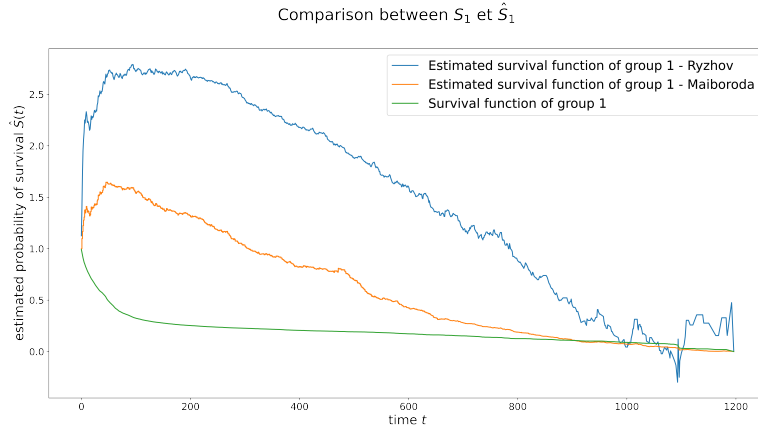


Figure 7: Estimated survival functions using Ryzhov's and Maibroda's estimators

Note : The estimated survival functions using Ryzhov's and Maibroda's estimators for group 1 are here shown without correction.

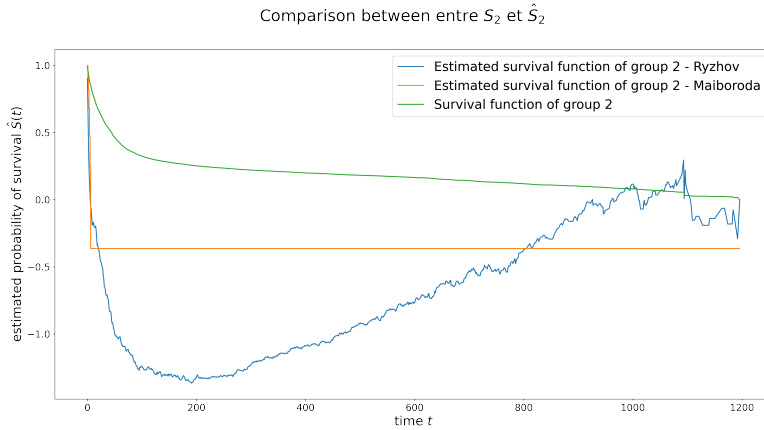


Figure 8: Estimated survival functions using Ryzhov's and Maibroda's estimators

Note : The estimated survival functions using Ryzhov's and Maibroda's estimators for group 2 are here shown without correction.

Now we limit sick leaves at 360 days. We obtained a sup-norm of 1.458 for the Ryzhov's estimate of  $S_1$  and 0.953 for  $S_2$ , and 0.765 for the Maibroda's estimate of  $S_1$  and 0.787 for  $S_2$ . The distribution in this case is :

Age Group (Sample)	Gender (Group)	Number of people	Proportion
<= 40ans	M	5 675	0.385871
	F	9 032	0.614129
> 40ans	M	5 791	0.405248
	F	8 499	0.594752

Table 17: Proportion of each sample and group for our real datamabe limiting it to 360 days

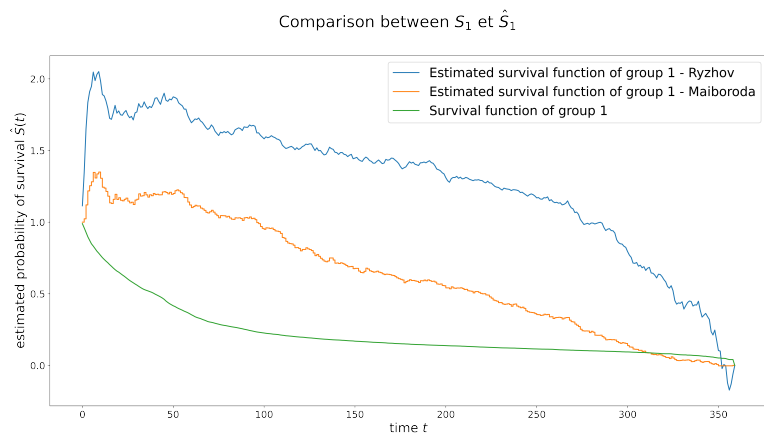


Figure 9: Estimated survival functions using Ryzhov's and Maiboroda's estimators

Note : The estimated survival functions using Ryzhov's and Maiboroda's estimators for group 1 are here shown without correction, limited at 360 days.

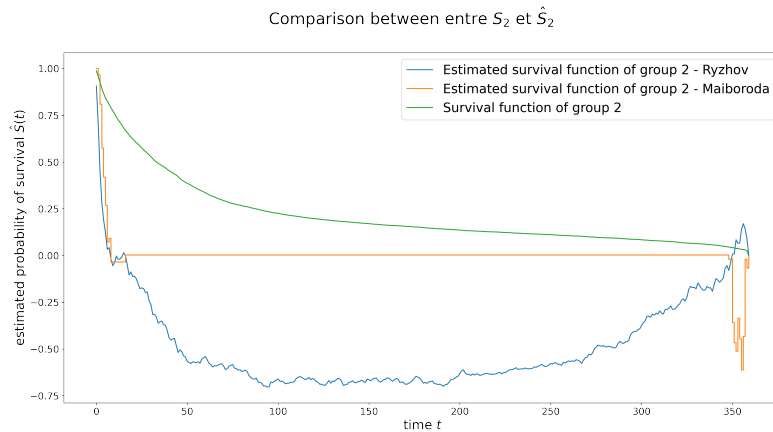


Figure 10: Estimated survival functions using Ryzhov's and Maiboroda's estimators

Note : The estimated survival functions using Ryzhov's and Maiboroda's estimators for group 2 are here shown without correction, limited at 360 days.

Here are the results after separating the data into 2 samples A and B, in order to choose the proportion of each group (e.g. men/women) in each of these samples. In this way we choose weights that give better results. We have chosen that in sample A there are 6000 women and 10000 men. The proportions are then the following :

Sample	Gender (Group)	Number of people	Proportion
A	M	10 000	0.625
	F	6 000	0.375
B	M	3 098	0.180376
	F	14 077	0.819622

Table 18: Proportion of each sample and group for our arranged database

In this case, we obtained a sup-norm of 0.474 for the Ryzhov's estimate of  $S_1$  and 0.285 for  $S_2$ , and 0.396 for the Maiboroda's estimate of  $S_1$  and 0.234 for  $S_2$ .

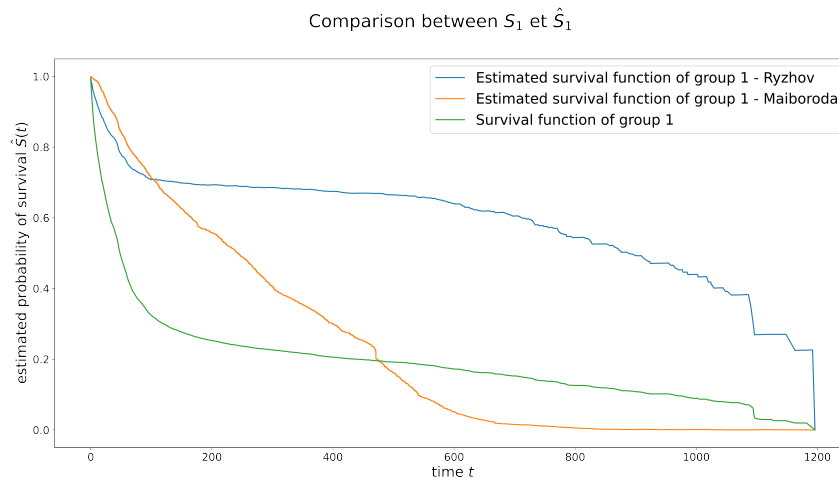


Figure 11: Estimated survival functions using Ryzhov's and Maiboroda's estimators

Note : The estimated survival functions using Ryzhov's and Maiboroda's estimators for group 1 are here shown without correction.

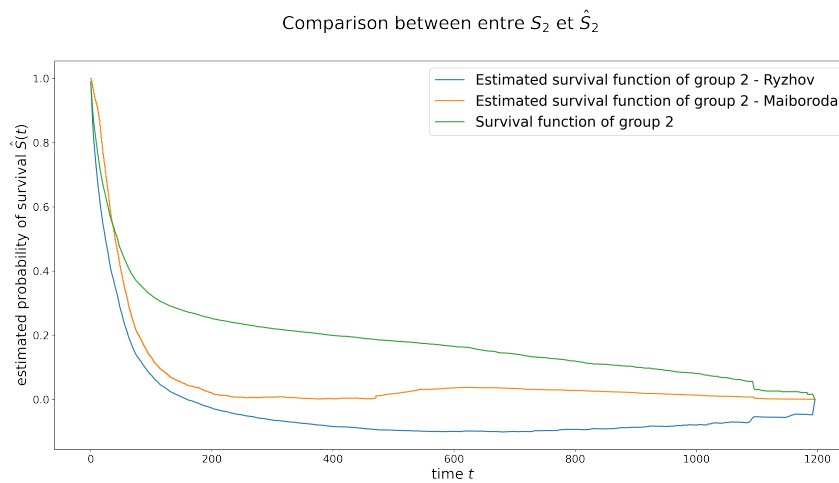


Figure 12: Estimated survival functions using Ryzhov's and Maiboroda's estimators

Note : The estimated survival functions using Ryzhov's and Maiboroda's estimators for group 1 are here shown without correction.

As we had better results with a limit of 360 days, we have done the same and then we have chosen that in sample A there are 6000 women and 10000 men. We obtained a sup-norm of 0.215 for the Ryzhov's estimate of  $S_1$  and 0.131 for  $S_2$ , and 0.201 for the Maibroda's estimate of  $S_1$  and 0.117 for  $S_2$ . The proportions are in this case :

Sample	Gender (Group)	Number of people	Proportion
A	M	10 000	0.625
	F	6 000	0.375
B	M	1 466	0.112795
	F	11 531	0.887205

Table 19: Proportion of each sample and group for our arranged database

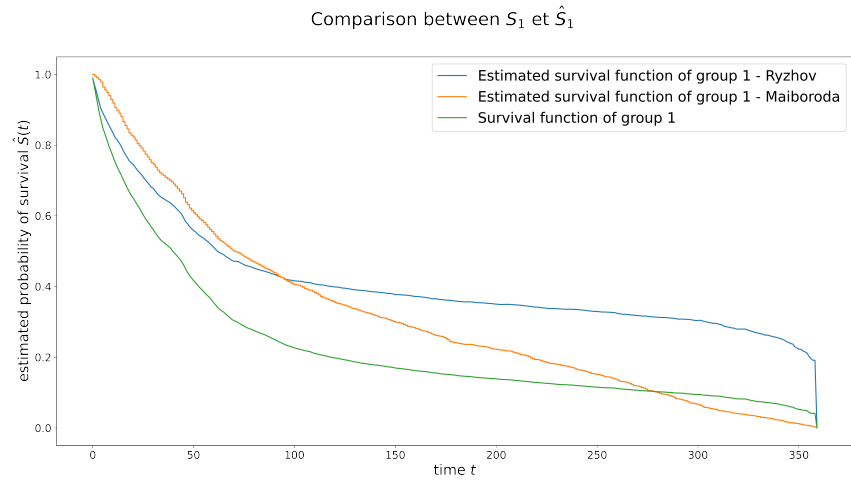


Figure 13: Estimated survival functions using Ryzhov's and Maiboroda's estimators

Note : The estimated survival functions using Ryzhov's and Maiboroda's estimators for group 1 are here shown without correction.

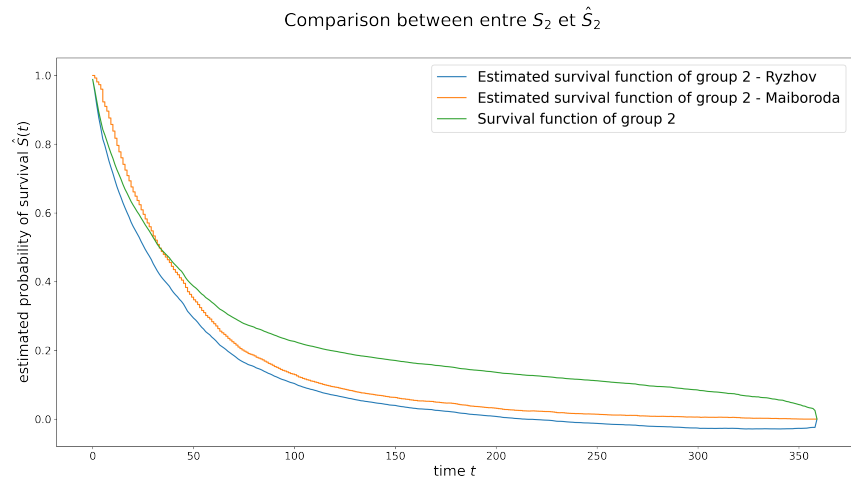


Figure 14: Estimated survival functions using Ryzhov's and Maiboroda's estimators

Note : The estimated survival functions using Ryzhov's and Maiboroda's estimators for group 1 are here shown without correction.