



HAL
open science

Structure and flow conditions through a colloidal packed bed formed under flow and confinement

Nolwenn Delouche, Benjamin Dersoir, A. B. Schofield, H. Tabuteau

► **To cite this version:**

Nolwenn Delouche, Benjamin Dersoir, A. B. Schofield, H. Tabuteau. Structure and flow conditions through a colloidal packed bed formed under flow and confinement. *Soft Matter*, 2022, 18 (47), pp.8995-9007. 10.1039/d2sm00419d . hal-03884651

HAL Id: hal-03884651

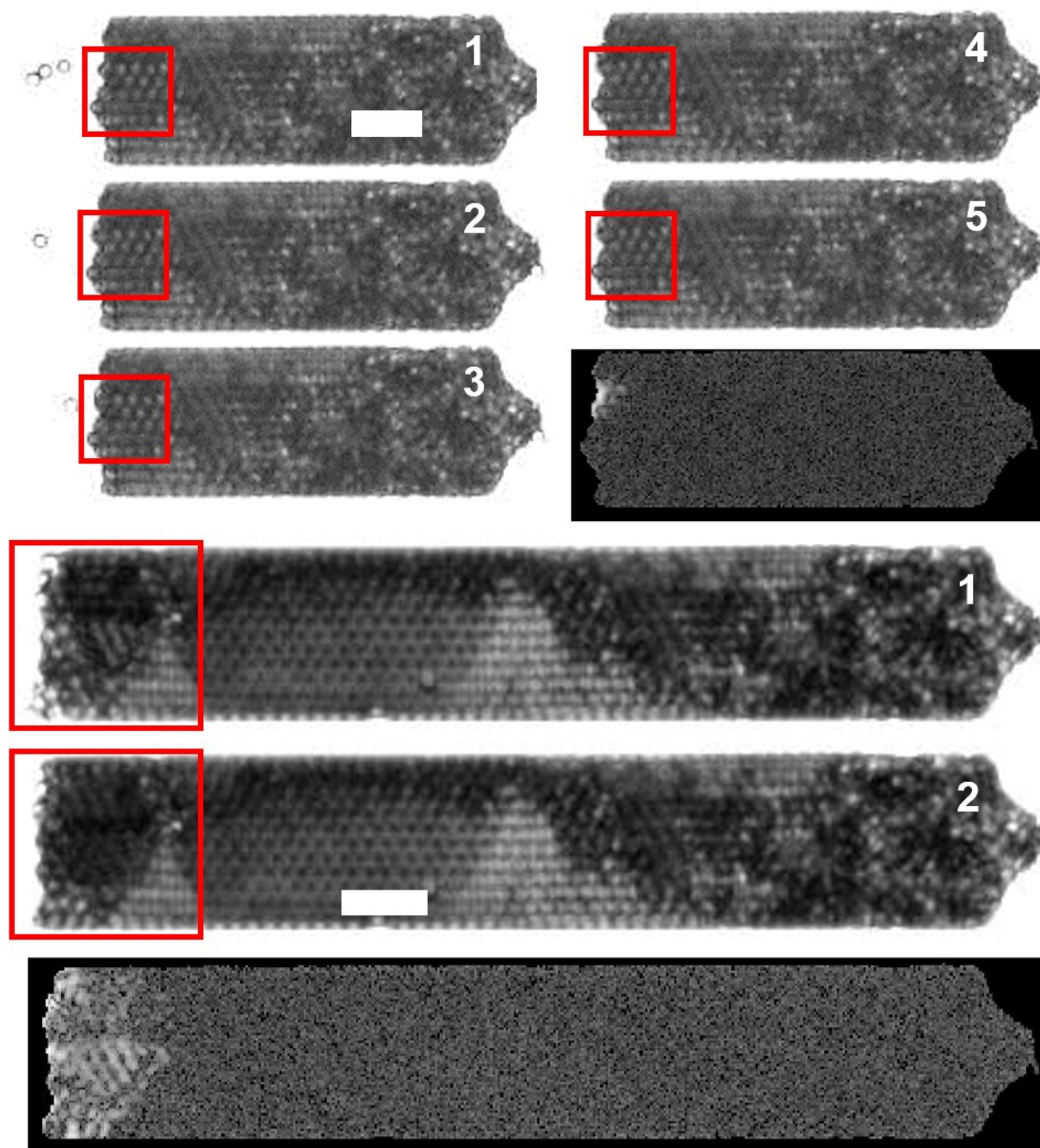
<https://hal.science/hal-03884651>

Submitted on 22 Mar 2023

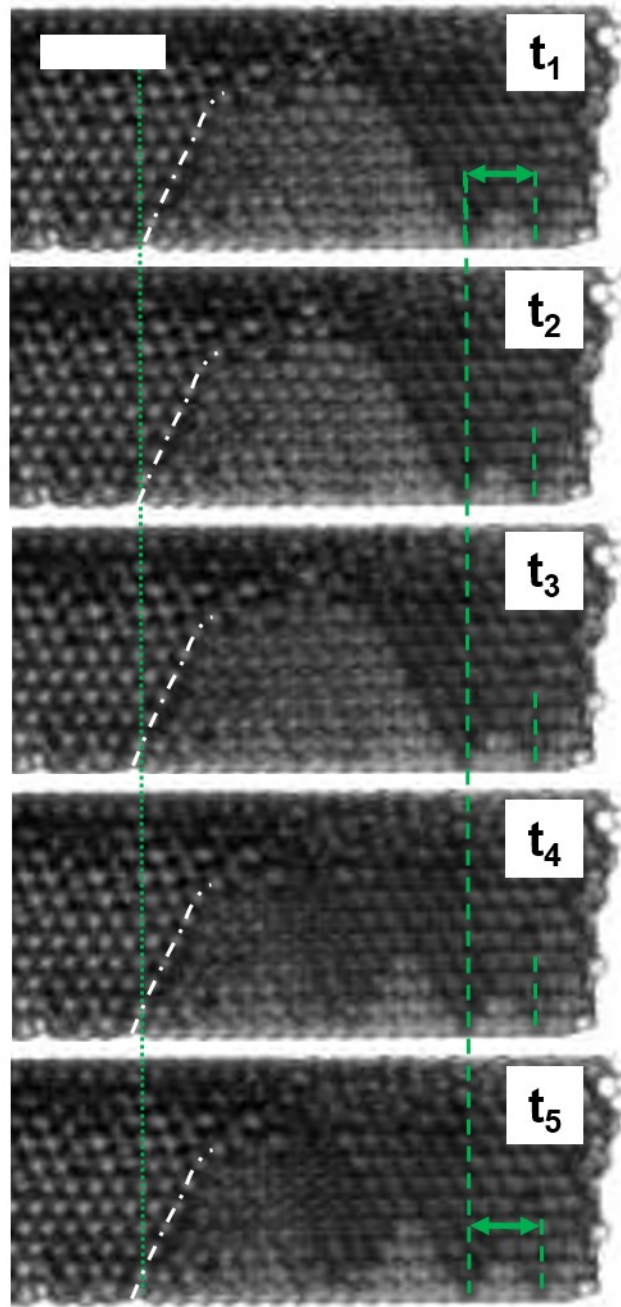
HAL is a multi-disciplinary open access archive for the deposit and dissemination of scientific research documents, whether they are published or not. The documents may come from teaching and research institutions in France or abroad, or from public or private research centers.

L'archive ouverte pluridisciplinaire **HAL**, est destinée au dépôt et à la diffusion de documents scientifiques de niveau recherche, publiés ou non, émanant des établissements d'enseignement et de recherche français ou étrangers, des laboratoires publics ou privés.

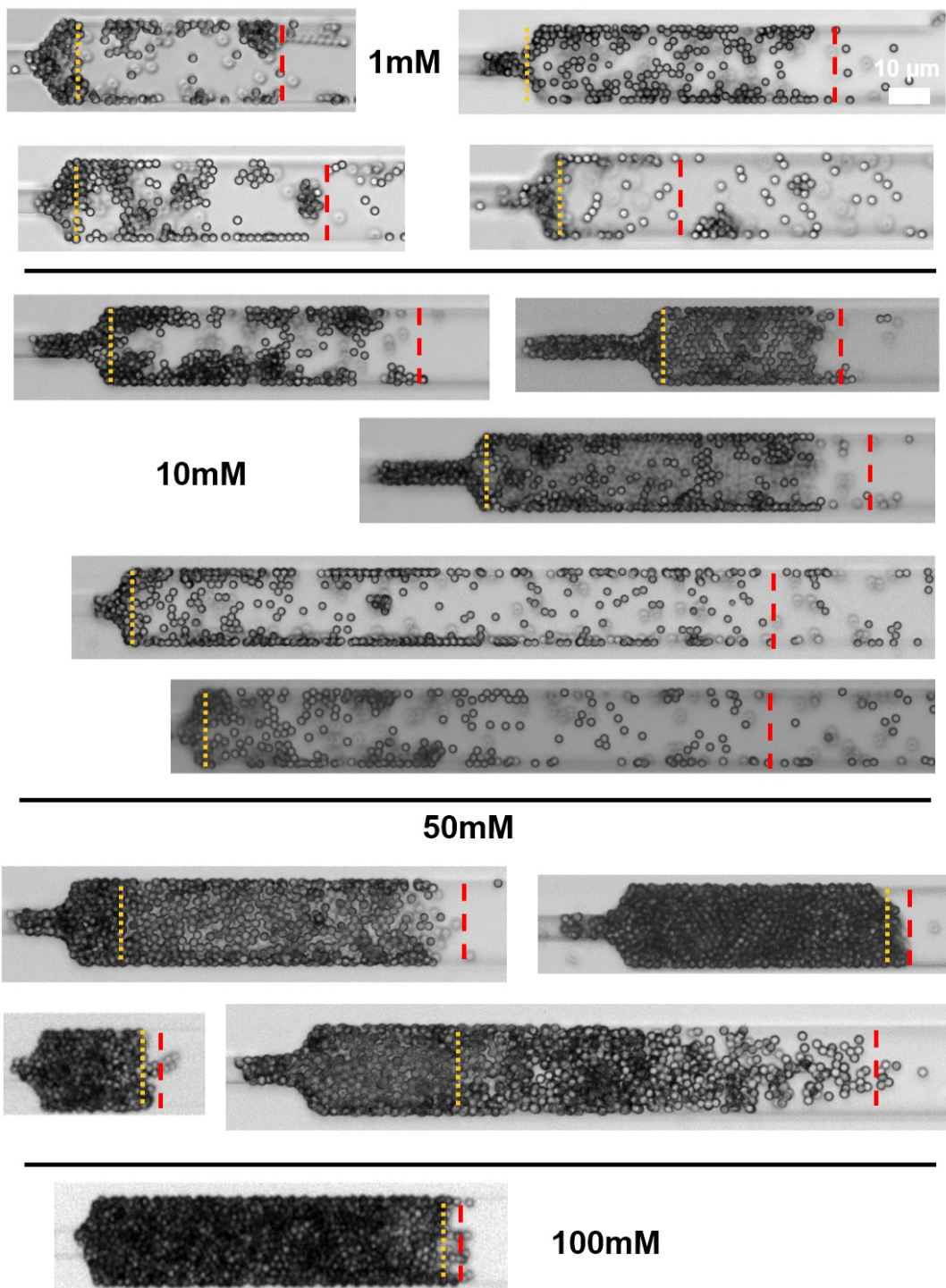
Electronic Supplementary information



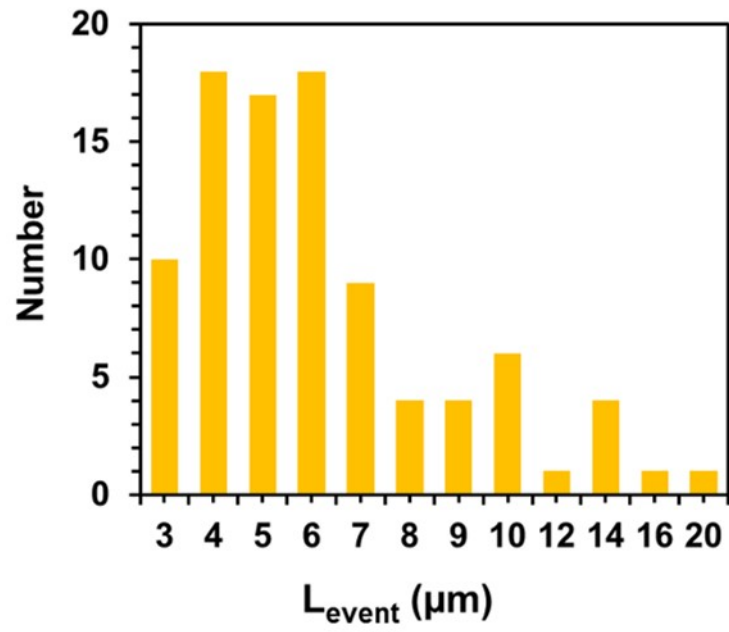
Sup. Figure 1: A small (top) and a large rearrangement event (bottom) that cannot be easily discerned by sight. We provide the images and then the results of the image analysis quantifying each event. In the latter the rearrangement event is in white, taking place within the outlined rectangle in the raw images, while the rest of the accumulation is in grey. The time between each image is 0.01s, the scale bars correspond to 10 μ m.



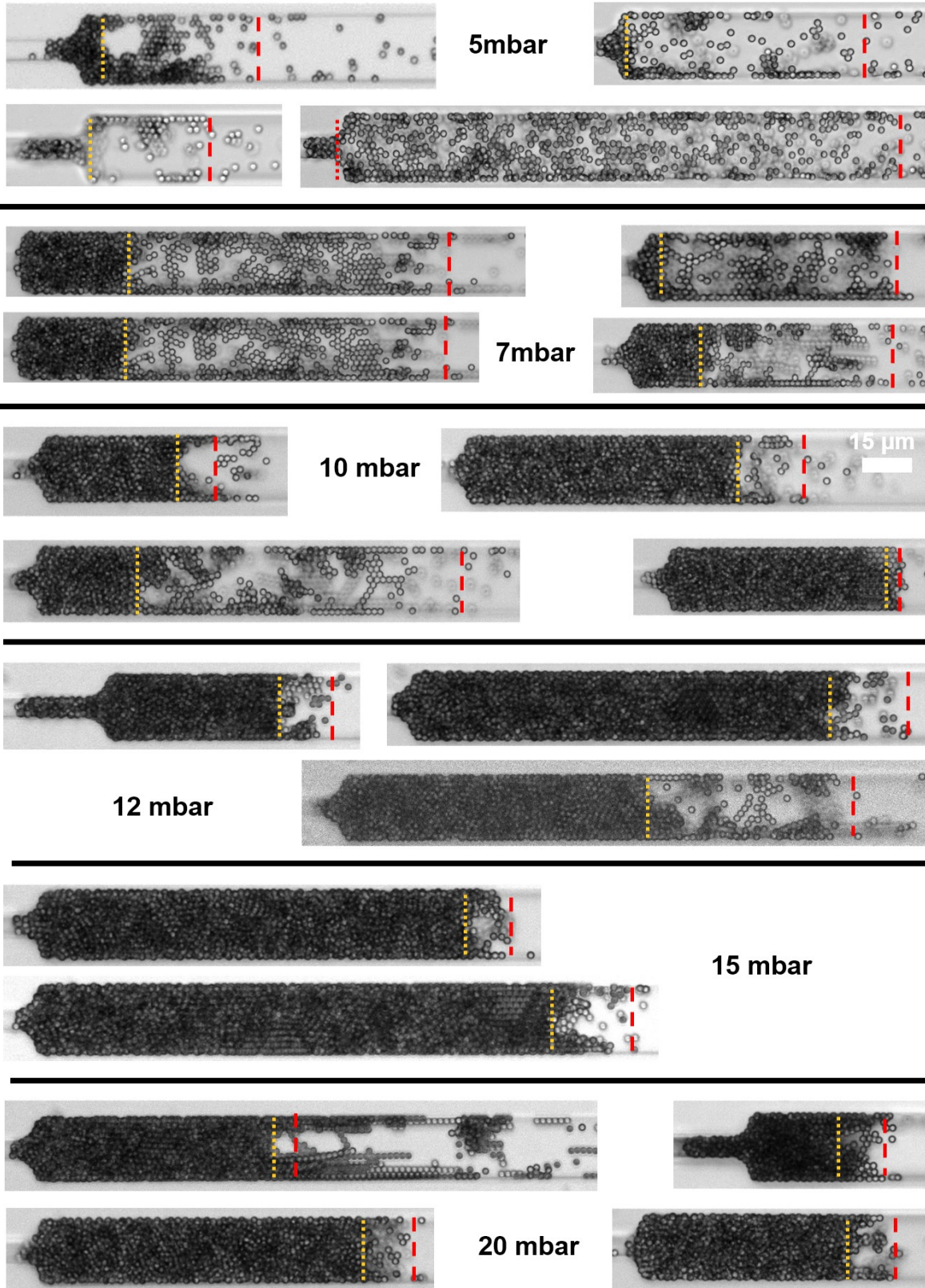
Sup. Figure 2: Compression by the fluid at the rear of the particle accumulation while no new particles are added. The time between each image is 0.1s. The distance between the two dashed lines at the right of the images is constant, indicating that this right part of the accumulation, which starts from the longer dashed line, does not undergo any compression. On the left of each image the position of the dotted line is fixed while the oblique line moves towards the left showing that this left part of the accumulation is compressed. Important rearrangements take place in the middle between the dashed and the dotted lines. Roughly half of the particles on the right hand side of this middle section move vertically in order to be in the same plane as the particles on the right hand side. This vertical motion arises from the compression of the left side. Scale bar corresponds to 15 μ m and the flow goes from right to left.



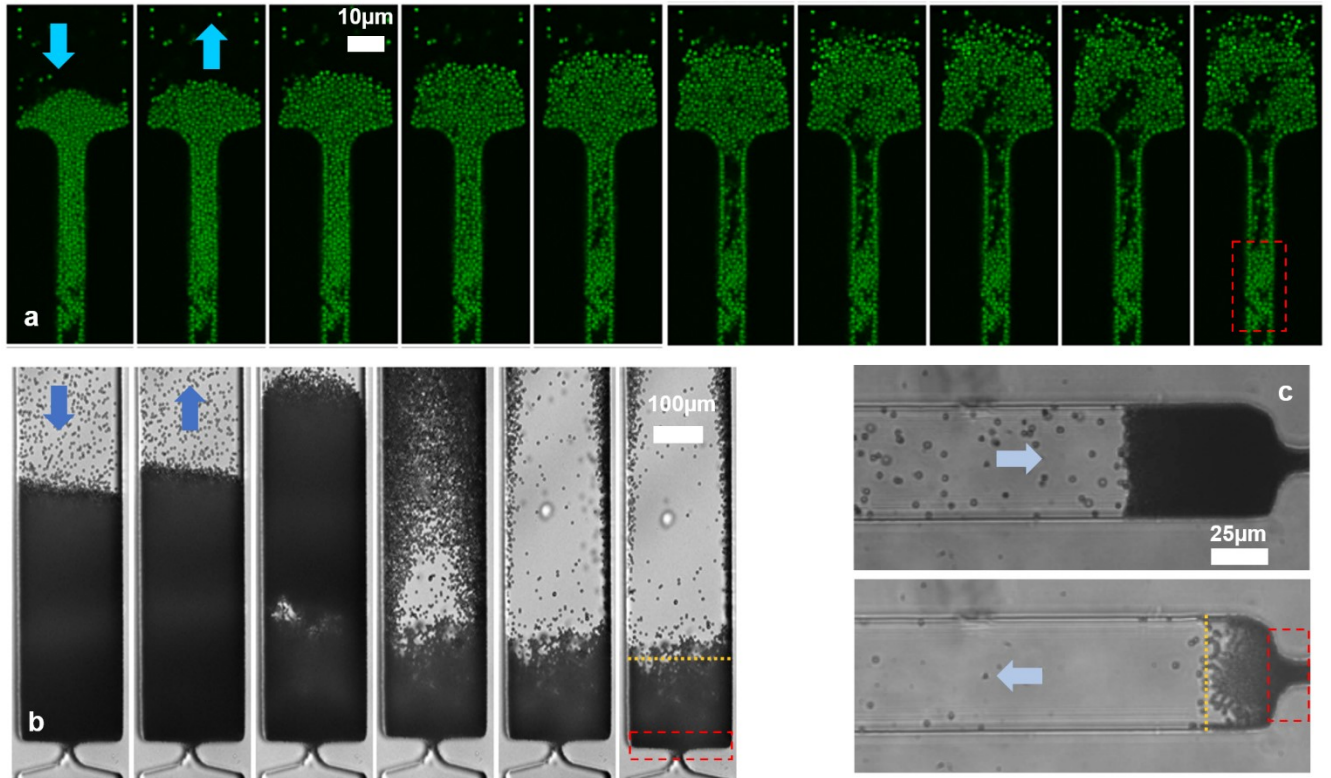
Sup. Figure 3: Final image after the de-clogging of a channel for various ionic strength. The reversal flow direction is from left to right. The dotted lines delimit the end of the cohesive part for each image while the distance between the clog heads and the dashed lines correspond to L_{dep} .



Sup. Figure 4: Histogram of the length of the rearrangement events, L_{events} with a mean values of $6.9\mu\text{m}$ for a $2\mu\text{m}$ suspension with $I=1\text{mM}$.



Sup. Figure 5: Final image after the de-clogging of a channel for various applied pressures. The reversal flow direction is from left to right. The dotted lines delimit the end of the cohesive part for each image while the distance between the clog heads and the dashed lines correspond to L_{dep} .



Sup. Figure 6: (a) Confocal images of a de-clogging experiments for $1.8\mu\text{m}$ PMMA particles inside a channel with $H=11\mu\text{m}$ and $W=9\mu\text{m}$. The particle accumulation was formed at 30mbar (1st image on the left) and we zero the pressure thereafter, from the 2nd image up to the last one on the right. We focus at the middle height of the channel to show that there is no particle in the bulk after de-clogging. De-clogging of a single channel filled with $4\mu\text{m}$ PS at 35mbar (b) or $2\mu\text{m}$ PS at 10mbar (c) inside a channel with $H=50$ and $53\mu\text{m}$ and $W=200$ and $50\mu\text{m}$, respectively. In both cases we also zero the pressure, which leads to flow reversal. Dashed rectangles correspond to the clog head while the dotted lines is the end of the deposition zone of particles on the channel surfaces, as in Sup. figure 3 and 5. The arrows point to the flow direction.

$2\mu\text{m}$					$1.8\mu\text{m}$				
	Single	Doublet	Triplet	Aggregate		Single	Doublet	Triplet	Aggregate
No salt	99.73	0.23	0.02	0.03	No salt	99.84	0.16		
10mM	98.87	0.90	0.11	0.11	10mM	99.53	0.32	0.05	0.10
50mM	98.81	1.16	0.04		50mM	98.93	0.86	0.11	0.09
100mM	89.78	8.17	1.45	0.60	100mM	88.00	9.11	1.86	1.02
					150mM	86.44	10.91	1.82	0.83
					200mM	23.89	20.18	14.73	41.20

Sup. Table: The composition of the accumulations as a percentage for $2\mu\text{m}$ PS (left) and $1.8\mu\text{m}$ PS (right) particles for various salt concentrations.