



# **Taxonomic study of *Lebinthus* Stål, 1877 (Orthoptera: Gryllidae: Eneopterinae) with description of six new species in the Philippines**

Jessica Baroga-Barbecho, Ming Kai Tan, Sheryl Yap, Tony Robillard

## **► To cite this version:**

Jessica Baroga-Barbecho, Ming Kai Tan, Sheryl Yap, Tony Robillard. Taxonomic study of *Lebinthus* Stål, 1877 (Orthoptera: Gryllidae: Eneopterinae) with description of six new species in the Philippines. *Zootaxa*, 2020, 4816 (4), pp.401-438. 10.11646/zootaxa.4816.4.1 . hal-03884570

**HAL Id: hal-03884570**

**<https://hal.science/hal-03884570>**

Submitted on 5 Dec 2022

**HAL** is a multi-disciplinary open access archive for the deposit and dissemination of scientific research documents, whether they are published or not. The documents may come from teaching and research institutions in France or abroad, or from public or private research centers.

L'archive ouverte pluridisciplinaire **HAL**, est destinée au dépôt et à la diffusion de documents scientifiques de niveau recherche, publiés ou non, émanant des établissements d'enseignement et de recherche français ou étrangers, des laboratoires publics ou privés.

# Taxonomic study of *Lebinthus* Stål, 1877 (Orthoptera: Gryllidae: Eneopterinae) with description of six new species in the Philippines

JESSICA B. BAROGA-BARBECHO<sup>1,\*</sup>, MING KAI TAN<sup>2</sup>, SHERYL A. YAP<sup>3,4</sup> & TONY ROBILLARD<sup>2</sup>

<sup>1</sup>Office of the Vice Chancellor for Research and Extension, University of the Philippines Los Baños, College, Laguna, 4031 Philip- pines.

<sup>2</sup>Institut de Systématique, Evolution et Biodiversité (ISYEB), Muséum national d'Histoire naturelle, CNRS, SU, EPHE, UA, 57 rue Cuvier, CP 50, 75231 Paris Cedex 05, France.

<sup>3</sup>Institute of Weed Science, Entomology and Plant Pathology, University of the Philippines Los Baños, College, Laguna, 4031 Philip- pines.

<sup>4</sup>Museum of Natural History, University of the Philippines Los Baños, College, Laguna, 4031 Philippines.

\*corresponding author

## Abstract

The genus *Lebinthus* Stål, 1877 (Orthoptera: Gryllidae: Eneopterinae: Lebinthini) in the Philippines is studied. New locality records are provided for *L. bitaeniatus* Stål, *L. sanchezi* Bolívar, *L. polillensis* Baroga, Yap & Robillard, *L. puyos* Robillard, and *L. luae* Robillard & Tan. Six new species are described from Mt. Porras, Sibalom (*L. dannybaletei* **sp. nov.**), Mt. Balatukan, Misamis Oriental (*L. parvus* **sp. nov.**), Mt. Empagatao, Misamis Oriental (*L. palaceus* **sp. nov.**), Tarumpitao, Palawan (*L. hamus* **sp. nov.**), Mt. Malinao, Albay (*L. magayon* **sp. nov.**), and Boracay, Aklan (*L. boracay* **sp. nov.**). A distribution map, a taxonomic key, and an updated checklist of the genus in the Philippines are also provided.

**Key words:** checklist, distribution, key, Lebinthini, redescription, Southeast Asia, taxonomy

## Introduction

*Lebinthus* Stål, 1877 is the third most diverse genus under the tribe Lebinthini, with 17 species worldwide, many of which are widely distributed in Southeast Asia. Most species of this genus can be easily recognized by their average size, brachypterous wings, and their male genitalic features with short pseudepiphallic lophi. Species of *Lebinthus* produce calling songs with high-frequencies, sometimes with completely ultrasonic frequencies (Robillard & Desut- ter-Grandcolas, 2004b; Robillard, 2010). Behavioral studies also demonstrated a unique communication including vibrational responses of the female to the high-frequency call of the male (ter Hofstede *et al.*, 2015). Additionally, *Lebinthus* was also found to be a major prey of charismatic vertebrate species (e.g., common palm civets) among other species of orthopterans (Fung *et al.*, 2018), but little is known beyond this study about the ecological niches of these crickets. Their wide distribution also allows the study of intra-specific variations in behaviors and life history, thus suggesting that species of *Lebinthus* can be useful study organisms. However, as with many orthopterans from Southeast Asia, undescribed species from this genus are yet to be discovered with increasing sampling effort (Tan *et al.*, 2017). This in turn will also expand our understanding of species delimitation, distribution, and identification. A clear and accurate understanding of the taxonomy is paramount if these crickets are to be further used as model subjects for behavioral, evolutionary, and ecological studies.

In the last decade, several studies have revised or described species of the genus in the Philippines. Robillard & Tan (2013) re-examined the type species using recently collected specimens of *L. bitaeniatus* Stål, 1877 found in the Philippines. They described a new species—*L. luae* Robillard & Tan, 2013—from Singapore and South Sumatra, and redescribed *L. bitaeniatus* using modern taxonomic criteria.

Another study conducted by Robillard *et al.* (2013) focused on the species found in Mt. Makiling: In this study, *L. sanchezi* Bolívar, 1889 was redescribed and *L. makilingus* Otte, 2007 was synonymized under *L. sanchezi*. Moreover, a new species from Mt. Makiling—*L. puyos* Robillard, 2013—was also described. These two taxonomic reviews provided a clear reference for *Lebinthus* species in the Philippines.

Later, Robillard & Yap (2015) described a species in Visayas Islands—*L. estrellae* Robillard, 2015—and reported specimens of *L. luae*, a species previously known to occur only in Singapore, from several secondary forests in Leyte, thereby extending the geographical distribution of the species. More recently, Baroga *et al.* (2016) described *L. polillensis* Baroga, Yap & Robillard, 2016 from Polillo Island and provided the first key to known Philippines' eneopterine species, including *Lebinthus*. The Philippines currently has a total of six *Lebinthus* species.

In this paper, we make new locality records for *L. bitaeniatus*, *L. sanchezi*, *L. polillensis*, *L. puyos*, and *L. luae*. We also describe six new species of *Lebinthus* from Mt. Porras, Sibalom (*L. dannybaletai* **sp. nov.**), Mt. Balatukan, Misamis Oriental (*L. parvus* **sp. nov.**), Mt. Empagatao, Misamis Oriental (*L. palaceus* **sp. nov.**), Tarumpitao, Palawan (*L. hamus* **sp. nov.**), Mt. Malinao, Albay (*L. magayon* **sp. nov.**), and Boracay, Aklan (*L. boracay* **sp. nov.**). A taxonomic key, a distribution map, and an updated checklist of the genus *Lebinthus* in the Philippines are also provided. With these findings, we are able to contribute additional information on the diversity and taxonomy of these crickets in the country.

## Materials and Methods

### Material examined

Newly collected specimens studied herein come from selected forested areas in the Philippines. These crickets were captured during day and night using sweep nets or by hand using a wide-mouthed plastic vial. Specimens were preserved in 80% ethyl alcohol or absolute analytical grade ethanol. Type and non-type specimens from personal collections and donations were deposited at UPLBMNH, PNM, and MNHN. The institutions/museums and their acronyms where specimens were loaned from or were deposited in, are listed below. Information in brackets in the lists of materials refers to information not present on specimens' labels.

### Observations and morphological analysis

Direct observations and dissections of male and female genitalia were made using a dissecting microscope. General morphology follows terminology by Ragge (1955), Desutter-Grandcolas (2003), and Robillard & Desutter-Grandcolas (2004). Dissection and preservation of male and female genitalia as well as the measurements of characters follows Robillard & Yap (2015) and Baroga *et al.* (2016). To highlight the structural components of male and female genitalia, water solution containing a drop of JBL Punktol was used. Photographs of the habitus, genitalia, and other important morphological characters were taken using AmScope MU1000 digital camera and Canon EOS 50D digital SLR camera with a macro photo lens MP-E 65 mm f/2.8 USM (1–5×). Canon Macro Twin Lite MT-24EX and Canon Macro Ring Lite MR-14EX were used for lighting and flash. Image editing was accomplished using Adobe Photoshop CC 2014.

### Acoustic analyses

The basic cricket song terminology follows Ragge & Reynolds (1998). One song unit is called a syllable and corresponds to one opening-closure cycle of the male forewings.

The recordings of *L. puyos* were made with a modified Condenser Microphone Capsule CM16 (Avisoft Bioacoustics, Berlin), with a flat frequency response from 3 to 150 kHz (R. Specht pers. comm.), connected to a Tascam HD-P2 digital recorder (96 kHz sampling frequency, 16 bit) in the field, or using Avisoft Triggering Harddisk Recorder version 2.97 and an 8-Pre MOTU sound card at a sampling frequency of 96 k-samples/s (16 bit). Song features were measured using Avisoft Lite 2.0.0 and the 'specan' function in the open source R package *WarbleR*.

version 1.1.14 (Araya-Salas & Wright, 2017) in the R software version 3.5.1 (R Development Core Team, 2018). To generate power spectra using FFT, we used the function 'spec' at 256,000 sampling frequency, using the Hanning window of window length 512. All recording files are deposited in the Sound Library of the MNHN.

## Abbreviations

### Descriptions:

General morphology: FW, forewing; HW, hindwing; Tarsomere III-1, III-3: first and third segments of hind leg tarsomere. Tegminal venation: 1A–4A, first to fourth anal veins; CuA, anterior cubitus; CuA1, CuA2, ... first, second, ... bifurcations of CuA; CuP, posterior cubitus; M, median vein; R, radial vein; Sc, subcostal vein; c1–3, first to third cells of C alignment; d1 cell (mirror), first cell(s) of D alignment.

### Measurements:

FIII, length of hind femora; FIIW, width of hind femora; FWL, forewing length; FWW, forewing width (at the level of maximal width); OL, ovipositor length; PronL, pronotum length; PronW, pronotum width; TIIL, length of hind tibiae.

### Institutions:

BPBM	Bernice P. Bishop Museum, Honolulu, Hawaii, USA;
IWEP-Taxo. Lab.	Institute of Weed Science, Entomology, and Plant Pathology-Taxonomy Laboratory, UP Los Baños, Laguna, Philippines;
MNHN	Muséum national d'Histoire naturelle, Paris, France;
PNM	Philippine National Museum, Manila, Philippines;
OMNH	Osaka Museum of Natural History, Osaka, Japan;
UPLBMNH	University of the Philippines Los Baños Museum of Natural History, Laguna, Philippines; ZIN Zoological Institute of Russian Academy of Sciences, Russia;
ZRC	Zoological Reference Collection, Lee Kong Chian Natural History Museum, Singapore.

## Systematic part

### Key to species of *Lebinthus* Stål, 1877 in the Philippines

1. Body with yellowish/whitish longitudinal bands along the whole body. Male FWs without a rounded false mirror in the harp. .... 2
- Body without yellowish/whitish longitudinal bands along the whole body. Male FWs with a rounded false mirror in the harp. .... 4
2. Longitudinal yellowish band wide, without a black line ventrally. Face with two black squarish spots between scapes. .... *L. luae* Robillard & Tan, 2013
- Longitudinal yellowish band thin, underlined ventrally by a narrow black line. Face with a black band between scapes. .... 3
3. Longitudinal lateral yellowish band on tergites usually more distinct. Black facial band between scapes thicker, broader than the antennal fossa. Male genitalia: Pseudepiphallic parameres with inner lobe more triangular with more acute apex. Distribution: Palawan, Mindoro, Luzon. .... *L. bitaeniatatus* Stål, 1877
- Longitudinal lateral yellowish band on tergites usually faded. Black facial band between scapes thinner, thinner than the antennal fossa. Male genitalia: Pseudepiphallic parameres with inner lobe more rounded and stouter. Distribution: Boracay. .... *L. boracay* **sp. nov.**
4. Face generally whitish. .... 5

- Face generally dark brown or black..... 6
- 5. Face mostly whitish, apex of fastigium without contrasted orange. Male genitalia with longer parallel lophi, pseudepiphallic parameres C-shaped. Female tegmina touching each other with apex more angular. Distribution: Luzon . . . . . *L. puyos* Robillard, 2013
  - Face with whitish bands below eyes, clypeus black with yellow edge. Male genitalia with short rounded lophi. Female tegmina clearly separated from each other with apex rounded. Distribution: Leyte . . . . . *L. estrellae* Robillard, 2015
- 6. Pronotal lateral lobe generally dark brown with some light yellow pattern at ventral half..... 7
  - Pronotal lateral lobe black or dark brown dorsally, ventral margin yellow with a median black pattern ..... 9
- 7. Female tegmina touching each other with apex angular. Distribution: currently known only from Panay. . . . .
  - ..... *L. dannybaletei* **sp. nov.**
  - Female tegmina clearly separated, not touching each other; apex rounded. Distribution: not known from Panay ..... 8
- 8. Larger, PL 2.8 mm. Female tegmina longer, reaching middle of second tergite; with five longitudinal veins. Apex of female ovipositor without denticulation. Female copulatory papilla pentagonal shape. Distribution: Luzon (only female known) . . . .
  - ..... *L. magayon* **sp. nov.**
  - Smaller, PL < 2.5 mm. Female tegmina shorter, reaching posterior end of first tergite; with six longitudinal veins. Apex of female ovipositor with denticulation. Female copulatory papilla cylindrical, narrowing apically. Distribution: Mindanao. . . .
    - ..... *L. parvus* **sp. nov.**
- 9. Male genitalia with pseudepiphallic lophi stout, about as long as wide (width at the base). Female tegmina touching (or nearly) each other with apex angular or very far from each other with apex rounded ..... 10
  - Male genitalia with pseudepiphallic lophi more elongated, longer than wide (width at the base). Female tegmina always touching (or nearly) each other with apex angular..... 11
- 10. Larger, PL ~2.7 mm. Male genitalia with pseudepiphallic parameres spade-shaped. Mirror (d1) of male tegmen with basal margin rounded. Female tegmina touching each other with apex angular. Distribution: Mindanao ..... *L. palaceus* **sp. nov.**
  - Smaller, PL ~2.1 mm. Male genitalia with pseudepiphallic parameres F-shaped. Mirror (d1) of male tegmen with basal margin angular. Female tegmina very far from each other with apex rounded. Distribution: Luzon . . . . . *L. sanchezi* Bolívar, 1889
- 11. Very large, PL ~2.5 mm. Male genitalia with pseudepiphallic lophi more cylindrical and pointing externally. Female tegmina nearly touching each other. Distribution: Palawan ..... *L. hamus* **sp. nov.**
  - Much smaller, PL ~2.1 mm. Male genitalia with pseudepiphallic lophi triangular and pointing posteriorly. Female tegmina touching each other, partly overlapping. Distribution: Luzon, Negros Oriental . . *L. polillensis* Baroga, Yap & Robillard, 2016

## Family Gryllidae

### Subfamily Eneopterinae Saussure, 1874

#### Tribe Lebinthini Robillard, 2004 Genus

#### *Lebinthus* Stål, 1877

*Lebinthus* Stål, 1877: 35.

**Type species.** *Lebinthus bitaeniatus* Stål, 1877

**Diagnosis.** Mostly small to average in size, brachypterous in both sexes, characterized by the presence of the yellow lateral band on FWs and along the whole body in some species. The genus includes two groups of species, one characterized by a rounded false mirror in the harp in male FWs, and one characterized by longitudinal yellowish bands along the whole body.

**Distribution.** Japan; Taiwan; Indonesia; Malaysia; Singapore; Brunei; Philippines; Palau (Fig. 1)

**Included species and distribution.** Twenty three species are known worldwide, including six new species added to the genus in this paper. They are listed (TL = type locality) below in chronological order based on description year. Information about distribution is provided, including country in bold, followed by islands where records are available for the species:

***Lebinthus bitaeniatus* species group—characterized by longitudinal yellowish bands along the whole body:**

- L. bitaeniatus* Stål, 1877—**Philippines** (TL): Luzon, Palawan, Mindoro, Masbate  
*L. lanyuensis* Oshiro, 1996—**Taiwan**: Lanyu I. (TL)  
*L. luae* Robillard & Tan, 2013—**Singapore** (TL); **Philippines**: Luzon, Leyte, Cebu, Palawan, Sulu Is; **Indonesia**: Sumatra, West Java, Riau Is, Sulawesi; **Palau**  
*L. boracay* **sp. nov.**—**Philippines**: Boracay (TL)

***Lebinthus sanchezi* species group—characterized by rounded false mirror in the harp in male FWs:**

- L. sanchezi* Bolívar, 1889—**Philippines**: Luzon  
*L. truncatipennis* Chopard, 1929—**Indonesia**: Sumatra, West Java, Sipora I.  
*L. yaeyamensis* Oshiro, 1996—**Japan**: Yonaguni I. (TL)  
*L. villemantae* Robillard, 2010—**Indonesia**: Sulawesi  
*L. puyos* Robillard, 2013—**Philippines**: Luzon (TL)  
*L. estrellae* Robillard, 2015—**Philippines**: Leyte (TL)  
*L. polillensis* Baroga, Yap & Robillard, 2016—**Philippines**: Polillo I. (TL), Luzon, Negros Oriental  
*L. sandakan* Tan, Japir, Chung & Robillard, 2019—**East Malaysia**: Sabah  
*L. dannybaletei* **sp. nov.**—**Philippines**: Panay (TL)  
*L. hamus* **sp. nov.**—**Philippines**: Palawan (TL)  
*L. magayon* **sp. nov.**—**Philippines**: Luzon  
*L. palaceus* **sp. nov.**—**Philippines**: Mindanao  
*L. parvus* **sp. nov.**—**Philippines**: Mindanao

*Incertae sedis:*

- L. punctatus* (Brunner von Wattenwyl, 1898)—**Indonesia**: Maluku  
*L. striolatus* (Brunner von Wattenwyl, 1898)—**Indonesia**: Maluku  
*L. flavipalpis* Chopard, 1931—**Indonesia**: West Papua (TL)  
*L. leopoldi* Chopard, 1931—**Indonesia**: West Papua (TL)  
*L. ambonensis* Robillard, 2010—**Indonesia**: Ambon (TL)  
*L. buruensis* Robillard, 2010—**Indonesia**: Buru (TL)

**Account of *Lebinthus* from the Philippines**

***Lebinthus bitaeniatus* Stål, 1877**

(Figs. 1, 2, 3)

*Lebinthus bitaeniatus* Stål, 1877: 35 (original description); Bolívar, 1889: 425; Chopard, 1968: 354; Robillard & Desutter-Grandcolas, 2004a: 275; 2006: 644; 2008: 67 (phylogeny and taxonomy); Robillard & Tan, 2013: 712 (redescription); Baroga *et al.* 2016: 94 (taxonomic key); Schneider *et al.*, 2017: 1–12.

**Type material.** Holotype female. **Philippines.** Ins. Philipp., semper, 24-25/5-64 (NHRM-ORTH0012705) [examined, photo in Robillard & Tan, 2013]

**Other material examined.** **Philippines.** Luzon: Zambales, Malabayuan River, SBFR, 1♂ (JBB206), 25.iv.1998, coll. V.P.G. & M.G.S. (IWEP Taxo Lab-03008), left fore leg for molecular analysis (L142, IWEP Taxo Lab-03008); Bataan, Orani, Singtala, Mt. Natib, 1♂ (JBB161), 29.i–11.ii.2015, coll. J.B. Baroga, P.A.C. Buenavente (PNM); Laguna: UPLB, Mt. Makiling: 50 m, 1♂ (JBB296), 10.xi.1976, coll. C.R. Baltazar (UPLBMNH ORT-01139); 1♀ (JBB303), 11.iii.1989, coll. P. So-an (UPLBMNH ORT-01146); 50 m, 1♀ (JBB304), 28.ix.1948, coll. L.B. Uichanco



(UPLBMNH ORT-01147); 50 m, 1♀ (JBB306), 21.ii.1949, coll. G.B. Viado (UPLBMNH ORT-01149); 50 m, 2♀ (JBB305, JBB344), 16.ix.1950, coll. L.B. Uichanco (UPLBMNH ORT-01148); shrubs, 1♀ (JBB311), 22.ix.1974, coll. N.G. Fabellar (UPLBMNH ORT-01154); 2♂ (JBB336–337), 19.iii.1985, coll. C.L. Dayanon (UPLBMNH ORT-01179–01180); 1♂ (JBB321), 23.iii.1986, coll. E. Oratai (UPLBMNH ORT-01164); 1♀ (JBB345), 1986, coll. B. Chantana (UPLBMNH ORT-01188); 1♀ (JBB329), 14.i.1987, coll. E.S. Solsoloy (UPLBMNH ORT-01172); 1♀ (JBB343), 30.xi.1988, coll. C.R. Bravo (UPLBMNH ORT-01186); 1♂ (JBB209), 31.i.2004, coll. G.D. Damao (IWEPTaxo Lab-02993); 1♂ (JBB013), 06.i.2014, coll. J.B. Baroga (UPLBMNH); 1♂ (JBB018), 15–16.ii.2014, coll. N.M. Barbecho (UPLBMNH); 1♂ (JBB027), 27.iv.2014, coll. J.B. Baroga (UPLBMNH); 3♀ (JBB102–104), 06.viii.2014, coll. J.B. Baroga (UPLBMNH); 2♂ (JBB107–108), 15.viii.2014, coll. J.B. Baroga (UPLBMNH); 1♀ (JBB176), 03.iv.2014, coll. J.B. Baroga (UPLBMNH); 1♀ (JBB223), 14.ii.2016, coll. Kath Dizon (IWEPTaxo Lab-30235); Mudspring: 1♂ (JBB210), 12.xi.1988, coll. V.G. (IWEPTaxo Lab-02999); 1♂ (JBB208), 17.i.2009, coll. C.M.B. Jarilla (IWEPTaxo Lab-02997); Makiling, Eco Trail, 1♂ (JBB212), 02.iv.2016, coll. J.E. Umerez (IWEPTaxo Lab-30232); [Makiling Botanic Garden] MBG: ex. grass, 1♀ (JBB329), i.1980, coll. M.C. Mendoza (UPLBMNH ORT-01173); 1♀ (JBB351), 21.ix.1980, coll. E.R. deGuia (UPLBMNH ORT-01194); 1♂ (JBB294), 18.vii.1987, coll. A. Ngatidjo (UPLBMNH ORT-01137); 1♂ (JBB211), 9.viii.1989, coll. Magcaring (IWEPTaxo Lab-03004); 1♂ (JBB293), ix.1989, coll. Rillon (UPLBMNH ORT-01136); 1♀ (JBB302), 28.ix.1990, coll. G. Barroga (UPLBMNH ORT-01145); UPLB: 1♀ (JBB225), vi.2003, coll. MRMMUAD (IWEPTaxo Lab-02998); 1♂ (JBB213), 29.iii.2009, coll. N.A.Q. Manalo (IWEPTaxo Lab-02996); 1♀ (JBB221), 29.iii.2009, coll. R.E. Bayot (IWEPTaxo Lab-02995); 1♀ (JBB224), 28.vi.2014, coll. MRMMUAD (IWEPTaxo Lab-03000); College: 1♂ (JBB317), 2♀ (JBB350, 352), 8.v.1958, coll. D.A. Galvez (UPLBMNH ORT-01160) (UPLBMNH ORT-01193, 01195); 1♀ (JBB353), 9.v.1958, coll. Bernardo (UPLBMNH ORT-01196); 50 m, 1♂ (JBB292), 14.v.1958, coll. S. Gallardo (UPLBMNH ORT-01135); 1♂ (JBB319), 16.v.1971, coll. L.A. Malabayoc (UPLBMNH ORT-01162); grasses, 1♀ (JBB346), 7.ix.1974, coll. P.B. Epino (UPLBMNH ORT-01189); Los Baños: 1♀ (JBB348), 29.v.1947, coll. L.B. Uichanco (UPLBMNH ORT-01191); 50 m, 1♂ (JBB295), 30.xii.1963, coll. R.G. Basio (UPLBMNH ORT-01138); 50 m, 1♀ (JBB307), 20.v.1963, coll. W.M. Amorica (UPLBMNH ORT-01150); 50 m, 2♀ (JBB308–309), 30.xii.1963, coll. R.G. Basio (UPLBMNH ORT-01151–01152); 100 m, 1♀ (JBB347), 6.ii.1965, coll. I.P. Novero (UPLBMNH ORT-01190); 1♀ (JBB310), 25.xi.1982, coll. E. Narong (UPLBMNH ORT-01153); 1♂ (JBB214), i.2004, coll. JOAN (IWEPTaxo Lab-03002); 1♀ (JBB220), 18.viii.2008, coll. K.B. Saliendra (IWEPTaxo Lab-02994); 1♀ (JBB222), 14.ii.2016, coll. JAD ADA (IWEPTaxo Lab-30230); Anos: 2♀ (JBB301, 312), 2.ix.1990, coll. A.U. Garcia (UPLBMNH ORT-01144, 01155); Puting Lupa: 1♀ (JBB219), 08.ii.1986, coll. E. Oratal (IWEPTaxo Lab-03003); Quezon Province: Atimonan, Quezon Nat'l Park, 1♂ (JBB291), 11.ix.1976, coll. V.P. Gapud (UPLBMNH ORT-01134); Mt. Banahaw, 1♀ (JBB355), 9.ix.1995, coll. P. Santos (UPLBMNH ORT-01198); SOR[Sorsogon], Iros [Irosin], Patag, shrubs, 1♀ (JBB218), 10.xii.2009, coll. M.J. Beltran (IWEPTaxo Lab-03007); [Masbate] Aroroy, 2♂, 1♀ (JBB418–420) (MNHN-ENSIF 1425, 1419, 1426); Mindoro: 2♀ (JBB421–422) (MNHN-ENSIF 1420–1421); Palawan: Quezon: alt. 5–50 m (W. coast of Palawan), 1♀, 1♂ (JBB406–407), 10.xii.1969, coll. Yorio Miyatake (OMNH); 1♀ (JBB408), 13.xii.1969, coll. Yorio Miyatake (OMNH); Busuanga Is.: env. of Coron (S. coast), 2♂, 1♀ (JBB399–401), 21–23.ii.2004, coll. A.V. Gorochoy (ZIN); env. of Sabang (W. coast), 1♂ (JBB402), 1–2.iii.2004, coll. A.V. Gorochoy (ZIN); env. of Taytay (E. coast), 1♂, 2♀ (JBB403–405), 25–26.ii.2004, coll. A.V. Gorochoy (ZIN); Puerto Princesa, San Vicente, Port Barton, Secret Paradise Resort, coll. J.B. Baroga, S.A. Yap, T. Robillard, F. Legendre (UPLBMNH): 2♀, 1♂ (JBB044–047), 3♂, 1♀ (JBB048–050), 30.vii.2014; 1♂ (JBB060), 5♀ (JBB061–065), 31.vii.2014; 4♀, 1♂ (JBB080–084), 01.viii.2014; 2♂, 3♀ (JBB088–092), 02.viii.2014; Concepcion, Mt. Ababalnon, coll. J.B. Baroga, S.A. Yap, T. Robillard, F. Legendre (UPLBMNH): 1♂ (JBB101), 04.viii.2014.

**Type locality.** Philippines [no specific locality].

**Distribution.** (Fig. 1) Philippines: Zambales, Malabayuan River (**new locality record**); Bataan, Mt. Natib (**new locality record**); Laguna, Mt. Makiling & Puting Lupa; Quezon Province: Atimonan, Quezon National Park (**new locality record**), Mt. Banahaw (**new locality record**); Sorsogon, Irosin (**new locality record**); Masbate, Aroroy (**new locality record**); Mindoro (**new locality record**); Palawan: Puerto Princesa, Port Barton (**new locality record**), Concepcion, Mt. Ababalnon (**new locality record**), Coron, Busuanga; Taytay & Quezon (**new locality record**).

**Diagnosis.** This species differs from the other species in the *bitaeniatus* group by its more slender body shape, lighter coloration, a thinner yellow longitudinal band along the body and which is underlined ventrally by a narrow black line, and strong M-shaped sclerotization of ectophallic fold in male genitalia (Robillard & Tan, 2013).

**Habitat.** The species lives in shrubs, grasses, at low to average elevations (50–100 m) in open secondary habitats.

***Lebinthus sanchezi* Bolívar, 1889**

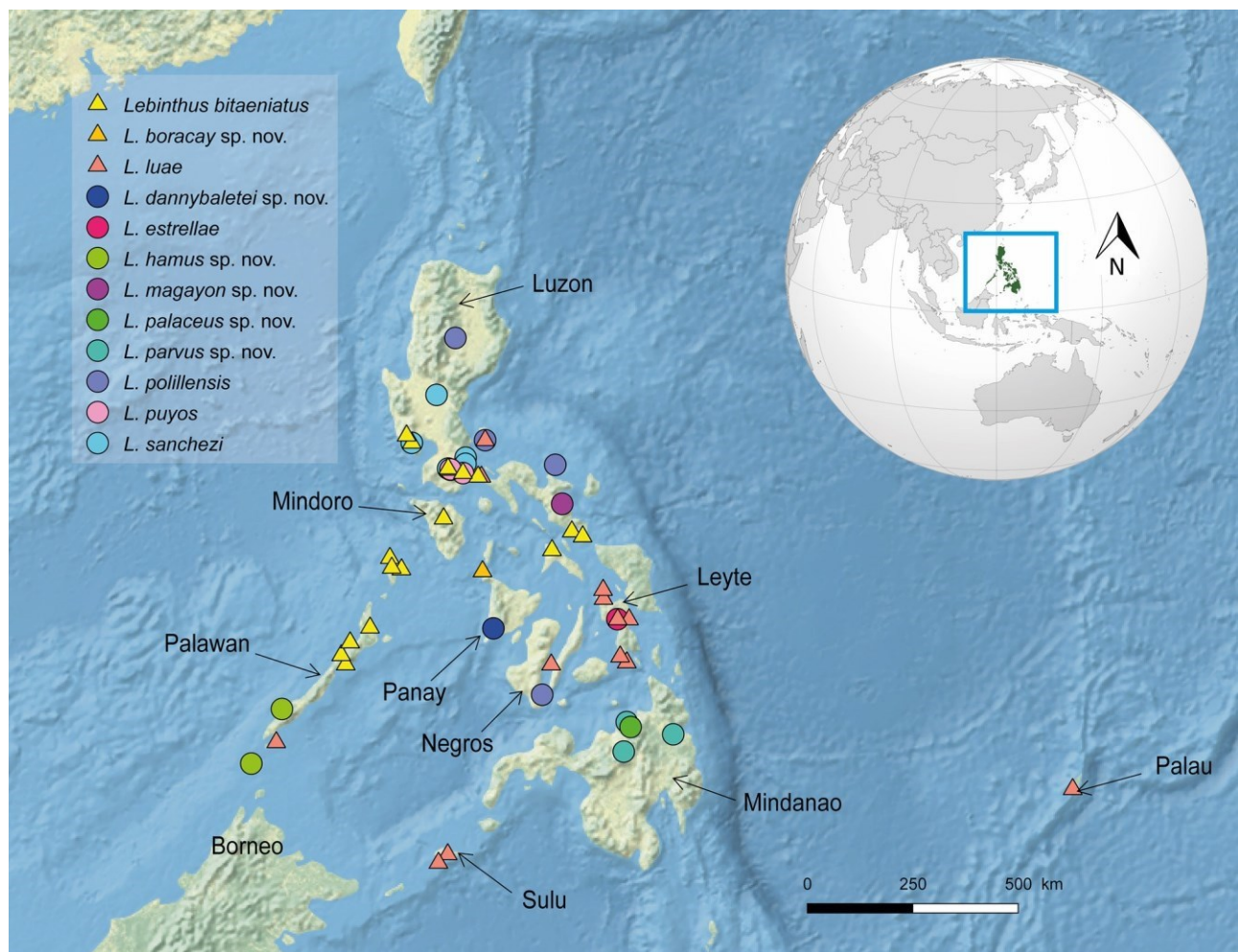
(Figs. 1, 4, 5)

*Lebinthus sanchezi* Bolívar, 1889: 425 (original description); Casto de Elera, 1895: 219; Kirby, 1906: 88; Bruner, 1915: 263; Chopard, 1968: 354; Robillard *et al.*, 2013: 52 (redescription); Baroga *et al.*, 2016: 94 (taxonomic key).

**Type material.** Neotype male. **Philippines.** Luzon: Paete [Pakil], University of the Philippines Laguna Land Grant, secondary forest at 500 m from station, 14°23'56.9"N 121°32'47.2"E, 376 m (GPS LG2), 4.vii.2011, day, leaf litter, coll. T. Robillard (UPLBMNH) [examined]. Paraneotypes. 2♂, 1♀ (UPLBMNH), 3♂, 1♀ (MNHN) [examined], same information as NT.

**Other material examined.** **Philippines.** [Luzon]: Nueva Ecija, CLSU, 1♀ (JBB314), 16.xi.1985, coll. T.M. Aganon (UPLBMNH ORT-01157); Bataan, Orani, Singtala, Mt. Natib, 1♀ (JBB162), 29.i–11.ii.2015, coll. J.B. Baroga & P.A.C. Buenavente (PNM); Laguna: Puting Lupa, 1♂ (JBB320), 8.iii.1986, coll. E. Oratai (UPLBMNH ORT-01163); Cavinti, 1♂ (JBB182), 26.v.2014, coll. N.M. Barbecho (UPLBMNH ORT-00875); UPLB, Mt. Makiling: 1500 ft, 1♂ (JBB338), 26.iv.1958, coll. D.A. Galvez (UPLBMNH ORT-01181); 1♂ (JBB017), 15–16.ii.2014, coll. N.M. Barbecho (UPLBMNH).

**Type locality.** Philippines. Luzon: Paete [Pakil], University of the Philippines Laguna Land Grant, secondary forest at 500 m from station.



**FIGURE 1.** Distribution of *Lebinthus* in the Philippines. Triangular symbols refer to species of the *bitaeniatus* species group; round symbols to species of the *sanchezi* species group.





FIGURE 2. *Lebinthus bitaeniatus* male (A) and female (B) adults in their natural environment in Mount Makiling (Luzon).





**FIGURE 3.** *Lebinthus bitaeniatus* nymph (A) and male and female adults in pre-copulatory mode (B) in their natural environment in Mount Makiling (Luzon).



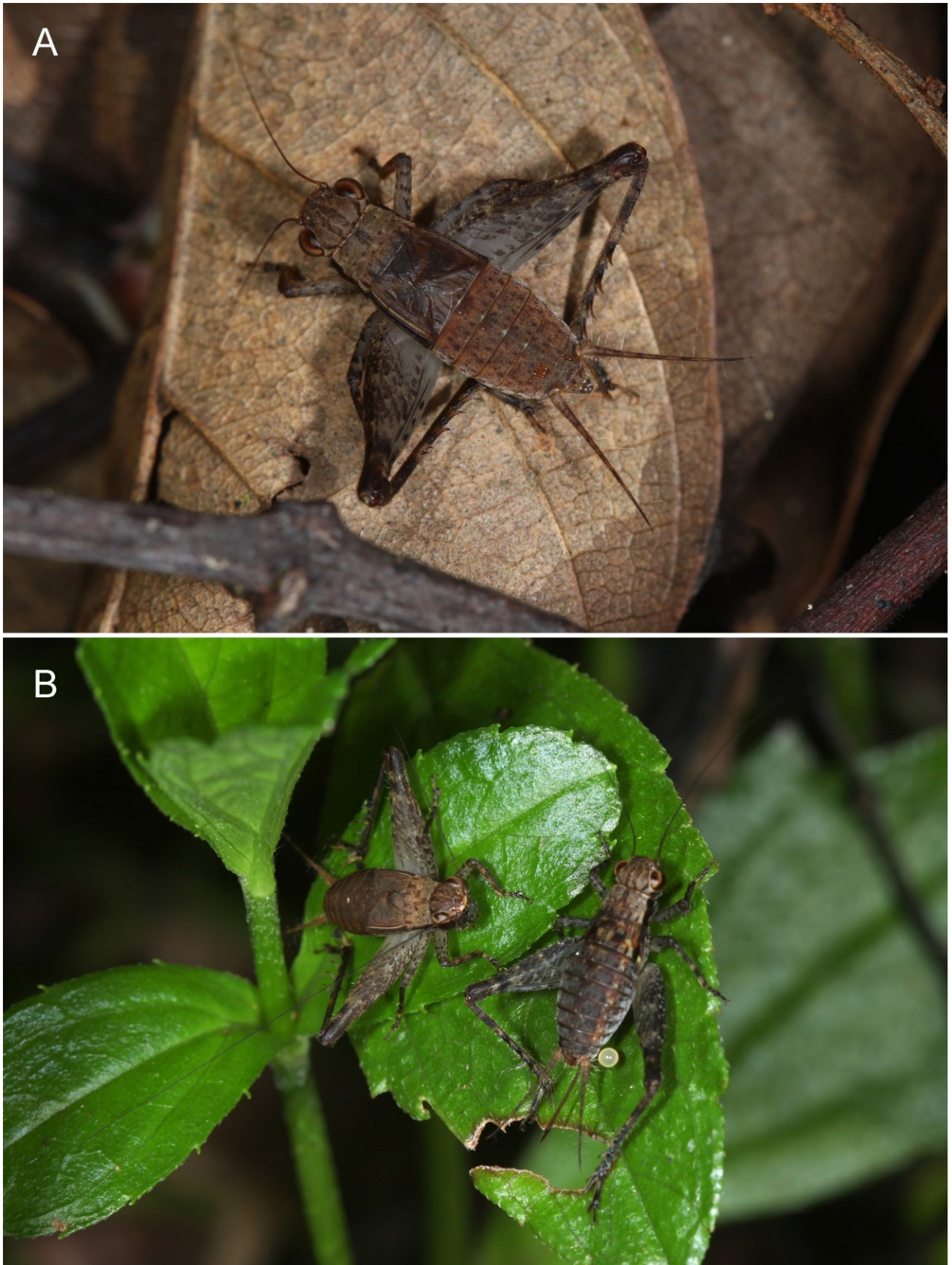


FIGURE 4. *Lebinthus sanchezi* male adult (A) and male and female adults mating (B) in their natural environment in Paete (Luzon).





FIGURE 5. *Lebinthus sanchezi* nymphs in their natural environment in Paete (Luzon).

**Distribution.** (Fig. 1) Philippines: Bataan, Mt. Natib (**new record**); Nueva Ecija, CLSU (**new record**); Laguna: Paete, UPLB Land Grant, Puting Lupa, Cavinti (**new record**), Mt. Makiling.

**Diagnosis.** This species is close to *L. puyos* from which it differs by having a black face and male genitalia with little differentiated triangular pseudepiphallidic lophi and F-shaped pseudepiphallidic parameres (Robillard *et al.*, 2013).

**Habitat.** This species lives underneath leaf litter of secondary forested areas and sometimes on top of leaves of small bushes or plants (Robillard *et al.*, 2013). A specimen from Mt. Natib in Orani, Bataan was also collected in a dry, slightly concrete path near residential houses.

### ***Lebinthus puyos* Robillard, 2013**

(Figs. 1, 6, 7)

*Lebinthus puyos* Robillard, 2013: 49 (original description); Baroga *et al.* 2016: 94 (taxonomic key).

**Type material.** Holotype male. **Philippines.** Luzon: Laguna, Los Baños, Mount Makiling, base, secondary forest on campus, 14°09'12.9"N 121°14'05.0"E, 168 m (GPS Maki1), 27.vi.2011, night, leaf litter (TR652), coll. T. Robillard (UPLBMNH) [examined]; Allotype female: same information as holotype, TR653 (UPLBMNH) [examined]; Paratypes (5♂): same information as holotype (MNHN) [examined].

**Other material examined. Philippines.** [Luzon]: Laguna: College, 50 m, 1♂ (JBB318), 20.ii.1958, coll. E.S. Novero (UPLBMNH ORT-01161); UPLB, Mt. Makiling, 1♀ (JBB106), 06.viii.2014, coll. J.B. Baroga (UPLBMNH); Los Baños, 300 m, 1♀ (JBB349), 21.iv.1960, coll. A. Djamin (UPLBMNH ORT-01192); [Quezon Province], Mt. Banahaw, 1♂ (JBB297), 2.vii.1994, coll. O. Reyes (UPLBMNH ORT-01140); same information as holotype, 6♂, lab colony, call recording (F0-male1, F0-male1-3, F1-male1-2, F5-male1) (MNHN).

**Type locality.** Philippines. Luzon: Laguna, Los Baños, Mount Makiling, base, secondary forest on campus. **Distribution.** Philippines: Laguna: Mt. Makiling and Los Baños; Quezon: Mt. Banahaw (**new record**). **Diagnosis.** This species differs from *L. sanchezi* by its whitish face, a fastigium that is not orange apically, without clear longitudinal bands in the vertex (Robillard *et al.*, 2013), and male genitalia with long and rounded pseudepiphallidic lophi and C-shaped pseudepiphallidic parameres.

**Calling song.** The song of *L. puyos* consists of long trills (duration =  $3.1 \pm 0.8$  s [ $1.7-4.0$  s]; period =  $25.6 \pm 2.8$  s [ $22.4-33.1$  s]) made up of more than 200 syllables of increasing intensity (Figs. 7A–C). Syllable duration =  $12.6 \pm 1.2$  ms (10–15 ms). The spectrogram analysis reveals that the frequency spectrum is completely ultrasonic. The syllables show a clear dominant peak at  $23.12 \pm 1.06$  kHz typically corresponding to the first peak of a harmonic series with an intermediary peak at ca. 25 to 30 kHz (Figs. 7D, 7E).

**Habitat.** The species is found in secondary habitats in the type locality, i.e., foot of Mt. Makiling; specimens were found in leaf litter and on top of leaves of small plants (Fig. 6A).

### ***Lebinthus luae* Robillard & Tan, 2013**

(Fig. 1)

*Lebinthus luae* Robillard & Tan, 2013: 705 (original description); Tan, 2013: 298 (record in mangroves in Singapore); Tan & Robillard, 2014: 375 (key to Eneopterinae species in Singapore); ter Hofstede *et al.*, 2015: 2 (communication system); Baroga *et al.*, 2016: 94 (taxonomic key); Tan, 2017: 4; Fung *et al.*, 2018: 44 (major prey of common palm civet).

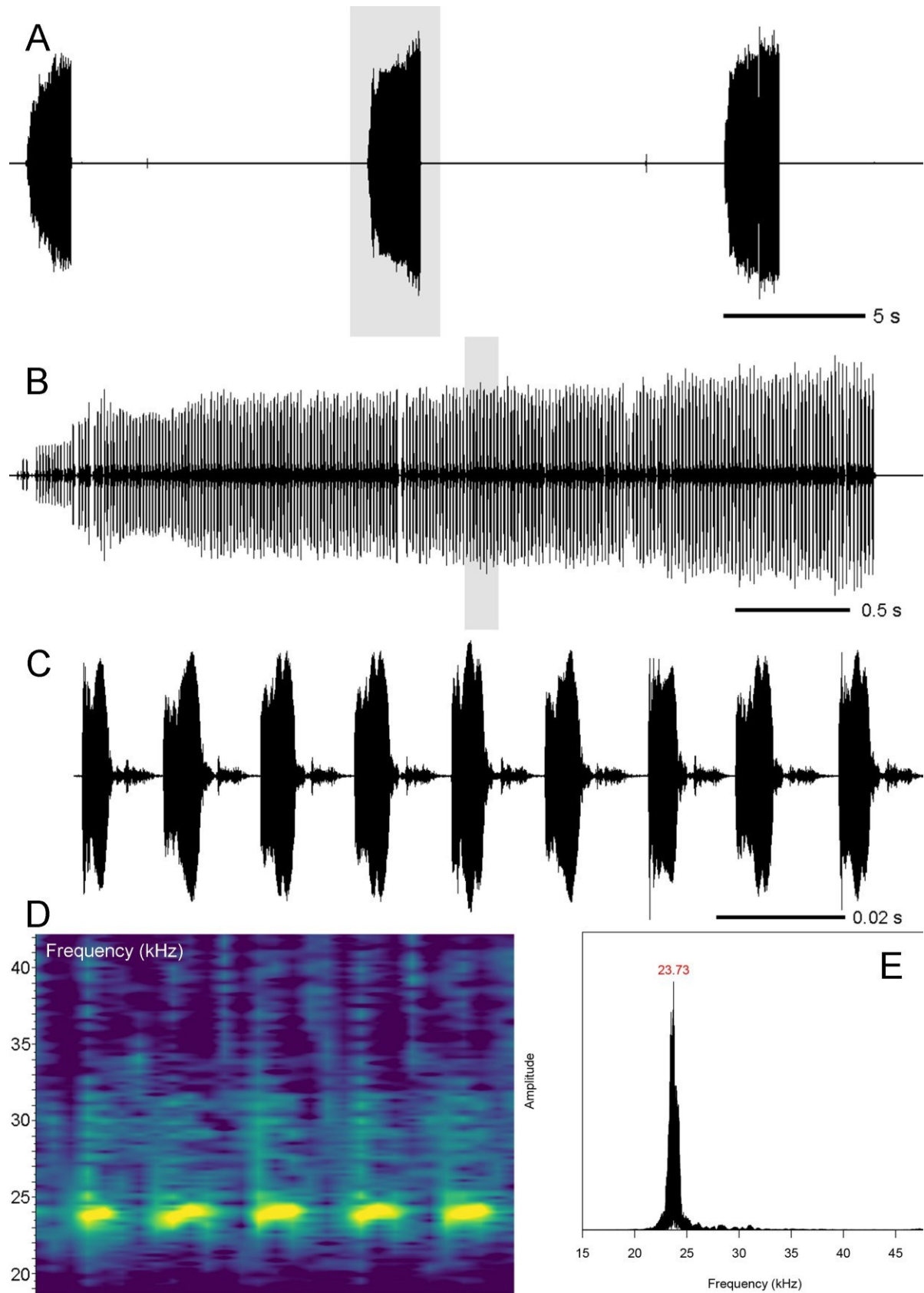
*Lebinthus* sp.: Tan, 2010: 246; Tan, 2012: 4; Tan & Wang, 2012: 315; Tan *et al.*, 2012: 66; Robillard *et al.*, 2013: 2003 (sound generation system).

**Type material.** Holotype male. **Singapore.** Labrador park, forêt secondaire littorale [coastal secondary forest], 01°15'59"N, 103°48'8.1"E, 57 m, day, leaf litter (ZRC), (GPS Lab1), (TR6), 12.vi.2011, coll. T. Robillard [examined]. Allotype female. **Singapore:** Pulau Ubin Island, Jalan Endut Senin, 01°24'19.3"N, 103°57'58.7"E, 0 m, day, leaf litter (ZRC), (TR42bis), 30.vi.2009, coll. T. Robillard [examined].





FIGURE 6. *Lebinthus puyos* nymph in their natural environment in Laguna (A) and male adult in captivity (B).



**FIGURE 7.** Calling song of *Lebinthus puyos*: oscillogram of 3 echemes (A), detailed oscillogram of 1 echeme (B), oscillogram (C) and spectrogram (D) of a section of 1 echeme, and power spectrum (E).



**Other material examined.** Palau. Koror, 1♀ (JBB412), 20.vii.1946, coll. Oakley (BPBM); 3♂ (JBB413–415), 15–25.iii.1948, coll. K.L. Maehler (BPBM); **Philippines.** [Luzon]: [Laguna], MBG [Makiling Botanic Garden], 1♀ (JBB298), i.1980 (UPLBMNH ORT-01141); Quezon Province: Polillo Is., Pinaglubayan, 1♀ (JBB034), 4–6.vi.2014, coll. J.B. Baroga, F. Signabon, & S.A. Yap (UPLBMNH); Atimonan: 1♀, juvenile (JBB229), 31.i.2009, coll. C.P.F. Garcia (IWEPTaxo Lab-03005); 1♂ (JBB207), 01.ii.2009, coll. J.M. Encarnacion (IWEPTaxo Lab-03006), left fore leg for molecular analysis (L140); Quezon Nat'l Park: 1♂, 1♀ (JBB290, JBB299), 11.ix.1976, coll. V.P.G (UPLBMNH ORT-01133, 01142); Pinagbanderahan, 1♀ (JBB328), 29.viii.1984, coll. V.P.G (UPLBMNH ORT-01171); Palawan: Ursula, off E., 1♂ (JBB409), 5.iii.1957, coll. Yoshio Kondo (BPBM); [Visayas]: Leyte, Maasin, 50 m, 1♀ (JBB300), 10.v.1952, coll. C.R. Baltazar (UPLBMNH ORT-01143); Leyte, Leyte-Leyte, 22.vi.2012, coll. T. Robillard; Biliran Islands, North Maripipi Island, iii.2013, 3♂, coll. T. Robillard; Leyte, Dulag, zone ouverte en bord de route [open area near road], 10°57'22"N 125°01'47.7"E (1 m), 26.vi.2012, 1 juvenile, coll. T. Robillard (MNHN); South Leyte, prox. Kuting Reef, 10°2'22.7"N 124°58'58.11"E, 10 m, zone herbacée en bord de route [herbaceous area near road], viii.2013, 2♀ (MNHN), 2♂ (MNHN), 1♂ (MNHN), call recording, 1 juvenile (MNHN), day, coll. T. Robillard, [Mindanao]: Sulu, Tawi-Tawi Grp, Bongao Is., 1♀ (JBB417), 29.viii.1958, coll. H.E. Milliron (BPBM); Cebu: Moalboal, Blue Orchid Resort, 9.993583 N 123.3731 E, 24.vii.2014, 1 juvenile (TR2), molecular sample L69, coll. T. Robillard (MNHN-EO-ENSIF1543); [Mindanao]: [Sulu] Tapul, 1♂ (JBB416), 27.iii.1957, coll. Yoshio Kondo (BPBM).

**Type locality.** Singapore. Labrador park, forêt secondaire littorale [coastal secondary forest]

**Distribution.** Singapore: Labrador Park. Indonesia: Durian Is.; Java; Sumatra. Palau: Koror (**new country record**). Philippines: Laguna: MBG (**new locality record**); Quezon Province: Atimonan, Quezon National Park (**new locality record**), Pinaglubayan, Polillo (**new locality record**); Palawan: Ursula off (**new locality record**); Leyte: Biliran Island, Maasin (**new locality record**); Cebu, Moalboal (**new locality record**); Tawi-Tawi (**new locality record**); Sulu, Tapul (**new locality record**).

**Diagnosis.** This species differs from *L. bitaeniatatus* by the yellow longitudinal band along the whole body being wider and without a ventral black lining and by male genitalia wider and shorter and without M-shaped sclerotization in the ectophallic fold (present in *L. bitaeniatatus*) (Robillard & Tan, 2013). This species also differs from *L. boracay* **sp. nov.** by longitudinal lateral yellowish bands on tergites usually more distinct; black facial band between scapes thicker, broader than the antennal fossa; and pseudepiphallid parameres of male genitalia with inner lobe more triangular with more acute apex.

**Habitat.** The species is mostly found in secondary forests, some on river sides, and some on roadside or coastal areas (Robillard *et al.*, 2015). The species can be easily found resting above leaf litter and leaves. This species is active both in the day and at night but mainly sings during daytime.

### ***Lebinthus estrellae* Robillard, 2015**

(Fig. 1)

*Lebinthus estrellae* Robillard, 2015, in Robillard & Yap, 2015: 63 (original description); Baroga *et al.*, 2016: 94 (taxonomic key).

**Type material.** Holotype male. **Philippines.** [Visayas] Leyte: Burauen, Barangay Villa Corazon, forêt secondaire sur pente [secondary forest on slope] (GPS Bar2), 10°57'52.1"N 124°46'39.8"E, 345 m, (TR29), iii.2013, coll. T. Robillard (UPLBMNH) [examined]. Paratypes (2♂, 15♀): same information as holotype (MNHN) [examined].

**Type locality.** Leyte: Philippines. Burauen, Barangay Villa Corazon, secondary forest on slope

**Distribution.** Philippines: Leyte, Burauen

**Diagnosis.** This species can be recognized from other species of the *sanchezi* group by its dark brown coloration, short rounded lophi in male genitalia, presence of vertical whitish bands below eyes, clypeus black with yellow edge; male genitalia with short rounded lophi, and very short female FWs (reaching posterior margin of first tergite).

**Habitat.** Found in bushes and leaf litter.

***Lebinthus polillensis* Baroga, Yap & Robillard, 2016**

(Fig. 1)

*Lebinthus polillensis* Baroga *et al.*, 2016: 93 (original description & taxonomic key).

**Type material.** Holotype male. **Philippines.** Luzon: Quezon Province, Polillo Island, Barangay Pinaglubayan, secondary forest, night, rainy, leaf litter (JBB036), 4–6.vi.2014, coll. J.B. Baroga, S.A. Yap & F. Signabon (UPLBMNH ORT-01096) [examined].

**Other material examined.** **Philippines.** [Luzon]: Ifugao Province, Bunhian, Jacmal, 24 km E Mayoyao, 800–1000 m, 1♀ (JBB445), 4–6.v.1967, 1♀ juvenile (JBB446), 16–18.iv.1967, 1♀ (JBB447), 22–24.iv.1967, coll. H.M. Torevillas (BPBM); Camarines Sur, Mt. Iriga, rec: 500–600 m, 1♀, 9.IV.[19]62, H.M. Torreallas (BPBM); 500–600 m, 1♀, 17.IV.[19]62 (BPBM); 500–600 m, 1♂, 13.IV.[19]62 (BPBM); 500 m, 1♂, 25.III.[19]62 (MNHN); [Visayas]: Negros Or. [Oriental], L. Balinsasayao, 1♀ (JBB444), 1–7.x.1959, coll. C.M. Yoshimoto (BPBM).

**Type locality.** **Philippines.** Luzon: Quezon Province, Polillo Island, Barangay Pinaglubayan, secondary forest.

**Distribution.** **Philippines:** Ifugao Province, Bunhian (**new locality record**); Polillo Island, Pinaglubayan; Camarines Sur, Mt. Iriga (**new locality record**); Negros Oriental, Balinsasayao (**new locality record**).

**Diagnosis.** This species is close to *L. puyos* and *L. sanchezi*, from which it differs by some features in head and male genitalia, and female FWs slightly overlapping.

**Habitat.** The type material was found hiding underneath the leaf litter, usually in moist area, low elevation (500–600 m) of a secondary forest.

***Lebinthus dannybaletei* Baroga-Barbecho & Robillard sp. nov.**

(Figs. 1, 8, 9, 20A, 21A, 22A, 23A)

**Type material.** Holotype male. **Philippines.** [Visayas]: [Panay Island], [Antique] Sibalom National Park, Mt. Porras, 11.x.2015 (JBB154), coll. N.M. Barbecho & M.D.M. Asio (PNM 13589). Allotype female. Same locality as holotype, NC [night collection] along T1 [Transect 1], 18.x.2015 (JBB151), coll. N.M. Barbecho, M.D.M. Asio & A.C. Diesmos (PNM 13586). Paratypes (4♂, 11♀): same locality as holotype, 1♀ (JBB155) (PNM 13590) (MNHN-EO-ENSIF10754); 3♀ (JBB156–158) (PNM 13591–13593), 1♀ (JBB152), 13.x.2015, coll. N.M. Barbecho & M.D.M. Asio (PNM 13587); 1♂ (JBB159) (PNM 13594), 17.x.2015, coll. N.M. Barbecho (MNHN-EO-ENSIF11061); 1♀ (JBB160), 17.x.2015, coll. N.M. Barbecho (PNM 13595); NC along T1: 1♀ (JBB145), 15.x.2015, coll. N.M.

Barbecho (PNM 13580); 1♂ (JBB146) (PNM 13581), 18.x.2015, coll. N.M. Barbecho, left mid leg for molecular analysis (L139); 1♂ (JBB147) (PNM 13582), 18.x.2015, coll. N.M. Barbecho (MNHN-EO-ENSIF10752); 2♀ (JBB149–150), 18.x.2015, coll. N.M. Barbecho (PNM 13584–13585); 1♀ (JBB148) (PNM 13583) (MNHN-EO-ENSIF10753), 18.x.2015, coll. N.M. Barbecho.

**Additional material.** **Philippines.** Same locality as holotype, 1♂ juvenile (JBB153), 13.x.2015, coll. N.M. Barbecho & M.D.M. Asio (PNM 13588).

**Type locality.** **Philippines.** Visayas: [Panay Island], [Antique] Sibalom National Park, Mt. Porras

**Distribution.** **Philippines:** Panay Island, Antique, Sibalom, Mt. Porras.

**Etymology.** The name of the species is dedicated to the late Mr. Danilo “Danny” S. Balete, a well-known Filipino Mammalogist and conservationist, for his contribution to science and Philippine conservation. He was the mentor of JBB in the mentoring program of the Biodiversity Conservation Society of the Philippines during its Annual Scientific Conference in 2010.

**Diagnosis.** The species differs from congeners by its general coloration dark brown, including face and head vertex. Male genitalia close to that of *L. puyos*, from which they differ by pseudepiphallus thinner and slightly longer, and from pseudepiphallic parameres with inverted L-shaped (C-shaped in *L. puyos*).

A



B



C



D

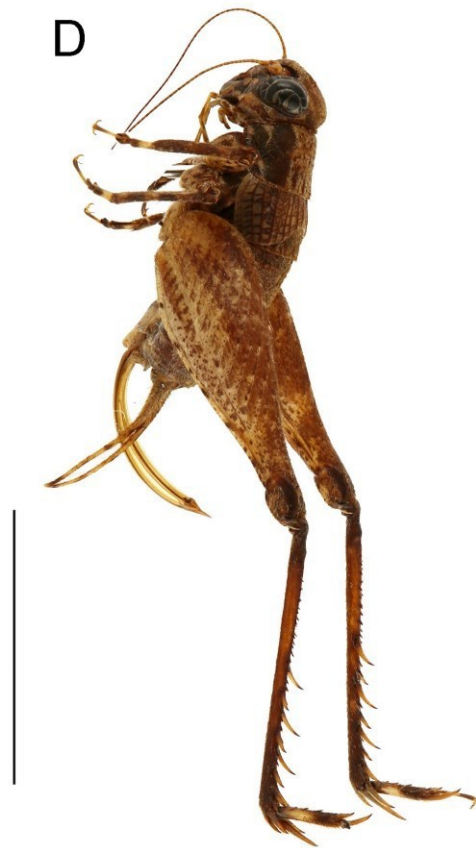
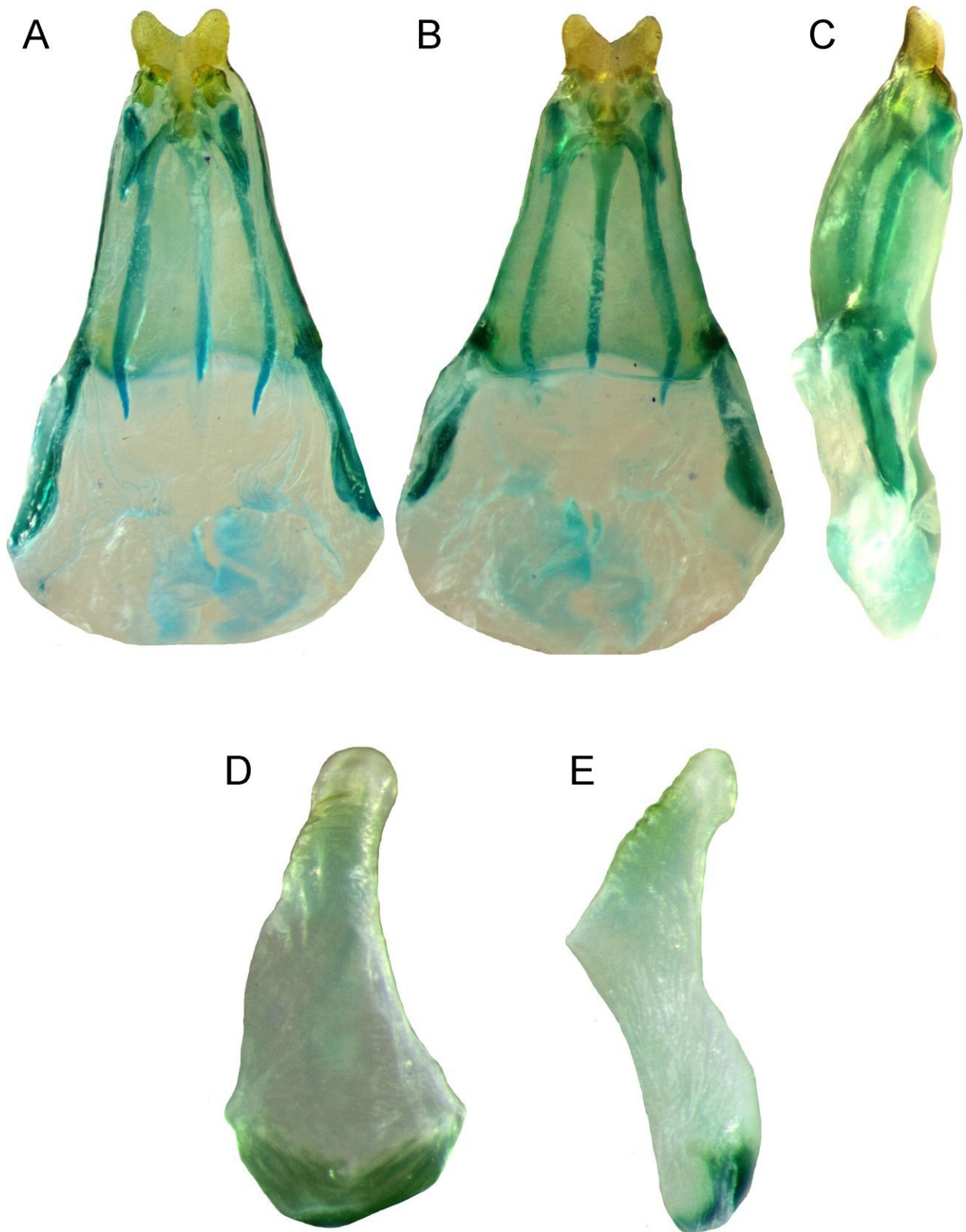


FIGURE 8. *Lebinthus dannybaletei* sp. nov. habitus of male (A, B) and female (C, D) in dorsal (A, C) and lateral (B, D) views. Scale bars: 5 mm.





**FIGURE 9.** *Lebinthus dannybaletai* sp. nov. male genitalia in dorsal (A), ventral (B), and lateral (C) views, and female copulatory papilla in dorsal (D) and lateral views (E).

**Description.** Size average for the genus (Fig. 8; Table 1). Coloration yellow brown and dark brown. Head dorsum (Fig. 20A) dark brown, region posterior to eyes and vertex black, with 2–3 thick yellow bands, not distinct.

Fastigium darker than vertex, wider than long, setose golden brown, with a thin yellow band apically; upper facial part dark brown, with black markings. Scapes brown, antennae brown basally, then progressively darker. Face and mouthparts (except labium) dark brown, covered with black markings. Maxillary palpi and labium brown. Lateral part of head yellow with a brown area (Fig. 21A). Dorsal disk of pronotum with anterior lateral edge brown, posterior golden brown. Lateral lobes of pronotum dark brown (Fig. 21A), with thin brown patterns near ventral margin; ventral edge black. Fore and median legs brownish; femora with dark brown spots; tibia with dark rings. Hind femora brown, with strong striated dark brown patterns on outer face; knees black; hind tibia dark brown without dark or faint rings. Hind tarsomeres with 3–4 spines on dorsal outer edge and 0–1 on outer faces (n=6). Abdomen brown, with small black spots dorsally, lighter ventrally. Cerci brown, with dark rings near apex. **Male.** FWs (Fig. 22A) not reaching abdomen mid-length. Cells brown, not translucent, veins dark brown. Lat- eral field with yellow longitudinal veins and faint black transverse veins. 1A curved, without a clear angle; CuP not visible. Diagonal vein clearly visible on anterior half, faint posteriorly. Harp wide, with a strong semi-circular vein, polyfurcated anteriorly, and delimiting rounded false mirror, with curved area of CuA. CuA curved on inner side, near apex, its distal part weak, posterior to curved area surrounding the median fold, small and located on abdo- men dorsum. Posterior part of diagonal vein visible. Longitudinal veins very strong. Mirror (d1) not differentiated. Apical field very short. Lateral field with 6 strong longitudinal veins, R vein underlined with thin black linings.

Subgenital plate elongate, clog shaped.

**Male genitalia** (Figs. 9A–C). Close to *L. puyos*. Pseudepiphallic sclerite elongate (slightly longer but thinner than *L. puyos*), convex dorsally, trapezoidal shaped, narrowed posteriorly, with short individualized lophi, separated by a V-shaped indentation; anterior margin of pseudepiphallic sclerite slightly bisinuated, its lateral margins slightly curved and raised dorsally. Rami short, straight, not diverging apically. Pseudepiphallic parameres inverted L-shaped (C-shaped in *L. puyos*), their anterior lobe rectangular and slightly curved, posterior ones elongate. Ectophallic arc wide, complete, deeply curved posteriorly, its base with long ventro-posterior expansions well sclerotized. Ecto- phallic fold membranous, with a rounded preapical sclerite and two short antero-lateral sclerotizations. Ectophallic apodemes very long, almost parallel. Endophallic sclerite very long, more or less straight, exceeding anterior margin of pseudepiphallic, its posterior apex with a small median expansion and short lateral arms; endophallic apodeme made of lateral lamella, without median crest.

**Female.** FWs (Fig. 23A) rather short, not reaching posterior margin of second tergite, slightly overlapping basally. Veins dark brown, not translucent, darker than cells. Dorsal field with five strong dark brown longitudinal veins. Lateral field darker, with four strong dark brown longitudinal veins. Ovipositor shorter than hind femora; apex of ovipositor lanceolate, denticulate on dorsal edge. Copulatory papilla (Figs. 9D, 9E) small, slightly conical and narrow dorso-ventrally, with wide, V-shaped basal sclerotized ring; apex rounded and slightly enlarged, with some corrugations on its lateral margins.

**Measurements (in mm).** See Table 1.

**Habitat.** The type material was found in secondary forested areas where vegetation ranges from average to high, some in grasslands and leaf litter. Most of the specimens were collected during night.

**TABLE 1.** Measurements of *Lebinthus dannybaletai* sp. nov.

	PronL	PronW	FWL	FWW	HWT	FIIL	FIIW	TIIL
Male paratypes (n=3)	2.1–2.7	4.1–4.7	4.0–4.2	3.3–3.5	-	8.4–12.2	2.8–3.8	6.2–10.3
Female paratypes (n=3)	2.5–2.6	4.3–4.7	1.9–2.4	2.3–2.7	-	12.4–13.1	4.2–4.5	10.2–10.9
	TIIIs				TallIs			OL
	las	lbs	Oas	Obs	Int	Ext/dors	Ext/lat	
Male paratypes (n=3)	7–8	5–6	10–13	3–6	0	3–4	0–1	-
Female paratypes (n=3)	8–9	4–5	10–11	4–7	0	3–4	0–1	10.2–10.9

***Lebinthus parvus* Baroga-Barbecho & Robillard sp. nov.**  
(Figs. 1, 10, 11, 20B, 21B, 22B, 23B)

**Type materials.** Holotype male. **Philippines.** [Mindanao]: Misamis Or. [Oriental], Mt. Balatukan, 15 km SW of

Gingoog, 1000–2000 m, 1–5.v.1960 (JBB432), coll. H. Torrevillas (BPBM). Allotype female. Same information as holotype (JBB431) (BPBM). Paratypes: [Mindanao]: Bukidnon, Mt. Katanglad [Kitanglad], 1480 m, 27–31.x.1959, coll. L. Quate & C. Yoshimoto, 1♂ (JBB429) (MNHN-EO-ENSIF10749); [Mindanao]: Agusan, San Francisco, 10 km SE, 17.xi.1959, 1♀ (JBB441), coll. C.M. Yoshimoto (MNHN-EO-ENSIF10866).

**Additional material examined. Philippines.** [Mindanao]: Bukidnon, Mt. Katanglad [Kitanglad], 1480 m, 27–31.x.1959, coll. L. Quate & C. Yoshimoto, 1♀ juvenile (JBB430) (BPBM).

**Type locality. Philippines.** Mindanao: Misamis Or. [Oriental], Mt. Balatukan, 15 km SW of Gingoog, 1000–2000 m.

**Distribution.** Philippines: Misamis Oriental, Mt. Balatukan; Bukidnon, Mt. Katanglad; Agusan, San Francisco.

**Etymology.** The name comes from the Latin word “*parvus*” which means “small” referring to the size of the species, which is the smallest *Lebinthus* among Mindanao species.

**Diagnosis.** The species is characterized by its general shape and small size, face almost black except the posterior part yellow and yellow marking crossing clypeus and labrum. Pseudepiphallus of male genitalia close to that of *L. puyos*, from which it differs by triangular shape and pseudepiphallallic parameres F-shaped more similar to that of *L. sanchezi*.

**Description.** Species size average for the genus (Fig. 10). Coloration brown to dark brown. Head dorsum (Fig. 20B) dark brown, with four longitudinal bands; region posterior to eyes and vertex yellow. Fastigium dark brown, wider than long, covered with golden brown setae. Scapes and antennae brown. Face black except posterior part, yellow, with a yellow band crossing from clypeus to labrum; region between antennae with yellow markings. Maxillary palpi brown. Lateral face (Fig. 21B) with a yellow band running from vertex to labrum; region posterior to eyes dark brown. Dorsal disk of pronotum straight posteriorly. Lateral lobes black dorsally, ventral margin yellow or brown, with a median dark brown to black patch, sometimes linked to anterior margin or to dorsal dark coloration. Fore and median legs brown, sometimes mottled with dark brown. Hind femora brown, with some dark brown patches on lateral edges of its inner face. Hind tibia shorter than femora, brown to dark brown, with light to faint rings. Hind tarsomeres with 3–4 spines on dorsal outer edge ( $n=3$ ) and 0–1 on outer faces ( $n=3$ ). Abdomen dark brown. Cerci brown, tapering, slightly pointed apically, with some dark brown spots.

**Male.** FWs (Fig. 22B) close to that of *L. estrellae*, not reaching abdomen mid-length. Cells and veins golden brown to dark brown, apex of longitudinal band orange brown to golden brown, M and R orange brown, area in between yellowish, without transverse veins. Sc orange brown, area between R and Sc dark brown; rest of lateral field dark brown, lighter toward ventral margin, with dark brown longitudinal veins. 1A curved ( $<100^\circ$ ). Diagonal vein near CuA weak. Harp wide, occupying most of dorsal field surface, with a transverse harp vein, poly-furcated anteriorly, forming a rounded false mirror. CuA curved inwards near apex, connected to false mirror, its basal part weak. Longitudinal veins of dorsal field stronger basally, transverse veins weak. Mirror (d1) not differentiated. Apical field very short, with no bifurcation of CuA posterior to diagonal vein. Lateral field with five strong longitudinal veins including R, Sc, and three more ventral veins; Sc without bifurcating veins. Subgenital plate elongate, clog shaped.

**Male genitalia** (Figs. 11A–C). General shape intermediate between that of *L. puyos* and *L. sanchezi*. Pseudepiphallallic sclerite elongate, convex dorsally, more or less triangular (more rectangular in *L. puyos*), narrowed posteriorly, with short individualized lophi, setose and separated by a wide V-shaped indentation; anterior margin straight, lateral margins slightly curved and raised dorsally. Rami short, prolonging triangular shape of pseudepiphallus. Pseudepiphallallic parameres F-shaped (as in *L. sanchezi*), curved ventrally. Ectophallallic arc complete, deeply curved posteriorly, its base with long ventro-posterior expansions, sclerotized basally. Ectophallallic fold with a wide bilobate preapical sclerite, anterior margin indented, posterior with lateral expansions. Ectophallallic apodemes parallel and very long, exceeding anterior margin of pseudepiphallus. Endophallallic sclerite very long, curved dorsally, exceeding anterior margin of pseudepiphallus, its anterior apex with a small triangular median expansion and short lateral arms; endophallallic apodeme made of lateral lamella, without a median crest.

**Female.** FWs (Fig. 23B) very short, reaching posterior margin of first tergite, not overlapping. Dorsal field brown, with six very strong orange brown longitudinal veins. Lateral edges darker, with two golden brown longitudinal veins, slightly curved apically. Ovipositor slightly shorter than hind femora; its apex denticulate on dorsal edge. Copulatory papilla (Figs. 11D, 11E) cylindrical, little sclerotized, narrowing apically, its base wide and sclerotized, median area indented; apex elongate, round and enlarged anteriorly.

---

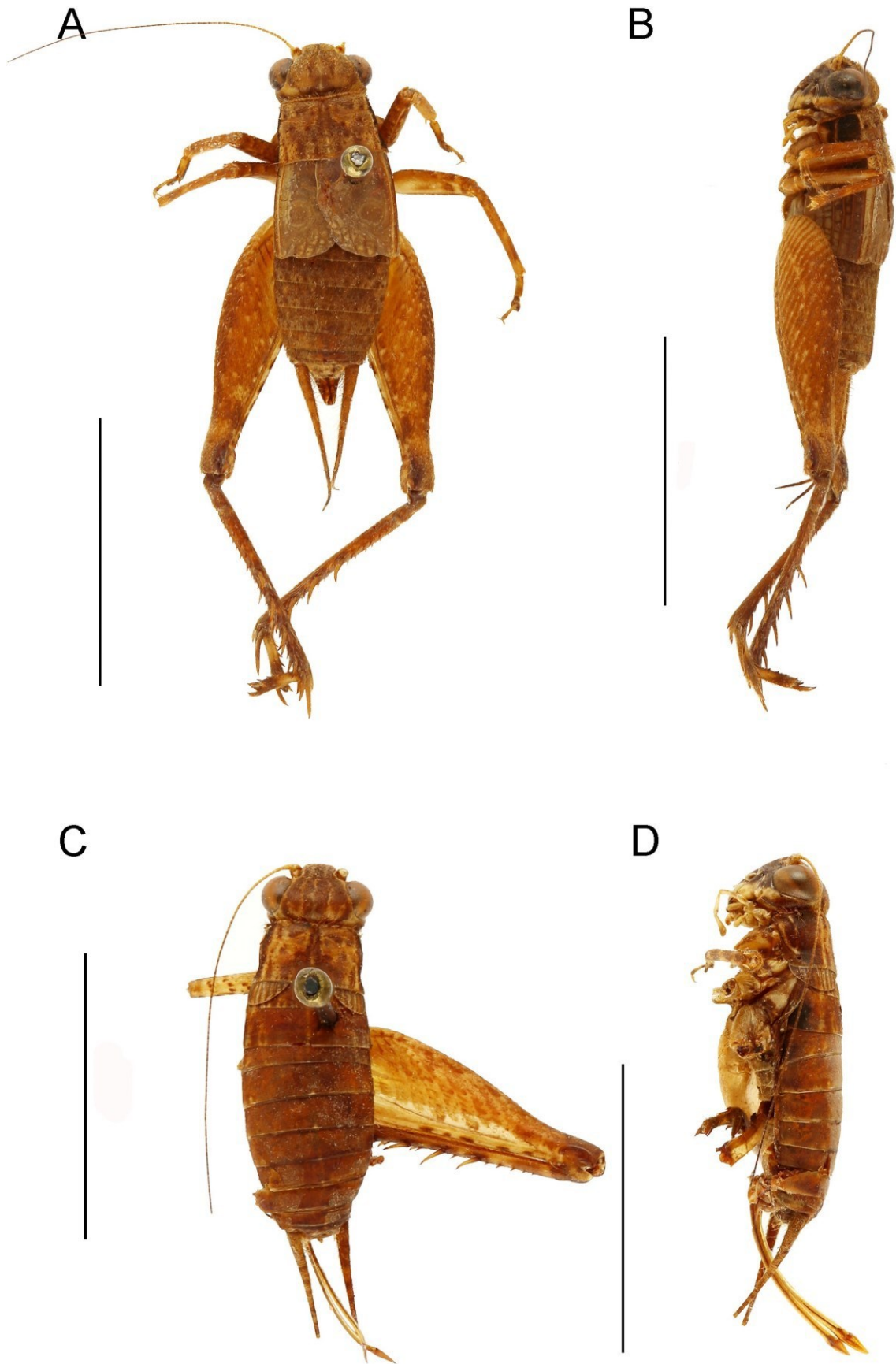
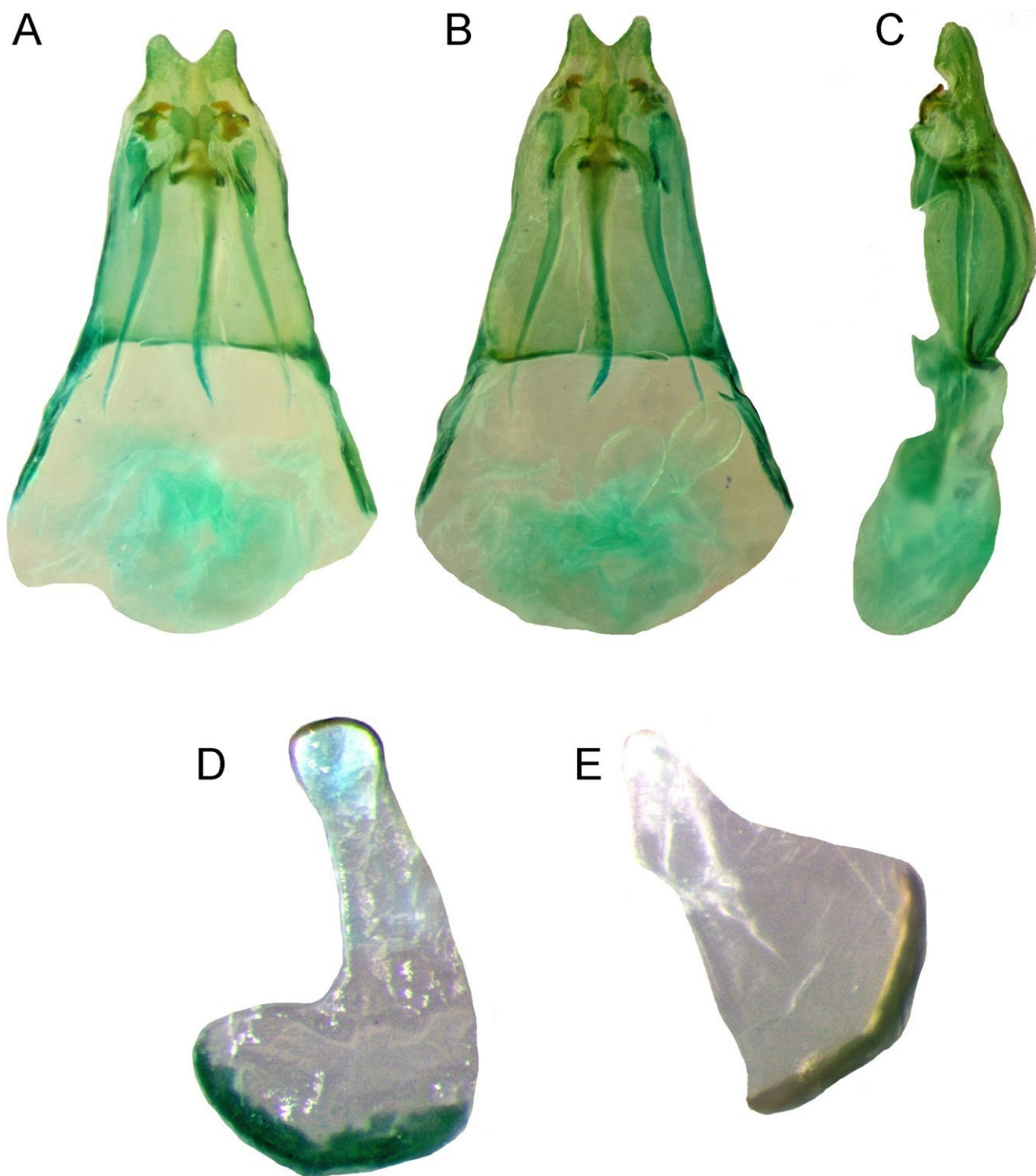


FIGURE 10. *Lebinthus parvus* sp. nov. habitus of male (A, B) and female (C, D) in dorsal (A, C) and lateral (B, D) views. Scale bars: 5 mm.





**FIGURE 11.** *Lebinthus parvus* sp. nov. male genitalia in dorsal (A), ventral (B), and lateral (C) views, and female copulatory papilla in dorsal (D) and lateral views (E).

**Measurements (in mm).** See Table 2.

**Habitat.** Based on the information on the labels, the species is found in secondary forested areas in low to average elevation.

**Remarks.** The type material is from museum collections and was found in different locations in Mindanao. Close examination confirmed that the three known specimens belong to the same species based on the characters of the face and vertex, lateral lobes of pronotum, and wing patterns. The male specimen from Bukidnon only varies



from the holotype by slight differences in genitalia—translucent ectophallic fold and slightly longer lophi, which is probably because the specimen had recently molted.

**TABLE 2.** Measurements of *Lebinthus parvus* sp. nov.

	PronL	PronW	FWL	FWW	HWT	FIIL	FIIW	TIIL
Male holotype	2.5	4.1	4.2	3.4	-	10.5	3.1	9.2
Female allotype	2.3	4.3	1.1	1.6	-	10.5	3.2	6.5
Male paratype (n=1)	1.9	3.5	3.3	2.8	-	8.0	3.1	6.9
	Tills				Talls			OL
	las	lbs	Oas	Obs	Int	Ext/dors	Ext/lat	
Male holotype	5	4	9	4	0	4	0	-
Female allotype	5	4	8	5	0	3	1	7.8
Male paratype (n=1)	5	5	9	5	0	4	1	-

***Lebinthus palaceus* Baroga-Barbecho & Robillard sp. nov.**

(Figs. 1, 12, 13, 20C, 21C, 22C, 23C)

**Type materials.** Holotype male. **Philippines.** [Mindanao]: Misamis Or. [Oriental], Mt. Empagatao, 1050–1200 m, 19–30.iv.1961 (JBB435), coll. H. Torrevillas (BPBM). Allotype female (JBB436), same information as holotype, molecular sample L170 (BPBM). Paratype: 1♀ (JBB437) (BPBM) (MNHN-EO-ENSIF10865), same information as holotype.

**Type locality.** **Philippines.** Mindanao: Misamis Or. [Oriental], Mt. Empagatao, 1050–1200 m

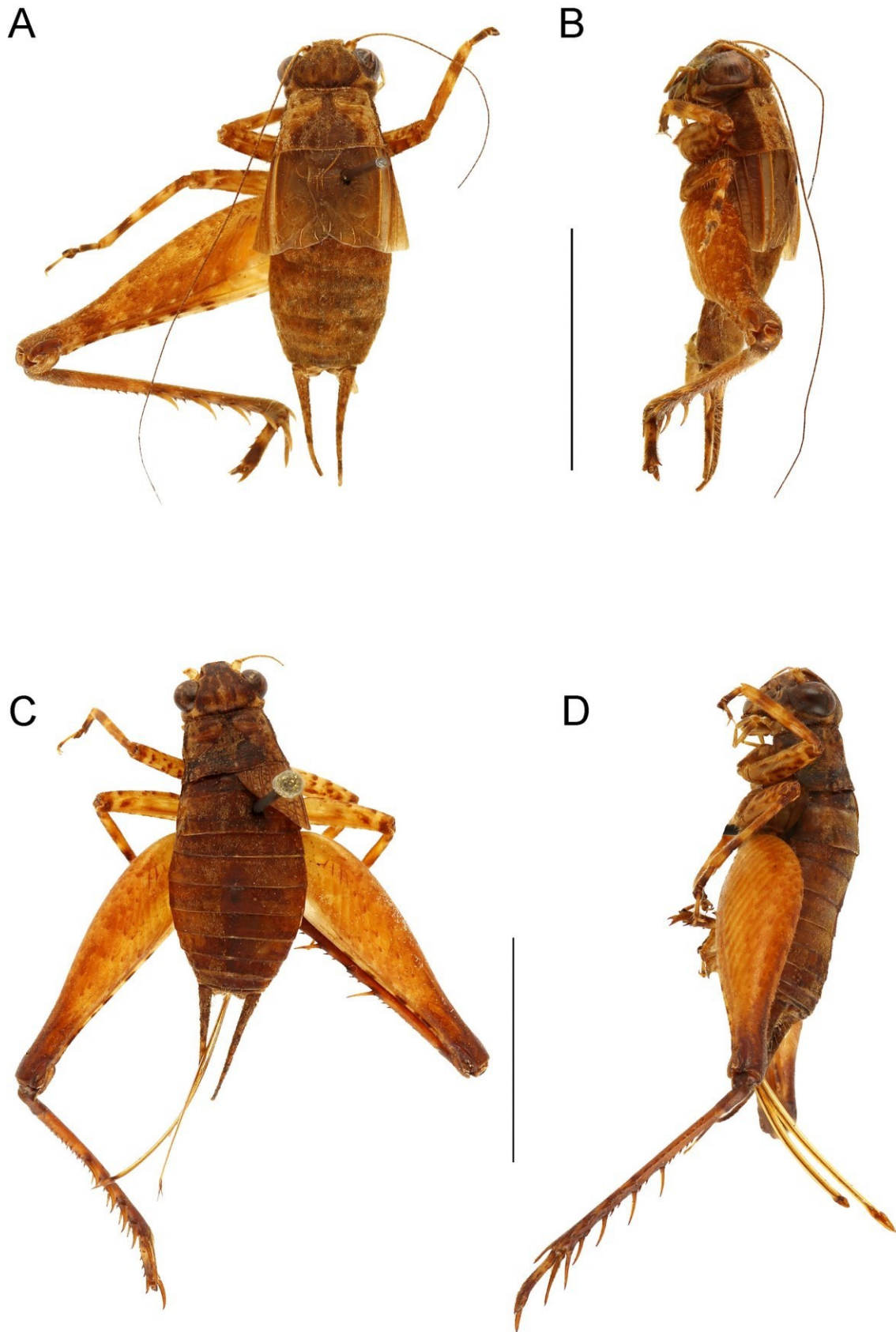
**Distribution.** Philippines. Misamis Oriental, Mt. Empagatao.

**Etymology.** The name *palaceus* is an adjective which means “spade-shaped”, referring to the shape of the pseudepiphallic paramere of the male genitalia.

**Diagnosis.** The species can be recognized by its large size, black face with yellow markings below and between antennae, and by male genitalia with spade-shaped pseudepiphallic parameres and X-shaped preapical sclerites in ectophallic fold.

**Description.** Species large for the genus (Fig. 12, Table 3). Head dorsum (Fig. 20C) dark brown, with four longitudinal bands, little distinct; region posterior to eyes yellow. Fastigium dark brown to black, wider than long, with long golden setae. Scapes yellow, antennae brown, darker apically. Face including clypeus and labrum black, except posterior part, yellow to brown, with some yellow markings between and below antennae. Fronto-clypeal suture white. Mouthparts including maxillary palpi yellow to brown. Lateral face (Fig. 21C) yellowish to brownish, area posterior to eyes with a dark brown band. Dorsal disk of pronotum brown, fainter near lateral margins, with a wide median dark brown area along posterior margin. Lateral lobes of pronotum dark brown to black dorsally, ventral margin brown, with a median dark brown to black patch sometimes linked to anterior margin or to dark dorsal coloration. Fore and median legs brownish; femora with dark brown spots, tibiae with thick dark brown rings. Hind femora orange brown, with some dark brown patches on lateral edges of their inner face. Knees dark brown, tibiae and tarsi brown basally, darker apically. Hind tarsomeres with three spines on dorsal outer edge and none on outer face (n=3). Abdomen dark brown, covered with short golden brown setae. Sternites yellow brown. Cerci brown, covered with dark brown to black patches.

**Male.** FWs (Fig. 22C) not reaching abdomen mid-length. Cells yellow brown, not translucent, veins yellow brown. Angle between dorsal and lateral fields forming a whitish band including bases of and distal part of CuA (rest of CuA dark brown), bases of M, CuA/M area, and distal part of M/R area. Lateral field dark brown dorsally, lighter ventrally, with dark brown transverse veins. 1A angle wide. CuP absent. Area posterior to plectrum with a thick sclerotization. Harp wide, occupying most of dorsal field surface, with a strong transverse harp vein, poly-furcated anteriorly, forming a rounded false mirror. CuA curved inwards near apex. Mirror (d1) not differentiated. Apical field very short, with no bifurcation of CuA posterior to diagonal vein. Lateral field with six strong longitudinal veins including R, Sc, and four more ventral veins; Sc without bifurcating veins. Subgenital plate elongate, clog shaped.



**FIGURE 12.** *Lebinthus palaceus* sp. nov. habitus of male (A, B) and female (C, D) in dorsal (A, C) and lateral (B, D) views. Scale bars: 5 mm.

**TABLE 3.** Measurements of *Lebinthus palaceus* sp. nov.

	PronL	PronW	FWL	FWW	HWT	FIIL	FIIW	TIIL
Male holotype	2.4	4.3	4.2	3.7	-	14.1	4.4	13.1
Female allotype	2.7	4.8	3.9	3.3	-	14.8	4.6	11.3
Female paratype (n=1)	2.9	4.9	2.7	2.5	-	14.3	4.7	11.9
	Tills				Talls			OL
	las	lbs	Oas	Obs	Int	Ext/dors	Ext/lat	
Male holotype	9	7	13	6	0	3	0	-
Female allotype	7	5	12	6	0	3	0	14.1
Female paratype (n=1)	8	5	12	5	0	3	0	13.0

**Male genitalia** (Figs. 13A–C). Close to that of *L. sanchezi*. Pseudepiphallic sclerite elongate, slightly trap- ezoidal and convex dorsally; posterior apex with short triangular lophi, wider than long, setose, and separated by a V-shaped indentation; anterior margin straight, lateral margins slightly raised dorsally. Rami very short. Pseude- piphallic parameres spade-shaped, with a broad blade apex and a short, tapered base. Ectophallic arc complete, curved posteriorly, less sclerotized. Ectophallic fold with a longer than wide X-shaped paralleled sclerite, with a short median gap. Ectophallic apodemes very short, not reaching anterior margin of pseudepiphallicus. Endophallic sclerite wide and long, translucent, its posterior apex with small, hook-like lateral expansions. Endophallic apodeme translucent or not visible.

**Female.** FWs (Fig. 23C) longer than pronotum, not overlapping. Dorsal field yellow to brown, with 6–7 strong yellow brown longitudinal veins, with dark transverse veins; posterior margin straight, slightly curved apically. Lateral field darker, with three strong and one weak longitudinal vein, with strong dark transverse veins. Ovipositor slightly shorter than hind femora, apex lanceolate, denticulate on dorsal edge. Copulatory papilla (Figs. 13D, 13E) conical and narrowed dorso-ventrally; base narrowing, triangular, convex dorsally; apex almost as wide as base, with a long lateral sclerotization forming a concave appearance.

**Measurements (in mm).** See Table 3.

**Habitat.** Unknown.

### ***Lebinthus hamus* Baroga-Barbecho & Robillard sp. nov.**

(Figs. 1, 14, 15, 20D, 21D, 22D, 23D)

**Type materials.** Holotype male. **Philippines.** [Luzon]: Palawan, Tarumpitao, light trap, 1.vi.1958 (JBB410), coll.

H.E. Milliron (BPBM). Allotype female. [Luzon]: [Palawan], Balabac, Pasig, 4.iii.1957 (JBB439), coll. Yoshio Kondo (MNHN-EO-ENSIF10750).

**Type locality.** **Philippines.** Luzon: Palawan, Tarumpitao,

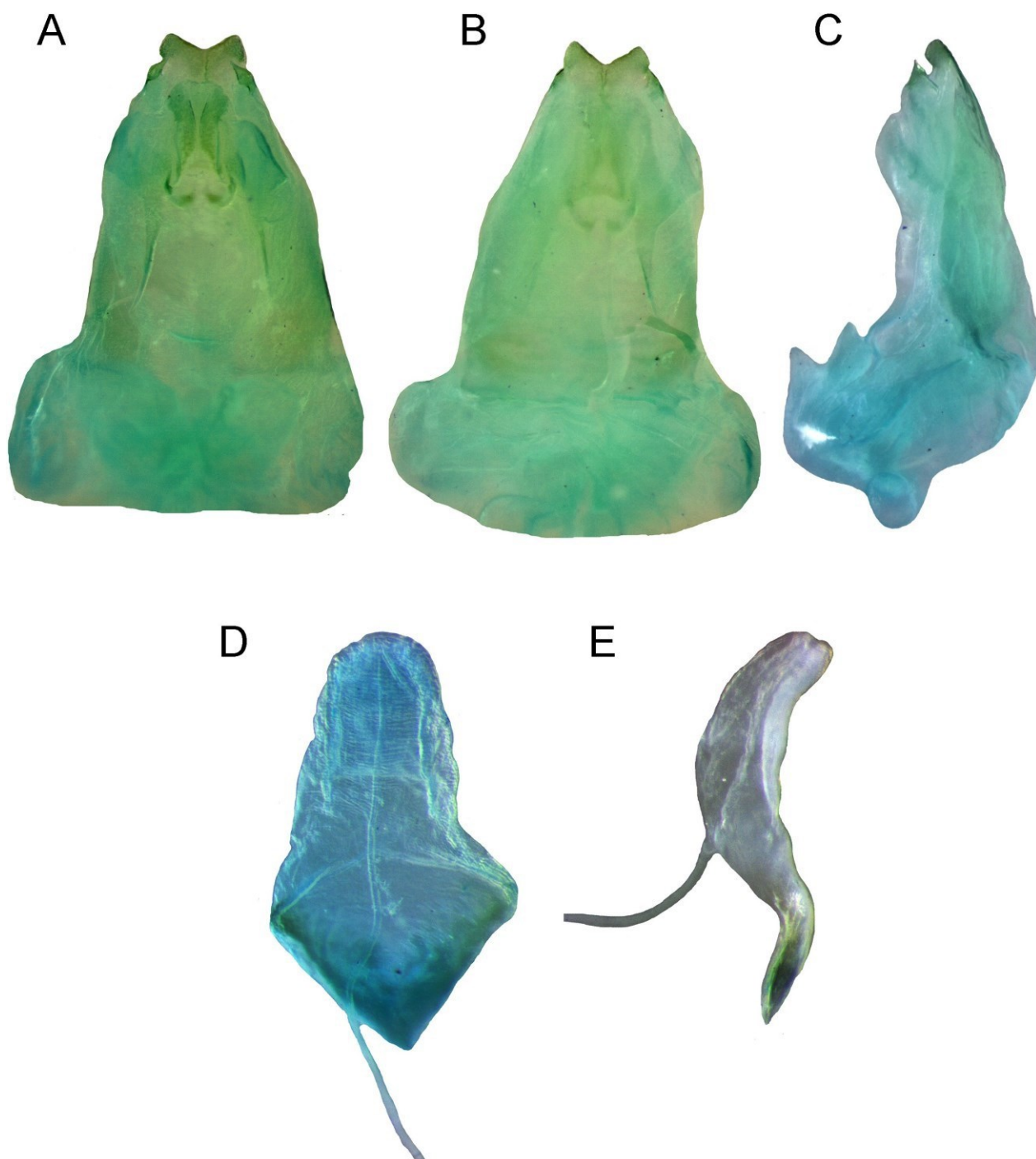
**Distribution.** **Philippines.** Southern Palawan.

**Etymology.** The name comes from a Latin word “hamo” which means “hook” referring to the shape of the pseudepiphallic parameres and sclerites in ectophallic arc of male genitalia.

**Diagnosis.** The species is characterized by its yellowish face, with black bands running in upper part below an- tennae and eyes, resembling a mustache. It is also characterized by male genitalia with hook-shaped pseudepiphallic parameres and hook-like expansions in ectophallic arc.

**Description.** Size average for the genus (Fig. 14, Table 4). Coloration brown. Head dorsum (Fig. 20D) dark brown, with four wide dark brown longitudinal bands; region posterior to eyes yellow. Fastigium dark brown, wider than long, covered with golden brown setae. Scapes yellow, antennae brown. Face yellow with two pairs of black bands, one in upper face below antenna, and another one below eye, extending to gena and mandibles. Mouthparts yellow to brown, with some dark brown markings. Maxillary palpi brown with dark brown patches. Lateral part of head (Fig. 21D) yellow, area posterior to eye with a black band linked to black coloration of pronotum. Dorsal disk of pronotum black medially, yellowish near lateral margins. Lateral lobe of pronotum black dorsally, with a small yellow patch on ventral margin. Fore and median legs brownish; femora with dark brown spots, tibiae with

thick dark brown rings. Hind femora orange brown, with striated dark brown patterns on outer faces. Knees dark brown, tibiae with dark rings, darker and almost merged apically. Hind tarsomeres with three spines on dorsal outer edge and 0–1 on outer faces (n=2). Abdomen orange brown covered with short golden setae. Cerci brown with dark brown rings.



**FIGURE 13.** *Lebinthus palaceus* sp. nov. male genitalia in dorsal (A), ventral (B), and lateral (C) views, and female copulatory papilla in dorsal (D) and lateral views (E).



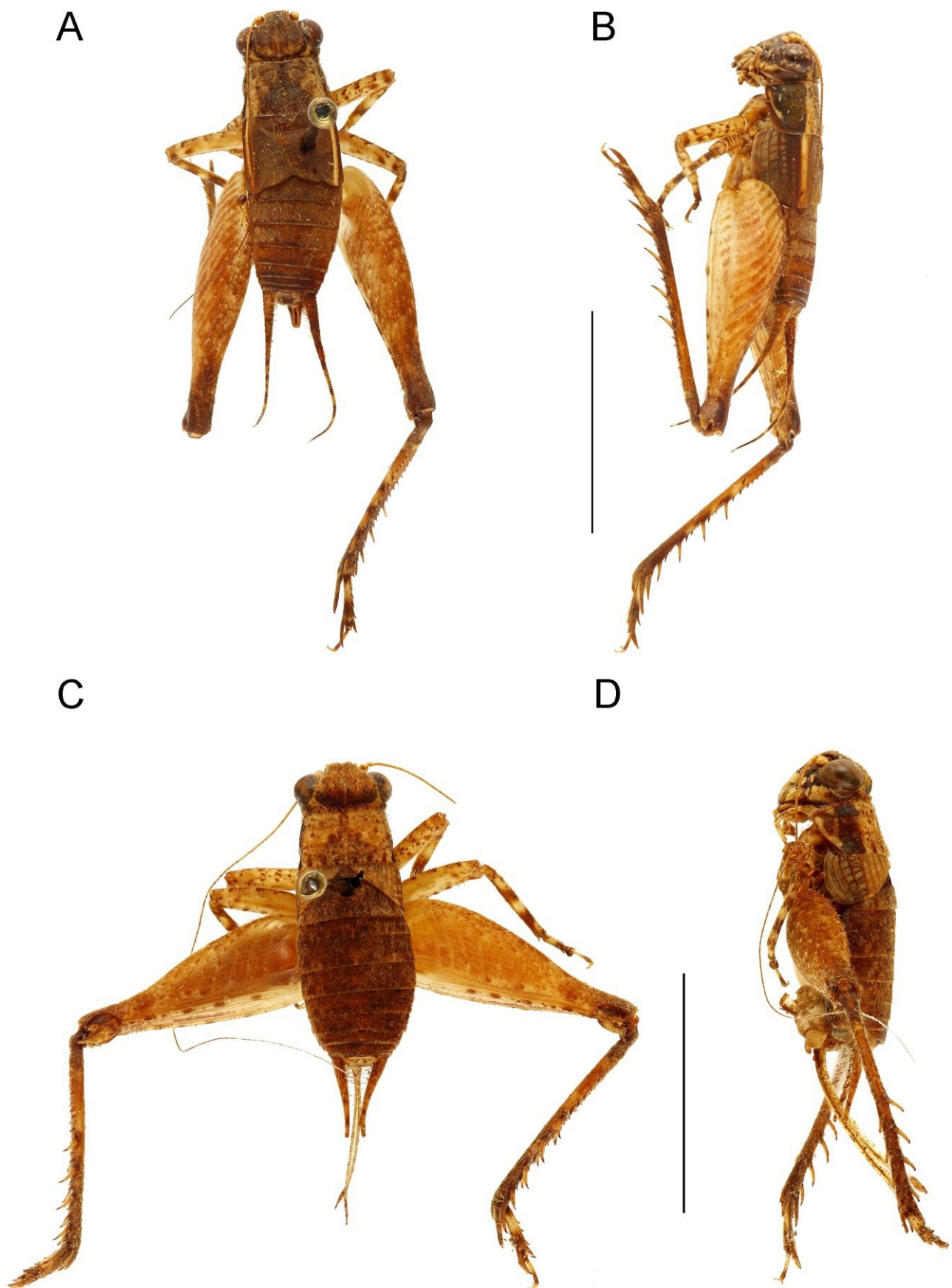
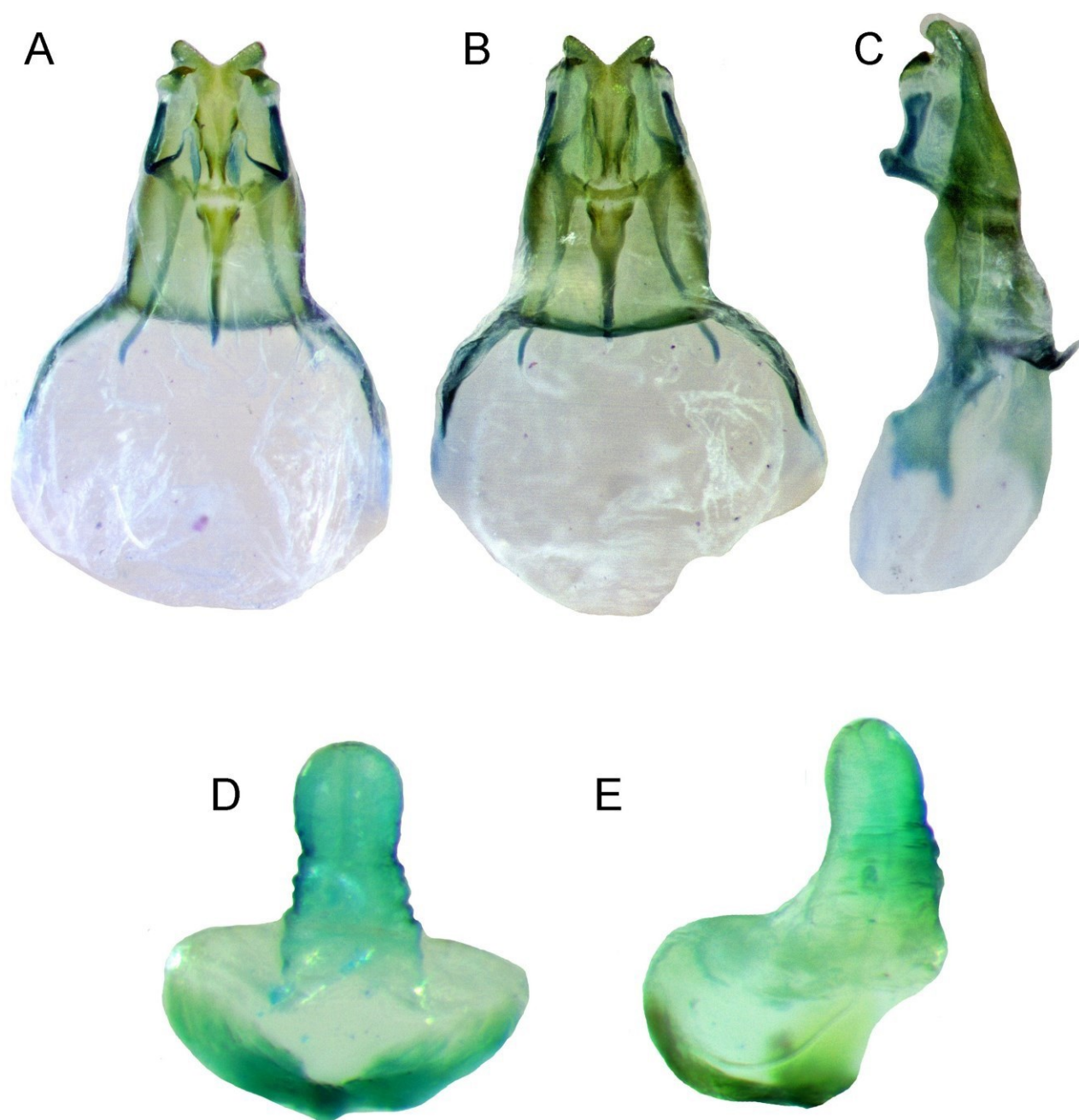


FIGURE 14. *Lebinthus hamus* sp. nov. habitus of male (A, B) and female (C, D) in dorsal (A, C) and lateral (B, D) views. Scale bars: 5 mm.





**FIGURE 15.** *Lebinthus hamus* **sp. nov.** male genitalia in dorsal (A), ventral (B), and lateral (C) views, and female copulatory papilla in dorsal (D) and lateral views (E).

**TABLE 4.** Measurements of *Lebinthus hamus* **sp. nov.**

	PronL	PronW	FWL	FWW	HWT	FIIL	FIIW	TIIL
Male holotype	2.5	4.0	3.6	3.0	-	12.2	3.8	10.4
Female allotype	1.9	3.0	1.3	1.7	-	8.3	3.0	7.6
	TIIIs				TallIs			OL
	las	lbs	Oas	Obs	Int	Ext/dors	Ext/lat	
Male holotype	7	7	9	7	0	3	1	-
Female allotype	6	4	11	5	0	3	0	8.4

**Male.** FWs (Fig. 22D) not reaching abdomen mid-length. Cells orange to golden brown, not translucent. M and R golden brown, M/R area whitish, without transverse veins; area between R and Sc dark brown, rest of lateral field progressively lighter toward ventral margin, with dark brown longitudinal veins. 1A slightly curved ( $<100^\circ$ ). CuP absent. Diagonal vein faint, barely visible anteriorly. Harp wide, occupying most of dorsal field surface, with a strong transverse harp vein, poly-furcated anteriorly and forming a false mirror, slightly rounded. CuA curved iwards near apex, its distal part weak. Longitudinal veins of dorsal field very strong apically, transverse veins weaker. Mirror (d1) not differentiated. Apical field very short, with no bifurcation of CuA posterior to diagonal vein. Lateral field with five strong longitudinal veins including M, R, Sc and two more ventral veins. Subgenital plate elongate, clog shaped.

**Male genitalia** (Figs. 15A–C). Pseudepiphallic sclerite triangular, widened anteriorly; posterior apex with short triangular lophi curved dorsally and slightly diverging, setose, separated by a wide V-shaped indentation; anterior apex slightly curved anteriorly, its lateral margins slightly curved dorsally. Rami short, highly diverging. Pseudepiphallic parameres hook shaped. Ectophallic arc complete and wide, near bases of pseudepiphallic parameres, prolonged ventrally by hook-like expansions, very sclerotized. Ectophallic fold longer than wide, with two sub-parallel lateral sclerotizations with lateral expansions. Ectophallic apodemes very long, diverging, narrowing apically, exceeding anterior margin of pseudepiphallicus. Endophallic sclerite long, almost straight and exceeding anterior margin of pseudepiphallicus, with small median expansion and short lateral arms; endophallic apodeme with a small median crest.

**Female.** FWs (Fig. 23D) shorter than pronotum, not overlapping but close together basally, their posterior margin straight. Dorsal field yellowish, with six strong golden brown longitudinal veins, slightly curved apically; with few transverse veins. Lateral field with four strong yellow brown to golden brown longitudinal veins; transverse veins stronger anteriorly. Ovipositor longer than hind femora; apex lanceolate, slightly denticulate on dorsal edge. Copulatory papilla (Figs. 15D, 15E) conical, narrow dorso-ventrally; base wide and oblong, sclerotized; apex short, enlarged and rounded, its lateral margins corrugated.

**Measurements (in mm).** See Table 4.

**Habitat.** Unknown.

### ***Lebinthus magayon* Baroga-Barbecho & Robillard sp. nov.**

(Figs. 1, 16, 17, 20E, 21E, 23E)

**Type materials.** Holotype female. **Philippines.** [Luzon]: Albay, Mt. Malinao, 24–25.x.2013 (JBB010), coll. S.A. Yap (UPLBMNH). Paratypes: 2♀ (JBB008) (UPLBMNH), right mid leg for molecular analysis (L72) (JBB009) (MNHN-EO-ENSIF10751), same information as holotype.

**Type locality.** Philippines. Luzon: Albay, Mt. Malinao

**Distribution.** Philippines. Albay, Mt. Malinao.

**Etymology.** The name comes from the word “magayon” of the Bicol language, which is a term used to appreciate the beauty of a woman, relating it to the type material used to describe the species.

**Diagnosis.** Species of average size, dark brown to black in color. Face and mouthparts completely orange to golden brown. Copulatory papilla pentagonal in shape.

**Description.** Size average for the genus (Figs. 16, Table 5). General coloration dark brown to black. Head dorsum (Fig. 20E) black. Scapes and antennae dark brown, each antennal segment lined with black markings. Face and mouthparts completely orange to golden brown. Maxillary palpi brown. Head lateral side (Fig. 21E) orange brown to dark brown. Dorsal disk of pronotum dark brown with few dark patterns. Lateral lobe of pronotum dark brown, with brownish to yellowish patterns basally. Legs brown, hind femora covered with thin yellowish to whitish setae. Hind knees black, tibiae dark brown. Hind tarsomeres with 3–4 spines on dorsal outer edge and one on outer faces ( $n=3$ ). Abdomen homogeneously dark brown to black. Cerci brown.

**Female.** FWs (Fig. 23E) close to that of *L. estrellae*, very short, their posterior margin curved, reaching posterior margin of first tergite, far from overlapping. Dorsal field brown with five strong dark brown longitudinal veins (3–5 in *L. estrellae*). Lateral edge brown, with four strong dark brown longitudinal veins. Ovipositor shorter than hind femora; apex lanceolate, dorsal edge without denticulation, slightly carinated. Copulatory papilla (Fig. 17) pentagonal shape, membranous.

**Male.** Unknown.

**Measurements (in mm).** See Table 5.

**Habitat.** The species was found in vegetation, on top of fern plants.

**A**



**B**



**FIGURE 16.** *Lebinthus magayon* **sp. nov.** habitus of female in dorsal (A) and lateral (B) views. Scale bar: 5 mm.

**A**



**B**

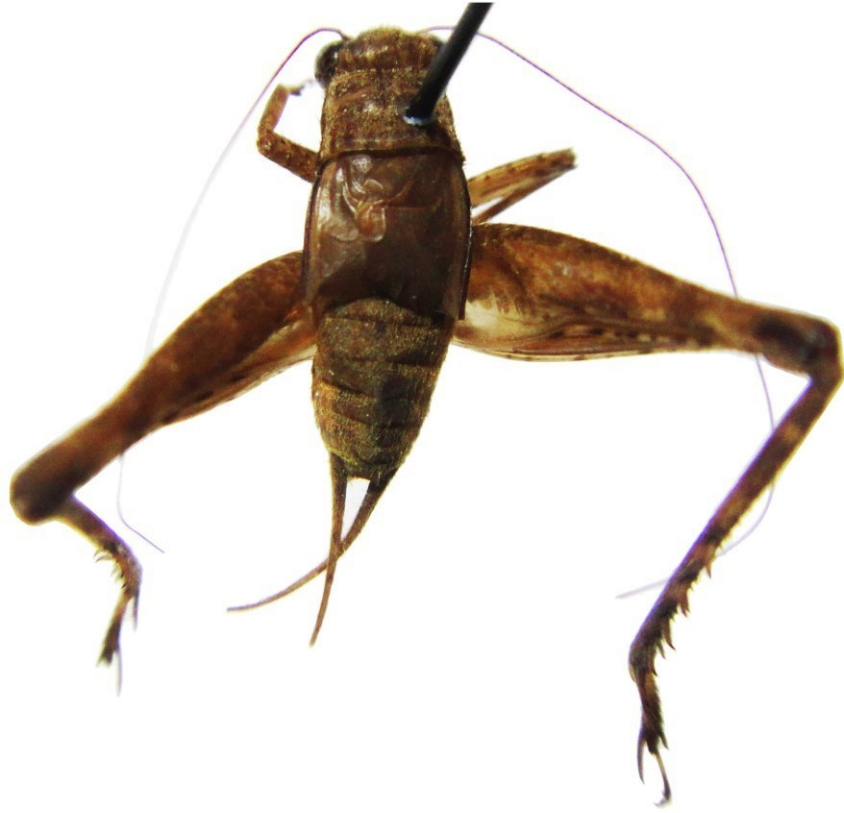


**FIGURE 17.** *Lebinthus magayon* **sp. nov.** female copulatory papilla in dorsal (A) and lateral views (B).

---



A



B



FIGURE 18. *Lebinthus boracay* **sp. nov.** habitus of male (A) and female in its natural environment (B).



**TABLE 5.** Measurements of *Lebinthus magayon* **sp. nov.**

	PronL	PronW	FWL	FWW	HWT	FIIL	FIIW	TIIL
Female holotype	2.8	4.9	1.6	1.8	-	12.8	4.2	10.6
Female paratype (n=2)	2.8	5.1–5.3	1.7–1.9	1.9–2.3	-	13.2–14.1	4.2–4.7	10.7–11.1
	TIIIs					TallIs		OL
	las	lbs	Oas	Obs	Int	Ext/dors	Ext/lat	
Female holotype	5	3	6	6	0	4	1	10.2
Female paratype (n=2)	3–5	4–5	7–10	5–6	0	3–4	1	10.8–11.2

***Lebinthus boracay* Baroga-Barbecho, Yap & Robillard sp. nov.**

(Figs. 1, 18, 19, 20F, 22E)

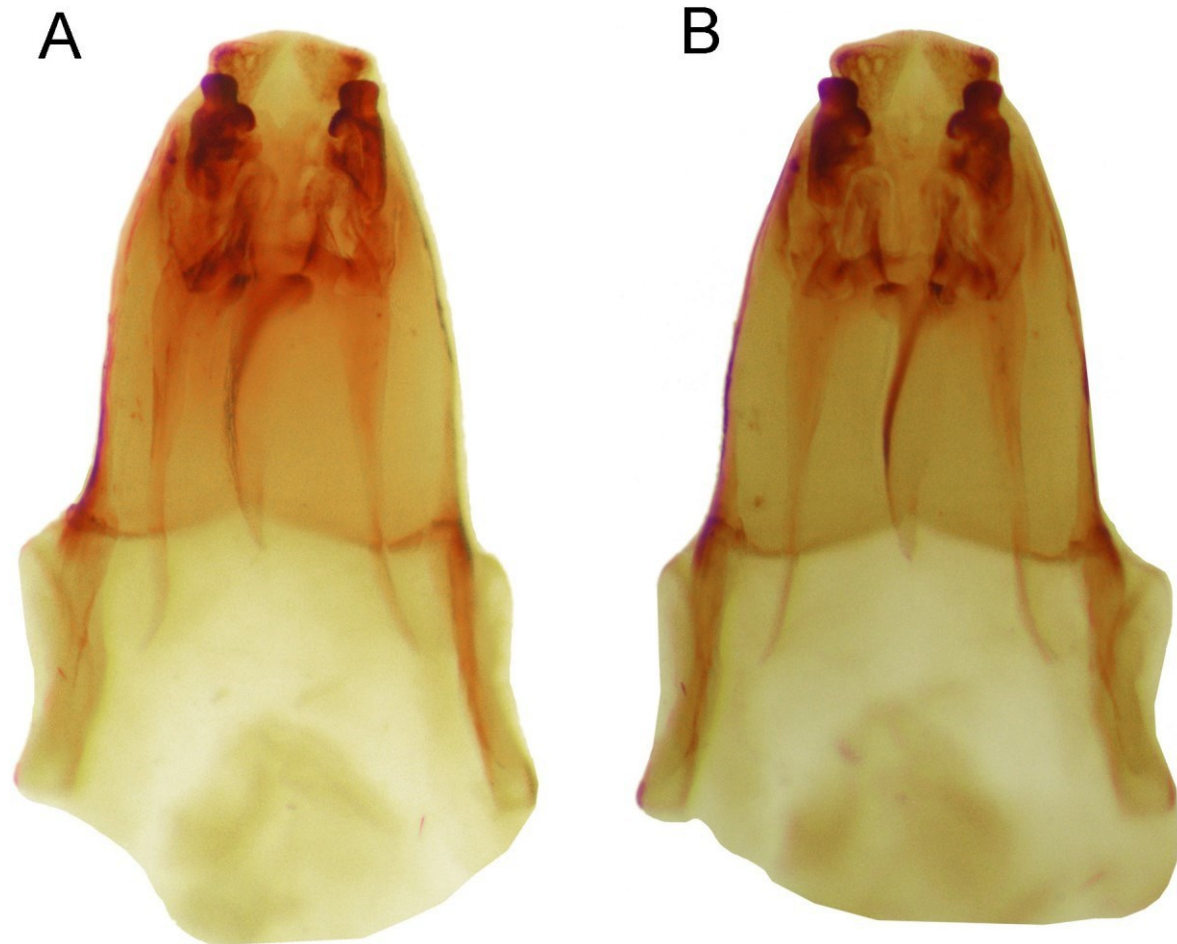
**Type material.** Holotype male. **Philippines.** [Visayas]: Aklan, Boracay Is., Balinghai Beach Resort, 1♂ (JBB029), right mid leg for molecular analysis (L141), 14.v.2014, coll. J.B. Baroga, S.A. Yap, & B.J.S. Zulueta (UPLBMNH). Paratype (1 ♂) (JBB030), same information as holotype, right mid leg for molecular analysis (L73) (MNHN-EO- ENSIF11257).

**Type locality.** **Philippines.** Visayas: Aklan, Boracay Is., Balinghai Beach Resort.

**Distribution.** Philippines. Aklan, Boracay.

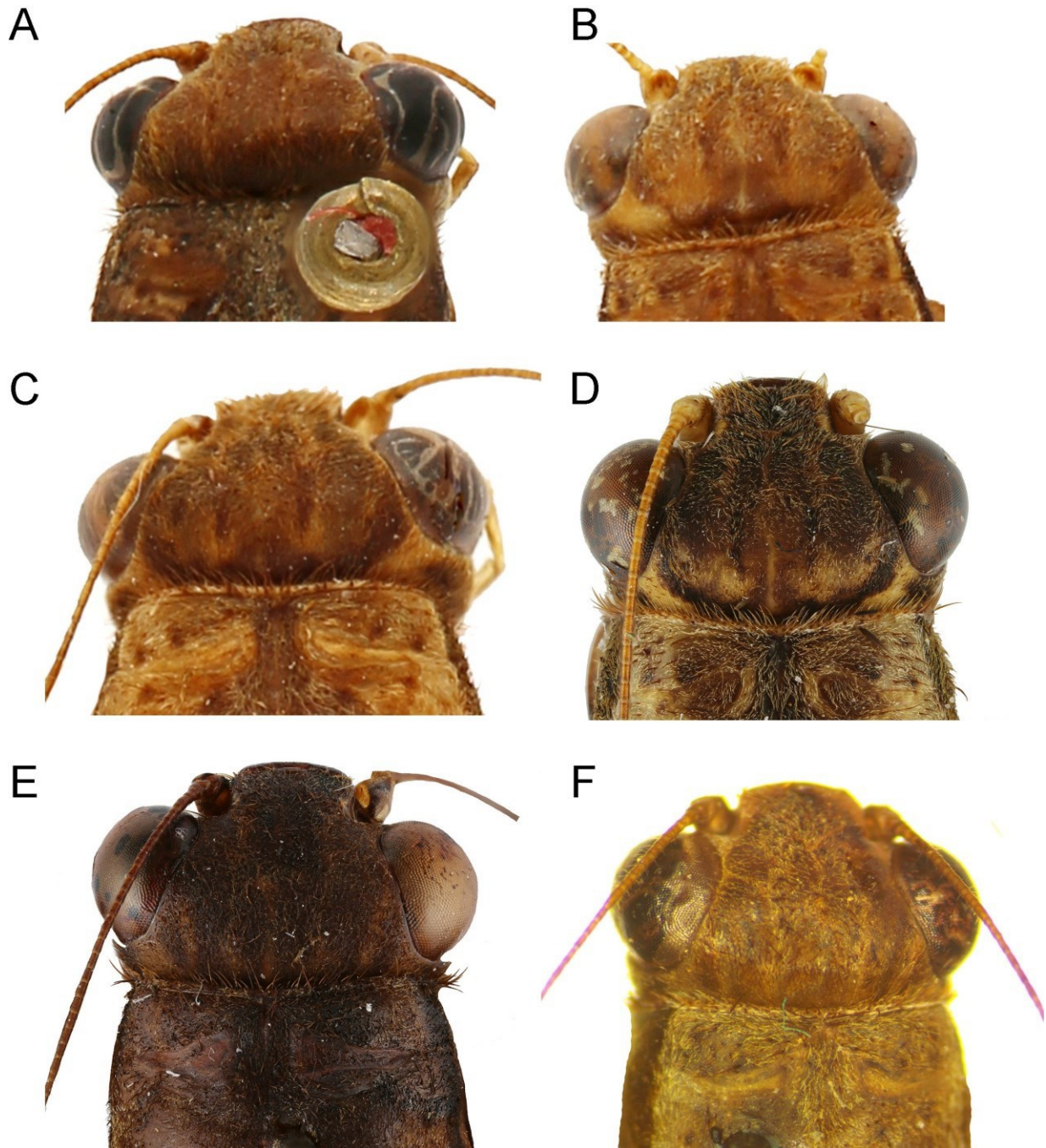
**Etymology.** The species is named after the type locality.

**Diagnosis.** Species close to *L. bitaeniatus* from which it differs by faint but wide yellowish longitudinal bands on abdomen (thinner in *L. bitaeniatus*) and features of male genitalia, including shape of pseudepiphallic parameres and ectophallic apodemes longer than in *L. bitaeniatus*, exceeding anterior margin of pseudepiphallus.



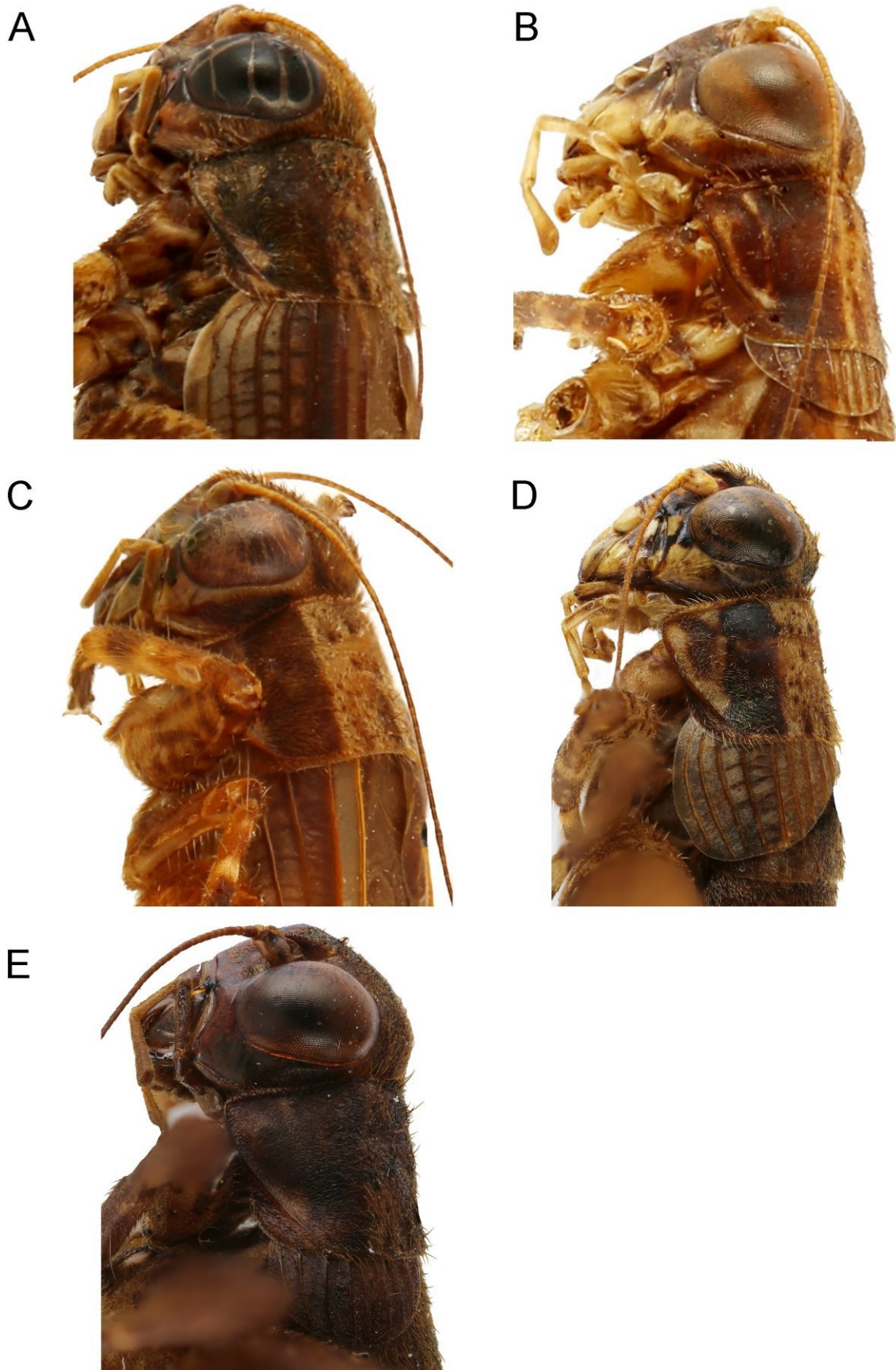
**FIGURE 19.** *Lebinthus boracay* **sp. nov.** male genitalia in dorsal (A) and ventral (B) views.

**Description.** Size large for the genus (Fig. 18). Head dorsum (Fig. 20F) with six wide dark brown longitudinal bands. Fastigium wider than long, setose, dark brown, apex yellow with two thin black spots on facial part almost touching each other; yellow brown, antennae brown. Epistomal suture brown (yellow in *L. bitaeniatus* and *L. luae*). Mouthparts yellow brown, including maxillary palpi. Lateral part of head with a yellow area posterior to eye, un-derlined by a black band, then progressively lighter from dorsal to ventral region. Dorsal disk of pronotum slightly mottled with dark brown spots, with short black longitudinal lines on posterior apex. Lateral edges dark brown. Lateral lobes of pronotum dark brown dorsally, brown to yellow ventrally. Fore and median legs yellow brown, femora with brown spots and longitudinal patterns, tibiae with rings. Hind femora brown, with strong striated dark brown patterns on outer faces, knees black; hind tibiae brown basally darker to black apically, with yellow rings. For all pairs of legs, Tal and TalII yellow basally, dark brown apically. Abdomen homogeneously dark brown dorsally, covered with golden setae, lateral edges with faint but wide yellowish longitudinal bands. Sclerites yellowish brown with dark brown patterns laterally. Cerci yellowish basally, with black rings near apex, ventral side black.



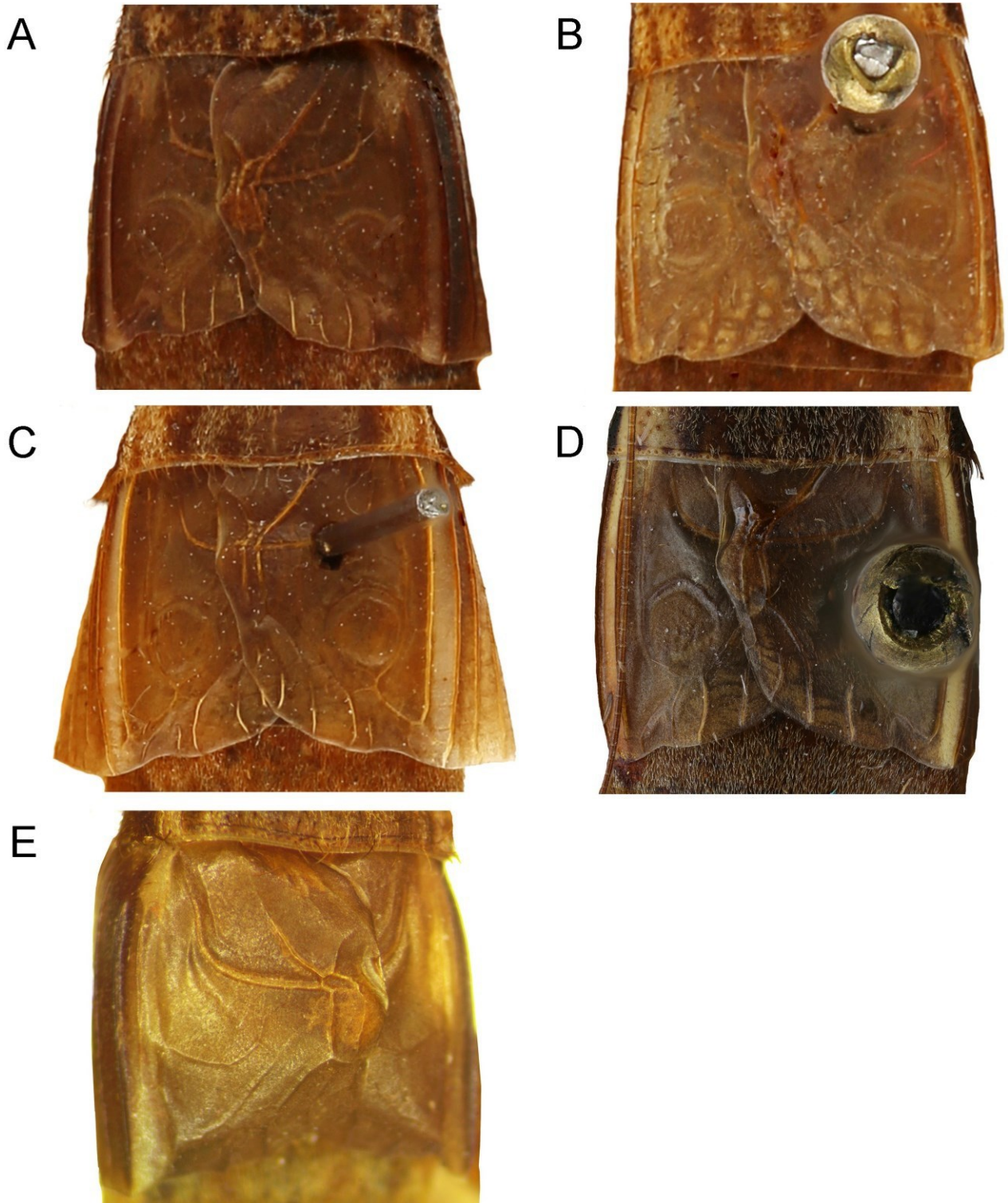
**FIGURE 20.** Head in dorsal view: *L. dannybaletai* sp. nov. (A); *L. parvus* sp. nov. (B); *L. palaceus* sp. nov. (C); *L. hamus* sp. nov. (D); *L. magayon* sp. nov. (E); *L. boracay* sp. nov. (F).





**FIGURE 21.** Head and pronotum in lateral view: *L. dannybaletei* **sp. nov.** (A); *L. parvus* **sp. nov.** (B); *L. palaceus* **sp. nov.** (C); *L. hamus* **sp. nov.** (D); *L. magayon* **sp. nov.** (E).

---



**FIGURE 22.** Male tegmen in dorsal view: *L. dannybaletai* **sp. nov.** (A); *L. parvus* **sp. nov.** (B); *L. palaceus* **sp. nov.** (C); *L. hamus* **sp. nov.** (D); *L. boracay* **sp. nov.** (E).

**Male.** FWs (Fig. 22E) not reaching abdomen mid-length, cells and veins brown, not translucent; angle between dorsal and lateral field yellow, forming a narrow longitudinal band, including bases of CuA (rest of CuA dark brown), bases of M, CuA/M area, and half of M/R area. CuP absent. Area posterior to plectrum strongly sclerotized. Harp wide, with a longitudinal fold near angle of 1A, with 1 harp vein. Distal part of CuA straight. Mirror (d1)



not differentiated. Apical field very short, with no bifurcation of CuA posterior to diagonal vein. Lateral field dark brown, with five strong longitudinal veins including M, R, Sc and two more ventral veins.

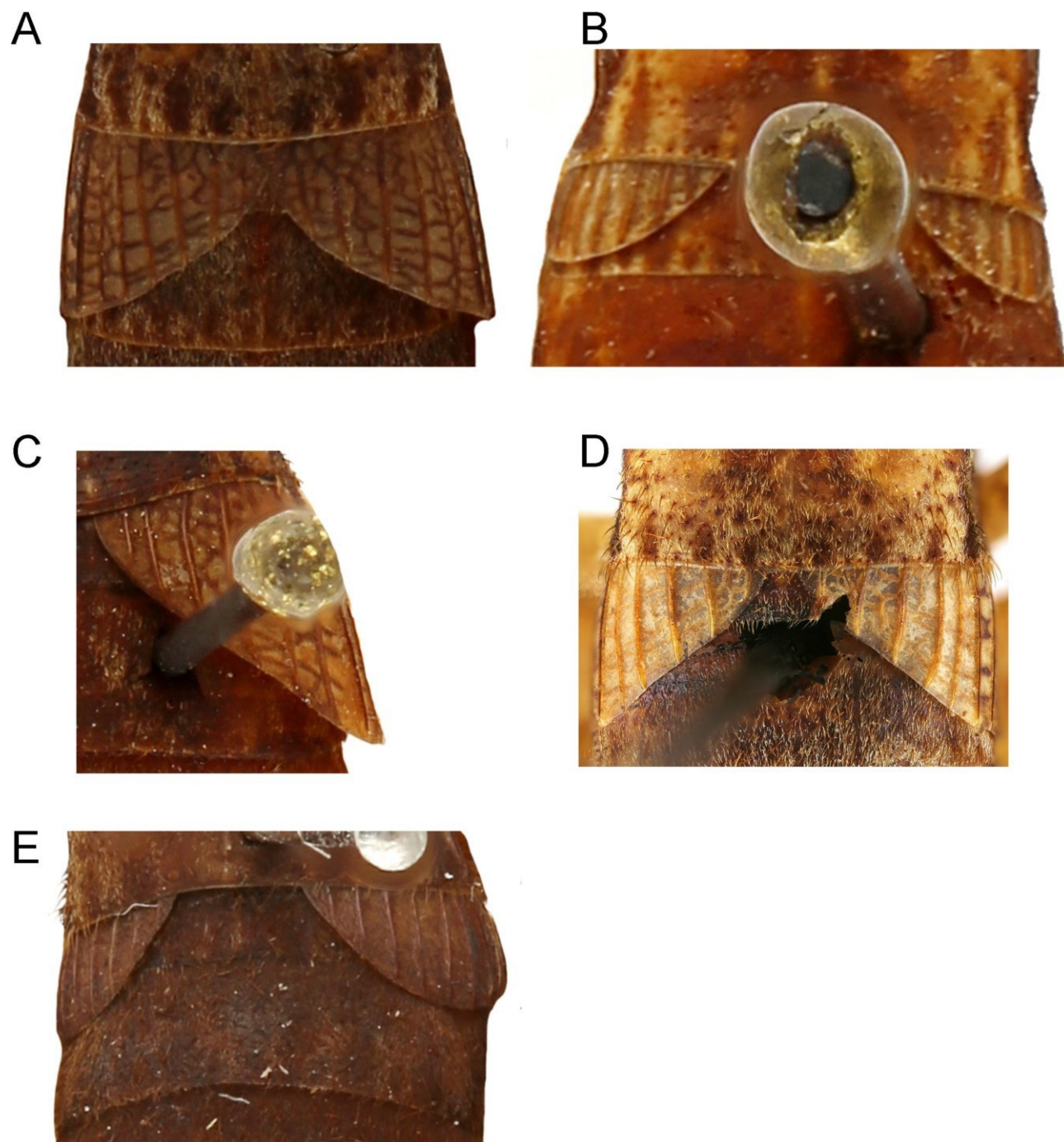


FIGURE 23. Female tegmen in dorsal view: *L. dannybaletei* **sp. nov.** (A); *L. parvus* **sp. nov.** (B); *L. palaceus* **sp. nov.** (C); *L. hamus* **sp. nov.** (D); *L. magayon* **sp. nov.** (E).

TABLE 6. Measurements of *Lebinthus boracay* **sp. nov.**

	PronL	PronW	FWL	FWW	HWT	FIIL	FIIW	TIIL
Male paratype (n=1)	2.9	3.7	4.4	3.2	-	12.1	3.8	10.4
	TIIIs		TallIs			OL		
	las	lbs	Oas	Obs	Int	Ext/dors	Ext/lat	
Male paratype (n=1)	8	6	11	7	-	-	-	-

**Male genitalia** (Fig. 19). Close to that of *L. bitaeniatatus*. Pseudepiphallic sclerite trapezoidal, convex dorsally, its apex not trilobate, lophi barely individualized Rami short, half as long as pseudepiphallic sclerite. Pseudepiphallic parameres differing from that of *L. bitaeniatatus* by more rectangular shape of their posterior lobe. Ectophallic arc complete and wide. Ectophallic fold wide and triangular, with a wide M-shaped sclerotization as in *L. bitaeniatatus*, apex membranous. Ectophallic apodemes long and parallel (longer than *L. bitaeniatatus*), exceeding anterior margin of pseudepiphallicus. Endophallic sclerite long, exceeding anterior margin of pseudepiphallicus, convex dorsally, its posterior apex with a small median triangular expansion and with short thick lateral arm.

**Female** (based on photograph, Fig. 18B). FWs nearly as long as pronotum, light brown dorsally with at least four strong dark brown longitudinal veins; posterior margin slightly curved; lateral field darker. Ovipositor slightly shorter than FIII.

**Habitat.** *L. boracay* is found in a secondary habitat on top of leaves in small plants in the garden of Balinghai Beach Resort.

## Acknowledgements

We are grateful to the Department of Science and Technology-Accelerated Science and Technology Human Resource Development Program (DOST-ASTHRDP) for J.B. Baroga-Barbecho's MS scholarship and to UP-Continuous Operational and Outcomes-based Partnership for Excellence in Research and Academic Training Enhancement (COOPERATE) Program for the travel grant, which allow us to further examine the specimens at MNHN, Paris France. The MNHN gives access to the collections in the framework of the RECOLNAT national Research Infrastructure (ANR-11-INBS-0004). We also thank Mr. Jose Macavinta and family for the accommodation during our stay in Boracay and Mr. Brian Joseph S. Zulueta for accompanying us during the sampling collection. To Mr. Normandy M. Barbecho and Mr. Maverick Asio for collecting the specimens in Mt. Porras and Simon Poulain of MNHN, France for taking photos of the specimens, and to Shepherd Myers and Franck Howarth (BPBM) for loans of specimens from BPBM. M.K. Tan's work in the Philippines was granted by the Orthoptera Species File Grant 2018 under the taxonomic research project with the title "Advancing biodiversity informatics of Orthoptera from the Philippines".

## References

- Araya-Salas, M. & Smith-Vidaurre, G. (2017) warbleR: an R package to streamline analysis of animal acoustic signals. *Methods in Ecology and Evolution*, 8 (2), 184–191.  
<https://doi.org/10.1111/2041-210X.12624>
- Baroga, J.B., Yap, S.A. & Robillard, T. (2016) Two new species of Eneopterinae crickets (Orthoptera: Gryllidae) from Luzon, Philippines. *Zootaxa*, 4139 (1), 93–105.  
<https://doi.org/10.11646/zootaxa.4139.1.5>
- Bolívar, I. (1889) Enumeración de Grílicos de Filipinas. *Anales de la Sociedad Española de Historia Natural*, 18, 415–431. Bruner, L. (1915) Preliminary catalogue of the Orthopteroid insects of the Philippines Island. *the University Studies of the University of Nebraska*, 15 (2), 195–281.
- Casto de Elera, R.P.F. (1895) Ortopteros. *Catálogo sistemático de toda la fauna de Filipinas*, 2, 189–223. <https://doi.org/10.5962/bhl.title.58548>
- Chopard, L. (1929) *Orthoptera Palaearctica critica: VII. Les Polyphagiens de la faune paléarctique (Orth., Blatt.)*. *Eos*, 5, 223–358.
- Desutter-Grandcolas, L. (2003) Phylogeny and the evolution of acoustic communication in extant Ensifera (Insecta, Orthoptera). *Zoologica Scripta*, 32, 525–561.  
<https://doi.org/10.1046/j.1463-6409.2003.00142.x>
- Fung, T.K., Tan, M.K. & Sivasothi, N. (2018) Orthoptera in the scat content of the common palm civet (*Paradoxurus hermaphroditus*) in Pulau Ubin, Singapore. *Nature in Singapore*, 11, 37–44.
- Kirby, W.F. (1906) Orthoptera Saltatoria. Part I. (Achetidae et Phasgonuridae). *A Synonymic Catalogue of Orthoptera (Orthoptera Saltatoria, Locustidae vel Acridiidae)*, 2, i–viii + 1–562.
- Oshiro, Y. (1996) Description of a new species of the genus *Lebinthus* Stål (Orthoptera, Gryllidae) from Lan Yu Island, Taiwan. *Japanese Journal of Systematic Entomology*, 2 (2), 117–121.
- Otte, D. (2007) New species of *Cardiodactylus* from the western Pacific region. *Proceedings of the Academy of Natural Sciences of Philadelphia*, 156, 341–400.

[https://doi.org/10.1635/0097-3157\(2007\)156\[341:NSOCFT\]2.0.CO;2](https://doi.org/10.1635/0097-3157(2007)156[341:NSOCFT]2.0.CO;2)

- R Core Team (2018) *R: A language and environment for statistical computing*. R Foundation for Statistical Computing, Vienna. [program]
- Ragge, D.R. (1955) *The wing venation of the Orthoptera Saltatoria*. British Museum (Natural History), London, 159 pp.
- Robillard, T. (2010) New species of the genus *Lebinthus* (Orthoptera, Grylloidea, Eneopterinae, Lebinthini) from Indonesia and the Solomon Islands. *Zootaxa*, 2386 (1), 25–48.  
<https://doi.org/10.11646/zootaxa.2386.1.2>
- Robillard, T. & Desutter-Grandcolas, L. (2004a) Phylogeny and the modalities of acoustic diversification in extant Eneopterinae (Insecta, Orthoptera, Grylloidea, Eneopteridae). *Cladistics*, 20 (3), 271–293.  
<https://doi.org/10.1111/j.1095-0031.2004.00025.x>
- Robillard, T. & Desutter-Grandcolas, L. (2004b) High-frequency calling in Eneopterinae crickets (Orthoptera, Grylloidea, Eneopteridae): an adaptive radiation revealed by phylogenetic analysis. *Biological Journal of the Linnean Society*, 83, 577–584.  
<https://doi.org/10.1111/j.1095-8312.2004.00417.x>
- Robillard, T. & Desutter-Grandcolas, L. (2006) Phylogeny of the cricket subfamily Eneopterinae (Insecta, Orthoptera, Grylloidea, Eneopteridae) based on four molecular loci and morphology. *Molecular Phylogenetics and Evolution*, 40, 643–661.  
<https://doi.org/10.1016/j.ympev.2005.10.019>
- Robillard, T. & Desutter-Grandcolas, L. (2008) Clarification of the taxonomy of extant crickets of the subfamily Eneopterinae (Orthoptera: Grylloidea; Gryllidae). *Zootaxa*, 1789 (1), 66–68.  
<https://doi.org/10.11646/zootaxa.1789.1.3>
- Robillard, T., Montealegre-Z, F., Desutter-Grandcolas, L., Grandcolas, P. & Robert, D. (2013) Mechanisms of high-frequency song generation in brachypterous crickets and the role of ghost frequencies. *Journal of Experimental Biology*, 216 (11), 2001–2011.  
<https://doi.org/10.1242/jeb.083964>
- Robillard, T., Yap, S.A. & Yngente, M.V. (2013) Systematics of cryptic species of *Lebinthus* crickets in Mount Makiling (Grylloidea, Eneopterinae). *Zootaxa*, 3693 (1), 49–63.  
<https://doi.org/10.11646/zootaxa.3693.1.3>
- Robillard, T. & Tan, M.K. (2013) A taxonomic review of common but little known crickets from Singapore and the Philippines (Insecta: Orthoptera: Eneopterinae). *the Raffles Bulletin of Zoology*, 61 (2), 705–725.
- Robillard, T. & Yap, S.A. (2015) The Eneopterinae crickets from Leyte Island (Philippines) with description of two new species [Insecta: Orthoptera: Grylloidea: Gryllidae]. *the Raffles Bulletin of Zoology*, 63, 69–90.
- Schneider, E.S., Römer, H., Robillard, T. & Schmidt, A.K.D. (2017) Hearing with exceptionally thin tympana: Ear morphology and tympanal membrane vibrations in eneopterine crickets. *Scientific Reports*, 7 (15266), 1–12. <https://doi.org/10.1038/s41598-017-15282-z>
- Stål, C. (1877) Orthoptera nova ex Insulis Philippinis. *Öfversigt af Kongl. Vetenskaps-akademiens handlingar*, 34 (10), 35–58.
- Tan, M.K. (2010) Orthoptera in Pulau Ubin. *Nature in Singapore*, 3, 245–268.
- Tan, M.K. (2012) *Orthoptera in the Bukit timah and Central Catchment Nature Reserves. Part 2. Suborder Ensifera*. Raffles Museum of Biodiversity Research, National University Singapore, Singapore, 70 pp. [uploaded 14 November 2012]
- Tan, M.K. (2013) Orthoptera in the mangroves of Singapore. *Nature in Singapore*, 6, 289–230.
- Tan, M.K. (2017) *Orthoptera in the Bukit timah and Central Catchment Nature Reserves. Part 2. Suborder Ensifera. 2nd Edition*. Lee Kong Chian Natural History Museum, National University of Singapore, Singapore, 101 pp. [uploaded 16 June 2017]
- Tan, M.K., Choi, J. & Shankar, N. (2017) Trends in new species discovery of Orthoptera (Insecta) from Southeast Asia. *Zootaxa*, 4238 (1), 127–134.  
<https://doi.org/10.11646/zootaxa.4238.1.10>
- Tan, M.K., Ngiam, R.W.J. & Ismail, M.R.B. (2012) A checklist of Orthoptera in Singapore parks. *Nature in Singapore*, 5, 61–67.
- Tan, M.K. & Robillard, T. (2014) A new species of *Cardiodactylus* (Orthoptera: Grylloidea: Eneopterinae) from Singapore. *Zootaxa*, 3764 (3), 364–376.  
<https://doi.org/10.11646/zootaxa.3764.3.6>
- Tan, M.K. & Wang, L.K. (2012) The Orthoptera of Semakau Landfill, Singapore: A Project Semakau checklist. *Nature in Singapore*, 5, 309–318.
-