



**HAL**  
open science

# Golgiopathies reveal the critical role of the sorting machinery in brain and skeletal development

Vincent El Ghouzzi, Gaëlle Boncompain

► **To cite this version:**

Vincent El Ghouzzi, Gaëlle Boncompain. Golgiopathies reveal the critical role of the sorting machinery in brain and skeletal development. *Nature Communications*, 2022, 13 (1), pp.7397. 10.1038/s41467-022-35101-y . hal-03883807

**HAL Id: hal-03883807**

**<https://hal.science/hal-03883807>**

Submitted on 4 Dec 2022

**HAL** is a multi-disciplinary open access archive for the deposit and dissemination of scientific research documents, whether they are published or not. The documents may come from teaching and research institutions in France or abroad, or from public or private research centers.

L'archive ouverte pluridisciplinaire **HAL**, est destinée au dépôt et à la diffusion de documents scientifiques de niveau recherche, publiés ou non, émanant des établissements d'enseignement et de recherche français ou étrangers, des laboratoires publics ou privés.



# Golgiopathies reveal the critical role of the sorting machinery in brain and skeletal development

Vincent El Ghouzzi & Gaelle Boncompain



Association genetic studies and genome-scale CRISPR screens have recently identified ARF3 and TMEM251/LYSET/GCAF as Golgi-resident factors essential to brain and skeletal development. Here we discuss how even though the consequences of mutations in these genes affect endosomal and lysosomal compartments, the problem originates in the Golgi complex and may involve either the identity of the carrier vesicles or that of cargo molecules.

Intracellular trafficking is a highly dynamic and finely regulated process that ensures development and homeostasis in all cell compartments. At the heart of these pathways, the Golgi complex (GC) plays a central role in the recognition of neosynthesized proteins and lipids to tag them post-translationally, sort and package them in appropriate carriers and address them to their destination of interest. A logical consequence is that primary dysfunctions of the GC lead to variable and heterogeneous pathologies affecting multiple organs. If confirmed by the increasing number of disease-related genes associated with the GC, brain and skeletal development appear strikingly often affected by primary impairments of the sorting machinery<sup>1</sup>. In a series of studies just published in Nature Communications<sup>2,3</sup>, Science<sup>4,5</sup> and Human Mutation<sup>6</sup>, two new Golgiopathies associated with the GTPase ARF3 and TMEM251 highlight this particular vulnerability of the nervous system and skeletal development and reveal that the destiny of both carriers and cargos is determined in the Golgi.

## ARF3, a second member of the ARF family implicated in a developmental disorder

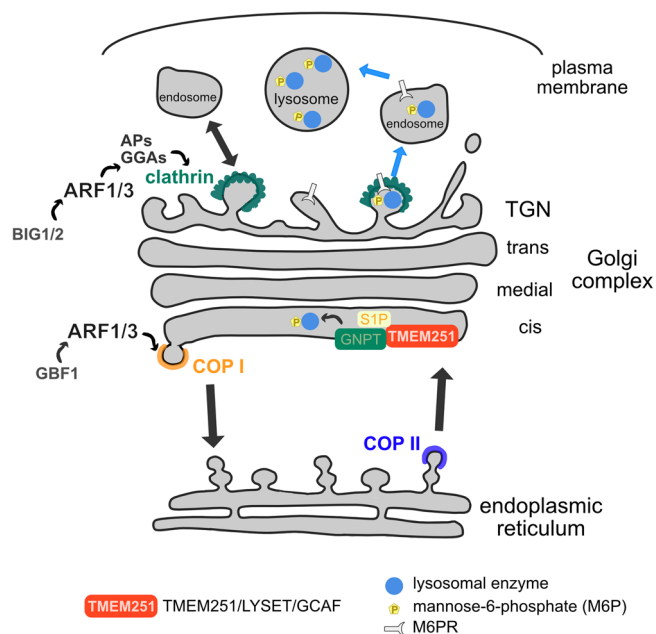
ADP-Ribosylation factors (ARFs) are highly conserved GTPases involved in the formation of carrier vesicles. Through their ability to recruit coat proteins at the surface of budding vesicles and interact with various adaptor proteins (AP), ARFs contribute to specify membrane carriers and promote cargo transport. All human ARFs except ARF6 are localized to the GC and so far only ARF1 has been associated with human pathogenic variants, in patients with developmental delay and brain malformation<sup>7,8</sup>. ARF1 share 96% aminoacid identity with ARF3 and it is assumed that their functions are partially interchangeable throughout the GC although studies have shown that ARF3 preferentially localizes to the TGN and is more specifically involved in the endosomal recycling pathway while ARF1 functions to both the *cis* and *trans* sides of the GC<sup>9,10</sup>. Human causal genetic variants have now been identified in ARF3 as well, in patients with a developmental disease

impairing brain and skeletal development<sup>2,11</sup>. Most individuals with severe illness display progressive microcephaly, intellectual delay, delayed myelination and epilepsy, as well as scoliosis and thoracic abnormalities, defects typically reported in other developmental Golgiopathies<sup>12,13</sup>. Interestingly, most variants target the GDP/GTP binding pocket of ARF3 by which ARF Guanine Nucleotide Exchange Factors (ARFGEFs) and ARF GTPase Activating Proteins (ARFGAPs) control its activation state, and these *de novo* variants appear to induce either blockage or maintenance of ARF3 activation. Importantly, expression of the variants in zebrafish phenocopy the human phenotype, whereas downregulating endogenous expression of fish *arf* genes does not, indicating a dominant mechanism of action<sup>2</sup>. The expression of the variants disorganizes the structural morphology of the GC and the formation of COP-I vesicles at the *cis* face of the Golgi, but also impacts the post-Golgi function of ARF3 in cargo recycling through the endosomal compartments, judging by significant delays in transferrin recycling and accumulation of unrecycled transferrin in lysosomes. These data suggest that the role of GC in controlling vesicle formation is disrupted in many cells and will impact tissue homeostasis throughout the life of the individual with variable defects and heterogeneity in severity and organs affected but do not explain the specific involvement of the brain and the skeleton. In an effort to address this issue, Fasano et al. showed that ARF3 also plays a role in early developmental processes such as the control of the mitotic spindle orientation in neural progenitor division during neurogenesis and planar cell polarity (PCP) that governs the collective morphogenetic events which organize initial body axes<sup>2</sup>. This role of ARF3 in cell polarity during development echoes an emerging function of the GC in post-Golgi transport of polarity determinants to the apical surface of apical radial glial cells, a process that controls the balance between maintenance and delamination of neural progenitors during neocortex development<sup>14</sup>.

Through the prism of ARF-regulated mechanisms, the control of membrane transport by the GC thus appears critical for both development and homeostasis of differentiated tissues. Of interest, the particular sensibility of the nervous and/or skeletal systems to transport vesicles can also be seen in patients with genetic variants in the ARFGEFs BIG1 and BIG2<sup>15–17</sup>, which promote ARF activation at the TGN, as well as in components of protein coats recruited by ARF proteins at both sides of the GC, such as COP-I coat proteins<sup>18–21</sup> or cargo adaptors of the AP complex family involved in cargo sorting at the TGN<sup>22–27</sup> (Table 1; Fig. 1). Again, the occurrence of both neonatal and progressive manifestations during childhood demonstrates the importance of the ARF pathway throughout development. Interestingly, although BIG1 and BIG2 may play redundant roles in trafficking between the TGN and endosomes<sup>28–30</sup>, the brain phenotype revealed by human mutations or deficient mouse models suggests that BIG1 controls maturation steps

**Table 1 | ARF1/3 partners and factors of the M6P pathway associated with human developmental diseases including brain and/or skeletal defects (y = yes; - = not reported)**

Factor	Main function	Subcellular location	Brain phenotype	Skeletal phenotype	#MIM
ARF1	GTPase regulating transport vesicle formation	Golgi, TGN	y	-	103180
ARF3	GTPase regulating transport vesicle formation	Golgi, TGN	y	y	103190
BIG1	Guanine nucleotide Exchange factor (GEF) regulating ARF activation	TGN, endosomes	y	-	604141
BIG2	Guanine nucleotide Exchange factor (GEF) regulating ARF activation	TGN, endosomes	y	-	605371
COP-I	Coat protein complex of transport vesicles	Golgi, ER	y	-	600959 (COP1-B1)
			y	y	606990(COP1-B2)
			y	y	600820 (COP1-D)
AP1	Cargo adaptor	TGN, endosomes	y	y	603533 (AP1-G1)
			y	-	603531/300629 (AP1-S1/S2)
AP3	Cargo adaptor	TGN, endosomes, lysosomes	y	-	603401 (AP3-B1)
			y	y	607246 (AP3-D1)
AP4	Cargo adaptor	TGN, endosomes	y	-	607245/607244/ 602296/607243(AP4-B1/E1/M1/S1)
TMEM251	Docking GNPT $\alpha$ / $\beta$ precursor in the Golgi	Golgi	y	y	619332
GNPT	Catalyzing the transfer of M6P on lysosomal enzymes	Golgi	y	y	607840/607838 (GNPTAB/GNPTG)
S1P	Proteolytic processing of the GNPT $\alpha$ / $\beta$ precursor	Golgi	-	y	603355



**Fig. 1 | ARF1/3 are involved in the formation of carrier vesicles and LYSET is involved in the targeting of lysosomal enzymes.** At the Golgi complex, ARF1/3 mediate the recruitment of coat proteins to give identity to the transport carriers. At the *cis*-Golgi and TGN, ARF1/3 recruit COP I and clathrin, respectively. TMEM251 is a Golgi protein required to add the mannose-6-phosphate (M6P) group on lysosomal enzymes, ensuring their proper addressing to the lysosome. Reprinted from “Transport and sorting in the Golgi complex: multiple mechanisms sort diverse cargo”, by G. Boncompain & A.V. Weigel, *Current Opinion in Cell Biology* 2018, 50:94–101, Copyright 2018, with permission from Elsevier Ltd.

like peripheral myelination or synaptic transmission<sup>30–32</sup> while BIG2 would rather play on the expansion and migration of neural progenitors<sup>33</sup>. Thus, one could speculate that ARF1/3 are differentially regulated at different stages of development, in progenitors or in post-mitotic cells, providing an explanation for the diversity and overlap of phenotypes observed. Ultimately, this demonstrates the developmental importance of mechanisms that regulate the transport of carrier vesicles between the GC and the cell surface.

### TMEM251, a new key piece in the mannose-6-phosphate pathway

Within the sorting machinery, the addition of the appropriate post-translational modifications is decisive for the correct targeting of proteins to their destination compartment. This is the case of the addition of the mannose-6-phosphate (M6P) group on lysosomal enzymes to be targeted to the lysosome lumen. Again, the occurrence of Golgipathies tells us that this tagging mechanism takes place in the GC and its defective machinery leads to human diseases. A series of recent studies has highlighted the key role of TMEM251/LYSET/GCAF in the M6P pathway<sup>3–5</sup>. *TMEM251* is a gene encoding a *cis*-Golgi transmembrane protein in which mutations have recently been identified in patients with severe recessive skeletal dysplasia associated with metabolic abnormalities<sup>6</sup>. Patients display progressive severe symptoms throughout their lifespan. They show severe short stature and early mortality. Although very few patients have been described so far, a patient carrying an early stop mutation also showed brain abnormalities, including thinning of the corpus callosum. Abnormal activity of lysosomal enzymes has been detected in blood samples from patients. Altogether these symptoms were reminiscent of the lysosome storage disorder called mucopolipidosis type II.

The elucidation of the function of TMEM251 and of its key role in the M6P pathway came from three concomitant CRISPR screens.

Zhang et al. carried out a screen whose read-out was designed to detect proteins involved in lysosome function based on a dual fluorescent reporter fused to the fast degrading lysosome membrane protein RNF152<sup>3</sup>. Pechincha et al. conducted a screen to identify proteins involved in the generation of nutrient from extracellular proteins *via* lysosomal catabolism to sustain cell growth<sup>4</sup>. Richards et al. applied CRISPR screening to uncover proteins critical for reovirus infection, which requires lysosomal cathepsins activity to mediate disassembly of the viral particles<sup>5</sup>. The three studies demonstrated that knocking-out of TMEM251 led to many defects related to lysosomal functions. Increase in the autophagy marker LC3-II, in the number of lysosomes and the presence of undigested material in the lysosomes were detected. The key data conducting the three groups to in-depth investigation of the role of TMEM251 in the M6P pathway relied on the detection of the secretion of lysosomal enzymes in the extracellular medium.

Lysosomal enzymes are synthesized in the endoplasmic reticulum and are then transported to the GC. At the *cis*-Golgi, they undergo a series of enzymatic reactions leading to the addition of the M6P group. The first step is performed by GlcNAc-1-phosphotransferase (GNPT) and the second step by M6P-uncovering enzyme (UCE). GNPT is an hexamer which is assembled in the ER and requires cleavage by site-1-protease (SIP) that occurs at the *cis*-Golgi. Zhang et al. showed that TMEM251 KO phenocopies GNPTAB deficiency, abolishing M6P modification and indicating that TMEM251 acts upstream of GNPTAB. TMEM251 interacts both with GNPTAB and SIP. The three studies demonstrated that TMEM251 is required for the cleavage of GNPTAB. As in the ARF3 study, experiments performed in zebrafish, where TMEM251 is conserved, recapitulated skeletal defects observed in human patients. Either GNPTAB KO or TMEM251 KO generated severe edema and skeletal dysplasia<sup>3</sup>, and loss of cartilage and calcified structures was observed in mutant zebrafish.

Other players of the M6P pathway have been linked to developmental diseases in humans. Mucopolidosis type II and III are caused by a complete or partial loss of GNPT activity, respectively. Interestingly, symptoms also include brain and severe skeletal abnormalities<sup>34,35</sup>. Mutations in SIP has also been described to lead to skeletal defects<sup>36</sup> (Table 1, Fig. 1).

## The sorting machinery at the heart of brain and skeletal development

The identification of ARF3 and TMEM251 mutations in genetic diseases and their involvement in the control of the sorting machinery underscore the critical role of the GC in the specific tagging of both carrier vesicles and cargo molecules. The congenital but also progressive nature of the symptoms illustrates that the dysfunctions generated affect the individual throughout life, affecting both key stages of fetal development and homeostasis of differentiated tissues. Why these Golgipathies particularly target the development of the skeleton and/or that of the brain still remains a mystery, although one can assume that cells which no longer divide or which require a particularly abundant secretion activity are likely more vulnerable. A limited regenerative capacity of cardiac cells could also explain the occasional involvement of the heart, known to be affected in lysosomal storage diseases, and whose defects have been observed in one of the TMEM251 patients<sup>6</sup> and in the mutant zebrafish<sup>3</sup>. Alternatively, mechanisms specific to particular steps of neurogenesis and chondrogenesis could provide an explanation. The identification of other

Golgipathies will no doubt continue to contribute to the understanding of the key functions of the GC during human development.

Vincent El Ghouzzi  & Gaelle Boncompain 

<sup>1</sup>NeuroDiderot, Inserm, Université Paris Cité, F-75019 Paris, France.

<sup>2</sup>Institut Curie, PSL Research University, CNRS UMR144, Paris, France.

✉ e-mail: [vincent.elghouzzi@inserm.fr](mailto:vincent.elghouzzi@inserm.fr); [gaelle.boncompain@curie.fr](mailto:gaelle.boncompain@curie.fr)

Received: 25 October 2022; Accepted: 18 November 2022;

Published online: 01 December 2022

## References

- Zappa, F., Failli, M. & De Matteis, M. A. The Golgi complex in disease and therapy. *Curr. Opin. Cell Biol.* **50**, 102–116 (2018).
- Fasano, G. et al. Dominant ARF3 variants disrupt Golgi integrity and cause a neurodevelopmental disorder recapitulated in zebrafish. *Nat. Commun.* **13**, 6841 (2022).
- Zhang, W. et al. GCAF(TMEM251) regulates lysosome biogenesis by activating the mannose-6-phosphate pathway. *Nat. Commun.* **13**, 5351 (2022).
- Pechincha, C. et al. Lysosomal enzyme trafficking factor LYSET enables nutritional usage of extracellular proteins. *Science* **378**, eabn5637 (2022).
- Richards, C. M. et al. The human disease gene LYSET is essential for lysosomal enzyme transport and viral infection. *Science* **378**, eabn5648 (2022).
- Ain, N. U. et al. Biallelic TMEM251 variants in patients with severe skeletal dysplasia and extreme short stature. *Hum. Mutat.* **42**, 89–101 (2021).
- Ge, X. et al. Missense-depleted regions in population exomes implicate ras superfamily nucleotide-binding protein alteration in patients with brain malformation. *Npj Genom. Med.* **1**, 16036 (2016).
- Gana, S. et al. ARF1 haploinsufficiency causes periventricular nodular heterotopia with variable clinical expressivity. *J. Med. Genet.* **59**, 781–784 (2022).
- Manolea, F. et al. Arf3 is activated uniquely at the *trans*-Golgi network by Brefeldin A-inhibited guanine nucleotide exchange factors. *Mol. Biol. Cell* **21**, 1836–1849 (2010).
- Kondo, Y. et al. ARF1 and ARF3 are required for the integrity of recycling endosomes and the recycling pathway. *Cell Struct. Funct.* **37**, 141–154 (2012).
- Sakamoto, M. et al. De novo ARF3 variants cause neurodevelopmental disorder with brain abnormality. *Hum. Mol. Genet.* **31**, 69–81 (2021).
- Passemard, S. et al. Golgi trafficking defects in postnatal microcephaly: The evidence for “Golgipathies”. *Prog. Neurobiol.* **153**, 46–63 (2017).
- Rasika, S., Passemard, S., Verloes, A., Gressens, P. & El Ghouzzi, V. Golgipathies in Neurodevelopment: A New View of Old Defects. *Dev. Neurosci.* **40**, 396–416 (2018).
- Braut, J. et al. RAB6 and dynein drive post-Golgi apical transport to prevent neuronal progenitor delamination. *EMBO Rep.* **23**, e54605 (2022).
- Thomas, Q. et al. Haploinsufficiency of ARFGEF1 is associated with developmental delay, intellectual disability, and epilepsy with variable expressivity. *Genet. Med.* **23**, 1901–1911 (2021).
- Sheen, V. L. et al. Mutations in ARFGEF2 implicate vesicle trafficking in neural progenitor proliferation and migration in the human cerebral cortex. *Nat. Genet.* **36**, 69–76 (2004).
- Banne, E. et al. West syndrome, microcephaly, grey matter heterotopia and hypoplasia of corpus callosum due to a novel ARFGEF2 mutation. *J. Med. Genet.* **50**, 772–775 (2013).
- Izumi, K. et al. ARCN1 mutations cause a recognizable craniofacial syndrome due to COP1-mediated transport defects. *Am. J. Hum. Genet.* **99**, 451–459 (2016).
- Macken, W. L. et al. Biallelic variants in COPB1 cause a novel, severe intellectual disability syndrome with cataracts and variable microcephaly. *Genome Med.* **13**, 34 (2021).
- DiStasio, A. et al. Copb2 is essential for embryogenesis and hypomorphic mutations cause human microcephaly. *Hum. Mol. Genet.* **26**, 4836–4848 (2017).
- Marom, R. et al. COPB2 loss of function causes a coatopathy with osteoporosis and developmental delay. *Am. J. Hum. Genet.* **108**, 1710–1724 (2021).
- Montpetit, A. et al. Disruption of APIS1, causing a novel neurocutaneous syndrome, perturbs development of the skin and spinal cord. *PLoS Genet.* **4**, e1000296 (2008).
- Cacciagli, P. et al. APIS2 is mutated in X-linked Dandy-Walker malformation with intellectual disability, basal ganglia disease and seizures (Pettigrew syndrome). *Eur. J. Hum. Genet.* **22**, 363–368 (2014).
- Dell’Angelica, E. C., Shotelersuk, V., Aguilar, R. C., Gahl, W. A. & Bonifacio, J. S. Altered trafficking of lysosomal proteins in hermansky-pudlak syndrome due to mutations in the  $\beta$ 3A subunit of the AP-3 adaptor. *Mol. Cell* **3**, 11–21 (1999).
- Ammann, S. et al. Mutations in AP3D1 associated with immunodeficiency and seizures define a new type of Hermansky-Pudlak syndrome. *Blood* **127**, 997–1006 (2016).
- Abou Jamra, R. et al. Adaptor protein complex 4 deficiency causes severe autosomal-recessive intellectual disability, progressive spastic paraplegia, shy character, and short stature. *Am. J. Hum. Genet.* **88**, 788–795 (2011).
- Moreno-De-Luca, A. et al. Adaptor protein complex-4 (AP-4) deficiency causes a novel autosomal recessive cerebral palsy syndrome with microcephaly and intellectual disability. *J. Med. Genet.* **48**, 141–144 (2011).

28. Ishizaki, R., Shin, H.-W., Mitsuhashi, H. & Nakayama, K. Redundant roles of BIG2 and BIG1, guanine-nucleotide exchange factors for ADP-ribosylation factors in membrane traffic between the trans-Golgi network and endosomes. *Mol. Biol. Cell* **19**, 2650–2660 (2008).
29. Shin, H.-W., Morinaga, N., Noda, M. & Nakayama, K. BIG2, a guanine nucleotide exchange factor for adp-ribosylation factors: its localization to recycling endosomes and implication in the endosome integrity. *Mol. Biol. Cell* **15**, 5283–5294 (2004).
30. Teoh, J. et al. Arfgef1 haploinsufficiency in mice alters neuronal endosome composition and decreases membrane surface postsynaptic GABAA receptors. *Neurobiol. Dis.* **134**, 104632 (2020).
31. Miyamoto, Y. et al. BIG1/Arfgef1 and Arf1 regulate the initiation of myelination by Schwann cells in mice. *Sci. Adv.* **4**, eaar4471 (2018).
32. Teoh, J.-J. et al. BIG1 is required for the survival of deep layer neurons, neuronal polarity, and the formation of axonal tracts between the thalamus and neocortex in developing brain. *PLOS ONE* **12**, e0175888 (2017).
33. Ferland, R. J. et al. Disruption of neural progenitors along the ventricular and subventricular zones in periventricular heterotopia. *Hum. Mol. Genet.* **18**, 497–516 (2009).
34. Steet, R. A. et al. A splicing mutation in the *glcNAc-1-phosphotransferase* gene results in an adult onset form of mucopolipidosis III associated with sensory neuropathy and cardiomyopathy. *Am. J. Med. Genet. A.* **132A**, 369–375 (2005).
35. Velho, R. V. et al. The lysosomal storage disorders mucopolipidosis type II, type III alpha/beta, and type III gamma: Update on *GNPTAB* and *GNPTG* mutations. *Hum. Mutat.* Humu.23748 (2019) <https://doi.org/10.1002/humu.23748>.
36. Kondo, Y. et al. Site-1 protease deficiency causes human skeletal dysplasia due to defective inter-organelle protein trafficking. *JCI Insight* **3**, e121596 (2018).

## Acknowledgements

V.E.G. and G.B. are supported by Centre National de la Recherche Scientifique. NeuroDiderot is affiliated to C-BRAINS, a field of major innovation and research (DIM) supported by the Ile-de-France Regional Council. This work was funded by Inserm, Institut Curie, Université Paris Cité, the PNRST Anses (ANSES-21-RF-24) and the ANR (ANR-20-CE13-0012).

## Author contributions

V.E.G. and G.B. wrote and discussed this Comment.

## Competing interests

The authors declare no competing interests.

## Additional information

**Correspondence** and requests for materials should be addressed to Vincent El Ghouzzi or Gaëlle Boncompain.

**Reprints and permissions information** is available at <http://www.nature.com/reprints>

**Publisher's note** Springer Nature remains neutral with regard to jurisdictional claims in published maps and institutional affiliations.

**Open Access** This article is licensed under a Creative Commons Attribution 4.0 International License, which permits use, sharing, adaptation, distribution and reproduction in any medium or format, as long as you give appropriate credit to the original author(s) and the source, provide a link to the Creative Commons license, and indicate if changes were made. The images or other third party material in this article are included in the article's Creative Commons license, unless indicated otherwise in a credit line to the material. If material is not included in the article's Creative Commons license and your intended use is not permitted by statutory regulation or exceeds the permitted use, you will need to obtain permission directly from the copyright holder. To view a copy of this license, visit <http://creativecommons.org/licenses/by/4.0/>.

© The Author(s) 2022