



HAL
open science

IWDM: The fate of an interacting non-cold dark matter – vacuum scenario

Supriya Pan, Weiqiang Yang, Eleonora Di Valentino, David F. Mota, Joseph
Silk

► **To cite this version:**

Supriya Pan, Weiqiang Yang, Eleonora Di Valentino, David F. Mota, Joseph Silk. IWDM: The fate of an interacting non-cold dark matter – vacuum scenario. *Journal of Cosmology and Astroparticle Physics*, 2023, 07, pp.064. 10.1088/1475-7516/2023/07/064 . hal-03882996

HAL Id: hal-03882996

<https://hal.science/hal-03882996v1>

Submitted on 10 Nov 2023

HAL is a multi-disciplinary open access archive for the deposit and dissemination of scientific research documents, whether they are published or not. The documents may come from teaching and research institutions in France or abroad, or from public or private research centers.

L'archive ouverte pluridisciplinaire **HAL**, est destinée au dépôt et à la diffusion de documents scientifiques de niveau recherche, publiés ou non, émanant des établissements d'enseignement et de recherche français ou étrangers, des laboratoires publics ou privés.



Distributed under a Creative Commons Attribution 4.0 International License

PAPER • OPEN ACCESS

IWDM: the fate of an interacting non-cold dark matter — vacuum scenario

To cite this article: Supriya Pan *et al* JCAP07(2023)064

View the [article online](#) for updates and enhancements.

You may also like

- [An interpretation of a simple portal dark matter model on Fermi-LAT gamma-ray excess](#)
Tanech Klangburam and Chakrit Pongkitivanichkul
- [How late can the dark matter form in our universe?](#)
Abir Sarkar, Subinoy Das and Shiv K. Sethi
- [Focus on Dark Matter](#)
Klaus Pretzl

IWDM: the fate of an interacting non-cold dark matter — vacuum scenario

Supriya Pan,^{a,h} Weiqiang Yang,^b Eleonora Di Valentino,^c
David F. Mota^d and Joseph Silk^{e,f,g}

^aDepartment of Mathematics, Presidency University,
86/1 College Street, Kolkata 700073, India

^bDepartment of Physics, Liaoning Normal University,
Dalian, 116029, P.R. China

^cSchool of Mathematics and Statistics, University of Sheffield,
Hounsfield Road, Sheffield S3 7RH, U.K.

^dInstitute of Theoretical Astrophysics, University of Oslo,
P.O. Box 1029 Blindern, N-0315 Oslo, Norway

^eInstitut d'Astrophysique de Paris (UMR7095: CNRS & UPMC- Sorbonne Universities),
F-75014, Paris, France

^fDepartment of Physics and Astronomy, The Johns Hopkins University Homewood Campus,
Baltimore, MD 21218, U.S.A.

^gBIPAC, Department of Physics, University of Oxford,
Keble Road, Oxford OX1 3RH, U.K.

^hInstitute of Systems Science, Durban University of Technology,
PO Box 1334, Durban 4000, Republic of South Africa

E-mail: supriya.maths@presiuniv.ac.in, d11102004@163.com,
e.divalentino@sheffield.ac.uk, d.f.mota@astro.uio.no, silk@iap.fr

Received April 14, 2023

Accepted July 5, 2023

Published July 28, 2023



Abstract. In most cosmological models, the equation of state of the dark matter is assumed to be zero, which means that the dark matter is pressure-less or cold. While this hypothesis is based on the abundance of cold dark matter in the universe, however, there is no compelling reason to assume that the equation of state of dark matter is exactly zero. A more general approach would be to allow for a range of values for the dark matter equation of state and use the observational data to determine which values are most likely. With the increasing accuracy of experimental data, we have chosen to explore the possibility of interacting non-cold dark matter – vacuum scenario, where the equation of state of the dark matter is constant but can take different values within a specific range. Using the Cosmic Microwave Background (CMB) anisotropies and the CMB lensing reconstruction from the Planck legacy release, plus other non-CMB measurements, namely, the baryon acoustic oscillations distance measurements, and the Pantheon catalogue from Type Ia Supernovae, we have analyzed this scenario and found that a non-zero value for the dark matter equation of state is preferred with a confidence level of over 68%. While this is not significant by itself, however, it does suggest that investigating the possibility of non-cold dark matter in the universe is worth exploring further to gain a better understanding of the nature of dark matter.

Keywords: cosmological parameters from CMBR, dark matter theory

ArXiv ePrint: [2211.11047](https://arxiv.org/abs/2211.11047)

Contents

1	Introduction	1
2	Interacting non-cold dark matter and vacuum energy	2
3	Observational data sets	6
4	Results	8
4.1	IWDM and the non-interacting scenarios	14
4.2	Bayesian evidence	14
5	Summary and conclusions	15

1 Introduction

Observational evidence suggests that our universe is dominated by two dark fluids: one is dark matter (DM) and the other is dark energy (DE) (in the context of Einstein’s General Relativity) or geometrical DE (in the context of modified gravity theories) [1]. However, the nature of these dark fluids has remained mysterious in recent years. Although the standard Λ -Cold Dark Matter scenario (henceforth Λ CDM) has been very successful in fitting a series of astronomical data sets, several theoretical and observational signatures argue that Λ CDM cosmology needs to be revised. The tensions in cosmological parameters have been quite serious in recent years [2–5]. This has motivated our scientific community to build new cosmological scenarios and test them against observational evidences, and, as a result, this has led to a vast literature of DE and geometrical DE models, see for instance refs. [6–24]. If one carefully examines the existing literature, one discovers that a common practice in building cosmological models is to assume the DM equation of state equal to zero, or, in other words, that the universe is filled with cold DM. While this assumption is motivated by structure formation, and is indeed based on the enormous success of the Λ CDM cosmology, however, let us recall that the nature of DE and DM is not yet truly known. So instead of setting the DM equation of state to zero by hand, as the sensitivity in the experimental data grows over time, we could test this assumption by allowing a free DM equation of state and let the observational data come to a conclusion. This approach has motivated several researchers to examine whether observational data indicate any non-cold nature in DM [25–30].

In the present article we actually focus on an interacting cosmological theory between DM and DE, where DM has an equation of state that varies freely over a certain range, a well justified assumption in an interacting scenario, and DE represents the vacuum energy. The interacting DM-DE models, widely known as the Interacting Dark Energy (IDE) models/Coupled dark Energy (CDE) models, are very rich both theoretically and observationally. In recent years, IDE models have been extensively investigated by many researchers, which has led to a number of interesting possibilities, including a possible alleviation of the cosmic coincidence problem [31–37], phantom crossing [38–41] and recently the alleviation of the cosmological tensions [42–59]. We recall that the origin of IDE theory was motivated by a previous proposal by Wetterich in which the author argued that the cosmological constant problem might be solved through an interaction in the cosmic sector [60]. The dynamics of

the IDE models is primarily controlled by an interaction function that modifies the expansion history of the universe at the background and perturbation levels. We refer to an incomplete list of works on the IDE models studied over the years [31–37, 42–50, 61–98]. In this article, we consider a very well known and most used interaction function and constrain the scenario using various observational data sets, namely, the Cosmic Microwave Background (CMB) anisotropies, the CMB Lensing reconstruction from the Planck legacy release, Baryon Acoustic Oscillations (BAO) distance measurements from several astronomical missions and finally the Pantheon catalogue from Type Ia Supernovae, with the aim of understanding whether a non-zero equation-of-state of DM is suggested by current observational data sets.

The manuscript is organized as follows. In section 2 we describe the key equations of the interacting non-cold dark matter – vacuum scenario. Then in section 3 we describe observational data sets and statistical methodology. In section 4 we describe the observational constraints and implications of the interacting non-cold DM – vacuum scenario. Finally, we summarize the results of the manuscript in section 5.

2 Interacting non-cold dark matter and vacuum energy

We consider an interacting scenario between vacuum energy and a non-cold dark matter fluid with equation of state W (labeled as “**IWDM**”, read as Interacting DM with equation-of-state W), in a homogeneous and isotropic universe characterized by the spatially flat Friedmann-Lemaître-Robertson-Walker (FLRW) universe. The vacuum energy is characterized by its equation of state $w_{de} = -1$ and the equation-of-state of the non-cold DM, W , could be either constant in time or dynamical. Here we explore the simplest scenario where W is constant (labeled as w_{dm} for simplicity and to match with the DM abbreviation), which can vary freely over a non-negative interval.¹ In presence of an interaction between the non-cold DM and the vacuum sector, the continuity equations read

$$\nabla_{\mu} T_j^{\mu\nu} = Q_j^{\nu}, \quad \sum_j Q_j^{\mu} = 0, \quad (2.1)$$

where j runs for the non-cold DM and the vacuum sector. The four-vector Q_j^{μ} controls the energy exchange between the dark sectors. We assume that Q_j^{μ} is given by [64, 70]

$$Q_j^{\mu} = (Q_j + \delta Q_j) u^{\mu} + f_j^{\mu}, \quad (2.2)$$

in which u^{μ} denotes the four-vector velocity; Q_j denotes the background energy transfer; f_j stands for momentum transfer. Note that from now on we will use the more commonly used notation $Q_j \equiv Q$. In the FLRW background, from eq. (2.1), the conservation equations of the interacting fluids can be written in their well known forms and are,

$$\dot{\rho}_{de} = Q(t), \quad (2.3)$$

$$\dot{\rho}_{dm} + 3H(1 + w_{dm})\rho_{dm} = -Q(t), \quad (2.4)$$

where an overhead dot represents the derivative with respect to the cosmic time; ρ_{de} , ρ_{dm} are respectively the energy density of the vacuum sector and DM; $H = \dot{a}/a$ (a denotes

¹We limit ourselves to non-negative values of the DM equation-of-state to avoid any exotic touch on the DM since the negative values of w_{dm} could raise some unphysical issues, for example, if w_{dm} becomes negative, then it might be difficult to distinguish between the DM and DE sectors from their evolution equations.

the scale factor of the FLRW universe) is the Hubble rate of the FLRW universe which provides an additional constraint on the total energy density of the universe as $3H^2 = 8\pi G(\rho_{de} + \rho_{dm} + \rho_b + \rho_r)$, where the remaining two terms, namely, ρ_b and ρ_r denote the energy density of baryons and radiation, respectively; G is the Newton's gravitational constant; the remaining $Q(t)$ denotes the interaction function that determines the energy flux between the vacuum energy and the non-cold DM. For $Q(t) > 0$, the energy flows from the non-cold DM to the vacuum while for $Q(t) < 0$, the energy flows in the opposite direction, i.e. from the vacuum to the non-cold DM. Here, we consider the best known interaction function [42, 46, 65]:

$$Q(t) = 3H\xi\rho_{de} \quad (2.5)$$

where ξ is the coupling parameter of the interaction function. Following the sign convention in $Q(t)$, one infers that $\xi > 0$ denotes the energy transfer from the non-cold DM to the vacuum sector while $\xi < 0$ denotes the energy flow in the opposite direction (i.e. from the vacuum sector to the non-cold DM). We note that the choice of the interaction function in eq. (2.5) is not phenomenological, on the contrary, this particular choice of the interaction function can be derived from an action formalism [99]. Furthermore, as we will show below, for this interaction function, the evolution of the non-cold DM and the vacuum sector in terms of their energy densities can be found analytically. Now in presence of the above interaction function, the conservation equations, i.e. eq. (2.3) and eq. (2.4) can also be rewritten as

$$\dot{\rho}_{de} + 3H(1 + w_{de}^{\text{eff}})\rho_{de} = 0, \quad (2.6)$$

$$\dot{\rho}_{dm} + 3H(1 + w_{dm}^{\text{eff}})\rho_{dm} = 0, \quad (2.7)$$

where w_{de}^{eff} and w_{dm}^{eff} termed as the effective equation-of-state parameters of the vacuum and the non-cold DM, are given by

$$w_{de}^{\text{eff}} = -1 - \frac{Q(t)}{3H\rho_{de}}, \quad (2.8)$$

$$w_{dm}^{\text{eff}} = w_{dm} + \frac{Q(t)}{3H\rho_{dm}}. \quad (2.9)$$

Notice from eq. (2.8) that for $Q(t) > 0$, w_{de}^{eff} goes beyond the cosmological constant boundary (i.e. $w_{de}^{\text{eff}} < -1$) and this is justified because $Q(t) > 0$ implies an energy transfer from DM to the vacuum sector. While for $Q(t) < 0$, which represents an energy transfer from the vacuum sector to non-cold DM, the effective equation of state of the vacuum energy, i.e. w_{de}^{eff} may behave like a quintessence DE ($w_{de}^{\text{eff}} > -1$). In principle, the exact evolution of the effective equation-of-state parameters can be traced once the evolution of the energy densities of the dark components has been found analytically and this certainly depends on the interaction function, $Q(t)$ itself. While we note that it is always possible to find out the numerical evolution of all the quantities involved regardless of the choice of the interaction function, $Q(t)$. Interestingly, for the present interaction model of eq. (2.5), the energy densities of vacuum and non-cold DM can be expressed analytically:

$$\rho_{de} = \rho_{de,0} a^{3\xi}, \quad (2.10)$$

$$\rho_{dm} = \rho_{dm,0} a^{-3(1+w_{dm})} + \frac{\xi\rho_{de,0}}{\delta} \left[a^{-3(1+w_{dm})} - a^{3\xi} \right], \quad (2.11)$$

where $\rho_{dm,0}$, $\rho_{de,0}$ are respectively the present day values of ρ_{dm} , ρ_{de} and $\delta = 1 + \xi + w_{dm}$. From eq. (2.10) and eq. (2.11) one can quickly see that for $\xi = 0$ (i.e. in absence of any

interaction), one recovers the usual evolution equations for DE and DM. It is essential to mention that the parameter δ should not vanish because for $\delta = 0$, the energy density of the DM sector will diverge at a finite time and this is unphysical. Consequently, the effective equation-of-state of the vacuum sector, i.e. eq. (2.8) becomes trivial leading to $w_{de}^{\text{eff}} = -1 - \xi$ and the effective equation-of-state of the cold DM sector of eq. (2.9) becomes

$$w_{dm}^{\text{eff}} = w_{dm} + \frac{\xi \delta a^{3\delta}}{\xi(1 - a^{3\delta}) + r_0 \delta}, \quad (2.12)$$

where $r_0 = \rho_{dm,0}/\rho_{de,0}$ and δ is defined above. The previous expression for w_{dm}^{eff} offers an effective evolution of the DM sector in presence of the interaction function of eq. (2.5). Note that such effective prescription is subject to the choice of the interaction function.

As already noted, the evolution of the interacting scenario at the background level is influenced by the equation-of-state of DM, the new ingredient of the interacting scenario. Similarly, the equation-of-state of DM, could equally affect the evolution of the interacting scenario at the perturbation level and, consequently, the resulting perturbation equations become different than the perturbation equations for $w_{dm} = 0$. In the following we describe the evolution of the interacting scenario at the level of perturbations.

In a general gauge, the scalar perturbations of the flat FLRW metric are given by [100–102]

$$ds^2 = a^2(\tau) \left[-(1 + 2\phi)d\tau^2 + 2\partial_i B d\tau dx^i + \left\{ (1 - 2\psi)\delta_{ij} + 2\partial_i \partial_j E \right\} dx^i dx^j \right], \quad (2.13)$$

where τ is the conformal time and ϕ , B , ψ , E are the gauge-dependent scalar perturbations quantities. The four-velocity of the fluid $A = \{de, dm\}$ represents either DE or DM, is given by [64, 71]:

$$u_A^\mu = a^{-1}(1 - \phi, \partial^i v_A), \quad (2.14)$$

where v_A is the peculiar velocity potential of the fluid A whose relation with the volume expansion in the Fourier space k is given by $\theta_A = -k^2(v_A + B)$. In the interacting background characterized by the evolution equations in (2.1), a general energy-momentum transfer can be divided relative to the total four-velocity as [64, 71]

$$Q_A^\mu = \tilde{Q}_A w_A^\mu + F_A^\mu, \quad (2.15)$$

where $\tilde{Q}_A = Q_A + \delta Q_A$ and $F_A^\mu = a^{-1}(0, \partial^i f_A)$; here Q_A refers to the background term of the interaction rate, and f_A is a momentum transfer potential. The perturbed energy-momentum transfer four-vector can be decomposed as [64, 71]

$$Q_0^A = -a[Q_A(1 + \phi) + \delta Q_A], \quad (2.16)$$

$$Q_i^A = a\partial_i[Q_A(v + B) + f_A], \quad (2.17)$$

The perturbed energy and momentum balance equations for each fluid A can be derived easily as follows [64, 71]

$$\delta\rho'_A + 3\mathcal{H}(\delta\rho_A + \delta p_A) - 3(\rho_A + p_A)\psi' - k^2(\rho_A + p_A)(v_A + E') = aQ_A\phi + a\delta Q_A, \quad (2.18)$$

$$\delta p_A + [(\rho_A + p_A)(v_A + B)]' + 4\mathcal{H}(\rho_A + p_A)(v_A + B) + (\rho_A + p_A)\phi = aQ_A(v + B) + af_A, \quad (2.19)$$

where the prime denotes the derivative with respect to the conformal time τ , and \mathcal{H} is the conformal Hubble rate. Note that to derive the above equations we have neglected the presence of the anisotropic stress in the energy-momentum tensor [64]. While one can consider the presence of the anisotropic stress in the energy-momentum tensor and as a result, the resulting equation (2.19) will include an extra term due to the anisotropic stress, see ref. [64]. Now introducing the density contrast as $\delta_A = \delta\rho_A/\rho_A$, one can find the evolution equations for the density perturbations and velocity perturbations of the fluid A [64, 71]

$$\begin{aligned} \delta'_A + 3\mathcal{H}(c_{sA}^2 - w_A)\delta_A + 9\mathcal{H}^2(1+w_A)(c_{sA}^2 - c_{aA}^2)\frac{\theta_A}{k^2} + (1+w_A)\theta_A - 3(1+w_A)\psi' \\ + (1+w_A)k^2(B - E') = \frac{a}{\rho_A}(-Q_A\delta_A + \delta Q_A) + \frac{aQ_A}{\rho_A}\left[\phi + 3\mathcal{H}(c_{sA}^2 - c_{aA}^2)\frac{\theta_A}{k^2}\right], \end{aligned} \quad (2.20)$$

$$\theta'_A + \mathcal{H}(1 - 3c_{sA}^2)\theta_A - \frac{c_{sA}^2}{(1+w_A)}k^2\delta_A - k^2\phi = \frac{a}{(1+w_A)\rho_A}\left[(Q_A\theta - k^2f_A) - (1+c_{sA}^2)Q_A\theta_A\right], \quad (2.21)$$

where c_{sA}^2 is the physical sound speed of the fluid A in the rest frame (rf), defined as $c_{sA}^2 = (\delta p_A/\delta\rho_A)|_{\text{rf}}$ and c_{aA}^2 is the adiabatic sound speed of the fluid A defined as $c_{aA}^2 = p'_A/\rho'_A = w_A + w'_A/(\rho'_A/\rho_A)$. These are the general equations of the interacting scenario between DE and DM at the level of perturbations where w_A denotes the equation-of-state parameter of the fluid A . However, when DE is represented by the vacuum energy sector characterized by the equation-of-state -1 , then the evolution equations of the interacting vacuum model at the level of perturbations will be much simplified that we shall describe below. Now, focusing on the general equations, one can notice that for a barotropic fluid, $c_{sA}^2 = c_{aA}^2$, and in addition, if w_A is constant, then $c_{sA}^2 = c_{aA}^2 = w_A$. Now if we consider that DE is an adiabatic fluid, then $c_{s,de}^2 = c_{a,de}^2 = w_{de} < 0$, and hence $c_{s,de}$ becomes imaginary and as a result we encounter with the instabilities in the DE sector. Therefore, in order to fix this issue, one needs to impose $c_{s,de}^2 > 0$ by hand [103] and set a positive value for $c_{s,de}^2$. The natural choice for $c_{s,de}^2$ is 1 as obtained in the scalar field models [64]. This is what is done in the cosmological packages, e.g. CAMB² and others. In our case we have a simple cosmological scenario in which vacuum energy interacts with the DM sector, hence the resulting perturbations equations will be different from the non-interacting cosmological scenarios involving DE and DM as described in [101] for both the synchronous and conformal Newtonian gauges. Here, we work in the synchronous gauge, that means, $\phi = B = 0$, $\psi = \eta$, and $k^2E = -h/2 - 3\eta$ (h, η denote the metric perturbations). Within this present interaction scheme, one can see that the evolution equations at the perturbations level take simple forms. We adopt the methodology already described in refs. [46, 70, 104]. We consider an energy flow parallel to the 4-velocity of the non-cold DM: $Q_{dm}^\mu = -Qu_{dm}^\mu$ [46, 70, 104]. In this case, the DM follows the geodesics [104, 105] which means that in the non-cold DM comoving frame, the vacuum energy perturbations vanish [46, 70, 104]. Subsequently, for the non-cold DM, the evolution equations for the density perturbations (δ_{dm}) and the velocity perturbations (θ_{dm}) for the

²<https://camb.info/>.

Parameter	Prior
$\Omega_b h^2$	[0.005, 0.1]
$\Omega_{dm} h^2$	[0.01, 0.99]
τ	[0.01, 0.8]
n_s	[0.5, 1.5]
$\log[10^{10} A_s]$	[2.4, 4]
$100\theta_{MC}$	[0.5, 10]
w_{dm}	[0, 1]
ξ	[-1, 1]

Table 1. We show the flat prior used on the cosmological parameters varied independently during the statistical analysis.

interaction function of eq. (2.5) can explicitly be recast as

$$\begin{aligned} \delta'_{dm} = & -(1 + w_{dm}) \left(\theta_{dm} + \frac{h'}{2} \right) - 3\mathcal{H}(c_{s,dm}^2 - w_{dm}) \left[\delta_{dm} + 3\mathcal{H}(1 + w_{dm}) \frac{\theta_{dm}}{k^2} \right] \\ & - 3\mathcal{H}\xi \frac{\rho_{de}}{\rho_{dm}} \left[\delta_{dm} - 3\mathcal{H}(c_{s,dm}^2 - w_{dm}) \frac{\theta_{dm}}{k^2} \right], \end{aligned} \quad (2.22)$$

$$\begin{aligned} \theta'_{dm} = & -\mathcal{H}(1 - 3c_{s,dm}^2)\theta_{dm} + \frac{c_{s,dm}^2}{(1 + w_{dm})} k^2 \delta_{dm} \\ & + 3\mathcal{H}\xi \frac{\rho_{de}}{\rho_{dm}} \left[\frac{\theta_{dm} - (1 + c_{s,dm}^2)\theta_{dm}}{1 + w_{dm}} \right] \end{aligned} \quad (2.23)$$

where $c_{s,dm}^2$ is the physical sound speed of non-cold DM in the rest frame. As the DM sector is responsible for the structure formation of the universe, so the sound speed of non-cold DM is assumed to be $c_{s,dm}^2 = 0$. Thus, having the evolution equations of the dark components at the level of background and perturbations, one can now proceed to constrain the interacting scenario using the available cosmological probes.

3 Observational data sets

Here we describe the observational data sets that we used to constrain the interacting scenario.

1. **Cosmic Microwave Background Radiation:** Cosmic Microwave Background (CMB) data from Planck 2018 [1, 106] have been used. In particular, we have used the CMB temperature and polarization angular power spectra *plikTTTEEE+lowl+lowE*.
2. **Lensing:** CMB Lensing reconstruction likelihood from Planck 2018 team [107] has been considered.
3. **Baryon acoustic oscillations:** baryon acoustic oscillations (BAO) distance measurements from various astronomical surveys, such as 6dFGS [108], SDSS-MGS [109], and BOSS DR12 [110] have been considered in the analysis.
4. **Pantheon:** we also include the Pantheon catalogue of the Type Ia Supernovae [111].

Parameters	CMB	CMB+Lensing	CMB+BAO	CMB+Pantheon	CMB+Lensing+BAO+Pantheon
$\Omega_b h^2$	$0.02248^{+0.00017+0.00035}_{-0.00017-0.00033}$	$0.02249^{+0.00016+0.00032}_{-0.00016-0.00032}$	$0.02250^{+0.00016+0.00032}_{-0.00016-0.00031}$	$0.02247^{+0.00016+0.00033}_{-0.00017-0.00032}$	$0.02252^{+0.00015+0.00031}_{-0.00015-0.00030}$
$\Omega_{dm} h^2$	$0.077^{+0.033}_{-0.056} < 0.14$	$0.082^{+0.055}_{-0.036} < 0.14$	$0.104^{+0.023+0.036}_{-0.015-0.040}$	$0.109^{+0.013+0.022}_{-0.011-0.024}$	$0.112^{+0.011+0.020}_{-0.009-0.020}$
$100\theta_{MC}$	$1.0436^{+0.0024+0.0049}_{-0.0036-0.0046}$	$1.0433^{+0.0020+0.0051}_{-0.0037-0.0043}$	$1.0419^{+0.0008+0.0024}_{-0.0014-0.0021}$	$1.04147^{+0.00065+0.0015}_{-0.00076-0.0014}$	$1.04137^{+0.00054+0.0012}_{-0.00066-0.0012}$
τ	$0.0534^{+0.0075+0.015}_{-0.0074-0.015}$	$0.0526^{+0.0072+0.015}_{-0.0072-0.014}$	$0.0541^{+0.0077+0.016}_{-0.0075-0.015}$	$0.0533^{+0.0075+0.015}_{-0.0074-0.015}$	$0.0539^{+0.0070+0.015}_{-0.0071-0.014}$
n_s	$0.9628^{+0.0046+0.0093}_{-0.0046-0.0088}$	$0.9636^{+0.0042+0.0082}_{-0.0042-0.0082}$	$0.9637^{+0.0042+0.0083}_{-0.0042-0.0083}$	$0.9623^{+0.0044+0.0088}_{-0.0044-0.0089}$	$0.9646^{+0.0039+0.0078}_{-0.0039-0.0078}$
$\ln(10^{10} A_s)$	$3.046^{+0.015+0.030}_{-0.016-0.030}$	$3.043^{+0.014+0.029}_{-0.014-0.028}$	$3.046^{+0.016+0.032}_{-0.016-0.031}$	$3.046^{+0.015+0.031}_{-0.015-0.030}$	$3.044^{+0.014+0.028}_{-0.014-0.027}$
w_{dm}	$0.00122^{+0.00053}_{-0.00097} < 0.0025$	$0.00112^{+0.00047}_{-0.00091} < 0.0023$	$0.00115^{+0.00045}_{-0.00098} < 0.0025$	$0.00123^{+0.00052}_{-0.00099} < 0.0031$	$0.00108^{+0.00040}_{-0.00096} < 0.0023$
ξ	$0.11^{+0.14+0.17}_{-0.07-0.20}$	$0.10^{+0.14+0.17}_{-0.08-0.19}$	$0.048^{+0.053+0.12}_{-0.064-0.11}$	$0.036^{+0.036+0.072}_{-0.036-0.072}$	$0.025^{+0.032+0.063}_{-0.032-0.063}$
Ω_m	$0.21^{+0.07+0.19}_{-0.14-0.16}$	$0.22^{+0.08+0.18}_{-0.14-0.17}$	$0.270^{+0.057+0.10}_{-0.046-0.11}$	$0.285^{+0.033+0.066}_{-0.032-0.066}$	$0.289^{+0.028+0.055}_{-0.028-0.055}$
σ_8	$1.40^{+0.25+1.4}_{-0.80-0.9}$	$1.32^{+0.18+1.5}_{-0.73-0.9}$	$0.95^{+0.08+0.36}_{-0.20-0.28}$	$0.898^{+0.062+0.17}_{-0.097-0.16}$	$0.869^{+0.050+0.14}_{-0.082-0.13}$
H_0 [Km/s/Mpc]	$70.6^{+4.3+5.2}_{-2.4-6.0}$	$70.3^{+4.3+5.4}_{-2.8-5.6}$	$68.8^{+1.3+3.0}_{-1.6-2.7}$	$68.2^{+1.0+2.1}_{-1.0-2.1}$	$68.33^{+0.82+1.6}_{-0.81-1.5}$
S_8	$1.01^{+0.08+0.41}_{-0.23-0.27}$	$0.98^{+0.06+0.40}_{-0.21-0.24}$	$0.880^{+0.032+0.13}_{-0.071-0.11}$	$0.869^{+0.028+0.070}_{-0.038-0.066}$	$0.849^{+0.022+0.056}_{-0.031-0.052}$
r_{drag} [Mpc]	$146.80^{+0.33+0.64}_{-0.33-0.65}$	$146.91^{+0.29+0.56}_{-0.29-0.57}$	$146.90^{+0.31+0.61}_{-0.31-0.63}$	$146.78^{+0.33+0.64}_{-0.33-0.65}$	$146.98^{+0.27+0.53}_{-0.27-0.53}$
$\Omega_m h^2$	$0.100^{+0.037+0.071}_{-0.053-0.068}$	$0.105^{+0.055+0.067}_{-0.036-0.070}$	$0.127^{+0.023+0.037}_{-0.015-0.040}$	$0.132^{+0.013+0.022}_{-0.011-0.024}$	$0.135^{+0.011+0.020}_{-0.0092-0.020}$

Table 2. 68% and 95% CL constraints on the Λ CDM scenario are presented for CMB, CMB+Lensing, CMB+BAO, CMB+Pantheon and CMB+Lensing+BAO+Pantheon data sets.

Parameters	CMB	CMB+BAO	CMB+Pantheon
$\Omega_b h^2$	$0.02233^{+0.00015+0.00030}_{-0.00015-0.00029}$	$0.02233^{+0.00014+0.00028}_{-0.00014-0.00029}$	$0.02233^{+0.00015+0.00029}_{-0.00015-0.00029}$
$\Omega_{dm} h^2$	$0.1169^{+0.0037+0.0054}_{-0.0020-0.0065}$	$0.1186^{+0.0011+0.0022}_{-0.0011-0.0022}$	$0.1178^{+0.0022+0.0038}_{-0.0017-0.0042}$
$100\theta_{MC}$	$1.04111^{+0.00035+0.00075}_{-0.00039-0.00068}$	$1.04101^{+0.00029+0.00059}_{-0.00029-0.00058}$	$1.04106^{+0.00032+0.00062}_{-0.00032-0.00063}$
τ	$0.0551^{+0.0076+0.016}_{-0.0075-0.015}$	$0.0546^{+0.0073+0.016}_{-0.0081-0.015}$	$0.0547^{+0.0076+0.016}_{-0.0076-0.015}$
n_s	$0.9674^{+0.0048+0.0098}_{-0.0048-0.0092}$	$0.9658^{+0.0038+0.0076}_{-0.0039-0.0075}$	$0.9665^{+0.0042+0.0081}_{-0.0042-0.0083}$
$\ln(10^{10} A_s)$	$3.048^{+0.016+0.033}_{-0.016-0.031}$	$3.046^{+0.016+0.032}_{-0.016-0.031}$	$3.046^{+0.016+0.032}_{-0.016-0.032}$
w_{dm}	$< 0.0013 < 0.0030$	$< 0.00072 < 0.0012$	$< 0.0010 < 0.0020$
Ω_m	$0.290^{+0.027+0.038}_{-0.014-0.047}$	$0.3030^{+0.0082+0.015}_{-0.0075-0.016}$	$0.297^{+0.017+0.027}_{-0.012-0.030}$
σ_8	$0.835^{+0.012+0.045}_{-0.026-0.035}$	$0.824^{+0.010+0.024}_{-0.014-0.022}$	$0.829^{+0.012+0.032}_{-0.018-0.028}$
H_0	$69.5^{+1.0+4.3}_{-2.4-3.2}$	$68.36^{+0.58+1.3}_{-0.70-1.2}$	$68.88^{+0.90+2.6}_{-1.48-2.2}$
S_8	$0.821^{+0.020+0.036}_{-0.018-0.039}$	$0.828^{+0.013+0.026}_{-0.013-0.025}$	$0.825^{+0.016+0.031}_{-0.016-0.031}$
r_{drag}	$147.17^{+0.31+0.62}_{-0.31-0.61}$	$147.10^{+0.26+0.49}_{-0.26-0.51}$	$147.13^{+0.28+0.56}_{-0.28-0.56}$
$\Omega_m h^2$	$0.1398^{+0.0037+0.0053}_{-0.0019-0.0065}$	$0.1416^{+0.0011+0.0021}_{-0.0011-0.0022}$	$0.1408^{+0.0022+0.0037}_{-0.0016-0.0041}$

Table 3. Summary of the observational constraints at 68% and 95% CL on the first simplest extension of the Λ CDM cosmological model (Non-interacting scenario 1) where the dark energy equation of state, $w_{de} = -1$, and the CDM part has been replaced by the non-cold DM characterized by w_{dm} using three important data sets, namely, CMB, CMB+BAO, and CMB+Pantheon.

To constrain the interacting scenario, we make use of the modified `CosmoMC` package [112]. This package is freely available and supports Planck 2018 likelihood [106]. Additionally, `CosmoMC` package is equipped with convergence diagnostic by Gelman and Rubin [113]. In table 1 we display the priors on the free parameters of this model, that are, the baryon density $\Omega_b h^2$, the dark matter density assumed to be non-cold instead of cold $\Omega_{dm} h^2$, the optical depth τ , the spectral index and the amplitude of the primordial scalar perturbations n_s and A_s , the ratio of the sound horizon to the angular diameter distance θ_{MC} , the equation of state of the non-cold DM w_{dm} , and the coupling parameter of the interaction function $Q(t)$ between the non-cold DM and the vacuum ξ .

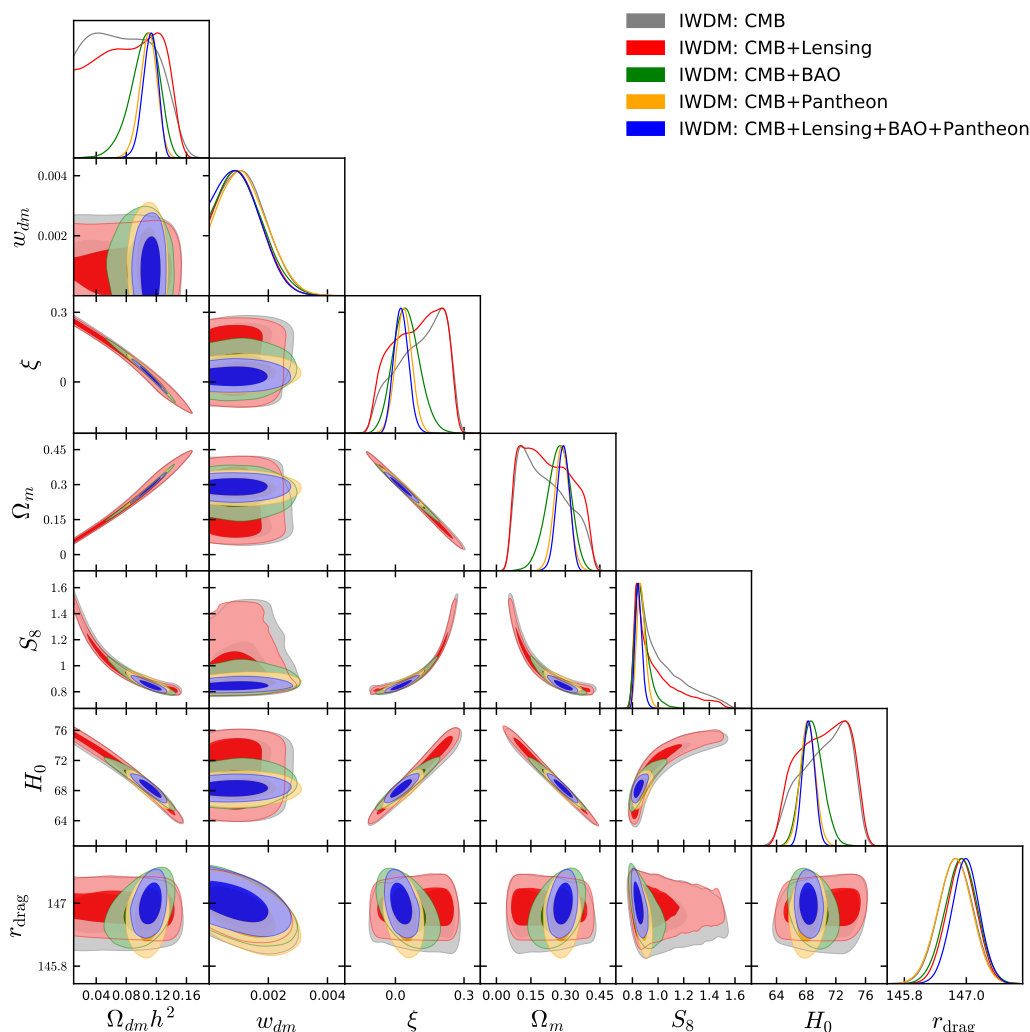


Figure 1. We show the one dimensional posterior distributions and two dimensional joint contours for the most relevant parameters of the **IWDM** scenario using several observational data sets, namely, CMB, CMB+Lensing, CMB+BAO, CMB+Pantheon and CMB+Lensing+BAO+Pantheon.

4 Results

In table 2 and figure 1 we summarize the constraints on the interacting scenario for various cosmological probes, namely, CMB, CMB+Lensing, CMB+BAO, CMB+Lensing+BAO+Pantheon. The two key free parameters of this scenario are the coupling parameter ξ and the eos of DM, w_{dm} .

We begin by discussing the constraints on the interacting scenario for CMB alone and then gradually investigate the effects of other cosmological probes as they are added to CMB. For CMB alone, we find an indication for a non-cold DM at more than 68% CL ($w_{dm} = 0.00122^{+0.00053}_{-0.00097}$ at 68% CL). This supports the decay of the non-cold DM in vacuum (i.e. an energy transfer from non-cold DM to vacuum) because we also notice an indication for a non-zero coupling at more than 68% CL ($\xi = 0.11^{+0.14}_{-0.07}$ at 68% CL). Due to the transfer of energy from the non-cold DM to the vacuum, we detect a smaller amount of DM which

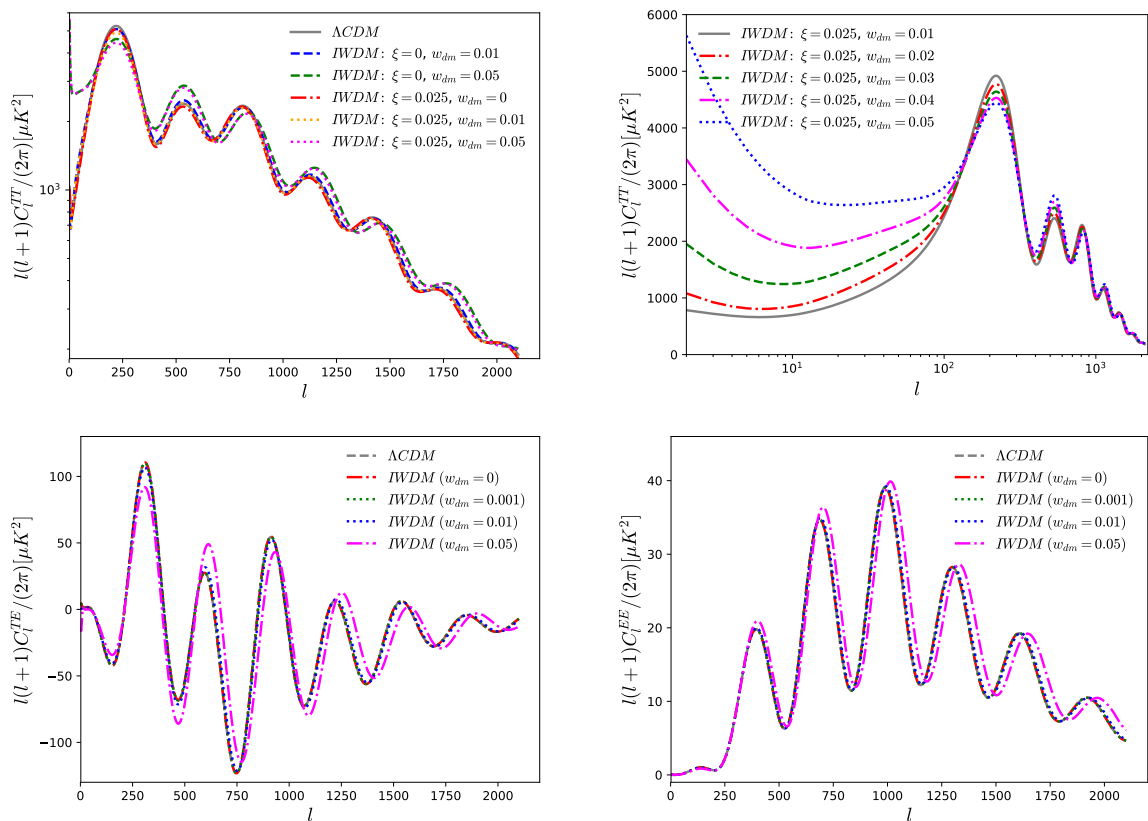


Figure 2. We present the CMB TT, TE, and EE spectra for the **IWDM** scenario for various values of the DM equation-of-state parameter w_{dm} in comparison with the Λ CDM scenario. Regarding the CMB TT spectra, for the upper right panel, we have used the logarithmic scale to more accurately show the effects in the low multipole regime, that are not so clear in the upper left panel, where we instead prefer a linear scale.

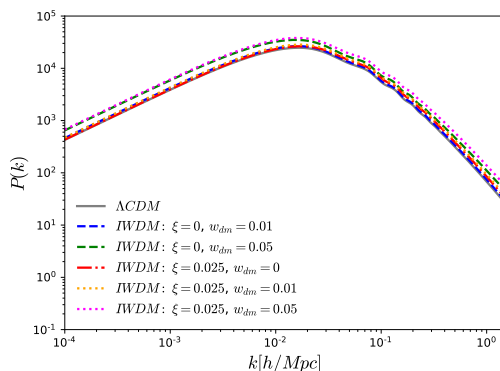


Figure 3. We show the matter power spectra for the **IWDM** scenario for various values of the DM equation-of-state parameter w_{dm} in comparison with the Λ CDM scenario.

is clearly reflected by the estimated value of the matter density parameter $\Omega_m = 0.21^{+0.07}_{-0.14}$ at 68% CL (for CMB alone) compared to the Λ CDM value obtained from Planck [1]. It

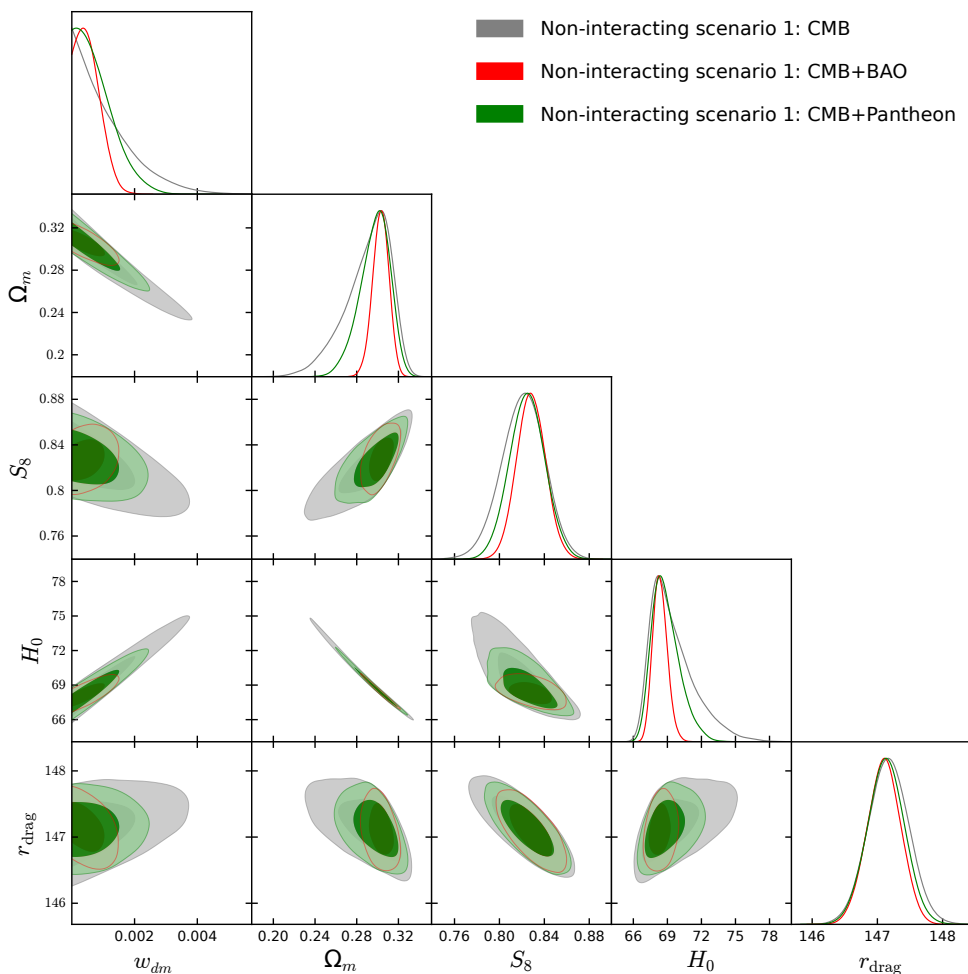


Figure 4. One dimensional posterior distributions and two dimensional joint contours for the most relevant parameters of the Non-interacting scenario 1 using three important data sets, namely, CMB, CMB+BAO, CMB+Pantheon.

is worth noting that given only an upper limit on $\Omega_{dm}h^2$ in the CMB only case due to the interaction, and given the strong correlation with many parameters of the model (see figure 1), this produces highly non-Gaussian posteriors for all of them. Furthermore, this results in a higher value of the Hubble constant ($H_0 = 70.6^{+4.3}_{-2.4}$ km/s/Mpc at 68% CL for CMB alone) than the H_0 value obtained by Planck alone (within the Λ CDM paradigm) [1] due to the anti-correlation existing between H_0 and Ω_m , see figure 1. Actually, the positivity of the coupling parameter (i.e. $\xi > 0$) implies an energy flow from the non-cold DM to the vacuum sector which produces as effect a lower value of Ω_m and, consequently, a higher value of H_0 is returned. We also notice a very large error bars on H_0 due to an increase in the volume of the parameter space. As a result, the H_0 constraint is significantly relaxed due to such large error bars, and as a result, the 5σ tension on H_0 between Planck (within the Λ CDM paradigm) [1] and the SH0ES (Supernovae and H_0 for the Equation of State of dark energy) collaboration ($H_0 = 73.04 \pm 1.04$ km/s/Mpc) [114] is reduced to 1σ for this case. It should be noted that this alleviation of the H_0 tension depends on the shift in the mean value

Parameters	CMB	CMB+BAO	CMB+Pantheon
$\Omega_b h^2$	$0.02236^{+0.00015+0.00030}_{-0.00015-0.00030}$	$0.02232^{+0.00015+0.00029}_{-0.00015-0.00030}$	$0.02233^{+0.00015+0.00029}_{-0.00015-0.00029}$
$\Omega_{dm} h^2$	$0.1166^{+0.0037+0.0055}_{-0.0020-0.0066}$	$0.1176^{+0.0025+0.0040}_{-0.0016-0.0045}$	$0.1176^{+0.0032+0.0048}_{-0.0018-0.0057}$
$100\theta_{MC}$	$1.04115^{+0.00035+0.00075}_{-0.00039-0.00069}$	$1.04108^{+0.00032+0.00064}_{-0.00032-0.00064}$	$1.04107^{+0.00034+0.00070}_{-0.00033-0.00065}$
τ	$0.0546^{+0.0077+0.016}_{-0.0076-0.015}$	$0.0548^{+0.0075+0.016}_{-0.0075-0.015}$	$0.0548^{+0.0073+0.016}_{-0.0078-0.015}$
n_s	$0.9679^{+0.0048+0.0097}_{-0.0048-0.0092}$	$0.9666^{+0.0043+0.0083}_{-0.0043-0.0083}$	$0.9665^{+0.0046+0.0093}_{-0.0046-0.0090}$
$\ln(10^{10} A_s)$	$3.046^{+0.016+0.033}_{-0.016-0.032}$	$3.047^{+0.016+0.032}_{-0.016-0.032}$	$3.047^{+0.016+0.032}_{-0.016-0.031}$
w_{dm}	$< 0.0013 < 0.0030$	$< 0.0011 < 0.0022$	$< 0.0011 < 0.0025$
w_{de}	$-1.52^{+0.18+0.48}_{-0.30-0.43}$	$-0.966^{+0.073+0.15}_{-0.072-0.14}$	$-1.004^{+0.040+0.088}_{-0.046-0.081}$
Ω_m	$0.186^{+0.016+0.089}_{-0.050-0.060}$	$0.305^{+0.012+0.022}_{-0.011-0.023}$	$0.294^{+0.017+0.028}_{-0.012-0.031}$
σ_8	$0.990^{+0.092+0.12}_{-0.042-0.15}$	$0.820^{+0.019+0.038}_{-0.019-0.037}$	$0.832^{+0.015+0.034}_{-0.018-0.032}$
H_0	88^{+12+14}_{-5-17}	$67.9^{+1.4+2.9}_{-1.6-2.9}$	$69.1^{+1.1+2.7}_{-1.4-2.5}$
S_8	$0.769^{+0.021+0.058}_{-0.034-0.050}$	$0.827^{+0.014+0.027}_{-0.013-0.026}$	$0.824^{+0.017+0.032}_{-0.017-0.034}$
r_{drag}	$147.20^{+0.32+0.63}_{-0.31-0.60}$	$147.14^{+0.29+0.55}_{-0.29-0.56}$	$147.13^{+0.30+0.61}_{-0.31-0.61}$
$\Omega_m h^2$	$0.1396^{+0.0037+0.0054}_{-0.0019-0.0066}$	$0.1405^{+0.0025+0.0040}_{-0.0016-0.0045}$	$0.1405^{+0.0032+0.0047}_{-0.0017-0.0057}$

Table 4. Summary of the observational constraints at 68% and 95% CL on the second extension of the Λ CDM cosmological model (Non-interacting scenario 2) where the dark energy equation of state, w_{de} , has been kept free and the CDM part has been replaced by the non-cold DM characterized by w_{dm} using three important data sets, namely, CMB, CMB+BAO, and CMB+Pantheon.

of H_0 and mainly on the increased error bars, caused by the increase in the volume of the parameter space. The equation-of-state of the non-cold DM, w_{dm} , plays no role in alleviating the H_0 tension, it is the interaction between the dark components. As seen from figure 1, no correlation (anti-correlation) is observed between H_0 and w_{dm} unlike the existing correlation (anti-correlation) between H_0 and ξ (Ω_m).

The inclusion of CMB Lensing to the CMB temperature and polarization data (i.e. CMB+Lensing) offers results almost similar to those of the CMB alone. For example, also here we obtain an upper limit on $\Omega_{dm} h^2$ because of the interaction, which is reflected on highly non-Gaussian posteriors for the parameters correlated with it. This analysis also indicates an existence of non-cold dark matter at more than 68% CL ($w_{dm} = 0.00112^{+0.00047}_{-0.00091}$ at 68% CL) and of a non-zero coupling in the dark sector at more than 68% CL ($\xi = 0.10^{+0.14}_{-0.08}$ at 68% CL), alleviating the H_0 tension within 1σ . Similar to the CMB alone case as described above, the high value of H_0 is due to the interaction between the non-cold DM and the vacuum sector but not to the equation-of-state in the non-cold DM, w_{dm} . Again we note that the alleviation on the H_0 tension is driven mainly by its very high error bars caused by an increase in the volume of the parameter space rather than the actual shift in the mean value of H_0 . Analogous to the CMB alone case, here too, the equation-of-state of the non-cold DM, w_{dm} , plays no role in alleviating the H_0 tension, but this is due to the interaction between the dark components.

When BAO data are added to CMB, we observe some changes in the constraints. In particular, we observe that the mean values of the cosmological parameters are shifted towards the Λ CDM values, while an indication for a non-cold DM is still retained at more than 68% CL ($w_{dm} = 0.00115^{+0.00045}_{-0.00098}$ at 68% CL for CMB+BAO). Unlike the previous two cases, here the coupling parameter is back in agreement with $\xi = 0$ within 1σ and the mean

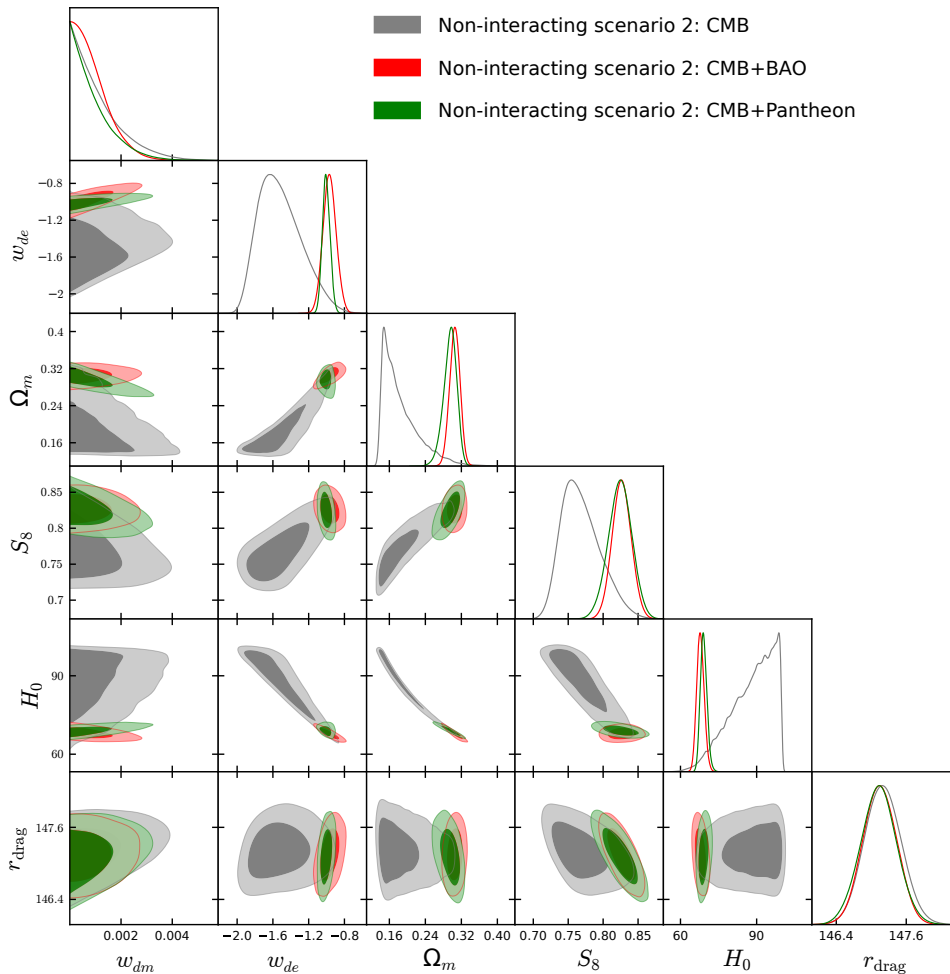


Figure 5. One dimensional posterior distributions and two dimensional joint contours for the most relevant parameters of the Non-interacting scenario 2 using three important data sets, namely, CMB, CMB+BAO, CMB+Pantheon.

value of the coupling parameter is decreased to $\xi = 0.048^{+0.053}_{-0.064}$ at 68% CL. Hence, we find no strong evidence of $\xi \neq 0$ for this dataset since both positive and negative values are equally allowed in 1 standard deviation. Due to the positive correlation between ξ and H_0 , the reduction in the mean value in ξ implies a reduction in the mean value of $H_0 = 68.8^{+1.3}_{-1.6}$ km/s/Mpc at 68% CL and consequently we find a higher value of $\Omega_m = 0.270^{+0.057}_{-0.046}$ than the previous two constraints obtained in CMB only and CMB+Lensing cases. We note a shift in the mean value of H_0 away from the SH0ES measure [114]. Finally, we note that the H_0 tension between Planck (within the Λ CDM paradigm) [1] and the SH0ES collaboration [114] is however reduced to 2.6σ and this reduction is mainly influenced by the large error bars in H_0 , not due to the presence of w_{dm} .

The inclusion of Pantheon to the CMB shifts the mean values of the parameters to the Λ CDM values but the indication for a non-cold DM ($w_{dm} \neq 0$ at more than 68% CL) is kept: $w_{dm} = 0.00123^{+0.00052}_{-0.00099}$ at 68% CL. Similar to the CMB+BAO analysis, we find no clear evidence of a non-zero coupling. The correlation between ξ and H_0 remains the same as

observed in the previous cases and also the matter density parameter increases. Finally, we note that the H_0 tension between Planck (within the Λ CDM paradigm) [1] and the SH0ES collaboration [114] is reduced to 3.4σ for this dataset combination. The reduction in the H_0 tension in this case is not comparable to the CMB and CMB+Lensing analyses since we notice (i) a shift in the mean value of H_0 away from the SH0ES estimate [114], and (ii) the error bars on H_0 are stronger than both CMB and CMB+Lensing analyses. Similar to the earlier cases, we confirm that w_{dm} does not affect H_0 .

For the most complete dataset, i.e. CMB+Lensing+BAO+Pantheon, we get the most stringent constraints on the interacting scenario. We still find a non-zero value of the DM eos at more than 68% CL ($w_{dm} = 0.00108_{-0.00096}^{+0.00040}$ at 68% CL). Similarly to the previous case (i.e. CMB+Pantheon), we find no evidence for $\xi \neq 0$ and the mean value of ξ is further reduced with respect to CMB+Pantheon. The Hubble constant turns out to be $H_0 = 68.33_{-0.81}^{+0.82}$ km/s/Mpc at 68% CL, which in any case reduces the 5σ tension between Planck (within the Λ CDM paradigm) [1] and the SH0ES collaboration [114] down to 3.6σ . We note that the slight increase in the mean value of H_0 with respect to the Planck's estimate within the Λ CDM paradigm [1] is solely responsible for the energy flow from the non-cold DM sector to the vacuum sector (i.e. $\xi > 0$) since, due to the existing anti-correlation between H_0 and Ω_m as explained previously, we have a slight increase in the mean value of H_0 . However, the dark matter equation-of-state, w_{dm} , does not affect H_0 in any way.

We also analyze the impacts of the **IWDM** scenario on the CMB power spectra and matter power spectra for different values of w_{dm} as well as the coupling parameter ξ . In figure 2 we plot the CMB TT, TE, and EE spectra by setting the cosmological parameters to the best fit values of the parameters obtained from CMB+Lensing+BAO+Pantheon data analysis, with a fixed value of $\xi = 0.025$.³ We then consider different values w_{dm} , starting from $w_{dm} = 0$, i.e. the usual interacting cold DM scenario, up to 0.05 in different combinations, together with the spectra representing the non-interacting Λ CDM cosmological model as the reference scenario. Focusing on the CMB TT spectra, we see that the value of the equation-of-state parameter of the non-cold DM, i.e. w_{dm} , affects the entire CMB spectrum and this effect increases for enhancement of w_{dm} . In particular, as w_{dm} increases, the amplitude of the first acoustic peak, and in general, the amplitude of the odd peaks, in the CMB TT and TE spectra is suppressed with respect to the non-interacting standard Λ CDM model (solid grey curve) and the interacting cold DM (red dashed curve). However, the amplitude of the second acoustic peak, and in general, the amplitude of the even peaks, increases for increasing values of w_{dm} . In other words, we see changes in the ratio of odd and even numbered peak heights of the TT (and TE) power spectrum. This effect resembles the one obtained by decreasing the baryon density, because both of them are weakening the gravity: the asymmetry of the oscillations is altered, and a reduction of the compression peaks (odd) compared to the rarefaction peaks (even) is observed. We also see that the amplitude of the ISW plateau in the low multipole regime ($\ell \leq 100$) of the CMB TT spectrum increases significantly by enhancing w_{dm} with respect to the Λ CDM and interacting cold DM scenarios, indicating a dominance of the DE component. Finally, in figure 3 we show the increase of the amplitude of the matter power spectrum as the w_{dm} value increases.

³Note that **IWDM** with $\xi = 0$ and $w_{dm} = 0.01$ or 0.05 as kept in the upper left plot of figure 2 refers to the non-interacting scenario.

4.1 IWDM and the non-interacting scenarios

After presenting the results on the **IWDM** scenario, we now proceed to investigate the physics of the non-interacting scenarios, that means we aim to investigate the dark sectors physics when Q is absent in the picture. We consider two very well known extensions of the standard Λ CDM cosmological scenario, namely, (i) the cosmological scenario with $w_{de} = -1$ being the dark energy equation of state but the DM equation-of-state w_{dm} is constant (labeled as Non-interacting scenario 1), and (ii) the cosmological scenario where the dark energy equation-of-state w_{de} and the DM equation-of-state w_{dm} are constants (labeled as Non-interacting scenario 2). We note that Non-interacting scenario 1 has “seven free parameters” $\{\Omega_b h^2, \Omega_{dm} h^2, \tau, n_s \log[10^{10} A_s], 100\theta_{MC}, w_{dm}\}$ and the Non-interacting scenario 2 has “eight free parameters” $\{\Omega_b h^2, \Omega_{dm} h^2, \tau, n_s \log[10^{10} A_s], 100\theta_{MC}, w_{dm}, w_{de}\}$. We constrained both the scenarios considering three effective data sets, namely CMB, CMB+BAO and CMB+Pantheon⁴ considering the flat priors on the parameters $\{\Omega_b h^2, \Omega_{dm} h^2, \tau, n_s \log[10^{10} A_s], 100\theta_{MC}, w_{dm}\}$ as in table 1 while we use $[-3, 0]$ as the flat prior for w_{de} . We have considered the well known perturbations equations as described in ref. [101].

In table 3 and table 4, we present the observational constraints on these two scenarios for CMB, CMB+BAO and CMB+Pantheon data sets. And in figure 4 and figure 5 we show the corresponding graphical variations. From table 3, we notice that for all three data sets, w_{dm} does not exhibit any non-null behaviour in the Non-interacting scenario 1 and it is actually consistent with $w_{dm} = 0$ but interestingly we observe from figure 4 that w_{dm} is correlated with most of the parameters. However, we find that the Hubble constant takes a relatively higher value compared to what we obtain in the Λ CDM paradigm by Planck 2018 collaboration [1]. This is mainly due to the existing correlation with w_{dm} and H_0 as seen in figure 4. For Non-interacting scenario 2, we also do not find any evidence of $w_{dm} \neq 0$, and all three data sets indicate that w_{dm} is consistent to zero. On the other hand, the dark energy equation of state crosses the phantom divide line $w_{de} = -1.52_{-0.30}^{+0.18}$ at 68% CL in agreement with the usual w CDM scenario [115]. When the external probes, namely, BAO and Pantheon are independently added to CMB, the cosmological constant is restored. This effectively means that this extended model has similar features as in the usual w CDM model. Contrary to this, if we allow for an interaction between the dark sectors, we observe only a very weak evidence (at more than 68% CL) of non-cold DM, as indicated by all the observational data sets (see table 2). This observation is noteworthy because, based on the current observational data, the presence of an interaction between DE and non-cold DM suggests that the non-cold DM sector may not be entirely excluded, even though the evidence for such a sector remains weak.

4.2 Bayesian evidence

The Bayesian evidence plays a very crucial role to understand the fitness of a cosmological scenario with respect to a given set of cosmological probes and a given reference model. As the **IWDM** is a new cosmological scenario, therefore, it is essential to understand the soundness of the model. Concerning the reference model, the Λ CDM model is undoubtedly the best choice for this purpose even though one can set a different reference model. In this work we have considered the Λ CDM model as the reference model and performed the Bayesian

⁴While it is possible to perform various combinations as presented in table 2, however the intrinsic nature of the cosmological scenarios does not change significantly, which does not indicate anything particularly appealing.

Dataset	$\ln B_{ij}$
CMB	-2.5
CMB+Lensing	-3.3
CMB+BAO	-4.2
CMB+Pantheon	-4.9
CMB+Lensing+BAO+Pantheon	-5.1

Table 5. Summary of the $\ln B_{ij}$ values (i refers to **IWDM** and j refers to the reference model Λ CDM) for all the data sets. The negative value in $\ln B_{ij}$ indicates that the data set prefers Λ CDM over the **IWDM** scenario.

evidence analysis (see [116] for more details on the methodology). We have used the MCEvidence package [117, 118] to compute the Bayes factor $\ln B_{ij}$ of the **IWDM** scenario compared to the Λ CDM scenario for all the data sets (see table 5) where the negative value of $\ln B_{ij}$ indicates that data prefer the Λ CDM model over the **IWDM** model. From the table 5, we find that Λ CDM remains preferred over the interacting scenario proposed in this work. This is due to the extra free parameters in the **IWDM** scenario compared to the Λ CDM model, which are complicating the model and are therefore disfavored by Occam’s razor principle. Note in fact that **IWDM** has two extra free parameters than the 6-parameter Λ CDM model.

5 Summary and conclusions

Cosmological scenarios in which DM and DE can exchange energies with each other have been found very appealing both from a theoretical and observational perspective. Such scenarios are generalized versions of non-interacting cosmologies and offer a rich phenomenology of the dark sector. In most of the interacting scenarios between DM and DE (even in the non-interacting DE-DM scenarios), the equation of state of DM is assumed to be zero, which means that the DM sector is assumed to be cold or pressure-less. While the assumption of a pressure-less DM is a very natural choice that is motivated by the formation of structure of our universe on the large scale and the marvellous success of the standard Λ CDM cosmology, nevertheless, let us recall that the intrinsic nature of DM remained mysterious after a series of astronomical tests. Furthermore, since the interaction between DE and DM involves an energy transfer between them, it could therefore be argued that the abundances of the pressure-less DM in the universe sector could be the result of a decaying DM with a non-vanishing equation-of-state in DE during the evolution of the universe. The statement – “whether one should consider a pressure-less DM or a non-cold DM” (alternatively, whether there is a non-cold DM species in the universe sector) can continue to be debated, however, with the increasing sensitivity in experimental data, probably the best approach is to consider a free-to-vary equation-of-state of the DM and let observational data decide the most preferable scenario.

Following this, in this article, we have considered an interacting (non-cold) DM scenario (labeled as “**IWDM**”) with the vacuum sector through a very well known interaction function $Q(t) = 3H\xi\rho_{de}$. The vacuum sector has the equation-of-state $w_{de} = -1$ and the (non-cold) DM has a constant equation-of-state w_{dm} which is free-to-vary in $[0, 1]$. Considering the evolution of the **IWDM** scenario at both background and perturbation levels, we constrained the scenario using a set of cosmological probes, such as CMB from Planck 2018, CMB+Lensing, CMB+BAO, CMB+Pantheon and CMB+Lensing+BAO+Pantheon (see section 3 for the

details of the data sets). The results are summarized in table 2 and figure 1. We find that w_{dm} remains non-zero at more than 68% CL for all observational data sets. This means that the existence of a non-cold DM (albeit slight) in the universe sector cannot be discarded. The coupling parameter ξ remains non-zero at more than 68% CL for CMB and CMB+Lensing which signals an energy transfer from DM to DE. However, for the remaining data sets, i.e. for CMB+BAO, CMB+Pantheon and CMB+Lensing+BAO+Pantheon, we find no strong evidence for $\xi \neq 0$. We also find that the existing 5σ tension on the Hubble constant between Planck (within the Λ CDM paradigm) [1] and the SH0ES collaboration [114] is reduced by many standard deviations for the data sets used. We found that in this interacting scenario, this tension on H_0 is reduced down to 0.6σ (for CMB and CMB+Lensing), 2.5σ (CMB+BAO), 3.3σ (CMB+Pantheon) and 3.6σ (CMB+Lensing+BAO+Pantheon). And this reduction is mainly due to: (i) the energy flow from the non-cold DM to the vacuum sector, and (ii) the large error bars on H_0 as a result of the increase in the volume of the parameter space. The inclusion of the dark matter equation-of-state does not affect H_0 and most of the constraints, see figure 1.

Additionally, we plot the CMB TT, TE, and EE spectra (figure 2) and matter power spectra (figure 3) for the **IWDM** scenario with the goal to understand how differently the values of w_{dm} affect them. We find significant evidence in CMB TT spectra showing that with the increase of w_{dm} , the amplitude of the odd acoustic peaks in the CMB TT and TE spectra is suppressed and the amplitude of the even acoustic peaks increases, relative to the non-interacting Λ CDM and the interacting cold DM scenarios. Differences are also observed in the low multipole regime ($\ell \leq 100$) of the CMB TT spectrum for increasing values of w_{dm} , affecting the ISW plateau. In the matter power spectra, the effects of the non-cold DM are also captured where we see that the amplitude of the matter power spectrum increases as w_{dm} increases.

On another side, we have compared the **IWDM** scenario with two non-interacting scenarios which are the minimal extensions of the Λ CDM cosmological model aiming to distinguish between the interacting and non-interacting scenarios in the light of the non-cold DM component. In tables 3 and 4 we have summarized the constraints on these non-interacting scenarios considering three important data sets, namely CMB, CMB+BAO and CMB+Pantheon. However, our results indicate that there is no evidence of $w_{dm} \neq 0$ for any of the data sets. This is in contrast to the **IWDM** scenario, where there is still a suggestion of $w_{dm} \neq 0$, albeit very weak, based on the data. According to the Bayesian evidence analysis (table 5), the Λ CDM model still remains the favored cosmological scenario. However, it is important to note that the **IWDM** scenario introduces two additional free parameters compared to the Λ CDM model, so it is disfavored by the Occam's razor principle. This is one of the reasons why the Λ CDM model is consistently preferred over **IWDM** in our comparisons.

Based on the current outcomes, it could be argued that setting the equation-of-state of DM to zero could make the underlying cosmological scenario simple but at the expense of some important information loss regarding the dark sector. The cosmology with non-cold DM may be more exciting as we note that such scenarios have not received much attention without compelling reasons. We also add that the evolution of this interacting scenario beyond the linear perturbation regime could be an interesting investigation. We trust that with the emergence of potential cosmological probes in the near future more exciting news on the non-cold DM cosmologies are yet to appear. We anticipate that this could herald the beginning of a new era in cosmology.

Acknowledgments

The authors sincerely thank the referee for his/her important comments that helped us to improve the article considerably. SP acknowledges the financial support from the Department of Science and Technology (DST), Govt. of India under the Scheme “Fund for Improvement of S&T Infrastructure (FIST)” [File No. SR/FST/MS-I/2019/41]. WY was supported by the National Natural Science Foundation of China under Grants No. 12175096 and No. 11705079. EDV is supported by a Royal Society Dorothy Hodgkin Research Fellowship. This article is based upon work from COST Action CA21136 Addressing observational tensions in cosmology with systematics and fundamental physics (CosmoVerse) supported by COST (European Cooperation in Science and Technology). D.F.M. acknowledges support from the Research Council of Norway and UNINETT Sigma2 — the National Infrastructure for High Performance Computing and Data Storage in Norway.

References

- [1] PLANCK collaboration, *Planck 2018 results. VI. Cosmological parameters*, *Astron. Astrophys.* **641** (2020) A6 [Erratum *ibid.* **652** (2021) C4] [[arXiv:1807.06209](#)] [[INSPIRE](#)].
- [2] E. Di Valentino et al., *In the realm of the Hubble tension — a review of solutions*, *Class. Quant. Grav.* **38** (2021) 153001 [[arXiv:2103.01183](#)] [[INSPIRE](#)].
- [3] L. Perivolaropoulos and F. Skara, *Challenges for Λ CDM: an update*, *New Astron. Rev.* **95** (2022) 101659 [[arXiv:2105.05208](#)] [[INSPIRE](#)].
- [4] N. Schöneberg et al., *The H_0 olympics: a fair ranking of proposed models*, *Phys. Rept.* **984** (2022) 1 [[arXiv:2107.10291](#)] [[INSPIRE](#)].
- [5] E. Abdalla et al., *Cosmology intertwined: a review of the particle physics, astrophysics, and cosmology associated with the cosmological tensions and anomalies*, *JHEAp* **34** (2022) 49 [[arXiv:2203.06142](#)] [[INSPIRE](#)].
- [6] P.J.E. Peebles and B. Ratra, *The cosmological constant and dark energy*, *Rev. Mod. Phys.* **75** (2003) 559 [[astro-ph/0207347](#)] [[INSPIRE](#)].
- [7] E.J. Copeland, M. Sami and S. Tsujikawa, *Dynamics of dark energy*, *Int. J. Mod. Phys. D* **15** (2006) 1753 [[hep-th/0603057](#)] [[INSPIRE](#)].
- [8] S. Nojiri and S.D. Odintsov, *Introduction to modified gravity and gravitational alternative for dark energy*, *eConf* **C0602061** (2006) 06 [[hep-th/0601213](#)] [[INSPIRE](#)].
- [9] V. Sahni and A. Starobinsky, *Reconstructing dark energy*, *Int. J. Mod. Phys. D* **15** (2006) 2105 [[astro-ph/0610026](#)] [[INSPIRE](#)].
- [10] T. Padmanabhan, *Dark energy and gravity*, *Gen. Rel. Grav.* **40** (2008) 529 [[arXiv:0705.2533](#)] [[INSPIRE](#)].
- [11] S. Capozziello and M. Francaviglia, *Extended theories of gravity and their cosmological and astrophysical applications*, *Gen. Rel. Grav.* **40** (2008) 357 [[arXiv:0706.1146](#)] [[INSPIRE](#)].
- [12] T.P. Sotiriou and V. Faraoni, *$f(R)$ theories of gravity*, *Rev. Mod. Phys.* **82** (2010) 451 [[arXiv:0805.1726](#)] [[INSPIRE](#)].
- [13] J. Frieman, M. Turner and D. Huterer, *Dark energy and the accelerating universe*, *Ann. Rev. Astron. Astrophys.* **46** (2008) 385 [[arXiv:0803.0982](#)] [[INSPIRE](#)].
- [14] R.R. Caldwell and M. Kamionkowski, *The physics of cosmic acceleration*, *Ann. Rev. Nucl. Part. Sci.* **59** (2009) 397 [[arXiv:0903.0866](#)] [[INSPIRE](#)].

- [15] A. Silvestri and M. Trodden, *Approaches to understanding cosmic acceleration*, *Rept. Prog. Phys.* **72** (2009) 096901 [[arXiv:0904.0024](#)] [[INSPIRE](#)].
- [16] A. De Felice and S. Tsujikawa, *$f(R)$ theories*, *Living Rev. Rel.* **13** (2010) 3 [[arXiv:1002.4928](#)] [[INSPIRE](#)].
- [17] S. Nojiri and S.D. Odintsov, *Unified cosmic history in modified gravity: from $F(R)$ theory to Lorentz non-invariant models*, *Phys. Rept.* **505** (2011) 59 [[arXiv:1011.0544](#)] [[INSPIRE](#)].
- [18] T. Clifton, P.G. Ferreira, A. Padilla and C. Skordis, *Modified gravity and cosmology*, *Phys. Rept.* **513** (2012) 1 [[arXiv:1106.2476](#)] [[INSPIRE](#)].
- [19] S. Capozziello and M. De Laurentis, *Extended theories of gravity*, *Phys. Rept.* **509** (2011) 167 [[arXiv:1108.6266](#)] [[INSPIRE](#)].
- [20] K. Bamba, S. Capozziello, S. Nojiri and S.D. Odintsov, *Dark energy cosmology: the equivalent description via different theoretical models and cosmography tests*, *Astrophys. Space Sci.* **342** (2012) 155 [[arXiv:1205.3421](#)] [[INSPIRE](#)].
- [21] M. Li, X.-D. Li, S. Wang and Y. Wang, *Dark energy: a brief review*, *Front. Phys. (Beijing)* **8** (2013) 828 [[arXiv:1209.0922](#)] [[INSPIRE](#)].
- [22] Y.-F. Cai, S. Capozziello, M. De Laurentis and E.N. Saridakis, *$f(T)$ teleparallel gravity and cosmology*, *Rept. Prog. Phys.* **79** (2016) 106901 [[arXiv:1511.07586](#)] [[INSPIRE](#)].
- [23] S. Nojiri, S.D. Odintsov and V.K. Oikonomou, *Modified gravity theories on a nutshell: inflation, bounce and late-time evolution*, *Phys. Rept.* **692** (2017) 1 [[arXiv:1705.11098](#)] [[INSPIRE](#)].
- [24] S. Bahamonde et al., *Teleparallel gravity: from theory to cosmology*, *Rept. Prog. Phys.* **86** (2023) 026901 [[arXiv:2106.13793](#)] [[INSPIRE](#)].
- [25] C.M. Muller, *Cosmological bounds on the equation of state of dark matter*, *Phys. Rev. D* **71** (2005) 047302 [[astro-ph/0410621](#)] [[INSPIRE](#)].
- [26] S. Kumar and L. Xu, *Observational constraints on variable equation of state parameters of dark matter and dark energy after Planck*, *Phys. Lett. B* **737** (2014) 244 [[arXiv:1207.5582](#)] [[INSPIRE](#)].
- [27] C. Armendariz-Picon and J.T. Neelakanta, *How cold is cold dark matter?*, *JCAP* **03** (2014) 049 [[arXiv:1309.6971](#)] [[INSPIRE](#)].
- [28] M. Kopp, C. Skordis, D.B. Thomas and S. Ilić, *Dark matter equation of state through cosmic history*, *Phys. Rev. Lett.* **120** (2018) 221102 [[arXiv:1802.09541](#)] [[INSPIRE](#)].
- [29] S. Ilić, M. Kopp, C. Skordis and D.B. Thomas, *Dark matter properties through cosmic history*, *Phys. Rev. D* **104** (2021) 043520 [[arXiv:2004.09572](#)] [[INSPIRE](#)].
- [30] K. Naidoo, M. Jaber, W.A. Hellwing and M. Bilicki, *A dark matter solution to the H_0 and σ_8 tensions, and the integrated Sachs-Wolfe void anomaly*, [arXiv:2209.08102](#) [[INSPIRE](#)].
- [31] L. Amendola, *Coupled quintessence*, *Phys. Rev. D* **62** (2000) 043511 [[astro-ph/9908023](#)] [[INSPIRE](#)].
- [32] G. Huey and B.D. Wandelt, *Interacting quintessence. The coincidence problem and cosmic acceleration*, *Phys. Rev. D* **74** (2006) 023519 [[astro-ph/0407196](#)] [[INSPIRE](#)].
- [33] R.-G. Cai and A. Wang, *Cosmology with interaction between phantom dark energy and dark matter and the coincidence problem*, *JCAP* **03** (2005) 002 [[hep-th/0411025](#)] [[INSPIRE](#)].
- [34] D. Pavon and W. Zimdahl, *Holographic dark energy and cosmic coincidence*, *Phys. Lett. B* **628** (2005) 206 [[gr-qc/0505020](#)] [[INSPIRE](#)].
- [35] S. del Campo, R. Herrera, G. Olivares and D. Pavon, *Interacting models of soft coincidence*, *Phys. Rev. D* **74** (2006) 023501 [[astro-ph/0606520](#)] [[INSPIRE](#)].

- [36] S. del Campo, R. Herrera and D. Pavon, *Toward a solution of the coincidence problem*, *Phys. Rev. D* **78** (2008) 021302 [[arXiv:0806.2116](#)] [[INSPIRE](#)].
- [37] S. del Campo, R. Herrera and D. Pavon, *Interacting models may be key to solve the cosmic coincidence problem*, *JCAP* **01** (2009) 020 [[arXiv:0812.2210](#)] [[INSPIRE](#)].
- [38] B. Wang, Y.-G. Gong and E. Abdalla, *Transition of the dark energy equation of state in an interacting holographic dark energy model*, *Phys. Lett. B* **624** (2005) 141 [[hep-th/0506069](#)] [[INSPIRE](#)].
- [39] S. Das, P.S. Corasaniti and J. Khoury, *Super-acceleration as signature of dark sector interaction*, *Phys. Rev. D* **73** (2006) 083509 [[astro-ph/0510628](#)] [[INSPIRE](#)].
- [40] H.M. Sadjadi and M. Honardoost, *Thermodynamics second law and $\omega = -1$ crossing(s) in interacting holographic dark energy model*, *Phys. Lett. B* **647** (2007) 231 [[gr-qc/0609076](#)] [[INSPIRE](#)].
- [41] S. Pan and S. Chakraborty, *A cosmographic analysis of holographic dark energy models*, *Int. J. Mod. Phys. D* **23** (2014) 1450092 [[arXiv:1410.8281](#)] [[INSPIRE](#)].
- [42] E. Di Valentino, A. Melchiorri and O. Mena, *Can interacting dark energy solve the H_0 tension?*, *Phys. Rev. D* **96** (2017) 043503 [[arXiv:1704.08342](#)] [[INSPIRE](#)].
- [43] S. Kumar and R.C. Nunes, *Echo of interactions in the dark sector*, *Phys. Rev. D* **96** (2017) 103511 [[arXiv:1702.02143](#)] [[INSPIRE](#)].
- [44] W. Yang et al., *Tale of stable interacting dark energy, observational signatures, and the H_0 tension*, *JCAP* **09** (2018) 019 [[arXiv:1805.08252](#)] [[INSPIRE](#)].
- [45] S. Pan, W. Yang, C. Singha and E.N. Saridakis, *Observational constraints on sign-changeable interaction models and alleviation of the H_0 tension*, *Phys. Rev. D* **100** (2019) 083539 [[arXiv:1903.10969](#)] [[INSPIRE](#)].
- [46] W. Yang, S. Pan, R.C. Nunes and D.F. Mota, *Dark calling dark: interaction in the dark sector in presence of neutrino properties after Planck CMB final release*, *JCAP* **04** (2020) 008 [[arXiv:1910.08821](#)] [[INSPIRE](#)].
- [47] S. Pan et al., *Interacting scenarios with dynamical dark energy: observational constraints and alleviation of the H_0 tension*, *Phys. Rev. D* **100** (2019) 103520 [[arXiv:1907.07540](#)] [[INSPIRE](#)].
- [48] S. Pan, W. Yang and A. Paliathanasis, *Non-linear interacting cosmological models after Planck 2018 legacy release and the H_0 tension*, *Mon. Not. Roy. Astron. Soc.* **493** (2020) 3114 [[arXiv:2002.03408](#)] [[INSPIRE](#)].
- [49] E. Di Valentino, A. Melchiorri, O. Mena and S. Vagnozzi, *Interacting dark energy in the early 2020s: a promising solution to the H_0 and cosmic shear tensions*, *Phys. Dark Univ.* **30** (2020) 100666 [[arXiv:1908.04281](#)] [[INSPIRE](#)].
- [50] E. Di Valentino, A. Melchiorri, O. Mena and S. Vagnozzi, *Nonminimal dark sector physics and cosmological tensions*, *Phys. Rev. D* **101** (2020) 063502 [[arXiv:1910.09853](#)] [[INSPIRE](#)].
- [51] M. Lucca and D.C. Hooper, *Shedding light on dark matter-dark energy interactions*, *Phys. Rev. D* **102** (2020) 123502 [[arXiv:2002.06127](#)] [[INSPIRE](#)].
- [52] L.A. Anchordoqui, E. Di Valentino, S. Pan and W. Yang, *Dissecting the H_0 and S_8 tensions with Planck + BAO + supernova type Ia in multi-parameter cosmologies*, *JHEAp* **32** (2021) 28 [[arXiv:2107.13932](#)] [[INSPIRE](#)].
- [53] L.-Y. Gao, Z.-W. Zhao, S.-S. Xue and X. Zhang, *Relieving the H_0 tension with a new interacting dark energy model*, *JCAP* **07** (2021) 005 [[arXiv:2101.10714](#)] [[INSPIRE](#)].
- [54] A. Pourtsidou and T. Tram, *Reconciling CMB and structure growth measurements with dark energy interactions*, *Phys. Rev. D* **94** (2016) 043518 [[arXiv:1604.04222](#)] [[INSPIRE](#)].

- [55] R. An, C. Feng and B. Wang, *Relieving the tension between weak lensing and cosmic microwave background with interacting dark matter and dark energy models*, *JCAP* **02** (2018) 038 [[arXiv:1711.06799](#)] [[INSPIRE](#)].
- [56] M. Lucca, *Dark energy-dark matter interactions as a solution to the S_8 tension*, *Phys. Dark Univ.* **34** (2021) 100899 [[arXiv:2105.09249](#)] [[INSPIRE](#)].
- [57] S. Gariazzo, E. Di Valentino, O. Mena and R.C. Nunes, *Late-time interacting cosmologies and the Hubble constant tension*, *Phys. Rev. D* **106** (2022) 023530 [[arXiv:2111.03152](#)] [[INSPIRE](#)].
- [58] W. Yang et al., *2021- H_0 odyssey: closed, phantom and interacting dark energy cosmologies*, *JCAP* **10** (2021) 008 [[arXiv:2101.03129](#)] [[INSPIRE](#)].
- [59] Y.-H. Yao and X.-H. Meng, *Can interacting dark energy with dynamical coupling resolve the Hubble tension*, [arXiv:2207.05955](#) [[INSPIRE](#)].
- [60] C. Wetterich, *The Cosmon model for an asymptotically vanishing time dependent cosmological ‘constant’*, *Astron. Astrophys.* **301** (1995) 321 [[hep-th/9408025](#)] [[INSPIRE](#)].
- [61] L. Amendola, G. Camargo Campos and R. Rosenfeld, *Consequences of dark matter-dark energy interaction on cosmological parameters derived from SNIa data*, *Phys. Rev. D* **75** (2007) 083506 [[astro-ph/0610806](#)] [[INSPIRE](#)].
- [62] J.D. Barrow and T. Clifton, *Cosmologies with energy exchange*, *Phys. Rev. D* **73** (2006) 103520 [[gr-qc/0604063](#)] [[INSPIRE](#)].
- [63] M.S. Berger and H. Shojaei, *Interacting dark energy and the cosmic coincidence problem*, *Phys. Rev. D* **73** (2006) 083528 [[gr-qc/0601086](#)] [[INSPIRE](#)].
- [64] J. Valiviita, E. Majerotto and R. Maartens, *Instability in interacting dark energy and dark matter fluids*, *JCAP* **07** (2008) 020 [[arXiv:0804.0232](#)] [[INSPIRE](#)].
- [65] M.B. Gavela et al., *Dark coupling*, *JCAP* **07** (2009) 034 [Erratum *ibid.* **05** (2010) E01] [[arXiv:0901.1611](#)] [[INSPIRE](#)].
- [66] E. Majerotto, J. Valiviita and R. Maartens, *Adiabatic initial conditions for perturbations in interacting dark energy models*, *Mon. Not. Roy. Astron. Soc.* **402** (2010) 2344 [[arXiv:0907.4981](#)] [[INSPIRE](#)].
- [67] M.B. Gavela, L. Lopez Honorez, O. Mena and S. Rigolin, *Dark coupling and gauge invariance*, *JCAP* **11** (2010) 044 [[arXiv:1005.0295](#)] [[INSPIRE](#)].
- [68] T. Clemson et al., *Interacting dark energy — constraints and degeneracies*, *Phys. Rev. D* **85** (2012) 043007 [[arXiv:1109.6234](#)] [[INSPIRE](#)].
- [69] V. Salvatelli et al., *Indications of a late-time interaction in the dark sector*, *Phys. Rev. Lett.* **113** (2014) 181301 [[arXiv:1406.7297](#)] [[INSPIRE](#)].
- [70] Y. Wang, D. Wands, G.-B. Zhao and L. Xu, *Post-Planck constraints on interacting vacuum energy*, *Phys. Rev. D* **90** (2014) 023502 [[arXiv:1404.5706](#)] [[INSPIRE](#)].
- [71] W. Yang and L. Xu, *Cosmological constraints on interacting dark energy with redshift-space distortion after Planck data*, *Phys. Rev. D* **89** (2014) 083517 [[arXiv:1401.1286](#)] [[INSPIRE](#)].
- [72] W. Yang and L. Xu, *Testing coupled dark energy with large scale structure observation*, *JCAP* **08** (2014) 034 [[arXiv:1401.5177](#)] [[INSPIRE](#)].
- [73] W. Yang and L. Xu, *Coupled dark energy with perturbed Hubble expansion rate*, *Phys. Rev. D* **90** (2014) 083532 [[arXiv:1409.5533](#)] [[INSPIRE](#)].
- [74] Y.-H. Li, J.-F. Zhang and X. Zhang, *Testing models of vacuum energy interacting with cold dark matter*, *Phys. Rev. D* **93** (2016) 023002 [[arXiv:1506.06349](#)] [[INSPIRE](#)].
- [75] C. van de Bruck, J. Mifsud, J.P. Mimoso and N.J. Nunes, *Generalized dark energy interactions with multiple fluids*, *JCAP* **11** (2016) 031 [[arXiv:1605.03834](#)] [[INSPIRE](#)].

- [76] L. Feng and X. Zhang, *Revisit of the interacting holographic dark energy model after Planck 2015*, *JCAP* **08** (2016) 072 [[arXiv:1607.05567](#)] [[INSPIRE](#)].
- [77] C. van de Bruck, J. Mifsud and J. Morrice, *Testing coupled dark energy models with their cosmological background evolution*, *Phys. Rev. D* **95** (2017) 043513 [[arXiv:1609.09855](#)] [[INSPIRE](#)].
- [78] G.S. Sharov et al., *A new interacting two fluid model and its consequences*, *Mon. Not. Roy. Astron. Soc.* **466** (2017) 3497 [[arXiv:1701.00780](#)] [[INSPIRE](#)].
- [79] J. Mifsud and C. Van De Bruck, *Probing the imprints of generalized interacting dark energy on the growth of perturbations*, *JCAP* **11** (2017) 001 [[arXiv:1707.07667](#)] [[INSPIRE](#)].
- [80] C. Van De Bruck and J. Mifsud, *Searching for dark matter-dark energy interactions: going beyond the conformal case*, *Phys. Rev. D* **97** (2018) 023506 [[arXiv:1709.04882](#)] [[INSPIRE](#)].
- [81] W. Yang, S. Pan and A. Paliathanasis, *Cosmological constraints on an exponential interaction in the dark sector*, *Mon. Not. Roy. Astron. Soc.* **482** (2019) 1007 [[arXiv:1804.08558](#)] [[INSPIRE](#)].
- [82] H. Li, W. Yang, Y. Wu and Y. Jiang, *New limits on coupled dark energy model after Planck 2015*, *Phys. Dark Univ.* **20** (2018) 78 [[INSPIRE](#)].
- [83] M. Martinelli et al., *Constraints on the interacting vacuum — geodesic CDM scenario*, *Mon. Not. Roy. Astron. Soc.* **488** (2019) 3423 [[arXiv:1902.10694](#)] [[INSPIRE](#)].
- [84] J. Mifsud and C. van de Bruck, *An interacting dark sector and the implications of the first gravitational-wave standard siren detection on current constraints*, *Mon. Not. Roy. Astron. Soc.* **487** (2019) 900 [[INSPIRE](#)].
- [85] V.K. Oikonomou, *Classical and loop quantum cosmology phase space of interacting dark energy and superfluid dark matter*, *Phys. Rev. D* **99** (2019) 104042 [[arXiv:1905.00826](#)] [[INSPIRE](#)].
- [86] G. Cheng et al., *Testing interacting dark matter and dark energy model with cosmological data*, *Phys. Rev. D* **102** (2020) 043517 [[arXiv:1911.04520](#)] [[INSPIRE](#)].
- [87] Y.-H. Yao and X.-H. Meng, *A new coupled three-form dark energy model and implications for the H_0 tension*, *Phys. Dark Univ.* **30** (2020) 100729 [[arXiv:2205.14928](#)] [[INSPIRE](#)].
- [88] Y. Yao and X.-H. Meng, *Relieve the H_0 tension with a new coupled generalized three-form dark energy model*, *Phys. Dark Univ.* **33** (2021) 100852 [[arXiv:2011.09160](#)] [[INSPIRE](#)].
- [89] J.F. Jesus, A.A. Escobal, D. Benndorf and S.H. Pereira, *Can dark matter-dark energy interaction alleviate the cosmic coincidence problem?*, *Eur. Phys. J. C* **82** (2022) 273 [[arXiv:2012.07494](#)] [[INSPIRE](#)].
- [90] P.M. Sá, *Triple unification of inflation, dark energy, and dark matter in two-scalar-field cosmology*, *Phys. Rev. D* **102** (2020) 103519 [[arXiv:2007.07109](#)] [[INSPIRE](#)].
- [91] P.M. Sá, *Late-time evolution of the universe within a two-scalar-field cosmological model*, *Phys. Rev. D* **103** (2021) 123517 [[arXiv:2103.01693](#)] [[INSPIRE](#)].
- [92] W. Yang, S. Pan, L. Aresté Saló and J. de Haro, *Theoretical and observational bounds on some interacting vacuum energy scenarios*, *Phys. Rev. D* **103** (2021) 083520 [[arXiv:2104.04505](#)] [[INSPIRE](#)].
- [93] J. Kang, *Reconstructing a non-linear interaction in the dark sector with cosmological observations*, *Phys. Dark Univ.* **31** (2021) 100784 [[arXiv:2102.04232](#)] [[INSPIRE](#)].
- [94] A. Bonilla, S. Kumar, R.C. Nunes and S. Pan, *Reconstruction of the dark sectors' interaction: a model-independent inference and forecast from GW standard sirens*, *Mon. Not. Roy. Astron. Soc.* **512** (2022) 4231 [[arXiv:2102.06149](#)] [[INSPIRE](#)].

- [95] T. Harko, K. Asadi, H. Moshafi and H. Sheikahmadi, *Observational constraints on the interacting dark energy-dark matter (IDM) cosmological models*, *Phys. Dark Univ.* **38** (2022) 101131 [[arXiv:2203.08907](#)] [[INSPIRE](#)].
- [96] M.G. Yengejeh, S. Fakhry, J.T. Firouzjaee and H. Fathi, *The integrated Sachs-Wolfe effect in interacting dark matter-dark energy models*, *Phys. Dark Univ.* **39** (2023) 101144 [[arXiv:2206.01030](#)] [[INSPIRE](#)].
- [97] S. Chatzidakis et al., *Interacting dark energy in curved FLRW spacetime from Weyl integrable spacetime*, *JHEAp* **36** (2022) 141 [[arXiv:2206.06639](#)] [[INSPIRE](#)].
- [98] W. Yang, S. Pan, O. Mena and E. Di Valentino, *On the dynamics of a dark sector coupling*, [arXiv:2209.14816](#) [[INSPIRE](#)].
- [99] S. Pan, G.S. Sharov and W. Yang, *Field theoretic interpretations of interacting dark energy scenarios and recent observations*, *Phys. Rev. D* **101** (2020) 103533 [[arXiv:2001.03120](#)] [[INSPIRE](#)].
- [100] V.F. Mukhanov, H.A. Feldman and R.H. Brandenberger, *Theory of cosmological perturbations. Part 1. Classical perturbations. Part 2. Quantum theory of perturbations. Part 3. Extensions*, *Phys. Rept.* **215** (1992) 203 [[INSPIRE](#)].
- [101] C.-P. Ma and E. Bertschinger, *Cosmological perturbation theory in the synchronous and conformal Newtonian gauges*, *Astrophys. J.* **455** (1995) 7 [[astro-ph/9506072](#)] [[INSPIRE](#)].
- [102] K.A. Malik and D. Wands, *Cosmological perturbations*, *Phys. Rept.* **475** (2009) 1 [[arXiv:0809.4944](#)] [[INSPIRE](#)].
- [103] C. Gordon and W. Hu, *A low CMB quadrupole from dark energy isocurvature perturbations*, *Phys. Rev. D* **70** (2004) 083003 [[astro-ph/0406496](#)] [[INSPIRE](#)].
- [104] D. Wands, J. De-Santiago and Y. Wang, *Inhomogeneous vacuum energy*, *Class. Quant. Grav.* **29** (2012) 145017 [[arXiv:1203.6776](#)] [[INSPIRE](#)].
- [105] Y. Wang et al., *Cosmological constraints on a decomposed Chaplygin gas*, *Phys. Rev. D* **87** (2013) 083503 [[arXiv:1301.5315](#)] [[INSPIRE](#)].
- [106] PLANCK collaboration, *Planck 2018 results. V. CMB power spectra and likelihoods*, *Astron. Astrophys.* **641** (2020) A5 [[arXiv:1907.12875](#)] [[INSPIRE](#)].
- [107] PLANCK collaboration, *Planck 2018 results. VIII. Gravitational lensing*, *Astron. Astrophys.* **641** (2020) A8 [[arXiv:1807.06210](#)] [[INSPIRE](#)].
- [108] F. Beutler et al., *The 6dF galaxy survey: baryon acoustic oscillations and the local Hubble constant*, *Mon. Not. Roy. Astron. Soc.* **416** (2011) 3017 [[arXiv:1106.3366](#)] [[INSPIRE](#)].
- [109] A.J. Ross et al., *The clustering of the SDSS DR7 main galaxy sample — I. A 4 per cent distance measure at $z = 0.15$* , *Mon. Not. Roy. Astron. Soc.* **449** (2015) 835 [[arXiv:1409.3242](#)] [[INSPIRE](#)].
- [110] BOSS collaboration, *The clustering of galaxies in the completed SDSS-III Baryon Oscillation Spectroscopic Survey: cosmological analysis of the DR12 galaxy sample*, *Mon. Not. Roy. Astron. Soc.* **470** (2017) 2617 [[arXiv:1607.03155](#)] [[INSPIRE](#)].
- [111] PAN-STARRS1 collaboration, *The complete light-curve sample of spectroscopically confirmed SNe Ia from pan-STARRS1 and cosmological constraints from the combined pantheon sample*, *Astrophys. J.* **859** (2018) 101 [[arXiv:1710.00845](#)] [[INSPIRE](#)].
- [112] A. Lewis and S. Bridle, *Cosmological parameters from CMB and other data: a Monte Carlo approach*, *Phys. Rev. D* **66** (2002) 103511 [[astro-ph/0205436](#)] [[INSPIRE](#)].
- [113] A. Gelman and D.B. Rubin, *Inference from iterative simulation using multiple sequences*, *Statist. Sci.* **7** (1992) 457 [[INSPIRE](#)].

- [114] A.G. Riess et al., *A comprehensive measurement of the local value of the Hubble constant with $1 \text{ km s}^{-1} \text{ Mpc}^{-1}$ uncertainty from the Hubble space telescope and the SH0ES team*, *Astrophys. J. Lett.* **934** (2022) L7 [[arXiv:2112.04510](#)] [[INSPIRE](#)].
- [115] W. Yang et al., *Dynamical dark energy after Planck CMB final release and H_0 tension*, *Mon. Not. Roy. Astron. Soc.* **501** (2021) 5845 [[arXiv:2101.02168](#)] [[INSPIRE](#)].
- [116] W. Yang et al., *Observational constraints on one-parameter dynamical dark-energy parametrizations and the H_0 tension*, *Phys. Rev. D* **99** (2019) 043543 [[arXiv:1810.05141](#)] [[INSPIRE](#)].
- [117] A. Heavens et al., *No evidence for extensions to the standard cosmological model*, *Phys. Rev. Lett.* **119** (2017) 101301 [[arXiv:1704.03467](#)] [[INSPIRE](#)].
- [118] A. Heavens et al., *Marginal likelihoods from Monte Carlo Markov chains*, [arXiv:1704.03472](#) [[INSPIRE](#)].