



**HAL**  
open science

## **PURA- Related Developmental and Epileptic Encephalopathy: Phenotypic and Genotypic Spectrum**

Katrine M Johannesen, Elena Gardella, Cathrine E Gjerulfsen, Allan Bayat, Rob P W Rouhl, Margot Reijnders, Sandra Whalen, Boris Keren, Julien Buratti, Thomas Courtin, et al.

► **To cite this version:**

Katrine M Johannesen, Elena Gardella, Cathrine E Gjerulfsen, Allan Bayat, Rob P W Rouhl, et al.. PURA- Related Developmental and Epileptic Encephalopathy: Phenotypic and Genotypic Spectrum. Neurology Genetics, 2021, 7 (6), pp.e613. 10.1212/nxg.0000000000000613 . hal-03881856

**HAL Id: hal-03881856**

**<https://hal.science/hal-03881856>**

Submitted on 2 Dec 2022

**HAL** is a multi-disciplinary open access archive for the deposit and dissemination of scientific research documents, whether they are published or not. The documents may come from teaching and research institutions in France or abroad, or from public or private research centers.

L'archive ouverte pluridisciplinaire **HAL**, est destinée au dépôt et à la diffusion de documents scientifiques de niveau recherche, publiés ou non, émanant des établissements d'enseignement et de recherche français ou étrangers, des laboratoires publics ou privés.

# PURA-Related Developmental and Epileptic Encephalopathy

## Phenotypic and Genotypic Spectrum

Katrine M. Johannesen, MD, PhD, Elena Gardella, MD, PhD, Cathrine E. Gjerulfsen, MD, Allan Bayat, MD, Rob P.W. Rouhl, MD, Margot Reijnders, MD, Sandra Whalen, MD, Boris Keren, MD, PhD, Julien Buratti, MSc, Thomas Courtin, MD, Klaas J. Wierenga, MD, Bertrand Isidor, MD, Amélie Piton, MD, Laurence Favre, MD, Aurore Garde, MD, Sébastien Moutton, MD, Frédéric Tran-Mau-Them, MD, Anne-Sophie Denommé-Pichon, MD, Christine Coubes, MD, Austin Larson, MD, Michael J. Esser, MD, Juan Pablo Appendino, MD, Walla Al-Hertani, MD, Beatriz Gamboni, MD, Alejandra Mampel, MD, Lía Mayorga, MD, PhD, Alessandro Orsini, MD, PhD, Alice Bonuccelli, MD, Agnese Suppiej, MD, Julien Van-Gils, MD, Julie Vogt, MD, Simona Damioli, MD, Lucio Giordano, MD, Stephanie Moortgat, MD, PhD, Elaine Wirrell, MD, Sarah Hicks, MD, Usha Kini, MD, Nathan Noble, DO, Helen Stewart, MD, Shailesh Asakar, MD, Julie S. Cohen, MD, Sakku Bai R. Naidu, MD, Ashley Collier, MD, Eva H. Brilstra, MD, Mindy H. Li, MD, Casey Brew, MD, Stefania Bigoni, MD, Davide Ognibene, MD, Elisa Ballardini, MD, Claudia Ruivenkamp, MD, Raffaella Faggioli, MD, Alexandra Aferjar, MD, Diana Rodriguez, MD, David Bick, MD, Devorah Segal, MD, PhD, David Coman, MD, Boudewijn Gunning, MD, Orrin Devinsky, MD, Laurie A. Demmer, MD, Theresa Grebe, MD, Dario Pruna, MD, Ida Cursio, MD, Lynn Greenhalgh, MD, MSc, Claudio Graziano, MD, PhD, Rahul Raman Singh, MD, Gaetano Cantalupo, MD, Marjolaine Willems, MD, Sangeetha Yoganathan, MD, Fernanda Góes, MD, Richard J. Leventer, MD, PhD, Davide Colavito, MD, Sara Olivotto, MD, Barbara Scelsa, MD, Andrea V. Andrade, MD, Kelly Ratke, PhD, Farha Tokaraz, MD, Atiya S. Khan, MD, Clothilde Ormieres, MD, William Benko, MD, Karen Keough, MD, Sotirios Keros, MD, Shanawaz Hussain, MD, Ashlea Franques, MD, Felicia Varsalone, MD, Sabine Grønberg, MD, Cyril Mignot, MD, PhD, Delphine Heron, MD, Caroline Nava, MD, PhD, Arnaud Isapof, MD, Felipe Borlot, MD, Robyn Whitney, MD, Anne Ronan, MD, Nicola Foulds, MD, Marta Somorai, MD, John Brandsema, MD, Katherine L. Helbig, MSc, Ingo Helbig, MD, PhD, Xilma R. Ortiz-González, MD, Holly Dubbs, MD, Antonio Vitobello, PhD, Mel Anderson, MSc, Dominic Spadafore, MSc, David Hunt, MD, Rikke S. Møller, MSc, PhD, Guido Rubboli, MD, PhD,\* and the PURA study group

### Correspondence

Dr. Johannesen  
kamaa@filadelfia.dk  
or Dr. Rubboli  
guru@filadelfia.dk

*Neurol Genet* 2021;7:e613. doi:10.1212/NXG.0000000000000613

\*Guido Rubboli, MD, PhD, is designated as the last author of this article.

From the Department of Epilepsy Genetics and Personalized Treatment (K.M.J., E.G., C.E.G., A.B., R.S.M., G.R.), The Danish Epilepsy Centre Filadelfia, member of ERN EpiCARE, Dianalund; Institute for Regional Health Research (K.M.J., E.G., A.B., R.S.M.), University of Southern Denmark, Odense; Department of Neurology (R.P.W.R.), Maastricht University Medical Centre (MUMC+); Academic Centre for Epileptology Kempenhaeghe/MUMC+ (R.P.W.R.), Maastricht; School for Mental Health and Neuroscience (R.P.W.R.), Maastricht University; Department of Clinical Genetics (M.R.), Maastricht University Medical Center, the Netherlands; APHP, Sorbonne Université (S.W.), Hôpital Armand Trousseau, UF de Génétique Clinique, Centre de Référence Anomalies du Développement et Syndromes Malformatifs, Paris, France; Department of Genetics (B.K., J.B., T.C., C.N.), Pitié-Salpêtrière hospital, APHP, Sorbonne Université, Paris, France; Department of Clinical Genomics (K.J.W.), Mayo Clinic Florida, Jacksonville; Service de Génétique Médicale (B.I., A.P., A.-S.D.-P.), CHU de Nantes; Centre de Référence Anomalies du Développement et Syndromes Malformatifs (L.F., A.G., S.M.), FHU TRANSLAD, CHU Dijon; INSERM UMR1231 (L.F., A.G., S.M., F.T.M.-T., A.V.), GAD team, Université de Bourgogne-Franche Comté, Dijon; Unité Fonctionnelle d'innovation diagnostique des maladies rares (F.T.-M.-T., A.V.), Pôle de Biologie, FHU-TRANSLAD, CHU Dijon Bourgogne; Department of Medical Genetics (C.C., M.W.), Rare Diseases and Personalized Medicine, CHU Montpellier, France; Childrens Hospital Colorado (A.L.), Anschutz Medical Campus, Aurora, CO; Division of Clinical Neuroscience (M.J.E., J.P.A.), Department of Pediatrics, Alberta, Canada; Alberta Childrens Hospital (J.P.A., F.B.), Cumming School of Medicine, University of Calgary, Alberta, Canada; Department of Pediatrics (W.A.-H.), Division of Genetics and Genomics, Boston Childrens Hospital and Harvard Medical School, MA; Instituto de Neurologia Infanto Juvenil (B.G.), Neuroinfan; Instituto de Genética-Hospital Universitario (A.M.), Universidad Nacional de Cuyo; Instituto de Histología y Embriología de Mendoza (IHEM) (L.M.), Universidad Nacional de Cuyo, Mendoza, Argentina; Azienda Ospedaliera Universitaria Pisana (A.O.); Neuropaediatric Section (A.B.), Pediatric Department, Santa Chiara University Hospital, Pisa; Department of Medical Sciences- Pediatric Section (A.S.), University of Ferrara, Italy; CHU Bordeaux (J.V.-G.), Bordeaux, France; West Midlands Regional Genetics Service (J.V.), Birmingham Women's and Children's Hospital, Birmingham, UK; Child Neuropsychiatric Division (S.D., L.G.), Spedali Civili, Brescia, Italy; Institut de Pathologie et de Génétique (IPG) (S.M.), Gosselies, Belgium; Divisions of Child and Adolescent Neurology and Epilepsy (E.W.), Department of Neurology, Mayo Clinic, Rochester, MN; Oxford Centre for Genomic Medicine (S.H., H.S.); Oxford University Hospitals NHS Trust (U.K.), United Kingdom; Blank Children's Developmental Center (N.N.), Unity Point Health, West Des Moines, IA; Sutter Medical Centre (S.A.), Sacramento, CA; Kennedy Krieger Institute (J.S.C.); Johns Hopkins University (S.R.N.), Baltimore, MD; Provincial Medical Genetics Program (A.C.), St. Johns Medical Center, NL, Canada; University Medical Center Utrecht (E.H.B.), Utrecht, the Netherlands; Rush University Medical Center (M.H.L., C.B.), Chicago, IL; Medical Genetic Unit (S.B., D.O.), Maternal and Child Department, Ferrara University Hospital; Medical Science Department (D.O.), Ferrara University; Neonatal Intensive Care Unit (E.B.), Pediatric Section, Department of Medical Sciences, Ferrara University, Italy; Department of Clinical Genetics (C.R.), LUMC, Leiden, the Netherlands; Pediatric Unit, Maternal and Child Department (R.F.), Ferrara University Hospital, Italy; APHP Trousseau (A.A., C.M., D.H.); Service de Neuropédiatrie (D.R., A.I.), Hôpital Trousseau, Sorbonne Université, APHP.SU, Paris, France; HudsonAlpha Institute for Biotechnology (D.B.), Huntsville, AL; Department of Pediatrics (D.S., S.K.), Weill Cornell Medicine, New York; Queensland Children's Hospital (D.C.), Brisbane, QL, Australia; Department of Neurology (B.G.), Stichting Epilepsie Instellingen Nederland, Zwolle, the Netherlands; Department of Neurology (O.D.), NYU School of Medicine; Atrium Health Levine Childrens Hospital (L.A.D.), Charlotte, NC; Phoenix Childrens Hospital (T.G.), the University of Arizona College of Medicine; Division of Child Neurology and Psychiatry (D.P.), Azienda Ospedaliera Universitaria; Neurology and Epileptology Unit (I.C.), Pediatric Department, Brotzu Hospital Trust, Cagliari, Italy; Liverpool Centre for Genomic Medicine (L.G., G.R.), Liverpool Womens NHS Foundation Trust, Liverpool, United Kingdom; U.O. Genetica Medica (C.G.), Policlinico S. Orsola-Malpighi, Bologna, Italy; Department of Children's neurosciences (R.R.S.), Guys and St. Thomas' NHS foundation trust, London United Kingdom; Department of Child Neuropsychiatry (G.C.), University of Verona, Italy; Christian Medical College (S.Y.), Vellore, India; Neurology Pediatric Unit (F.G.), Pediatric Department, Fernandes Figueira Institute, Fiocruz, Brazil; Royal Childrens Hospital (F.J.L.), Melbourne, Australia; Research & Innovation S.r.l. (D.C.), Padova; Pediatric Neurology Unit (S.O., B.S., F.V.), V. Buzzi Childrens Hospital, Milan, Italy; Department of Paediatrics (A.V.A.), London Health Science Centre/Schulich School of Medicine and Dentistry, University of Western Ontario, London, ON, Canada; Ambry Genetics (K.R.), Aliso Viejo, CA; Advocate Lutheran General Hospital (F.T.), Park Ridge, IL; PPG Pediatric Neurology (A.S.K.), Parkview Health, Fort Wayne, IN; Department of Medical Genetics (C.O.), AP-HP, Necker-Enfants Malades Hospital, Paris, France; Department of Neurology (W.B.), UC Davis, Sacramento, CA; Department of Pediatrics (K.K.), Texas A&M University Medical School, Austin; Leeds General Infirmary (S.H.), United Kingdom; Thompson River Pediatrics (A.F.), Johnstown, CO; Department of Neuropediatrics (S.G.), University Hospital Copenhagen, Denmark; Division of Neurology (F.B., R.W.), Department of Paediatrics, The Hospital for Sick Children, Toronto, Ontario, Canada; Hunter Genetics Unit, Waratah, Australia (A.R.); Wessex Clinical Genetics Service, Princess Anne Hospital, Southampton, United Kingdom (N.F., D.H.); KBO-Kinderzentrum München, Munich, Germany (M.S.); Division of Neurology, Epilepsy Neurogenetics Initiative, Childrens Hospital of Philadelphia (J.B., K.L.H., I.H., X.R.O.-G., H.D.); Perelman School of Medicine, Philadelphia, PA (J.B.); PURA Syndrome Foundation, Greensborough, Australia (I.H., M.A., D.S.); PURA Syndrome Foundation, Kansas City, MO (I.H., D.S.).

Go to [Neurology.org/NG](https://www.neurology.org/NG) for full disclosures. Funding information is provided at the end of the article.

The Article Processing Charge was funded by The PURA Syndrome Foundation.

This is an open access article distributed under the terms of the Creative Commons Attribution-NonCommercial-NoDerivatives License 4.0 (CC BY-NC-ND), which permits downloading and sharing the work provided it is properly cited. The work cannot be changed in any way or used commercially without permission from the journal.

## Glossary

**AA** = amino acid; **ASM** = antiseizure medication; **DEE** = developmental and epileptic encephalopathy; **ESES** = electrical status epilepticus during sleep; **GTC** = generalized tonic-clonic; **ID** = intellectual disability; **KO** = knockout; **LEV** = levetiracetam; **PTV** = protein-truncating variant; **PURA** = purine-rich element-binding protein A; **SUDEP** = sudden unexpected death in epilepsy; **TPM** = topiramate; **VPA** = valproate.

---

## Abstract

### Background and Objectives

Purine-rich element-binding protein A (*PURA*) gene encodes Pur- $\alpha$ , a conserved protein essential for normal postnatal brain development. Recently, a *PURA* syndrome characterized by intellectual disability, hypotonia, epilepsy, and dysmorphic features was suggested. The aim of this study was to define and expand the phenotypic spectrum of *PURA* syndrome by collecting data, including EEG, from a large cohort of affected patients.

### Methods

Data on unpublished and published cases were collected through the *PURA* Syndrome Foundation and the literature. Data on clinical, genetic, neuroimaging, and neurophysiologic features were obtained.

### Results

A cohort of 142 patients was included. Characteristics of the *PURA* syndrome included neonatal hypotonia, feeding difficulties, and respiratory distress. Sixty percent of the patients developed epilepsy with myoclonic, generalized tonic-clonic, focal seizures, and/or epileptic spasms. EEG showed generalized, multifocal, or focal epileptic abnormalities. Lennox-Gastaut was the most common epilepsy syndrome. Drug refractoriness was common: 33.3% achieved seizure freedom. We found 97 pathogenic variants in *PURA* without any clear genotype-phenotype associations.

### Discussion

The *PURA* syndrome presents with a developmental and epileptic encephalopathy with characteristics recognizable from neonatal age, which should prompt genetic screening. Sixty percent have drug-resistant epilepsy with focal or generalized seizures. We collected more than 90 pathogenic variants without observing overt genotype-phenotype associations.

---

Purine-rich element-binding protein A (*PURA*) gene, located on chromosome 5q31, encodes a single-exon transcript that results in a highly conserved 322 amino acid (AA) protein, Pur- $\alpha$ .<sup>1</sup> Pur- $\alpha$  is essential for normal postnatal brain development, as well as proliferation of neuronal cells and synapse formation.<sup>2</sup> Pur- $\alpha$  knock-out mice display a severe phenotype with neurologic dysfunction, including spontaneous seizures, tremor, and early death.<sup>3</sup> The Pur- $\alpha_{+/-}$  mouse shows hypotonia, gait deficits, and memory dysfunction, correlating with a loss of neurons in the cerebellum and hippocampus.<sup>4</sup>

Initially defined as the 5q31.3 microdeletion syndrome, after the discovery of point variants, the term *PURA* syndrome (OMIM #616158) was acknowledged, and more than 70 patients with pathogenic de novo variants in *PURA* have been published to date.<sup>2,5-15</sup> *PURA* phenotypes are heterogeneous and can include moderate to severe intellectual disability (ID), hypotonia, movement disorders, epilepsy, dysmorphic facial features, and brain abnormalities.<sup>7,10</sup> Most patients do not achieve independent walking and remain nonverbal.<sup>7</sup> The neonatal period is often complicated by respiratory insufficiency and feeding difficulties because of pronounced hypotonia, and children often have an exaggerated startle response.<sup>7</sup>

Epilepsy is reported in approximately half of the patients, with seizure onset usually in infancy—early childhood, although the age at onset has a wide range.<sup>7</sup> Seizure types are often refractory and are usually described as generalized tonic-clonic (GTC) seizures, absence of seizures, epileptic spasms, and tonic seizures, with the most commonly diagnosed epilepsy syndrome being Lennox-Gastaut syndrome.<sup>7</sup> Specific treatment recommendations are not currently available.

Genotype-phenotype correlations in *PURA* syndrome have been inconsistent so far, and even within patients with identical variants, phenotype and severity can vary significantly.<sup>7</sup>

In this study, we report on 142 patients including 67 unpublished cases aiming to expand and further define the phenotypic and genotypic spectrum of the *PURA* syndrome, with particular focus on the epilepsy phenotype.

## Methods

### Patients

Patients were recruited from genetic and epilepsy clinics worldwide. Most of the patients were referred through the *PURA*

Syndrome Foundation. Genetic variants were assessed for pathogenicity according to the American College of Medical Genetics and Genomics guidelines,<sup>16</sup> including criteria such as being nonsynonymous, splice-site altering, nonsense, or frame-shift changes, predicted damaging by 1 or more prediction software (Poly-Phen-2, SIFT, and MutationTaster), not seen in controls in the GnomAD browser and occurring de novo. Pathogenic and likely pathogenic variants were included. Deletions were not included. Sanger sequencing was used to confirm all variants and perform segregation analysis.

Clinical characteristics were assessed through a standardized phenotyping sheet and included data on neuroimaging and neurophysiology, as well as treatment response. Treatment response was assessed by the referring clinician as seizure free (no seizure for >6 months at the time of the referral of the patient to the study), seizure reduction, no effect or seizure aggravation. Seizures were classified according to the latest proposals of the International League Against Epilepsy commission on classification.<sup>17,18</sup> EEG data were collected by means of standard EEG recording or daytime video-polygraphic recording, including wakefulness and sleep. Longitudinal EEG evaluation over time was not performed because of lack of data. Whenever possible, original EEG studies were evaluated by 2 neurologists with EEG expertise (E.G. and G.R.).

A PubMed search using the search term “PURA” was performed to extract data on previously published patients. Last search date: June 1, 2020.

### Statistical Analysis

Clinical data were analyzed using Stata version 15.1 for Mac (StataCorp, College Station, TX). For continuous unmatched data, the Wilcoxon rank-sum (Mann-Whitney) was used. Significance was tested using a 2-tailed test of proportions, and significance was reached if  $p < 0.05$ . The do-file used to perform the analysis is available on request.

### Standard Protocol Approvals, Registrations, and Patient Consents

The local ethical committees approved this study. All patients or parents/legal guardians in case of minors signed informed consent.

### Data Availability

Those eligible will be granted access to deidentified patient data in excel format, as well as do-files to Stata on request. Data will be stored for 6 months after publication. Those eligible includes independent researcher wishing to perform additional data analysis.

## Results

Sixty-seven previously unpublished patients were included along with 75 previously published patients—142 patients in total. Age at inclusion ranged from 5 months to 48 years (median 6 years). The total cohort is given in eTables 1 and 2 ([links.lww.com/NXG/A448](https://links.lww.com/NXG/A448) and [links.lww.com/NXG/A449](https://links.lww.com/NXG/A449)).

## Clinical Features

### Neonatal Period

Data were available in 134 patients (94.4%); 114 of the 134 patients (85.2%) had congenital hypotonia and 72 of 134 (53.5%) had respiratory difficulties, the most common being central sleep apneas, which required mechanical ventilation or supplementary oxygen in 19 of the 72 patients (26.9%). Feeding difficulty was another common issue seen in 109 of the 134 patients (81.3%), and it required gastrointestinal tube feeding in 42 of the 109 patients (38.5%). Other features of the neonatal period included hypersomnolence (35/134, 26.1%), and hypothermia (15/134, 11.3%).

### Childhood and Early Adulthood (<25 Years of Age)

Developmental milestones were delayed in all patients (analyzed in previously unpublished patients only, Table 1). At the time of inclusion, 47 patients achieved head control (70.1%), median age 16 months. Forty-three patients were able to sit (56.6%), median age 17.5 months. Thirty-four were able to walk with aid (50.7%), and 25 were walking independently (37.3%), median ages 5 and 3.5 years, respectively. Five patients regressed from walking to being nonambulatory. Communication skills were very limited in all the patients; 93.5% were nonverbal.

In childhood and early adulthood, hypotonia continued to be an overt clinical feature affecting 107 of the 134 patients (79.9%) with PURA syndrome. Movement disorders such as dyskinesia, hand stereotypies, ataxia, and chorea-like movements were detected in 32 of the 134 patients (23.9%). A pathologic startle response was present in 24 of 134 (17.9%). Additional common disorders were strabismus (28, 20.9%), horizontal nystagmus not related to antiseizure medication (ASM) (22, 16.4%), and cortical vision impairment, 15 (11.2%). In 8 of the 50 patients (16.0%) without epilepsy, episodes with twitching or with staring, not associated with any EEG correlate, were considered of nonepileptic nature.

Other common characteristics included constipation (27/134, 20.1%), scoliosis (26/134, 19.4%), hip dysplasia (21/134, 15.7%), cardiac and large vessel abnormalities (15/134,

**Table 1** Age of Achievement of Developmental Milestones in the PURA Syndrome

Developmental milestones	Achieved in n patients (%)	Median age of achievement (range)
Head control	47 (70.1%)	16 mo (8–24 mo)
Rolling over	44 (65.7%)	13.5 mo (6–18 mo)
Sitting	43 (56.6%)	17.5 mo (10 mo–3.5 y)
Crawling	37 (55.2%)	2.5 y (1.5–4 y)
Walking with assistance	34 (50.7%)	5 y (2.5–10 y)
Walking	25 (37.3%)	3 y (1 y 4 mo–12 y)

Abbreviation: PURA = purine-rich element-binding protein A.



11.2%), dysphagia (15/134, 11.20%), delayed puberty (13/134, 9.7%), and small stature (12/134, 9.0%).

### Adulthood (>25 Years of Age)

Nine patients were 25 years of age or older at the time of inclusion. All 9 patients had hypotonia. Three were capable of walking autonomously, 1 could walk with aid, and the remainder were nonambulant. All, but one, were nonverbal. Six had severe ID, while 3 had moderate ID.

### Early Mortality

In our cohort, 4 patients were deceased: 1 (#39) died at the age of 15 years because of sudden unexpected death in epilepsy (SUDEP), whereas 1 (#40) died at the age of 3 years and 2 (#70 and #104) died in their twenties, in a state of severe general compromise after a relentless deterioration of neurologic conditions, ultimately because of respiratory distress.<sup>5,7</sup> Of notice, 2 of the patients (#39 and #40) carry the same variant, i.e., c.812\_814del, p.(Phe271del). Two additional patients with this variant have been published (#108<sup>8</sup> and #109<sup>7</sup>); however, at the time of publication, both patients were very young (<1 year), so the disease course was still unknown. A summary of the clinical features is available in Table 2.

**Table 2** Clinical Features of the Total PURA Cohort

Clinical features	
Sex, female/male (%)	93/64 (59.2%/40.8%)
Age at inclusion, median (range)	6 y (5 mo–48 y)
Epilepsy (%)	84 (59.2%)
Age of epilepsy onset, median (range)	3 y (1 d–18 y)
Most common seizure types (%)	Myoclonic (22.5%) GTC (21.3%) Focal (20.2%)
Neurologic features	
Neonatal period	
Hypotonia	121 (85.2%)
Feeding difficulties	115 (81.0%)
Respiratory distress	76 (53.5%)
Hypersomnolence	37 (26.1%)
Childhood to adulthood	
Hypotonia	113 (79.6%)
Strabismus	30 (21.1%)
Nonepileptic episodes (twitching or staring)	23 (16.2%)
Pathologic startle response	25 (17.6%)
Movement disorder	34 (23.9%)
Dysmorphic features	92 (64.8%)
Death	4 (2.8%)

Abbreviation: PURA = purine-rich element-binding protein A.

### Neuroimaging

Half (51.4%) of the patients showed changes in the MRIs. Most commonly, these changes included delayed myelination (38.5%) and volume loss (14.1%).

### Dysmorphology

Ninety-two patients (64.8%) displayed dysmorphic features. Facial photographs are shown in Figure 1. Subtle but recurrent similarities were observed including a hypotonic face, high anterior hairline, almond-shaped palpebral fissures, and full cheeks. A flat nasal bridge with a wide and triangular nasal tip, thickened nostrils, a well-defined philtrum, heavy eyebrows, and periorbital fullness was present in a subset of individuals.

### Epilepsy Phenotype

Eighty-four patients (59.2%) had epilepsy. The median age at seizure onset was 3 years, ranging from the first day of life to 18 years. Age at inclusion in the subgroup of patients with epilepsy was 9.6 years (vs 4.9 years in the subgroup without epilepsy,  $p = 0.0001$ ). Data on seizure types were available for 72 of the 84 patients (85.7%). Heterogeneous seizure types were reported (Figure 1), with the most common being myoclonic seizures (22.5%), GTC seizures (21.3%), focal seizures (20.2%) with secondary generalization (15.7%), epileptic spasms (19.1%), and atonic (14.6%) and tonic seizures (12.4%). Reflex seizures to auditory, visual, and somatosensory stimuli (such as touch, tooth brushing or hair brushing, pain, associated with evacuation) were reported in 6 patients (7.9%) (#17, #20, #31, #35, #91, and #92, eTables 1 and 2, [links.lww.com/NXG/A448](https://links.lww.com/NXG/A448) and [links.lww.com/NXG/A449](https://links.lww.com/NXG/A449)).<sup>8,9</sup> Reflex seizures were described as myoclonic or atonic seizures, or “absence-like” episodes, and in some patients, they occurred for a transitory period (#31). Overall, half (53.7%) of the patients presented with various seizure types in different combinations, including either focal or generalized (such as absences, myoclonic, and GTC) seizure types in the same patient. A diagnosis of Lennox-Gastaut syndrome or West syndrome was made in 5 patients (#79, #92, #97, #99, and #100) and 2 patients (#19 and #40), respectively.<sup>5,7,8</sup> We attempted to investigate whether early-onset (<12 years) and later-onset (>12 years) epilepsies presented with different phenotypes. These analyses were hampered by the unbalanced distribution of the available information in the 2 groups because seizure types and age at onset were reported in 64 patients with onset before or at the age of 12 years and in 6 patients with onset after the age of 12 years. Four of the 6 patients with epilepsy onset after 12 years presented with focal, focal and secondary GTC, or GTC. Patients with onset before the age of 12 years presented with heterogeneous seizure types in variable combinations.

### EEG

EEG data were collected in 104 of the 142 patients (73.2%), including in 67 of the 84 patients (79.8%) with epilepsy. Abnormal EEGs, not further specified, were reported in 30 epileptic participants (44.7%), whereas in 3 (4.4%), the EEG was described as unremarkable. In the remaining 37 patients, background slowing was reported in 19 of 37 (51.3%), whereas epileptic abnormalities were described as diffuse/generalized in 12 of the 37 patients (32.4%), multifocal in 10 of the 37 patients (27%), and focal in 7 of

**Figure 1** The Faces of the *PURA* Syndrome



Faces of patients with pathogenic *PURA* variants. Recurrent similarities include a myopathic face, high anterior hairline, almond-shaped palpebral fissures, and full cheeks. A flat nasal bridge with a wide and triangular nasal tip, thickened nostrils, a well-defined philtrum, heavy eyebrows, and periorbital fullness was seen in a subset of individuals. *PURA* = purine-rich element-binding protein A.

the 37 patients (18.9%), respectively. Four children (10.8%) presented with an excessive activation of the epileptic abnormalities during sleep (resembling an electrical status epilepticus during sleep [ESES] pattern), whereas hypsarrhythmia and burst suppression were observed in 3 patients (8.1%) each (Figure 2).

EEG recordings were available also in 37 of the 57 patients (64.9%) without epilepsy. It showed poorly organized/slowed background activity in 8 of the 37 patients (21.6%), diffuse spikes in 1 of 37 (2.7%), and focal spikes in 2 of 37 (5.4%); in the remaining patients, it was diagnosed as abnormal not further specified in 1 of 37 (2.7%) and unremarkable in 25 of 37 (67.5%). At the time of the patient collection, none of the patient without epilepsy featuring a previously abnormal EEG was reported to have presented with epilepsy in the follow-up.

### Epilepsy Treatment

Treatment response was evaluated in the patients with epilepsy from the previously unpublished cohort only (42 patients) because data were too sparse in the published patients.

Most of the patients (28/42, 66.7%) were still having seizures despite appropriate treatment with ASM. Two patients were able to taper off monotherapy ASM (#36 and #41, age 18 years and 3

years 9 months) with sustained seizure freedom. Seizure freedom was achieved with valproate (VPA) in 4 patients, topiramate (TPM) in 3 patients, and levetiracetam (LEV) in 2 patients, either as monotherapy or in combination with other drugs. Seizure freedom was sustained for 3 to 8 years (median 3.8 years) at the time of inclusion of these patients in the study. Seizure reduction was observed with VPA in 8 patients, LEV in 5, TPM in 5, and lamotrigine in 4 patients. Seizure worsening or side effects causing cessation of drug use was seen with LEV in 3 patients, with VPA and TPM in 2 patients each, and with lacosamide in 1 patient, either as monotherapy or in combination with other drugs.

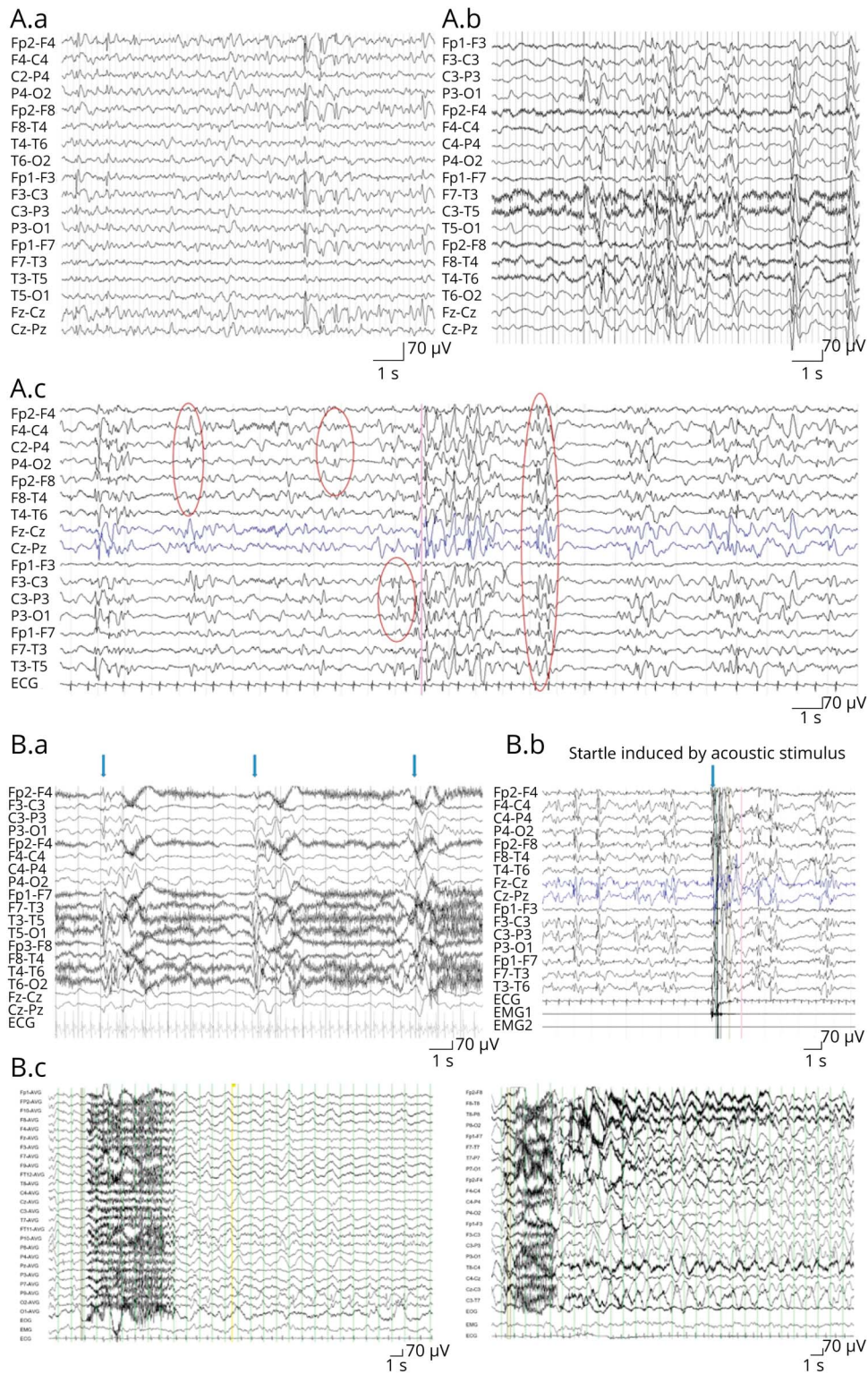
Six patients tried the ketogenic diet: 2 had a seizure reduction, while the remaining 4 had no effect. Cannabidiol was tried only in 2 patients, without any effect. Vagal nerve stimulation implantation was tried in 3 patients and resulted in seizure freedom in 1 patient and reduced seizure frequency in 2 patients.

### Genetics

Ninety-seven different variants were identified in 142 patients; 38 were previously unpublished. In all cases where inheritance could be determined, variants occurred de novo. Missense variants were present in 24.6% of the patients, a 3-AA in-frame deletion was seen in 9.9%, while the remaining 65.5% carried



**Figure 2** EEG Changes in the *PURA* Syndrome



(A) The interictal EEG is characterized by slow background and multifocal spike/sharp and slow waves predominant either in the frontal regions (a, pt. #42) or in the posterior quadrants (b, pt. #30). The epileptiform activity is accentuated during sleep; this image (c, pt. #19) shows very frequent multifocal spike/polyspikes and waves and sharp and slow waves, independently in the right central, right parietal, and left central regions or diffuse. (B) The ictal EEG showed (a) cluster of epileptic spasms (each arrow corresponds to a spasm) (pt. #30), (b) a startle induced by acoustic stimulus (pt. #19), and (c) brief tonic seizures out of sleep with an EEG correlation consisting of diffuse rapid activity (3–6 seconds) followed by diffuse delta activity and trains of spike and slow waves in the posterior regions (pt. #30). PURA = purine-rich element-binding protein A.

protein-truncating variants (PTVs) such as in-frame deletions, stop-, and frameshift variants. Missense variants and PTVs were seen in patients with similar phenotypes and both with and without epilepsy.

Nineteen variants were seen at the same position—most of them detected only in 2 or 3 patients, but the p.(Leu54Alafs\*)/p.(Leu54Cysfs\*) was seen in 6 patients, the p.(Val226Glyfs\*)/p.(Val226Serfs\*) was seen in 4 patients, the p.(Phe233del) was

seen in 14 patients, the p.(Arg245\*)/p.(Arg245Pro) was seen in 4 patients, and the p.(Phe271del) was also seen in 4 patients (eTable 3, links.lww.com/NXG/A450). Patients both with and without epilepsy were seen in several of these variants, even within the same variant. See eTable 3 for a summary.

The variants were distributed throughout the gene: 33.1% were located in the PUR-I repeat, 21.8% in the PUR-II repeat, and 23.2% in the PUR-III repeat, whereas the remainder were outside the PUR repeats (Figure 3). Five missense variants were located outside the PUR repeats.<sup>2,5,7</sup>

Two patients had compound heterozygous variants (#62 and #97); however, their clinical presentation did not vary from the heterozygous variants,<sup>5</sup> inheritance was either de novo or unknown, and only 1 of the variants in each patient was defined as pathogenic according to the American College of Medical Genetics and Genomics guidelines.<sup>16</sup>

## Discussion

With this comprehensive study of 142 patients, we provide an outline of the phenotypic and genotypic spectrum of the *PURA* syndrome and we significantly expand the current patient population, suggesting that pathogenic variants in *PURA* might underlie ID and developmental and epileptic encephalopathy (DEE), more often than previously thought.

This study was done retrospectively and through clinician assessment of patients. When original EEG tracings were not available for review, EEG evaluation was based on EEG reports, discussing them, when necessary, with the referring physician. Unfortunately, longitudinal EEG data were not available; therefore, it has not been possible to evaluate the EEG evolution during the course of the disease.

Some data points are missing in some patients, although follow-up with clinicians was attempted. Patients were also

assessed only once for inclusion; thus, longitudinal clinical data were not available in this study.

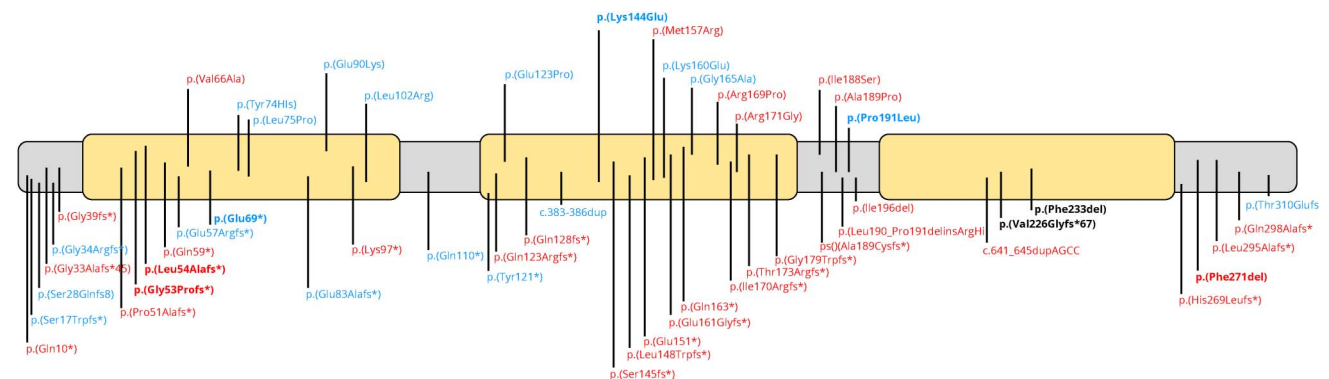
Most commonly, patients with *PURA* syndrome present with neonatal hypotonia, complicated by feeding difficulties, often requiring tube feeding, and respiratory distress.

The respiratory distress can be as severe as to cause respiratory insufficiency, requiring frequent recurrent pulmonary aspiration and often demanding mechanical ventilation because of the increased risk of central apnea, similar to the picture reported in patients with 5q31 microdeletions encompassing the *PURA* gene, who also feature a marked hypotonia at birth.<sup>8</sup>

Hypersomnolence and hypothermia further demonstrate the severity of the *PURA* syndrome. There were no significant differences between patients with and without neonatal hypotonia at inclusion, neither in the phenotypic appearances nor in the genetics. The hypotonia persists through childhood and adulthood, although in some patients, it gradually improves and motor skills continue to develop, eventually resulting in the acquisition of autonomous walking. This may reflect the steady increase of Pur- $\alpha$  during development, as seen in the mice.<sup>3,19</sup> The median age at inclusion was 6 years; thus, the estimated numbers are to be considered minimum values. In patients able to ambulate, gait is often ataxic; this finding can correlate with the fact that *PURA* expression peaks in the postnatal period, when interneuronal connections are being established, especially in the cerebellum.<sup>3</sup> Gait disturbances were also found in the heterozygous mouse.<sup>4</sup>

Nonepileptic paroxysmal motor manifestations and pathologic startles were reported in a significant proportion of patients, both with and without epilepsy. In recent years, the occurrence of nonepileptic movement disorders in participants with DEE has been increasingly recognized.<sup>20,21</sup> Indeed, hyperkinetic movement manifestations, such as dystonia and choreoathetosis, are now considered a common phenotypic feature in individuals

**Figure 3** The *PURA* Gene



The *PURA* gene with previously unpublished variants. Missense on top, protein-truncating variants below. With epilepsy in red, without epilepsy in blue, and recurrent variant in bold. PUR repeats indicated by yellow coloring: PUR-I position 42–106, PUR-II position 120–182, and PUR-III position 197–252. PURA = purine-rich element-binding protein A.



with *FOXG1*, *GNAO1*, *SCN8A*, *CACNA1B*, and *STXBPI*-related epilepsy-dyskinesia syndromes.<sup>22-26</sup> Hand stereotypies are commonly observed in children with autism or developmental delay, irrespective of precise etiology,<sup>27</sup> and “per se” they do not confer any specificity to affected patients; however, the definition of detailed accompanying phenotypes (such as hyperkinetic movements or hand stereotypies) can be important to characterize the disease spectrum and the early recognition of the *PURA*-related DEE, ultimately prompting referral of the patients for genetic testing.

A pathologic startle was observed in approximately 18% of our patients. At variance with our patients, the *Pur-α<sub>+</sub>/-* mouse shows a trend toward a reduced startle response to acoustic stimuli, a finding considered unexpected by the authors of the study<sup>4</sup> that requires to be further investigated, while the mouse also displayed occasional seizures on handling.<sup>3</sup> Exaggerated startle attacks, described as sudden tonic postures with raising of bent arms over the head, flexion of the neck and trunk, in response to touch or sound stimuli, not associated with epileptic changes in the EEG,<sup>28</sup> have been reported in 38% of a cohort of children presenting with an encephalopathy associated with *KCNQ2* pathogenic variants.<sup>29</sup> Our findings of a pathologic startle, previously unreported, might add to the constellation of clinical features that could contribute to an early diagnosis of *PURA*-related DEE.

In older patients, scoliosis is common because of truncal hypotonia. Other features include impaired intestinal motility (reflux and constipation most commonly), visual disturbances, and in a few patients hearing deficits as well. The underlying mechanisms for these features are unknown.

In our study cohort, 3 patients died because of respiratory failure and 1 because of SUDEP.<sup>5,7,30</sup> *PURA* knockout (KO) mice do not survive beyond 28 postnatal days<sup>3</sup>; however, an increased death rate is not observed in the heterozygous mice (*PURA<sub>+</sub>/-*).<sup>3</sup> Thus, we can speculate that if the human phenotype is comparable with the heterozygous mouse, the mortality seen in our cohort might be an expression of the increased mortality associated with severe developmental disorders and epilepsy in general and not linked directly to *PURA*. On the contrary, if the mortality rate observed here is indeed related to *PURA*-related DEE, it is lower than that reported in Dravet syndrome (15.84/1,000 person-years),<sup>31</sup> whereas it is comparable with the mortality seen in other DEEs, such as *SCN8A*-related DEE (mortality 5.3%), which also shows similar causes of death.<sup>32</sup> Lack of longitudinal follow-up in this study is a limitation in the assessment of the mortality. Further studies, in particular investigating the natural history of the *PURA*-related DEE, might be helpful to solve this issue and to establish the mortality rate of this DEE.

MRIs were normal in half of the patients, whereas the other half showed demyelination or loss of brain volume. In 1 patient (#54), follow-up MRI showed a normalization of myelination over time; therefore, we could speculate that

myelination in patients with *PURA* syndrome is not absent but delayed. Further follow-up MRI data in additional patients will clarify this issue. Experimental studies in KO mouse have provided conflicting results, showing in some reports decreased signals from myelin and white matter tracts both in the subcortical white matter and in the cortex compared with wild-type littermates and reduced neuron density both in the cortex and in the cerebellum.<sup>3</sup> Other studies in KO mice showed an enlarged brain size associated with a phenotype showing ataxia and continuous tremor.<sup>33</sup> The finding of a megalencephalic brain has been interpreted as resulting from a prolongation of neuronal precursor cell proliferation during postnatal development, an explanation that further supports the role of *Purα* in postnatal brain development.<sup>3</sup>

In a computational analysis of photographs of 34 *PURA* syndrome individuals, it was found that affected patients shared a similar gestalt, including a hypotonic face and high anterior hairline.<sup>7</sup> In addition to those features, we expand the facial gestalt to include a flat nasal bridge with a widened and triangular nasal tip, thickened nostrils, a well-defined philtrum, heavy eyebrows, and periorbital fullness, present in a subset of individuals. Many syndromes have recognizable facial features that are highly informative to clinical geneticists.<sup>34-36</sup> Although *PURA* is not an easily recognizable syndrome, a detailed description of dysmorphic features and an understanding of how the features change over time can help clinicians identify further cases.

In total, 59.2% of the patients analyzed in this study have epilepsy, with age at onset ranging from the first day of life to 18 years. In the heterozygous mouse model, seizures/epilepsy are constant features in all animals.<sup>3</sup> Most of the patients presented with a combination of seizure types that could be both focal and generalized in the same patient. Our results show that the most common seizure types are myoclonic, GTC, and focal with secondary generalization. A not negligible group of patients presented with reflex seizures whose semiology includes myoclonic, atonic, and “absence-like” manifestations. Various stimulus types (including visual, auditory, sensory, and painful stimulations), were reported as effective in triggering seizures. In some patients, a reflex mechanism was observed only for a transitory period; therefore, we cannot exclude that the occurrence of reflex seizures in patients with *PURA* syndrome might be underestimated, particularly in patients with severe ID, high seizure frequency, co-occurrence of nonepileptic paroxysmal motor disorders, and limited monitoring.

The EEG also showed a mixture of focal/multifocal and generalized epileptic abnormalities. Of interest, an excessive activation of EEG epileptic discharges during sleep, resembling an ESES EEG pattern, was reported in 4 children; whether this sleep activation was associated with further cognitive/behavioral deterioration as in ESES syndrome was not possible to demonstrate because of the severity of the baseline cognitive status. Our findings suggest that *PURA* might add to the growing list of DEE-associated genes that

can present during the course of the disease with an ESES-like EEG pattern.<sup>37,38</sup> Hypsarrhythmia and burst suppression were rarely observed. A syndromic classification that considered both the clinical and EEG features was possible only in 6 patients, with 4 of them presenting a clinical picture compatible with a Lennox-Gastaut syndrome and the other 2 with West syndrome. The remaining patients with epilepsy could be broadly diagnosed as presenting with a DEE, in most cases with a severe course.

In total, 40.9% of patients in our cohort did not present with epilepsy. However, because of the broad age range of epilepsy onset (from the first day of life up to 18 years) and the age at inclusion in this study, only 1 patient without epilepsy was older than 18 years. Thus, we cannot exclude that a proportion of nonepileptic patients will develop epilepsy later in the course of their disease, in particular those nonepileptic patients who already present epileptic abnormalities in their EEG. This hypothesis may be supported by the statistical significant difference in the age at inclusion in our study of the subgroup of patients with epilepsy who were older than the subgroup without epilepsy. The nonepileptic patient older than 18 years was retrieved in the literature, and he was a 19-year-old man who presented with developmental delay since birth; he was able to walk by the age of 4 years and to communicate with a one-two word vocabulary.<sup>13</sup> He had a normal MRI and normal EEG (the last one at 14 years of age).<sup>13</sup> He carried a de novo recurrent missense variant, p.(Ile188Thr), as well as an Xp22.31 duplication.<sup>13</sup> In the literature, another patient with the same missense variant also had no seizure activity at the age of 8 years,<sup>2</sup> whereas a third patient with a frameshift variant at the same position had GTCs with an unknown age at onset.<sup>5</sup> Thus, at present, an estimation of the prevalence of epilepsy in the *PURA* population is not reliable because most of the reported patients are children, who could still present with epilepsy at a later age. In line with this, pediatric epilepsy cohort studies have not identified *PURA* as one of the more common causes of epilepsy in infancy.<sup>39</sup> However, in a recent study from our center, we identified a pathogenic variant in *PURA* as the underlying cause of epilepsy in 1% of adult patients.<sup>40</sup>

Our results show that 66.6% of the patients with *PURA* syndrome suffer from drug-refractory epilepsy. Although some ASMs, such as VPA, LEV, and TPM, showed favorable results in some patients, the same drugs were ineffective in other patients, currently making treatment recommendations for patients with *PURA* syndrome difficult. Further studies elucidating the underlying pathophysiologic mechanisms in *PURA*-related epilepsy will be crucial, including (heterozygous) animal models to test possible novel drugs and to identify possible precision medicine approaches.

In this study, we expand the genetic landscape of *PURA* by including 38 new variants. In all patients where segregation analysis was completed, the variants arose de novo. In addition, most of the patients have variants that are loss of function per se, such as frameshift or indel variants. This is supported by a pLoF

(predicted loss-of-function) score of 8.9 (pLi 0.94), suggesting that the *PURA* gene is intolerant to loss of function variants (gnomad.broadinstitute.org/). Thus, haploinsufficiency seems to be the most likely functional defect underlying the disease. Although missense variants have not been tested functionally, the evidence that patients with missense variants display phenotypes similar to the patients with loss of function variants points toward similar functional effects.

Most of the variants were located within the PUR repeats, which underline the importance of these repeats for the function of *PURA*.<sup>41</sup> Some variants, both nonsense and missense, are still located outside the PUR repeats, suggesting that these areas of the gene are also crucial for the correct functioning of *PURA*.

Phenotypic variability was seen even within variants; where the same variant was seen in patients with and without epilepsy. This might reflect other factors, such as epigenetic modulators, or it might be simply due to a difference in age of the patients (see above).

Previously, a single patient with a variant in the C-terminal of the protein was described with a milder phenotype compared with other patients, which led the authors to suggest that it is unlikely for variants in the far end of the C-terminal to affect protein folding or nucleic acid binding.<sup>7</sup> However, our results do not support this hypothesis because also patients with variants in this part of the gene (such as #42) seem to display an equally severe *PURA* phenotype. There were also no apparent differences between variants in the 5' and 3' end of the protein. No clear genotype-phenotype associations emerged from the analysis of our cohort.

Our study further defines and expands the phenotypic and genotypic spectrum of the *PURA*-related DEE. Some clinical features, especially in the neonatal age, including hypotonia, feeding, and respiratory difficulties, are characteristic and should raise the suspicion of *PURA*, prompting genetic screening. In our cohort, more than 60% of patients have epilepsy, characterized by a very wide range of age at onset, from the neonatal period up to early adulthood; therefore, it cannot be excluded that a further fraction of patients, still in their childhood and not presenting epilepsy yet, will develop epilepsy later in their disease course. The epilepsy featured a wide spectrum of seizure types, including both focal, generalized seizures, and reflex seizures, refractory to currently available ASMs in the great majority of patients. Finally, our study failed to identify genotype-phenotype associations. Additional studies investigating the functions of *PURA* and the pathophysiologic mechanism underlying the *PURA*-related DEE are needed to guide the search for more effective and possibly targeted treatments.

## Acknowledgment

The authors are deeply grateful for the collaboration and support from all the *PURA* families, and the authors wish to acknowledge the *PURA* foundation for their tireless work and commitment to advance the knowledge on *PURA* syndrome.

The authors thank Diana Baralle for inclusion of patients and Dierk Niessing and Robert Janowski for their invaluable support and comments on the manuscript. The authors thank the following for their contributions to the study: Deborah Mitchell-Langlois. The authors thank Jean-François Deleuze, Anne Boland-Augé, and Robert Olaso for the collaboration CEA/JACOB/CNRGH—CHU de Dijon—Inserm.

## Study Funding

The open access for this paper was funded by the PURA Syndrome Foundation. J. Buratti received research funding as a site investigator from Alexion, AveXis, Biogen, CSL Behring, Cytokinetics, Fibrogen, Pfizer, PTC Therapeutics, Sarepta, Summit, and WaVe. I. Helbig was supported by The Hartwell Foundation through an Individual Biomedical Research Award. This work was also supported by the National Institute for Neurological Disorders and Stroke (K02 NS112600), including support through the Center Without Walls on ion channel function in epilepsy (“Channelopathy-associated Research Center”, U54 NS108874), the Eunice Kennedy Shriver National Institute of Child Health and Human Development through the Intellectual and Developmental Disabilities Research Center (IDDR) at Children’s Hospital of Philadelphia and the University of Pennsylvania (U54 HD086984), and by intramural funds of the Children’s Hospital of Philadelphia through the Epilepsy NeuroGenetics Initiative (ENGIN). Research reported in this publication was also supported by the National Center for Advancing Translational Sciences of the NIH under Award Number UL1TR001878. The content is solely the responsibility of the authors and does not necessarily represent the official views of the NIH. This project was also supported in part by the Institute for Translational Medicine and Therapeutics’ (ITMAT) Transdisciplinary Program in Translational Medicine and Therapeutics at the Perelman School of Medicine of the University of Pennsylvania. The study also received support through the EuroEPINOMICS-Rare Epilepsy Syndrome (RES) Consortium, which provided the capacity for exome sequencing, by the German Research Foundation (HE5415/3-1 to I. Helbig) within the EuroEPINOMICS framework of the European Science Foundation, by the German Research Foundation (DFG; HE5415/5-1 and HE5415/6-1 to I. Helbig), by the DFG Research Unit FOR2715 (He5415/7-1 to I. Helbig), and by the Genomics Research and Innovation Network (GRIN, grinnetwork.org). I. Helbig also received support through the International League Against Epilepsy.

## Disclosure

J. Buratti has worked as a consultant for Alexion, Audentes, AveXis, Biogen, Cytokinetics, Genentech, Momenta, PTC Therapeutics, Sarepta, and WaVe. The other authors report no disclosures. Go to [Neurology.org/NG](http://Neurology.org/NG) for full disclosures.

## Publication History

Received by *Neurology: Genetics* November 3, 2020. Accepted in final form June 29, 2021.

## Appendix Authors

Name	Location	Contribution
<b>Katrine M. Johannesen, MD, PhD</b>	Department of Epilepsy Genetics and Personalized Treatment, The Danish Epilepsy Centre Filadelfia, Dianalund, Denmark Institute for Regional Health Research, University of Southern Denmark, Odense, Denmark	Drafting/revision of the manuscript for content, including medical writing for content; Major role in the acquisition of data; Study concept or design; Analysis or interpretation of data
<b>Elena Gardella, MD, PhD</b>	Department of Epilepsy Genetics and Personalized Treatment, The Danish Epilepsy Centre Filadelfia, Dianalund, Denmark Institute for Regional Health Research, University of Southern Denmark, Odense, Denmark	Major role in the acquisition of data; Analysis or interpretation of data
<b>Cathrine E. Gjerulfsen, MD</b>	Department of Epilepsy Genetics and Personalized Treatment, The Danish Epilepsy Centre Filadelfia, Dianalund, Denmark Institute for Regional Health Research, University of Southern Denmark, Odense, Denmark	Major role in the acquisition of data
<b>Allan Bayat, MD</b>	Department of Epilepsy Genetics and Personalized Treatment, The Danish Epilepsy Centre Filadelfia, Dianalund, Denmark	Drafting/revision of the manuscript for content, including medical writing for content
<b>Rob P.W. Rouhl, MD</b>	Department of Neurology, Maastricht University Medical Centre (MUMC+), Maastricht, Netherlands Academic Centre for Epileptology Kempenhaeghe/MUMC+, Maastricht, Netherlands School for Mental Health and Neuroscience, Maastricht University, Maastricht, the Netherlands	Drafting/revision of the manuscript for content, including medical writing for content; Major role in the acquisition of data
<b>Margot Reijnders, MD</b>	Department of Clinical Genetics, Maastricht University Medical Center, Maastricht, the Netherlands	Major role in the acquisition of data
<b>Sandra Whalen, MD</b>	APHP, Sorbonne Université, Hôpital Armand Trousseau, UF de Génétique Clinique, Centre de Référence Anomalies du Développement et Syndromes Malformatifs, Paris, France	Major role in the acquisition of data
<b>Boris Keren, MD, PhD</b>	Department of Genetics, Pitié-Salpêtrière hospital, APHP, Sorbonne Université, Paris, France	Major role in the acquisition of data
<b>Julien Buratti, MSc</b>	Department of Genetics, Pitié-Salpêtrière hospital, APHP, Sorbonne Université, Paris, France	Major role in the acquisition of data
<b>Thomas Courtin, MD</b>	Department of Genetics, Pitié-Salpêtrière hospital, APHP, Sorbonne Université, Paris, France	Major role in the acquisition of data



## Appendix (continued)

Name	Location	Contribution
<b>Klaas J. Wierenga, MD</b>	Department of Clinical Genomics, Mayo Clinic Florida, Jacksonville	Major role in the acquisition of data
<b>Bertrand Isidor, MD</b>	Service de Génétique Médicale, CHU de Nantes, France	Major role in the acquisition of data
<b>Amélie Piton, MD</b>	Service de Génétique Médicale, CHU de Nantes, France	Major role in the acquisition of data
<b>Laurence Faivre, MD</b>	Centre de Référence Anomalies du Développement et Syndromes Malformatifs, FHU TRANSLAD, CHU Dijon, Dijon, France; INSERM UMR1231, GAD team, Université de Bourgogne-Franche Comté, Dijon, France	Major role in the acquisition of data
<b>Aurore Garde, MD</b>	Centre de Référence Anomalies du Développement et Syndromes Malformatifs, FHU TRANSLAD, CHU Dijon, Dijon, France; INSERM UMR1231, GAD team, Université de Bourgogne-Franche Comté, Dijon, France	Major role in the acquisition of data
<b>Sébastien Moutton, MD</b>	Centre de Référence Anomalies du Développement et Syndromes Malformatifs, FHU TRANSLAD, CHU Dijon, Dijon, France; INSERM UMR1231, GAD team, Université de Bourgogne-Franche Comté, Dijon, France	Major role in the acquisition of data
<b>Frédéric Tran-Mau-Them, MD</b>	INSERM UMR1231, GAD team, Université de Bourgogne-Franche Comté, Dijon, France; Unité Fonctionnelle d'innovation diagnostique des maladies rares, Pôle de Biologie, FHU-TRANSLAD, CHU Dijon Bourgogne, Dijon, France	Major role in the acquisition of data
<b>Anne-Sophie Denommé-Pichon, MD</b>	Service de Génétique Médicale, CHU de Nantes, France	Study concept or design
<b>Christine Coubes, MD</b>	Department of Medical Genetics, Rare Diseases and Personalized Medicine, CHU Montpellier, Montpellier, France	Major role in the acquisition of data
<b>Austin Larson, MD</b>	Childrens Hospital Colorado, Anschutz Medical Campus, Aurora, CO	Major role in the acquisition of data
<b>Michael J. Esser, MD</b>	Division of Clinical Neuroscience, Department of Pediatrics, Alberta, Canada	Major role in the acquisition of data

## Appendix (continued)

Name	Location	Contribution
<b>Juan Pablo Appendino, MD</b>	Division of Clinical Neuroscience, Department of Pediatrics, Alberta, Canada; Alberta Childrens Hospital, Cumming School of Medicine, University of Calgary, Calgary, Alberta, Canada	Major role in the acquisition of data
<b>Walla Al-Hertani, MD</b>	Department of Pediatrics, Division of Genetics and Genomics, Boston Childrens Hospital and Harvard Medical School, Boston, MA	Major role in the acquisition of data
<b>Beatriz Gamboni, MD</b>	Instituto de Neurología Infanto Juvenil, Neuroinfan, Mendoza, Argentina	Major role in the acquisition of data
<b>Alejandra Mampel, MD</b>	Instituto de Genetica-Hospital Universitario, Universidad Nacional de Cuyo, Mendoza, Argentina	Major role in the acquisition of data
<b>Lía Mayorga, MD, PhD</b>	Instituto de Histología y Embriología de Mendoza (IHEM), Universidad Nacional de Cuyo, Mendoza, Argentina	Major role in the acquisition of data
<b>Alessandro Orsini, MD, PhD</b>	Azienda Ospedaliera Universitaria Pisana, Pisa, Italy	Major role in the acquisition of data
<b>Alice Bonuccelli, MD</b>	Neuropaediatric Section, Pediatric Department, Santa Chiara University Hospital, Pisa, Italy	Major role in the acquisition of data
<b>Agnese Suppiej, MD</b>	Department of Medical Sciences- Pediatric Section, University of Ferrara, Ferrara, Italy	Major role in the acquisition of data
<b>Julien Van-Gils, MD</b>	CHU Bordeaux, Bordeaux, France	Major role in the acquisition of data
<b>Julie Vogt, MD</b>	West Midlands Regional Genetics Service, Birmingham Women's and Children's Hospital, Birmingham, UK	Major role in the acquisition of data
<b>Simona Damioli, MD</b>	Child Neuropsychiatric Division, Spedali Civili, Brescia, Italy	Major role in the acquisition of data
<b>Lucio Giordano, MD</b>	Child Neuropsychiatric Division, Spedali Civili, Brescia, Italy	Major role in the acquisition of data
<b>Stephanie Moortgat, MD, PhD</b>	Institut de Pathologie et de Génétique (IPG), Gosselies, Belgium	Major role in the acquisition of data
<b>Elaine Wirrell, MD</b>	Divisions of Child and Adolescent Neurology and Epilepsy, Department of Neurology, Mayo Clinic, Rochester, MN	Major role in the acquisition of data
<b>Sarah Hicks, MD</b>	Oxford Centre for Genomic Medicine, Oxford, United Kingdom	Major role in the acquisition of data

Continued

## Appendix (continued)

Name	Location	Contribution
<b>Usha Kini, MD</b>	Oxford University Hospitals NHS Trust, Oxford, United Kingdom	Major role in the acquisition of data
<b>Nathan Noble, DO</b>	Blank Children's Developmental Center, Unity Point Health, West Des Moines, IA	Major role in the acquisition of data
<b>Helen Stewart, MD</b>	Oxford Centre for Genomic Medicine, Oxford, United Kingdom	Major role in the acquisition of data
<b>Shailesh Asakar, MD</b>	Sutter Medical Centre, Sacramento, CA	Major role in the acquisition of data
<b>Julie S. Cohen, MD</b>	Kennedy Krieger Institute, Baltimore, MD	Major role in the acquisition of data
<b>Sakku Bai R. Naidu, MD</b>	Johns Hopkins University, Baltimore, MD	Major role in the acquisition of data
<b>Ashley Collier, MD</b>	Provincial Medical Genetics Program, St. Johns Medical Center, NL, Canada	Major role in the acquisition of data
<b>Eva H. Brilstra, MD</b>	University Medical Center Utrecht, Utrecht, the Netherlands	Major role in the acquisition of data
<b>Mindy H. Li, MD</b>	Rush University Medical Center, Chicago, IL	Major role in the acquisition of data
<b>Casey Brew, MD</b>	Rush University Medical Center, Chicago, IL	Major role in the acquisition of data
<b>Stefania Bigoni, MD</b>	Medical Genetic Unit, Maternal and Child Dept, Ferrara University Hospital, Ferrara, Italy	Major role in the acquisition of data
<b>Davide Ognibene, MD</b>	Medical Genetic Unit, Maternal and Child Dept, Ferrara University Hospital, Ferrara, Italy; Medical Science Dept, Ferrara University, Italy	Major role in the acquisition of data
<b>Elisa Ballardini, MD</b>	Neonatal Intensive Care Unit, Pediatric Section, Department of Medical Sciences, Ferrara University, Ferrara, Italy	Major role in the acquisition of data
<b>Claudia Ruivenkamp, MD</b>	Department of Clinical Genetics, LUMC, Leiden, the Netherlands	Major role in the acquisition of data
<b>Raffaella Faggioli, MD</b>	Pediatric Unit, Maternal and Child Dept, Ferrara University Hospital, Ferrara, Italy	Major role in the acquisition of data
<b>Alexandra Afenjar, MD</b>	APHP Trousseau, Paris, France	Major role in the acquisition of data
<b>Diana Rodriguez, MD</b>	Service de Neuropédiatrie, Hôpital Trousseau, Sorbonne Université, APHP.SU, Paris, France	Major role in the acquisition of data
<b>David Bick, MD</b>	HudsonAlpha Institute for Biotechnology, Huntsville, AL	Major role in the acquisition of data

## Appendix (continued)

Name	Location	Contribution
<b>Devorah Segal, MD, PhD</b>	Department of Pediatrics, Weill Cornell Medicine, New York, NY	Major role in the acquisition of data
<b>David Coman, MD</b>	Queensland Children's Hospital, Brisbane, QL, Australia	Major role in the acquisition of data
<b>Boudewijn Gunning, MD</b>	Department of Neurology, Stichting Epilepsie Instellingen Nederland, Zwolle, the Netherlands	Major role in the acquisition of data
<b>Orrin Devinsky, MD</b>	Department of Neurology, NYU School of Medicine, New York, NY	Major role in the acquisition of data
<b>Laurie A. Demmer, MD</b>	Atrium Healths Levine Childrens Hospital, Charlotte, NC	Major role in the acquisition of data
<b>Theresa Grebe, MD</b>	Phoenix Childrens Hospital, Phoenix, United States and The University of Arizona College of Medicine	Major role in the acquisition of data
<b>Dario Pruna, MD</b>	Division of Child Neurology and Psychiatry, Azienda Ospedaliero Universitaria, Cagliari, Italy	Major role in the acquisition of data
<b>Ida Cursio, MD</b>	Neurology and Epileptology Unit, Pediatric Department, Brotzu Hospital Trust, Cagliari, Italy	Major role in the acquisition of data
<b>Lynn Greenhalgh, MD, MSc</b>	Liverpool Centre for Genomic Medicine, Liverpool Womens NHS Foundation Trust, Liverpool, United Kingdom	Major role in the acquisition of data
<b>Claudio Graziano, MD, PhD</b>	U.O. Genetica Medica, Policlinico S. Orsola-Malpighi, Bologna, Italy	Major role in the acquisition of data
<b>Rahul Raman Singh, MD</b>	Department of Children's neurosciences, Guys and ST. Thomas' NHS foundation trust, London United Kingdom	Major role in the acquisition of data
<b>Gaetano Cantalupo, MD</b>	Department of Child Neuropsychiatry, University of Verona, Italy	Major role in the acquisition of data
<b>Marjolaine Willems, MD</b>	Department of Medical Genetics, Rare Diseases and Personalized Medicine, CHU Montpellier, Montpellier, France	Major role in the acquisition of data
<b>Sangeetha Yoganathan, MD</b>	Christian Medical College, Vellore, India	Major role in the acquisition of data
<b>Fernanda Góes, MD</b>	Neurology Pediatric Unit, Pediatric Department, Fernandes Figueira Institute, Fiocruz, Brazil	Major role in the acquisition of data
<b>Richard J. Leventer, MD, PhD</b>	Royal Childrens Hospital, Melbourne, Australia	Major role in the acquisition of data

## Appendix (continued)

Name	Location	Contribution
<b>Davide Colavito, MD</b>	Research & Innovation S.r.l., Padova, Italy	Major role in the acquisition of data
<b>Sara Olivotto, MD</b>	Pediatric Neurology Unit, V. Buzzi Childrens Hospital, Milan, Italy	Major role in the acquisition of data
<b>Barbara Scelsa, MD</b>	Pediatric Neurology Unit, V. Buzzi Childrens Hospital, Milan, Italy	Major role in the acquisition of data
<b>Andrea V. Andrade, MD</b>	Department of Paediatrics, London Health Science Centre/Schulich School of Medicine and Dentistry, University of Western Ontario, London, ON, Canada	Major role in the acquisition of data
<b>Kelly Ratke, PhD</b>	Ambry Genetics, Aliso Viejo, CA	Major role in the acquisition of data
<b>Farha Tokarz, MD</b>	Advocate Lutheran General Hospital, Park Ridge, IL	Major role in the acquisition of data
<b>Atiya S. Khan, MD</b>	PPG Pediatric Neurology, Parkview Health, Fort Wayne, IN	Major role in the acquisition of data
<b>Clothilde Ormieres, MD</b>	Department of Medical Genetics, AP-HP, Necker-Enfants Malades Hospital, Paris, France	Major role in the acquisition of data
<b>William Benko, MD</b>	Department of Neurology, UC Davis, Sacramento, CA	Drafting/revision of the manuscript for content, including medical writing for content; Major role in the acquisition of data; Analysis or interpretation of data
<b>Karen Keough, MD</b>	Department of Pediatrics, Texas A&M University Medical School, Austin	Drafting/revision of the manuscript for content, including medical writing for content; Study concept or design; Analysis or interpretation of data
<b>Sotirios Keros, MD</b>	Department of Pediatrics, Weill Cornell Medicine, New York, NY	Drafting/revision of the manuscript for content, including medical writing for content; Major role in the acquisition of data; Analysis or interpretation of data
<b>Shanawaz Hussain, MD</b>	Leeds General Infirmary, Leeds, United Kingdom	Major role in the acquisition of data
<b>Ashlea Franques, MD</b>	Thompson River Pediatrics, Johnstown, CO	Major role in the acquisition of data
<b>Felicia Varsalone, MD</b>	Pediatric Neurology Unit, V. Buzzi Childrens Hospital, 20154 Milan, Italy	Major role in the acquisition of data
<b>Sabine Grønborg, MD</b>	Department of Neuropediatrics, University Hospital Copenhagen, Copenhagen, Denmark	Major role in the acquisition of data
<b>Cyril Mignot, MD, PhD</b>	APHP Trousseau, Paris, France	Major role in the acquisition of data

## Appendix (continued)

Name	Location	Contribution
<b>Delphine Heron, MD</b>	APHP Trousseau, Paris, France	Major role in the acquisition of data
<b>Caroline Nava, MD, PhD</b>	Department of Genetics, Pitié-Salpêtrière hospital, APHP, Sorbonne Université, Paris, France	Major role in the acquisition of data
<b>Arnaud Isapof, MD</b>	Service de Neuropédiatrie, Hopital Trousseau, Sorbonne Université, APHP.SU, Paris, France	Major role in the acquisition of data
<b>Felippe Borlot, MD</b>	Alberta Childrens Hospital, Cumming School of Medicine, University of Calgary, Calgary, Alberta, Canada; Division of Neurology, Department of Paediatrics, The Hospital for Sick Children, Toronto, Ontario, Canada	Drafting/revision of the manuscript for content, including medical writing for content; Major role in the acquisition of data
<b>Robyn Whitney, MD</b>	Division of Neurology, Department of Paediatrics, The Hospital for Sick Children, Toronto, Ontario, Canada	Drafting/revision of the manuscript for content, including medical writing for content; Major role in the acquisition of data
<b>Anne Ronan, MD</b>	Hunter Genetics Unit, Waratah, Australia	Drafting/revision of the manuscript for content, including medical writing for content; Major role in the acquisition of data
<b>Nicola Foulds, MD</b>	Wessex Clinical Genetics Service, Princess Anne Hospital, Southampton, United Kingdom	Drafting/revision of the manuscript for content, including medical writing for content; Major role in the acquisition of data
<b>Marta Somorai, MD</b>	KBO Kinderzentrum Munchen, Munich, Germany	Drafting/revision of the manuscript for content, including medical writing for content; Major role in the acquisition of data
<b>John Brandsema, MD</b>	Division of Neurology, Epilepsy Neurogenetics Initiative, Childrens Hospital of Philadelphia; Perelman School of Medicine, Philadelphia, PA	Drafting/revision of the manuscript for content, including medical writing for content; Analysis or interpretation of data
<b>Katherine L. Helbig, MSc</b>	Division of Neurology, Epilepsy Neurogenetics Initiative, Childrens Hospital of Philadelphia, PA	Major role in the acquisition of data
<b>Ingo Helbig, MD, PhD</b>	Division of Neurology, Epilepsy Neurogenetics Initiative, Childrens Hospital of Philadelphia, PA; PURA Syndrome Foundation, Greensborough, Australia; PURA Syndrome Foundation, Kansas City, MO	Drafting/revision of the manuscript for content, including medical writing for content; Major role in the acquisition of data; Analysis or interpretation of data; Obtaining funding
<b>Xilma R. Ortiz-González, MD</b>	Division of Neurology, Epilepsy Neurogenetics Initiative, Childrens Hospital of Philadelphia, PA	Major role in the acquisition of data

Continued



## Appendix (continued)

Name	Location	Contribution
<b>Holly Dubbs, MD</b>	Division of Neurology, Epilepsy Neurogenetics Initiative, Childrens Hospital of Philadelphia, PA	Drafting/revision of the manuscript for content, including medical writing for content; Major role in the acquisition of data
<b>Antonio Vitobello, PhD</b>	INSERM UMR1231, GAD team, Université de Bourgogne-Franche Comté, Dijon, France; Unité Fonctionnelle d'Innovation diagnostique des maladies rares, Pole de Biologie, FHU-TRANSLAD, CHU Dijon Bourgogne, Dijon, France	Analysis or interpretation of data; Obtaining funding
<b>Mel Anderson, MSc</b>	PURA Syndrome Foundation, Greensborough, Australia	Drafting/revision of the manuscript for content, including medical writing for content; Major role in the acquisition of data; Analysis or interpretation of data
<b>Dominic Spadafore, MSc</b>	PURA Syndrome Foundation, Greensborough, Australia; PURA Syndrome Foundation, Kansas City, MO	Major role in the acquisition of data
<b>David Hunt, MD</b>	Wessex Clinical Genetics Service, Princess Anne Hospital, Southampton, United Kingdom	Major role in the acquisition of data
<b>Rikke S. Møller, MSc, PhD</b>	Department of Epilepsy Genetics and Personalized Treatment, The Danish Epilepsy Centre Filadelfia, Dianalund, Denmark; Institute for Regional Health Research, University of Southern Denmark, Odense, Denmark	Drafting/revision of the manuscript for content, including medical writing for content; Study concept or design; Analysis or interpretation of data
<b>Guido Rubboli, MD, PhD</b>	The Danish Epilepsy Center Filadelfia/University of Copenhagen, Dianalund, Denmark	Drafting/revision of the manuscript for content, including medical writing for content; Major role in the acquisition of data; Study concept or design; Analysis or interpretation of data; Study supervision or coordination

## References

- Geer LY, Marchler-Bauer A, Geer RC, et al. The NCBI BioSystems database. *Nucleic Acids Res.* 2010;38(Data issue):D492-D496.
- Tanaka AJ, Bai R, Cho MT, et al. De novo mutations in PURA are associated with hypotonia and developmental delay. *Cold Spring Harbor Mol Case Stud.* 2015;1(1):a000356.
- Khalili K, Del Valle L, Muralidharan V, et al. Pur-alpha is essential for postnatal brain development and developmentally coupled cellular proliferation as revealed by genetic inactivation in the mouse. *Mol Cell Biol.* 2003;23(19):6857-6875.
- Barbe MF, Krueger JJ, Loomis R, Otte J, Gordon J. Memory deficits, gait ataxia and neuronal loss in the hippocampus and cerebellum in mice that are heterozygous for Pur-alpha. *Neuroscience.* 2016;337:177-190.
- Lee BH, Reijnders MRF, Abubakare O, et al. Expanding the neurodevelopmental phenotype of PURA syndrome. *Am J Med Genet A.* 2018;176(1):S6-67.
- Rodriguez-Garcia ME, Cotrina-Vinagre FJ, Arranz-Canales E, et al. A novel de novo mutation in the PURA gene associated with a new clinical finding: large brainstem. *J Genet.* 2020;99:7.
- Reijnders MRF, Janowski R, Alvi M, et al. PURA syndrome: clinical delineation and genotype-phenotype study in 32 individuals with review of published literature. *J Med Genet.* 2018;55(2):104-113.

- Lalani SR, Zhang J, Schaaf CP, et al. Mutations in PURA cause profound neonatal hypotonia, seizures, and encephalopathy in 5q31.3 microdeletion syndrome. *Am J Hum Genet.* 2014;95(5):579-583.
- Mayorga L, Gamboni B, Mampel A, Roqué M. A frame-shift deletion in the PURA gene associates with a new clinical finding: hypoglycorrhachia. Is GLUT1 a new PURA target? *Mol Genet Metab.* 2018;123(3):331-336.
- Hunt D, Leventer RJ, Simons C, et al. Whole exome sequencing in family trios reveals de novo mutations in PURA as a cause of severe neurodevelopmental delay and learning disability. *J Med Genet.* 2014;51(12):806-813.
- Rezkalla J, Von Wald T, Hansen KA. Premature thelarche and the PURA syndrome. *Obstet Gynecol.* 2017;129(6):1037-1039.
- Okamoto N, Nakao H, Niihori T, Aoki Y. Patient with a novel purine-rich element binding protein A mutation. *Congenit Anom.* 2017;57(6):201-204.
- Qiao Y, Bagheri H, Tang F, et al. Exome sequencing identified a de novo mutation of PURA gene in a patient with familial Xp22.31 microduplication. *Eur J Med Genet.* 2019;62(2):103-108.
- Trau SP, Pizoli CE. PURA syndrome and myotonia. *Pediatr Neurol.* 2020;104:62-63.
- Brown N, Burgess T, Forbes R, et al. 5q31.3 Microdeletion syndrome: clinical and molecular characterization of two further cases. *Am J Med Genet A.* 2013;161A(10):2604-2608.
- Richards S, Aziz N, Bale S, et al. Standards and guidelines for the interpretation of sequence variants: a joint consensus recommendation of the American College of Medical Genetics and Genomics and the Association for Molecular pathology. *Genet Med.* 2015;17(5):405-424.
- Scheffer IE, Berkovic S, Capovilla G, et al. ILAE classification of the epilepsies: position paper of the ILAE Commission for Classification and terminology. *Epilepsia.* 2017;58(4):512-521.
- Fisher RS, Cross JH, French JA, et al. Operational classification of seizure types by the International League Against Epilepsy: position paper of the ILAE Commission for Classification and terminology. *Epilepsia.* 2017;58(4):522-530.
- Mishra M, Del Valle L, Otte J, Darbinian N, Gordon J. Pur-alpha regulates RhoA developmental expression and downstream signaling. *J Cell Physiol.* 2013;228(1):65-72.
- Kobayashi Y, Tohyama J, Kato M, et al. High prevalence of genetic alterations in early-onset epileptic encephalopathies associated with infantile movement disorders. *Brain Dev.* 2016;38(3):285-292.
- Sanger TD, Chen D, Fehlings DL, et al. Definition and classification of hyperkinetic movements in childhood. *Mov Disord.* 2010;25(11):1538-1549.
- Gardella E, Marini C, Trivisano M, et al. The phenotype of SCN8A developmental and epileptic encephalopathy. *Neurology.* 2018;91(12):e1112-e1124.
- Papandreou A, Schneider RB, Augustine EF, et al. Delineation of the movement disorders associated with FOXP1 mutations. *Neurology.* 2016;86(19):1794-1800.
- Nakamura K, Koder H, Akita T, et al. De Novo mutations in GNAO1, encoding a Gao subunit of heterotrimeric G proteins, cause epileptic encephalopathy. *Am J Hum Genet.* 2013;93(3):496-505.
- Milh M, Villeneuve N, Chouchane M, et al. Epileptic and nonepileptic features in patients with early onset epileptic encephalopathy and STXBP1 mutations. *Epilepsia.* 2011;52(10):1828-1834.
- Gorman KM, Meyer E, Grozeva D, et al. Bi-allelic loss-of-function CACNA1B Mutations in progressive Epilepsy-dyskinesia. *Am J Hum Genet.* 2019;104(5):948-956.
- Goldman S, Wang C, Salgado MW, Greene PE, Kim M, Rapin I. Motor stereotypies in children with autism and other developmental disorders. *Dev Med Child Neurol.* 2009;51(1):30-38.
- Bakker MJ, van Dijk JG, van den Maagdenberg AM, Tijssen MA. Startle syndromes. *Lancet Neurol.* 2006;5(6):513-524.
- Hortigüela M, Fernández-Marmiessa A, Cantarín V, et al. Clinical and genetic features of 13 Spanish patients with KCN2 mutations. *J Hum Genet.* 2017;62(2):185-189.
- Bonaglia MC, Zanotta N, Giorda R, D'Angelo G, Zucca C. Long-term follow-up of a patient with 5q31.3 microdeletion syndrome and the smallest de novo 5q31.2q31.3 deletion involving PURA. *Mol Cytogenet.* 2015;8:89.
- Cooper MS, McIntosh A, Crompton DE, et al. Mortality in Dravet syndrome. *Epilepsy Res.* 2016;128:43-47.
- Johannesen KM, Gardella E, Scheffer I, et al. Early mortality in SCN8A-related epilepsies. *Epilepsy Res.* 2018;143:79-81.
- Hokkanen S, Feldmann HM, Ding H, et al. Lack of Pur-alpha alters postnatal brain development and causes megalencephaly. *Hum Mol Genet.* 2012;21(3):473-484.
- Hart TC, Hart PS. Genetic studies of craniofacial anomalies: clinical implications and applications. *Orthod Craniofac Res.* 2009;12(3):212-220.
- Ferry Q, Steinberg J, Webber C, et al. Diagnostically relevant facial gestalt information from ordinary photos. *eLife.* 2014;3:e02020.
- Basel-Vanagaite L, Wolf L, Orin M, et al. Recognition of the Cornelia de Lange syndrome phenotype with facial dysmorphism novel analysis. *Clin Genet.* 2016; 89(5):557-563.
- Kessi M, Peng J, Yang L, et al. Genetic etiologies of the electrical status epilepticus during slow wave sleep: systematic review. *BMC Genet.* 2018;19(1):40.
- Lesca G, Moller RS, Rudolf G, Hirsch E, Hjalgrim H, Szepietowski P. Update on the genetics of the epilepsy-aphasia spectrum and role of GRIN2A mutations. *Epileptic Disord.* 2019;21(5):41-47.
- Symonds JD, Zuberi SM, Stewart K, et al. Incidence and phenotypes of childhood-onset genetic epilepsies: a prospective population-based national cohort. *Brain.* 2019; 142(8):2303-2318.
- Johannesen KM, Nikanorova N, Marjanovic D, et al. Utility of genetic testing for therapeutic decision-making in adults with epilepsy. *Epilepsia.* 2020;61(6):1234-1239.
- Weber J, Bao H, Hartlmüller C, et al. Structural basis of nucleic-acid recognition and double-strand unwinding by the essential neuronal protein Pur-alpha. *eLife.* 2016;5:e11297.

# Neurology<sup>®</sup> Genetics

## ***PURA*-Related Developmental and Epileptic Encephalopathy: Phenotypic and Genotypic Spectrum**

Katrine M. Johannesen, Elena Gardella, Cathrine E. Gjerulfsen, et al.

*Neurol Genet* 2021;7;

DOI 10.1212/NXG.0000000000000613

**This information is current as of November 15, 2021**

*Neurol Genet* is an official journal of the American Academy of Neurology. Published since April 2015, it is an open-access, online-only, continuous publication journal. Copyright © 2021 The Author(s). Published by Wolters Kluwer Health, Inc. on behalf of the American Academy of Neurology. All rights reserved. Online ISSN: 2376-7839.



<b>Updated Information &amp; Services</b>	including high resolution figures, can be found at: <a href="http://ng.neurology.org/content/7/6/e613.full.html">http://ng.neurology.org/content/7/6/e613.full.html</a>
<b>References</b>	This article cites 41 articles, 3 of which you can access for free at: <a href="http://ng.neurology.org/content/7/6/e613.full.html##ref-list-1">http://ng.neurology.org/content/7/6/e613.full.html##ref-list-1</a>
<b>Citations</b>	This article has been cited by 2 HighWire-hosted articles: <a href="http://ng.neurology.org/content/7/6/e613.full.html##otherarticles">http://ng.neurology.org/content/7/6/e613.full.html##otherarticles</a>
<b>Subspecialty Collections</b>	This article, along with others on similar topics, appears in the following collection(s): <b>All Epilepsy/Seizures</b> <a href="http://ng.neurology.org/cgi/collection/all_epilepsy_seizures">http://ng.neurology.org/cgi/collection/all_epilepsy_seizures</a> <b>All Genetics</b> <a href="http://ng.neurology.org/cgi/collection/all_genetics">http://ng.neurology.org/cgi/collection/all_genetics</a> <b>Developmental disorders</b> <a href="http://ng.neurology.org/cgi/collection/developmental_disorders">http://ng.neurology.org/cgi/collection/developmental_disorders</a>
<b>Permissions &amp; Licensing</b>	Information about reproducing this article in parts (figures,tables) or in its entirety can be found online at: <a href="http://ng.neurology.org/misc/about.xhtml#permissions">http://ng.neurology.org/misc/about.xhtml#permissions</a>
<b>Reprints</b>	Information about ordering reprints can be found online: <a href="http://ng.neurology.org/misc/addir.xhtml#reprintsus">http://ng.neurology.org/misc/addir.xhtml#reprintsus</a>

*Neurol Genet* is an official journal of the American Academy of Neurology. Published since April 2015, it is an open-access, online-only, continuous publication journal. Copyright © 2021 The Author(s). Published by Wolters Kluwer Health, Inc. on behalf of the American Academy of Neurology.. All rights reserved. Online ISSN: 2376-7839.

