



HAL
open science

Phase 2 trial comparing sorafenib, pravastatin, their combination or supportive care in HCC with Child–Pugh B cirrhosis

Jean-Frédéric Blanc, Faiza Khemissa, Jean-Pierre Bronowicki, Carole Montereymard, Jean-Marc Perarnau, Vincent Bourgeois, Stéphane Obled, Meher Ben Abdelghani, Isabelle Mabile-Archambeaud, Roger Faroux, et al.

► To cite this version:

Jean-Frédéric Blanc, Faiza Khemissa, Jean-Pierre Bronowicki, Carole Montereymard, Jean-Marc Perarnau, et al.. Phase 2 trial comparing sorafenib, pravastatin, their combination or supportive care in HCC with Child–Pugh B cirrhosis. *Hepatology international*, 2021, 15 (1), pp.93-104. <10.1007/s12072-020-10120-3>. <hal-03881843>

HAL Id: hal-03881843

<https://hal.science/hal-03881843v1>

Submitted on 3 Apr 2023

HAL is a multi-disciplinary open access archive for the deposit and dissemination of scientific research documents, whether they are published or not. The documents may come from teaching and research institutions in France or abroad, or from public or private research centers.

L'archive ouverte pluridisciplinaire HAL, est destinée au dépôt et à la diffusion de documents scientifiques de niveau recherche, publiés ou non, émanant des établissements d'enseignement et de recherche français ou étrangers, des laboratoires publics ou privés.



Distributed under a Creative Commons CC BY-NC 4.0 - Attribution - Non-commercial use - International License

Phase 2 trial comparing sorafenib, pravastatin, their combination or supportive care in HCC with Child-Pugh B cirrhosis

Jean-Frédéric Blanc, CHU Bordeaux, Bordeaux, France, jean-frederic.blanc@chu-bordeaux.fr

Faiza Khemissa, CH Saint Jean, Perpignan, France, faiza.khemissa@ch-perpignan.fr

Jean-Pierre Bronowicki, CHU Nancy-Brabois, Vandoeuvre les Nancy, France, jp.bronowicki@chu-nancy.fr

Carole Montereymard, FFCD, Dijon, France, carole.monterymard@u-bourgogne.fr

Jean-Marc Perarnau, CHU Tours Hôpital Trousseau, Tours, France, jm.perarnau@chu-tours.fr

Vincent Bourgeois, Hôpital Duchenne, Boulogne-Sur-Mer, France, vincebourgeois@hotmail.com

Stéphane Obled, CHU Carémeau, Nîmes, France, stephane.obled@chu-nimes.fr

Meher Ben Abdelghani, Centre Paul Strauss, Strasbourg, France, [mbenabdelghani@strasbourg.unicancer.fr](mailto:mabenabdelghani@strasbourg.unicancer.fr)

Isabelle Mabile-Archambeaud, CHU Hôtel Dieu, Nantes, France, isabelle.archambeaud@chu-nantes.fr

Roger Faroux, CHD Vendée, La Roche-Sur-Yon, France, roger.faroux@chd-vendee.fr

Jean-François Seitz, CHU la TIMONE, Marseille, France, jseitz@ap-hm.fr

Christophe Locher, Centre Hospitalier de Meaux, Meaux, France, clocher@ghef.fr

Hélène Senellart, ICO Centre René Gauducheau, Saint-Herblain, France, Helene.senellart@ico.unicancer.fr

Anne-Laure Villing, Centre Hospitalier Auxerre, Auxerre, France, alvilling@ch-auxerre.fr

Franck Audemar, CH de la Côte Basque, Bayonne, France, faudemar@ch-cotebasque.fr

Charlotte Costentin, AP-HP Hôpital Henri Mondor, Créteil, France, charlotte.costentin@hmn.aphp.fr

Gaël Deplanque, Groupe Hospitalier Saint Joseph, Paris, France, gael.deplanque@gmail.com

Sylvain Manfredi, INSERM U1231, Université de Bourgogne - Franche-Comté, Faculté de Médecine, Dijon, France, sylvain.manfredi@chu-dijon.fr

Julien Edeline, Centre Eugène Marquis, Rennes, France, j.edeline@rennes.unicancer.fr, ORCID 0000-0002-8289-7741

for the PRODIGE 21 collaborators[#]

[#]See supplementary appendix for the list of PRODIGE 21 collaborators

Corresponding author: jean-frederic.blanc@chu-bordeaux.fr ; Hepatology, CHU Bordeaux, 1 Rue Jean Burguet (HOPITAL SAINT-ANDRE - CHU), 33000 Bordeaux

Conflict of interest:

Jean-Frédéric Blanc received honoraria from Bayer, Ipsen, Roche, outside the submitted work.

Jean-Pierre Bronowicki received honoraria from Bayer outside the submitted work.

Julien Edeline received honoraria from Roche, Bayer, Eisai, Ipsen, MSD, BMS, AstraZeneca, BTG, Amgen, Beigene, outside the submitted work.

Funding: The study was funded by the “Programme Hospitalier de Recherche Clinique” (PHRC) in 2010 (Institut National du Cancer [INCa], grant PHRC10_04-02). Pravastatin was supplied by Sanofi, France.

Ethics approval statement: This study was approved by an ethic committee and conducted under the principles of the declaration of Helsinki. The trial was approved by the Ethics Committee ‘Comité de protection des personnes Sud Ouest et Outre Mer III’ on the 23/02/2020.

Patient consent statement: All patients provided written informed consent.

Electronic word counts: 4 162 including legends and references

Number of figures: 3

Number of tables: 3

The study was referenced in [clinicaltrials.gov](https://clinicaltrials.gov/ct2/show/study/NCT01357486) (NCT01357486).

Abstract:

Background & Aims: There is limited data regarding the role for systemic treatment in patients with Hepatocellular Carcinoma with Child-Pugh B cirrhosis.

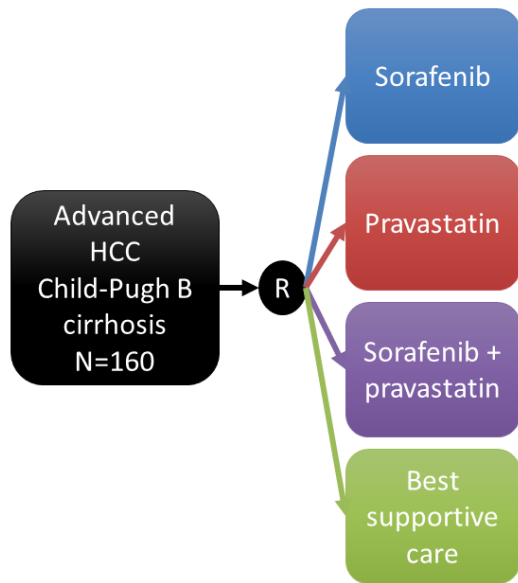
Methods: This was a multicentric prospective non-comparative randomized trial. Patients were randomized to receive sorafenib (Arm A), pravastatin (Arm B), sorafenib-pravastatin (Arm C) combination, or best supportive care (Arm D). Primary endpoint was Time To Progression (TTP), secondary endpoints included safety and Overall Survival (OS).

Results: 160 patients were randomized and 157 patients included in the final analysis. 86% of patients were BCLC C and 55% had macrovascular invasion. The safety profiles of the drugs were as expected. Median TTP was 3.5, 2.8, 2.0 and 2.2 months in arms A, B, C and D, respectively, but analysis was limited by the number of patients deceased without radiological progression (59%). Median OS was similar between the 4 arms: 3.8 [95% CI: 2.4-6.5], 3.1 [95% CI: 1.9-4.3], 4.0 [95% CI: 3.2-5.5] and 3.5 months [95% CI: 2.2-5.4] in arms A, B, C and D, respectively. Median OS was 4.0 months [95% CI: 3.3-5.5] for patients treated with sorafenib, vs 2.9 months [95% CI: 2.2-3.9] for patients not treated with sorafenib. In patients with ALBI grade 1/2, median OS was 6.1 months [95% CI: 3.8-8.3] in patients treated with sorafenib vs 3.1 months [95% CI: 1.9-4.8] for patients not treated with sorafenib.

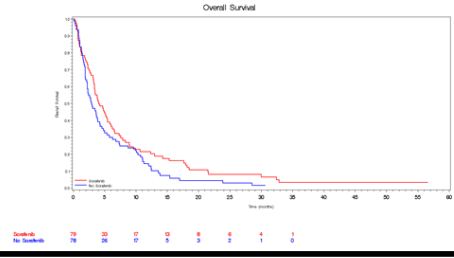
Conclusions: In the overall Child-Pugh B population, neither sorafenib nor pravastatin seemed to provide improved OS. In the ALBI grade 1/2 sub-population, our trial suggests potential benefit of sorafenib.

Keywords: HCC; sorafenib; liver functions; randomized clinical trial; ALBI; Child-Pugh

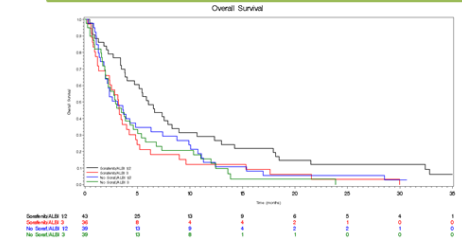
Graphical abstract



No benefit of sorafenib in the overall Child-Pugh B population



Suggested benefit of sorafenib in the ALBI grade 1/2 sub-population



Introduction:

Hepatocellular carcinoma (HCC) is the fourth cause of cancer death worldwide ¹. The mortality is rising in Western Countries ². Most HCC arise in patients with cirrhosis. In these patients, HCC and cirrhosis are both at risk of complications leading to death. Furthermore, HCC per se, due to the tumoral burden, could lead to worsening of liver functions.

Currently, there is no clear recommendation for systemic treatment of patients with Child-Pugh (CP) B cirrhosis ³⁻⁵. CP A and B cirrhosis were generally together in the treatment algorithms presented, but details in the guidelines often state that CP B should be treated only if “highly selected”, or clearly state that systemic therapies were not validated in CP B population ³⁻⁶. The ALBI grade was recently described in HCC ⁷. It allows for an objective evaluation of liver functions using only albumin and bilirubin values, and was demonstrated to provide adequate evaluation in sorafenib-treated patients ⁸⁻¹⁰.

Indeed, most phase 3 trials in HCC were either restricted to CP A population, or included very few selected CP B patients ¹¹⁻¹⁵. Sorafenib being the only drug approved for many years, an extensive literature exists as regards to the difference of activity of sorafenib in patients with CP A and B liver functions, but without randomized data. A recent meta-analysis including 1684 CP B patients from 30 studies reported a worse survival than the CP A population, with a median of only 4.6 months ¹⁶. However, the large GIDEON cohort suggested better results in the Child-Pugh B7 population than in the B8 or B9 population ¹⁷. Overall, the absence of adequately powered randomized trial do not allow to draw definitive conclusion on the potential interest of systemic treatment in this population. Results in the sorafenib population will still be important with the advent of new first-line treatments, as sorafenib will remain a second-line option.

Pravastatin was tested before the era of targeted therapy as a potential for prevention or treatment of HCC ¹⁸⁻²⁰. Statins are of particular interest because of their intrinsic action on HMG-CoA reductase, the concentration and the activity of which is increased in HCC cells. Inhibition of HMG-CoA reductase leads to depletion of mevalonate and, thus, of its products, farnesyl pyrophosphate and geranylgeranyl pyrophosphate used in the cell for post-translational modifications of many regulators of proliferation. Pravastatin has been shown to inhibit in vitro and in vivo HCC tumor growth, and has a pro-apoptotic action on tumoral liver cell lines. However, the existing literature was limited by mostly retrospective data and small randomized studies. Pravastatin was tested at the same time by our group in a phase 3 trial in the CP A population in combination with sorafenib ²¹. Due to the predicted low toxicity of the drug, we felt that testing pravastatin in the CP B population might be interesting.

We thus decided to conduct a prospective trial evaluating the administration of sorafenib, pravastatin, their combination, or BSC alone, in patients treated for HCC with CP B liver functions.

Patients and methods:

Study design and patients

The PRODIGE 21 trial was designed as a multicentre, open-label, randomised phase 2 trial. The study was conducted in 35 centres in France, within the PRODIGE (FFCD/UCGI/GERCOR) intergroup. The study was referenced in clinicaltrials.gov (NCT01357486). The trial was approved by the Ethics Committee 'Comité de protection des personnes Sud Ouest et Outre Mer III' on the 23/02/2020. The protocol is provided as supplementary material.

The main inclusion criteria were: age older than 18 years, HCC diagnosed by biopsy or by radiological criteria according to AASLD guidelines, patient non eligible to curative or loco-regional therapy, Child-Pugh Score B7 to B9, Performance Status 0 to 2, stage B or C of BCLC classification, adequate biological parameters (Hb \geq 8 g/dl, Platelets \geq 50 G/L, creatinine $<$ 2 times the upper limit of normal, Neutrophils \geq 1000/mm³). Patient with previous use of statin in the 6 months before the diagnosis of HCC or patients with previous exposure to sorafenib were excluded. Patients with myocardial infarction less than 6 months ago, uncontrolled arterial hypertension, congestive heart failure NYHA class $>$ 2, anti-arrhythmia treatment other than beta-blockers or digoxin were also excluded.

The criteria used for CP classification were those of the French recommendations (Supplementary Table 1). The ALBI score was calculated based on the published formula ⁷.

The trial was approved by an ethics committee and was conducted according to Good Clinical Practice and the Declaration of Helsinki. All participants provided written informed consent before participating in the trial.

Eligible patients were randomly assigned in 4 arms according to 1:1 ratio: Arm A, sorafenib treatment, Arm B, pravastatin treatment, Arm C, sorafenib and pravastatin treatment, Arm D, BSC only. Randomization was done by minimization techniques and was stratified according to center and BCLC classification.

Procedures

Patients allocated to sorafenib started the drug at 400mg twice a day, continuously. Subsequent dose reductions were done according to toxicities, as per local practice and label instructions. Pravastatin was given at the dose of 40mg per day, continuously. BSC was given in every arm as per local practice, no specific guidelines were provided in the protocol. Treatment was continued until progression or intolerable toxicity.

Follow-up visits occurred on a monthly basis, consisting of clinical examination, chest abdomen and pelvis CT-scan and blood tests (including liver and renal function tests, alpha-fetoprotein (AFP) monitoring). In case of progression, further treatment was at the discretion of the investigator.

Outcomes

The primary endpoint was time to progression (TTP), defined as the time between randomization and first evidence of radiological progression as assessed by mRECIST ²². Patients with no radiological progression were censored at the date of death or last follow-up.

Secondary endpoints included Overall Survival (OS), defined as the time between randomization and death, Progression-Free Survival (PFS), defined as the time between randomization and first radiological progression or death, time to treatment failure (TTF),

defined as the time between randomization and discontinuation of the treatment, objective response rate at 4 months, safety, as assessed by NCI-CTCAE v4.03, and Quality of Life (QoL), as assessed by QLQ-C30 and FACT-Hep questionnaires.

Statistical analysis

The trial was designed as a non-comparative trial, with an H0 hypothesis of median TTP of 10 weeks (2.3 months), and a goal to increase the median TTP to 18 weeks (H1, 4.1 months). This was based on the hypothesis that sorafenib efficacy in terms of control of the disease in the CP B population would be similar that seen in the CP A population, but that OS might be lower due to competitive risk of cirrhosis complications. This hypothesis was tested in each of the 3 treatment arm separately, the Arm D serving at confirming the survival hypotheses in this understudied population. A non-comparative design was chosen due to the paucity of data in this population, and the difficulty to recruit sufficient number of patients in a comparative study. With a power of 90% and an alpha risk of 5%, 36 patients were required in each arm. With a 10% estimation of loss to follow-up, we planned to include 40 patients in each arm, for a total of 160 patients included in the study.

The analyses of the primary endpoints were done on the intention-to-treat population consisting of all randomized patients. A per protocol population was defined as the population respecting the 3 main inclusion criteria (CP B, BCLC B or C, and Performance status 0 to 2) and receiving at least 4 weeks of treatment.

The survival curves were estimated using the Kaplan-Meier method.

Exploratory analyses, not initially planned in the statistical analysis plan, were also performed: analysis of patients treated with sorafenib (arms A and C) and patients not treated with

sorafenib (arms B and D), and analysis according to the liver function evaluated by the CP scores and the ALBI grade.

All authors had access to the data and had reviewed and approved the final manuscript.

Results

Characteristics of the population

160 patients were included between November 2011 and May 2016. 3 patients subsequently withdraw their consent, and 157 patients were included in the final analysis (Figure 1).

Baseline characteristics of the patients are reported on Table 1.

Safety

The median duration of treatment by sorafenib was 1.8 months in arm A and 0.8 month in arm C, the median duration of treatment by pravastatin was 2.1 months in arm B and 1.0 month in arm C. Interruption or dose reduction was applied for sorafenib in 70% in arm A and 59% in arm C, and for pravastatin in 50% in arm B and 56% in arm C.

Adverse events occurring in at least 10% of patients of any arm, related or not to study drug, as well as events of special interest (vascular adverse events and liver functions events) are presented in Table 2. Overall, the adverse events were as expected for sorafenib treatment, and many were also seen in the BSC arm.

Efficacy in the overall population

Median follow-up was 3.6, 2.8, 4.0 and 2.9 months in arms A, B, C and D, respectively. Patients experienced radiological progression and death without progression in 12 (29%) and 28 (68%); 19 (49%) and 18 (46%); 11 (28%) and 29 (73%); and 12 (32%) and 24 (65%) in arms A, B C and

D, respectively. Cause of death were considered by investigators as at least in part related to cancer and cirrhosis in 24 (63%) and 13 (34%); 30 (83%) and 6 (17%); 27 (71%) and 11 (29%); and 26 (72%) and 11 (31%) in arms A, B, C and D, respectively. Only 1 death was considered related to treatment, in the sorafenib + pravastatin arm.

Due to the high number of patients with death without progression event, analysis of TTP was limited by a low number of events in each arm. Results are presented in Table 3 and Figure 2A and 2B. Median TTP of 2.2 months in arm D was in line with our H0 hypothesis (10 weeks), and none of the other arms reached the H1 hypothesis of 18 weeks (median TTP of 3.5, 3.0 and 2.0 in arms A, B and C, respectively). No trend was seen for difference in either TTP, PFS or OS in the intent-to-treat population; results in the per protocol populations were similar, however, a trend for different PFS was suggested.

130 patients completed baseline QLQ-C30 questionnaires and were evaluated for the time to definitive deterioration of global quality of life. There was no significant difference between arms (Table 3).

A cox regression analysis of factors associated with OS was built. In univariate analysis, Performance Status less than 2, maximum tumor size 50mm or less, ALBI grade 2 vs 3, absence of metastasis, bilirubin less than 50 μ mol/L, the absence of portal vein thrombosis, AFP level less than 85 μ mol/L, Gamma Glutamyl Transferase level less than 3xULN were associated with better OS. In multivariate analysis, Performance status less than 2, maximum tumor size 50mm or less, bilirubin level less than 35 μ mol/L and the absence of portal vein thrombosis were associated with better OS.

Exploratory analysis of sorafenib-treated and non-sorafenib-treated patients in the overall population and across subgroups according to liver functions

As sorafenib is the most prescribed drug in the CP B population, we then pooled together arm A and C on the one hand, and arm B and D on the other hand, to perform exploratory analyses in patients treated with sorafenib (n=79) and patients not treated with sorafenib (n=78). No clear difference was suggested in either TTP, PFS or OS (Figure 2C and D).

We then performed exploratory subgroup analysis in patients according to liver function (Supplementary Table 2). There were more patients classified as ALBI grade 1/2 than patients with CP B7. There was about a two-fold increase in median PFS and OS in favor of sorafenib in patients with better liver function (either CP B7 or ALBI grade 1/2), which was not the case in patients with worse liver functions (Figure 3). For patients with CP B7 and ALBI grade 1/2, respectively, median OS was 6.5 months (95% CI: 4.0-9.6) and 6.1 months (95% CI: 3.8-8.3) for patients treated with sorafenib and 3.0 months (95% CI: 1.9-5.8) and 3.1 months (95% CI: 1.9-4.8) for patients not treated with sorafenib.

Discussion

The PRODIGE 21 is the first randomized trial completed in HCC specifically in the CP B population. Prospective studies are difficult to conduct in such population²³. The first result of this study is the confirmation of the poor prognosis of patients with HCC and CP B cirrhosis, with median OS ranging from 3.1 to 4.0 months across the 4 arms of the trial. This also confirms that our trial population is representative of the CP B patients seen in routine care. The second important result is that overall in the CP B population, neither sorafenib nor pravastatin were associated with a trend for better OS. The third important observation is that some trend toward benefit of sorafenib might appear when we select patients with better liver functions, namely CP B7 or ALBI grades 1/2, for whom median OS was numerically 3 months longer in patients treated with sorafenib. Even if the treatment field of HCC has clearly changed with the phase III Imbrave150 trial demonstrating superiority of the atezolizumab-bevacizumab combination over sorafenib, our results are still important to inform decision of systemic treatment, possibility with other therapies such as immunotherapy. Moreover, sorafenib will continue to play a role in patients progressing after atezolizumab-bevacizumab, a significant proportion of them having also their liver function deteriorated to CP B status. Finally, safety does not seem to be the major issue in this setting, with adverse events reported at similar frequencies as in the CP A population.

The results of the sorafenib arms are in line with previous reports in the CP B population^{16,17,24,25}. The previous studies indeed pointed at a worse prognosis in this population. However, the previous studies did not allow to estimate any potential benefit of sorafenib, as none was able to provide an adequate control group. Our study clearly indicates that when taken as a whole, the CP B population would not derive meaningful benefit from sorafenib

treatment. However, the subgroup analysis does suggest that patients with better liver function might benefit. The non-comparative nature of this phase 2 trial does not allow to draw definitive conclusions, however suggests that sorafenib should only be considered in the patients with better liver function in the CP B population. Given the evolving nature of systemic treatment in HCC, and given that the BOOST trial (NCT 01405573) has been terminated due to low accrual, there is little chance that we will have better evidence as regards as the potential benefit of sorafenib in this population. However, our trial might also inform on potential design for clinical studies with new treatment strategies involving immunotherapy.

Importantly, our trial was performed in a population with underlying liver disease of mainly alcoholic origin. This population could be more difficult to treat, in comparison to viral etiologies where successful antiviral therapies might improve liver functions. In our population, alcohol withdrawal could in some instances improve liver functions, but with less efficacy than with antiviral therapies. As such, our results might be difficult to generalize to other populations.

As regards to pravastatin, our trial did not show any benefit. This is in line with the PRODIGE 11 trial, which tested sorafenib +/- pravastatin in the advanced HCC CP A population, with a negative result ²¹.

Results of nivolumab in a CP B cohort were released at the 2018 AASLD meeting ²⁶. Waiting for publication, limited results are available. However, the reported response rate of 10% and median OS of 7.6 months reported suggest a lower efficacy than in the CP A cohort. This would advocate for the need of a randomized study of immune checkpoint inhibitor or combinations in this context.

The most used system to evaluate liver function in cirrhosis is the CP system. However, many limitations were extensively discussed about this system, especially in the context of treatment of HCC ^{7,27}, and many different versions of the CP system are in frequent use ²⁸. Conversely, ALBI was created using an evidence-based approach, includes 2 variables easily available and objective, was developed also for patients without cirrhosis, and the score can be calculated using online-tool, the grade can be easily assigned with a heat map. All these arguments advocate for incorporation of ALBI in the evaluation of patients treated for HCC.

The primary endpoint of the PRODIGE 21 trial was TTP. It was chosen at a time when expert consensus recommended TTP as the primary endpoint for phase 2 trials ²⁹. However, in retrospect this endpoint did not appear to be adequate. Firstly, TTP was never demonstrated to be a surrogate for OS in HCC. Moreover, a high proportion of our patients did not had radiological progression documented, despite a planned intensive radiological follow-up every month, due to rapid clinical deterioration. Finally, the OS or PFS endpoints are of more relevance to demonstrate some clinically-meaningful benefit.

This study has some limitations. We already discussed the non-comparative design, as well as the choice of the primary endpoint. Moreover, the ALBI analyses were not preplanned, as the score was not described at the time of conception of the trial. The trial accrued slowly and across 35 sites; we did not record the number of patients assessed for screening. However, this also can be viewed as a force to be able to complete the planned accrual, and to the generalizability of the results. Some imbalances in baseline characteristics exist between the treatment arms; however, the baseline characteristics, with the majority of the population PS >0, and a significant population with adverse prognostic factors (87% BCLC C) suggest that we are in a population representative of the daily practice CP B population. However, our

population included mainly patients with cirrhosis from alcohol consumptions, and results might not be generalizable to other populations. We used standard dose of sorafenib, while a frequent practice would be to start at a lower dose. However, the type and rates of adverse events did not seem different from what is expected. The analysis of GIDEON suggested that despite equivalent starting doses between the CP A and B cohorts (72% and 70% starting at full dose, respectively), there was in fact more dose reduction in the CP A cohort (40% vs 29%), which does not support the necessity of lower starting dose in the CP B group¹⁷. Finally, our analyses based on liver functions are exploratory.

In conclusions, the PRODIGE 21 trial results suggest that in the overall CP B population, a BSC approach should be the standard treatment. However, more appropriate selection of patients could be made by restricting the population for systemic treatment to CP B7 or ALBI grade 1/2. This should be confirmed by future studies, especially in the context of the evolutions of systemic treatment of HCC towards multiple lines of antiangiogenic therapies and immunotherapy. Our trial might inform future research in this new context.

Acknowledgments: We thank the FFCD operational team (statisticians, data managers and CRAs): Karine Le Malicot, Fadil Masskourri, Caroline Choine, Florence Guiliani, Nouredine Lasmi, Guillaume Arnould, Nathan Guet, Morgane Maury-Nègre, Hicham Fattouh, Nicolas Le Provost, Jérémie Bez, and Cécile Girault. We also thank research teams at each participating center.

Conflict of interest:

Jean-Frédéric Blanc received honoraria from Bayer, Ipsen, Roche, outside the submitted work.

Jean-Pierre Bronowicki received honoraria from Bayer outside the submitted work.

Julien Edeline received honoraria from Roche, Bayer, Eisai, Ipsen, MSD, BMS, AstraZeneca, BTG, Amgen, Beigene, outside the submitted work.

Funding: The study was funded by the “Programme Hospitalier de Recherche Clinique” (PHRC) in 2010 (Institut National du Cancer [INCa], grant PHRC10_04-02). Pravastatin was supplied by Sanofi, France.

Figures legends:

Figure 1: CONSORT diagram of inclusion of the patients in the trial.

Figure 2: Kaplan-Meier curves for (A) Progression-Free Survival (PFS) and (B) Overall Survival (OS) in the 4 arms; and Kaplan-Meier curves for (C) Progression-Free Survival (PFS) in patients treated or not by sorafenib and (D) Overall Survival (OS) in patients treated or not by sorafenib

Figure 3: Kaplan-Meier curves of (A) Overall Survival in patients treated or not with sorafenib, according to CP scores, (B) Progression-Free Survival in patients treated or not with sorafenib, according to CP scores, (C) Overall Survival in patients treated or not with sorafenib, according to ALBI grade and (D) Progression-Free Survival in patients treated or not with sorafenib, according to ALBI grade

References

1. Bray F, Ferlay J, Soerjomataram I, Siegel RL, Torre LA, Jemal A. Global cancer statistics 2018: GLOBOCAN estimates of incidence and mortality worldwide for 36 cancers in 185 countries. *CA Cancer J Clin*. 2018;68:394–424.
2. Bertuccio P, Turati F, Carioli G, et al. Global trends and predictions in hepatocellular carcinoma mortality. *J Hepatol*. 2017;67:302–309.
3. Galle PR, Forner A, Llovet JM, et al. EASL Clinical Practice Guidelines: Management of hepatocellular carcinoma. *J Hepatol*. 2018;69:182–236.
4. Heimbach JK, Kulik LM, Finn RS, et al. AASLD guidelines for the treatment of hepatocellular carcinoma. *Hepatol Baltim Md*. 2018;67:358–380.
5. Marrero JA, Kulik LM, Sirlin CB, et al. Diagnosis, Staging, and Management of Hepatocellular Carcinoma: 2018 Practice Guidance by the American Association for the Study of Liver Diseases. *Hepatol Baltim Md*. 2018;68:723–750.
6. EASL, EORTC, others. EASL–EORTC Clinical Practice Guidelines: management of hepatocellular carcinoma. *J Hepatol*. 2012;56:908–943.
7. Johnson PJ, Berhane S, Kagebayashi C, et al. Assessment of Liver Function in Patients With Hepatocellular Carcinoma: A New Evidence-Based Approach--The ALBI Grade. *J Clin Oncol*. 2015;33:550–558.
8. Ogasawara S, Chiba T, Ooka Y, et al. Liver function assessment according to the Albumin-Bilirubin (ALBI) grade in sorafenib-treated patients with advanced hepatocellular carcinoma. *Invest New Drugs*. 2015;33:1257–1262.
9. Edeline J, Blanc J-F, Johnson P, et al. A multicentre comparison between Child Pugh and Albumin-Bilirubin scores in patients treated with sorafenib for Hepatocellular Carcinoma. *Liver Int Off J Int Assoc Study Liver*. 2016;36:1821–1828.
10. Kuo Y-H, Wang J-H, Hung C-H, et al. Albumin-Bilirubin grade predicts prognosis of HCC patients with sorafenib use. *J Gastroenterol Hepatol*. 2017;32:1975–1981.
11. Llovet JM, Ricci S, Mazzaferro V, et al. Sorafenib in advanced hepatocellular carcinoma. *N Engl J Med*. 2008;359:378–390.
12. Kudo M, Finn RS, Qin S, et al. Lenvatinib versus sorafenib in first-line treatment of patients with unresectable hepatocellular carcinoma: a randomised phase 3 non-inferiority trial. *Lancet Lond Engl*. 2018;391:1163–1173.
13. Bruix J, Qin S, Merle P, et al. Regorafenib for patients with hepatocellular carcinoma who progressed on sorafenib treatment (RESORCE): a randomised, double-blind, placebo-controlled, phase 3 trial. *Lancet Lond Engl*. 2017;389:56–66.

14. Abou-Alfa GK, Meyer T, Cheng A-L, et al. Cabozantinib in Patients with Advanced and Progressing Hepatocellular Carcinoma. *N Engl J Med*. 2018;379:54–63.
15. Zhu AX, Kang Y-K, Yen C-J, et al. Ramucirumab after sorafenib in patients with advanced hepatocellular carcinoma and increased alpha-fetoprotein concentrations (REACH-2): a randomised, double-blind, placebo-controlled, phase 3 trial. *Lancet Oncol*. 2019;20:282–296.
16. McNamara MG, Slagter AE, Nuttall C, et al. Sorafenib as first-line therapy in patients with advanced Child-Pugh B hepatocellular carcinoma—a meta-analysis. *Eur J Cancer Oxf Engl* 1990. 2018;105:1–9.
17. Marrero JA, Kudo M, Venook AP, et al. Observational registry of sorafenib use in clinical practice across Child-Pugh subgroups: The GIDEON study. *J Hepatol*. 2016;65:1140–1147.
18. Zhou Y-Y, Zhu G-Q, Wang Y, et al. Systematic review with network meta-analysis: statins and risk of hepatocellular carcinoma. *Oncotarget*. 2016;7:21753–21762.
19. Kawata S, Yamasaki E, Nagase T, et al. Effect of pravastatin on survival in patients with advanced hepatocellular carcinoma. A randomized controlled trial. *Br J Cancer*. 2001;84:886–891.
20. Lersch C, Schmelz R, Erdmann J, et al. Treatment of HCC with pravastatin, octreotide, or gemcitabine—a critical evaluation. *Hepato-gastroenterology*. 2004;51:1099–1103.
21. Jouve J-L, Lecomte T, Bouché O, et al. Pravastatin combination with sorafenib does not improve survival in advanced hepatocellular carcinoma. *J Hepatol*. 2019;71:516–522.
22. Lencioni R, Llovet JM. Modified RECIST (mRECIST) assessment for hepatocellular carcinoma. *Semin Liver Dis*. 2010;30:52–60.
23. Labeur TA, Achterbergh R, Takkenberg B, Van Delden O, Mathôt R, Klümper H-J. Sorafenib for Patients with Hepatocellular Carcinoma and Child-Pugh B Liver Cirrhosis: Lessons Learned from a Terminated Study. *The oncologist*. 2019. doi:10.1634/theoncologist.2019-0718
24. Hollebecque A, Cattan S, Romano O, et al. Safety and efficacy of sorafenib in hepatocellular carcinoma: the impact of the Child-Pugh score. *Aliment Pharmacol Ther*. 2011;34:1193–1201.
25. Pressiani T, Boni C, Rimassa L, et al. Sorafenib in patients with Child-Pugh class A and B advanced hepatocellular carcinoma: a prospective feasibility analysis. *Ann Oncol Off J Eur Soc Med Oncol*. 2013;24:406–411.
26. Kudo M. Nivolumab in Patients with Child-Pugh B Advanced Hepatocellular Carcinoma (aHCC) in the CheckMate-040 Study. *AASLD Annu Meet*. 2018;LB-2.
27. Durand F, Valla D. Assessment of Prognosis of Cirrhosis. *Semin Liver Dis*. 2008;28:110–122.

28. Pugh RN, Murray-Lyon IM, Dawson JL, Pietroni MC, Williams R. Transection of the oesophagus for bleeding oesophageal varices. *Br J Surg*. 1973;60:646–649.
29. Llovet JM, Di Bisceglie AM, Bruix J, et al. Design and endpoints of clinical trials in hepatocellular carcinoma. *J Natl Cancer Inst*. 2008;100:698–711.

Table 1: Baseline characteristics

	Arm A Sorafenib (n=41)	Arm B Pravastatin (n=39)	Arm C Sorafenib + pravastatin (n=40)	Arm D BSC (n=37)	Total (n=157)
Age, median (range)	67 (51-84)	63 (43-77)	66 (44-82)	65 (47-84)	65 (43-84)
Gender: male	37 (90%)	34 (87%)	35 (88%)	35 (95%)	141 (90%)
Performance status: 0/1/2	5 (12%) / 30 (73%) / 6 (15%)	10 (26%) / 20 (51%) / 9 (23%)	6 (15%) / 23 (58%) / 11 (28%)	6 (16%) / 22 (59%) / 9 (24%)	27 (17%) / 95 (61%) / 35 (22%)
Etiology of cirrhosis: Alcohol only / alcohol + other / HBV / HCV / combined HBV and HCV / others	23 (56%) / 10 (24%) / 2 (5%) / 1 (2%) / 0 (0%) / 5 (12%)	23 (59%) / 9 (23%) / 2 (5%) / 4 (10%) / 0 (0%) / 1 (3%)	25 (63%) / 5 (13%) / 2 (5%) / 2 (5%) / 1 (3%) / 5 (13%)	24 (65%) / 7 (19%) / 0 (0%) / 1 (3%) / 0 (0%) / 5 (14%)	95 (61%) / 31 (20%) / 6 (4%) / 8 (5%) / 1 (1%) / 16 (10%)
BCLC stage B/C/D	4 (10%) / 36 (88%) / 1 (2%)	6 (15%) / 33 (85%) / 0 (0%)	5 (13%) / 35 (88%) / 0 (0%)	4 (11%) / 31 (84%) / 2 (5%)	19 (12%) / 135 (86%) / 3 (2%)
Liver involvement ≥50%	5 (12%)	6 (15%)	8 (20%)	6 (16%)	25 (16%)
Size of the largest tumor (mm), median (IQR)	45 (23-72)	60 (40-90)	46 (36-80)	55 (43-75)	53 (37-79)
Macrovascular Invasion	17 (41%)	22 (56%)	24 (60%)	23 (62%)	86 (55%)

Extra-hepatic disease	6 (15%)	7 (18%)	9 (23%)	4 (11%)	26 (17%)
CP class A/B/C	2 (5%) / 38 (93%) / 1 (2%)	0 (0%) / 39 (100%) / 0 (0%)	1 (3%) / 39 (98%) / 0 (0%)	0 (0%) / 36 (97%) / 1 (3%)	3 (2%) / 152 (97%) / 2 (1%)
CP score B7/B8/B9 in CP B patients (n=152)	15 (39%) / 16 (42%) / 7 (18%)	14 (37%) / 18 (47%) / 6 (16%)	16 (41%) / 12 (31%) / 11 (28%)	10 (28%) / 16 (44%) / 10 (28%)	55 (36%) / 62 (41%) / 34 (23%)
Ascites according to CP grade: 1/2/3	22 (54%) / 14 (34%) / 5 (12%)	24 (62%) / 9 (23%) / 6 (15%)	21 (53%) / 11 (28%) / 8 (20%)	13 (35%) / 17 (46%) / 7 (19%)	80 (51%) / 51 (32%) / 26 (17%)
Encephalopathy according to CP grade: 1/2/3	40 (98%) / 1 (2%) / 0 (0%)	37 (95%) / 2 (5%) / 0 (0%)	40 (100%) / 0 (0%) / 0 (0%)	36 (97%) / 1 (3%) / 0 (0%)	153 (97%) / 4 (3%) / 0 (0%)
Platelets (G/L), median (IQR)	132 (80-189)	127 (90-176)	116 (80-194)	160 (97-195)	132 (88-193)
Prothrombin ratio (%), median (IQR)	71 (61-82)	71 (62-80)	64 (58-74)	71 (58-77)	70 (58-80)
Albumin (g/L), median (IQR)	29 (26-33)	30 (28-32)	29 (26-31)	27 (25-31)	29 (26-32)
Total Bilirubin (mcmol/L), median (IQR)	34 (24-54)	47 (29-72)	38 (19-49)	32 (22-47)	35 (24-54)
AFP (mcg/L), median (IQR)	95 (6-1038)	1462 (48-15510)	38 (8-148)	50 (14-7791)	85 (12-4588)

Table 2: adverse events (related or not to study treatment)

	Arm A - Grade 1/2 (N=40)	Arm A - Grade 3/4/5 (N=40)	Arm B - Grade 1/2 (N=38)	Arm B - Grade 3/4/5 (N=38)	Arm C - Grade ½ (N=39)	Arm C - Grade 3/4/5 (N=39)	Arm D - Grade 1/2 (N=37)	Arm D - Grade 3/4/5 (N=37)
At least one toxicity of maximal grade	37 (92.5)	33 (82.5)	35 (92.1)	34 (89.5)	36 (92.3)	34 (87.2)	36 (97.3)	30 (81.1)
Liver functions events	34 (85.0)	26 (65.0)	33 (86.8)	30 (78.9)	34 (87.2)	29 (74.4)	35 (94.6)	28 (75.7)
Liver dysfunction	5 (12.5)	8 (20.0)	0 (0)	7 (18.4)	2 (5.1)	13 (33.3)	3 (8.1)	5 (13.5)
Ascites	1 (2.5)	6 (15.0)	4 (10.5)	5 (13.2)	3 (7.7)	3 (7.7)	4 (10.8)	3 (8.1)
ALT increase	16 (40.0)	4 (10.0)	22 (57.9)	2 (5.3)	25 (64.1)	2 (5.1)	16 (43.2)	5 (13.5)
AST increase	24 (60.0)	7 (17.5)	21 (55.3)	12 (31.6)	26 (66.7)	7 (17.9)	23 (62.2)	10 (27.0)
BILIRUBIN increase	12 (30.0)	18 (45.0)	13 (34.2)	21 (55.3)	14 (35.9)	18 (46.2)	14 (37.8)	16 (43.2)
GGT increase	14 (35.0)	15 (37.5)	16 (42.1)	16 (42.1)	21 (53.8)	11 (28.2)	17 (45.9)	18 (48.6)
Alkalin Phosphatase increase	29 (72.5)	4 (10.0)	30 (78.9)	2 (5.3)	23 (59.0)	4 (10.3)	33 (89.2)	2 (5.4)
Limbs swelling	12 (30.0)	0 (0)	12 (31.6)	1 (2.6)	6 (15.4)	0 (0)	7 (18.9)	2 (5.4)
Confusion	0 (0)	0 (0)	0 (0)	0 (0)	4 (10.3)	0 (0)	1 (2.7)	0 (0)
Vascular events	6 (15.0)	4 (10.0)	3 (7.9)	1 (2.6)	4 (10.3) (2.6)	5 (12.8)	5 (13.5)	2 (5.4)
Hypertension	3 (7.5)	2 (5.0)	0 (0)	0 (0)	2 (5.1)	1 (2.6)	2 (5.4)	0 (0)
Lower tract gastrointestinal bleeding	0 (0)	1 (2.5)	2 (5.3)	0 (0)	1 (2.6)	4 (10.3)	1 (2.7)	1 (2.7)
Upper tract gastrointestinal bleeding	2 (5.0)	1 (2.5)	0 (0)	0 (0)	0 (0)	2 (5.1)	1 (2.7)	0 (0)
Intracranial bleeding	0 (0)	1 (2.5)	0 (0)	0 (0)	0 (0)	0 (0)	0 (0)	0 (0)
Thromboembolic event	0 (0)	0 (0)	0 (0)	1 (2.6)	1 (2.6)	0 (0)	0 (0)	0 (0)
Epistaxis	2 (5.0)	0 (0)	1 (2.6)	0 (0)	0 (0)	0 (0)	1 (2.7)	0 (0)
Others events	34 (85.0)	27 (67.5)	35 (92.1)	21 (55.3)	36 (92.3)	23 (59.0)	35 (94.6)	21 (56.8)
Hand foot skin reaction	7 (17.5)	1 (2.5)	3 (7.9)	0 (0)	2 (5.1)	1 (2.6)	0 (0)	0 (0)

	Arm A - Grade 1/2 (N=40)	Arm A - Grade 3/4/5 (N=40)	Arm B - Grade 1/2 (N=38)	Arm B - Grade 3/4/5 (N=38)	Arm C - Grade ½ (N=39)	Arm C - Grade 3/4/5 (N=39)	Arm D - Grade 1/2 (N=37)	Arm D - Grade 3/4/5 (N=37)
Diarrhea	9 (22.5)	4 (10.0)	9 (23.7)	0 (0)	9 (23.1)	1 (2.6)	6 (16.2)	0 (0)
Abdominal pain	5 (12.5)	0 (0)	4 (10.5)	3 (7.9)	7 (17.9)	1 (2.6)	8 (21.6)	2 (5.4)
Nausea	6 (15.0)	2 (5.0)	3 (7.9)	0 (0)	3 (7.7)	1 (2.6)	1 (2.7)	0 (0)
Vomiting	4 (10.0)	2 (5.0)	2 (5.3)	0 (0)	3 (7.7)	1 (2.6)	1 (2.7)	1 (2.7)
Anemia	23 (57.5)	1 (2.5)	30 (78.9)	2 (5.3)	24 (61.5)	4 (10.3)	26 (70.3)	4 (10.8)
Dyspnea	5 (12.5)	1 (2.5)	4 (10.5)	1 (2.6)	1 (2.6)	1 (2.6)	7 (18.9)	3 (8.1)
CREATININE increase	10 (25.0)	0 (0)	13 (34.2)	2 (5.3)	9 (23.1)	0 (0)	16 (43.2)	1 (2.7)
White blood cells decrease	7 (17.5)	2 (5.0)	6 (15.8)	0 (0)	10 (25.6)	0 (0)	8 (21.6)	0 (0)
Neutrophil decrease	4 (10.0)	2 (5.0)	3 (7.9)	1 (2.6)	5 (12.8)	1 (2.6)	4 (10.8)	0 (0)
Weight loss	7 (17.5)	0 (0)	3 (7.9)	0 (0)	2 (5.1)	0 (0)	1 (2.7)	0 (0)
Platelets decrease	15 (37.5)	7 (17.5)	22 (57.9)	1 (2.6)	16 (41.0)	5 (12.8)	23 (62.2)	1 (2.7)
Anorexia	8 (20.0)	3 (7.5)	8 (21.1)	3 (7.9)	12 (30.8)	2 (5.1)	7 (18.9)	4 (10.8)
HYPERKALIEMIA	5 (12.5)	1 (2.5)	4 (10.5)	0 (0)	4 (10.3)	1 (2.6)	8 (21.6)	3 (8.1)
HYPOALBUMINEMIA	9 (22.5)	1 (2.5)	8 (21.1)	2 (5.3)	8 (20.5)	3 (7.7)	7 (18.9)	3 (8.1)
HYPOCALCEMIA	4 (10.0)	1 (2.5)	5 (13.2)	0 (0)	8 (20.5)	0 (0)	4 (10.8)	0 (0)
HYPONATREMIA	4 (10.0)	4 (10.0)	3 (7.9)	4 (10.5)	5 (12.8)	4 (10.3)	10 (27.0)	3 (8.1)
FATIGUE	10 (25.0)	16 (40.0)	13 (34.2)	13 (34.2)	15 (38.5)	10 (25.6)	11 (29.7)	10 (27.0)

Table 3: Efficacy results in the overall population

	Arm A Sorafenib (n=41)	Arm B Pravastatin (n=39)	Arm C Sorafenib + pravastatin (n=40)	Arm D BSC (n=37)
Intent-to-treat population				
Median TTP	3.5 months	2.8 months	2.0 months	2.2 months
Median PFS	3.3 months [95% CI: 1.9-4.8]	2.2 months [95% CI: 1.3-3.7]	3.4 months [95% CI: 2.0-4.4]	2.5 months [95% CI: 1.9-4.3]
Median OS	3.8 months [95% CI: 2.4-6.5]	3.1 months [95% CI: 1.9-4.3]	4.0 months [95% CI: 3.2-5.5]	3.5 months [95% CI: 2.2-5.4]
Median time to definitive deterioration of global quality of life	2.1 months	2.6 months	2.9 months	1.8 months
Per protocol population	Arm A Sorafenib (n=20)	Arm B Pravastatin (n=29)	Arm C Sorafenib + pravastatin (n=23)	Arm D BSC (n=35)
Median PFS	5.9 months [95% CI: 2.7-8.3]	3.6 months [95% CI: 1.9-3.9]	5.2 months [95% CI: 3.8-6.2]	2.5 months [95% CI: 1.9-4.3]
Median OS	6.5 months [95% CI: 3.4-9.6]	4.3 months [95% CI: 2.8-10.8]	5.5 months [95% CI: 4.0-9.0]	3.5 months [95% CI: 2.2-5.4]

TTP: Time to progression; PFS: Progression-Free Survival; OS: Overall Survival