



HAL
open science

Historical biogeography of Cannabis in the Iberian Peninsula: A probabilistic approach using palynological evidence

V. Rull, F. Burjachs, J.S. Carrión, Ana Ejarque, S. Fernández, J.A. López-Sáez, R. Luelmo-Lautenschlaeger, J. Ochando, S. Pérez-Díaz, J. Revelles, et al.

► To cite this version:

V. Rull, F. Burjachs, J.S. Carrión, Ana Ejarque, S. Fernández, et al.. Historical biogeography of Cannabis in the Iberian Peninsula: A probabilistic approach using palynological evidence. *Perspectives in Plant Ecology, Evolution and Systematics*, 2023, 58, pp.125704. 10.1016/j.ppees.2022.125704 . hal-03880919

HAL Id: hal-03880919

<https://hal.science/hal-03880919v1>

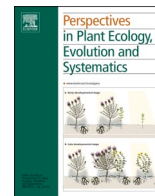
Submitted on 1 Dec 2022

HAL is a multi-disciplinary open access archive for the deposit and dissemination of scientific research documents, whether they are published or not. The documents may come from teaching and research institutions in France or abroad, or from public or private research centers.

L'archive ouverte pluridisciplinaire **HAL**, est destinée au dépôt et à la diffusion de documents scientifiques de niveau recherche, publiés ou non, émanant des établissements d'enseignement et de recherche français ou étrangers, des laboratoires publics ou privés.

Contents lists available at [ScienceDirect](https://www.sciencedirect.com)

Perspectives in Plant Ecology, Evolution and Systematics

journal homepage: www.elsevier.com/locate/ppees

Historical biogeography of *Cannabis* in the Iberian Peninsula: A probabilistic approach using palynological evidence

V. Rull^{a,*}, F. Burjachs^{b,c,d}, J.S. Carrión^e, A. Ejarque^f, S. Fernández^e, J.A. López-Sáez^g, R. Luelmo-Lautenschlaeger^f, J. Ochando^h, S. Pérez-Díazⁱ, J. Revelles^{c,d}, S. Riera^j, S. Rodríguezⁱ

^a Botanic Institute of Barcelona (CSIC), Passeig del Migdia s/n, 08038 Barcelona, Spain

^b ICREA, Passeig Lluís Companys 23, 08010 Barcelona, Spain

^c Institut Català de Paleoecologia Humana i Evolució Social (IPHES-CERCA), Zona Educacional 4, Campus Sescelades URV (Edifici W3), 43007 Tarragona, Spain

^d Universitat Rovira i Virgili, Departament d'Història i Història de l'Art, Av. Catalunya 35, 43002 Tarragona, Spain

^e Department of Plant Biology (Botany Area), Faculty of Biology, University of Murcia, Campus de Espinardo, 30100 Murcia, Spain

^f ISEM, Université Montpellier, CNRS, IRD, France

^g Research Group Environmental Archaeology, Instituto de Historia (CSIC), 28037 Madrid, Spain

^h Sapienza University of Rome, Department of Environmental Biology, Rome, Italy

ⁱ Department of Geography, Urban and Regional Planning, University of Cantabria, Av. de los Castros s/n, 39005 Santander, Spain

^j Department of History and Archaeology, Universitat de Barcelona, C. Montalegre 6, Barcelona, Spain

ARTICLE INFO

Keywords:

Cannabis
Hemp
Pollen
Iberian Peninsula
Pleistocene
Holocene
Cultivation
Retting
Dispersal
Diffusion

ABSTRACT

The tempo and mode of colonization of the Iberian Peninsula (IP) by *Cannabis sativa*, its further internal spreading and the potential cultural and environmental factors involved remain unknown. The available continental-wide European meta-analyses using pollen and archeological evidence account for only a few IP sites, insufficient for a sound assessment. This paper presents a nearly comprehensive database of almost 60 IP sites with palynological evidence of *Cannabis* and analyzes the corresponding spatiotemporal patterns. The first scattered records of this pollen type date from the Middle and Upper Paleolithic (150–12 kyr BP) and would have entered the IP by maritime Mediterranean or terrestrial continental pathways, or both. A first burst of introductions, probably in a cultivated form, would have occurred during the Neolithic (7–5 kyr BP) using similar paths. Human participation in these Neolithic introductions remains unclear but cannot be dismissed. A period of reduced *Cannabis* arrivals (mostly via maritime pathway) occurred between the Chalcolithic and the Roman Epoch (4.5–2 kyr BP), when the innermost parts of the IP were colonized (Late Bronze). A second, likely anthropogenic, introduction acceleration took place in the Middle Ages (1.5 kyr BP onward) using the Mediterranean and the continental pathways. Maximum cultivation and hemp retting activity was recorded during the Modern Ages (16th–19th centuries), coinciding with the increased demand of hemp fiber to supply the Spanish royal navy for imperial expansion and commerce. A potential link between *Cannabis* colonization/introduction bursts and climatic warmings has been observed that should be tested with future studies. Regional moisture variations seem to be less influential. Further efforts to enhance and improve the database used in this study are encouraged. The results of this paper should be compared with archeological and historical evidence to clarify the role of human migrations and cultural changes in the historical biogeography of *Cannabis* in the IP.

1. Introduction

Cannabis, currently represented by the extant species *C. sativa*, is one of the most ancient crops that has been an integral part of human life since its domestication and continues into the present (Duvall, 2014;

Warf, 2014; Small, 2015). Intensive artificial (human-mediated) selection of this plant has created a wide array of varieties and biotypes for diverse uses, including hemp fiber (cordage, textiles, paper, building materials), human and animal feeding (seeds, oil), biofuel, medicine (herbal remedies, pharmaceuticals) recreational drugs (marihuana,

Abbreviations: Ma, million years before present; (k)yr BP, (kilo)years before present; CE/BCE, Common Era/Before Common Era (formerly AD/BC).

* Corresponding author.

E-mail address: vrull@csic.es (V. Rull).

<https://doi.org/10.1016/j.ppees.2022.125704>

Received 21 September 2022; Received in revised form 6 November 2022; Accepted 23 November 2022

Available online 25 November 2022

1433-8319/© 2022 The Author(s).

Published by Elsevier GmbH. This is an open access article under the CC BY license

(<http://creativecommons.org/licenses/by/4.0/>).

hashish), and ritual activities (healing, life cycle rituals, inebriation), among others (Clarke and Merlin, 2013, 2016). Evolutionarily, *Cannabis* is thought to have originated after divergence from its sister genus *Humulus* (both belonging to the family Cannabaceae) during the Oligo-Miocene (28–21 Ma) in the NE Tibetan Plateau and differentiated into their extant subspecies (*C. sativa* subsp. *sativa* and *C. sativa* subsp. *indica*) in the Middle Pleistocene, approximately 1 Ma (McPartland, 2018; McPartland et al., 2019). Human domestication of *Cannabis* would have occurred in the early Neolithic (12 kyr BP) of Eastern Asia, which places this plant among the oldest human domesticates (Ren et al., 2021). The human diffusion of *Cannabis* occurred in postglacial times, with a first phase (10–2 kyr BP) of Eurasian dispersal, a further spread into Africa and SE Asia (2–0.5 kyr BP) and a diffusion into the Americas from Europe and Asia (1545–1945 CE) (Clarke and Merlin, 2013).

The fossil record of *Cannabis* is largely based on pollen, which is the most extensively used evidence to reconstruct the historical biogeography of this plant and to trace its cultural relationships. However, the morphological similarity between *Cannabis* and *Humulus* pollen has been a handicap for the correct identification of these genera in past records, which is a critical point as the species of these genera have very different ecological requirements and cultural connotations (Portillo et al., 2020; Rull, 2022). This is why different authors refer to the fossil/subfossil representatives of this pollen type using unspecific names such as *Cannabis/Humulus* (hereafter *C/H*), *Cannabis*-type, *Humulus*-type or Cannabaceae, among others (McPartland et al., 2018). Several morphological traits have been proposed to be useful to distinguish *Cannabis* and *Humulus* pollen (e.g., Godwin, 1967; Whittington and Gordon, 1987; Whittington and Edwards, 1989; Dörfler, 1990; Fleming and Clarke, 1998; Mercuri et al., 2002; Rull and Vegas-Vilarrúbia, 2014; Trapote et al., 2018) but there is no a universal agreement in this respect and different authors use different criteria.

McPartland et al. (2018) proposed another approach –also called the assemblage approach (Rull, 2022) – according to which *C/H* pollen found in pre-Neolithic steppe assemblages dominated by grasses, chenopods and *Artemisia* should be identified as pollen from wild *Cannabis*, whereas the same morphological pollen type found in association with elements from deciduous mesophytic forests, such as alders (*Alnus*), willows (*Salix*) and poplars (*Populus*), should correspond to wild *Humulus* pollen. According to the same authors, *C/H* pollen from Neolithic and post-Neolithic assemblages dominated by cereals (*Avena*, *Hordeum*, *Secale*, *Triticum*) and/or other anthropic indicators (notably *Centaurea*, *Polygonum* and *Plantago*) should be associated to cultivated *Cannabis*, especially when *C/H* pollen appears de novo or increases twofold over earlier records.

Using pollen evidence, McPartland et al. (2018) proposed that *Cannabis* could have reached Europe in its wild form and, hence, it could have also been domesticated in this continent. The argument is essentially chronological and is based on the occurrence of *Cannabis* pollen in Europe during Middle-Late Pleistocene (420–40 kyr BP). According to these authors, European domestication could have occurred in present-day Bulgaria (eastern Europe) during the late Neolithic-Copper age (7–5 kyr BP) and the expansion across Europe during Bronze-Iron ages (4.5–2.3 kyr BP). This was consistent with the view of Clarke and Merlin (2013), who proposed that the precursor of European hemp (related to *Cannabis sativa* subsp. *sativa*) would have been centered in the Caucasus region, from where it would have dispersed westward during the Pleistocene. This would also be chronologically consistent with the idea of Pleistocene (~1 Ma) divergence of *C. sativa* subsp. *sativa* and *C. sativa* subsp. *indica* (McPartland, 2018) and the further expansion of the first into Europe. All these considerations about the possibility of European domestication were based on the analysis of palynological evidence by McPartland et al. (2018), using the assemblage approach for the attribution of *C/H* pollen in the available studies to either one or another of these genera, in their wild and/or cultivated forms. Archaeological evidence at continental level was also consistent with this reinterpretation (McPartland and Hegman, 2018).

The same palynological meta-analysis showed that *Cannabis* pollen was already present in western Europe, including the NE Iberian Peninsula (thereafter IP), during post-glacial times (18.5–15 kyr BP), indicating that Pleistocene *Cannabis* dispersal would have occurred prior to its eastern domestication. This implies that at least two westward dispersal events of *Cannabis* could have occurred in Europe, one in wild state (18.5–15 kyr BP) and another in its cultivated form (4.5 kyr BP onward). In spite of its biogeographical and cultural relevance, the Iberian Peninsula is not well represented in analyses and meta-analyses about *Cannabis* history (Rull, 2022). For example, Clarke and Merlin (2013) used a single site (Lake Estanya) to infer the arrival of *Cannabis* into the IP by 600 CE, which strongly contrasts with the records of McPartland et al. (2018), who used 10 IP sites from peer-reviewed papers and the European pollen database (EPDB), and identified post-glacial (18.5–14.5 kyr BP) *Cannabis* pollen in two of them (Lakes Banyoles and La Roya) and Holocene pollen of this type in the other nine, ranging from 10 to 0.8 kyr BP. After reviewing the available literature on pollen-based *Cannabis* studies in the IP, Rull (2022) identified a significant lack of peninsular-wide studies that addressed the spatiotemporal trends and patterns of such an emblematic plant in such a keystone biogeographical and historical region. Therefore, it was proposed to assemble a comprehensive database of the available studies, to develop a meta-analysis aimed at unraveling the biogeographical history of *Cannabis* in the IP, since its introduction to the present, and its relationship with cultural and environmental developments (Rull, 2022). This paper introduces this new extensive database and develops the corresponding meta-analysis.

The raw data have been retrieved after an exhaustive literature review including not only records from international publications and continental-wide databases, but also results published in local/regional journals and dissertations, as well as unpublished data from the author's own data files (original counts and spreadsheets) that had not been reported in previous publications due to the scarcity of *C/H* pollen and/or the lack of interest on this pollen type at the time of publication. The final dataset contains nearly 60 sites. In this paper, this dataset is analyzed with focus on the following research questions about *Cannabis* in the IP: (i) the arrival timing, (ii) the geographical origin and the penetration pathways, (iii) the wild or domesticated nature of the incomers, (iv) the further expansion across the IP, (v) the potential relationships with climatic changes, and (vi) the onset and development of large-scale cultivation and retting. Inferences about cultural relationships need archeological and historical evidence to be properly understood and will be addressed in future studies. This paper aims to provide the palynological basis for these integrated studies.

2. The Iberian Peninsula: biogeographical and historical context

The IP is a key biogeographical region due to its high biodiversity and endemism levels, along with its transitional character between contrasting biogeographical regions, which results in a very peculiar biota in the European context. The IP is one of the main centers of Mediterranean plant diversity, together with the Anatolian, the Balkan and the Italian peninsulas (Médail and Quetzel, 1997). These peninsulas have had a fundamental role not only as biodiversity cradles but also as glacial refugia, especially during the Last Glacial Maximum (LGM) (Hewitt, 1999; Birks, 2016). It has been estimated that roughly a quarter of the LGM refugia have been located in the IP and the Balearic Islands (Médail and Diadema, 2009). In this context, the Mediterranean Region, and in particular the IP (Carrión et al., 2003, 2012, 2022; González-Sampériz et al., 2010), emerge as a singular territory in terms of geographical isolation and persistence of populations and species.

The present Iberian vascular flora is especially rich – almost 6300 species (~740 non-native), distributed in nearly 1300 genera and 190 families – and shows a high degree of specific endemism (~25% of the native flora). This represents more than 50% of the European flora. The main Iberian centers of diversity and endemism are situated in the

mountain ranges and the richest groups are Asteraceae, Fabaceae and Poaceae, whereas the Gymnosperms and the Pteridophytes are the less represented (Aedo et al., 2017). Traditionally, the IP has been subdivided into two major biogeographical domains characterized by contrasting bioclimatic features: the Mediterranean and the Eurosiberian regions. The Mediterranean region is characterized by the occurrence of Mediterranean macrobioclimates, with at least two consecutive arid months during the warmest season (summer), and dominates most of the IP (Fig. 1). The Eurosiberian region is restricted to the N and NW sectors of the peninsula (~20% of the total surface) and is characterized by wet temperate macrobioclimates, without a period of two or more consecutive with summer aridity (Rivas-Martínez et al., 2017). The Mediterranean region is dominated by species distributed across southern Europe and northern Africa, whereas the Eurosiberian region is characterized by species distributed across central and northern Europe (Aedo et al., 2017).

Land use is also strongly influenced by bioclimatic and biogeographical patterns. In the Eurosiberian region, land use is comparable to the rest of Atlantic Europe, where the traditional agrarian economy is based on cattle raising for milk and meat, combined with small-scale crops such as maize, potatoes and other vegetables, as well as fruits such as apples and chestnuts. The current landscape is a mosaic of small fields, woodlands and pastures, combined with larger areas of heathlands, forests and grasslands, especially in higher elevations. The Mediterranean Iberia is dominated by a totally different landscape resulting from land-use practices adapted to the occurrence of the climatic summer drought. In these conditions, crops not needing irrigation are favored. Annual crops, especially cereals, largely dominate the central IP, which is characterized by huge medium-elevation flat terrains. In the southern half, where climates are not so cold, typical Mediterranean

crops such as vineyards and olive groves dominate the landscape. In the Mediterranean region, extensive crops are the norm and animal husbandry occupies a subordinate position, except in some low-mountain areas, where extensive parkland landscapes dominate (Loidi, 2017). The Mediterranean biome and its climatic features are better suited than its Eurosiberian counterpart for the growth of *Cannabis*.

The oldest human remains found in the Iberian Peninsula date from approximately 1.4 to 1.2 Ma (Early Pleistocene) and correspond to *Homo antecessor*, an autochthonous species related to *H. erectus* (Bermúdez de Castro et al., 1997), and an undetermined hominin specimen known as BL02-J54-100 (Toro-Moyano et al., 2013). Heidelbergers and their relatives Neanderthals entered the IP at least 0.6 Ma (Early Paleolithic) (Carrión et al., 2011; Rosas et al., 2019), and modern humans did the same by 45–30 kyr BP (Carrión et al., 2019). The Neolithization of the IP began at approximately 5800 BCE (~7.8 kyr BP), when the former hunter-gatherer nomadic societies were replaced by more stable agricultural-based cultures (García-Martínez de Lagrán, 2015). During the Bronze Age (2700–800 BCE) and the Iron Age (800–700 BCE), a diversity of local cultures developed on the IP, which were influenced by Indo-European migrations, from the north (1st millennium BCE) and the Phoenicians, arriving by the Mediterranean coasts during the 11th century BCE. The autochthonous Iberian culture fully developed during the 7th–6th centuries BCE but colonizations and invasions from the Mediterranean area continued with the Greeks (8th century BCE), Carthaginians (5th century BCE) and the Romans, who arrived by 220 BCE and occupied the IP for almost 600 years. After a transitional phase in which the IP was occupied by the Germanic Visigoths, coming from the north, the next long-lasting invasion was that of the Muslims, who entered the IP from Africa and remained in the IP for almost eight centuries (8th–15th centuries CE). The Late Antiquity and

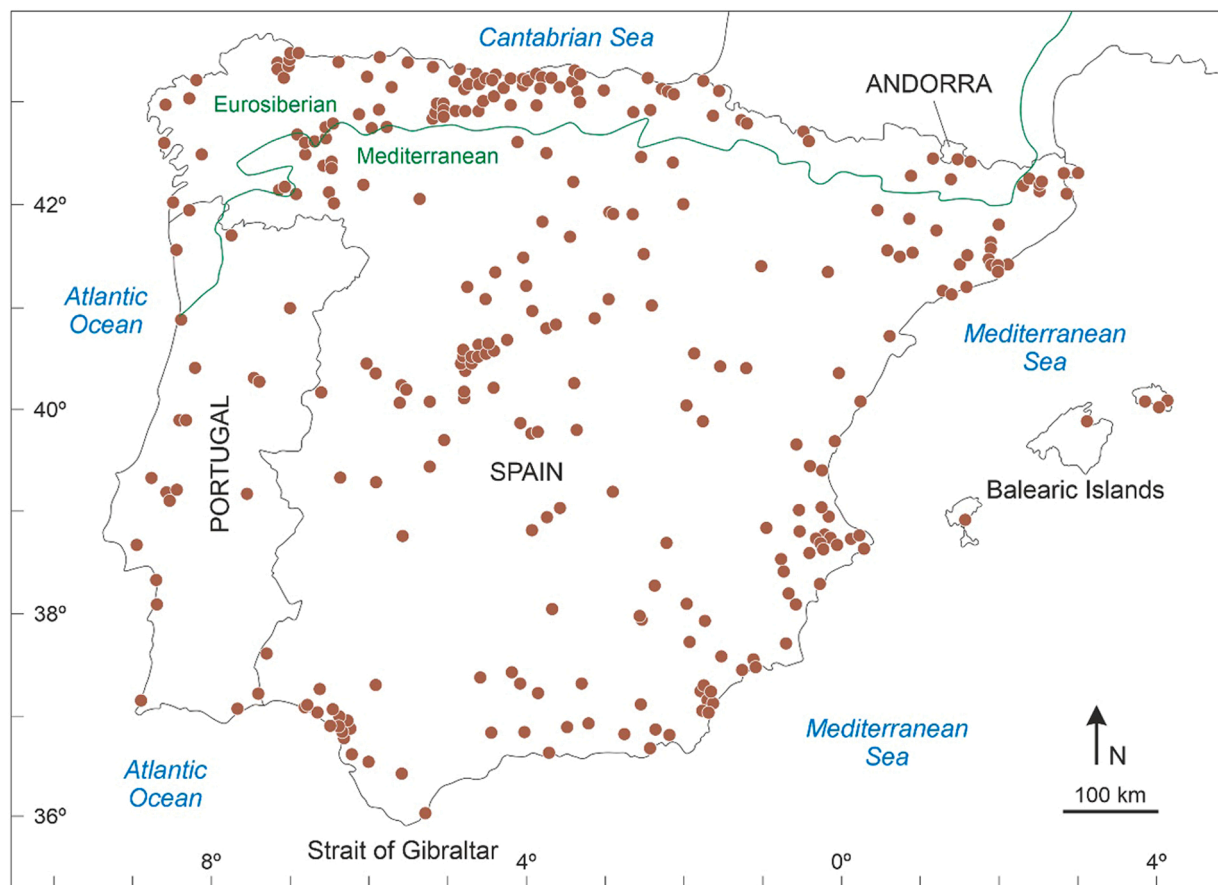


Fig. 1. Map showing the sites with Pliocene to Quaternary pollen records from the Iberian Peninsula, according to Carrión et al. (2012). Marine cores have not been included. The approximate boundary between the Eurosiberian and Mediterranean biogeographical regions is indicated by a green line.

the Middle Ages (5th-15th centuries CE) signified the progressive southward expansion of Christian cultures and the unification of monarchies, followed by the consolidation of the modern geographical and political configuration. After the Middle Ages, the kingdoms of the IP shifted from colonized to colonizer countries and expanded their dominions all over the world, with emphasis on the American continent, a situation that remained until the 19th-20th centuries CE (Marín, 1995).

This brief summary shows that the IP is a strategic spot in biogeographical, cultural and historical terms, mainly due to its geographic location, which has promoted the interaction of a diversity of cultures over prehistoric and historic times, favored by numerous and varied land and sea connections. Therefore, it might be expected that the IP

would also be a relevant place for the study of a plant such as *Cannabis*, which has been subjected to natural and human-mediated dissemination.

3. Methods

The newly obtained database for the presence and abundance of *C/H* pollen in the IP, in its first version called CHIP 1.0, consists of 56 sites situated in the IP and the Balearic Islands, including localities from Spain, Portugal and Andorra. The initial basis for the assembling of this database was the first version of the Iberian Paleoflora and Paleovegetation (Carrión et al., 2012), whose most recent updating is in

Table 1

Data used for the spatiotemporal analysis of *Cannabis/Humulus* pollen across the Iberian Peninsula, according to the original references (see Fig. 2 for the location of sites and the Supplementary Material for more details). OP, occurrence pattern (C, continuous; D, discontinuous; O, occasional; S, single occurrence); MA, maximum abundance (+, <1%); FA, first appearance (according to the original references). ND, no data.

Site (code)	Lat N	Long	OP	MA (%)	FA	Period	References
Addaia (AD)	39°59'23"	4°12'22"E	O	+	2500 BCE	Chalcolithic	Servera-Vives et al. (2018)
Alcúdia (AL)	39°47'48"	03°06'24"E	D	+	6270 ¹⁴ C BP	Neolithic	Burjachs et al. (1994, 2017)
Algendar (AG)	39°56'26"	03°57'31"E	C	+	9000 cal BP	Mesolithic	Burjachs et al. (2017)
Antas (AN)*	37°12'30"	01°49'25"W	S	ND	ND	Mesolithic	Pantaleón-Cano et al. (2003)
Asperillo (AS)	37°02'34"	06°38'04"W	S	+	24,800–23,200 cal BP	Upper Paleolithic	Fernández et al. (2021)
As Pontes (AP)	43°21'	07°29'W	S	10	3500 BCE	Neolithic	López-Sáez et al. (2003a, 2003b)
Aulaga (AU)	36°59'51"	06°25'49"W	O	+	8000–7000 cal BP	Mesolithic	Manzano et al. (2018)
Banyoles 1 (BA1)	42°07'34"	02°45'32"E	D	+	31,000 cal BP	Upper Paleolithic	Pérez-Obiol and Julià (1994)
Banyoles 2 (BA2)	42°07'34"	02°45'32"E	S	+	ND	Neolithic	Revelles et al. (2016)
Banyoles 3 (BA3)*	42°07'45"	02°45'07"E	D	+	8300 cal BP	Mesolithic	Revelles et al. (2015)
Besós (BE)	41°24'	02°15'E	C	+	500 CE	Medieval	Riera and Palet (2005, 2008)
Bolomor (BO)	39°03'	00°15'W	O	+	150 kyr BP	Middle Paleolithic	Ochando et al. (2019)
Cañamares (CA)	41°11'59"	02°57'25"W	S	+	1450 CE	Medieval	Currás (2012)
Carcavai (CR)	37°03'35"	08°04'48"W	O	+	4500 cal BP	Chalcolithic	Schneider et al. (2010, 2016)
Castelló (CS)	42°16'48"	03°06'09"E	C	+	500 CE	Medieval	Ejarque et al. (2016)
Creixell (CX)	41°09'41"	01°27'16"E	D	+	5000 cal BP	Neolithic	Burjachs and Schulte (2003), Burjachs (2012)
Cubelles (CU)	41°13'	01°39'E	D	+	5000 ¹⁴ C BP	Neolithic	Riera and Esteban (1997), Burjachs (2012)
Cueto Espina (CE)*	43°04'01"	03°55'06"W	D	5	5720 cal BP	Neolithic	Rodríguez-Coterón (PhD, unpublished)
Eivissa (EI)	38°55'01"	01°27'08"E	S	+	650 cal BP	Medieval	Yll et al. (2009), Carrión et al. (2012)
Eix (EX)*	38°10'28"	00°45'10"W	D	+	9420 cal BP	Mesolithic	Carrión et al. (2012)
Empúries (EM)	42°16'53"	03°07'13"E	D	+	3800 cal BP	Chalcolithic	Burjachs et al. (2005), Burjachs (2012)
Estanya 1 (ET1)	42°01'44"	00°31'44"E	C	25	600 CE	Medieval	Riera et al. (2004, 2006)
Estanya 2 (ET2)	42°01'44"	00°31'44"E	C	5	1000 cal BP	Medieval	Morellón et al. (2011), González-Sampérez et al. (2017)
Estanyons (EN)	42°28'50"	01°37'45"E	O	+	7000 cal BP	Neolithic	Miras et al. (2007), Ejarque et al. (2010)
Fronteras (FR)	40°14'15"	03°41'48"E	S	+	ND	ND	Macías et al. (1996)
Gallicantá (GA)	40°58'25"	01°30'22"W	D	+	1110 CE	Medieval	Burjachs et al. (1996)
Gesaleta (GE)*	42°58'54"	01°34'17"W	O	+	11,420–10,940 cal BP	Upper Paleolithic	Ruiz-Alonso et al. (2019)
Gran Dolina (GD)	42°21' 07"	03°31'12"W	S	+	ND	Middle Pleistocene	García-Antón (1989)
Grau (GR)*	39°56'53"	04°15'31"E	S	+	1970 cal BP	Roman	Carrión et al. (2012), Burjachs et al. (2017)
Gusó (GU)	40°05'31"	3° 05' 23" E	O	+	4000 ¹⁴ C BP	Chalcolithic	Blech et al. (1998)
La Cruz (LC)	39°59'16"	01°52'25"W	D	+	> 1350 CE	Medieval	Burjachs (1996), Julià et al. (1998)
La Roya (LR)	42°13'00"	06°46'00" W	D	+	14,500–10,500 cal BP	Upper Paleolithic	Allen et al. (1996), Muñoz-Sobrinó et al. (2013, 2018)
Mirador (MI)	42°20'58"	03°30'33" W	S	+	5900–5700 cal BP	Neolithic	Expósito (2006)
Montcortès (MO)	42°19'50"	00°59'41" E	C	60	600 CE	Medieval	Rull et al. (2021a, 2021b), Trapote et al. (2018)
Orris Setut (OS)	42°28'57"	01°39'01" E	ND	+	1500 CE	Modern Age	Ejarque et al. (2010)
Perales (PS)	40°19'25"	03°39'26" E	O	+	ND	Late Bronze Age	Macías et al. (1996)
Pocito Chico (PC)	36°40'43"	06°14'51"W	S	5	ND	Neolithic	López-Sáez et al. (2001, 2002)
Port Lligat 1 (PL1)	42°17'30"	03°17'24"E	D	5	1530 CE	Modern Age	López-Sáez et al. (2009)
Port Lligat 2 (PL2)	42°17'37"	03°17'25"E	C	+	4800 cal BP	Chalcolithic	López-Merino et al. (2017)
Porter (PT)*	39°52'14"	03°17'25"E	D	+	5570–5400 cal BP	Neolithic	Yll et al. (1997)
Pradell (PR)	42°17'20"	04°07'53"E	C	+	1500 CE	Medieval	Ejarque et al. (2009)
Quarteira (QU)	37°06'00"	08°08'15"W	O	+	4500 cal BP	Chalcolithic	Schneider et al. (2010, 2016)
Rascafría (RA)	40°54'42"	03°51'47"W	S	+	1500 cal BP	Medieval	Franco-Mugica et al. (1998)
Reixach (RE)	42°00'46"	03°05'03"E	C	+	5600 ¹⁴ C BP	Neolithic	Blech et al. (1998), Burjachs (2012)
Riu Orris (RO)	42°29'20"	01°38'14"E	C	+	600 CE	Medieval	Ejarque et al. (2010)
Roquetas (RQ)*	36°47'40"	02°35'20"W	S	+	2400 cal BP	Iron Age	Pantaleón-Cano et al. (2003)
San Rafael (SR)*	36°46'25"	02°36'05"W	S	+	6360 cal BP	Neolithic	Pantaleón-Cano et al. (2003)
Sanabria (SA)	42°07'03"	06°43'00"W	O	+	< 2400 cal BP	Iron Age	Julià et al. (2007)
Sils (SI)	41°48'00"	02°44'00"W	D	5	ND	ND	Pérez-Obiol et al. (1991)
Sobrestany (SO)	42°05'27"	03°07'22"E	D	5	6300 cal BP	Neolithic	Parra et al. (2005), Burjachs (2012)
Somolinos 1 (SM1)	41°15'05"	03°03'54"W	O	+	1700 CE	Modern Age	Currás (2012)
Somolinos 2 (SM2)	41°14'48"	03°03'43"W	O	+	600 BCE	Iron Age	Currás (2012)
Son Bou (SB)*	39°55'29"	04°01'28"W	D	+	13,400 cal BP	Upper Paleolithic	Yll et al. (1997)
Teixoneres (TE)	41°48'25"	02°09'02"E	O	+	100 kyr BP	Middle Paleolithic	Ochando et al. (2020a)
Toll (TO)	41°48'25"	02°09'02"E	O	+	43 cal kyr BP	Upper Paleolithic	Ochando et al. (2020b)
Veranes (VE)	43°29'03"	05°45'13"W	O	+	1th-4th centuries	Roman	López-Sáez (2012)

* Unpublished data, retrieved from author's personal files

progress (Carrión et al., 2022) and has also been used to improve the CHIP database. The Iberian Paleoflora and Paleovegetation database gathers most pollen records available for the IP, encompassing ~330 sites in the first version and ~420 sites in the second version (Fig. 1). This database was used to locate the sites with published and unpublished *C/H* pollen records. The published records were extracted directly from the original publications, whereas the unpublished results were obtained from the personal records of the involved researchers (counting sheets, spreadsheets). Not all researchers could be contacted and, therefore, it cannot be ruled out that some information is missed. However, to the knowledge of the authors of this paper, all the relevant data have been included here and eventual omissions are considered to be minor and not affecting the general conclusions. In spite of this, the authors of this paper remain alert to possible additions for the improvement and updating of the CHIP database.

As usual, the *C/H* pollen has been labeled using a variety of unspecific names by different authors and have used the generic name *Cannabis* only in a few cases (*C. sativa* in a single case) with no mention of the criteria used, with a few exceptions (e.g., Rull and Vegas-Villarrúbia, 2014; Servera-Vives et al., 2018; Trapote et al., 2018). Due to the general unavailability of the original material (pollen slides, residues) to reexamine these identifications, we considered the assemblage approach of McPartland et al. (2018) and the pollen of each record tried to be assigned to wild *Cannabis* (pre-Neolithic open vegetation, especially steppes), wild *Humulus* (pre-Neolithic woodlands, especially deciduous forests) or cultivated *Cannabis* (Neolithic and post-Neolithic croplands and anthropized open vegetation), according to the original interpretations. This approach could not be applied in many cases, especially in sites with single and occasional occurrences, which hindered the use of quantitative criteria (i.e., the twofold increase with

respect to pre-anthropogenic values). In spite of this, the assemblage approach was useful in selected cases, which are discussed on an individual basis. It should be emphasized that this methodology cannot replace identifications based on morphology or other usual taxonomical methods and has a probabilistic element that should be taken into account in the interpretations.

4. Results

The final dataset used in this study is summarized in Table 1 and is provided in full as a spreadsheet in the Supplementary Material. Fig. 2 shows a clear NE-SW gradient with a higher density of sites in the NE sector (including the Balearic Islands) and an outstanding absence of *C/H* records in the southern area, with the exception of coastal environments. The occurrence of the interior SW “blind” *C/H* area cannot be attributed to the absence of palynological studies (Fig. 1) but likely to the actual lack of *C/H* records. Whether this is due to the absence of this pollen type or to its deliberate/unintentional oversight remains unknown, although the second possibility would be inconsistent with the usual palynological procedures in the IP (Carrión et al., 2012).

4.1. Abundance and continuity

Overall, continuous *C/H* records occurred in 10 cases, of which only two (Estanya and Montcortès) showed maximum values over 10%. These two sites hold the highest *C/H* pollen values with maxima between ~25% and ~60%, respectively. Discontinuous occurrences were more frequent (16), with four sites (Cueto Espina, Port Lligat, Sils and Sobrestany) attaining maxima of 5% or above. Occasional and single occurrences were the most frequent (29 sites), with only two sites with

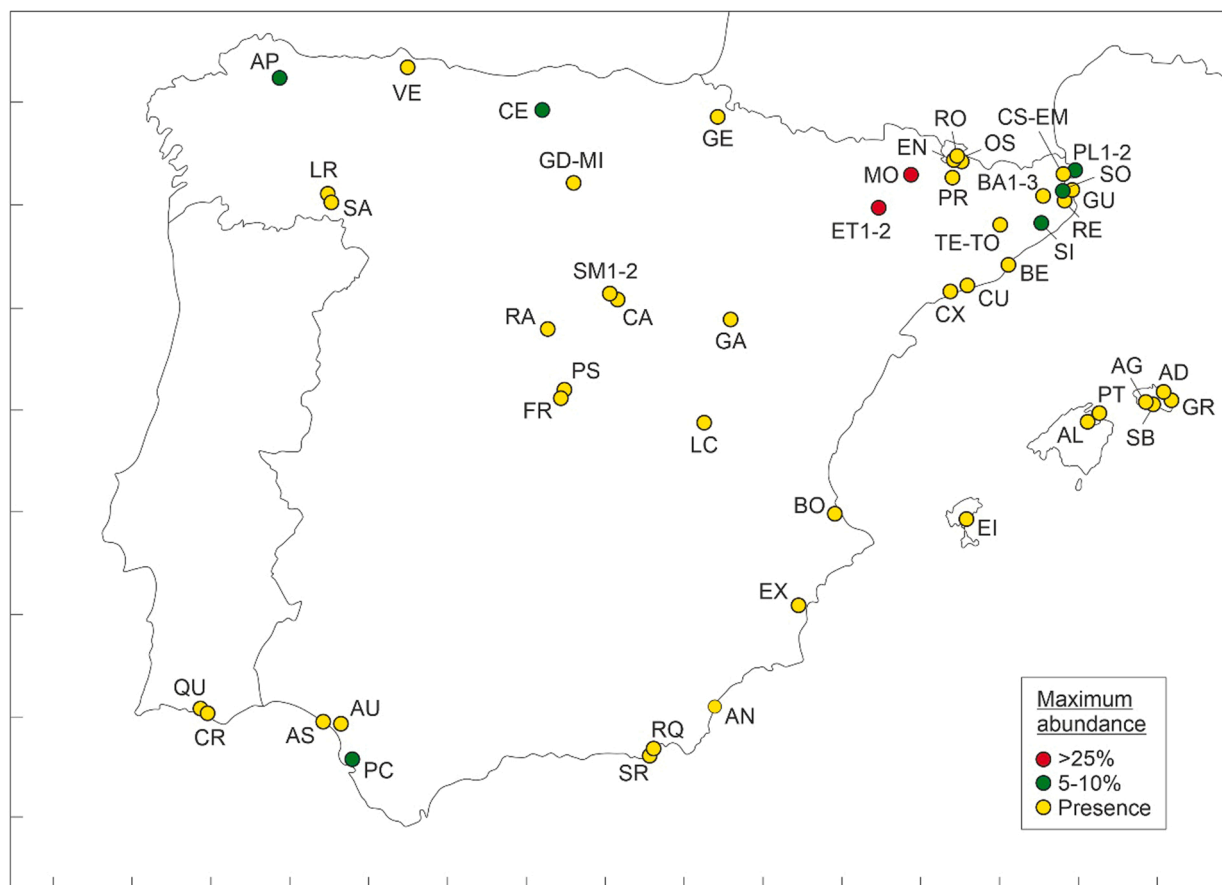


Fig. 2. Map of the Iberian Peninsula showing the sites used in this study, with indication of the maximum abundances of *C/H* pollen recorded. See the Supplementary Material for more details.

maximum abundances of 5% (As Pontes, Pocito Chico) and the remaining below the “presence” boundary (1%). Therefore, the most frequent case was that of single/occasional occurrences documenting only presence, which accounted for roughly half of the sites (27). Table 2 summarizes the localities with higher abundances of *C/H* pollen and their main features. Noteworthy, all of them lie in the northernmost part of the IP except one (Pocito Chico), which is in the south. From a chronological perspective, *C/H* pollen was present in most of these localities since the Neolithic, except Estanya and Montcortès, where this pollen appeared in the Middle Ages. Using the assemblage approach of McPartland et al. (2018), *C/H* pollen from sites with higher abundances was assigned to cultivated *Cannabis*, except two (Cueto Espina and Sils), where the available information was insufficient to apply this method.

4.2. Chronological sequence

Considering the first appearance (FA) of *C/H* pollen, regardless their abundances, the localities follow a stepped trend from the Middle Paleolithic to the Modern Age (Fig. 3), with maxima in the Neolithic and the Middle Ages, when FAs experienced sharp increases (Fig. 4). Before the Neolithic acceleration, *C/H* records are not uncommon (26% of the total), indicating relatively intense colonization of the IP prior to the agricultural revolution, with 17% of the FAs occurring during the Middle and Upper Paleolithic. The period following the Neolithic was characterized by a significant decline of FAs, which attained minimum values between the Bronze Age and the Roman period. The Medieval acceleration was more intense than the Neolithic rise and was followed by a new decline during the Modern Age, when the last FAs were recorded.

4.3. Spatiotemporal patterns

When the FAs are depicted geographically by cultural phases, some interesting spatiotemporal patterns emerge (Fig. 5). Paleolithic/Pleistocene records are mostly peripheral to the IP, with the older records situated in the Mediterranean coasts, especially in the NE sector, and the younger records in the western IP sector. The lack of *C/H* records in the central part of the peninsula is noteworthy. During the Mesolithic, all FAs were situated along the Mediterranean coasts with no arrivals in the rest of the IP. The Neolithic acceleration was characterized by the concentration of FAs in the northern part of the IP, with the older and most frequent appearances in the NE sector and progressively younger ages

Table 2

Sites with maximum *C/H* pollen abundances over 5% (see also Fig. 2) and occurrence patterns (OP: C, continuous; D, discontinuous; S, single occurrence). The prehistoric/historical phases of occurrence of *C/H* pollen and the age of the acme in each site is indicated. The taxonomic assignment according to the assemblage approach (AA) of McPartland et al. (2018) is also provided. ND, no data.

Site	Age range	OP	Max (%)	Max (age)	AA assignment
MO	Medieval-present	C	60	~1850 CE	Cultivated <i>Cannabis</i>
ET1	Medieval-present	C	25	~1750 CE	Cultivated <i>Cannabis</i>
AP	Neolithic	S	10	~4700 yr BP	<i>Cannabis/Humulus</i>
ET2	Medieval-present	C	5	~1400 CE	Cultivated <i>Cannabis</i>
CE	Neolithic-present	D	5	ND	ND
PC	Neolithic-Bronze-Iron	S	5	Bronze/Iron	Cultivated <i>Cannabis</i>
PL	Chalcolithic-Iron, Medieval-present	D	5	16th century	Cultivated <i>Cannabis</i>
SI	ND	D	5	ND	ND
SO	Neolithic, Bronze, Medieval	D	5	~1300 yr BP	Cultivated <i>Cannabis</i>

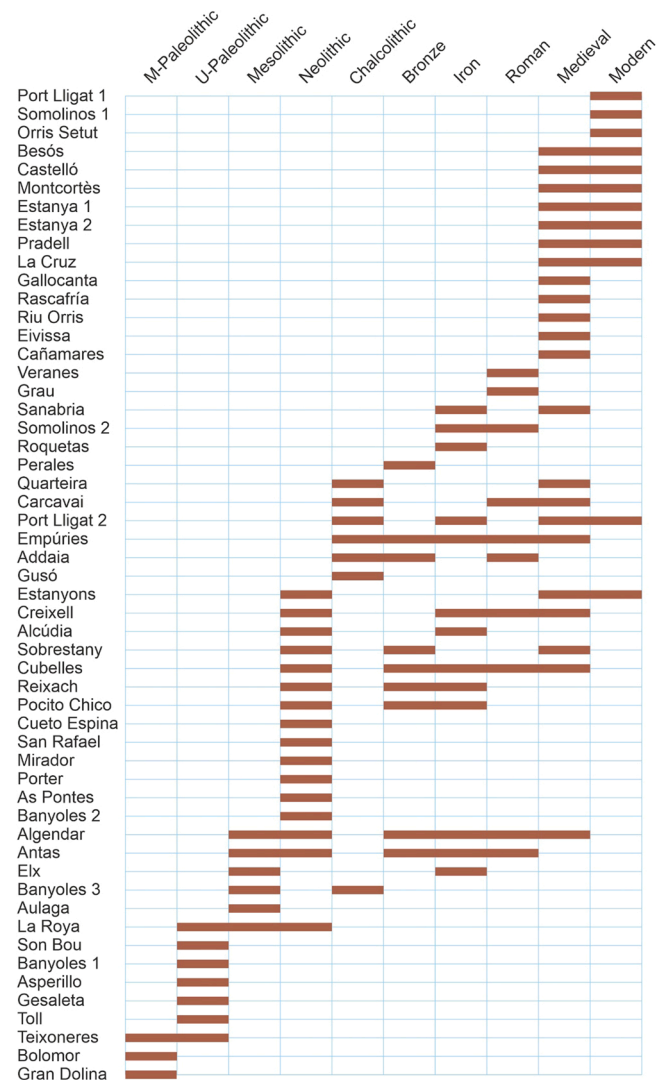


Fig. 3. Histogram of the first appearances (FAs) of *C/H* pollen sorted by pre-historic/historical phases. M, Middle; U, Upper.

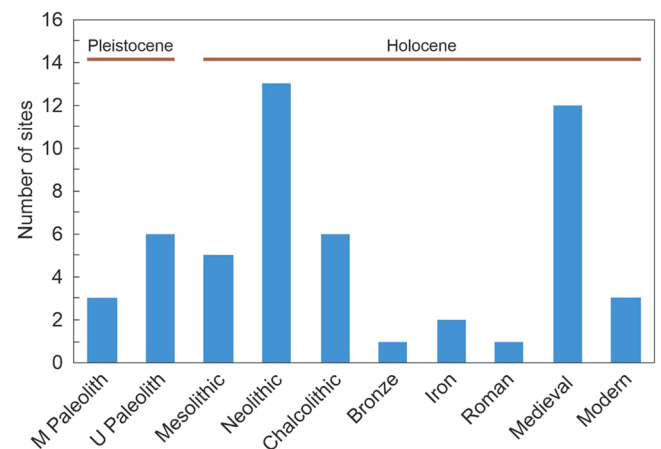


Fig. 4. Chronological ranges of *C/H* pollen by site. Fronteras (FR) and Sils (SI) are not represented due to lack of data.

toward the NW. Also noteworthy is a relatively old FA recorded in the SE area. The central IP remained uncolonized by *C/H* pollen, even during the Neolithic expansion quickening. The comparatively low Chalcolithic

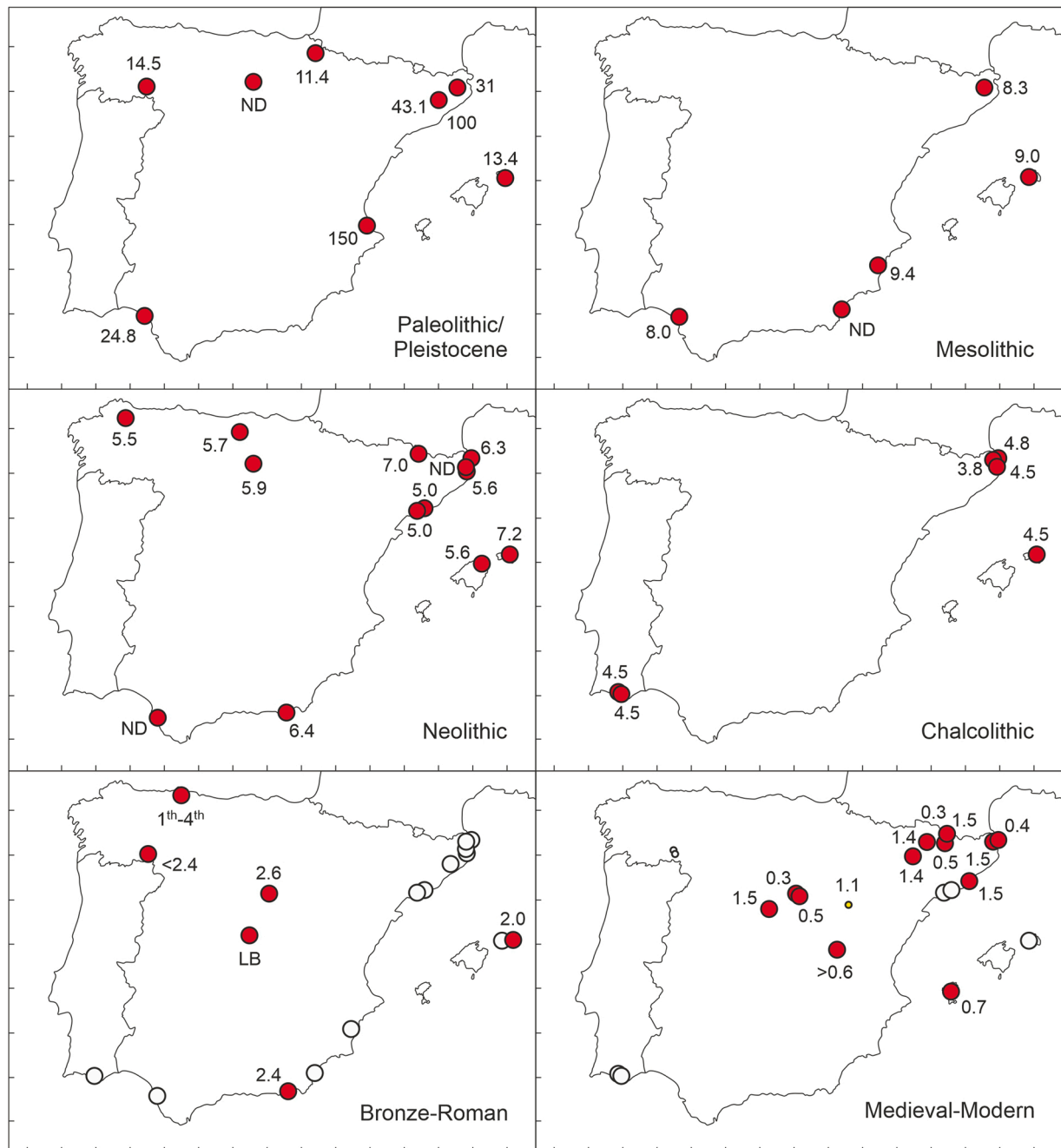


Fig. 5. Spatiotemporal patterns of the first appearances (FAs) of *C/H* pollen subdivided into the main cultural phases. Numbers are ages in kyr BP. Sites with *C/H* pollen continuity after the FA are marked by open dots. LB, Late Bronze ; ND, no precise dating.

arrivals were concentrated in the NE and SW sector, with nothing in between. During the phase of minimum arrivals (Bronze Age to Roman period; Fig. 4), a more widespread pattern of FA was recorded, with the first appearances of *C/H* pollen in the central IP. Finally, during the Medieval burst, most FAs were situated in a gradient from the northeastern to the central IP, indicating a second major colonization process following this direction.

5. Discussion and conclusions

Spatiotemporal patterns of FAs documented in this analysis suggest the occurrence of three major colonization waves of the IP by *C/H* pollen: (1) a pre-anthropogenic Middle/Upper Paleolithic phase between ~150 kyr BP and ~12 kyr BP with a possible east-west

component; (2) a Neolithic colonization acceleration (~7–5 kyr BP) with a clear NE-NW trend; and (3) a second Medieval burst (1.5 kyr BP onward) proceeding mainly from the NE to the center of the IP. In between, phases of lower colonization intensity but relevant geographical meaning occurred during the Mesolithic, the Chalcolithic, and the Bronze/Iron/Roman phases. All these events and processes will be discussed in more detail in relation to the cultural and environmental history of the IP, but first it is pertinent to assess the palynological evidence required to attest the actual presence of the parent plants of *C/H* pollen and to document the different activities of hemp industry developed in a given locality or region.

Middle Ages (~600 CE) in abundances that vary between 5% and 10%, which suggests local/regional cultivation (Riera et al., 2004; Rull et al., 2021a, 2021b). In Estanya, a gradual increase by the end of the Middle Ages (~1400 CE) culminated in a maximum of 25% during Modern times (~1750 CE), which is compatible with hemp retting, followed by a Contemporary drop to values typical of long-distance dispersal. In Montcortès, C/H pollen was under the retting threshold during the whole Medieval epoch, suggesting that local/regional cultivation and long-distance dispersal were the main sources of this pollen. An abrupt increase took place at the beginning of Modern Age (1500–1600 CE) that exceeded the retting threshold and remained in this condition until late 19th century, when a sharp decline occurred to long-distance dispersal values. During the last decades, a C/H pollen recovery was recorded compatible with regional cultivation, as no records of this activity exist around the lake.

5.2. Pleistocene colonization

The issue of pre-anthropogenic arrival of C/H wild forms to the IP deserve special attention because the FAs recorded in this work for the IP are considerably older than those provided before for the Late Pleistocene arrivals to western Europe. Dating reliability and correct taxonomic identification are essential to evaluate the first arrivals of *Cannabis* pollen to the IP. The oldest records (Middle Paleolithic) found correspond to the Gran Dolina (García-Antón, 1989), Bolomor (Ochando et al., 2019) and Teixoneres (Ochando et al., 2020a) sites, where C/H pollen was identified as “Cannabiaceae” or “Cannabinaceae”, which are unusual terms not recognized as formal taxonomic units but are here considered as indicative of C/H pollen type (Table 3). Using the assemblage approach, C/H pollen has been assigned to wild *Cannabis* in Gran Dolina, where Mediterranean scrubs dominated the landscape, but the available dating (Middle Pleistocene) is not precise enough to resolve the age of the involved sediments. The other two localities have more dating resolution but less taxonomic accuracy, as the dominance of mixed Mediterranean-mesophyllous forests prevents to unequivocally assign the C/H pollen to either wild *Cannabis* or *Humulus* using the assemblage approach.

Therefore, the oldest well-dated occurrences of C/H pollen recorded in the IP correspond to the Middle Paleolithic of Bolomor and Teixoneres sites, ranging from 150 to 100 kyr BP (Mid-Late Pleistocene). These dates are similar to those previously recorded for eastern Europe and much older than those reported for central and western Europe (McPartland et al., 2018). This suggests that a first and previously undetected colonization wave would have reached the IP during the Mid-Late Pleistocene. The geographical origin of this first colonization wave is unknown but the fact that both localities involved are located on Mediterranean coasts suggests an east-west dispersal direction across this sea (Fig. 7). This maritime pathway (MP) would require aerial and/or aquatic dispersal and would be favored by the existence of several islands and archipelagos favoring stepping-stone dispersal (Saura et al., 2014).

The other Pleistocene FAs recorded in this study correspond to the

Upper Paleolithic and range from ~43 kyr to ~13 kyr BP (Late Pleistocene). In this case, older FAs (~43–25 kyr BP) are situated in the NE and SW parts while the younger arrivals (~15–11 kyr BP) are in N and NW sectors, which could indicate the occurrence of two different colonization waves from outside before and after ~15–25 kyr BP or internal IP migration trends. The two older records are in the NE sector, which suggests the continued activity of the MP, the rise of a new continental pathway (CP), or both. This would support the idea of internal IP migrations after the colonization of NE coasts but the available evidence is insufficient for a sound appraisal. In a continental-wide perspective, the period between 18.5 kyr BP and 10.5 kyr BP was characterized in Europe by cold steppes in which wild *Cannabis* was the main C/H component, whereas *Humulus*-bearing deciduous forests began to spread from the southern glacial refugia (McPartland et al., 2018). In our study, a Late-Pleistocene record from the Mediterranean biogeographical region of the IP has been assigned to wild *Cannabis*, while two records from the Eurosiberian region have been considered to be consistent with wild *Humulus* (Table 3).

5.3. Holocene expansion/anthropogenic diffusion

Before discussing Holocene C/H pollen trends, it is necessary to introduce the chronological framework of ecological and landscape dynamics for SW Europe. Current European landscapes have been shaped during the last 10–12 millennia under the influence of climatic shifts and human impact, along with their corresponding feedbacks and synergies. The role of natural and anthropogenic drivers in the origin of Eurosiberian and Mediterranean biomes in SW Europe has largely been discussed but the increasing anthropization of the landscapes they conform is widely recognized, especially since the Neolithic (Bocquet-Appel et al., 2009, 2012; Collins et al., 2012; Leppard, 2014; Vannièrè et al., 2016; Roberts et al., 2018). Superimposed to this progressive anthropization, there is a climatic trend toward aridification that has also influenced the emergence and expansion of the Mediterranean biome across the whole circum-Mediterranean region, including the IP (Jalut et al., 2009; Carrión et al., 2010; Pérez-Obiol et al., 2011; Vannièrè et al., 2011; Ramos-Román et al., 2018). This section begins with a summary of the main Holocene anthropogenic and paleoclimatic trends, to provide the appropriate socio-environmental chronological context for the discussion of the most significant C/H pollen events – namely the Neolithic wave, the Bronze-Roman impasse and the Medieval acceleration.

5.3.1. Anthropization chronology

The latest published chronological framework of human impact for SW Europe (Iglesias et al., 2021) subdivides the Holocene into four main stages, according to fire incidence, deforestation and land-use trends (Fig. 8):

- Stage I corresponds to pre-Neolithic times (>6.5 kyr BP) and was characterized by hunter-gatherer societies living in densely forested landscapes under climates with long, warm/dry summers and high

Table 3

Paleolithic/Pleistocene records of C/H pollen in the IP, indicating the main features related with dating, taxonomical identification and vegetation types, according to the original references. AA (assemblage approach) assignments according to McPartland et al. (2018).

Site	First appearance	Dating	C/H pollen	Vegetation	AA assignment
GE	11.4–10.9 kyr BP	Radiocarbon	<i>Cannabis/Humulus</i>	Mixed Atlantic forest	Wild <i>Humulus</i>
SB	13.4 kyr BP	ND	Cannabaceae	ND	ND
LR	14.5–10.5 kyr BP	Radiocarbon	<i>Humulus/Cannabis</i>	Mixed Atlantic forest	Wild <i>Humulus</i>
AS	24.8–23.2 kyr BP	Radiocarbon	Cannabinaceae	Mixed Mediterranean forest	C/H
BA1	31 ky BP	U-series	<i>Cannabis</i>	Cold (glacial) steppe	Wild <i>Cannabis</i>
TO	43.1 kyr BP (MIS 3)	Radiocarbon	Cannabaceae	Mixed Mediterranean forest	C/H
TE	100 kyr BP (MIS 5c)	U-series	Cannabaceae	Mixed Mediterranean forest	C/H
BO	150 kyr BP (MIS 5e)	Faunal	Cannabaceae	Mixed Mediterranean forest	C/H
GD	Mid-Pleistocene	Faunal	Cannabiaceae	Mediterranean scrub	Wild <i>Cannabis</i>

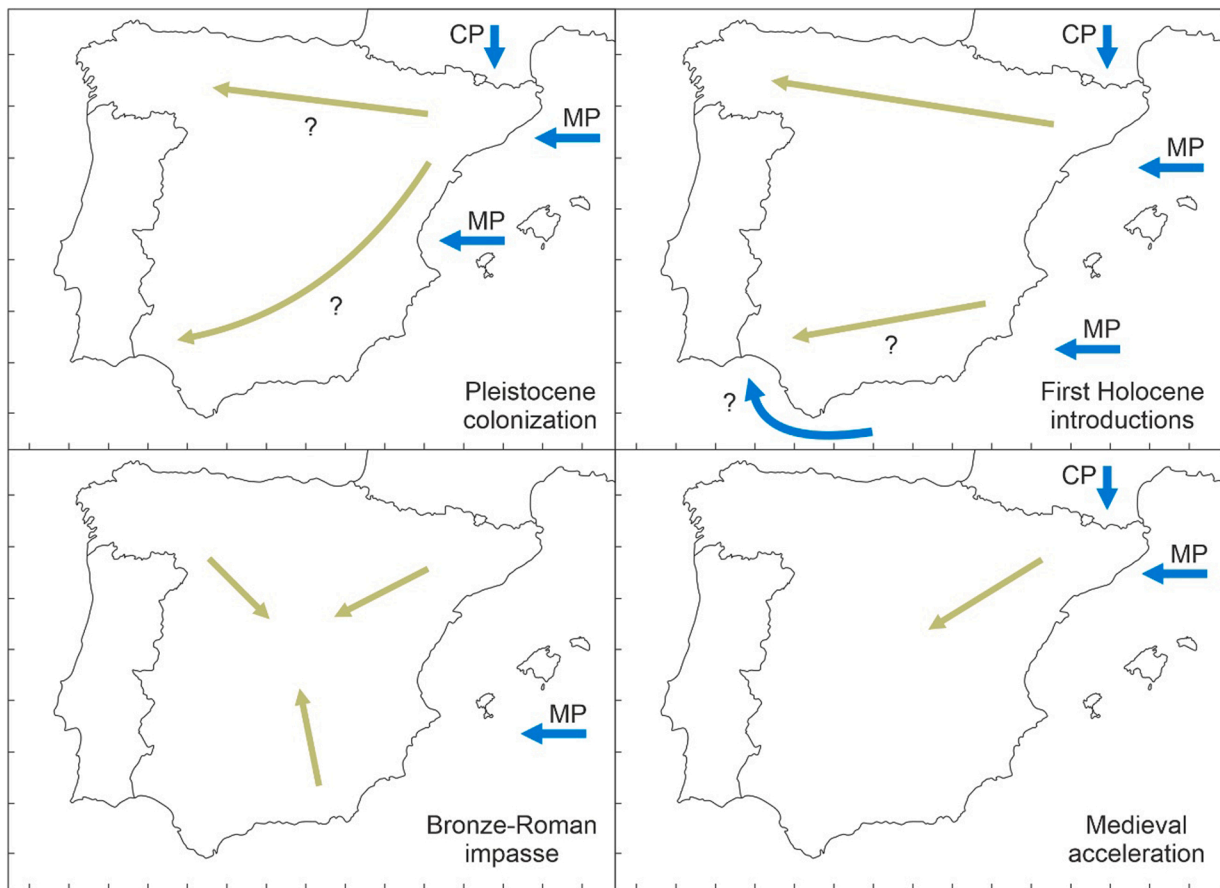


Fig. 7. Possible dispersal pathways for C/H pollen into (blue arrows) and within (green arrows) the Iberian Peninsula. CP, continental pathway; MP, maritime pathway.

interannual precipitation variability, which would have favored the occurrence of frequent fires.

- Stage II roughly coincides with the Neolithic (6.5–4.2 kyr BP) and was characterized by extensive deforestation and land use under cooler and wetter climates. During this stage, human impact increased and the SW European landscapes became more cultural and characterized by more open communities with frequent forest/cropland mosaics. Human societies were increasingly sedentary and fast-growing, and practiced a diversified economy.
- Stage III corresponds to the first half of the Late Holocene (4.2–2.4 kyr BP) and was characterized by high spatial climatic variability and the expansion of anthroposystems leading to substantial deforestation and the dominance of open landscapes, notably for cultivation and grazing. This was the time of decoupling of ecosystem dynamics from climate and human disturbance became the major ecological forcing. Human footprint on the landscape was especially important between 3.2 and 2.4 kyr BP (Bronze-Iron ages), which was the onset of more intense and efficient agriculture practices.
- Stage IV encompasses roughly the last two millennia (2.4 kyr BP to present) and was characterized by maximum rates of human impact, as expressed in intensive land use and the development of urban extractive industries. Burning and deforestation increased and peaked during the Roman Period (~2 kyr BP), possibly due to the need of expanding arable lands, and declined afterwards, when technological innovations facilitated more intensive exploitation practices. Large changes in transport and communication facilitated exchange and commerce after the collapse of the Roman Empire.

These stages should be viewed as a regional expression with sub-regional differences, especially in the chronological boundaries and the

intensity of human impact (Fig. 8). For example, Stage II began roughly a millennium later (~5.1 kyr BP) in temperate western Europe (TWE), where Neolithization occurred later than in the Mediterranean region. Regarding human impact, as expressed in land-use intensity, the TWE trend is more similar to the monotonically increasing regional trend, whereas northern and southern Mediterranean regions show significant differences. In the north, the ascending trend was spiked by two maxima at ~5.5 kyr BP (Neolithic) and ~2.5 kyr BP (Iron Age), whereas in the south, the trend was increasing until a maximum at ~3.5 kyr BP (Bronze Age) and then decreased until Modern times (Iglesias et al., 2021).

5.3.2. Paleoclimatic framework

Paleoclimatic trends for the western Mediterranean region have been characterized using a marine sedimentary record retrieved in the Balearic archipelago, the Minorca MD99–2343 record, which contains the whole Holocene sequence (Frigola et al., 2007). This record distinguished four main climatic phases, three of them occurring during the last ~10 ky BP (Fig. 8):

- Phase II (10.5–7 kyr BP), roughly coinciding with anthropogenic Stage I, characterized by increasing Si/Al and Ti/Al ratios, which are proxies for terrigenous input from fluvial sources and, therefore, for increasingly wetter continental climates.
- Phase III (7–4 kyr BP), roughly coinciding with anthropogenic Stage II, characterized by high and less variable terrigenous input, indicating wetter and fairly stable continental climates.
- Phase IV (4–0 kyr BP), encompassing anthropogenic stages III and IV, characterized by a maintained decrease of terrigenous input, consistent with a Late Holocene aridification trend.

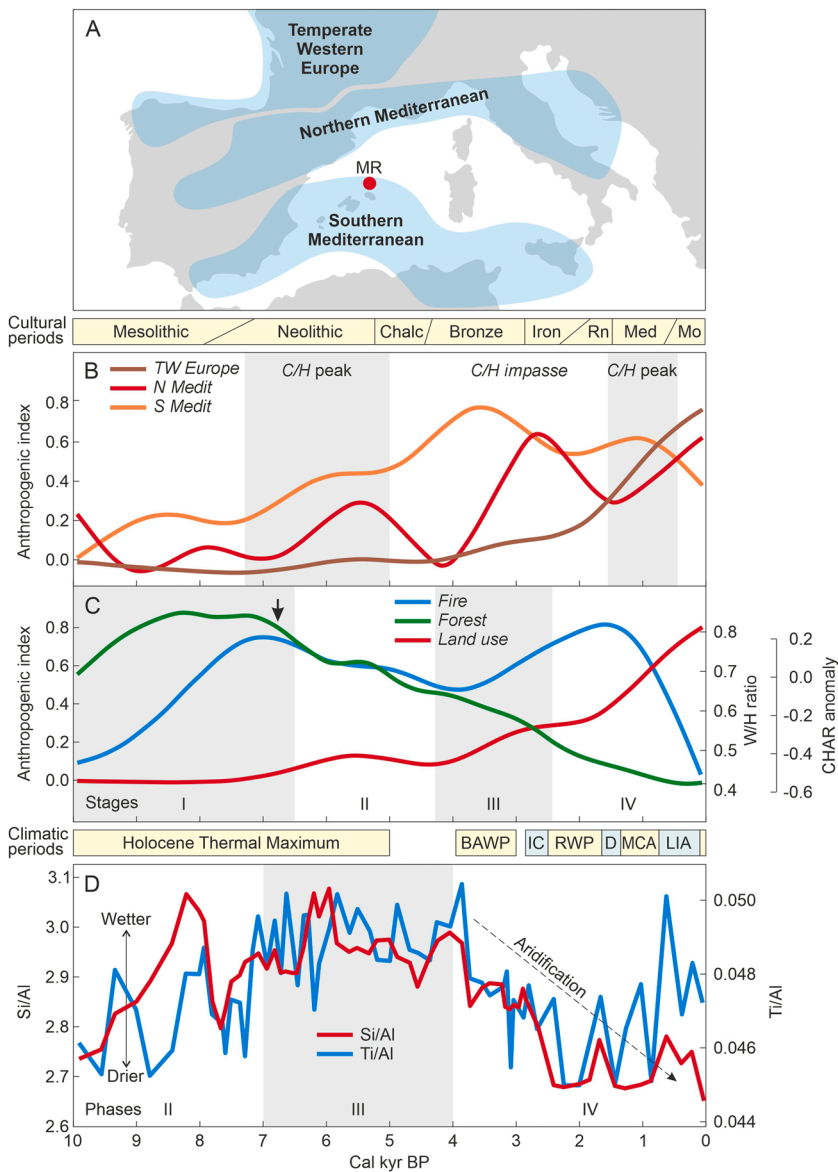


Fig. 8. Holocene anthropogenic and paleoclimatic chronological frameworks for SW Europe. A) Sketch-map indicating the cultural subregions defined by Iglesias et al. (2021) and the location of the Minorca paleoclimatic record (red dot) (Frigola et al., 2007). B) Subregional differences in human impact as expressed by land-use values, using an anthropogenic index based on pollen percentages of cultivated plants (*Avena*, *Hordeum*, *Secale*, *Triticum*, *Zea*, other cereals, *Castanea*, *Juglans* and *Olea*) (Iglesias et al., 2021). The gray bands highlight the times of maximum C/H first appearances (see Figs. 1 and 5). C) Fire, forest cover and land use intensity for the whole SW European region. Fire incidence is expressed as anomalies in charcoal (CHAR) accumulation rates. Forest cover is expressed as the ratio between woody (W) and herbaceous (H) taxa, with high values representing closed forests and low values open vegetation. Land-use intensity is expressed by the previously defined anthropogenic index (B panel). The black arrow is the onset of pronounced forest lost (deforestation). I to IV are the stages of development of socio-environmental systems (Iglesias et al., 2021). D) Moisture trends reconstructed from the Minorca record (red dot) using the Ti/Al and Si/Al ratios from core MD99-2343. II to IV are the climatic phases defined on the basis of these ratios (Frigola et al., 2007). Cultural periods (Iglesias et al., 2021): Chalc, Chalcolithic; Rn, Roman Epoch; Med, Medieval Period; Mo, Modern Age. Climatic periods (Renssen et al., 2012; Martín-Chivelet et al., 2011): BAWP, Bronze Age Warm Period; IC, Ice Age Cold Period; RWP, Roman Warm Period; D, Dark Ages Cold Period; MCA, Medieval Climate Anomaly; LIA, Little Ice Age.

Paleotemperature trends in the IP have followed the usual Northern Hemisphere sequence beginning with the Early Holocene Warming (up to ~11 kyr BP) followed by the Holocene Thermal Maximum (HTM; 11–5 kyr BP) (Renssen et al., 2012) and the higher frequency Late Holocene variability characterized by the Bronze Age Warm Period (4–3 kyr BP), the Iron Age Cold Period (2.9–2.5 kyr BP), the Roman Warm Period (2.5–1.7 kyr BP), the Dark Ages Cold Period (1.7–1.4 kyr BP), the Medieval Climate Anomaly (1.4–0.8 kyr BP), the Little Ice Age (0.8–0.1 kyr BP) and the Modern Warming (Martín-Chivelet et al., 2011).

5.3.3. The Neolithic wave

The first acceleration of C/H arrivals to the IP occurred during the Neolithic but there is a consistent spatiotemporal pattern extending from the Mesolithic to the Chalcolithic. The Mesolithic patterns of appearance support the predominance of the MP with no internal migrations within the IP. The occurrence of a non-Mediterranean SW locality would be compatible with the extension of the MP to the Atlantic after crossing the Strait of Gibraltar or the dispersal through the southern coasts (Fig. 7). The MP continued to be active during the Neolithic, especially in the NE sector, from where a pathway of internal colonization progressed toward the SW of the IP. Once more, the

possibility of the combined action of a MP and a CP is strongly suggested and is reinforced by the arrangement of the FAs during the Chalcolithic. These consistent patterns suggest that the first Holocene introductions of C/H into the IP would have been a continuous process initiated in the Mesolithic, approximately 2000 years after the end of Pleistocene colonization, and continued until the Chalcolithic, with an intermediate Neolithic acceleration.

Whether these introductions were natural or anthropogenic remains unclear. The assignment of several IP records to cultivated *Cannabis* (Table 2) seem to favor Neolithic cultivation but this would be contradictory with the general continental patterns showing no *Cannabis* cultivation during the Neolithic. Indeed, across Europe, the time interval between 10 kyr BP and 5 kyr BP was characterized by the appearance of the first crops and the expansion of deciduous mesophytic forests, which began to recolonize the continent since 7 kyr BP onward. In these conditions, most C/H pollen records were consistent with *Humulus*, whereas *Cannabis*-prone records were limited to the southern Mediterranean coasts. Interestingly, no pollen records consistent with cultivated *Cannabis* were found in the IP, which coincided with the lack of archeological evidence on *Cannabis* cultivation and use during the European Neolithic (McPartland and Hegman, 2018). The first

palaeoecological and archeological signs of European hemp cultivation have been found in the western coasts of the Black Sea (present-day Bulgaria) during the Copper (Chalcolithic) and Bronze ages. The involved domestication process has been considered autochthonous and independent from the early Neolithic domestication of *Cannabis* in the present China, suggesting that hemp domestication could have occurred independently in more than a single region (McPartland et al., 2018).

The beginning of the Neolithic *C/H* peak coincided with the onset of the general deforestation in SW Europe and occurred mainly during anthropogenic Stage II, when land use began to intensify (Fig. 8). During this stage, human impact underwent a significant increase, especially in the Mediterranean region, which is consistent with a higher CP (northern Mediterranean subregion) and MP (southern Mediterranean subregion) activity. Climatically, the Neolithic *C/H* wave coincided with a cooling trend at the end of the HTM and the stabilization of wetter climates in the western Mediterranean region, coinciding with the end of the postglacial sea-level rise to present-like settings (Frigola et al., 2007). This would have favored navigation and, hence, the maritime MP for *C/H* arrivals to the IP would have been especially favored. The EP should also be considered as a potentially important incoming pathway, as Indo-European peoples were important colonizers of the IP during this prehistorical phase and used preferably the Pyrenean pathway, situated to the north.

5.3.4. The Bronze-Roman impasse

C/H introductions to the IP significantly declined between the Bronze Age and the Roman period, when a centripetal diffusion toward the central part of the IP began (Fig. 7). The few arrivals recorded from outside occurred in the SE and the Balearic Islands, likely following the MP. This can be regarded as a phase with little activity in relation to *C/H* expansion, when the cessation of the EP and the initial colonization of the most interior lands of the peninsula would be the most relevant features. Curiously, the Bronze-Roman impasse observed in the IP occurred shortly after the purported European domestication of hemp and during the expansion of this crop across the continent, which began by 4.5 kyr BP (Fig. 1) and intensified since 2 kyr BP, with the expansion of the Roman Empire (McPartland et al., 2018).

The Bronze-Roman impasse roughly coincided with anthropogenic Stage II, when deforestation of SW Europe was in progress and biomass burning experienced a relevant increase coinciding with a second regional pulse of human impact (Fig. 8). This enhanced anthropogenic pressure was especially significant in the Mediterranean region, peaking at the Bronze Age (southern subregion) and the Bronze-Iron transition (northern subregion). Contrastingly, maximum rates of regional land use coincided with a slowdown in *C/H* arrivals to the IP, where centripetal diffusion was the predominant process. This was an epoch of frequent arrivals to the IP, including peoples such as the Phoenicians, Greeks, Carthaginians or Romans, with well-developed navigation skills. Therefore, the low rates of *C/H* input cannot be attributed to the lack of new colonizers. It is possible that these incoming peoples were less attached to the hemp industry than former Neolithic colonizers or that they used the already existing local hemp resources with no need for new introductions. Archeological evidence is needed to test this possibility and others that may emerge (Guerra and López-Sáez, 2006).

5.3.5. The Medieval acceleration

A completely different pattern emerged in the Middle Ages with the onset of the second diffusion wave. During this phase, older arrivals were concentrated in the NE sector, suggesting the reactivation of the northern CP, combined or not with the MP, that time restricted to the NE area (Fig. 7). From there, *C/H* diffusion advanced toward the central IP, which was colonized by *C/H* mostly during the Medieval and Modern periods. This phase falls within the European expansion of cultivated *Cannabis* recorded between 2 and 0.8 kyr BP (McPartland et al., 2018).

The significant increase of *C/H* pollen recorded in some localities (Estanya, Montcortès) during Modern Ages has been associated to hemp

retting (Section 5.1) and coincided with a phase of maximum development of the Spanish royal navy after the Columbian discovery of America (1492 CE) (Riera et al., 2006; Rull and Vegas-Villarrúbia, 2014; Trapote et al., 2018). During that phase, hemp cultivation was mandatory in the whole country to provide fiber, mainly for sails and ropes, to support the naval expansion of the Spanish Empire (Sanz, 1995). The maximum of hemp industry recorded during the mid-18th century coincided with a phase of maximum ship building, especially in the NE part of the IP, and general economic prosperity and intensification of commerce with America (Andreu, 1981; Delgado, 1994). Hemp industry was severely curtailed in the mid-19th century after the dismantling of the royal navy and the replacement of hemp fiber by other products, notably flax, since 1860 CE (Casassas, 1985).

The Medieval acceleration coincided with a third pulse in regional human impact and the continued general deforestation, along with a significant decline of biomass burning that has been attributed to the development of new methods of resource management more efficient than fire (Fig. 8). Human pressure was growing faster in temperate western Europe and the northern Mediterranean region, which is consistent with the *C/H* arrival and expansion from the peninsular NE (Fig. 7). The pattern is also consistent with the progressive colonization of the IP from the north by Christian cultures (with important contributions from beyond the Pyrenees) during Medieval times, after the southern Muslim invasion (Brunes Ibarra, 2006; Blasco and Badia-Miró, 2007; Alonso et al., 2022).

5.4. Possible influence of climatic changes

Finding direct evidence for a causal link between climatic shifts and *C/H* expansion across the IP is difficult but eventual chronological coincidences may suggest some potential relationships. The oldest (Middle Paleolithic) well dated *C/H* records of the IP – i.e., Bolomor (150 kyr BP), Teixoneres (100 kyr BP) and Toll (~43 kyr BP) – appeared during interstadials MIS 5e, MIS 5c and MIS 3, respectively (Ochando et al., 2019, 2020a, 2020b), which may suggest some link with warmer climates. The Asperillo record (~25–23 kyr BP) occurred in a short warming between the cooling reversals known as Heinrich Event 2 (HE2) and the Last Glacial Maximum (LGM) (Fernández et al., 2021), which may support a potential relationship with temperature. Upper Paleolithic records (La Roya, Son Bou and Gesaleta) occurred during the Lateglacial transition (~15–12 kyr BP), with no clear links with any specific climatic conditions.

Regarding Holocene times, the Neolithic colonization wave (7.2–5 kyr BP) coincided with the global HTM (Renssen et al., 2012), whereas the Bronze-Roman impasse (~4–2 kyr BP) occurred under variable climatic conditions in the IP (Martín-Chivelet et al., 2011). The Medieval diffusion wave (1.5–0.5 kyr BP) took place mostly during the North Atlantic warming known as the Medieval Warm Period (MWP) or the Medieval Climate Anomaly (MCA) (Mann et al., 2009). As it occurred in the Pleistocene records, the coincidence between *C/H* appearances/bursts and warmer climates seems to be fairly consistent. It is also noteworthy that this relationship does not maintain in cases where the *C/H* pollen has been assigned to *Humulus*, rather than *Cannabis*, by the assemblage approach, as it occurs in the Lateglacial (Table 3). Therefore, the potential link between *C/H* pollen and warmer climates seems to be stronger for *Cannabis*, which is consistent with the general climatic requirements of this plant (Clarke and Merlin, 2013). In contrast with Pleistocene times, the influence of climate during the Holocene could have been indirect by affecting human migration and settlement patterns, with the ensuing consequences on *C/H* diffusion.

Relationships with moisture changes are more difficult to establish, as shifts in hydrological balance, i.e. precipitation/evapotranspiration rates, are usually of more local nature than temperature variations. In this case, the establishment of local pollen-climate relationships is recommended, followed by the seek of more general regularities across spatial scales. However, the Late-Holocene aridification trend was a

regional phenomenon whose potential influence on *C/H* pollen trends may be interesting to evaluate, as it has been considered a major environmental driver for the origin and expansion of Mediterranean biomes. Noteworthy, two contrasting *C/H* events – i.e., the Bronze impasse and the Medieval acceleration – took place during this trend toward drier climates. In addition, the Neolithic *C/H* acceleration occurred during a phase of wet climates, which differs from the aridity trend under which the same phenomenon developed during the Middle Ages. Therefore, a potential causal relationship between aridity and *C/H* dispersal is not supported by these preliminary results. In the absence of more detailed studies, it seems that temperature would be more influential than moisture on *C/H* biogeography in the IP, but more climatically-focused research is needed for a sound assessment.

6. Future research

As this is the first time that a synthetic reconstruction of spatio-temporal patterns of *C/H* pollen across the IP is attempted, the results obtained should not be considered conclusive assessments but, rather, a source for hypothesis and ideas to be tested with future studies. As usual in any meta-analysis, the validity of the outputs will expire when a new similar synthetic study will be produced using an updated database.

As pointed out in the introduction, the database used here has been extracted from the exhaustive compilation of palynological records available for the IP (Carrión et al., 2012, 2022), enriched with personal contributions from the authors of a number of records that remain to be published or whose *C/H* pollen records are not available in the original publications. Further efforts should be aimed at increasing and improving the *C/H* records of this database, to pave the way towards a new and more exhaustive meta-analysis. This is a long-term venture worth to be continued because of the many implications that *Cannabis* – as a most ancient human domesticate, with a number and a diversity of uses difficult to match (Balant et al., 2021) – may have for the study of cultural evolution, in relation to the domestication and use of natural resources.

The IP is especially well suited for a study of this type due to its strategic geographical emplacement, which is responsible not only for its outstanding environmental and biogeographical patterns but also for its rich cultural history, in terms of both incoming and outgoing influence. Indeed, the IP has been the meeting place of a high diversity of cultures since prehistoric times but has also influenced global cultural developments of the modern world after the Columbian discovery of America and the further worldwide imperial expansion. As shown in this paper, most of these processes can be linked, in one or another way, to the historical biogeography of the Iberian *Cannabis*.

As emphasized in the introduction, this study should be complemented with a similar peninsular-wide meta-analysis of archaeological and historical evidence, to establish the corresponding links of *Cannabis* arrival, dispersal and diffusion, as recorded by pollen evidence, with human migrations and cultural changes across spatial and temporal scales.

Declaration of Competing Interest

The authors declare that they have no known competing financial interests or personal relationships that could have appeared to influence the work reported in this paper.

Data availability

Raw data provided as Supplementary Material.

Acknowledgements

No funding was received specifically for the development of this research. The comments and suggestions from two anonymous

reviewers contributed to the improvement of the manuscript.

References

- Aedo, C., Buirra, A., Medina, L., Fernández-Albert, M., 2017. The Iberian vascular flora: richness, endemism and distribution patterns. In: Loidi, J. (Ed.), *The Vegetation of the Iberian Peninsula*. Springer, Cham, pp. 101–130.
- Allen, J.R.M., Huntley, B., Watts, W.A., 1996. The vegetation and climate of northwest Iberia over the last 14 000 yr. *J. Quat. Sci.* 11, 125–147.
- Alonso, J.I., Sánchez, M.C., Torija, E., 2022. El Comité Oficial del Cáñamo y la Comisión del Cáñamo, dos organismos dedicados al fomento del cáñamo en España entre 1928 y 1936. *Vegueta* 22, 535–556.
- Andreu, M., 1981. La financiación de la industria naval en Barcelona (1745-1760). *Pedralbes* 1, 267–294.
- Balant, M., Gras, A., Gálvez, F., Garnatje, T., Vallés, J., Vitales, D., 2021. CANNUSE, a database of traditional *Cannabis* uses – an opportunity for new research. *Database* 24.
- Bermúdez de Castro, J.M., Arsuaga, J.L., Carbonell, E., Rosas, A., Martínez, I., Mosquera, M., 1997. A hominid from the lower Pleistocene of Atapuerca, Spain: possible ancestor to Neanderthals and modern humans. In: *Science*, 276, pp. 1392–1395.
- Birks, H.J.B., 2016. Some reflections on the refugium concept and its terminology in historical biogeography, contemporary ecology and global-change biology. *Biodiversity* 16, 196–212.
- Blasco, Y., Badia-Miró, M., 2007. La industria del cáñamo en Barcelona: de la sociedad en comandita a la sociedad anónima. X Congrés d'Història de Barcelona, Institut de Cultura, Barcelona, pp. 1–20.
- Blech, M., Marzoli, D., Burjachs, F., Buxó, R., Casas, A., Giralt, S., Rambaud, F., 1998. Interdisziplinäre Propektionen im Ampurdán. Sonderdruck aus *Madrider Mitteilungen*, Deutsches Archäologisches Institut, Mainz, pp. 99–119.
- Bocquet-Appel, J.P., Naji, S., Vander Linden, M., Kozłowski, J.K., 2009. Detection of diffusion and contact zones of early farming in Europe from the space-time distribution of ^{14}C dates. *J. Archaeol. Sci.* 36, 807–820.
- Bocquet-Appel, J.P., Naji, S., Vander Linden, M., Kozłowski, J., 2012. Understanding the rates of expansion of the farming system in Europe. *J. Archaeol. Sci.* 531–546.
- Brunes, Ibarra, M.A., 2006. La defensa de la cristiandad; las armadas en el Mediterráneo en la edad moderna. *Cuad. Hist. Mod.* 5, 77–99.
- Burjachs, F., 1996. La secuencia palinológica de La Cruz (Cuenca, España). In: Ruiz-Zapata, B. (Ed.), *Estudios Palinológicos*, Universidad de Alcalá, Alcalá de Henares, pp. 31–36.
- Burjachs, F., 2012. Paleoeología botánica de las llanuras litorales del NE de la Península Ibérica: de la Edad del Bronce Final hasta finales de la Edad Medi. Reinterpretando los datos. In: Ropiot, V., Puig, C., Mazière, F. (Eds.), *Les Plaines Littorales en Méditerranée Nord-Occidentale. Regards Croisés d'Histoire, d'Archéologie et de Géographie de la Protohistoire au Moyen Âge*. Monique Mergoïl, Montagnac, pp. 283–296.
- Burjachs, F., Schulte, L., 2003. El paisaje vegetal del Penedès entre la prehistoria I el món antic. In: Guitart, J., Palet, J.M., Prevosti, M. (Eds.), *Territoris Antics a la Mediterrània I a la Cossitània oriental*. Direcció General de Patrimoni Cultural, Departament de Cultura, Generalitat de Catalunya, pp. 249–254.
- Burjachs, F., Pérez-Obiol, R., Roure, J.M., Julià, R., 1994. Dinámica de la vegetación durante el Holoceno en la isla de Mallorca. In: Mateu, I., Dupré, M., Güemes, J., Burgaz, M.E. (Eds.), *Trabajos de palinología Básica y Aplicada*. Universitat de València, Valencia, pp. 199–210.
- Burjachs, F., Rodó, X., Comín, F.A., 1996. Gallocanta: ejemplo de secuencia palinológica en una laguna efímera. In: Ruiz-Zapata, B. (Ed.), *Estudios Palinológicos*, Universidad de Alcalá, Alcalá de Henares, pp. 25–29.
- Burjachs, F., Bach, J., Buxó, R., Llàcer, P., McGlade, J., Picazo, M., Piqué, R., Ros, M.T., 2005. El territori d'Emporion en les seves dades paleoambientals. *Empúries* 54, 25–32.
- Burjachs, F., Pérez-Obiol, R., Picornell-Gelabert, L., Revelles, J., Servera-Vives, G., Expósito, I., Yll, E.I., 2017. Overview of environmental changes and human colonization in the Balearic Islands (Western Mediterranean) and their impacts on vegetation composition during the Holocene. *J. Archaeol. Sci. Rep.* 12, 845–859.
- Cabezudo, B., Recio, M., Sánchez-Laulhé, J.M., Trigo, M.M., Toro, F.J., Polvorinos, F., 1997. Atmospheric transportation of marihuana pollen from north Africa to the Southwest of Europe. *Atmos. Environ.* 31, 3323–3328.
- Carrión, J.S., (coord.) 2012. Paleoflora y Paleovegetación de la Península Ibérica e Islas Baleares: Plioceno-Cuaternario. Fundación Séneca, Murcia.
- Carrión, J.S., (coord.) 2022. Paleoflora y Paleovegetación Ibérica. Fundación Séneca, Murcia.
- Carrión, J.S., Yll, E., Walker, M., Legaz, A., Chaíns, López, A., 2003. Glacial refugia of temperate, Mediterranean and Ibero-North African flora in south-eastern Spain: a new evidence from cave pollen at two Neanderthal Man sites. *Glob. Ecol. Biogeogr.* 12, 119–129.
- Carrión, J.S., Fernández, S., Jiménez-Moreno, G., Fauquette, S., Gil-Romera, G., González-Sampériz, P., Finlayson, C., 2010. The historical origins of aridity and vegetation degradation in southeastern Spain. *J. Arid Environ.* 74, 731–736.
- Carrión, J.S., Rose, J., Stringer, C., 2011. Early human evolution in the western Palearctic: ecological scenarios. *Quat. Sci. Rev.* 30, 1281–1295.
- Paleofloras, paleovegetation and human evolution. In: Carrión, J.S., Scott, L., de Menocal, P. (Eds.), 2019. *Rev. Palaeobot. Palynol.*, 267, pp. 32–38.
- Casassas, L., 1985. Fibres tradicionals i emplaçaments industrials a la regió de Barcelona. *Treb. Soc. Catalan. Geogr.* 4, 117–128.

- Clarke, R.C., Merlin, M.D., 2013. *Cannabis*: Evolution and Ethnobotany. University of California Press, Los Angeles.
- Clarke, R.C., Merlin, M.D., 2016. *Cannabis* domestication, breeding history, present-day genetic diversity, and future prospects. *CRC Crit. Rev. Plant Sci.* 35, 293–327.
- Collins, P.M., Davis, B.A.S., Kaplan, J.O., 2012. The mid-Holocene vegetation of the Mediterranean region and southern Europe, and comparison with the present day. *J. Biogeogr.* 39, 1848–1861.
- Currás, A., 2012. Estudio Sobre la Evolución de Paisajes Mediterráneos Continentales en Lleida y Guadalajara Durante los Últimos 3000 Años a Partir de las Secuencias Polínicas de Ivars, Somolinos y Cañamares. PhD dissertation, Universitat de Barcelona, Barcelona.
- Delgado, J.M., 1994. La industria de la construcción naval catalana (1750-1850). *Drassana* 2, 34–39.
- Demske, D., Tarasov, P.E., Leipe, C., Kotliá, B.S., Joshi, L.M., Long, T.W., 2016. Record of vegetation, climate change, human impact and rearing of hemp in Garhwal Himalaya (India) during the past 4600 years. *Holocene* 26, 1661–1675.
- Dörfler, W., 1990. Die Geschichte des Hanfanbaus in Mitteleuropa aufgrund palynologischer Untersuchungen und von Großrestnachweisen. *Prähistorische Z.* 65, 218–244.
- Duvall, C., 2014. *Cannabis*. Reaktion, London.
- Ejarque, A., Julià, R., Riera, S., Palet, J.M., Orengo, H.A., Miras, Y., Gascón, C., 2009. Tracing the history of highland human management in the eastern Pre-Pyrenees: an interdisciplinary palaeoenvironmental study at the Pradell fen, Spain. *Holocene* 19, 1241–1255.
- Ejarque, A., Miras, Y., Riera, S., Palet, J.M., Orengo, A., 2010. Testing micro-regional variability in the Holocene shaping of high mountain cultural landscapes: a palaeoenvironmental case-study in the eastern Pyrenees. *J. Archaeol. Sci.* 37, 1468–1479.
- Ejarque, A., Julià, R., Reed, J.M., Mesquita-Joanes, F., Marco-Barba, J., Riera, S., 2016. Coastal evolution in a Mediterranean microtidal zone: Mid to Late Holocene natural dynamics and human management of the Castelló Lagoon, NE Spain. *PLoS One* 11, e0155446.
- Exposito, M.I., 2006. Reconstrucción Paleambiental de los Niveles Neolíticos de la Cueva de El Mirador, Sierra de Atapuerca, Burgos. MS dissertation, Universitat Rovira i Virgili, Tarragona.
- Fernández, S., Carrión, J.S., Ochando, J., González-Sampérez, P., Munuera, M., Amorós, J.M., Postigo-Mijarra, J.M., Morales-Molino, C., García-Murillo, P., Jiménez-Moreno, G., López-Sáez, J.A., Jiménez-Espejo, F.J., Cáceres, L.M., Rodríguez-Vidal, J., Finlayson, G., Finlayson, S., Finlayson, C., 2021. New palynological data from the Late Pleistocene glacial refugium of South-West Iberia: the case of Doñana. *Rev. Palaeobot. Palynol.* 290, 104431.
- Fleming, M.P., Clarke, R.C., 1998. Physical evidence for the antiquity of *Cannabis sativa* L. *J. Int. Hemp Assoc.* 5, 80–92.
- Franco-Mugica, F., García-Antón, M., Sainz, H., 1998. Vegetation dynamics and human impact in the Sierra de Guadarrama, Central System, Spain. *Holocene* 8, 69–82.
- Frigola, J., Moreno, A., Cacho, I., Canals, M., Siero, F.J., Flores, J.A., Grimalt, J.O., Hodell, D.A., Curtis, J.H., 2007. Holocene climatic variability in the western Mediterranean region from a deepwater sediment record. *Paleoceanography* 22, PA2209.
- García-Antón, M., 1989. Estudio Palinológico de los Yacimientos Mesopleistocenos de Atapuerca (Burgos): Reconstrucción Paisajística y Paleoclimática. PhD dissertation, Universidad Autónoma de Madrid, Madrid.
- García-Martínez, de Lagrán, I., 2015. Recent data and approaches on the Neolithization of the Iberian Peninsula. *Eur. J. Archaeol.* 18, 429–435.
- Gearey, B.R., Hall, A.R., Bunting, M.J., Lillie, M.C., Kenward, H., Carrott, J., 2005. Recent palaeoenvironmental evidence for the processing of hemp (*Cannabis sativa* L.) in eastern England during the medieval period. *Mediev. Archaeol.* 49, 317–322.
- Godwin, H., 1967. Pollen-analytical evidence for the cultivation of Cannabis in England. *Rev. Palaeobot. Palynol.* 4, 71–80.
- González-Sampérez, P., Leroy, S.A.G., Carrión, J.S., Fernández, S., García-Antón, M., Gil-García, M.J., Uzquiano, P., Valero-Garcés, B., Figueiral, I., 2010. Steppes, savannahs, forests and phytodiversity reservoirs during the Pleistocene in the Iberian Peninsula. *Rev. Palaeobot. Palynol.* 162, 427–457.
- González-Sampérez, P., Aranbarri, J., Pérez-Sanz, A., Gil-Romera, G., Moreno, A., Leunda, M., Sevilla-Callejo, M., Corella, J.P., Morellón, M., Oliva, B., Valero-Garcés, B., 2017. *Catena* 149, 668–688.
- Guerra, E., López-Sáez, J.A., 2006. El registro arqueobotánico de plantas psicoactivas en la Prehistoria de la Península Ibérica. Una aproximación etnobotánica y fitoquímica a la interpretación de la evidencia. *Complutum* 17, 7–24.
- Hewitt, G.M., 1999. Post-glacial recolonization of European biota. *Biol. J. Linn. Soc.* 68, 87–112.
- Hölzer, A., Hölzer, A., 1998. Silicon and titanium in peat profiles as indicators of human impact. *Holocene* 8, 685–696.
- Iglesias, V., Vannié, B., Jouffroy-Bapicot, I., 2021. Emergence and evolution of anthropogenic landscapes in the Western Mediterranean and Adjacent Atlantic Regions. *Fire* 2, 53.
- Jalut, G., Dedoubat, J.-J., Fortugne, M., Otto, T., 2009. Holocene circum-Mediterranean vegetation changes: climate forcing and human impact. *Quat. Int.* 200, 4–18.
- Julià, R., Burjachs, F., Dasí, M.J., Mezquita, F., Miracle, M.R., Roca, J.R., Seret, G., Vicente, E., 1998. Meromixis origin and recent trophic evolution in the Spanish mountain lake La Cruz. *Aquat. Sci.* 60, 279–299.
- Julià, R., Luque, J.A., Riera, S., Alejandro, J.A., 2007. Climatic and land use changes on the NW of Iberian Peninsula recorded in a 1,500-year record from Lake Sanabria. *Contrib. Sci.* 3, 355–369.
- Kittel, P., Muzolf, B., Plóciennik, M., Elias, S., Brooks, S.J., Lutyńska, M., Pawlowski, D., Stachowicz-Rybka, R., Wacnik, A., Okupny, D., Glab, Z., Mueller-Bieniek, A., 2014. A multi-proxy reconstruction from Lutomiensk-Koziówki, Central Poland, in the context of early modern hemp and flax processing. *J. Archaeol. Sci.* 50, 318–337.
- Leppard, T.P., 2014. Mobility and migration in the Early Neolithic of the Mediterranean: questions of motivation and mechanism. *World Archaeol.* 46, 484–501.
- Loidi, J., 2017. Introduction to the Iberian Peninsula, general features: geography, geology, name, brief history, land use and conservation. In: Loidi, J. (Ed.), *The Vegetation of the Iberian Peninsula*. Springer, Cham, pp. 3–27.
- López-Merino, L., Colás-Ruiz, N.R., Adame, M.F., Serrano, O., Martínez, A., Mateo, M.A., 2017. A six thousand-year record of climate and land-use change from Mediterranean seagrass mats. *J. Ecol.* 105, 1267–1278.
- López-Sáez, J.A., 2012. Análisis paleobotánicos. In: Fernández, C., Gil, F., Salido, J., Zarzalejos, M. (Eds.), *El Horreu de la Villa Romana de Veranes (Gijón, Asturias)*. Primer Testimonio Material de los Hórros de Asturias. Universidad Nacional de Educación a Distancia, Madrid, pp. 161–170.
- López-Sáez, J.A., López, P., Martín, M., 2001. Análisis palinológico del yacimiento arqueológico de Pocito Chico (El Puerto de Santa María): el paisaje prehistórico y protohistórico durante el Holoceno reciente en las marismas de Cádiz. *Cuatern. Geomorfología* 15, 45–59.
- López-Sáez, J.A., García, P., Martín, M., 2002. Palaeoecology and Holocene environmental change from a saline lake in South-West Spain: protohistorical and prehistorical vegetation in Cádiz Bay. *Quat. Int.* 93–94, 197–206.
- López-Sáez, J.A., Parceró, C., Lima, E., López, P., Criado, F., Macías, R., Martínez, A., Franco, S., 2003a. Paleopaisajes concretos: polen, suelos y arqueología del yacimiento de As Pontes (Abadín, Lugo). *Trab. Prehist.* 60, 139–151.
- López-Sáez, J.A., Macías, R., López, P., 2003b. Apéndice 4. Informe palinológico. *Trab. Arqueol. Patrim.* 32, 55–59.
- López-Sáez, J.A., López-Merino, L., Mateo, M.A., Serrano, O., Pérez-Díaz, S., Serrano, L., 2009. Palaeoecological potential of the marine organic deposits of *Posidonia oceanica*: a case study in the NE Iberian Peninsula. *Palaeogeogr. Palaeoclimatol. Palaeoecol.* 271, 215–224.
- Macías, R., López, P., López-Sáez, J.A., 1996. Análisis palinológicos en el sureste madrileño: yacimientos arqueológicos y depósitos naturales. *Bot. Macaronés* 23, 241–253.
- Mann, M.E., Zhang, Z., Rutherford, S., Bradley, R.S., Hughes, M.K., Shindell, D., Ammann, C., Faluvegi, G., Ni, F., 2009. Global signatures and dynamic origins of the Little Ice Age and Medieval Climate Anomaly. *Science* 326, 1256–1260.
- Manzano, S., Carrión, J.S., López-Merino, L., Ochando, J., Munuera, M., Fernández, S., González-Sampérez, P., 2018. Early to mid-Holocene spatiotemporal vegetation changes and tsunami impact in a paradigmatic coastal transitional system (Doñana National Park, southwestern Europe). *Glob. Planet. Change* 161, 66–81.
- Marín, M., 1995. Atlas Histórico. Special edition for *Encyclopaedia Britannica*. Ed. Marín, Barcelona.
- Martin-Chivelet, J., Muñoz-García, M.B., Edwards, L.R., Turrero, M.J., Ortega, A.I., 2011. Land surface temperature changes in Northern Iberia since 4000 yr BP, based on $\delta^{13}\text{C}$ of speleothems. *Glob. Planet. Change* 77, 1–12.
- McPartland, J.M., 2018. *Cannabis* systematics at the levels of family, genus and species. *Cannabis Cannabinoid Res.* 3, 203–212.
- McPartland, J.M., Hegman, W., 2018. *Cannabis* utilization and diffusion patterns in prehistoric Europe: a critical analysis of archaeological evidence. *Veg. Hist. Archaeobot.* 27, 627–634.
- McPartland, J.M., Guy, G.W., Hegman, W., 2018. *Cannabis* is indigenous to Europe and cultivation began during Copper or Bronze Age: a probabilistic synthesis of fossil pollen studies. *Veg. Hist. Archaeobot.* 27, 635–648.
- McPartland, J.M., Hegman, W., Long, T.W., 2019. *Cannabis* in Asia: its center of origin and early cultivation, based on a synthesis of subfossil pollen and archaeological studies. *Veg. Hist. Archaeobot.* 28, 691–702.
- Médail, F., Diadema, K., 2009. Glacial refugia influence plant diversity patterns in the Mediterranean basin. *J. Biogeogr.* 36, 1333–1345.
- Médail, F., Quetzel, P., 1997. Hot-spots analysis for conservation of plant diversity in the Mediterranean basin. *Ann. Mo. Bot. Gard.* 84, 12–127.
- Mercuri, A.M., Accorsi, C.A., Bandini, M., 2002. The long history of *Cannabis* and its cultivation by the Romans in central Italy, shown by pollen records from Lago Albano and Lago di Nemi. *Veg. Hist. Archaeobot.* 11, 263–276.
- Miras, Y., Ejarque, A., Riera, S., Palet, J.M., Orengo, H., Euba, I., 2007. Dynamique Holocène de la végétation et occupation des Pyrénées andorranes depuis le Néolithique ancien, d'après l'analyse pollinique de la tourbière de Bosc dels Estanyons (2180 n, Vall del Madriu, Andorre). *C R Palevol* 6, 291–300.
- Morellón, M., Valero-Garcés, B., González-Sampérez, P., Vegas-Villarrúbia, T., Rubio, E., Rieradevall, M., Delgado-Huertas, A., Mata, P., Romero, Ó., Engstrom, D.R., López-Vicente, M., Navas, A., Soto, J., 2011. Climate changes and human activities recorded in the sediments of Lake Estanya (NE Spain) during the Medieval Warm Period and Little Ice Age. *J. Paleolimnol.* 4, 423–452.
- Muñoz-Sobrinó, C., Heiri, O., Hazekamp, M., van der Velden, D., Kirilova, E.P., García-Moreiras, I., Lotter, A.F., 2013. New data on the Lateglacial Period of SW Europe: a high resolution multiproxy record from Laguna de la Roya (NW Iberia). *Quat. Sci. Rev.* 80, 58–77.
- Muñoz-Sobrinó, C., García-Moreiras, I., Gómez-Orellana, L., Iriarte-Chiapusso, M.J., Heiri, O., Lotter, A.F., Ramil-Rego, P., 2018. The last herbaceous forests in SW Europe: new evidence on the demise of *Carpinus betulus* in NW Iberia. *Veg. Hist. Archaeobot.* 27, 551–576.
- Munuera, M., Carrión, J.S., Navarro, C., 2006. Seasonal fluctuations of the airborne pollen spectrum in Murcia (SE Spain). *Aerobiologia* 18, 141–151.
- Nakagawa, T., de Beaulieu, J.B., Kitagawa, H., 2000. Pollen-derived history of timber exploitation from the Roman period onwards in the Romanche valley, central French Alps. *Veg. Hist. Archaeobot.* 9, 85–89.

- Ochando, J., Carrión, J.S., Blasco, R., Fernández, S., Amorós, G., Munuera, M., Sañudo, P., Fernández Peris, J., 2019. Silvicolous Neanderthals in the far West: the mid-Pleistocene palaeoecological sequence of Bolomor Cave (Valencia, Spain). *Quat. Sci. Rev.* 217, 247–267.
- Ochando, J., Carrión, J.S., Blasco, R., Rivals, F., Rufá, A., Demuro, M., Arnold, L.J., Amorós, G., Munuera, M., Fernández, S., Rosell, J., 2020a. Neanderthals in a highly diverse, mediterranean-Euroasian forest ecotone: the pleistocene pollen record of Teixoneres Cave, northeastern Spain. *Quat. Sci. Rev.* 241, 106249.
- Ochando, J., Carrión, J.S., Blasco, R., Rivals, F., Rufá, A., Amorós, G., Munuera, M., Fernández, S., Rosell, J., 2020b. The Late Quaternary pollen sequence of Toll Cave, a palaeontological site with evidence of human activities in northeastern Spain. *Quat. Int.* 554, 1–14.
- Pantaleón-Cano, J., Yll, E.-Y., Pérez-Obiol, R., Roure, J.M., 2003. Palynological evidence for vegetational history in semi-arid areas of the western Mediterranean (Almería, Spain). *Holocene* 13, 109–119.
- Parra, I., Campo, Van, Otto, T. E., 2005. Análisis palinológico y radiométrico del sondeo Sobrestany. Nueve milenios de historia ambiental e impactos humanos sobre la vegetación del Alt Empordà. *Empúries* 54, 33–44.
- Peglar, S.M., 1993. The development of the cultural landscape around Diss Mere, Norfolk, UK, during the past 7000 years. *Rev. Palaeobot. Palynol.* 76, 1–47.
- Pérez-Obiol, R., Julià, R., 1994. Climatic change on the Iberian Peninsula recorded in a 30,000-yr pollen record from Lake Banyoles. *Quat. Res.* 41, 91–98.
- Pérez-Obiol, R., Roure, J.M., Vilar, L., 1991. History of some plant communities of the Sils zone (La Selva, Catalonia, Spain) based on pollen analysis. *Sci. Gerund.* 17, 37–44.
- Pérez-Obiol, R., Jalut, G., Julià, R., Pelachs, A., Iriarte, M.J., Otto, T., Hernández-Belouqui, B., 2011. Mid-Holocene vegetation and climatic history of the Iberian Peninsula. *Holocene* 21, 75–93.
- Portillo, M., Ball, T.B., Wallace, M., Murphy, C., Pérez-Díaz, S., Ruiz Alonso, M., Aceituno, F.J., López-Sáez, J.A., 2020. Advances in morphometrics in archaeology. *Environ. Archaeol.* 25, 246–256.
- Ramos-Román, M.J., Jiménez-Moreno, G., Camuera, J., García-Alix, A., Anderson, R.S., Jiménez-Espejo, F.J., Carrión, J.S., 2018. Holocene climate aridification trend and human impact interrupted by millennial- and centennial-scale climate fluctuations from a new sedimentary record from Padul (Sierra Nevada, southern Iberian Peninsula). *Clim. Past* 14, 117–137.
- Ren, G., Zhang, X., Li, Y., Ridout, K., Serrano, M.L., Yang, Y., Liu, A., Ravikanth, G., Nawaz, M.A., Mumtaz, A.S., Salamin, N., Fumagalli, L., 2021. Large-scale whole-genome resequencing unravels the domestication history of *Cannabis sativa*. *Sci. Adv.* 7, eabg2286.
- Renssen, H., Seppä, H., Crosta, X., Gosse, H., Roche, D.M., 2012. Global characterization of the Holocene Thermal Maximum. *Quat. Sci. Rev.* 48, 7–19.
- Revelles, J., Cho, S., Iriarte, E., Burjachs, F., van Geel, B., Palomo, A., Piqué, R., Peña-Chocarro, L., Terradas-Batlle, X., 2015. Mid-Holocene vegetation history and Neolithic land-use in the Lake Banyoles area (Girona, Spain). *Palaeogeogr. Palaeoclimatol. Palaeoecol.* 435, 70–85.
- Revelles, J., Burjachs, F., van Geel, B., 2016. Pollen and non-pollen palynomorphs from the Early Neolithic settlement of La Draga (Girona, Spain). *Rev. Palaeobot. Palynol.* 225, 1–20.
- Riera, S., Esteban, A., 1997. Relations homme-milieu végétal pendant les cinq derniers millénaires dans la plaine littorale du Penedès (nord-est de la Péninsule Ibérique). *Vie Milieu* 47, 53–68.
- Riera, S., Palet, J.M., 2005. Aportaciones de la palinología a la historia del paisaje mediterráneo: estudio de los sistemas de terrazas en las sierras litorales catalanas desde la perspectiva de la arqueología ambiental y del paisaje. *Monogr. Del SERC* 55, 55–74.
- Riera, S., Palet, J.M., 2008. Una aproximación multidisciplinar a la historia del paisaje mediterráneo: la evolución de los sistemas de terrazas con muros de piedra seca en la sierra de Marina (Badalona, Llano de Barcelona). In: Garrabou, R., Naredo, J.M. (Eds.), *El Paisaje en Perspectiva Histórica. Formación y Transformación del Paisaje en el Mundo Mediterráneo*. Diputación de Zaragoza, Zaragoza, pp. 47–90.
- Riera, S., Wansard, G., Julià, R., 2004. 2000-Year environmental history of a karstic lake in the Mediterranean Pre-Pyrenees: the Estanya lakes (Spain). In: Catena, S., pp. 293–324.
- Riera, S., López-Sáez, J.A., Julià, R., 2006. Lake responses to historical land use changes in northern Spain: the contribution of non-pollen palynomorphs in a multiproxy study. In: *Rev. Palaeobot. Palynol.* 141, pp. 127–137.
- Rivas-Martínez, S., Penas, A., del Río, S., Díaz, T.E., Rivas-Sáenz, S., 2017. Bioclimatology of the Iberian Peninsula and the Balearic Islands. In: Loidi, J. (Ed.), *The Vegetation of the Iberian Peninsula*. Springer, Cham, pp. 29–80.
- Roberts, N., Fyfe, R.M., Woodbridge, J., Gaillard, M.-J., Davis, B.A.S., Kaplan, J., Marquer, L., Mazier, F., Nielsen, A.B., Sugita, S., Trondman, A.-K., Leydet, M., 2018. Europe's lost forests: a pollen-based synthesis for the last 11,000 years. *Sci. Rep.* 8, 716.
- Rosas, A., Bastir, M., Alarcón, J.A., 2019. Tempo and mode in the Neanderthal evolutionary lineage: a structuralist approach to mandible variation. *Quat. Sci. Rev.* 217, 62–75.
- Ruiz-Alonso, M., Pérez-Díaz, S., López-Sáez, J.A., 2019. From glacial refugia to the current landscape configuration: permanence, expansion and forest management of *Fagus sylvatica* L. in the Western Pyrenean Region (Northern Iberian Peninsula). *Veg. Hist. Archaeobot.* 28, 481–496.
- Rull, V., 2022. Origin, early expansion, domestication and anthropogenic diffusion of *Cannabis*, with emphasis on Europe and the Iberian Peninsula. *Perspect. Plant Ecol. Evol. Syst.* 55, 125670.
- Rull, V., Vegas-Vilarrúbia, T., 2014. Preliminary report on a mid-19th century *Cannabis* pollen peak in NE Spain: historical context and potential chronological significance. *Holocene* 24, 1378–1383.
- Rull, V., González-Sampériz, P., Corella, J.P., Morellón, M., Giralt, S., 2011. Vegetation changes in the southern Pyrenean flank during the last millennium in relation to climate and human activities: the Montcortès lacustrine record. *J. Paleolimnol.* 46, 387–404.
- Rull, V., Trapote, M.C., Safont, E., Cañellas-Boltà, N., Pérez-Zanón, N., Sigró, J., Vegas-Vilarrúbia, T., 2017. Seasonal patterns of pollen sedimentation in Lake Montcortès (Central Pyrenees) and potential applications to high-resolution paleoecology: a 2-year pilot study. *J. Paleolimnol.* 57, 95–108.
- Rull, V., Vegas-Vilarrúbia, T., Corella, J.P., Trapote, M.C., Montoya, E., Valero-Garcés, B., 2021a. Bronze Age to Medieval vegetation dynamics and landscape anthropization in the south-central Pyrenees. *Palaeogeogr. Palaeoclimatol. Palaeoecol.* 571, 110392.
- Rull, V., Vegas-Vilarrúbia, T., Corella, J.P., Trapote, M.C., Montoya, E., Valero-Garcés, B., 2021b. A unique Pyrenean varved record provides a detailed reconstruction of Mediterranean vegetation and land-use dynamics over the last three millennia. *Quat. Sci. Rev.* 268, 107128.
- Rull, V., Sacristán-Soriano, O., Sánchez-Melsió, A., Borrego, C.M., Vegas-Vilarrúbia, T., 2022. Bacterial phylogenetic markers in lake sediments provide direct evidence for historical hemp retting. *Quat. Sci. Rev.* 295, 107803.
- Sanz, V., 1995. *D'Artesans a Proletaris: la Manufactura del Cànem a Castelló, 1732–1843*. Diputació de Castelló, Castelló.
- Saura, S., Brodin, Ö., Fortin, M.-J., 2014. Stepping stones are crucial for species' long-distance dispersal and range expansion through habitat networks. *J. Appl. Ecol.* 51, 171–182.
- Schneider, H., Höfer, D., Trog, C., Busch, S., Schneider, M., Baade, J., Daut, G., Mäusbacher, R., 2010. Holocene estuary development in the Algarve Region (Southern Portugal) – a reconstruction of sedimentological and ecological evolution. *Quat. Int.* 221, 141–158.
- Schneider, H., Höfer, D., Trog, C., Mäusbacher, R., 2016. Holocene landscape development along the Portuguese Algarve coast – a high resolution palynological approach. *Quat. Int.* 407, 47–63.
- Schofield, J.E., Waller, M.P., 2005. A pollen analytical record for hemp retting from Dungeness Foreland, UK. *J. Archaeol. Sci.* 32, 715–726.
- Servera-Vives, G., Riera, S., Picornell-Gelabert, L., Moffa-Sánchez, P., Llergo, Y., García, A., Mus-Amezquita, M., García Álvarez, S., Calvo Trias, M., 2018. The onset of islandscapes in the balearic Islands: a study-case of Addaia (northern Minorca, Spain). *Palaeogeogr. Palaeoclimatol. Palaeoecol.* 498, 9–23.
- Small, E., 2015. Evolution and classification of *Cannabis sativa* (marijuana, hemp) in relation to human utilization. *Bot. Rev.* 81, 189–294.
- Szczepanek, K., 1971. Staszów karst in the light of palaeobotanical studies (South Poland). *Acta Palaeobot.* 12, 63–140.
- Toro-Moyano, I., Martínez-Navarro, B., Agustí, J., Souday, C., Bermúdez de Castro, J.M., Martín-Torres, M., Fajardo, B., Duval, M., Falguères, C., Oms, O., Parés, J.M., Anadón, P., Julià, R., García-Aguilar, J.M., Moigne, A.-M., Espigares, M.P., Ros-Montoya, S., Palmqvist, P., 2013. The oldest human fossil in Europe, from Orce (Spain). *J. Hum. Evol.* 65, 1–9.
- Trapote, M.C., Rull, V., Giralt, S., Corella, J.P., Montoya, E., Vegas-Vilarrúbia, T., 2018. High-resolution (sub-decadal) pollen analysis of varved sediments from Lake Montcortès (southern Pyrenean flank): a fine-tuned record of landscape dynamics and human impact during the last 5000 years. *Rev. Palaeobot. Palynol.* 259, 207–222.
- Vannière, B., Power, M.J., Roberts, N., Tinner, W., Carrión, J., Magny, M., 2011. Circum-Mediterranean fire activity and climate changes during the mid-Holocene environmental transition (8500–2500 cal. BP). *Holocene* 21, 53–73.
- Vannière, B., Blarquez, O., Rius, D., Doyen, É., Brücher, T., Colombaroli, D., Connor, S., Feurdean, A., Hickler, T., Kaltenrieder, P., Lemmen, C., Leys, B., Massa, C., Olofsson, J., 2016. 7000-year human legacy of elevation-dependent European fire regimes. *Quat. Sci. Rev.* 132, 206–212.
- Warf, B., 2014. High points: an historical geography of *Cannabis*. *Geogr. Rev.* 104, 414–438.
- Whittington, G., Edwards, K.J., 1989. Problems in the interpretation of Cannabaceae pollen in the stratigraphic record. *Pollen Spores* 31, 79–96.
- Whittington, G., Gordon, A.D., 1987. The differentiation of the pollen of *Cannabis sativa* L. from that of *Humulus lupulus* L. *Pollen Spores* 29, 111–120.
- Yll, E.-Y., Pérez-Obiol, R., Pantaleón-Cano, J., Roure, J.M., 1997. Palynological evidence for climatic change and human activity during the Holocene on Minorca (Balearic Islands). *Quat. Res.* 48, 339–347.
- Yll, R., Burjachs, F., Expósito, I., 2009. Descobrint els paisatges del passat. In: Marí, M. (Ed.), *Vila i Ses Feixes: els Camins de l'Aigua*. GEN-GOB Eivissa, Eivissa, pp. 19–40.