



HAL
open science

Temporal and spatial characterization of physiological noise in rs-fMRI at high temporal resolution

Olga Kuldavletova, Marin Mauboussin, Mikael Naveau, Anaïs Vandavelde, Nicolas Delcroix, Marc Joliot, Olivier M Etard

► **To cite this version:**

Olga Kuldavletova, Marin Mauboussin, Mikael Naveau, Anaïs Vandavelde, Nicolas Delcroix, et al.. Temporal and spatial characterization of physiological noise in rs-fMRI at high temporal resolution. OHBM2022, Jun 2022, Glasgow, United Kingdom. . hal-03878764

HAL Id: hal-03878764

<https://hal.science/hal-03878764v1>

Submitted on 30 Nov 2022

HAL is a multi-disciplinary open access archive for the deposit and dissemination of scientific research documents, whether they are published or not. The documents may come from teaching and research institutions in France or abroad, or from public or private research centers.

L'archive ouverte pluridisciplinaire **HAL**, est destinée au dépôt et à la diffusion de documents scientifiques de niveau recherche, publiés ou non, émanant des établissements d'enseignement et de recherche français ou étrangers, des laboratoires publics ou privés.



Distributed under a Creative Commons Attribution 4.0 International License

TEMPORAL AND SPATIAL CHARACTERIZATION OF PHYSIOLOGICAL NOISE IN RS-FMRI AT HIGH TEMPORAL RESOLUTION

Kuldavletova O¹, Mauboussin M¹, Naveau M², Vandeveldel A³, Delcroix N², Joliot M⁴, Etard O¹

(TR = 125MS)

¹ Normandie Université, UNICAEN, INSERM, COMETE, CYCERON, CHU Caen, Caen, France
² Normandie Université, UNICAEN, CNRS, UMS3408 CYCERON, Caen, France
³ CHRU de Tours, Tours, France
⁴ GIN, UMR5293, CEA, CNRS, Université de Bordeaux, Bordeaux, France

Cerebral fMRI is a useful imaging tool that allows to visualize neuronal activity based on blood oxygen levels. However, except the neuronal component of interest, fMRI signal contains "noise" components due to physiological processes (heartbeat, respiration...).

Literature contains attempts to estimate this part of the signal, but not to measure it.

This study aims to measure the respective impact of cardiac pulse and respiratory cycle on MRI signal in human brain and its regions with short TR.

17 MRI exams; 9 subjects (1 to 3 sessions per subject)

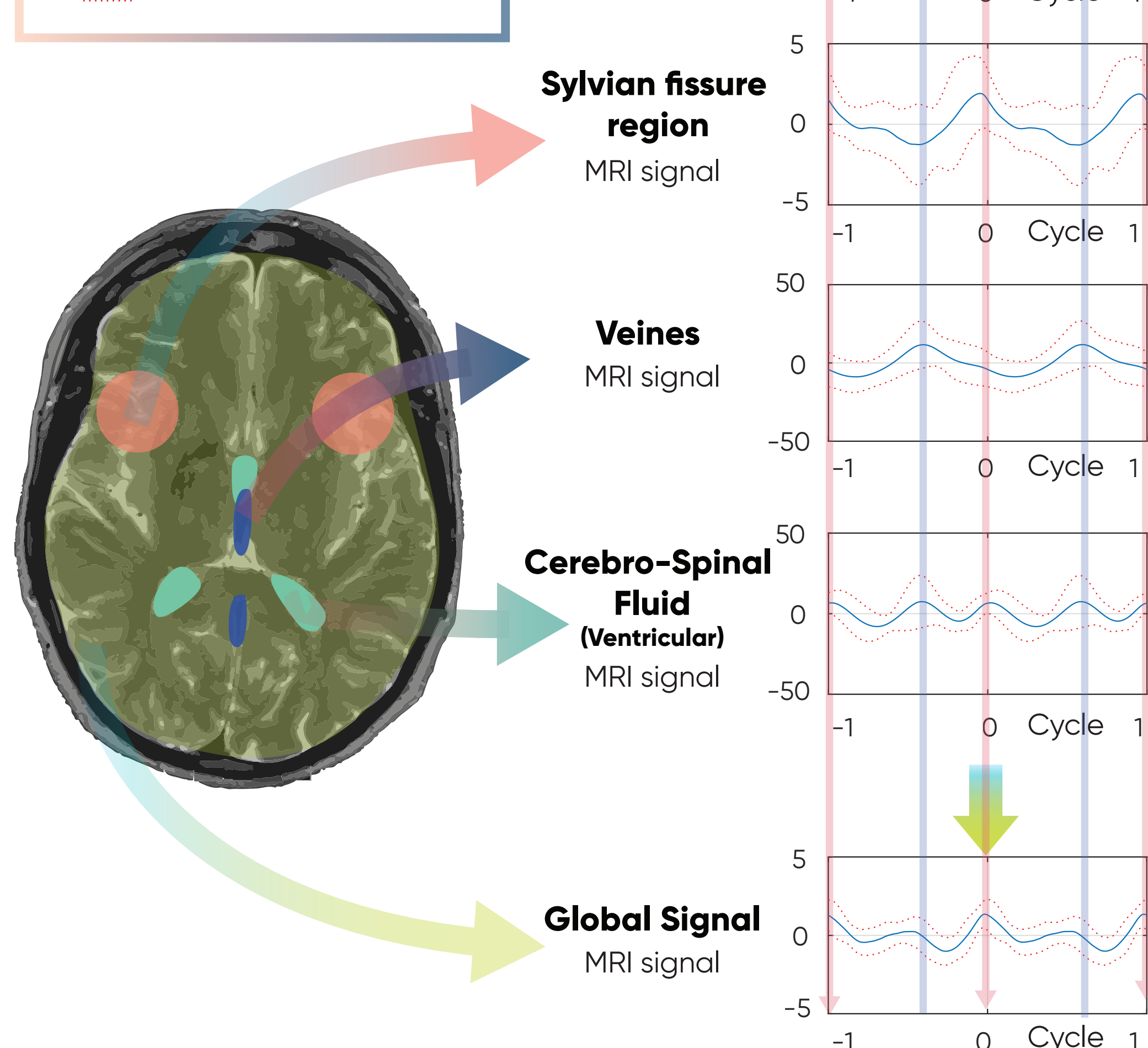
3T Philipps MRI scanner
 2D single slice EPI-GE, TR = 125 ms, TE = 30 ms, flip angle = 22°, 5 min 12 sec per session

PPG

Pneumatic thoracic respiration transducer

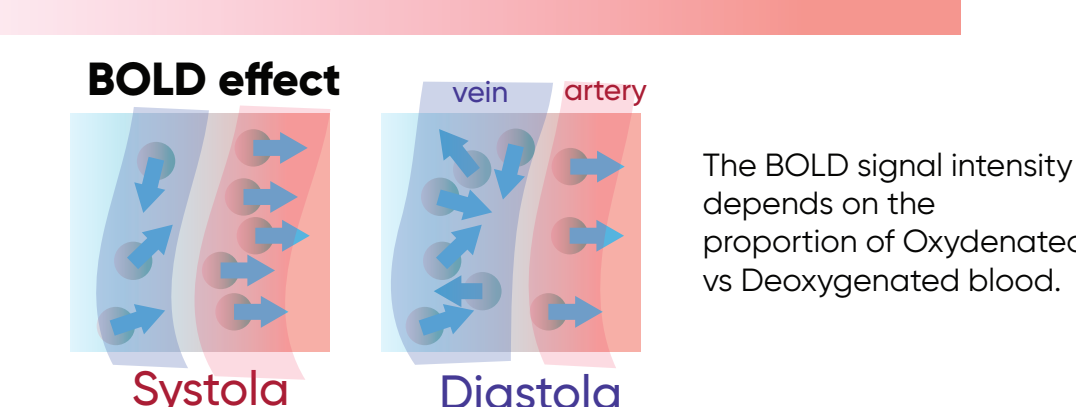
In time domain: we have computed the grand mean of the average MRI signal of each ROI across each physiological cycle aligned by the peak of each cardiac or respiratory cycle.

— Grand mean
 ... ± STD



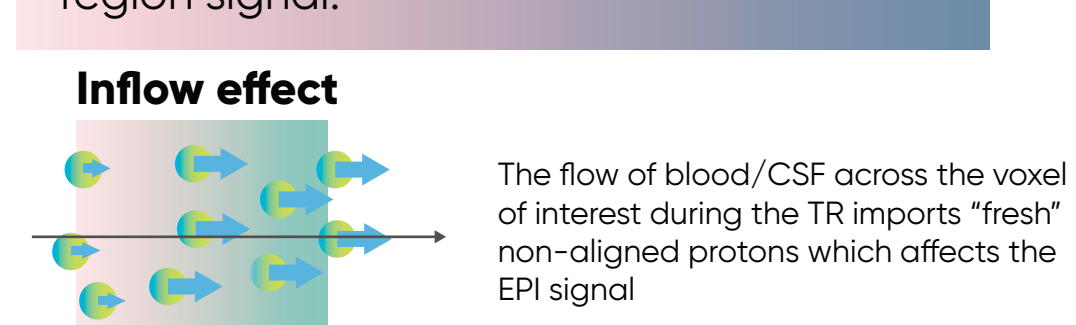
The Grand Mean of an MRI signal time series in one of the 4 regions of interest over all cardiac cycles through all scans (15) and all subjects (9).

Each cardiac contraction sends the oxygenated blood to the brain arteries and increases the venous return.



Increase in volume and inflow of Oxygenated blood in the Sylvian arterial regions during Systolic period.

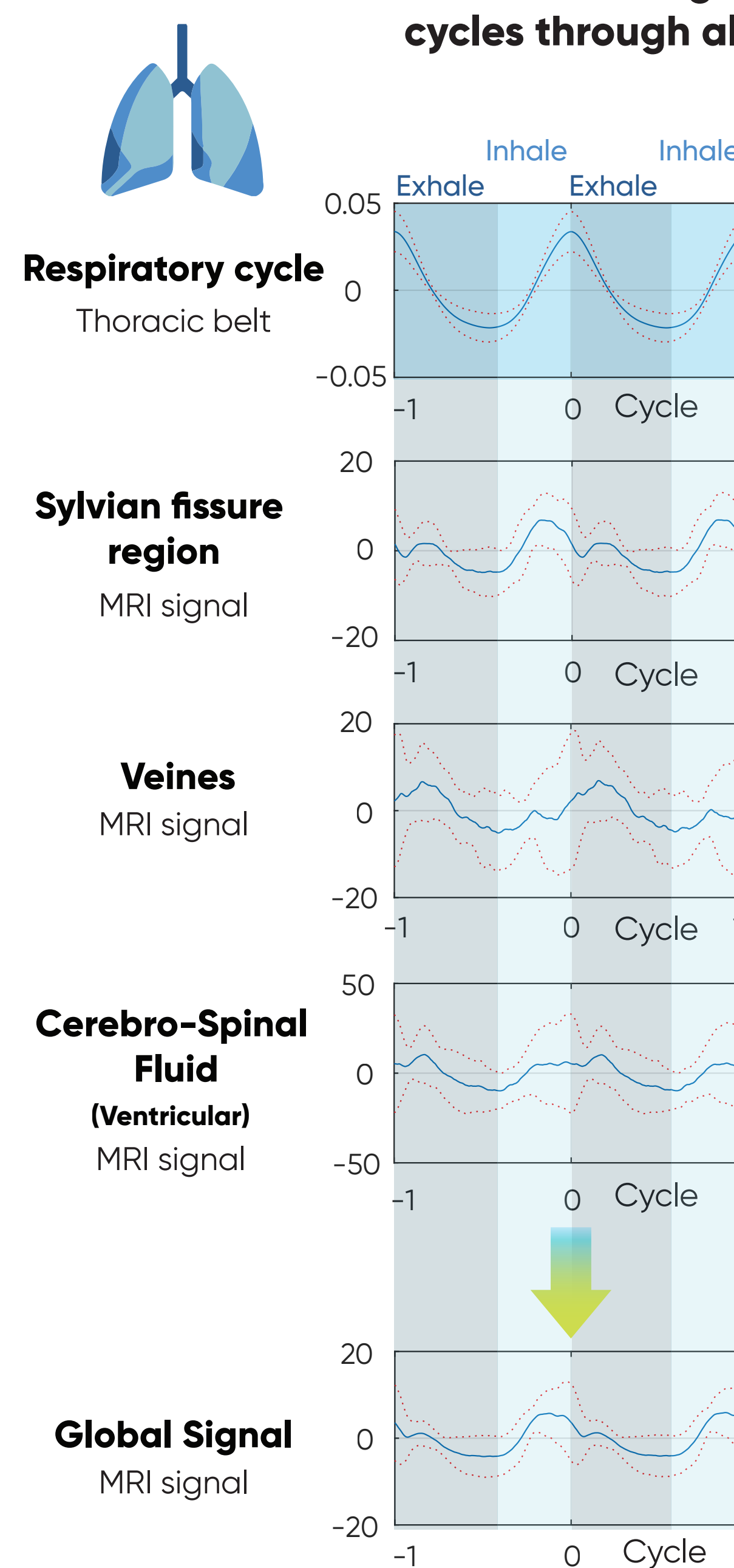
The venous return region signal is inverse in phase with respect to the arterial region signal.



CSF does not provide the BOLD signal. However, the inflow/outflow effect can provide us with information of the flow of the CSF.

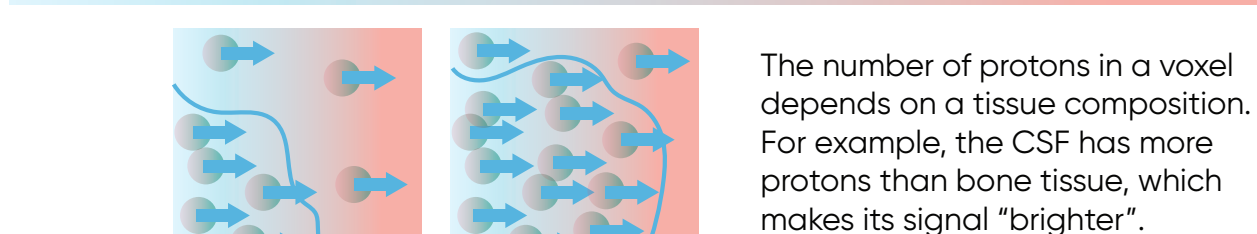
Global Signal represents a sum of the signals from all regions

The Grand Mean of an MRI signal time series in one of the 4 regions of interest over all respiratory cycles through all scans (17) and all subjects (9).



The inhale is accompanied by the drop of pressure in the chest, which increases venous return due to the pressure gradient. The emptying of veins leads to a decreased brain volume, and the compensatory CSF inflow in the meninges.

Inhale increases the proportion of the O₂ blood in the brain and increases the meningeal CSF proportion in the ROI. Both are leading to the increase of the signal.

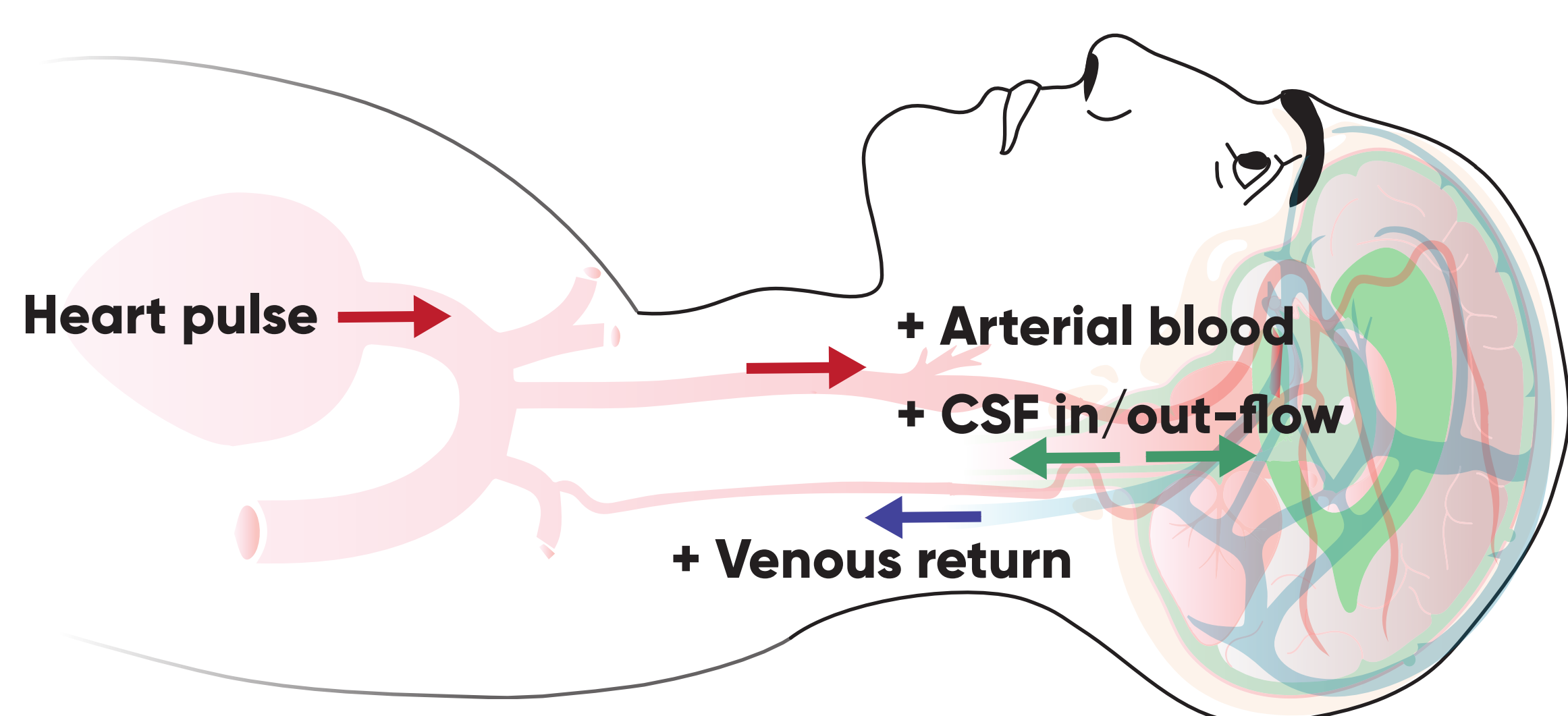


During inhale the diaphragm creates low pressure in the chest, facilitating the venous return. The signal increases due to an inflow-outflow effect of the blood flow in veins.

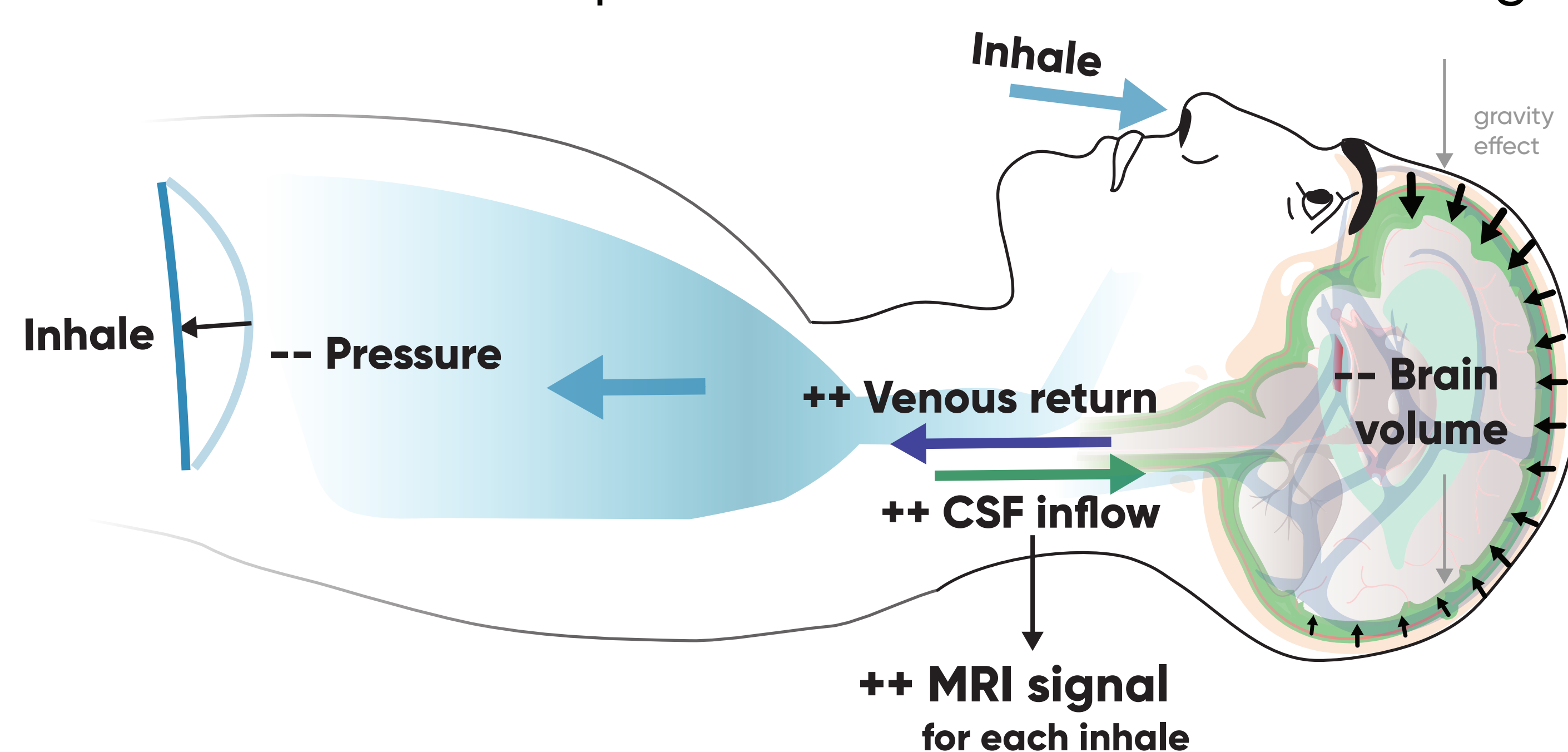
The signal from the CSF in the ventricles reflects the inflow-outflow effect by the respiratory cycle.

The effect of the respiration on Global Signal is more ample than the cardiac pulse effect.

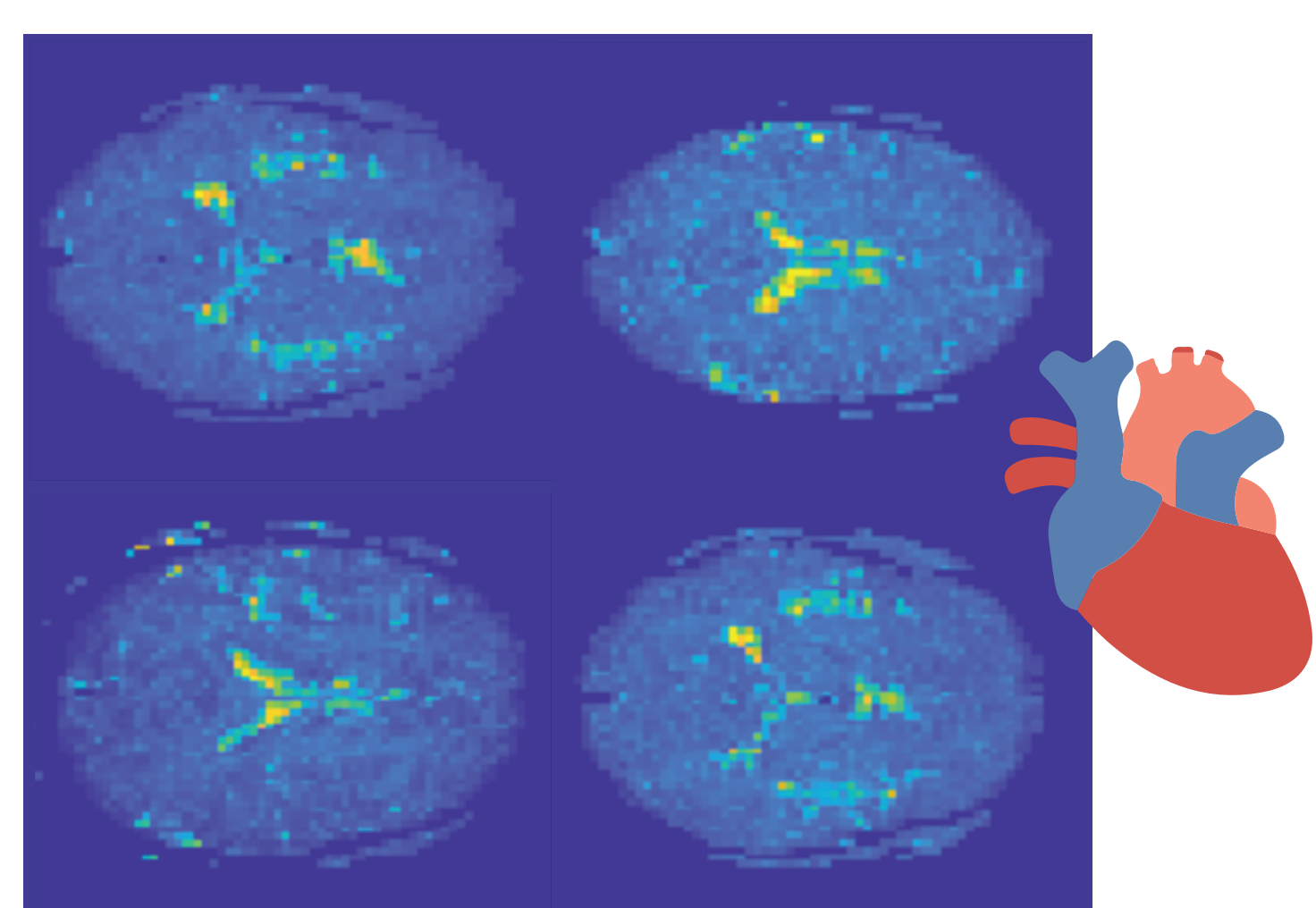
High pressure CSF circulation: the ventricles



Low pressure CSF circulation: the meninges

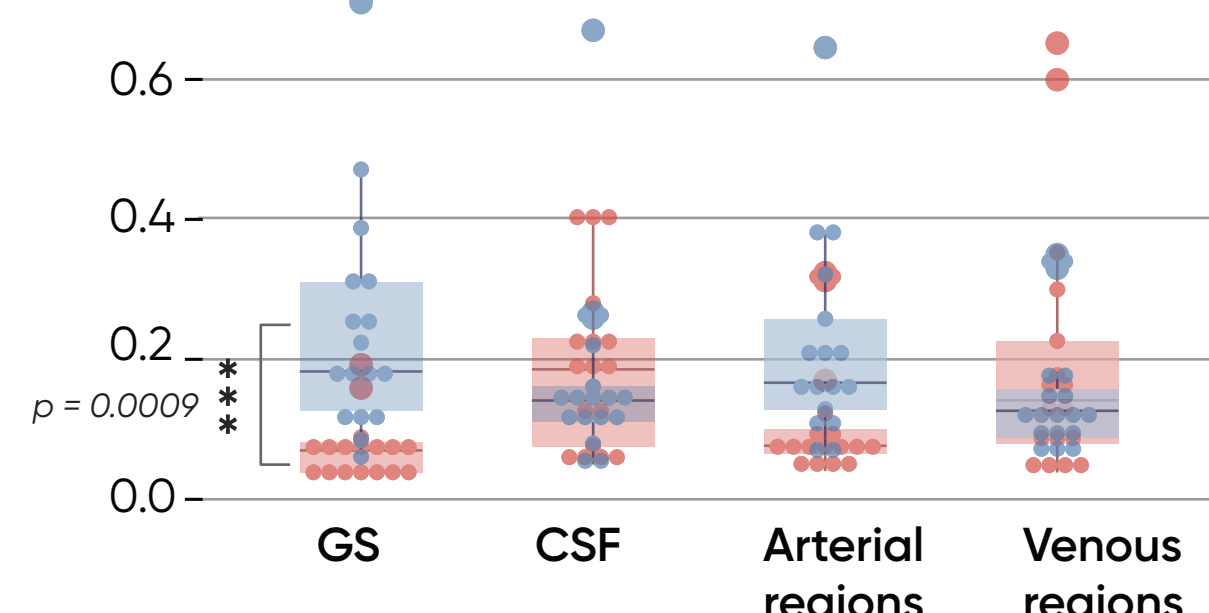


In frequency domain: we have computed the amplitudes of the spectral peaks of the MRI signal voxel-wise, at the respiratory and cardiac frequencies measured for each subject. The amplitudes of these peaks were plotted to depict the regions that are most sensible to cardiac or to respiratory oscillations.



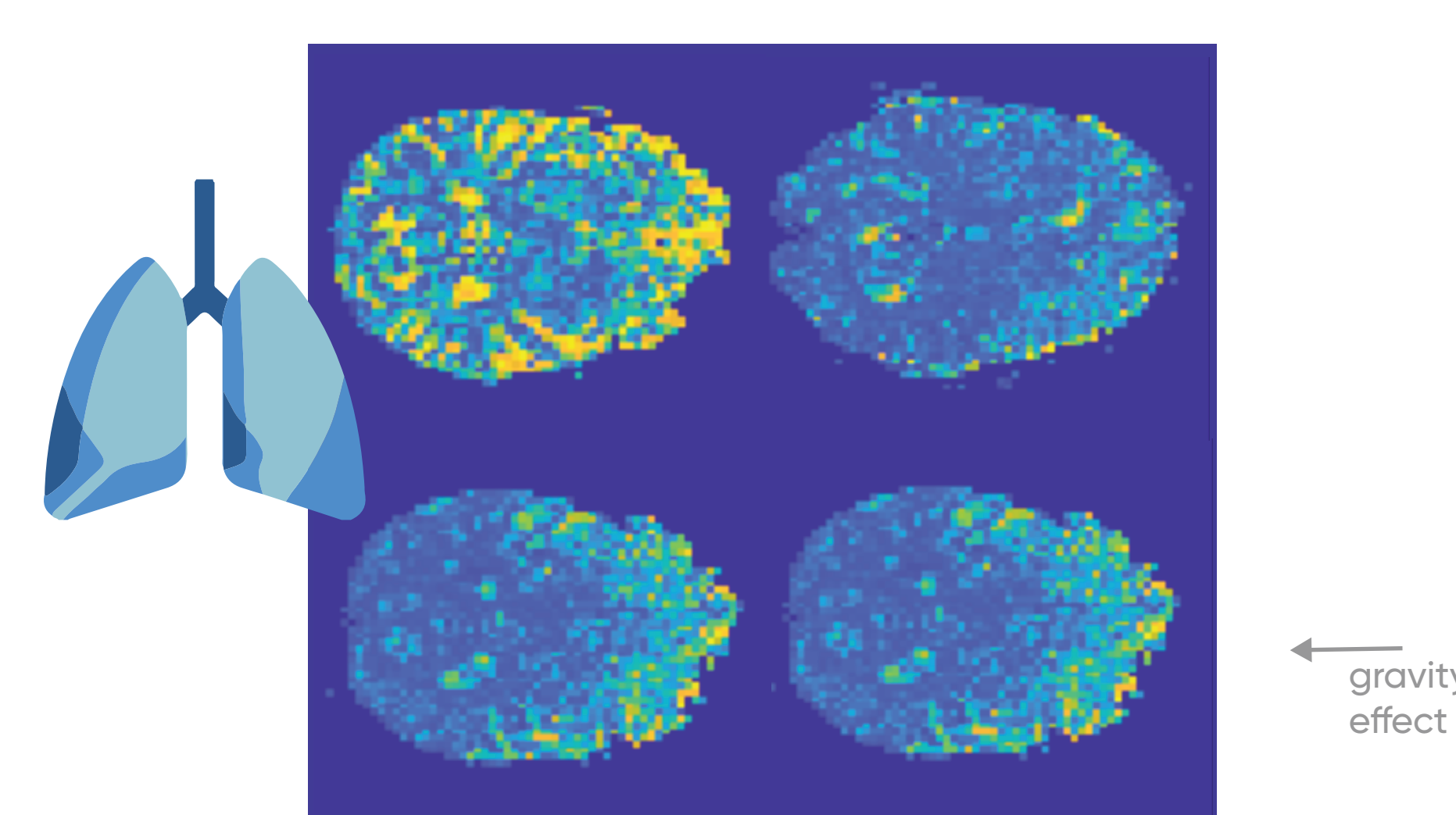
The cardiac effect is most pronounced in the motion of the CSF in ventricles and in venous outflow.

Amplitude of spectral peaks of the MRI signal or each ROI



LMM with (1) ROI and (2) cardiac/respiratory peak spectral amplitude as fixed factors, their interactions, and a subject as a random effect, Bonferroni correction

The respiratory impact in the Global signal is significantly more important than the cardiac impact.



The respiratory effect is most pronounced in the motion of the CSF in the contours of the brain, mostly the frontal part, as in the supine position gravity acts on the floating in the CSF brain, tearing it down to the back of the head.