



HAL
open science

Palaeo-environmental study of two charcoal-hearth soil sequences in the Northern Vosges mountains (Bitche, France)

Anne Gebhardt, Anne Poszwa, Vincent Robin, Vrydaghs Luc, Laurence Mansuy-Huault

► To cite this version:

Anne Gebhardt, Anne Poszwa, Vincent Robin, Vrydaghs Luc, Laurence Mansuy-Huault. Palaeo-environmental study of two charcoal-hearth soil sequences in the Northern Vosges mountains (Bitche, France). International Conference (SFE² GFÖ EEF) "Ecology & Evolution: New perspectives and societal challenges", Nov 2022, Metz, France. hal-03877762

HAL Id: hal-03877762

<https://hal.science/hal-03877762v1>

Submitted on 29 Nov 2022

HAL is a multi-disciplinary open access archive for the deposit and dissemination of scientific research documents, whether they are published or not. The documents may come from teaching and research institutions in France or abroad, or from public or private research centers.

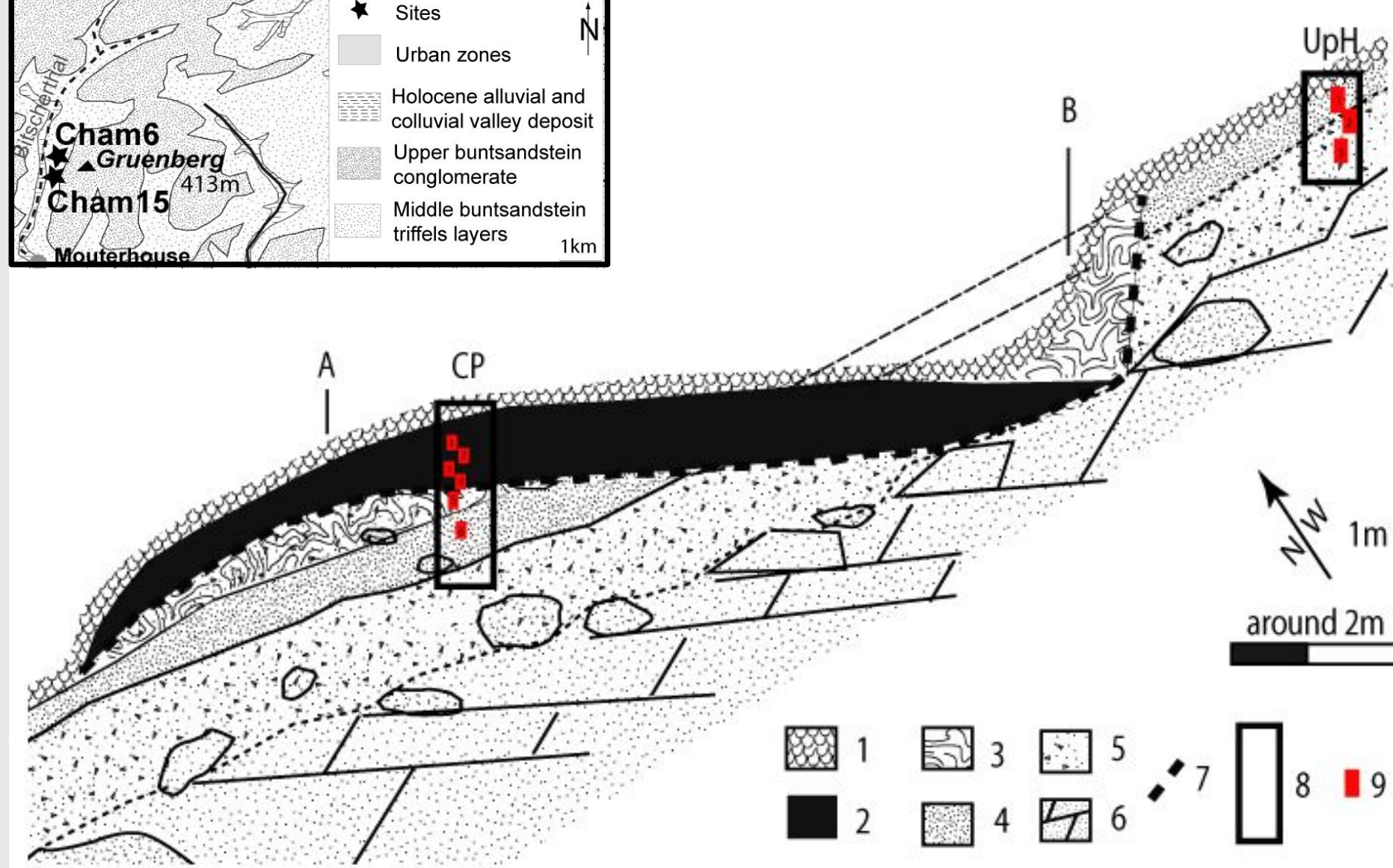
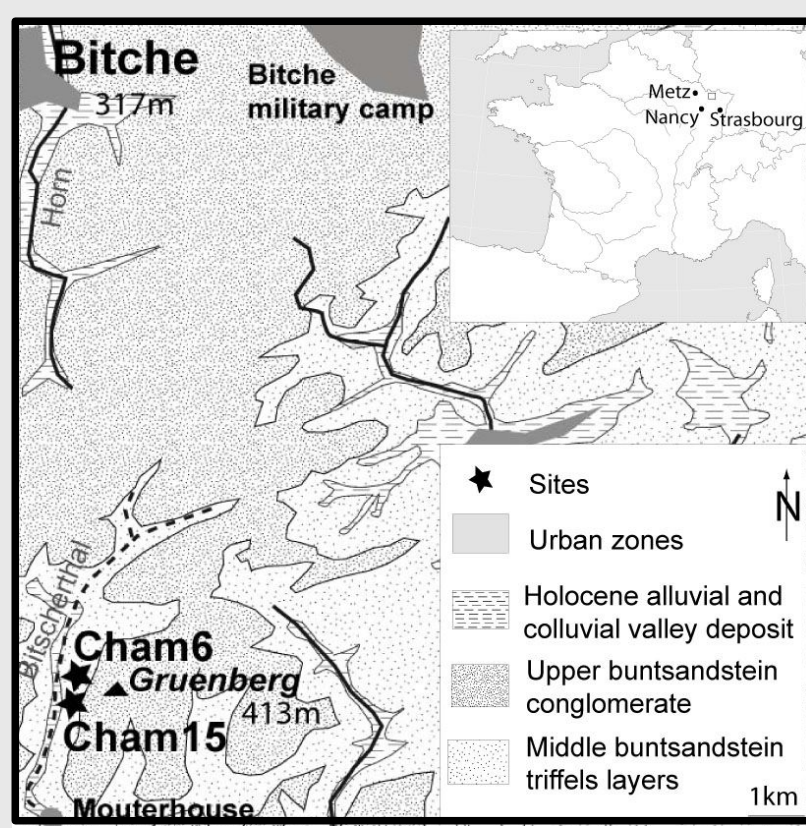
L'archive ouverte pluridisciplinaire **HAL**, est destinée au dépôt et à la diffusion de documents scientifiques de niveau recherche, publiés ou non, émanant des établissements d'enseignement et de recherche français ou étrangers, des laboratoires publics ou privés.

PALAEO-ENVIRONMENTAL STUDY OF TWO CHARCOAL-HEARTH SOIL SEQUENCES IN THE NORTHERN VOSGES MOUNTAINS (BITCHE, FRANCE)

Focussing on XVIIth century charcoal platform soil sequences, this multi-disciplinary study deciphers ecological legacy of historical charcoal production on vosgian acid sandy soils.

Site presentation

Site context: tabular low mountains (300/400m), steep slopes, wet valleys, red ferrous sandstone (Buntsandstein), oceanic current climate with well marked seasons, deciduous mixed woodland (beech, oak, ashes, maple, pine, spruce), well drained acid siliceous soils (podzols(40%) and entic podzols (10%), ancient glassworkshop, iron melting activities, forges, charcoal production.



Schematic organisation of the charcoal platform :

1. organic layers, 2. charcoal residues, 3. man-made platform,
 4. ancient organic horizons, 5. sandstone slope deposit,
 6. triassic sandstone, 7. limit of the charcoal platform surface,
 8. profiles location, 9. undisturbed bloc samples location.
- A-B. downslope longitudinal section.



CHARCOAL PLATFORMS (CP):

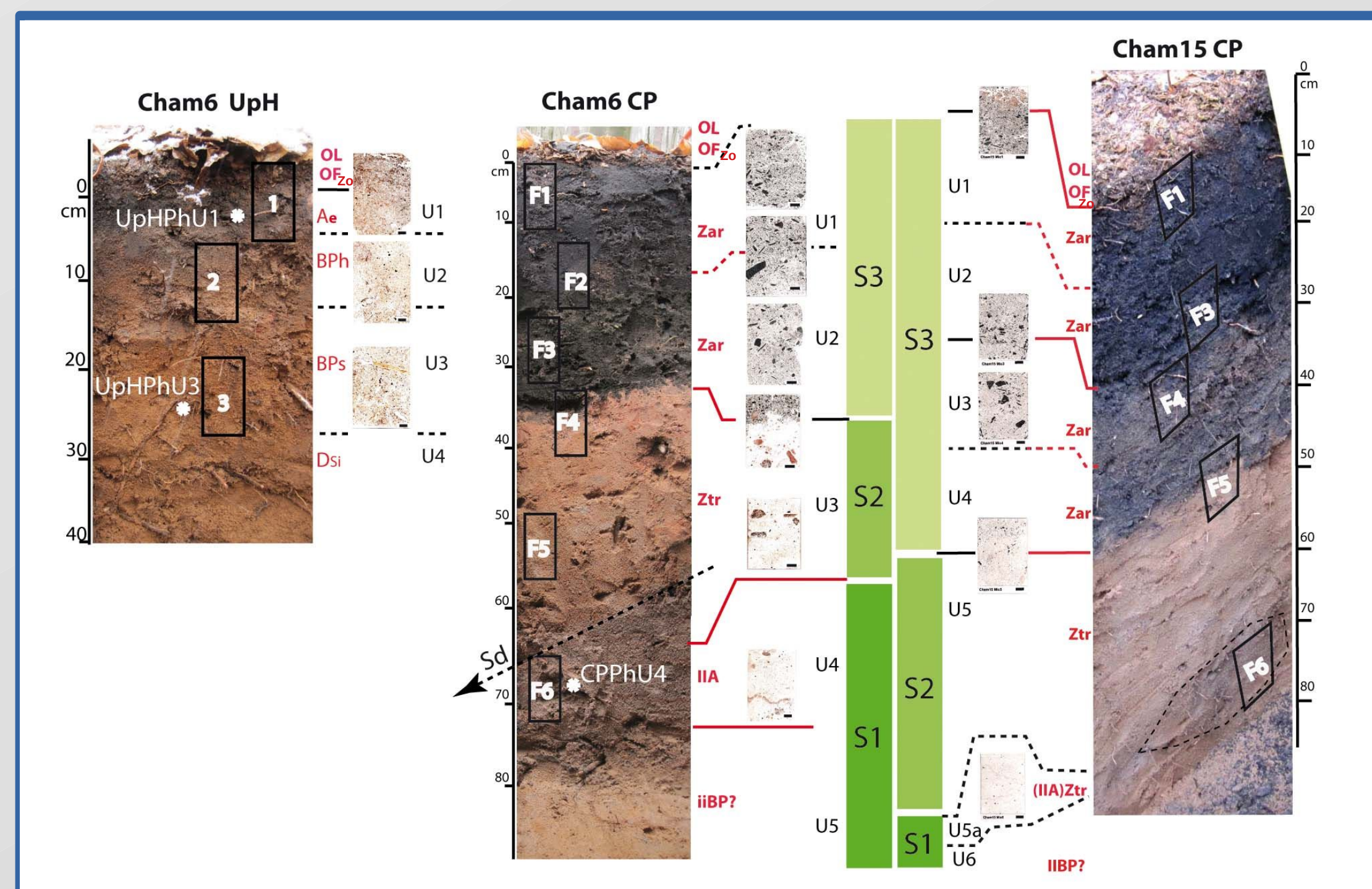
Anthroposol archéologique artificiel (RP)
 OL/OFzo: Hemimoder humus type,
 U1-U2/Cham6, U1-U2-U3-U4/Cham15: Zar
 archaeological material (ar) of human origin (Z),
 U3/Cham6, U5/Cham15) : Ztr
 geological material (tr) of human origin (Z),
 U4/Cham6: II A undisturbed buried organic horizon,
 U5a/Cham15: (II A) Ztr clumps of organic horizon,
 U5/Cham6, U6/Cham15: II BP? probable spodic horizon
 <=> **Technosol** (World Reference Base, WRB)

CURRENT UPHILL REFERENCE (UpH):

Podzsol ocrique (French soil referential, RP)

OL/OFzo: "hemimoder" humus type,
 U1: A_e eluvial horizon,
 U2: B_p] podzolic/spodic horizons,
 U3: B_p]
 U4: D_{si} sandy slope deposit.

<=> **Entic podzol** (World Reference Base)
 characterized by a spodic horizon without
 clear upper eluvial horizon (albic, WRB) on top.

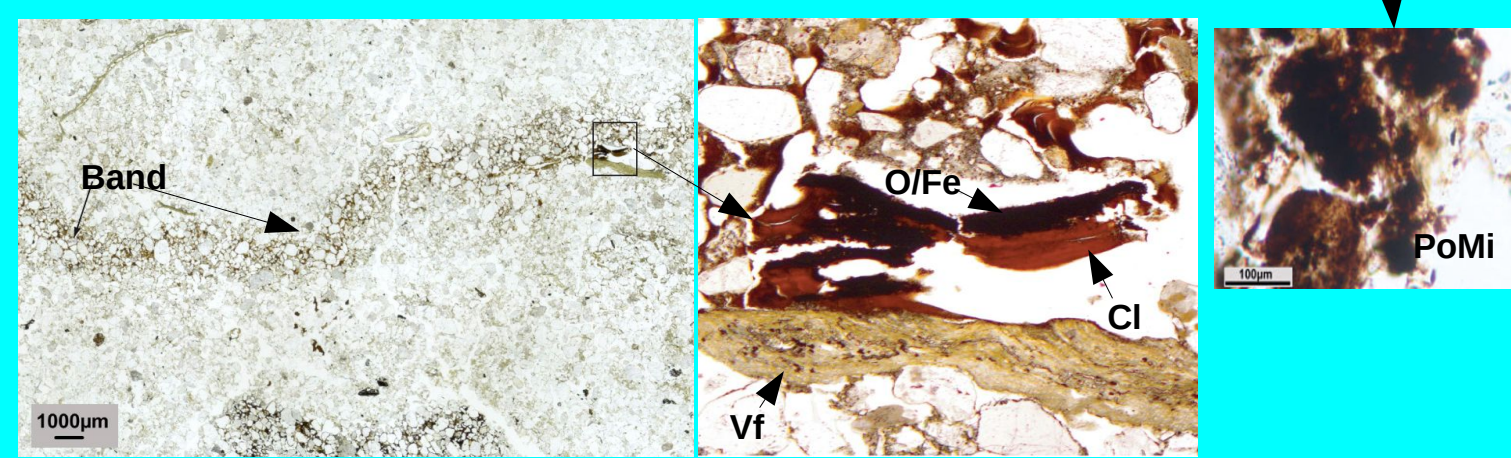


Results

Soil analysis

	Hz	Al µg/g Tamm	Fe µg/g	pH water	C _{tot} %	N _{tot} %	C _{ex} ⁺ exchangeable cmol(+)/kg
UpH	U1	A _e	668.5	856.1	4.5	3.39	0.13
	U2	B _p	1507.3	1439.2	4.2	1.78	0.05
	U3	B _p	3434.2	1872.9	4.9	1.32	0.04
	U4	D _{si}	/	/	4.9	0.97	0.03
CP Cham6	U1	Zar	1303.2	1198.1	4.24	6.21	0.19
	U2	Zar	1306.7	922.7	5.36	2.98	0.07
	U3	Zar	720.2	498.8	5.87	0.37	0.006
	U4	II A	287.2	291.6	5.92	0.65	0.002
	U5	II BP?	/	/	6.21	0.44	0.005

Main chemical characteristics of UpH et CP.
 Cham15 is similar to Cham6.



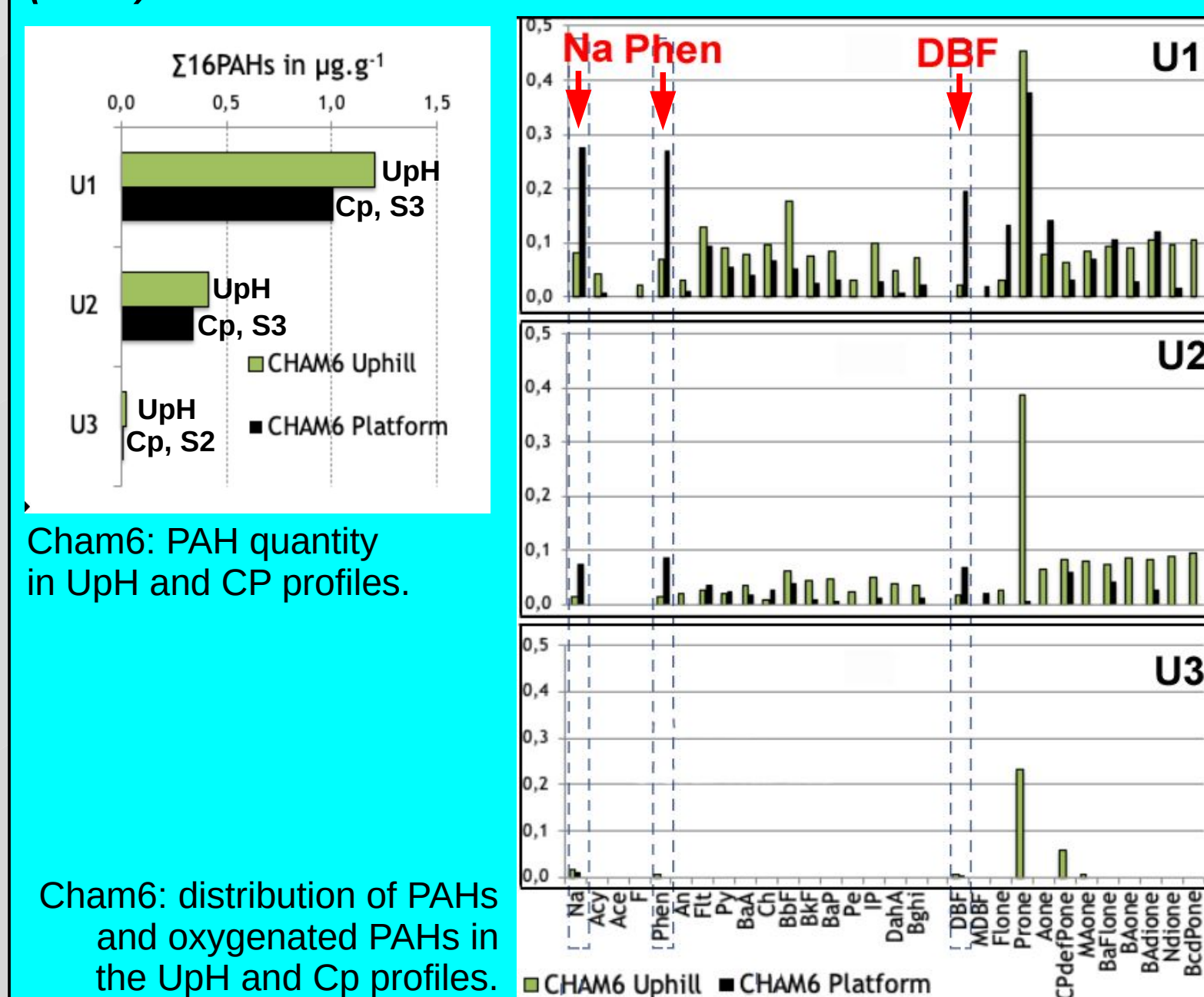
Main characteristics of the UpH reference :

- acid soil inducing low biological activity,
- polymorphic microfabric in the BP (PoMi),
- silt coating around grains and charcoals (Scoa) in all units.

Specific observation of the Cps :

- low alcalinization in the charcoal remains,
- quite fresh undisturbed plant residues (Vf) in the upper palaeosol (S1),
- iron/organic (O/Fe) + clay (Cl) bands in the upper palaeosol and the dump material units.

Polycyclic Aromatic Hydrocarbons (PAH)

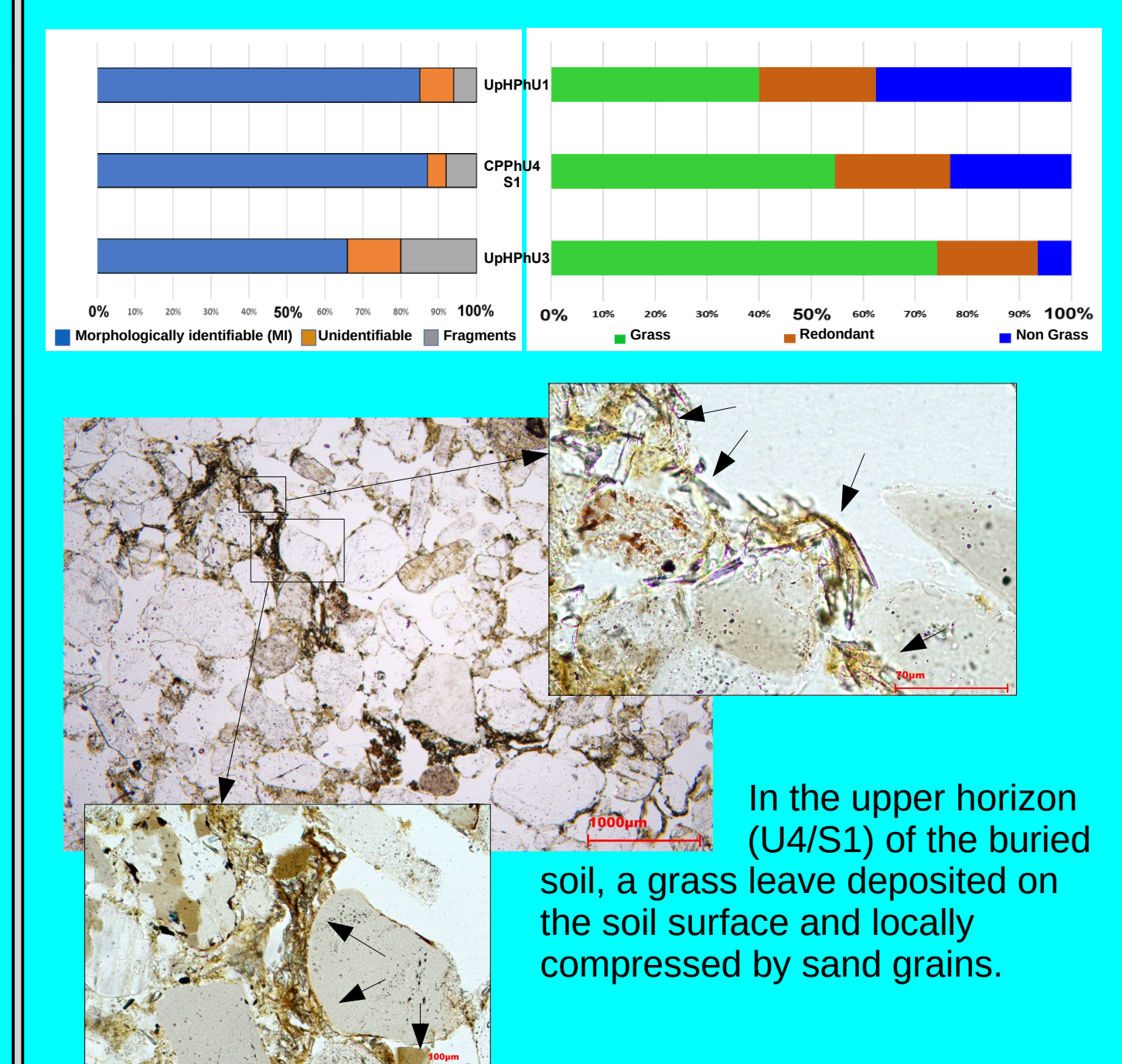


Cham6: PAH quantity in UpH and CP profiles.

Cham6: distribution of PAHs and oxygenated PAHs in the UpH and Cp profiles.

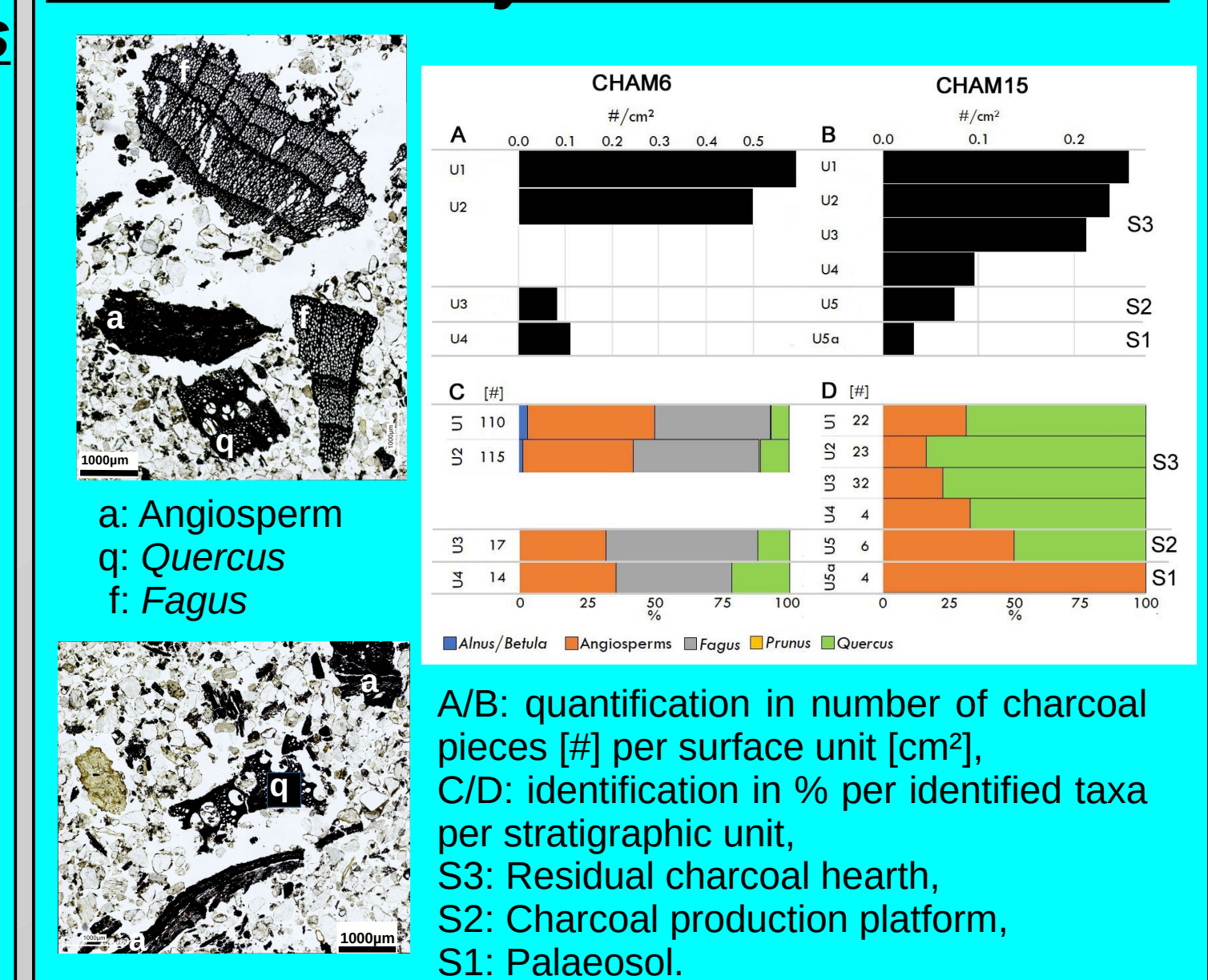
- PAH concentrations decrease downwards in UpH and CP profiles,
- no PAHs in the lower layer (S2),
- significant difference in distribution of PAH between UpH and CP profiles
- domination of Naphtalene (Na), Phenantrene (Phen) and Dibenzofuran (DBF) in the CP residual charcoal layers (U1/U2).

Phytolith analysis on thin sections



- in the current UpHPhU1 horizon grass and trees phytoliths present in similar proportions,
- in the palaeosol CPPHU4 (S1):
 - clear analogies with the phytolith record of the modern day vegetation but with a more marked record of grass phytoliths,
 - a grass leave covering the sand grains,
- in UpHPhU3: fragmented phytoliths more abundant.

Charcoal analysis on thin sections



- similar spectrum but lower taxonomical diversity observed in thin sections compared to classical analysis,
- charcoal more abundant in S3 than in S1/ S2,
- better preserved and identifiable charcoal in Cham6 than in Cham15,
- the perturbation of the palaeosol in Cham15 broke the charcoal and made them non identifiable,
- the charcoal assemblage of the the platforms and the palaeosol are similar.

Conclusions

- **Low bioactivity** induced by soil acidity allows confident interpretation of the different palaeoecological data issued from the CP soil profile.
- Fragmented phytoliths, silt cover around sand grains and very all charcoal fragment reveal **significant slope movements during quaternary sedimentary processes.**
- **The CP construction** was conducted by scraping and dumping soil horizons on the slope forming an inverted profile, and buried well the palaeosol.
- **The thickness of the II A** horizon of the palaeosol can be related to this last process and/or to past pedogenetic and climatic conditions that prevent organic matter mineralization.
- **Compaction of the ancient buried soil by the charcoal platform construction** are shown by phytolith leave.
- **Degraded forest before the charcoal production activities**, revealed by higher grass phytoliths frequencies, can result from forestry mismanagement preceding later wood coppicing regulation.
- **Charcoal analysis on thin section confirms the forest heterogeneity before the charcoal production activities.**
- **Temporarily soil alcalinization by ash may favour migration of clay, iron and organic material** in the form of discontinuous bands in the palaeosol.
- Wood burning produced specific **PAHs in the charcoal and tar balls rich upper layers of the Cp,**
- **HAPs do not migrate deeper** in the profile in this acid low bioturbated soils.