



**HAL**  
open science

## Impact of a Weight-Loss Rehabilitation Program on Sleep Apnea Risk and Subjective Sleepiness in Patients with Overweight/Obesity: The DietSleep Study

Sébastien Bailly, Odile Fabre, Mallory Cals-Maurette, Laurent Pantagis, Robin Terrail, Rémy Legrand, Arne Astrup, Jean-Louis Pépin

### ► To cite this version:

Sébastien Bailly, Odile Fabre, Mallory Cals-Maurette, Laurent Pantagis, Robin Terrail, et al.. Impact of a Weight-Loss Rehabilitation Program on Sleep Apnea Risk and Subjective Sleepiness in Patients with Overweight/Obesity: The DietSleep Study. *Journal of Clinical Medicine*, 2022, 11 (23), pp.6890. 10.3390/jcm11236890 . hal-03875877

**HAL Id: hal-03875877**

**<https://hal.science/hal-03875877>**

Submitted on 30 Nov 2022

**HAL** is a multi-disciplinary open access archive for the deposit and dissemination of scientific research documents, whether they are published or not. The documents may come from teaching and research institutions in France or abroad, or from public or private research centers.

L'archive ouverte pluridisciplinaire **HAL**, est destinée au dépôt et à la diffusion de documents scientifiques de niveau recherche, publiés ou non, émanant des établissements d'enseignement et de recherche français ou étrangers, des laboratoires publics ou privés.



Distributed under a Creative Commons Attribution 4.0 International License



Article

# Impact of a Weight-Loss Rehabilitation Program on Sleep Apnea Risk and Subjective Sleepiness in Patients with Overweight/Obesity: The DietSleep Study

Sébastien Bailly <sup>1,\*</sup> , Odile Fabre <sup>2</sup>, Mallory Cals-Maurette <sup>1</sup>, Laurent Pantagis <sup>2</sup>, Robin Terrail <sup>1</sup> , Rémy Legrand <sup>2</sup>, Arne Astrup <sup>3</sup> and Jean-Louis Pépin <sup>1</sup>

<sup>1</sup> Grenoble Alpes University, INSERM U1300, Grenoble Alpes University Hospital, 38000 Grenoble, France  
<sup>2</sup> Groupe Éthique et Santé, Actiburo 1, Bâtiment A—100 Chemin de l'Aumône Vieille, 13400 Aubagne, France  
<sup>3</sup> Department of Obesity and Nutritional Sciences, Novo Nordisk Foundation, 2900 Hellerup, Denmark  
\* Correspondence: sbailly@chu-grenoble.fr

**Abstract:** Obstructive sleep apnea (OSA) is one of the most frequent chronic diseases, and comorbid obesity occurs in more than 60% of cases. Variations in body weight influence both OSA severity and OSA-related symptoms. We prospectively assessed the impact of a weight-loss program using the Berlin score to reflect OSA risk, and we also used the Epworth Sleepiness Scale (ESS) to assess daytime sleepiness. DietSleep was a prospective multicentric cohort study investigating OSA risk and daytime sleepiness before and after weight-loss intervention. One hundred and twenty-seven patients were included (initial OSA risk 36%), most of whom were women (85.8%) with a median body mass index (BMI) of 29.7 kg/m<sup>2</sup>, and the interquartile range was (27.6; 34). The diet-based weight-loss program induced a median decrease in BMI of 3.7 kg/m<sup>2</sup> (−5; −2.9) (body weight~12.1% (−16.0; −8.8)) over a period of 171 days (114; 269). Changes in anthropometric values were similar regarding OSA risk after adjusting for initial values. Berlin scores significantly improved from 3 (1; 5) to 1 (0; 2),  $p < 0.01$ ; the proportion of patients with a Berlin score  $\geq 2$  decreased from 36% to 7% after the intervention. The proportion of patients with ESS  $\geq 11$  decreased from 13% to 2%. These results confirm that a weight-loss program produces clinically relevant weight loss and a significant improvement in both OSA and subjective daytime sleepiness.

**Keywords:** weight loss; obstructive sleep apnea; sleepiness



**Citation:** Bailly, S.; Fabre, O.; Cals-Maurette, M.; Pantagis, L.; Terrail, R.; Legrand, R.; Astrup, A.; Pépin, J.-L. Impact of a Weight-Loss Rehabilitation Program on Sleep Apnea Risk and Subjective Sleepiness in Patients with Overweight/Obesity: The DietSleep Study. *J. Clin. Med.* **2022**, *11*, 6890. <https://doi.org/10.3390/jcm11236890>

Academic Editor: Andras Bikov

Received: 9 November 2022

Accepted: 20 November 2022

Published: 22 November 2022

**Publisher's Note:** MDPI stays neutral with regard to jurisdictional claims in published maps and institutional affiliations.



**Copyright:** © 2022 by the authors. Licensee MDPI, Basel, Switzerland. This article is an open access article distributed under the terms and conditions of the Creative Commons Attribution (CC BY) license (<https://creativecommons.org/licenses/by/4.0/>).

## 1. Introduction

While it is often underdiagnosed, obstructive sleep apnea (OSA) represents a highly prevalent chronic disease that [1] contributes to the progression and aggregation of cardiovascular and metabolic comorbidities [2–4]. A bidirectional relationship exists between body weight, obesity, and OSA [2,5]. The prevalence of OSA is up to 40% in obese adults, and the risk increases with body mass index (BMI) [5]. OSA also remains largely undiagnosed in this particular population [6,7].

Disturbed sleep habits, such as both shorter and longer sleep times, are known to be associated with overweight and obesity [8,9]. In a prospective cohort of moderately overweight men and women, increasing weight over time aggravated OSA severity [10]. More recently, it has been shown that weight loss is associated with specific changes at the pharyngeal level, with a reduction in fat proportion in upper-airway tissues contributing to a reduction in OSA severity [11].

Although the prevalence of overweight and obesity has increased worldwide [12], and is considered to be an epidemic, there are actionable risk factors that can be targeted to improve the severity of OSA. Continuous positive airway pressure (CPAP) is the first-line therapy for OSA, but treatment adherence remains an important issue. The rate of CPAP termination observed in a nationwide study was 47% in the 3 years following the

initiation of CPAP [13], and it was associated with a higher rate of cardiovascular events and mortality [14]. The effect of CPAP on cardiometabolic risk reduction shows a higher potential when associated with weight-loss-reduction programs [15–17].

Weight loss achieved by lifestyle interventions or bariatric surgery is associated with a decrease in OSA severity, and it improves both OSA-related symptoms and OSA patient-reported outcomes [18]. Alternatives to CPAP are therefore highly desirable, and non-CPAP therapies, including weight-loss management in overweight and obese OSA patients, are recommended by European and U.S. guidelines [18,19]. Accordingly, the American Thoracic Society recommends that sleep physicians regularly assess weight and include overweight and obese OSA patients in comprehensive lifestyle interventions that incorporate weight loss and physical activity [18].

However, an assessment of OSA severity is not routinely included in the baseline evaluation of patients with overweight or obesity who initiate weight-loss programs. Risk score questionnaires have been developed to assess the probability of suffering from OSA [20]. One of the most widely used tools is the Berlin questionnaire [21], which aims to identify patients at a high risk of OSA based on the burden of symptoms, including snoring severity and comorbidities [22,23].

The diet-based RNPC weight-loss rehabilitation program (for Rééducation Nutritionnelle et Psycho-Comportementale, i.e., Nutritional and Psycho-Behavioral Rehabilitation) has demonstrated an ability to achieve significant weight loss in large real-life cohorts [24,25]; however, it has never been implemented in relation to improvements in OSA risk or the impact of OSA-related symptoms.

The objective of this study was to prospectively investigate the impact of a weight-loss program on OSA risk and subjective daytime sleepiness, as measured by the Berlin score and the ESS, respectively, in patients without known OSA. The Berlin score was chosen due to its performance in the general population and because it is easy for dietitians to use as a screening tool compared to an objective sleep study.

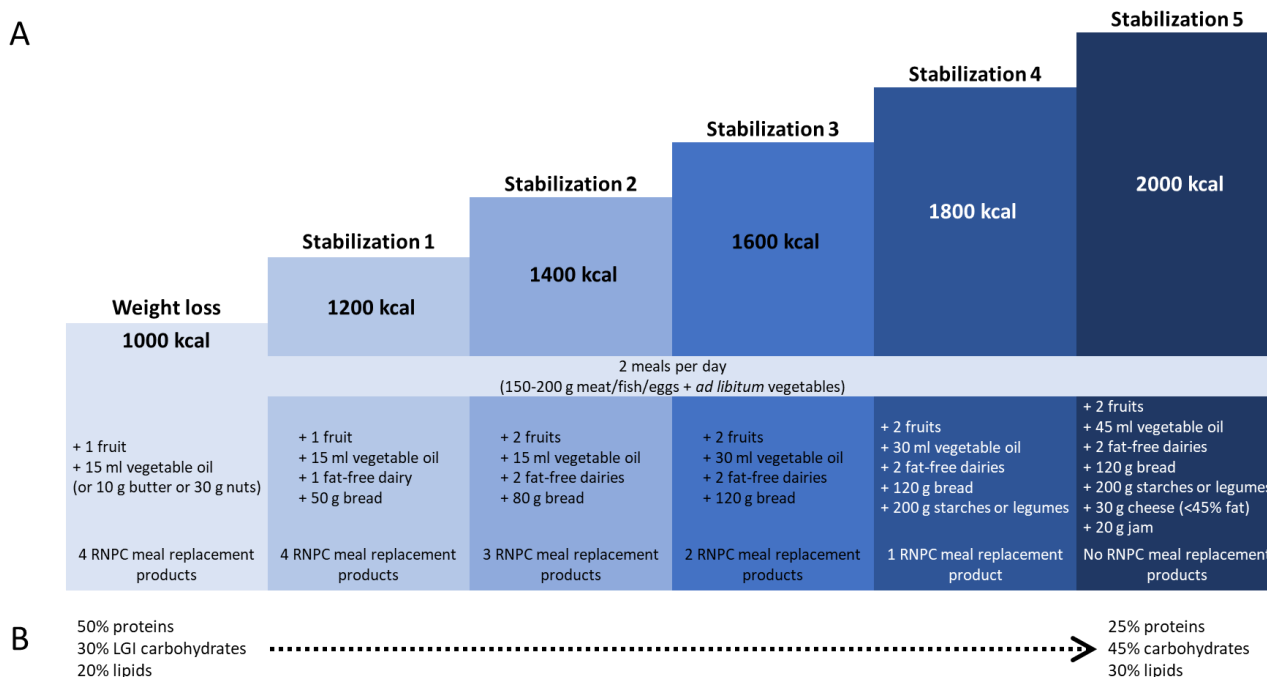
## 2. Materials and Methods

### 2.1. Study Design

The DietSleep study was a prospective multicenter cohort study conducted in six RNPC centers in France that are involved in a standardized national weight-loss program: the RNPC program. This program has been described extensively elsewhere [24–26]. Briefly, the RNPC program is a three-stage weight-loss program routinely performed in 79 centers across France. The RNPC diet is composed of two meals per day, including vegetables (*ad libitum*), one fruit (among a list of low-calorie and low-glycemic-index vegetables and fruits provided to the patients by the dietician), animal proteins (from meat, fish, eggs, or shellfish; 100–200 g/meal), and commercially available meal supplements (these do not replace a meal), as quantified through four units for men and three for women. Additionally, snacks are provided (biscuits, cereal bars, bread, crackers, soups, omelets, drinks, and desserts) that are ready to eat or easy to prepare, and the calorie content should not exceed 200 kcal/unit. The patients can eat whenever they want during the day (Figure 1).

Participants are referred to the RNPC program by their clinician, essentially general practitioners, to achieve the primary objective of weight loss. The first two stages of the program are: (1) a weight-loss phase, during which rapid weight loss is achieved (two to six months), and (2) a stabilization phase, during which energy intake is gradually increased with a duration depending on the weight-loss phase (i.e., 1 week per kg lost during the initial phase). The program is followed-up with a maintenance phase during which energy balance is achieved.

In the maintenance period, participants can return to the program whenever necessary. Face-to-face consultations with RNPC dietitians are scheduled once every two weeks during the first two stages (weight loss and stabilization), and they then become optional during the maintenance phase. Ethical approval for the study was issued by the CPP Sud Méditerranée III.



**Figure 1.** The RNPC program, from weight loss to balanced weight. **(A):** Example of a diet plan for a man with daily energy requirements estimated at 2000 kcal by Black formula. Energy intake and food consumed daily increase throughout the RNPC program, while the number of RNPC meal replacement products decreases. **(B):** Evolution of macronutrient distribution from weight loss to maintenance phase.

### 2.2. Study Objectives

The co-primary objectives of the study were to compare the evolution of OSA risk and subjective daytime sleepiness between the initiation and the end of the weight-loss phase using the RNPC weight-loss program.

The secondary objectives were to assess the relationship between the amplitude of weight-loss reduction and anthropometric measures of obesity, office blood pressure, and medication prescription evolution between the initiation and the end of the weight-loss phase using the RNPC program in specific subgroups either at risk or not at risk of OSA.

### 2.3. Study Population

Patient inclusions started in March 2019 and adhered to the following criteria: initial age  $\geq 18$  years, BMI  $\geq 25$  kg/m<sup>2</sup>, and starting an RNPC program. Due to the COVID-19 pandemic, a significant delay occurred until end of inclusions in March 2021, and withdrawal from the study happened during the pandemic period ( $n = 115$ ). Only age and sex were available to compare the included patients and patients lost to follow-up. Finally, for this study, only patients without diagnosed OSA at the start of the RNPC program were included.

### 2.4. Data Collection and Measures

The following data were systematically collected via an electronic medical record in each participating center: patient characteristics (age, gender), tobacco consumption, and anthropometric measures (weight, BMI, waist circumferences, percentages of fat mass, muscle mass, and body water). Anthropometric measures were collected during each in-patient follow-up visit with a calibrated bioelectrical impedance scale (BG42, Beurer, Ulm, Germany). Waist circumference was measured to the midpoint between the lower border of the rib cage and the iliac crest. For participants with abdominal adiposity with no visible natural waist, the measurement was taken approximately 2–5 cm above the navel. Main comorbidities and medications for diabetes and hypertension were also assem-

bled. Information about pre-existing diagnosis of sleep apnea syndrome and treatment by continuous positive airway pressure (CPAP) was available.

Specifically, for the DietSleep study, the following data were collected: (1) the Berlin score, obtained from a 9-item questionnaire aiming to assess the risk of OSA [27], which is defined by a score of 2 points or more. Each sub-score of the Berlin questionnaire was analyzed separately. The sensitivity (Se) and specificity (Sp) of the Berlin questionnaire were assessed to screen severe OSA in the general population and were: Se = 76.9 and Sp = 72.7 [23]. (2) Daytime sleepiness was measured using the ESS. The ESS was considered as both a continuous and a categorical variable, with a threshold at 11; patients with ESS  $\geq$  11 were considered to have excessive daytime sleepiness. (3) Blood pressure was measured three times at each visit using an OMRON M6 Comfort blood pressure monitor under the supervision of trained dietician. These measures were performed twice during the study: once at the inclusion time and once at the final time of the RNPC program.

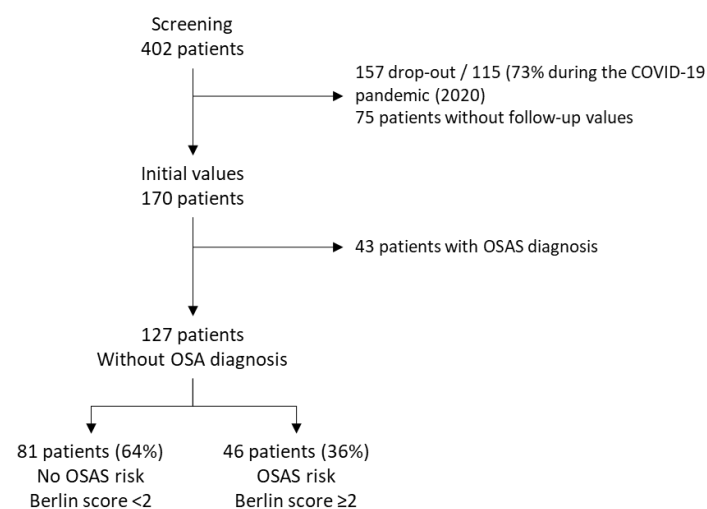
### 2.5. Statistical Analyses

Data were expressed as median and interquartile ranges for continuous values and as number and percent for qualitative values. Comparison between values at the start and the end of the treatment was performed using the Wilcoxon signed rank test for quantitative values and the McNemar test for qualitative values. Multivariable linear models were performed to assess the impact of the OSA-risk group on the evolution of anthropometric measures. Considered variables were age, gender, OSA-risk group, and the initial measure. Finally, a logistic regression model was performed to assess the probability of having high OSA risk after the weight-loss program, after adjusting for the main confounders (age, gender and waist circumference).

## 3. Results

### 3.1. Population

From 402 patients selected for the study, 127 patients were analyzed; 81 patients (64%) had no OSA risk (Berlin score  $<$  2) and 46 patients (36%) had a risk of OSA (Berlin score  $\geq$  2) at baseline (Figure 2). There were no significant differences in age and sex between the included patients and those lost to follow-up.



**Figure 2.** Flow chart of the study.

At baseline, patients were mainly female (N = 109, 85.8%), with a median age of 52 years (interquartile range: 44–61), and they were more prone to hypertension and diabetes (Table 1). Anthropometric measures were significantly different between groups, with higher initial values for weight, BMI, waist circumference, percentages of fat mass,

body water, and diastolic blood pressure in patients at risk of OSA compared to patients without an identified risk of OSA (Table 1).

**Table 1.** Description of baseline patient characteristics and anthropometric measures.

	All Population N = 127	Patients without Baseline OSA Risk N = 81 (55%)	Patients with Baseline OSA Risk N = 46 (45%)	p-Value
Age (years)	52 (44; 61)	53 (42; 62)	52 (45; 59)	0.29
Sex (female)	109 (85.8)	73 (90.1)	36 (78.3)	0.07
Tobacco consumption/yes	12 (9.4)	7 (8.6)	5 (10.9)	0.68
Arthrosis	29 (22.8)	15 (18.5)	14 (30.4)	0.12
Hypertension *	24 (18.9)	11 (13.6)	13 (28.3)	0.04
Diabetes *	5 (3.9)	1 (1.2)	4 (8.7)	0.04
Depression *	8 (6.3)	4 (4.9)	4 (8.7)	0.40
Anthropometric measures				
Weight (kg)	81.2 (74.2; 91.3)	78.8 (73.3; 84.4)	90.5 (79.7; 107)	<0.01
Height (cm)	165 (160; 170)	164 (161; 170)	165 (160; 171)	0.92
Body mass index (kg/m <sup>2</sup> )	29.7 (27.6; 34)	28.4 (27.3; 31.2)	33.2 (29.6; 36)	<0.01
Waist circumference (cm)	94 (89; 105)	92 (88; 100)	100 (91; 116)	<0.01
Fat mass (% of body weight)	41 (37.5; 43.4)	40.7 (37.1; 42.9)	42.4 (39.4; 45.2)	0.01
Muscle mass (% of body weight)	28.5 (26.4; 31.1)	28.9 (26.5; 31.1)	28.5 (27.2; 32)	0.50
Body water (% of body weight)	42.7 (40.4; 45)	43.3 (41.7; 45.9)	42 (40; 44.1)	0.01
Systolic blood pressure (mmHg) *	129.2 (117.8; 141.5)	126.7 (117.3; 136.3)	131 (121; 142.3)	0.12
Diastolic blood pressure (mmHg) *	85.3 (78; 93)	83.7 (77.3; 89.7)	86.2 (81.3; 93)	0.05

Data are in median (interquartile range) or number and percentage. \* Missing values for hypertension, diabetes, and depression: N = 74; for systolic and diastolic blood pressure N = 2.

### 3.2. Prevalence of Patients at Risk of OSA and Sleepy at Baseline

At the initiation of the program, the prevalence of patients with a high OSA risk was 36%. Regarding the different sub-scores of the Berlin questionnaire, patients with a Berlin score  $\geq 2$  had a higher prevalence of snoring (73.9%), sleepiness (43.5%), and comorbidities (91.3%) compared to patients without an identified baseline OSA risk.

Regarding the ESS, the score was higher for patients with OSA risk compared to patients without OSA risk: 7 (5; 10) vs. 6 (3; 8) ( $p < 0.01$ ). The prevalence of patients with excessive daytime sleepiness (ESS score  $\geq 11$ ) tended to be higher in the group of patients with baseline OSA risk (19.6%) compared to patients without baseline OSA risk (9.9%) ( $p = 0.12$ ) (Table 2).

**Table 2.** Initial measures of Berlin and Epworth Sleepiness Scale for all population.

	All Population with Baseline Values N = 127	Patients without Baseline OSA Risk N = 81 (55%)	Patients with Baseline OSA Risk N = 46 (45%)	p-Value
Berlin score				
Snoring N <sub>i</sub> (%)	51 (40.2)	17 (21)	34 (73.9)	
Sleepiness N <sub>i</sub> (%)	27 (21.3)	7 (8.6)	20 (43.5)	
Comorbidities N <sub>i</sub> (%)	66 (52)	24 (29.6)	42 (91.3)	
Total Berlin score	1 (1; 2)	1 (0; 1)	2 (2; 2)	
Epworth Sleepiness Scale	6 (4; 9)	6 (3; 8)	7 (5; 10)	<0.01
Excessive daytime sleepiness (ESS $\geq 11$ ) N <sub>i</sub> (%)	17 (13.4)	8 (9.9)	9 (19.6)	0.12

Data are in median (interquartile range) or number and percentage; ESS: Epworth Sleepiness Scale; OSA: Obstructive sleep apnea.



### 3.3. Changes in Anthropometric Measures, OSA Risk, and Excessive Daytime Sleepiness between Initiation and End of the Program according to Initial OSA Risk

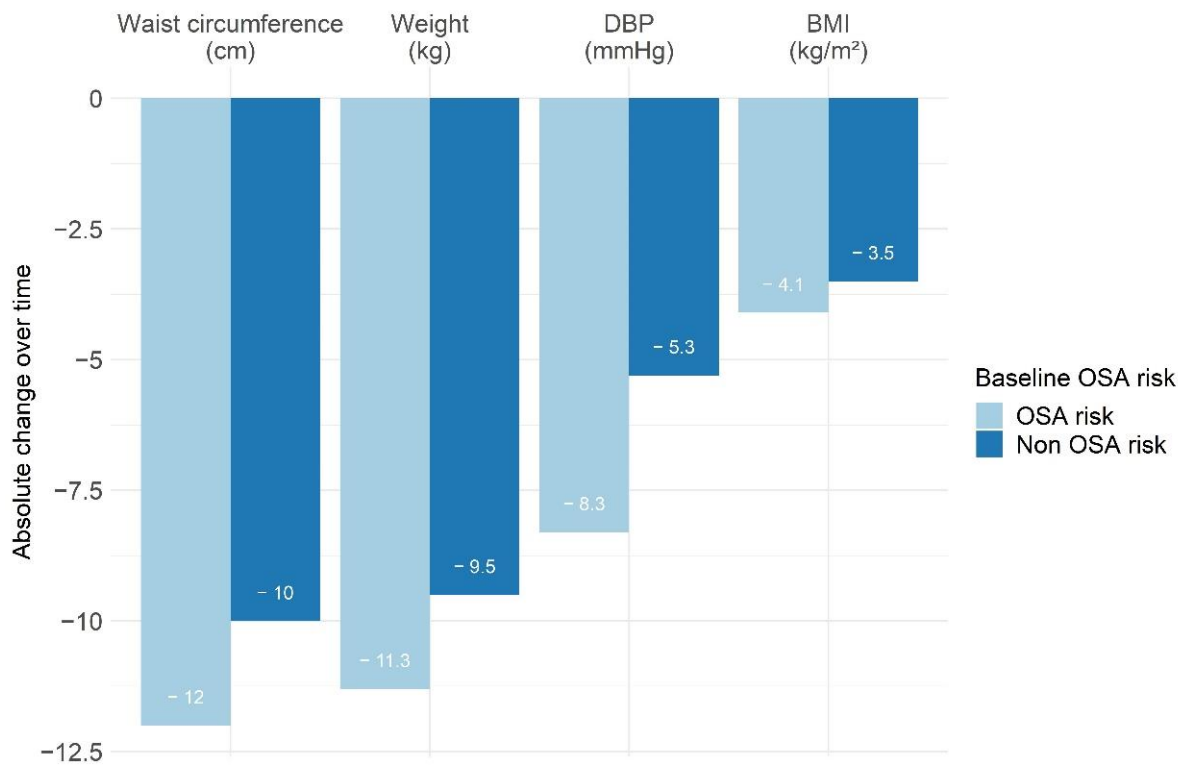
The median duration of the program was 5.6 months (3.8; 8.4). All anthropometric markers of fat distribution associated with high cardiometabolic risk decreased significantly during the program. Muscle mass percentage significantly increased in both groups. By comparing patients with or without baseline OSA risk, there was a significantly greater decrease in BMI and diastolic blood pressure, as well as a higher decrease in waist circumference ( $p = 0.06$ ) in the group with baseline OSA risk compared to the group without baseline OSA risk (Table 3, Figure 3). The median percent of weight loss was 12.2% (8.9; 16.1) for all patients. Although there was a significant difference in absolute weight loss, the percentage of weight loss was not significantly different for both groups ( $p = 0.37$ ). However, after multivariable adjustments to baseline values, these differences disappeared.

**Table 3.** Evolution of anthropometric measures, OSA risk, and ESS score over time during weight-loss program.

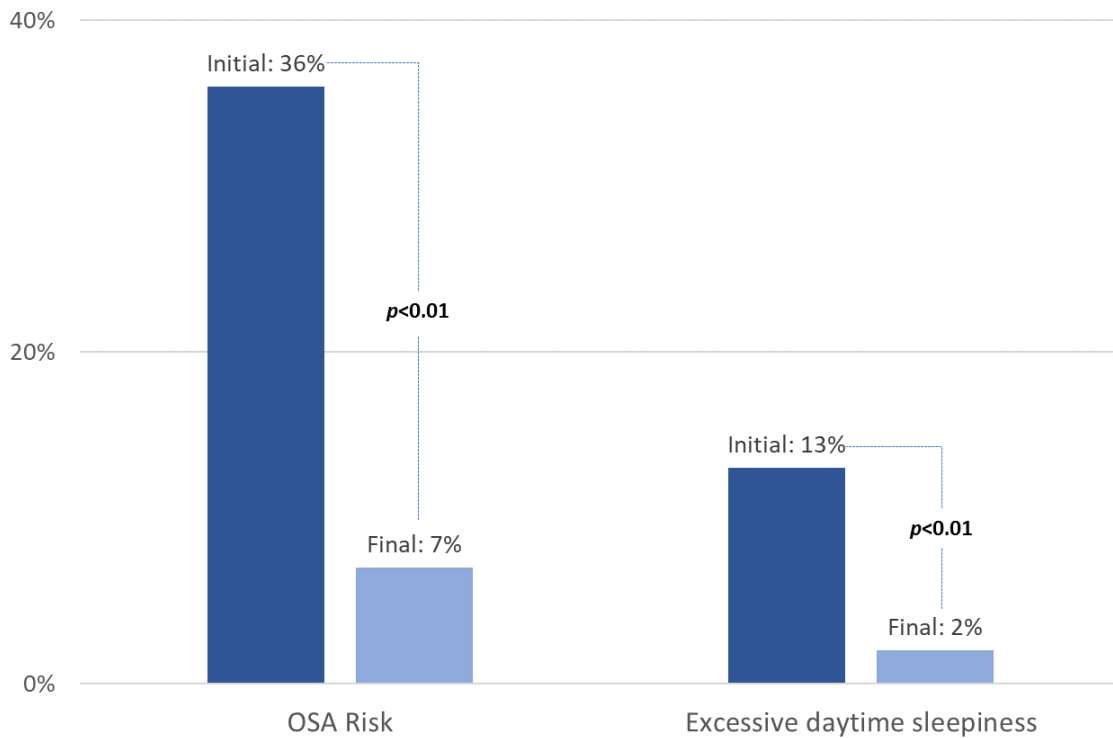
	Patients without Baseline OSA Risk N = 81 (64%)			Patients with Baseline OSA Risk N = 46 (36%)			p-Value <sup>§</sup>	Adjusted p-Value
	Initial Measure	Final Measure	Delta (Final-Initial)	Initial Measure	Final Measure	Delta (Final-Initial)		
Duration of follow-up (months)			5.1 (3.7; 8)			5.7 (3.9; 9.2)	0.50	
Delta anthropometric measures								
Weight (kg)	79 (73.4; 84.7)	69.6 (64.1; 75.6)	−9.5 (−13.2; −6.8) *	89.6 (77.5; 107)	74.6 (65.5; 94.4)	−11.3 (−15.3; −8.5) *	0.02	0.69
Weight (% change)			−12.3 (−15.5; −8.8)			−11.9 (−17.1; 10.0)	0.37	
Body mass index (kg/m <sup>2</sup> )	28.6 (27.3; 31.3)	25.3 (23.6; 27.6)	−3.5 (−4.8; −2.6) *	33.2 (29.5; 36)	28.8 (25.4; 31.1)	−4.1 (−5.7; −3.3) *	0.02	0.98
Waist circumference (cm)	92.5 (88; 100)	81 (77; 86)	−10 (−16; −8) *	100 (90; 116)	87 (79; 99)	−12 (−19; −10) *	0.06	0.23
Fat mass (%)	40.7 (37; 43)	36.4 (32.4; 39.2)	−4.3 (−5.6; −3) *	42.3 (39.4; 45.2)	37.4 (35.1; 42)	−3.7 (−5.4; −2.4) *	0.42	0.42
Muscle mass (%)	28.9 (26.5; 31.2)	30.7 (27.7; 32.2)	1.3 (0.9; 1.9) *	28.5 (27.2; 32)	29.8 (28.7; 32.6)	1.5 (0.8; 2.2) *	0.69	<0.01 *
Body water (%)	43.4 (41.7; 46)	46.4 (44.5; 49.6)	3.1 (2.2; 4.1) *	42.1 (40; 44.1)	45.8 (42.3; 47.4)	2.8 (2; 3.9) *	0.61	0.64
Systolic blood pressure	125.8 (117; 136)	118.3 (108; 125)	−10.3 (−17.3; −3) *	131 (121; 145)	119.7 (110; 128)	−13.3 (−22.7; −4.7) *	0.22	0.46
Diastolic blood pressure	83.5 (77; 89)	78.3 (71; 84)	−5.3 (−10.3; −0.3) *	86.3 (81; 93)	78 (73; 84)	−8.3 (−13; −1.7) *	0.05	0.18
Berlin score	1 (0; 1)	0 (0; 0)	0 (−1; 0) *	2 (2; 2)	1 (0; 1)	−1 (−2; −1) *	<0.01	
Epworth Sleepiness Scale	6 (3; 8)	4 (2; 5.5)	−1 (−3; 0) *	7 (5; 10)	4 (2; 6)	−2 (−6; −1) *	0.02	

Data are in median (interquartile range) or number and percentage. <sup>§</sup>: overall  $p$  value from Mann–Whitney test which compare delta values between groups (with or without baseline OSA risk).—adjusted  $p$  values are  $p$  values for Berlin score status at baseline adjusted on age, sex, and baseline values. \* Significant paired comparison of values before and after RNPC program®.

There was a higher decrease in ESS score in the group of patients with baseline OSA risk (median decrease: −2 (−6; −1)) compared to patients without baseline OSA risk (median decrease: −1 (−3; 0)),  $p = 0.02$ . Patients with baseline OSA risk showed a more significant decrease regarding the Berlin score. The proportion of patients with a positive Berlin score decreased from 36% at baseline to 7% at the end of the program ( $p < 0.01$ ), and the proportion of patients with excessive daytime sleepiness decreased from 13% at baseline to 2% at the end of the program ( $p < 0.01$ ) (Figure 4).



**Figure 3.** Non-adjusted significant absolute changes during the program in anthropometric markers of fat distribution associated with high cardiometabolic risk and blood pressure. DPB: diastolic blood pressure; BMI: body mass index. OSA: obstructive sleep apnea.



**Figure 4.** Changes in Berlin and ESS score proportions over time. OSA: obstructive sleep apnea. OSA risk: BERLIN score  $\geq 2$ —Excessive daytime sleepiness: Epworth sleepiness scale  $\geq 11$ .



### 3.4. Factor Associated with a Decrease in Berlin Score for Initial High Risk of OSA Patients

Regarding 47 patients who had a high risk of OSA at baseline, we utilized a logistic regression model to assess the determinants of a decrease in Berlin score. The reduction in waist circumference induced by waist low was significantly associated with a decrease in the Berlin score: for a one-centimeter decrease in waist circumference, the probability of normalizing the Berlin score at the end of the program increased by 19.8% (OR: 1.198 (1.021; 1.405), as adjusted for age and duration of the program.

## 4. Discussion

Our results showed a 36% prevalence rate of patients at high OSA risk at the initiation of the weight-loss program. Patients who had a high OSA risk exhibited more comorbidities and higher baseline values for anthropometric markers of fat distribution associated with a higher cardiometabolic risk and diastolic blood pressure. The subgroup initially at risk for OSA demonstrated a better response to the weight-loss program in terms of absolute values of improvement in adiposity indices compared to patients with non-OSA risk at baseline. However, the percentage of weight loss was similar in both groups; as reported by previous studies, the observed percentage of weight loss corresponded to a median decrease of 12.1% over time. By comparing these results to similar studies of OSA patients, such a weight loss is associated with a 50% decrease in OSA severity [5,28], which confirms the impact of a weight-loss program on the reduction in OSA risk in non-diagnosed OSA patients.

One originality of our cohort is the fact that we focused on overweight and obese patients rather than morbidly obese individuals, who are typically eligible for bariatric surgery [29]. Our results were consistent and comparable with previous studies [29,30]. After adjusting for baseline values, we found a similar evolution in anthropometric markers of fat distribution associated with high cardiometabolic risk in the specific subgroups with OSA risk versus non-OSA risk at baseline. Conversely, some previous studies have suggested that untreated OSA is associated with a lower decrease in ectopic fat or weight compared to patients without OSA [29,31,32]. A more systematic diagnosis of OSA and a combination of treatments are probably the most effective approaches. If an OSA recovery is demonstrated after weight-loss stabilization, then the primary therapy for OSA could be stopped.

Finally, in our study, patients included in the weight-loss program experienced a significant decrease in diastolic blood pressure. High diastolic blood pressure is typical in OSA, as it reflects a high level of sympathetic activity [33]. Our study demonstrated a considerable weight-loss effect on this marker of cardiovascular risk in the overall population, including the OSA-risk group.

The underdiagnosis of OSA in overweight and obese patients demonstrates that we need to develop alternative diagnosis pathways. Our results show that, for patients at OSA risk and without an OSA diagnosis, the Berlin score is a simple questionnaire with a high sensitivity but a lack of specificity, and it can be easily used by dietitians at the beginning of a weight-loss program. Moreover, a new home sleep test has also been developed, and it can be repeated over the course of weight loss; this tool should be disseminated in physicians' offices and obesity clinics in the future for the better management of OSA [34–36].

Currently, only weight loss has been proven to solve OSA in the long term [37], while other overweight/obesity-associated metabolic and cardiovascular comorbidities generally coexist with OSA. Chirinos et al. compared the effect of combined CPAP and weight loss to CPAP or weight loss alone, and they showed that only combined interventions and weight loss induced significant decreases in the level of the inflammatory marker CRP, insulin resistance, and triglycerides [17]. In their systematic analysis of randomized studies comparing therapeutic versus sham CPAP intervention, Jullian-Desayes et al. failed to demonstrate that CPAP improves metabolic markers, most notably glucose, lipid, and insulin resistance levels, inflammatory markers, or metabolic syndrome in OSA patients [38]. Therefore, it is unrealistic to expect metabolic and/or cardiovascular ameliorations with CPAP, and we cannot consider it a therapy for OSA resolution, but only a means of avoiding

its complications. There is an urgent need to systematically apply weight-loss strategies to patients at risk of OSA in order to prevent complications and improve metabolic and cardiovascular health. In our study, we consider only the effect of diet on weight loss without considering changes in physical activity. Physical exercise is important to take into account in a weight-loss program, as it has been shown to increase weight loss [18,39].

This study had several limitations. First, due to the COVID-19 pandemic, the sample size was more limited than expected, thus reducing the possibility of subgroups analyses. Regarding this point, we cannot rule out a possible selection bias due to the withdrawals. Second, the study used a questionnaire as a screening tool for OSA risk instead of polysomnography or polygraphy. Due to the limitations of the Berlin score—mainly patient misclassification—we cannot exclude that some patients suffering from mild-to-moderate OSA were classified in the non-OSA group, thus leading to an underestimation of OSA prevalence.

## 5. Conclusions

This study shows that there was a high prevalence of patients with OSA risk at the beginning of the RNPC weight-loss program. The results confirm that the program is associated with a significant decrease in OSA risk and excessive daytime sleepiness.

**Author Contributions:** Conceptualization, S.B., O.F., R.T., R.L., A.A. and J.-L.P.; methodology, S.B., O.F., R.T. and J.-L.P.; validation, O.F., R.L. and J.-L.P.; formal analysis, S.B. and M.C.-M.; investigation, R.T. and J.-L.P.; resources, O.F., L.P., R.L. and J.-L.P.; data curation, S.B., M.C.-M. and L.P.; writing—original draft preparation, S.B., O.F. and J.-L.P.; writing—review and editing, M.C.-M., L.P., R.T., R.L. and A.A.; visualization, S.B.; supervision, S.B., O.F., R.L. and J.-L.P.; project administration, O.F. and R.T.; funding acquisition, R.L. and J.-L.P. All authors have read and agreed to the published version of the manuscript.

**Funding:** The sponsor of the study was Grenoble Alpes University Hospital. J.-L.P., S.B. are supported by the French National Research Agency in the framework of the “Investissements d’avenir” program (ANR-15-IDEX-02) and the “e-health and integrated care and trajectories medicine and MIAI artificial intelligence” Chairs of excellence from the Grenoble Alpes University Foundation. This work has been partially supported by MIAI @ university Grenoble Alpes, (ANR-19-P3IA-0003).

**Institutional Review Board Statement:** Ethics: the study was approved by the CPP Sud Méditerranée under the approval number 2018-A02617-48.

**Informed Consent Statement:** A non-opposition form was obtained from all subjects involved in the study according to French regulations for observational research.

**Data Availability Statement:** The data presented in this study are available on request from the corresponding author. The data are not publicly available due to GRPD.

**Acknowledgments:** We would like to thank all the directors and dieticians of the RNPC centers for their contribution in collecting data from their patients and Amjad Uneisi (Grenoble Alpes University Hospital) for his continuous support for regulatory aspects of the project.

**Conflicts of Interest:** O.F. and L.P. are employed by the Groupe Ethique et Santé and R.L. is CEO of Groupe Ethique et Santé, which supports this study. A.A. is chairman of the International Scientific Board in RNPC since 2017, member of scientific advisory board for Green Leaf Medical, Sweden since 2021, and International Egg Consortium 2020, and Associate Editor of the *American Journal of Clinical Nutrition* since 2011.

## References

1. Benjafield, A.V.; Ayas, N.T.; Eastwood, P.R.; Heinzer, R.; Ip, M.S.M.; Morrell, M.J.; Nunez, C.M.; Patel, S.R.; Penzel, T.; Pepin, J.L.; et al. Estimation of the global prevalence and burden of obstructive sleep apnoea: A literature-based analysis. *Lancet Respir. Med.* **2019**, *7*, 687–698. [[CrossRef](#)]
2. Levy, P.; Kohler, M.; McNicholas, W.T.; Barbe, F.; McEvoy, R.D.; Somers, V.K.; Lavie, L.; Pepin, J.L. Obstructive sleep apnoea syndrome. *Nat. Rev. Dis. Primers* **2015**, *1*, 15015. [[CrossRef](#)]

3. Yeghiazarians, Y.; Jneid, H.; Tietjens, J.R.; Redline, S.; Brown, D.L.; El-Sherif, N.; Mehra, R.; Bozkurt, B.; Ndumele, C.E.; Somers, V.K. Obstructive Sleep Apnea and Cardiovascular Disease: A Scientific Statement From the American Heart Association. *Circulation* **2021**, *144*, e56–e67. [[CrossRef](#)]
4. Ryan, S.; Cummins, E.P.; Farre, R.; Gileles-Hillel, A.; Jun, J.C.; Oster, H.; Pepin, J.L.; Ray, D.W.; Reutrakul, S.; Sanchez-de-la-Torre, M.; et al. Understanding the pathophysiological mechanisms of cardiometabolic complications in obstructive sleep apnoea: Towards personalised treatment approaches. *Eur. Respir. J.* **2020**, *56*, 1902295. [[CrossRef](#)]
5. Peppard, P.E.; Young, T.; Palta, M.; Dempsey, J.; Skatrud, J. Longitudinal study of moderate weight change and sleep-disordered breathing. *JAMA* **2000**, *284*, 3015–3021. [[CrossRef](#)]
6. Wolk, R.; Shamsuzzaman, A.S.; Somers, V.K. Obesity, sleep apnea, and hypertension. *Hypertension* **2003**, *42*, 1067–1074. [[CrossRef](#)]
7. Romero-Corral, A.; Caples, S.M.; Lopez-Jimenez, F.; Somers, V.K. Interactions between obesity and obstructive sleep apnea: Implications for treatment. *Chest* **2010**, *137*, 711–719. [[CrossRef](#)]
8. Wu, Y.; Zhai, L.; Zhang, D. Sleep duration and obesity among adults: A meta-analysis of prospective studies. *Sleep Med.* **2014**, *15*, 1456–1462. [[CrossRef](#)] [[PubMed](#)]
9. Sperry, S.D.; Scully, I.D.; Gramzow, R.H.; Jorgensen, R.S. Sleep Duration and Waist Circumference in Adults: A Meta-Analysis. *Sleep* **2015**, *38*, 1269–1276. [[CrossRef](#)]
10. Newman, A.B.; Foster, G.; Givelber, R.; Nieto, F.J.; Redline, S.; Young, T. Progression and regression of sleep-disordered breathing with changes in weight: The Sleep Heart Health Study. *Arch. Intern. Med.* **2005**, *165*, 2408–2413. [[CrossRef](#)] [[PubMed](#)]
11. Wang, S.H.; Keenan, B.T.; Wiemken, A.; Zang, Y.; Staley, B.; Sarwer, D.B.; Torigian, D.A.; Williams, N.; Pack, A.I.; Schwab, R.J. Effect of Weight Loss on Upper Airway Anatomy and the Apnea-Hypopnea Index. The Importance of Tongue Fat. *Am. J. Respir. Crit. Care Med.* **2020**, *201*, 718–727. [[CrossRef](#)] [[PubMed](#)]
12. Bluher, M. Obesity: Global epidemiology and pathogenesis. *Nat. Rev. Endocrinol.* **2019**, *15*, 288–298. [[CrossRef](#)]
13. Pepin, J.L.; Bailly, S.; Rinder, P.; Adler, D.; Szeftel, D.; Malhotra, A.; Cistulli, P.A.; Benjafield, A.; Lavergne, F.; Josseran, A.; et al. CPAP Therapy Termination Rates by OSA Phenotype: A French Nationwide Database Analysis. *J. Clin. Med.* **2021**, *10*, 936. [[CrossRef](#)]
14. Pepin, J.L.; Bailly, S.; Rinder, P.; Adler, D.; Benjafield, A.V.; Lavergne, F.; Josseran, A.; Sinel-Boucher, P.; Tamisier, R.; Cistulli, P.A.; et al. Relationship Between CPAP Termination and All-Cause Mortality: A French Nationwide Database Analysis. *Chest* **2022**, *161*, 1657–1665. [[CrossRef](#)]
15. Jain, S.; Gurubhagavatula, I.; Townsend, R.; Kuna, S.T.; Teff, K.; Wadden, T.A.; Chittams, J.; Hanlon, A.L.; Maislin, G.; Saif, H.; et al. Effect of CPAP, Weight Loss, or CPAP Plus Weight Loss on Central Hemodynamics and Arterial Stiffness. *Hypertension* **2017**, *70*, 1283–1290. [[CrossRef](#)] [[PubMed](#)]
16. Alruwaily, A.; Alruwaili, H.; Garvey, J.; le Roux, C.W. Can Weight Loss Improve the Cardiovascular Outcomes of Patients with Obesity and Obstructive Sleep Apnea? *Hearts* **2022**, *3*, 54–65. [[CrossRef](#)]
17. Chirinos, J.A.; Gurubhagavatula, I.; Teff, K.; Rader, D.J.; Wadden, T.A.; Townsend, R.; Foster, G.D.; Maislin, G.; Saif, H.; Broderick, P.; et al. CPAP, weight loss, or both for obstructive sleep apnea. *N. Engl. J. Med.* **2014**, *370*, 2265–2275. [[CrossRef](#)]
18. Hudgel, D.W.; Patel, S.R.; Ahasic, A.M.; Bartlett, S.J.; Bessesen, D.H.; Coker, M.A.; Fiander, P.M.; Grunstein, R.R.; Gurubhagavatula, I.; Kapur, V.K.; et al. The Role of Weight Management in the Treatment of Adult Obstructive Sleep Apnea. An Official American Thoracic Society Clinical Practice Guideline. *Am. J. Respir. Crit. Care Med.* **2018**, *198*, e70–e87. [[CrossRef](#)]
19. Randerath, W.; Verbraecken, J.; de Raaff, C.A.L.; Hedner, J.; Herkenrath, S.; Hohenhorst, W.; Jakob, T.; Marrone, O.; Marklund, M.; McNicholas, W.T.; et al. European Respiratory Society guideline on non-CPAP therapies for obstructive sleep apnoea. *Eur. Respir. Rev.* **2021**, *30*, 210200. [[CrossRef](#)]
20. Amra, B.; Rahmati, B.; Soltaninejad, F.; Feizi, A. Screening Questionnaires for Obstructive Sleep Apnea: An Updated Systematic Review. *Oman Med. J.* **2018**, *33*, 184–192. [[CrossRef](#)]
21. Senaratna, C.V.; Perret, J.L.; Matheson, M.C.; Lodge, C.J.; Lowe, A.J.; Cassim, R.; Russell, M.A.; Burgess, J.A.; Hamilton, G.S.; Dharmage, S.C. Validity of the Berlin questionnaire in detecting obstructive sleep apnea: A systematic review and meta-analysis. *Sleep Med. Rev.* **2017**, *36*, 116–124. [[CrossRef](#)] [[PubMed](#)]
22. Ng, S.S.; Tam, W.; Chan, T.O.; To, K.W.; Ngai, J.; Chan, K.K.P.; Yip, W.H.; Lo, R.L.; Yiu, K.; Ko, F.W.; et al. Use of Berlin questionnaire in comparison to polysomnography and home sleep study in patients with obstructive sleep apnea. *Respir. Res.* **2019**, *20*, 40. [[CrossRef](#)]
23. Tan, A.; Yin, J.D.; Tan, L.W.; van Dam, R.M.; Cheung, Y.Y.; Lee, C.H. Using the Berlin Questionnaire to Predict Obstructive Sleep Apnea in the General Population. *J. Clin. Sleep Med.* **2017**, *13*, 427–432. [[CrossRef](#)]
24. Thorning, T.K.; Fabre, O.; Legrand, R.; Astrup, A.; Hjorth, M.F. Weight loss and weight loss maintenance efficacy of a novel weight loss program: The retrospective RNPC<sup>®</sup> cohort. *Obes. Med.* **2018**, *10*, 16–23. [[CrossRef](#)]
25. Bailly, S.; Fabre, O.; Legrand, R.; Pantagis, L.; Mendelson, M.; Terrail, R.; Tamisier, R.; Astrup, A.; Clement, K.; Pepin, J.L. The Impact of the COVID-19 Lockdown on Weight Loss and Body Composition in Subjects with Overweight and Obesity Participating in a Nationwide Weight-Loss Program: Impact of a Remote Consultation Follow-Up-The CO-RNPC Study. *Nutrients* **2021**, *13*, 2152. [[CrossRef](#)] [[PubMed](#)]
26. Truche, A.S.; Bailly, S.; Fabre, O.; Legrand, R.; Zaoui, P. A Specific High-Protein Weight Loss Program Does Not Impair Renal Function in Patients Who Are Overweight/Obese. *Nutrients* **2022**, *14*, 384. [[CrossRef](#)] [[PubMed](#)]

27. Netzer, N.C.; Stoohs, R.A.; Netzer, C.M.; Clark, K.; Strohl, K.P. Using the Berlin Questionnaire to identify patients at risk for the sleep apnea syndrome. *Ann. Intern. Med.* **1999**, *131*, 485–491. [[CrossRef](#)]
28. Carneiro-Barrera, A.; Amaro-Gahete, F.J.; Guillen-Riquelme, A.; Jurado-Fasoli, L.; Saez-Roca, G.; Martin-Carrasco, C.; Buela-Casal, G.; Ruiz, J.R. Effect of an Interdisciplinary Weight Loss and Lifestyle Intervention on Obstructive Sleep Apnea Severity: The INTERAPNEA Randomized Clinical Trial. *JAMA Netw. Open* **2022**, *5*, e228212. [[CrossRef](#)]
29. Kline, C.E.; Burke, L.E.; Sereika, S.M.; Imes, C.C.; Rockette-Wagner, B.; Mendez, D.D.; Strollo, P.J.; Zheng, Y.; Rathbun, S.L.; Chasens, E.R. Bidirectional Relationships Between Weight Change and Sleep Apnea in a Behavioral Weight Loss Intervention. *Mayo. Clin. Proc.* **2018**, *93*, 1290–1298. [[CrossRef](#)]
30. Janney, C.A.; Kilbourne, A.M.; Germain, A.; Lai, Z.; Hoerster, K.D.; Goodrich, D.E.; Klingaman, E.A.; Verchinina, L.; Richardson, C.R. The Influence of Sleep Disordered Breathing on Weight Loss in a National Weight Management Program. *Sleep* **2016**, *39*, 59–65. [[CrossRef](#)]
31. Borel, A.L.; Leblanc, X.; Almeras, N.; Tremblay, A.; Bergeron, J.; Poirier, P.; Despres, J.P.; Series, F. Sleep apnoea attenuates the effects of a lifestyle intervention programme in men with visceral obesity. *Thorax* **2012**, *67*, 735–741. [[CrossRef](#)] [[PubMed](#)]
32. Gaborit, B.; Jacquier, A.; Kober, F.; Abdesselam, I.; Cuisset, T.; Boullu-Ciocca, S.; Emungania, O.; Alessi, M.C.; Clement, K.; Bernard, M.; et al. Effects of bariatric surgery on cardiac ectopic fat: Lesser decrease in epicardial fat compared to visceral fat loss and no change in myocardial triglyceride content. *J. Am. Coll. Cardiol.* **2012**, *60*, 1381–1389. [[CrossRef](#)] [[PubMed](#)]
33. Baguet, J.P.; Hammer, L.; Levy, P.; Pierre, H.; Rossini, E.; Mouret, S.; Ormezzano, O.; Mallion, J.M.; Pepin, J.L. Night-time and diastolic hypertension are common and underestimated conditions in newly diagnosed apnoeic patients. *J. Hypertens.* **2005**, *23*, 521–527. [[CrossRef](#)] [[PubMed](#)]
34. Le-Dong, N.N.; Martinot, J.B.; Coumans, N.; Cuthbert, V.; Tamisier, R.; Bailly, S.; Pepin, J.L. Machine Learning-based Sleep Staging in Patients with Sleep Apnea Using a Single Mandibular Movement Signal. *Am. J. Respir. Crit. Care Med.* **2021**, *204*, 1227–1231. [[CrossRef](#)] [[PubMed](#)]
35. Pepin, J.L.; Letesson, C.; Le-Dong, N.N.; Dedave, A.; Denison, S.; Cuthbert, V.; Martinot, J.B.; Gozal, D. Assessment of Mandibular Movement Monitoring With Machine Learning Analysis for the Diagnosis of Obstructive Sleep Apnea. *JAMA Netw. Open* **2020**, *3*, e1919657. [[CrossRef](#)] [[PubMed](#)]
36. Verhaert, D.V.M.; Betz, K.; Gawalko, M.; Hermans, A.N.L.; Pluymaekers, N.; van der Velden, R.M.J.; Philippens, S.; Vorstermans, B.; Simons, S.O.; den Uijl, D.W.; et al. A VIRTUAL Sleep Apnoea management pathway For the work-up of Atrial fibrillation patients in a digital Remote Infrastructure: VIRTUAL-SAFARI. *Europace* **2022**, *24*, 565–575. [[CrossRef](#)] [[PubMed](#)]
37. Johansson, K.; Hemmingsson, E.; Harlid, R.; Trolle Lagerros, Y.; Granath, F.; Rossner, S.; Neovius, M. Longer term effects of very low energy diet on obstructive sleep apnoea in cohort derived from randomised controlled trial: Prospective observational follow-up study. *BMJ* **2011**, *342*, d3017. [[CrossRef](#)]
38. Jullian-Desayes, I.; Joyeux-Faure, M.; Tamisier, R.; Launois, S.; Borel, A.L.; Levy, P.; Pepin, J.L. Impact of obstructive sleep apnea treatment by continuous positive airway pressure on cardiometabolic biomarkers: A systematic review from sham CPAP randomized controlled trials. *Sleep Med. Rev.* **2015**, *21*, 23–38. [[CrossRef](#)]
39. Kaikkonen, K.M.; Korpelainen, R.; Vanhala, M.L.; Keinänen-Kiukaanniemi, S.M.; Korpelainen, J.T. Long-term Effects on Weight Loss and Maintenance by Intensive Start with Diet and Exercise. *Scand. J. Med. Sci. Sport.* **2022**, 1–11. [[CrossRef](#)]