



**HAL**  
open science

# From heterogeneous morphogenetic fields to homogeneous regions as a step towards understanding complex tissue dynamics

Satoshi Yamashita, Boris Guirao, François Graner

► **To cite this version:**

Satoshi Yamashita, Boris Guirao, François Graner. From heterogeneous morphogenetic fields to homogeneous regions as a step towards understanding complex tissue dynamics. *Development* (Cambridge, England), 2021, 148 (23), 10.1242/dev.199034 . hal-03875253v2

**HAL Id: hal-03875253**

**<https://hal.science/hal-03875253v2>**

Submitted on 28 Nov 2022

**HAL** is a multi-disciplinary open access archive for the deposit and dissemination of scientific research documents, whether they are published or not. The documents may come from teaching and research institutions in France or abroad, or from public or private research centers.

L'archive ouverte pluridisciplinaire **HAL**, est destinée au dépôt et à la diffusion de documents scientifiques de niveau recherche, publiés ou non, émanant des établissements d'enseignement et de recherche français ou étrangers, des laboratoires publics ou privés.

# From heterogeneous morphogenetic fields to homogeneous regions as a step towards understanding complex tissue dynamics

Satoshi Yamashita<sup>1,\*</sup>, Boris Guirao<sup>2</sup> and François Graner<sup>1,\*</sup>

## ABSTRACT

Within developing tissues, cell proliferation, cell motility and other cell behaviors vary spatially, and this variability gives a complexity to the morphogenesis. Recently, novel formalisms have been developed to quantify tissue deformation and underlying cellular processes. A major challenge for the study of morphogenesis now is to objectively define tissue sub-regions exhibiting different dynamics. Here, we propose a method to automatically divide a tissue into regions where the local deformation rate is homogeneous. This was achieved by several steps including image segmentation, clustering and region boundary smoothing. We illustrate the use of the pipeline using a large dataset obtained during the metamorphosis of the *Drosophila* pupal notum. We also adapt it to determine regions in which the time evolution of the local deformation rate is homogeneous. Finally, we generalize its use to find homogeneous regions for cellular processes such as cell division, cell rearrangement, or cell size and shape changes. We also illustrate it on wing blade morphogenesis. This pipeline will contribute substantially to the analysis of complex tissue shaping, and the biochemical and biomechanical regulations driving tissue morphogenesis.

**KEY WORDS:** Cellular process, Morphogenesis, Tissue segmentation, *Drosophila*

## INTRODUCTION

During tissue development, morphogenesis is accompanied by cellular processes such as cell division, cell rearrangement, cell size and shape changes, apical constriction and apoptosis. The cellular processes are coordinated together, yielding collective cell migration and local deformation of each tissue region, resulting in convergent extension or epithelial folding. Furthermore, the local deformations of different tissue regions are coordinated too, resulting in large-scale tissue morphogenesis. Coordinations between invaginated mesoderm and covering ectoderm (Rauzi et al., 2015; Perez-Mockus et al., 2017) and between invaginated midgut and elongated germ-band (Collinet et al., 2015; Lye et al., 2015; Dicko et al., 2017) of the *Drosophila* embryo, between contracting wing hinge and expanding wing blade in *Drosophila* pupa (Etournay et al., 2015; Ray et al., 2015), or between invaginated neural plate and covering epidermal ectoderm of

*Xenopus* embryo (Brodland et al., 2010), provide examples of how mechanical force generated in one region can drive large-scale deformation in adjacent regions. In these cases, the regions which behave differently are easily distinguished by specific gene expressions.

However, many tissues were found to be heterogeneous but without obvious boundary between such regions, leaving analysis limited to arbitrary regions drawn as a grid parallel to tissue axes, or regions expressing already known differentiation maker genes.

Measured tissue deformation rate showed a large heterogeneity (accompanied by a heterogeneity in cellular processes such as cell proliferation rate, cell division, cell rearrangement and change of cell shape) and smooth spatial variations across the tissue in *Drosophila* notum in a developing pupa (Bosveld et al., 2012; Guirao et al., 2015) (Fig. 1A,B), *Drosophila* wing blade (Etournay et al., 2015), blastopore lip of *Xenopus* gastrula (Feroze et al., 2015), chick gastrula (Rozbicki et al., 2015; Firmino et al., 2016), mouse palatal epithelia (Economou et al., 2013) and mouse limb bud ectoderm (Lau et al., 2015). Recent formalisms have enabled us to measure and link quantitatively cellular processes with tissue deformation (Blanchard et al., 2009; Guirao et al., 2015; Etournay et al., 2015; Merkel et al., 2017). These studies have shown that cellular quantities also vary smoothly across the tissue. In addition, the causal relationship between cellular processes and tissue deformation is not always trivial, making it difficult to identify regions that actively drive morphogenesis and that are passively deformed by adjacent regions.

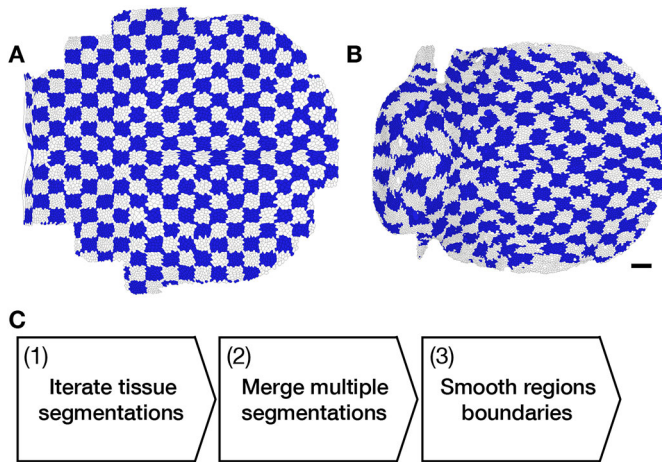
To study the spatial regulation of morphogenesis at a tissue scale, we developed a new multi-technique pipeline to divide a tissue into sub-regions based on quantitative measurements of static or dynamic properties of cells or tissues. Our tissue segmentation pipeline consists of two steps and an optional third step: first, a fast tissue segmentation attempted several times with random seeding, then merging these multiple tissue segmentations into a single one, then, if necessary, smoothing the resulting region boundaries (Fig. 1C). In contrast to other image segmenting methods like the watershed algorithm, this method is designed to accept any kind of quantity of biological interest, not only a scalar but also a vector, a tensor, and combination thereof. Here, we have applied it to the morphogenesis of *Drosophila* pupa dorsal thorax and wing blade. They were divided based on the tissue deformation rate or how the cellular processes contribute to the tissue deformation. The sub-regions obtained showed distinctive patterns of deformation and cellular processes with higher homogeneity than those along tissue axes. Interestingly, the tissue segmentations based on the local tissue deformation rate and on the cellular processes included some similar regions, suggesting that the cellular processes were regulated similarly inside the regions, therefore resulting in homogeneous tissue deformations inside those regions.

<sup>1</sup>Laboratoire Matière et Systèmes Complexes (CNRS UMR7057), Université de Paris-Diderot, F-75205 Paris Cedex 13, France. <sup>2</sup>Institut Curie, PSL Research University, CNRS UMR 3215, INSERM U934, F-75248 Paris Cedex 05, France.

\*Authors for correspondence (satoshiy83@gmail.com; francois.graner@univ-paris-diderot.fr)

 S.Y., 0000-0002-1271-4911

Handling Editor: Steve Wilson  
Received 26 November 2020; Accepted 25 October 2021



**Fig. 1. Morphogenesis of *Drosophila pupa notum* and overview of tissue segmentation pipeline.** (A,B) Heterogeneity of tissue morphogenesis. *Drosophila notum* at 12 h APF, with arbitrary regions drawn from a grid (A), and at 32 h APF showing the heterogeneous deformation of previous regions using cell tracking (B). Cell patches are shown with blue and white check pattern. (C) Pipeline of the tissue segmentation. (1) Iteration of fast tissue segmentation with random seeding, using region growing algorithm. (2) Merging multiple tissue segmentations of step 1 into a single objective tissue segmentation, using label propagation algorithm on a consensus matrix. (3) Smoothing region boundaries resulting from step 2, using cellular Potts model.

## RESULTS

### Development of automatic tissue segmentation algorithm Image segmentation by region growing algorithm

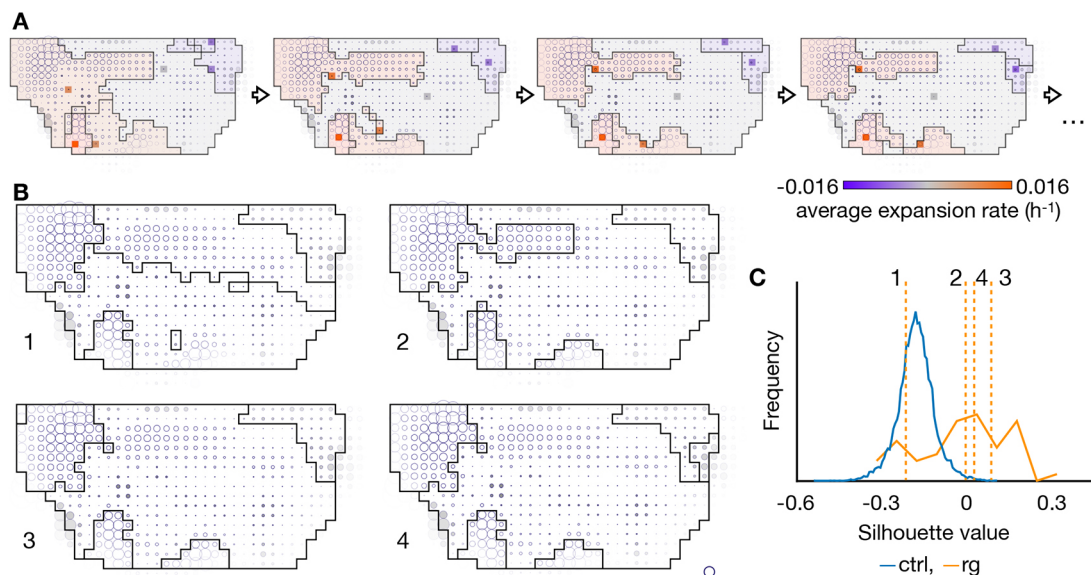
Finding distinctive and homogeneous regions inside the heterogeneous tissue is achieved by segmenting the geometrical space while keeping the points inside each region as similar as possible to each other in the property space. Here, we call ‘property space’ any morphogenesis quantification measured in the tissue,

whereas ‘geometrical space’ refers to the two-dimensional space of cell patch positions inside the tissue.

Given a set of objects, collecting similar objects to divide them into groups is generally a task of cluster analysis. However, the cell patches distribute both in the property space and geometrical space. On the assumption that expression patterns of genes responsible for morphogenesis make connected regions, and to study physical interactions between the regions, we aimed at getting connected regions. The initial tissue segmentation first defines a metric of similarity between cells, and then a tissue is divided into regions containing similar cells. A watershed algorithm is a widely used tool in general image segmentation and biology such as cell segmentation and segmentation of computed tomography data, but it requires the property space to be scalar and a clear boundary between regions. An alternative image segmentation tool, called region growing (Adams and Bischof, 1994; Ma et al., 2010) (Fig. 2A), was inspired by a study segmenting mouse heart based on cell polarity (Le Garrec et al., 2013).

To validate the algorithm, we first tested segmentation on a simple example, namely the change in cell patch areas from 12 to 32 h after puparium formation (APF) (Fig. 2B). The overall change in cell patch areas defines the total tissue growth, whereas spatially heterogeneous changes in cell patch areas result in local deformation, changes in tissue region proportions and overall tissue shape change. Technically speaking, the change in cell patch areas is a scalar field, defined as the trace of the tissue deformation rate tensor. The region growing succeeded in finding expanding regions in posterior, lateral posterior and lateral parts, and a shrinking region in the anterior part.

However, the results varied dependent on the initial seeds. In contrast to a segmentation of immunostained images, where a true segmentation is well defined, the morphogenetic properties vary continuously with space, making it difficult to determine and validate the resultant segmentations. The silhouette, a measurement



**Fig. 2. Tissue segmentation by region growing algorithm.** (A) Process of region growing algorithm. The number of points (six in the shown example) are chosen randomly as initial seeds of regions, and the regions are expanded by collecting points similar to the seeds from their neighbors. Once the field is segmented, the seeds are updated to region centroids in the geometrical space and means in the property space, and the expansion of the regions is performed again from the new seeds. Cell patches expansion/contraction rates are represented by size of white/gray circles. The seeds are shown by colored squares, where the color represents an expansion rate of the regions. The regions are colored lighter for visibility. This update of the seeds and the regions are iterated until it reaches a convergence. (B) Four example results of region growing. (C) Histogram of silhouette value: blue for control segmentations, orange for region growing. Dotted vertical orange lines show silhouette values of the four examples shown in B. For clarity, in this figure and others, frequency axis units are not included.

of region homogeneity (the silhouette of an object would be 1 if it was similar to all objects in the same cluster, and  $-1$  if it was more similar to objects in other clusters), differed from one segmentation to the other (Fig. 2C). To assess the significance of the homogeneity, we compared it with the average silhouette of randomly made control segmentations. Some of the region growing results had a low silhouette, even lower than that of half of the control segmentations (Fig. 2C), which means they were lacking any significance.

Because of the random initial seeding, we do not know which results should be compared with gene expression patterns or fed forward to a study of mechanical interactions between the regions. For practical applications, we need a single segmentation result for a given morphogenetic property.

#### Defining a single tissue segmentation using label propagation on a consensus matrix

To obtain a single tissue segmentation, we turned to consensus clusterings. In fact, as resultant segmentations of the region growing were dependent on randomly given initial values, we ran multiple trials and merged multiple segmentation results into a single one. Given multiple partitions, the consensus clustering returns the partition which is the most similar to all of the initial partitions. We tried several consensus clustering algorithms, and found the ‘label propagation on a consensus matrix’ (Lancichinetti and Fortunato, 2012; Raghavan et al., 2007) returning regions similar to the results of the region growing.

The label propagation on a consensus matrix converted multiple tissue segmentations into a weighted graph in which weight of an edge represented a frequency of segmentations in which incident vertices (points) belonged to the same region (Fig. 3A). Then labels

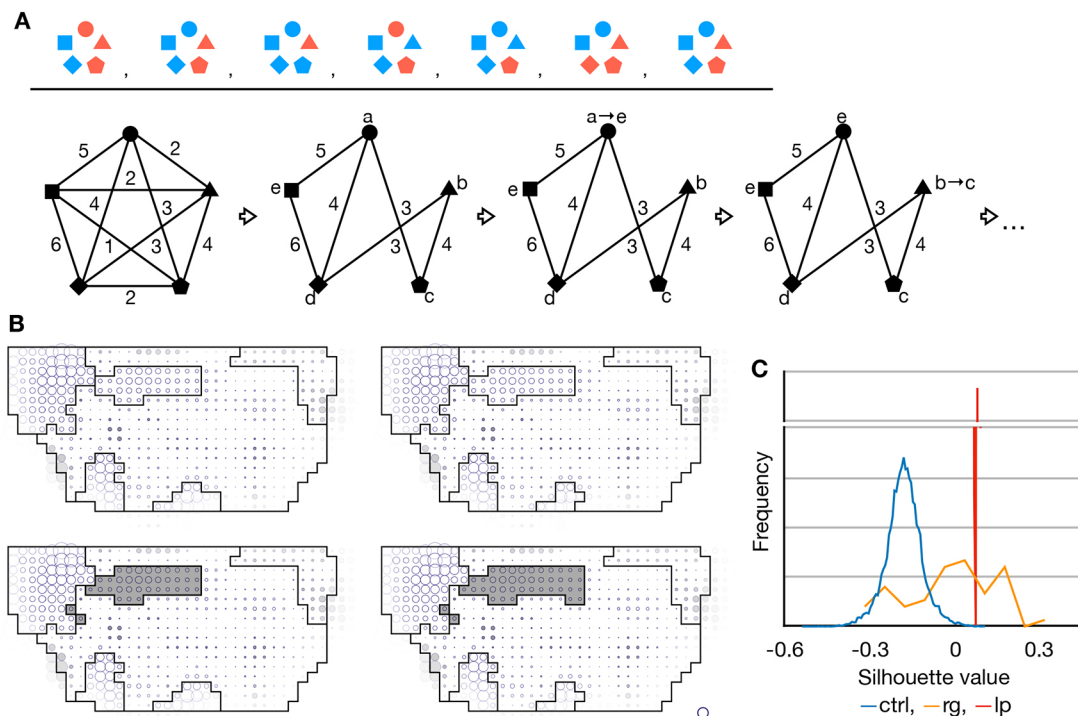
on the vertices were propagated according to the weight so that the same label was assigned to points which were frequently included in the same region among the given multiple region growing segmentations.

The label propagation returned results similar to the region growing segmentations (Figs 2B and 3B). Also, the label propagation results were more similar to each other than results of region growing, assessed with adjusted Rand indices (ARI, a measurement of similarity between two partitions (ARI of identical partitions would be 1). ARI were  $0.50 \pm 0.21$  (mean  $\pm$  s.d.) among the results of the region growing and  $0.97 \pm 0.02$  among the results of the label propagation. They showed similar average silhouette values, similar to median of those of region growing results, but smaller than the highest value of the region growing results (Fig. 3C). The average silhouette of the label propagation result was higher than those of 99.95% of the randomly made control segmentations.

However, a consensus clustering algorithm ignores original properties of objects in principle and divides the objects only based on how they were divided among given partitions, and thus it might return disconnected regions and a zigzag boundary between them. Some segmentations in Fig. 3B also included disconnected regions, marked in gray.

#### Smoothing of tissue segmentation results by cellular Potts model

For the cases of a complex boundary and disconnected points, we prepared an optional step to smooth the boundary and remove disconnected points when needed. To smooth the consensus region boundaries, we employed the cellular Potts model, which simulates dynamics of a cellular tissue by calculating energies of cells from their geometry, trying to decrease the total energy. In our application for boundary smoothing, the energy was lower when the region



**Fig. 3. Tissue segmentation by label propagation on a consensus matrix.** (A) Process of label propagation algorithm. Multiple clusterings (upper) are converted to a consensus matrix, which gives weights to a complete graph on the objects being clustered (lower). Edges with weights less than a given threshold are removed. All objects are initially assigned labels different to each other and then, one by one in random order, each label is updated to the most frequent one weighted by edges incident to the object until it reaches a convergence. (B) Four example results of label propagation on the same consensus matrix. (C) Histogram of silhouette value: blue for control segmentations, orange for region growing, red for label propagation. Scale circle:  $0.02 \text{ h}^{-1}$ .

boundary was shorter and the homogeneity was higher (Fig. 4A). Resultant regions were evaluated by homogeneity and circularity (Bosveld et al., 2016), which represents the smoothness of the boundary. Parameters for the cellular Potts model were screened so that the circularity was higher than a given value and the homogeneity was as high as possible. The result was not affected greatly by extending the duration of the simulation, and thus we stopped the simulation when it was appropriately smoothed.

This smoothed boundaries and removed disconnected cell patches (Fig. 4B,C) while keeping the average silhouette value higher than those of 99.5% of the randomly made control segmentations (Fig. 4D). As the cellular Potts model implementation includes the Metropolis update, i.e. choosing a pixel randomly and updating the pixel by probability according to a change of the energy, resultant smoothed segmentations varied among different trials even with the same parameters and initial segmentation. We therefore iterated the cellular Potts model smoothing 50 times and integrated its results using the label propagation algorithm again.

This gave a pipeline of the region growing, the label propagation and the optional cellular Potts model to divide a field of property (scalar, tensor, or any kind of value with metric) into regions. The resultant regions are homogeneous, where points in each region are more similar to each other than to points in other regions.

#### Verification of the method against simulated data

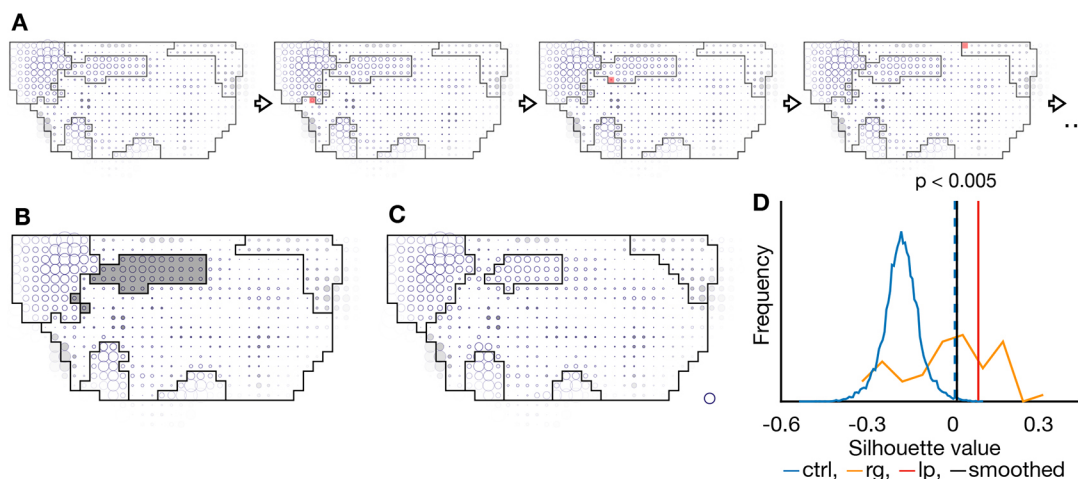
We tested whether our method can segment a simulated tissue using a normal cellular Potts model. We prepared a 2D tissue model in which two types of cells with different surface tensions were assembled (Fig. 5A). The tissue was geometrically compressed in the horizontal direction and extended in the vertical direction, so that the cells retained their area but they are vertically elongated (Fig. 5B). Because of the surface tension, the cells tried to minimize their perimeter, and thus they were rearranged and rounded (Fig. 5C; Movie 1). The tissue was split in a  $4 \times 7$  grid, and the deformation and cellular processes after the compression were measured in each cell patch. The measured deformation and cellular processes were averaged among 12 simulations. The cells were rearranged similarly between the two types of cells (Fig. 5D; Movie 1). However, when we tried the segmentation based on the cell rearrangement, the cells

were successfully distinguished (Fig. 5E). When the tissue was segmented into three regions, it included a small and disconnected region after the first label propagation and smoothing (Fig. 5F,G). The cell rearrangement rate was slightly higher among the cells with lower surface tension (Fig. 5H). In general, lower surface tension would allow larger fluctuation, and the larger fluctuation might have facilitated the faster cell rearrangement. The two regions obtained showed a significantly high homogeneity (Fig. 5I). With these results, we confirmed that our method could properly identify groups of cells with different mechanical properties based on their behavior.

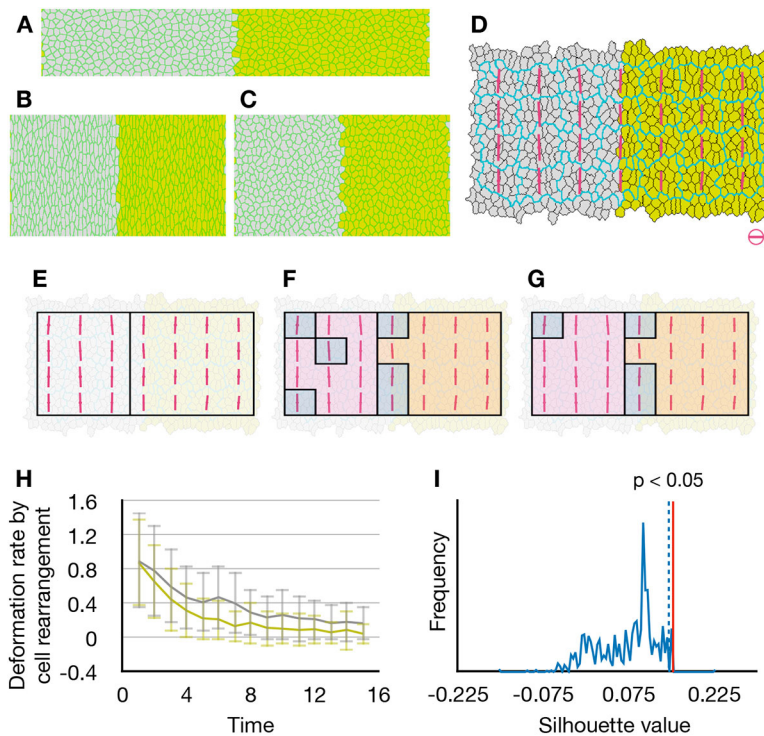
#### Tissue segmentation based on tissue morphogenesis

We now turn to property spaces better representing tissue morphogenesis. In Guirao et al. (2015), tissue deformation rate (**G**) and underlying cellular processes, cell division (**D**), cell rearrangement (**R**), cell shape change (**S**) and cell delamination (**A**) were quantified into tensors. The tensors were obtained from the change of texture averaged over 20 h from 12 h APF to 32 h APF or over 2 h at each time point. By comparing the tensors, for example, one can check whether cell divisions and cell rearrangements elongated tissue in the same direction or attenuated each other. In the same way, by comparing the tensors of deformation rates with a unit tensor which has the same direction of elongation as tissue deformation rate, one can estimate an amplitude of the tissue deformation rate and how much the cellular processes contribute to the tissue deformation in both terms of contraction/expansion (isotropic deformation) and narrowing/elongation (anisotropic deformation) (Guirao et al., 2015). They are scalar values and denoted by  $G_j$  for the tissue deformation rate,  $D_j$  for cell division,  $R_j$  for cell rearrangement,  $S_j$  for cell shape change and  $A_j$  for cell delamination. For the sake of clarity, we call the tissue deformation rate and the cellular processes averaged over the whole 20 h from 12 to 32 h APF ‘time-average’ tissue deformation rate and cellular processes.

The effective contributions averaged over the whole tissue showed dynamic time evolution (Fig. S1), with a large peak of cell division and cell shape change at around 16 h APF, a second small wave of cell division at around 22 h APF, and a gradual increase of cell shape change and cell rearrangement. The effective



**Fig. 4. Boundary smoothing by cellular Potts model.** (A) Process of cellular Potts model. A pixel is randomly chosen and changes its belonging region if it decreases boundary length and/or increases homogeneity (marked by red). (B) Result of label propagation with a disconnected region shown by gray color. (C) Result of boundary smoothing by cellular Potts model. (D) Histogram of silhouette value: blue for control segmentations, orange for region growing, red vertical line for label propagation, black vertical line for regions smoothed by cellular Potts model. Dotted blue line shows threshold for the highest 0.5% of the control segmentations. Scale circle:  $0.02 \text{ h}^{-1}$ .



**Fig. 5. Segmentation of simulated tissue.** (A) Initial configuration of the model tissue. The cells with lower surface tension were colored gray, and the cells with higher surface tension were colored yellow. Cell perimeters were colored green. (B,C) Tissue after the compression (B) and after the simulation (C). (D) Cell rearrangement in each cell patch after the compression. Pale blue line outlines the cell patches. Magenta bars represent direction and rate of assumptive tissue deformation caused by the cell rearrangements. Scale bar and circle indicate deformation rate:  $0.2 \text{ h}^{-1}$ . (E) Segmentation into two regions based on the cell rearrangements. It is a result of the first label propagation, but it did not need smoothing. (F,G) Segmentation into three regions based on the cell rearrangements, after the first label propagation (F) and the boundary smoothing (G). The regions were colored for visibility. (H) Plot of the assumptive deformation rate caused by the cell rearrangements. Eigenvalue of the tensor for the cell rearrangements represents a rate of tissue elongation by the cell rearrangement, and it is plotted against time after the compression. Gray line and yellow line show the average rate among the cells with lower surface tension and higher surface tension, respectively. Error bars represent s.d. (I) Histogram of average silhouette value of control segmentations divided into two regions. Red vertical line shows silhouette value of label propagation result in E. Dotted blue line shows threshold for the highest 5% of the control segmentations.

contributions also showed large variance across the tissue at each time point. Therefore, we included the time evolution in the property space. Assuming that there are two regions in a tissue where the tissue expands, the first region expands during 14–17 h APF and the second region expands during 25–28 h APF, resulting in similar size changes, then the two regions cannot be distinguished by the time-average expansion rate. To distinguish them, we compared a property at each time point and summed up its difference through the whole time. When two cell patches always behaved similarly, then the difference at each time point is small and so the total difference is small too, whereas cell patches with deformations occurring at different times are separated at each time point and thus the total difference gets large. In contrast with time-average, we call the sum of difference at each time point ‘time-evolution’.

#### Tissue segmentations based on tissue deformation rate and effective contributions of cellular processes

We first divided the tissue based on time-average and time-evolution of tissue deformation rate. The similarity was given by Euclidean distance of tensors. The notum was divided into anterior-middle-posterior and medial-lateral regions by both the time-average and time-evolution, whereas the middle regions were smaller and the middle lateral region extended medially in the segmentation based on time-evolution (Fig. 6A–D).

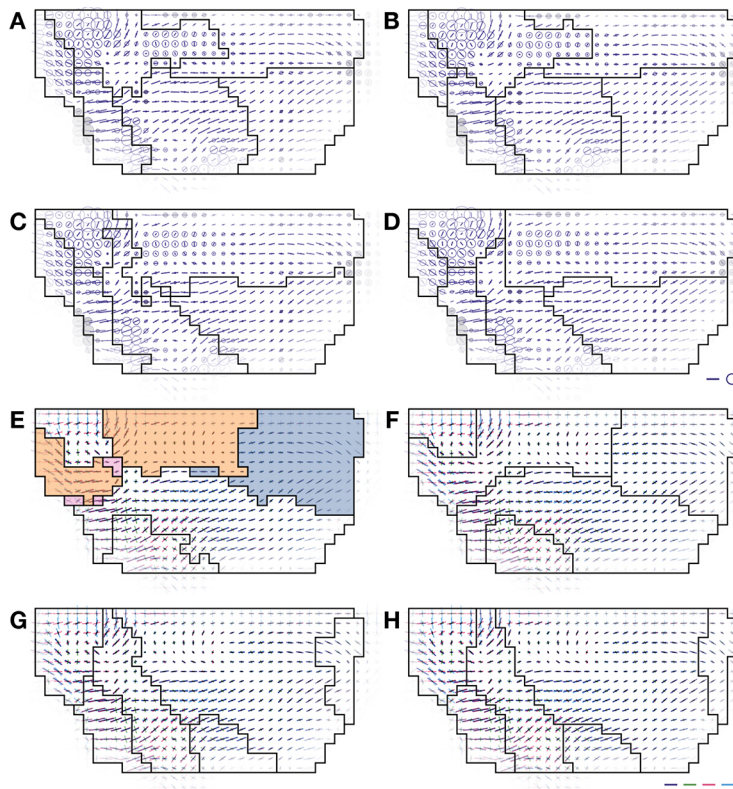
Next, we divided the tissue based on time-average and time-evolution of cellular processes. The amplitude of tissue deformation rate and effective contributions of cellular processes were combined in a vector, and their similarity was given by Euclidean distance of vector. In contrast to the segmentations based on the time-average and time-evolution of tissue deformation rate, the segmentations based on time-average and time-evolution of the cellular processes were dissimilar to each other (Fig. 6E–H). The segmentation based on time-evolution of cellular processes included a posterior region, a large anterior region, a neck-notum boundary region, lateral posterior region, a middle boundary region and a lateral region (Fig. 6H).

Although a change in the minimum circularity for the boundary smoothing did not affect the segmentation based on the time-average tissue deformation rate (Fig. S2A), the shape of the boundary changed dependent on the minimum circularity for the segmentations based on the other three property spaces (Fig. S2B–D). The cellular Potts model returns regions with circularity higher than the given minimum value if it is the most homogeneous segmentation.

We also tried dividing the tissue into various numbers of regions (Fig. S3). In many cases, an increase of the number of the regions resulted in subdividing the regions already obtained. In addition, when the number was too large, some results of the first label propagation included small regions similar to one observed in the segmentation of simulated data (Fig. 5F). Those small regions were absorbed into surrounding regions during the smoothing by cellular Potts model. Then the final label propagation tried to integrate regions smaller than the final segmentation, returning small and sometimes disconnected regions (Fig. S3, third column, from third to bottom rows; fourth column, sixth and bottom rows), again similar to the simulated data (Fig. 5G). Thus, the existence of small regions suggest that it is oversegmented.

#### Correspondence between segmentations based on cellular processes and tissue deformation rate

Both of the segmentations based on time-evolution of tissue deformation rate and effective contributions of cellular processes included the large anterior region, the middle boundary region, the lateral posterior region and the posterior region, although the anterior and posterior regions were divided into medial and lateral sub-regions in the segmentation based on the tissue deformation rate. Fig. 7A–D shows overlap between segmentation based on time-evolution of cellular processes (Fig. 6H) and the segmentations based on time-average tissue deformation rate, time-average cellular processes and time-evolution of cellular processes (Fig. 6B,D,F) or a conventional large grid parallel to tissue axes. The middle lateral and posterior lateral regions in



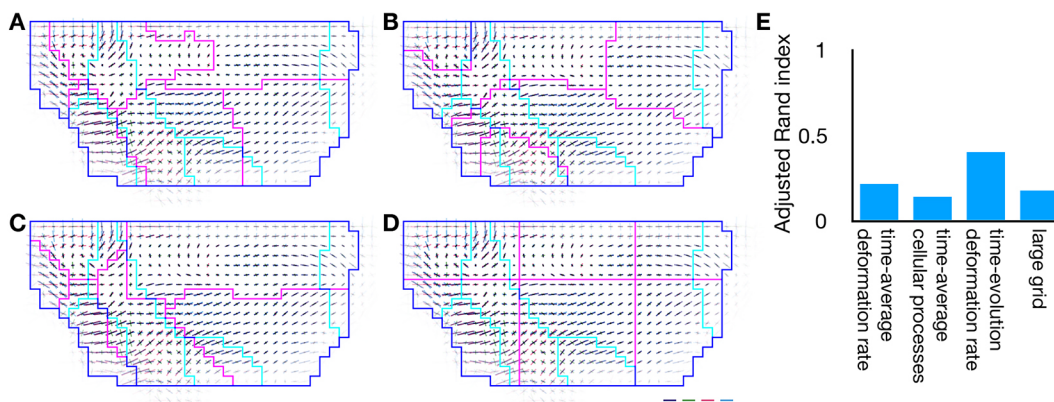
**Fig. 6. Segmentations based on tissue deformation and underlying cellular processes.** (A-H) Segmentations based on time-average tissue deformation rate (A,B), time-evolution of deformation rate (C,D), time-average effective contributions of cellular processes (E,F) and time-evolution of cellular processes (G,H). First column (A,C,E,G) shows results of the first label propagation and second column (B,D,F,H) shows results of boundary smoothing. For each cell patch, direction of elongation is represented by a bar, and the effective contributions of cellular processes are indicated by relative directions of deformation rate between the tissue and each cellular process. For quantification and representation of tissue deformation rate and cellular processes, see Materials and Methods and Guirao et al. (2015). Scale bar and circle:  $0.02 \text{ h}^{-1}$ .

the segmentation based on time-evolution of tissue deformation rate, and the middle boundary region and lateral posterior regions in the segmentation based on time-evolution of cellular processes, overlapped each other (Fig. 7C). We also evaluated the overlap between the segmentations by ARI (Fig. 7E). Despite the difference between the anterior sub-regions, the segmentations based on time-evolution of tissue deformation rate and cellular processes overlapped each other more than the others.

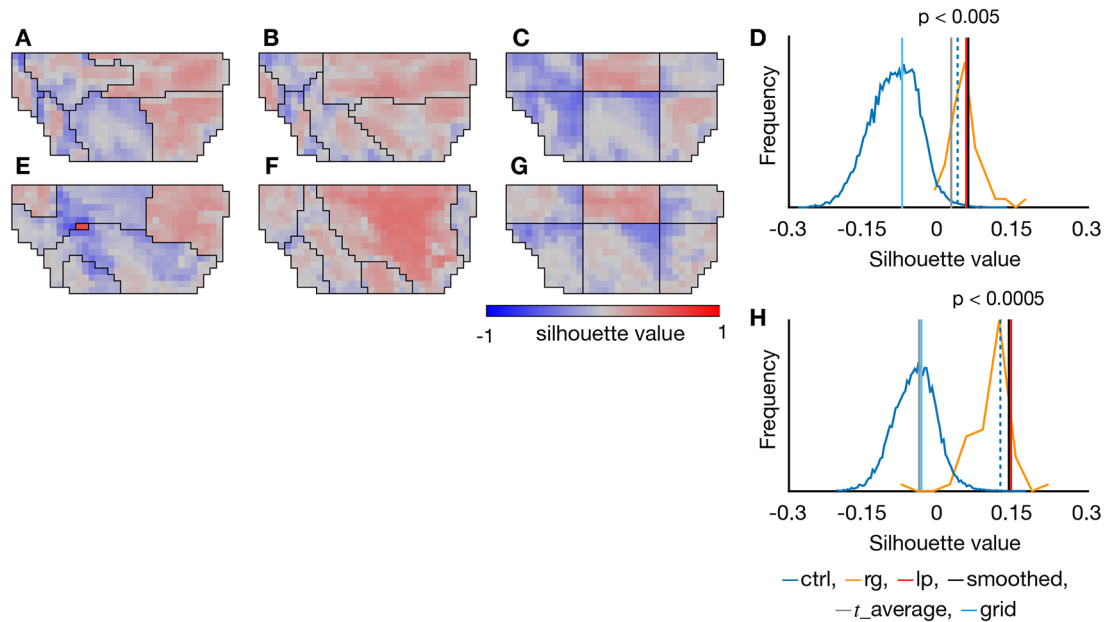
**Homogeneity of the obtained regions**

Next, we evaluated the homogeneity of the obtained regions. The time-evolution of tissue deformation rate was similar among cells inside regions of the segmentations based on time-average and time-evolution of tissue deformation rate, except the middle-lateral region

identified based on the time-average tissue deformation rate (Fig. 8A, B). On the other hand, the large grid segmentation showed large heterogeneity in the posterior regions (Fig. 8C). The average silhouette value of the segmentation based on the time-evolution of deformation rate was higher than that of 99.5% of the control segmentations (mean silhouette for label propagation, 0.0568; for smoothed regions, 0.0600; the maximum of the smallest 99.5% of control mean silhouettes, 0.0425) (Fig. 8D). The mean silhouette of the segmentation based on time-averaged tissue deformation rate was also higher than 95% of the control segmentations (mean silhouette for label propagation, 0.0336; for smoothed regions, 0.0260; the maximum of the smallest 95% of control mean silhouettes,  $-0.0098$ ). However, the mean silhouette of the conventional grid segmentation was close to the median of the control segmentations (mean silhouette,  $-0.0694$ ).



**Fig. 7. Correspondence between segmentations based on cellular processes and deformation rate.** (A-D) Overlays of segmentations, in which segmentation based on time-evolution of deformation rate is shown by cyan lines, whereas segmentations based on time-average deformation rate (A), time-average cellular processes (B), time-evolution of cellular processes (C) and large grid (D) are shown by magenta lines. (E) Adjusted Rand indices of A-D. Scale bar:  $0.02 \text{ h}^{-1}$ .



**Fig. 8. Homogeneity in the obtained regions.** (A–C) Heat map of silhouette value measured with time-evolution of tissue deformation rate in segmentations based on time-average deformation rate (A), time-evolution of deformation rate (B) and large grid (C). (D) Histogram of silhouette value: blue for control segmentations, orange for region growing. Red vertical line shows silhouette value of label propagation results. Black vertical line shows silhouette value of regions smoothed by cellular Potts model. Dotted blue line shows threshold for the highest 0.5% of the control segmentations. Gray and cyan vertical lines show silhouette value of segmentation based on time-averaged deformation rate and large grid, respectively. (E–G) Heat map of silhouette value measured with time-evolution of effective contributions of cellular processes in segmentations based on time-average cellular processes (E), time-evolution of cellular processes (F) and large grid (G). (H) Histogram of silhouette value: blue for control segmentations, orange for region growing. Red vertical line shows silhouette value of label propagation results. Black vertical line shows silhouette value of regions smoothed by cellular Potts model. Dotted blue line shows threshold for the highest 0.05% of the control segmentations. Gray and cyan vertical lines show silhouette value of segmentation based on time-averaged cellular processes and large grid, respectively.

Also, the time-evolution of cellular processes was homogeneous inside the regions of the segmentation based on time-evolution of cellular processes, but not in segmentation based on time-average of cellular processes nor in the grid (Fig. 8E–G). The mean silhouette value of segmentation based on time-evolution was higher than 99.995% of control segmentations (mean silhouette for label propagation, 0.147; for smoothed regions, 0.1448; the maximum of the smallest 99.995% of control mean silhouettes, 0.124), whereas that of segmentation based on time-average was smaller than 5% of control segmentations (mean silhouette for label propagation, 0.0125; for smoothed regions,  $-0.0385$ ; the maximum of the smallest 95% of control mean silhouettes: 0.0241) (Fig. 8H).

Our tissue segmentation is designed to divide a tissue into regions homogeneous in a given property space, and the homogeneity of either tissue deformation rate or cellular processes in the segmentations based on each property demonstrated that the pipeline worked (Fig. 8B,F). However, it does not ensure the homogeneity of the regions in other property spaces that are different from the property space on which our segmentation was performed. Fig. S4 shows heat maps of silhouette values measured in different property spaces. Even though the homogeneity in the regions differed among the different property spaces, the segmentations based on time-evolution of tissue deformation rate and cellular processes showed higher homogeneity than the others also in the property spaces of deformation rates owing to cell divisions, cell rearrangements and cell shape changes.

#### Effective contributions of cellular processes inside the regions

We projected the regions divided based on the time-evolution of cellular processes onto the actual cell map, and found that

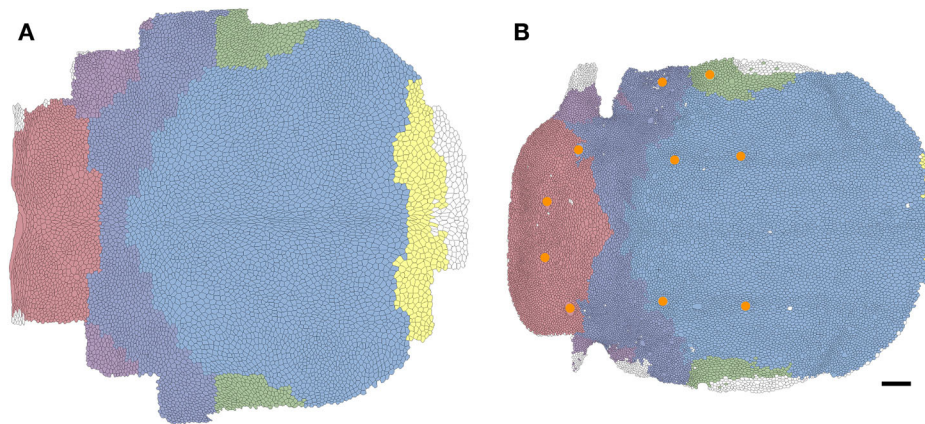
the anterior and posterior regions corresponded to scutum and scutellum, and the middle boundary and lateral posterior regions covered the scutum-scutellum boundary (Fig. 9). This result demonstrates that the obtained regions corresponded to the anatomical features, and cells were behaving differently between the anatomical regions. Note that the segmentations based on time-averaged tissue deformation rate or cellular processes did not match the anatomical features, indicating that the cells in the anatomical regions are actually regulated temporally.

Fig. 10 shows plots of the average effective contributions of cellular processes in each region of the segmentation based on time-evolution of cellular processes. The second peak of cell division was observed only in the posterior regions and the middle boundary region, consistent with previous studies providing maps of the number of cell divisions (Bosveld et al., 2012; Guirao et al., 2015); however, we also found a small first peak of cell division in the lateral posterior region. Plots of average cellular processes also differed from each other among regions in the segmentation based on tissue deformation rate, but this was less distinctive than in the large grid segmentation (Fig. S5). Distances between the plots in Fig. 10 were  $0.65 \pm 0.16$  and those for the segmentation based on tissue deformation rate were  $0.63 \pm 0.20$ , larger than those for the large grid segmentation ( $0.44 \pm 0.14$ ). This result demonstrates that cellular processes in the obtained segmentations were more distinctive than those in the conventional grid.

#### Application to the morphogenesis of the wing blade

To demonstrate the generality of our method in dividing a tissue, we performed the same segmentation and analysis in the *Drosophila* pupa wing blade. During 15–32 h APF, the wing blade is elongated





**Fig. 9. Projection of the segmentation onto the notum cells.** (A,B) The segmentations based on time-evolution of cellular processes were projected. The segmentation was projected onto the notum cells at 12 h (A) and 32 h APF (B), where regions were indicated by colors. The regions corresponded to scutum (pale blue and green), scutellum (red), scutum-scutellum boundary (dark blue and purple) and invaginated notum-neck boundary (yellow). The anatomical regions were identified according to positions of macrochaetae (orange circles in B). Scale bar: 50  $\mu$ m.

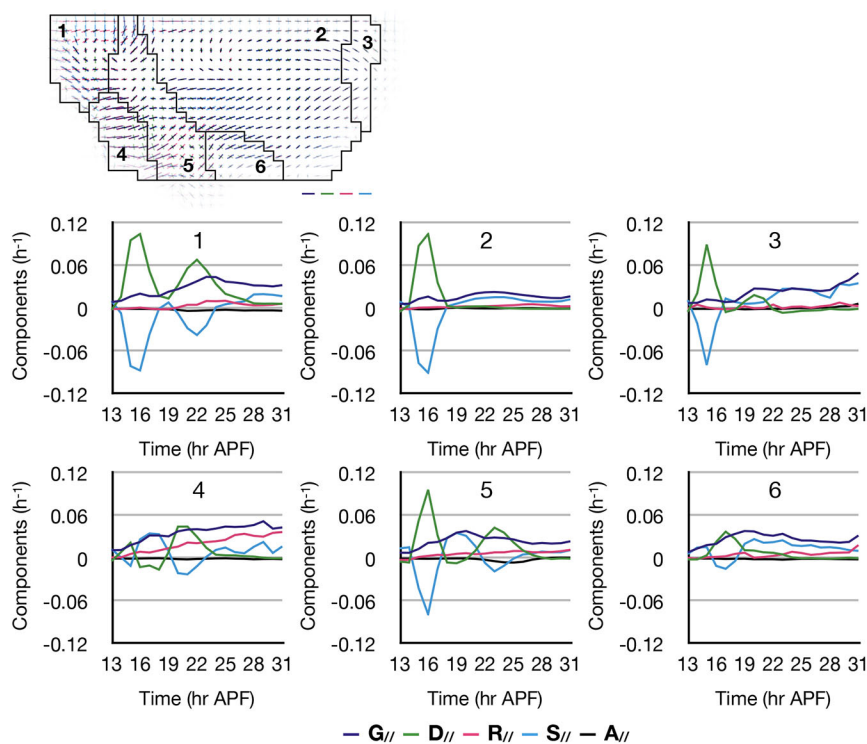
in the proximal-distal direction by a contracting wing hinge connected to the wing blade proximal side, whereas its distal side is anchored to the cuticle via Dumpy (Etournay et al., 2015; Ray et al., 2015). The wing hinge contraction also narrows it in the anterior-posterior direction and induces shear strain in wing blade proximal anterior and posterior regions (Fig. 11A,B). We performed tissue segmentation for the wing blade based on time-evolution of tissue deformation rate (Fig. 11C) and cellular processes (Fig. 11E), which divided it into four regions. In both cases, the wing blade was divided into anterior, middle, posterior and distal regions. All regions showed positive silhouette values (Fig. 11D,F), and their averages were significantly higher than the average silhouette values of control segmentations (Fig. 11G,H). Like the notum, dividing the wing blade into a larger number of regions also subdivided already obtained regions (Fig. S3). Plots of the effective contributions of cellular processes also showed distinctive patterns between the regions: the cell division showed a small contribution in the anterior region, the cell rearrangements dominated the tissue deformation around 26 h APF in the anterior and posterior regions, and the cell

shape changes showed two peaks around 17 and 22 h APF in the distal region (Fig. 11I). Projection of the four regions onto the cells showed a difference between the regions and interveins – the posterior region roughly corresponded to the proximal posterior intervein and the boundary between the anterior and distal regions corresponded to the L3 vein (Fig. S6).

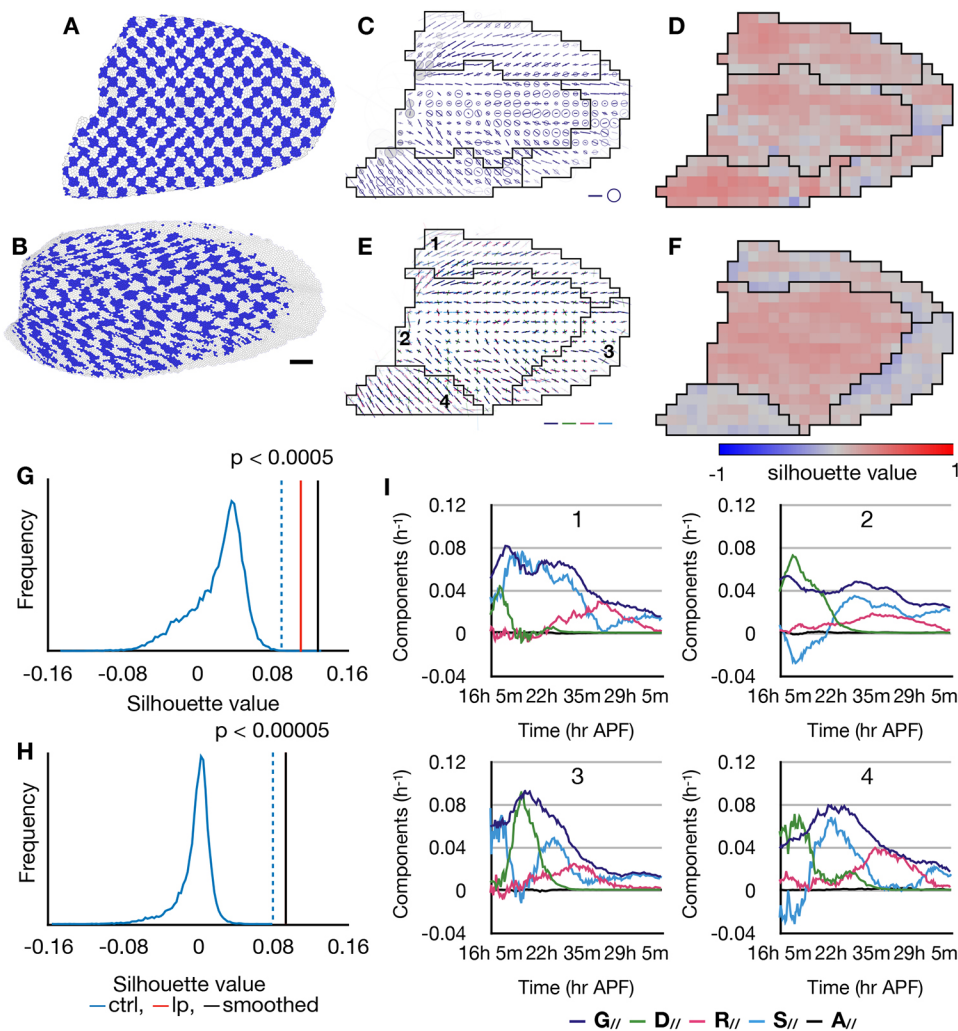
## DISCUSSION

This study demonstrates that the pipeline of the region growing, the label propagation on the consensus matrix and the boundary smoothing by cellular Potts model could divide a deforming heterogeneous tissue into homogeneous regions based on any prescribed quantity. Using this segmentation method, we divided the developing dorsal thorax and wing of *Drosophila* pupa based on their morphogenesis, and found regions with a distinctive tissue deformation rate and underlying cellular processes.

The tissue segmentation based on morphogenesis differs from conventional image segmentation and cell segmentation algorithms in terms of quantity and supervision. Marking a human in a picture,



**Fig. 10. Effective contributions of cellular processes inside the regions.** Plots show the time-evolution of effective contributions of cellular processes averaged in each region. Numbers on the plots indicate the regions (see top panel). Scale bar: 0.02  $h^{-1}$ .



**Fig. 11. Segmentation of *Drosophila* wing blade into four regions.** (A,B) Deformation of a wing blade from 15 h (A) to 32 h APF (B). Scale bar: 50  $\mu\text{m}$ . Same representation as Fig. 1A,B. Cell patches are shown with blue and white check pattern. (C,D) Segmentation based on time-evolution of tissue deformation rate (C) and its heat map of silhouette value (D). Scale bars: 0.04  $\text{h}^{-1}$  (E, F) Segmentation based on time-evolution of cellular processes (E) and its heat map of silhouette value (F). (G,H) Histogram of average silhouette value of control segmentations for the property spaces of tissue deformation rate (G) and cellular processes (H). Red vertical line shows average silhouette values of label propagation results. Black vertical lines show average silhouette values of smoothed regions. Dotted blue lines show threshold for the highest 0.05% (G) and 0.005% (H) of the control segmentations. (I) Plots of effective contributions of cellular processes averaged in each region of 1-4 in D. Scale bar: 50  $\mu\text{m}$  in B. Scale bar and circle in C and D: 0.04  $\text{h}^{-1}$ .

an organ in a histological image or dividing cells in a microscopic image had been done manually, and thus results of the watershed algorithm or the artificial neural network could be supervised and corrected with the manual segmentations. On the other hand, the segmentation based on morphogenesis is hardly ever done manually for several reasons. First, the morphogenesis was quantified as multiple tensor fields with time evolution, and thus it is hard to visualize them in a 2D image for manual segmentation. Second, it is not easy to evaluate whether a given region actually corresponds to genetical/mechanical regulation of morphogenesis. Therefore we looked for a method which divides a tissue based on any prescribed quantity and returns regions with smooth boundaries. Region growing is a conventional and simple method of image segmentation, and only requires a property space to be metric. The varying results of the region growing were given to the label propagation and cellular Potts model to produce a single tissue segmentation, and the result was evaluated by region homogeneity boundary smoothness.

The notum segmentations based on time-evolution of tissue deformation rate and effective contributions of cellular processes returned similar regions corresponding to the scutum, scutellum and the boundary between them. Using the tissue deformation rate, the scutum and scutellum regions were divided into medial and lateral sub-regions. As the vector of effective contributions ignores the direction of deformation, the two sub-regions could be interpreted as regions of similar underlying cellular processes but deforming in

different directions. However, the middle boundary region and the lateral region given by the cellular processes both overlapped with the middle boundary region given by the tissue deformation rate, and could be interpreted as regions with different cellular processes but of similar tissue deformations. The wing blade was divided into anterior, middle, posterior and distal regions based on both the tissue deformation rate and cellular processes, but the regions did not match the wing veins pattern.

Silhouette analysis showed that the segmentations based on time-evolution of deformation rate and cellular processes included regions homogeneous in various property spaces, whereas the conventional grid segmentation included heterogeneous regions. This method has some limitations. It cannot segment a small region; but such region might disappear during the boundary smoothing, resulting in disconnected regions in a final segmentation. Also, it is hard to determine the number of regions. We only know that a tissue might be oversegmented when it includes the small region. In a practical application, the tissue shall be segmented into various numbers of regions with various minimum circularities, and one of them can be chosen by comparing it to gene expression patterns, analyzing cell behaviors inside each region or other characteristics of interest.

In conclusion, we built a method to divide a tissue based on any prescribed property space. This allows the study of spatial regulation of various processes, where the property space should be chosen for the process of interest. For example, to study spatial regulation of

cell division orientation, the property space may be prepared from, instead of the local deformation rate and cellular processes, the tensor field of cell division and known regulating factors such as cell shape, localization of planar cell polarity proteins and tension on cell-cell interface, and then resultant regions can be compared with gene expression patterns. Also, this method is not dependent on how the morphogenesis was quantified, and one can include rotational movement by anti-symmetric strain rate tensors, or 3D deformation by using voxels instead of pixels.

## MATERIALS AND METHODS

### Quantification tools

This section describes in detail the quantification tools. Morphogenesis data result from the quantification of local tissue deformation rate and underlying cellular processes as described in Guirao et al. (2015). The similarity between two tensors is quantified by the standard Euclidean metric. The homogeneity of a quantity within a given region, i.e. the similarity between measurements of this quantity within a region, is measured by silhouette, a standard tool of cluster analysis. For a measurement of similarity between tissue segmentations, we use the Rand index, which indicates how well two data clusterings agree.

### Quantification of tissue deformation and cellular processes

Quantification of local tissue deformation and underlying cellular processes was performed as previously described (Guirao et al., 2015). Briefly, *Drosophila* nota expressing GFP-tagged E-cadherin were imaged. The notum movies were split in a grid (with patches about 20  $\mu\text{m}$  wide) at the first frame (Fig. 1C), 12 h after pupa formation (APF). The local deformation rate and the cellular processes were measured in each cell patch through the development, as described below.

Epithelial cell contours were detected automatically using a watershed algorithm, cells were tracked, adjacencies between cells were listed and relative positions of adjacent cell centers were recorded. The tissue deformation rate, denoted by the symmetric tensor  $\mathbf{G}$ , was obtained from changes of relative positions between neighbor cells over 20 h from 12 h APF to 32 h APF, or over 2 h at each time point when recording the time evolution. The tissue deformation rate  $\mathbf{G}$  was then decomposed into cell shape change  $\mathbf{S}$  and deformation accompanied by change of cell adjacency, which was further divided into cell division  $\mathbf{D}$ , cell rearrangement  $\mathbf{R}$  and cell delamination  $\mathbf{A}$ , which are symmetric tensors too.

In a collection of cells in which the total deformation is driven completely by the four fundamental cellular processes, the tensors are in a balance equation,

$$\mathbf{G} = \mathbf{D} + \mathbf{R} + \mathbf{S} + \mathbf{A}. \quad (1)$$

The scalar product of two tensors  $\mathbf{Q}$  and  $\mathbf{Q}'$  in dimension  $d$  is defined as:

$$\mathbf{Q} \cdot \mathbf{Q}' = \frac{1}{d} \text{Tr}(\mathbf{Q}\mathbf{Q}'^T), \quad (2)$$

and the unitary tensor  $\mathbf{u}_G$  that is aligned with  $\mathbf{G}$  is given by

$$\mathbf{u}_G = \frac{\mathbf{G}}{(\mathbf{G} \cdot \mathbf{G})^{1/2}}. \quad (3)$$

As the scalar product (Eqn 2) is a bilinear operation, multiplying  $\mathbf{u}_G$  by a tensor, the operation  $\mathbf{u}_G : \mathbf{Q} \rightarrow \mathbf{Q}_{//}$  retains the balance between the tissue deformation rate and the cellular processes in Eqn 1 while converting them to scalar magnitudes:

$$\begin{aligned} \mathbf{G}_{//} &= \mathbf{G} \cdot \mathbf{u}_G \\ &= (\mathbf{D} + \mathbf{R} + \mathbf{S} + \mathbf{A}) \cdot \mathbf{u}_G \\ &= \mathbf{D} \cdot \mathbf{u}_G + \mathbf{R} \cdot \mathbf{u}_G + \mathbf{S} \cdot \mathbf{u}_G + \mathbf{A} \cdot \mathbf{u}_G \\ &= \mathbf{D}_{//} + \mathbf{R}_{//} + \mathbf{S}_{//} + \mathbf{A}_{//}. \end{aligned} \quad (4)$$

The scalar  $\mathbf{G}_{//}$  represents the local magnitude of tissue morphogenesis, and  $\mathbf{D}_{//}$ ,  $\mathbf{R}_{//}$ ,  $\mathbf{S}_{//}$ , and  $\mathbf{A}_{//}$  represent the effective contributions of the cellular processes to the tissue morphogenesis. When a cellular process produces an

anisotropic deformation in the same direction as that of tissue, e.g. cells divided in the same direction as tissue elongation, the scalar product between them returns a positive value, whereas it returns a negative value when a cellular process counteracts tissue deformation.

### Metric

Similarity of morphogenesis between different cell patches was defined as follows. For expansion/contraction of an area (isotropic deformation), similarity was given by difference in expansion/contraction rates.

Similarity of anisotropic deformation was given by a distance between two tensors  $\mathbf{Q}$  and  $\mathbf{Q}'$ ,

$$d(\mathbf{Q}, \mathbf{Q}') = \left\{ \left( \frac{\mathbf{Q}_{xx} - \mathbf{Q}_{yy}}{2} - \frac{\mathbf{Q}'_{xx} - \mathbf{Q}'_{yy}}{2} \right)^2 + (\mathbf{Q}_{xy} - \mathbf{Q}'_{xy})^2 \right\}^{1/2}. \quad (5)$$

For tensors with time-evolution  $\mathbf{Q}(t)$  and  $\mathbf{Q}'(t)$ , distance was given by a sum of the distance at each time point,

$$|\mathbf{Q} - \mathbf{Q}'| = \int d(\mathbf{Q}(t), \mathbf{Q}'(t)) dt, \quad (6)$$

as an analogy to distance between functions.

For the composition of cellular processes, the tensors of cellular processes were converted to effective contributions and combined into a vector  $(\mathbf{G}_{//}, \mathbf{D}_{//}, \mathbf{R}_{//}, \mathbf{S}_{//}, \mathbf{A}_{//})$ . A distance between two vectors was given by Euclidean distance, the square root of the sum of the square of the differences between corresponding elements, and a distance between vectors with time-evolution  $v(t)$  and  $v'(t)$  was given by a sum of the distance at each time point,

$$|v - v'| = \int \|v(t) - v'(t)\| dt. \quad (7)$$

### Silhouette and bootstrap

Silhouette quantifies clustering results, indicating how well an object resembles other objects inside its own cluster (Rousseeuw, 1987). Assuming that  $n$  objects  $\{p_1, p_2, \dots, p_n\}$  are partitioned into  $k$  clusters  $\{C_1, C_2, \dots, C_k\}$ , for an object  $p_i \in C_i$ , we can compute the average distance  $a(p_i)$  from  $p_i$  to all other objects in  $C_i$ . For  $J \neq I$ , we can also compute the average distance  $d(p_i, C_J)$  from  $p_i$  to all objects in  $C_J$ , and select the smallest of those, denoted by  $b(p_i) = \min_{J \neq I} d(p_i, C_J)$ . The silhouette value  $s(p_i)$  is obtained by combining  $a(p_i)$  and  $b(p_i)$  as follows:

$$s(p_i) = \frac{b(p_i) - a(p_i)}{\max\{a(p_i), b(p_i)\}}. \quad (8)$$

By this definition,  $-1 \leq s(p) \leq 1$ , where  $s(p)$  large and close to 1 indicates that  $p$  is similar to other objects in the same cluster, whereas negative  $s(p)$  indicates that there is another cluster with objects more similar to  $p$  than objects in the cluster containing  $p$ .

We took the average silhouette value over all points (cell patches) as a measurement of homogeneity of a given segmentation. For a significance test, tissue was segmented randomly (see below) 20,000 times into a given number, and we got thresholds above which the highest 5%, 0.5% or 0.05% of the average silhouettes were found. The average silhouette of given regions was compared with those of the control segmentations with the same number of regions.

### Adjusted Rand index

For a measurement of similarity between tissue segmentations, we use the Rand index, which indicates how well two data clusterings agree; its value is 0 if the clusterings entirely disagree and 1 if they entirely agree. Its corrected-for-chance version, the ARI, is a more meaningful quantity: it is the Rand index compared with its value expected for the random case, and its value can be negative.

We computed the ARI with the permutation model (Hubert and Arabie, 1985). Given two clusterings  $A = \{A_1, \dots, A_k\}$  and  $B = \{B_1, \dots, B_m\}$  of  $N$  elements, the contingency table  $\tau = (n_{ij})_{k \times m}$  is made where  $n_{ij} = |A_i \cap B_j|$ .

The Rand index between  $A$  and  $B$ ,  $RI(A, B)$  is

$$RI(A, B) = \frac{2 \sum_{ij} \binom{n_{ij}}{2} - \sum_i \binom{a_i}{2} - \sum_j \binom{b_j}{2} + \binom{N}{2}}{\binom{N}{2}}, \quad (9)$$

where  $a_i = \sum_j n_{ij}$  and  $b_j = \sum_i n_{ij}$ , and for the random case the expected Rand index  $E[RI(A, B)]$  is

$$E[RI(A, B)] = \frac{\sum_i \binom{a_i}{2} \sum_j \binom{b_j}{2}}{\binom{N}{2} \binom{N}{2}} + \left( 1 - \frac{\sum_i \binom{a_i}{2}}{\binom{N}{2}} \right) \times \left( 1 - \frac{\sum_j \binom{b_j}{2}}{\binom{N}{2}} \right). \quad (10)$$

Finally, the ARI( $A, B$ ) is

$$ARI(A, B) = \frac{RI(A, B) - E[RI(A, B)]}{1 - E[RI(A, B)]}. \quad (11)$$

### Tissue segmentation pipeline

The pipeline was implemented by custom Matlab scripts, in three steps (Fig. 1C). The Matlab scripts are available at GitHub (<https://doi.org/10.5281/zenodo.4270726>). Also, see supplementary Materials and Methods for pseudo codes of the scripts.

### Region growing tissue segmentation

The initial tissue segmentation first defines a metric of similarity between cells, and then a tissue is divided into regions containing similar cells. This approach was inspired by a study segmenting mouse heart based on cell polarity (Le Garrec et al., 2013). On the assumption that expression patterns of genes responsible for morphogenesis make connected regions, and to study physical interactions between the regions, we aimed at getting connected regions.

The algorithm ‘Region growing’ (Adams and Bischof, 1994; Ma et al., 2010) is an image segmentation method using a process similar to  $k$ -means clustering, starting from randomly given seeds (corresponding to ‘means’ in  $k$ -means clustering), segmenting an image with the seeds followed by update of the seeds within the regions, and iterating this process until convergence (Fig. 2A). The tissue segmentation is carried out by growing regions from the seeds collecting pixels adjacent to the growing regions, and so the resultant regions are connected.

Initial seeds were randomly chosen from data, and regions were expanded by adding a pixel (cell patch) adjacent to a region and the most similar to the seed of the region in the property space one by one until all pixels were assigned to one of the regions. The seeds were updated to pixels closest to centroids of the regions, averages of the regions in the property space were given as a property of the seeds, and then regions were expanded again from the seeds. These region expansions and seed updates were iterated until convergence was reached.

### Preparation of control segmentations

The control segmentations were made using an algorithm similar to the region growing but ignoring the similarity between points. From randomly given seeds, regions were expanded by adding a pixel adjacent to a region, where the added pixel was chosen randomly from all adjacent pixels, until all pixels were assigned to one of the regions. Therefore any obtained region is connected.

### Label propagation on a consensus matrix

To merge multiple segmentation results into a single one independent on the metric, we used a label propagation algorithm on a consensus matrix, which

takes multiple partitions and returns a consensus partition which is the most similar to all partitions (Lancichinetti and Fortunato, 2012; Raghavan et al., 2007).

For a division of  $n$  points, 50 independent trials of region growing were converted to a consensus matrix, the entry of which at  $i$ -th row and  $j$ -th column indicates a frequency of partitions in which  $i$ -th point and  $j$ -th point were in the same cluster. The entries lower than a given threshold were set to 0. The label propagation started by assigning a different label to each point. Then the label of randomly chosen  $i$ -th point was updated to one that was the most weighted by the consensus matrix, where  $ij$  element gave the weight to a label of  $j$ -th point. The label update was iterated until convergence. The threshold for the consensus matrix was scanned between 20 and 80% so that a resultant partition contained the same number of regions as the initial partitions.

### Cellular Potts model for boundary smoothing

To smooth the consensus region boundaries while preserving region area and homogeneity, we used the cellular Potts model, in which a cellular structure is numerically simulated in a square lattice, where each cell is a set of pixels. The system energy depends on cell shapes, and the pattern is updated in an iteration to decrease the energy, with some fluctuation allowance (Graner and Glazier, 1992). In the simplest and most-common two-dimensional form, the energy  $\mathcal{H}$  arises from total perimeter length  $P$  (with line energy  $J$ ) and constraint on each region area  $A$  (with compressibility  $\lambda$ ); decreasing it results in smoother regions with preserved area  $A_0$ , removing small protrusions and disconnected regions. In this study, we also included the silhouette  $s$  to account for the region homogeneity, with a weight coefficient  $h$ :

$$\mathcal{H} = \sum_{\text{regions}} [JP + \lambda(A - A_0)^2 - hs]. \quad (12)$$

The coefficients  $J$ ,  $\lambda$ , and  $h$  were screened as described below.

When updating the label for a randomly selected pixel  $a$ , a target label was randomly selected from neighbors of  $a$ , and then Hamiltonian change was calculated. The label of  $a$  was updated to the target label with probability  $\min(1, e^{-\Delta\mathcal{H}/T})$ , where  $\Delta\mathcal{H}$  denotes change of  $\mathcal{H}$  by the change of label of  $a$ , and  $T$  is the fluctuation allowance. In the present application, the updates of labels were iterated 50 times. For resultant regions, a circularity  $C$  was calculated, where it was defined as  $C=4\pi \times \text{area}/\text{perimeter}^2$  (Bosveld et al., 2016). The parameters  $J$ ,  $\lambda$ ,  $h$  and  $T$  were screened for resultant regions with the highest homogeneity and circularity larger than a given threshold value. The screening was performed in a pairwise testing manner on a grid, and the grid was converged to the highest homogeneity. With the screened parameters, the boundary smoothing was iterated 50 times, and the results were integrated again by the label propagation on a consensus matrix algorithm.

### Cellular Potts model for tissue compression simulation

For the simulation of cells in a compressed tissue, the cellular Potts model was implemented by custom Matlab scripts, which are available at GitHub (<http://doi.org/10.5281/zenodo.5016684>). It is simulated on a torus surface so the cells made a periodic pattern. The initial configuration was prepared by the Voronoi tessellation from 600 randomly scattered points. The points were randomly selected from  $864 \times 150$  pt<sup>2</sup> plane in a sequential manner so that all points were at least 10 pt away from the others. Cells on the left side were assigned the low line energy  $J_{\text{soft}}=1$  and cells on the right side were assigned the high line energy  $J_{\text{stiff}}=4$ . All cells were assigned the same compressibility  $\lambda=1$ . For the compression, the initial configuration was transformed into a  $480 \times 270$  image. Then dynamics of the cells was simulated for 975,000 updates.

To be processed by the tools developed in Guirao et al. (2015), images of the cells were projected on a plane and converted to cell segmentation. As all pixels belonged to one of the cells in the cellular Potts model and the cells were not separated by boundary (watershed) pixels, we first labeled the pixels with ‘perimeter’ or ‘inner’, where the perimeter pixels were adjacent to different cells and the inner pixels were enclosed by the perimeter pixels. Then the perimeter pixels were re-labeled one-by-one to inner so that all

inner pixels were connected in each cell, all perimeter pixels were adjacent to inner pixels of the same cell, and no inner pixel was adjacent to inner pixel in different cells. The labels were updated as much as possible, and remaining perimeter pixels were taken as the boundary.

#### Acknowledgements

The authors thank Floris Bosveld for imaging, Stéphane U. Rigaud for cell segmentation and tracking, Yohanns Bellaïche for useful advice, and all team members for insightful discussions.

#### Competing interests

The authors declare no competing or financial interests.

#### Author contributions

Conceptualization: S.Y.; Methodology: S.Y.; Software: S.Y., B.G.; Validation: S.Y.; Resources: B.G.; Writing - original draft: S.Y.; Writing - review & editing: F.G.; Visualization: S.Y.; Supervision: F.G.; Funding acquisition: S.Y.

#### Funding

This research was supported by grants to S.Y. from Uehara Memorial Foundation (201630059) and the Japan Society for the Promotion of Science (201860572).

#### Data availability

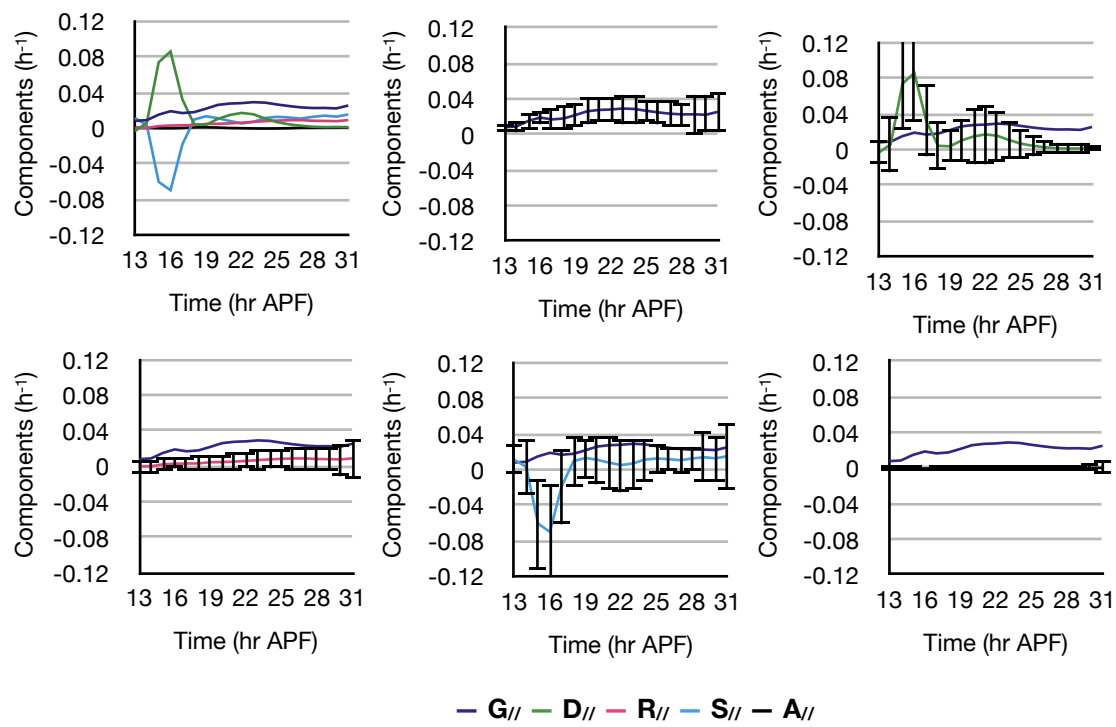
Matlab scripts are available at GitHub (<https://doi.org/10.5281/zenodo.4270726>)

#### Peer review history

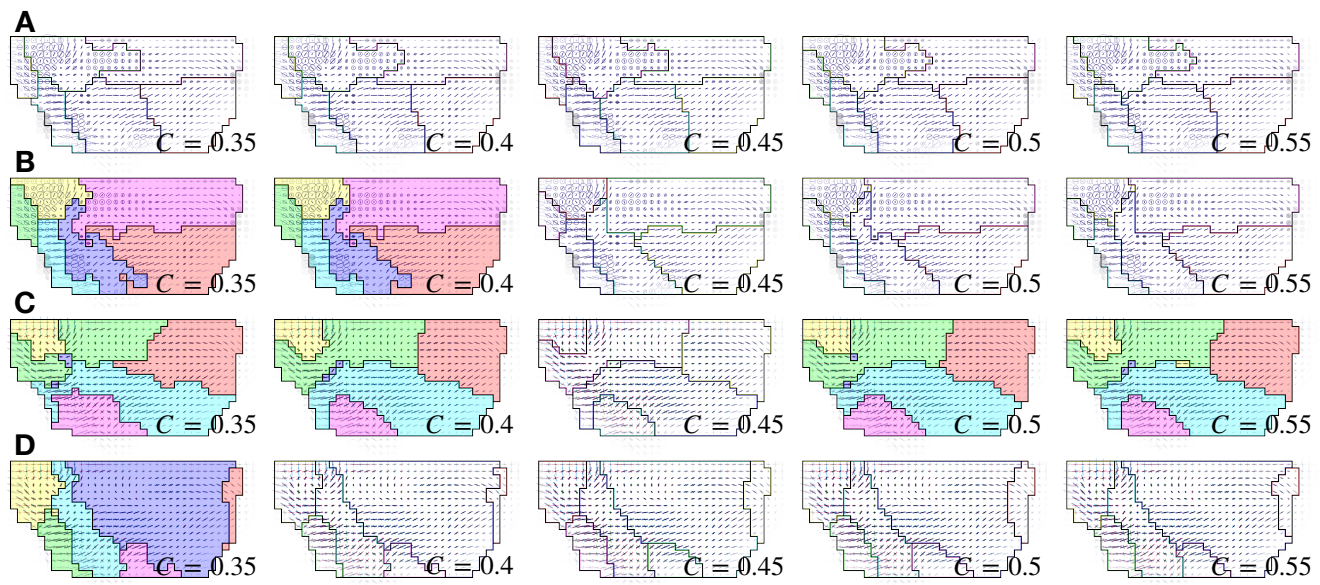
The peer review history is available online at <https://journals.biologists.com/dev/article-lookup/doi/10.1242/dev.199034>.

#### References

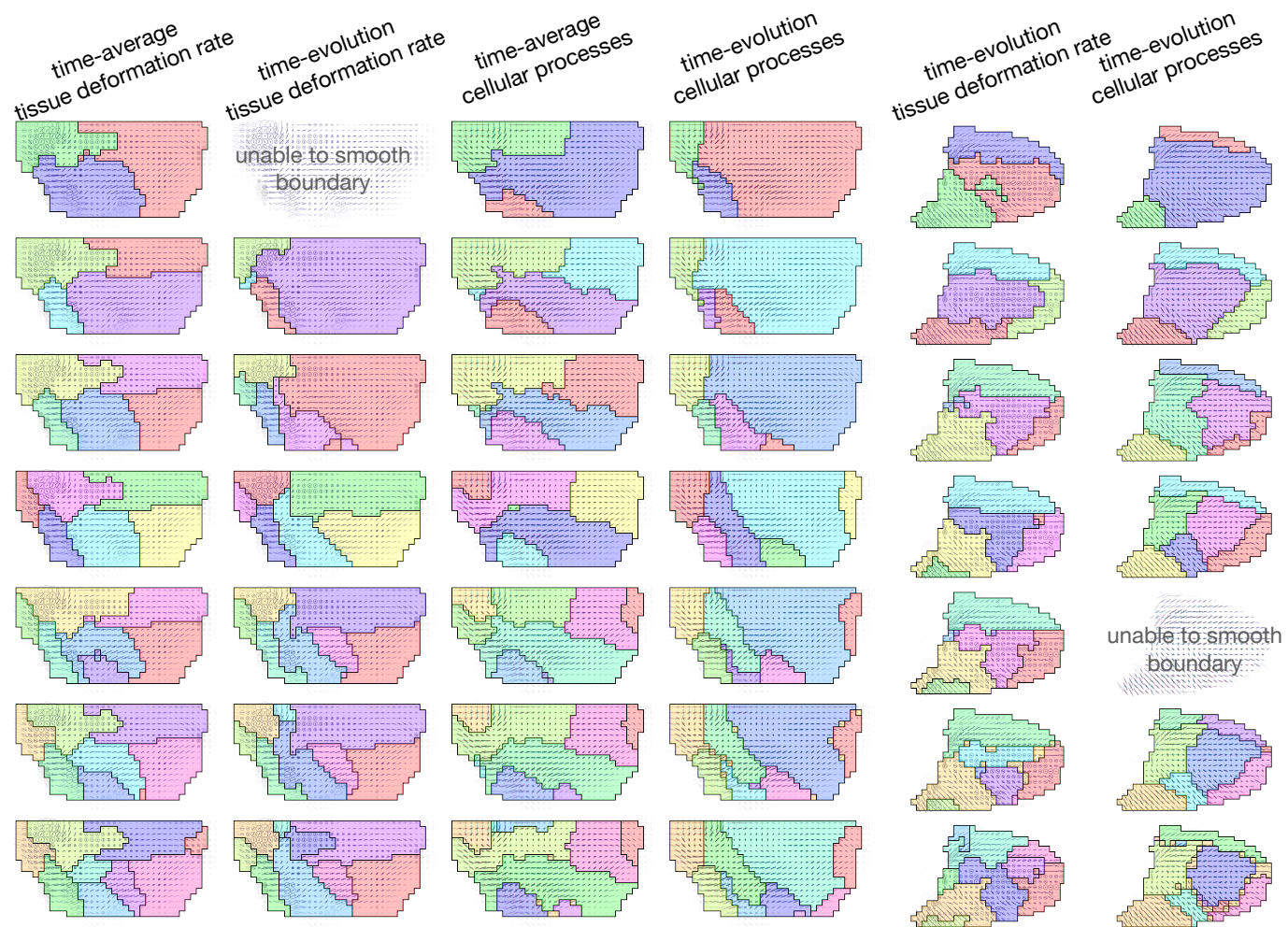
- Adams, R. and Bischof, L. (1994). Seeded region growing. *IEEE Trans. Pattern Anal. Mach. Intell.* **16**, 641-647. doi:10.1109/34.295913
- Blanchard, G. B., Kabla, A. J., Schultz, N. L., Butler, L. C., Sanson, B., Gorfinkiel, N., Mahadevan, L. and Adams, R. J. (2009). Tissue tectonics: morphogenetic strain rates, cell shape change and intercalation. *Nat. Methods* **6**, 458-464. doi:10.1038/nmeth.1327
- Bosveld, F., Bonnet, I., Guirao, B., Tlili, S., Wang, Z., Petitalot, A., Marchand, R., Bardet, P.-L., Marcq, P., Graner, F. et al. (2012). Mechanical control of morphogenesis by fat/dachsous/four-jointed planar cell polarity pathway. *Science* **336**, 724-727. doi:10.1126/science.1221071
- Bosveld, F., Guirao, B., Wang, Z., Rivièrè, M., Bonnet, I., Graner, F. and Bellaïche, Y. (2016). Modulation of junction tension by tumor suppressors and proto-oncogenes regulates cell-cell contacts. *Development* **143**, 623-634. doi:10.1242/dev.127993
- Brodland, G. W., Chen, X., Lee, P. and Marsden, M. (2010). From genes to neural tube defects (ntds): insights from multiscale computational modeling. *HFSP J.* **4**, 142-152. doi:10.2976/1.3338713
- Collinet, C., Rauzi, M., Lenne, P.-F. and Lecuit, T. (2015). Local and tissue-scale forces drive oriented junction growth during tissue extension. *Nat. Cell Biol.* **17**, 1247-1258. doi:10.1038/ncb3226
- Dicko, M., Saramito, P., Blanchard, G. B., Lye, C. M., Sanson, B. and Étienne, J. (2017). Geometry can provide long-range mechanical guidance for embryogenesis. *PLoS Comput. Biol.* **13**, e1005443. doi:10.1371/journal.pcbi.1005443
- Economou, A. D., Brock, L. J., Cobourne, M. T. and Green, J. B. A. (2013). Whole population cell analysis of a landmark-rich mammalian epithelium reveals multiple elongation mechanisms. *Development* **140**, 4740-4750. doi:10.1242/dev.096545
- Etournay, R., Popović, M., Merkel, M., Nandi, A., Blasse, C., Aigouy, B., Brandl, H., Myers, G., Salbreux, G., Jülicher, F. et al. (2015). Interplay of cell dynamics and epithelial tension during morphogenesis of the *Drosophila* pupal wing. *eLife* **4**, e07090. doi:10.7554/eLife.07090
- Feroze, R., Shawky, J. H., von Dassow, M. and Davidson, L. A. (2015). Mechanics of blastopore closure during amphibian gastrulation. *Dev. Biol.* **398**, 57-67. doi:10.1016/j.ydbio.2014.11.011
- Firmino, J., Rocancourt, D., Saadaoui, M., Moreau, C. and Gros, J. (2016). Cell division drives epithelial cell rearrangements during gastrulation in chick. *Dev. Cell* **36**, 249-261. doi:10.1016/j.devcel.2016.01.007
- Graner, F. and Glazier, J. A. (1992). Simulation of biological cell sorting using a two-dimensional extended Potts model. *Phys. Rev. Lett.* **69**, 2031-2036. doi:10.1103/PhysRevLett.69.2031
- Guirao, B., Rigaud, S. U., Bosveld, F., Bailles, A., López-Gay, J., Ishihara, S., Sugimura, K., Graner, F. and Bellaïche, Y. (2015). Unified quantitative characterization of epithelial tissue development. *eLife* **4**, e08519. doi:10.7554/eLife.08519
- Hubert, L. and Arabie, P. (1985). Comparing partitions. *J. Classif.* **2**, 193-218. doi:10.1007/BF01908075
- Lancichinetti, A. and Fortunato, S. (2012). Consensus clustering in complex networks. *Sci. Rep.* **2**, 336. doi:10.1038/srep00336
- Lau, K., Tao, H., Liu, H., Wen, J., Sturgeon, K., Sorfazlian, N., Lazic, S., Burrows, J. T. A., Wong, M. D., Li, D. et al. (2015). Anisotropic stress orients remodelling of mammalian limb bud ectoderm. *Nat. Cell Biol.* **17**, 569-579. doi:10.1038/ncb3156
- Le Garrec, J.-F., Ragni, C. V., Pop, S., Dufour, A., Olivo-Marin, J.-C., Buckingham, M. E. and Meilhac, S. M. (2013). Quantitative analysis of polarity in 3D reveals local cell coordination in the embryonic mouse heart. *Development* **140**, 395-404. doi:10.1242/dev.087940
- Lye, C. M., Blanchard, G. B., Naylor, H. W., Muresan, L., Huisken, J., Adams, R. J. and Sanson, B. (2015). Mechanical coupling between endoderm invagination and axis extension in *Drosophila*. *PLoS Biol.* **13**, e1002292. doi:10.1371/journal.pbio.1002292
- Ma, Z., Tavares, J. M. R. S., Jorge, R. N. and Mascarenhas, T. (2010). A review of algorithms for medical image segmentation and their applications to the female pelvic cavity. *Comput. Methods Biomech. Biomed. Engin.* **13**, 235-246. doi:10.1080/10255840903131878
- Merkel, M., Etournay, R., Popović, M., Salbreux, G., Eaton, S. and Jülicher, F. (2017). Triangles bridge the scales: quantifying cellular contributions to tissue deformation. *Phys. Rev. E* **95**, 032401. doi:10.1103/PhysRevE.95.032401
- Perez-Mockus, G., Mazouni, K., Roca, V., Corradi, G., Conte, V. and Schweisguth, F. (2017). Spatial regulation of contractility by Neuralized and Bearded during furrow invagination in *Drosophila*. *Nat. Commun.* **8**, 1594. doi:10.1038/s41467-017-01482-8
- Raghavan, U. N., Albert, R. and Kumara, S. (2007). Near linear time algorithm to detect community structures in large-scale networks. *Phys. Rev. E Stat. Nonlin. Soft Matter Phys.* **76**, 036106. doi:10.1103/PhysRevE.76.036106
- Rauzi, M., Krzic, U., Saunders, T. E., Krajnc, M., Zihel, P., Hufnagel, L. and Leptin, M. (2015). Embryo-scale tissue mechanics during *Drosophila* gastrulation movements. *Nat. Commun.* **6**, 8677. doi:10.1038/ncomms9677
- Ray, R. P., Matamoro-Vidal, A., Ribeiro, P. S., Tapon, N., Houle, D., Salazar-Ciudad, I. and Thompson, B. J. (2015). Patterned anchorage to the apical extracellular matrix defines tissue shape in the developing appendages of *Drosophila*. *Dev. Cell* **34**, 310-322. doi:10.1016/j.devcel.2015.06.019
- Rousseeuw, P. J. (1987). Silhouettes: a graphical aid to the interpretation and validation of cluster analysis. *J. Comput. Appl. Math.* **20**, 53-65. doi:10.1016/0377-0427(87)90125-7
- Rozbicki, E., Chuai, M., Karjalainen, A. I., Song, F., Sang, H. M., Martin, R., Knölker, H.-J., MacDonald, M. P. and Weijer, C. J. (2015). Myosin-II-mediated cell shape changes and cell intercalation contribute to primitive streak formation. *Nat. Cell Biol.* **17**, 397-408. doi:10.1038/ncb3138



**Fig. S1.** Variance of effective contribution of cellular processes at each time point. Plots show time evolution of effective contribution of cellular processes in the *Drosophila* notum and standard deviation of them.

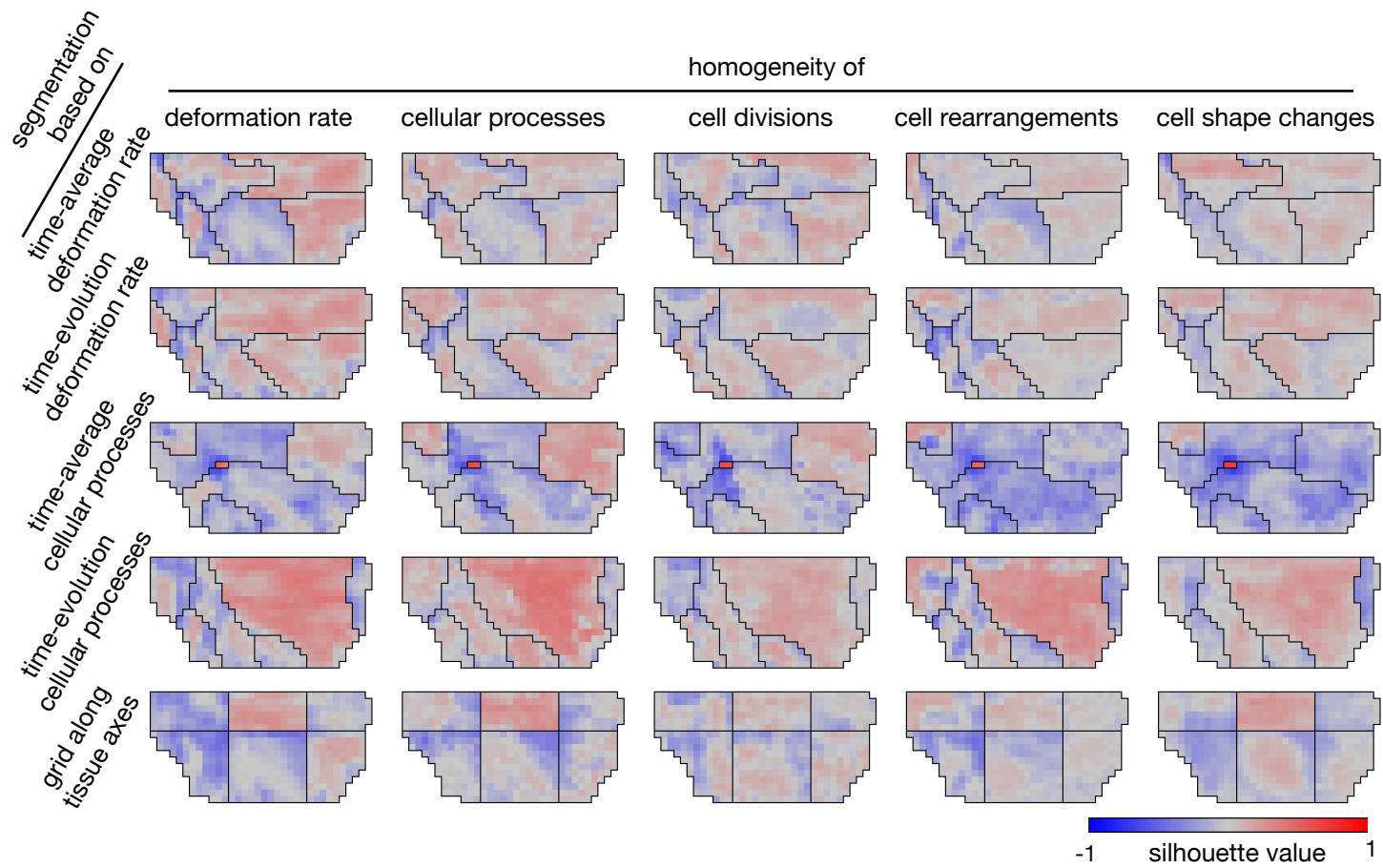


**Fig. S2.** Boundary smoothing with various minimum circularities. The *Drosophila* no-tum was divided based on time-average tissue deformation rate (**A**), time-evolution of tissue deformation rate (**B**), time-average cellular processes effective contributions (**C**), and time-evolution of cellular processes effective contributions. They were smoothed with the minimum circularity  $C$  ranging from 0.35 to 0.55. Some of them were colored for visibility.

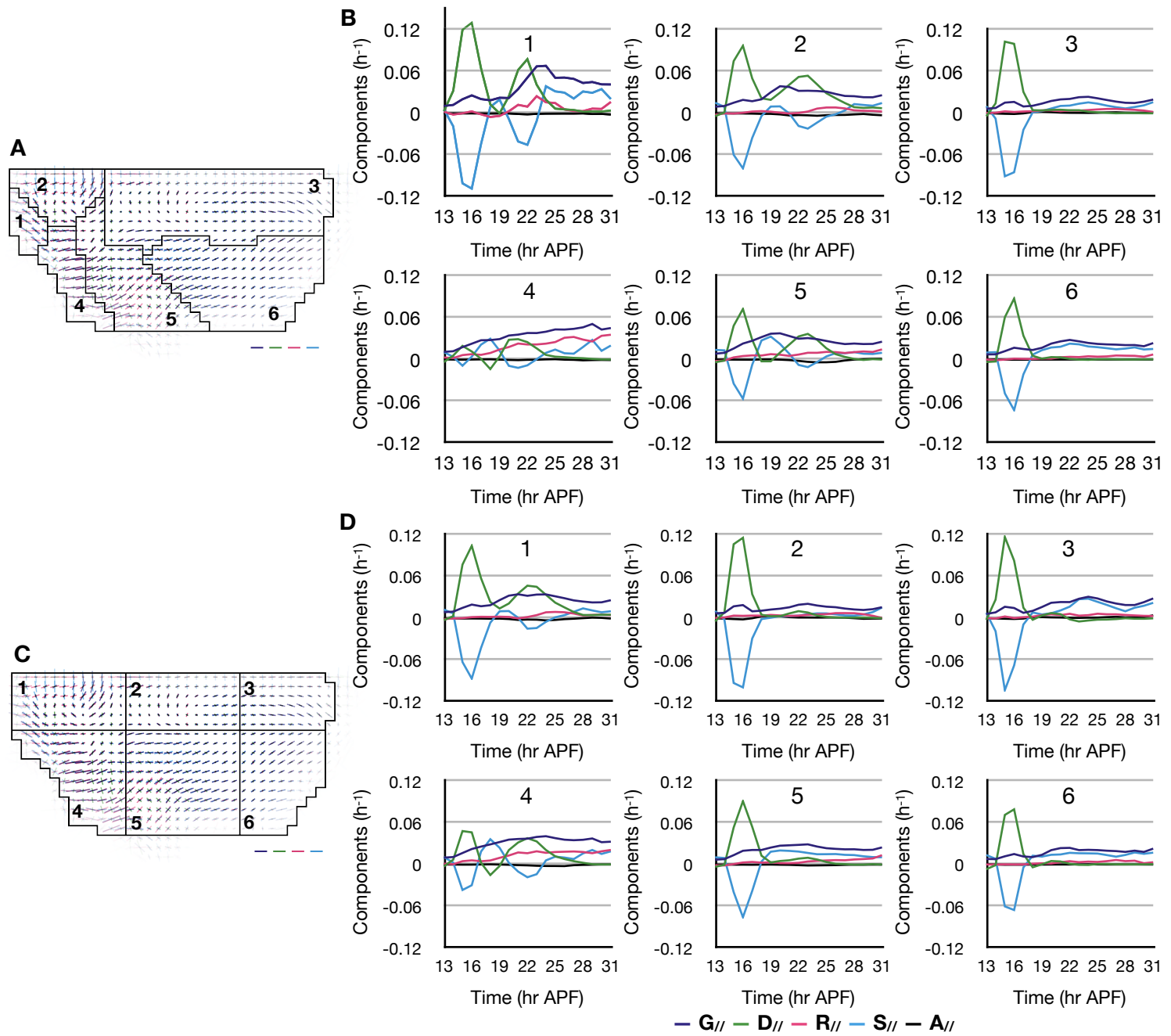


**Fig. S3.** Segmentations in different number of regions. Dorsal thorax (first to fourth columns) and wing blade (fifth and sixth columns) were divided into 3-9 regions. First column: segmentations based on time-average tissue deformation rate. Second column: segmentations based on time-evolution of tissue deformation rate. Third column: segmentations based on time-average cellular processes effective contributions. Fourth column: segmentations based on time-evolution of cellular processes effective contributions. Fifth column: segmentations based on time-evolution of tissue deformation rate. Sixth column: segmentations based on time-evolution of cellular processes effective contributions. The tissues were divided into 3 to 9 regions (from top to bottom rows). The regions were colored for visibility. When the number was too large and a result of the initial label propagation included a too small region, the small region tended to disappear in the cellular Potts model smoothing, and thus the final label propagation tried to integrate regions fewer than the final segmentation, sometimes resulted in undesired dis-connected regions (third column bottom row and fourth column sixth row). For dividing the dorsal thorax into three regions based on time-evolution of tissue deformation rate and wing blade into seven regions based on time-evolution of cellular processes effective contributions, it failed to screen the parameters (the screening algorithm pursued to a too low temperature which would freeze any change in the cellular Potts model, second column first row and sixth column fifth row).

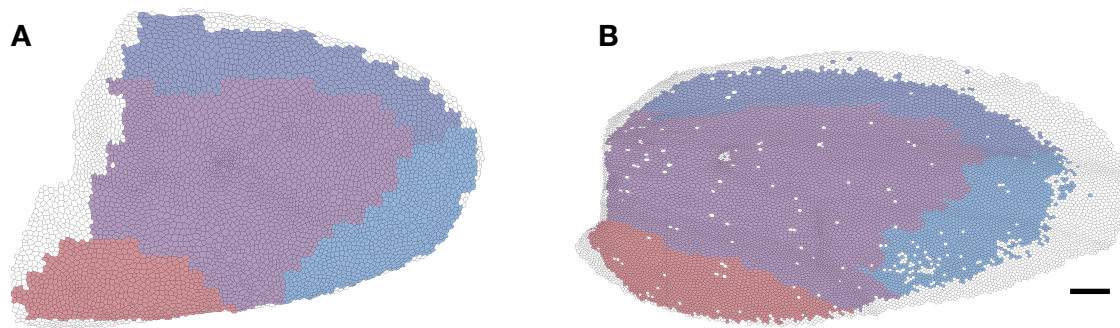




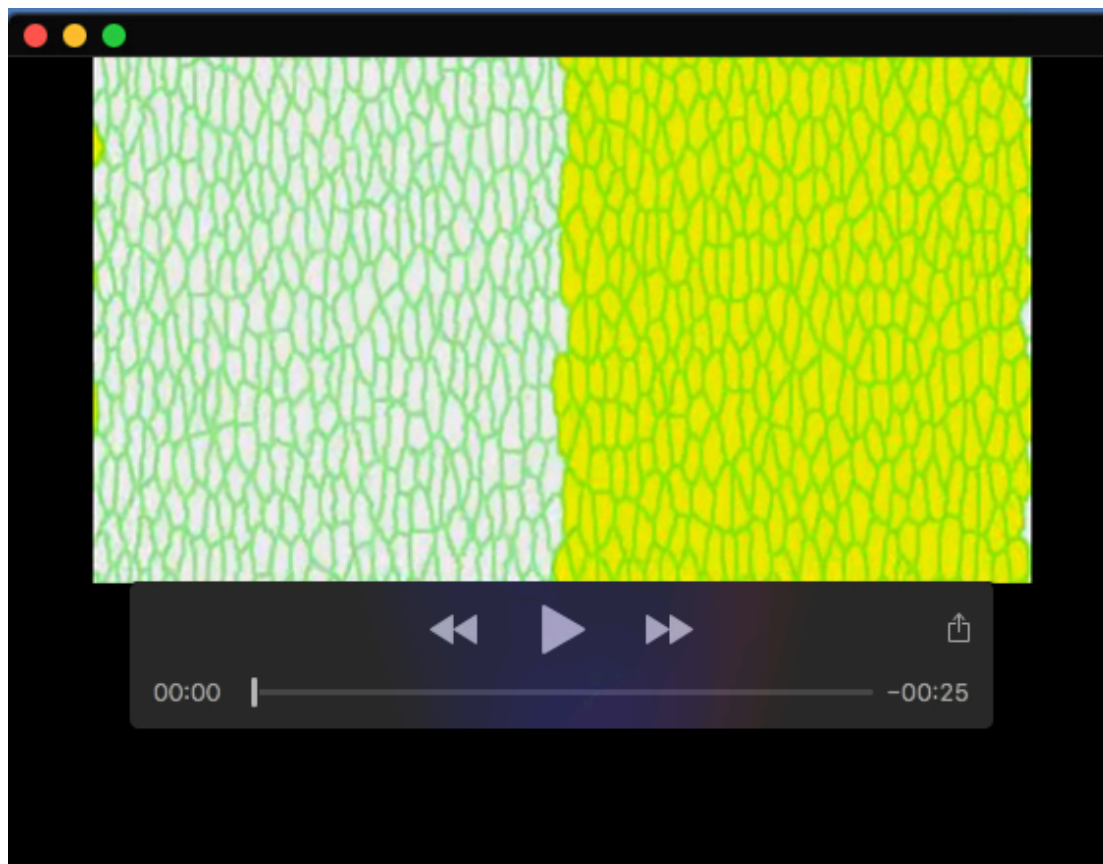
**Fig. S4.** Heat maps of silhouette value. First row: segmentation based on time-average tissue deformation rate. Second row: segmentation based on time-evolution of tissue deformation rate. Third row: segmentation based on time-average cellular processes effective contributions. Fourth row: segmentation based on time-evolution of cellular processes. Fifth row: conventional segmentation of large grid parallel to tissue axes. First column: silhouette values measured in the property space of time-evolution of de-formation rate. Second column: silhouette values measured by time-evolution of cellular processes. Third column: silhouette values measured by time-evolution of cell divisions. Fourth column: silhouette values measured by time-evolution of cell rearrangements. Fifth column: silhouette values measured by time-evolution of cell shape changes.



**Fig. S5.** Plots of cellular processes in the segmentations based on time evolution of tissue deformation rate and the conventional large grid. (**A**, **B**) The tissue segmentation based on time-evolution of tissue deformation rate (**A**) and plots of cellular processes effective contributions averaged in each region (**B**). The numbers indicate the regions. (**C**, **D**) The large grid (**C**) and plots of cellular processes in each region (**D**). Scale bars in **A** and **C** indicate deformation rate  $0.02 \text{ h}^{-1}$  with colors for tissue and cellular processes.



**Fig. S6.** Projection of the segmentation onto the wing blade cells. The segmentations based on time evolution of cellular processes were projected. (**A**, **B**) The segmentation was projected onto the wing blade cells at 15 hr (**A**) and 32 hr APF (**B**), where the regions were indicated by colors. Scale bars indicate 50  $\mu\text{m}$ .



**Movie 1.** Cell rearrangements and cell shape changes after tissue compression. The cells with low and high surface tension were colored gray and yellow respectively. The cellular Potts model was run on an image of  $480 \times 270$  lattice and included 600 cells. The movie is 7 fps and there were 5000 updates between the frames.

## Supplementary Materials and Methods

### 1 Pseudo codes for tissue segmentation algorithms

In below pseudo codes show algorithms of the automatic tissue segmentation. Matlab custom functions and framework developed for this study are available at GitHub (<http://doi.org/10.5281/zenodo.3626111>). For details of the functions and framework, see its README file and comments in the codes.

#### 1.1 Region growing algorithm

Algorithm 1 shows a pseudo code of the region growing image segmentation in Matlab-like syntax. It divides a bitmap image stored in a data object *dataMap*. In the algorithm, a number of regions, a limit to update the seeds, and a metric are given as parameters. With the parameters, supporting objects *seedList*, *meanList*, *regionsList*, *meter*, and *seeder* are allocated and initialized. The *seedList*, *meanList*, and *regionsList* are instances of data object with a property *var* representing seeds and means of regions and regions, shared among the supporting objects. The *meter* is an object measuring distance between the mean of region and a point adjacent to the region. A method *measure* returns the distance measured by the given metric. The *seeder* is an object choosing seeds of regions. Methods *initalSeeds* and *initialMeans* return indices of randomly chosen points and their values. Once the *dataMap* was divided into regions, methods *newSeeds* and *newMeans* return indices of points at center of the regions and mean values of the regions. A method *initalQueue* returns an array where its element represents a point adjacent to one of the seeds and holds the region and distance to the region's mean value. Inside a loop, a point in the queue with the smallest distance to the region's mean value is added to the region, and points adjacent to the point, returned by a method *neighborsOfPoint* of *dataMap*, are added to the queue.

In our tissue segmentation, a Matlab custom function *run\_region\_growing()* iterates this algorithm for given time, returning a stack of resultant partitions.

#### 1.2 Label propagation on a consensus matrix

Algorithm 2 shows a pseudo code of the label propagation. It divides  $N$  objects into clusters based on an  $N \times N$  consensus matrix  $M$  whose rows and columns correspond to the objects, and an element  $m_{ij}$  represents the frequency at which the  $i$ -th and  $j$ -th objects were included in a cluster among given clustering results. A parameter  $t_M$  indicates a threshold value, where elements in  $M$  smaller than  $t_M$  are ignored in the label propagation.

In the tissue segmentation, 50 results of region growing were converted to the consensus matrix and given to a Matlab custom function *run\_label\_propagation()* implementing the label propagation. The number of resultant regions is influenced by  $t_M$ , and thus a Matlab custom function *run\_cm\_thresholding\_lp()* screens  $t_M$  values so that *run\_label\_propagation()* returns the same number of regions with the given partitions.

---

**Algorithm 1:** Region growing algorithm

---

```

input : dataMap to be segmented and parameters.
% seedList, meanList, regionsList, allocatedList, meter, and seeder are
  supporting objects and variable initialized with the parameters.

seedList.var = seeder.initalSeeds;
meanList.var = seeder.initalMeans;
while loop counter is smaller than limit do
  % Initialize partition, allocated list, queue.
  regionsList.var(:) = false;
  allocatedList(:) = false;
  queue = seeder.initalQueue;
  while queue is not empty do
    point = queue(1);
    if allocatedList.var(point.index) == false then
      % Grow region to the point.
      regionsList.var(point.index, point.region) = true;
      allocatedList(point.index) = true;
      % Enqueue neighbors of the point.
      array = dataMap.neighborsOfPoint(point.index);
      for neighbor in array do
        neighbor.region = point.region;
        neighbor.distance = meter.measure(neighbor);
        queue = cat(1, queue, neighbor);
      endfor
      % Remove the allocated point from queue.
      queue(1) = [];
      % Sort queue.
      [values, indices] = sort([queue.distance]);
      queue = queue(indices);
    else
      queue(1) = [];
    end
  endwhile
  % Check convergnence.
  lastMeanList = meanList.var;
  seedList.var = seeder.newSeeds;
  meanList.var = seeder.newMeans;
  if isequal(lastMeanList, meanList.var) then
    break;
  endif
return regionsList.var

```

---

---

**Algorithm 2:** Label propagation

---

```

input : Matrix  $M$  and threshold  $t_M$ .
% Cut elements in  $M$  smaller than the  $t_M$ .
 $M(M < t_M) = 0$ ;
% Make labelArray representing labels on  $N$  vertices.
labelArray = (1:N)';
flag = true;
while flag do
    flag = false;
    % Enumerate vertices in random order and update their label.
    for  $i = \text{randperm}(N)$  do
        % Make labelMatrix representing labels on vertices.
        labelMatrix = labelArray == 1:N;
        % Choose label most weighted by edges incident to the  $i$ -th vertex.
        ,indices= max(sum( $M(:,i) .* \text{labelMatrix}$ ),1));
        if  $\text{labels}(i) \neq \text{indices}(1)$  then
            % Update label of the  $i$ -th vertex.
            labelArray( $i$ ) = indices(1);
            flag = true;
        end
    end
% Convert labelArray to a matrix.
labelMatrix = labelArray == 1:N;
indices = any(labelMatrix,1);
partition = labelMatrix(:,indices);
return partition

```

---

### 1.3 Cellular Potts model

Algorithm 3 shows a pseudo code of the cellular Potts model. It simulates a deformation of regions (partition of dataMap) by giving small fluctuations. In the algorithm, an array of function handles, coefficients to combine the functions results, the system temperature, and the number of label updates are given as parameters. With the regions and parameters, supporting objects *analyser* and *dict* are allocated and initialized. The functions in the array calculate system energy with *analyser* and *dict*. For each fluctuation, one of points at regions rim returned by analyser *rim\_points* is selected randomly, and a label of neighboring points is also selected randomly and copied. Connectedness of a region is checked locally, with a coordinate of neighboring points returned by dataMap *coordinates*.

In the tissue segmentation, a Matlab custom function *run\_CPM\_smoothing()* implement this algorithm with energy functions combining area constraint, surface tension, and total silhouette value. The coefficients and temperature influence resultant regions, and thus a Matlab custom function *run\_CPM\_fitting()* screens the parameters so that *run\_CPM\_smoothing()* returns smoothed regions with a circularity larger than the given value and the total silhouette value as large as possible.



**Algorithm 3:** Cellular Potts model with region homogeneity

---

```

input : Partition, dataMap, and parameters
% regionList, analyser, dict, H_functions, coefficients, T, and counter are
  supporting objects and variables initialized with the parameters.

% Calculate the system energy.
H = 0;
for k = 1:length(H_functions) do
  fh = H_functions(k);
  H = H + fh(analyser,dict) * coefficients(k);

% Update labels for given times.
while true do
  % Select a point randomly.
  rim = analyser.rim_points;
  rim = find(rim);
  if isempty(rim) then
    % There is only one region.
    break;
  i = ceil(rand() * length(rim));
  i = rim(i);

  % Select a label from neighbors of the point.
  neighbors = dataMap.neighborsOfPoint(i);
  j = ceil(rand() * length(neighbors));
  j = neighbors(j);
  if any(regionsList.var(i,:) & regionsList.var(j,:)) then
    % The i-th and j-th points are in a region.
    continue;

  % Check connectedness.
  m = zeros(3,'logical');
  x0 = dataMap.coordinates(i).x - 2;
  y0 = dataMap.coordinates(i).y - 2;
  for k = neighbors do
    x = dataMap.coordinates(k).x - x0;
    y = dataMap.coordinates(k).y - y0;
    m(y,x) = any(regionsList.var(i,:) & regionsList.var(k,:));
  array = m([1,2,3,6,9,8,7,4]);
  brray = m([2,3,6,9,8,7,4,1]);
  if sum(array ~= brray) > 2 then
    continue;

  % Get a change of energy.
  oldLabel = regionsList.var(i,:);

```

---

---

---

```
regionsList.var(i,:) = regionsList.var(j,:);
newH = 0;
k = 1:length(H.functions)
  fh = H.functions{k};
  newH = newH + fh(analyser,dict) * coefficients(k);
dH = newH - H;
% Adapt the change when possible.
p = exp(-dH / T);
if p > rand() then
  H = newH;
  counter = counter - 1;
  if counter < 1 then
    break;
else
  regionsList.var(i,:) = oldLabel;
return regionsList.var
```

---