



HAL
open science

Anisotropy of Magnetic Field Spectra at Kinetic Scales of Solar Wind Turbulence as Revealed by the Parker Solar Probe in the Inner Heliosphere

S. Huang, S. Xu, J. Zhang, Fouad Sahraoui, N. Andrés, J. He, Z. Yuan, X. Deng, K. Jiang, Y. Wei, et al.

► **To cite this version:**

S. Huang, S. Xu, J. Zhang, Fouad Sahraoui, N. Andrés, et al.. Anisotropy of Magnetic Field Spectra at Kinetic Scales of Solar Wind Turbulence as Revealed by the Parker Solar Probe in the Inner Heliosphere. *The Astrophysical journal letters*, 2022, 929 (1), pp.L6. 10.3847/2041-8213/ac5f02 . hal-03868796

HAL Id: hal-03868796

<https://hal.science/hal-03868796>

Submitted on 24 Nov 2022

HAL is a multi-disciplinary open access archive for the deposit and dissemination of scientific research documents, whether they are published or not. The documents may come from teaching and research institutions in France or abroad, or from public or private research centers.

L'archive ouverte pluridisciplinaire **HAL**, est destinée au dépôt et à la diffusion de documents scientifiques de niveau recherche, publiés ou non, émanant des établissements d'enseignement et de recherche français ou étrangers, des laboratoires publics ou privés.



Anisotropy of Magnetic Field Spectra at Kinetic Scales of Solar Wind Turbulence as Revealed by the Parker Solar Probe in the Inner Heliosphere

S. Y. Huang^{1,2} , S. B. Xu¹, J. Zhang¹ , F. Sahraoui³, N. Andrés^{4,5} , J. S. He⁶ , Z. G. Yuan¹, X. H. Deng⁷, K. Jiang¹ , Y. Y. Wei¹, Q. Y. Xiong¹, Z. Wang¹, L. Yu¹, and R. T. Lin¹

¹ School of Electronic Information, Wuhan University, Wuhan, 430072, People's Republic of China; shiyonghuang@whu.edu.cn

² Hubei LuoJia Laboratory, Wuhan, 430079, People's Republic of China

³ Laboratoire de Physique des Plasmas, CNRS-Ecole Polytechnique-Sorbonne Université-Paris-Saclay-Observatoire de Paris-Meudon, Palaiseau, F-91128, France

⁴ Departamento de Física, Facultad de Ciencias Exactas y Naturales, UBA, Ciudad Universitaria, 1428, Buenos Aires, Argentina

⁵ Instituto de Astronomía y Física del Espacio, CONICET-UBA, Ciudad Universitaria, 1428, Buenos Aires, Argentina

⁶ School of Earth and Space Sciences, Peking University, Beijing, 100871, People's Republic of China

⁷ Institute of Space Science and Technology, Nanchang University, Nanchang, 330031, People's Republic of China

Received 2022 January 9; revised 2022 February 28; accepted 2022 March 11; published 2022 April 8

Abstract

Using the Parker Solar Probe data taken in the inner heliosphere, we investigate the power and spatial anisotropy of magnetic field spectra at kinetic scales (i.e., around sub-ion scales) in solar wind turbulence in the inner heliosphere. We find that strong anisotropy of the magnetic spectra occurs at kinetic scales with the strongest power in the perpendicular direction with respect to the local magnetic field (forming an angle θ_B with the mean flow velocity). The spectral index of the magnetic spectra varies from -3.2 to -5.8 when the angle θ_B changes from 90° to 180° (or 0°), indicating that strong anisotropy of the spectral indices occurs at kinetic scales in the solar wind turbulence. Using a diagnosis based on the magnetic helicity, we show that the anisotropy of the spectral indices can be explained by the nature of the plasma modes that carry the cascade at kinetic scales. We discuss our findings in light of existing theories and current development in the field.

Unified Astronomy Thesaurus concepts: [Solar wind \(1534\)](#); [Interplanetary turbulence \(830\)](#); [Heliosphere \(711\)](#); [Space plasmas \(1544\)](#)

1. Introduction

Turbulence is ubiquitous in the astrophysical and space plasmas and plays an essential role in particle heating, energy transport, and dissipation (e.g., Bruno & Carbone 2005; Sahraoui et al. 2009, 2010, 2020; Huang et al. 2010, 2012, 2014, 2017, 2020b, 2020c, 2020d, 2021a; Andrés et al. 2019, 2020, 2021; Huang & Sahraoui 2019). In the solar wind at magnetohydrodynamic (MHD) scales (the range between the outer scale and the ion characteristic scale), turbulence is thought to be dominated by the cascade of Alfvénic fluctuations (Iroshnikov 1963; Kraichnan 1965; Boldyrev 2006). Most recently, based on nearly incompressible (NI) MHD theory, Zank et al. (2021) argued that the MHD scale turbulence is dominated by the dissipation of quasi-two-dimensional (2D) turbulence, which can be the 2D magnetic islands or vortex structures that are commonly observed in the solar wind. In this range of scales, the magnetic field spectra have an index around $-5/3$, consistent with Kolmogorov's theory of turbulence (Kolmogorov 1941; Frisch 1995). At higher temporal frequencies (i.e., below ion spatial scales), the magnetic spectra steepen and have an index varying between -2.8 and -4.5 (e.g., Goldstein et al. 1995; Leamon et al. 1998; Sahraoui et al. 2013). This range of turbulence is often referred to as a dissipation (Goldstein et al. 1995) or a dispersive range (Saito et al. 2010). Sahraoui et al. (2010) used the cluster search coil data that extend the spectra to high frequencies and introduced the notion of the transition range ($\sim[0.4, 4]$ Hz),

where the spectra steepen to ~-4.0 before flattening to ~-2.8 at higher frequencies (e.g., Sahraoui et al. 2009, 2010, 2013; Huang et al. 2020d, 2021a).

In solar wind turbulence, spatial anisotropy has been studied for a long time, yet it is still hotly debated (e.g., Horbury et al. 2008, 2012; Chen et al. 2010; Oughton et al. 2015; Wang et al. 2016; Duan et al. 2021; Zhang et al. 2022). At MHD scales, Horbury et al. (2008) used 30 days of Ulysses data to compute and then fit the magnetic spectra for different angles θ_B (the angle between the radial direction and the local mean magnetic field), which is used as a proxy for investigating spatial anisotropy based on the Taylor hypothesis. They found that the spectra steepen from $-5/3$ to -2 as θ_B varies from 90° to 0° . This result was later confirmed by other studies (Podesta 2009; Luo & Wu 2010) and used as an argument in favor of the critical balance (CB) conjecture (Goldreich & Sridhar 1995), which predicts a spectrum that scales as $k_\perp^{-5/3}$ (and k_\parallel^{-2}) (Schekochihin et al. 2009). However, based on the same Ulysses data, Wang et al. (2016) adopted a stringent sampling criterion to select θ_B and found that the spatial anisotropy becomes weaker or even vanishes, which questions the validity of the CB conjecture to solar wind turbulence. Similar conclusions were recently reached by Telloni et al. (2019) based on WIND data and Zhao et al. (2020b) based on Parker Solar Probe (PSP) observations. Zank et al. (2020) suggested that this deviation from the CB conjecture can be well explained by NI MHD turbulence. Recently, utilizing data from PSP's first seven orbits, Zhao et al. (2022) reported the inertial-range magnetic-fluctuation anisotropy. They demonstrated that the wavevector anisotropy is generally consistent with the 2D-plus-slab turbulence model, and they further



Original content from this work may be used under the terms of the [Creative Commons Attribution 4.0 licence](#). Any further distribution of this work must maintain attribution to the author(s) and the title of the work, journal citation and DOI.

determined the fraction of power in the 2D-versus-slab component.

At kinetic scales, Chen et al. (2010) used a multispacecraft method to estimate the second-order structure functions S_{\parallel} and S_{\perp} of magnetic fluctuations at different angles θ_B . They showed that the perpendicular component is the major population, implying anisotropic fluctuations with $k_{\perp} > k_{\parallel}$. The spectra of the perpendicular and parallel component have slightly different indices at different field-separation angles. Recently, Huang et al. (2021b) found two populations in the 2D spatial correlation functions in the kinetic range of magnetosheath turbulence: the minor component elongated along the perpendicular direction and the major one elongated along the parallel direction, indicating that the distribution of magnetosheath turbulence in the wavenumber space is dominantly transverse to the background magnetic field with a weak component along the magnetic field (Sahraoui et al. 2006). Wang et al. (2020) calculated five-point second-order structure functions of the magnetic field in the magnetosheath to investigate three-dimensional anisotropies at sub-ion scales and found that the ratio between the statistical eddies' parallel and perpendicular lengths features a trend of rise and then fall, whereas the anisotropy in the perpendicular plane appears scale-invariant. Most recently, Duan et al. (2021) reported anisotropic magnetic energy spectra at kinetic scales in the inner heliosphere, where the spectral index varies from -3.7 to -5.7 in the transition range and -2.57 to -2.9 in the ion–electron scales when the angle θ_{VB} between the plasma flow and the magnetic field changes from 90° to 180° . Note that the CB conjecture when extended to sub-ion scales predicts a spectrum that is much steeper in the parallel direction (and k_{\parallel}^{-5}) than the perpendicular one ($k^{-7/3}$; Cho & Lazarian 2004; Schekochihin et al. 2009). However, such an anisotropy of the magnetic field spectra at kinetic scales has not been verified in the solar wind.

In the present study, the high time resolution data from the PSP mission located in the inner heliosphere (about 0.17 au) are used to investigate the anisotropy of magnetic field spectra at kinetic scales for different types of solar wind and different angles θ_B . When selecting and classifying the data samples as a function of the angle θ_B , both the criteria of Horbury et al. (2008) and those of Wang et al. (2016) were used separately to judge their (possible) impact on the results of the study.

2. Data and Methods

Measurements from the PSP mission's first solar encounter from 2018 October 31 to 2018 November 11 are used in this study. The FIELDS flux-gate magnetometer provides the data of the magnetic field vector (Bale et al. 2016; Malaspina et al. 2016), and the Solar Wind Electron, Alpha, Proton experiment provides the proton moment (including density, velocity, and temperature) data (Kasper et al. 2016; Case et al. 2020).

We utilize the Morelet wavelet to compute the power spectral densities (PSDs) and the Gaussian window method to obtain θ_B as a function of time and frequency (Horbury et al. 2008; Podesta 2009; He et al. 2011). Then, the θ_B values ranging from 0° to 180° were divided into 18 bins, and the spectra were classified into 18 categories. Two methods are used to determine which samples should be selected and how. With the first method (method 1), adopted by Horbury et al. (2008), the spectra are simply divided into 18 categories according to the value of θ_B . For each frequency (f) and each

angle bin (i), the average PSD is calculated by

$$\text{method 1: } \text{PSD}(i, f) = \frac{1}{N(i, f)} \times \sum_{\theta_B(t, f) \in [10(i-1), 10i]} \text{PSD}(t, f),$$

in which i ranges from 1 to 18, and $N(i, f)$ is the total number of samples in category i for each frequency. The second method (method 2), proposed by Wang et al. (2016), sets a stringent criterion to select the spectral samples. According to Podesta (2009), in order to calculate the PSD at time t_k for frequency f , the magnetic field data in the time interval of $[t_k - 1.5\tau, t_k + 1.5\tau]$ (where $\tau \sim 1/f$) are mainly used in the wavelet method. Therefore, if all θ_B in this time interval belong to the same angle bin, then the spectra at the time point t_k are retained within the corresponding category. Wang et al. (2016) selected the wavelet coefficients when the angles θ_B at the time instants $t_k - 1.5\tau$, t_k , and $t_k + 1.5\tau$ are all in this bin. In this way, for each frequency f and each angle bin, the average PSD reads as

$$\begin{aligned} \text{method 2: } \text{PSD}(i, f) &= \frac{1}{N(i, f)} \\ &\times \sum_{\substack{\theta_B(t, f) \in [10(i-1), 10i] \\ \theta_B(t-1.5\tau, f) \in [10(i-1), 10i] \\ \theta_B(t+1.5\tau, f) \in [10(i-1), 10i]}} \text{PSD}(t, f). \end{aligned}$$

Furthermore, the normalized reduced magnetic helicity (σ_m) is calculated using a wavelet transform (He et al. 2011; Huang et al. 2020d). The σ_m can be used to diagnose the polarization of solar wind turbulence (Matthaeus & Goldstein 1982), which can be linked to the classical wave polarization (see, e.g., Howes & Quataert 2010; He et al. 2011, 2012; Meyrand & Galtier 2012; Klein et al. 2014; Huang et al. 2020d). Here we also use the two methods described above to get the averaged σ_m for each θ_B bin and frequency f , namely,

$$\text{method 1: } \sigma_m(i, f) = \frac{1}{N(i, f)} \times \sum_{\theta_B(t, f) \in [10(i-1), 10i]} \sigma_m(t, f),$$

$$\begin{aligned} \text{method 2: } \sigma_m(i, f) &= \frac{1}{N(i, f)} \\ &\times \sum_{\substack{\theta_B(t, f) \in [10(i-1), 10i] \\ \theta_B(t-1.5\tau, f) \in [10(i-1), 10i] \\ \theta_B(t+1.5\tau, f) \in [10(i-1), 10i]}} \sigma_m(t, f). \end{aligned}$$

3. Results

Figure 1 shows the magnetic spectra for different θ_B bins obtained using methods 1 (panel (a)) and 2 (panel (b)). To separate the spectra of different angle bins, the values of the PSD shown in Figure 1 result from multiplying different coefficients of different θ_B bins. The frequency band ranges from 0.008 to 10 Hz, which includes the MHD inertial range (from 0.01 to 1 Hz) and the kinetic scales (from 2 to ~ 10 Hz). We fit magnetic spectra as a function of frequency (i.e., f^α) at the MHD scales, while the spectral indices are shown in Figures 1(c) and (d), respectively. Some indices at small θ_B are not available because there were a few spectral samples. The spectral indices range from -1.48 to -1.62 for method 1 and -1.45 to -1.63 for method 2, indicating that there is no

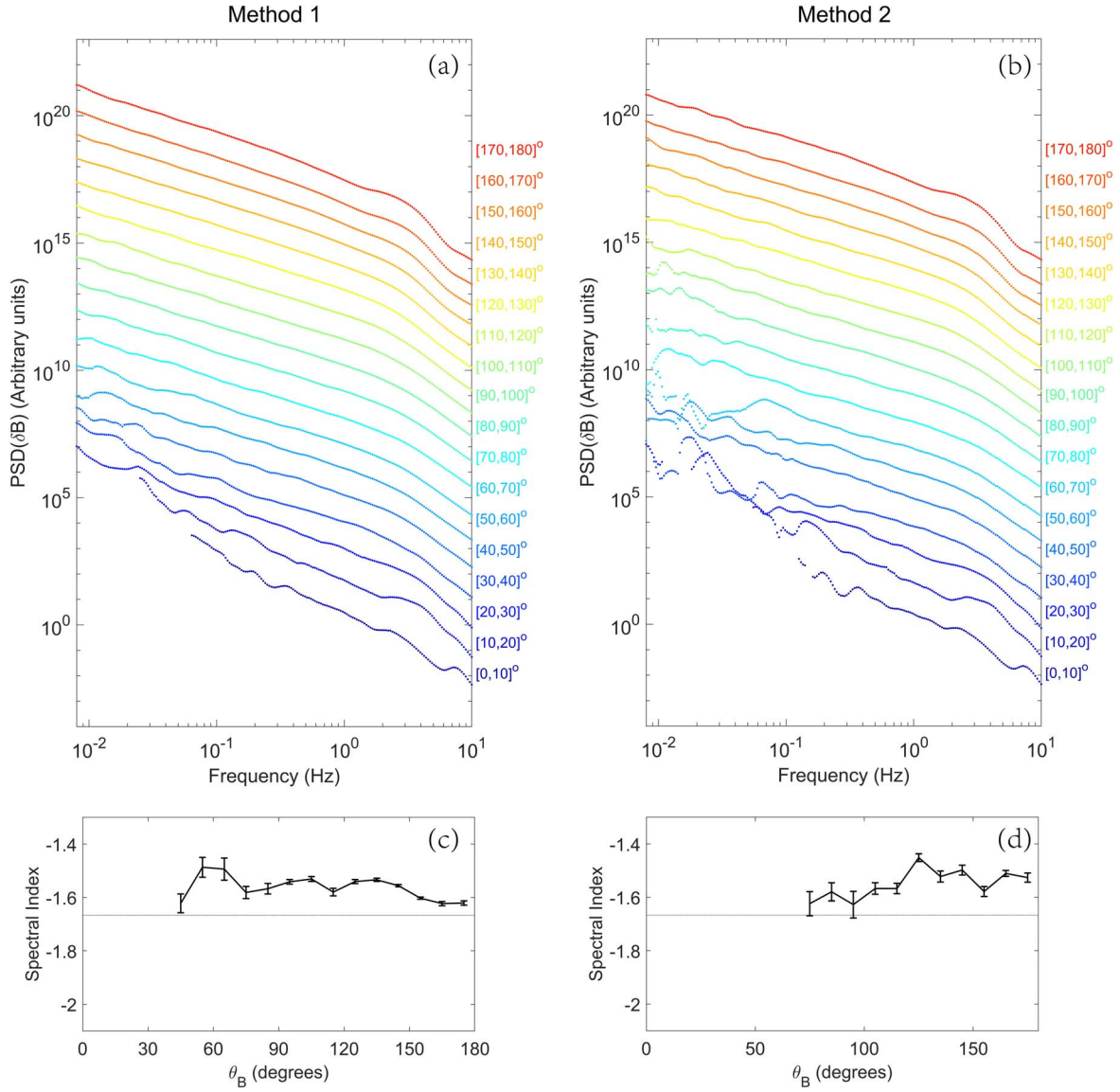


Figure 1. Magnetic spectra and spectral indices. Shown are the magnetic spectra at 18 angular bins based on methods 1 (panel (a)) and 2 (panel (b)), where the PSDs are shifted on the Y-axis for clarity, and spectral indices at MHD scales as a function of θ_B using methods 1 (panel (c)) and 2 (panel (d)).

apparent anisotropy at MHD scales in the solar wind, which may be the nature of the solar wind turbulence during the time interval of our interest.

Figures 2(a) and (b) show the joint distributions of normalized reduced magnetic helicity $\sigma_m(\theta_B, f)$ as a function of θ_B and frequency f based on methods 1 and 2, respectively. The normalized reduced magnetic helicity can be divided into two populations at kinetic scales. The first population has negative values of σ_m for frequencies between 2 and 10 Hz and angles $40^\circ < \theta_B < 140^\circ$, and the second population has positive values of σ_m for frequencies between 2 and 8 Hz and angles $\theta_B < 30^\circ$ or $> 150^\circ$. For an inward-oriented background magnetic field ($B_R < 0$), a forward left-handed polarized wave mode has positive magnetic helicity, while a forward right-handed polarized wave mode has negative magnetic helicity (e.g., He et al. 2011). The magnetic fluctuations with θ_B close to 0° or 180° correspond to waves propagating quasi-parallel or quasi-antiparallel to the mean magnetic field, while the magnetic fluctuations with θ_B close to 90° correspond to waves propagating quasi-perpendicular to the mean magnetic field

(e.g., He et al. 2011, 2015). Therefore, the magnetic fluctuations with positive σ_m around 0° or 180° can be identified as quasi-parallel left-handed Alfvén ion cyclotron waves (ACWs), while the magnetic fluctuations with negative helicity around 90° are likely to be quasi-perpendicular right-handed kinetic Alfvén waves (KAWs; He et al. 2011; Bruno & Telloni 2015; Huang et al. 2020d; Zhao et al. 2021a). It should be noted that a positive σ_m around 0° or 180° can also correspond to inward fast/whistler waves (Zhao et al. 2021b). However, it is hard to exclude the contribution of inward fast/whistler waves in our time interval because it requires high time resolution (at least $< \sim 0.1$ s) plasma data, which cannot be provided by PSP (Zhao et al. 2020a).

The spectra at kinetic scales (integrated in frequency) for different θ_B are shown in Figures 2(c) and (d). One can see that the integrated power is higher in the quasi-perpendicular direction ($\theta_B \sim 90^\circ$) and tends to decrease when the θ_B turns to the parallel (and antiparallel) direction. Figures 2(e) and (f) show the angular variation of the spectral indices (black curves) and magnetic helicity σ_m (red curves), calculated by their

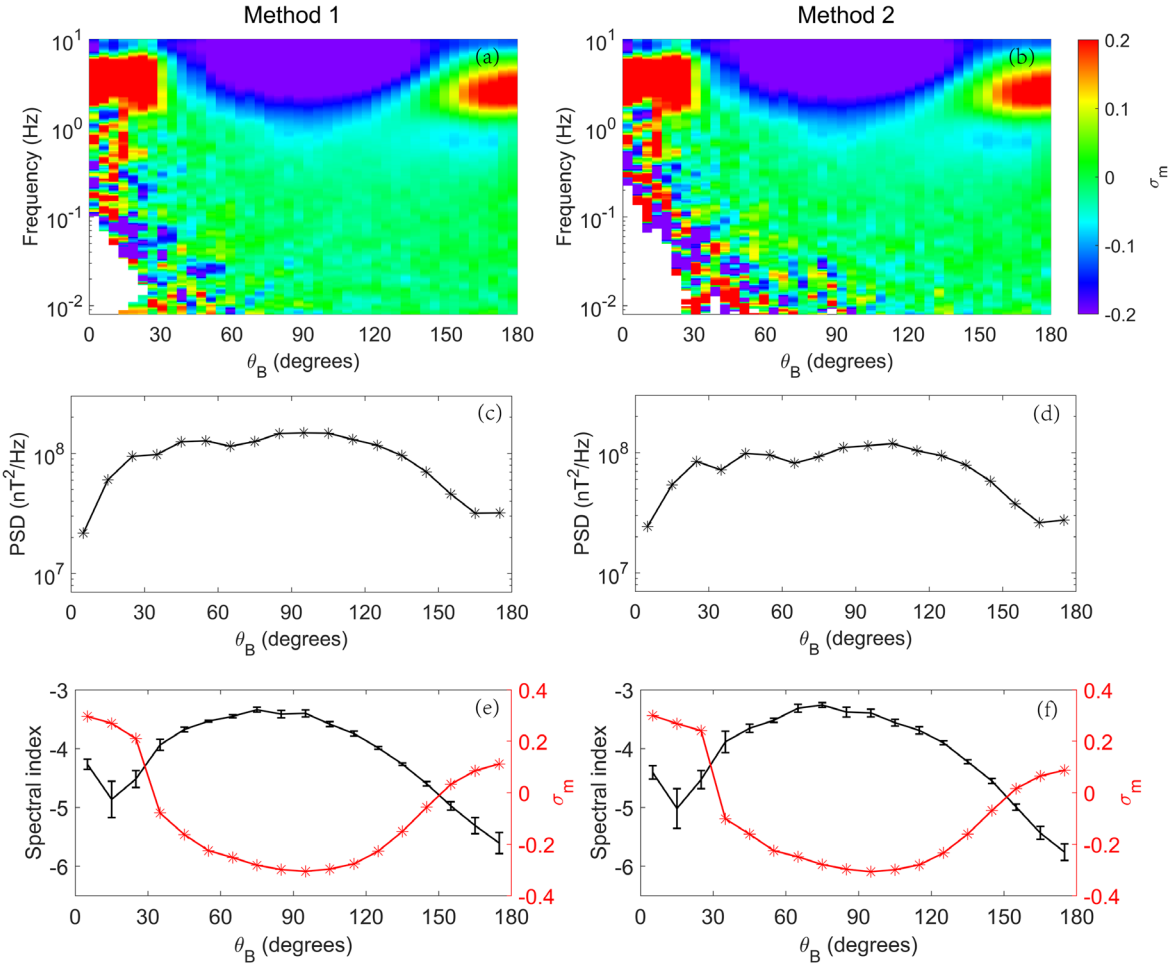


Figure 2. (a) and (b) Joint distributions obtained using the two methods of normalized reduced magnetic helicity σ_m as a function of frequency and θ_B . (c) and (d) Average power of spectral densities at kinetic scales in different angular bins. (e) and (f) Angular variations of the spectral index (black curves) and magnetic helicity σ_m (red curves) at kinetic scales.

averaged values within kinetic scales. The spectra have a slope around -3.4 in the perpendicular direction and become (continuously) steeper when θ_B turns to the (anti)parallel direction. The steepest spectrum appears in the bin $170^\circ < \theta_B < 180^\circ$, with a slope of -5.60 ± 0.18 (method 1) and -5.76 ± 0.14 (method 2). Moreover, compared with the trend of the spectral index and σ_m , one can see that the positive magnetic helicities are always accompanied by steeper spectra. In contrast, the negative magnetic helicities correspond to smaller spectral indices. This suggests a correlation between the presence of quasi-parallel left-handed (ACW) fluctuations and the steep spectra at kinetic scales, while flatter ones seem to correlate with quasi-perpendicular right-handed (KAW) fluctuations.

In addition, we investigate the variations of spectral index and magnetic helicity σ_m in the fast ($V_f > 380 \text{ km s}^{-1}$, $\langle V_f \rangle = 469 \text{ km s}^{-1}$) and slow ($V_f \leq 380 \text{ km s}^{-1}$, $\langle V_f \rangle = 295 \text{ km s}^{-1}$) solar wind. Considering that PSP observes little solar wind with a velocity above 500 km s^{-1} , and the solar wind speed increases with the radial distances during perihelion 1 of PSP (e.g., Huang et al. 2020a), it is credible to use the threshold of 380 km s^{-1} when close to the Sun to select the fast wind in the present study. Figure 3 shows the angular variations of spectral indices α and σ_m for both types of winds. In the slow solar wind, σ_m is about -0.2 in the perpendicular direction

with $\alpha \sim -3.2$ and about zero in the antiparallel direction with $\alpha \sim -5.7$, while σ_m can reach -0.4 in the perpendicular direction with $\alpha \sim -3.3$ and 0.3 in the antiparallel direction with $\alpha \sim -6.7$ in fast winds. These results suggest that the KAWs and ACWs in the fast solar wind are more significant than the ones in the slow solar wind, and the magnetic field spectra become steeper with positive σ_m in the antiparallel direction for the fast solar wind. Moreover, the magnetic spectra of the fast solar wind show a much stronger degree of anisotropy, with spectral indices reaching -6.7 in the bin of $170^\circ < \theta_B < 180^\circ$. These results support the finding above that the steep spectra (at kinetic scales) are closely related to ACWs, while flatter ones seem to be carried by KAW fluctuations.

4. Discussions and Conclusions

In the present study, we investigated the anisotropy of magnetic field spectra at kinetic scales in solar wind turbulence using the observations from PSP made in the inner heliosphere. Two different methods have been utilized to select samples of θ_B . The results lead to the same conclusion: the spectra have an anisotropic power at kinetic scales with the strongest values in the perpendicular direction ($\theta_B \sim 90^\circ$). The spectral index varies from -3.2 to -5.8 when the angle θ_B varies from 90° to $180^\circ/0^\circ$, concomitant with the variation of the magnetic helicity from negative to positive values. The observed

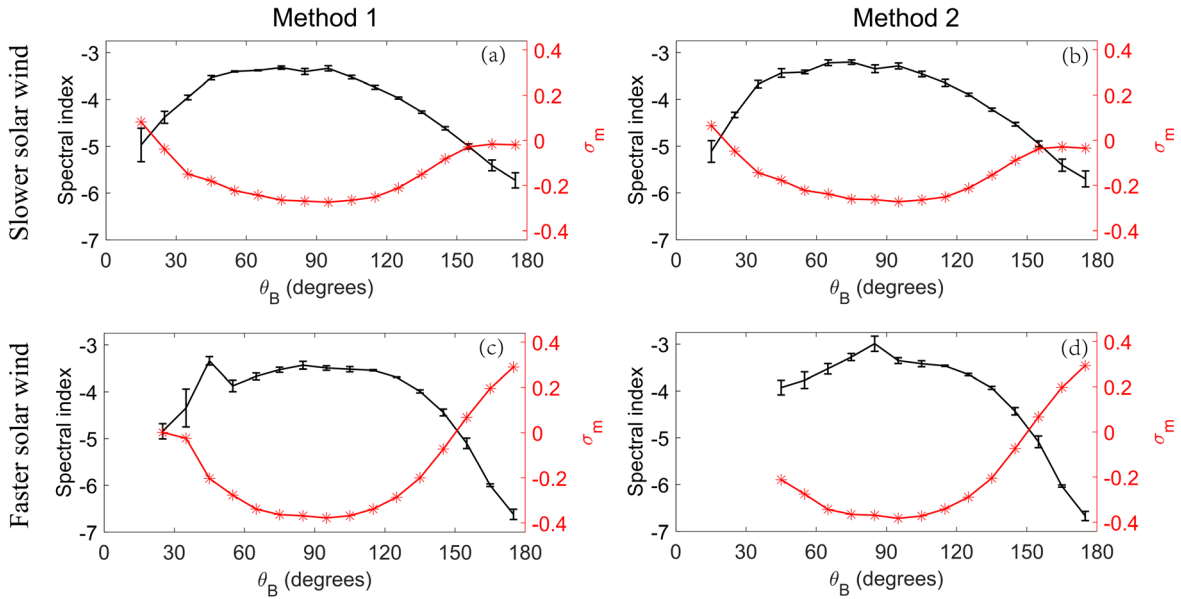


Figure 3. Spectral index (black curves) and magnetic helicity σ_m (red curves) at kinetic scales in the slow ((a) and (b)) and fast ((c) and (d)) solar wind based on two selection methods.

anisotropy seems to be controlled by the nature wave modes that carry the cascade at kinetic scales; the flat spectra with $\theta_B \sim 90^\circ$ originate from KAWs, while steep spectra with $\theta_B \sim 0^\circ$ or 180° come from ACWs. A distinction between slow and fast wind did not show a significant difference in the anisotropy of the spectral indices. However, a stronger anisotropy of the spectral indices is observed in fast wind with larger magnetic helicities, which further confirms that the nature of wave modes at kinetic scales determines the anisotropy of the spectral index.

Chen et al. (2010) and Sahraoui et al. (2010) found that the magnetic power at kinetic scales is dominated by quasi-perpendicular wavenumbers in the solar wind at 1 au. Chen et al. (2010) showed that the spectral index at kinetic scales varies from -3 along the parallel direction to -2.6 along the perpendicular direction, which is much flatter than our results in the inner heliosphere. Duan et al. (2021) reported anisotropic spectral indices that vary from -5.7 ± 1.3 to -3.7 ± 0.3 in the transition range (i.e., the kinetic scales defined in our work) from the parallel to the perpendicular directions with respect to the ambient magnetic field, which is compatible with our results. In addition, they found that the spectral index varies from -2.9 ± 0.2 to -2.57 ± 0.07 in the ion–electron range (with frequencies higher than those of the transition range). However, they did not give a possible explanation for the reported anisotropy. Our results confirm the close relationship between the magnetic helicities and the spectral indices at kinetic scales; the shallow spectra are controlled by the KAWs, while the steep ones are determined by the ACWs. Moreover, the steep power spectral indices at kinetic scales from the parallel to perpendicular directions prove that there is a transition range signature in all directions. This also confirms the model proposed by Sahraoui et al. (2009, 2010) that the second inertial range between the ion and electron scales occurs above the transition, where part of the energy is damped into proton heating. Based on the polarization of the fluctuations inferred from the magnetic helicity diagnosis, our results suggest that protons are likely to be heated by the KAWs or ACWs at kinetic scales.

Most recently, Meyrand et al. (2021) proposed that a “helicity barrier” near the ion scales could prevent the energy from cascading to smaller scales and give rise to a steep transition range in $\beta \ll 1$ plasma in the finite Larmor radius MHD turbulence. In their simulations, the perpendicular spectral indices near the ion scales can reach a value of about -3.8 . Using six-dimensional hybrid-kinetic simulations, Squire et al. (2022) found that the helicity barrier could drive ion heating by ACWs. They also observed a steep transition range with a spectral index up to -4 in the perpendicular direction accompanied by an enhanced (negative) σ_m that corresponds to KAWs and an even steeper parallel spectrum ($\alpha \sim -6$) with large positive σ_m that corresponds to ACWs. Considering that Squire et al. (2022) performed their simulations with a larger β (~ 0.3) plasma, which is closer to the values observed in the inner heliosphere, the mechanism of the helicity barrier seems to be a possible explanation of our present results.

This work was supported by the National Natural Science Foundation of China (42074196, 41874191, 41925018, 41874200) and the National Youth Talent Support Program. S.Y.H. acknowledges the project supported by the Special Fund of Hubei Luojia laboratory. N.A. acknowledges financial support from CNRS/CONICET Laboratoire International Associé (LIA) MAGNETO and financial support from the following grants: PICT 2018 1095 and UBACyT 20020190200035BA. The data sets analyzed in the present study are publicly available from NASA’s Space Physics Data Facility (SPDF) at <https://spdf.gsfc.nasa.gov/pub/data/psp/>.

ORCID iDs

S. Y. Huang <https://orcid.org/0000-0002-3595-2525>
 J. Zhang <https://orcid.org/0000-0001-5111-2609>
 N. Andrés <https://orcid.org/0000-0002-1272-2778>
 J. S. He <https://orcid.org/0000-0001-8179-417X>
 K. Jiang <https://orcid.org/0000-0001-7889-0507>
 R. T. Lin <https://orcid.org/0000-0003-4012-9418>

References

- Andrés, N., Romanelli, N., Hadid, L. Z., et al. 2020, *ApJ*, 902, 134
- Andrés, N., Sahraoui, F., Galtier, S., et al. 2019, *PhRvL*, 123, 245101
- Andrés, N., Sahraoui, F., Hadid, L. Z., et al. 2021, *ApJ*, 919, 19
- Bale, S. D., Goetz, K., Harvey, P. R., et al. 2016, *SSRv*, 204, 49
- Boldyrev, S. 2006, *PhRvL*, 96, 115002
- Bruno, R., & Carbone, V. 2005, *LRSP*, 2, 4
- Bruno, R., & Telloni, D. 2015, *ApJL*, 811, L17
- Case, A. W., Kasper, J. C., Stevens, M. L., et al. 2020, *ApJS*, 246, 43
- Chen, C. H. K., Horbury, T. S., Schekochihin, A. A., et al. 2010, *PhRvL*, 104, 255002
- Cho, J., & Lazarian, A. 2004, *ApJL*, 615, L41
- Duan, D., He, J., Bowen, T. A., et al. 2021, *ApJL*, 915, L8
- Frisch, U. 1995, *Turbulence; The Legacy of A.N. Kolmogorov* (Cambridge: Cambridge Univ. Press)
- Goldreich, P., & Sridhar, S. 1995, *ApJ*, 438, 763
- Goldstein, M. L., Roberts, D. A., & Matthaeus, W. H. 1995, *ARA&A*, 33, 283
- He, J., Marsch, E., Tu, C., Yao, S., & Tian, H. 2011, *ApJ*, 731, 85
- He, J., Tu, C., Marsch, E., & Yao, S. 2012, *ApJL*, 745, L8
- He, J., Wang, L., & Tu, C. 2015, *ApJL*, 800, L31
- Horbury, T., Wicks, R., & Chen, C. 2012, *SSRv*, 172, 325
- Horbury, T. S., Forman, M., & Oughton, S. 2008, *PhRvL*, 101, 175005
- Howes, G. G., & Quataert, E. 2010, *ApJL*, 709, L49
- Huang, J., Kasper, J. C., Vech, D., et al. 2020a, *ApJS*, 246, 70
- Huang, S., Sahraoui, F., Deng, X., et al. 2014, *ApJL*, 789, L28
- Huang, S. Y., Hadid, L. Z., Sahraoui, F., Yuan, Z. G., & Deng, X. H. 2017, *ApJL*, 836, L10
- Huang, S. Y., & Sahraoui, F. 2019, *ApJ*, 876, 138
- Huang, S. Y., Sahraoui, F., Andrés, N., et al. 2021a, *ApJL*, 909, L7
- Huang, S. Y., Wang, Q. Y., Sahraoui, F., et al. 2020b, *ApJ*, 891, 159
- Huang, S. Y., Xiong, Q. Y., Yuan, Z. G., et al. 2021b, *JGRA*, 126, e2020JA028780
- Huang, S. Y., Zhang, J., Sahraoui, F., et al. 2020c, *ApJL*, 898, L18
- Huang, S. Y., Zhang, J., Sahraoui, F., et al. 2020d, *ApJL*, 897, L3
- Huang, S. Y., Zhou, M., Sahraoui, F., et al. 2010, *JGRA*, 115, A12211
- Huang, S. Y., Zhou, M., Sahraoui, F., et al. 2012, *GeoRL*, 39, L11104
- Iroshnikov, P. S. 1963, *AZh*, 40, 742
- Kasper, J. C., Abiad, R., Austin, G., et al. 2016, *SSRv*, 204, 131
- Klein, K. G., Howes, G. G., & TenBerge, J. M. 2014, *ApJL*, 790, L20
- Kolmogorov, A. 1941, *DoSSR*, 30, 301
- Kraichnan, R. H. 1965, *PhFl*, 8, 1385
- Leamon, R. J., Matthaeus, W. H., Smith, C. W., & Wong, H. K. 1998, *JGR*, 103, 4775
- Luo, Q. Y., & Wu, D. J. 2010, *ApJL*, 714, L138
- Malaspina, D. M., Ergun, R. E., Bolton, M., et al. 2016, *JGRA*, 121, 5088
- Matthaeus, W. H., & Goldstein, M. L. 1982, *JGR*, 87, 6011
- Meyrand, R., & Galtier, S. 2012, *PhRvL*, 109, 194501
- Meyrand, R., Squire, J., Schekochihin, A. A., & Dorland, W. 2021, *JPIPh*, 87, 535870301
- Oughton, S., Matthaeus, W., Wan, M., & Osman, K. 2015, *RSPTA*, 373, 20140152
- Podesta, J. J. 2009, *ApJ*, 698, 986
- Sahraoui, F., Belmont, G., Rezeau, L., et al. 2006, *PhRvL*, 96, 075002
- Sahraoui, F., Goldstein, M. L., Belmont, G., Canu, P., & Rezeau, L. 2010, *PhRvL*, 105, 131101
- Sahraoui, F., Goldstein, M. L., Robert, P., & Khotyaintsev, Y. V. 2009, *PhRvL*, 102, 231102
- Sahraoui, F., Hadid, L. Z., & Huang, S. Y. 2020, *RvMPP*, 4, 1
- Sahraoui, F., Huang, S. Y., Belmont, G., et al. 2013, *ApJ*, 777, 15
- Saito, S., Peter Gary, S., & Narita, Y. 2010, *PhPl*, 17, 122316
- Schekochihin, A. A., Cowley, S. C., Dorland, W., et al. 2009, *ApJS*, 182, 310
- Telloni, D., Carbone, F., Bruno, R., et al. 2019, *ApJ*, 887, 160
- Wang, T., He, J., Alexandrova, O., Dunlop, M., & Perrone, D. 2020, *ApJ*, 898, 91
- Wang, X., Tu, C., Marsch, E., He, J., & Wang, L. 2016, *ApJ*, 816, 15
- Zank, G. P., Nakanotani, M., Zhao, L. L., Adhikari, L., & Telloni, D. 2020, *ApJ*, 900, 115
- Zank, G. P., Zhao, L. L., Adhikari, L., et al. 2021, *PhPl*, 28, 080501
- Zhang, J., Huang, S. Y., He, J. S., et al. 2022, *ApJL*, 924, L21
- Zhao, J., Wang, T., Graham, D. B., et al. 2020a, *ApJ*, 890, 17
- Zhao, L. L., Zank, G. P., Adhikari, L., & Nakanotani, M. 2022, *ApJL*, 924, L5
- Zhao, L. L., Zank, G. P., Adhikari, L., et al. 2020b, *ApJ*, 898, 113
- Zhao, L. L., Zank, G. P., He, J. S., et al. 2021a, *A&A*, 656, A3
- Zhao, L. L., Zank, G. P., He, J. S., et al. 2021b, *ApJ*, 922, 188