



**HAL**  
open science

# Decrease of hospital- and community-acquired bloodstream infections due to *Streptococcus pneumoniae* and *Streptococcus pyogenes* during the first year of the COVID-19 pandemic: A time-series analysis in Paris region

Rishma Amarsy, Sandra Fournier, David Trystram, Catherine Monteil, Xavier Raynaud, Vincent Jarlier, Jérôme Robert

## ► To cite this version:

Rishma Amarsy, Sandra Fournier, David Trystram, Catherine Monteil, Xavier Raynaud, et al.. Decrease of hospital- and community-acquired bloodstream infections due to *Streptococcus pneumoniae* and *Streptococcus pyogenes* during the first year of the COVID-19 pandemic: A time-series analysis in Paris region. *American Journal of Infection Control*, 2022, 51 (4), pp.475-477. 10.1016/j.ajic.2022.09.002 . hal-03868704

**HAL Id: hal-03868704**

**<https://hal.science/hal-03868704v1>**

Submitted on 16 Jul 2024

**HAL** is a multi-disciplinary open access archive for the deposit and dissemination of scientific research documents, whether they are published or not. The documents may come from teaching and research institutions in France or abroad, or from public or private research centers.

L'archive ouverte pluridisciplinaire **HAL**, est destinée au dépôt et à la diffusion de documents scientifiques de niveau recherche, publiés ou non, émanant des établissements d'enseignement et de recherche français ou étrangers, des laboratoires publics ou privés.

Copyright

1 **Decrease of hospital- and community-acquired bloodstream infections due to**  
2 ***Streptococcus pneumoniae* and *Streptococcus pyogenes* during the first year of the**  
3 **COVID-19 pandemic: a time-series analysis in Paris region**

4  
5 **Rishma Amarsy<sup>1\*</sup>, Sandra Fournier<sup>2</sup>, David Trystram<sup>3</sup>, Catherine Monteil<sup>2</sup>, Xavier**  
6 **Raynaud<sup>4</sup>, Vincent Jarlier<sup>5</sup>, Jérôme Robert<sup>5</sup> on behalf of « la Collégiale de Bactériologie-**  
7 **Virologie-Hygiène de l'Assistance Publique-Hôpitaux de Paris »<sup>5</sup>**

8  
9 <sup>1</sup>Groupe hospitalo-universitaire APHP.Nord-Université de Paris, Site Lariboisière et Fernand  
10 Widal, Infection Prevention and Control Team and CIMI-Paris, Inserm U1135, Sorbonne  
11 Université, Paris, France

12 <sup>2</sup>Central Infection Control Team, Assistance Publique – hôpitaux de Paris, Paris, France

13 <sup>3</sup>Groupe hospitalo-universitaire APHP.Sorbonne Université, Site Pitié-Salpêtrière, Laboratoire  
14 de Bactériologie-Hygiène, Paris, France and Direction des Systèmes d'Information de  
15 l'Assistance Publique – hôpitaux de Paris, Paris

16 <sup>4</sup> Sorbonne Université, Université Paris-Cité, UPEC, IRD, CNRS, INRA, Institute of Ecology  
17 and Environmental Sciences, iEES Paris, Paris, France

18 <sup>5</sup>Groupe hospitalo-universitaire APHP.Sorbonne Université, Site Pitié-Salpêtrière, Laboratoire  
19 de Bactériologie-Hygiène and CIMI-Paris, Inserm U1135, Sorbonne Université, Paris, France

20 <sup>5</sup>Members of 'la Collégiale de Bactériologie-Virologie-Hygiène de l'Assistance Publique,  
21 Hôpitaux de Paris' are given at the end of the article

22

23 **\*Corresponding author:** Rishma Amarsy

24 **Corresponding author email:** rishma.amarsy@aphp.fr

25

26 **Keywords:** COVID-19, *Streptococcus pneumoniae*, *Streptococcus pyogenes*, bloodstream  
27 infection incidence

28 **Competing interests:** The authors declare that they have no competing interests.

29

30

31

32 **HIGHLIGHTS**

- 33 • The impact of the COVID-19 pandemic on invasive infections due to *Streptococcus*  
34 *pneumoniae* and *Streptococcus pyogenes* was assessed in a group of 25 university hospitals of  
35 Paris area.
- 36 • Monthly bloodstream infections incidence rates decreased for the two pathogens during  
37 the two COVID-19 lockdown periods of 2020 after 2018 and 2019 steady states.
- 38 • Containment policies, including social distancing, masking and hand hygiene  
39 strengthening in the community and the hospital settings are likely to reduce bloodstream  
40 infections due to these pathogens.

41

42 **MAIN TEXT**

43 During the COVID-19 pandemic, several containment measures have been implemented to  
44 limit the spread of the virus. The diversity of these measures has been previously described and  
45 their impact on the COVID-19 pandemic have been largely commented [1]. Nevertheless, data  
46 on the collateral effects [2] on such large containment measures on the transmission of  
47 pathogens other than the one causing the pandemic should be further analyzed.

48 Measures adopted to mitigate the COVID-19 pandemic, i.e., masking, social distancing, and  
49 strengthening of hand hygiene, are also those implemented in hospitals and in the community  
50 to control pathogens with droplet transmission. *Streptococcus pneumoniae* and *Streptococcus*  
51 *pyogenes* are pathogens with nasopharyngeal carriage and known to be mainly transmitted via  
52 droplets. Both have the ability to cause invasive diseases, including bloodstream infections  
53 (BSIs) [3,4]. Hence, COVID-19 prevention could favorably impact the epidemiology of these  
54 infections.

55 On the opposite, coughing during COVID-19 infection worsened the spread of those bacteria  
56 and super-infections are reported in COVID-19 patients, particularly with *S. pneumoniae* [5].

57 In addition, inpatients accumulate risk factors for hospital-acquired infections (invasive support  
58 and monitoring, corticosteroid therapy) [6]. Therefore, we sought to analyze the impact of the  
59 COVID-19 pandemic on the epidemiology of BSIs due to *S. pneumoniae* and *S. pyogenes* in a  
60 large public multihospital institution in the Paris region.

61  
62 Assistance Publique - Hôpitaux de Paris (APHP) is a consortium of 37 university-hospitals  
63 (20,000 beds) covering the Paris region (12 million inhabitants). This work was conducted in a  
64 subgroup of 25 hospitals (70% of the beds) using the same laboratory information system (LIS),  
65 allowing standardized data extraction of BSIs. The study covers 2020, the first year of COVID-  
66 19 pandemic and, as control, the years 2018 and 2019. A blood culture set (BC set) was defined  
67 as the combination of one aerobic and one anaerobic blood culture bottles drawn through the  
68 same puncture. Only the first BSI episode with the same microorganism for a given patient was  
69 included in the study when several BC sets were positive. Blood cultures drawn in the first two  
70 days of admission were considered community-acquired and those >48 hours after admission,  
71 hospital-acquired. All laboratories participate in the national accreditation process “COFRAC”  
72 with internal and external quality controls and use the EUCAST European quality standards for  
73 drug susceptibility testing.

74 Time-series modelling was used to quantify changes in incidence rates of BSIs during 2018 and  
75 2019. The model was calculated with a linear trend and seasonal components to account for  
76 possible changes in the incidence over time, independent of the pandemic. The predicted values  
77 for 2020 were calculated with 95% prediction intervals. The validity of the model was tested  
78 with Durbin-Watson and Shapiro-Wilk normality tests. All BSIs data were extracted  
79 anonymously following current French rules.

80 We observed a global decrease of BSIs incidence rates in 2020 by 34% for *S. pneumoniae* and  
81 28% for *S. pyogenes* as compared to 2018 and 2019. The temporal course showed a substantial

82 reduction in the monthly incidence rates of BSIs between March and May 2020, coinciding  
83 with the implementation of COVID-19 first drastic containment measures (Figure 1). At the  
84 end of the lockdown, there was a slight increase in BSI incidence rates, but rates remained lower  
85 than expected according to the two previous years. During the second lockdown, at the end of  
86 the year 2020, containment measures were more relaxed than in the first quarter (back to office  
87 work, opened schools). Concomitantly, there was a small increase in BSI rates, remaining lower  
88 than predicted values during the winter season, and no classical seasonal peak for *S.*  
89 *pneumoniae* (Figure 1). All rates observed during 2020 remained below predicted values of the  
90 model and during lockdowns, several rates were even lower than the predicted 95% lower  
91 limits. The decrease in the BSIs incidence in 2020 remained significant after stratification on  
92 the origin of the BSIs, i.e., community- or hospital- acquired.

## 93 **DISCUSSION**

94 We witnessed a decrease in both community- and hospital-acquired bloodstream infections due  
95 to *S. pneumoniae* and *S. pyogenes* concomitantly to the large implementation of preventive  
96 measures to curb the COVID-19 pandemic. These findings are in line with several reports based  
97 on either the whole population with data issued from nationwide surveillance systems [7,8], or  
98 on inpatients such as the pediatric population [9,10]. On the opposite, one study reported an  
99 increase of such infections during intervals when COVID-19 incidence slowed down, that is to  
100 date not clearly explained [11].

101 The issue of poor case ascertainment and notification could be raised to explain the decreases  
102 while countries were responding to the surge of COVID-19. However, we studied  
103 *S. pneumoniae* and *S. pyogenes* invasive infections diagnosed in the hospital setting, where an  
104 increase in the number of blood cultures collected, in particular during the first wave has been  
105 reported [12]. Hence, the reductions by 34% for *S. pneumoniae* and 28% for *S. pyogenes*  
106 observed in 2020 in our facilities are likely to be consistent with actual decreases in incidence

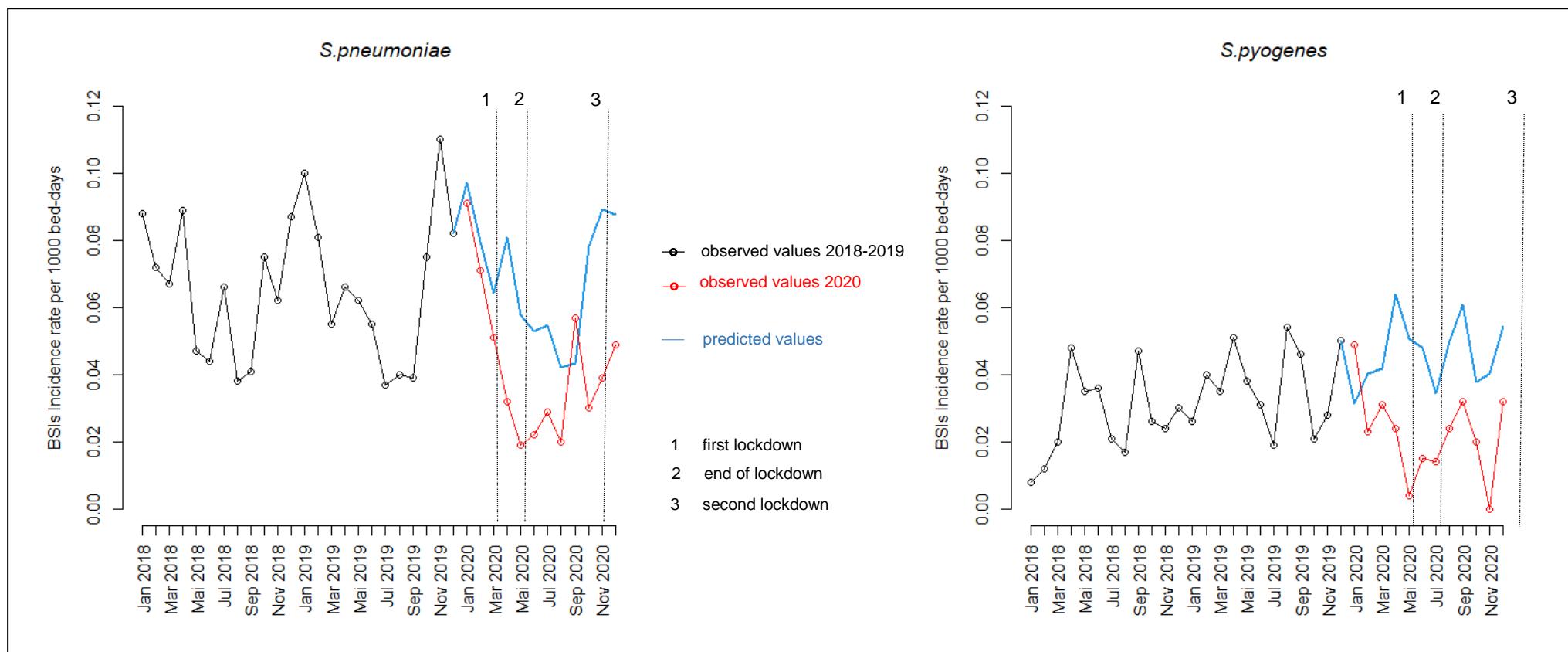
107 rates. These reductions are probably linked to basic COVID-19 bundle prevention procedures.  
108 Regarding hospital-acquired cases, the consumption of alcohol-based hand products was  
109 multiplied by 2.5 in 2020 in the 25 participating hospitals, which likely has an impact on cross  
110 transmission. In addition, universal masking adopted during the pandemic was not  
111 recommended in hospitals before that period, and besides performing high-risk invasive  
112 procedures, facemasks were only recommended in specific situations such as childbirth to  
113 prevent *S. pyogenes* transmission, or for all droplet-generating procedures. In the community,  
114 similar precautions were widely adopted and the adherence to those were enforced by lockdown  
115 periods, which decreases opportunities for transmission.

116 The major strength of the present study is that it covers a large regional population and allowed  
117 to distinguish community- from hospital-acquired cases. Nevertheless, we had no access to  
118 comprehensive medical records preventing analysis of data at the individual level (COVID-19  
119 status, prior hospitalization, antibiotic use). Similarly, analysis of rates of lower respiratory tract  
120 infections were not feasible because it requires clinical and radiological data for interpretation.

121 The containment measures implemented during the COVID-19 pandemic appear to have  
122 positively impacted other infections transmitted by the same routes, including influenza.  
123 Decreasing such infections should conduct to prevent antibiotic use, which is a worldwide  
124 priority. However, the highly restrictive measures may not be accepted outside a health crisis.  
125 Therefore, health authorities should promote lighter hygienic measures that are acceptable on  
126 the long term to influence public health by decreasing transmission of respiratory pathogens.  
127

128 Figure 1. Impact of containment measures on monthly incidence rates per 1000 bed-days of BSIs due to *S. pneumoniae* and *S. pyogenes*.  
 129 Red lines represent observed data; blue lines represent model estimates based on observed data. The start and the end of the containment measures  
 130 are indicated by a vertical dashed line.

131  
 132  
 133





## References

- 134  
135  
136 [1] Ethical and Legal Considerations in Mitigating Pandemic Disease: Workshop  
137 Summary. Washington, D.C.: National Academies Press; 2007.  
138 <https://doi.org/10.17226/11917>.
- 139 [2] Cheng VC-C, Wong S-C, So SY-C, Chen JH-K, Chau P-H, Au AK-W, et al.  
140 Decreased Antibiotic Consumption Coincided with Reduction in Bacteremia Caused by  
141 Bacterial Species with Respiratory Transmission Potential during the COVID-19 Pandemic.  
142 *Antibiotics* 2022;11:746. <https://doi.org/10.3390/antibiotics11060746>.
- 143 [3] Drijkoningen JJC, Rohde GGU. Pneumococcal infection in adults: burden of disease.  
144 *Clin Microbiol Infect* 2014;20:45–51. <https://doi.org/10.1111/1469-0691.12461>.
- 145 [4] Carapetis JR, Steer AC, Mulholland EK, Weber M. The global burden of group A  
146 streptococcal diseases. *Lancet Infect Dis* 2005;5:685–94. [https://doi.org/10.1016/S1473-3099\(05\)70267-X](https://doi.org/10.1016/S1473-3099(05)70267-X).
- 148 [5] Westblade LF, Simon MS, Satlin MJ. Bacterial Coinfections in Coronavirus Disease  
149 2019. *Trends Microbiol* 2021;29:930–41. <https://doi.org/10.1016/j.tim.2021.03.018>.
- 150 [6] Ripa M, Galli L, Poli A, Oltolini C, Spagnuolo V, Mastrangelo A, et al. Secondary  
151 infections in patients hospitalized with COVID-19: incidence and predictive factors. *Clin*  
152 *Microbiol Infect* 2021;27:451–7. <https://doi.org/10.1016/j.cmi.2020.10.021>.
- 153 [7] Brueggemann AB, Jansen van Rensburg MJ, Shaw D, McCarthy ND, Jolley KA,  
154 Maiden MCJ, et al. Changes in the incidence of invasive disease due to *Streptococcus*  
155 *pneumoniae*, *Haemophilus influenzae*, and *Neisseria meningitidis* during the COVID-19  
156 pandemic in 26 countries and territories in the Invasive Respiratory Infection Surveillance  
157 Initiative: a prospective analysis of surveillance data. *Lancet Digit Health* 2021;3:e360–70.  
158 [https://doi.org/10.1016/S2589-7500\(21\)00077-7](https://doi.org/10.1016/S2589-7500(21)00077-7).
- 159 [8] Steens A, Knol MJ, Freudenburg-de Graaf W, de Melker HE, van der Ende A, van  
160 Sorge NM. Pathogen- and Type-Specific Changes in Invasive Bacterial Disease  
161 Epidemiology during the First Year of the COVID-19 Pandemic in The Netherlands.  
162 *Microorganisms* 2022;10:972. <https://doi.org/10.3390/microorganisms10050972>.
- 163 [9] McNeil JC, Flores AR, Kaplan SL, Hulten KG. The Indirect Impact of the SARS-  
164 CoV-2 Pandemic on Invasive Group a *Streptococcus*, *Streptococcus pneumoniae* and  
165 *Staphylococcus Aureus* Infections in Houston Area Children. *Pediatr Infect Dis J*  
166 2021;40:e313–6. <https://doi.org/10.1097/INF.0000000000003195>.
- 167 [10] Skurnik D, Rybak A, Yang DD, Pons S, Guedj R, Levy C, et al. Unexpected Lessons  
168 from the Coronavirus Disease 2019 Lockdowns in France: Low Impact of School Opening on  
169 Common Communicable Pediatric Airborne Diseases. *Clin Infect Dis* 2021;73:e2830–2.  
170 <https://doi.org/10.1093/cid/ciaa1899>.
- 171 [11] Khongyot T, Moriyasu T. Invasive Pneumococcal Disease diminish during the  
172 coronavirus disease 2019 in Japan between 2019 and 2022. *Int J Infect Dis*  
173 2022;S1201971222003332. <https://doi.org/10.1016/j.ijid.2022.05.064>.
- 174 [12] Amarsy R, Trystram D, Cambau E, Monteil C, Fournier S, Oliary J, et al. Surging  
175 bloodstream infections and antimicrobial resistance during the first wave of COVID–19: a  
176 study in a large multihospital institution in the Paris region. *Int J Infect Dis* 2022;114:90–6.  
177 <https://doi.org/10.1016/j.ijid.2021.10.034>.
- 178  
179  
180

181 **Appendices**

182 **Members of the Collégiale de Bactériologie – Virologie – Hygiène (CBVH):** Guillaume  
183 Arlet, Laurence Armand Lefevre, Alexandra Aubry, Laurent Belec, Béatrice Bercot, Stéphane  
184 Bonacorsi, Vincent Calvez, Emmanuelle Cambau, Etienne Carbonnelle, Stéphane Chevaliez,  
185 Jean-Winoc Decousser, Constance Delaugerre, Diane Descamps, Florence Doucet-Populaire,  
186 Jean-Louis Gaillard, Antoine Garbarg-Chenon, Elyanne Gault, Jean-Louis Herrmann, Vincent  
187 Jarlier, Jérôme Le Goff, Jean-Christophe Lucet, Jean-Luc Mainardi, Anne-Geneviève  
188 Marcellin, Laurence Morand-Joubert, Xavier Nassif, Jean-Michel Pawlotsky, Jérôme Robert,  
189 Anne-Marie Roque Afonso, Martin Rottman, Christine Rouzioux, Flore Rozenberg, François  
190 Simon, Nicolas Veziris, David Skurnik, Jean-Ralph Zahar, Guilene Barnaud, Typhaine Billard  
191 Pomares, Gaëlle Cuzon, Dominique Decré, Alexandra Doloy, Jean-Luc Donay, Laurence  
192 Drieux-Rouzet, Isabelle Durand, Agnès Ferroni, Vincent Fihman, Nicolas Fortineau, Camille  
193 Gomart, Nathalie Grall, Christelle Guillet Caruba, Françoise Jaureguy, Valérie Lalande, Luce  
194 Landraud, Véronique Leflon, Patricia Mariani, Liliana Mihaila, Didier Moissenet, Latifa  
195 Noussair, Isabelle Podglajen, Isabelle Poilane, Hélène Poupet, Emilie Rondinaud, Valérie  
196 Sivadon Tardy, David Trystram, Charlotte Verdet, Emmanuelle Vigier, Sophie Vimont  
197 Billarant

198

199 **Declarations**

- 200 • Ethics approval and consent to participate: Data were extracted anonymously following  
201 current French rules
- 202 • Consent for publication: All patients admitted to APHP hospitals are informed about  
203 the potential use of data for research purpose.

- 204 • Acknowledgements : The authors thank the members of the Collégiale de Bactériologue  
205 – Virologie – Hygiène (CBVH) whose daily work made possible to obtain quality data  
206 in each of the 25 participating hospitals

207