



**HAL**  
open science

## Treating mares with the long-acting kisspeptin analog C6 increases circulating gonadotropins but does not trigger ovulation

Flavie Derouin-Tochon, Didier Lomet, Vincent Robert, Fabrice Reigner, Philippe Barrière, Thierry Blard, Amandine Gesbert, Vishwanatha Thimmalapura Marulappa, Elise Hommet, Caroline Decourt, et al.

### ► To cite this version:

Flavie Derouin-Tochon, Didier Lomet, Vincent Robert, Fabrice Reigner, Philippe Barrière, et al.. Treating mares with the long-acting kisspeptin analog C6 increases circulating gonadotropins but does not trigger ovulation. *Agriculture*, 2022, 12 (11), pp.1846. 10.3390/agriculture12111846 . hal-03862471

**HAL Id: hal-03862471**

**<https://hal.science/hal-03862471>**

Submitted on 21 Nov 2022

**HAL** is a multi-disciplinary open access archive for the deposit and dissemination of scientific research documents, whether they are published or not. The documents may come from teaching and research institutions in France or abroad, or from public or private research centers.



L'archive ouverte pluridisciplinaire **HAL**, est destinée au dépôt et à la diffusion de documents scientifiques de niveau recherche, publiés ou non, émanant des établissements d'enseignement et de recherche français ou étrangers, des laboratoires publics ou privés.



Distributed under a Creative Commons Attribution 4.0 International License

## Article

# Treating Mares with the Long-Acting Kisspeptin Analog C6 Increases Circulating Gonadotropins but Does Not Trigger Ovulation

Flavie Derouin-Tochon <sup>1</sup>, Didier Lomet <sup>1</sup>, Vincent Robert <sup>1</sup>, Fabrice Reigner <sup>2</sup>, Philippe Barrière <sup>2</sup>, Thierry Blard <sup>2</sup>, Amandine Gesbert <sup>2</sup>, Vishwanatha Thimmalapura Marulappa <sup>3</sup>, Elise Hommet <sup>1</sup>, Caroline Decourt <sup>1,†</sup> , Vincent Hellier <sup>1</sup>, Vincent Aucagne <sup>4</sup> , Anne Duittoz <sup>1</sup> and Massimiliano Beltramo <sup>1,\*</sup>

<sup>1</sup> Physiologie de la Reproduction et des Comportements (PRC) UMR0085 INRAE, CNRS, IFCE, Université de Tours, PRC, F-37380 Nouzilly, France

<sup>2</sup> Unité Expérimentale de Physiologie Animale de l'Orfrasière (UEPAO), INRAE, 37380 Nouzilly, France

<sup>3</sup> Cell and Chemical Biology, Leiden University Medical Center, 2333 ZC Leiden, The Netherlands

<sup>4</sup> Centre de Biophysique Moléculaire (CNRS UPR 4301), CEDEX 1, F-45071 Orléans, France

\* Correspondence: massimiliano.beltramo@inrae.fr; Tel.: +33-(0)2-47-42-73-60

† Current address: Centre for Neuroendocrinology, Department of Anatomy, School of Medical Sciences, University of Otago, Dunedin 9054, New Zealand.

**Abstract:** The role of the neuropeptide kisspeptin (Kp) in mammalian reproduction is well established. Nevertheless, species-specific differences exist. In the horse, administration of the shortest endogenous Kp isoform, Kp10, is unable to trigger ovulation even though it increases plasma gonadotropins concentrations. To check if this issue would be dependent on Kp10 short half-life, we tested two degradation-resistant Kp analogs. The first analog was based on the equine Kp10 sequence (eC6), the second on the ovine Kp10 sequence (oC6). During the non-breeding season, a dose of 150 nmol/mare of either molecule had no significant effect on LH concentration, while oC6 provided a better stimulation of FSH than eC6 ( $p = 0.01$ ). Furthermore, oC6 was more effective when injected intravenously than intramuscularly. Due to its best pharmacodynamics profile, oC6 (150 nmol/mare) was probed for ovulation induction during the breeding season. The molecule was injected during the preovulatory phase when the follicle diameter ranged from 34 to 37 mm and a uterine oedema was observed. oC6 consistently increased the total amount of gonadotropins released (FSH,  $p = 0.01$  and LH,  $p = 0.02$ ). However, as shown by transrectal ultrasonography and plasma progesterone levels, oC6 did not anticipate ovulation compared to the control group. Our results provide further evidence of the peculiar reproductive endocrinology of the mare but leave open questions regarding the exact role of Kp in the control of ovulation and breeding in the mare, which we attempt to identify and discuss.

**Keywords:** kisspeptin; ovulation; mare; FSH; C6



**Citation:** Derouin-Tochon, F.; Lomet, D.; Robert, V.; Reigner, F.; Barrière, P.; Blard, T.; Gesbert, A.; Marulappa, V.T.; Hommet, E.; Decourt, C.; et al. Treating Mares with the Long-Acting Kisspeptin Analog C6 Increases Circulating Gonadotropins but Does Not Trigger Ovulation. *Agriculture* **2022**, *12*, 1846. <https://doi.org/10.3390/agriculture12111846>

Academic Editor: Milan Shipka

Received: 1 September 2022

Accepted: 30 October 2022

Published: 4 November 2022

**Publisher's Note:** MDPI stays neutral with regard to jurisdictional claims in published maps and institutional affiliations.



**Copyright:** © 2022 by the authors. Licensee MDPI, Basel, Switzerland. This article is an open access article distributed under the terms and conditions of the Creative Commons Attribution (CC BY) license (<https://creativecommons.org/licenses/by/4.0/>).

## 1. Introduction

The neuropeptide kisspeptin (Kp) along with gonadotropin releasing hormone (GnRH), gonadotropins, and sex steroids shapes, the physiological mechanisms implicated in mammalian reproduction. The general organization and the overarching principles of this so-called hypothalamo-pituitary-gonadal axis are broadly conserved. However, several species do display peculiarities, which seemingly set them apart. The horse belongs to this category. These peculiarities complicate the management of horse reproduction and call for the development of novel tools and methodologies to control breeding.

In the horse, at odds with what is observed in most mammals, the luteinizing hormone (LH) surge reaches peak levels one day after ovulation, rather than preceding it [1]. Furthermore, in contrast to what is observed in woman [2] and ewe [3], administration

of Kp, under different physiological states and using various dosing regimens, failed to trigger follicle maturation and ovulation [4–7].

Up to now, attempts to induce ovulation in mares were based on the use of the shortest native form of Kp: Kp10 (last C-term, 10 amino acids of the peptide). Single injection, multiple injections, as well as perfusion of various durations and doses were tested. Even though Kp was able to stimulate gonadotropins release, none of the approaches triggered ovulation [4,5]. Several reasons have been adduced to explain this lack of effect. A potential explanation may be that the sequence of the equine Kp10 (eKp10) that was used in these experiments and bears one amino acid substitution in position two compared to Kp10 in mouse or human is less effective in stimulating GnRH secretion. This may reflect decreased activity of the molecule when bound to its cognate receptor, KISS1R. A second and complementary explanation may pertain to the half-life of Kp10, which is known to be extremely short, and to the possibility that Kp10 isoform may not be the most prominent *in vivo*. It might be that longer isoforms have increased half-life, hence prolonged action at KISS1R. Therefore, directly pitting the impact of eKp10 against that of other Kp10 and testing the impact of degradation-resistant analogs of Kp are both valid approaches to further our understanding of mare neuroendocrinology of breeding, which might further result in the development of useful molecules for breeding control.

Recently we have designed a Kp analog based on the sequence of the ovine Kp10 (oKp10), which is strictly conserved in most non-primate mammals with few exceptions, including the horse. This analog, called C6, showed improved pharmacological properties compared to native oKp10: increased potency, improved resistance to degradation, and more prolonged *in vivo* action [8]. We have shown that this molecule synchronizes and triggers ovulations in small ruminants [8,9]. Grounded in these observations, we decided to design a similar analog based on the eKp10 sequence (eC6) and to compare its effect with that of the analog based on oKp10 sequence (oC6) in the mare. Our aims were to establish, in the mare, whether these Kp10-derived molecules have the same efficacy when their sequence is based on either eKp10 or oKp10, and to take advantage of the improved pharmacological properties of C6 to test whether a prolonged action could indeed effectively increase the release of gonadotropins and trigger ovulation.

Supporting the hypothesis that eKp10 sequence is less active, oC6 stimulated gonadotropins release better than eC6. Nevertheless, oC6 failed to trigger ovulation during the breeding season, which confirms that stimuli required to elicit ovulation in the mare might differ from those required in other domestic mammals.

## 2. Materials and Methods

### 2.1. Synthesis of Kp10 Analogs

eC6 and oC6 were synthesized following a protocol similar to the one described earlier for oC6 [9]. Fmoc-based Solid-Phase Peptide Synthesis (SPPS) was carried out on a Prelude synthesizer from Gyros-Protein Technologies. Syntheses were performed at a 25  $\mu\text{mol}$  scale on Rink Amide ChemMatrix resin. Protected amino acids (0.25 mmol, 10 equiv.) were coupled using HCTU (98 mg, 0.238 mmol, 9.5 equiv.) and *i*Pr<sub>2</sub>NEt (87  $\mu\text{L}$ , 0.5 mmol, 20 equiv.) in NMP (3 mL) for 30 min. Capping of potential unreacted amine groups was achieved by treatment with acetic anhydride (143  $\mu\text{L}$ , 1.51 mmol, 60 equiv.), *i*Pr<sub>2</sub>NEt (68  $\mu\text{L}$ , 0.39 mmol, 15.5 equiv.) and HOBt hydrate (6 mg, 0.044 mmol, 1.8 equiv.) in NMP (3 mL) for 7 min. Fmoc group was removed by three successive treatments with 20% piperidine in NMP (3 mL) for 3 min. Standard side-chain protecting groups were used for N $\alpha$ -Fmoc amino acids: Arg (Pbf), Arg (Me,Pbf), Asn (Trt), Ser (tBu), Trp (Boc) and Tyr (tBu). Isoglutamate residues (iGlu) were incorporated through the coupling of Fmoc-Glu-OtBu. N-terminal palmitamide (Palm) were introduced by coupling hexadecanoic acid using a slightly modified protocol, differing in the solvent used (a 3:1 dichloromethane/NMP mixture), and the duration (2 h). Leu<sub>8</sub> (Kp10 numbering) was introduced through the coupling of (S)-2-azido-4-methylpentanoic acid (N<sub>3</sub>Leu-OH) [10] and the triazole heterocycle used as a Gly<sub>7</sub>-Leu<sub>8</sub> peptide bond surrogate ( $\Psi$  [Tz]) was generated through solid-supported copper-catalyzed

azide/alkyne cycloaddition (CuAAC): N-Fmoc propargylamine [11] (0.1 mmol, 4 equiv.) and CuBr.Me2S (21 mg, 0.1 mmol, 4 equiv.) were dissolved in NMP (2.5 mL) under an argon atmosphere. After addition of *i*Pr<sub>2</sub>NEt (17  $\mu$ L, 0.4 mmol, 4 equiv.), the mixture was transferred into a syringe fitted with a frit containing azido-peptide resin (0.025 mmol.) swollen in NMP. The green suspension was stirred by syringe rotation for 18 h at room temperature and the resin was washed successively with NMP, CH<sub>2</sub>Cl<sub>2</sub>, 1 M pyridine hydrochloride in 95:5 CH<sub>2</sub>Cl<sub>2</sub>/MeOH, CH<sub>2</sub>Cl<sub>2</sub> and DMF. The crude triazolo-lipopeptides were released from the resin with TFA/H<sub>2</sub>O/*i*Pr<sub>3</sub>SiH/phenol, 87.5/5/2.5/5 for 3 h, and the peptide was precipitated by ten-fold dilution into an ice-cold 1:1 diethyl ether/petroleum ether mixture, recovered by centrifugation, and washed 3 times with diethyl ether. The crude peptides were purified by RP-HPLC (LaChromElite system equipped with a Nucleosil C18 column (300 Å, 5  $\mu$ m, 250  $\times$  10 mm, 3 mL min<sup>-1</sup> flow rate). HPLC analyses were carried out on a Chromaster system equipped with a chromolith High Resolution RP-18e column (150 Å, 10  $\times$  4.6 mm, 3 mL·min<sup>-1</sup> flow rate). Elution solvents A and B were 0.1% TFA in H<sub>2</sub>O and 0.1% TFA in MeCN, respectively. MS analyses were carried out on a single quadrupole Agilent 6120 mass spectrometer (ESI + mode). The experimental (obs.) and calculated (calcd.) *m/z* values correspond either to the [M + H]<sup>+</sup> monoisotopic ions or to the [M + 2H]<sup>2+</sup> or [M + 2H]<sup>3+</sup> average masses. Purified peptides were quantified by UV spectrophotometry at  $\lambda$  = 280 nm for activity tests, using the reported molar absorption coefficients:  $\epsilon_{280}$  (Trp) = 5500 L·mol<sup>-1</sup>·cm<sup>-1</sup>,  $\epsilon_{280}$  (Tyr) = 1490 L·mol<sup>-1</sup>·cm<sup>-1</sup> [12].

## 2.2. Characterization of Analogs

**oC6:** Palm-iGlu-<sup>1</sup>Tyr-Asn-Trp-Asn-Ser-Phe-GlyΨ [Tz] Leu-Arg (Me)-<sup>10</sup>Tyr-NH<sub>2</sub>  
HPLC purification: 57% B (isocratic) over 30 min, tR = 14.0 min.  
HPLC analysis gradient: 45–90% B over 5 min, tR = 3.29 min.  
MS: [M + H]<sup>+</sup> calcd. for C<sub>86</sub>H<sub>123</sub>N<sub>20</sub>O<sub>18</sub>: 1723.9, obs.: 1723.8; [M + 2H]<sup>2+</sup> calcd. for C<sub>86</sub>H<sub>124</sub>N<sub>20</sub>O<sub>18</sub>: 863.0, obs.: 862.8; [M + 3H]<sup>3+</sup> calcd. for C<sub>86</sub>H<sub>125</sub>N<sub>20</sub>O<sub>18</sub>: 575.7, obs.: 575.4.  
Characterization data are consistent to those previously reported [9].  
**eC6:** Palm-iGlu-<sup>1</sup>Tyr-Arg-Trp-Asn-Ser-Phe-GlyΨ [Tz] Leu-Arg (Me)-<sup>10</sup>Tyr-NH<sub>2</sub>  
HPLC purification gradient: 50–90% B over 20 min, tR = 14.0 min.  
HPLC analysis gradient: 50–90% B over 5 min, tR = 2.23 min.  
MS: [M + H]<sup>+</sup> calcd. for C<sub>88</sub>H<sub>129</sub>N<sub>22</sub>O<sub>17</sub>: 1766.0, obs.: 1766.0; [M + 2H]<sup>2+</sup> calcd. for C<sub>88</sub>H<sub>130</sub>N<sub>22</sub>O<sub>17</sub>: 884.1, obs.: 883.8; [M + 3H]<sup>3+</sup> calcd. for C<sub>88</sub>H<sub>131</sub>N<sub>22</sub>O<sub>17</sub>: 589.7, obs.: 589.5.

## 2.3. Calcium Mobilization Assay

To assess the potency and efficacy of the C6 analogs, a HEK-293 cell line stably transfected with hKISS1R and a Ca<sup>2+</sup> mobilization assay previously described [13] were used. Briefly, cells were grown in DMEM (with GlutaMAX, high glucose, and without pyruvate), 10% fetal calf serum, 1% penicillin, 1% streptomycin, 200  $\mu$ g·mL<sup>-1</sup> Geneticin, and HEPES (25 mM). The dynamics of intracellular Ca<sup>2+</sup> mobilization were monitored using Fluo4 NW Ca<sup>2+</sup> assay kit. Cells were plated 48 h before the experiment into 96-well blackplate (Dutscher, Brumath, France) at a density of 40,000 cells/well. On the day of the experiment, test compounds were diluted from stock solution in nonbinding plates (VWR, Strasbourg, France) to 20 $\times$  the final desired concentration (ranging from 1 pM to 1  $\mu$ M). Basal fluorescence was measured 5 times at 7 s interval with a plate reader (PolarStar Optima, BMG Labtech). Immediately after basal reading, test compounds were added to each well and intracellular Ca<sup>2+</sup> dynamics monitored for 7 min. To generate concentration activity curves, mean basal fluorescence was subtracted to the value obtained after stimulation. The area under the curve (AUC) was calculated and plotted against concentrations. Data were fitted to a sigmoid curve generated with GraphPad Prism 5, and the EC<sub>50</sub> was automatically calculated.

#### 2.4. Animals

All experiments with mares were conducted in accordance with the French national law (authorizations 37–118 and G 37-175-2 of the French Ministry of Agriculture) implementing the European Communities Council Directive 86/609/EEC and validated by the local Animal Ethics Committee (File numbers: 201907251345605 and 2019101117278451). Experiments were performed using adult (4–16 yr; 200–350 kg) Welsh pony mares from the UEPAO-INRAE (Unité Expérimentale PAO, INRAE, 2018. Animal Physiology Experimental Facility, DOI: 10.15454/1.5573896321728955E12) herd of Nouzilly, France (latitude 47° N). Animals were kept indoors in groups of two and exposed to the natural photoperiod. They were fed with wheat straw and given water ad libitum. A hay supplement was also provided twice daily.

#### 2.5. Intravenous Perfusion and Blood Collection

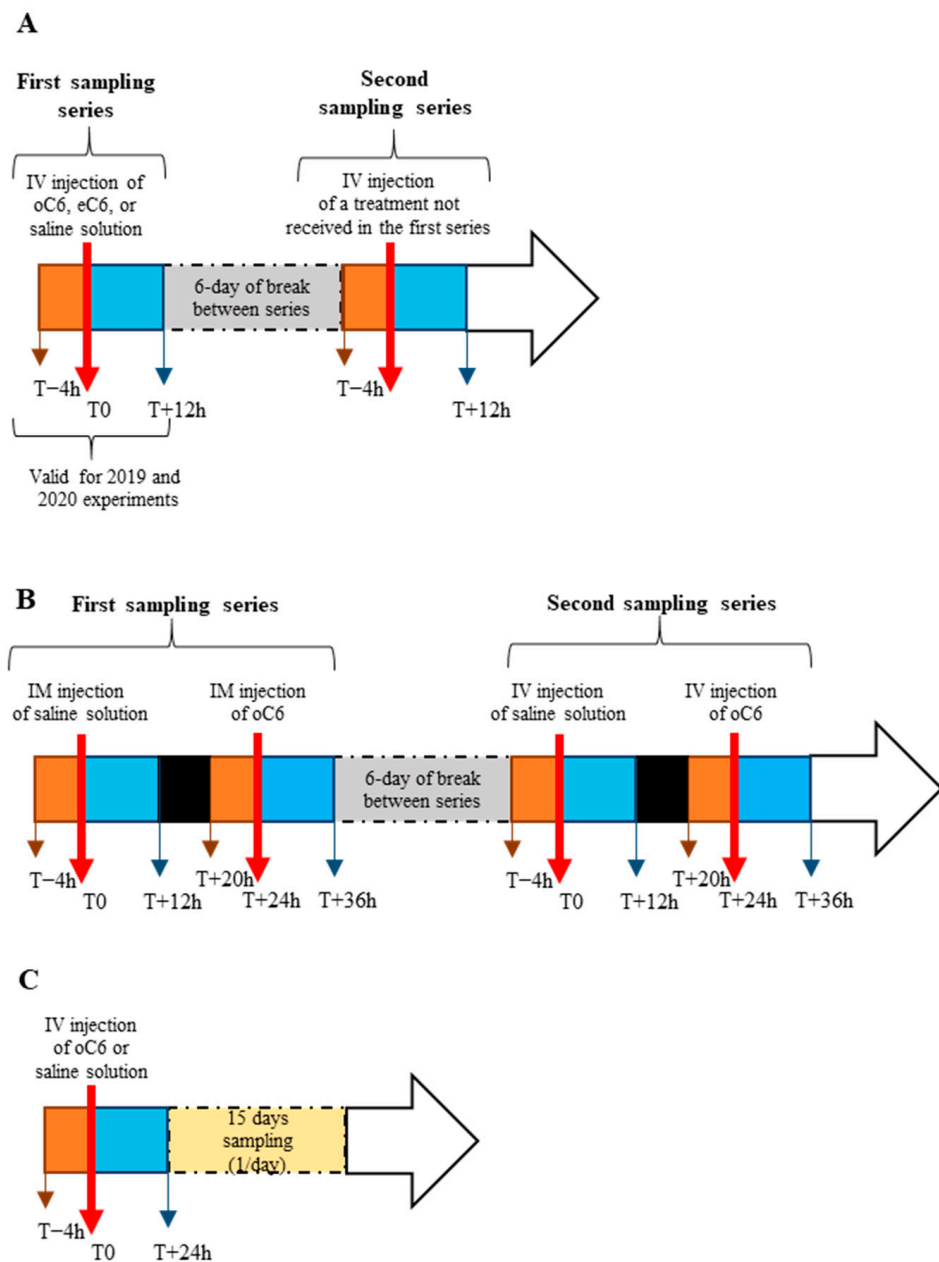
After application of cold spray on the neck, an intravenous silicone catheter (inner diameter 1.2 mm, outer diameter 2.0 mm; Nutricath S; Vygon; France) was introduced into the jugular vein and fixed with two stitches. For each sample, 3–5 mL of blood was collected and 2.5 mL of sterile saline solution (NaCl 0.9%; B | Braun; France) with heparin (0.1%; Héparine choray<sup>®</sup> 2500 UI/5 mL; Sanofi; France) was injected to flush the catheter. Blood samples for progesterone assay were collected using heparin vacutainers. Samples were centrifuged at 4000 rpm for 10 min at room temperature. Plasma was stored at –20 °C.

#### 2.6. Experimental Design

Experiments 1 and 2 were performed during the nonbreeding (anoestrus) season (December–January). A mare was considered acyclic when serum concentration of progesterone had been  $<1 \text{ ng}\cdot\text{mL}^{-1}$  for at least four consecutive weeks based on bi-weekly blood sampling. Experiment 3 was performed during the breeding season (May–June). During the breeding season, luteolysis was induced by intramuscular administration of 250 mg of prostaglandin F2 alpha (PGF2 $\alpha$ ) (cloprosténol, Estrumate<sup>®</sup>, Intervet, France), which was administered 5–6 days after ovulation. Three to five days after PGF2 $\alpha$  treatment, ovaries were scanned daily by ultrasonography to track follicular growth in order to decide the appropriate time to deliver oC6 or eC6. The ultrasonography was equipped with a 7.5 MHz linear probe (Exapad, ECM, Angoulême, France). See Figure 1A for a scheme of the experimental protocols.

Experiment 1 (non-breeding season). The goal of this experiment was to test the effect of an intravenous (iv) administration of either 150 nmol of oC6 or eC6 (0.259 and 0.265 mg respectively) on plasma gonadotropins level. Figure 2A,B report the structure of o and eC6. Eleven mares were used, and the experiment was performed in two consecutive years (2019, 2020). In 2019, 4 mares received an iv dose of 150 nmol of eC6 in 2 mL of saline solution. In 2020, 7 mares were used in two experiments separated by 6 days and received 150 nmol of eC6 diluted in 2 mL, 150 nmol of oC6 diluted in 2 mL, or 2 mL of vehicle (saline solution). Hence, in 2020, each mare received two of the three treatments: vehicle and eC6, vehicle and oC6, or eC6 and oC6. To summarize, 9 mares received the eC6, 5 received the oC6, and another 4 got the saline solution. Four hours before the treatment, blood samples were collected every hour. After treatment, blood was collected every 30 min during the first 8 h, then hourly until the end of the experiment.

Experiment 2 (non-breeding season). The aim of this experiment was to compare the effect of an iv versus an intramuscular (im) injection of 150 nmol of oC6. The experiment was performed on 7 mares and included two parts separated by a 6-day interval. Mares were divided into two groups. In the first part of the experiment, the first group received an iv administration of 2 mL of saline and twenty-four hours later, an iv injection of 150 nmol of oC6; the second group received an im administration of 2 mL of saline and twenty-four hours later an im injection of 150 nmol of oC6. In the second part of the experiment, treatments were switched between groups (see Figure 1B for a scheme of the experimental protocol).

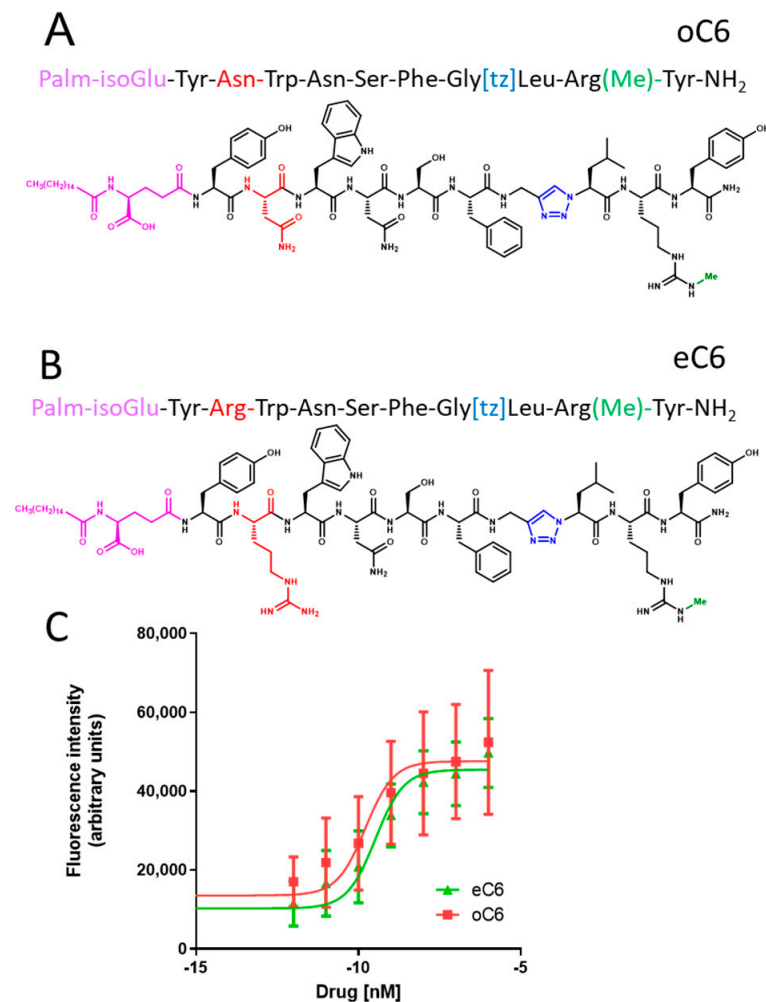


**Figure 1.** Schematic representation of protocols for experiment 1 (A), experiment 2 (B), and experiment 3 (C). Red arrows and T0 indicate the time of treatment administration. T+/-Xh indicate the time before or after the first administration of treatment during a sampling series. Orange boxes represent the sampling period before treatment administration. Black boxes represent a break in blood sampling. Grey boxes indicate the time intervening between two experimental series. The yellow box represents the time window of blood collection for P4 measurement.

Blood samples were collected every hour during four hours before treatment, and after treatment every 30 min during the first 8 h and every hour until the experiment ended, 12 h post-treatment.

Experiment 3 (breeding season). The aim of this experiment was to assess the effect of an iv administration of 150 nmol of oC6 during the pre-ovulatory phase. When a follicle diameter reached 34–37 mm in size and a uterine oedema was observed, mares were randomly assigned to one of two groups (n = 8/group): treated group (single intravenous injection of 150 nmol of oC6) and control group (intravenous injection of saline solution). Blood was sampled every hour during 4 h before injection, every 30 min during the first

8 h post-injection, every hour until 14 h post-injection, and every 3 h until the end of the experiment (24 h post-treatment). Blood samples were collected once daily during fifteen days post-treatment to assess progesterone plasma concentration (see Figure 1C for a scheme of the experimental protocol). Ovaries were scanned daily by ultrasonography to track follicular growth and ovulation.



**Figure 2.** Structures of oC6 and eC6 and comparison of their in vitro activity. The chemical structures of oC6 and eC6 are shown in panel (A,B), respectively. In red is shown the amino acid that differentiates the ovine and the equine Kp10 sequences. The other colored parts are the chemical modifications introduced into the Kp10 structure: in violet the N-palmitoylated- $\gamma$ -glutamate in the N-terminal position, in blue the triazole that substitutes the peptide bond between the Gly7 (Kp10 numbering) and the Leu8, and in green the methyl group that has been added to the Arg9. The graph (C) shows the concentration activity response of oC6 and eC6 in a calcium mobilization assay performed on HEK-293 cells stably transfected with the human KISS1R.

### 2.7. Hormone Assays

Plasma LH concentration was assayed by RIA following a procedure adapted from Guillaume et al. [14]. All samples were run in duplicates. Standards were prepared using plasma from a mare vaccinated against GnRH with an equine reference hormone (eLH, NHPP AFP 5130A; Dr. A.F. Parlow). The eLH was labelled with  $^{125}\text{I}$  (PerkinElmer NEN Radiochemicals) using Iodogen (Pierce, Interchim). The antibody (anti-LH AFP-240580; Dr. A.F. Parlow) was used at a final dilution of 1:440,000. The detection limit of the assay was  $0.25 \text{ ng}\cdot\text{mL}^{-1}$ . The mean intra- and interassay coefficients of variation (CV) for plasma containing  $3 \text{ ng}\cdot\text{mL}^{-1}$  of LH (corresponding to 50% bond) were 4% and 10%, respectively.

Plasma FSH concentration was assayed by sandwich ELISA. All samples were run in duplicates. Standards were prepared in a solution of DPBS, BSA 0.2%, Tween 20 0.01% using as a standard the eFSH CY558. Plates were coated and incubated overnight with 100  $\mu\text{L}$  of mouse monoclonal anti  $\alpha\text{CG}$  antibody (1:50,000; #a89A2-001 gift from Y. Combarrous; [15]) in carbonate/bicarbonate (pH = 10) buffer at +4  $^{\circ}\text{C}$ . Overcoating was performed by one hour incubation with 150  $\mu\text{L}$  of Seablock (UP40301A; Interchim) at room temperature (RT). One hundred microliters of plasma diluted to  $\frac{1}{2}$  in DPBS, BSA 0.2%, and Tween 20 0.01% were incubated overnight at 20  $^{\circ}\text{C}$ . Four washes of 2 min were performed after each incubation. Samples were incubated in rabbit polyclonal anti eFSH $\beta$  (100  $\mu\text{L}$ ; 1:40,000, #803 kind gift from Y. Combarrous; [15]) for one hour at RT. Incubation was terminated by the washing step followed by a second incubation for one hour at RT with a goat polyclonal anti rabbit IgG coupled to peroxidase (100  $\mu\text{L}$ , 1:40,000, Jackson Immunoresearch). Finally, an incubation of 20 min with the tetramethylbenzidine ELISA substrate standard solution (100  $\mu\text{L}$ , UP664780, Interchim) was performed at RT in the dark. The reaction was stopped by adding 50  $\mu\text{L}$  of sulphuric acid 2N. Absorbance was measured at 450 and 620 nm using a Sunrise instrument associated with the Magellan V5 software, and the difference between values was used for concentration calculation. The detection limit was 0.3  $\text{ng}\cdot\text{mL}^{-1}$ . The intra-assay CV for PBS containing 10  $\text{ng}\cdot\text{mL}^{-1}$  eFSH is 1.93%.

Plasma concentration of progesterone (P4) was measured by a sandwich ELISA following a procedure previously described [8]. The detection limit was 0.25  $\text{ng}\cdot\text{mL}^{-1}$ . The intra-assay CV for PBS containing 3.5  $\text{ng}\cdot\text{mL}^{-1}$  of P4 is of 3.7%.

## 2.8. Statistical Analyses

For repeated measures, the statistical analysis was performed using an ANOVA on repeated measures followed by a Dunnett multiple comparisons test when a difference was observed (Figures 3–7). The AUC was calculated with the software GraphPad V6 using the trapezoid rule and subtracting the basal value obtained by the pre-treatment sampling. For comparison of AUC one-way ANOVA followed by Tukey's multiple comparisons test (Figure 3), Kruskal-Wallis test followed by Dunn's post hoc test (Figures 4–6), or Mann-Whitney test (Figure 7) were used. Progesterone data analysis was performed with the Gehan-Breslaw-Wilcoxon Test. Data are expressed either as mean  $\pm$  SD or as median and interquartile range. Statistical analyses were performed with the GraphPad V6 software.

## 3. Results

### 3.1. Kp Analogs' Characterization

oC6 and eC6 used in this study were characterized by HPLC (>98% purity as analyzed at  $\lambda = 280$  nm) and mass spectrometry (the correct  $m/z$  values were observed) confirming their correct chemical structure (Figure 2A,B).

In the  $\text{Ca}^{2+}$  mobilization assay, oC6 and eC6 showed similar efficacy and potency with an  $\text{EC}_{50}$  of 0.2 and 0.3 nM, respectively (Figure 2C, N = 5).

### 3.2. During the Non-Breeding Season, Treatment with oC6 Elicited a Stronger Increase in FSH Compared to eC6, but Both Molecules Failed to Increase LH

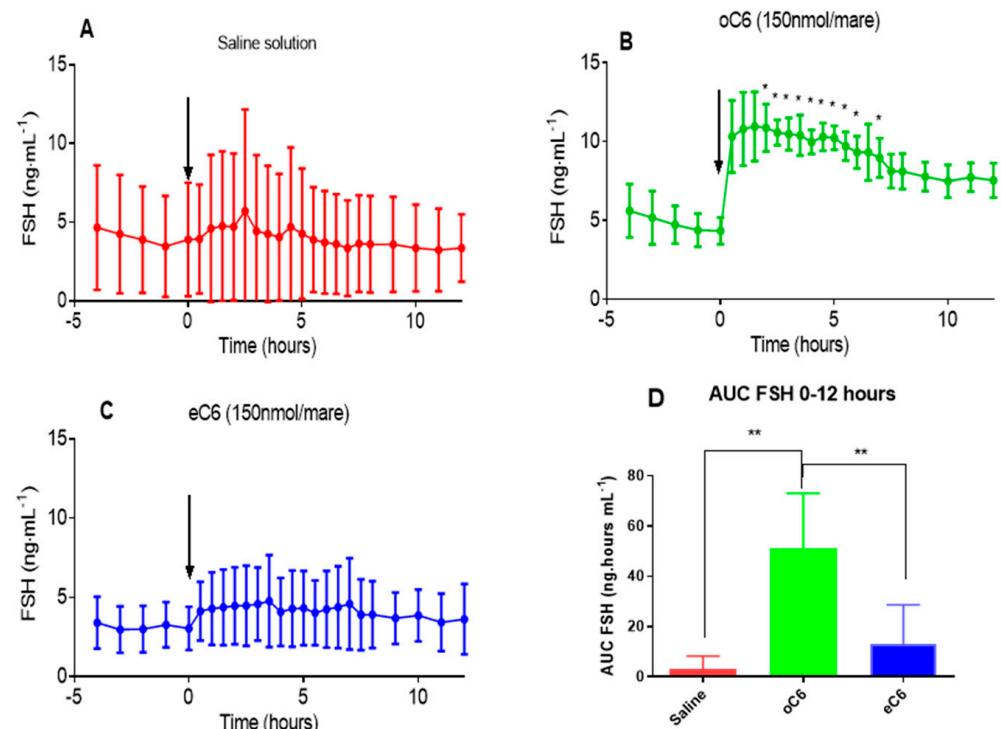
Intravenous injection of 150 nmol/mare of oC6 induced a rapid increase of FSH in all mares (Figure 3 and Supplementary Figure S1).

The mean FSH level in the treated group was higher than the basal level, starting from 2 h post-injection onwards, and up to 7 h ( $F = 1.44$ ,  $p < 0.001$ ) and did not return to basal at the end of the experiment, 12 h after injection (Figure 3). Conversely, the treatment with eC6 increased FSH plasma levels only in 4 out of 9 mares (Supplementary Figure S1). One mare (W660) treated with eC6 showed an increase in FSH starting more than 6 h after injection and was considered as not responding. An analysis of the AUC of treated animals was performed taking into account the entire experimental period (12 h). This analysis revealed that oC6 induced a more pronounced release of FSH ( $51.0 \pm 22.1$   $\text{ng}\cdot\text{hours}\cdot\text{mL}^{-1}$ ; mean  $\pm$  SD) than eC6 ( $12.9 \pm 5.2$   $\text{ng}\cdot\text{hours}\cdot\text{mL}^{-1}$ ; mean  $\pm$  SD) and control ( $3.2 \pm 2.5$   $\text{ng}\cdot\text{hours}\cdot\text{mL}^{-1}$ ;



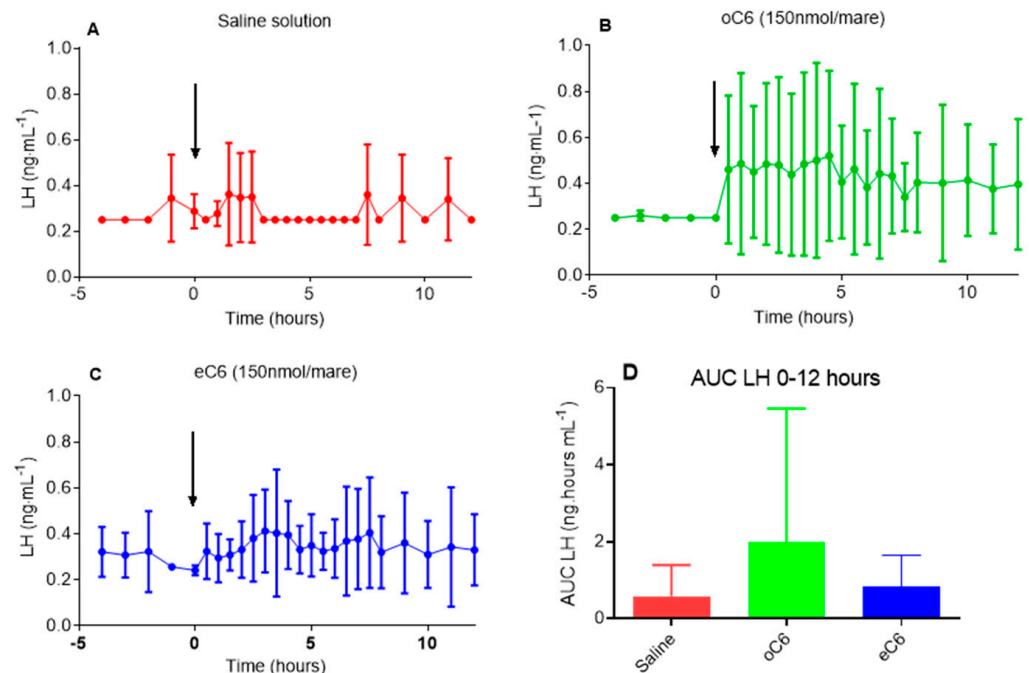
mean  $\pm$  SD) groups (Figure 3;  $F = 11.86$ ,  $p = 0.008$ ). Compared to controls, oC6 and eC6 produced an increase in the total amount of FSH released (AUC) of 16- and 4-fold, respectively.

Concerning LH, oC6 increased plasma levels in 2 out of 5 animals, whereas the effect of eC6 was erratic (Figure 4 and Supplementary Figure S1).



**Figure 3.** Effect of oC6 and eC6 on FSH secretion during the non-breeding season. During the non-breeding season an iv injection of 150 nmol/mare of either saline solution, oC6, or eC6 was delivered at time zero (arrow). Serial blood samples were taken from 4 h before to 12 h after injection and assessed for FSH content by ELISA. The time course showed that oC6 increases FSH plasma concentration compared to basal (B);  $F = 1.44$ ,  $p = 0.001$ ; stars on individual point indicate a significant difference from pre-treatment values), whereas eC6 (C);  $F = 1.47$ ,  $p = 0.08$ ) and saline solution (A);  $F = 1.36$ ,  $p = 0.15$ ) had no effect. The analysis of the area under the curve (AUC) showed that the total amount of FSH released after oC6 treatment is larger than after eC6 or saline solution treatments (D);  $F = 11.86$ ,  $p = 0.008$ ; \*  $p \leq 0.05$ , \*\*  $p \leq 0.01$ ). Data are expressed as mean  $\pm$  SD. Statistical analysis was performed using ANOVA on repeated measure followed by Dunnett multiple comparisons test (A–C) or one way ANOVA followed by Tukey’s multiple comparisons test (D).

In the control group, one mare showed an elevation of both FSH and LH plasma concentration after the injection of saline solution, but these were of shorter duration compared to oC6 treated mares (Supplementary Figure S1). Compared to controls, oC6 and eC6 produced an increase in AUC (Figure 4) of about 3- and 2- fold respectively, but due to the high inter-individual variability, this is not statistically significant ( $F = 0.77$ ,  $p = 0.48$ ).

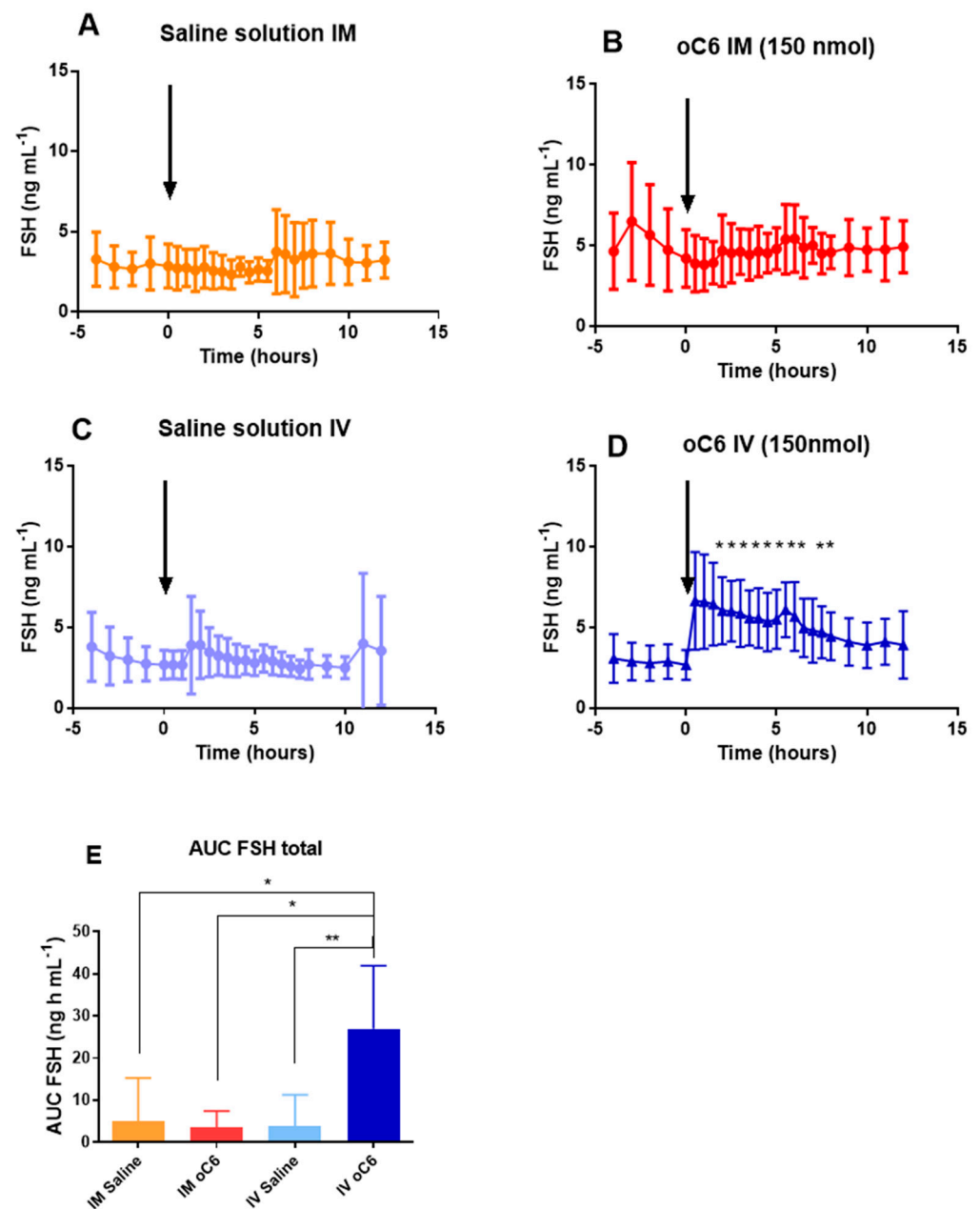


**Figure 4.** Effect of oC6 and eC6 on LH secretion during the non-breeding season. During the non-breeding season, an iv injection of 150 nmol/mare of either oC6, eC6 or saline solution was delivered at time zero (arrow). Serial blood samples were taken from 4 h before to 12 h after injection and assessed for LH content by RIA. The time course of LH plasma concentration showed that oC6 (B) increased LH by about 1.9-fold compared to basal, but the difference was not significant ( $F = 1.1$ ,  $p = 0.36$ ), whereas for eC6 (C),  $F = 0.84$ ,  $p = 0.68$  and saline solution (A);  $F = 0.77$ ,  $p = 0.76$  no increase was observed after treatment. The analysis of the area under the curve (AUC) showed that the total amount of LH released after oC6 treatment is about 3 times that of basal and twice that of eC6, but due to the high inter-individual variability this was not statistically significant ( $F = 0.77$ ,  $p = 0.48$ ) (D). Data are expressed as mean  $\pm$  SD. Statistical analysis was performed by using ANOVA on repeated measures (A–C) or Kruskal-Wallis test (D).

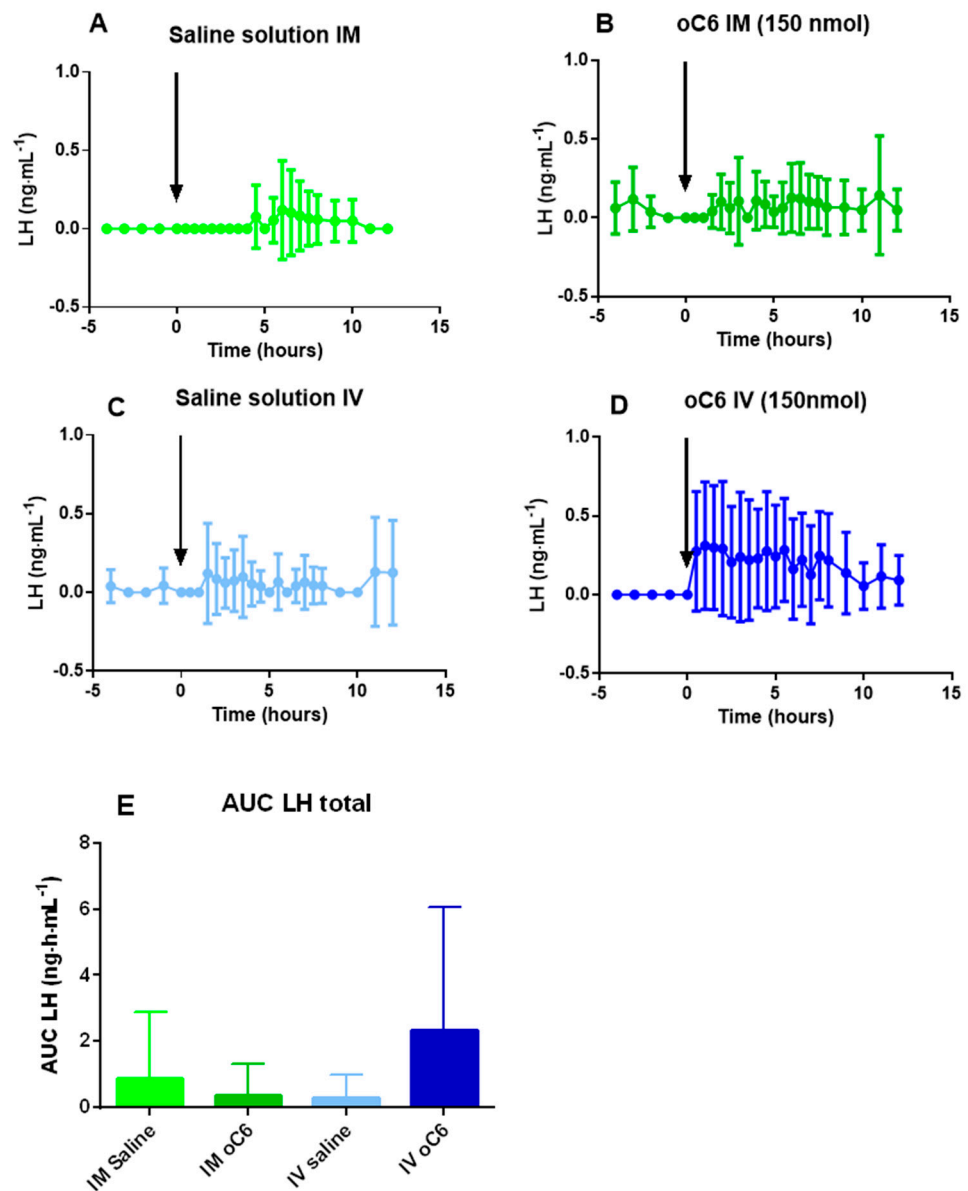
### 3.3. During the Non-Breeding Season Intravenous Administration of oC6 Is More Effective Than Intramuscular Administration

Previous data suggested that the increase in plasma gonadotropins level in the mare is positively correlated with the duration of Kp delivery [4]. Because the administration route may influence the duration of drug action, we decided to compare the effect of iv and im injection of oC6. Surprisingly, the im injection of oC6 had no effect on either FSH or LH plasma concentration (Figures 5 and 6), but two mares had a high FSH plasma level before treatment (Supplementary Figure S2) making it difficult to evaluate treatment efficacy.

Conversely, iv injection of oC6 increased FSH plasma concentration in all treated mares (Figure 5 and Supplementary Figure S2). The effect lasted for about 8 h (Figure 5) leading to a substantial increase in the AUC compared to the other groups (5- to 7- fold,  $X^2 = 11.85$ ,  $p = 0.008$ ). The effect of oC6 iv administration on LH plasma levels was less pronounced (Figure 6). Only 2 out of 6 mares showed an increase in LH after the treatment (Supplementary Figure S2). The treatment induced a larger secretion of LH (AUC) compared to the control iv group (about 9-fold, Figure 6), but due to the high variability in the response between mares (Supplementary Figure S2), statistical significance was not reached ( $X^2 = 2.42$ ,  $p = 0.49$ ).



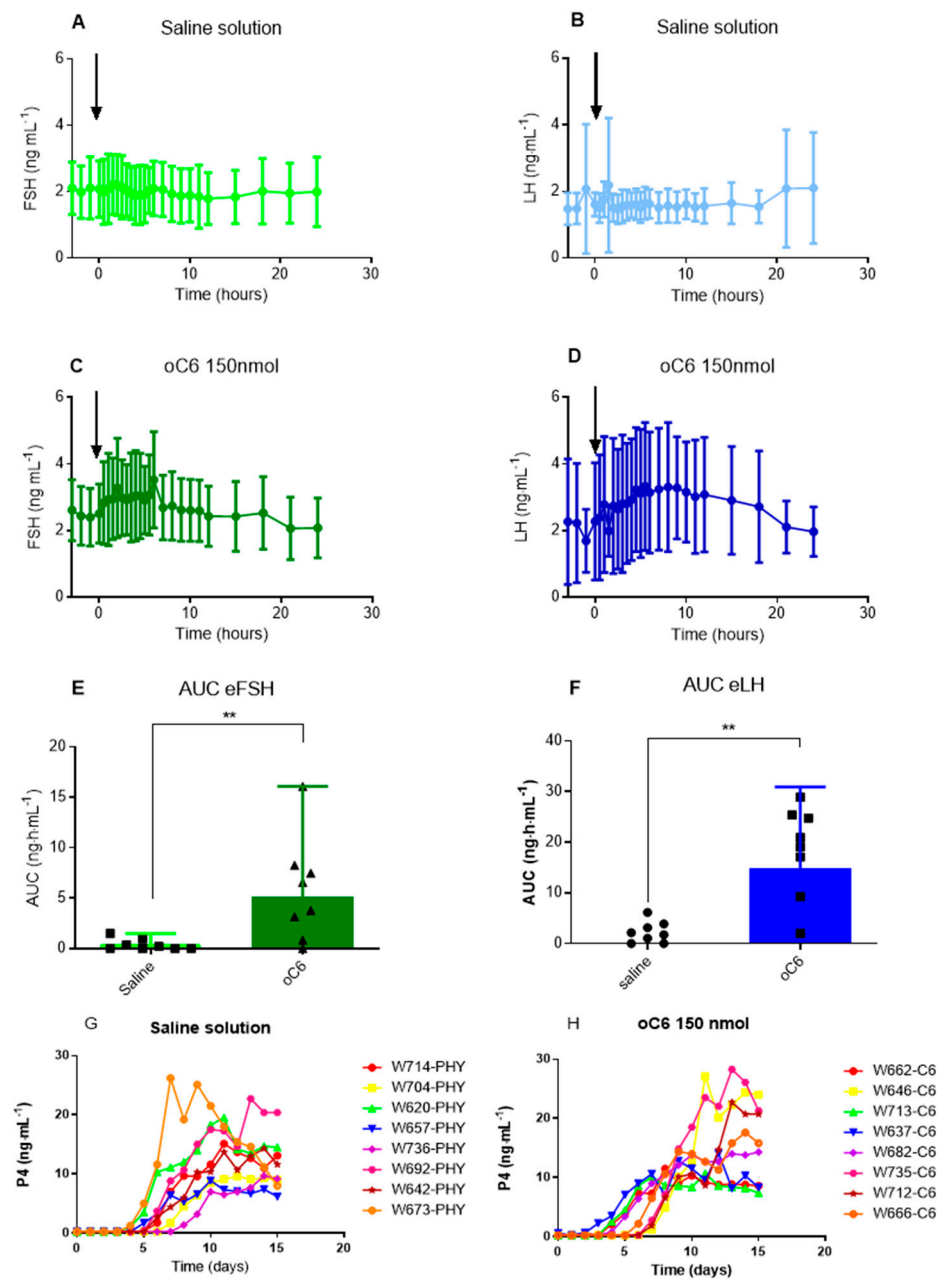
**Figure 5.** Comparison of the effect of iv and im injection of oC6 on FSH plasma level. During the non-breeding season either oC6 (150 nmol/mare) or saline solution were injected at time zero (arrow) either iv or im. Serial blood samples were taken from 4 h before to 12 h after injection and assessed for FSH content by ELISA. The im injection of oC6 had no effect on FSH plasma level (B);  $F = 1.44$ ,  $p = 0.1$ ), conversely the iv injection of oC6 significantly increased FSH plasma concentration (D);  $F = 8.84$ ,  $p < 0.001$ ; stars on individual point indicate a significant difference from pre-treatment values). Injections of saline solution im or iv had no effect on FSH plasma concentration (A);  $F = 0.89$ ,  $p = 0.61$ ; (C);  $F = 0.78$ ,  $p = 0.76$  respectively). The analysis of the area under the curve (AUC) showed that the total amount of FSH released after an iv injection of oC6 is larger than after an im injection ((E);  $\chi^2 = 11.85$ ,  $p = 0.008$ ; \*  $p \leq 0.05$ , \*\*  $p \leq 0.01$ ). Data are expressed as mean  $\pm$  SD. Statistical analysis was performed using ANOVA on repeated measures (A–D) Kruskal Wallis followed by Dunn’s post hoc test (E).



**Figure 6.** Comparison of the effect of iv and im injection of oC6 on LH plasma level. During the non-breeding season, either oC6 (150 nmol/mare) or saline solution were injected at time zero (arrow) either iv or im. Serial blood samples were taken from 4 h before to 12 h after injection and assessed for LH content by RIA. The time course showed that LH plasma concentrations were not modified by an im injection of oC6 (B),  $F = 0.87$ ,  $p = 0.64$ ) or saline solution (A),  $F = 0.9$ ,  $p = 0.61$ ). The iv injection of saline solution had no effect on LH plasma concentration (C),  $F = 0.1$ ,  $p = 0.91$ ), whereas oC6 induced a limited increase in LH compared to pretreatment concentration (D),  $F = 1.31$ ,  $p = 0.17$ ). The analysis of the area under the curve (AUC) showed that the total amount of LH released after iv oC6 treatment is about 3 times that of oC6 im injection and 9-fold that of iv saline solution injection ((E), with a statistical significance of  $X^2 = 2.42$ ,  $p = 0.49$ ). Data are expressed as mean  $\pm$  SD. Statistical analysis was performed by using ANOVA on repeated measures (A–D), or Kruskal Wallis followed by Dunn’s post hoc test (E).

### 3.4. Treatment with oC6 during the Breeding Season Increases FSH and LH but Has No Effect on Follicular Growth and Ovulation Timing

The iv treatment with oC6 during the breeding season triggered an increase in FSH and LH plasma concentration in 5 out of 8 and in 6 out of 8 mares, respectively (Figure 7 and Supplementary Figure S3).



**Figure 7.** Effect of oC6 iv injection on gonadotropins and progesterone during the breeding season. During the breeding season, either oC6 (150 nmol/mare) or saline solution were injected at time zero (arrow). Serial blood samples were taken from 4 h before to 24 h after injection and assessed for FSH and LH content by ELISA and RIA, respectively (A–D). The injection of oC6 increased the total amount of FSH released compared to saline solution ((E),  $U = 8$ ,  $p = 0.01$ ). The total amount of LH secreted during the 24 h after oC6 treatment increased by about 8-fold compared to saline solution ((F),  $U = 4$ ,  $p = 0.02$ ). In (G,H) are shown the individual profiles of plasma progesterone (P4) concentration in the 15 days following the injection of saline solution (G) or oC6 (H). Data are expressed as mean  $\pm$  SD (A–D) or median and interquartile range (E,F). Statistical analysis was performed by ANOVA on repeated measures (A–D) or Mann-Whitney test (E,F). \*\*  $p \leq 0.02$ .

The AUC analysis showed that oC6 increased FSH and LH secretion compared to saline solution by about 15- and 8-fold, respectively (Figure 7) ( $U = 8$ ,  $p = 0.01$ ,  $U = 8$ , and  $U = 4$ ,  $p = 0.02$ , respectively).

In the treated group, two mares ovulated within 48 h after treatment. However, ovulation timing in the remaining mares was similar to that observed in the control group.

Results of P4 assay did not show a clear difference between treated and control mares ( $U = 24, p = 0.44$ ), but four mares of the treated group showed an increase in progesterone already from day 4 post-treatment onwards compared to only two for the control group (Figure 7).

#### 4. Discussion

The Kp system is a key element of mammalian reproductive system stimulating ovulation in several mammalian species. Yet, previous works in the mare have fallen short to show that this is the case for this species, casting doubts about Kp system holding a central role in eliciting mare ovulation. Our results obtained using Kp analogs further illustrate the difficulty of stimulating ovulation in the mare through the kisspeptin system but clarify some issues and suggest possible ways forward to solve this conundrum.

The first attempt to test Kp effect on gonadotropins secretion and ovulation was realized with the rat Kp10 isoform, the sequence of which is identical to that of the ovine Kp10 (YNWNSFGLRY-NH<sub>2</sub>). The molecule was injected into light-horse mares in dioestrous at different concentrations (1, 500, and 1000 µg per mare). Even though higher concentrations increased LH and FSH plasma levels, this increase was short lasting (less than 4 h) and there was no effect on ovulation timing [16]. The injection of human Kp10 (YNWNSFGLRF-NH<sub>2</sub>) produced similar results with stimulation of LH secretion but no ovulation (7). Further studies investigated if repeated administrations of the equine Kp10 (eKp10, YRWNSFGLRY-NH<sub>2</sub>) would be more effective in triggering ovulation. A first group of mares received 0.5 mg eKp10 every 4 h from day 16 post-ovulation until ovulation occurred, or up to day 25 post-ovulation. A second group received the same treatment, but it started at the beginning of oestrus and in the presence of a follicle of >30 mm in diameter. Under these experimental conditions, no effect was observed on either LH or FSH plasma concentration and on ovulation timing [5]. In another set of experiments, performed during the breeding season, mares were injected with eKp10 (0.5 mg iv) every 4 h for 2 days. This repeated administration procedure did not trigger an LH surge, nor did it sustain an increase in serum LH throughout the experimental period [17]. We also performed several attempts to induce ovulation using eKp10 at different dosing regimens (bolus injection, short- and long-term perfusion), different concentrations (0.5, 1, 3, and 6 mg per hours) and under different physiological states (early, middle and late follicular phase). Even though we were able to stimulate gonadotropins release, all treatments nevertheless failed to trigger ovulation [4]. Several hypotheses could be put forth to explain this lack of efficacy in triggering ovulation: (i) a difference in the general endocrinology governing ovulation in the mare (ii) the neuroanatomy and functioning of the mare's GnRH system, and (iii) the efficacy and the pharmacokinetics of Kp10 and in particular that of eKp10.

Concerning this last point, eKp10 differs from oKp10 by a single amino acid substitution in position two, where an Asn is substituted by an Arg. This mutation resides outside the last five amino acids in the C-terminal position, which are thought to be the Kp10 pharmacophore, which is the minimal requested region essential for the activity of the molecule [18]. Nevertheless, we have previously shown that in vitro, when tested on HEK-293 cells transfected with the human KISS1R, eKp10 is less active than oKp10 [19]. A similarly reduced activity compared to oKp10 was also observed when administered to ewes and LH plasma concentration used as a biomarker of efficacy [19].

We have previously shown that the Kp analog oC6, designed on the scaffold of the ovine Kp10 sequence, induces ovulation in the ewe and in the goat [8,9]. This molecule has an improved pharmacokinetics profile compared to oKp10. To explore further if the problem with the lack of efficacy would reside in the sequence of eKp10, we prepared a C6 modified according to the eKp10 sequence, eC6, and compared its effect to that of oC6. When tested in a Ca<sup>2+</sup> mobilization assay in HEK-293 cells, expressing the hKISS1R, the two molecules showed similar potency and efficacy. However, when tested for their capacity to increase plasma gonadotropins concentration in the mare, oC6 was more effective than eC6. Inconsistency of in vitro and in vivo results might be dependent on the

peculiarities of the horse reproductive and Kp systems or pertain to specific receptor-ligand interactions. Considering this last aspect, it has been shown that compounds' kinetics properties, especially the retention time on the receptor, might have a significant impact on their *in vivo* effect. Actually, the retention time may even be of greater importance for *in vivo* drug activity than its affinity [20]. This information is not available for the compounds we used, and it would be an interesting point for further investigations in order to understand the reason of the discordance between *in vivo* and *in vitro* results.

Neither of the two analogs induced any significant increase in plasma LH concentration when tested during the non-breeding season. LH plasma concentration during the non-breeding season is at the lower limit of sensitivity of our assay. For practical purposes, the points below assay sensitivity were set equal to the lower detection limit of the assay. By doing this, we may have erased possible differences in the lower concentrations and overlooked an increase in LH. It should also be mentioned that equine LH is released in various isoforms that could vary through the oestrous cycle [21]. Hence, the antibodies used for RIA may have a different affinity for the different isoforms and may prevent detection of subtle changes in LH concentration. On the other hand, during the non-breeding season, and during the transition to the breeding season LH level is at its year lowest, whereas FSH is higher and declines prior to the first ovulation [22]. Hence, it is possible that a strong physiological inhibition of LH is in place at this time of the year, rendering it difficult to stimulate LH increase.

Because *im* injection could assure a longer action of the injected drug and would be a preferred route of administration in a farm setting, we compared the effect of an *im* injection with that of an *iv* injection. However, the *im* injection produced a smaller increase in gonadotropins compared to the *iv* administration. It should be mentioned that oC6 aqueous solution at the concentration used for the injection tends to form a gel. When injecting *im*, the gel formation might significantly slow the passage into the blood of the molecule. Conversely, when injected in the blood, the dilution effect would facilitate the free circulation of the molecule. Hence, at the dose we used, the quantity of C6 reaching the blood circulation at any given time after the *im* injection could have been too low to trigger an increase in gonadotropins. The use of a higher dose might have a more pronounced effect, which should be tested in further experiments.

To check if oC6 would trigger ovulation during the breeding season we decided to treat mares when a pre-ovulatory follicle was detected. Compared to other species, the mare has an unusually irregular duration of the follicular phase ranging from 2 to 14 days, and a highly variable pre-ovulatory follicle diameter ranging from 31 to 59 mm in size. We decided to inject C6 when the follicle diameter ranges from 34–37 mm, a size that should be appropriate to elicit and synchronize ovulations in most mares. Under these conditions, treatment with oC6 increased both LH and FSH plasma concentration and all mares ovulated. However, transrectal ultrasonography and progesterone plasma level revealed that ovulation timing in the treated group was not different from that of the control mares.

Should we conclude from these results that stimulation of the Kp system is not required to induce ovulation in the mare? Answering this question is not trivial and could have important implications for a possible use of Kp analogs to manage reproduction in the mare. Several elements should be taken into account when considering the Kp system and the horse ovulation endocrinology. One might argue that this is explained by the various peculiarities of the mare endocrine reproductive system, even though the exact reason(s) as to why this may preclude the action of Kp are not forthcoming [23]. However, there are alternative, and not mutually exclusive, explanations that revolve around the existence of multiple endogenous Kp isoforms, each having its own level of activity *in vivo*. Even though data on this topic are limited they might have interesting implications. It has been shown that administration of human Kp54 (hKp54) in the mouse triggers a much longer increase in LH compared to hKp10 [24]. Based on experiments showing that hKp54 could activate GnRH neurons, as demonstrated by colocalization with the immediate early

gene c-Fos, it has been proposed that hKp54, but not hKp10, would pass the blood brain barrier [24]. In male rats, hKp54 more potently stimulates LH and testosterone secretion than hKp14 and hKp10 [25]. Furthermore, Kp52, which is the longest endogenous isoform in rodents, was more active than human and rodents' Kp10 in stimulating LH release in male rats [26]. It is therefore possible that: (i) different Kp isoforms would not be equivalent in their capacity to stimulate the reproductive system and (ii) different isoforms might have different roles depending on the species. It should also be pointed out that even though Kp10 has been the most widely used pharmacological tool for exploring the physiology of the Kp system, there is no formal proof that this is the endogenous form naturally used in mammals to modulate reproductive physiology. Therefore, it could be that processing of the Kp precursor, leading to different isoforms abundance in different species, may account for a species-specific role of a particular isoform in the reproductive physiology of a given species. Further experiments will be required to identify the various isoforms in the horse, the complement of which remains completely unknown, in order to probe this hypothesis more rigorously.

## 5. Conclusions

In conclusion, these results concur with prior findings from both our lab and other teams, which collectively show that Kp10, or longer-lived analogs based on this sequence such as we show here with C6, do stimulate gonadotropin secretion but are not sufficient to trigger ovulation. This contrasts with findings in other species, including sheep and goats. The reason(s) for this inability of Kp10 to trigger ovulation remain(s) unknown, but the notion that longer Kp forms (e.g., Kp54) may be required to stimulate mare's ovulation appears as a distinct possibility, which paves the way for future studies.

**Supplementary Materials:** The following supporting information can be downloaded at: <https://www.mdpi.com/article/10.3390/agriculture12111846/s1>, Figure S1. The graphs show the time course of plasma concentration of FSH (A,C,E) and LH (B,D,F) of each mare following the injection of either saline solution (A,B), eC6 (150 nmol/mare iv) (C,D), or oC6 (150 nmol/mare iv) (E,F) during the non-breeding season. Figure S2. The graphs show the time course of plasma concentration of FSH (A–D) and LH (E–H) of each mare following the injection of either saline solution im or iv (A,C,E,G), oC6 (150 nmol im) (B,F), or oC6 (150 nmol iv) (D,H) during the non-breeding season. Figure S3. The graphs show the time course of plasma concentration of FSH (A,B) and LH (C,D) of each mare following the injection of either saline solution (A,C) or oC6 (150 nmol iv) (B,D) during the breeding season. In F is showed the daily percentage of mare with increased P4 plasma level.

**Author Contributions:** Conceptualization, F.D.-T., A.D. and M.B.; formal analysis F.D.-T., D.L., V.R., V.T.M. and M.B.; investigation F.D.-T., D.L., V.R., F.R., P.B., T.B., A.G., E.H., C.D., V.H., A.D. and M.B.; resources, V.T.M. and V.A.; writing—original draft preparation F.D.-T. and M.B.; writing—review and editing, V.A., C.D. and M.B.; supervision, A.D. and M.B.; project administration, A.D. and M.B.; funding acquisition A.D. and M.B. All authors have read and agreed to the published version of the manuscript.

**Funding:** This research was funded by ANR project ANR-15-CE20-0015-01, IFCE et Région Centre Val de Loire project NOVO-Kiss.

**Institutional Review Board Statement:** All experiments with mares were conducted in accordance with the French national law (authorizations 37–118 and G 37-175-2of the French Ministry of Agriculture) implementing the European Communities Council Directive 86/609/EEC and validated by the local Animal Ethics Committee (File numbers: 201907251345605 and 2019101117278451).

**Data Availability Statement:** Data available on request from the authors.

**Acknowledgments:** We warmly thank the personnel of the Unité Expérimentale PAO n°1297 (Animal Physiology Experimental Facility, DOI: 10.15454/1.5573896321728955E12) of INRAE, Centre Val de Loire for help with animal husbandry, Yves Combarous for the gift of the antibodies and advice on the setting of the FSH ELISA method, and Hugues Dardente for critical reading of the manuscript.



**Conflicts of Interest:** The authors declare no conflict of interest. The funders had no role in the design of the study; in the collection, analyses, or interpretation of data; in the writing of the manuscript; or in the decision to publish the results.

## References

- Ginther, O.J. *Reproductive Biology of the Mare, Basic and Applied Aspects*; Equiservices: ed Cross Plains, WI, USA, 1992.
- Jayasena, C.N.; Abbara, A.; Comminos, A.N.; Nijher, G.M.; Christopoulos, G.; Narayanaswamy, S.; Izzi-Engbeaya, C.; Sridharan, M.; Mason, A.J.; Warwick, J.; et al. Kisspeptin-54 triggers egg maturation in women undergoing in vitro fertilization. *J. Clin. Investig.* **2014**, *124*, 3667–3677. [[CrossRef](#)]
- Caraty, A.; Smith, J.T.; Lomet, D.; Ben Said, S.; Morrissey, A.; Cognie, J.; Doughton, B.; Baril, G.; Briant, C.; Clarke, I.J. Kisspeptin synchronizes preovulatory surges in cyclical ewes and causes ovulation in seasonally acyclic ewes. *Endocrinology* **2007**, *148*, 5258–5267. [[CrossRef](#)] [[PubMed](#)]
- Decourt, C.; Caraty, A.; Briant, C.; Guillaume, D.; Lomet, D.; Chesneau, D.; Lardic, L.; Duchamp, G.; Reigner, F.; Monget, P.; et al. Acute injection and chronic perfusion of kisspeptin elicit gonadotropins release but fail to trigger ovulation in the mare. *Biol. Reprod.* **2014**, *90*, 36. [[CrossRef](#)] [[PubMed](#)]
- Magee, C.; Bruemmer, J.E.; Nett, T.M.; Squires, E.L.; Clay, C.M. Kisspeptide in the estrous mare: Is it an appropriate ovulation-inducing agent? *Theriogenology* **2012**, *78*, 1987–1996. [[CrossRef](#)] [[PubMed](#)]
- Scott, C.J.; Rose, J.L.; Gunn, A.J.; McGrath, B.M. Kisspeptin and the regulation of the reproductive axis in domestic animals. *J. Endocrinol.* **2019**, *240*, R1–R16. [[CrossRef](#)]
- McGrath, B.M.; Scott, C.J.; Wynn, P.C.; Loy, J.; Norman, S.T. Kisspeptin stimulates LH secretion but not ovulation in mares during vernal transition. *Theriogenology* **2016**, *86*, 1566–1572. [[CrossRef](#)]
- Decourt, C.; Robert, V.; Anger, K.; Galibert, M.; Madinier, J.B.; Liu, X.; Dardente, H.; Lomet, D.; Delmas, A.F.; Caraty, A.; et al. A synthetic kisspeptin analog that triggers ovulation and advances puberty. *Sci. Rep.* **2016**, *6*, 26908. [[CrossRef](#)]
- Decourt, C.; Robert, V.; Lomet, D.; Anger, K.; Georgelin, M.; Poissenot, K.; Pellicer-Rubio, M.T.; Aucagne, V.; Beltramo, M. The kisspeptin analog C6 is a possible alternative to PMSG (pregnant mare serum gonadotropin) for triggering synchronized and fertile ovulations in the Alpine goat. *PLoS ONE* **2019**, *14*, e0214424. [[CrossRef](#)]
- Goddard-Borger, E.D.; Stick, R.V. An efficient, inexpensive, and shelf-stable diazotransfer reagent: Imidazole-1-sulfonyl azide hydrochloride. *Org. Lett.* **2007**, *9*, 3797–3800. [[CrossRef](#)]
- Pokorski, J.K.; Jenkins, L.M.; Feng, H.; Durell, S.R.; Bai, Y.; Appella, D.H. Introduction of a triazole amino acid into a peptidic oligomer induces turn formation in aqueous solution. *Org. Lett.* **2007**, *9*, 2381–2383. [[CrossRef](#)]
- Pace, C.N.; Vajdos, F.; Fee, L.; Grimsley, G.; Gray, T. How to measure and predict the molar absorption coefficient of a protein. *Protein Sci.* **1995**, *4*, 2411–2423. [[CrossRef](#)] [[PubMed](#)]
- Beltramo, M.; Robert, V.; Galibert, M.; Madinier, J.B.; Marceau, P.; Dardente, H.; Decourt, C.; De Roux, N.; Lomet, D.; Delmas, A.F.; et al. Rational design of triazololipopeptides analogs of kisspeptin inducing a long-lasting increase of gonadotropins. *J. Med. Chem.* **2015**, *58*, 3459–3470. [[CrossRef](#)] [[PubMed](#)]
- Guillaume, D.; Bruneau, B.; Briant, C. Comparison of the effects of two GnRH antagonists on LH and FSH secretion, follicular growth and ovulation in the mare. *Reprod. Nutr. Dev.* **2002**, *42*, 251–264. [[CrossRef](#)]
- Combarous, Y.; Henge, M.H. Equine follicle-stimulating hormone. Purification, acid dissociation, and binding to equine testicular tissue. *J. Biol. Chem.* **1981**, *256*, 9567–9572. [[CrossRef](#)]
- Magee, C.; Foradori, C.D.; Bruemmer, J.E.; Arreguin-Arevalo, J.A.; McCue, P.M.; Handa, R.J.; Squires, E.L.; Clay, C.M. Biological and anatomical evidence for kisspeptin regulation of the hypothalamic-pituitary-gonadal axis of estrous horse mares. *Endocrinology* **2009**, *150*, 2813–2821. [[CrossRef](#)] [[PubMed](#)]
- Magee, C.; Bruemmer, J.E.; Kirkley, K.S.; Sylvester, L.A.; Runyan, B.; Nett, T.M.; Squires, E.L.; Clay, C.M. Kisspeptin has an independent and direct effect on the pituitary gland in the mare. *Theriogenology* **2020**, *209*, 157199. [[CrossRef](#)] [[PubMed](#)]
- Orsini, M.J.; Klein, M.A.; Beavers, M.P.; Connolly, P.J.; Middleton, S.A.; Mayo, K.H. Metastin (KiSS-1) mimetics identified from peptide structure-activity relationship-derived pharmacophores and directed small molecule database screening. *J. Med. Chem.* **2007**, *50*, 462–471. [[CrossRef](#)]
- Beltramo, M.; Robert, V.; Decourt, C. The kisspeptin system in domestic animals: What we know and what we still need to understand of its role in reproduction. *Domest. Anim. Endocrinol.* **2020**, *73*, 106466. [[CrossRef](#)]
- Guo, D.; Hillger, J.M.; Ijzerman, A.P.; Heitman, L. Drug-target residence time—a case for G protein-coupled receptors. *Med. Res. Rev.* **2014**, *34*, 856–892. [[CrossRef](#)]
- Alexander, S.; Irvine, C.H. Radioimmunoassay and in-vitro bioassay of serum LH throughout the equine oestrous cycle. *J. Reprod. Fertil. Suppl.* **1982**, *32*, 253–260.
- Freedman, L.J.; Garcia, M.C.; Ginther, O.J. Influence of photoperiod and ovaries on seasonal reproductive activity in mares. *Biol. Reprod.* **1979**, *20*, 567–574. [[CrossRef](#)] [[PubMed](#)]
- Duittoz, A.; Cognié, J.; Decourt, C.; Derouin, F.; Forestier, A.; Lecompte, F.; Bouakkaz, A.; Reigner, F. *The Horse: An Unexpected Animal Model for (Unexpected) Neuroendocrinology*; John Wiley & Sons Ltd.: Chester, UK, 2018.
- d’Anglemont de Tassigny, X.; Jayasena, C.N.; Murphy, K.G.; Dhillo, W.S.; Colledge, W.H. Mechanistic insights into the more potent effect of KP-54 compared to KP-10 in vivo. *PLoS ONE* **2017**, *12*, e0176821. [[CrossRef](#)] [[PubMed](#)]

25. Thompson, E.L.; Murphy, K.G.; Patterson, M.; Bewick, G.A.; Stamp, G.W.; Curtis, A.E.; Cooke, J.H.; Jethwa, P.H.; Todd, J.F.; Ghatei, M.A.; et al. Chronic subcutaneous administration of kisspeptin-54 causes testicular degeneration in adult male rats. *Am. J. Physiol. Endocrinol. Metab.* **2006**, *291*, E1074–E1082. [[CrossRef](#)] [[PubMed](#)]
26. Pheng, V.; Uenoyama, Y.; Homma, T.; Inamoto, Y.; Takase, K.; Yoshizawa-Kumagaye, K.; Isaka, S.; Watanabe, T.X.; Ohkura, S.; Tomikawa, J.; et al. Potencies of centrally- or peripherally-injected full-length kisspeptin or its C-terminal decapeptide on LH release in intact male rats. *J. Reprod. Dev.* **2009**, *55*, 378–382. [[CrossRef](#)] [[PubMed](#)]