



HAL
open science

Potential scientific synergies in weak lensing studies between the CSST and Euclid space probes

D.Z. Liu, X.M. Meng, X.Z. Er, Z.H. Fan, M. Kilbinger, G.L. Li, R. Li, T.
Schrabback, D. Scognamiglio, H.Y. Shan, et al.

► **To cite this version:**

D.Z. Liu, X.M. Meng, X.Z. Er, Z.H. Fan, M. Kilbinger, et al.. Potential scientific synergies in weak lensing studies between the CSST and Euclid space probes. *Astronomy and Astrophysics - A&A*, 2023, 669, pp.A128. 10.1051/0004-6361/202243978 . hal-03862345

HAL Id: hal-03862345

<https://hal.science/hal-03862345>

Submitted on 15 Oct 2023

HAL is a multi-disciplinary open access archive for the deposit and dissemination of scientific research documents, whether they are published or not. The documents may come from teaching and research institutions in France or abroad, or from public or private research centers.

L'archive ouverte pluridisciplinaire **HAL**, est destinée au dépôt et à la diffusion de documents scientifiques de niveau recherche, publiés ou non, émanant des établissements d'enseignement et de recherche français ou étrangers, des laboratoires publics ou privés.



Distributed under a Creative Commons Attribution 4.0 International License

Potential scientific synergies in weak lensing studies between the CSST and *Euclid* space probes

D. Z. Liu¹, X. M. Meng², X. Z. Er¹, Z. H. Fan¹, M. Kilbinger³, G. L. Li^{4,5}, R. Li^{6,7,8}, T. Schrabback^{9,10}, D. Scognamiglio⁹, H. Y. Shan^{11,12}, C. Tao¹³, Y. S. Ting^{14,15}, J. Zhang¹⁶, S. H. Cheng¹⁷, S. Farrens³, L. P. Fu¹⁸, H. Hildebrandt¹⁹, X. Kang^{4,5}, J. P. Kneib^{20,21}, X. K. Liu¹, Y. Mellier^{22,23}, R. Nakajima⁹, P. Schneider⁹, J. L. Starck³, C. L. Wei⁴, A. H. Wright¹⁹, and H. Zhan^{2,24}

(Affiliations can be found after the references)

Received 9 May 2022 / Accepted 28 October 2022

ABSTRACT

Aims. With the next generation of large surveys poised to join the ranks of observational cosmology in the near future, it is important to explore their potential synergies and to maximize their scientific outcomes. In this study, we aim to investigate the complementarity of two upcoming space missions: *Euclid* and the China Space Station Telescope (CSST), both of which will be focused on weak gravitational lensing for cosmology. In particular, we analyze the photometric redshift (photo- z) measurements by combining NUV, u, g, r, i, z, y bands from CSST with the VIS, Y, J, H bands from *Euclid*, and other optical bands from the ground-based *Vera C. Rubin* Observatory Legacy Survey of Space and Time (LSST) and Dark Energy Survey. We also consider the advantages of combining the two space observational data in simplifying image deblending. For *Euclid*, weak lensing measurements use the broad optical wavelength range of 550–900 nm, for which chromatic point-spread function (PSF) effects are significant. For this purpose, the CSST narrow-band data in the optical can provide valuable information for *Euclid* to obtain more accurate PSF measurements and to calibrate the color and color-gradient biases for galaxy shear measurements.

Methods. We created image simulations, using the *Hubble* Deep UV data as the input catalog, for different surveys and quantified the photo- z performance using the EAZY template fitting code. For the blending analyses, we employed high-resolution HST-ACS CANDELS $F606W$ and $F814W$ data to synthesize mock simulated data for *Euclid*, CSST, and an LSST-like survey. We analyzed the blending fraction for different cases as well as the blending effects on galaxy photometric measurements. Furthermore, we demonstrated that CSST can provide a large enough number of high signal-to-noise ratio multi-band galaxy images to calibrate the color-gradient biases for *Euclid*.

Results. The sky coverage of *Euclid* lies entirely within the CSST footprint. The combination of *Euclid* with the CSST data can thus be done more uniformly than with the various ground-based data that are part of the *Euclid* survey. Our studies show that by combining *Euclid* and CSST, we can reach a photo- z precision of $\sigma_{\text{NMAD}} \approx 0.04$ and an outlier fraction of $\eta \approx 2.4\%$ at the nominal depth of the *Euclid* Wide Survey (VIS < 24.5 AB mag). For CSST, including the *Euclid* Y, J, H bands reduces the overall photo- z outlier fraction from $\sim 8.5\%$ to 2.4%. For $z > 1$, the improvements are even more significant. Because of the similarly high resolutions, the data combination of *Euclid* and CSST can be relatively straightforward for photometry measurements. On the other hand, to include ground-based data, sophisticated deblending utilizing priors from high-resolution space observations are required. The multi-band data from CSST are very helpful in controlling the chromatic PSF effect for *Euclid* VIS shear measurements. The color-gradient bias for *Euclid* galaxies with different bulge-to-total flux ratio at different redshifts can be well calibrated to the level of 0.1% using galaxies from the CSST deep survey.

Key words. dark energy – dark matter – gravitational lensing: weak – large-scale structure of Universe – surveys – telescopes

1. Introduction

Rapid observational developments over the past few decades have shifted cosmological studies dramatically, going from a dire lack of data to fully data-driven surveys. Consequently, our understanding about the Universe has deepened, leading to the emergence of the cosmic concordance model of two dark components, dark matter and dark energy, playing essential roles in shaping the present Universe. On the other hand, however, their nature is yet to be understood and stands as one of the greatest challenges in the research of fundamental physics (e.g., Weinberg et al. 2013).

The dark components affect both the global cosmic expansion as well as the formation and evolution of large-scale structures (LSS). Therefore, observables from both aspects are sought to as sensitive probes (Albrecht et al. 2006). Among others, the weak lensing (WL) effect has been widely recognized as one of the major tools in cosmological studies (Fu & Fan 2014; Kilbinger 2015; Mandelbaum 2018). Arising from the gravi-

tational light deflection by foreground LSS, WL leads to tiny shape distortions and flux changes among background objects (Bartelmann & Schneider 2001). By observing those changes, we can therefore extract the underlying matter distribution in an unbiased way. Furthermore, WL effects depend on the distances between observer, foreground lenses, and background sources, thus shown to be sensitive to the global expansion of the Universe. On the other hand, however, WL cosmological studies are observationally challenging because of the weakness of the signals. Over the past twenty years, the field has witnessed great improvements in high-precision photometric surveys, which have made WL one of the fastest developing areas in cosmological observations.

As in the case of CFHTLenS (Fu et al. 2008; Heymans et al. 2012; Kilbinger et al. 2013), Stage-II (Albrecht et al. 2006) surveys demonstrated fully the observational feasibility of WL cosmological studies. We are now in the Stage-III era, with a number of surveys observing a few thousand square degrees of sky area and resulting in high quality shear

samples containing 10^7 to 10^8 galaxies (Kuijken et al. 2015; Dark Energy Survey Collaboration 2016; Aihara et al. 2018). These surveys have already provided valuable cosmological constraints that are complementary to other probes, such as galaxy clustering or cosmic microwave background (CMB) anisotropies, by breaking the degeneracy of different cosmological parameters (Heymans et al. 2021; Tröster et al. 2021; Abbott et al. 2022; Hikage et al. 2019). In particular, they reveal a potential S_8 discrepancy within the Λ CDM paradigm between the measurements from low-redshift large-scale structures including WL and galaxy clustering, and from the CMB observations (Hildebrandt et al. 2017, 2020; Heymans et al. 2021; Lemos et al. 2021; Planck Collaboration VI 2020). Here, $S_8 \equiv \sigma_8(\Omega_m/0.3)^{0.5}$ along with Ω_m and σ_8 are the present dimensionless matter density and the root-mean-square of the linearly extrapolated matter density fluctuations over a top-hat scale of $8 h^{-1}$ Mpc, with h being the dimensionless Hubble constant in units of $100 \text{ km s}^{-1} \text{ Mpc}^{-1}$. This has sparked a great deal of attention because it may imply new physics beyond our current understanding. On the other hand, however, among the current surveys, the S_8 difference is marginal with a low statistical significance of $<3\sigma$. It remains a matter of debate whether this is a real problem for the Λ CDM cosmology (e.g., Abbott et al. 2022).

To further enhance the power of cosmological constraints, Stage-IV surveys will be in operation within the next five years or so. These include the ground-based *Vera C. Rubin* Observatory Legacy Survey of Space and Time (LSST; Ivezić et al. 2019), the space-based *Euclid* telescope (Laureijs et al. 2011), the *Roman* Space Telescope (Roman; Spergel et al. 2015), and the China Space Station Telescope (CSST; Zhan 2011, 2018, 2021; Fan 2018; Gong et al. 2019). These surveys target at high precision WL measurements for over a billion galaxies, which is an order of magnitude more than that of the current surveys. Consequently, the statistical power will be greatly increased. The S_8 problem, if it indeed exists, will show up unambiguously. Utilizing WL and galaxy clustering statistical analyses, the constraints on the equation-of-state parameters w_0 and w_a of dark energy can be expected to reach the precision of about 0.02 and 0.1, respectively, about an order of magnitude tighter than that from the current survey studies (e.g., Euclid Collaboration 2020a; Gong et al. 2019). Here, the equation of state of dark energy is assumed to be $p_{\text{DE}} = w(z)\rho_{\text{DE}}$ and $w(z) = w_0 + w_a[z/(1+z)]$, with p_{DE} and ρ_{DE} as the pressure and energy density and z as the redshift. This approach allows us to answer a very fundamental question with a high statistical significance, namely, whether dark energy takes the form of a cosmological constant or whether it is dynamical in nature.

The full realization of the statistical capability of Stage IV surveys requires stringent controls on different systematics. For WL cosmological studies, the multiplicative shear measurement bias needs to be known to an accuracy of about 10^{-3} . The photometric redshift (photo- z) bias and scatter in different redshift bins should be less than $10^{-3}(1+z)$ and $0.05(1+z)$, respectively. The catastrophic outlier fraction of photo- z s needs to be less than 10% (e.g., Laureijs et al. 2011). Different Stage-IV surveys have different designs and the question of how to utilize their data to improve the control of systematics, and thus to maximize the science outcome, is an important task that has triggered significant studies (Jain et al. 2015; Rhodes et al. 2017; Chary et al. 2020; Eifler et al. 2021; Guy et al. 2022).

The *Euclid* and the CSST surveys are both space-based projects with common scientific objectives. Their high spatial resolutions allow accurate WL shear measurements for

galaxies of small sizes unachievable from ground-based observations. The fraction of image blending, a serious issue for deep ground-based surveys, is much reduced in the two space surveys, which has the potential to significantly improve the accurate shear and photo- z measurements. The *Euclid* imaging survey has one broad optical VIS band from 550 nm to 900 nm for accurate WL shear measurements, and three near infrared (NIR) bands of Y , J and H for photo- z estimates (Laureijs et al. 2011). To obtain photo- z s with the required accuracies, *Euclid* needs external multi-band optical data (e.g., Rhodes et al. 2017; Euclid Collaboration 2020b; Guinot et al. 2022). For shear measurements using the broad VIS band, the wavelength-dependent point-spread function (PSF) and the differences between the spectral energy distribution (SED) of stars and galaxies can lead to significant biases for galaxy shear measurements (e.g., Eriksen & Hoekstra 2018). In addition, the spatial variation of colors across a galaxy can also induce a color-gradient shear bias and, thus, they need to be dealt with carefully. The CSST has seven optical bands of NUV, u , g , r , i , z , and y (Zhan 2021) for imaging surveys, which are very complementary to *Euclid*. For photo- z measurements, the CSST can provide external optical data necessary for the *Euclid*. On the other hand, the inclusion of the *Euclid* NIR data can significantly improve the CSST photo- z s at redshift $z > 1$. The similar spatial resolutions of the two space missions make the data combinations less complicated than combining space- and ground-based data. The CSST multi-band data in optical can also be very helpful in calibrating the color related shear measurement biases for *Euclid*.

Taking note of the complementary nature of these studies, in this paper, we present the first work aimed at exploring the potential synergies between *Euclid* and CSST with a focus on WL cosmology. This paper is organized as follows. Section 2 describes the characteristics of the CSST and the *Euclid*, respectively. In Sect. 3, we present the possible synergies for WL studies. We briefly mention a few other aspects of cosmological studies that can benefit from the joint analyses of the two missions in Sect. 4. We discuss our results in Sect. 5.

2. Introduction to the CSST and the *Euclid*

2.1. CSST

CSST is a major science project initiated by the China Manned Space Program and is planned to be launched around 2024 (Zhan 2011; Gong et al. 2019). The telescope is a 2 m $f/14$ Cook-type off-axis three-mirror anastigmat (TMA) system with five first-generation instruments: survey camera, terahertz receiver, multichannel imager, integral field spectrograph, and cool-planet imaging coronagraph (Zhan 2021). A fold mirror is placed near the exit pupil to direct light to different instruments. The pointing accuracy of CSST is specified to be $\leq 5''/10''$, with a stability of $\leq 0.05/0.85$ (3σ) over 300 s with/without guide stars. The roll angle accuracy is $\leq 10''$ with $\leq 1.5''$ stability (3σ) over 300 s. The jitter requirement is ≤ 0.01 (3σ).

The wide-field survey camera will be used to carry out a large-area high-resolution multi-band imaging and slitless spectroscopic survey. The imaging survey data will enable precision cosmological studies with multiple probes, including weak lensing, strong lensing, and galaxy clustering. The spectroscopic survey will map the galaxy redshift distribution for extracting cosmic signals of the baryon acoustic oscillation and the redshift-space distortion at different redshifts. The high-quality survey data will also enable a wide range of astrophysical studies, from galaxy formation and evolution to Solar System objects.

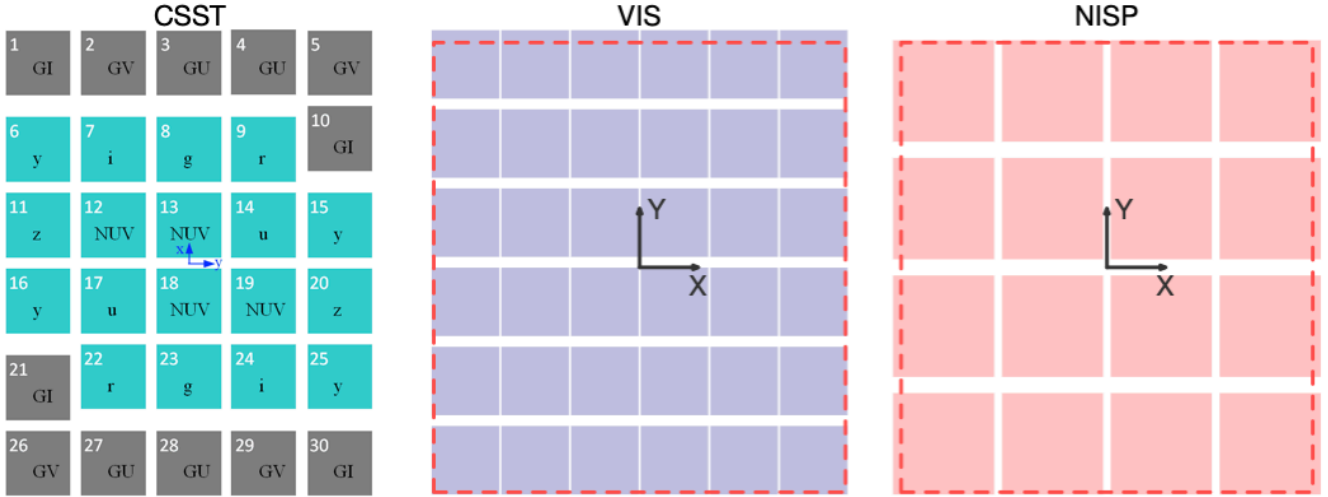


Fig. 1. Focal plane arrangements of the CSST wide-field survey camera (*left*), *Euclid* VIS (*middle*), and NISP (*right*). The X and Y axes in each camera define the reference frame in the focal plane. For CSST, the focal plane is segmented into 30 tiles with 18 for multi-band imaging (cyan tiles) and 12 for slitless spectroscopy (dark grey tiles). The layout of the filters and corresponding serial numbers for both imaging and spectroscopy are also shown. The 30 tiles, each of $9k \times 9k$ pixels, are arranged into a 5×6 array with the FoV of $1^\circ 1' \times 1^\circ 0'$. For *Euclid* VIS and NISP, the schematic focal planes are taken from [Euclid Collaboration \(2022\)](#). The VIS imager comprises $36 \ 4k \times 4k$ CCDs with a pixel scale of $0''.1$, while the NISP includes 16 arrays of $2k \times 2k$ HgCdTe detectors with a pixel scale of $0''.3$. The joint FoV of the two instruments, which is about 0.54 deg^2 , is shown in the red dashed frames.

The primary focal plane of the survey camera is shown in the left panel of Fig. 1. It is segmented into 30 tiles, with 18 meant for multi-band imaging and 12 for slitless spectroscopic observations. They are arranged into a 5×6 array. The field-of-view (FoV) is $1^\circ 1' \times 1^\circ 0'$. Covering the wavelength range from 255 to 1000 nm, the imaging bands consist of NUV, u , g , r , i , z , and y , and the pixel scale is $0''.074$. The slitless spectroscopy bands include GU (255–400 nm), GV (400–620 nm), and GI (620–1000 nm) with the same pixel scale. These different bands are distributed in the focal plane, with each occupying either two or four segments. The target angular resolution for imaging observations is about $0''.15$ in terms of the radius at 80% encircled energy (r_{EE80}). The resolution has a slight band variation. The angular resolution for the slitless spectroscopy is $0''.3/\text{pixel}$ and the average spectral resolution is $R \geq 200$.

The planned surveys for both imaging and spectroscopy include (but are not limited to) a wide-field survey over about $17\,500 \text{ deg}^2$ sky area and a deep-field survey of about 400 deg^2 . The wide-field imaging survey will reach an average limiting magnitude better than 25.5 AB mag at 5σ for point sources. For the spectroscopic survey, it is ~ 23.7 mag. They are about 1.2 mag deeper for the deep-field survey. For WL studies from the wide-field survey, the expected galaxy number density can reach $n_g \sim 20 \text{ arcmin}^{-2}$ and the median redshift is about 0.8.

Around the primary focal plane, a flux calibration unit and a NIR unit will be equipped. The flux calibration unit is designed to assist flux calibration in r -band by observing stars that will be too bright for the main survey. This will be achieved by placing the detector off the focus, allowing a saturation limit 4 mag brighter than that of the main survey. The NIR unit has eight HgCdTe detectors in two groups, imaging and slitless spectroscopy. Each group has four detectors, two in the J' -band (0.9–1.3 μm) and two in H' -band (1.3–1.7 μm). Each detector has a FoV of $\sim 1.1 \times 0.9$ ($\sim 1/100$ of the detectors in the primary focal plane). The limiting magnitude for NIR imaging is ~ 23.4 mag in J' and ~ 22.8 mag in H' (150 s exposure, point source 5σ). The spectral resolution for slitless spectroscopy is $R \geq 100$ and point sources brighter than 20.5 mag are detectable.

2.2. *Euclid*

Euclid (Laureijs et al. 2011) is an ESA M-class astrophysics and cosmology mission with a currently expected launch early 2023. For cosmological purposes, it will employ two primary probes, weak lensing and galaxy clustering, aimed at constraining dark energy properties with a figure of merit $\text{FoM} > 400$ (e.g., Albrecht et al. 2006), the exponent γ of the growth factor with a 1σ precision of < 0.02 , the sum of the neutrino masses with a 1σ precision of $< 0.03 \text{ eV}$, and initial conditions of cosmic structure formation parameterized by f_{NL} to a 1σ precision of ~ 2 in combination with *Planck* CMB observations (Planck Collaboration VI 2020; Euclid Collaboration 2020a).

Euclid's payload includes a 1.2 m Korsch telescope equipped with two instruments, which simultaneously probe a common FoV of $\sim 0.54 \text{ deg}^2$. The optical VIS imager comprises $36 \ 4k \times 4k$ CCDs with $0''.1/\text{pixel}$. The Near-Infrared Spectrograph and Photometer (NISP) includes 16 arrays of $2k \times 2k$ NIR-sensitive HgCdTe detectors with a pixel scale of $0''.3$. The middle and right panels of Fig. 1 show the focal planes of the two instruments. *Euclid* will survey $15\,000 \text{ deg}^2$ of the extragalactic sky avoiding the ecliptic plane due to increased zodiacal background in its Wide Survey and use step and stare mode with four dither pointings per step (Euclid Collaboration 2022), plus 40 deg^2 split over three deep fields¹ with a depth increase by 2 mag.

NISP will obtain NIR imaging in Y , J , and H bands for photometric redshifts reaching 24 AB mag at 5σ for point sources in the Wide Survey, plus slitless spectroscopy for galaxy clustering studies with a flux limit of $3 \times 10^{-16} \text{ erg cm}^{-2} \text{ s}^{-1}$ at 3.5σ for a $1''$ diameter source.

VIS images will be taken across a broad 550–900 nm optical bandpass, reaching ~ 24.5 AB mag at 10σ for galaxies with a size larger than 1.25 times the full width at half-maximum (FWHM) of the PSF. These data will be used to obtain galaxy

¹ <https://www.cosmos.esa.int/web/euclid/euclid-survey>

shape measurements for weak lensing. In order to optimize the thermal stability and minimize temporal PSF variations for WL measurements, *Euclid* will observe from an orbit around the Sun-Earth Lagrange point L2. In addition, the variation of spacecraft orientations with respect to the Sun will be limited to maximize PSF stability.

For the WL analysis, galaxies need to be split into tomographic bins using photometric redshift. For this purpose, the *Euclid* data need to be combined with depth-matched multi-band optical observations taken, for instance, from ground-based wide-field imaging surveys. These optical color measurements are also needed to account for the color-dependence of the diffraction-limited VIS PSF when modeling the PSF and measuring galaxy shapes (Cypriano et al. 2010; Eriksen & Hoekstra 2018). Shape measurements based on VIS will also require at least statistical corrections for the impact of galaxy color gradients, which cannot be constrained individually from seeing-limited color measurements (Voigt et al. 2012; Semboloni et al. 2013; Er et al. 2018).

3. Synergies for weak lensing science

In this section, we present aspects of WL studies that may potentially benefit from joint analyses of the two missions described in this study.

3.1. Photometric redshifts

Accurate photo- z measurements have become an indispensable part of weak lensing cosmology (Hildebrandt et al. 2010, 2021; Newman et al. 2015; Tanaka et al. 2018; Myles et al. 2021). The accuracy of photo- z depends critically on the wavelength coverage and the filter bands employed in observations (Liu et al. 2017; Salvato et al. 2019). While optical bands are the core for photo- z measurements, the inclusion of NIR bands is important to improve photo- z for $z > 1$. Additionally, observations of u and NUV bands at shorter wavelength can reduce the low-redshift outlier fraction by correctly disentangling the 4000 Å break and the redshifted Lyman break and Lyman line features (Rafelski et al. 2015).

In particular, CSST has seven filters, consisting of NUV, u, g, r, i, z, y . For *Euclid*, there is a single broad VIS-band in the optical from 550–900 nm mainly for galaxy weak lensing shear measurements and three NIR bands Y, J, H for photo- z determination. The optimal utilization of the data from the two surveys can improve the photo- z accuracy substantially. In addition, the two space-based surveys have similar resolutions in optical bands and, thus, the complexity in image deblending can be much less than that of combining space- and ground-based data.

Below, we present our investigations on the photo- z accuracy by utilizing CSST and *Euclid* observations. For comparison, we also study combinations of *Euclid* and ground-based observations that match the characteristics of the LSST (Ivezić et al. 2019) and the Stage-III Dark Energy Survey (DES; Dark Energy Survey Collaboration 2016). Table 1 shows the band information and the designed performance parameters of each survey used in our analyses. In our study here, four setups are considered for the photo- z analyses: (1) CSST-only setup containing 7 optical bands, (2) *Euclid*+CSST setup with 11 optical and NIR bands, (3) *Euclid*+LSST-like setup having 10 optical and NIR bands, and (4) *Euclid*+DES-like setup consisting of 9 optical and NIR bands. As stated in Euclid Collaboration

(2020b), the *Euclid* WL shear sample is defined by a set of galaxies with VIS-band signal-to-noise ratio higher than 10, corresponding to the magnitude depth of $m_{\text{VIS}} < 24.5$ mag, and being not flagged as having bad photometry or active galactic nuclei (AGNs). In addition, with regard to the reliability of photo- z estimates, the *Euclid* shear sample is set to be in the range of $0.2 < z_{\text{phot}} < 2.6$. In this work, we apply the same criteria to analyze the photo- z accuracy. Detailed image simulation and photo- z measurements are presented as follows.

3.1.1. Method and simulations

For the photo- z analyses here, we generated simulated mocks based on the *Hubble* Deep UV (HDUV) Legacy Survey GOODS-N/CANDELS-Deep data catalog (Oesch et al. 2018). The sky area is 56.5 arcmin² centred on (RA, Dec) = (12^h37^m, 62°14′). The source detection of the HDUV catalog is based on the coadded images of the three HST WFC3 bands $F125W$, $F140W$ and $F160W$ with an average PSF $FWHM \sim 0''.19$ (Skelton et al. 2014). This is comparable to the resolution of the *Euclid* VIS-band and of the CSST bands and, thus, this catalog is very suitable for our studies. In contrast, for the COSMOS2015 sample (Laigle et al. 2016), which has been extensively used in photo- z studies (e.g., Rhodes et al. 2017; Cao et al. 2018), the source detection is primarily based on UltraVISTA NIR bands (McCracken et al. 2012) and Subaru z^{++} band (Taniguchi et al. 2015). These images have PSFs with a typical value of $FWHM \sim 0''.6$. This lower resolution has resulted in a lower number density of galaxies in the COSMOS2015 catalog than that of HDUV. For the purpose of our study on space-based *Euclid* and CSST surveys, photo- z analyses based on the high-resolution HDUV catalog are optimal.

With the HDUV catalog as the input, we use GALSIM, a flexible framework to simulate galaxy images (Rowe et al. 2015) to perform image simulations for different considered bands at the pixel level. We followed the procedure below.

First, we selected galaxies in the HDUV sample by setting the parameter `use_phot==1`, which combines a number of criteria, as described in Skelton et al. (2014), such as their “not being a star”, or “not being close to a bright star”, and so on. In real observations, bright stars can affect the photometry of nearby galaxies and may lead to catastrophic photo- z measurements. Therefore, for the purposes of WL studies, bright stars need to be masked with specified radii to reduce their effects (e.g., Kuijken et al. 2015). Here, we rely on the flag of `use_phot==1` in the original HDUV catalog, which already excludes galaxies close to bright stars. Therefore, the photometry of the selected galaxies should not be affected significantly (Skelton et al. 2014). In addition, in our simulation analyses, we only used the position and the SED information of the galaxies, and their images were generated with GALSIM. We therefore expect negligible impacts from bright stars on our studies. For real *Euclid* and CSST data processing, however, this issue needs to be carefully dealt with, which is beyond the scope of the current paper. After applying the cut, the resulting total number of galaxies is 13 790. For each galaxy, there are data from 24 bands covering a wavelength range from ~ 0.25 –8 μm (Oesch et al. 2018). The sizes and orientation parameters of these galaxies are the 3D-HST GOODS-N catalog (Skelton et al. 2014), which contains the relevant information measured from the coadded images of the three HST WFC3 bands $F125W$, $F140W$ and $F160W$.

Second, we estimated the SED of each individual galaxy in the above sample by fitting the multi-band data from HDUV

Table 1. Designed performance of CSST, *Euclid*, LSST, and DES.

Telescope/ project	Band	λ_{eff} (Å)	$\Delta\lambda$ (FWHM) (Å)	Detection limit (mag)	Pixel scale (arcsec)	PSF size (arcsec)
CSST ^(a)	NUV	2880	694	25.4		0.135
	<i>u</i>	3726	866	25.4		0.135
	<i>g</i>	4734	1455	26.3		0.135
	<i>r</i>	6107	1417	26.0	0.074	0.135
	<i>i</i>	7548	1465	25.9		0.145
	<i>z</i>	8975	1082	25.2		0.165
	<i>y</i>	9606	542	24.4		0.165
<i>Euclid</i> ^(b)	VIS	6726	3699	24.5	0.1	0.18
	<i>Y</i>	10 678	2665	24.0	0.3	0.62
	<i>J</i>	13 333	4052	24.0	0.3	0.63
	<i>H</i>	17 328	5023	24.0	0.3	0.70
LSST ^(c)	<i>u</i>	3734	623	26.1		0.81
	<i>g</i>	4731	1427	27.4		0.77
	<i>r</i>	6139	1359	27.5		0.73
	<i>i</i>	7487	1247	26.8	0.2	0.69
	<i>z</i>	8671	1022	26.1		0.68
	<i>y</i>	9677	855	24.9		0.71
	DES ^(d)	<i>g</i>	4734	1295	24.7	
<i>r</i>		6342	1485	24.4		0.95
<i>i</i>		7748	1480	23.8	0.263	0.88
<i>z</i>		9139	1475	23.1		0.83
<i>y</i>		9880	660	21.7		0.90

Notes. ^(a)The detection limits are the 5σ limiting magnitudes of point sources and the PSF sizes are the radii at 80% encircled energy (Zhan 2021); ^(b)For *Euclid* VIS band, the detection limit is the 10σ limiting magnitude of extended sources and the PSF size is defined as the FWHM, while for *Euclid* NIR bands, the limits are the 5σ limiting magnitudes of point sources and the PSF sizes are the radii at 80% encircled energy (Laureijs et al. 2011); ^(c)The detection limits for LSST bands are the 5σ depth of point sources after ten year observations and the PSF sizes are the FWHM (Ivezić et al. 2019); ^(d)The detection limits for DES bands are the 10σ depth of point sources and the PSF sizes are the FWHM (Abbott et al. 2021).

using the EAZY template fitting code (Brammer et al. 2008). We note that the original photo- z s of the HDUV galaxies were derived using the same code but with additional template optimization and zero-point corrections (Skelton et al. 2014; Oesch et al. 2018). Because optimized templates were unavailable, we did not use the photo- z information given in the catalog for obtaining the best-fit SED for a galaxy. Instead, we fit its photo- z and the SED simultaneously from its 24-band data using the fiducial set of EAZY templates, and we regarded them as the ground truth of the galaxy. Specifically, we took the peak value of the photo- z distribution of a galaxy, z_{peak} , from EAZY as its true redshift, denoted as z_{input} . We compared the derived z_{peak} with those in the original catalog and found them to be in generally good agreement, with a scatter $\sigma_{\text{NMAD}} = 0.018$ and the outlier fraction $\eta = 1.87\%$ (see definitions in Sect. 3.1.2). Although our photo- z s may not be as accurate as those given in the catalog due to the lack of a SED optimization, for the purposes of this study, our approach is self-consistent.

Third, with the best-fit SED for a galaxy from (2), EAZY calculates its flux in each band of the surveys considered in this study. These fluxes are adopted to generate the idealized images of the galaxy. Its intrinsic size σ is estimated by $\sigma = \sqrt{\sigma_o^2 - \sigma_{\text{psf}}^2}$, where σ_o is the half-light radius from the 3D-HST catalog mentioned in step (1), and σ_{psf} is the PSF half-light radius calculated from $\text{FWHM} = 0''.19$ assuming Gaussianity (Skelton et al. 2014). We then employed the bulge+disk model for galaxies and adopted the de Vaucouleurs profile for the bulge and the Sersic profile with $n = 1$ for the disk, and set their

intrinsic half-light radii both to be σ . In reality, bulge and disk can have different size distributions. But our simplified treatment here should not have significant impacts on our photo- z studies because the overall size of a galaxy is consistent with that of the 3D-HST measurement and the effect of color gradient is not considered in our analyses here. For the bulge to total flux ratio B/T, the input distribution in our simulations is taken to be consistent with that used in Miller et al. (2013). The bulge-dominated elliptical galaxies have B/T = 1 and account for 10% of galaxies. For the rest of disk-dominated galaxies, it is taken to be a truncated Gaussian distribution in the range of $0 \leq \text{B/T} < 1$ with the peak at B/T = 0 and the dispersion of 0.1. As discussed in Miller et al. (2013), this distribution is a reasonable representation of the observed bulge fraction found at low and high redshifts (e.g., Schade et al. 1996; Simard et al. 2002). With the position, size, and B/T information of a galaxy, we first simulated a circular image and then stretched it to an elliptical shape with an axis ratio and orientation consistent with the 3D-HST measurements (Skelton et al. 2014).

Then, for the model images from (3), circular Gaussian PSFs were applied to generate PSF-smear images². The PSF sizes of different bands of different surveys are listed in Table 1. We then use GALSIM to simulate galaxy multi-band images on pixels with the corresponding pixel scales also shown in Table 1.

² For the circular Gaussian PSF, the conversion between the FWHM and the radius r_c at a given percent (defined as 100c%) encircled energy is $\text{FWHM} = 2r_c \times \sqrt{\frac{\ln(2)}{\ln(1/(1-c))}}$.

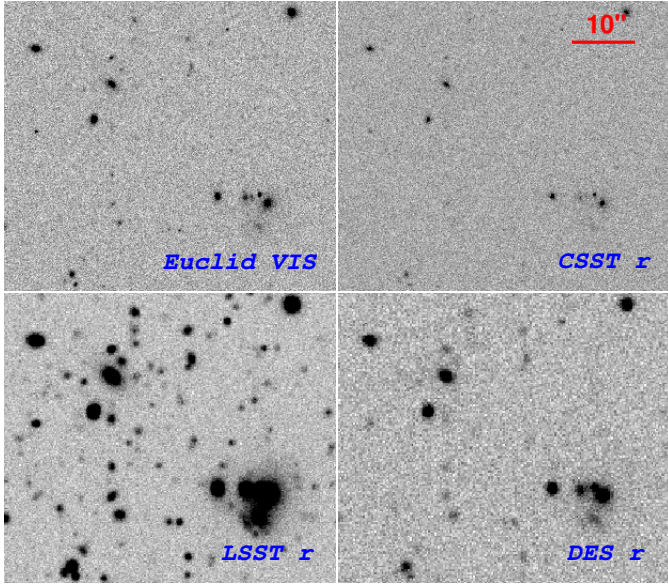


Fig. 2. Example of simulated images for *Euclid* VIS-band (upper left), CSST *r*-band (upper right), LSST-like *r*-band (lower left), and DES-like *r*-band (lower right), respectively.

The photon shooting method implemented in GALSIM enables us to include Poisson noise in the simulated galaxy images. The resulting flux counts between any two pixels are uncorrelated. The galaxy positions are taken to be the same as those given in the HDUV catalog.

Finally, different random Gaussian background noises are added to the images of different bands of different surveys to match their limiting magnitudes. Unlike real observations that normally need to stack multiple exposures to achieve the limiting magnitudes and thus introduce pixel-by-pixel noise correlations (e.g., Casertano et al. 2000; Leauthaud et al. 2007; Guo et al. 2013; Skelton et al. 2014), the random Gaussian background noise added here for each band is uncorrelated between adjacent pixels. Because of the simplicity in generating the simulated images, we did not generate separate weight maps that are typically needed in real observations to characterize the noise properties.

The input sample size from HDUV GOODS-N is relatively small, especially after applying a cut with *Euclid* VIS-band $\text{mag} < 24.5$. To control the impact of statistical fluctuations on the analysis results, for each survey, we generated 20 sets of images with different Gaussian noise realizations using different random seeds. We then regarded these 20 sets as independent mock images of the survey for photo-*z* analyses. This approach effectively suppresses the statistical uncertainties from noise. On the other hand, however, the cosmic variance intrinsic to the input catalog still exists.

In total, we generated 22 sets of mock simulations corresponding to the 22 different bands, 7 for CSST, 4 for *Euclid*, 6 for LSST-like setup, and 5 for DES-like setup. For each band, we have 20 sets of images with different noise realizations. Each image contains 13 790 input galaxies covering an area of 56.5 arcmin^2 from HDUV GOODS-N. Figure 2 shows examples of the simulated images for the *Euclid* VIS band, CSST *r* band, LSST-like *r* band, and DES-like *r* band, respectively. Different survey characteristics can clearly be seen. In particular, galaxies that are severely blended in ground-based observations can be better resolved in the two space-based surveys. In Fig. 3, we

present the synthetic magnitude distributions (left) of the four surveys and the distribution of the intrinsic half-light radius σ (right) of the simulated galaxies from step (3).

With the mock images, we performed a galaxy detection process based on the *Euclid* VIS images employing SExtractor and determined the 2D elliptical aperture, known as the Kron radius (Kron 1980), in units of arcsec for each galaxy. The parameters of the scaling factor k and the minimum radius R_{min} of a Kron ellipse in PHOT_AUTOPARAMS are set to be the default values of 2.5 and 3.5, respectively (Bertin & Arnouts 1996). The corresponding flux and magnitude enclosed within the elliptical aperture are defined as FLUX_AUTO and MAG_AUTO in SExtractor, respectively. Figure 4 shows the SExtractor MAG_AUTO magnitude distribution of the detected galaxies in the solid histogram, while the dashed histogram corresponds to the distribution of galaxies with signal-to-noise (S/N) ratio above 10. The S/N is defined by the inverse of the magnitude error MAGERR_AUTO, that is, $S/N = 1.0857/\text{MAGERR_AUTO}$, which is a robust estimate here because the noise correlations is not presented in our simulated images (Newberry 1991; Bertin & Arnouts 1996). This figure shows that substantial incompleteness occurs for $\text{MAG_AUTO} \geq 24$, approximately matching the designed limit for *Euclid*. From the 20 sets of *Euclid* VIS images, we obtained the average number of detected galaxies with $\text{MAG_AUTO} < 24.5$ being 1852 in the area of 56.5 arcmin^2 . The corresponding number density is $\sim 32.8 \text{ arcmin}^{-2}$, which is well in line with the *Euclid* specification. For comparison, we also performed a series of parallel mock simulations using the COSMOS2015 catalog as the input. The corresponding number density of *Euclid* VIS-detected galaxies is 17.5 arcmin^{-2} , which is much lower than the value seen in our fiducial simulations based on the HDUV catalog.

With the aperture determined from the VIS band, we performed a forced photometry for each galaxy in the other bands. To ensure that the flux measurements from different bands contain the same fraction of the total flux, we perform PSF homogenization for all the bands. In our analyses, we assume the PSFs of different bands follow the two-dimensional circular Gaussian function, and thus the homogenization kernels are also Gaussian. Therefore for a certain band j , the kernel size σ_{kernel} can be derived as $\sigma_{\text{kernel}} = \sqrt{\sigma_0^2 - \sigma_j^2}$, where σ_j is the PSF size of the band j , and σ_0 is the size of the target PSF (denoted as PSF₀). We then convolved the image of band j with the Gaussian kernel to get the PSF homogenized image via the convolve_fft function implemented in Astropy, a community Python package for astronomy (Astropy Collaboration 2013). To validate the quality of the convolution, we calculated the fractional error $(\text{PSF}_j^{\text{conv}} - \text{PSF}_0)/\text{PSF}_0$, where $\text{PSF}_j^{\text{conv}}$ is the convolved PSF of band j . It turns out that the fractional error is less than 10^{-4} , indicating that the PSF homogenization is accurate. We note that for real observations, the PSF profiles can be more complicated. Thus the PSF homogenization needs to be done with sophisticated care (Hildebrandt et al. 2012; Skelton et al. 2014; Wright et al. 2019).

The specific PSF homogenizations for different data sets are as follows. For the CSST-only setup, the homogenization is based on the CSST *y*-band PSF which has the largest size with $\text{FWHM} = 0''.22$. For the *Euclid*+DES-like setup, the DES-like *g*-band PSF is used for homogenization. For the *Euclid*+LSST-like setup, we use the *Euclid* *H*-band PSF for the homogenization. For the *Euclid*+CSST, because the large difference between the PSF sizes in the optical and NIR bands, we adopt a similar strategy as in Skelton et al. (2014) to perform homogeneous

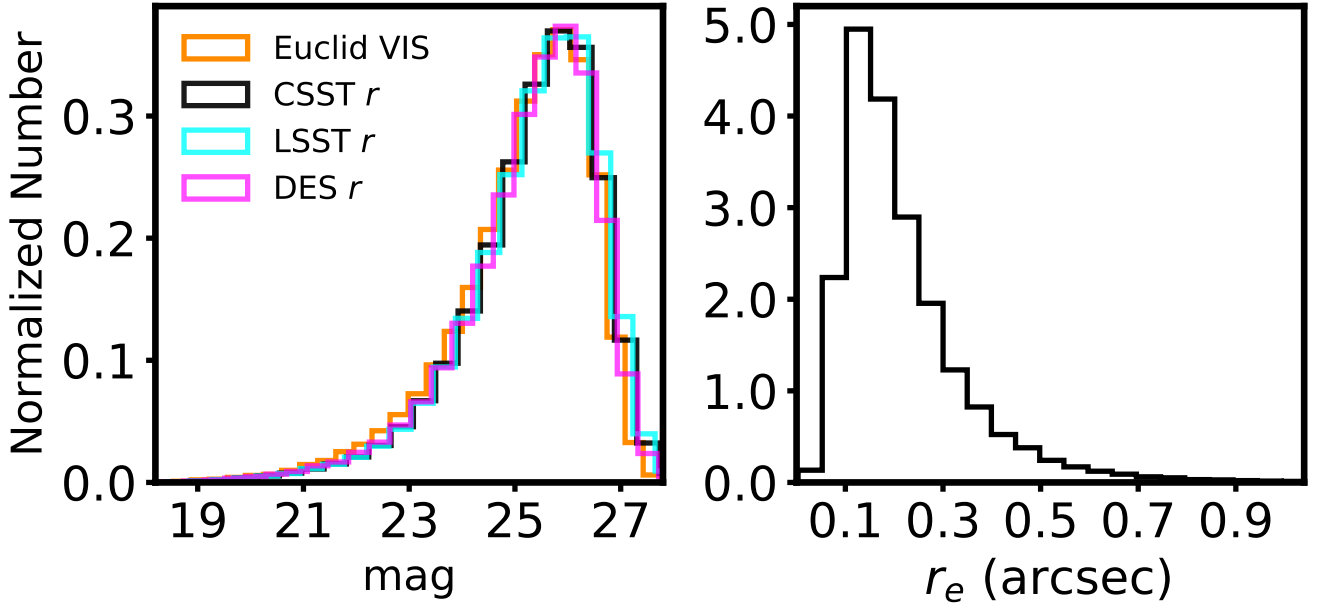


Fig. 3. Input magnitude distributions in the *Euclid* VIS-band and the r bands of the CSST, LSST-like, and DES-like setups (*left*) and the size distribution (*right*) of the simulated galaxies.

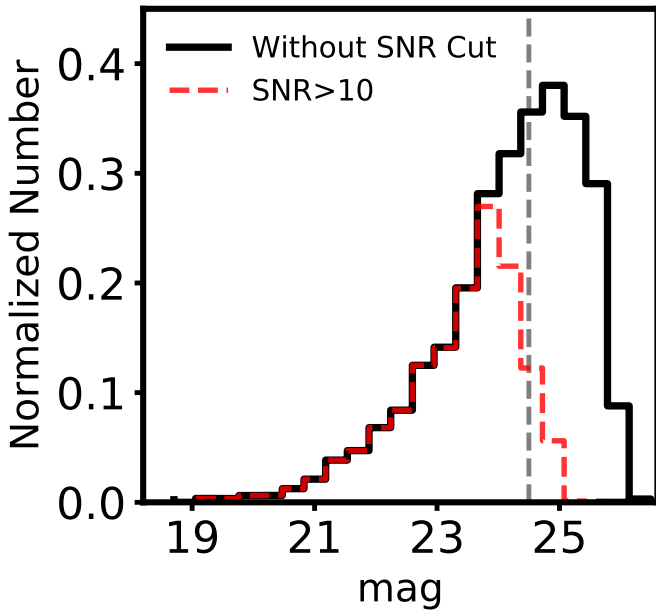


Fig. 4. Magnitude distribution of the detected galaxies from *Euclid* VIS-band images (black) and those with $S/N > 10$ (red). The vertical dashed line is for $\text{mag} = 24.5$.

photometry. For the CSST and *Euclid* optical bands, we homogenize the images based on the CSST y -band PSF, while for the *Euclid* NIR images, the homogenization is based on the H -band PSF.

Because of the different treatment in the case of *Euclid*+CSST, we need to convert the measured aperture flux to the total flux of a galaxy. This is done using

$$f_j = f_{\text{VIS}} / \tilde{f}_{\text{VIS}}^j \times \tilde{f}_j, \quad (1)$$

where the scaling factor $f_{\text{VIS}} / \tilde{f}_{\text{VIS}}^j$ is the ratio of the total galaxy flux measured from the mock *Euclid* VIS images without PSF

homogenization and the aperture flux of the corresponding PSF-homogenized *Euclid* VIS images, and \tilde{f}_j is the aperture flux measured from the homogenized images of band j . The FLUX_AUTO measured by SExtractor is used as the representation of the total flux f_{VIS} of the galaxy. The aperture flux is measured by a circular aperture of radius $r = b / \sqrt{2}$, where b is the semi-minor axis of the Kron ellipse which is used to measure the total flux f_{VIS} . Since the Kron ellipses are different for different galaxies, the circular apertures are adaptive for different galaxies. We tested this by applying different circular aperture settings, with $r = n \times b / \sqrt{2}$, where n ranges from 0.6 to 2.0, with a step of 0.2, and we found that $n = 1$ gives the best photo- z results (presented in Sect. 3.1.2). The photo- z analyses with fixed apertures for all galaxies are also discussed in the next section. After the PSF homogenization the PSFs of the *Euclid* VIS images and the band j images are expected to be identical. For the CSST and *Euclid* optical bands, \tilde{f}_{VIS}^j is the aperture flux measured from the VIS-band images after being homogenized to the CSST y -band PSF, while for the *Euclid* NIR bands, \tilde{f}_{VIS}^j is measured from the VIS-band images after being homogenized to the H -band PSF. For the other three setups, we also apply the conversion with the ratio being the same for all bands because a uniform homogenization is applied.

We note that unlike the original simulated images, the PSF homogenization procedure can result in correlated noise between adjacent pixels. The flux errors measured by SExtractor are therefore underestimated since it does not consider the correlated noise (e.g., Leauthaud et al. 2007). To estimate the flux errors in the presence of correlated noise, we followed the method as in Skelton et al. (2014) which is also adopted in many other studies (e.g., Gawiser et al. 2006; Liu et al. 2017). For a specific aperture, the flux errors of galaxies in the PSF homogenized images of band j can be estimated by:

$$\sigma_{\tilde{f}_j} = \sqrt{\tilde{f}_j + A^{2\beta} \sigma_{\text{bkg}}^2}, \quad (2)$$

where A is the pixel area in a given photometric aperture, σ_{bkg} is the standard deviation of the background noise, and β is the

correlation parameter to be determined. In the case of no correlation presented, $\beta = 0.5$, which is the formula used in SExtractor. On the other hand, if the adjacent pixels are perfectly correlated, $\beta = 1.0$. Generally, the value of β is within the range of $0.5 < \beta < 1.0$. To determine the β value of band j , we randomly generated a set of >2000 positions on the image that do not overlap with the detected objects. The fluxes are then measured for each position with different apertures. For a given aperture, a Gaussian function is applied to fit the distribution of the measured fluxes to derive the noise dispersion σ . It turns out that this dispersion σ gets larger with the increase of aperture size. We then use the power-law equation $\sigma \sim A^\beta$ to fit the measured noise dispersion to find the best-fit value of β . The derived β values, typically ranging from 0.5 to 0.6 for different bands, are applied to Eq. (2) to calculate the flux errors. Finally, the flux errors are corrected to total σ_{f_j} in the same way as for the fluxes (see Eq. (1) above).

For photo- z measurements with EAZY, we used the f_j and corresponding σ_{f_j} as input and denoted the obtained photo- z as z_{output} . Since the purpose of this work is to compare the photo- z s under different survey setups, we ran EAZY with the same input configuration used to generate the SED templates. The configuration here ignores the template uncertainties in photo- z estimates, which is different from real cases in that the optimizations of SED templates are necessary to improve the photo- z quality as the real galaxy SEDs are not exactly the same as the input templates (Skelton et al. 2014).

3.1.2. Results

We show our photo- z results in Fig. 5, where the upper left and right panels are for CSST-only and *Euclid*+CSST, and the lower left and right ones are for *Euclid*+LSST-like and *Euclid*+DES-like setups, respectively. Here, the top plots show the results from data with a specific noise realization, while the bottom plots present the scatters from 20 sets of data with different noise realizations as described in the step (5) in Sect. 3.1.1. The vertical stripes seen in the bottom plots reflect the statistical fluctuations of different noise realizations. The photo- z statistics for galaxies with $\text{VIS} < 24.5$ and $0.2 < z_{\text{output}} < 2.6$ are shown in Table 2. Here we use the conventional definitions with the bias given as

$$b = \left\langle \frac{\delta z}{1 + z_{\text{input}}} \right\rangle, \quad (3)$$

with $\delta z = z_{\text{output}} - z_{\text{input}}$, the normalized median absolute deviation of the residuals σ_{NMAD} calculated by

$$\sigma_{\text{NMAD}} = 1.48 \times \text{median} \left[\frac{|\delta z - \text{median}(\delta z)|}{1 + z_{\text{input}}} \right], \quad (4)$$

and the outlier fraction η being the fraction of galaxies with

$$\frac{|\delta z|}{1 + z_{\text{input}}} > 0.15. \quad (5)$$

Because of the deeper limiting magnitudes of the LSST-like survey after 10 yr of observations, the *Euclid*+LSST-like case gives the best photo- z accuracy with $\sigma_{\text{NMAD}} \approx 0.018$ and $\eta \approx 0.83\%$ considering galaxies with $S/N > 10$ in at least one of the LSST g or i bands. For the *Euclid*+DES-like setup, the numbers are 0.054 and 12.87%. For the combination of the two space missions, *Euclid*+CSST, we have $\sigma_{\text{NMAD}} \approx 0.04$, and $\eta \approx 2.39\%$. For the CSST-only setup, $\sigma_{\text{NMAD}} \approx 0.048$ and $\eta \approx 8.45\%$. It is seen that for CSST, adding the *Euclid* NIR bands

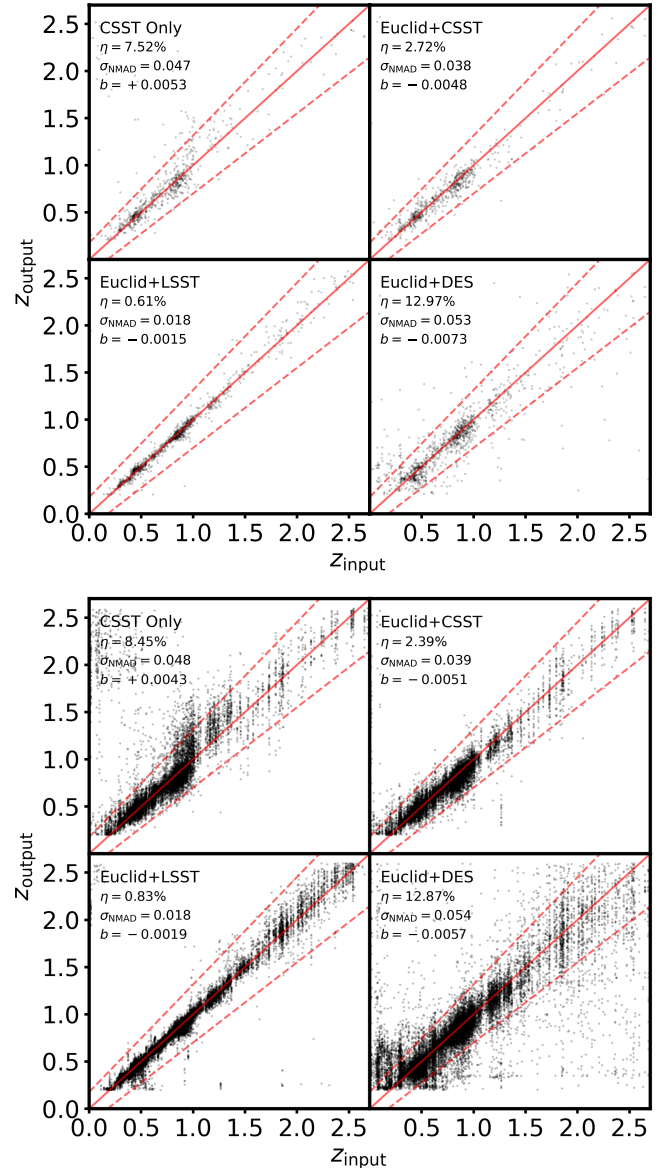


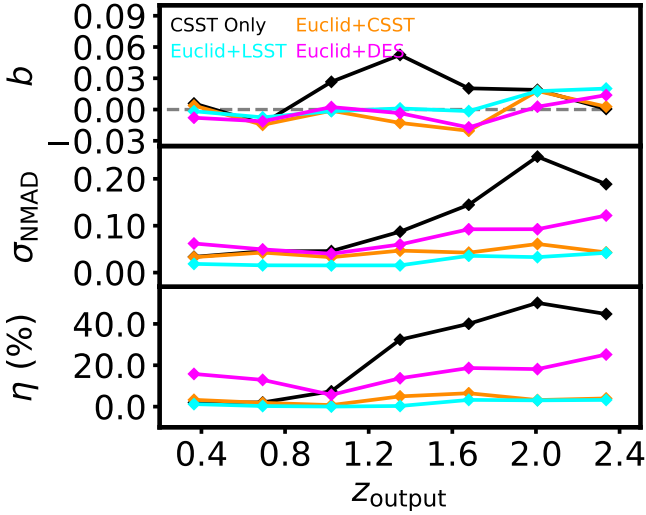
Fig. 5. *Top:* photo- z results from data with only one noise realization. Each panel shows the z_{output} vs. z_{input} for CSST-only (*upper left*), *Euclid*+CSST (*upper right*), *Euclid*+LSST-like setup (*lower left*) and *Euclid*+DES-like setup (*lower right*), respectively. The red solid and dashed lines indicate $z_{\text{photo}} = z_{\text{input}}$, and $|\delta z|/(1 + z_{\text{input}}) = 0.15$, respectively. *Bottom:* photo- z results from 20 sets of data with different noise realizations.

can improve the photo- z measurements significantly, reducing the outlier fraction by more than a factor of 3.

In Fig. 6, we show b , σ_{NMAD} and η at different redshifts z_{output} . By comparing the results of *Euclid*+CSST with that of CSST-only, all the three photo- z statistics are improved significantly for $z_{\text{output}} > 1$ by including the NIR bands. As discussed extensively in the literature (e.g., Stabenu et al. 2008; Salvato et al. 2019; Newman & Gruen 2022), the absence of ultraviolet or NIR data can result in difficulties in correctly identifying the Balmer and Lyman breaks in a galaxy SED. This will introduce large photo- z errors. In our study, this problem is more significant for the photo- z result of CSST-only setup because of the lack of NIR bands. This leads to larger b , σ_{NMAD} and η at $z > 1$ than the other cases, as shown in Figs. 5 and 6.

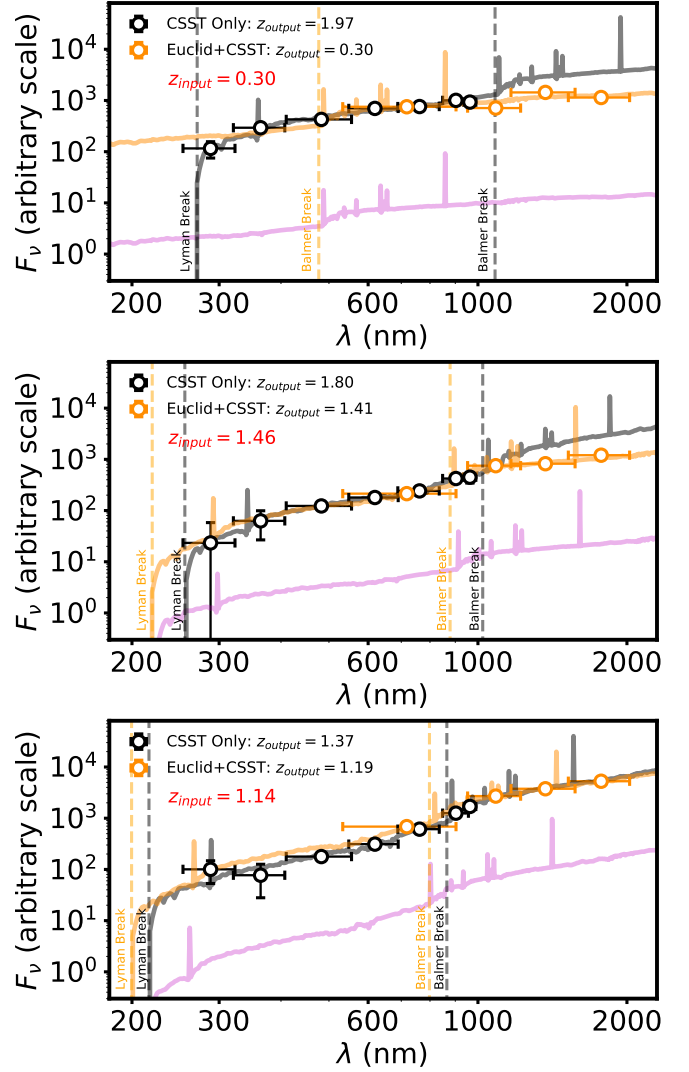
Table 2. Photo- z statistics in different cases.

Combination	Bias	σ_{NMAD}	η
CSST-only	+0.0043	0.048	8.45%
<i>Euclid</i> +CSST	-0.0051	0.039	2.39%
<i>Euclid</i> +LSST-like	-0.0019	0.018	0.83%
<i>Euclid</i> +DES-like	-0.0057	0.054	12.87%


Fig. 6. Redshift dependence of the bias, σ_{NMAD} and the outlier fraction η for different combinations of surveys. The horizontal dashed line in the top panel indicates $b = 0$.

We checked the large outlier part in the upper left corner of the CSST-only case in Fig. 5 and, in particular, we analyzed multiple cases in the region of $1 < z_{\text{input}} < 1.5$, where the CSST-only photo- z s show relatively large positive biases b . It is noted that for $1 < z_{\text{input}} < 1.5$, the Balmer break and most of the emission lines except Ly α are redshifted to the wavelength longer than i -band; thus it is difficult to identify them accurately without NIR data. Furthermore, the true Lyman break is still in the blue side of NUV, and thus hard to be located correctly. The trend with relatively large photo- z biases in this redshift range with optical data only is also shown in, for instance, Salvato et al. (2019) and Cao et al. (2018). In Fig. 7, a few examples are presented to illustrate clearly the reasons for the bias in the CSST-only case and the effects of NIR data. There the best-fit SEDs in the CSST-only (black) and *Euclid*+CSST (orange) cases, as well as the input SEDs (purple), are shown.

The top panel of Fig. 7 is for a case with the CSST-only photo- z result drastically wrong by assigning a high $z_{\text{output}} = 1.97$ to a low-redshift galaxy with $z_{\text{input}} = 0.3$. The middle panel shows a case with $z_{\text{input}} = 1.46$ and the CSST-only $z_{\text{output}} = 1.80$. For these two cases, the SED behaviours are similar. With the CSST-only data, the Balmer break feature cannot be located well, and the best-fit redshifted SED gives rise to relatively higher NIR fluxes than the input SED. The Lyman break position (left black vertical line) is determined to be closer to CSST NUV than the true one, leading to higher z_{output} than z_{input} . Adding *Euclid* NIR data, the NIR part of the SED is better fitted and the Balmer break as well as the Lyman break positions (vertical orange lines) can be correctly identified. As a result, the best-fit SED and consequently the photo- z from *Euclid*+CSST are in


Fig. 7. Three examples illustrating the best-fit SEDs and photo- z s in the case of CSST-only (black) and that in *Euclid*+CSST (orange). The original SEDs of the galaxies (purple) are shifted down for clarity. In each panel, the vertical black and orange dashed lines from left to right indicate the Lyman break and Balmer break of the best-fit SED from the CSST-only and the *Euclid*+CSST setups, respectively. The black and orange dots represent the fluxes of CSST and *Euclid* bands, respectively. The error bar of each dot along the horizontal axis represents the FWHM of that band, while the error bar along the vertical axis represents the photometric error.

better agreement with the input ones. The bottom panel of Fig. 7 shows another case with $z_{\text{input}} = 1.14$ where the CSST-only best-fit SED has about the correct shape in NIR, as compared to the input one, but the Lyman break position is determined to be at a somewhat longer wavelength, and thus a higher $z_{\text{output}} = 1.37$. In this case, the inclusion of *Euclid* NIR adds weights to adjust the overall SED, including the two break positions and delivering a better photo- z of $z_{\text{output}} = 1.19$.

For the combinations of *Euclid* with LSST-like, CSST, and DES-like setups, respectively, over the entire redshift range, both σ_{NMAD} and η are the largest for the case of *Euclid*+DES-like. It should be noted that in our analyses, the same set of templates are used in generating the input fluxes in different bands and in the photo- z fitting. Thus, the overall small bias here is largely due to photometric errors. In real situations, if the true SEDs

of some galaxies are not included in the templates, their photo- z bias from template fitting can be significantly larger than the numbers shown here.

We emphasize that our purpose here is to compare different data combination, thus the relative differences in photo- z accuracy between different cases are more meaningful to our study. While the absolute photo- z accuracy can be sensitive to the adopted methods and codes (Hildebrandt et al. 2010; Euclid Collaboration 2020b; Zhou et al. 2021), the relative accuracy should depend mainly on the data used. Therefore, we only used the EAZY template fitting code to do the photo- z analyses here and left the thorough investigations on photo- z measurement methods to future studies.

It should also be noted that in our analyses, we did not consider the effect of AGNs. Studies have shown that galaxies hosting AGNs generally have worse photo- z quality (e.g., Salvato et al. 2019). At high redshifts, faint AGNs cannot be easily identified (e.g., Malek et al. 2013; Golob et al. 2021). Thus their flux contaminations to their host galaxies can lead to errors in the photo- z estimation. MacDonald & Bernstein (2010) studied the photo- z bias induced by AGN contamination and concluded that this bias can potentially corrupt the derived cosmological parameters, especially for future WL surveys reaching deeper limiting magnitudes. As described in Sect. 3.1, *Euclid* selects its shear sample with one of the criteria by requiring that the galaxies therein should not be flagged as AGNs (Euclid Collaboration 2020b). This can mitigate the AGN-induced photo- z bias to some extent. However, for unidentified AGNs, their effects on photo- z measurements need to be addressed in future studies.

In addition, we also did not perform careful deblending for ground-based images. On the other hand, to suppress the blending effects on ground-based photometry, we employ the positions and apertures measured from high-resolution *Euclid* VIS simulated data for flux measurements on LSST-like or DES-like images. A potential problem for such an approach is that for some galaxies, the *Euclid* VIS apertures can be too small for the two ground-based-like images and, thus, their measured S/N are sub-optimal.

To see the impact of photometric apertures, we measured galaxy fluxes using different apertures taken to be ND , where N is a factor and D is the FWHM of the PSF after homogenization. Specifically, $D = 0''.92, 1''.11, 0''.92$ and $0''.22$ for the case of *Euclid*+LSST-like, *Euclid*+DES-like, *Euclid*+CSST, and CSST-only, respectively. As explained previously, for *Euclid*+CSST, high-resolution images from CSST and the *Euclid* VIS-band as well as the PSF homogenized *Euclid* Y, J, H -band images are used in the photo- z analyses. Thus, we take $D = 0''.92$ here, which is the FWHM of the *Euclid* H -band PSF used in the Y, J, H homogenization. The aperture flux in each band is scaled to the total flux with Eq. (1).

We calculated the S/N variations with the change of N for LSST-like galaxies. Unlike point sources, galaxies have various intrinsic sizes and the dependence of their S/N on the aperture size can be different. We therefore binned galaxies based on their intrinsic size σ defined in the simulation step (3), and calculated the average S/N within a bin. We further note that galaxies of similar size can have a range of intrinsic luminosity. To clearly illustrate the aperture effect on S/N, for each LSST-like galaxy, we calculated the ratio of the S/N measured within an aperture diameter ND to that measured within the *Euclid* VIS aperture, that is $(S/N)_{ND}/(S/N)_{VIS}$. The results are shown in Fig. 8, where the lines are the average and the shaded regions are the corresponding dispersion. It can be seen that

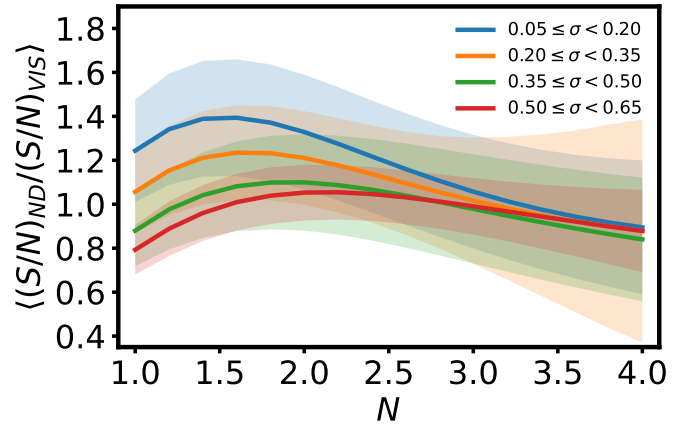


Fig. 8. S/N variations with the change of the photometric aperture. The lines represent the average and the shaded regions are the corresponding dispersion within the bins.

for galaxies with $\sigma > 0''.35$, the optimal aperture is about $2D$ where $(S/N)_{ND}/(S/N)_{VIS} \approx 1$. In other words, for these relatively large galaxies, using *Euclid* VIS aperture is a good choice. For smaller galaxies, S/N reaches the maximum at $\sim 1.5D$ and $(S/N)_{ND}/(S/N)_{VIS} \sim 1.2-1.4$, that is *Euclid* VIS apertures are sub-optimal for LSST-like images homogenized to a PSF with FWHM $D = 0''.92$.

To illustrate the impact of the aperture on the photo- z , we show the dependence of σ_{NMAD} and η on the aperture parameter N in Fig. 9 for different cases. There we also show the results of *Euclid*+LSST-like setup, using LSST-like data of different depths, which correspond to different years of accumulation. We see that for both *Euclid*+LSST-like and *Euclid*+DES-like, σ_{NMAD} and η are nearly flat for $N \leq 2$ and their values are very close to the ones shown in Table 2 using *Euclid* VIS apertures. This seems to indicate that although *Euclid* VIS apertures are not optimal for small galaxies, their effects on photo- z are not very significant. Increasing the aperture factors from $N = 2$ to $N = 4$, the outlier rate η increases considerably, for the case of *Euclid*+LSST-like by factors of ~ 3 to 5 for LSST-like Year01 to Year10. The σ_{NMAD} also increases by about a factor of 1.5. These trends are largely attributed to the light blending of nearby galaxies plus the reduced S/N at large apertures as shown in Fig. 8. Similar behaviours are seen for the results of the *Euclid*+DES-like case. For *Euclid*+CSST, the changes of η and σ_{NMAD} are much flatter over the whole range from $N = 1$ to $N = 4$. This is because the high resolution optical images from CSST and *Euclid* VIS are much more compact than those of LSST-like or DES-like setups and, therefore, the light blending effect is much weaker, even with similar photometric apertures. In terms of the outlier rate η , *Euclid*+CSST can reach approximately the same accuracy as that of *Euclid*+LSST-like Year02 data when using an aperture diameter less than $\sim 2D$.

We need to point out that accurate multi-band photometric measurements are challenging and should be carefully investigated based on the specific data characteristics. Our analyses here, either using *Euclid* VIS apertures in our fiducial analyses or the tests using different fixed apertures, are somewhat sub-optimal in the sense that we do not perform detailed aperture optimization band by band and galaxy by galaxy. With more sophisticated optimizations (e.g., Kuijken 2008; Kuijken et al. 2015; Wright et al. 2016; Bosch et al. 2018; Huang et al. 2018; Sevilla-Noarbe et al. 2021), the photo- z statistics may be further improved compared to the results shown here. Although we do

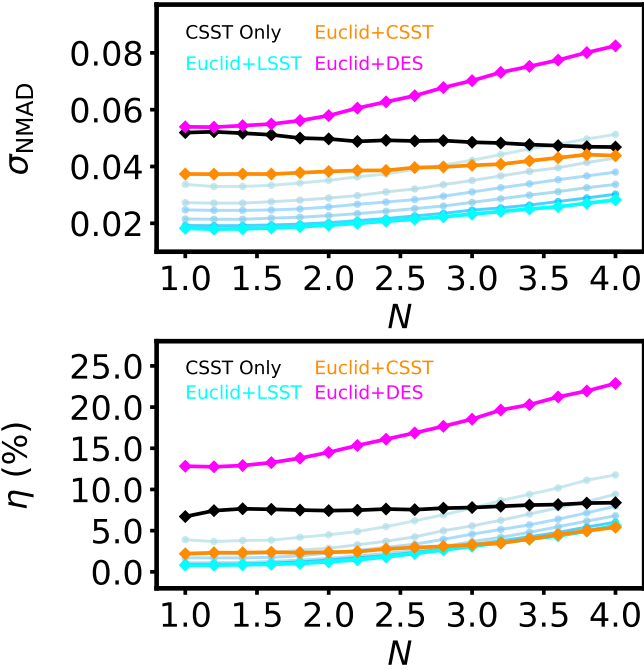


Fig. 9. Effects of the size of the photometric aperture on σ_{NMAD} and η . For the *Euclid*+LSST-like setup, lines with similar colors from top to bottom show the results from LSST-like mock data corresponding to Year01 to Year10.

not expect qualitative changes of our conclusions, quantitative studies and comparisons with different photometric measurements will be desired for the purposes of future investigations.

We emphasize again that we did not perform any careful deblending for ground-based-like images. The performance of photo- z in the case of *Euclid*+LSST-like (DES-like) can be improved by employing sophisticated approaches for accurate photometric measurement. On the other hand, for the data combination of *Euclid* and CSST, the blending in optical bands is minimal and, thus, the photometric measurements can be relatively straightforward.

3.2. Blended galaxies

As we discussed in the previous section, with the increase of observational depth, blended galaxies for ground-based observations are becoming increasingly problematic when seeking to obtain accurate photometry. For HSC, the estimated fraction of blended galaxies is about 58% (Bosch et al. 2018) and for LSST, the fraction will be even higher. To achieve high-precision cosmological results from galaxy imaging surveys, sophisticated deblending algorithms are critically needed.

In SExtractor, the deblending is done on single-band images by using a tree structure to find sub-objects with the intensity above a certain fraction δ_c of the total intensity of the composite object. The intensity of overlapping pixels are assigned to different sub-objects according to bivariate Gaussian fits to the sub-objects (Bertin & Arnouts 1996). In recent years, more advanced methodologies have been developed. For example, MuSCADET (Joseph et al. 2016) and SCARLET (Melchior et al. 2018) utilize multi-band pixel information for deblending and, thus, galaxy SEDs are taken into account. However, similarly to SExtractor, these methods still make certain assumptions about galaxy properties. Another line of study is to use machine learning for deblending, which, on

the one hand, can avoid overly simplifying assumptions about galaxies. On the other hand, appropriate training sets are crucial for machine learning approaches (Reiman & Göhre 2019; Arcelin et al. 2021; Farrens et al. 2022).

In this regard, space observations with high resolution are clearly advantageous in reducing the fraction of blended galaxy images and, thus, simplifying the photometric measurements. To explore the advantages of utilizing data from the two space missions to control blending, we created a set of dedicated simulations, which differ from the simulations presented in Sect. 3.1.1. We start here from HST/CANDELS GOODS-N images of *F606W* and *F814W* (Giavalisco et al. 2004; Grogin et al. 2011; Koekemoer et al. 2011). The effective area is about 158 arcmin². These image stacks have been created using 0''.06 pixels. We synthesize *Euclid* VIS and CSST *r*-band images from them. For comparison, we also generate LSST *r*-band images.

Specifically, to generate *Euclid* VIS images, we first combined CANDELS *F606W* and *F814W* pixel data using linear interpolation as follows:

$$I_0^{\text{VIS}} = w \left[\frac{\lambda - \lambda_1}{\lambda_2 - \lambda_1} \frac{\mu_2 f_2}{w_2} + \frac{\lambda_2 - \lambda}{\lambda_2 - \lambda_1} \frac{\mu_1 f_1}{w_1} \right], \quad (6)$$

where $\lambda_1 = 606$ nm, $\lambda_2 = 814$ nm, and $\lambda = 725$ nm are the central wavelengths of *F606W*, *F814W*, and the *Euclid* VIS band, respectively. The zero-points related to the rescaling of *F606W* and *F814W* are μ_1 and μ_2 . We took $\mu_1 = 1$ and, thus, $\mu_2 = 10^{-0.4(z_{p2} - z_{p1})}$ with z_{p_i} the zero points for the two CANDELS bands. The corresponding widths of the three bands are w_1 , w_2 , and w . For the CSST *r* and LSST *r* bands, we simply used the CANDELS *F606W* images, ignoring the slight band difference.

We then convolved these idealized images, labeled as I_0 , with the corresponding PSF, and resample them according to the pixel scales of *Euclid* VIS, CSST *r*, and LSST *r* bands, respectively, with the parameters listed in Table 1. We denote these PSF- and pixel-scale-matched images as I_1 . In the last step, we add Gaussian noises to I_1 according to the three survey depths to generate the final I_2 images. In this simulation setting, we assume that the HST CANDELS images are ideal without considering their own PSF and noise. For the purpose of analysing blending effects of different surveys, this simplification should not affect the results significantly.

In Fig. 10, we show examples of the simulated images, where the left panels are I_0 images and the right ones are the corresponding I_1 images. It is seen clearly that both *Euclid* VIS and CSST *r* band observations can resolve galaxies similarly to the HST CANDELS data. For ground-based LSST-like data, however, the blending effect is much more severe.

Figure 11 shows a quantitative approach to the blending statistics. Here, we performed source detection using SExtractor on I_2 images for the three cases separately. The dashed lines show the results with the blended galaxies defined using the SExtractor FLAGS=1 and 2, and the values containing the contributions from these two flags. Here, FLAGS=1 indicates a likely contamination of the aperture photometry by neighbouring sources and FLAGS=2 shows that the object has been deblended (Bertin & Arnouts 1996). The solid lines present the blending statistics defined as the occurrence of overlapping between 2.5 times expanded Kron ellipses with neighbouring galaxies. The upper and lower panels show the dependence of the cumulative number density of blended galaxies on the magnitude and the corresponding fractions. We note that the horizontal axis shows the magnitude of the galaxies we are concerned with.

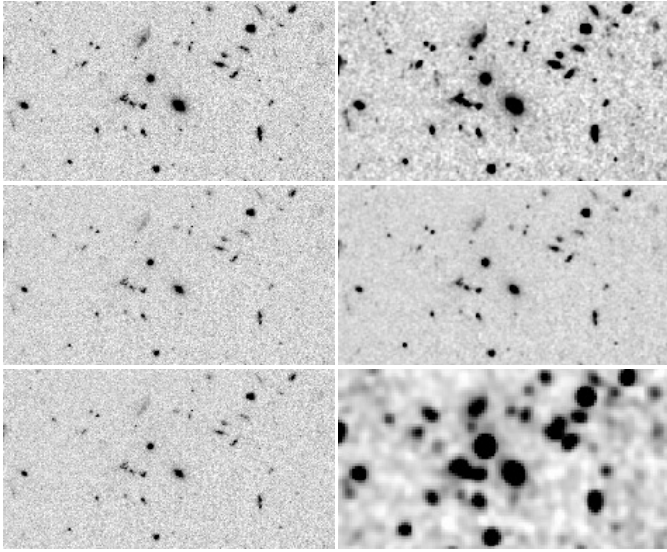


Fig. 10. Examples of I_0 (left column) and I_1 (right column) images for *Euclid* VIS (top row), CSST r (middle row), and LSST r -band (bottom row), respectively.

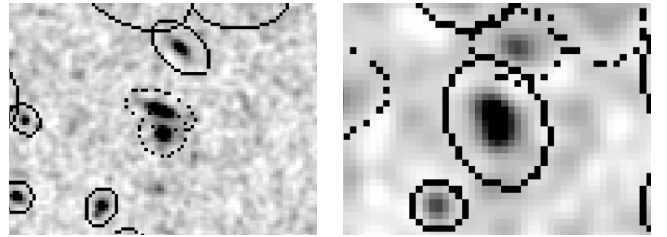
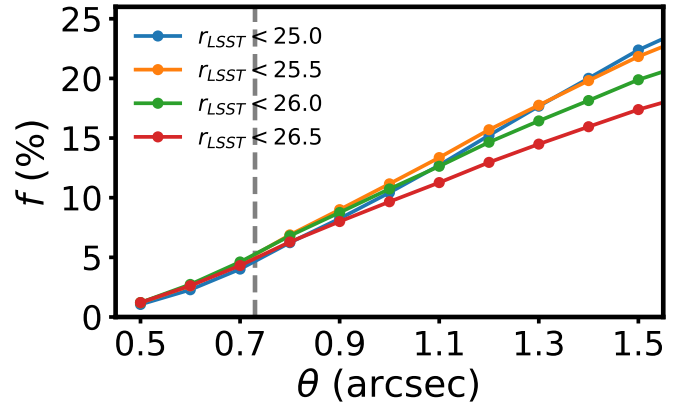


Fig. 12. Fraction of total blends for the LSST-like I_1 images estimated by matching to *Euclid* VIS galaxies. Top: fraction of total blends as a function of the matching radius. The horizontal axis is the matching radius and the vertical dashed line indicates $\theta = 0.73''$, approximately the PSF FWHM of LSST-like data. Bottom: example of total blends with left and right being the simulated *Euclid* VIS and LSST-like r -band images, respectively. SExtractor Kron ellipses are overlaid for the detected objects.

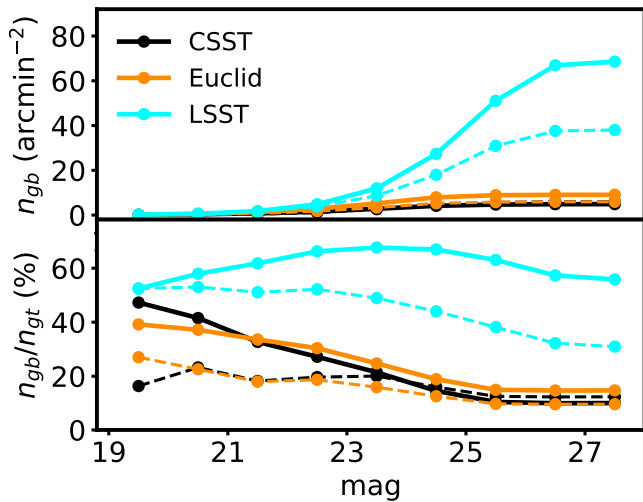


Fig. 11. Cumulative number density of blended galaxies, n_{gb} , as a function of magnitude for different cases (upper panel) and the corresponding fractions relative to the total detected number densities of galaxies n_{gt} at the same magnitude cut as n_{gb} (lower panel). The dashed and solid lines are the results using SExtractor flags and the overlapping of 2.5 times expanded Kron ellipses, respectively.

To judge whether they are blended, however, we are not limited to this magnitude, but instead we used all detected galaxies. We can see that for LSST-like images, the number density of blended galaxies can reach about 30–50 arcmin^{-2} at $\text{mag} \sim 26$, depending on the definition of blending. For *Euclid* and CSST, the corresponding number density is about 5 arcmin^{-2} . The blended fraction is computed as the ratio of the numbers shown in the upper panel and the corresponding total detected number densities of galaxies at the same magnitude cut. It is $\sim 10\%$ at $\text{mag} < 26$ for both *Euclid* and CSST, while for the LSST-like data, it is in the range of 40% to 60%.

In the above analyses, the source detection and the blending identification are done independently for each of the three sets of mock survey simulations. There can be cases that two or more close-by galaxies in a high-resolution image are identi-

fied as a single galaxy in a low-resolution LSST-like image. We refer to these as total blends and they cannot be correctly calculated in Fig. 11. To calculate the fraction of total blends for the LSST-like case, we performed analyses by matching the *Euclid* VIS I_1 detected galaxies with those detected from LSST-like I_1 images. Specifically, we first performed a double-match with a given matching radius between *Euclid* VIS and LSST-like galaxies and then removed those matched ones from the *Euclid* VIS galaxy catalog. For the remaining galaxies, we perform a second double-match with the full LSST-like galaxy catalog. If two *Euclid* galaxies are matched to a single LSST-like galaxy, we regard the latter as a total blend. In Fig. 12, the bottom panels show an example of total blends with the left and right panels being *Euclid* VIS- and LSST-like r -band images, respectively. The top panel shows the fraction of total blends in the LSST-like case with respect to the matching radius θ . For $\theta \sim 0''.73$, the size of the LSST-like PSF FWHM, the fraction is about 5%, and it increases to $\sim 10\%$ for $\theta = 1''$.

To study the impacts of blending on photometry, we first measure the MAG_AUTO magnitude of each detected object using SExtractor on I_0 images of the LSST-like r -band and the CSST r -band, respectively. They are at high resolution without noise. We then carried out the photometry measurements on the corresponding I_1 images, which are PSF-convolved and pixel scale-matched images but contain no noise. The comparison of these two sets of photometry can reveal cleanly the blending effects. For the *Euclid* VIS-band, the results are similar to those of CSST because of the similar PSF, and thus they are not shown here. The top left panel of Fig. 13 shows the scatter plot of the two sets of measurements, where the horizontal axis shows the I_0 magnitude and the vertical axis is the difference of the magnitudes measured

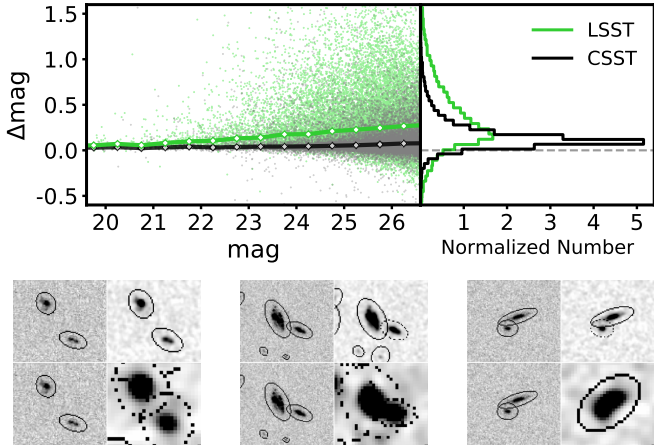


Fig. 13. Difference of the MAG_AUTO measurements from the I_0 and I_1 images, $\Delta\text{mag} = \text{mag}_{\text{auto}}^{I_0} - \text{mag}_{\text{auto}}^{I_1}$ vs. $\text{mag}_{\text{auto}}^{I_0}$. *Top left*: Δmag as a function of the I_0 magnitude for the LSST-like and CSST simulations. The lines show the median of Δmag . *Top right*: distribution of Δmag . *Bottom*: three examples of galaxy images illustrating the impact of blending with the top for CSST I_0 (left) and I_1 (right), and the bottom for the corresponding LSST-like case. The SExtractor Kron ellipses are overlaid for the detected objects.

in the I_0 and I_1 images. The lines are the median bias of the corresponding cases. It can clearly be seen that in the LSST-like case, the severe blending effects lead to magnitude estimates that are significantly biased downward, that is, brighter, with the median bias at $\text{mag} = 23, 24,$ and 25 being $0.135, 0.175,$ and 0.215 mag, respectively. For CSST, the corresponding bias is about $0.038, 0.042,$ and 0.052 mag. The distributions of the Δmag are shown in the top right.

From the distributions, we note that the Δmag is systematically positive, meaning that the MAG_AUTO magnitudes measured in I_1 images are systematically brighter than that of I_0 images. Our tests show that this is attributed to the larger Kron ellipses (in unit of arcsec) used in I_1 images than that of in I_0 images due to both the PSF effect and the pixel downsampling from I_0 to I_1 . Firstly, the PSF smoothing operation tends to smear the surface brightness distributions of the galaxies and reduce the random background noise. Secondly, the downsampling operation of the pixel scale from I_0 to I_1 images can also reduce the random background noise and thus increase the S/N of the galaxies in I_1 . Both result in a smaller MAG_AUTO measured from I_1 and, thus, the distributions shown in the top panel of Fig. 13 being peaked at a positive Δmag . On the other hand, it is the blending effects that lead to a significantly extended tail at the positive side of the distribution, especially in the case of LSST-like survey. The bottom panels of Fig. 13 present three examples of galaxy images. In each of these panels, the left sub-panels are the CSST (top) and LSST-like (bottom) I_0 images while the right sub-panels show the corresponding I_1 images. They demonstrate how the blending effect impacts the ground-based photometry at different levels. Here, again, the larger Kron ellipses due to PSF smoothing and image downsampling can be seen on the I_1 images. We note that SExtractor provides a deblending procedure. However, this is clearly not good enough. More sophisticated deblending techniques are needed. On the other hand, for the two space missions, the blending effect is much lower and the photometric measurements can be significantly simplified.

The photometry results shown in Fig. 13 correspond to SExtractor MAG_AUTO magnitudes, which are intended to mea-

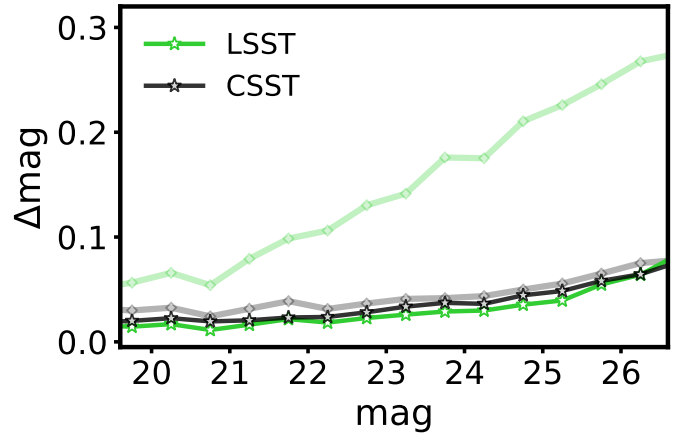


Fig. 14. Median of the magnitude difference measured from I_0 and I_1 images using *Euclid* VIS apertures and rescaled to the total magnitude following Eq. (1) (dark colored lines). For comparison, the results of Fig. 13 are shown in light colored lines.

sure the total magnitude of galaxies directly from images. In other words, if considering joint analyses of different surveys, such measurements can be used for data combinations at the catalog level. Because of the PSF smoothing and image downsampling, the aperture used to compute MAG_AUTO is significantly larger in the case of LSST-like simulations compared to the simulated space-based data, causing severe blending effects and biases in the photometry. Using space observations as priors, the photometry can be improved significantly (e.g., Chary et al. 2020; Melchior et al. 2018). This demands that the data combination must be done at the pixel level. In fact, in our photo- z analyses in Sect. 3.1, we adopt the *Euclid* VIS detection to provide a position prior and the photometric aperture for a galaxy is also from *Euclid* VIS. We then apply them to other cases considering the scaling relation of Eq. (1). We performed such measurements here to I_0 and I_1 images of different cases and the results are presented in Fig. 14. By comparing with the results shown in Fig. 13, we can see that the bias in the LSST-like case is indeed reduced significantly. For CSST, the results are nearly the same. This reveals to us that for the two space missions, the data combination at the catalog level may be sufficient. By including ground-based data, however, careful treatments at the pixel level are necessary.

For the total blends in the LSST-like case shown in Fig. 12, we calculate the flux ratio of the blended galaxies from high-resolution *Euclid* VIS I_1 images. The results are presented in Fig. 15, where the left panel shows the flux ratio versus the LSST-like r -band magnitude of the total blends. Different sub-panels are for the total blends using different matching radius θ , and the dashed lines are the corresponding medians. The distributions of the flux ratio for the cases shown in the left are presented in the right panel where they are all divided by the number of total blends in the case of $\theta = 2''$. Thus, the areas under the curves reflect the relative probabilities with respect to the case of $\theta = 2''$. The median flux ratio increases with the decrease of the matching radius, but the probability of total blends with smaller matching radius is lower. For $\theta = 2''$, the median flux ratio is $\sim 0.1, \sim 0.2$ and 0.3 at the LSST-like $\text{mag} = 23, 24$ and 25 , respectively.

To show the blending effects on photo- z s, in Fig. 16, we replotted the results of *Euclid*+LSST-like Year10 data and *Euclid*+CSST with different photometric apertures specified in Sect. 3.1. In addition, we also show the results for the

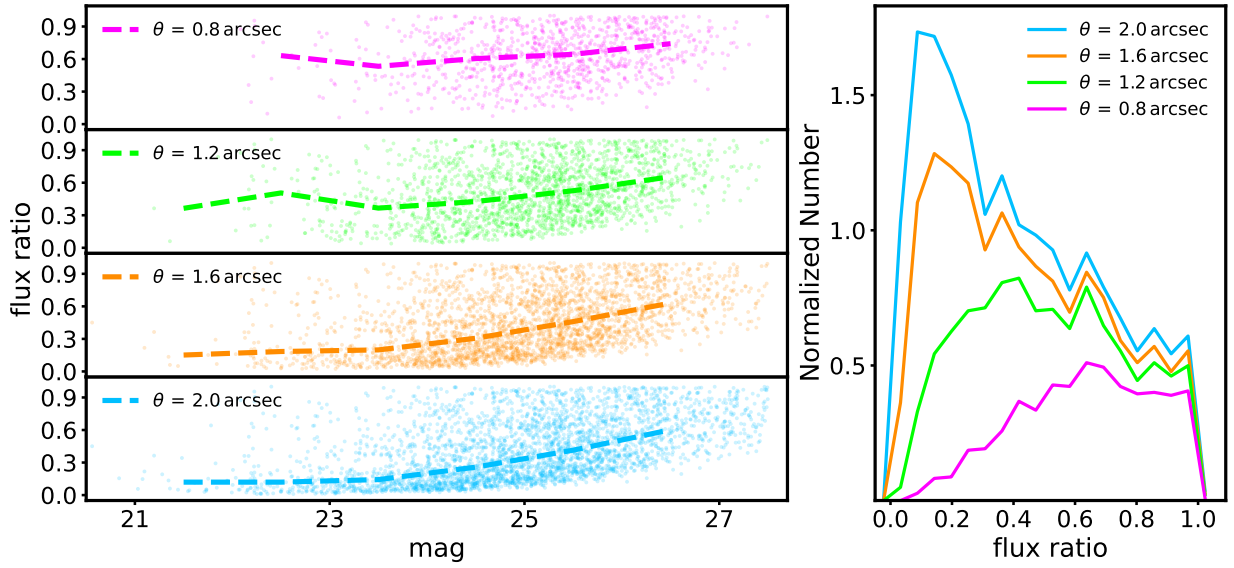


Fig. 15. Flux ratio of the contributing *Euclid* VIS I_1 galaxies in the LSST-like total blends. The sub-panels in the *left panel* show the scatters and the median values of the flux ratios with different matching radii with the horizontal axis showing the LSST-like r -band magnitude of the total blends. The *right panel* is the corresponding results of the probability distributions normalized using the number of total blends for a matching radius of $2''$.

Euclid+LSST-like case but discarding the galaxies with neighbours within $2''$. It is seen that by removing those potential blended galaxies, the outlier rate is reduced significantly for the aperture size larger than $2D \sim 2''$. This shows clearly the blending effect on the photo- z measurements for ground-based observations and careful deblending, which is not studied here, is needed for relatively large aperture sizes. For *Euclid*+CSST, because of the high-resolution images in optical bands, the effect of the aperture size resulting from the blending on photo- z accuracy is much weaker, showing the advantage of the space-space data combination of *Euclid* and CSST with similarly high resolutions in optical bands.

3.3. PSF chromaticity

The wide *Euclid* VIS band is designed to increase the signal-to-noise ratio of galaxies for accurate shear measurements. However, this leads to a significant chromaticity of the PSF. The effective PSF depends on the SED of each object. It can differ systematically for stars and galaxies. This can lead to significant biases in the shear measurement if not carefully accounted for (e.g., Cypriano et al. 2010; Eriksen & Hoekstra 2018; Meyers & Burchat 2015; Carlsten et al. 2018).

CSST has seven bands from NUV to y , and can provide valuable SED information for stars and galaxies. Such information can be used for *Euclid* to obtain accurate PSF measurements from stars. The PSF interpolation to galaxies can also be improved by including galaxy SEDs at high angular resolution and thus reducing the PSF chromaticity bias in shear measurements. In addition, CSST is equipped with slitless spectrometers for galaxy redshift surveys. They cover the wavelength range from 255 nm to 1000 nm, divided into the three bands GU, GV, and GI. The spectral resolution is ~ 200 . For the wide survey, the cumulative magnitude limit within each of the three bands is about $\text{mag} \sim 23$ (5σ for point source). For the deep survey, it is one magnitude deeper. The spectral data from CSST can then provide high-resolution stellar SEDs, which can further improve the *Euclid* PSF construction compared to the use of photometry-based SED estimates.

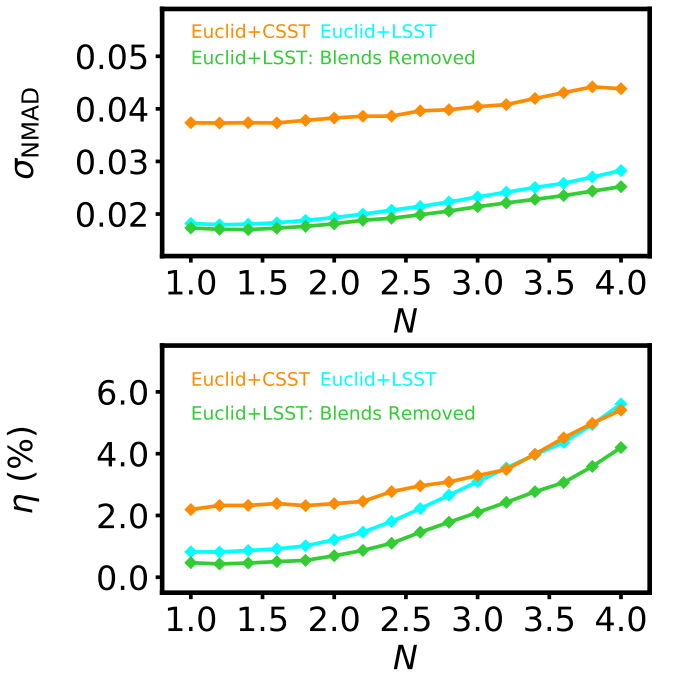


Fig. 16. Aperture dependence of σ_{NMAD} (top) and η (bottom) for *Euclid*+LSST-like Year10 data (blue), *Euclid*+LSST-like Year10 with galaxies having neighbours within $2''$ removed (green), and *Euclid*+CSST (orange).

For extended galaxies, besides the PSF chromaticity bias described above, there is also a color gradient (CG) bias in the shear measurement resulting from SED differences within a galaxy. The amplitude of the CG bias depends on several factors: the SED of the galaxy, the relative size of the galaxy compared to the PSF, and the width of the filter. The wide bandpass of the *Euclid* VIS filter can lead to a non-negligible CG bias. It has been demonstrated that the *Euclid* VIS CG bias can be calibrated using high spatial resolution data from two narrower bands

covering the VIS bandpass (Semboloni et al. 2013; Er et al. 2018). The analyses show that for each type of galaxies based on, for instance, galaxy size, bulge-to-total flux ratio, B/T, and SED, their average multiplicative CG bias can be calibrated down to the 0.1% level using 50 images with $S/N \geq 50$ in the two narrower bands (Er et al. 2018).

CSST has a similar spatial resolution and a smaller pixel scale of $0''.074$ than that of *Euclid* VIS. The g, i, r, z bands from CSST can thus provide narrower-band data for *Euclid* CG bias calibration. In order to see if CSST surveys can provide a sufficient number of high S/N galaxy images, we calculate the statistics of the S/N of CSST galaxies from our mock CSST simulations.

As noted in Sect. 4, the HDUV catalog has a relatively small size. Although we generate 20 sets of mock images by adding different realizations of noise, for each galaxy, its input parameters, including position, redshift, intrinsic size, σ , and B/T are the same in all the 20 sets. Thus, the statistics in terms of these parameters concerned in the CG bias calibration are limited by the input HDUV catalog. In comparison, the COSMOS2015 catalog covers a much larger sky area and thus contains many more galaxies (Laigle et al. 2016). We therefore use the parallel CSST mock simulations based on the COSMOS2015 catalog for the statistical analyses here.

Specifically, we consider a portion of the COSMOS field covering an area of $0.6 \times 0.6 \text{ deg}^2$ centered at (RA, Dec) = (150 $^{\circ}$ 0, 2 $^{\circ}$ 0). The selected field provides a large enough galaxy sample while being less affected by saturated star masks. Meanwhile, to avoid bad photometric measurements, we select galaxies by constraining the parameter FLAGS in i^+ -band to be smaller than 3, meaning that galaxies suffering from the impact of saturation or truncation are excluded, but those with close neighbours are kept. The redshift of a galaxy is taken to be the median value of its photo- z likelihood distribution (PHOTOZ==ZPDF) given in the COSMOS2015 catalog. To acquire the size and orientation parameters of these galaxies, we match them with the HST/ACS F814W-band catalog (Leauthaud et al. 2007), using a matching radius of $1''$. Finally, we have 99 264 galaxies as input for the image simulations. We follow the simulation steps described in Sect. 3.1.1 to generate mock multi-band images for the CSST wide survey and also for the CSST deep survey, which is about one magnitude deeper than the wide one. In accord with the studies in Er et al. (2018), we consider calibrations using two narrower bands. We therefore stack the images of g, r bands and i, z bands separately to build the calibration data sets.

In Fig. 17, we show the S/N distributions of galaxies from CSST wide (top) and deep (bottom) simulations. Here, we only consider galaxies with *Euclid* VIS mag < 24.5. For comparison, we scale the galaxy numbers here to a sky area of 400 deg^2 , the planned coverage of the CSST deep survey. The corresponding number of galaxies with $S/N \geq 50$ is 2.07×10^6 and 5.83×10^6 for the wide and deep cases, respectively. We further consider galaxies with different properties. It is known that the bulge and disk components of galaxies typically have different SEDs. Thus galaxies with different B/T can have different CG biases, and need to be calibrated separately. We therefore bin galaxies based on B/T and calculate the S/N for galaxies in each bin. Figure 18 shows the number distribution of galaxies with $S/N > 50$, with respect to B/T from CSST deep simulations. It is noted that the absence of galaxies in the range $0.3 \lesssim \text{B/T} < 1.0$ is attributed to the input B/T distribution, as described in Sect. 3.1.1. We can see that the 400 deg^2 CSST deep survey can provide sufficient numbers of galaxies in nearly all the B/T bins for *Euclid* to calibrate the CG bias.

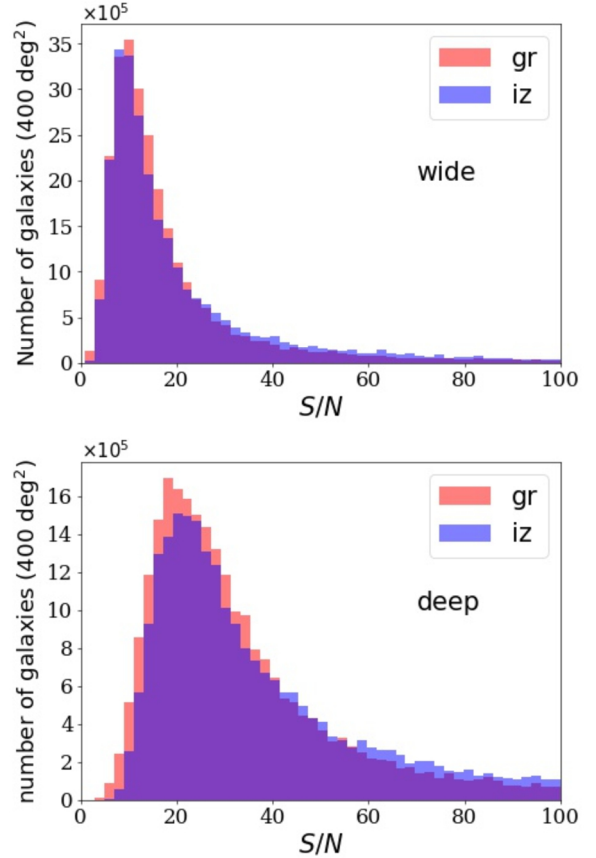


Fig. 17. Distribution of galaxy S/N from CSST simulations. *Top and bottom panels* are for wide and deep surveys, respectively. Only galaxies with *Euclid* VIS mag < 24.5 are included.

We further analyzed the feasibility of calibration in finer grids of galaxy parameters. In Fig. 19, the top panel shows the number distribution of galaxies with $S/N \geq 50$ expected from the full CSST deep survey in 2D grids of B/T vs. redshift z . Here, the bin sizes are 0.015 for B/T, and 0.03 (0.15) for z at $z < 1.5$ ($z \geq 1.5$). The bottom panel is for the number distribution in B/T vs. the intrinsic size of galaxies σ defined in Sect. 4 for galaxies in the redshift range of $0.5 \leq z \leq 0.6$. We can see that the deep survey shall be able to provide a calibration sample up to $z \sim 3$. At $z < 1$, it will be possible to perform analyses for different types of galaxies separately, leading to more accurate calibrations for the CG bias for galaxies with different B/T and size.

As discussed in this work, because of the ground-based source detection, the COSMOS2015 catalog has a lower number density of galaxies than that of the HDUV catalog with the source detection from the high-resolution HST images. Thus the statistics shown here are conservative. We expect that the CSST deep survey can provide a larger number of high-S/N galaxies than that seen in Figs. 17–19 for *Euclid* to calibrate the CG bias.

Besides CG bias calibration for different samples of galaxies, it may even be possible to correct for the bias for individual galaxies with CSST high S/N multi-band data. We leave this for future studies.

4. Further science

Apart from WL analyses, the complementarity of the data from *Euclid* and CSST can benefit many more areas of research. Here,

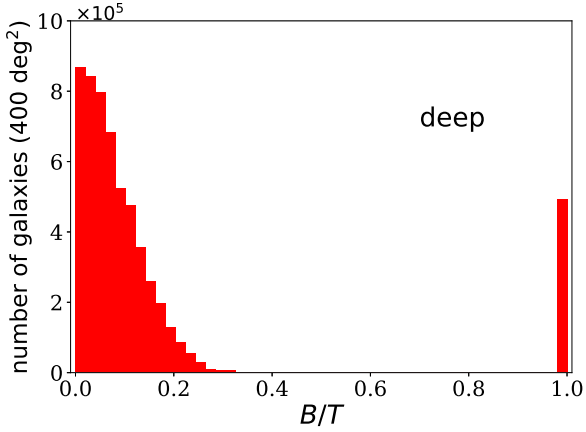


Fig. 18. Number distribution of galaxies with $S/N > 50$ as a function of B/T expected from CSST deep survey of 400 deg^2 .

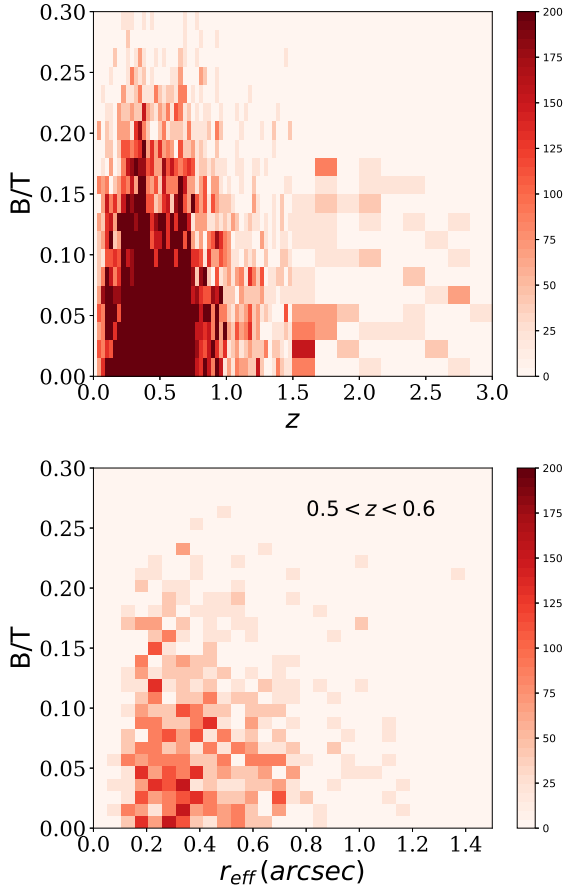


Fig. 19. Number distribution of galaxies with $S/N > 50$ in 2D grids of B/T vs. redshift z (*top panel*) and of B/T vs. the intrinsic size σ (*bottom panel*), expected from the full 400 deg^2 of CSST deep survey. The color bar represents the number of galaxies in unit of 50 and truncated at 200 for clear visibility. In the *top panel*, the bin size of B/T is 0.015, and that for z is 0.03 for redshifts within the range of $[0, 1.5]$ and 0.15 within $[1.5, 3]$. In the *bottom panel*, the galaxies are selected with redshifts within $[0.5, 0.6]$.

we briefly mention a few topics that are outside of WL but relate to cosmology. They especially make use of the multi-band imaging data and the resulting photometric measurements.

The high resolution and large sky coverage of the two surveys have allowed us to find $\sim 10^5$ strong-lensing sys-

tems. Their identification requires deep-learning-based machinery (e.g., [Metcalf et al. 2019](#)). The color information from the joint multi-band imaging data can improve the efficiency and accuracy of the strong-lensing system detection considerably (e.g., [Petrillo et al. 2019](#); [Pearson et al. 2019](#)). Furthermore, *Euclid*+CSST can provide accurate photo- z s for both lenses and sources, and thus additional information on the geometrical distances of lens systems. This can tighten the lens modeling performance significantly. One of the major science cases of strong lensing in both CSST and *Euclid* is to detect small perturbations to Einstein rings and giant arcs, which can put constraints on the nature of dark matter (e.g., [Li et al. 2016, 2017](#)). This requires very accurate modelling of the lens mass distribution. Data from independent surveys can provide unique discriminating tests of the model accuracy. In addition, because of the wavelength-dependence of the light distribution for a source galaxy, its lensed image positions in the optical and NIR can be different. Therefore, the joint lensing analyses from CSST optical and *Euclid* NIR observations provide more sample points to constrain the lens potential, helping to break degeneracies in the lens modeling.

The photo- z measurements from *Euclid*+CSST can also improve the detection of clusters of galaxies. In particular, the NIR bands from *Euclid* can lead to more efficient identifications of high-redshift clusters comparing to that with CSST 7 bands only ([Wen & Han 2021](#)). The improved photo- z accuracy is also important to allow us to probe tomographic galaxy clustering using photometric galaxy samples, which typically have a much larger number of galaxies extending to higher redshifts than that of spectroscopic galaxy samples.

Additionally, the data from NUV to H from *Euclid*+CSST will form a great data pool for legacy studies, such as galaxy formation and evolution, near-field cosmology, etc. As an example, the high-resolution multi-band data from the two space missions will allow robust SED modeling, with, for instance, CIGALE ([Boquien et al. 2019](#); [Yang et al. 2020](#)), to derive the physical properties, such as the stellar mass or star formation rate for a large sample of galaxies. Carefully decomposing light from AGNs and host galaxies can also provide information about the AGN luminosity function to the faint end. Combined with the spectroscopic data from the two surveys, it is expected that the synergy will give new insights into the formation and evolution of galaxies and AGNs as well as the large-scale structures of the Universe. Because both projects have different working groups investigating on different subjects, detailed explorations of the synergy in areas other than WL cosmology is beyond the scope of our studies here.

5. Discussion and conclusions

The high-quality multi-band data from upcoming large surveys will allow us to probe the Universe with an unprecedented precision. The question of how to efficiently utilize data from different surveys to enhance the science gains is becoming increasingly important.

In this study, we focus on the two space missions, *Euclid* and CSST, and investigate their potential synergies emphasizing the aspects related to the weak lensing studies. While having a similarly high spatial resolution and largely overlapping sky coverage, the two missions cover different wavebands. Their combination can produce multi-band data from NUV to H for over a billion galaxies. We analyzed the photo- z performance from *Euclid*+CSST. For galaxies with *Euclid* VIS mag < 24.5 and $0.2 < z_{\text{output}} < 2.6$, the dispersion is $\sigma_{\text{NMAD}} \approx 0.04$, and the

outlier fraction is $\eta \approx 2.4\%$. The precision is comparable to that from the combination of the *Euclid*+LSST-like data over two to three years. Because of the similar sky coverage, the utilization of the data from the two space missions can be done in a uniform way, and thus the systematic errors in the data processing can be well controlled. This is advantageous over the combination of *Euclid* with several different ground-based surveys with different performance characteristics. Compared with the photo- z results from CSST seven bands only, the inclusion of the *Euclid* NIR bands leads to a significant reduction of the outlier fraction from $\sim 8.5\%$ to $\sim 2.4\%$.

We also carried out simulations to investigate the image blending effects. For *Euclid* and CSST, because of their high resolutions, the blending effects are minimal, and thus a catalog-level data combination from the two space missions is feasible. When combined with ground-based data, however, pixel-level analyses with careful deblending are necessary. While there are still blended galaxies for the simulated space-based observations, their fraction is much lower compared to ground-based observations. Their deblending can be done efficiently by employing multi-band pixel data from CSST and *Euclid*. This will be investigated in future studies.

Analyses of *Euclid* VIS data are significantly affected by the PSF chromaticity. Accordingly, the addition of multi-band imaging and slitless spectroscopic observations from CSST can improve the *Euclid* VIS PSF modelling, and provide calibrations for chromaticity bias and the CG bias in shear measurements. Our studies show that the CSST 400 deg² deep multi-band photometric survey can provide a large sample of galaxies with high $S/N > 50$. Therefore, the multiplicative CG bias can be well calibrated to the level of 0.1% for *Euclid* galaxies with different B/T, and at different redshifts up to $z \sim 3$. On the other hand, the NIR data from *Euclid* can be valuable for CSST for a better star-galaxy separation and thus to improve the precision of the PSF construction.

The studies detailed here assume the full availability of the data. The two missions have however different schedules: *Euclid* is expected to be launched in early 2023 and CSST is set for late 2023 or early 2024 for launch. We also note that for CSST, different filters are distributed across the focal plane. Hence, the survey strategy will impact how quickly observations in all filters can be completed for a certain patch of the sky. With *Euclid* in orbit first, it might be worth thinking of a coordinated survey strategy for CSST, so that the synergies of the two missions can be realized in the early years of the surveys. The joint studies can benefit many more areas of astrophysical research beyond the WL analyses presented here. Given the great potential, possible survey coordination between the two missions, both for the wide and deep survey components, warrants further careful investigation.

Acknowledgements. This research was initiated under the support of the ISSI/ISSI-BJ International Team Programs. All the Chinese coauthors acknowledge the science research grants from the China Manned Space Project with Nos. CMS-CSST-2021-A01 and CMS-CSST-2021-B01. The Bonn group acknowledges support from the German Federal Ministry for Economic Affairs and Energy (BMWi) provided through DLR under projects 50QE1103 and 50QE2002, as well as funding provided by the European Union's Horizon 2020 research and innovation programme under grant agreement No. 776247. D.Z.L. acknowledges the support from NSFC under the grant of 12103043. Z.H.F. is supported in part by NSFC under 11933002, U1931210 and 11333001. R.L. acknowledges the NSFC grants of 11988101, 11773032 and 12022306, and the support from K.C. Wong Education Foundation, CAS Project for Young Scientists in Basic Research (No. YSBR-062). D.S. is a member of the International Max Planck Research School (IMPRS) for Astronomy and Astrophysics at the Universities of Bonn and Cologne. H.Y.S. acknowledges the supports

from NSFC under 11973070, the Shanghai Committee of Science and Technology under the grant No. 19ZR1466600 and Key Research Program of Frontier Sciences, CAS, Grant No. ZDBS-LY-7013. Y.S.T. acknowledges the financial support from the Australian Research Council through DECRA Fellowship DE220101520. L.P.F. acknowledges the supports from NSFC grants 11933002, and the Dawn Program 19SG41 & the Innovation Program 2019-01-07-00-02-E00032 of SMEC. H.Hi. is supported by a Heisenberg grant of the Deutsche Forschungsgemeinschaft (Hi 1495/5-1). H.Hi. and A.H.W. acknowledge support by the ERC (Consolidator Grant No. 770935). X.K.L. acknowledges the supports from NSFC of China under grant no. 11803028 and no. 12173033, and YNU grant no. C176220100008. The COSMOS2015 sample is based on data products from observations made with ESO Telescopes at the La Silla Paranal Observatory under ESO programme ID 179.A-2005 and on data products produced by TERAPIX and the Cambridge Astronomy Survey Unit on behalf of the UltraVISTA consortium. The employed CANDELS images are based on observations taken by the CANDELS Multi-Cycle Treasury Program with the NASA/ESA HST, which is operated by the Association of Universities for Research in Astronomy, Inc., under NASA contract NAS5-26555.

References

- Abbott, T. M. C., Adamów, M., Aguena, M., et al. 2021, *ApJS*, **255**, 10
- Abbott, T. M. C., Aguena, M., Alarcon, A., et al. 2022, *Phys. Rev. D*, **105**, 023520
- Aihara, H., Arimoto, N., Armstrong, R., et al. 2018, *PASJ*, **70**, S4
- Albrecht, A., Bernstein, G., Cahn, R., et al. 2006, arXiv e-prints [arXiv:astro-ph/0609591]
- Arcelin, B., Doux, C., Aubourg, E., Roucelle, C., & LSST Dark Energy Science Collaboration 2021, *MNRAS*, **500**, 531
- Astropy Collaboration (Robitaille, T. P., et al.) 2013, *A&A*, **558**, A33
- Bartelmann, M., & Schneider, P. 2001, *Phys. Rep.*, **340**, 291
- Bertin, E., & Arnouts, S. 1996, *A&AS*, **117**, 393
- Bouquien, M., Burgarella, D., Roehlly, Y., et al. 2019, *A&A*, **622**, A103
- Bosch, J., Armstrong, R., Bickerton, S., et al. 2018, *PASJ*, **70**, S5
- Brammer, G. B., van Dokkum, P. G., & Coppi, P. 2008, *ApJ*, **686**, 1503
- Cao, Y., Gong, Y., Meng, X.-M., et al. 2018, *MNRAS*, **480**, 2178
- Carlsten, S. G., Strauss, M. A., Lupton, R. H., Meyers, J. E., & Miyazaki, S. 2018, *MNRAS*, **479**, 1491
- Casertano, S., de Mello, D., Dickinson, M., et al. 2000, *AJ*, **120**, 2747
- Chary, R., Helou, G., Brammer, G., et al. 2020, arXiv e-prints [arXiv:2008.10663]
- Cypriano, E. S., Amara, A., Voigt, L. M., et al. 2010, *MNRAS*, **405**, 494
- Dark Energy Survey Collaboration (Abbott, T., et al.) 2016, *MNRAS*, **460**, 1270
- Eifler, T., Simet, M., Krause, E., et al. 2021, *MNRAS*, **507**, 1514
- Er, X., Hoekstra, H., Schrabback, T., et al. 2018, *MNRAS*, **476**, 5645
- Eriksen, M., & Hoekstra, H. 2018, *MNRAS*, **477**, 3433
- Euclid* Collaboration (Blanchard, A., et al.) 2020a, *A&A*, **642**, A191
- Euclid* Collaboration (Desprez, G., et al.) 2020b, *A&A*, **644**, A31
- Euclid* Collaboration (Scaramella, R., et al.) 2022, *A&A*, **662**, A112
- Fan, Z. 2018, *42nd COSPAR Scientific Assembly. Held 14–22 July 2018, in Pasadena, California, USA*, Abstract id. E1.16
- Farrens, S., Lagan, A., Guinot, A., & Vitorelli, A. Z. 2022, *A&A*, **657**, A98
- Fu, L., & Fan, Z. 2014, *RAA*, **14**, 1061
- Fu, L., Semboloni, E., Hoekstra, H., et al. 2008, *A&A*, **479**, 9
- Gawiser, E., van Dokkum, P. G., Herrera, D., et al. 2006, *ApJS*, **162**, 1
- Giavalisco, M., Ferguson, H., Koekemoer, A., et al. 2004, *ApJ*, **600**, L93
- Golob, A., Sawicki, M., Goulding, A. D., & Coupon, J. 2021, *MNRAS*, **503**, 4136
- Gong, Y., Liu, X., Cao, Y., et al. 2019, *ApJ*, **883**, 203
- Grogin, N., Kocevski, D., Faber, S., et al. 2011, *ApJS*, **197**, 35
- Guinot, A., Kilbinger, M., Farrens, S., et al. 2022, *A&A*, **666**, A162
- Guo, Y., Ferguson, H. C., Giavalisco, M., et al. 2013, *ApJS*, **207**, 24
- Guy, L. P., Cuillandre, J. C., Bachelet, E., et al. 2022, <https://doi.org/10.5281/zenodo.5836022>
- Heymans, C., van Waerbeke, L., Miller, L., et al. 2012, *MNRAS*, **427**, 146
- Heymans, C., Tröster, T., Asgari, M., et al. 2021, *A&A*, **646**, A140
- Hikage, C., Oguri, M., Hamana, T., et al. 2019, *PASJ*, **71**, 43
- Hildebrandt, H., Arnouts, S., Capak, P., et al. 2010, *A&A*, **523**, A31
- Hildebrandt, H., Erben, T., Kuijken, K., et al. 2012, *MNRAS*, **421**, 2355
- Hildebrandt, H., Viola, M., Heymans, C., et al. 2017, *MNRAS*, **465**, 1454
- Hildebrandt, H., Köhlinger, F., van den Busch, J. L., et al. 2020, *A&A*, **633**, A69
- Hildebrandt, H., van den Busch, J. L., Wright, A. H., et al. 2021, *A&A*, **647**, A124
- Huang, S., Leauthaud, A., Murata, R., et al. 2018, *PASJ*, **70**, S6
- Ivezić, Ž., Kahn, S. M., Tyson, J. A., et al. 2019, *ApJ*, **873**, 111
- Jain, B., Spergel, D., Bean, R., et al. 2015, arXiv e-prints [arXiv:1501.07897]
- Joseph, R., Courbin, F., & Starck, J. 2016, *A&A*, **589**, A2

- Kilbinger, M. 2015, *Rep. Prog. Phys.*, **78**, 086901
- Kilbinger, M., Fu, L., Heymans, C., et al. 2013, *MNRAS*, **430**, 2200
- Koekemoer, A., Faber, S., Ferguson, H., et al. 2011, *ApJS*, **197**, 36
- Kron, R. G. 1980, *ApJS*, **43**, 305
- Kuijken, K. 2008, *A&A*, **482**, 1053
- Kuijken, K., Heymans, C., Hildebrandt, H., et al. 2015, *MNRAS*, **454**, 3500
- Laigle, C., McCracken, H. J., Ilbert, O., et al. 2016, *ApJS*, **224**, 24
- Laureijs, R., Amiaux, J., Arduini, S., et al. 2011, arXiv e-prints [arXiv:1110.3193]
- Leauthaud, A., Massey, R., Kneib, J.-P., et al. 2007, *ApJS*, **172**, 219
- Lemos, P., Raveri, M., Campos, A., et al. 2021, *MNRAS*, **505**, 6179
- Li, R., Frenk, C. S., Cole, S., et al. 2016, *MNRAS*, **460**, 363
- Li, R., Frenk, C. S., Cole, S., Wang, Q., & Gao, L. 2017, *MNRAS*, **468**, 1426
- Liu, D., Yang, J., Yuan, S., et al. 2017, *AJ*, **153**, 53
- MacDonald, C. J., & Bernstein, G. 2010, *PASP*, **122**, 485
- Malek, K., Solarz, A., Pollo, A., et al. 2013, *A&A*, **557**, A16
- Mandelbaum, R. 2018, *ARA&A*, **56**, 393
- McCracken, H. J., Milvang-Jensen, B., Dunlop, J., et al. 2012, *A&A*, **544**, A156
- Melchior, P., Moolekamp, F., Jerdee, M., et al. 2018, *Astron. Comput.*, **24**, 129
- Metcalfe, R. B., Meneghetti, M., Avestruz, C., et al. 2019, *A&A*, **625**, A119
- Meyers, J. E., & Burchat, P. R. 2015, *ApJ*, **807**, 182
- Miller, L., Heymans, C., Kitching, T., et al. 2013, *MNRAS*, **429**, 2858
- Myles, J., Alarcon, A., Amon, A., et al. 2021, *MNRAS*, **505**, 4249
- Newberry, M. V. 1991, *PASP*, **103**, 122
- Newman, J. A., & Gruen, D. 2022, *ARA&A*, **60**, 363
- Newman, J. A., Abate, A., Abdalla, F., et al. 2015, *Astropart. Phys.*, **63**, 81
- Oesch, P. A., Montes, M., Reddy, N., et al. 2018, *ApJS*, **237**, 12
- Pearson, J., Li, N., & Dye, S. 2019, *MNRAS*, **488**, 991
- Petrillo, C. E., Tortora, C., Chatterjee, S., et al. 2019, *MNRAS*, **482**, 807
- Planck Collaboration VI. 2020, *A&A*, **641**, A6
- Rafelski, M., Teplitz, H., Gardner, J., et al. 2015, *AJ*, **150**, 31
- Reiman, D., & Göhre, B. 2019, *MNRAS*, **485**, 2617
- Rhodes, J., Nichol, R., Aubourg, E., et al. 2017, *ApJS*, **233**, 23
- Rowe, B. T. P., Jarvis, M., Mandelbaum, R., et al. 2015, *Astron. Comput.*, **10**, 121
- Salvato, M., Ilbert, O., & Hoyle, B. 2019, *Nat. Astron.*, **3**, 212
- Schade, D., Lilly, S. J., Le Fevre, O., Hammer, F., & Crampton, D. 1996, *ApJ*, **464**, 79
- Semboloni, E., Hoekstra, H., Huang, Z., et al. 2013, *MNRAS*, **432**, 2385
- Sevilla-Noarbe, I., Bechtol, K., Carrasco Kind, M., et al. 2021, *ApJS*, **254**, 24
- Simard, L., Willmer, C. N. A., Vogt, N. P., et al. 2002, *ApJS*, **142**, 1
- Skelton, R. E., Whitaker, K. E., Momcheva, I. G., et al. 2014, *ApJS*, **214**, 24
- Spergel, D., Gehrels, N., Baltay, C., et al. 2015, arXiv e-prints [arXiv:1503.03757]
- Stabenau, H. F., Connolly, A., & Jain, B. 2008, *MNRAS*, **387**, 1215
- Tanaka, M., Coupon, J., Hsieh, B.-C., et al. 2018, *PASJ*, **70**, S9
- Taniguchi, Y., Kajisawa, M., Kobayashi, M., et al. 2015, *PASJ*, **67**, 104
- Tröster, T., Asgari, M., Blake, C., et al. 2021, *A&A*, **649**, A88
- Voigt, L. M., Bridle, S. L., Amara, A., et al. 2012, *MNRAS*, **421**, 1385
- Weinberg, D., Mortonson, M., Eisenstein, D., et al. 2013, *Phys. Rep.*, **530**, 87
- Wen, Z., & Han, J. 2021, *MNRAS*, **500**, 1003
- Wright, A. H., Robotham, A. S. G., Bourne, N., et al. 2016, *MNRAS*, **460**, 765
- Wright, A. H., Hildebrandt, H., Kuijken, K., et al. 2019, *A&A*, **632**, A34
- Yang, G., Boquien, M., Buat, V., et al. 2020, *MNRAS*, **491**, 740
- Zhan, H. 2011, *Sci. Sin. Phys. Mech. Astron.*, **41**, 1441
- Zhan, H. 2018, 42nd COSPAR Scientific Assembly. Held 14–22 July 2018, in Pasadena, California, USA, Abstract id. E1.16
- Zhan, H. 2021, *Chin. Sci. Bull.*, **66**, 1290
- Zhou, X., Gong, Y., Meng, X., et al. 2021, *ApJ*, **909**, 53
-
- ¹ South-Western Institute for Astronomy Research, Yunnan University, Kunming 650500, PR China
e-mail: zuhui.fan@ynu.edu.cn
- ² Key Laboratory of Space Astronomy and Technology, National Astronomical Observatories, Chinese Academy of Sciences, Beijing 100101, PR China
- ³ AIM, CEA, CNRS, Université Paris-Saclay, Université de Paris, 91191 Gif-sur-Yvette, France
e-mail: martin.kilbinger@cea.fr
- ⁴ Purple Mountain Observatory, Chinese Academy of Sciences, Nanjing 210023, PR China
- ⁵ Zhejiang University-Purple Mountain Observatory Joint Research Center for Astronomy, Zhejiang University, Hangzhou 310027, PR China
- ⁶ National Astronomical Observatories, Chinese Academy of Sciences, Beijing 100101, PR China
- ⁷ School of Astronomy and Space Science, University of Chinese Academy of Sciences, Beijing 100049, PR China
- ⁸ Institute for Frontiers in Astronomy and Astrophysics, Beijing Normal University, Beijing 102206, PR China
- ⁹ Argelander-Institut für Astronomie, Universität Bonn, Auf dem Hügel 71, 53121 Bonn, Germany
- ¹⁰ Institut für Astro- und Teilchenphysik, Universität Innsbruck, Technikerstr. 25/8, 6020 Innsbruck, Austria
- ¹¹ Shanghai Astronomical Observatory (SHAO), Nandan Road 80, Shanghai 200030, PR China
- ¹² University of Chinese Academy of Sciences, Beijing 100049, PR China
- ¹³ CPPM, Aix-Marseille Université, CNRS/IN2P3, CPPM UMR 7346, 13288 Marseille, France
- ¹⁴ Research School of Astronomy & Astrophysics, Australian National University, Cotter Rd., Weston, ACT 2611, Australia
- ¹⁵ Research School of Computer Science, Australian National University, Acton, ACT 2601, Australia
- ¹⁶ Department of Astronomy, Shanghai Jiao Tong University, Shanghai 200240, PR China
- ¹⁷ Department of Physics and Astronomy, The Johns Hopkins University, 3400 N Charles Street, Baltimore, MD 21218, USA
- ¹⁸ Shanghai Key Lab for Astrophysics, Shanghai Normal University, Shanghai 200234, PR China
- ¹⁹ Ruhr University Bochum, Faculty of Physics and Astronomy, Astronomical Institute (AIRUB), German Centre for Cosmological Lensing, 44780 Bochum, Germany
- ²⁰ Institute of Physics, Laboratory of Astrophysics, École Polytechnique Fédérale de Lausanne (EPFL), Observatoire de Sauverny, 1290 Versoix, Switzerland
- ²¹ Aix-Marseille Univ., CNRS, CNES, LAM, 13388 Marseille, France
- ²² CEA Saclay, DFR/IRFU, Service d'Astrophysique, Bat. 709, 91191 Gif-sur-Yvette, France
- ²³ Institut d'Astrophysique de Paris, 98 Bis Boulevard Arago, 75014 Paris, France
- ²⁴ Kavli Institute for Astronomy and Astrophysics, Peking University, Beijing 100871, PR China