



HAL
open science

Impact of in Situ Simulated Climate Change on Communities and Non-Indigenous Species: Two Climates, Two Responses

Robin Gauff, Christophe Lejeusne, Stephane Greff, Stephane Loisel, Olivier Bohner, Dominique Davoult

► **To cite this version:**

Robin Gauff, Christophe Lejeusne, Stephane Greff, Stephane Loisel, Olivier Bohner, et al.. Impact of in Situ Simulated Climate Change on Communities and Non-Indigenous Species: Two Climates, Two Responses. *Journal of Chemical Ecology*, 2022, 48 (9-10), pp.761-771. 10.1007/s10886-022-01380-4 . hal-03861242

HAL Id: hal-03861242

<https://hal.science/hal-03861242v1>

Submitted on 3 Apr 2023

HAL is a multi-disciplinary open access archive for the deposit and dissemination of scientific research documents, whether they are published or not. The documents may come from teaching and research institutions in France or abroad, or from public or private research centers.

L'archive ouverte pluridisciplinaire **HAL**, est destinée au dépôt et à la diffusion de documents scientifiques de niveau recherche, publiés ou non, émanant des établissements d'enseignement et de recherche français ou étrangers, des laboratoires publics ou privés.

1 **Getting used to the heat – Success of non-indigenous species facing**
2 **climate change might depend on prior climate context.**

Robin P. M. Gauff^{1*}, Christophe Lejeusne², Stéphane Greff², Stéphane Loisel¹, Olivier Bohner¹, Dominique Davoult¹

1 Sorbonne Université, CNRS, UMR 7144, Adaptation et Diversité en Milieu Marin, Station Biologique Roscoff, Place Georges Teissier, 29680 Roscoff, France

2 Aix Marseille Univ, CNRS, IRD, Avignon Université, IMBE, UMR 7263, Station Marine d'Endoume, Rue de la Batterie des Lions, 13007 Marseille, France

* Corresponding author: gauff.robin@yahoo.de; +33658431366

3 **Abstract** - Climate change constitutes a major challenge for marine urban ecosystems and ocean
4 warming will likely strongly affect local communities. Non-Indigenous Species (NIS) have been shown
5 to often have higher heat resistance than natives, but studies investigating how forthcoming global
6 warming might affect them in marine urban environments remain scarce, especially *in situ* studies.
7 Here we used an *in situ* warming experiment in a NW Mediterranean (warm temperate) and a NE
8 Atlantic (cold temperate) marina to see how global warming might affect recruited communities in the
9 near future. In both marinas, warming resulted in significantly different community structure, lower
10 biomass, and more empty space compared to control. However, while in the warm temperate marina,
11 NIS showed an increased surface cover, it was reduced in the cold temperate one. Metabolomic
12 analyses in the Atlantic marina revealed potential heat stress experienced by the introduced bryozoan
13 *Bugula neritina* and identified a potential link between heat stress and the expression of a halogenated
14 alkaloid, Caelestine A. The present results might indicate that global warming might not cause identical
15 effects everywhere on the prevalence of NIS, and that present local climate may play a role in their
16 response.

17 **Key Words** - Introduced species; Climate Change; *in situ* warming; marina; Hot Plates; Metabolomics

18 **Acknowledgements** - We would like to warmly thank the harbor offices of Brest and Carry-le-Rouet
19 (especially the harbor master Henri Salati), and the Aix-Marseille-Provence Métropole for letting us
20 conduct experiments in the marinas. Special thanks also to Centre de Ressources Biologiques Marines
21 (CRBM) and the Roscoff Aquarium Services (RAS), specifically Gaëtan Schires and Sébastien Henry for
22 providing access to aquaria facilities and caring for the aquaria during species identification.
23 Metabolomics analyses were conducted at Chemical Ecology and Metabolomics facilities at
24 METABOMER Roscoff (Cedric Leroux) and IMBE (funded by ANR, French National Research Agency,
25 INEE the Institute of Ecology and Environment of the CNRS, the Total Foundation and the French Sud
26 PACA regional council). We also want to acknowledge Jean-Charles Martin (C2VN BIOMET platform,
27 Marseille) for creating in house metabolome filtering scripts for R. Thank you Elsa Davies for English
28 proofreading. Funding for this project has been provided through a PhD grant from the Sorbonne
29 Université - Museum National d'Histoire Naturelle (Ecole Doctorale 227). This work was also supported
30 by the French National Program EC2CO (Ecosphère Continentale et Côtière) and the program 'InPor'
31 of the INEE-CNRS' PEPS EcoMob (PIs: C. Lejeusne and D. Davoult).

32

33 **Introduction**

34 Climate change constitutes a major challenge for humanity and the situation has incited to strong
35 political engagements to counter it (UN 2015; IPCC 2021). It is however unlikely that efforts suffice to
36 limit global warming to +1.5°C, aimed for by the Paris agreement, and a scenario with a global
37 temperature increase of +3.2°C seems most likely (Raftery et al. 2017). Associated to this, sea surface
38 temperature is also projected to increase with climate change, with mean estimates ranging from
39 +0.7°C to +3°C above preindustrial levels depending on the considered scenario (IPCC 2019). Climate
40 change already poses a significant threat on natural ecosystems (Hanson and Weltzin 2000; Ayres and
41 Lombardero 2000; Hughes et al. 2003; Lejeusne et al. 2010; Waldock et al. 2018; Lonhart et al. 2019),
42 but as urban areas constitute islands of increased heat due to human activities and building materials,
43 climate change effects may be even exacerbated (Chapman et al. 2017). These combined effects of
44 climate and urbanization can be observed in terrestrial, aquatic and marine urban environments and
45 are affecting species characteristics (Luo et al. 2006; Chapman et al. 2017; Brans et al. 2017; Todd et
46 al. 2019). Understanding how climate change influences urban ecosystems, which are already
47 subjected to cumulative anthropic impacts, constitutes a grand challenge of high priority (Borja et al.
48 2020).

49 Climate change may substantially modify biological invasion patterns through niche modifications
50 inducing new areas to become available for invasive species (Zhang et al. 2020; Vilizzi et al. 2021). NIS
51 sometimes completely restructure the ecosystem leading to the loss of biodiversity and ecosystem
52 services (Pejchar and Mooney 2009; Johnston et al. 2015; Walsh et al. 2016). Besides the long term
53 warming, climate change is projected to further increase the frequency of extreme weather events
54 such as heat waves which can cause mass mortalities and restructure communities in natural
55 (Garrabou et al. 2009; Lejeusne et al. 2010; Collier and Waycott 2014) and in urban ecosystems (Smale
56 et al. 2015; Castro et al. 2021). This effect may directly benefit NIS as many have been shown to have
57 a higher temperature tolerance (Zerebecki and Sorte 2011; Lejeusne et al. 2014; Kenworthy et al.
58 2018a; Gewing et al. 2019). Increased warming can also exacerbate the effect of pollution on local
59 fauna by accelerating metabolism (Sokolova and Lannig 2008; Cabral et al. 2019; Todd et al. 2019). This
60 may even further advantage NIS as they appear more tolerant to pollution as well (Piola and Johnston
61 2008; Osborne and Poynton 2019). In the context of invasion, climate change might thus be a particular
62 management challenge as it may increase the impact of NIS. For now, many NIS are established in their
63 introduced range but are not considered invasive as they do not proliferate and do not cause adverse
64 effects on the environment (Occhipinti-Ambrogi and Galil 2004; Blackburn et al. 2011; Ojaveer et al.
65 2015). Yet some of these NIS may be sleeper species, which are currently impeded in their proliferation
66 by environmental conditions and may become invasive if these conditions change due to climate

67 change (Bradley et al. 2018; Spear et al. 2021). Furthermore, climate exerts strong selective pressures
68 on native and introduced populations and some species, including NIS, might rapidly adapt to climate
69 change through genetically mediated differences in thermal tolerances (Brans et al. 2017; Sork 2018)
70 or through plastic responses (Zerebecki and Sorte 2011; Sork 2018). Divergences in thermal tolerances
71 of species from different geographical locations may be good indicators of their capacity to adapt to
72 climate change (Sorte et al. 2011). It is thus crucial to foster the understanding of how climate change
73 might impact marine urban communities, especially considering the important place the NIS occupy.

74 The effect of global warming and/or heatwaves on a variety of coastal ecosystems has most of the
75 time been conducted through in aquaria and mesocosm studies (Sorte et al. 2010a; b; Smale et al.
76 2015; Wahl et al. 2015; Pansch et al. 2018; Castro et al. 2021) but completely *in situ* experiments
77 remain scarce (examples are Smale et al. 2011, 2017; Ashton et al. 2017), due to technical and
78 experimental difficulties of *in situ* water warming. Marinas are the major model for studying marine
79 urban communities, since they combine the different disturbances exerted by urbanization and have
80 a high abundance of NIS, but they also offer logistic advantages making it possible to conduct *in situ*
81 water warming experiments in an anthropogenic context.

82 In the present study we thus aim to assess the *in situ* effect of +3°C sea surface warming (RCP8.5; IPCC
83 2019) in two marinas, one in the NW Mediterranean and one in the NE Atlantic. We deployed indirectly
84 heated hot plates in open systems in two marinas and assessed differences in sessile community
85 characteristics from not heated control panels. We also focused on the metabolism of a common
86 marina species (reported as NIS in both surveyed marinas) to see if it was affected under increased
87 heat. The observed results could help to make predictions about the effect of climate change on these
88 two marinas, especially in regard to the prevalence of NIS, which are supposed to be advantaged by
89 increased heat.

90 **Materials and Methods**

91 ***Study sites***

92 The two sites selected for our study were the Marina du Chateau in Brest (henceforth “Chateau”;
93 Finistere, France; 48°22'45.4"N, 4°29'21.2"W) and the Port de Carry-le-Rouet (henceforth “Carry”;
94 Bouches-du-Rhône, France; 43°19'47.0"N, 5°09'09.5"E). Both marinas have similar boating capacities
95 (650 and 590 berths respectively), are semi-enclosed, and subject to anthropic impacts due to their
96 position in their urban area and water runoffs at the inner parts of the marinas. We deployed
97 experimental setups at the entrance of both marinas to avoid a synergetic and confounding effect of
98 strong pollution in the inner parts of marinas (Je et al. 2004; Kenworthy et al. 2018b).

99 **Experimental setup**

100 For each marina we deployed a structure with 10 settlement panels (Correx Polyethylene, 20 cm x 20
101 cm; Fig. 1). These recruitment panels were randomly assigned to be either control panels (5 per
102 marina) or being constantly heated at +3°C above the recorded ambient water temperature (5 per
103 marina). The experiment lasted 50 days in both marinas and started in mid-August 2020 in Carry and
104 early September for Chateau. To reach a stable water temperature difference with ambient water, the
105 settlement panels were placed at the top of transparent bottom opened acryl cylinders. Water column
106 warming of the cylinders was achieved through 200W aquaria resistors (approx. 20 cm away from the
107 panels) regulated with a built-in computer (Raspberry Pi3+) coupled to thermometers (DS18B20)
108 measuring the outside water temperature (Fig. 1, Sup. Fig. 1). The water temperature around the
109 heating elements and directly around the panels was regularly monitored to avoid overheating.
110 Passthroughs at the top of the cylinders aimed to increase connectivity with the surrounding water
111 and to avoid excessive stratification of the water within the cylinder.



112
113 *Fig. 1: in situ warming structure deployed in the marinas. Photo credit: Wilfried Thomas (CNRS Station Biologique*
114 *de Roscoff)*

115 **Fauna identification and community analysis**

116 At the end of the experiment all panels were transported to the laboratory where they were
117 maintained in open circuit aquaria until identification by a single observer in less than 36 h. A surface
118 of 15 cm x 15 cm was analyzed by superimposing a 100-point grid allowing for a resolution of more
119 than 0.4 points per cm² necessary for a reliable estimation of the surface cover (Taormina et al. 2020).
120 At each intersection of the grid all living individuals of any species were counted. Species present on a
121 panel that did not fall within an intersection were counted with 1% cover. Identification went to the
122 lowest possible taxonomical level (Zibrowius 1968; Hayward and Ryland 1979, 1985, 1995, 1998;
123 Bianchi 1981; Riedl 1983; Zabala and Maluquer 1988; Brunetti and Mastrototaro 2017). After analysis,

124 the panels were scraped, and biomass was dried at 60°C for one week, then weighted. To determine
125 ash free dry mass (AFDM) the dry communities were burned at 520°C for 6 h.

126 The community matrix has been analyzed using the 'vegan' R package (version 2.4-6; Oksanen et al.
127 2018). The Shannon (H') and Simpson (λ) diversity indices as well as Pielou (J') evenness and species
128 richness were assessed for each panel. They were compared between the control and heated
129 treatment with an ANOVA. A Poisson GLM was applied for species richness since it constitutes count
130 data. The community matrix was transformed into a Bray-Curtis dissimilarity matrix and multivariate
131 homogeneity of groups was verified with the 'betadisper' function. A Principal Coordinate Analysis
132 (PCoA) was used to visualize the community of both treatments for the two marinas. A subsequent
133 PERMANOVA (10^5 perm.) was used to assess for significant differences between treatments of each
134 marina. To identify the species contributing to the differences between treatments a SIMPER analysis
135 followed by an Multipattern analysis using the 'indicSpecies' package was conducted (10^4 perm.; ver.
136 1.7.1; Cáceres et al. 2011; De Cáceres 2013). An ANOVA was used on the AFDM to determine if
137 significant differences were present between treatments for each marina. The cover occupied by
138 empty space without any species and the cover exerted by NIS, was analyzed via a Poisson glm since
139 they originated from count data (One count = 1% cover).

140 **Metabolome identification and analysis**

141 The invasive bryozoan *Bugula neritina* was used for metabolomic analyses, as it usually occurs in both
142 marinas due to its worldwide introduction and having been previously studied in the Chateau marina
143 including for metabolomics (Gauff et al. in prep a). Unfortunately, biomass in the experiment from the
144 Carry marina was too low for metabolomic sampling, so analyses were only conducted in the Chateau
145 marina. For each panel, one large colony of *B. neritina* was sampled. Samples were immediately frozen
146 in dry ice, then stored at -80°C, freeze dried and ground to dust. The total metabolome was extracted
147 out of 5 mg of dry powder with 3 times 1 mL MeOH/DCM (CH₂Cl₂; 1:1) and ultrasonication at room
148 temperature during 2 min. Supernatants were filtered on PTFE syringe filters (13 mm, 0.22 µm,
149 Restek®). Two samples (one of each treatment) were excluded due to strong contamination. Before
150 injection into Liquid Chromatography Mass Spectrometry (LC-MS) the samples were resuspended in
151 500 µL MeOH and a pool sample was created by mixing 30 µL of each. Two blank samples, which were
152 submitted to the entirety of the extraction process were additionally produced. LC-MS were performed
153 with UHPLC (Dionex Ultimate 3000 with RS Pump, autosampler, thermostat column and UV diode
154 array, Thermo Scientific®) coupled to a quadrupole Time of Flight spectrometer (qToF) with an ESI
155 source (Impact II, Bruker Daltonics®). We conducted UHPLC separation on an Acclaim™ RSLC 120C18
156 column (150 mm x 2.1 mm, 2.2 µm, ThermoScientific®) at 40°C at 0.5 mL min⁻¹ elution rate. Water

157 (Polar, LC/MS grade, Carlo Erba®) with 0.1% formic acid (A) and acetonitrile (Apolar, LC/MS grade) with
158 0.1% formic acid (B) were used as chromatographic solvents. Chromatography cycles were set as
159 follows: 1) mix of 5:95 of A:B during 2 min, 2) linear increase up to 100% B during 8 min followed by
160 100% B during 4 min, 3) return to initial conditions (5:95, A:B) for 3 min (17 min total). We injected 10
161 μL in MS1+ and MS2+ with N_2 at 3.5 bars as nebulizer gas, N_2 at 12 L min^{-1} as dry gas, capillary temp.
162 at 200°C and voltage at 3500 V for a scan from 50 to 1200 mass units at 2 Hz. A spectrometer
163 calibration with a formate:acetate solution was performed before each sample and the pool sample
164 was injected every 4 samples to correct for source drift. Blank samples and pure solvent were injected
165 to filter for ions linked to the extraction process.

166 LC-MS profiles were automatically recalibrated with the internal calibration in 'Bruker Compass
167 DataAnalysis' (version 4.3) resulting in a m/z precision of 2 ppm. The netCDF data was processed with
168 the 'XCMS' R package (version 3.12; Smith et al. 2006) with peak picking for the detection of features,
169 obiwarp retention time correction, feature grouping (time frame 5 s) and peak filling. Ions were
170 manually normalized in Microsoft Excel (Van Der Kloet et al. 2009) and were filtered to exclude ions
171 originating from the blanks, based on signal/noise ratio ($S/N = 10$), ions with high variability in the pool
172 sample (> 0.2) and ions that were auto-correlated (> 0.8). To increase relevancy, we excluded the first
173 100 seconds of chromatography of our analysis.

174 Metabolome analyses were mainly performed in 'Metaboanalyst' (Xia et al. 2009). Our matrix had less
175 than 5000 features and was log transformed and auto scaled. A Principal Correspondence Analysis
176 (PCA) was used to visualize our sample structure. A PPLS-DA driven permutation Model Validation
177 Analysis (MVA) (10^5 perm., 6 components) using the 'RVAideMemoire' package in R (version 0.9-79;
178 Hervé 2021) tested for statistical differences between the treatments. A Volcano plot from
179 'Metaboanalyst' identified features with a significant foldchange (t-Test, $p < 0.05$; $\text{FC} > 1.5$). These
180 molecules were analyzed with fragmentation mass spectrometry (MS2) spectra. Molecular networking
181 via Global Natural Products Social Molecular Networking (GNPS; Wang et al. 2016) and visualized in
182 'cytoscape' (version 3.7.2) helped ion identification.

183 Molecules of particular interest, requiring further confirmation upon identification were compared
184 against a commercially produced standards (Ambinter®, Greenpharma) by injecting the sample with
185 the highest intensity and the commercial extract in a short injection series following the same
186 parameters as described earlier.

187

188

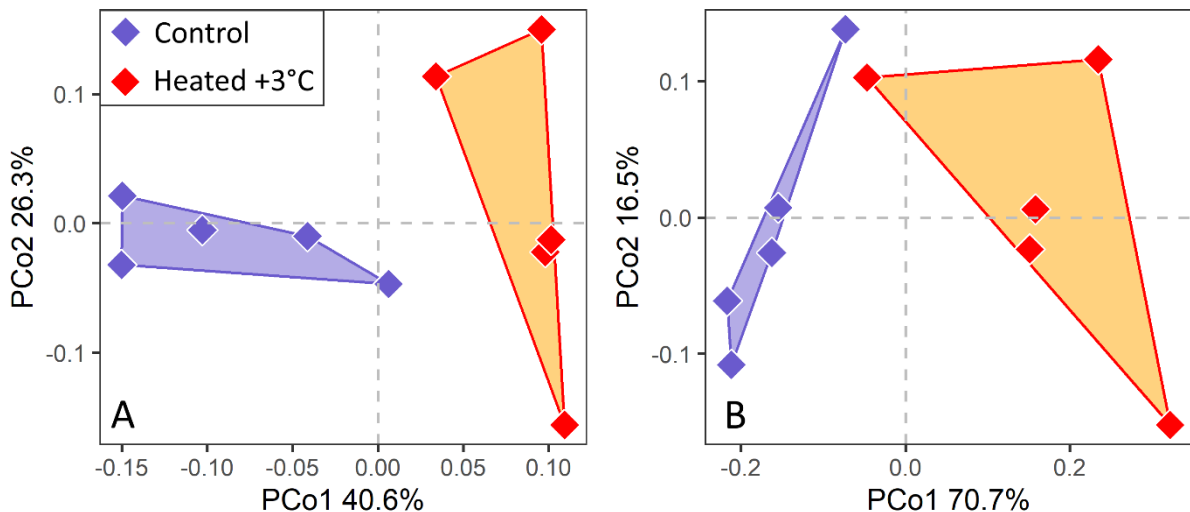
189 **Results**

190 **Community structure**

191 None of the diversity indices had significant differences between control and heated panels in any
192 marina (Carry: $H' J' \lambda$, ANOVA, $|R^2| < 0.27$, $p > 0.07$; S, Poisson glm, $z = -0.52$, $p = 0.62$; Chateau: $H' J' \lambda$,
193 ANOVA, $|R^2| < 0.12$; $p > 0.33$; S, Poisson glm, $z = 0.25$, $p = 0.81$). The species list for each marina can
194 be found in Sup. Tab. 1. On the PCoA of the community structure (Fig. 2), panels were distributed
195 according to their treatment (Control vs Heated) on the PCo1 axis, explaining 40.6% of the variability
196 between samples for Carry (Fig. 2 A) and 70.7% for Chateau (Fig. 2 B). The PCo2 axis ($< 26.3\%$)
197 corresponded to intra treatment variability. For both marinas, significant effects of the warming were
198 observable on the communities (PERMANOVA; Carry: $R^2 = 0.34$, $p = 0.008$; Chateau: $R^2 = 0.54$, $p =$
199 0.008). The SIMPER analysis revealed that in both cases, 5 species contributed to more than 70% of
200 the contrast between the treatments (over 85% for Chateau; Fig. 3; Tab. 1). At the Carry marina, only
201 the bryozoan *Aetea sica* has been identified as indicator species for the control (Tab. 1). In the Château
202 marina however, most of the contributors identified by SIMPER analysis were also indicator species of
203 the control treatment (Tab. 1). For this marina two additional species were identified as indicator
204 species for the heated treatment: the bryozoan *Cryptosula pallasiana* and the annelid *Spirobranchus*
205 *triqueter* (Tab. 1).

206

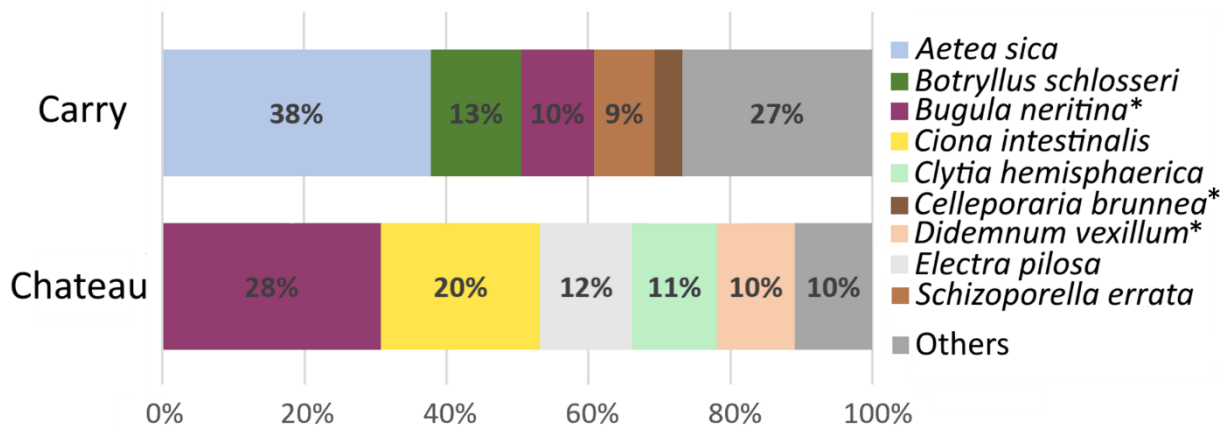
207



208

209 *Fig. 2: Principal Coordinate Analysis (PCoA) of the control and heated (+3°C) communities in the A) Carry-le-Rouet*
210 *Marina (Mediterranean) and in B) Marina du Château (Atlantic). Significant differences in community structure:*
211 *PERMANOVA: Carry ($R^2 = 0.34$, $p = 0.008$); Chateau ($R^2 = 0.54$, $p = 0.008$)*

212



213

214 Fig. 3: Cumulated contribution of different species to the contrast between the control and heated (+3°C)
 215 communities in the Carry-le-Rouet and Chateau marinas (SIMPER analysis). Species with an asterisk are non-
 216 indigenous species.

217 Tab. 1: Species most contributing to the contrast between the control and heated (+3°C) communities and
 218 indicator species for the treatments. Species in bold with an asterisk are non-indigenous species. SIMPER analysis
 219 score indicates the percentage a species contributes to the contrast between treatments (see also Fig. 3). The
 220 direction of the warming effect on the percent cover occupied by these species is indicated. Indicator species for
 221 each treatment identified through Multipattern analysis are indicated with their association statistic (Stat.) and
 222 the p-value. SIMPER scores in parentheses are scores that are not part of the most important contributors.

Carry-le-Rouet						
Species	SIMPER Score	Effect of warming	Indicator species control		Indicator species heated	
			Stat.	p-value	Stat.	p-value
<i>Aetea sica</i>	38%	↘	0.76	0.008		
<i>Botryllus schlosseri</i>	13%	↘				
<i>Bugula neritina*</i>	10%	↗				
<i>Schizoporella errata</i>	9%	↘				
<i>Celleporaria brunnea*</i>	4%	↗				

Chateau Marina						
Species	SIMPER Score	Effect of warming	Indicator species control		Indicator species heated	
			Stat.	p-value	Stat.	p-value
<i>Bugula neritina*</i>	28%	↘	0.78	0.015		
<i>Ciona intestinalis</i>	20%	↘	0.89	0.007		
<i>Electra pilosa</i>	12%	↘	0.84	0.040		
<i>Clytia hemisphaerica</i>	11%	↗				
<i>Didemnum vexillum*</i>	10%	↘	0.90	0.015		
<i>Spirobranchus triqueter</i>	(4%)	↗			0.90	0.047
<i>Cryptosula pallasiana*</i>	(3%)	↗			0.91	0.033

223

224

225 Ash free dry mass (AFDM) varied significantly between treatments for both marinas (ANOVA, $R^2 > 0.56$,
 226 $p < 0.005$; Fig. 4) with lower biomass in the heated treatment. Accordingly, empty space was
 227 significantly higher in the heated treatment for both marinas (Poisson glm, $z > 2.28$, $p < 0.022$; Fig. 4 A
 228 B). The absolute cover exerted by NIS as well as the ratio of NIS cover on total cover (proportional
 229 cover) was higher in the heated treatment for Carry-le-Rouet (Poisson glm, $z = 2.149$, $p = 0.0317$; Fig.
 230 4 C; ANOVA, $R^2 = 0.29$, p value = 0.063). In the Chateau marina the absolute cover was significantly
 231 lower in the heated treatment while the proportional cover remained unaffected (Poisson glm, $z = -$
 232 5.36, $p < 0.001$; Fig. 4 D; ANOVA, NS).

233

234

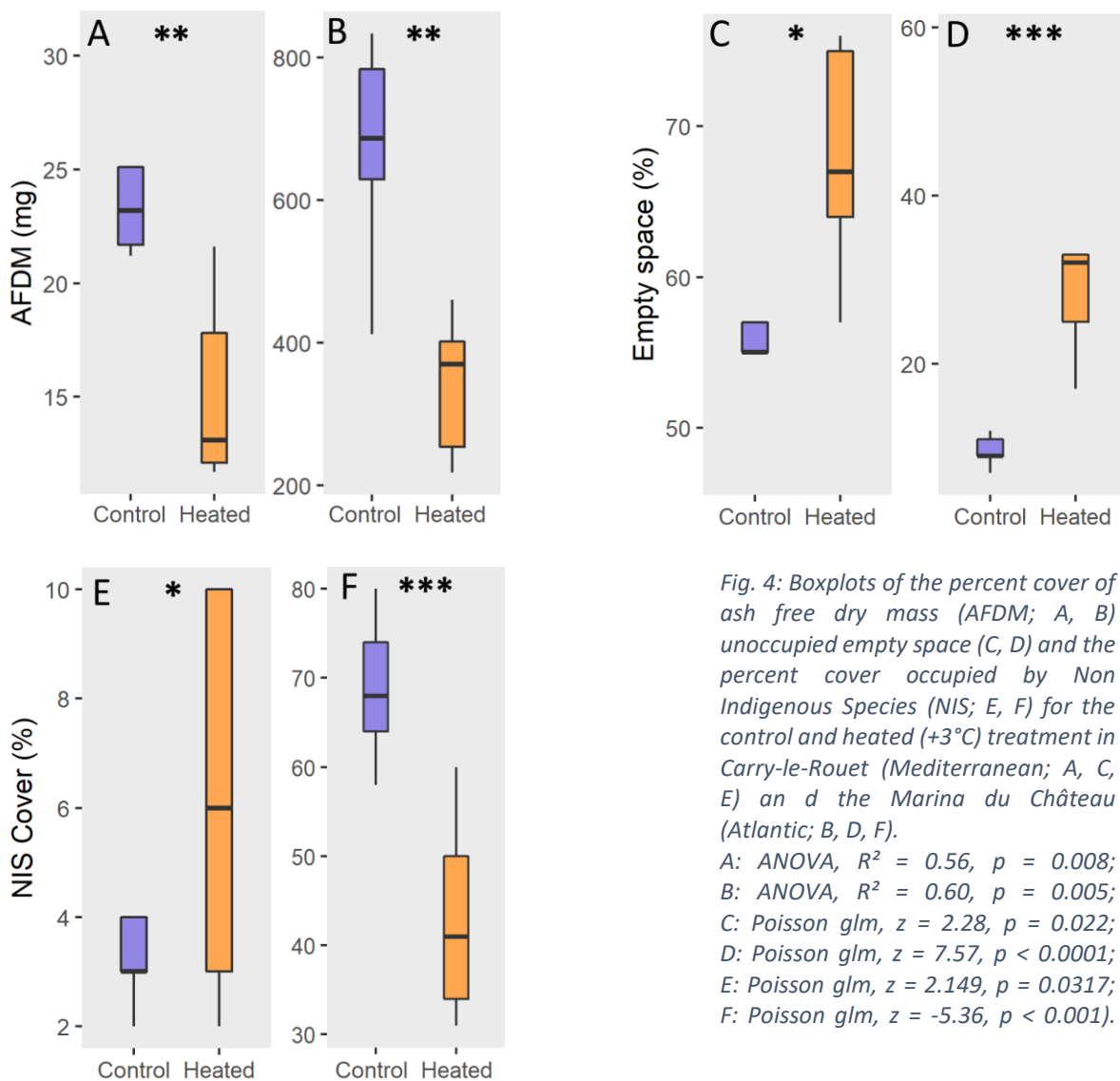


Fig. 4: Boxplots of the percent cover of ash free dry mass (AFDM; A, B) unoccupied empty space (C, D) and the percent cover occupied by Non Indigenous Species (NIS; E, F) for the control and heated (+3°C) treatment in Carry-le-Rouet (Mediterranean; A, C, E) and the Marina du Château (Atlantic; B, D, F).

A: ANOVA, $R^2 = 0.56$, $p = 0.008$;
 B: ANOVA, $R^2 = 0.60$, $p = 0.005$;
 C: Poisson glm, $z = 2.28$, $p = 0.022$;
 D: Poisson glm, $z = 7.57$, $p < 0.0001$;
 E: Poisson glm, $z = 2.149$, $p = 0.0317$;
 F: Poisson glm, $z = -5.36$, $p < 0.001$.

235

236

237 **Metabolome analysis**

238 The metabolome of *Bugula neritina* showed a marginally significant difference between the control
 239 and the heated treatment (Fig. 5; MVA: CER = 0.181, p-value = 0.052). A total of 12 molecules were
 240 found to vary significantly between treatments. Seven had a significant 1.5-fold under expression while
 241 5 had a significant 1.5-fold overexpression (t-Test, $p < 0.05$; Fig. 6). From these molecules, we were
 242 able to identify 6 (Tab. 2). A molecule identified as a Bromo-Oxo-Quinoline-Carboxylic Acid (BQA) had
 243 a fragmentation pattern (Sup. Fig. 2) compatible with a previously described molecule (Caelestine A;
 244 7-bromo-4-oxo-1,4-dihydroquinoline-2-carboxylic acid; Yin et al. 2010) and was thus compared against
 245 a commercially available Caelestine A. Extracted ion chromatogram and fragmentation pattern were
 246 identical (Sup. Fig. 3).

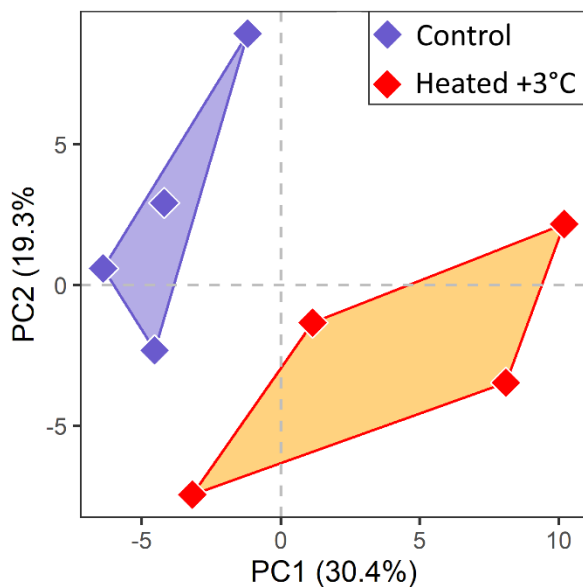
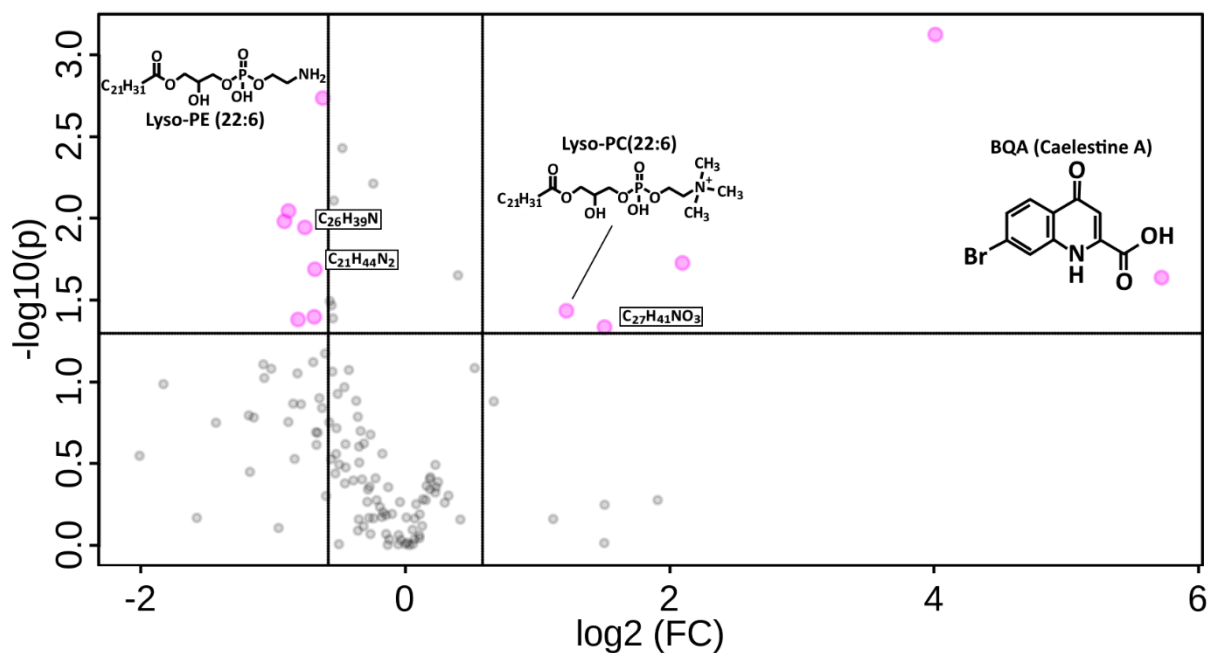


Fig. 5: Principal Component Analysis (PCA) of the metabolome of *Bugula neritina* for the control and heated (+3°C) treatments in the Chateau marina (MVA: CER = 0.181, p-value = 0.052).



258 Fig. 6: Volcano plot showing molecules of the metabolome of *Bugula neritina* in the Chateau marina (Atlantic)
 259 with a significant (*t*-test; $p < 0.05$) fold change ($FC > 1.5$) in the heated (+3°C) treatment compared to control
 260 (indicated by larger dots on plot). Left: underexpressed molecules compared to control; Right: overexpressed
 261 molecules compared to control. The x-intercepts correspond to -1.5 and 1.5 FC. The y-intercept corresponds to a
 262 *p*-value of 0.05. Molecules from Tab. 2 indicated.

263 Tab. 2: Identified molecules with a significant fold change (FC) between heated vs control treatments in *Bugula*
 264 *neritina* in the Chateau marina. Identification confidence levels are indicated (Schymanski et al. 2014): 5 Exact
 265 mass (with tentative formula), 4 Unequivocal molecular formula, 3 Tentative candidate (structure), 2b Probable
 266 structure by diagnostic evidence, 1 Confirmed structure by reference standard.

Molecule	Formula	m/z	rt	FC	p.value	Confidence level
C ₂₁ H ₄₄ N ₂	C ₂₁ H ₄₄ N ₂	325.36	538	↘ 0,54	0,01	5
C ₂₆ H ₃₉ N	C ₂₆ H ₃₉ N	366.32	648	↘ 0,59	0,01	4
Lyso-PE (22:6)	C ₂₇ H ₄₄ NO ₇ P	526.29	612	↘ 0,65	< 0.001	2b
Lyso-PC (22:6)	C ₃₀ H ₅₀ NO ₇ P	568.34	623	↗ 2,33	0,04	2b
C ₂₇ H ₄₁ NO ₃	C ₂₇ H ₄₁ NO ₃	428.32	769	↗ 2,84	0,05	5 to 4
Caelestine A	C ₁₀ H ₆ BrNO ₃	267.96	394	↗ 52,73	0,02	1

267

268 Discussion

269 The present results indicate that long-term warming due to climate change may affect marina
 270 communities and the metabolism of certain species. We chose to simulate *in situ* a seawater warming
 271 of +3°C compared to the control in accordance with the mean estimate of global surface temperature
 272 increase projected in RCP8.5 (IPCC 2019). Simulated warming in mesocosms (Sorte et al. 2010b) and
 273 *in situ* (Smale et al. 2011, 2017; Ashton et al. 2017) has been shown to strongly impact communities
 274 favoring opportunistic species and NIS. In accordance with these previous observations, our present
 275 case revealed significant differences in the recruited communities between heated and control
 276 treatments in both marinas, which was associated to lower biomass (AFDM) and higher empty space
 277 in the heated treatment. At Carry-le-Rouet (Carry, Mediterranean Sea), this coincided with higher
 278 absolute and proportional abundance of non-indigenous species in the heated treatment. In the
 279 marina du Chateau de Brest (Chateau, Atlantic) however, NIS were negatively impacted by warming,
 280 just as were natives as shown by the constant proportional abundance. Yet, *Cryptosula pallasiana*,
 281 native from the Mediterranean but introduced in the Atlantic, has been identified as an indicator
 282 species of the heated treatment in the Chateau marina. No data on the thermal tolerance of this
 283 species is available in the literature. However, it seems reasonable to assume that this tolerance should
 284 be above the temperatures observed in the Atlantic marina due to its origin (Mediterranean Sea). In
 285 its introduced habitat, it has been shown to almost double its growth rate at 18°C compared to 4°C
 286 (Amui-Vedel et al. 2007), which may explain our observations. While anecdotal, this might indicate
 287 that this species could have profited from our simulated warming.

288 The higher temperature did however not only influence the settlement dynamics on the panels, but
289 also had an impact on the metabolism of our model species. In Carry we were unfortunately unable to
290 sample *B. neritina* since too few individuals were present (mainly in the control). In the Chateau marina
291 however, a slight difference between the metabolome of the heated and the control treatment is
292 visible in the PCA and MVA test.

293 A total of 12 molecules had significant fold changes ($FC > 1.5$) between the treatments. Most notably
294 two phospholipids (Glycerophosphoethanolamine, Lyso-PE (22:6) and Glycerophosphocholine, Lyso-
295 PC (22:6)) and a Bromo-Oxo-Quinolinecarboxylic Acid (BQA), were identified as significantly affected
296 molecules. We were able to confirm the BQA structure and to match it with a commercially available
297 standard for Caelestine A, a molecule described in the ascidian *Aplidium caelestis* (Yin et al. 2010). QA
298 derivatives (especially brominated ones) have rarely been identified in nature and their exact function
299 is thus difficult to establish (Yin et al. 2010). Caelestines have been shown to have minor cyto- and
300 bacterio-toxicity at high concentrations (Yin et al. 2010). Quinolinecarboxylic acids (QA) seem to inhibit
301 the activity of one of the most common protein kinases, Protein Kinase CK2 (Syniugin et al. 2016),
302 which has numerous functions including inhibiting apoptosis and whose activity seems to increase with
303 cellular stress (Manni et al. 2012; Piazza et al. 2012). Considering the very high overexpression of
304 Caelestine A in the heated treatment and the implication of QAs with the inhibition of CK2, this
305 molecule might be linked to the stress response of *Bugula neritina* to heat stress. While yet speculative
306 the implication of Caelestine A in heat stress response should be further investigated in future
307 experiments with *B. neritina* and other species like *A. caelestis*.

308 Two phospholipids varied between the control and the heated treatment (Lyso-PC (22:6) and Lyso-PE
309 (22:6)). Phospholipids play a major role in cell membrane fluidity, which changes as a response to
310 ambient temperature (Pruitt 1990; Cuculescu et al. 1995; Sung et al. 2003; Chen et al. 2016). The type
311 of lipids used as well as the number of unsaturation is a key component in this response (Pruitt 1990;
312 Cuculescu et al. 1995). It is interesting to note that in our case, both phospholipids have the same
313 adducts. Lyso-PC (22:6) might results directly from the conversion of Lyso-PE (22:6) trough successive
314 methylation by the phosphatidylethanolamine N-methyltransferase (Gibellini and Smith 2010),
315 indicating that this conversion is associated to the increased heat. In the marine seaweed *Pyropia sp.*
316 long term warming and short term heat shocks modified Lyso-PC and Lyso-PE concentrations generally
317 increasing the first and decreasing the latter (Chen et al. 2016; Song et al. 2018), which corresponds to
318 our observed results. Furthermore, PC and PE of different length including PC (22:6) and PE (22:6) have
319 been shown to vary in the crabs *Carcinus maenas* and *Cancer pagurus* in respect to temperature
320 (Cuculescu et al. 1995). The same Lyso-PE has also been previously described in *B. neritina*, varying
321 according to environmental conditions in the Chateau marina (Gauff et al. in prep a). It may constitute

322 a marker of good environmental conditions as Lyso-PE may play a role in gametogenesis in certain
323 marine organisms (Ivanisevic et al. 2011).

324 It is interesting to note that despite apparent similarities of the effect of +3°C warming in both marinas
325 (Community differences, lower biomass, more empty space), the effect of warming on NIS prevalence
326 was opposite, including *B. neritina*: in the Chateau marina the higher temperature led to lower
327 abundance of NIS indicating that the generated heat stress may cause a disadvantage. This is further
328 supported by the metabolomic differences between heated and control treatment in the Chateau
329 marina, potentially indicating heat stress in *B. neritina*. Yet, in Carry-le-Rouet NIS, including *B. neritina*,
330 had an increased abundance in the heated treatment. This last result is more in adequation with
331 anterior results from the literature, with opportunistic species and NIS having higher biomass in warm
332 treatments (Smale et al. 2011, 2017; Ashton et al. 2017). Moreover, an increased growth of *B. neritina*
333 under higher temperatures has also been reported (Lord 2017) and numerous NIS, including *B.*
334 *neritina*, have been shown to have high thermal tolerance (Hitoshi and Kazutsugu 1984; Zerebecki and
335 Sorte 2011; Lejeusne et al. 2014; Lord 2017; Kenworthy et al. 2018a). However, strong variation (up to
336 2°C) in temperature tolerance among geographically separated populations of several fouling species,
337 including *B. neritina*, has been reported (Sorte et al. 2011; Zerebecki and Sorte 2011). This may be due
338 to adaptation and/or acclimation of populations to their local climate and its variability (Sorte et al.
339 2011). Tolerance to temperature-related stress may be acquired through numerous cellular pathways
340 (Sung et al. 2003). Such tolerance can be increased in an invasive species by the exposure to stress
341 (Clutton et al. 2021) by modifying epigenetics (Ardura et al. 2018) or be modulated by maternal effects
342 (Burgess and Marshall 2011). High temperature heatwaves in a marina close to Carry-le-Rouet have
343 been shown to lead to summer mass mortality for numerous species including *B. neritina* (Gauff et al.
344 in prep b). It may be possible that the regular exposure of Mediterranean sessile communities to high
345 temperatures and heat waves (Garrabou et al. 2009; Lejeusne et al. 2010) increases the thermal
346 tolerance of present NIS, thus allowing their spread in warmer water. Conversely, the water
347 temperature in the vicinity of the Chateau marina is more constant due to rarer heatwaves and higher
348 water mixing due to higher tides and wave action (no stratification). This may explain why the
349 simulated warming strongly impacted the present NIS which would not be accustomed to such
350 disturbance.

351 The present results indicate that in the short term, climate change related ocean surface warming
352 might not have the same effect on the prevalence of non-indigenous species everywhere. Certain
353 locations, where regular heat events are already experienced, might have a higher risk at favoring them
354 compared to cooler and more stable climates. This might be attributed to heat resistant individuals
355 being favored by the intense selection exerted by heat waves. The impact of climate change might thus

356 also depend on how global warming modifies cooler temperate climates and if this increases extreme
357 weather events like heat waves. It is crucial that further studies investigate *in situ* how heat waves and
358 global warming influence marine urban communities and impact of NIS within. These studies might
359 also integrate the conjoint effect of ocean acidification due to increased CO₂ concentrations and
360 temperature as they both are likely to highly influence, which species profit from climate change.

361

362 **References**

363 Amui-Vedel, A. M., P. J. Hayward, and J. S. Porter. 2007. Zooid size and growth rate of the
364 bryozoan *Cryptosula pallasiana* Moll in relation to temperature, in culture and in its
365 natural environment. *J. Exp. Mar. Bio. Ecol.* **353**: 1–12.
366 doi:10.1016/j.jembe.2007.02.020

367 Ardura, A., L. Clusa, A. Zaiko, E. Garcia-Vazquez, and L. Miralles. 2018. Stress related
368 epigenetic changes may explain opportunistic success in biological invasions in
369 Antipode mussels. *Sci. Rep.* **8**: 1–10. doi:10.1038/s41598-018-29181-4

370 Ashton, G. V., S. A. Morley, D. K. A. Barnes, M. S. Clark, and L. S. Peck. 2017. Warming by 1°C
371 Drives Species and Assemblage Level Responses in Antarctica’s Marine Shallows. *Curr.*
372 *Biol.* **27**: 2698-2705.e3. doi:10.1016/j.cub.2017.07.048

373 Ayres, M. P., and M. J. Lombardero. 2000. Assessing the consequences of global change for
374 forest disturbance from herbivores and pathogens. *Sci. Total Environ.* **262**: 263–286.
375 doi:10.1016/S0048-9697(00)00528-3

376 Bianchi, C. N. 1981. Guide per il riconoscimento delle specie animali delle acque lagunari e
377 costiere italiane - Policheti Serpuloidei, Consiglio Nazionale delle Ricerche, 25pp.

378 Blackburn, T. M., P. Pyšek, S. Bacher, J. T. Carlton, R. P. Duncan, V. Jarošík, J. R. U. Wilson,
379 and D. M. Richardson. 2011. A proposed unified framework for biological invasions.
380 *Trends Ecol. Evol.* **26**: 333–339. doi:10.1016/j.tree.2011.03.023

381 Borja, A., J. H. Andersen, C. D. Arvanitidis, and others. 2020. Past and Future Grand
382 Challenges in Marine Ecosystem Ecology. *Front. Mar. Sci.* **7**.
383 doi:10.3389/fmars.2020.00362

384 Bradley, B., E. Beaury, E. Fusco, B. Laginhas, and V. Pasquarella. 2018. Regional Invasive
385 Species & Climate Change Management Challenge: Preparing for sleeper species.
386 Environ. Conserv. Educ. Mater. doi:<https://doi.org/10.7275/R5F18WXT>

387 Brans, K. I., M. Jansen, J. Vanoverbeke, and others. 2017. The heat is on: genetic adaptation
388 to urbanization mediated by thermal tolerance and body size. *Glob. Chang. Biol.* **23**: 0–
389 2. doi:10.1111/ijlh.12426

390 Brunetti, R., and F. Mastrototaro. 2017. Ascidiacea of the European waters, N.B.M.
391 Edagricole [ed.]. Edagricole - New Business Media, 447 pp.

392 Burgess, S. C., and D. J. Marshall. 2011. Temperature-induced maternal effects and
393 environmental predictability. *J. Exp. Biol.* **214**: 2329–2336. doi:10.1242/jeb.054718

394 Cabral, H., V. Fonseca, T. Sousa, and M. C. Leal. 2019. Synergistic effects of climate change
395 and marine pollution: An overlooked interaction in coastal and estuarine areas. *Int. J.*
396 *Environ. Res. Public Health* **16**: 1–17. doi:10.3390/ijerph16152737

397 De Cáceres, M. 2013. R package: indicpecies. *R Proj.* 29.

398 Cáceres, M. De, D. Sol, O. Lapiedra, and P. Legendre. 2011. A framework for estimating niche
399 metrics using the resemblance between qualitative resources. *Oikos* **120**: 1341–1350.
400 doi:10.1111/J.1600-0706.2011.19679.X

401 Castro, N., P. Ramalhosa, E. Cacabelos, J. L. Costa, J. Canning-clode, and I. Gestoso. 2021.
402 Winners and losers : prevalence of non-indigenous species under simulated marine
403 heatwaves and high propagule pressure. *Mar. Ecol. Prog. Ser.* **668**: 21–38.
404 doi:10.3354/meps13710

405 Chapman, S., J. E. M. Watson, A. Salazar, M. Thatcher, and C. A. McAlpine. 2017. The impact
406 of urbanization and climate change on urban temperatures: a systematic review.
407 *Landsc. Ecol.* 2017 3210 **32**: 1921–1935. doi:10.1007/S10980-017-0561-4

408 Chen, J., M. Li, R. Yang, Q. Luo, J. Xu, Y. Ye, and X. Yan. 2016. Profiling lipidome changes of
409 *Pyropia haitanensis* in short-term response to high-temperature stress. *J. Appl. Phycol.*
410 **28**: 1903–1913. doi:10.1007/s10811-015-0733-z

411 Clutton, E. , G. Allurralde, and T. Repolho. 2021. Early developmental stages of native

412 populations of *Ciona intestinalis* under increased temperature are affected by local
413 habitat history. *J. Exp. Biol.* **224**. doi:10.1242/jeb.233403

414 Collier, C. J., and M. Waycott. 2014. Temperature extremes reduce seagrass growth and
415 induce mortality. *Mar. Pollut. Bull.* **83**: 483–490. doi:10.1016/j.marpolbul.2014.03.050

416 Cuculescu, M., D. Hyde, and K. Bowler. 1995. Temperature acclimation of marine crabs:
417 Changes in plasma membrane fluidity and lipid composition. *J. Therm. Biol.* **20**: 207–
418 222. doi:10.1016/0306-4565(94)00058-Q

419 Garrabou, J., R. Coma, N. Bensoussan, and others. 2009. Mass mortality in Northwestern
420 Mediterranean rocky benthic communities: Effects of the 2003 heat wave. *Glob. Chang.*
421 *Biol.* **15**: 1090–1103. doi:10.1111/j.1365-2486.2008.01823.x

422 Gauff, R. P. M., D. Davoult, O. Bohner, J. Coudret, S. Jacquet, S. Loisel, S. Rondeau, and C.
423 Lejeusne. Dead Heat - Heat waves can contribute to environmental homogenization
424 with few winners in marine urban communities.

425 Gauff, R. P. M., D. Davoult, S. Greff, and others. Pollution gradient leads to local adaptation
426 and small-scale spatial variability of communities and functions in an urban marine
427 environment. *Sci. Total Environ.*

428 Gewing, M. T., E. Goldstein, Y. Buba, and N. Shenkar. 2019. Temperature resilience facilitates
429 invasion success of the solitary ascidian *Herdmania momus*. *Biol. Invasions* **21**: 349–361.
430 doi:10.1007/s10530-018-1827-8

431 Gibellini, F., and T. K. Smith. 2010. The Kennedy pathway-de novo synthesis of
432 phosphatidylethanolamine and phosphatidylcholine. *IUBMB Life* **62**: 414–428.
433 doi:10.1002/iub.337

434 Hanson, P. J., and J. F. Weltzin. 2000. Drought disturbance from climate change: Response of
435 United States forests. *Sci. Total Environ.* **262**: 205–220. doi:10.1016/S0048-
436 9697(00)00523-4

437 Hayward, P. ., and J. S. Ryland. 1985. Cyclostome Bryozoans (Synopsis of the British Fauna
438 34), Field Studies Council, 147pp.

439 Hayward, P. J., and J. S. Ryland. 1979. British ascophoran bryozoans, Linnean Society of

440 London, Academic Press, 312 pp.

441 Hayward, P. J., and J. S. Ryland. 1995. Handbook of the Marine Fauna of North-West Europe,
442 P.J. Hayward and J.S. Ryland [eds.]. Oxford university press, 800 pp.

443 Hayward, P. J., and J. S. Ryland. 1998. Cheilostomatous bryozoa (Part 1), The Linnean Society
444 of London and The Estuarine and Coastal Sciences Association [ed.]. Field Studies
445 Council, 366pp.

446 Hervé, M. 2021. Package 'RVAideMemoire', Testing and Plotting Procedures for Biostatistics
447 Version.

448 Hitoshi, K., and H. Kazutsugu. 1984. Growth of the Bryozoan *Bugula neritina* in the Sea at
449 Various Water Temperatures. Bull. Japanese Soc. Sci. Fish. **50**: 1–5.

450 Hughes, A. T. P., a H. Baird, D. R. Bellwood, and others. 2003. Climate Change , Human
451 Impacts , and the Resilience of Coral Reefs. Science (80-.). **301**: 929–933.
452 doi:10.1126/science.1085046

453 IPCC. 2019. Foreword Technical and Preface.

454 IPCC. 2021. AR6 Climate Change 2021: The Physical Science Basis, Technical report.

455 Ivanisevic, J., T. Pérez, A. V. Ereskovsky, G. Barnathan, and O. P. Thomas. 2011.
456 Lysophospholipids in the Mediterranean Sponge *Oscarella tuberculata*: Seasonal
457 Variability and Putative Biological Role. J. Chem. Ecol. **37**: 537–545.
458 doi:10.1007/s10886-011-9943-2

459 Je, J. G., T. Belan, C. Levings, and B. J. Koo. 2004. Changes in benthic communities along a
460 presumed pollution gradient in Vancouver Harbour. *Marine Environmental Research*.
461 Elsevier Ltd. 121–135.

462 Johnston, M. W., S. J. Purkis, and R. E. Dodge. 2015. Measuring Bahamian lionfish impacts to
463 marine ecological services using habitat equivalency analysis. Mar. Biol. **162**: 2501–
464 2512. doi:10.1007/s00227-015-2745-2

465 Kenworthy, J. M., D. Davoult, and C. Lejeusne. 2018a. Compared stress tolerance to short-
466 term exposure in native and invasive tunicates from the NE Atlantic: when the invader
467 performs better. Mar. Biol. **165**: 1–11. doi:10.1007/s00227-018-3420-1

468 Kenworthy, J. M., G. Rolland, S. Samadi, and C. Lejeusne. 2018b. Local variation within
469 marinas: Effects of pollutants and implications for invasive species. *Mar. Pollut. Bull.*
470 **133**: 96–106. doi:10.1016/j.marpolbul.2018.05.001

471 Van Der Kloet, F. M., I. Bobeldijk, E. R. Verheij, and R. H. Jellema. 2009. Analytical error
472 reduction using single point calibration for accurate and precise metabolomic
473 phenotyping. *J. Proteome Res.* **8**: 5132–5141. doi:10.1021/pr900499r

474 Lejeusne, C., P. Chevaldonné, C. Pergent-Martini, C. F. Boudouresque, and T. Pérez. 2010.
475 Climate change effects on a miniature ocean: the highly diverse, highly impacted
476 Mediterranean Sea. *Trends Ecol. Evol.* **25**: 250–260. doi:10.1016/j.tree.2009.10.009

477 Lejeusne, C., O. Latchere, N. Petit, C. Rico, and A. J. Green. 2014. Do invaders always perform
478 better? Comparing the response of native and invasive shrimps to temperature and
479 salinity gradients in south-west Spain. *Estuar. Coast. Shelf Sci.* **136**: 102–111.
480 doi:10.1016/j.ecss.2013.11.014

481 Lonhart, S. I., R. Jeppesen, R. Beas-Luna, J. A. Crooks, and J. Lorda. 2019. Shifts in the
482 distribution and abundance of coastal marine species along the eastern Pacific Ocean
483 during marine heatwaves from 2013 to 2018. *Mar. Biodivers. Rec.* **12**: 1–15.
484 doi:10.1186/s41200-019-0171-8

485 Lord, J. P. 2017. Impact of seawater temperature on growth and recruitment of invasive
486 fouling species at the global scale. *Mar. Ecol.* **38**: e12404. doi:10.1111/maec.12404

487 Luo, Z., O. J. Sun, Q. Ge, W. Xu, and J. Zheng. 2006. Phenological responses of plants to
488 climate change in an urban environment. *Ecol. Res.* 2006 223 **22**: 507–514.
489 doi:10.1007/S11284-006-0044-6

490 Manni, S., A. Brancalion, L. Q. Tubi, and others. 2012. Human Cancer Biology Protein Kinase
491 CK2 Protects Multiple Myeloma Cells from ER Stress-Induced Apoptosis and from the
492 Cytotoxic Effect of HSP90 Inhibition through Regulation of the Unfolded Protein
493 Response. *Hum. Cancer Biol.* **18**. doi:10.1158/1078-0432.CCR-11-1789

494 Occhipinti-Ambrogi, A., and B. S. Galil. 2004. A uniform terminology on bioinvasions: A
495 chimera or an operative tool? *Mar. Pollut. Bull.* **49**: 688–694.
496 doi:10.1016/j.marpolbul.2004.08.011

497 Ojaveer, H., B. S. Galil, M. L. Campbell, and others. 2015. Classification of Non-Indigenous
498 Species Based on Their Impacts: Considerations for Application in Marine Management.
499 PLoS Biol. **13**: 1–13. doi:10.1371/journal.pbio.1002130

500 Oksanen, J., F. G. Blanchet, R. Kindt, and others. 2018. Vegan: community ecology package. R
501 Packag. Version 2. 4-6. doi:10.1093/molbev/msv334

502 Osborne, K. L., and H. C. Poynton. 2019. Copper pollution enhances the competitive
503 advantage of invasive ascidians. *Manag. Biol. Invasions* **10**: 641–656.
504 doi:10.3391/mbi.2019.10.4.05

505 Pansch, C., M. Scotti, F. R. Barboza, and others. 2018. Heat waves and their significance for a
506 temperate benthic community: A near-natural experimental approach. *Glob. Chang.*
507 *Biol.* **24**: 4357–4367. doi:10.1111/gcb.14282

508 Pejchar, L., and H. A. Mooney. 2009. Invasive species, ecosystem services and human well-
509 being. *Trends Ecol. Evol.* **24**: 497–504. doi:10.1016/j.tree.2009.03.016

510 Piazza, F., S. Manni, M. Ruzzene, L. A. Pinna, C. Gurrieri, and G. Semenzato. 2012. Protein
511 kinase CK2 in hematologic malignancies: reliance on a pivotal cell survival regulator by
512 oncogenic signaling pathways. *Leukemia*. doi:10.1038/leu.2011.385

513 Piola, R. F., and E. L. Johnston. 2008. Pollution reduces native diversity and increases invader
514 dominance in marine hard-substrate communities. *Divers. Distrib.* **14**: 329–342.
515 doi:10.1111/j.1472-4642.2007.00430.x

516 Pruitt, N. L. 1990. Adaptations to temperature in the cellular membranes of crustacea:
517 membrane structure and metabolism. *J. Therm. Biol.* **15**: 1–8. doi:10.1016/0306-
518 4565(90)90040-O

519 Raftery, A. E., A. Zimmer, D. M. W. Frierson, R. Startz, and P. Liu. 2017. Less than 2 °C
520 warming by 2100 unlikely. *Nat. Clim. Chang.* **7**: 637–641. doi:10.1038/nclimate3352

521 Riedl, R. 1983. *Fauna und Flora des Mittelmeeres: Ein systematischer Meeresführer für*
522 *Biologen und Naturfreunde (German Edition)*, 3rd ed. Parey, P., 836 pp.

523 Schymanski, E. L., J. Jeon, R. Gulde, K. Fenner, M. Ruff, H. P. Singer, and J. Hollender. 2014.
524 Identifying small molecules via high resolution mass spectrometry: Communicating

525 confidence. *Environ. Sci. Technol.* **48**: 2097–2098. doi:10.1021/es5002105

526 Smale, D. A., J. D. Taylor, S. H. Coombs, G. Moore, and M. Cunliffe. 2017. Community
527 responses to seawater warming are conserved across diverse biological groupings and
528 taxonomic resolutions. *Proc. R. Soc. B* **284**: 20170534. doi:10.1098/rspb.2017.0534

529 Smale, D. A., T. Wernberg, L. S. Peck, and D. K. A. Barnes. 2011. Turning on the Heat :
530 Ecological Response to Simulated Warming in the Sea. *PLoS One* **6**: e16050.
531 doi:10.1371/journal.pone.0016050

532 Smale, D. A., A. L. E. Yunnice, T. Vance, and W. Stephen. 2015. Disentangling the impacts of
533 heat wave magnitude, duration and timing on the structure and diversity of sessile
534 marine assemblages. *PeerJ*. doi:10.7717/peerj.863

535 Smith, C. A., E. J. Want, G. O’Maille, R. Abagyan, and G. Siuzdak. 2006. XCMS: processing
536 mass spectrometry data for metabolite profiling using nonlinear peak alignment,
537 matching, and identification. *Anal. Chem.* **78**: 779–787.

538 Sokolova, I. M., and G. Lannig. 2008. Interactive effects of metal pollution and temperature
539 on metabolism in aquatic ectotherms: Implications of global climate change. *Clim. Res.*
540 **37**: 181–201. doi:10.3354/cr00764

541 Song, Y., J. Zhao, J. Chen, Q. Luo, R. Yang, J. Xu, H. Chen, and X. Yan. 2018. Heat shock-
542 induced metabolic conversion of membrane lipids, fatty acids and volatile organic
543 compounds of *Pyropia haitanensis* under different heat shock time. *Phycol. Res.* **66**: 89–
544 99. doi:10.1111/pre.12206

545 Sork, V. L. 2018. Genomic Studies of Local Adaptation in Natural Plant Populations. *J. Hered.*
546 3–15. doi:10.1093/jhered/esx091

547 Sorte, C. J. B., A. Fuller, and M. E. S. Bracken. 2010a. Impacts of a simulated heat wave on
548 composition of a marine community. *Oikos* **119**: 1909–1918. doi:10.1111/j.1600-
549 0706.2010.18663.x

550 Sorte, C. J. B., S. J. Jones, and L. P. Miller. 2011. Geographic variation in temperature
551 tolerance as an indicator of potential population responses to climate change. *J. Exp.*
552 *Mar. Bio. Ecol.* **400**: 209–217. doi:10.1016/j.jembe.2011.02.009

553 Sorte, C. J. B., S. L. Williams, and R. A. Zerebecki. 2010b. Ocean warming increases threat of
554 invasive species in a marine fouling community. *Ecology* **91**: 2198–2204.
555 doi:10.1890/10-0238.1

556 Spear, M. J., J. R. Walsh, A. Ricciardi, and M. J. Vander Zanden. 2021. The Invasion Ecology of
557 Sleeper Populations: Prevalence, Persistence, and Abrupt Shifts. *Bioscience* **71**: 357–
558 369. doi:10.1093/biosci/biaa168

559 Sung, D. Y., F. Kaplan, K. J. Lee, and C. L. Guy. 2003. Acquired tolerance to temperature
560 extremes. *Trends Plant Sci.* **8**: 179–187. doi:10.1016/S1360-1385(03)00047-5

561 Syniugin, A. R., O. V Ostrynska, M. O. Chekanov, G. P. Volynets, S. A. Starosyla, V. G. Bdzhola,
562 and S. M. Yarmoluk. 2016. Design, synthesis and evaluation of 3-quinoline carboxylic
563 acids as new inhibitors of protein kinase CK2 Design, synthesis and evaluation of 3-
564 quinoline carboxylic acids as new inhibitors of protein kinase CK2. *J. Enzyme Inhib. Med.*
565 *Chem.* **31**: 160–169. doi:10.1080/14756366.2016.1222584

566 Taormina, B., M. P. Marzloff, N. Desroy, X. Caisey, O. Dugornay, E. Metral Thiesse, A.
567 Tancray, and A. Carlier. 2020. Optimizing image-based protocol to monitor
568 macroepibenthic communities colonizing artificial structures. *ICES J. Mar. Sci.* **77**: 835–
569 845. doi:10.1093/icesjms/fsz249

570 Todd, P. A., E. C. Heery, L. H. L. Loke, R. H. Thurstan, D. J. Kotze, and C. Swan. 2019. Towards
571 an urban marine ecology: characterizing the drivers, patterns and processes of marine
572 ecosystems in coastal cities. *Oikos* **128**: 1215–1242. doi:10.1111/oik.05946

573 UN. 2015. ADOPTION OF THE PARIS AGREEMENT.

574 Vilizzi, L., G. H. Copp, J. E. Hill, and others. 2021. A global-scale screening of non-native
575 aquatic organisms to identify potentially invasive species under current and future
576 climate conditions. *Sci. Total Environ.* **788**. doi:10.1016/j.scitotenv.2021.147868

577 Wahl, M., B. Buchholz, V. Winde, and others. 2015. A mesocosm concept for the simulation
578 of near-natural shallow underwater climates: The Kiel Outdoor Benthocosms (KOB).
579 *Limnol. Oceanogr. Methods* **13**: 651–663. doi:10.1002/lom3.10055

580 Waldock, C., M. Dornelas, and A. E. Bates. 2018. Overview Articles Temperature-Driven

- 581 Biodiversity Change: Disentangling Space and Time. *Bioscience* **68**.
582 doi:10.1093/biosci/biy096
- 583 Walsh, J. R., S. R. Carpenter, and M. J. Van Der Zanden. 2016. Invasive species triggers a
584 massive loss of ecosystem services through a trophic cascade. *Proc. Natl. Acad. Sci. U. S.*
585 *A.* **113**: 4081–4085. doi:10.1073/pnas.1600366113
- 586 Wang, M., J. J. Carver, V. V. Phelan, and others. 2016. Sharing and community curation of
587 mass spectrometry data with Global Natural Products Social Molecular Networking.
588 *Nat. Biotechnol.* **34**: 828–837. doi:10.1038/nbt.3597
- 589 Xia, J., N. Psychogios, N. Young, and D. S. Wishart. 2009. MetaboAnalyst: A web server for
590 metabolomic data analysis and interpretation. *Nucleic Acids Res.* **37**: 652–660.
591 doi:10.1093/nar/gkp356
- 592 Yin, S., G. M. Boyle, A. R. Carroll, M. Kotiw, J. Dearnaley, R. J. Quinn, and R. A. Davis. 2010.
593 Caelestines A-D, Brominated Quinolinecarboxylic Acids from the Australian Ascidian
594 *Aplidium caelestis*. *J. Nat. Prod.* **73**: 37. doi:10.1021/np100329w
- 595 Zabala, M., and P. Maluquer. 1988. Illustrated keys for the classification of Mediterranean
596 Bryozoa, 4th ed. Museu de Zoologia Ajuntament de Barcelona.
- 597 Zerebecki, R. A., and C. J. B. Sorte. 2011. Temperature tolerance and stress proteins as
598 mechanisms of invasive species success. *PLoS One* **6**.
599 doi:10.1371/journal.pone.0014806
- 600 Zhang, Z., C. Capinha, D. N. Karger, X. Turon, and H. J. Macisaac. 2020. Impacts of climate
601 change on geographical distributions of invasive ascidians. *Mar. Environ. Res.* 104993.
602 doi:10.1016/j.marenvres.2020.104993
- 603 Zibrowius, H. 1968. Étude Morphologique, Systématique et Écologique, des Serpulidae
604 (Annelida Polychaeta) de la Région de Marseille. *Receuil des Trav. la Stn. Mar.*
605 *d'Endoume* **43**: 18pp.

606 **Declarations**

607 **Funding**

608 Funding for this project has been provided through a PhD grant from the Sorbonne Université -
609 Museum National d'Histoire Naturelle (Ecole Doctorale 227). This work was also supported by the
610 French National Program EC2CO (Ecosphère Continentale et Côtière) and the program 'InPor' of the
611 INEE-CNRS' PEPS EcoMob (PIs: C. Lejeusne and D. Davoult).

612 **Competing Interests**

613 The authors have no relevant financial or non-financial interests to disclose.

614 **Author Contributions**

615 ROBIN GAUFF, CHRISTOPHE LEJEUSNE and DOMINIQUE DAVOULT have elaborated the design and the
616 funding of the study. Experimental setup and technical implementation were realized by STÉPHANE
617 LOISEL and assisted by OLIVIER BOHNER. Chemical (metabolomic) analyses were conducted by ROBIN
618 GAUFF and STÉPHANE GREFF. Fieldwork participation was given by ROBIN GAUFF, CHRISTOPHE
619 LEJEUSNE, STÉPHANE LOISEL, OLIVIER BOHNER, DOMINIQUE DAVOULT. Statistical analysis was
620 conducted by ROBIN GAUFF The initial draft was written by ROBIN GAUFF, CHRISTOPHE LEJEUSNE,
621 DOMINIQUE DAVOULT and contributed to and approved by all authors.