



HAL
open science

Calibration of a green roof hydrological model using global sensitivity analysis

Axelle Hégo, Floriane Collin, Hugues Garnier, R Claverie

► **To cite this version:**

Axelle Hégo, Floriane Collin, Hugues Garnier, R Claverie. Calibration of a green roof hydrological model using global sensitivity analysis. 10th Vienna International Conference on Mathematical Modelling, MATHMOD 2022, Jul 2022, Vienne, Austria. p 17-18. hal-03858629

HAL Id: hal-03858629

<https://hal.science/hal-03858629>

Submitted on 17 Nov 2022

HAL is a multi-disciplinary open access archive for the deposit and dissemination of scientific research documents, whether they are published or not. The documents may come from teaching and research institutions in France or abroad, or from public or private research centers.

L'archive ouverte pluridisciplinaire **HAL**, est destinée au dépôt et à la diffusion de documents scientifiques de niveau recherche, publiés ou non, émanant des établissements d'enseignement et de recherche français ou étrangers, des laboratoires publics ou privés.

Calibration of a green roof hydrological model using global sensitivity analysis

A. Hégo* F. Collin* H. Garnier* R. Claverie**

* *Université de Lorraine, CNRS, CRAN, F-54000, Nancy, France
(axelle.hego, floriane.collin, hugues.garnier@univ-lorraine.fr)*

** *Cerema Est, Team research group, F-54510, Tomblaine, France
(remy.claverie@cerema.fr)*

Abstract:

Green roofs are a sustainable solution to manage water runoff from rain events in urban areas. Modeling hydrological phenomena of green roofs over long period is challenging because of the difficulties to both characterize the soil parameters and to take into account the dynamics of the vegetation and the meteorological variables. The water retention capacity is represented by the Van Genuchten - Mualem model implemented in Hydrus-1D[©]. For the calibration of the model, global sensitivity analysis is performed to quantify the effects of parameter uncertainties on the water retention capacity. The results of this study highlight the most influential parameters on the water retention capacity and lead to an efficient reduction of the parameter uncertainties.

Keywords: Calibration, global sensitivity analysis, green roof, Van Genuchten - Mualem model

1. INTRODUCTION

In the last decade, soil imperviousness has been one of the main urban issues in the Northeast of France. In case of strong rain events, runoff can lead to the discharge of high volume of water and can cause water system saturation. Among all urban-water regulation systems, Green Roofs (GR) can be used to store and delay the release of rainwater to sewers [Li and Badcock Jr (2014)]. GR are also considered as a sustainable solution that offers benefits such as building insulation, urban heat island cooling during summer and air pollution control.

2. GREEN ROOF HYDROLOGICAL MODELLING

The hydrological performances of GR are directly linked to the outflow of a GR which is mainly related to the water content inside the layers. In order to investigate these performances, the water content needs to be measured and simulated.

Real data that have been collected on an in-situ experimental GR installed in Tomblaine, North-East of France. A period of one year has been chosen from January to December 2020 which represents different hydrological phenomena shown in black in Figure 2.

Few models exist to describe the hydrological behavior of soil and can be adapted for GR characteristics such as soil parameters of the different layers, dimension, type of vegetation, etc. In this study, the dynamic of the water content is described by two elements. The first element describes the hydrological infiltration throughout unsaturated porous media and depends on soil parameters. The second element estimates the water extracted from the soil due to the vegetation and the weather conditions.

All these models and equations are implemented in Hydrus-1D[©] software to simulate hydrological behav-

ior [Simunek et al. (2008)]. This software allows the set up of the GR structure, boundary conditions, meteorological data, soil and vegetation parameters in order to reproduce the GR real configuration and can be used as a gray box model with:

- 1 input: rainfall;
- 1 output: Volumetric Water Content *VWC*;
- 6 soil parameters: θ_s , θ_r , n , K_s , α and l ;
- 5 meteorological variables;
- 4 vegetation parameters: *CropH*, *LAI*, *Albedo* and *RootD*.

The aim of this study is to calibrate this model to get closer to the behavior of the real GR. The challenge is that some of the model parameters, as soil or vegetation parameters, are complex to determine as they are difficult to measure accurately through experiments. All the parameter uncertainties are propagated through the simulation of water content and can be analysed to help the calibration. Methods of Global Sensitivity Analysis (GSA) can be applied to quantify the impact of the output of a model. These methods are described in [Hégo et al. (2021)] and will not be detailed here.

In this study, the effects of vegetation and soil parameters need to be simultaneously analysed in order to provide information to calibrate this new configuration of the GR model. The uncertainties of the parameters θ_s , α , n , *CropH*, *LAI* and *RootD* will be analysed. The other parameters are not considered uncertain.

3. MODEL CALIBRATION

Global sensitivity analysis allows to quantify parameter influence on the output model. The least influential parameters are set to their nominal values. This allows to reduce the number of parameters to estimate. The study can then

be focused on the most influential parameters. The idea is to recursively reduce the initial interval of variations of the most influential parameters, in order to converge to the optimal value. For this purpose, the normalized root mean square deviation between the simulated and measured output is used as objective function to minimize.

In this study, the calibration approach can be summarized with these steps:

1. Application of GSA with a large uncertainty interval defined by domain experts;
2. Computation of the error between measured data and the model evaluations generated during the GSA;
3. Reduction of the interval according GSA results and error analysis;
4. Exploration of parameter combinations to find the optimal one.

GSA approach allows to obtain sensitivity index dynamics over time and to point out influence evolution. First-order S_i and total sensitivity ST_i indices are represented at the top of Figure 1. S_i represents the influence of only one parameter and ST_i represents the influence of a parameter and all its interaction. It is worth noting that first-order and total indices are not equal for the parameters α , n and LAI . Higher-order indices are non-zero that means there is influence of interaction between parameters. Sensitivity indices of these three parameters' interactions (second-order $S_{i,q}$) are represented at the bottom of Figure 1.

To calibrate the influential parameters α , n and LAI , an objective function is defined. The normalized root mean square deviation ($nRMSD$) is defined as the quality criteria.

$$nRMSD = \frac{\sqrt{\left(\sum_{t=1}^T (y_{sim}(t) - y_{obs}(t))^2\right)/T}}{y_{obs}^{max} - y_{obs}^{min}}$$

where y_{sim} and y_{obs} denote respectively the simulated and observed output and $t = 1, \dots, T$.

The objective is to find the parameter combinations which minimize $nRMSD$ during periods of interest. These periods of interest are defined following sensitivity index dynamics and correspond to wet period (e.g. 0 to 2000 h), drying period (e.g. 3560 to 4045 h) and when it rains during drying periods (e.g. 2800 h). The $nRMSD$ is computed for each periods and each model evaluations (generated for GSA). The optimal parameter combination is presented in red on Figure 2. The absolute error between the simulated and measured VWC is plotted at the bottom of the figure.

4. DISCUSSIONS AND PERSPECTIVES

In this paper, a calibration approach based on GSA is applied to a GR model in order to reproduce a real configuration. GSA highlights the influence of the parameter uncertainties over time on the model output (Figure 1). The uncertainty interval of the model parameter have been reduced and nominal values have been proposed to reproduce the specific green roof configuration. The simulated data for nominal values are close to the observed data, however some errors are persistent (Figure 2). These differences can be caused by several reasons. For instance, the assumption of non-time-varying vegetation parameters

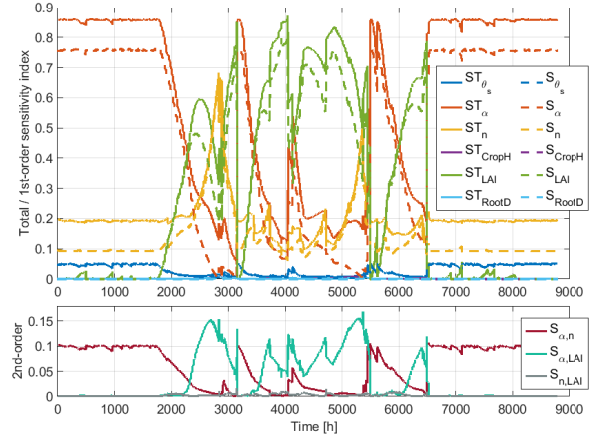


Fig. 1. Sensitivity indices applied to quantify parameter effects on VWC. At the top, total index with solid line and first-order index with dashed line and at the bottom, second-order index.

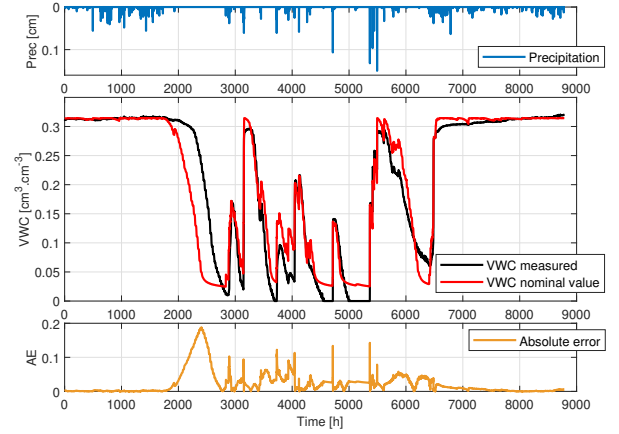


Fig. 2. Comparison of the simulated (red) and measured (black) VWC, absolute error (orange) between the simulated and measured VWC and rainfall (blue).

could have impacted the simulated soil drying. The time-variations of vegetation parameters can be investigated but raise difficulties for sample generation. Moreover, these differences can also highlight the limits of the models and Hydrus-1D[©]. All green roof phenomena may not be exactly reproducible by simulation.

REFERENCES

- Hégo, A., Collin, F., Garnier, H., and Claverie, R. (2021). Approaches for green roof dynamic model analysis using gsa. *IFAC-PapersOnLine*, 54(7), 613–618.
- Li, Y. and Badcock Jr, R. (2014). Green roof hydrologic performance and modeling: a review. *Water Science & Technology*, 69(4), 727–738.
- Simunek, J., Sejna, M., Saito, H., Sakai, M., and van Genuchten, M. (2008). *The HYDRUS-1D software package for simulating one-dimensional movement of water, heat, and multiple solutes in variably saturated media*. Department of Environmental Sciences University of California Riverside, Riverside, California.