



HAL
open science

Recovery of carbon benefits by overharvested baleen whale populations is threatened by climate change

Anaëlle Durfort, Gaël Mariani, Vivitskaia Tulloch, Matthew S Savoca, Marc Troussellier, David Mouillot

► **To cite this version:**

Anaëlle Durfort, Gaël Mariani, Vivitskaia Tulloch, Matthew S Savoca, Marc Troussellier, et al.. Recovery of carbon benefits by overharvested baleen whale populations is threatened by climate change. *Proceedings of the Royal Society B: Biological Sciences*, 2022, 289 (1986), pp.20220375. 10.1098/rspb.2022.0375 . hal-03858200

HAL Id: hal-03858200

<https://hal.science/hal-03858200>

Submitted on 17 Nov 2022

HAL is a multi-disciplinary open access archive for the deposit and dissemination of scientific research documents, whether they are published or not. The documents may come from teaching and research institutions in France or abroad, or from public or private research centers.

L'archive ouverte pluridisciplinaire **HAL**, est destinée au dépôt et à la diffusion de documents scientifiques de niveau recherche, publiés ou non, émanant des établissements d'enseignement et de recherche français ou étrangers, des laboratoires publics ou privés.

1 Recovery of carbon benefits by overharvested baleen whale populations is
2 threatened by climate change
3
4
5

6 Anaëlle Durfort^{1*}, Gaël Mariani¹, Vivitskaia Tulloch², Matthew S. Savoca³, Marc
7 Troussellier¹ & David Mouillot^{1,4}
8
9

10 ¹ MARBEC, University of Montpellier, CNRS, IFREMER, IRD, Montpellier, France

11 ² Department of Forest and Conservation Science, University of British Columbia, Vancouver,
12 Canada

13 ³ Hopkins Marine Station, Stanford University, Pacific Grove, California, USA

14 ⁴ Institut Universitaire de France, Paris, France
15
16

17 * Corresponding author

18 A. Durfort

19 MARine Biodiversity, Exploitation and Conservation UMR 9190 MARBEC

20 Cc093, Bat. 24. Université de Montpellier

21 Rue du Truel

22 34095 Montpellier Cedex 5

23 France

24 Phone: +33 (0)4 67 14 42 97

25 E-mail: anaelle.durfort@umontpellier.fr
26
27

28 **Keywords:** blue carbon, population dynamics, modelling, whaling, climate change scenarios,
29 whales fall, carcasse, deadfall carbon
30
31
32
33
34
35
36
37
38
39
40
41
42
43
44
45
46
47

48 **Abstract**

49 Despite the importance of marine megafauna on ecosystem functioning, their contribution to the
50 oceanic carbon cycle is still poorly known. Here, we explored the role of baleen whales in the
51 biological carbon pump across the southern hemisphere based on the historical and forecasted
52 abundance of five baleen whale species. We modelled whale-mediated carbon sequestration
53 through the sinking of their carcasses after natural death. We provide the first temporal dynamics of
54 this carbon pump from 1890 to 2100, considering both the effects of exploitation and climate change
55 on whale populations. We reveal that at their pre-exploitation abundance, the five species of
56 southern whales could sequester 4.0×10^5 tonnes of carbon per year (tC.yr^{-1}). This estimate dropped
57 to 0.6×10^5 tC.yr^{-1} by 1972 following commercial whaling. However, with projected restoration of
58 whale populations under a RCP8.5 climate scenario, the sequestration would reach 1.7×10^5 tC.yr^{-1} by
59 2100, while without climate change, recovered whale populations could sequester nearly twice as
60 much (3.2×10^5 tC.yr^{-1}) by 2100. This highlights the persistence of whaling damages on whale
61 populations and associated services as well as the predicted harmful impacts of climate change on
62 whale ecosystem services.

63

64 **Introduction**

65 The concentration of atmospheric carbon dioxide has dramatically increased since the beginning of
66 the industrial era, from about 277 parts per million in 1750 to over 412 ppm today (1). The rise of this
67 greenhouse gas in the atmosphere is changing the climate with a range of damaging consequences
68 for ecosystems and human societies (2). Since the Paris agreement in 2015, the international
69 community set the objective of containing the global warming below $+2\text{C}^\circ$ compared to pre-industrial
70 levels (3).

71 The ocean is a primarily regulator of the climate system, absorbing about 23% of anthropogenic CO_2
72 emissions (1) and maintaining a primary production equivalent to that of terrestrial ecosystems (4).
73 In that context, particular attention has been given to understand the drivers of the biological carbon
74 pump and its sequestration potential. Indeed, the open ocean's capacity to sequester carbon mainly
75 relies on the export of organic carbon particles (dead organic matter, faeces) at depth where they
76 can be sequestered for decades, centuries or even longer before returning to surface waters (5).

77 While the contribution of lower trophic levels (essentially phytoplankton and zooplankton) to the
78 biological pump has been well explored for decades (6), the role of large vertebrates (fish and
79 mammals) on ocean biogeochemistry and their ability to sequester carbon has been garnering
80 increasing research attention (7–9). Indeed, some of these species, such as whales, are the largest of
81 all time, thus storing vast amounts of carbon throughout their lifetime which can be exported in the
82 deep ocean after their natural death (10). When reaching the seafloor, whales' carcasses can be

83 consumed by the abyssal fauna and sustain local food web or be buried in the sediments, being
84 trapped for centuries to millennia (11,12) (Figure 1). Therefore, whales generate carbon
85 sequestration i.e., long-term (≥ 100 years) carbon removal from the atmosphere.

86 Yet, whale populations have been dramatically reduced by historical whaling. The majority of this
87 defaunation occurred in the 20th century with some populations reduced by >99%, like the southern
88 right (*Eubalaena australis*) and Antarctic blue whales (*Balaenoptera musculus intermedia*) (13). Since
89 1986, they have been protected from commercial whaling by an international moratorium of the
90 International Whaling Commission (IWC). However, their recovery is now imperilled by climate
91 change via the reduction of prey abundance, increased extreme climate events (El Niños and
92 heatwaves) and disease spread (14–16). While the dynamics of these populations have already been
93 modelled (14,17), the influence of whaling and then of protection on the carbon sequestration
94 mediated by these marine mammals remains poorly understood and unquantified. Thus, the long-
95 term dynamics of whale mediated carbon sequestration in the southern hemisphere need to be
96 assessed accounting for both past whaling and various future climate scenarios. Here, we quantified
97 the role of whales in carbon sequestration through carcasses sinking using historical and forecasted
98 whale abundance estimates under two climate scenarios.

99

100 **Materials and Methods**

101 **Modelling of whale population dynamics**

102 We used population dynamics for five southern baleen whales that have been recently modelled
103 (14,17) as inputs for our carbon sequestration assessment. This is a Southern Hemisphere spatial
104 ‘Model of Intermediate Complexity for Ecosystem Assessments’ (MICE) that estimates whale
105 population sizes from 1890 to 2100. Whale abundances were estimated based on both the dynamics
106 of their prey (Antarctic krill *Euphausia superba* and copepods; bottom-up process) and catches
107 (whaling; top-down pressure). To account for the effects of climate change, we used two MICE model
108 outputs. In the first version, whale population dynamics were not coupled to changing climate
109 conditions which were assumed to remain constant from 1890 to 2100. The second model integrates
110 the impacts of climate change according to the RCP 8.5 ("business as usual") scenario, on krill and
111 copepod prey availability. See supplementary materials for more information on the population
112 model assumptions and outputs.

113

114 **The age-structure of the population**

115 As carbon sequestration depends on whales’ body mass, we derived the age structure of each
116 species population from the outputs of the MICE model. The age structure of the population in a
117 given year, i.e., the number of individuals in a given age class, was constructed using demographic

118 parameters for each species derived from the MICE models (Supplementary Table 1). Whale
 119 population abundances provided by the MICE models correspond to mature females only. To obtain
 120 the total number, the number of males (E_{male}) was estimated from the number of females (E_{female}) and
 121 the sex ratio (q):

$$123 \quad E_{tot} = E_{female} + E_{male} \quad ; \quad E_{female} = q \cdot E_{tot} \quad ; \quad E_{male} = (1 - q) \cdot E_{tot} \quad \Rightarrow \quad E_{male} = \frac{(1-q)}{q} \cdot E_{female} \quad (1)$$

127 For each sex, the number of individuals (N) in each age class (a) between birth and maximum age (z)
 128 was then calculated from the number (E) of adult individuals between the age of maturity (T) and
 129 maximum age (z) and the survival rate (S or S_{juv}). A distinction was made between the survival rate of
 130 individuals under one year old (S_{juv}) and that of individuals over one-year old (S). These rates were
 131 species-specific (Supplementary Table 1), considered constant and identical for males and females.
 132 The number of individuals of a given year class (individuals aged a) is thus written as a function of the
 133 number of individuals aged T :

$$133 \quad \forall a \in]0, z] \quad N_{a+1} = S \cdot N_a \quad \Rightarrow \quad N_a = S^{a-T} \cdot N_T \quad ; \quad \text{For } a = 0, \quad N_0 = S_{juv}^{-1} \cdot S^{1-T} \cdot N_T \quad (2)$$

135 The number of individuals in T years can be found with the parameters of the model:

$$136 \quad \sum_{a=T}^z N_a = E \quad \Rightarrow \quad N_T \cdot \sum_{a=T}^z S^{a-T} = E \quad \Rightarrow \quad N_T = \frac{E}{\sum_{a=T}^z S^{a-T}} \quad (3)$$

138 Thus, the age structure of the population can be written as a function of N_T :

$$139 \quad N_0 = S_{juv}^{-1} \cdot S^{1-T} \cdot N_T \quad ; \quad N_1 = S^{1-T} \cdot N_T \quad \dots \quad N_{T-1} = S^{-1} \cdot N_T \quad ; \quad N_T \quad ; \quad N_{T+1} = S \cdot N_T \quad \dots \quad N_z = S^{z-T} \cdot N_T \quad (4)$$

141 **The whale mortality and biomass**

142 We applied this age structure every year from 1890 to 2100 in order to calculate the number of dying
 143 individuals and their biomass within each age class. We assumed that age structure did not vary over
 144 time. Indeed, the body mass of individuals is almost constant in adulthood so we considered that no
 145 adult year class is more impacted by whaling than another. Among juveniles, very few catches have
 146 been reported for the whale species of this study (18).

147 First, in order to calculate the number of individuals dying naturally each year, the natural mortality
 148 rate ($1-S$ or $1-S_{juv}$) was applied to each age class (Supplementary Table 1).

149 Secondly, to obtain the biomass of an age class, the number of individuals in this class was multiplied
 150 by the corresponding individual body mass. The biomass of individuals at each age follows the Von

151 Bertalanffy equation, whose parameters, depend on both species and sex (10) (Supplementary Table
152 1). Let a the age, m_{inf} the maximum size of individuals, k the growth rate and a_0 the theoretical age at
153 which the mass is zero, the mass m of an individual aged a is:

$$154 \quad m(a) = m_{inf}(1 - e^{-k(a-a_0)}) \quad (5)$$

155 Then, the total population biomass (B_{tot}) was calculated from the biomass of each age class (B_a) as
156 follows:

$$157 \quad B_{tot} = \sum_{a=0}^z B_a \quad \text{with } B_a = m_{female}(a) \cdot N_{female,a} + m_{male}(a) \cdot N_{male,a} \quad (6)$$

158
159 Finally, to assess the amount of carbon sequestered by sinking whales' carcasses, the biomass was
160 converted into carbon mass. A previous study assumed a total body carbon content for dolphins of
161 25% (wet weight) (19) based on estimates on humans (20). A lower estimation of 15% (wet weight)
162 was found assuming 70% of water content and 50% of carbon in the dry weight (21). We used these
163 15%, 25% and 20% as lower, upper and mean estimate of the carbon content in the whale biomass,
164 respectively. We assumed that the carbon content is identical for all individuals without distinction of
165 species, sex or age.

166 **Carbon sequestration**

167 To estimate the amount of carbon sequestered via whale carcasses sinking into the deep ocean (i.e.,
168 deadfall carbon), we estimated the proportion of carcasses that reaches the deep sea. Indeed, the
169 fate of the carcasses depends on several factors. We assume that most adult individuals dies of
170 senescence or disease since attacks by predators such as killer whales (*Orcinus orca*) are thought to
171 be rarely lethal, especially on adults (22,23). However, carcasses do not sink in their entirety to the
172 ocean floor because they are partly consumed by scavengers like sharks (24) or killer whales (25) or
173 degraded by microorganisms (26). We used a conservative estimate of 50% (27) for all species except
174 for southern right whales, for which we considered that only 10% of carcass biomass reaches the
175 deep sea because of their high proportion of blubber making them float after death (10). We
176 considered that whales' dead tissues reaching the seafloor before degradation (remineralisation) are
177 sequestered (5).

178

179

180

181 **Results**

182 **Carbon sequestration prior to commercial whaling**

183 We first investigated the ability of the five baleen whale species to sequester carbon when they were
184 at their pre-exploitation abundance. Dead whales represented each year a biomass of almost 4

185 million tonnes. The sinking of their carcasses generated a flux of 4.0×10^5 (range: $3.0 \times 10^5 - 5.0 \times 10^5$)
186 tonnes of carbon per year (tC.yr^{-1}) towards the deep sea (Figure 2). However, all species did not
187 contribute equally to this total carbon flux. Fin and blue whales contributed to 48% and 34%,
188 respectively (Figure 2). The other three species had a marginal contribution, particularly the southern
189 right whales, which accounted for only 0.7% of the total carbon flux.

190

191 **Carbon sequestration dynamics from 1890 to 2100**

192 We then predicted carbon sequestration dynamics from 1890 to 2100 under two climate change
193 scenarios, both accounting for historical whaling. A stable phase from 1890 to 1912 was followed by
194 a sharp drop in the amount of carbon sequestered over the exploitation period (Figure 3a and 3b). All
195 species experienced a severe population decline, particularly the main sequestration contributors, fin
196 and blue whales, which were reduced to approximately 3% and 0.5% of their pre-exploitation
197 abundance, respectively (Figure 3c and 3d). As a result, carbon sequestration dropped to a minimum
198 of $0.6 \times 10^5 \text{ tC.yr}^{-1}$ (range: 0.4×10^5 and $0.7 \times 10^5 \text{ tC.yr}^{-1}$) in 1972, so only 15% of the pre-exploitation
199 level.

200 In the model without climate change, carbon sequestration would reach $3.2 \times 10^5 \text{ tC.yr}^{-1}$ (range:
201 2.4×10^5 and $4.0 \times 10^5 \text{ tC.yr}^{-1}$) in 2100, so 80% of the sequestration potential before the whaling period.

202 This recovery is mainly due to the predicted increase of Antarctic minke whales and the recovery,
203 albeit slower, of all other species (Figure S3). In the model including the effects of climate change,
204 only the Antarctic minke whale would reach their pre-exploitation population size and their
205 sequestration potential before the end of the 21st century (Figure S3). Under this scenario, the whale
206 mediated carbon sequestration via carcasses sinking would reach $1.7 \times 10^5 \text{ tC.yr}^{-1}$ (range: $1.3 \times 10^5 -$
207 $2.1 \times 10^5 \text{ tC.yr}^{-1}$) in 2100, so less than half of the pre-exploitation level, with Antarctic minke whales
208 accounting for 47% of the total flux, against 5.6% before whaling. In both climate scenarios, fin
209 whales were the major contributors until 1961. While large whales (mainly fin whales and blue
210 whales) recover in the scenario without climate change and overcome the contribution of minke
211 whales, the latter remain the main contributor until the end of the century in the scenario with
212 climate change.

213 Finally, we showed that harmful consequences of whaling persist for many years after its end. By
214 dramatically reducing population levels of the largest species, over-exploitation has created a carbon
215 sequestration deficit. It represents the amount of carbon that has not been sequestered because of
216 whaling compared to what would have been sequestered with whales' populations at their pre-
217 exploitation levels. We calculated that from 1890 to 2100, the carbon sequestration deficit caused by

218 whaling is on average 41.9×10^6 tC and 45.2×10^6 tC without and with climate change respectively
219 (Figure 4a and 4b).

220

221 **Discussion**

222 **The role of whales in the carbon cycle and carbon sequestration**

223 Although our estimates are accompanied by a wide range of uncertainty, we showed that whales – as
224 massive and fast-sinking organisms - efficiently sequester carbon after natural death. Through this
225 process, they trap carbon away from the atmosphere for centuries to millennia, helping to mitigate
226 climate change. However, the annual sequestration capacity of whales in the southern hemisphere is
227 one or two orders of magnitude smaller than sequestration carbon flux estimated on Blue Carbon
228 Ecosystems (BCE) like mangroves, tidal marshes or seagrasses, sequestering annually $31.2 - 34.4 \times 10^6$
229 tC.yr^{-1} , $4.8 - 87.2 \times 10^6 \text{tC.yr}^{-1}$, and $41.4 - 82.8 \times 10^6 \text{tC.yr}^{-1}$ on a global scale respectively (28).

230 Nevertheless, whales could play other important roles in the carbon cycle that are less explored.
231 First, thanks to their longevity and high weight, they store large amounts of organic carbon in their
232 body-mass throughout their lifetime, that can be up to one century for some species like blue whales
233 (Figure S1). Secondly, whales have been shown to be efficiently recycle nutrients and boost primary
234 production (29–32),. Indeed, the Southern Ocean is largely considered to be a High Nutrient Low
235 Chlorophyll (HNLC) zone, i.e. a zone where macronutrients (nitrogen and phosphorus) concentrations
236 are high but primary productivity is low (33). Phytoplankton growth is limited by the availability of
237 trace elements (Fe, Cu, Zn, Co, Cd), especially iron (33) as confirmed by many short-term iron-
238 addition experiments (34,35). In that context, southern whales play a critical functional role since
239 they feed mostly on krill which is an iron accumulator (31,36). Thus, they can alleviate the growth
240 limitation of phytoplankton through the supply of iron-rich faeces. Indeed, whales' faeces are highly
241 concentrated in iron (whales' faeces iron concentration was estimated by $145.9 \pm 133.7 \text{ mg.kg}^{-1}$,
242 being approximately ten million times that Antarctic seawater (31)). Plus, they are likely highly
243 bioavailable as they are liquid and buoyant, remaining in the euphotic zone where whales defecate,
244 and iron is also excreted with other nutrients, preventing phytoplankton growth from co-limitations
245 and successive limitations. On the other hand, although krill can also recycle iron, the pool of iron in
246 krill is probably poorly available for phytoplankton, as krill release most of its iron in dense and fast-
247 sinking pellets (36). Therefore, whales play this unique role of fertilizer in the Southern Ocean. But
248 even though they help maintain high levels of primary productivity, whales do not enrich i.e., bring
249 new iron in the system themselves. Thus, they mainly generate 'regenerated' primary production, as
250 opposed to 'new' primary production generated by the addition of new nutrients in the system.

251 On the other hand, krill is known to feed a lot in the benthos (37,38), bringing new iron in the system.
252 Thus, whales and krill could maintain highly productive systems through these processes, potentially
253 boosting the biological carbon pump and sequestering carbon.

254 As only the new primary production leads to additional carbon fixation by the phytoplankton and
255 carbon sequestration in the deep ocean (through particles flux toward the depth), it remains difficult
256 to quantify the fraction of new and regenerated primary production and subsequent carbon
257 sequestration mediated by whales. Nevertheless, studies showed that krill was more abundant in the
258 Southern Ocean before whales defaunation (39), indicating that whales and krill were highly
259 mutualistic. Since krill can export carbon at depth very efficiently through various processes (fast
260 sinking of faecal pellets, sinking of exuviae (40–42)), we suggest that the pre-whaling ocean
261 sequestered much more carbon than a megafauna-depauperated ocean. The role of whales in the
262 carbon cycle, mainly through their indirect role of nutrient cycling represents an avenue for future
263 research, especially regarding climate change mitigation and potential identification of new Natural
264 Climate Solutions (NCS). In order to have an exhaustive overview of the impact of whales on the
265 carbon cycle and their potential as an NCS, we need comprehensive studies that compare the carbon
266 cycling of the entire food web in the presence or absence of whales.

267

268 **Climate change and whaling footprint on whale mediated carbon sequestration**

269 Although we showed that whales have the ability to sequester non negligible quantities of carbon,
270 their sequestration capacities have been largely impaired by commercial whaling, with consequences
271 extending well beyond the exploitation period. Indeed, due to their long-life cycles, the recovery of
272 whale populations after over-exploitation is a very slow process. Because of over-exploitation, their
273 carbon sequestration capacity is currently limited in 2022 to $1.2 \times 10^5 \text{ tC.yr}^{-1}$ ($0.9 \times 10^5 - 1.4 \times 10^5 \text{ tC.yr}^{-1}$),
274 i.e. 30% of the pre-exploitation level. This has created a sequestration deficit reaching between 41.9
275 $\times 10^6 \text{ tC}$ and $45.2 \times 10^6 \text{ tC}$ on average in 2100, depending on the climate scenario. In addition to past
276 whaling, the sequestration capacity of whales is now reduced by climate change. Indeed, the
277 recovery of whale populations and of the carbon pump may be delayed and weakened by climate
278 change since carbon sequestration barely reaches half of its historical value in the model with climate
279 change. This is primarily explained by changes in the abundance and distribution of krill due to
280 changing primary productivity patterns in the Southern Ocean (14). Furthermore, the distribution of
281 krill is expected to contract southward due to increasing temperature and reduced sea-ice extent
282 (43). This is particularly deleterious for whale species predominantly feeding in mid-latitudes areas
283 (humpback whales, fin whales and southern right whales). Minke whales and blue whales could
284 benefit from the ice-extent reduction in the Southern Ocean because of their ice-dependency,
285 assuming they can shift their distribution southwards to follow the krill. However, the higher

286 abundance of minke whales, which have been less exploited, may reduce the prey availability for
287 other species. Consequently, the MICE model predicts slower recovery for blue whales, decline for
288 humpback, fin and southern right whales, but rapid population increase for Antarctic minke whales
289 during the 21st century in the scenario with climate change (14). As a result, despite an "explosion" of
290 minke whale populations, the total carbon flux would not return to its pre-exploitation level due to
291 the negative impact of climate change on other species. A negative feedback loop between climate
292 change and whale populations could therefore occur in the southern hemisphere.

293 On the other hand, thanks to their rapid increase, Antarctic minke whales can maintain, at least
294 partially, the carbon sink and limit the carbon sequestration deficit due to over-exploitation. Their
295 increase throughout the 21st century is a key resilience factor since they allow a faster recovery of
296 carbon flux towards its historical value. The asynchrony between the different population dynamics
297 enable the overall carbon sequestration of the whale community to be more resilient, thus exhibiting
298 a positive relationship between diversity and stability under the portfolio effect (44).

299

300 **Restoration of whales and the associated carbon pump**

301 Even though whales are vulnerable to climate change, primarily through the decrease in krill prey
302 density and southward contraction of geographic distributions (43), their restoration could be
303 promoted by mitigating current threats. In addition to the moratorium established in 1986 by the
304 International Whaling Commission (IWC) that protects whales from commercial exploitation,
305 restriction on maritime routes, fishing zones and authorised speed of boats can reduce the mortality
306 and low reproduction rates associated with ship strikes and noise generated by boats. Promoting
307 sustainable exploitation of krill, the whales' primary prey in the Southern Ocean, would also preserve
308 whale populations and their associated carbon sequestration. Thus, the protection of both krill and
309 whales, in particular under the legislation of the CCAMLR, would help maintain whales' population
310 and associated carbon sequestration.

311 Although our study does not account for the spatial distribution of whales, and thus, cannot map the
312 associated carbon flux toward the depth, conservation strategies should be determined regarding
313 their feeding, breeding grounds and migratory routes. Coupling tracking studies and assessment of
314 the whales mediated services like carbon sequestration could help identify areas of ecological
315 importance and inform policies in the design of protected areas (45). This would be especially
316 relevant for fin whales and blue whales that were the main contributors to the carbon sequestration
317 in the past, and that are currently categorised as 'vulnerable' and 'threatened' by the IUCN (see
318 Figure S1).

319

320 **Limits and uncertainties**

321 While our estimations are subject to several uncertainties, we adopted a conservative approach.
322 First, our study is restricted to five baleen species in the southern hemisphere, whereas there are
323 fifteen species of baleen whales globally. We considered here only baleen whales that were included
324 in the MICE models (14,17), i.e. species commercially exploited in Antarctic waters, in most cases
325 feeding predominantly on Antarctic krill and for which enough survey data were available. Therefore,
326 our study may significantly underestimate the importance of carbon sequestration mediated by
327 whales at global scale by excluding other southern species (Bryde's whale, Pygmy right whale and
328 Dwarf Antarctic minke whale), northern species (bowhead whale, gray whale, omuras whale,
329 northern right whale) and toothed whales.

330 We used the most updated population dynamics and converted the number of individuals of each
331 species accounting for sex and age variability in the body-mass. However, we ignored seasonal
332 variations in body mass. Indeed, these migratory species experience significant weight variations
333 during the year (46): they may gain several tonnes during the summer and be considerably thinner at
334 the end of the breeding season. The amount of carbon sequestered therefore depends on the
335 seasonality of natural mortality, which is not taken into account in our study.

336 Additionally, a main limitation in our study is the lack of empirical data on several processes. Indeed,
337 carbon content in whale's tissues and the proportion of biomass reaching the deep ocean have not
338 been experimentally measured on large whales. First, we used the same carbon content in whale's
339 tissues for each species, ignoring the inter-specific variability. Secondly, it was assumed that the
340 biomass-carbon conversion does not change with carcass degradation. However, not all tissues have
341 the same carbon concentration (47) and some (fat tissue, muscle) may be consumed primarily by
342 scavengers (48). In order to gain precision, it seems essential to determine the carbon level in the
343 different types of tissue (bone, muscle, blubber, viscera) for each species. Finally, the proportion of
344 biomass reaching the deep ocean before being consumed or remineralised is uncertain and probably
345 highly variable (depending on the presence of scavengers or currents, for example). The estimates
346 we used are conservative, thus we provide a lower-bound of the potential whale-mediated carbon
347 sequestration. Data collection on these crucial processes is therefore needed to refine our estimates.

348

349 **Conclusion**

350 We showed that despite efficient carbon sequestration capacities at their pre-exploitation levels,
351 whale mediated carbon sequestration has dramatically dropped because of commercial whaling and
352 will be far from complete recovery by the end of the century as a result of climate change. Therefore,
353 our results call for protection and restauration of whale populations as a potential Blue Carbon
354 Ecosystem (BCE) providing opportunities for climate change mitigation (49–51). Indeed, further
355 research should refine the quantification of their carbon sequestration potential and explore other

356 sequestration pathways, especially those mediated by bottom-up processes like nutrient cycling.
357 Further identifying and quantifying the carbon sequestration capacities of marine vertebrates in
358 general would provide additional evidence to support the protection of 30% of the oceans by 2030, a
359 new target proposed to the United Nations (52). In the case of whales, protection should be designed
360 as a meaningful assemblage including feeding and breeding grounds and migratory routes (45). In
361 this way, restoring marine vertebrates could contribute to achieve our climate objectives while
362 generating other services beneficial to the functioning of the biosphere and the well-being of human
363 societies (53,54).

364

365 **References**

- 366 1. Friedlingstein P, Jones MW, O’Sullivan M, Andrew RM, Bakker DCE, Hauck J, et al.
367 Global Carbon Budget 2021. *Earth System Science Data Discussions*. 2021 Nov 4;1–191.
- 368 2. Magnan AK, Pörtner HO, Duvat VKE, Garschagen M, Guinder VA, Zommers Z, et al.
369 Estimating the global risk of anthropogenic climate change. *Nat Clim Chang*. 2021
370 Oct;11(10):879–85.
- 371 3. UNFCCC. United Nations Framework Convention on Climate Change, COP 21 Climate
372 Agreement (UNFCCC, Paris). 2015.
- 373 4. Bar-On YM, Milo R. The Biomass Composition of the Oceans: A Blueprint of Our Blue
374 Planet. *Cell*. 2019 Dec;179(7):1451–4.
- 375 5. Siegel DA, DeVries T, Doney S, Bell T. Assessing the sequestration time scales of some
376 ocean-based carbon dioxide reduction strategies. *Environ Res Lett* [Internet]. 2021 Jun
377 16 [cited 2021 Jun 17]; Available from:
378 <https://iopscience.iop.org/article/10.1088/1748-9326/ac0be0>
- 379 6. Boyd PW, Claustre H, Levy M, Siegel DA, Weber T. Multi-faceted particle pumps drive
380 carbon sequestration in the ocean. *Nature*. 2019 Apr;568(7752):327–35.
- 381 7. Bianchi D, Carozza DA, Galbraith ED, Guiet J, DeVries T. Estimating global biomass and
382 biogeochemical cycling of marine fish with and without fishing. *Science Advances*. 2021
383 Oct;7(41):eabd7554.
- 384 8. Saba GK, Burd AB, Dunne JP, Hernández-León S, Martin AH, Rose KA, et al. Toward a
385 better understanding of fish-based contribution to ocean carbon flux. *Limnology and
386 Oceanography*. 2021;66(5):1639–64.
- 387 9. Mariani G, Cheung WWL, Lyet A, Sala E, Mayorga J, Velez L, et al. Let more big fish sink:
388 Fisheries prevent blue carbon sequestration—half in unprofitable areas. *Science
389 Advances*. 2020 Oct 1;6(44):eabb4848.

- 390 10. Pershing AJ, Christensen LB, Record NR, Sherwood GD, Stetson PB. The Impact of
391 Whaling on the Ocean Carbon Cycle: Why Bigger Was Better. Humphries S, editor. PLoS
392 ONE. 2010 Aug 26;5(8):e12444.
- 393 11. Jiao N, Herndl GJ, Hansell DA, Benner R, Kattner G, Wilhelm SW, et al. Microbial
394 production of recalcitrant dissolved organic matter: Long-term carbon storage in the
395 global ocean. *Nature reviews Microbiology*. 2010 Aug;8(8):593–9.
- 396 12. Bax N, Sands CJ, Gogarty B, Downey RV, Moreau CVE, Moreno B, et al. Perspective:
397 Increasing blue carbon around Antarctica is an ecosystem service of considerable
398 societal and economic value worth protecting. *Global Change Biology*. 2021;27(1):5–12.
- 399 13. Christensen LB. Marine mammal populations: Reconstructing historical abundances at
400 the global scale. Fisheries Centre. University of British Columbia. Vol. 14. Vancouver;
401 2006. 161 p.
- 402 14. Tulloch VJD, Plagányi ÉE, Brown C, Richardson AJ, Matear R. Future recovery of baleen
403 whales is imperiled by climate change. *Glob Change Biol*. 2019 Apr;25(4):1263–81.
- 404 15. Albouy C, Delattre V, Donati G, Frölicher TL, Albouy-Boyer S, Rufino M, et al. Global
405 vulnerability of marine mammals to global warming. *Sci Rep*. 2020 Dec;10(1):548–60.
- 406 16. Sanderson CE, Alexander KA. Uncharted waters: Climate change likely to intensify
407 infectious disease outbreaks causing mass mortality events in marine mammals. *Glob
408 Change Biol*. 2020 Jun 18;00(15163):1–18.
- 409 17. Tulloch VJD, Plagányi ÉE, Matear R, Brown CJ, Richardson AJ. Ecosystem modelling to
410 quantify the impact of historical whaling on Southern Hemisphere baleen whales. *Fish
411 Fish*. 2018 Jan;19(1):117–37.
- 412 18. Allison C. IWC individual and summary catch databases. 135 Station Road, Histon,
413 Cambridge CB30QQ UK: International Whaling Commission; 2013. Report No.: 5.5.
- 414 19. Martin SL, Ballance LT, Groves T. An Ecosystem Services Perspective for the Oceanic
415 Eastern Tropical Pacific: Commercial Fisheries, Carbon Storage, Recreational Fishing,
416 and Biodiversity. *Front Mar Sci* [Internet]. 2016 Apr 27 [cited 2020 Jun 26];3. Available
417 from: <http://journal.frontiersin.org/Article/10.3389/fmars.2016.00050/abstract>
- 418 20. Wang Z, Pierson RN. Total body carbon and oxygen masses: evaluation of dual-energy
419 x-ray absorptiometry estimation by in vivo neutron activation analysis. *Phys Med Biol*.
420 2010 Sep;55(19):5953–63.
- 421 21. Bar-On YM, Phillips R, Milo R. The biomass distribution on Earth. *Proc Natl Acad Sci
422 USA*. 2018 Jun 19;115(25):6506–11.
- 423 22. Jefferson TA, Stacey PJ, Baird RW. A review of Killer Whale interactions with other
424 marine mammals: predation to co-existence. *Mamm Rev*. 1991 Dec;21(4):151–80.
- 425 23. Ford JKB, Reeves RR. Fight or flight: antipredator strategies of baleen whales. *Mammal
426 Review*. 2008 Jan;38(1):50–86.

- 427 24. Lea JSE, Daly R, Leon C, Daly CAK. Life after death: behaviour of multiple shark species
428 scavenging a whale carcass. *Mar Freshw Res.* 2018;70:302–6.
- 429 25. Whitehead H, Reeves R. Killer whales and whaling: the scavenging hypothesis. *Biol Lett.*
430 2005 Dec 22;1(4):415–8.
- 431 26. Treude T, Smith CR, Wenzhöfer F, Carney E, Bernardino AF, Hannides AK, et al.
432 Biogeochemistry of a deep-sea whale fall: sulfate reduction, sulfide efflux and
433 methanogenesis. *Marine Ecology Progress Series.* 2009 Apr 30;382:1–21.
- 434 27. Smith CR, Baco AR. Ecology of whale falls at the deep-sea floor. *Oceanogr Mar Biol.*
435 2003;44:311–54.
- 436 28. Howard J, Sutton-Grier A, Herr D, Kleypas J, Landis E, Mcleod E, et al. Clarifying the role
437 of coastal and marine systems in climate mitigation. *Front Ecol Environ.* 2017
438 Feb;15(1):42–50.
- 439 29. Lavery TJ, Roudnew B, Gill P, Seymour J, Seuront L, Johnson G, et al. Iron defecation by
440 sperm whales stimulates carbon export in the Southern Ocean. *Proc R Soc B.* 2010 Nov
441 22;277(1699):3527–31.
- 442 30. Maldonado MT, Surma S, Pakhomov EA. Southern Ocean biological iron cycling in the
443 pre-whaling and present ecosystems. *Phil Trans R Soc A.* 2016 Nov
444 28;374(2081):20150292.
- 445 31. Nicol S, Bowie A, Jarman S, Lannuzel D, Meiners KM, Van Der Merwe P. Southern Ocean
446 iron fertilization by baleen whales and Antarctic krill: Whales, Antarctic krill and iron
447 fertilization. *Fish Fish.* 2010 Mar 30;11(2):203–9.
- 448 32. Ratnarajah L, Bowie AR, Lannuzel D, Meiners KM, Nicol S. The Biogeochemical Role of
449 Baleen Whales and Krill in Southern Ocean Nutrient Cycling. Ban S, editor. *PLoS ONE.*
450 2014 Dec 3;9(12):e114067.
- 451 33. Moore CM, Mills MM, Arrigo KR, Berman-Frank I, Bopp L, Boyd PW, et al. Processes and
452 patterns of oceanic nutrient limitation. *Nature Geosci.* 2013 Sep;6(9):701–10.
- 453 34. De Baar HJW, Boyd PW, Coale KH, Landry MR, Tsuda A, Assmy P, et al. Synthesis of iron
454 fertilization experiments: From the Iron Age in the Age of Enlightenment. *Journal of*
455 *Geophysical Research: Oceans* [Internet]. 2005 [cited 2020 Dec 3];110(C9). Available
456 from: <https://agupubs.onlinelibrary.wiley.com/doi/abs/10.1029/2004JC002601>
- 457 35. Boyd PW, Watson AJ, Law CS, Abraham ER, Trull T, Murdoch R, et al. A mesoscale
458 phytoplankton bloom in the polar Southern Ocean stimulated by iron fertilization.
459 *Nature.* 2000 Oct;407(6805):695–702.
- 460 36. Cavan EL, Belcher A, Atkinson A, Hill SL, Kawaguchi S, McCormack S, et al. The
461 importance of Antarctic krill in biogeochemical cycles. *Nat Commun.* 2019
462 Dec;10(1):4742.

- 463 37. Schmidt K, Atkinson A, Steigenberger S, Fielding S, Lindsay MCM, Pond DW, et al.
464 Seabed foraging by Antarctic krill: Implications for stock assessment, benthic-pelagic
465 coupling, and the vertical transfer of iron. *Limnology and Oceanography*.
466 2011;56(4):1411–28.
- 467 38. Clarke A, Tyler PA. Adult Antarctic Krill Feeding at Abyssal Depths. *Current Biology*. 2008
468 Feb 26;18(4):282–5.
- 469 39. Atkinson A, Siegel V, Pakhomov E, Rothery P. Long-term decline in krill stock and
470 increase in salps within the Southern Ocean. *Nature*. 2004 Nov;432(7013):100–3.
- 471 40. Pauli NC, Flintrop CM, Konrad C, Pakhomov EA, Swoboda S, Koch F, et al. Krill and salp
472 faecal pellets contribute equally to the carbon flux at the Antarctic Peninsula. *Nat*
473 *Commun*. 2021 Dec 9;12(1):7168.
- 474 41. Manno C, Fielding S, Stowasser G, Murphy EJ, Thorpe SE, Tarling GA. Continuous
475 moulting by Antarctic krill drives major pulses of carbon export in the north Scotia Sea,
476 Southern Ocean. *Nature Communications*. 2020 Nov 27;11(1):6051.
- 477 42. Belcher A, Henson SA, Manno C, Hill SL, Atkinson A, Thorpe SE, et al. Krill faecal pellets
478 drive hidden pulses of particulate organic carbon in the marginal ice zone. *Nat*
479 *Commun*. 2019 Feb 21;10(1):889.
- 480 43. Atkinson A, Hill SL, Pakhomov EA, Siegel V, Reiss CS, Loeb VJ, et al. Krill (*Euphausia*
481 *superba*) distribution contracts southward during rapid regional warming. *Nature Clim*
482 *Change*. 2019 Feb;9(2):142–7.
- 483 44. Craven D, Eisenhauer N, Pearse WD, Hautier Y, Isbell F, Roscher C, et al. Multiple facets
484 of biodiversity drive the diversity–stability relationship. *Nature Ecology & Evolution*.
485 2018 Oct;2(10):1579–87.
- 486 45. Hindell MA, Reisinger RR, Ropert-Coudert Y, Hückstädt LA, Trathan PN, Bornemann H,
487 et al. Tracking of marine predators to protect Southern Ocean ecosystems. *Nature*.
488 2020 Apr;580(7801):87–92.
- 489 46. Víkingsson GA. Body condition of fin whales during summer off Iceland. In: Blix AS,
490 Walløe L, Ulltang Ø, editors. *Whales, seals, fish and man* [Internet]. *Developments in*
491 *Marine Biology*. Amsterdam: Elsevier Science; 1995 [cited 2020 Jun 27]. p. 361–9.
492 Available from: <http://www.sciencedirect.com/science/article/pii/S0163699506800375>
- 493 47. Jelmert A, Oppen-Berntsen DO. Whaling and Deep-Sea Biodiversity. *Conserv Biol*. 1996
494 Apr;10(2):653–4.
- 495 48. Curtis TH, Kelly J, Menard K, Laroche R, Jones R, Klimley A. Observations on the
496 behavior of white sharks scavenging from a whale carcass at Point Reyes, California.
497 *Calif Fish Game*. 2006;92:113–24.
- 498 49. Macreadie PI, Costa MDP, Atwood TB, Friess DA, Kelleway JJ, Kennedy H, et al. Blue
499 carbon as a natural climate solution. *Nat Rev Earth Environ*. 2021 Nov 1;1–14.

500 50. Griscom BW, Adams J, Ellis PW, Houghton RA, Lomax G, Miteva DA, et al. Natural
501 climate solutions. *Proc Natl Acad Sci USA*. 2017 Oct 31;114(44):11645–50.

502 51. Martin AH, Pearson HC, Saba GK, Olsen EM. Integral functions of marine vertebrates in
503 the ocean carbon cycle and climate change mitigation. *One Earth*. 2021 May
504 21;4(5):680–93.

505 52. Visconti P, Butchart SHM, Brooks TM, Langhammer PF, Marnewick D, Vergara S, et al.
506 Protected area targets post-2020. *Science*. 2019 Apr 11;364:239–41.

507 53. Tavares DC, Moura JF, Acevedo-Trejos E, Merico A. Traits Shared by Marine Megafauna
508 and Their Relationships With Ecosystem Functions and Services. *Front Mar Sci*. 2019
509 May 24;6:262–74.

510 54. Riisager-Simonsen C, Rendon O, Galatius A, Olsen MT, Beaumont N. Using ecosystem-
511 services assessments to determine trade-offs in ecosystem-based management of
512 marine mammals. *Conserv Biol* [Internet]. 2020 Apr 14 [cited 2020 Jun 26]; Available
513 from: <http://doi.wiley.com/10.1111/cobi.13512>

514

515

516

517

518

519

520

521

522

523

524

525

526

527

528 **Figure legends**

529

530 Figure 1. Conceptual diagram of the carbon sequestration mediated by baleen whales. (1) After
531 natural death, the carcasses start sinking. (2) They can be partially consumed by scavengers like killer
532 whales and sharks as well as degraded by microorganisms. Once a carcass has reached the seafloor,
533 the organic carbon in tissues can be (3a) consumed and respired at depth by local abyssal fauna (like
534 zoarcidae) and microorganisms. Once respired, the inorganic carbon can be brought back to the
535 surface water and outgassed into the atmosphere on a time scale from centuries to thousands of
536 years depending on the depth and the water circulation (5). Or (3b) it can be buried in the sediments
537 where it can be trapped on longer time scales, up to millennia (12).

538

539

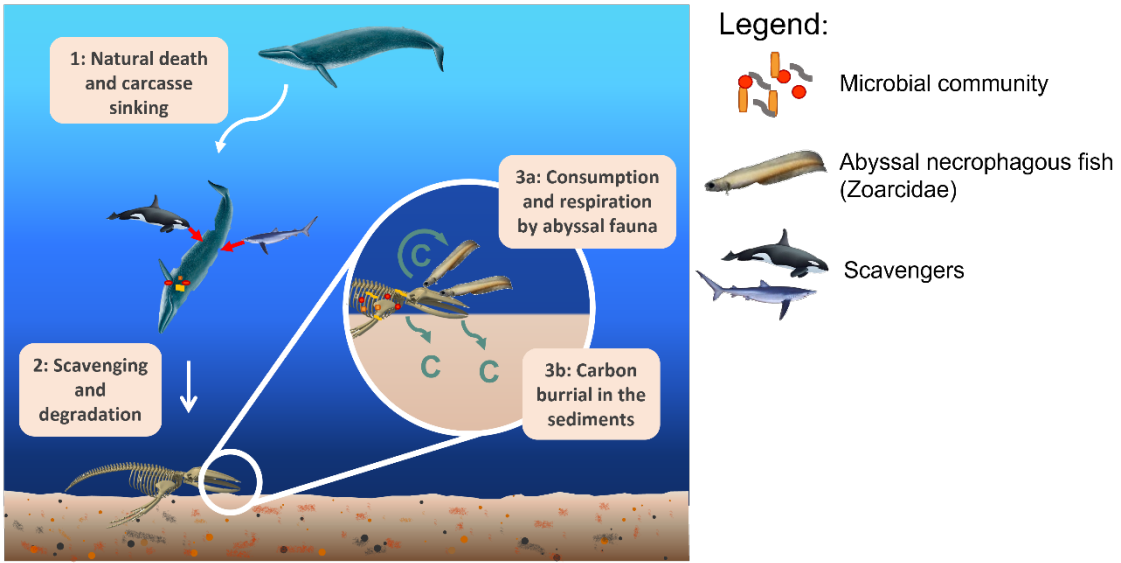
540 Figure 2: Amount of carbon sequestered annually by each whale specie and for all the five species
541 together (total) at their pre-exploitation levels through the sinking of the carcasses. On the top right,
542 the relative contribution of each species. Errors bars represent high and low estimations for carbon
543 sequestration given parameter uncertainties.

544
545
546
547
548
549
550
551
552
553
554
555
556
557
558
559
560
561
562
563
564
565
566
567
568
569
570
571
572
573
574
575
576
577
578
579
580
581

Figure 3: Dynamics of carbon sequestration mediated by the five baleen whale species between 1890 and 2100 without climate change (a and c) and with climate change (b and d). Panels (a) and (b) represent the total sequestration by the five whale species. Panels (c) and (d) represent the sequestration dynamic for each species. Shaded areas represent the high and low estimations of carbon sequestration given parameter uncertainties.

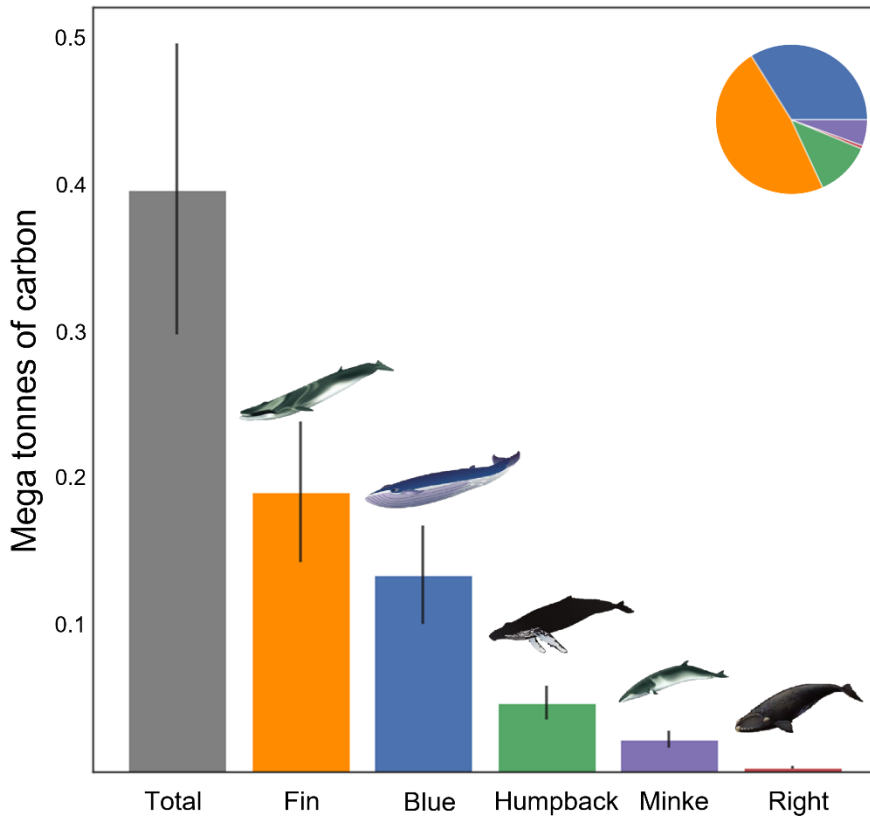
Figure 4: Cumulative carbon sequestration deficit from 1890 to 2100 without climate change (a) and with climate change (b). For each year, the total amount of non-sequestered carbon is compared to that corresponding to the pre-exploitation levels of whale populations. Shaded areas represent the high and low estimations for carbon deficit given parameter uncertainties.

Figures
Figure 1



582
583
584
585

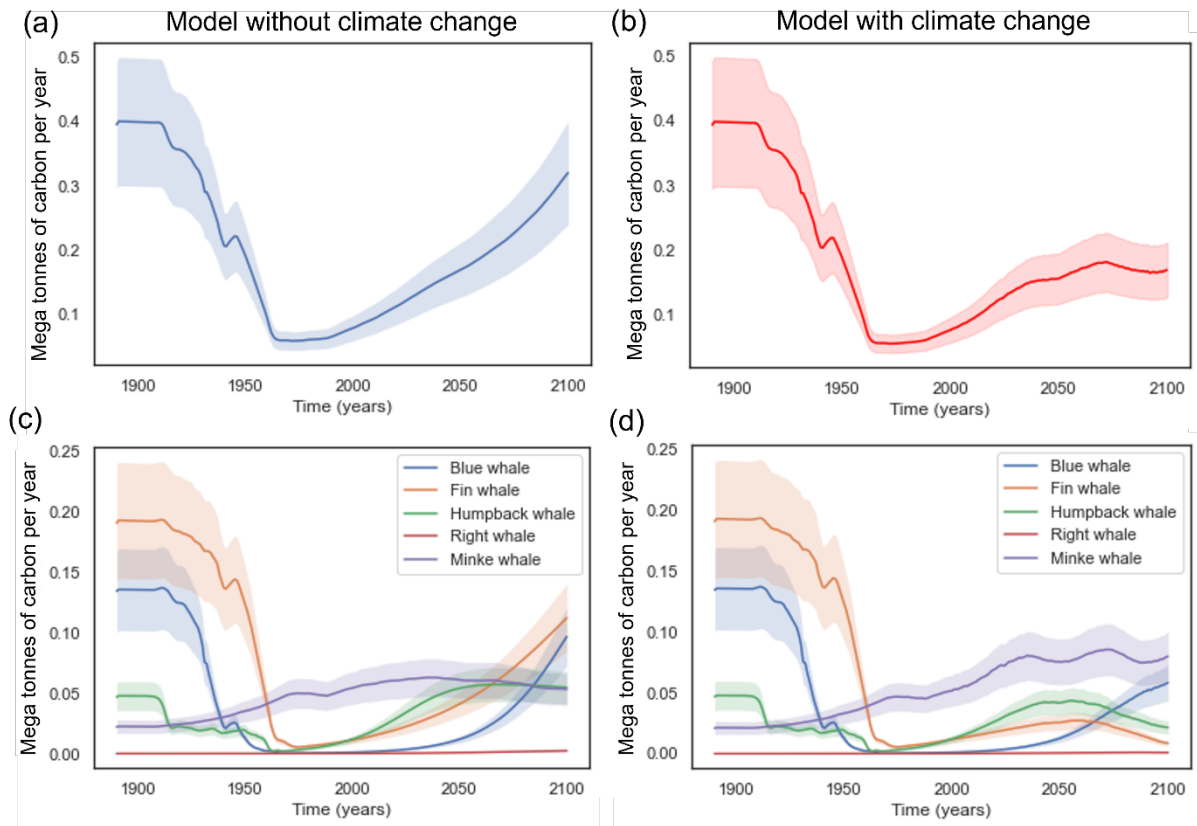
Figure 2



586
587
588
589

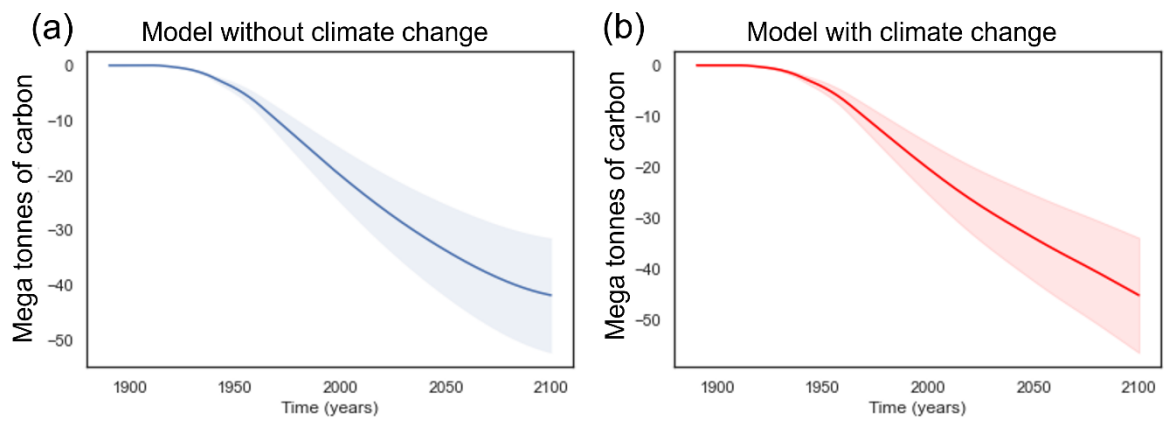
590
591
592
593
594
595
596
597
598

Figure 3



599
600
601
602

Figure 4



603
604
605