



**HAL**  
open science

## The Ordovician System in the Levant region (Middle East) and southern Turkey: review of depositional facies, fauna and stratigraphy

Olaf Elicki, Tim Meischner, Semih Gürsu, Jean-François Ghienne, Ahmad Masri, Khaled Ali Moumani, Huriye Demircan

### ► To cite this version:

Olaf Elicki, Tim Meischner, Semih Gürsu, Jean-François Ghienne, Ahmad Masri, et al.. The Ordovician System in the Levant region (Middle East) and southern Turkey: review of depositional facies, fauna and stratigraphy. The Geological Society, London, Special Publications, 2022, 533 (1), 10.1144/SP533-2022-53 . hal-03854557

**HAL Id: hal-03854557**

**<https://hal.science/hal-03854557v1>**

Submitted on 15 Nov 2022

**HAL** is a multi-disciplinary open access archive for the deposit and dissemination of scientific research documents, whether they are published or not. The documents may come from teaching and research institutions in France or abroad, or from public or private research centers.

L'archive ouverte pluridisciplinaire **HAL**, est destinée au dépôt et à la diffusion de documents scientifiques de niveau recherche, publiés ou non, émanant des établissements d'enseignement et de recherche français ou étrangers, des laboratoires publics ou privés.

# The Ordovician System in the Levant region (Middle East) and southern Turkey: review of depositional facies, fauna and stratigraphy

Olaf Elicki<sup>1\*</sup>, Tim Meischner<sup>1</sup>, Semih Gürsu<sup>2</sup>, Jean-François Ghienne<sup>3</sup>, Ahmad Masri<sup>4</sup>, Khaled Ali Moumani<sup>4</sup>, Huriye Demircan<sup>5</sup>

<sup>1</sup> TU Bergakademie Freiberg, Geological Institute, Freiberg 09599, Germany

<sup>2</sup> Muğla Sıtkı Koçman University, Department of Geological Engineering, Kötekli-Muğla 48000, Turkey

<sup>3</sup> Institut Terre et Environnement de Strasbourg (ITES, UMR 7063), CNRS-Université de Strasbourg, 5 rue R. Descartes, 67000 Strasbourg, France

<sup>4</sup> Ministry of Energy and Mineral Resources, Geological Mapping Division, Amman 11814, Jordan

<sup>5</sup> General Directorate of Mineral Research and Exploration, Department of Geological Research, Ankara 06520, Turkey

ORCID ID: Olaf Elicki, 0000-0001-6624-5025; Jean-François Ghienne, 0000-0002-9448-5285; Semih Gürsu, 0000-0001-5303-7948, Huriye Demircan, 0000-0001-9883-8650

Present address: Olaf Elicki, TU Bergakademie Freiberg, Geological Institute, Bernhard-von-Cotta Street 2, Freiberg 09599, Germany

\*Corresponding author (e-mail: Olaf.Elicki@geo.tu-freiberg.de)

## Abstract

This contribution addresses the current state of knowledge of the mainly siliciclastic Ordovician rocks in Jordan, Syria and southern Turkey including advances in palaeontology, stratigraphy, depositional facies analysis and supra-regional correlation.

The extensive and excellent exposures of the sedimentary succession in southern Jordan represent the regional reference for the Ordovician System in the southern Levant. We discuss the sedimentological and faunal characteristics as well as the stratigraphy and correlation of the succession. For the northern Levant (especially southeastern Turkey) and the western and eastern Taurides, the Ordovician succession and an updated sedimentary architecture is explained and a comprehensive correlation for the region is presented. Increased knowledge on the fossil content from these regions enables correlation across the southern parts of the Arabian Plate to southern Turkey, and with the greater Gondwanan regions, far-field as southwestern Europe and northern Africa. The depositional environments in the southern and northern Levant and southern Turkey encompass non-marine to shallow-marine areas in the lower part of the Ordovician that are followed upsection by shelf deposits of variable proximity up to the glacial episode in the Late Ordovician that is tracable in each of the areas. Characteristic signals in the Ordovician succession are represented by the trans-regional early Darriwilian unconformity and by the base of the Hirnantian glacial-related deposits followed by lower Silurian strata, visible across the entire region. New data from zircon-based provenance analysis clearly implicate the Arabian Shield as the main source of the huge

amount of the clastic detritus within the the Ordovician succession. In the course of the entire Cambrian-Ordovician interval, progressive deeper erosion of the Arabian Shield occurred. Sediment sources from regions farther away indicate long time of exposure and resedimentation, and some long-distant transportation, but their sedimentary influence was only of minor extent. The excellent outcrops mainly in southern Jordan, in southeastern Turkey and in the Taurides represent potential regions for further research.

---

Elicki O., Meischner T., Gürsu S., Ghiene J.-F., Masri A., Moumani K.A., Demircan H. in press. The Ordovician System in the Levant region (Middle East) and southern Turkey: review of depositional facies, fauna and stratigraphy. In: Servais, T., Harper, D.A.T., Lefebvre, B., Percival, I.G. (eds) *A Global Synthesis of the Ordovician System, Part 2. - Geological Society of London Special Publication*, vol. 533.

Accepted 2 September 2022

**DOI: <https://doi.org/10.1144/SP533-2022-53>**

---

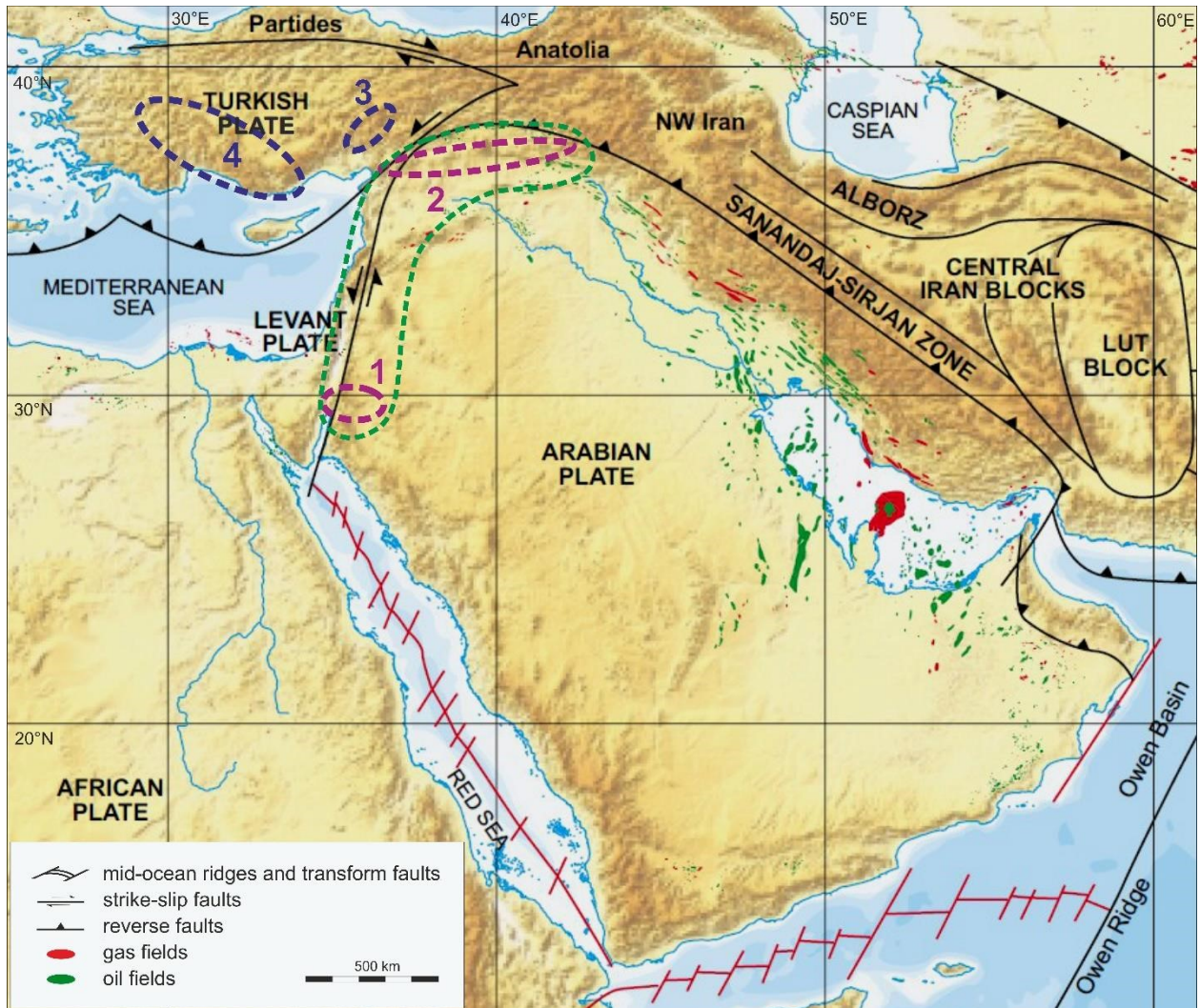
The geographic territory of the Middle East that roughly includes the historic areas of Jordan, Palestine, Lebanon and Syria (respective parts of them) is often referred to as the “Levant”. The area extends from the eastern Mediterranean coast up to western Mesopotamia, and from southern Anatolia north of the Syrian border, to the Red Sea in the South, what is more-or-less synonymous with the western arc of the so-called *Fertile Crescent*. Geologically, the region is represented by parts of the Arabian Plate, the Levant Plate and by the marginal parts of the Anatolian Plate (Turkish Plate) (Fig. 1). Major regional structural elements include the SSW–NNE trending Dead Sea Transform Fault, the Palmyra Fold Belt which extends approximately WSW–ESE throughout central Syria, and the East Anatolian Fault Zone which represents the WSW–ESE oriented northern margin of the Arabian Plate.

In the southernmost part of the Levant region the prominent basement outcrops of the Arabian Shield (which is the eastern belt of the combined Arabian-Nubian Shield) are exposed in southern Jordan and Israel. Surface outcrops of Lower Palaeozoic successions are mostly restricted to the margins of these basement areas and to the shoulders of the Dead Sea Rift depression (Wadi Araba and Dead Sea valley until the northeastern margin of the Dead Sea near Wadi Zeraq Main in Jordan). Strata of this age are also reported, however, from subsurface farther north (see below). Generally, they are excised westwards due to several phases of uplift and denudation during the late Palaeozoic and Mesozoic (Powell, 1989; Weissbrod, 2004). At the surface, Palaeozoic rocks are not again exposed until the northern Levant, an area representing the most northern extension of the Arabian Plate close to the modern Syrian–Turkish border.

Information on the nature of the Ordovician sedimentary pile in the Levant is mainly based on the thick and well-preserved successions at the northern margin of the Arabian Shield in Jordan (related exposures on the Sinai Peninsula are considered by Vecoli and Molyneux in chapter 6 of this volume). Here, the Lower Palaeozoic was reported from the early-mid 20<sup>th</sup> century onward (e.g., Blanckenhorn, 1910; King, 1923; Richter and Richter, 1941; Picard, 1942; Quennel, 1951; Bender, 1968; Shinaq and Bandel, 1992; Amireh et al., 1994, 2008; Powell et al., 1994; Rushton and Powell, 1998; Elicki et al., 2002; Makhlof, 2003; Schneider et al., 2007; Shinaq and Elicki, 2007; Elicki, 2011; Hofmann et al., 2012; Bandel and Salameh, 2013; Elicki and Geyer, 2013; Mángano et al., 2013; for further references see Elicki et al., 2020). More recent research and reports on the Ordovician from the area are in, e.g., Powell (1989), Makhlof (1992), Amireh et al. (2001), Turner et al. (2005, 2012), Douillet et al. (2012), Masri et al. (2014), Makhlof et al. (2017), Masri (2017), Meischner et al. (2019, 2020), Elicki et al. (2020), and from a number of reports of mapping campaigns led by the Jordanian Natural Resources Authority (NRA) and the Ministry of Energy and Mineral Resources (MEMR) of Jordan.

The Ediacaran to Ordovician sedimentary succession in general is unconformable on the predominantly granitoid Proterozoic basement and consists of a suite of marine, marginal-marine, and continental sediments (Sharland et al., 2001; Nehling et al., 2002; Makhlof, 2003; Khalifa, 2015). Stratigraphic gaps due to denudation are common (Masri et al., 2014; Elicki et al., 2020). Intense silicate weathering during the late Cambrian and Ordovician produced enormous amounts of siliciclastic sediments (Avigad et al., 2005, 2017) assumed to be predominantly supplied by the eroding Arabian Shield (Powell, 1989). More locally, younger Palaeozoic strata are present. Among them, Silurian sediments follow unconformably deposits of the global Late Ordovician (Hirnantian) glacial episode, whereas younger Palaeozoic rocks, of Permian age, are only sporadically preserved (e.g., Keegan et al., 1990; Makhlof, 1991; Mustafa, 2003; Armstrong et al., 2005; Lüning et al., 2005; Uhl et al., 2007; Loydell et al., 2009; Bandel and Salameh, 2013;

**Fig. 1.** Regional Map and tectonic setting in the Middle East. Levant region is framed by green broken line. The discussed areas in the southern and in the northern Levant are indicated by purple-coloured ellipses (1 – southern Levant / southern Jordan, 2 – northern Levant and South Anatolian Autochthon Belt / Border Folds); Taurid regions are indicated by blue-coloured ellipses (3 – eastern Taurides, 4 – western Taurides). Reproduced from Sharland et al. (2001) with permission of Gulf Petrolink.



Stephenson and Powell, 2013; Blomenkemper et al., 2018, 2021). Bender (1968) speculated that Palaeozoic strata younger than the Silurian may have originally been present throughout Jordan, too, because they are partly known from adjacent areas in Syria, Saudi Arabia and from the Sinai Peninsula, but they may have been eroded during the later Palaeozoic and the Mesozoic. Powell (1989) mentioned post-Llandovery

Lower Palaeozoic strata from boreholes in Jordan's north-east region. Together with Bandel and Salameh (2013) they further noted the occurrence of Lower Devonian sediments in deep exploration wells in the SE near to the Saudi Arabian border (northernmost extension of the Tabuk basin), but neither provided any more detailed information or references. So, from surface exposures, Ordovician strata –the focus of this contribution – within the Levant region are nearly exclusively known from southern Jordan. Minor outcrops occur on northernmost Arabian Plate of central-north Syria (see below). Albeit limited, subsurface data, in contrast, indicate a distinctly wide distribution of Ordovician strata, however, also in the area in between, but concealed by Cenozoic to Mesozoic sedimentary cover of up to several thousand meters in thickness.

According to Sharland et al. (2001) deposition of Ordovician siliciclastic sediments at the northern rim of the Arabian-Nubian Shield occurred on the Gondwanan passive margin and represents a second tectonostratigraphic megasequence within the Arabian Plate, that lasted from the later early Cambrian until the Late Ordovician. It is generally agreed that during the Ordovician the Levant region was palaeogeographically situated in high southern latitudes. According to Scotese (2001, 2014), Golonka (2002), Ruban et al. (2007), Torsvik and Cocks (2013, 2017), Cocks and Torsvik (2021) and others a position of about 55° to 65° South or even more is reasonable (Fig. 2). Within this latitudinal zone the region migrated only moderately to the north. Significant sea-level fluctuations and a general cooling trend is recognisable throughout the Ordovician (e.g., Cocks and Torsvik 2021) from relatively warm and humid at the beginning of the period to periglacial conditions culminating in the Late Ordovician glaciation episode (Saharan glaciation; Hirnantian glaciation), indicated by the development of typical glacial lithofacies in southern Turkey and in the Levant (see below). From the southern region of the latter, Turner et al. (2012) suggested glacial episodes also during the Middle Ordovician (Darriwilian).

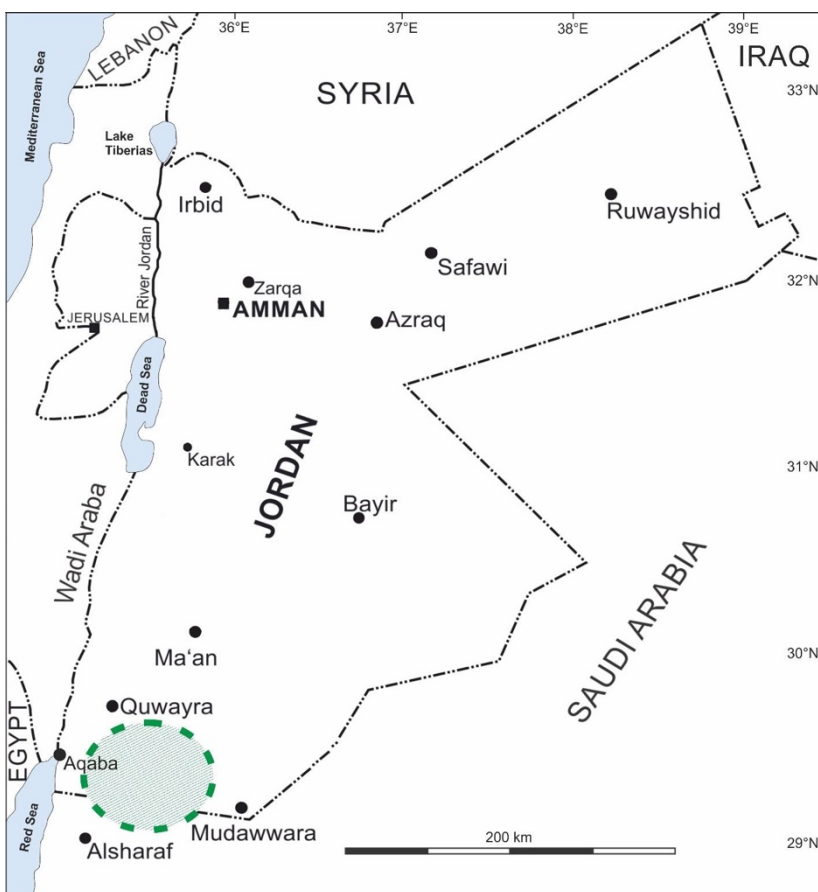
The aim of this contribution is to give an updated introduction and an overview on the Ordovician deposits of the Levant region and in southern Turkey by considering results from recent research. For more details, sedimentary columns, figured fossils and sedimentary structures, the reader is referred to the cited literature.

### **Ordovician of the southern Levant**

In the southern Levant (as currently understood; see above) Ordovician strata are exclusively known from southern Jordan (figs 1 and 3). In Israel, the Cambrian succession is unconformably overlain by Cretaceous sediments (Segev, 1984). But, in close vicinity to its southern border, the Ordovician sandstones of the Upper Araba Formation and Naqus Formation (pars) are known from the Sinai Peninsula (Khalifa, 2015; see Vecoli and Molyneux, this volume).

The siliciclastic Ordovician succession in southern Jordan is up to 1000 m thick and commences with fluvial strata at the beginning of the period (Tremadocian) with marine-influenced deposition in the

**Fig. 2.** Palaeogeography of the main landmasses in the Late Ordovician and location of the Hirnantian glaciation center. Position of the Levant-Taurid region is indicated. Modified after Sharland et al. (2001) and Cocks and Torsvik (2021).



**Fig. 3.** Geographic map showing the distribution of Ordovician surface successions in southern Jordan, east of Aqaba. Due to quality and completeness of the sedimentary record, southern Jordan represents the reference region of the Ordovician in the southern Levant. In the subsurface, sediments of that age are widely distributed over significantly larger areas (for details see text).



Floian. The marine transgression from the east to north-east occurred during the late Early to Middle Ordovician. Up until the end-Ordovician the depositional area represented an epeiric and slowly subsiding shelf-sea with only few phases of instability or prominent sea-level fluctuations, that prompted unconformities or changes in sediment type. Most relevant research on the subject was published by Bender (1968), Selley (1970), Powell (1989), Makhlouf (1992, 1998), Abed et al. (1993), Amireh et al. (2001), Turner et al. (2005, 2012), Schneider et al. (2007), Masri et al. (2014), Douillet et al. (2012), Makhlouf et al. (2017), Meischner et al. (2019, 2020) and Elicki et al. (2020), (see for further research and references) and by a large number of bulletins and map explanations from mapping projects carried out by the Geological Survey of Jordan (NRA, MEMR).

The Ordovician in southern Jordan can be subdivided in six formations belonging to two lithostratigraphic groups (compare Fig. 10 below): (1) the Ordovician part of the Ram Group with the higher Disi Formation and the Umm Sahm Formation, and (2) the Ordovician part of the Khrayim Group with the Hiswah Formation, the Dubaydib Formation, the Tubayliyat Formation, and the Ammar Formation (Masri, 1988, 2007; Abu Lihie, 1988; Masri et al., 2014; Elicki et al., 2020). Ram Group and Khrayim Group are separated by an unconformity. Whereas the lower boundary of the Ordovician is transitional within the Ram Group, the Ordovician upper boundary (within the Khrayim Group), in contrast, is represented by another unconformity, in fact a disconformity linked to end-Ordovician glaciation.

The **Disi Formation** is characterised by up to 380 m of light (“white”) sandstones and minor siltstones (Khalil, 1994). In the subsurface the formation was drilled by a number of petroleum wells in central and northern Jordan – Teimeh et al. (1990) reported a thickness of up to more than 1100 m. The lowest part of the unit consists dominantly of massive, trough cross-bedded and planar bedded fluvial braidplain sandstones (large-scale subaqueous dunes and channels; palaeocurrent direction to the north / north-north-west), it is partly conglomeratic and periodically interrupted upsection by marginal to fully marine incursions (Moumani, 2003). Various authors have reported the occurrence of trace fossils from the upper part of the Disi Formation: *Cruziana furcifera*, *C. goldfussi*, *C. rugosa*, *Gyrochorte zigzag*, as well as *Diplichnites*, *Ichnospica*, *Incisifex*, *Tasmanadia*, *Merostomichnites*, and rusophycids (Powell, 1989; Amireh et al., 2001; Moumani, 2003; for full list see Meischner et al., 2020). A Tremadocian (Early Ordovician) age is indicated for the upper part of the Disi Formation. Because the Disi Formation evolves continuously (change in colour from brown to white) from the Miaolingian to Furongian (middle to upper Cambrian) Umm Ishrin Formation, a Furongian (late Cambrian) age of the fluvial, non-fossiliferous 130 m of the lower Disi Formation is largely accepted.

The overlying **Umm Sahm Formation** reaches a thickness of up to 300 m in southern Jordan. As for the underlying Disi Formation, the thickness of the Umm Sahm Formation increases towards the east, i.e., toward the Tabuk basin of Saudi Arabia (Masri et al., 2014). In the subsurface, the formation has a wider regional distribution, but is absent from southwest and central Jordan as well as from the northern Highlands (Teimeh et al., 1990). The Umm Sahm Formation consists of thick trough cross-bedded and tabular cross-bedded quartz-arenite with thin beds of micaceous siltstone. The lower boundary of the Umm Sahm Formation is gradational and marked by its characteristic colour change from white to brown (“brown-weathering sandstone” of Bender, 1968). The lower part of the formation represents a fluvial-dominated, deltaic braidplain environment with meandering streams. No fossils are known from this section. The upper part of the Umm Sahm Formation shows a decrease in deltaic influence, temporarily returning to marine facies with a tidally influenced lower to upper shoreface including subaqueous dunes



and sand waves. The rare occurrence of channels is reported by Powell (1989) from the upper part of the Umm Sahm Formation. In heterolithic lithologies, marine deposition is clearly indicated by abundant typical marine trace fossils such as cruzianids (e.g., *Cruziana furcifera*, *C. goldfussi*, and *C. rugosa*) and *Skolithos*, *Planolites*, *Diplichnites* and *Merostomichnites*. Masri et al. (2014) mentioned the graptolite *Didymograptus* cf. *bifidus* from the uppermost part of the Umm Sahm Formation. Due to its fossil content and to the assigned Tremadocian age of the strata below (Disi Formation, see above), and due to the appearance of the Darriwilian graptolite *Didymograptus purchisoni* within the overlying Hiswah Formation (see below), a Floian to Dapingian (late Early to early Middle Ordovician) stratigraphic position of the Umm Sahm Formation is confirmed.

According to Powell (1989) the Umm Sahm Formation represents a somewhat transitional depositional unit between the predominantly fluvial conditions of the upper Ram Group below and the marine conditions of the Khrayim Group above. Above the Umm Sahm Formation there is an unconformity marking the onset of a distinct transgressive phase and therefore the beginning of the Khrayim Group that contains all the higher Ordovician (and Silurian) strata.

The oldest unit of the Khrayim Group is represented by the **Hiswah Formation**. This unit consists of a 50 m to 70 m thick succession of fine to coarse clastics that can be divided into a lower, mainly finegrained portion, and an upper, coarser-grained portion. As for the underlying Umm Sahm Formation, the Hiswah Formation has a large regional distribution, subsurface and has an increasing thickness (up to about 150 m) towards the north-east, but is absent from southwest and central Jordan and from the northern Highlands (Teimeh et al., 1990). The base of the Hiswah Formation is characterized by a graptolite-bearing sandstone horizon (on top of trough-cross-bedded, brown weathering Umm Sahm sandstones) with rippled surfaces, overlain by red-green fossiliferous shales. The Hiswah Formation has a predominantly “shaly” habit with a sandstone cap and thus it forms a characteristic morphological element in the landscape and an identifiable feature in aerial photographs and in geophysical logs. The lower part of the Hiswah Formation (HS1) consists of red, mauve and greenish, laminated, distal mudstones with only occasional thin beds of rippled siltstone. The upper part (HS2), however, is more proximal and contains sandstone-siltstone alternations with some hummocky cross-stratification (in its lower part) and trough cross-bedding, ripple crosslamination and planar cross-lamination indicating shallower-water conditions.

Whereas the predominantly shale and fine-grained silt to sandstone of the lower Hiswah Formation represents deposition in a pelagic outer, open-marine, siliciclastic upper offshore to outer shelf environment (within or beneath the storm wave base; maximum of the marine transgression) under low-energy conditions (Meischner et al., 2019), in the coarser grained upper Hiswah Formation the environment returns to higher energy foreshore to shallow upper shoreface conditions (Fig. 4). For the shaly subunit (HS1) water depths of 200 m at least are concluded by Meischner et al. (2019), the greatest water depth within the entire Ordovician succession in this region. This general depositional model for the Hiswah Formation is also supported by the fossil content of the two subunits. HS1 yields the planktonic graptolite *Didymograptus purchisoni* (formerly, erroneously determined as *Didymograptus bifidus*, see Meischner et al., 2019) and the small benthic obolid brachiopod *Palaeoglossa* cf. *attenuata* as the most common element. Further remarkable fossils are of the problematic arthropod *Hanadirella* cf. *bramkampi* (and a second, indeterminate species) and the very rare cephalopod *?Dideroceras* sp. – most were typical pelagic organisms. The shallow-water facies HS2, in contrast, contains the noted (and transported) graptolite only rarely, but *Skolithos* burrows and rusophycid and cruzianid traces occur. This fauna gives

good indication of a (middle to) late Darriwilian age (late Middle Ordovician) for the Hiswah Formation. Palaeogeographically, the taxa are related to northern and northeastern Saudi-Arabia and to the high to mid-latitude region of the Gondwanan margin in general (Meischner et al., 2019).

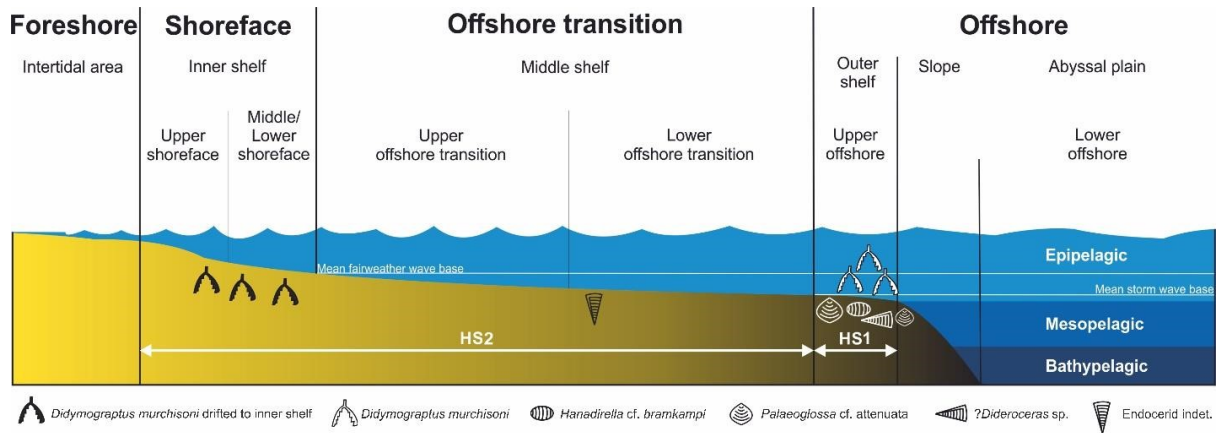
The **Dubaydib Formation** (165 m thick) overlies the upper Hiswah Formation. The unit is recognised from the subsurface too, but it is absent from the Northern Highlands and from central and southwest Jordan (Teimeh et al., 1990). Also here the largest thickness (up to 1300 m subsurface) is in the most North-east part of Jordan. The lower boundary of the Dubaydib Formation is very clearly marked by the onset of thin bedded sandstone, that is intensely bioturbated by *Skolithos* (= densely spaced burrows of *Sabellarifex*, see Meischner et al., 2020). This about 35 m thick “*Sabellarifex* sandstone” succession, where some flat channels may be present, represents the entire lower part of the formation and is overlain by massive sandstone bodies. Whereas the lower part of the succession represents a lower intertidal marine and shallow subtidal environment, higher up the sandstones and siltstones with some shales in the upper and somewhat heterolithic portion of the Dubaydib Formation was deposited on the lower foreshore to upper shoreface and mid-shelf. Typical and confirmatory sedimentological structures are, e.g., hummocky cross-stratification, trough cross-bedding, channels, planar cross-bedding, parallel lamination and ripple crosslamination (Turner et al., 2012; Masri et al., 2014).

Marine trace fossils occur at several levels within the Dubaydib Formation. *Skolithos* (= *Sabellarifex*) is common in the lower part (“pipe-rocks”, “Spaghetti-rocks”), but may also occur upsection, too, but by not in the enormous frequency as previously. Additionally, arthropod and other traces (e.g., the ichnogenera *Cruziana*, *Diplichnites*, *Merostomichnites*, *Rouaultia*, *Rusophycus*, *Arthropycus*) and some brachiopods, are present. The fossils suggest a latest Darriwilian to Sandbian age for the Dubaydib Formation (latest Middle to early Late Ordovician).

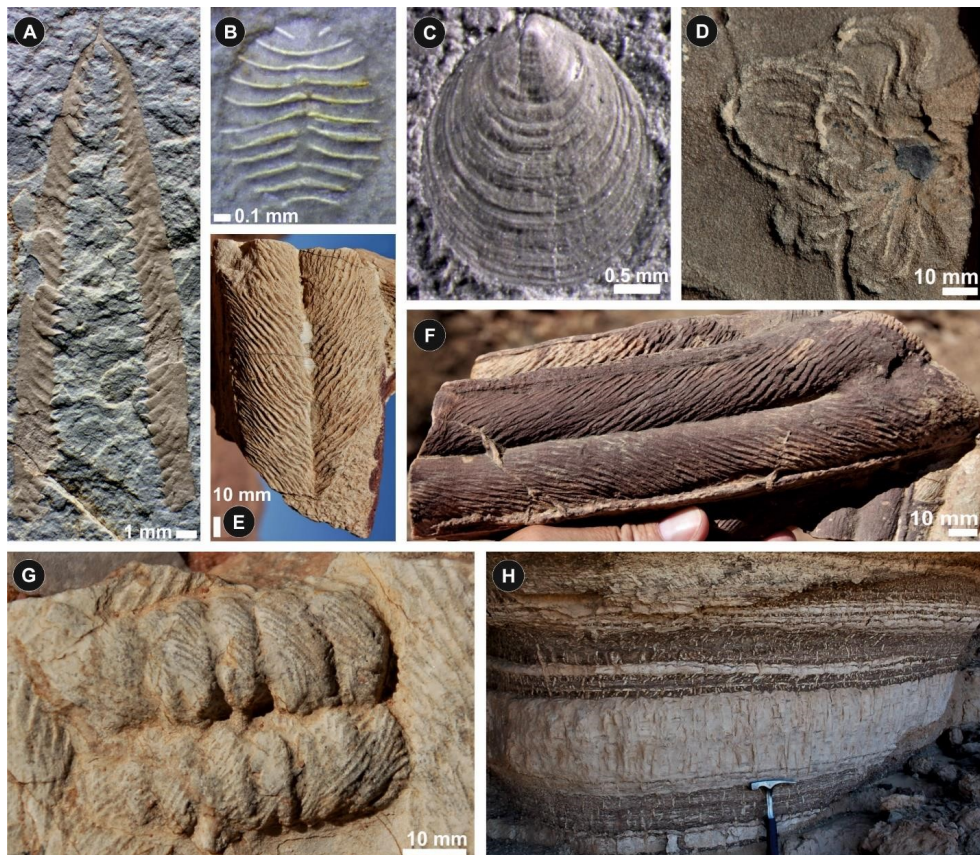
The Dubaydib Formation is succeeded by the **Tubayliyat Formation** with a total thickness of about 200 m (subsurface, in northeastern Jordan a thickness up to 1300 m is suggested by Teimeh et al., 1990). The base is defined by the occurrence of an up to 15 m thick varicoloured siltstone to finegrained sandstone bed, distinctly different from the lithology of the Dubaydib Formation below (Powell, 1989). In older publications and reports this formation was described as part of the so-called “Tubayliyat Member” (TB1 and TB2), part of the former “Mudawwara Formation” a term which is abandoned in more recent literature. The unit (and the whole higher Ordovician lithostratigraphy) has been re-defined and re-named by Elicki et al. (2020). The Tubayliyat Formation consists of sheet like beds of thin-bedded silty sandstones and siltstones with extensive ripple crosslamination and hummocky cross-stratification. Shallow marine upper and lower shoreface deposits are characteristic of the Tubayliyat Formation. The fossil content includes a few *Cruziana flamosa*, *C. perucca*, *C. lineata* and *C. petraea*, and *Arthropycus*, *Skolithos*, as well as brachiopods (e.g., *Orbiculothyris*, *Trematis*), and a reported assemblage of acritarchs and chitinozoans (pers. comm. of Molyneux, 1986, mentioned in Powell, 1989). They indicate a Katian age (Late Ordovician).

The highest Ordovician lithostratigraphic unit is the **Ammar Formation** (Abed et al., 1993; Amireh et al., 2001). This formation includes what in older literature was called the upper part of the former “Tubayliyat Member” (= TB3 and TB4 of Masri et al., 2014; compare Powell et al., 1994; Armstrong et al., 2005; Elicki et al., 2020). The same interval is referred to as the Risha Fm. in the subsurface of NE Jordan (Hirst and Khatatneh, 2019). The Ammar Formation includes all the upper Hirnantian (Ashgill) glacial related

**Fig. 4.** Reconstruction model of the depositional environment of the Hiswah Formation and habitats of the biota preserved by fossil assemblages according to Meischner et al. (2019, slightly modified). Reprinted from Meischner et al. (2019: p. 60, slightly modified), with permission of Elsevier.



**Fig. 5.** Characteristic fossil content of the Ordovician suite in southern Jordan (Meischner et al. 2019, 2020). (A) planktonic graptolite *Didymograptus murchisoni* (Beck in Murchison, 1839), lower Hiswah Formation; (B) arthropod *Hanadirella cf. bramkampi* El-Khayal, 1985, lower Hiswah Formation; (C) obolid brachiopod *Palaeoglossa cf. attenuata* (Sowerby, 1839), lower Hiswah Formation; (D) trace fossil *Zoohycus sp.*, upper Hiswah Formation; (E-G) trilobite trails *Cruziana furcifera* d'Orbigny, 1842 (E), *Cruziana goldfussi* Rouault, 1850 (F), and *Cruziana rugosa* d'Orbigny, 1842 (G), all from upper Disi Formation; (H) piperock of lower Dubaydib Formation showing mass occurrence of *Skolithos linearis* Haldeman, 1840 (in older literature synonymously reported as *Sabellarifex*; for discussion see Meischner et al. 2020).



sediments (glacio-fluvial facies, post-glacial shoreface, shales) and can reach a thickness of up to about 150 m in the axis of the palaeovalleys, with restricted thickness outside (Abed et al., 1993; Powell et al., 1994; Turner et al., 2005; Douillet et al., 2012; Masri, 2017). The lower part of the Ammar Formation is represented by shoreface sandstones, glacial channel fills and palaeo-valleys known from scattered, isolated outcrops. The lithology mostly consists of fine-grained to coarse-grained sandstone, sometimes with a diamictite texture due to large subangular exotic clasts. Interestingly, sparse brachiopods and *Skolithos* are also reported (Masri et al., 2014). This part is overlain by alternating thin beds of shale and sandy siltstone of the upper Ammar Formation, locally with trace fossils and ripple marks as indication of shallow marine conditions. According to Armstrong et al. (2005) the glaciation in Jordan ended in the late Hirnantian *persculptus* Biozone.

Above the Ammar Formation there is a distinct unconformity on which Silurian deposits sit. The finegrained offshore clastics (shales and siltstones) of this sedimentary cover represents the Batra Formation which is equivalent to the upper part of the abandoned Mudawwara Formation in older literature (Elicki et al., 2020). The boundary between the Silurian and the underlying Ordovician glacial deposits of the upper Ammar Formation is lithologically sharply defined and supported by the appearance of typical early Silurian graptolites within the unconformably overlying Batra Formation (= marine flooding after the Ordovician glacial event; e.g., Powell, 1989; Loydell, 2007; Masri et al., 2014).

It should be noted that relatively rich assemblages of acritarchs and chitinozoans have been reported from a number of wells from a northern area of the southern Levant by Keegan et al. (1990). The authors described four palynozones from eastern Central Jordan (three wells in the Wadi Sirhan area) and from northeastern Jordan (six wells in the Risha area) representing an “Ashgillian assemblage” (Hirnantian, latest Ordovician) with the index fossils *Veryhachium subglobosum*, *Villosacapsula setosapelllicula*, *Armoricochitina nigerica*, *Desmochitina minor* and *Orthosphaeridium cf. inflatum*; and a “Caradocian to early Ashgillian assemblage” (Sandbian to early Hirnantian, Late Ordovician) with *Actinotodissus crassus*, *Baltisphaerosum bystrentos*, *Peteinosphaeridium nudum* and *Orthosphaeridium bispinosum*. A “Llanvirnian assemblage” (Darriwilian, Middle Ordovician) consists of the index taxa *Stelliferidium striatum*, *Baltisphaeridium klabavense* and *Frankea longiuscula/sartbernardensis* whereas index taxa of a “Tremadocian assemblage” (lower Early Ordovician) comprise *Cymatiogalea cuvillieri*, *C. membranispina*, *Dasydiacrodium cf. palmatilobum* and *Vulcanisphaera cf. africana*. The association of the assemblages with lithostratigraphic units (formations) was not attempted by those authors.

### **Zircon-based provenance studies in the southern Levant**

Geochronological provenance data for Ordovician sediments from Jordan are relatively rare. The only research on zircon-based provenance was published by Kolodner et al. (2006, from the Umm Sahn and Dubaydib formations), and by Elicki et al. (2020, from the lower Hiswah, the middle Dubaydib and the Tubayliyat formations). Thus, with the exception of lowermost and the uppermost Ordovician strata, related zircon data for each of the Ordovician formations of southern Jordan are available. The typical fine-grained mature sandstones of the Disi Formation have not provided suitable zircons, and from the Ammar Formation no material has been investigated so far (but, see the outline paragraphs below on the provenance of glacial material in the northern Levant and southern Turkey, and Fig. 9). In southern Jordan 85 % of all recognised ages from zircons from the Ordovician siliciclastics are Proterozoic, with a very clear predominance of Neoproterozoic and late Mesoproterozoic ages. Zircons from the Umm Sahn Formation

generally show a very similar age spectrum as those for the Cambrian strata below, that is characterised by clearly dominant Neoproterozoic zircons (575–986 Ma). From the lower to higher Hiswah Formation, the age spectrum is shifted slightly to somewhat older ages from 534–631 Ma to 597–991 Ma (discussion in Elicki et al., 2020), that is a similar trend compared to the Cambrian strata below. The zircon ages of the overlying Dubaydib Formation are quite similar to those of the Hiswah Formation (582–969 Ma), but, the number of Palaeoproterozoic and Archean ages, however, increases. This is a tendency that continues into the Tubayliyat Formation above, where only 40 % of all zircons are still of

Neoproterozoic age. Here, in contrast, a majority of about 60 % is Meso- to Palaeoproterozoic. This phenomenon is interpreted by the mentioned authors by a deepening of the erosional level in the hinterland throughout the Cambrian-Ordovician evolution due to increased exposure of older basement and continued intense denudation.

Elicki et al. (2020) indicated in the closely located Arabian-Nubian Shield the main source of Neoproterozoic to Mesoproterozoic detrital zircons present in the entire Cambrian-Ordovician sandstone suite of southern Jordan. Nevertheless, for the Cadomian Gondwanan regions today farther north, Avigad et al. (2017), Ben Dor et al. (2018) and Stephan et al. (2019) have speculated additional potential sources in present-day North Africa (Saharan Metacraton) or in the southern regions of the East African Orogen. The occurrence of the minor proportion of Palaeoproterozoic and Archean zircons may support the assumption of the existence of more distant additional source areas.

### **Ordovician of the northern Levant and southeastern Turkey**

Gondwanan related upper Neoproterozoic to Lower Palaeozoic basement successions are located in Syria and in southeastern Turkey in different tectonic units of the South Anatolian Autochthon (SAAB, details in Göncüoğlu, 1997, 2010; Ghienne et al., 2010). The Late Ordovician palaeogeographic position of the region is shown in Fig. 2. Whereas Lower Palaeozoic outcrops in Syria are exclusively subsurface (see below), they are continuous with outcrops in southeastern Turkey mainly in the Hakkari (Samurdağ), Mardin (Derik), Mardin (Bedinan), Adiyaman (TutPenpegli), Kahramanmaraş (İnderesi), Kahramanmaraş (Uludaz), and Hatay (Hassa) areas within the SAAB (Fig. 6).

#### ***Syria***

The Lower to Upper Ordovician succession of Syria is exclusively known from the subsurface and consists of marine sandstones and shales (Sawaf, 1993) as indicated by a number of wells in the vicinity of the Aleppo Plateau (NW Syria), of the Palmyrides (central Syria), of the Jebel Abd el Aziz and the western extension of the Sinjar Uplift of NE Syria approximately 50 to 70 km south of the Turkish border (Husseini, 1990; Barrier et al., 2014). Regional unconformities are reported as common. Seismic logs indicate a shallow layering of the strata that are somewhat faulted by younger tectonics. The thickness of the Ordovician strata is reported as possibly more than 2.3 km. The Lower Ordovician comprises the sandstone dominated Khanasser Formation, whereas the Middle Ordovician Swab Formation is of shale lithology, and the Upper Ordovician Afendi Formation is of sandstones again (Brew et al., 1999). The general lithological succession is roughly similar to that known from the southern Levant region (see above). The large-scale depositional environment during the Ordovician is interpreted as relatively shallow shelf. Former authors (Sudbury, 1957; Flügel, 1963; Weber, 1964; Bogdanova et al., 1969) described a fauna from the Jezireh region (the area between the Euphrates and Tigris rivers) containing graptolites, but their taxonomic



**Fig. 6.** Geographic distribution of Lower Palaeozoic sediments in southern Turkey. Border Folds area is at the northern rim of the Arabian Plate and so, it is partly belonging to the northern Levant region in the context in this paper. Reproduced from Ghienne et al. (2010: p. 103, slightly modified), with permission of Elsevier.



**Fig. 7.** Correlation of the Neoproterozoic–Palaeozoic outcrops in the SAAB and TAP. (1) Dean (2006); (2) Kellog (1960), Dean et al. (1981); (3) Monod et al. (2003); (4) Dean et al. (1997); (5) and (6) Usta et al. (2015); (7) Dean et al. (1986); (8) Özgül et al. (1972), Monod et al. (2003); (9) Özgül and Kozlu (2002); (10) Demirtaşlı (1984), Kozlu et al. (2002); (11) Dean and Monod (1979); (12) Gürsu et al. (2003); (13) Özgül et al. (1992); (14) Dean and Özgül (1981); (15) Sarmiento et al. (2002); (16) Göncüoğlu and Kozur (1999), Ghienne et al. (2010); (17) Dean and Özgül (1994).

	SOUTH ANATOLIAN AUTOCHTHON BELT							TAURIDE-ANATOLIDE PLATFORM									
	HAKKARI (Samurdag)	MARDIN (Derik)	MARDIN (Bedinan)	ADIVAMAN (Tut-Penbegli)	K.MARAS (Tatrest)	K.MARAS (Uludağ)	HATAY (Hassa)	KAYSERI (Sarı)	ADANA (Eskişehirli köyü & Sarıbeyli Ovacık)	MERSİN (Silifke Ovacık)	SEYDİEHİR (Çaltepe)	ISPARTA (Kocacaman)	AFYON (Saltandığı)	KONYA (Bağcıbaşı-Hadım)	KONYA (Sohova)	ANTALYA (Kemer)	AFYON (Sarıdök)
Mesozoic cover units																	
Late Permian	Gomallıbelik Formation							Yedigöze Formation	Yedigöze Formation	Koruklu Formation							
Early Carboniferous	Kis Formation							Ziyaretçi Formation	Ziyaretçi Formation								
Devonian	Büyük Formation							Gömbüllü Formation	Gömbüllü Formation	Koruklu Formation							
Silurian	Yığın Formation							Sarıdökere Formation	Sarıdökere Formation	Akdeniz Formation							
Late Ordovician	Sort Tepe Formation							Yukarıyayla Formation	Yukarıyayla Formation	Heratlı Formation							
Middle Ordovician								Pencentepe Formation	Pencentepe Formation								
Early Ordovician																	
Late Cambrian	Sarıdökere Formation	Sarıdökere Formation	Sarıdökere Formation	Sarıdökere Formation	Sarıdökere Formation	Sarıdökere Formation	Sarıdökere Formation	Sarıdökere Formation	Sarıdökere Formation	Sarıdökere Formation	Sarıdökere Formation	Sarıdökere Formation	Sarıdökere Formation	Sarıdökere Formation	Sarıdökere Formation	Sarıdökere Formation	Sarıdökere Formation
Middle Cambrian	Koruklu Formation	Koruklu Formation	Koruklu Formation	Koruklu Formation	Koruklu Formation	Koruklu Formation	Koruklu Formation	Koruklu Formation	Koruklu Formation	Koruklu Formation	Koruklu Formation	Koruklu Formation	Koruklu Formation	Koruklu Formation	Koruklu Formation	Koruklu Formation	Koruklu Formation
Early Cambrian	Zabuk Formation	Zabuk Formation	Zabuk Formation	Zabuk Formation	Zabuk Formation	Zabuk Formation	Zabuk Formation	Zabuk Formation	Zabuk Formation	Zabuk Formation	Zabuk Formation	Zabuk Formation	Zabuk Formation	Zabuk Formation	Zabuk Formation	Zabuk Formation	Zabuk Formation
Late Neoproterozoic	Basement not observed	Derik Volcanics	Basement not observed	Meryüyük Formation	Basement not observed	Basement not observed	Basement not observed	Basement not observed	Basement not observed	Basement not observed	Basement not observed	Basement not observed	Basement not observed	Basement not observed	Basement not observed	Basement not observed	Basement not observed

determination must be largely doubted today and needs revision. According to Jörg Maletz (pers. comm. 2022) the taxonomic diversity of the graptolite fauna is low, but may represent a Sandbian to Katian stratigraphic age. Further fossils reported by Sudbury (1957) and Flügel (1963) include brachiopods (*Lingula cf. rugosa*, *Lingula* sp., *Sowerbyella?* sp.), trilobites (*Colpocoryphe arago*, *Pseudobasilicus cf. nobilis*), and the machaerid annelid worm *Plumulites cf. fraternus*. A SandbianKatian age is supported by the occurrence of *C. arago* and *P. fraternus*.

In the Amanos Mountains (next to NE shore of the Mediterranean Sea, compare Fig. 6) the nonfossiliferous shales are petrographically compared to Ordovician fossiliferous (?) equivalents in the Bahçe region (Turkey, see below); cruzianids from this area support such a stratigraphic correlation.

A few further fossil occurrences are briefly listed in Bogdanova (1969) and Ejel and Abdul Rahim (1974), but, these are rather problematic and are probably not stratigraphically significant.

### **South Anatolian Autochthon Belt (SAAB)**

#### *Rock types, biostratigraphy and palaeontology*

In the Hakkari area, Middle Cambrian trilobite-bearing carbonate rocks of the Koruk Formation are conformably overlain by silty shale dominated, siliciclastic rocks with nodular limestone lenses at the base (compare Fig. 7). They continue with shale-sandstone alternations in the upper Cambrian to Lower Ordovician Seydişehir Formation displaying silty shale dominated siliciclastic rocks at the base and afterwards with shale/sandstone alternations. The Ordovician is disconformably overlain by Upper Devonian Yiğimli Formation (Dean, 1975, 2006; Dean et al., 1981; Dean and Monod, 1997).

Lower to Upper Ordovician successions in the Mardin (Bedinan) area are unconformably underlain by the middle to late Cambrian siliciclastic rocks of the Sosink Formation and disconformably overlain by Cretaceous platform-type carbonates (Ghienne et al., 2010). The lower part of the Upper Ordovician Bedinan Formation starts with storm-dominated fine-grained siliciclastic rocks and continues with cross-bedded sandstones. Sandbian to Katian ages were proposed for the Bedinan Formation in the Mardin (Bedinan) area based on graptolites, brachiopods and trilobite faunas (*Calymenella boisseli*, *Dreyfussina* sp.) by Kellogg (1960), Dean (1967, 1983), Dean and Monod (1990), and on chitonozoans by Paris et al. (2007). The succession is unconformably overlain by the Hirnantian glacial unit, the Halevikdere Formation (Monod et al., 2003). Additionally, Oktay and Wellman (2019) have recently reported a new chitinozoan and acritarch fauna from the lower to upper parts of the Bedinan Formation by evaluation of rock fragments from a well near Diyarbakır area. They assigned the *moussegoudaensis/oulebsiri* biozone for the upper parts of the formation, expanding northward the spatial distribution of the glaciation-related Halevidere Formation.

Ordovician outcrops have been reported from the Derik (Mardin), from Tut-Pen Pegli (Adıyaman) and Bahçe areas and from the Uludaz Nappe (Kahramanmaraş) area in the SAAB. In the Uludaz Nappe, the basement rocks start with lower Cambrian meta-siliciclastic rocks of Küçük Sır and Yolakdere formations and continue with middle Cambrian trilobite bearing recrystallised carbonates (Usta et al., 2015). The succession is conformably overlain by trace fossil bearing the metasiliciclastic rocks of the Kalekaya Formation (e.g., *Cruziana goldfussi*, *C. rugosa*, *C. furcifera*; Fig. 8), (Demircan and Usta, 2012, Demircan et al., 2012), and meta-siliciclastic rocks of the Middle to Late Ordovician Uluziyaret Formation with



unidentified trace fossils and trilobite remains (Usta et al., 2015). The Lower Palaeozoic units are unconformably overlain by Upper Devonian siliciclastic rocks of the Küperli Formation and Cretaceous cover units (Usta et al., 2015). In the Bahçe Nappe, lower Cambrian (meta-siliciclastic rocks of Dedeler and Zabuk formations) and middle Cambrian (mainly calcareous Çaltepe Formation) is overlain by the upper Cambrian to Lower Ordovician Seydişehir Formation with *Cruziana* ichnofacies trace fossils from a tide-dominated shallow marine environment (*Arthropycus*, ?*Circulichnis*, *Cruziana*, *C. furcifera*, *C. imbricata*, *C. rugosa*, *C. goldfussi*, *Deadulus*, *Didymaulichnus*, *Diplocraterion*, *Monocraterion*, *Monomorphichnus*, *Teichichnus*, *Skolithos*, *Palaeophycus*, *Planolites*, *Rusophycus*, *Protovirgularia*, *Trichophycus*) (Demircan and Usta, 2012) (Fig. 8). The succession is conformably overlain by the meta-siliciclastic rocks of the Kardere Formation with a well-preserved and nearly identical Early Ordovician arthropod and vermiform-type trace fossils (but, with *Bergaueria* instead of *Arthropycus* and ?*Circulichnis*) (Demircan et al., 2016a, b). The Lower Palaeozoic sequences are unconformably overlain by the meta-siliciclastic rocks of the Upper Devonian Hamzabeyli Formation (Usta et al., 2015).

Lower to Upper Ordovician successions have been reported in the SAAB from the Mardin (Derik) region and from trace fossil bearing strata in the Adıyaman (Tut-Penpegli), Hakkari (Samurdağ), Kahramanmaraş (İnderesi and Uludaz Nappes), Hatay (Hassa) and Mardin (Bedinan) areas.

#### *Sedimentological Features*

Based on long-term major transgressive and regressive events and subsequent shelf progradation, Ghienne et al. (2010) classified the Cambrian-Ordovician sequences as depositional sequences. The Cambrian Depositional Sequence 2 is conformably overlain by Depositional Sequence 3, commencing in the Cambrian essentially includes Tremadocian, Floian and Dapingian strata, but, a stratigraphic hiatus is reported at the boundary between the Depositional Sequences 3 and 4 (see also Fig. 11, below). Depositional Sequence 4 relates to rocks of Darriwilian, Sandbian, Katian and early Hirnantian ages in the SAAB and TAP.

In the SAAB, Depositional Sequence 3 starts with shallow-marine strata (storm and offshore dominated siliciclastic rocks) of the highest Cambrian to Lower Ordovician Seydişehir Formation in the Zap valley near Hakkari area (Martin, 1996; Dean, 2006; Ghienne et al., 2010) and is disconformably overlain by fine-grained siliciclastic rock of the Upper Ordovician Şort Tepe Formation (Bedinan Formation). Lower to Middle Ordovician successions represent Depositional Sequence 4 and are known from the Kahramanmaraş and Hatay area (Kardere Formation and Uluziyaret Formation). They conformably overlie the upper Cambrian Sosink Formation and are composed of meta-siliciclastic rocks deposited in a high-energy shallow marine environment (best preserved in the Kahramanmaraş area, İnderesi Nappe and Uludaz Nappe, and in the Hatay/Hassa area; Usta et al., 2015). The Sandbian to Hirnantian Ordovician succession (Depositional Sequence 4), is exclusively cropping out near Mardin (Bedinan) with an angular unconformity at the regional scale above the underlying upper Cambrian Sosink Formation due to regional tectonic uplift of the

Mardin High between late Cambrian and Sandbian (Bozdoğan and Erten, 1990; Ghienne et al., 2010).

A recent study (Ghienne et al., 2010) shows that here the Sandbian to lower Katian Bedinan Formation starts with storm-dominated fine-grained siliciclastic rocks at the base and continues with high-frequency, storm-dominated, offshore to shoreface cycles and cross-bedded sandstones. The suite is later truncated

by the upper Katian to Hirnantian glaciation-related deposits (Paris et al., 2007; Monod et al., 2003) of the Halevikkdere Formation.

## Ordovician of Central southern Turkey

### *Tauride-Anatolide Platform (TAP)*

Outside the South Anatolian Autochthon additional Gondwanan related upper Neoproterozoic to Lower Palaeozoic successions occur in the area of the Tauride-Anatolide Platform (TAP; Göncüoğlu, 1997; Ghienne et al., 2010). Here, the Lower Palaeozoic outcrops are mainly located in the eastern Taurides (ET) within the Kayseri (Sariz) and Adana (Feke, Saimbeyli, Tufanbeyli) areas, and in the Central and Western Taurides (CT, WT) within the Mersin (Silifke-Ovacık), Seydişehir (Çaltepe), Isparta (Kocaoşman), Afyon (Sultandağı, Sandıklı), and Konya (Bağbaşı-Hadim) regions. Outside the Taurides sensu stricto Ordovician rocks are recognised close to Antalya (Kemer area) (Fig. 6, Fig. 7).

### *Rock types, biostratigraphy and palaeontology*

In the Feke-Tufanbeyli-Saimbeyli-Kozan (Adana, ET) region, the basement unit consists of the upper Neoproterozoic Emirgazi (Kozan) Formation, that is disconformably overlain by lower Cambrian meta-siliciclastic rocks of the Koçyazı Formation, and by middle Cambrian trilobite bearing (*Paradoxides* sp.) meta-carbonates of the Çaltepe Formation (Özgül et al., 1973; Kozlu and Göncüoğlu, 1997; Özgül and Kozlu, 2002). The succession has a transitional contact with metasiliciclastic rocks (with trilobites, graptolites, brachiopods and trace fossils) of the upper Cambrian to Lower Ordovician Armutludere Formation and continues upwards into the fossiliferous Upper

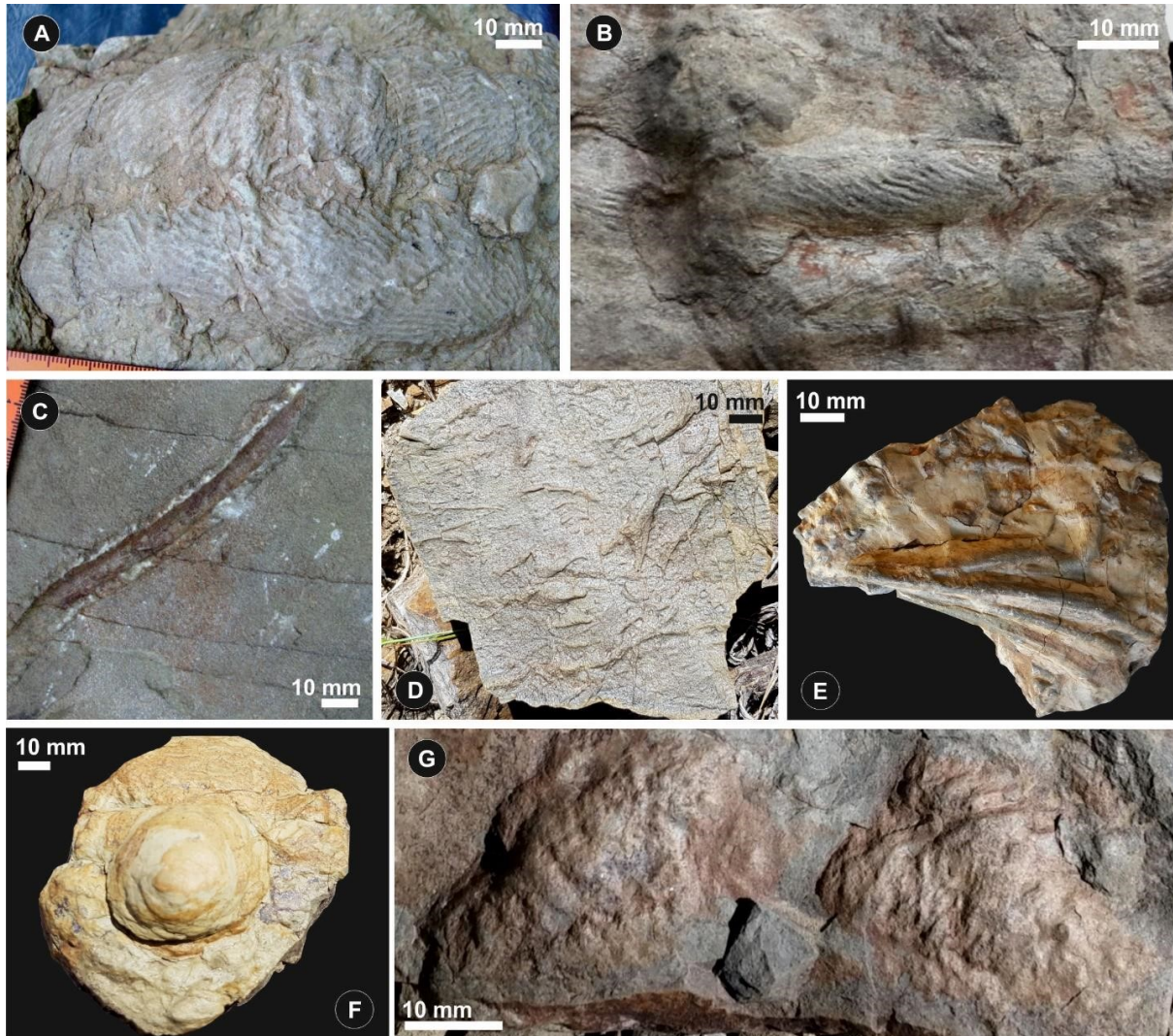
Ordovician meta-siliciclastic rocks of Şort Tepe Formation (Özgül et al., 1973; Özgül and Kozlu, 2002; Monod et al., 2003). The conodonts *Acodus?* sp., *Ansella jemtlandica*, *Baltoniodus navis*, *B. cf. navis*, *B. norrlandicus*, *Baltoniodus?* sp., *Cornuodus longibasis*, *Drepanodus* sp., *D. arcuatus*, *D. cf. planus*, *Drepanoistodus basiovalis*, *D. cf. basiovalis*, *D. bellburnensis?*, *D. forceps*, *Lenodus* sp., *Microzarkodina* sp., *Protopanderodus rectus*, *Protopanderodus* sp., *Scolopodus rex*, *Trapezognathus* sp., *Triangulodus brevibasis* and *Tropodus?* sp., as well as a chitinozoan fauna were reported from the Şort Tepe Formation in the Kozan-Adana area and were attributed to the *Baltoniodus norrlandicus* biozone representing an early Darriwilian age (Sarmiento et al., 2003). In the same area, Paris et al. (2007) identified a chitinozoan fauna with *Cyathochitina campanulaeformis*, *Desmochitina minor*, *D. cocca*, *L. clavata*, *Linochitina pissotensis*, various *Conochitina* and *Belonechitina* species and *Tanuchitina* aff. *ontariensis*, *Belonechitina*, *Conochitina*, *Euconochitina*, *Calpichitina* sp., *Cyathochitina* ssp., suggesting a Darriwilian to Sandbian age. The succession is disconformably overlain by the glacial succession of the Hirnantian Halevikkdere Formation (Monod et al., 2003). Near the base, an acritarch assemblage of *Baltisphaeridium* cf. *hirsutoides*, *Baltisphaeridium* spp., *Multiplicisphaeridium bifurcatum*, *Ordovicidium heteromorphicum*, *Peteinosphaeridium* cf. *bergstroemi*, *P. trifurcatum intermedium*, *Polyancistrodorus intricatus*, *Solisphaeridium nanum*, *Veryhachium trispinosum* and *Villosacapsula irroratumre* from the highest Ordovician (Hirnantian) were identified by Paris et al. (2007). The Palaeozoic units continue upwards with lower Silurian to Upper Permian units in the ET.

One of the best regions with continuous Lower Palaeozoic successions is located near the Değirmentaş village in the Sariz-Kayseri (ET) area. The basement rocks include the middle Cambrian Çaltepe Formation

with disarticulated shelly fossils and echinoderms, followed by the upper Cambrian (Furongian) to Lower Ordovician (Tremadocian) conodont bearing offshore siliciclastics of the Seydişehir Formation (Özgül et al., 1972; Monod et al., 2003; Göncüoğlu et al., 2004, 2012). The succession is unconformably overlain by Upper Ordovician (Katian) outer shelf siliciclastics of the Şort Tepe Formation and the glaciomarine outwash fan to distal glaciomarine to offshore siliciclastic sediments of the Hirnantian Halevikdere Formation (Özgül et al., 1972; Monod et al., 2003; Ghienne et al., 2012; Ghienne and Kozlu, 2012). The stratigraphic age of the Şort Tepe Formation is indicated by chitinozoans (*Cyathochitina*, *C. latipatagium*, *Desmochitina minor*, *Euconochitina* aff. *communis*, *Lagenochitina*) and acritarchs (*Actinotodissus crassus*, *Baltisphaeridium* spp., *Multiplicisphaeridium* cf. *irregulare*, *Orthosphaeridium*, *Villosacapsula irrorata*, *Veryhachium*, cryptospores, leiospheres, triapsidate veryhachiids, *Baltisphaeridium*, *Dactylofusa platynetrella*), as well as by trilobite assemblages (Dean and Monod, 1990; Paris et al., 2007). Lower Silurian to Upper Permian sediments follow conformably on the Lower Palaeozoic succession in the Sarız-Kayseri area (Özgül et al., 1972). In Silifke-Ovacık (CT), the succession begins with upper Neoproterozoic meta-siliciclastic rocks and meta-volcanic rocks-dominated Sipahili Formation and is unconformably overlain by metasiliciclastic rocks of the lower Cambrian Hüdai Formation. Meta-carbonates of the middle Cambrian Çaltepe Formation and of the upper Cambrian to Middle Ordovician (upper Darriwilian) metasiliciclastic rocks of the Seydişehir Formation follow upwards (Demirtaşlı, 1984; Gül, 1990; Koç et al., 2005). The latter formation contains abundant conodonts (*Complexodus originalis*, *Sagittodontina kielcensis*, *Baltoniodus* sp., *Drepanoistodus* sp., *Panderodus* sp., *Semiacontiodus* n. sp. A, *Cornuodus longibasis*, *Scalpellodus gracilis?*, *Scalpellodus* sp., *Lenodus* sp., *Ansella?* n. sp., *Microzakodina* cf. *hagetiana*) and chitinozoans (*Conochitina* sp. and *Conochitinidae*), (details in Kozlu et al., 2002; Paris et al., 2007). The Hirnantian Halevikdere Formation rests unconformably on the basement rocks and in the Mersin-Silifke-Ovacık area it is followed by fossiliferous lower Silurian to Upper Permian successions (Demirtaşlı, 1984; Kozlu et al., 2002; Koç et al., 2005; Gürsu et al., 2017, 2018). In the Seydişehir (Çaltepe, CT), Isparta (Kocaosman, CT), Afyon (Sultandağı, CT), Konya (Bağbaşı-Hadım, CT), Konya (Sobova, CT) and Afyon (Sandıklı, WT) areas, upper Cambrian to lower Middle Ordovician (lower Darriwilian) meta-siliciclastic rocks of the Seydişehir Formation rests conformably on the middle Cambrian Çaltepe Formation and are unconformably overlain by the Darriwilian Sobova Formation (Dean and Monod, 1970; Dean and Özgül, 1981; Özgül et al., 1992). A fauna of conodonts (*Baltoniodus norrlandicus*, *Drepanodus arcuatus*, *D.* cf. *arcuatus*, *D.* cf. *planus*, *Drepanodus* sp., *Drepanoistodus forceps*, *Drepanoistodus* sp., *Cornuodus* cf. *longibasis*, *Lenodus?* sp., *Microzakodina* sp., *Protopanderodus calceatus*, *Protopanderodus* sp., *Scolopodusrex*, *Triangulodus?* sp.), acritarchs (*Coryphidium bohemicum*, *Erikanthea pollicipes*, *Polygonium acuminosum*, *Striatotheca rarirugulata*) and sphaeronitid blastozoans (*Diploporita*, *Aristocystitida*, *Asteroblastida*, *Protocrinitida*, *Sphaeronites*, *Diplosphaeronis*) support a Middle Ordovician (latest Dapingian to earliest Darriwilian) depositional age for the Sobova (Bedinan) Formation in the Sobova-Konya area (Sarmiento et al., 1999; Paris et al., 2007, Nardin et al., 2014). Similarly, chitinozoans (*Conochitina*, *Euconochitina*, *Belonechitina* sp., *Cyathochitina campanulaeformis*, *Yathochitina* sp.) and acritarchs (*Peteinosphaeridium*, *Aremoricanium rigaudae*) indicate a middle late Darriwilian age (Middle Ordovician) of the Sobova Formation in the Seydişehir-Çaltepe area (Paris et al., 2007). Middle to Upper Ordovician successions are missing in the Isparta (Kocaosman, CT), Afyon (Sultandağı, CT), Konya (Bağbaşı-Hadım) and Afyon (Sandıklı) areas.

In the Kemer area (Antalya Nappes), the basement succession starts with the middle Cambrian Çaltepe Formation and continues with the upper Cambrian to Lower Ordovician Seydişehir formation. Göncüoğlu

**Fig. 8.** Cambrian-Ordovician trace fossils from southeastern Turkey (Demircan et al., 2016a, b; Demircan and Usta, 2012). (A) *Cruziana rugosa* d'Orbigny, 1842, lower part of the Kardere Fm., Lower Ordovician; (B) *Cruziana goldfussi* Rouault, 1850, lower part of the Kardere Fm., Lower Ordovician; (C) *Trichophycus* isp., lower part of the Kardere Fm., Lower Ordovician; (D) ?*Monomorphichnus* isp., lower part of the Seydişehir Fm., upper Cambrian to Lower Ordovician; (E) *Phycodes circinatum* Richter, 1853, lower part of the Seydişehir Fm., upper Cambrian to Lower Ordovician; (F) *Bergaueria* isp., lower part of the Seydişehir Fm., upper Cambrian to Lower Ordovician; (G) *Rusophycus* isp., lower part of the Seydişehir Fm., upper Cambrian to Lower Ordovician.



and Kozur (1999) identified the conodonts *Phakelodus tenuis*, *P. terashimai*, *Furnishina furnishi*, *Furnishina* sp., *Cordylodus lindstromi*, *Eoconodontus* sp., *Paltodus varanguensis*, *Drepanodus?* sp., and *Paltodus* sp., indicating a late Cambrian to early Tremadocian depositional age for the nodular lower parts of the Seydişehir Formation. From a similar red nodular limestone near Kemer, Gedik (1977) reported a conodont fauna consisting of *Drepanoistodus forceps*, *Microzarcodina flabellum*, *Baltoniodus triangularis*, *Acontiodus arcuatus*, *Oistodus inaequalis*, *Trapezognathus triangularis* and *Oepikodus evae*, and suggested an early Tremadoc to middle Arenig (Early Ordovician) depositional age for the Seydişehir Formation (refined to Floian according to L. Popov, pers. comm.). Katian lower offshore fossiliferous siliciclastic rocks of the Sarıyardere Formation (the chitinozoans *Euconochitina* sp., *Cyathochitina* sp. according to Paris et al., 2007) continue upwards. This is overlain by the glaciomarine shelf-deposited Hirnantian Halevikdere Formation (Dean et al., 1999; Ghienne et al., 2010).

### *Sedimentological Features*

Depositional Sequence 3 (see above for explanation of the defined depositional sequences) starts with the meta-siliciclastic rocks of the Seydişehir Formation affected by low-grade metamorphism and imbricated due to the Alpine orogeny. These upper Cambrian (Furongian) siliciclastic rocks represent a transgressive system and condensed sedimentation (Ghienne et al., 2010). The succession is composed of alternations of shoreface fine-grained sandstones, inner to outer shelf offshore shales and silts, and red nodular limestone horizons at the base with a fauna indicating a Tremadocian age (Haude, 1975; Özgül et al., 1972; Göncüoğlu et al., 2004). The upper part of the formation is composed of an alternation of macrofossil bearing siltstones and sandstones indicating a Floian and early Middle Ordovician age (Dean and Monod, 1970; Monod, 1967). Sedimentological features of the upper Cambrian to Lower Ordovician Seydişehir Formation corresponds to the similarly short-term regressive succession in the Hakkari (Zap) area (Dean, 2006; Ghienne et al., 2010). In the CT, the formation is composed of siltstone-sandstone alternations displaying bioturbation, wave ripples, climbing ripples, cogenetic ripples and gutter casts typical of a storm-dominated, shallowing-upward facies (Ghienne et al., 2010). The conodont and chitinozoan faunas indicate a depositional age of late Darriwilian (Middle Ordovician) for the upper parts of the formation (Sarmiento et al., 2003; Kozlu et al., 2002; Paris et al., 2007). Ghienne et al. (2010) reported thin tidal-dominated siliciclastic rocks in a proximal depositional environment from upper parts of the Seydişehir Formation what is comparable to equivalent units in the TAP. Depositional Sequence 4 of the TAP rests disconformably on the Depositional Sequence 3.

Stratigraphically, Ghienne et al. (2010) classified the Depositional Sequence 4 as Darriwilian, Sandbian to Katian, and Hirnantian. In the Kayseri (Sariz, ET), Adana (Feke-Tufanbeyli-Saimbeyli-Kozan, ET), Seydişehir (Çaltepe, CT), Konya (Sobova, CT) and Antalya (Kemer, CT) areas the Depositional Sequence 4 starts with the lower Darriwilian Şort Tepe (Sobova) Formation (Dean and Monod, 1970; Dean, 1973; Sarmiento et al., 2003), (Fig. 7). The succession begins with thick limestones deposited in shoreline backsteps reflecting distal conditions. They continue upwards with condensed sedimentation at high sea-levels (Ghienne et al., 2010). Middle to upper Darriwilian parts of the formation represent delta sediments with flute casts and current ripples, especially in the outcrops in the CT. Equivalent outcrops in the ET are composed of meta-siltstones and intraformational conglomerates with overlying meta-sandstones of deltaic or mass-flow deposition during fast and forced regression (Paris et al., 2007; Ghienne et al., 2010). The middle unit of Depositional Sequence 4 in the CT is mainly composed of regionally diachronous thick siltstones to fine-grained sandstones of generally fine-grained storm-dominated successions. Equivalent sequences in the

ET are made up of graptolite-bearing siltstones and fine-grained sandstones of a non-subsiding outer shelf to upper-slope depositional environment with bottom-current sand deposits (Paris et al., 2007; Ghienne et al., 2010).

The Hirnantian Halevikdere Formation begins with sandy diamictites, massive coarse-grained conglomeratic sandstones from the glaciomarine outwash, and clay bearing sandstones. This continues upwards with distal glaciomarine grading upwards to offshore shelf deposits of clayey sandstone-siltstone/mudstone alternations in the Adana (Kozan, Feke, Saimbeyli), Mersin (Silifke-Ovacık), and Antalya (Kemer, CT) regions (Monod et al., 2003; Ghienne et al., 2010, Gürsu et al., 2017). Abundant erosion-based coarse-grained sandstone lenses with striated facets, dominant quartz clasts, a few felsic pebbles, and reworked micro- and macrofauna in the glaciomarine sequence have been reported from outcrops of the TAP and SAAB (Monod et al., 2003; Ghienne et al., 2010; Gürsu et al., 2018).

### ***Hirnantian glaciation and related zircon-based provenance studies in southern Turkey***

Late Ordovician (Hirnantian) glaciomarine deposits are best exposed in the Mardin-Bedinan (SAAB), Adana-Kozan (ET), Adana-Feke-Saimbeyli (ET), Adana-Tufanbeyli (ET), and Mersin-Silifke-Ovacık (CT) areas (e.g., Cater and Tunbridge, 1992; Bozdoğan et al., 1996; Göncüoğlu, 1997; Göncüoğlu and Kozlu, 2000; Ghienne et al., 2010; Özgül and Kozlu, 2002; Monod et al., 2003; Göncüoğlu et al., 2004; Paris et al., 2007; Gürsu et al., 2017). Previous studies have shown that glaciation-related successions (Halevikdere Formation) have two diamictite units that identify a lower and upper glacial cycle separated by condensed offshore shales in the Kemer area (Monod et al., 2003; Ghienne et al., 2010). In the Degirmentas-Kilgen Lake area, however, the two cycles are amalgamated, separated by a glacial pavement. Granitic and sedimentary limestones, some of which are deposited as dropstones, are best exposed in the glaciomarine successions within the diamictites of the lower glacial cycle, especially in the outcrops at Adana-Kozan-Feke-Saimbeyli-Tufanbeyli (ET) and Mersin-Silifke-Ovacık (CT) areas, respectively. The glaciomarine succession in the SAAB rests unconformably on the Katian siliciclastic rocks of the Bedinan Formation and continues upwards with sandy diamictites, massive coarse-grained conglomeratic sandstones, clay bearing sandstones and clayey sandstone-siltstone/mudstone alternations (Ghienne et al., 2010; Gürsu et al., 2017). In the TAB the glaciomarine succession rests disconformably on the Lower Ordovician (Tremadocian to Floian) Seydisehir Formation in the Adana-Feke-Gökmenler area (ET, with a Darriwilian to Sandbian unit in between; see Ghienne et al., 2010; Kozlu and Ghienne, 2012), and in the Mersin-Silifke-Ovacık area. In the Adana-Kozan (ET), Adana-Feke-Gökmenler (ET), Adana-Tufanbeyli (ET) and Antalya-Kemer (CT) areas, however, the glaciomarine successions are disconformable on top of the Katian (Late Ordovician) Şort Tepe Formation and Saryardere Formation (Gürsu et al., 2017). In the ET and CT, the glaciomarine succession starts with coarse-grained conglomeratic sandstones and pebbly sandstones with sandy diamictite. Upwards follow bedded sandy diamictites, coarse-grained laminated sandstones, sandstone lenses, pebbly sandstone (dropstones), and distal shallow marine fine-grained sandstone lenses and sandy / muddy diamictites (details in Monod et al., 2003; Ghienne et al., 2010).

Geochronological characteristics of the rock fragments transported during glacial episodes combined with U-Pb dating offer extensive evidence for determining the provenance of the glaciomarine sands and other dropstones. Based on zircon U-Pb geochronology, Gürsu et al. (2017, 2018) evaluated the provenance of granitic and sedimentary pebbles of the diamictites. All studied diamictite samples were from the lower part of the glaciomarine succession of the glacial cycle in the SAAB and TAP. Gürsu (2016) and Gürsu et al.



(2017, 2018) suggested that granitic pebbles in the CT and ET originated from the Neoproterozoic granitic/meta-granitic/meta-granodioritic rocks of the northern Nubian Shield (Egypt) and were transported to the TAP segments of Turkey by Late Ordovician ice sheets. The detrital zircon ages indicate a provenance close to the Cadomian basement of the periGondwanan terranes during the Late Ordovician. Kernel/probability density diagrams of ages from detrital zircons from the glaciomarine successions showed that they were derived from strata comparable to the middle/upper Cambrian siliciclastic rocks in the Israeli part of the Sinai Peninsula (southern Levant). Abundant upper Neoproterozoic detrital zircons with high percentages of Cryogenian ages from the CT indicate that this region was seemingly closer to the juvenile basement of the Arabian-Nubian Shield than its counterparts in the ET and SAAB. The provenance of the material of the glaciomarine successions in the CT and ET is directly correlated with magmatic activity in the Elat-Feinan island arc, the Sa'al island arc, and the post-collisional magmatic suites of the Sinai Peninsula. Coeval glaciomarine succession of the SAAB, however, may have been derived from the Ha'il/Afif terranes of the eastern Arabian Shield during the Late Ordovician glaciation (Fig. 9).

### **Correlation and conclusions**

The Cambrian-Ordovician depositional evolution of the region was interpreted by Sharland et al. (2001) as comprising a distinct tectonic megasequence (extending from the lower Cambrian Salib Formation and Umm Gaddah Formation, to the Upper Ordovician Tubayliyat Formation and its equivalents plus the glacial deposits of the succeeding tectonic megasequence (Ammar Formation and its equivalents). Thus, a comparison of the southern Levant, the northern Levant, southern Turkey and Saudi Arabia is possible due to a common setting (Fig. 10). Characteristic for this region is, generally, that Lower and higher Middle to Upper Ordovician inner shelf clastics are separated by Middle Ordovician outer shelf shales (e.g., Konert et al., 2001; Garfunkel, 2002; Al Hussein, 2008; Ghienne et al., 2010; Masri et al., 2014). Based on recurrent sequence stratigraphic features, Ghienne et al. (2010) noted similar trends in the Lower Palaeozoic successions in the Taurides region over the entire area as far as the Arabian plate (Fig. 11). Additionally, there seems to be a remarkable similarity between the Early to Mid-Ordovician trace fossil assemblages and related depositional systems of the Levant and southwestern Europe and northern Africa (Meischner et al., 2019, 2020; Elicki and Magnus, 2021; Elicki, unpublished). These areas may offer a further potential correlative tool within this palaeogeographic domain.

Biostratigraphic data from the Ordovician successions are limited from the Levant and southern Turkey, because (i) relevant surface outcrops are missing over large areas (e.g., in the wide expanses of central and northern Jordan and in Syria), because (ii) wells (that currently exist) are mostly concentrated only in distinct regions (prospective basins), or because (iii) of erosion due to regional or local uplift and emergence (as for Israel and northwest Syria). Thus, the exact stratigraphic position of formation boundaries, and consequently the stratigraphic correlation of these units over distances are based for the large part on the lithostratigraphic characteristics alone and remain confused. A further problem is the often outdated taxonomic identifications of stratigraphically significant, but rare key fossils. A number of determinations are obviously problematic and need reevaluation. Figure 10 illustrates a synopsis by considering various stratigraphic data and suggestions (by lithostratigraphy, biostratigraphy, sequence stratigraphy, and log-data) from the southern and northern Levant and southern Turkey. Additionally, a stratigraphic scheme for Saudi Arabia is included for comparison.



The stratigraphic horizon showing the initiation of the Ordovician sedimentation, that is the exact Cambrian-Ordovician stratigraphic boundary, cannot be clearly fixed within the successions of the region due to facies changes in the depositional systems that are sometimes non-marine with rare fossils. In each of the areas mentioned in Fig. 10 this boundary is located within a transitional lithostratigraphic unit (formation). A distinct supra-regional signal is not developed until the early Middle Ordovician paraconformity at the base of the Hiswah Formation and its regional equivalents. In the Upper Ordovician the glacial-related „within Hirnantian“ unconformity is well articulated in most regions and represents a further supra-regional signal.

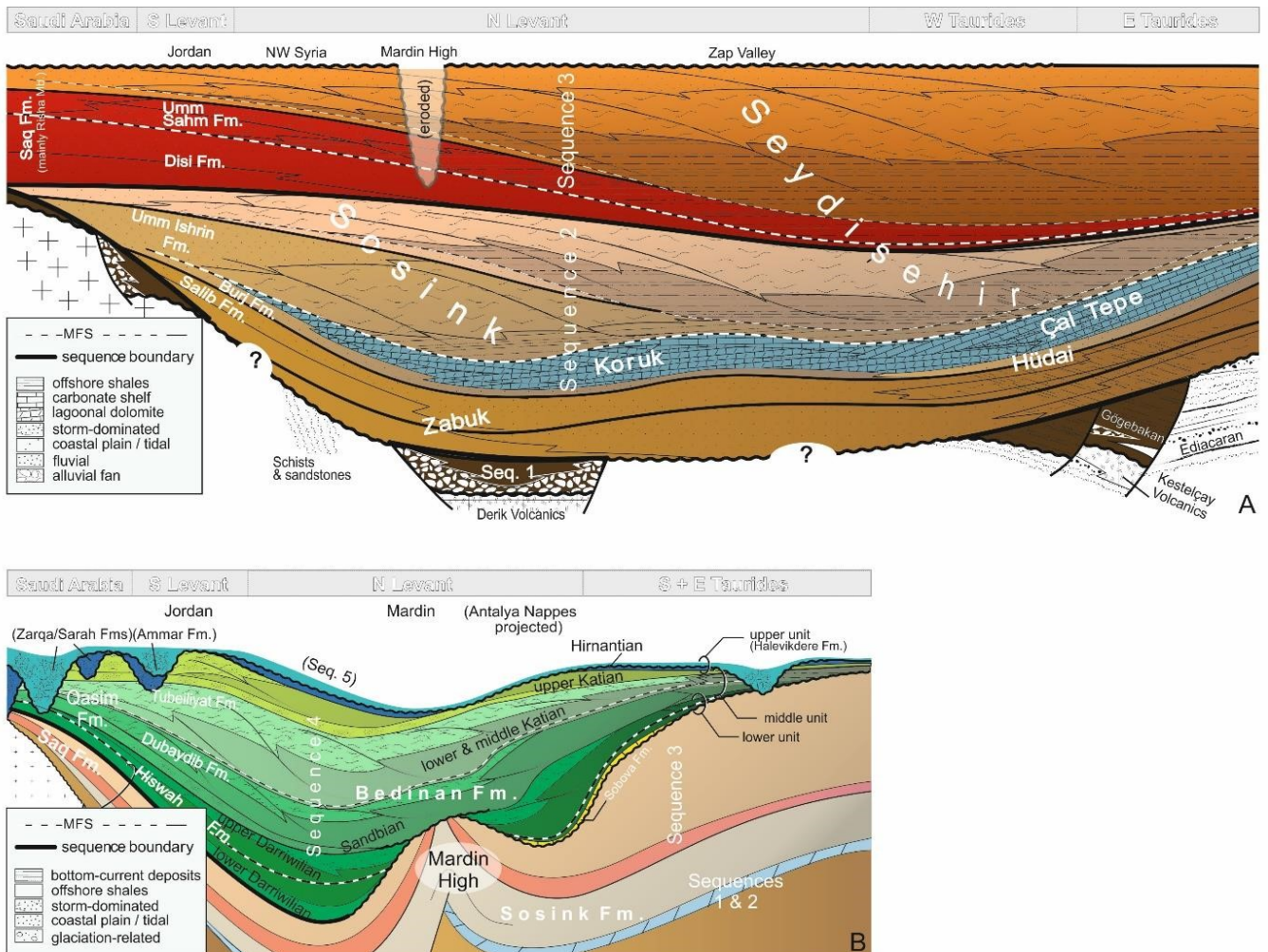
To achieve more detailed correlation of the Ordovician formations of the various areas the following research is needed: (i) an intensification of stratigraphic research on surface outcrops, e.g. in southern Jordan and Turkey, (ii) a critical re-evaluation of the hitherto reported palaeontological material from wells, and (iii) a combined stratigraphic evaluation considering all available geophysical data (log data and seismic profiles). Although fundamental changes in the stratigraphical and depositional model of the Ordovician in the Levant and southern Turkey regions is not expected, a refinement, however, of (a) the supra-regional correlation of depositional units and their detailed stratigraphic signature and extent, and (b) the larger scale palaeogeographic relations, especially to the more southerly located Ordovician successions of the Arabian Plate and northern Africa together with the southern to central European “Perigondwanan” regions.

### **Acknowledgements**

The authors gratefully acknowledge the constant support and availability of all facilities during field work over many years by the Jordan Ministry of Energy and Mineral Resources – MEMR (for OE, TM, AM and KM) and by the Türkiye Petrolleri Anonim Ortaklığı – TPAO (for SG, JFG, HD). Turkey's part to this study was financially supported by Scientific Research Office of Muğla Sıtkı Koçman University (Projects of BAP-18/54). Ongoing valuable help from M.A. Ali Hussein and A. Gharaibeh (Amman, Jordan) is acknowledged. TM is grateful for substantial financial support from the Friend's Associations of Freiberg University “Freunde und Förderer der Technischen Universität Bergakademie Freiberg e.V.” (VFF) and “Förderkreis Freiburger Geowissenschaften” (FFG). This work is a contribution to the consecutive projects IGCP 653 („The onset of the Great Ordovician Biodiversification Event“) and IGCP 735 („Rocks and the Rise of Ordovician Life“) and to IGCP 668 („Equatorial Gondwanan History and Early Palaeozoic Evolutionary Dynamics“). The authors would like to thank D.A.T. Harper (Durham) for linguistic help, and Leonid Popov (Cardiff) and an anonymous reviewers for their useful comments.



**Fig. 11.** Transregional architecture of the Cambrian to early Middle Ordovician Depositional Sequences 1 to 3 (A) and late Middle Ordovician and Late Ordovician Depositional Sequence 4 (B). “Mardin High” is a local uplift in the northern Levant due to Middle Ordovician tectonics. Upper Ordovician (Hirnantian) glacial deposits overlay a deeply incised erosion surface regionally reaching the Lower Ordovician (Taurides) and the Cambrian (Saudi Arabia). Reproduced from Ghienne et al. (2020: pp. 103, 109, slightly modified ) with permission of Elsevier.



## References

- Abed, A.M., Makhlof, I.M., Amireh, B.S. and Khalil, B. 2003. Upper Ordovician glacial deposits in southern Jordan. *Episodes*, **16**, 316–328.
- Abu Lihie, O. 1988. *Geological Map of Dubaydib and Jabal Ladghayn area Map Sheets No. 3148-I and 3148-II, 1:50.000*. National Geological Mapping Project. Ministry of Energy and Mineral Resources, Natural Resources Authority, The Hashemite Kingdom of Jordan, Amman.
- Al-Husseini, M.I. 2008. Launch of the Middle East Geologic Time Scale. *GeoArabia*, **13**, 185–188.
- Alsharan, A.S. and Nairn, A.E.M. 2003. *Sedimentary Basins and Petroleum Geology of the Middle East*. Elsevier, 843 pp.
- Amireh, B.S., Schneider, W. and Abed, A.M. 1994. Evolving fluvial-transitional-marine deposition through the Cambrian sequence of Jordan. *Sedimentary Geology*, **89**, 65–90.
- Amireh, B.S., Schneider, W. and Abed, A.M. 2001. Fluvial-shallow marine-glaciofluvial depositional environments of the Ordovician System in Jordan. *Journal of Asian Earth Sciences*, **19**, 45–60.
- Aqrawi, A.A.M., Masri, A. and Horbury, A.D. 2020. Review of Lower-Palaeozoic reservoir prospectivity of western Iraq with reference to Jordan. *Iraqi Geological Journal*, **53**, 24–57.
- Armstrong, H.A., Turner, B.R., Makhlof, I.M., Weedon, G.P., Williams, M., Al Smadi, A. and Abu Salah, A. 2005. Origin, sequence stratigraphy and depositional environment of an upper Ordovician (Hirnantian) deglacial black shale, Jordan. *Palaeogeography, Palaeoclimatology, Palaeoecology*, **220**, 273–289.
- Avigad, D., Kolodner, K., McWilliams, M., Persing, H. and Weissbrod, T. 2003. Origin of northern Gondwana Cambrian sandstone revealed by detrital zircon SHRIMP dating. *Geology*, **31**, 227–230.
- Avigad, D., Sandler, A., Kolodner, K., Stern, R.J., McWilliams, M., Miller, N. and Beyth, M. 2005. Massproduction of Cambro–Ordovician quartz-rich sandstone as a consequence of chemical weathering of Pan-African terranes: Environmental implications. *Earth and Planetary Science Letters*, **240**, 818–826.
- Avigad, D., Morag, N., Abbo, A. and Gerdes, A. 2017. Detrital rutile U-Pb perspective on the origin of the great Cambro-Ordovician sandstone of North Gondwana and its linkage to orogeny. *Gondwana Research*, **51**, 17–29.
- Bandel, K. and Salameh, E.M. 2013. *Geologic Development of Jordan – Evolution of its Rocks and Life*. The Hashemite Kingdom of Jordan National Library 690/3/2013. 277 pp.
- Barrier, E., Machhour, L. and Blaizot, M. 2014. Petroleum Systems of Syria. In: Marlow, L., Kendall, C. and Yose, L. (eds) *Petroleum systems of the Tethyan region*. AAPG Memoir, **106**, 335–378.
- Bender, F. 1968. *Geologie von Jordanien*. Beiträge zur regionalen Geologie der Erde, 7.
- Ben Dor, Y., Harlavan, Y. and Avigad, D. 2018. Provenance of the great Cambrian sandstone succession of northern Gondwana unravelled by strontium, neodymium and lead isotopes of feldspars and clays. *Sedimentology*, **65**, 2595–2620.
- Blanckenhorn, M. 1910. Neues zur Geologie Palästinas und des ägyptischen Niltals. *Zeitschrift der deutschen Geologischen Gesellschaft*, **62**, 405–461.

- Blomenkemper, P., Kerp, H., Abu Hamad, A., DiMichele, W.A. and Bomfleur, B. 2018. A hidden cradle of plant evolution in Permian tropical lowlands. *Science*, **362**, 1414–1416.
- Blomenkemper, P., Bäumer, R., Backer, M., Abu Hamad, A., Wang, J., Kerp, H. and Bomfleur, B. 2021. Bennettitalean Leaves from the Permian of Equatorial Pangea – The Early Radiation of an Iconic Mesozoic Gymnosperm Group. *Frontiers in Earth Sciences*, **9**:652699 <https://doi.org/10.3389/feart.2021.652699>
- Bogdanova, A.A. 1969. *Geology and minerals of foreign counties – Syria*. Nedra Publishing, Leningrad, 215 pp [in Russian].
- Bozdoğan, N. and Erten, T. 1990. Mardin yükselminin yaşı ve etkileri, GD Türkiye. In: *Türkiye 8th Petrol Kongresi Bildirileri*, 207–227 [in Turkish with English abstract].
- Brew, G., Litak, R. and Barazangi, M. 1999. Tectonic Evolution of Northeast Syria: Regional Implications and Hydrocarbon Prospects. *GeoArabia*, **4/3**, 289–318.
- Cocks, L.R.M. and Torsvik, T.H. 2021. Ordovician palaeogeography and climate change. *Gondwana Research*, **100**, 53–72.
- Dean, W.T. 1967. The correlation and trilobite fauna of the Bedinan Formation (Ordovician) in southeastern Turkey. *Bulletin of the British Museum (Natural History), Geology*, **15**, 81–123.
- Dean, W.T. 1973. The Lower Palaeozoic stratigraphy and faunas of the Taurus Mountains near Beyşehir, Turkey. III. The trilobites of the Sobova Formation (Lower Ordovician). *Bulletin of the British Museum of Natural History (Geology)*, **24**, 279–348.
- Dean, W.T. 1975. Cambrian and Ordovician correlation and trilobite distribution in Turkey. *Fossils and Strata*, **5**, 353–73.
- Dean, W.T. 1983. Additional faunal data for the Bedinan Formation (Ordovician) of south-eastern Turkey. *Special Papers in Palaeontology*, **30**, 89–105.
- Dean, W.T. 2006. Cambrian stratigraphy and trilobites of the Samur Dağ area, south of Hakkâri, southeastern Turkey. *Turkish Journal of Earth Sciences*, **15**, 225–257.
- Dean, W.T. and Monod, O. 1970. The Lower Palaeozoic stratigraphy and faunas of the Taurus Mountains near Beyşehir, Turkey. I. Stratigraphy. *Bulletin of the British Museum of Natural History (Geology)*, **19**, 411–426.
- Dean, W.T. and Özgül, N. 1981. Middle Cambrian Trilobite succession in the Çal Tepe Formation at Bağbaşı (Hadim-Konya), central Taurus, Turkey. *Bulletin of the Mineral Research and Exploration Institute of Turkey*, **92**, 1–6.
- Dean, W.T. and Özgül, N. 1994. Cambrian rocks and faunas, Hüdai area, Taurus Mountains, southwestern Turkey. *Bullin de l'Institut des Recherches Scientifiques Naturelle de Belgique - Science de la Terre*, **64**, 5–20.
- Dean, W.T., Monod, O. and Perincek, D. 1981. Correlations of Cambrian and Ordovician rocks in southeastern Turkey. *T. C. Petrol İşleri Genel Müdürlüğü Dergisi*, **25**, 269–291.
- Dean, W.T. and Özgül, N. 1979. Middle Cambrian trilobite succession in the Çaltepe formation at Bağbaşı (Hadim-Konya, Central Taurides, Turkey). *Bulletin of Mineral Research and General Directorate*, **92**, 1–6.

- Dean, W.T., Monod, O. and Günay, Y. 1986. Lower Palaeozoic stratigraphy in the southern and central Amanos Mountains, south Central Turkey. *Geological Magazine*, **123**, 215–226.
- Dean, W.T., Martin, F., Monod, O., Günay, Y., Kozlu, H. and Bozdoğan, N. 1997. Precambrian? and Cambrian stratigraphy of the Penbegli-Tut inlier, southeastern Turkey. *Geological Magazine*, **134**, 37–53.
- Dean, W.T., Uyeno, T.T. and Rikards, R.B. 1999. Ordovician and Silurian stratigraphy and trilobites, Taurus Mountains near Kemer, southwestern Turkey. *Geological Magazine*, **139**, 373–393.
- Demircan, H. and Usta, D. 2012. Early Ordovician trace fossils from the Amanos Mountains (NE Osmaniye, SE Anatolia) - Paleozoic of northern Gondwana and its petroleum potential - a field workshop, Eylül, Kayseri, Türkiye. *Special publication*, **6**, extended abstracts, 93–95.
- Demircan, H., Çoban, M. and Deveci, Ö. 2016a. Cambro-Ordovician trace fossils from the Seydişehir Formation (Amanos Mountains, SE Anatolia, Turkey). In: *Ichnia 2016*, 3–10th May 2016, Idanha-a Nova, Portugal, Abstracts, 112–113.
- Demircan, H., Deveci, Ö. and Çoban, M. 2016b. Extraordinary examples of the outstanding work *Phycodes* beds from the Lower Ordovician in the Armutludere Formation (Amanos Mountains, SE Anatolia, Turkey). In: *Ichnia 2016*, 3–10th May 2016, Idanha-a Nova, Portugal, Abstracts, 114–115.
- Demircan, H., Usta, D., Ateş, Ş. and Beyazpınar, M. 2012. *Cruziana* pavements in the Kümperli region, NW Kahramanmaraş, SE of Turkey. In: *Paleozoic of northern Gondwana and its petroleum potential - a field workshop Eylül*, Kayseri, Turkey, extended abstracts, 100–101.
- Demirtaşlı, E. 1984. Stratigraphy and tectonics of the area between Silifke and Anamur, Central Taurus Mountains. In: *Tekeli, O., Göncüoğlu, M.C. (eds) Geology of the Taurus Belt*, Proceedings of the International Symposium 26–29 September, 1983, Ankara, 110–118.
- Douillet, G., Ghienne, J.-F., Géraud, Y., Abueladas, A., Dirauson, M. and Al-Zoubi, A. 2012. Late Ordovician tunnel valleys in southern Jordan. In: *Huuse, M., Redfern, J., Le Heron, D. P., Dixon, R.J., Moscariello, A. and Craig, J. (eds) Glaciogenic Reservoirs and Hydrocarbon Systems*. Geological Society, London, Special Publications, **368**, 275–292.
- Elicki, O. 2011. First skeletal microfauna from the Cambrian Series 3 of the Jordan Rift Valley (Middle East). *Memoirs of the Association of Australasian Palaeontologists*, **42**, 153–173.
- Elicki, O. and Geyer, G. 2013. The Cambrian Trilobites of Jordan – taxonomy, systematic and stratigraphic significance. *Acta Geologica Polonica*, **63**, 1–56.
- Elicki, O. and Magnus, M. 2021. First report of *Cruziana rouaulti* Lebesconte, 1883 from the Ordovician of Algeria and its stratigraphic and palaeogeographic significance. *Paläontologie, Stratigraphie, Fazies*, **26** (Freiberger Forschungshefte, C 559), 63–76.
- Elicki, O., Schneider, J. and Shinaq, R. 2002. Prominent facies from the Lower/Middle Cambrian of the Dead Sea area (Jordan) and their palaeodepositional significance. *Bulletin de la Société géologique de France*, **173**, 547–552.
- Elicki, O., Linnemann, U., Hofmann, M., Zieger, J., Gärtner, A., Klein, D. and Meischner, T. 2020. Zircon geochronology and provenance of the late Proterozoic and early Palaeozoic of southwestern Jordan. *Zeitschrift der Deutschen Gesellschaft für Geowissenschaften (J. Appl. Reg. Geol.)*, **171**, 105–120.

- Ejel, F. and Abdul Rahim, A.H. 1974. *Geology of Syria*. Damascus, Dar AlFikr, 266 pp [in Arabic].
- Flügel, H. 1963. Graptolithen aus dem mittleren Ordovizium von Nord-Syrien. *Neues Jahrbuch für Geologie und Paläontologie, Abhandlungen*, **118**, 21–26.
- Garfunkel, Z. 2002. Early Paleozoic sediments of NE Africa and Arabia: Products of continental-scale erosion, sediment transport, and deposition. *Israel Journal of Earth Sciences*, **51**, 135–156.
- Gedik, I. 1977. Conodont biostratigraphy of the Middle Taurides. *Geological Bulletin of Turkey*, **20**, 35–48.
- Ghienne, J.-F., Monod, O., Kozlu, H. and Dean, W.T. 2010. Cambrian–Ordovician depositional sequences in the Middle East: A perspective from Turkey. *Earth-Science Reviews*, **101**, 101–146.
- Golonka, J. 2002. Plate-tectonic maps of the Phanerozoic. *SEPM Special Publication*, **72**, 21–75.
- Göncüoğlu, M.C. 1997. Distribution of Lower Paleozoic units in the Alpine terranes of Turkey: paleogeographic constraints. In: *Göncüoğlu, M.C. and Derman, A.S. (eds) Lower Paleozoic evolution in northwest Gondwana*. Turkish Association of Petroleum Geologists, Special Publications, **3**, 13–24.
- Göncüoğlu, M.C. 2010. Introduction to the geology of Turkey: geodynamic evolution of the prealpine and alpine terranes. Ankara, *MTA Monography Series*, 66 pp.
- Göncüoğlu, M.C. and Kozlu, H. 2000. Early Paleozoic evolution of the NW Gondwanaland: data from southern Turkey and surrounding regions. *Gondwana Research*, **3**, 315–324.
- Göncüoğlu, M.C., Göncüoğlu, Y., Kozlu, H. and Kozur, H. 2004. Geological evolution of the Taurides during the Infra-Cambrian to Carboniferous period: a Gondwanan perspective based on new biostratigraphic findings. *Geologica Carpatica*, **55**, 433–447.
- Göncüoğlu, M.C., Elicki, O., Kozlu, H. and Gürsu, S. 2012. Cambrian. In: *Göncüoğlu, M.C. and Bozdoğan, N. (eds) Guidebook Paleozoic of Eastern Taurides*, Turkish Association of Petroleum Geologists, Special Publications, **7**, 22–41 [in Turkish with English abstract].
- Göncüoğlu, Y. and Kozur, H.W. 1999. Upper Cambrian and Lower Ordovician conodonts from the Antalya unit in the Alanya tectonic window, southern Turkey. *Neues Jahrbuch für Geologie und Paläontologie, Monatshefte*, **10**, 593–604.
- Gül, M.A. 1990. Geology and petroleum potential of the Bozyazı-Aydıncık-Pembecik area. *Turkish Petroleum Corporation (TPAO) Report no. 2708*, 29 pp [in Turkish, unpublished].
- Gürsu, S. 2016. A new petrogenetic model for meta-granitic rocks in the central and southern Menderes Massif – W Turkey: Implications for Cadomian crustal evolution within the Pan-African mega-cycle. *Precambrian Research*, **275**, 450–470.
- Gürsu, S., Möller, A., Göncüoğlu, M.C., Köksal, S., Demircan, H., Köksal, F.T., Kozlu, H. and Sunal, G. 2015. Neoproterozoic continental arc volcanism at the northern edge of the Arabian Plate, SE Turkey. *Precambrian Research*, **258**, 208–233.
- Gürsu, S., Möller, A., Usta, D., Köksal, S., Ateş, Ş., Sunkari, E. and Göncüoğlu, M.C. 2017. LA-ICP-MS U-Pb dating of detrital and magmatic zircons of glacial diamictites and pebbles in Late Ordovician sediments of the Taurides and Southeast Anatolian Autochthone Belt, Turkey: Indications for their Arabian-Nubian provenance. *The Journal of Geology*, **125**, 165–202.



- Gürsu, S., Mueller, P.A., Sunkari, E., Köksal, S. and Göncüoğlu, M.C. 2018. Nd, Pb, Hf isotope characteristics and provenance of glacial granitic pebbles from Late Ordovician diamictites in the Taurides, S Turkey. *Gondwana Research*, **54**, 205–216.
- Haude, H. 1975. Stratigraphie und Tektonik des südlichen Sultan Dağ (SW Anatolien). *Zeitschrift der Deutschen Geologischen Gesellschaft*, **123**, 411–421.
- Hirst, J.P.P. and Khatatneh, M. 2019. *Depositional model for the distal Ordovician glaciated margin of Jordan; implications for the reservoir potential of the Risha Formation*. Geological Society, London, Special Publications, **475**: 109–129.
- Hofmann, R., Mángano, M.G., Elicki, O. and Shinaq, R. 2012. Paleoecologic and biostratigraphic significance of trace fossils from shallow- to marginal-marine environments from the Middle Cambrian (stage 5) of Jordan. *Journal of Paleontology*, **86**, 931–955.
- Husseini, M.I. 1990. The Cambro-Ordovician Arabian and adjoining plates: a glacio-eustatic model. *Journal of Petroleum Geology*, **13**, 267–288.
- Keegan, J.B., Rasul, S.M. and Shaheen, Y. 1990. Palynostratigraphy of the Lower Palaeozoic, Cambrian to Silurian, sediments of the Hashemite Kingdom of Jordan. *Review of Palaeobotany and Palynology*, **66**, 167–180.
- Kellogg, H.E. 1960. The geology of the Derik-Mardin area, southeastern Turkey. Rep. Exploration Division, *American Overseas Petroleum Ltd. TPAO Rep. 1367* [unpublished].
- Khalifa, M.A. 2015. The Ediacaran–Cambrian and Ordovician rocks of Al Qasim Province, Saudi Arabia: Facies, depositional history and regional correlation. *Journal of African Earth Sciences*, **109**, 263–282.
- Khalil, B. 1994. *The Geology of the Ad Disa area. Map sheet no. 3149-III*. Ministry of Energy and Mineral Resources, Natural Resources Authority, The Hashemite Kingdom of Jordan, Geological Directorate, Geological Mapping Division, Amman, Bulletin 26, 1–56.
- King, W.B.R. 1923. Cambrian Fossils from the Dead Sea. *Geological Magazine*, **60**, 507–514.
- Koç, H., Ünlügenç, U.C. and Özer, E. 2005. Tectono-stratigraphical investigation of an area between Aydıncık-Bozyazı (Mersin), Central Taurus, Turkey. *Geological Bulletin of Turkey*, **48**, 1–26.
- Kolodner, K., Avigad, D., McWilliams, M., Wooden, J.L., Weissbrod, T. and Feinstein, S. 2006. Provenance of north Gondwana Cambrian–Ordovician sandstone: U–Pb SHRIMP dating of detrital zircons from Israel and Jordan. *Geological Magazine*, **143**, 367–391.
- Konert, G., Afifi, A.M., Al-Hajri, S.A. and Droste, H.J. 2001. Paleozoic Stratigraphy and Hydrocarbon Habitat of the Arabian Plate. *GeoArabia*, **6**, 407–442.
- Kozlu, H. and Ghienne, J.F. 2012. Ordovician. Guide book of Paleozoic of Northern Gondwana and Its Petroleum Potential - A Field Workshop, In: *Göncüoğlu, M.C. and Bozdoğan, N. (eds) Turkish Association of Petroleum Geologists Special Publications*, **7**, 42–60.
- Kozlu, H. and Göncüoğlu, M.C. 1997. Stratigraphy of the infra-Cambrian rock-units in the Eastern Taurides and their correlation with similar units in southern Anatolia. In: *Göncüoğlu, M.C. and Derman, A.S. (eds) Early Palaeozoic Evolution in NW Gondwana*. Turkish Association of Petroleum Geologists, Special Publication, **3**, 50–60.

- Kozlu, H., Göncüoğlu, M.C., Sarmiento, G. and Gül, M.A. 2002. Mid-Ordovician (Late Darriwilian) conodonts from the Southern-Central Taurides, Turkey: geological implications. *Turkish Journal of Earth Sciences*, **11**, 113–126.
- Loydell, D.K. 2007. Graptolites from the Upper Ordovician and Lower Silurian of Jordan. *Special Papers in Palaeontology*, **78**, 1–66.
- Loydell, D.K., Butcher, A., Frýda, J., Lüning, S. and Fowler, M. 2009. Lower Silurian “Hot Shales” in Jordan: a new depositional model. *Journal of Petroleum Geology*, **32**, 261–270.
- Lüning, S., Shahin, Y.M., Loydell, D., Al-Rabi, H.T., Masri, A., Tarawneh, B., and Kolonic, S. 2005. Anatomy of a world-class source rock: Distribution and depositional model of Silurian organic-rich shales in Jordan and implications for hydrocarbon potential. *AAPG Bulletin*, **89**, 1397–1427.
- Makhlouf, I.M., Turner, B.R. and Abed, A.M. 1991. Depositional facies and environments in the Permian Umm Irna Formation, Dead Sea area, Jordan. *Sedimentary Geology*, **73**, 117–139.
- Makhlouf, I.M. 1992. Depositional Environments and Facies in the Dubaydib and Tubeiliyat Sandstones, Southern Desert, Jordan. *Subsurface Geology Bulletin*, **3**, Ministry of Energy and Mineral Resources, Natural Resources Authority, Geological Directorate, Subsurface Geology Division, The Hashemite Kingdom of Jordan, 39 pp.
- Makhlouf, I.M. 2003. Bridged river model and associated facies of lower Cambrian age in South Jordan. *Africa Geoscience Review*, **10**, 289–300.
- Makhlouf, I.M., Abu Hamad, A. and Moh’d, B. 2017. Sedimentology and depositional environments of the Ordovician Umm Sahn Sandstone Formation in southern Jordan. *Arabian Journal of Geoscience*, **10**, 178.
- Mángano, M.G., Buatois, L.A., Hofmann, R., Elicki, O. and Shinaq, R. 2013. Exploring the aftermath of the Cambrian explosion: The evolutionary significance of marginal- to shallow-marine ichnofaunas of Jordan. *Palaeogeography, Palaeoclimatology, Palaeoecology*, **374**, 1–15.
- Martin, F. 1996. Recognition of the acritarch-based “trifidum flora” (Ordovician) in the absence of the eponymous species. *Bulletin de l’Institut Royal des Sciences Naturelles de Belgique, Sciences de la Terre*, **66**, 5–13.
- Masri, A. 1988. *The geology of Halat Ammar and Al Mudawwara, map sheets no. 3248-III and 3248IV*. Ministry of Energy and Mineral Resources, Natural Resources Authority, The Hashemite Kingdom of Jordan, Geological Directorate, Geological Mapping Division, Amman. Bulletin 13, 1–60.
- Masri, A. 2007. *The geology of Dubaydib and Jabal Ladghayn area, map sheets no. 3148-I and 3148II*. Ministry of Energy and Mineral Resources, Natural Resources Authority, The Hashemite Kingdom of Jordan, Geological Directorate, Geological Mapping Division, Amman. Bulletin 65, 1–58.
- Masri, A. 2017. Late Ordovician glacial and glacio-fluvial paleovalley architecture and sedimentation in southeast Jordan and northwest Saudi Arabia. *Arabian Journal of Geoscience*, **10**, 288.
- Masri, A.I., Moumani, K.A., Memesh, A.M. and Dini, S.M. 2014. Lithostratigraphic correlation of Phanerozoic rocks in southern Jordan and northwest Saudi Arabia. Ministry of Energy and Mineral Resources, Amman, Saudi Geological Survey, Jeddah, *Special Publication SGS-SP-2014-1*.

- Meischner, T., Elicki, O., Masri, A., Moumani, K.A., Ali Hussein, M.A. and Maletz, J. 2019. The Darriwilian Hiswah fauna of western Gondwana (Jordan): Biostratigraphy, palaeogeography and palaeoecology. *Geobios*, **57**, 53–76.
- Meischner, T., Elicki, O., Masri, A., Moumani, K.A. and Ali Hussein, M.A. 2020. Ordovician trace fossils from southern Jordan with particular consideration to the *Cruziana rugosa* group: Taxonomy, stratigraphy and trans-regional correlation throughout the Middle East and northern Africa. *Journal of African Earth Sciences*, **164**, 103595, 27 pp.
- Monod, O. 1967. Présence d'une faune ordovicienne dans les schistes de Seydişehir, à la base des calcaires du Taurus occidental. *Bulletin of the Mineral Resource and Exploration Institute (MTA, Ankara)*, **69**, 78–89.
- Monod, O., Kozlu, H., Ghienne, J.-F., Dean, W.T., Günay, Y., Le Hérisse, A., Paris, F. and Robardet, M. 2003. Late Ordovician glaciation in southern Turkey. *Terra Nova*, **15**, 249–257.
- Moumani, K.A., 2003. *The geology of Jabal Umm Sahm and Bir As Saladih area, map sheets no. 3148-IV and 3148-III*. Ministry of Energy and Mineral Resources, Natural Resources Authority, The Hashemite Kingdom of Jordan, Geological Directorate, Geological Mapping Division, Amman, Bulletin 55, 1–47.
- Mustafa, H. 2003. A late Permian Cathaysian flora from the Dead Sea area, Jordan. *Neues Jahrbuch für Geologie und Paläontologie, Monatshefte*, **1**, 35–49.
- Nehling, P., Genna, A. and Asfirane, F. 2002. A review of the Pan-African evolution of the Arabian Shield. *GeoArabia*, **7**, 103–124.
- Oktay, B. and Wellman, C.H. 2019. Palynological analysis of Upper Ordovician to Lower Silurian sediments from the Diyarbakir Basin, southeastern Turkey. *Review of Paleobotany and Palynology*, **263**, 28–46.
- Özgül, N. and Gedik, I. 1973. New data on the stratigraphy and the conodont faunas of Çaltepe limestone and Seydişehir formation Lower Paleozoic of Central Taurus range. *Bulletin of the Geological Society of Turkey*, **16**, 39–52.
- Özgül, N. and Kozlu, H. 2002. Kozan–Feke (Doğu Toroslar) yöresinin stratigrafisi ve yapısal konumu ile ilgili bulgular. *Türkiye Petrol Jeologları Dergi Bülteni*, **14**, 1–36 [in Turkish with English abstract].
- Özgül, N., Metin, S. and Dean, W.T. 1972. Lower Palaeozoic stratigraphy and faunas of the eastern Taurus Mountains in the Tufanbeyli region, southern Turkey. *Bulletin of the Mineral Resource and Exploration Institute (MTA, Ankara)*, **79**, 9–16.
- Özgül, N., Metin, S., Erdoğan, B., Goğer, E., Bingöl, I. and Baydar, O. 1973. Cambrian-Tertiary rocks of the Tufanbeyli region, eastern Taurus, Turkey. *Bulletin of the Geological Society of Turkey*, **1**, 82–100 [in Turkish with English abstract].
- Özgül, N., Bölükbaşı, S., Alkan, H., Öztas, Y. and Korucu, M. 1991. Tectonostratigraphic units of the Lake District, Western Taurides, Tectonics and hydrocarbon potential of Anatolia and surrounding regions. In: *Turgut, S. (ed) Proceedings of the O. Sungurlu Symposium*, O. Sungurlu Foundation, Ankara, 213–237.
- Paris, F., Le Hérisse, A., Monod, O., Kozlu, H., Ghienne, J.-F., Dean, W.T., Vecoli, M. and Günay, Y. 2007. Ordovician chitinozoans and acritarchs from southern and southeastern Turkey. *Revue de Micropaléontologie*, **50**, 81–107.

- Picard, L. 1942. New Cambrian fossils and new Paleozoic problematica from the Dead Sea and Arabia. *Bulletin of the Department of Geology*, Hebrew University, **4**, 1–18.
- Powell, J.H. 1989. Stratigraphy and sedimentation of the Phanerozoic rocks in Central and South Jordan – part A, Ram and Khreim Groups. Ministry of Energy and Mineral Resources, Natural Resources Authority, The Hashemite Kingdom of Jordan, Geological Directorate, Geological Mapping Division, Amman, *Bulletin* **11**, 1–72.
- Powell, J.H., Moh'd, B.K. and Masri, A. 1994. Late Ordovician–Early Silurian glaciofluvial deposits in palaeovalleys in South Jordan. *Sedimentary Geology*, **89**, 303–314.
- Quennel, A.M. 1951. The geology and mineral resources of the (former) Trans-Jordan. *Colonial Geology and Mineral Resources*, **2**, 85–115.
- Richter, R. and Richter, E. 1941. Das Kambrium am Toten Meer und die älteste Tethys. *Abhandlungen der Senckenbergischen Naturforschenden Gesellschaft*, **460**, 1–50.
- Ruban, D.A., Al-Husseini, M.I. and Iwasaki, Y. 2007. Review of Middle East Paleozoic plate tectonics. *GeoArabia*, **12**, 35–56.
- Rushton, A.W.A. and Powell, J.H. 1998. A review of the stratigraphy and trilobite faunas from Cambrian Burj Formation in Jordan. *Bulletin of the Natural History Museum of London (Geology)*, **54**, 131–146.
- Sarmiento, G.N., Gül, M.A., Kozlu, H. and Göncüoğlu, M.C. 1999. Darriwilian conodonts from the Taurus Mountains, southern Turkey. 8th ISOS, *Acta Universitatis Carolinae, Geologica*, Praha, **41**, 37–40.
- Sarmiento, G.N., Göncüoğlu, M.C. and Göncüoğlu, Y. 2003. Early Darriwilian conodonts from the Sobova Formation in the Eastern and Western Taurides, Southern Turkey. In: *Albanesi, G.L., Beresi, M.S. and Peralta, S.H. (eds), Ordovician from the Andes*, 17, 143–144.
- Sawaf, T., Al-Saad, D., Gebran, A., Barazangi, M., Best, J., and Chaimove, T. 1993. Stratigraphy and structure of Eastern Syria across the Euphrates depression. *Tectonophysics*, **220**, 267–281.
- Schneider, W., Amireh, B.S. and Abed, A.M. 2007. Sequence analysis of the Early Paleozoic sedimentary systems of Jordan. *Zeitschrift der deutschen Gesellschaft für Geowissenschaften*, **158**, 225–247.
- Scotese, C.R. 2001. *Atlas of Earth History*. PALEOMAP Project, Arlington, Texas, 52 pp.
- Scotese, C.R., 2014. *Atlas of Silurian and Middle-Late Ordovician paleogeographic maps (Mollweide projection)*, maps 73-80, Volume **5**, The Early Paleozoic, PALEOMAP Atlas for ArcGIS, PALEOMAP Project, Evanston, IL.
- Segev, A. 1984. Lithostratigraphy and palaeogeography of the marine Cambrian sequence in southern Israel and southwestern Jordan. *Israel Journal Earth Sciences*, **33**, 26–33.
- Selley, R.C. 1970. Ichnology of Palaeozoic sandstones in the Southern Desert of Jordan: a study of trace fossils in their sedimentologic context. In: *Crimes, T.P. and Harper, J.C. (eds) Trace fossils*, Seel House Press, Liverpool, 477–488.
- Sharland, P.R., Archer, R., Casey, D.M., Davies, R.B., Hall, S.H., Heward, A.P., Horbury, A.D. and Simmons, M.D. 2001. *Arabian Plate Sequence Stratigraphy*. GeoArabia Special Publication 2, 371 pp.

- Shinaq, R. and Bandel, K. 1992. Microfacies of Cambrian limestones in Jordan. *Facies*, **27**, 52–57.
- Shinaq, R. and Elicki, O. 2007. The Cambrian sedimentary succession from Wadi Zerqa Ma'in (northeastern Dead Sea area, Jordan): lithology and fossil content. *Neues Jahrbuch für Geologie und Paläontologie, Abhandlungen*, **243**, 255–272.
- Stephan, T., Kroner, U. and Romer, R.L. 2019. The pre-orogenic detrital zircon record of the PeriGondwanan crust. *Geological Magazine*, **156**, 281–307.
- Stephenson, M.H. and Powell, J.H. 2013. Palynology and alluvial architecture in the Permian Umm Irna Formation, Dead Sea, Jordan. *GeoArabia*, **18**, 17–60.
- Sudbury, M. 1957. *Diplograptus spinulosus* sp. nov., from the Ordovician of Syria. *Geological Magazine*, **94**, 503–506.
- Teimeh, M., Taaaani, Y., Abu Lihie, O. and Abu Saaaad, L. 1990. A study of the Palaeozoic formations of Jordan at outcrop and in the subsurface including measured sections and regional isopach maps. Natural Resources Authority, Geology Directorate, *Geological Mapping Division Subsurface Geology Bulletin*, **1**, 1–72.
- Torsvik, T.H., Cocks and L.R.M. 2013. New global palaeogeographical reconstruction for the early Palaeozoic and their generation. In: Harper, D.A.T., Servais, T. (eds) *Early Palaeozoic Biogeography and Palaeogeography*, **38**, Geological Society of London, Memoirs, 5–24.
- Torsvik, T.H., Cocks and L.R.M. 2017. *Earth History and Palaeogeography*. Cambridge University Press, 317 pp.
- Turner, B.R., Makhlof, I.M. and Armstrong, H.A. 2005. Late Ordovician (Ashgillian) glacial deposits in southern Jordan. *Sedimentary Geology*, **181**, 73–91.
- Turner, B.R., Armstrong, H.A., Wilson, C.R. and Makhlof, I.M. 2012. High frequency eustatic sealevel changes during the Middle to early Late Ordovician of southern Jordan: Indirect evidence for a Darriwilian Ice Age in Gondwana. *Sedimentary Geology*, **251–252**, 34–48.
- Uhl, D., Abu Hamad, A., Kerp, H. and Bandel, K. 2007. Evidence for palaeo-wildfire in the Late Permian palaeotropics – charcoalified wood from the Um Irna Formation of Jordan. *Review of Palaeobotany and Palynology*, **144**, 221–230.
- Usta, D., Ateş, Ş., Beyazpirinç, M., Kanar, F., Yıldız, H., Uçar, L., Akça, İ., Tufan, E. and Örtlek, A.T. 2015. New data on the stratigraphy of the Central and Northern Amanous Mountains (OsmaniyeGaziantep-K.Maraş). *Bulletin of Turkish Association Petroleum Geologist - TAPG*, **27**, 57–98.
- Weber, H. 1964. Ergebnisse erdölgeologischer Aufschlussarbeiten der DEA in Nordost-Syrien. T. II: Geophysikalische Untersuchungen und Tiefbohrungen in der Haute Djesireh. *Erdöl & Kohle, Ergas, Petrochemie* (Hamburg), **16**, 669–682.
- Weissbrod, T. 2004. A reassessment of the Naqus Formation in Sinai and the Eastern Desert of Egypt: Stratigraphic and tectonic implications. *Israel Journal of Earth Sciences*, **53**, 87–97.