



HAL
open science

Bioaccumulation of trace metal elements and biomarker responses in caged juvenile flounder at a polluted site: Effects of fish density and time exposure

Mamadou Diop, Jérôme Couteau, Anne Bado-Nilles, Eric Tavernier, Baghdad Ouddane, Jeremy Denis, Gwendoline Duong, François Gevaert, Sebastien Monchy, Jean Laroche, et al.

► To cite this version:

Mamadou Diop, Jérôme Couteau, Anne Bado-Nilles, Eric Tavernier, Baghdad Ouddane, et al.. Bioaccumulation of trace metal elements and biomarker responses in caged juvenile flounder at a polluted site: Effects of fish density and time exposure. *Marine Pollution Bulletin*, 2022, 185 (Part A), pp.114289. 10.1016/j.marpolbul.2022.114289 . hal-03854496

HAL Id: hal-03854496

<https://hal.science/hal-03854496v1>

Submitted on 18 Nov 2022

HAL is a multi-disciplinary open access archive for the deposit and dissemination of scientific research documents, whether they are published or not. The documents may come from teaching and research institutions in France or abroad, or from public or private research centers.

L'archive ouverte pluridisciplinaire **HAL**, est destinée au dépôt et à la diffusion de documents scientifiques de niveau recherche, publiés ou non, émanant des établissements d'enseignement et de recherche français ou étrangers, des laboratoires publics ou privés.

Bioaccumulation of trace metal elements and biomarker responses in caged juvenile flounder at a polluted site: effects of fish density and time exposure.

Mamadou Diop¹, Jérôme Couteau², Anne Bado-Nilles³, Eric Tavernier¹, Baghdad Ouddane⁵, Jeremy Denis¹, Gwendoline Duong¹, François Gevaert¹, Sebastien Monchy¹, Jean Laroche⁴, Rachid Amara¹.

- 1) Université du Littoral Côte d'Opale, CNRS, IRD, Univ. Lille, UMR 8187, LOG, Laboratoire d'Océanologie et de Géosciences, 32 Avenue Foch, Wimereux, France
- 2) TOXEM - Le Havre, France
- 3) Institut National de l'Environnement Industriel et des Risques (INERIS), UMR-I 02 SEBIO, Parc Technologique Alata, BP 2, 60550 Verneuil-en-Halatte, France
- 4) Université de Bretagne Occidentale, LEMAR UMR 6539 CNRS/UBO/IRD/Ifremer, Institut Universitaire Européen de la Mer, Place Nicolas Copernic, 29280 Plouzané, France
- 5) Univ. Lille, CNRS LASIRE UMR 8516, Equipe Physico-chimie de l'Environnement, F-59000 Lille, France

Abstract

This study investigates the effect of fish density and exposure duration on trace metal elements (TME) bioaccumulation and several biomarkers response. Juvenile flounders were caged at low, medium and high densities and exposed during 15 or 30 days in the Seine estuary. The concentrations of the TME measured in the muscle of the caged fish were all in agreement with their bioavailability percentage in the sediments. Higher concentrations of TME were found in flounders' muscle exposed for 15 days compared with those caged for 30 days. For the same exposure time, the density of fish had no effect on the accumulation of the TME in the flounders' muscle. Biomarkers responses varied according to density and duration of exposure. Special care should be taken in their interpretation. We underline that for an optimal assessment of TME pollution in the field, 15 days with low densities of fish per cage are sufficient.

Key words: flounder density, trace metal element, caging duration, biomonitoring, fitness indices, biomarkers of damage, innate immune response,

In recent decades, many legislative tools have been put in place to limit pollution and improve the ecological and chemical homeostasis of water bodies. In parallel, many tools have been proposed to monitor the quality of aquatic ecosystems. Often, the ecological quality has been assessed through studies of the biological communities (i.e. benthic invertebrate fauna, fish fauna), while chemical quality has been defined by monitoring the 45 “priority chemicals” in the Water Framework Directive (WFD). However, the first of these approaches doesn’t address the origin of the pollution, while the second is not exhaustive enough. These shortcomings have prompted increasing interest in multi-biomarker approaches for environmental monitoring programs (Catteau et al., 2022; Sanchez et al., 2007). In particular, both passive and active biomonitoring methods have been proposed. The first approach concerned the determination of pollutants and their effect in native individuals with their own life history traits and specific spatial distributions in the wild. Many authors have proposed an alternative, active biomonitoring approach which is based on the caging of selected sentinel species in the area to be studied. The reduction of inter-individual variability and capacity to precisely control the location and duration of exposure could give more realistic results in studies of bioavailability, bioaccumulation and biological effects of contaminants on fish (Oikari, 2006).

One of the major constraints of caging that can affect growth and development of caged fish is the limitation of access to food (Jørgensen et al., 1999), which can also influence exposure to chemical contaminants through food compared with fish *in natura*. In addition to having effects upon fish’s exposure to contaminants, caging can lead to a decrease in fitness indices (Kerambrun et al., 2012) which even result in the death of caged organisms. Fitness indices of larvae and juvenile fish such as specific growth rate, otolith increments; morphometric indices (Fulton’s K); lipid and protein reserves have therefore been used to assess the health status of individuals and populations, as well as the habitat quality (Amara et al., 2007). But a drop in these fitness indices linked to a lack of food can confound interpretation of the effects of the metal trace elements bioaccumulation, for example, as well as other biomarkers which are considered to be responses to the concentration of these elements in the caged organisms.

To overcome the lack of food for caged fish, we tested for the first time, cages fitted with a device that could allow the fixation and development of prey.

While high fish densities in cages can have adverse effects on fitness and immunological biomarkers (Le Guernic et al., 2016), the effect of fish density and exposure duration on the accumulation of metal trace elements in fish are not fully understood.

For caging, a large number of fish species can be captured in a weakly contaminated natural habitat before being caged at the study site. The European flounder (*Platichthys flesus*) is one of

the most-used sentinel species for the assessment of chemical contamination in aquatic environments (Dupuy et al., 2014), and is recommended by OSPAR for the biomonitoring of marine environment (Burgeot et al., 2017).

The aims of this study, was to analyse the effect of fish density and exposure duration (15 and 30 days) on (i) the accumulation of TME (Ag, Ba, Cd, Cu, Co, Cr, Hg, Pb, Ni, V, Fe, and Sr) in juvenile flounder muscles, ii) the response of fitness indices (condition index, lipids and protein reserves), and iii) health status biomarkers such as the rate of DNA damage, the detoxification enzyme (EROD), the responses of the nervous system (acetylcholinesterase activity – AChE) and the immune system (leucocyte distribution, apoptosis, necrosis, phagocytose activity, respiratory burst and lysosomal presence).

The 70 juvenile flounders (size = 10.1 ± 1.0 cm; weight = 14.2 ± 4.8 g) were caught in the Canche estuary (France), a small estuary where anthropogenic pressures are relatively low (Amara et al., 2009). Before being deployed in the caged site, they were acclimatized for 15 days in a 500-L aquarium supplied with an open seawater circuit ($16 \pm 0,15^\circ\text{C}$) in the Mareis aquarium center (<http://www.mareis.fr/>). Temperature and salinity of the acclimation tank were similar to those of the study site where the cages were to be deployed. During acclimatization, fish were fed daily (3% of their body weight) with live prey (Mysidacea, shrimp and artemia). One day before the caging experiment, 10 fish were dissected to obtain control values (T0).

The study site was located in the Seine estuary, chronically polluted, near Rouen ($49^\circ 22.995' \text{N}$; $01^\circ 00.676' \text{E}$). Water quality in Rouen is impacted by pollutant inputs to the river system and reflects the anthropogenic pressures on the watershed. Besides the Parisian metropolis (10 million habitants) which represents an important contribution of upstream contaminants in the Seine River, Rouen (400000 inhabitants) is the second largest metropolis on the Seine River before Le Havre at its mouth (250000 inhabitants) (Romero et al., 2016). The water quality of the Seine in Rouen is also impacted by the two large industrial areas of Elbeuf and Rouen, as well as the intensive agriculture in the river basin (Fisson et al 2014). These activities are all potential sources of contaminants reaching the estuary through precipitation and run-off.

The sediments from the upstream of the Seine River are known to be heavily contaminated by metal trace element (Borcier et al., 2019, Hamzeh et al., 2016). In order to confirm the state of contamination by metal trace elements in the environment, and to assess their bioaccumulation in flounders, samples of sediments were taken at the beginning of the experiment with a grab on the first fifteen centimeters of the caging site. The samples were then stored in plastic bags and frozen at -20°C until analysis.

Salinity, pH, dissolved oxygen and temperature of the water column were recorded at the beginning of the experiment (day 0), at day 15 and at the end (day 30). Water salinity (0,1 PSU), pH (8.5) and dissolved oxygen (7.8mg/L) were relatively similar at the beginning, at D15 and at D30. However, the water temperature decreased from T0 to D30 (18.5°C, 16.3°C and 15.5°C for D0, D15 and D30, respectively).

The cages used in this study were made of plastic: they were 1m long, 0.6m wide and 0.6m in height (volume = 0.36m³). Their 15mm mesh size facilitated the circulation of water and allowed the entry of fish prey. To protect the fish against strong movements of water, Plexiglas plates were attached to the base of the four sides of each cage. A PVC (polyvinyl chloride) pipe, bent at both ends and perforated to facilitate the circulation of water tube, was also added to serves as a refuge for fish against strong currents. Finally, in order to facilitate the fixation and the development of potential fish prey, a small artificial reef made up of oyster shells was also attached inside the cage.

The 24th September 2018, 60 fish were randomly distributed in two batches of three cages containing, respectively: 5 (density = 0.173±0.011g/L), 10 (density = 0.373±0.002g/L) and 15 fish (density = 0.617±0.068g/L) corresponding respectively to low, medium and high densities. Then, the cages were fixed to the bottom at about 6 m depth using two 6 kg flat anchors on each side and they were placed separately. In order to study the effect of the exposure duration, the first batch of the three cages were exposed during 15 days and the second batch during 30 days. At the end of each exposure duration, fish were kept alive during transport to the laboratory where they were weighed and measured to calculate their growth and condition indices. Blood samples were taken in heparinized tubes and then quickly frozen in liquid nitrogen before being stored at -80°C for genotoxic analysis. The stomach track was removed and conserve in an Eppendorf tube and stored at -20°C. Brain, liver and two portions of muscles (an anterior and a posterior, intended respectively for the analysis of protein and for lipid analysis) were frozen at -80 °C. The spleen was recovered for the immune system analyses. The remaining muscles were frozen at -20°C for contaminants analysis.

A total of sixteen trace elements (Ag, Al, Ba, Cd, Cu, Cr, Fe, Hg, Mo, Mn, Ni, Pb, Sr, Ti, V and Zn) were analyzed in sediments and in the muscles of flounders by inductively coupled plasma mass spectrometry (ICP-MS, Varian 820-MS). The bioavailable and total metal trace elements fractions in the sediments and the total metal trace element in fish muscle samples were analyzed according to the protocol described by Ouddane et al. (1999) modified from Huerta-Diaz and Morse (1990) for the determination of the bioavailable fraction.

To see if the fish fed well during caging, the digestive tracts of the fish were taken and the stomach contents analyzed. To estimate the general well-being of the fish, the Fulton morphometric index (K) was calculated with the formula: $K = 100 \times (\text{weight}(\text{mg}) / \text{length}(\text{mm})^3)$. Proteins were measured in the muscles of the anterior ventral side of the flounders according to the procedure described by Clemmesen (1989) slightly modified. Total lipids were extracted from the lyophilized dorsal side muscle of flounders according to the method described by Folch et al., (1957). Lipid classes were determined by chromatography following the procedure described by Di Pane et al. (2019).

Genotoxic damage was evaluated using the Comet assay following the methodology specified in (Vandghanoni and Eskandani, 2011; Singh et al., 1988). The results were expressed as a percentage of DNA in the comet tail (%DNA tail) using HCS Studio® software (Thermo Scientific).

The measurement of the EROD activity in the livers of flounders was carried out according to the XP ISO/TS 23893-2 protocol. The calculation of the EROD activity (expressed in picomoles per minute per milligram of protein) was carried out according to Eggens and Galgani (1992). For acetylcholinesterase (AChE) activity were determined in the brain tissue by proceeding the protocol described by (Bocquené and Galgani, 1998).

Immunological parameters were measured in splenic leucocytes. Leucocyte sub-populations (lymphocyte and granulocyte-macrophage) were identified and characterized by calculating the percentages of each sub-population (Bado-Nilles et al., 2014). The cellular mortality percentages were evaluated by fluorimetry in order to obtain cellular fluorescence parameters indicating respectively apoptotic (FL1, green fluorescence) and necrotic (FL3, red fluorescence) cells (Bado-Nilles et al., 2014). Leucocyte respiratory burst measurement (stimulation index) was based on the technique described by Chilmonczyk and Monge (1999), optimized for the flounder. Intracellular lysosomal presence was determined according to Bado-Nilles et al., (2013) the phagocytosis activity (capacity and efficacy of phagocytosis) was evaluated according to Gagnaire et al., 2004).

Statistic tests were performed by Xlstat software Edinsoft. Normal distribution of the dataset was tested with the Shapiro-Wilks test ($p < 0.05$), while homogeneity of the variances was evaluated with Levene's test ($p < 0.05$). Parametric datasets were analyzed with a one-way ANOVA, followed by Tukey HSD as a post-hoc test. Non-parametric data was further processed with a Kruskal-Wallis test ($p < 0.05$) and a Dunn test for pairwise comparisons. A principal component analysis (PCA) was used to evaluate the relationships between the chemical contaminants in fish depending on their density per cage and time exposure. The Integrative Biological Response as

described by Sanchez *et al.* (2013) was used to evaluate the relationships between biomarkers in fish depending on their density per cage and time exposure.

At D15 all cages were recovered, but at D30 the cage containing 10 fish (C5) was not recoverable. The percentage of fish recovery was 100%, 90%, 53.3%, respectively for the low, the medium and the high density exposed during 15 days, and 80% et 93.3% for the low and the high density exposed during 30 days.

The results of the contamination of TME in the fine fraction (<63 µm) of the sediments are shown in table 1. Results of the bioavailable and total fractions of the trace elements expressed in mg/kg dry weight (dw) showed varying contents. Fe was the major element in sediments. It was followed respectively by Ti, Mn, Sr, Zn, and Ba. In contrast, Mo, Cd and Hg showed the lowest concentrations in the sediments from Rouen.

The concentration of Cu, Pb and Zn measured in the sediments in this study were comparable to those previously reported by Hamzeh *et al.* (2013) at the same site. However, higher concentrations of total Cd and Hg were found in the present study compared with those measured by these authors. This indicates that there is a continuous enrichment of these two trace elements at the Rouen site. When compared with other sites in the Seine River, the concentrations of Cd, Cu, Hg, Pb, Ni and Zn in sediments at the Rouen site were lower than those measured upstream at Poses and Oissel, but higher than those recorded downstream at Duclair and Caudbec (Hamzeh *et al.*, 2016). The concentrations of Ag, Ba, Cd, Co, Cr, Hg, Mo, Ni, V, and Mn recorded in this study were all higher than those recently reported for the sediments at the mouth of the Seine estuary (Borcier *et al.*, 2019). When compared with others rivers in France, the concentration of Cd, Cu, Zn and Pb measured in Rouen's sediments were higher than those recorded in the Loire sediment for Cd, Cu, Zn and Pb (Dhivert *et al.*, 2016) and in the Gironde River (Larrose *et al.*, 2010). Among the eight trace elements identified as priority contaminants in aquatic systems (As, Cd, Cr, Cu, Hg, Ni, Pb and Zn), Fisson *et al.* (2014) underlined that Cd, Cu, Hg, Pb and Zn are the elements found at highest concentrations in the sediments of the Seine. The concentrations of these elements measured in this study were greater, or of the same magnitude, as those found in other polluted Rivers in Europe (Esser *et al.*, 2020). This high TME contamination level in sediments at Rouen were linked with different sources such as industrial and agricultural runoff, and urban waste waters (Fisson, 2014).

The accumulation of TME in living organisms depends strongly upon their bioavailability in the environment. The calculation of the percentage of bioavailable TME in the sediments (table 1) were highest for Sr. It was followed by Mn, Cu, Pb, Ba, Cd, Ni, Co, Zn, Hg and Fe respectively.

In contrast, Al, Mo and Ag were the least bioavailable. Links between metal concentrations in fish and in sediments are also mainly related to the bioavailability of these metal trace elements in sediments. The concentration of TME in the muscle of caged fish compared to the control groups show that regardless of the density and the time of exposure, the average concentrations of Ag(0.13 ± 0.06 mg/kg), Ba(0.53 ± 0.17 mg/kg), Co(0.02 ± 0.0001 mg/kg), Cu(1.95 ± 0.18 mg/kg), Hg (0.55 ± 0.20 mg/kg), Mn (2.00 ± 0.42 mg/kg), Ni(0.11 ± 0.02 mg/kg), Sr(14.43 ± 1.62 mg/kg), Ti(0.10 ± 0.04 mg/kg) and Zn(42.3 ± 0.42 mg/kg) were all significantly higher than those recorded in the muscles of the control group (Kruskal Wallis test, $p < 0.05$) (table 2). These results indicate that these elements are bioaccumulated by the juvenile fish during the caging exposure. Excepted for Fe and Pb, all the elements with a bioavailability percentage greater than 60% in the sediments were found in the muscles of caged fish at concentrations higher than those in the control group (except Ag, with 34% of bioavailability). After zinc, strontium was the element found at highest concentrations in the caged fishes' muscles. The ratio of concentration of the TME in muscles of caged fish to that of controls shows that Sr, the most bioavailable element in the sediments, was also found at the highest concentrations in caged fish muscles. The concentrations of the TME measured in the muscle of the caged fish were all in agreement with their bioavailability percentage in the sediments (except Fe and Pb). Caged organisms, especially the juvenile flounders, thus seem to be an excellent model for monitoring TME pollution in the aquatic environment.

If the effectiveness of caging on the biomonitoring of aquatic environments has been demonstrated and confirmed in this present study, the effect of the caging duration and the fish density per cage on the accumulation of contaminants remains to be fully characterized. The same is also true of the response of organisms to their environment (as measured by various biomarkers), both as a function of the exposure time and the density of fish per cage.

Results of the accumulation of the TME measured in the muscles of the caged flounders (table 2) show that fish density do not have any effect on TME accumulation (Kruskal Wallis, $p < 0.05$). For the same time of exposure, and for all elements, no difference was observed in the accumulation of the TME among the low, medium or high fish densities and this held true for both exposure times (table 2). Unlike density, time exposure seems to affect trace metal elements concentrations by flounders. Figure 1 shows the evolution of the average metal concentrations calculated by considering all the D15 flounders on the one hand, and all the D30 flounders on the other hand, compared with controls. Among the elements accumulated in the flounders (table 2), the highest contents of Ag, Ti, Hg, Mn and Zn were measured in the muscles of the flounders exposed during 15 days. A significant difference (ANOVA, $p < 0.01$) was observed for Ag, Ti,

Hg and Zn measured on D15 compared to those measured on D30. Only Ni was found at greater concentrations in the flounders of D30 compared with those at D15 and no difference was observed for Cu and Mn.

The discriminant function analysis (figure2) of the TME concentration in fish shows that the first axis F1 (explaining 88.24% of the total variance) distinguishes fish according to their time of exposure. On the right side, all the fish exposed for 15 days were grouped, and on the left side all fish exposed for 30 days were grouped with the control fish. Elements like Cu, Mn and Zn are essential for fish metabolism, while non-essential metals such as Hg, Cd and Pb are toxic even at low concentrations. While so-called essential elements can produce toxic effects at high concentrations, their concentrations in fish tend to be auto-regulated by the organism, unlike non-essential metals (Fernandes et al., 2007). The toxicological effects of inorganic compounds depend on the exposure and bioavailability of the elements, absorption, metabolism and their intracellular concentrations (Fent, 2004). The decline in concentrations of Cu, Mn and Zn between D15 and D30, could be due to the fact that at D30, flounders had enough time to integrate their environment and developed mechanisms to regulate these contaminants.

Hg and Ag have no known biological role and are not biodegradable; thus, they tend to accumulate in organisms. Their higher concentrations at D15 compared with D30 is similar to other reports of Hg in fish in several other studies (Schlenk et al., 1995; Palace et al., 2005). Schoyen et al, (2017) found similar variations of this element in caged mussels for 34, 104 and 181 days. Such temporal variation in TME bioaccumulation in fish requires additional studies for a better understanding of the relationships between their rates of accumulation and elimination, which is beyond the scope of this study.

Exposure of fish in polluted environments can have negative consequences on their growth, their physiology and can even cause damage to their DNA.

We found that fish density can have various effects on the responses of physiological and innate immune biomarkers or fish stomach contents. For the same time of exposure, the Fulton K index, protein contents, the TAG/Chol ratio, the average number of prey and the average stomach filling decreased when the density of fish per cage increased (figure 3). A highly significant difference (Kruskal Wallis, $p < 0.01$) was observed between the Fulton condition index, the TAG/Chol ratio of fish at low density compared with those at medium density exposed during 15 days. Similarly, a highly significantly difference (Kruskal Wallis, $p < 0.01$) was observed between the TAG/Chol ratios, the protein contents of fish at low density compared with those at high density exposed during 30 days. This was correlated with the results of stomach contents (figure 3). Further, the

lower the number of fishes per cage, the greater the number of prey in fish stomach which led to a greater availability of food and hence a better nutritional status for organisms. For the same time of exposure, changes observed in fish fitness seem not to be influenced by a response related to TME accumulation but by a variation of the caged fish density. A decrease in physiological biomarkers was observed in *Solea senegalensis* caged at high density (Andrade et al., 2015). Results of the immune biomarker response (figure 5), showed no difference between flounders caged with low, medium or high density for the same time of exposure. However, when the density increased, the phagocytosis efficiency decreased. In contrary, there was a trend for an increase in the percentage of granulocytes-macrophages, leucocyte necrosis, the oxidative burst and the presence of lysosomes in fish for the same time of exposure when the density increased, though this was not statistically significant.

Unlike the physiological parameters, the rates of DNA damage, the EROD activities and AchE (figure4) did not show, for the same exposure duration, any significant differences between the flounders exposed at different densities (Kruskal Wallis, $p < 0.01$).

Many studies have underlined the induction of stress biomarkers such as lactate and cortisol (Urbinati et al., 2004) or ROS (Le Guernic et al., 2016) when fish are caged at high density. In our study, the absence of such effect were certainly related to the fact that there was no difference on the accumulation of TME between fish exposed at different densities for the same duration. However, like fitness indices, a destabilization of the immune response where observed with increasing density in this study. Other workers have also reported an increase in leucocytes, necrosis and apoptosis when the fish density increased (Le Guernic et al., 2016). Similarly, Vazzana et al. (2002) underlined that a high fish density can suppress immune capacities such as respiratory burst and phagocytosis. In our study, an increase of juvenile' flounders density had negative effects on their immune capacities. Granulocytes-macrophages, leucocyte necrosis, the oxidative burst and the presence of lysosomes in fish for the same time of exposure increased when the density increased. The phagocytosis capacity tends to decrease with increasing density of fish. To maintain an optimal physiological status of the organisms during ecotoxicological evaluations, the number of fishes per cage should be limited even if this means increasing the number of cages for statistical treatments. To maintain animal welfare and to achieve an optimal evaluation of TME pollution, as described in the European Directive 2010/63EU, our result suggests that fish caged at low density ($0.173 \pm 0.011 \text{g/L}$) would be sufficient to assess pollution by trace elements.

As showed above, the accumulation of the TME is not density dependent but depend of the exposure duration. It was more important in fish caged during 15 days compared to those caged

for 30 days. To investigate the effect of TME accumulation in juvenile flounders as a function of the caging duration, the Integrative Biological Response (IBR) developed by Beliaeff and Burgeot (2002) and adapted by Sanchez et al. (2013) was calculated. The values of the IBR (figure 6) calculated for all cages with different densities and both durations of exposure compared with controls, was 2.76, 2.88 and 2.77 for fish in low, medium and high density cages exposed for 15 days, and 1.19 and 1.88 for fish in low and high density cages exposed for 30 days. Results of the IBR showed that flounders caged during 15 days were characterised by a decrease in the TAG/Chol ratio, in protein contents and in the capacity of phagocytosis, an induction of AChE, an increase in granulocytes, in cell necrosis and in respiratory burst compared with those of D30. This later were characterized by an increase in the ratio of TAG/Chol and in protein content, an important induction of EROD, an inhibition of AChE, and an elevated presence of lysosomes compared with fish exposed for 15 days. At equal density, the ratio TAG/Chol and the protein contents were significantly higher (Anova, $p < 0.05$) in fish caged during 30 days compared to those caged during 15 days (figure 3). The results for the lipid index and the amount of protein corroborate those for stomach contents (figure 3). Analysis of the stomach contents performed in caged fish showed that for the same density, the average stomach filling rate and the average number of individual prey was higher in fish exposed for 30 days vs 15 days. The ratio TAG/Chol and the protein were inversely correlated with TME like Ag, Ti, Hg, Mn and Zn (correlation not shown) in D15 flounders. These nutritional indices have been successfully used in numerous studies to assess the nutritional status of fish (Kerambrun et al., 2012; Amara et al., 2007), while a decrease in lipids had been identified as a general metabolic response to stress (Lemly, 1997). The decrease in triacylglycerol compared with controls in the D15 flounders could be the consequence of detoxification and regulation of the metals which were present at higher concentrations at D15 compared with D30. The increase in TAG/Chol ratio and protein levels in flounders after 30 days of caging may be due to a resumption of fish growth after an adaptation and detoxification phase. These fish subjectively seemed to have better wellbeing than the D15 fish, and this was confirmed by the results of the IBR with lower IBR values in D30 fish compared with D15 fish (Sanchez et al., 2013).

The major drawback of the caging of fish was the decline in their fitness related to a lack of access to food. In this study, a gain in fitness indices after 30 days of exposure was observed compared to most of the studies on fish caging which observed a decrease of these indices (Delahaut et al., 2019). It was likely due to the fact that the reefs installed in the cages had permitted the development and growth of their prey. The prey found on the reef attached in each cage were the same as those found in the stomach of the caged fish and was mainly the species

Gammarus zaddachi Sexton. The cages developed and used in this study allow a good survival and better growth of the organisms. They would make it possible to lift the limits on the of fish caging for long durations of exposure.

The increase in the oxidative burst in the D15 flounders could be linked to the presence of TME (Sevcikova et al., 2011) which were more important in these fish. This stimulation index in the D15 flounders is accompanied by a modulation of immune response, especially visible by an increase in phagocytosis efficiency and in the proportion of granulocytes.

However, the induction of EROD and the inhibition of AChE in the D30 flounders demonstrated in this study could be linked to the presence of pollutants which were not assessed during this study, such as pesticides, PAHs, PCBs or other organic compounds (Lushchak, 2011) which are widely found in surface waters and sediments of the Seine River (Minier et al., 2000).

PAHs and PCBs have been demonstrated to have genotoxic effects in flounder's tissues (Dupuy et al., 2014). Similarly, several authors have shown genotoxic effects including damage to the fish DNA by iron (Valko et al., 2005), copper (Alak et al., 2019) and chromium (Ahmad et al., 2006). The rate of DNA damage measured in the fish caged after 15 and 30 days compared with controls suggests that the levels of metal contaminants measured in the caged flounders have fallen below the limit which would cause genotoxicity.

In conclusion, this study demonstrated that juvenile flounder caging is a relevant model for the assessment of the pollution by TME in natural aquatic environment. The accumulation of TME in the flounder muscle is likely dependent of several factors such as their bioavailability and the exposure time. Higher concentrations of metallic elements were found in the muscle of flounders exposed for 15 days compared with those caged for 30 days. For the same exposure time, the density of fish had no effect on the accumulation of the TME in the flounders' muscle. A short time exposure (15 days) seems sufficient to assess the pollution by MTE o. The accumulation of TME in flounders caged for 15 days was linked to a decrease in their condition, lipid reserves and amounts of protein of fish. An increase in leucocyte necrosis associated with leucocyte destabilization, marked by an increase in the granulocytes/macrophages pool, was also observed in the D 15 flounder in comparison with the control and D30 fish. These latter, meanwhile, were characterised by an increased DNA damage, and EROD activity, and an inhibition of acetylcholinesterase activity. These phenomena appear unrelated to the TME contamination in fish, since most were at lower levels compared with the D15 fish. In addition, fish caged for 30 days exhibited better fitness indices, almost certainly due to the fact that their prey had colonized the reefs installed in their cages.

Acknowledgements

This work was funded by the French Ministry of Ecology and Sustainable Development (Programme 190 Ecotoxicology and Programme 181 DRC60) and by the French Biodiversity Agency (SASHIMI project). This work benefitted from the French GDR "Aquatic Ecotoxicology" framework which aims to foster stimulating scientific discussions and collaborations for more integrative approaches.

The authors are grateful to Dr. Mike Howsam for help with English proofreading; We thank also Khalef Rabhi and Michel Laréal for their help during the sampling period.

References

- Ahmad, Iqbal, VL Maria, M Oliveira, M Pacheco, et MA Santos. « Oxidative stress and genotoxic effects in gill and kidney of *Anguilla anguilla* L. exposed to chromium with or without pre-exposure to β -naphthoflavone ». *Mutation Research/Genetic Toxicology and Environmental Mutagenesis* 608, n° 1 (2006): 16-28.
- Alak, Gonca, Veysel Parlak, Mehmet Enes Aslan, Arzu Ucar, Muhammed Atamanalp, et Hasan Turkez. « Borax supplementation alleviates hematotoxicity and DNA damage in rainbow trout (*Oncorhynchus mykiss*) exposed to copper ». *Biological trace element research* 187, n° 2 (2019): 536-42.
- Amara R., Laroche J., Couteau J., Xuereb B., Pichereau V., Diop M., 2020. Biomonitoring actif (engagement de flets et de crevettes) pour le suivi de l'impact de l'incendie du 26 septembre 2019 des installations « Lubrizol / NL Logistique ». Rapport de recherche réalisé pour le GIP Seine-Aval, 34p. <https://www.seine-aval.fr/projet/hqfish/>.
- Amara, Rachid, J Selleslagh, G Billon, et C Minier. « Growth and condition of 0-group European flounder, *Platichthys flesus* as indicator of estuarine habitat quality ». *Hydrobiologia* 627, no 1 (2009): 87-98.
- Amara, Rachid, Tarik Méziane, C Gilliers, G Hermel, et P Laffargue. « Growth and condition indices in juvenile sole *Solea solea* measured to assess the quality of essential fish habitat ». *Marine Ecology Progress Series* 351 (2007): 201-8.
- Andrade, Tiago, António Afonso, Amalia Pérez-Jiménez, Aires Oliva-Teles, Verónica de las Heras, Juan Miguel Mancera, Renata Serradeiro, et Benjamín Costas. « Evaluation of different stocking densities in a Senegalese sole (*Solea senegalensis*) farm: implications for growth, humoral immune parameters and oxidative status ». *Aquaculture* 438 (2015): 6-11.
- Bado-Nilles, Anne, Stéphane Betoulle, Alain Geffard, Jean-Marc Porcher, Béatrice Gagnaire, et Wilfried Sanchez. « Flow cytometry detection of lysosomal presence and lysosomal membrane integrity in the three-spined stickleback (*Gasterosteus aculeatus* L.) immune cells:

- applications in environmental aquatic immunotoxicology. » *Environmental Science and Pollution Research* 20, n° 5 (2013): 2692-2704.
- Bado-Nilles, Anne, Sabrina Jolly, Jean-Marc Porcher, Olivier Palluel, Alain Geffard, Béatrice Gagnaire, Stéphane Betoulle, et Wilfried Sanchez. « Applications in environmental risk assessment of leucocyte apoptosis, necrosis and respiratory burst analysis on the European bullhead, *Cottus sp.* » *Environmental pollution* 184 (2014): 9-17.
- Beliaeff, Benoit, et Thierry Burgeot. « Integrated biomarker response: a useful tool for ecological risk assessment ». *Environmental Toxicology and Chemistry: An International Journal* 21, no 6 (2002): 1316-22.
- Bocquené, Gilles, et François Galgani. *Biological effects of contaminants: cholinesterase inhibition by organophosphate and carbamate compounds*. International Council for the Exploration of the Sea Copenhagen,, Denmark, 1998.
- Borcier, Elodie, Sébastien Artigaud, Jean-Charles Gaillard, Jean Armengaud, Grégory Charrier, Jérôme Couteau, Justine Receveur, Baghdad Ouddane, Mamadou Diop, et Rachid Amara. « Coupling caging and proteomics on the European flounder (*Platichthys flesus*) to assess the estuarine water quality at micro scale ». *Science of The Total Environment* 695 (2019): 133760.
- Burgeot, Thierry, Farida Akcha, Dominique Menard, Craig Robinson, Véronique Loizeau, Christophe Brach-Papa, Concepción Martínez-Gómez, Jérémie Le Goff, Hélène Budzinski, et Karine Le Menach. « Integrated monitoring of chemicals and their effects on four sentinel species, *Limanda limanda*, *Platichthys flesus*, *Nucella lapillus* and *Mytilus sp.*, in Seine Bay: A key step towards applying biological effects to monitoring ». *Marine environmental research* 124 (2017): 92-105.
- Catteau, Audrey, Anne Bado-Nilles, Rémy Beaudouin, Cléo Tebby, Sandrine Joachim, Olivier Palluel, Cyril Turies, Nina Chretien, Katherine Nott, et Sébastien Ronkart. « Water quality of the Meuse watershed: Assessment using a multi-biomarker approach with caged three-spined stickleback (*Gasterosteus aculeatus* L.) ». *Ecotoxicology and environmental safety* 208 (2021): 111407.
- Chilmonczyk, Stefan, et D Monge. « Flow cytometry as a tool for assessment of the fish cellular immune response to pathogens ». *Fish & Shellfish Immunology* 9, no 4 (1999): 319-33.
- Clemmesen, Catriona M. « Laboratory studies on RNA/DNA ratios of starved and fed herring (*Clupea harengus*) and turbot (*Scophthalmus maximus*) larvae ». *ICES Journal of Marine Science* 43, no 2 (1987): 122-28.
- Delahaut, Vyshal, Oceanne Daelemans, Amit Kumar Sinha, Gudrun De Boeck, et Lieven Bervoets. « A multibiomarker approach for evaluating environmental contamination: Common carp (*Cyprinus carpio*) transplanted along a gradient of metal pollution ». *Science of The Total Environment* 669 (2019): 481-92.
- Dhivert, Elie, Cécile Grosbois, Alexandra Courtin-Nomade, Xavier Bourrain, et Marc Desmet. « Dynamics of metallic contaminants at a basin scale—spatial and temporal reconstruction from four sediment cores (Loire fluvial system, France) ». *Science of the total environment* 541 (2016): 1504-15.
- Di Pane, Julien, Léa Joly, Philippe Koubbi, Carolina Giraldo, Sébastien Monchy, Eric Tavernier, Paul Marchal, et Christophe Loots. « Ontogenetic shift in the energy allocation strategy and

- physiological condition of larval plaice (*Pleuronectes platessa*) ». *Plos one* 14, n° 9 (2019): e0222261.
- Dupuy, Célié, Claire Galland, Alain Devaux, Sylvie Bony, Véronique Loizeau, Morgane Danion, Vianney Pichereau, Michel Fournier, et Jean Laroche. « Responses of the European flounder (*Platichthys flesus*) to a mixture of PAHs and PCBs in experimental conditions ». *Environmental Science and Pollution Research* 21, n° 24 (2014): 13789-803.
- Eggens, Martin L, et Francois Galgani. « Ethoxyresorufin-O-deethylase (EROD) activity in flatfish: fast determination with a fluorescence plate-reader ». *Marine Environmental Research* 33, n° 3 (1992): 213-21.
- Esser, Verena, Michael Buchty-Lemke, Philipp Schulte, Lea Sophia Podzun, et Frank Lehmkuhl. « Signatures of recent pollution profiles in comparable central European rivers—Examples from the international River Basin District Meuse ». *Catena* 193 (2020): 104646.
- Fent, Karl. « Ecotoxicological effects at contaminated sites ». *Toxicology* 205, n° 3 (2004): 223-40.
- Fernandes, Conceição, A Fontainhas-Fernandes, F Peixoto, et Maria Antónia Salgado. « Bioaccumulation of heavy metals in *Liza saliens* from the Esmoriz–Paramos coastal lagoon, Portugal ». *Ecotoxicology and environmental safety* 66, n° 3 (2007): 426-31.
- Fisson, Cédric. « Qualité des eaux de l'estuaire de la Seine ». *Fascicule Seine-Aval* 3 (2014).
- Folch J, Lees M, Stanley GHS (1957) A simple method for the isolation and purification of total lipides from animal tissues. *The Journal of Biological Chemistry* 226: 497–509.
- Gagnaire, Beatrice, H Thomas-Guyon, et Tristan Renault. « In vitro effects of cadmium and mercury on Pacific oyster, *Crassostrea gigas* (Thunberg), haemocytes ». *Fish & Shellfish Immunology* 16, n° 4 (2004): 501-12.
- Hamzeh, Mariam, Baghdad Ouddane, Christelle Clérandeau, et Jérôme Cachot. « Spatial distribution and toxic potency of trace metals in surface sediments of the Seine Estuary (France) ». *CLEAN–Soil, Air, Water* 44, n° 5 (2016): 544-52.
- Hamzeh, Mariam, Baghdad Ouddane, Mirna El-Daye, et Jalal Halwani. « Profile of trace metals accumulation in core sediment from Seine river estuary (docks basin) ». *Environmental technology* 34, n° 9 (2013): 1107-16.
- Huerta-Diaz, Miguel A, et John W Morse. « A quantitative method for determination of trace metal concentrations in sedimentary pyrite ». *Marine Chemistry* 29 (1990): 119-44.
- Jørgensen, Even H, Bjørn E Bye, et Malcolm Jobling. « Influence of nutritional status on biomarker responses to PCB in the Arctic charr (*Salvelinus alpinus*) ». *Aquatic Toxicology* 44, n° 4 (1999): 233-44.
- Kerambrun, E, F Henry, L Courcot, François Gevaert, et Rachid Amara. « Biological responses of caged juvenile sea bass (*Dicentrarchus labrax*) and turbot (*Scophthalmus maximus*) in a polluted harbour ». *Ecological indicators* 19 (2012): 161-71.
- Kerambrun, E, F Henry, P Perrichon, L Courcot, T Meziane, Nicolas Spilmont, et Rachid Amara. « Growth and condition indices of juvenile turbot, *Scophthalmus maximus*, exposed to contaminated sediments: effects of metallic and organic compounds ». *Aquatic toxicology* 108 (2012): 130-40.
- Larrose, Aurélie, Alexandra Coynel, Jörg Schäfer, Gérard Blanc, Laurent Massé, et Eric Maneux. « Assessing the current state of the Gironde Estuary by mapping priority contaminant

- distribution and risk potential in surface sediment ». *Applied Geochemistry* 25, no 12 (2010): 1912-23.
- Le Guernic, Antoine, Wilfried Sanchez, Olivier Palluel, Anne Bado-Nilles, Cyril Turies, Edith Chadili, Isabelle Cavalié, Christelle Adam-Guillermin, Jean-Marc Porcher, et Alain Geffard. « In situ experiments to assess effects of constraints linked to caging on ecotoxicity biomarkers of the three-spined stickleback (*Gasterosteus aculeatus* L.) ». *Fish physiology and biochemistry* 42, no 2 (2016): 643-57.
- Lemly, A Dennis. « Role of season in aquatic hazard assessment ». *Environmental monitoring and assessment* 45, n° 1 (1997): 88-98.
- Lushchak, Volodymyr I. « Environmentally induced oxidative stress in aquatic animals ». *Aquatic toxicology* 101, n° 1 (2011): 13-30.
- Minier, C, F Levy, D Rabel, G Bocquene, D Godefroy, T Burgeot, et F Leboulenger. « Flounder health status in the Seine Bay. A multibiomarker study ». *Marine environmental research* 50, n° 1-5 (2000): 373-77.
- Oikari, Aimo. « Caging techniques for field exposures of fish to chemical contaminants ». *Aquatic Toxicology* 78, n° 4 (2006): 370-81.
- Ouddane, Baghdad, Mohamed Skiker, Jean Claude Fischer, et Michel Wartel. « Distribution of iron and manganese in the Seine river estuary: approach with experimental laboratory mixing ». *Journal of Environmental Monitoring* 1, n° 5 (1999): 489-96.
- Ouddane, Baghdad. « Comportement des éléments majeurs et mineurs dans un milieu soumis à des gradients physico-chimiques marqués: cas de l'estuaire de la Seine », 1990.
- Palace, Vince P, Cecilia Doebel, Chris L Baron, Robert E Evans, Kerry G Wautier, Jack F Klaverkamp, Jeffrey Werner, et Suzanne Kollar. « Caging small-bodied fish as an alternative method for environmental effects monitoring (EEM) ». *Water Quality Research Journal* 40, n° 3 (2005): 328-33.
- Romero, Estela, Romain Le Gendre, Josette Garnier, Gilles Billen, Cédric Fisson, Marie Silvestre, et Philippe Riou. « Long-term water quality in the lower Seine: Lessons learned over 4 decades of monitoring ». *Environmental Science & Policy* 58 (2016): 141-54.
- Sanchez, Wilfried, Thierry Burgeot, et Jean-Marc Porcher. « A novel "Integrated Biomarker Response" calculation based on reference deviation concept ». *Environmental Science and Pollution Research* 20, n° 5 (2013): 2721-25.
- Sanchez, Wilfried, Selim Ait-Aissa, Olivier Palluel, Jean-Maxence Ditche, et Jean-Marc Porcher. « Preliminary investigation of multi-biomarker responses in three-spined stickleback (*Gasterosteus aculeatus* L.) sampled in contaminated streams ». *Ecotoxicology* 16, no 2 (2007): 279-87.
- Sevcikova, M, H Modra, A Slaninova, et Z Svobodova. « Metals as a cause of oxidative stress in fish: a review ». *Vet Med* 56, n° 11 (2011): 537-46.
- Schøyen, Merete, Ian J Allan, Anders Ruus, Jarle Håvardstun, Dag Ø Hjermann, et Jonny Beyer. « Comparison of caged and native blue mussels (*Mytilus edulis* spp.) for environmental monitoring of PAH, PCB and trace metals ». *Marine environmental research* 130 (2017): 221-32.

- Schlenk, D, YS Zhang, et J Nix. « Expression of hepatic metallothionein messenger RNA in feral and caged fish species correlates with muscle mercury levels ». *Ecotoxicology and environmental safety* 31, no 3 (1995): 282-86.
- Singh, Narendra P, Michael T McCoy, Raymond R Tice, et Edward L Schneider. « A simple technique for quantitation of low levels of DNA damage in individual cells ». *Experimental cell research* 175, no 1 (1988): 184-91.
- Urbinati, Elisabeth Criscuolo, Janessa Sampaio de Abreu, Antônio Cleber da Silva Camargo, et Miguel Angel Landinez Parra. « Loading and transport stress of juvenile matrinxã (*Brycon cephalus*, Characidae) at various densities ». *Aquaculture* 229, no 1-4 (2004): 389-400.
- Valko, MMHCM, H Morris, et MTD Cronin. « Metals, toxicity and oxidative stress ». *Current medicinal chemistry* 12, no 10 (2005): 1161-1208.
- Vandghanooni, Somayeh, et Morteza Eskandani. « Comet assay: a method to evaluate genotoxicity of nano-drug delivery system ». *BioImpacts: BI* 1, no 2 (2011): 87.
- Vazzana, M, M Cammarata, EL Cooper, et N Parrinello. « Confinement stress in sea bass (*Dicentrarchus labrax*) depresses peritoneal leukocyte cytotoxicity ». *Aquaculture* 210, no 1-4 (2002): 231-43.

Table 1: Concentration of trace metal elements (bioavailable and total, mg/kg dw) and the percentage of bioavailability calculated in the sediment from Rouen

Elements	Total Fraction	Reactive fraction	% of Bioavailability
Ag	7.98 ± 0.62	2.75 ± 0.93	34.4
Ba	107 ± 1	82.9 ± 6.2	77.1
Cd	2.75 ± 0.24	2.05 ± 0.14	74.4
Co	7.13 ± 0.48	4.62 ± 0.36	64.8
Cr	43.8 ± 6.6	21.1 ± 0.8	48.1
Cu	39.1 ± 3.3	32.7 ± 0.2	83.5
Fe	22 529 ± 2,212	13 731 ± 508	60.9
Hg	2.77 ± 3.6	1.63 ± 0.80	61.2
Mn	373 ± 36	336 ± 48	90.1
Mo	1.81 ± 0.31	0.5 ± 0.71	27.8
Ni	16.1 ± 1.5	11.9 ± 0.8	73.8
Pb	48.0 ± 7.6	39.6 ± 4.0	81.5
Sr	230 ± 12	221 ± 10	95.9
Ti	472 ± 95	191 ± 2	40.5
V	33.0 ± 1.6	14.6 ± 0.4	42.8
Zn	224 ± 26	138 ± 2	61.7

Table 2: Concentrations of trace metal elements expressed in mg/kg of dry weight measured in muscles of flounders caged during 0, 15 and 30 days. a, b, c, d, e and f indices indicate significant difference (Kruskal Wallis, $p < 0.05$) with controls, cages C1, C2, C3, C4 and C6 respectively.

Time exposure (day)	Cages	Ag	Co	Ni	Pb	Ti	V	Al	Ba	Hg	Cr	Cu	Mn	Zn	Sr	Fe
0	Controls	0.06 ± 0.04	0.02 ± 0.02	0.07 ± 0.04	0.09 ± 0.04	0.06 ± 0.03	0.04 ± 0.03	1.83 ± 0.49	0.48 ± 0.42	0.28 ± 0.04	0.91 ± 0.3	1.29 ± 0.23	1.05 ± 0.08	30.9 ± 10.88	2.98 ± 1.50	10.67 ± 4.92
15	C1 (Low density)	0.14 ± 0.02 ^{a.e.f}	0.01 ± 0.001	0.11 ± 0.06	0.07 ± 0.00	0.12 ± 0.05 ^{a.e.f}	0.03 ± 0.00	1.24 ± 0.18	0.42 ± 0.12	0.72 ± 0.09 ^{a.e.f}	0.66 ± 0.07	2.14 ± 0.44 ^a	1.73 ± 0.25 ^a	56.7 ± 13.66 ^{a.e.f}	13.46 ± 4.28 ^a	7.94 ± 1.58
	C2 (medium density)	0.19 ± 0.10 ^{a.e.f}	0.02 ± 0.005	0.08 ± 0.09	0.06 ± 0.1	0.13 ± 0.11 ^{a.e.f}	0.03 ± 0.03	1.03 ± 0.44	0.49 ± 0.25	0.73 ± 0.07 ^{a.e.f}	0.74 ± 0.21	1.96 ± 0.23 ^a	1.74 ± 0.46 ^a	44.3 ± 11.14 ^{a.e.f}	15.15 ± 8.83 ^a	8.62 ± 2.88
	C3 (High density)	0.17 ± 0.10 ^{a.e.f}	0.02 ± 0.005	0.11 ± 0.09	0.12 ± 0.1	0.13 ± 0.11 ^{a.e.f}	0.04 ± 0.03	0.99 ± 0.44	0.83 ± 0.91	0.63 ± 0.14 ^{a.e.f}	0.73 ± 0.15	1.67 ± 0.38 ^a	2.67 ± 1.92 ^a	43.7 ± 14.08 ^{a.e.f}	13.79 ± 5.25 ^a	8.03 ± 2.99
30	C4 (Low density)	0.07 ± 0.02	-	0.13 ± 0.07 ^a	0.04 ± 0.01	0.06 ± 0.01	0.01 ± 0.00	1.55 ± 0.93	0.42 ± 0.05	0.33 ± 0.01	0.82 ± 0.20	2.04 ± 0.36 ^a	1.68 ± 0.58 ^a	31.0 ± 0.74	12.86 ± 1.52 ^a	9.01 ± 1.93
	C6 (High density)	0.07 ± 0.03	-	0.14 ± 0.02 ^a	0.05 ± 0.01	0.06 ± 0.03	0.01 ± 0.01	1.03 ± 0.19	0.51 ± 0.32	0.33 ± 0.03	0.80 ± 0.17	1.92 ± 0.25 ^a	2.17 ± 0.93 ^a	35.8 ± 8.66	16.91 ± 9.01 ^a	8.20 ± 1.81

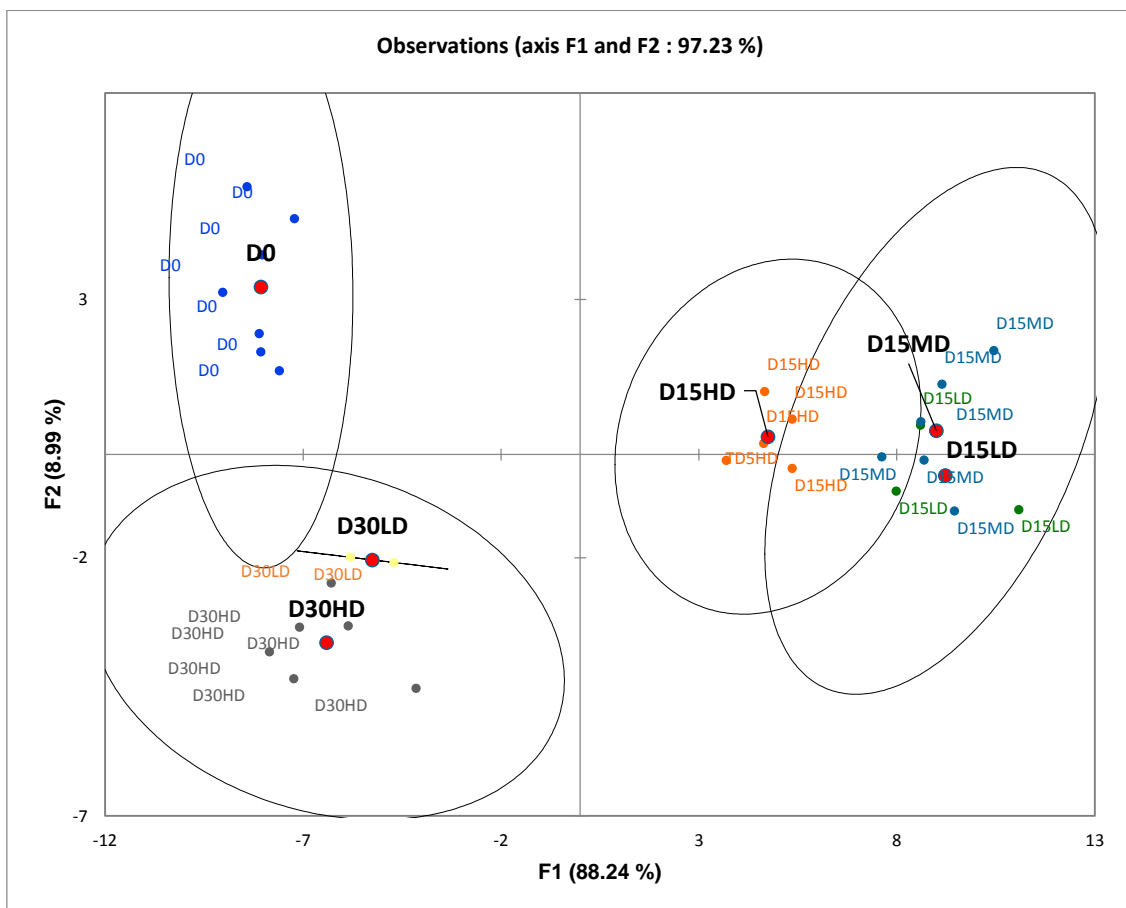
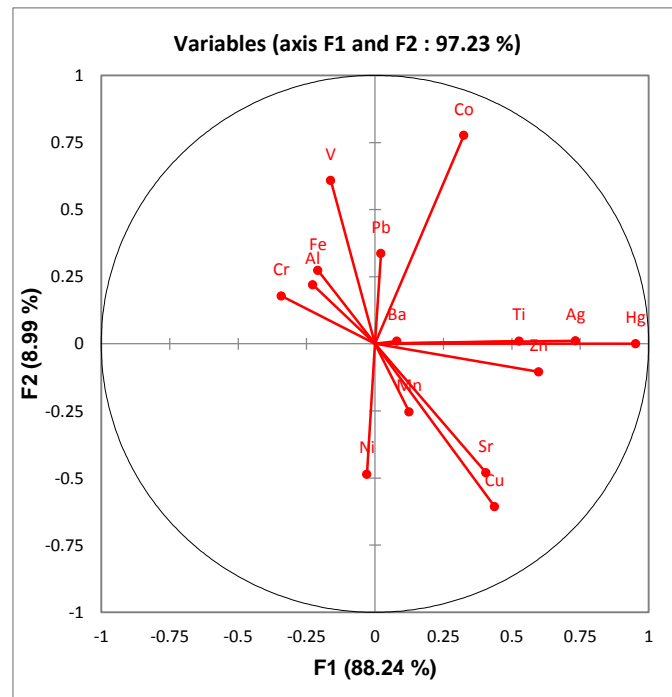


Figure 2: Factorial discriminant analysis showing the distribution of metallic trace elements as a function of caged fish density and exposure duration. D0 Controls, D15LD, D15MD, D15HD fish exposed during 15 days in cage with Low, Medium and high densities of flounders, respectively. D30LD, D30HD fish exposed during 30 days in cage with Low and High densities of flounders, respectively.

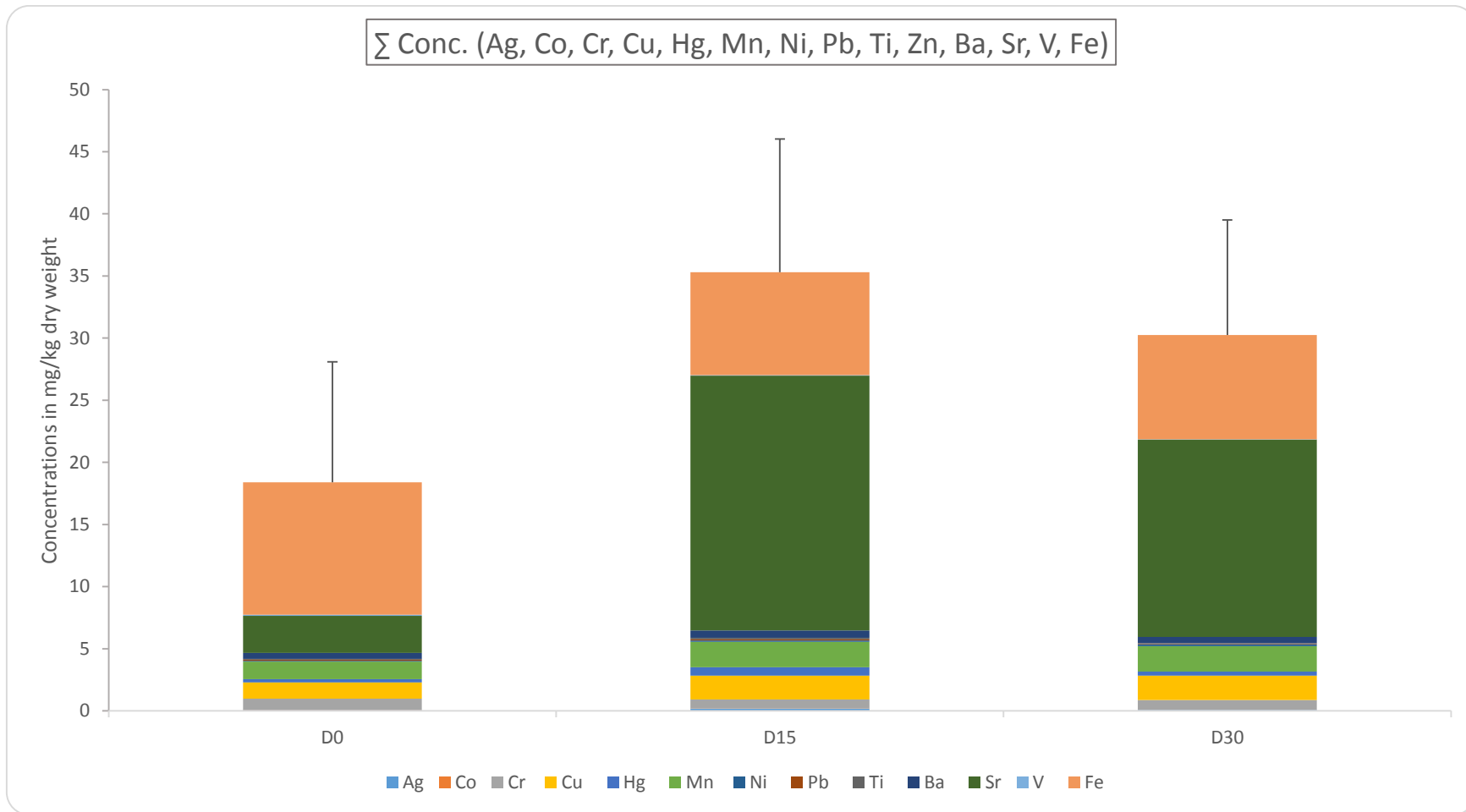


Figure 1: Concentration of trace metallic elements (TEM, mg/kg of dry weight) in the muscles of flounders before caging (Day 0, D0) and after 15 (D15) and 30 days (D30) of active biomonitoring in the Seine estuary at *Rouen*.

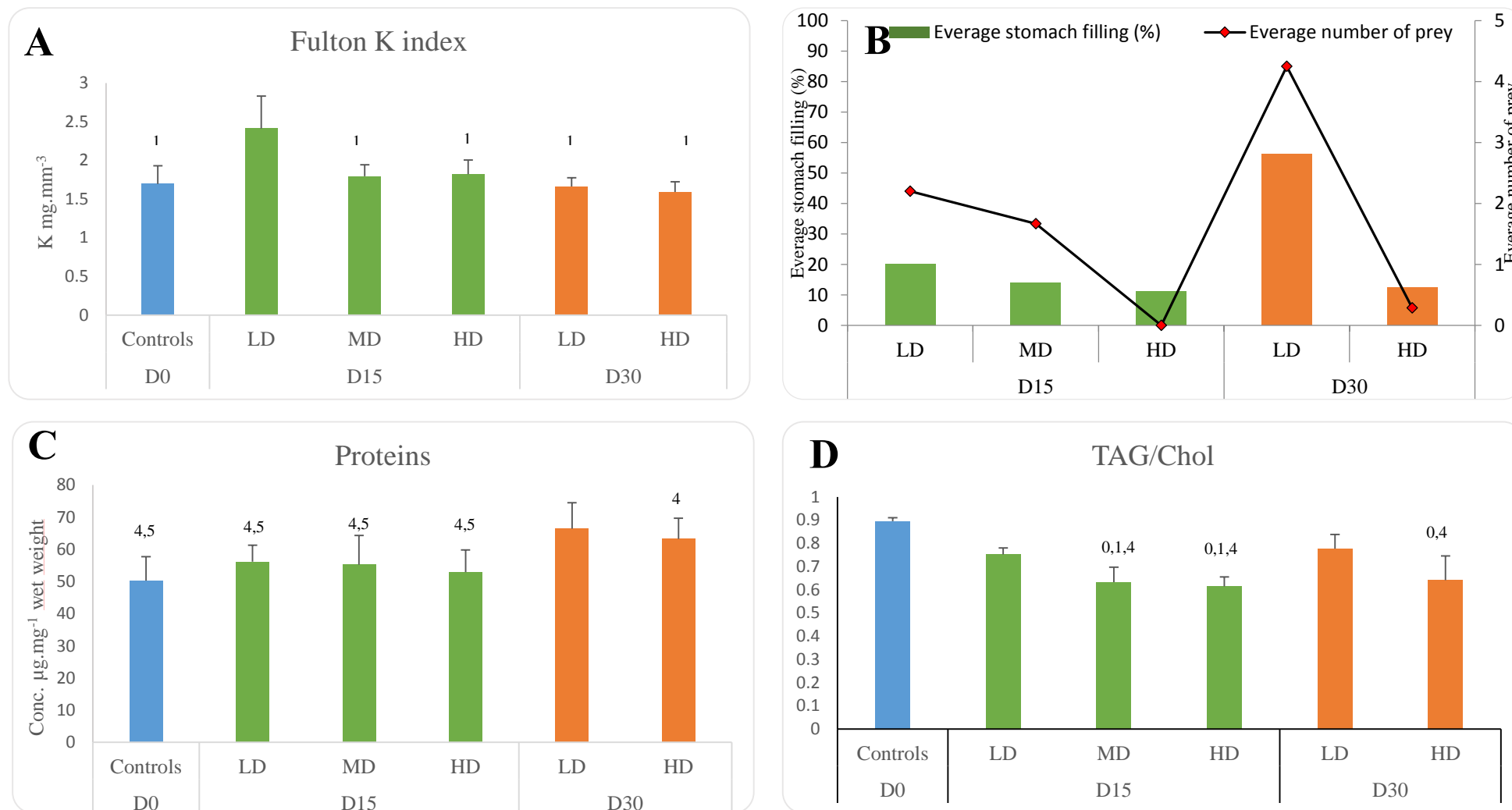


Figure 3: Fulton K index (A), stomach feeling and number of preys (B), protein concentration (C) and TAG/Chol ratio (D) measured in caged flounders depending on their density and exposure duration. The indices 0,1,2,3,4,5 and 6 represent significant differences ($p < 0.05$) compared respectively with Controls, the cages with Low Density (LD), Medium Density (MD) and High Density (HD) exposed during 15 days (D15) and cages with Low Density (LD) and High Density (HD) exposed during 30 days (D30).

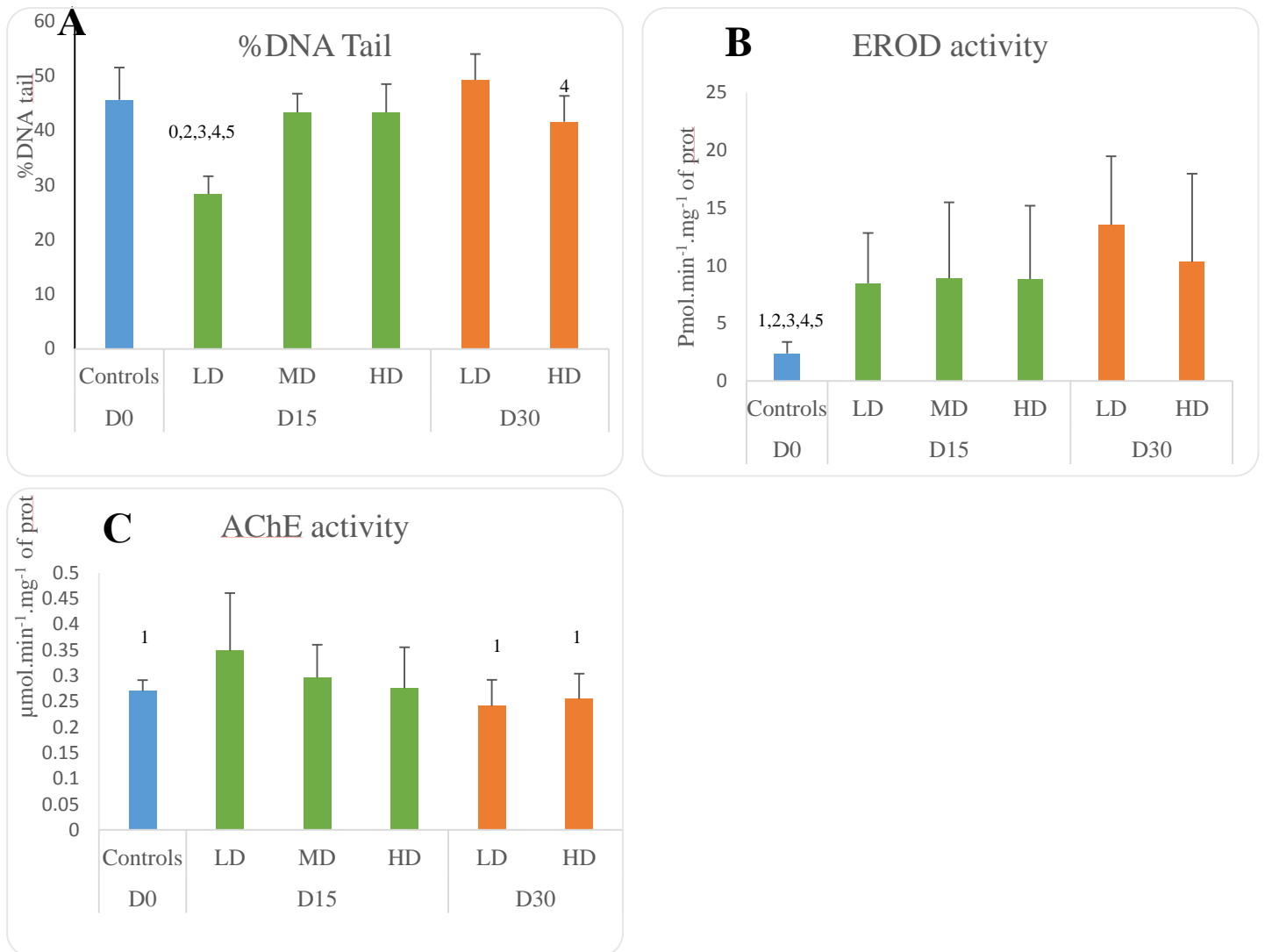


Figure 4: Percentage of DNA tail (A), Etheroxy-O-deethylase activity (B) and Acetylcholinesterase activity (C) measured in caged flounders depending on their density and exposure duration. The indices 0,1,2,3,4 and 6 represent significant differences ($p < 0.05$) compared respectively with Controls, the cages with Low Density (LD), Medium Density (MD) and High Density (HD) exposed during 15 days (D15) and cages with Low Density (LD) and High Density (HD) exposed during 30 days (D30).

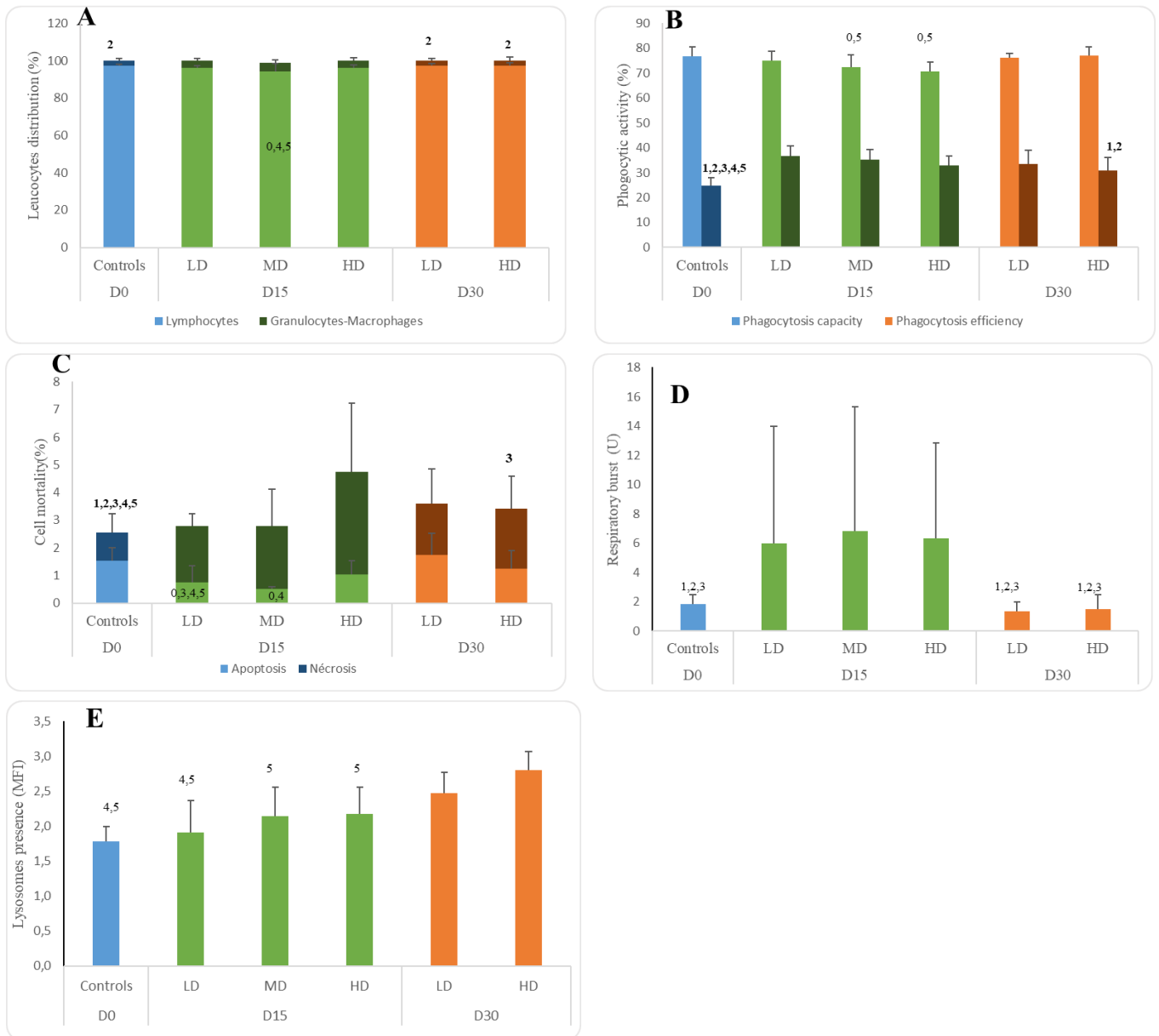


Figure 5: Leucocyte distribution (A), phagocytic activity (B), cell mortality (C), respiratory burst (D) and the presence of lysosomes (E) measured in the spleen of flounders depending on their caging density and exposure duration. The indices 0,1,2,3,4 and 6 represent significant differences ($p < 0.05$) compared respectively with Controls, the cages with Low Density (LD), Medium Density (MD) and High Density (HD) exposed during 15 days (D15) and cages with Low Density (LD) and High Density (HD) exposed during 30 days (D30).

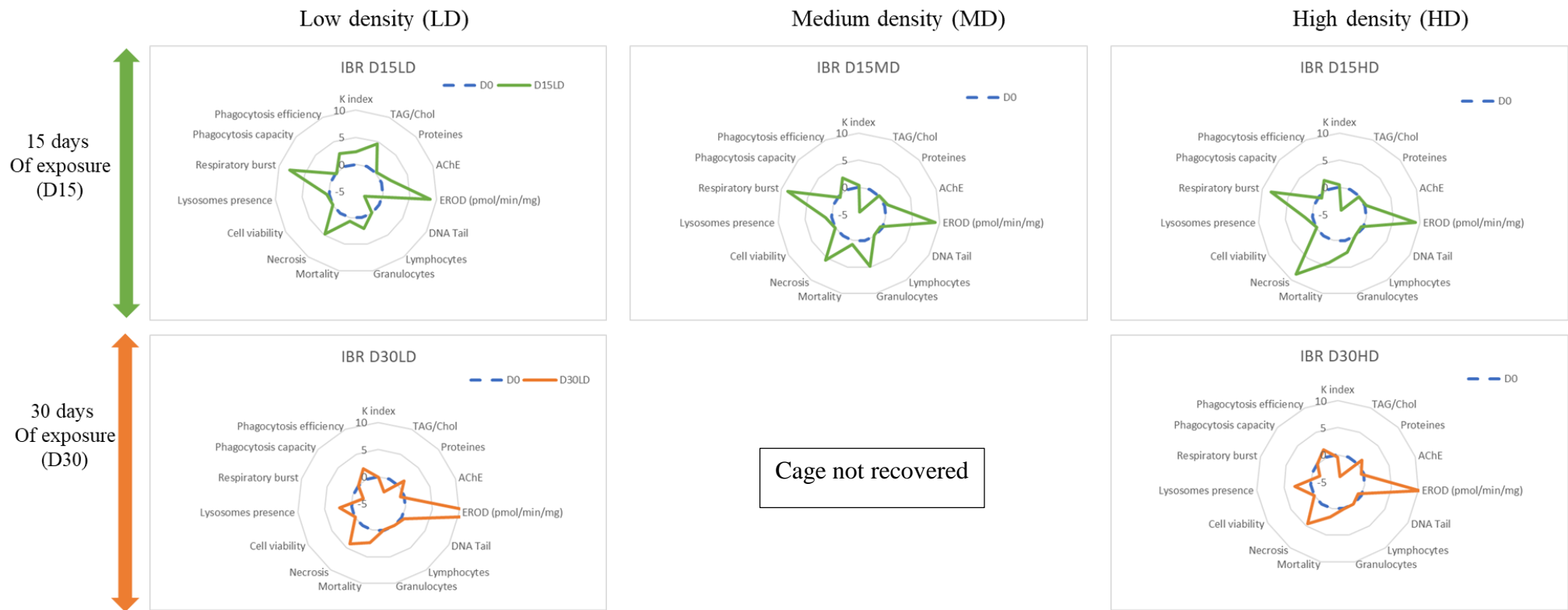


Figure 6 : Integrative Biological Response (IBR) calculated in the caged fish with Low Density (LD), Medium Density (MD) and high Density HD) exposed during 15 days (15D) and 30 days (30D) in comparison with the controls (D0).

Competing financial interest declaration

The authors declare no competing financial interests.

Author contributions

Mamadou DIOP: collected and analysed the sample, conception of the article, collected and analysed the data, developed the text and updating the article as per the suggestions. Jérôme Couteau: sample analysis, revised the text and make substantial contributions towards genesis and design of the article; Anne Bado-Nilles: sample analysis, conception of the article, revised the text and make substantial contributions towards genesis and design of the article; Eric Tavernier: revised the text and make substantial contributions towards genesis and design of the article; Baghdad Ouddane: revised the text and make substantial contributions towards genesis and design of the article; Jeremy Denis: revised the text and make substantial contributions towards genesis and design of the article contribution towards genesis and design of the article; Gwendoline Duong: revised the text and make substantial contributions towards the article; François Gevaert: revised the text and make substantial contributions towards genesis and design of the article. Sebastien Monchy: revised the text and make substantial contributions towards genesis and design of the article. Jean Laroche: revised the text and make substantial contributions towards genesis and design of the article. Rachid Amara: Conceptualization and methodological development of the study, revised the text and make substantial contributions towards genesis and design of the article.